

32-202

NOT FOR LOAN
NE S'EMPRUNTE PAS

CANADA

DEPARTMENT OF TRADE AND COMMERCE

DOMINION BUREAU OF STATISTICS

CENSUS OF INDUSTRY

STATISTICS STATISTIQUES
CANADA CANADA

REPORT

on the

AUG 16 2010

LIBRARY
BIBLIOTHEQUE

BISCUIT, CONFECTIONERY, COCOA

and

CHOCOLATE INDUSTRIES

in

CANADA

1930

Published by Authority of the Hon. H. H. Stevens, M.P.,

Minister of Trade and Commerce

OTTAWA

1932

32-202

NOT FOR SALE
BANKERS & MERCHANTS

STATISTICAL
BUREAU

LIBRARY
BIBLIOTHEQUE

DEPARTMENT OF TRADE AND COMMERCE
DOMINION BUREAU OF STATISTICS
CENSUS OF INDUSTRY
OTTAWA-CANADA

Dominion Statistician: R. H. Coats, B.A., F.S.S. (Hon.), F.R.S.C.
Acting Chief, Census of Industry: A. Cohen, B. Com.

THE BISCUIT, CONFECTIONERY, COCOA AND CHOCOLATE INDUSTRIES IN CANADA, 1929. 330

Ottawa, February, 1932. A report on the Biscuit, Confectionery, Cocoa and Chocolate Industry in Canada is herewith presented for the year 1930. The number of individual plants reporting to the Bureau in 1930 totalled 280, located by provinces as follows: Ontario 120, Quebec 53, British Columbia 48, Manitoba 19, Alberta 16, Nova Scotia 11, New Brunswick 7, Prince Edward Island 4 and Saskatchewan 2. Of the plants reporting in 1930, the number making biscuits only totalled 13, biscuits and confectionery only 20, ice cream only 24 and confectionery only (including cocoa and chocolate) 223. Statistics of the chewing gum industry are included in the confectionery section of this report.

As shown in table 1, the output of biscuits, confectionery, cocoa and chocolate was valued at \$58,059,602 in 1930. The 280 establishments comprising the industry reported a capital investment of \$54,406,093, they furnished employment to 12,291 persons who were paid \$11,104,668 in salaries and wages and paid out \$25,044,901 for materials. The province of Ontario is the largest producer of biscuits and confectionery. In 1930 the 120 plants located in Ontario employed 55 per cent of the capital, produced 54 per cent of the entire output and gave employment to 48 per cent of the persons engaged in the industry.

The general depression prevailing in 1930 also affected this industry. Compared with the previous year there was a decrease of 1 in the number of establishments with a decrease of \$914,209 in the capital invested. The value of production also decreased by \$5,011,107 or 8 per cent while the number of persons employed was only 782 or 6 per cent lower than in the previous year.

It should be remembered that the statistics published in the present report include only the statistics of such manufacturing establishments as make biscuits, confectionery, cocoa and chocolate as their principal products. Statistics relating to specific products are therefore not to be regarded as comprehensive, since such products as biscuits and confectionery are also found as secondary products of the following industries.

1. Bread and other bakery products.
2. Coffee and spices.
3. Medicinal and pharmaceutical preparations.

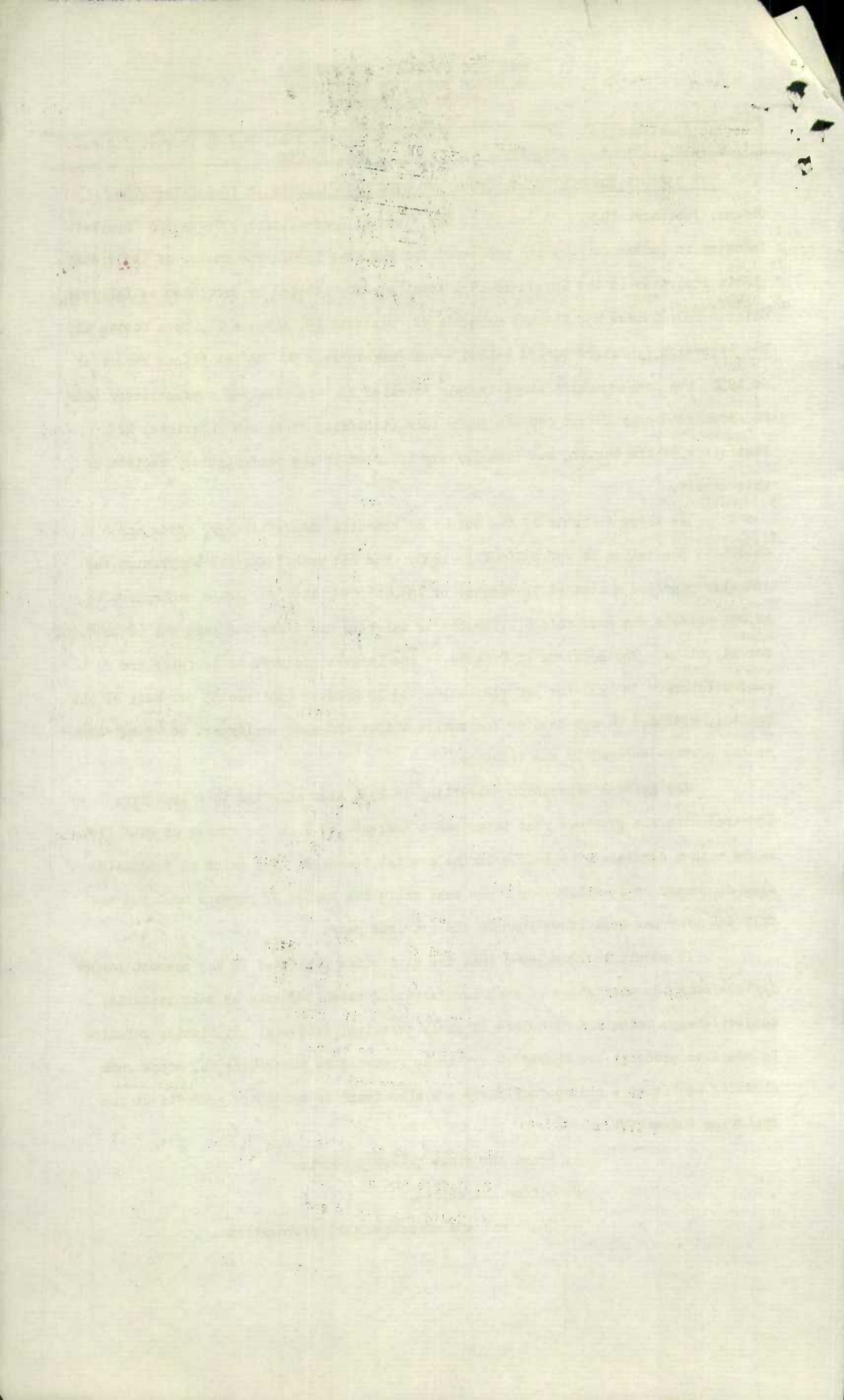


Table 1.- Principal Statistics of the Biscuit, Confectionery, Cocoa and Chocolate Industry, 1920-1930.

Year	Establishments No.	Capital employed \$	Employees	Salaries and wages \$	Cost of materials \$	Value of products \$
1920	400	31,217,581	12,722	10,538,291	30,939,803	54,658,833
1921	372	30,655,589	11,286	9,736,789	22,600,821	46,758,014
1922	368	33,680,280	12,001	10,288,672	19,917,649	42,416,311
1923	361	36,827,117	12,724	11,125,161	23,959,877	48,394,175
/1 1924	321	38,557,117	11,886	12,126,701	23,383,625	45,123,629
/1 1925	320	40,770,096	11,958	10,512,770	23,227,967	46,745,355
/1 1926	315	42,422,378	11,976	10,755,550	23,644,255	49,178,836
/1 1927	294	46,448,311	12,485	11,399,594	25,149,428	53,128,888
/2 1928	283	52,353,032	13,274	12,534,629	28,480,230	60,404,223
	Establishments No.	Capital employed \$	Employees	Salaries and wages \$	Cost of materials \$	Value of products \$
1929						
CANADA	31	55,320,902	13,073	12,765,876	27,717,889	63,070,709
P. E. Island	4	11,070	8	4,663	15,251	32,471
Nova Scotia	11	4,684,465	1,833	1,111,542	1,534,703	3,588,769
New Brunswick	8	2,282,364	684	556,265	1,343,458	2,746,065
Quebec	54	12,115,138	3,609	2,967,460	7,766,807	16,028,382
Ontario	124	31,253,372	6,294	6,798,724	14,303,333	34,357,397
Manitoba	19	2,321,172	483	488,730	1,102,905	2,450,345
Saskatchewan) and Alberta)	15	1,195,237	271	321,971	519,772	1,366,482
British Columbia	46	1,458,086	491	516,521	1,131,660	2,500,798
1930						
CANADA	280	54,406,093	12,291	11,104,668	25,044,901	58,059,602
P. E. Island	4	75,579	39	16,336	30,799	69,724
Nova Scotia	11	4,978,322	1,098	1,111,193	1,508,800	3,808,639
New Brunswick	7	2,230,403	612	459,048	1,107,696	2,393,021
Quebec	53	11,552,144	3,358	2,503,465	6,651,334	14,299,835
Ontario	120	29,938,561	5,903	5,687,659	12,889,075	31,395,318
Manitoba	19	1,891,707	444	430,804	849,559	1,598,645
Saskatchewan) and Alberta)	18	1,970,870	328	412,019	986,755	2,145,274
British Columbia	48	1,768,507	509	484,144	1,020,883	2,349,146

Note: - /1 In 1924 the statistics relating to the Chewing Gum industry were incorporated with the Biscuits & Confectionery industry.

/2 In 1928 the statistics relating to the Cocoa and Chocolate Industry were included with the Biscuits and Confectionery Industry.

THE BISCUIT, CONFECTIONERY, COCOA AND CHOCOLATE INDUSTRY IN CANADA, 1929
Size of Establishments.

In view of the tendency towards concentration in industrial enterprises, a series of tables has been prepared presenting in a three fold way the size of establishments in the Biscuit and Confectionery industry measured by (a) capital investment, (b) gross value of production and (c) employment. The tables when compared for a number of years indicate the movement of capital, production and employment within the industry.

In 1930 the number of establishments reporting was 280 with a total capital investment of \$54,406,093, a total gross value of production of \$58,059,602 and a total employment of 12,291. Of the total number of establishments 14 had a capital investment of \$33,452,287 or 62.3 per cent of the total investment with an average investment of \$2,389,449 per establishment. In gross value of production, 15 establishments had a total production of \$32,885,643 or 56.7 per cent of the total for the industry and an average production of \$2,192,376 per establishment. In employment, 16 establishments had a total payroll of 6,677 or 54.3 per cent of the number employed and an average employment of 417 per establishment.

Table 2 (a) Size of Establishment according to Capital Invested, 1929 and 1930.

Groups of value of Capital	1929			1930		
	Establishments No.	Capital invested \$	Average capital \$	Establishments No.	Capital invested \$	Average capital \$
Under \$50,000	200	2,227,817	11,139	200	2,189,231	10,946
\$50,000 to under \$100,000	19	1,379,090	72,582	18	1,255,395	69,744
\$100,000 to under \$200,000	14	1,994,375	142,455	16	2,467,659	154,228
\$200,000 to under \$500,000	24	7,503,910	312,663	21	7,155,682	340,747
\$500,000 to under \$1,000,000	10	7,445,488	744,548	11	7,885,839	716,894
\$1,000,000 and over	14	34,770,222	2,483,587	14	33,452,287	2,389,449
Total	281	55,320,902	196,872	280	54,406,093	194,307

Page 1 of 10

1. Introduction

2. Objectives

3. Methodology

4. Results

5. Discussion

6. Conclusion

7. References

8. Appendix

9. Glossary

10. Index

11. Bibliography

12. Acknowledgements

13. Author's Note

14. Contact Information

15. Declaration of Interest

16. Funding Source

17. Data Availability

18. Ethics Approval

19. Conflicts of Interest

20. Author Contributions

21. Correspondence

22. Peer Review

23. Publication Details

24. Copyright

25. Terms and Conditions

26. Abstract

27. Keywords

28. Summary

29. Introduction

30. Objectives

31. Methodology

32. Results

33. Discussion

34. Conclusion

35. References

36. Appendix

37. Glossary

38. Index

39. Bibliography

40. Acknowledgements

41. Author's Note

42. Contact Information

43. Declaration of Interest

44. Funding Source

45. Data Availability

46. Ethics Approval

47. Conflicts of Interest

48. Author Contributions

49. Correspondence

50. Peer Review

51. Publication Details

52. Copyright

53. Terms and Conditions

54. Abstract

55. Keywords

56. Summary

57. Introduction

58. Objectives

59. Methodology

60. Results

61. Discussion

62. Conclusion

63. References

64. Appendix

65. Glossary

66. Index

67. Bibliography

68. Acknowledgements

69. Author's Note

70. Contact Information

71. Declaration of Interest

72. Funding Source

73. Data Availability

74. Ethics Approval

75. Conflicts of Interest

76. Author Contributions

77. Correspondence

78. Peer Review

79. Publication Details

80. Copyright

81. Terms and Conditions

Table 2 (b) Size of Establishment According to Value of Production, 1929 and 1930.

Groups of value of production	1929			1930		
	Estab-lish-ments	Gross Value of Production	Average Value of Production	Estab-lish-ments	Gross Value of Production	Average Value of Production
	No.	\$	\$	No.	\$	\$
Under 50,000	178	2,129,200	11,962	179	2,138,489	11,947
\$50,000 to under \$100,000	31	2,228,003	72,871	31	2,122,433	70,594
\$100,000 to under \$200,000	18	2,562,181	142,343	16	2,260,804	141,300
\$200,000 to under \$500,000	22	7,115,210	323,414	23	7,407,340	322,058
\$500,000 to under \$1,000,000	15	10,284,639	685,643	16	11,178,882	698,680
\$1,000,000 and over	17	38,173,563	2,245,504	15	32,885,648	2,192,376
Total	231	62,492,801	222,394	230	58,059,602	207,356

Table 2 (c) Size of Establishment According to Number of Persons Employed, 1929 & 1930.

Groups of employees	1929			1930		
	Estab-lish-ments	Total Employees	Average Employees	Estab-lish-ments	Total Employees	Average Employees
	No.	No.	No.	No.	No.	No.
Under 20 employees	200	1,006	5.03	197	955	4.84
20 to under 50 employees	23	863	30.82	32	961	30.03
50 to under 100 employees	20	1,502	75.10	17	1,266	74.47
100 to under 200 employees	13	2,536	140.88	18	2,432	135.11
200 to under 500 employees	10	3,473	347.30	11	3,290	299.09
500 employees and over	5	3,603	720.60	5	3,387	677.40
Total	281	13,073	46.52	280	12,291	43.90

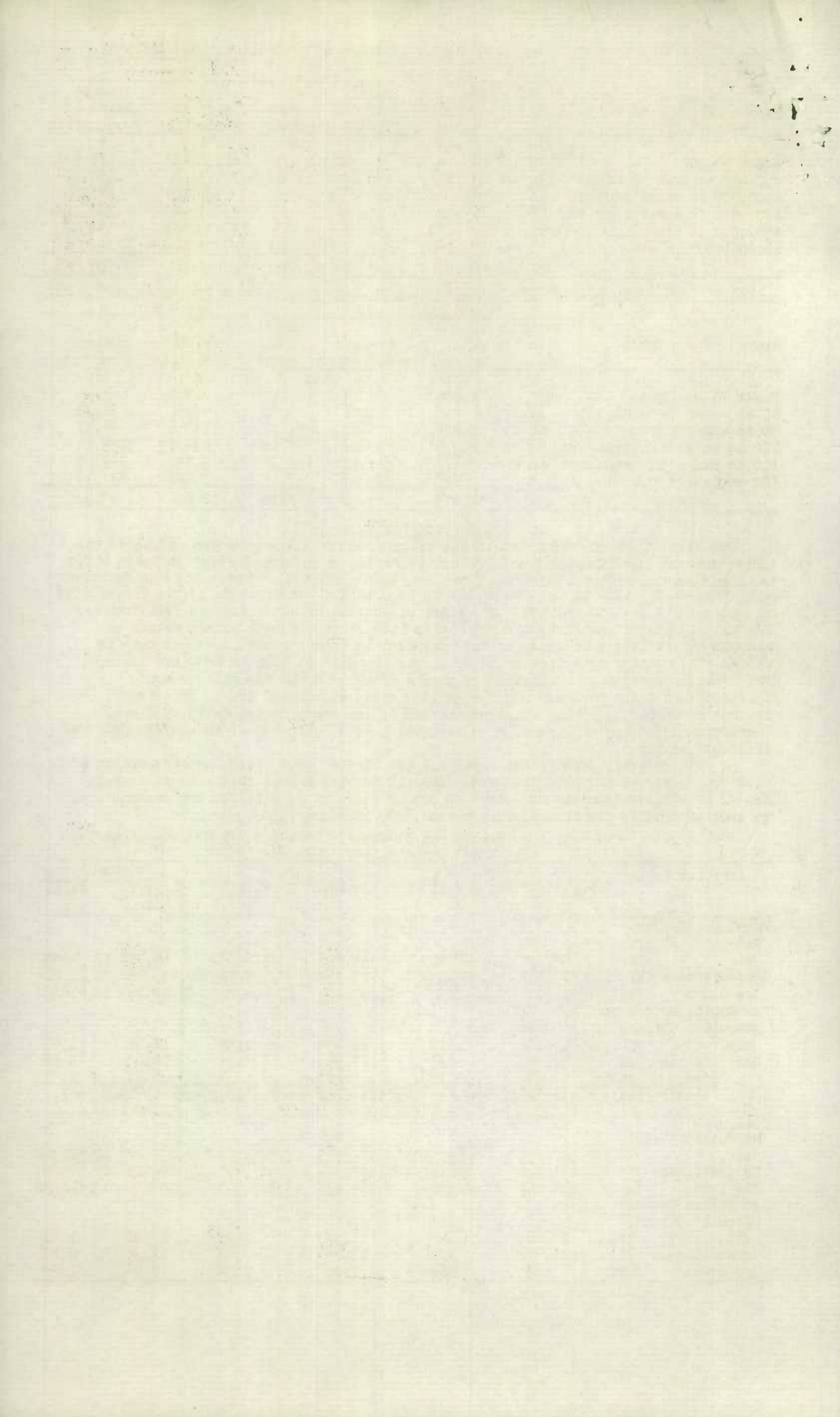
Production Statistics 1929.

The statistics of production in the biscuit, confectionery, cocoa and chocolate industries for the calendar year 1930 are presented by principal items in Table 4, for the Dominion and for each province separately. The quantity of biscuits manufactured rose from 54,723 tons in 1929 to 64,134 in 1930 whilst the value fell from \$18,412,708 in 1929 to \$17,344,958 in 1930. The total production of confectionery fell from 124,360,295 pounds valued at \$22,093,415 in 1929 to 119,493,422 pounds valued at \$28,092,561 in 1930 a decrease of 4.07 per cent in quantity and 12.47 per cent in value. The average price per pound fell from 26 cents in 1929 to 24 cents in 1930. Ice cream production in confectionery plants totalled 2,602,583 gallons worth \$3,751,394, in dairy plants 7,078,039 gallons worth \$9,600,688 and in bakeries 27,541 gallons worth \$60,445. The total production of ice cream in Canada in 1930 was, therefore, 9,708,163 gallons of a selling value of \$13,412,530 or an average price of \$1.38 per gallon.

A summary table showing the total and per capita production and consumption of biscuits, confectionery and ice cream from all sources except that made in private homes, hotels, restaurants and boarding houses where it is made for own consumption, is presented below for the calendar years 1928, 1929 and 1930.

Table 3. Per Capita production of biscuits, confectionery and ice cream for the calendar years 1928, 1929 and 1930.

Articles	1928		1929		1930	
	Quantity	Value	Quantity	Value	Quantity	Value
		\$		\$		\$
Total production-						
Biscuits, plain, etc.	ton	49,380	17,531,019	55,010	18,526,332	64,134 17,344,958
Confectionery lb.		119,473,312	31,355,172	119,913,568	32,739,425	119,493,422 28,092,561
Ice Cream	gal.	8,515,662	11,620,971	9,797,436	13,604,709	9,708,163 13,412,530
Per Capita Production						
Biscuits, plain, etc.	lb.	12.23	1.82	12.23	1.89	12.91 1.75
Confectionery	lb.	12.37	3.25	12.96	3.34	12.03 2.82
Ice Cream	gal.	.88	1.20	1.00	1.39	0.97 1.35
Total and per capita consumption being production plus imports less exports, 1928, 1929, 1930.						
Totals -						
Biscuits, plain, etc.	lb.	100,980,635	17,755,838	112,978,543	18,924,160	130,035,086 17,558,868
Confectionery	lb.	122,131,246	31,699,063	129,822,374	33,086,467	123,100,184 28,541,420
Ice Cream	Gal.	3,515,662	11,620,971	9,797,436	13,604,709	9,708,163 13,412,530
Per Capita Consump.						
Biscuits, plain, etc.	lb.	10.46	1.84	11.53	1.93	13.08 1.77
Confectionery	lb.	12.64	3.28	13.25	3.38	12.39 2.87
Ice Cream	gal.	.88	1.20	1.00	1.39	0.97 1.35



THE BISCUIT, CONFECTIONERY, COCOA AND CHOCOLATE INDUSTRIES IN CANADA, 1930

Production Statistics - Cont'd.

Table 4.- Production by Items for Canada and Provinces, 1929 and 1930

Items of Production	CANADA 1929		CANADA 1930		P.E. ISLAND		NOVA SCOTIA		NEW BRUNSWICK		
	Quantity	Selling Value	Quantity	Selling Value	Quantity	Selling Value	Quantity	Selling Value	Quantity	Selling Value	
Cocoa	lb.	3,122,935	1,091,662	2,418,881	796,849	-	-	-	-	-	-
Chocolate, including coatings	lb.	5,284,932	1,337,729	6,661,735	1,358,834	-	-	-	-	-	-
Cocoa butter 4/	lb.	-	-	1,468,817	328,708	-	-	-	-	-	-
Chocolate Confectionery	lb.	62,397,327	19,534,725	61,584,625	17,872,162	7,308	5,024	4,216,508	1,947,857	5,067,451	957,775
Sugar Confectionery	lb.	62,162,968	12,641,705	57,908,797	10,220,399	165,069	41,215	3,287,576	605,050	2,685,708	482,262
Biscuits, plain & Fancy	ton	54,723	18,412,708	64,134	17,344,958	-	-	-	3/	-	3/
Puddings	-	-	18,652	-	80,871	-	-	-	-	-	3/
Ice Cream	gal.	2,609,551	3,792,247	2,602,583	3,751,394	16,100	23,485	217,204	355,251	1,300	4,030
Popcorn	lb.	1,483,506	560,571	1,165,878	390,731	-	-	-	-	-	-
Pastry, Pies and cakes	-	-	695,489	-	764,332	-	-	-	3/	-	-
Other Products N.E.S. 2/	-	-	4,985,221	-	5,150,364	-	-	-	900,481	-	948,954
Total Value	-	-	63,070,709	-	58,059,602	-	69,724	-	3,808,639	-	2,393,021

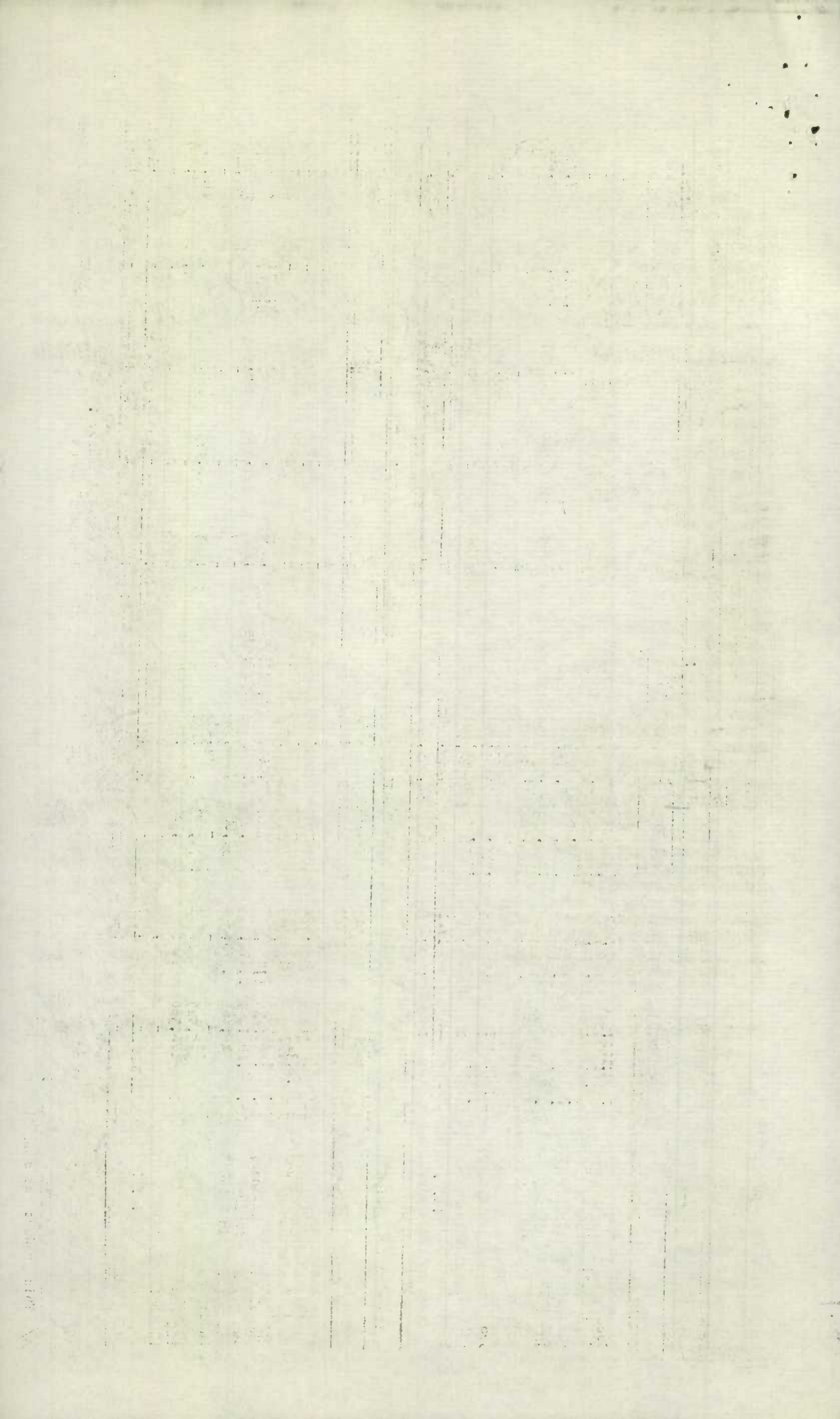
Items of Production	QUEBEC		ONTARIO		MANITOBA		SASK. & ALBERTA		BRITISH COLUMBIA		
	Quantity	Selling Value	Quantity	Selling Value	Quantity	Selling Value	Quantity	Selling Value	Quantity	Selling Value	
Cocoa	lb.	1,847,685	667,758	-	3/	-	-	-	-	-	-
Chocolate, including coatings	lb.	1,318,654	374,743	-	3/	-	-	-	-	-	-
Cocoa butter 4/	lb.	1,468,817	328,708	-	-	-	-	-	-	-	-
Chocolate Confectionery	lb.	19,285,416	5,087,783	30,026,717	9,092,608	1,685,691	286,384	97,981	34,392	1,197,553	460,339
Sugar Confectionery	lb.	18,181,299	2,512,813	26,092,386	5,268,259	4,517,482	682,310	500,350	106,734	2,478,927	521,756
Biscuits, plain & fancy	tons	18,481	4,370,831	35,808	9,696,506	-	3/	-	-	2,053	689,113
Puddings	-	-	-	-	77,133	-	3/	-	-	-	-
Ice Cream	gal.	335,929	531,443	1,374,281	1,929,171	148,395	202,983	140,173	166,983	369,201	538,048
Popcorn	lb.	476,368	110,879	680,386	277,194	-	-	-	-	11,124	2,658
Pastry, Pies & cakes	-	-	85,487	-	300,569	-	3/	-	-	-	-
Other Products N.E.S. 2/	-	-	229,390	-	4,753,878	-	426,968	-	1,837,165	-	137,232
Total Value	-	-	14,299,835	-	31,395,318	-	1,598,645	-	2,145,274	-	2,349,146

Note: Data here given do not necessarily represent the total Canadian production of these commodities since they are also produced in other industries.

2/ Includes macaroni, mincemeat, cocoa butter, peanut butter, chewing gum, syrups, salted and roasted peanuts.

3/ Only one or two firms manufacturing this product. Figures are grouped under "All other Products" so as to prevent disclosure of information concerning individual firms.

4/ This product not specifically asked for previous to 1930.



COST OF MATERIALS USED

The quantity and cost value at the factory or works of the various materials used in the biscuit, confectionery, cocoa and chocolate industry in 1930 is shown in table 5. The total cost of such materials for the year was \$25,044,901 a decrease of \$2,672,988 from 1929. The decrease in the cost of materials is due principally to the decrease in the cost of flour and of sugar used. The average price of these two commodities in 1930 was \$5.60 per barrel of flour, and 4.65 cents per pound for sugar, whilst in 1929 the prices were respectively \$6.18 for flour and 5.25 cents for sugar.

Table 5.- Materials used by quantity and cost value, 1930.

Classes of materials	Unit of	Quantity	Cost value at the factory \$
Flour	Barrels	369,688	2,071,849
Sugar	Pound	84,696,545	3,934,704
Butter	Pound	1,457,691	484,702
Cooking oils	"	477,088	61,024
Lard	"	1,543,372	194,316
Shortening	"	3,241,142	1,035,948
Cream	Gallon	599,176	843,482
Milk, fresh & Skim	"	2,991,316	711,213
Milk, condensed	Pound	4,823,548	438,932
Milk, powered	"	2,483,871	296,202
Eggs	Dozen	424,559	163,734
Fruits, fresh	Pound	473,207	87,154
Fruits, dried	"	2,933,083	346,517
Nuts	"	2,625,632	797,994
Glucose	"	27,163,235	1,120,873
Chocolate and cocoa	"	6,887,859	1,396,781
Cocconut	"	1,450,530	163,415
Cocoa & vanilla beans	"	14,542,530	1,711,648
Cocoa butter	"	5,071,062	1,218,105
Peanuts, green	Lb.	4,711,779	34,124
Peanuts, roasted	"	156,452	18,508
Extracts, essences etc.	-	-	377,187
Chicle	Lb.	998,335	522,068
All other materials (value only)	-	-	2,903,233
Containers of all kinds	-	-	3,811,188
Total cost of materials	-	-	25,044,901

THE BISCUIT, CONFECTIONERY, COCOA AND CHOCOLATE INDUSTRIES IN CANADA, 1930.

CAPITAL INVESTMENT

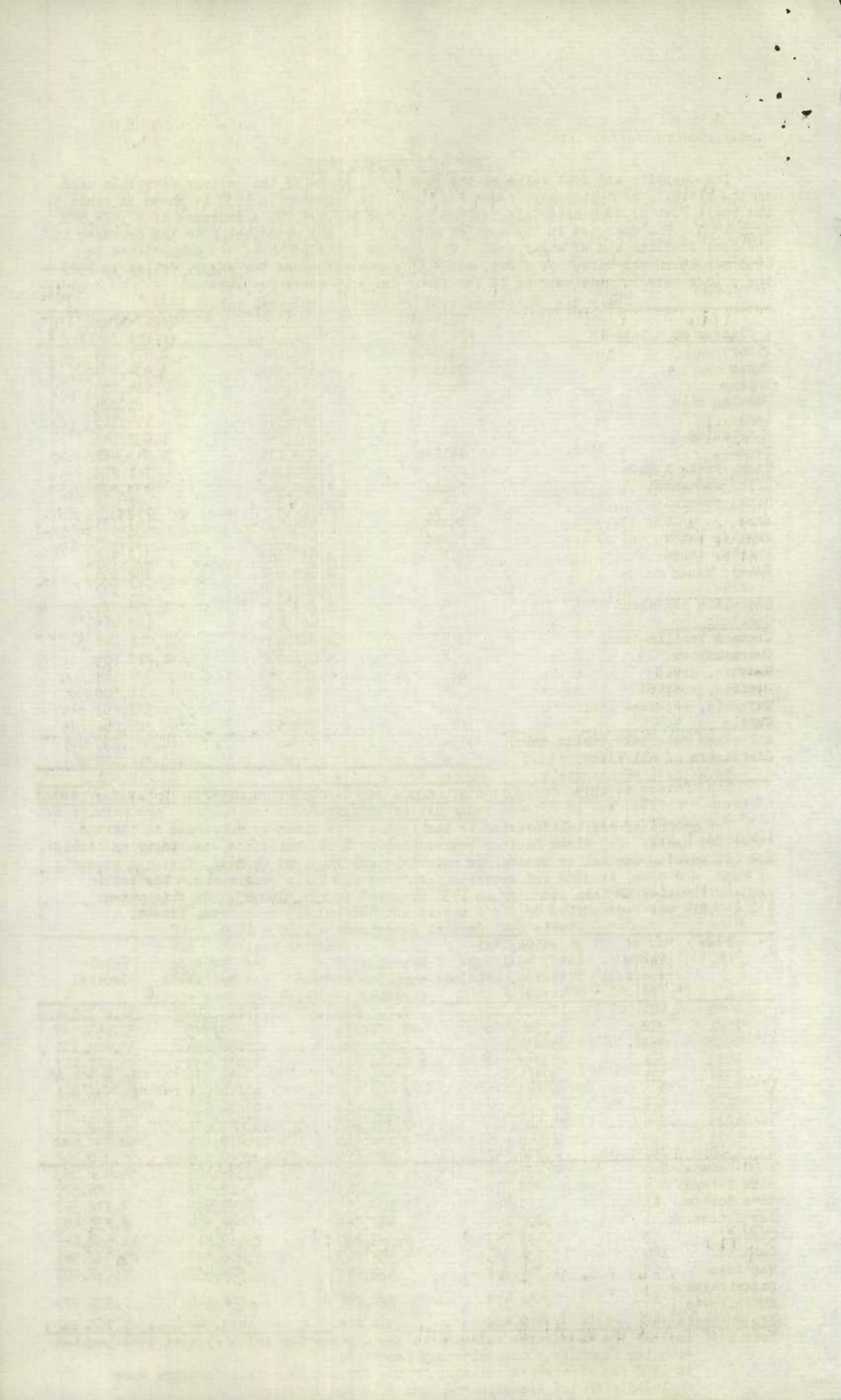
The amount of capital invested in the industry is shown by provinces in table 6, under two heads: (1) fixed capital represented by land, buildings, machinery and tools and (2) working capital by stocks, or materials and supplies on hand, finished products on hand, and cash, trading and operating accounts and bills receivable. The total capital invested in this industry in 1930 amounted to \$54,406,093. Of this amount \$32,255,214 was represented by fixed assets and \$22,150,879 by current assets.

Table 6.- Capital Investment - 1920 - 1930.

Year	No. of plants reporting No.	Fixed Capital		Working Capital		Total Capital \$
		Land, buildings fixtures, machines & tools. \$	Materials & supplies on hand finished products \$	Cash trading and operating accounts etc. \$		
1920	400	17,000,388	7,003,683	7,213,510		31,217,581
1921	372	17,726,776	5,958,868	6,969,945		30,655,589
1922	368	20,839,153	5,678,891	7,162,236		33,680,280
1923	361	22,252,987	6,696,691	7,877,439		36,827,117
1 1924	321	23,719,658	7,006,582	7,830,877		38,557,117
1 1925	320	24,923,724	6,726,871	9,119,501		40,770,096
1 1926	315	27,016,666	6,770,258	8,635,454		42,422,378
1 1927	294	28,583,385	7,332,655	10,533,271		46,448,311
2 1928	283	32,140,436	8,744,965	11,467,681		52,353,082
2 1929	281	32,276,540	9,715,298	13,329,064		55,320,902
1930-Canada	280	32,255,214	9,421,674	12,729,205		54,406,093
P.E. Island	4	38,672	28,349	18,558		75,579
Nova Scotia	11	3,110,466	1,106,197	759,659		4,978,322
New Brunswick	7	1,000,191	487,358	742,854		2,230,403
Quebec	53	6,792,747	2,389,880	2,369,517		11,552,144
Ontario	120	17,736,763	4,535,213	7,666,585		29,938,561
Manitoba	19	1,314,368	232,847	344,492		1,891,707
Saskatchewan) and Alberta)	18	1,432,478	284,246	254,146		1,970,870
Pr. Columbia	48	829,529	365,584	573,394		1,768,507

Note 1:- In 1924 the statistics relating to the Chewing Gum industry were incorporated with the Biscuits & Confectionery Industry.

2. In 1928 the statistics relating to the Cocoa & Chocolate Industry were included with the Biscuits and Confectionery Industry.



EMPLOYMENT STATISTICS

Statistics of employment in the biscuits, confectionery, cocoa and chocolate industries during the calendar year 1930 are presented in the following tables:-

Table 7. Employees by number, sex and remuneration.

Table 8. Wage-earners by months.

The total number of persons at employment whether on salary or wage payments is shown by sex and remuneration for the Dominion and the provinces in table 7. There was a decrease in 1930 of 782 in the total number of persons employed whether on salaries or wages, with a decrease of \$1,661,208 in the amount of salaries and wages paid.

Table 7.- Employees, Salaries and Wages by Provinces, 1930.

Provinces	Employees on Salaries			Employees on Wages		
	Male No.	Female No.	Salaries \$	Male No.	Female No.	Wages \$
Canada	1,410	662	3,607,864	4,497	5,722	7,496,804
P. E. Island	2	1	2,750	12	24	
Nova Scotia	158	52	392,388	396	492	718,805
New Brunswick	39	42	127,021	219	312	332,027
Quebec	436	116	830,863	1,276	1,530	1,672,602
Ontario	617	387	1,865,671	2,054	2,845	3,821,988
Manitoba	43	22	121,988	182	197	308,816
Saskatchewan) and Alberta)	49	15	121,412	173	91	290,607
British Columbia	66	27	145,771	185	231	338,373

The number of wage earners employed during each month of the year is shown by sex in table 8. The months of highest employment were September, October and November, whilst those of lowest employment were January, February and April. The average number employed monthly was 10,219 of whom 4,497 were males and 5,722 were females. The average employment by months in the tables of this report is the sum of the averages of individual plants based on the months in actual operation and not the average for the calendar year.

Table 8.- Monthly Employment of Wage earners, 1930.

Months	Male No.	Female No.	Total No.	Months	Male No.	Female No.	Total No.
January	4,264	5,306	9,570	July	4,590	5,651	10,241
February	4,303	5,368	9,671	August	4,567	5,842	10,409
March	4,331	5,410	9,741	September	4,610	6,045	10,655
April	4,288	5,264	9,552	October	4,617	6,034	10,651
May	4,402	5,352	9,754	November	4,586	6,173	10,759
June	4,526	5,636	10,162	December	4,391	5,884	10,275
Total Employment during the year.					53,475	67,965	121,440
Average monthly employment.					4,497	5,722	10,219

POWER INSTALLATION

The classes of power installed in the industry in 1930 are shown in table 9 by number of units installed and by horsepower according to manufacturer's rating. The horsepower used for manufacturing purposes is found by the addition of items 1, 2, 3 and 4a and totalled 20,419 h.p. Boilers installed numbered 102 with a boiler h.p. capacity of 8,781.

Table 9.- Power Installation, 1930.

Classes of power	Number of Units	Horsepower according to manufacturer's rating
1. Steam engines and turbines	41	2,777
2. Oil, gas and gasoline engines	2	12
3. Hydraulic turbines or water wheels	3	320
4. Electric motors:-		
(a) Operated by purchased power	2,600	17,310
(b) Operated by power generated by establishment	25	68
Total power for manufacturing purposes	2,646	20,419
Total electric motor installation	2,625	17,378

FUEL CONSUMPTION

The quantity and cost value of the various classes of fuel used in 1930 are shown in table 10. Coal and coke valued at \$262,655 was the principal fuel used followed by gas valued at \$128,839 while the amount spent for electric power totalled \$280,355.

Table 10.- Fuel Consumption in Canada by Classes, 1930.

Classes of fuel	Units of Measure	Quantity	Cost value at factory or works	Average cost per unit
Bituminous coal, all grades	tons of 2,000 lb	43,567	262,655	6.03
Anthracite coal, all grades	" "	6,628	73,155	11.03
Lignite coal, all grades	" "	4,473	22,362	5.00
Coke	" "	2,356	20,273	8.60
Gasoline	Imp. gals.	2,771	684	.239
Fuel oils	" "	480,569	36,055	.075
Wood	Cord	657	4,294	6.53
Gas, artificial and natural	1,000 cu. ft.	190,392	128,839	.67
Electricity purchased for power only	-	-	280,355	-
All other fuel (not specified) -	-	-	-	-
Total cost of fuel & electricity	-	-	672,000	-

- 7 -
THE BISCUIT, CONFECTIONERY, COCOA AND CHOCOLATE INDUSTRIES IN CANADA, 1930.

IMPORTS AND EXPORTS

Table 11 presents the imports for consumption and the exports of Canadian produce for the calendar year 1930 by commodities and countries. Including imports of chicle, cocoa and chocolate, the total value in 1930 of imports was \$4,865,999 while in 1929 the total value was \$5,848,230, being a decrease during the year of \$982,231. The value of Canadian goods exported during the year 1930 was \$888,450 as against \$993,668 in 1929 or a decrease of \$105,218.

Table 11.- Imports and Exports of Biscuits, Confectionery, Cocoa and Chocolate during the calendar year 1930.

I M P O R T S			I M P O R T S		
Articles by countries	Quantity	Value	Articles by countries	Quantity	Value
Biscuits, not sweet-ened	lb. 2,436,596	315,394	Cocoa butter lb.	5,424,918	1,150,761
United Kingdom	1,542,939	177,451	United Kingdom	80,000	17,866
United States	725,450	100,224	United States	247,846	54,872
Sweden	114,721	29,067	Germany	27,376	6,385
Other Countries	53,486	8,562	Netherlands	4,866,601	1,031,072
Biscuits, sweetened lb.	896,890	174,339	Brazil	203,095	40,566
United Kingdom	321,101	92,599	-	-	-
United States	515,346	70,107	Cocoa paste of liquid, not sweet-ened	lb. 30,326	5,229
Other Countries	60,443	11,633	United Kingdom	-	-
Confectionery, coated with or containing chocolate	lb. 690,887	166,930	United States	18,605	2,077
United Kingdom	179,906	56,289	Other Countries	11,721	3,152
United States	231,945	44,997	Cocoa paste or liquid sweetened	lb. 90,941	18,328
Netherlands	147,963	29,694	United Kingdom	-	-
Switzerland	54,419	16,300	United States	42,577	9,470
Other Countries	76,654	19,650	Netherlands	47,932	8,691
Sugar candy and confec-tionery of all kinds, n.o.p.	lb. 4,390,878	697,632	Other Countries	432	167
United Kingdom	2,985,866	476,752	Cocoa or chocolate in powdered form	lb. 1,755,418	151,562
United States	999,233	158,385	United Kingdom	117,431	22,420
France	57,603	11,301	United States	758,738	84,414
Other Countries	348,156	51,194	Netherlands	848,149	43,443
Chicle or sappato gum, crude	lb. 1,254,750	555,346	Other Countries	31,100	1,285
United States	812,095	319,469	Cocoa or chocolate n.o.p.	lb. 41,659	7,920
British Honduras	442,655	235,877	United Kingdom	19,653	5,671
Cocoa beans, not roasted or ground cwt.	171,092	1,622,648	United States	19,772	1,752
United Kingdom	21,033	196,025	Other Countries	2,234	497
United States	22,009	246,083	Total imports by Countries	-	4,865,999
British West Africa	31,396	272,041	United Kingdom	-	1,045,073
Jamaica	18,215	134,082	United States	-	1,091,850
Trinidad and Tobago	29,932	299,431	Br. Honduras	-	235,877
Other Br. West Indies	32,287	294,229	British West Africa	-	272,041
Ceylon	4,203	100,151	Jamaica	-	134,082
Venezuela	7,624	77,746	Trinidad and Tobago	-	299,431
Other Countries	333	2,860	Other Br. West Indies	-	294,229
			Netherlands	-	1,112,900
			France	-	11,301
			Sweden	-	29,067
			Switzerland	-	16,300
			Germany	-	6,385
			Brazil	-	40,566
			Venezuela	-	77,746
			Ceylon	-	100,151
			Other Countries	-	99,000

Table 11.- Imports and Exports of Biscuits, Confectionery, etc.
during the calendar year 1930.

E X P O R T S			
Articles by countries		Quantity	Value
			\$
Biscuits & bread	cwt.	15,664	265,733
United States		9,404	169,137
Bermuda		683	9,818
Br. Guiana		354	4,371
Newfoundland		1,333	21,884
Trinidad and Tobago		855	17,068
Jamaica		318	3,652
Other B. W. Indies		1,432	18,777
Barbadoes		554	8,015
Other Countries		731	13,011
Candy	Lb.	1,475,003	415,703
United Kingdom		5,788	2,148
United States		2,361	635
Br. South Africa		348,013	93,096
Newfoundland		481,180	142,026
New Zealand		417,780	112,800
China		56,606	18,324
Other Countries		753,275	46,674
Confectionery, n.o.p. (Value only)		-	96,717
United Kingdom		-	2,398
United States		-	9,267
Newfoundland		-	42,003
Australia		-	4,521
New Zealand		-	14,275
Br. South Africa		-	6,794
Other Countries		-	17,459
Chewing gum (Value only)		-	110,297
United Kingdom		-	88,208
Newfoundland		-	19,449
United States		-	61
Other Countries		-	2,579
Total Exports by Countries (Value only)			
United Kingdom		-	92,754
United States		-	179,100
Australia		-	4,521
British Guiana		-	4,371
British South Africa		-	99,890
China		-	18,324
Trinidad and Tobago		-	17,068
Jamaica		-	3,652
Bermuda		-	9,818
Other Br. West Indies		-	18,777
Newfoundland		-	225,362
New Zealand		-	127,075
Barbadoes		-	8,015
Other Countries		-	79,723
Total Exports		-	888,450

LIST OF FIRMS IN COCOA, CHOCOLATE, CONFECTIONERY,
BISCUITS & ICE CREAM INDUSTRY.

Prince Edward Island.

Gaudet, J. H.		Summerside
Hunter, Mrs. A. L.		Summerside
National Candy Limited		Charlottetown
White, Thomas	109 Grafton St.,	Charlottetown

Nova Scotia.

Antigonish Ice Cream Mfg. Co. Ltd.,		Antigonish
Beveau, Geo. J. & Alfred Conn.		Yarmouth
Western Ice Cream Ltd.	14 Townsend,	Sydney
Halifax Creamery, F. Hart	257 Brunswick,	Halifax
Hamilton, G.J. & Sons Ltd.	Commercial St.,	Pictou
Lynch, P.F.	162 Prince St.,	Sydney
Moirs Limited	128 Argyle St.,	Halifax
Murphy, M.B.	935 Prince St.,	Truro
Porter, B.L. & C.E.		Yarmouth
Reid Chocolate Co.	Cor. Spring & Albion Sts.	Amherst
Yeaton, Geo. H. & Son Ltd.		Hantsport

New Brunswick.

Canada Biscuit Co. Ltd. (Marven plant)	81 King St.,	Moncton
Corona Co. Ltd.	277 Union St.,	St. John
Ganong Bros. Ltd.		St. Stephen
Golden, W. H.	374 Queen St.,	Fredericton
Logges & Marossis		Campbellton
Rankine, T. & Sons Ltd.	9 George St.,	St. John
White, Frank	239 Wentworth St.,	St. John

Quebec.

Aetna Biscuit Co. Ltd.,	1801 ave. Têlerimier,	Montreal
Allan, C.S. & Co. Ltd.,	776 Chatham St.,	Montreal
Baker, Walter & Co. of Canada, Ltd.,	3510 Albert St.,	Montreal
Belanger, J.C.,	3920 Hochelaga St.,	Montreal.
Belanger, L. H. & Cie.,	591 ave. Ash,	Montreal
Bonbon Candiac (Canada) Ltd.,	128 St. Dominique St.,	Quebec
Bussier, P.	7148 Boyer St.,	Montreal
Canadian Popcorn Co.,	1210 Berger St.,	Montreal
Caron, Jules	Cap St. Ignace, Co. Montmagny,	Quebec.
Charbonneau, Ltd.,	1800 Nicolet St.,	Montreal
Confectioners Company Ltd.,	2052 St. Lawrence Blvd.,	Montreal
David & Frere,	1930 Champlain St.,	Montreal
Dufresne, H. & Co. Ltd.,	5577 St. Dominique St.,	Montreal
Federal Confectionery,	524 Duluth St.,	Montreal
Fry, J.S. & Sons, Ltd. (Canada)	2025 Masson St.,	Montreal
Gagnon, C. H.	21 Cote Labodie	Levis
Gibson, Robert & Sons (Canada)	442 St. Gabriel St.,	Montreal
Godin, J.N.	117 St. Philippe St.,	Trois Rivieres
Goody Shoppe (A. Naoum)	291 Mount Royal Ave. W.,	Montreal
Goudey Gum Co. of Canada Ltd.,	1910 St. Antoine St.,	Montreal
Hamel, L.G.	6750 Blvd. Monk	Montreal
Homemade Candy Store Reg'd.,	1327 Mount Royal St. E.,	Montreal
Honey Brook Ltd.,	3081 Ontario St. E.,	Montreal
Joliette Biscuit Co.,	3 Champlain St.,	Joliette
Julien, George	161 Montmagny St.,	Quebec
Labbe, P.	192 Notre Dame St.,	Thetford Mines
Lachapelle, Ovila	St. Esprit Montcalm Co.,	
Lalumiere & Frere	2229 St. Catherine St. E.,	Montreal
La Manufacture Biscuits		
et Confiseries de Scott Limited,	Scott Junction,	Dorchester Co.
Laura Secord Candy Shops, Ltd.,	869 Viger Ave.,	Montreal
Laurier Candy Co.,	1289 Maisonneuve St.,	Montreal
Leclerc, Frs.,	163 Arago St.,	Quebec
Lowney, Walter M. & Co. of Canada Ltd.,	350 Inspector St.,	Montreal
Martel, Elzear & Cie.,	85 rue Lajoie,	Joliette
Masson & St. Germain	720 ave. Marin,	Montreal
Molasses Crispette Co. Ltd.,	157 Lagachetiere St. W.,	Montreal
National Licorice Co.,	4211 Rouen St.,	Montreal
O-Pee-Chee Co. Ltd.,	4866 St. Lawrence Blvd.,	Montreal

Quebec. (Cont'd.)

- 10 -

Page & Shaw	3187 St. James St.,	Montreal.
Pepin & St. Germain	4058 Parthenais St.,	Montreal.
Pichet, G.N.,	4028 Ontario St. E.,	Montreal.
Purity Ice Cream Co.,	1076 Mountain St.,	Montreal.
Regal Chocolates Ltd.,	2551 Papineau St.,	Montreal.
Regina Candy Co.,	6523 St. Lawrence Blvd.,	Montreal.
Sacharen Bros.,	5364 St. Lawrence Blvd.,	Montreal.
Standard Confectionery Co.,	1351 Notre Dame St. E.,	Montreal.
Stuart, Compagnie de Biscuits,	235 Laurier Ave., W.,	Montreal.
Thoum, Najceb,	789 St. Catherine St. E.,	Montreal.
Vaillancourt Limitee,	1691 Dorion St.,	Montreal.
Verdon, D. Limitee,	230 rue Ste. Helene,	Quebec.
Viau Biscuit Corporation Ltd.,	60 rue St. Charles Borromée,	Joliette.
Viau Biscuit Corporation Ltd.,	4951 rue Ontario Est.,	Montreal.

Ontario.

Abdallah, Alex.	258 Dundas St.,	London.
Alchin, W.R. & Co.,	26 Simcoe St.,	Oshawa.
Amis, Adolph,	85 Queen St. South,	Kitchener.
Artemis Sweets,	148 Colborne St.,	Brantford.
Balmer, H.B.	22 Geary Ave.,	Toronto 4.
Beaton, W.L.,	1097 Wellington St.,	Ottawa.
Beech-Nut Co. of Canada, Ltd.,	Cor. of Cumberland & Sanford Aves.,	Hamilton.
Betty Brown Candy Co. Ltd.,	624 King St. West,	Toronto 2.
Bigham, W. R.,	144 Thames St., South,	Ingersoll.
Bingham's Ltd.,	146 Yonge St.,	Toronto 2.
Bodley, C.J., Ltd.,	99 Ontario St.,	Toronto 2.
Boomer Ltd.,	181 Dundas St.,	London.
Buckberrough, C. A.,	705 Bruce Ave.,	Windsor.
Bunnell Bros.,	294 Lisgar St.,	Ottawa.
Burger's Ltd.,	92½ Yonge St.,	Toronto 2.
Cairn's Creameries Ltd.,	Cor. Magdalen & Ellen Aves.,	Niagara Falls.
Campbell, Clay & Janetos, J.,	James St., Cor. of Creek,	Wallaceburg.
Canada Biscuit Co. Ltd.,	82-92 Dundas St.,	London, Box 550
Canadian Chewing Gum Co. Ltd.,	14 Dickens St.,	Toronto 8.
Candyland Company,	116 Upper Wyndham St.,	Guelph.
Chatham Candy Kitchen,	32 King St. West,	Chatham.
Christie, Brown & Co. Ltd.,	139-149 Sterling Road,	Toronto 3.
Christie, Brown & Co., Ltd.,	202 King St., East,	Toronto 2.
Coates Candy Co.,	Hurontario St.,	Collingwood.
Cross Chocolate Co.,	107 Catherine St.,	Hamilton.
Crothers, W.J. & Co., Ltd.,	209 Wellington St.,	Kingston.
Cunningham, Chas. A.,	56 Bay St.,	Kingston.
Dainty Confections Ltd.,	107 Atlantic Ave.,	Toronto 3.
Danos, George,	475 Dundas St.,	Woodstock.
Danziger, Hyman,	125 Denison Ave.,	Toronto.
Denison, Alexander,	1514 Dundas St. West,	Toronto 3.
Devonshire Manufacturing Co.,	200 Sussex Mews,	Toronto 4.
Diana Sweets Ltd.,	187 Yonge St.,	Toronto 2.
Dickens, Ed. F. & Son,	215 Front St.,	Belleville.
Doerr, C. H. & Co. Ltd.,	128 & 132 West Weber St.,	Kitchener.
Eaton, T. & Co., Ltd.,	190 Yonge St.,	Toronto.
Enid, F.	130½ Queen St., East,	Toronto 2.
Evison, S.	1750 St. Clair Ave.,	Toronto 9.
Fenny, J. W. Candy Co.,	369 Sorauren Ave.,	Toronto.
Foster, G. H.	1595 Dundas St. W.,	Toronto 3.
Georgas, Michael	20 Kent St.,	Lindsay.
Grant, T. D., & Co., Ltd.,	107 Wyndham St.,	Guelph.
Grierson, Charles H.	207 Ottawa St., North,	Hamilton.
Griesbach, O.S., Confectionery	Box 518,	Collingwood.
Hamblin-Metcalf, Ltd.,	Cor. Weber & Cameron Sts.,	Kitchener.
Hamilton Chewing Gum Ltd.,	52 John St. North,	Hamilton.
Harry Hook Co.,	60 Roselawn Ave.,	Toronto.
Hazlitt, W. S.	362 Bathurst St.,	Toronto 2.
Heller, George,	156 King St.,	Chatham.
Horncastle Bros.,	209 King St., East,	Hamilton.
Hunts Ltd.,	62-74 Alcorn Ave.,	Toronto 5.
Imperial Biscuit Co.,	12 Wilson St.,	Guelph.
Jamieson, D. C.	106 South Christina St.,	Sarnia.
Jamieson, W. F.,	74 Main St.,	Galt.

Ontario. (Cont'd.)

Jenny Lind Candy Co. Ltd.,	301 Lansdowne Ave.,	Toronto.
Kerr Bros.,	51 Wolsely St.,	Toronto 2.
King, Mrs. E.R.	377 Dundas St.,	Woodstock.
Laing & Sons,	169-171 King William St.,	Hamilton.
Lauder, Charles Co.,	95-97 Ontario St.,	Toronto 2.
Laura Secord Candy Shops Ltd.,	60 Bathurst St.,	Toronto 2.
Legault, Jos.	4 Bridge St.,	Belleville.
Life Savers Ltd.,	47 Water St.,	Prescott.
Loeb, M. Ltd.,	429 Sussex St.,	Ottawa.
Lyriotakis M.,	140 King St. West,	Brockville.
Manjuris & Makris,	1306 Bloor St. West,	Toronto 4.
Manor Candy Works	2037 Yonge St.,	Toronto.
Marathon Candy Kitchen,	231 George St.,	Peterboro.
Marsh, V. J.,	65 Campbell Ave.,	Windsor.
Martha Jane Agencies,	363 Sorauren Ave.,	Toronto.
Mason's Confectionery,	58 Wyandotte St.,	Walkerville.
Maoud, Geo.	238 Princess St.,	Kingston.
Mays, James Xavier,	18 King St. West,	Chatham.
Moffatt, J. M.	148 Ottawa St., North,	Hamilton.
Moore, Peter,	260 Front St.,	Belleville.
Moskos, James,	John St.,	Arnprior.
Neilson, Wm., Ltd.,	277 & 307 Gladstone Ave.,	Toronto 3.
Olympia Tea Rooms,	106 Kent St.,	Lindsay.
O-Pee-Chee Co. Ltd.,	430 Adelaide St.,	London.
Palmer, N.E.,	61 Main St., Box 355,	Galt.
Panaritis, G.,	9 Prospect Ave.,	Cobalt.
Paterson, Wm. Ltd.,	32 Colborne St.,	Brantford.
Patterson Candy Co., Ltd.,	951 Queen St. West,	Toronto 3.
Peter Pan Products	1386 Bloor St. West,	Toronto.
Peterson Bros.,	Almonte.	
Pope Bros.,	Main St., Box 128,	Picton.
Prangle, J.W.,	Front St.,	Strathroy.
Purity Popcorn Ltd.,	148 Ossington Ave.,	Toronto 3.
Queen Candy Works,	5 Fenning St.,	Toronto 3.
Rankin, H. G.,	81 Ontario St.,	Stratford.
Regal Candy Store,	54 King St. West,	Hamilton.
Roberts, Mrs. K. A.,	50 Market St.,	Brantford.
Robertson Bros. Ltd.,	103 Queen St. East,	Toronto 2.
Rob. Roy Candy Co. Ltd.,	860 Richmond St. West,	Toronto 3.
Rogers, Wm. E.,	207 Bank St.,	Ottawa.
Powntree Co., Ltd.,	72-90 Sterling Road,	Toronto 3.
Ryan Bros.,	769 Dovercourt Rd.,	Toronto.
Sanders & Halcombe	389 Talbot St.,	St. Thomas.
Schnieder, H.	Box 868,	Brampton.
Thomas, J.W.,	70 Erie Ave.,	Brantford.
Tickell, W.P.,	Walton St.,	Port Hope.
Toronto Candy Chocolate Works,	176 Elm St.,	Toronto 2.
Toronto Creamy Toffee Co.,	859 Lansdowne Ave.,	Toronto.
Townley, J. R.,	517 St. Clair Ave., West,	Toronto, 10.
Vair & Balkwell,	323 Talbot St.,	St. Thomas.
Victoria Candy Kitchen,	165 St. Paul St.,	St. Catharines.
Walker, J. & J.,	Church St.,	Brockville.
Ward, J. J.,	1046 Gerrard St. East,	Toronto 8.
Washington Northy Estate,	Fenelon Falls,	
Watson, R. G.,	363 Sorauren Ave.,	Toronto 3.
Westgate, W. T.,	215 Sandwich St.,	Ford (East Windsor).
Weston, Geo. Ltd.,	134 Peter St.,	Toronto 2.
Willards Chocolates Ltd.	443 Wellington St. West,	Toronto 2.
Wipper, P. H.,	207 St. Paul St.,	St. Catharines.
Wolff, Herman,	241-3 Queen St. West,	Toronto.
Wood, James,	281 Roncesvalles Ave.,	Toronto 3.
Wright, H. B. & Co.,	60 King St. West,	Brockville.
Wrigley, Wm. Jr. Co. Ltd.,	235 Carlaw Ave.,	Toronto 8.
Yeates, Chas. Co. Ltd.,	8 Paisly St.,	Guelph.

Manitoba.

Barter, Ernest,	564 Arlington St.,	Winnipeg.
Bertrand, Wm. & Co.,	918 Rosser Ave.,	Brandon.
Fond & Ronald	690 McGee St.,	Winnipeg.
Foyd, W. J. & Co. Ltd.,	Portage & Spence Sts.,	Winnipeg.

Manitoba, (Cont'd.)

Canada Biscuit Co. Ltd.,	311 Ross Ave.,	Winnipeg.
Chislett, Harry W.,	491 Jubilee Ave.,	Winnipeg.
Chocolate Shop (Bhans, Scgayias & Manos)	263 Portage Ave.,	Winnipeg.
Emma, J.	455 Portage Ave.,	Winnipeg.
Galpern, L.	4 Traders Building,	Winnipeg.
Jones, Geo. W.,	273 Huntleigh St.,	Winnipeg.
McNicol, A. R. Ltd.,	280 Portage Ave.,	Winnipeg.
Master, P. H.	33 Princess St.,	Winnipeg.
Moran, A. J. & Co., Ltd.,	561 Portage Ave.,	Winnipeg.
Picardy Candy Ltd.,	540 Broadway & Colony Sts.,	Winnipeg.
Progress Candy Co.,	443 King St.,	Winnipeg.
Purity Ice Cream Co. Ltd.,	234 Pritchard Ave.,	Winnipeg.
Royal Candy Kitchen	622 Main St.,	Winnipeg.
Shore, S. Candy Co.,	245 Jarvis Ave.,	Winnipeg.
Simonot, P.	254 Main St.,	Winnipeg.

Saskatchewan

Home Candy Works,	1796 Hamilton St.,	Regina.
Home Candy Works,	630 Broadway St.,	Saskatoon.

Alberta

Bridgeman, J.N.,	1217-1st St. West,	Calgary.
Campbell, A.J.	1514-14th St. West,	Calgary.
Canada Biscuit Co. Ltd.,	11313-83rd St.,	Edmonton.
Climie Chocolates Ltd.,	9912-90th Ave.,	Edmonton.
Edmonton City Dairy Ltd.,	Edmonton.	
Independent Biscuit Co. Ltd.,	438 Cor. 11th Ave. & 4th St. E.,	Calgary.
Maple Leaf Candy Co.,	140-8th Ave., East,	Calgary.
Mayson, Wm.	10045 Jasper Ave.,	Edmonton.
Oliver, Mrs. S. H.,	10053 First St., West,	Calgary.
Palace Confectionery,	333-Fifth Ave., South,	Lethbridge.
Pavey's Candy Co. Ltd.,	9627-105a, Avenue,	Edmonton.
Pinckney Ltd.,	10444 Whyte Ave.,	Edmonton.
Plunkett & Savage,	224-9th Ave., West,	Calgary.
Rochons Ltd.,	122a-8th Ave., West,	Calgary.
Rocque, Murphy & Pfeifer,	10231-96th St.,	Edmonton.
Taylor & Son,	Grand Prairie,	

British Columbia

Airline Candy Co.,	1927 Second Ave., West,	Vancouver.
Baines, F.J.H.,	1409 Douglas St.,	Victoria.
Forland Ice Cream Co. Ltd.,	1520-6th Ave., West,	Vancouver.
Chatterson, C.A.	3047 Granville St.,	Vancouver.
Clark-Unwin Confectionery Co. Ltd.,	144 Water St.,	Vancouver.
Craven Candy Co.,	507 Gorge Rd.,	Victoria.
Dad's Cookie Co.,	401 Broadway St.,	Vancouver.
Davenport Ice Cream Co.,	124 Prideaux St.,	Nanaimo.
Dominion Biscuit Co.,	990 Powell St.,	Vancouver.
Dot Candy Co., Ltd.,	1729 Albert St.,	Vancouver.
Emad, Elias,	317 Third Ave., West,	Prince Rupert.
Empress Candy Co.,	974 Granville St.,	Vancouver.
French, Charles,	Powell River.	
Frisco Candy Co.,	716 Davis St.,	Vancouver.
Garrett Smith Candy Co.,	1237 Rudlin,	Victoria.
Harris, W. H. & David,	5704 Victoria Rd.,	South Vancouver.
Hazelwood Creamery Ltd.,	351-355 Keefer St.,	Vancouver.
Irving, Fred,	568 Broadway St.,	Vancouver.
Kelly Confection Co., Ltd.,	1106 Mainland St.,	Vancouver.
Korn Confectionery Co.,	763 West Broadway,	Vancouver.
Laird & Cuthbertson Ltd.,	1006 Pender St., East,	Vancouver.
Liberty Candy Kitchen,	652 Yates St.,	Victoria.
McKenzie, Mrs. H.	33 Victoria Crescent,	Nanaimo.
McKillop, K.G.,	2060 Trafalgar St.,	Vancouver.
Mainland Confectionery Co. Ltd.,	1090 Hamilton St.,	Vancouver.
Manning, Horace	McKenzie Ave.,	Revelstoke.
Mayson, Thos. S.	1037 Granville St.,	Vancouver.

British Columbia. (Cont'd.)

National Biscuit & Confection Co. Ltd.,	1076-1st Ave. West,	Vancouver.
Okanagan Candy Co.,	Main St.,	Penticton.
Ormonds Ltd.,	234 Mary St.,	Victoria.
Pauline Johnson Candy Shop,	136 Water St.,	Vancouver.
Payne, Mrs. E. W.,	2641-4th Ave., West,	Vancouver.
Port O'Van Ice Cream Ltd.,	1170 Hornby St.,	Vancouver.
Princess Candy Co.,	977 Granville St.,	Vancouver.
Purdy, R. C., Ltd.,	675 Granville St.,	Vancouver.
Rochon's (B.C.) Ltd.,	685 Alpha St.,	Victoria.
Rogers Chocolates,	913 Government St.,	Victoria.
Royal City Candy Shop,	654 Columbia St.,	New Westminster.
Rutter, Wm. H.,	835 Commercial Drive,	Vancouver.
Sinclair Bros.,	310 Cordova St.,	Vancouver.
Stevenson's Confectionery,	725 Yates St.,	Victoria.
Turner's Candy Co.,	207 Kingsway,	Vancouver.
Walds, Aaron,	Fernie.	
Weeden, Mrs. Leonie,	1032 Robson St.,	Vancouver.
Welch's Ltd.,	814 Robson St.,	Vancouver.
White's Ltd.,	Qualicum Beach.	
Wiper, Ernest,	726½ Yates St.,	Victoria.
Worsley, Arthur,	131 Cordova St.,	Vancouver.

