

32-203 C-1

CANADA

DOMINION BUREAU OF STATISTICS

CENSUS OF INDUSTRY

REPORT

on the

BREAD & OTHER BAKERY PRODUCTS

in

CANADA

1923

Published by Authority of the Hon. Thos. A. Low. M. P.,
Minister of Trade and Commerce.

OTTAWA

1925

10 802-28

NOTE.- The statistics published in the present statement include only the statistics of such manufacturing establishments that make Bread, Pastry etc., as their principal product. The statistics relating to specific products are therefore not to be regarded as comprehensive as products like, bread, buns, pies, cakes and puddings are also found as secondary products of other industries such as Biscuits and Confectionery.

(See summary table, page 3.)

DOMINION BUREAU OF STATISTICS

CENSUS OF INDUSTRY

OTTAWA CANADA

Dominion Statistician: R. H. Coats, B.A., F.S.S.(HON). F.R.S.C.
 Chief, Census of Industry: J. O. Macpherson.

THE BREAD AND OTHER BAKERY PRODUCTS INDUSTRY IN CANADA

1923

Ottawa, March 15th, 1925.- The report on the Baking Industry in Canada is herewith presented for the calendar year 1923. The number of individual establishments reporting during the year was 1,980, an increase over 1922 of 115 plants. The location of the plants is summarized in the following table by provinces for 1922 and 1923.

Provinces	1922	1923
Prince Edward Island.....	7	7
Nova Scotia.....	37	49
New Brunswick.....	42	49
Quebec.....	628	611
Ontario.....	762	831
Manitoba.....	73	102
Saskatchewan.....	79	103
Alberta.....	103	112
British Columbia and Yukon.....	134	116
Total for Canada..	1,865	1,980

This report is distinct from that of the Biscuit and Confectionery Industry and yet there will be found in both reports similar items of production so that in order that a complete and comprehensive survey of the industries may be obtained, a study of both reports will be found necessary. A subsequent paragraph under the head of "Production" will deal with this feature.

PRINCIPAL STATISTICS

A table showing the principal statistics of the industry for Canada and the provinces is presented below. Compared with 1922, the number of plants reporting showed an increase of 115; capital investment rose from \$25,551,612 to \$28,231,856; persons employed from 10,455 to 10,906; salaries and wages from \$11,860,619 to \$12,249,008; value of products from \$47,845,811 to \$48,859,478. The cost of materials, on the other hand, show a decrease of \$420,854. A summary table showing the cost of ten of the principal commodities used in the baking industry for the calendar years 1922 and 1923 and also the increase or decrease per quantity and per cent for each follows. It will be noted that but four of the items show increases in cost laid down at the factory, the remaining six showing decreases, the greatest being for flour, the principal material of the industry, which was 9 1/4 per barrel lower than in 1922. The drop in the price of flour alone would mean a decrease of more than \$2,550,000 in the total cost of materials, whereas the actual decrease as above stated was only one-sixth of that amount.

Commodity prices of materials used in the Baking Industry, 1922 and 1923.

Article	Unit	1922	1923	Increases or Decreases	
				per cwt.	per cent
		\$ ¢	\$ ¢	\$ ¢	p.c.
Flour.....	bb1.	6.56	5.62	- .94	-14.33
Malt.....	lb.	.14	.13	- .01	- 7.14
Yeast.....	lb.	.318	.306	- .012	- 3.77
Salt.....	bb1.	3.36	3.49	+ .13	+ 3.87
Sugar.....	lb.	.080	.098	+ .018	+22.50
Lard.....	lb.	.153	.155	+ .002	+ .13
Butter.....	lb.	.320	.350	+ .030	+ 9.37
Eggs.....	doz.	.330	.312	- .018	- 5.46
Cocoanut.....	lb.	.209	.183	- .026	-12.44
Chocolate.....	lb.	.319	.250	- .059	-18.50

Note: The minus sign (-) denotes decrease and the plus sign (+) an increase



THE BREAD AND OTHER BAKERY PRODUCTS INDUSTRY IN
CANADA 1923.

A comparison of the quantities of materials used in 1923 shows considerable increases in the quantity of materials used over 1922, the principal being flour with 144,341 barrels, malt 577,305 lbs., yeast 606,447 lbs., sugar 464,442 lbs., lard and shortening combined, 912,296 lbs., and condensed milk 376,513 lbs. In rank of production the province of Ontario holds first place with approximately 50 per cent of the total. Quebec is next with over 27 per cent followed by Manitoba and British Columbia each with 5.7 per cent, followed by Alberta with 4.3 per cent, Saskatchewan 3.3 per cent, New Brunswick 2.15 per cent, Nova Scotia 2 per cent and Prince Edward Island one-fifth of one per cent.

PRINCIPAL STATISTICS OF THE BAKING INDUSTRY IN CANADA
BY PROVINCES, 1923.

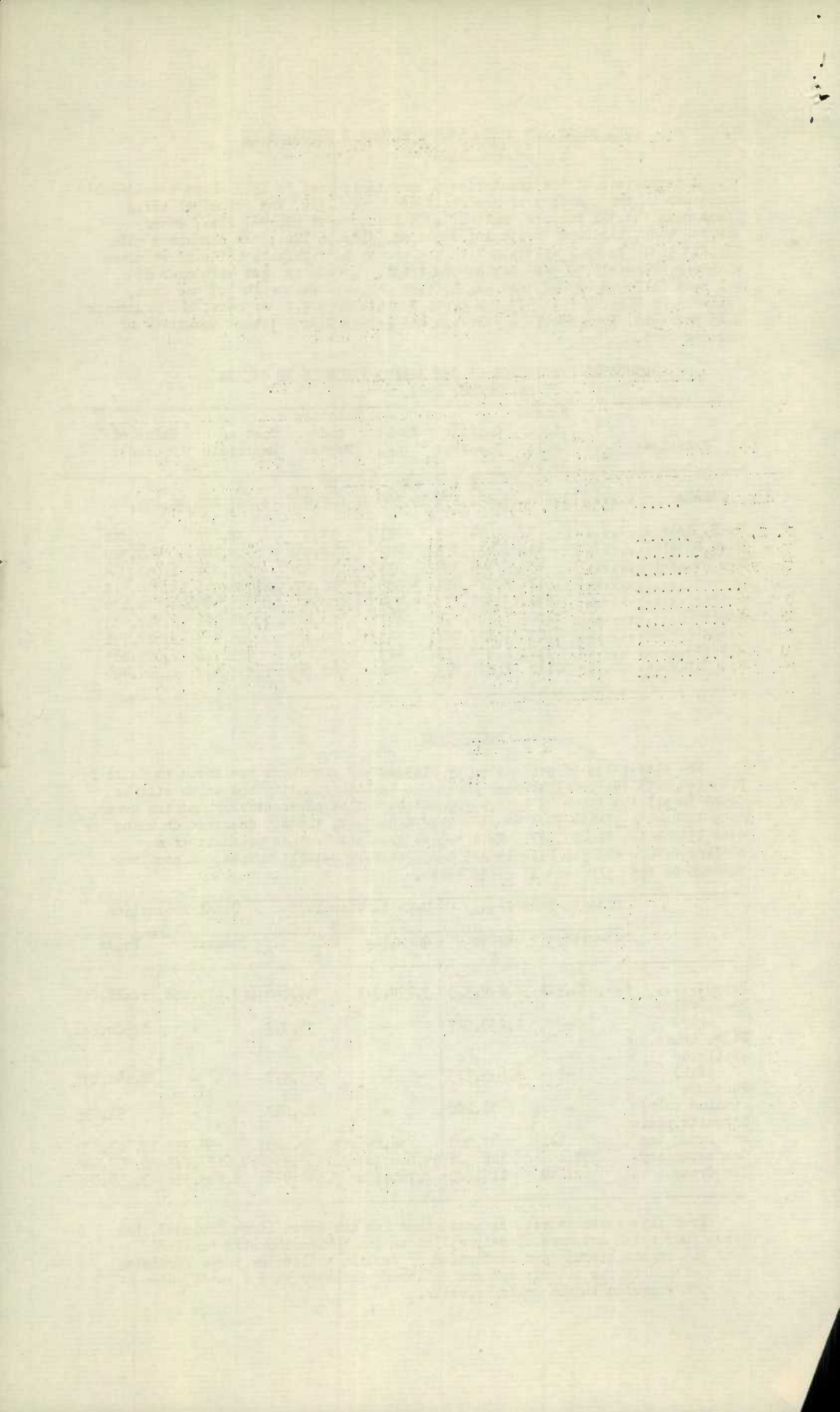
Provinces	Estab-lish-ments Report	Capital Invested	Emplo-ees	Salaries and Wages	Cost of Materials	Value of Products
	No.	\$	No.	\$	\$	\$
CANADA	1,980	28,231,856	10,906	12,249,008	24,287,282	43,859,478
P. E. Island.....	7	34,243	21	13,257	38,628	75,891
Nova Scotia.....	49	437,773	223	212,738	513,144	948,329
New Brunswick.....	49	436,306	213	216,628	558,804	1,053,934
Quebec.....	611	8,814,619	3,086	3,362,999	6,736,946	13,395,518
Ontario.....	831	13,321,736	5,394	6,080,590	12,181,143	24,100,179
Manitoba.....	102	1,461,891	641	789,422	1,224,915	2,797,479
Saskatchewan.....	103	1,107,222	343	379,607	768,083	1,612,791
Alberta.....	112	1,330,773	473	551,222	922,726	2,085,863
Br. Columbia.....	116	1,287,293	512	642,545	1,337,893	2,789,494

PRODUCTION

The statistics of production by classes and provinces are shown in Table I. Compared with the previous year increases in both quantity and value will be found in all the items of bakery production whilst confectionery and ice cream made in baking plants show considerable decreases, the net increase in value over 1922 being \$1,013,667. This report does not include products of a similar nature made in biscuit and confectionery establishments. A combined summary of such products is given below.

	Made in Bakeries		Made in biscuit factories		Total Production	
	Quantity	Value \$	Quantity	Value \$	Quantity	Value \$
Bread.....	664,076,921	38,879,579	5,798,911	348,646	669,875,832	39,228,225
Buns, (value only)	-	1,830,027	-	76,899	-	1,906,926
Pies, cakes, etc (Value only)	-	6,633,323	-	515,572	-	7,148,895
Puddings (value only)	-	70,288	-	20,807	-	91,095
Biscuits, plain and fancy ton	141	43,908	36,256	13,559,129	36,397	13,603,037
Confectionery	571,496	186,322	94,046,383	26,365,944	94,617,879	26,552,266
Ice Cream	62,840	113,622	2,760,736	3,840,476	2,823,576	3,959,098

From this table it will be noted that for the seven items included, the first four which are more closely allied to the baking industry totalled \$361,924 in the biscuit and confectionery section whilst the three remaining items allied to the biscuit and confectionery industry show a total value of \$342,852 reported in the baking section.



BREAD AND OTHER BAKERY PRODUCTS, 1923
PRODUCTION (continued)

5.

Products	CANADA		P.E. ISLAND		NOVA SCOTIA		NEW BRUNSWICK		QUEBEC	
	Quantity	Value \$	Quantity	Value \$	Quantity	Value \$	Quantity	Value \$	Quantity	Value \$
Bread.....lb.	664,076,921	38,879,579	957,095	62,609	10,335,061	734,793	12,214,967	829,932	213,017,695	11,531,568
Buns.....-	-	1,830,027	-	8,026	-	27,139	-	11,198	-	260,801
Pies, cakes, etc.-	-	6,633,323	-	5,256	-	163,354	-	193,536	-	1,434,828
Puddings.....-	-	70,288	-	-	-	325	-	-	-	17,805
Disscuits, plain & fancy.....ton	141	43,908	-	-	12	3,614	-	-	1	300
Chocolate con- fectionery.....lb.	204,169	82,692	-	-	3,000	1,460	-	-	76,694	32,051
Sugar ".....lb.	367,327	103,630	-	-	144	57	-	-	42,614	14,332
Ice Cream.....gal.	62,840	118,622	-	-	580	1,560	1,350	2,100	18,594	32,226
All other products	-	1,097,409	-	-	-	16,027	-	17,168	-	71,607
TOTAL VALUE.	-	48,859,478	-	75,891	-	948,329	-	1,055,934	-	13,395,516
Products	ONTARIO		MANITOBA		SASKATCHEWAN		ALBERTA		BR. COLUMBIA	
	Quantity	Value \$	Quantity	Value \$	Quantity	Value \$	Quantity	Value \$	Quantity	Value \$
Bread.....lb.	307,032,285	18,180,354	31,142,902	2,330,383	26,609,611	1,341,592	28,710,486	1,747,711	34,056,813	2,120,637
Buns.....-	-	1,154,793	-	131,772	-	61,541	-	83,180	-	91,577
Pies and cakes..-	-	3,663,943	-	302,894	-	163,298	-	198,793	-	507,421
Puddings.....-	-	27,985	-	2,300	-	3,745	-	16,284	-	1,844
Disscuits, plain & fancy.....ton	43	15,615	9	3,068	32	7,135	8	3,832	36	10,344
Chocolate con- fectionery, lb.	69,400	31,612	300	180	18,560	6,858	12,350	3,965	23,865	6,566
Sugar ".....lb.	294,769	80,663	1,100	338	15,000	2,325	-	-	13,700	5,915
Ice Cream.....gal.	20,156	37,357	2,873	5,871	7,415	11,895	5,212	8,631	6,660	18,932
All other products	-	907,857	-	20,673	-	14,402	-	23,467	-	26,208
TOTAL VALUE	-	24,100,179	-	2,797,479	-	1,612,791	-	2,085,863	-	2,789,494

THE BREAD AND OTHER BAKERY PRODUCTS INDUSTRY IN CANADA

1923

CAPITAL INVESTMENT

The capital invested in the industry is shown in Table II by items and provinces for the calendar year 1923. The total investment increased by \$2,680,244 of which fixed capital represented by land, buildings, machinery and tools, contributed \$2,452,004 or 90.7 per cent and working capital comprising materials and supplies on hand, cash trading and operating accounts, etc. \$248,240 or 9.3 per cent. The province of Ontario leads in total capital invested with 47.2 per cent, Quebec being second with 31.2 per cent, followed in order by the Western Provinces with 18.4 per cent and the Maritime Provinces with 3.2 per cent.

TABLE II.- Capital invested in the Baking Industry, by items and provinces, 1923

Provinces	Fixed Capital		Working Capital		Total Capital
	Land, buildings and fixtures	Machinery and tools	Materials & supplies on hand, etc.	Cash, trading and operating accounts	
	\$	\$	\$	\$	
CANADA	14,949,589	7,816,655	2,211,735	3,253,877	28,231,856
P.E. Island	21,300	4,475	5,600	2,868	34,243
Nova Scotia	225,149	103,748	64,756	39,120	432,773
New Brunswick	169,708	130,675	52,544	83,379	436,306
Quebec	4,679,531	2,556,856	620,556	957,676	8,814,619
Ontario	7,177,492	3,733,701	1,068,938	1,341,605	13,321,736
Manitoba	710,357	365,266	99,044	286,724	1,461,891
Saskatchewan	538,642	244,800	98,702	225,078	1,107,222
Alberta	730,199	345,559	75,259	179,756	1,330,773
Br. Columbia †	696,711	326,575	126,336	137,671	1,287,293

† Includes Yukon.

EMPLOYEES, SALARIES AND WAGES

Employment statistics are presented in Tables III and III(a). Table III shows the classification of employees by number, sex and remuneration. The number at employment in all classes increased over 1922 by 451 persons of whom 401 were males and 50 females, whilst salaries and wages increased by \$388,389. There was a decrease in the number of salaried employees of 154 which was counterbalanced by an increase in the number of wage earners of 605.

TABLE III.- Employees by number, class, sex and remuneration, 1923.

Classes of employees	Number of employees		Salaries and Wages \$
	Male No.	Female No.	
Salaried Officers of Corporations.....	172	12	523,446
General superintendents, managers, etc.....	173	8	363,009
Technical experts, accountants, etc.....	60	10	101,291
Clerks, stenographers, salesmen, etc.....	674	290	1,295,176
Employees on wages, (average number).....	8,493	1,014	9,966,086
TOTAL EMPLOYMENT	9,572	1,334	12,249,008

Table III(a) presents the statistics of employees by provinces, sex and remuneration. The average salary of all persons employed in the Dominion in 1923 was \$1,632 and the average wage paid was \$1,048.

TABLE III(a).- Employees, Salaries and Wages, by provinces, 1923.

Provinces	Employees on Salaries			Employees on Wages		
	Male No.	Female No.	Salaries \$	Male No.	Female No.	Wages \$
CANADA	1,079	320	2,282,922	8,493	1,014	9,966,086
P. E. Island	1	1	1,000	15	4	12,257
Nova Scotia	13	13	27,896	167	30	184,840
New Brunswick	11	6	29,938	149	47	186,690
Quebec	467	63	969,947	2,398	159	2,393,052
Ontario	364	175	805,416	4,304	551	5,275,174
Manitoba	107	25	196,057	467	42	593,365
Saskatchewan	24	13	56,242	274	32	328,765
Alberta	43	10	50,333	350	69	460,834
Br. Columbia	19	14	108,036	369	80	538,509

OTHER MANUFACTURE STATISTICS

The working time of operating plants is shown in Table IV by provinces, days in operation, on full or part time and days idle, and hours worked per day and per week, together with averages of each per plant.

Provinces	Num-ber of Operat-ing Plants	Days in Operation			Hours worked		Averages of plants		
		On full time	On part time	Idle	Per Day	Per Week	Days in Oper-ation	Hrs. wor-ked per day	Hrs. worked per week
CANADA	1,980	574,953	9,845	34,942	16,968	101,336	295.35	8.6	51.2
P.E.Island	7	1,851	200	140	59	351	293.00	8.4	50.1
Nova Scotia	49	13,802	200	1,335	435	2,609	285.75	8.9	53.3
New Brunswick	49	13,788	300	1,249	434	2,612	287.51	8.9	53.3
Quebec	511	184,093	977	5,173	5,935	35,463	302.89	9.7	58.0
Ontario	531	239,128	4,889	16,086	7,357	43,929	293.64	8.85	52.9
Manitoba	102	29,123	457	2,346	892	5,316	290.00	8.74	52.1
Saskatchewan	103	27,803	1,371	3,065	915	5,435	283.24	8.88	52.7
Alberta	112	31,893	724	2,439	940	5,621	291.22	8.39	50.2
Br. Columbia	116	33,472	727	2,109	995	5,936	294.73	8.60	51.2

Statistics of employment by months are shown in Table V. Maximum employment was reached in the month of September when 9,729 persons were employed of whom 8,667 were males and 1,062 females. The month of minimum employment was January with a total of 9,138 persons of whom 8,177 were males and 961 females. The average number employed monthly was 8,493 males and 1,014 females.

Months	Male No.	Female No.	Months	Male No.	Female No.
January	8,177	961	July	8,578	1,052
February	8,191	966	August	8,649	1,056
March	8,275	966	September	8,667	1,062
April	8,354	975	October	8,657	1,038
May	8,455	1,001	November	8,670	1,034
June	8,591	1,033	December	8,656	1,023
TOTALS				101,720	12,167
Average monthly number employed throughout the year				8,493	1,014

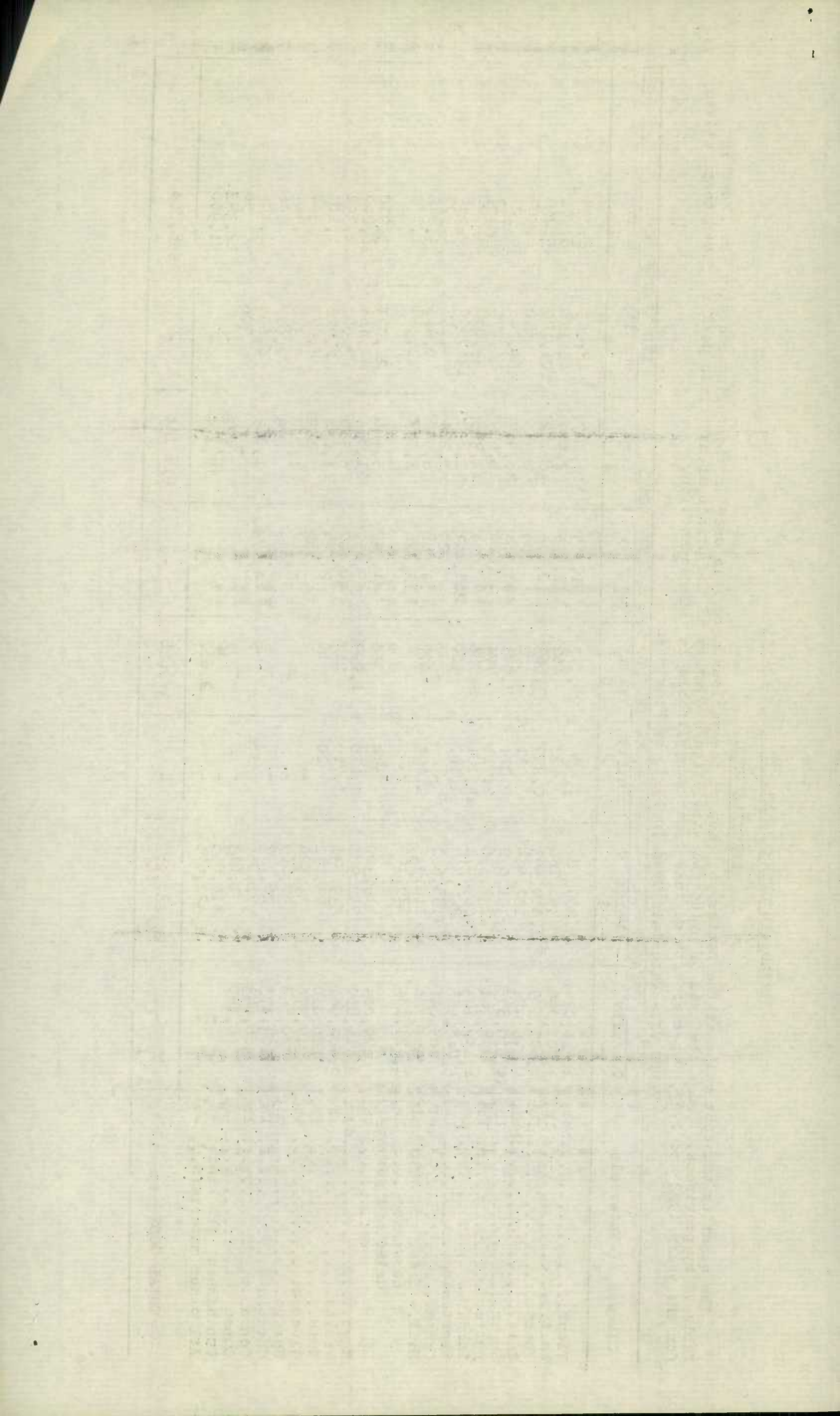
BREAD AND OTHER BAKERY PRODUCTS, 1923

MATERIALS USED

The quantity and cost value at the factory or shop of the various materials used in the baking industry are shown in Table VI by provinces. Under the head of principal statistics a summary of the principal materials used is given comparatively for the years 1922 and 1923, together with certain remarks applicable in this connection.

TABLE VI.- Materials Used in 1923, by Provinces.

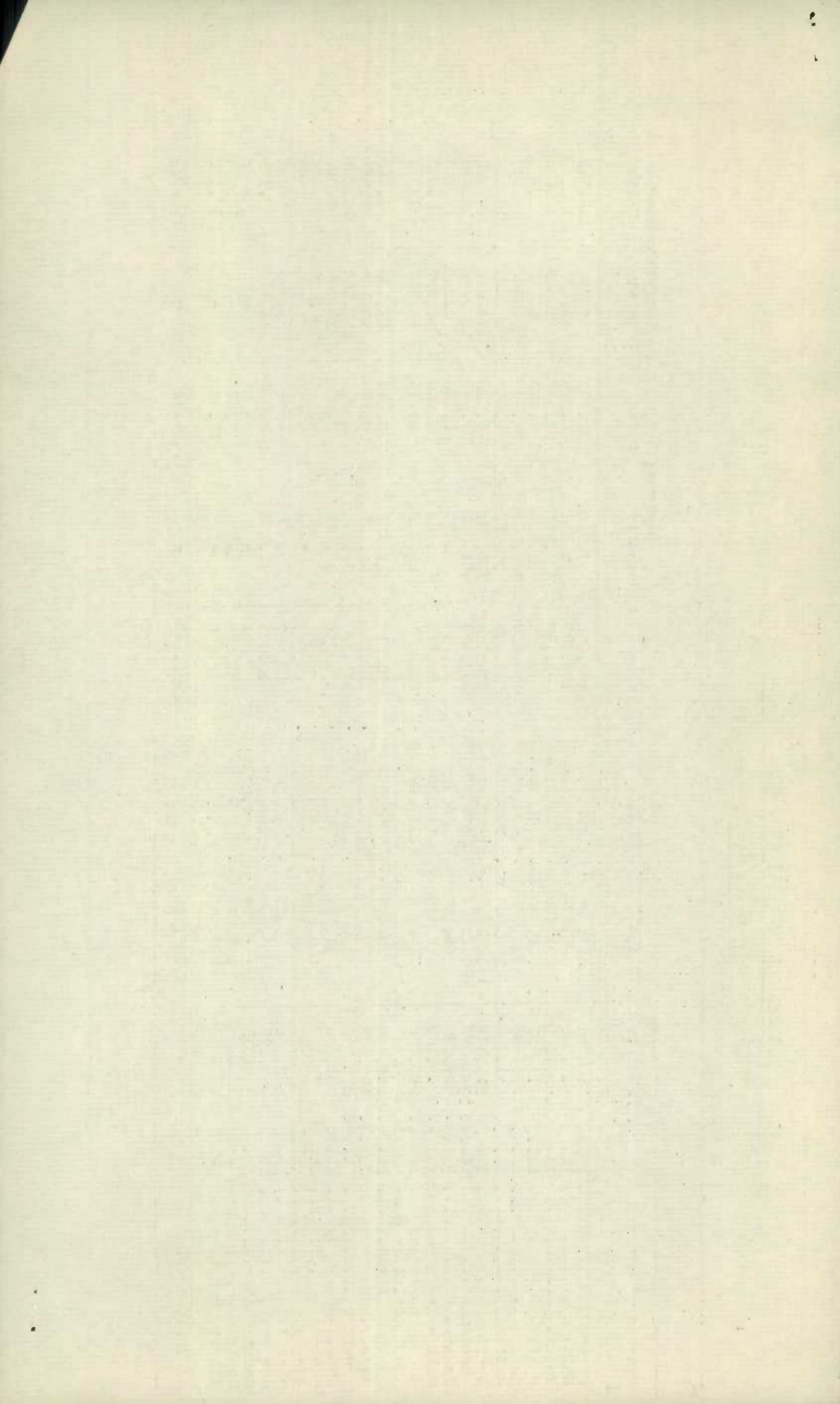
Classes of Materials	CANADA		P. E. ISLAND		NOVA SCOTIA		NEW BRUNSWICK	
	Quantity	Value \$	Quantity	Value \$	Quantity	Value \$	Quantity	Value \$
Flour.....bbl.	2,714,029	15,265,782	3,484	24,570	51,565	316,027	48,065	328,798
Malt.....lb.	3,001,096	391,768	3,422	462	17,495	2,479	46,178	6,501
Yeast.....lb.	4,607,589	1,410,593	10,259	3,663	110,696	36,182	101,190	35,269
Salt.....bbl.	36,451	127,454	51	302	609	2,955	510	2,403
Sugar.....lb.	14,119,805	1,391,072	19,224	2,071	403,514	38,967	369,248	36,507
Butter.....lb.	778,341	272,396	2,711	774	30,649	11,629	16,275	5,113
Lard.....lb.	4,452,195	669,971	13,181	2,086	75,594	12,375	93,068	13,800
Shortening.....lb.	5,748,668	857,867	1,100	160	208,443	31,842	138,594	20,536
Cream.....gal.	105,041	188,602	-	-	729	1,224	1,157	1,909
Milk - fresh and skim.gal.	335,504	110,915	1,403	477	19,588	6,948	9,416	3,832
condensed.....lb.	1,474,184	129,166	-	-	12,328	1,047	11,368	1,751
dried and powder- ed.....lb.	679,064	115,320	375	60	34,337	5,460	21,031	3,920
Eggs.....doz.	2,414,800	752,984	4,270	1,099	59,151	21,865	43,464	16,099
Fruits.....lb.	3,402,961	539,731	1,700	212	34,407	6,396	87,082	12,392
Nuts.....lb.	206,010	75,071	20	10	2,583	1,054	2,728	1,103
Glucose.....lb.	247,576	15,524	-	-	1,782	109	5,677	340
Syrups.....gal.	59,168	37,869	-	-	1,576	1,292	3,388	2,447
Chocolate.....lb.	103,175	26,797	-	-	2,075	618	2,077	546
Cocconut.....lb.	388,883	71,056	15	9	4,173	1,019	6,695	1,189
Cocoa butter.....lb.	8,590	1,613	-	-	-	-	306	56
Containers, all kinds. -	-	414,055	-	12	-	1,522	-	12,393
All other materials... -	-	1,421,676	-	2,661	-	17,134	-	51,900
TOTAL COST	-	24,287,282	-	38,628	-	518,144	-	558,804



BREAD AND OTHER BAKERY PRODUCTS: 1925

MATERIALS USED (Continued)

Classes of materials	QUEBEC		ONTARIO		MANITOBA		SASKATCHEWAN	
	Quantity	Value \$	Quantity	Value \$	Quantity	Value \$	Quantity	Value \$
Flour..... bbl.	815.784	4,817.534	1,295.450	7,298.071	167.522	801.401	87.798	462.781
Malt..... lb.	662.048	88.974	1,782.665	223.059	145.381	20.319	90.017	15.605
Yeast..... lb.	1,050.200	352.488	2,354.519	690.180	298.257	82.372	117.383	43.005
Salt..... bbl.	11.851	30.723	16.598	54.007	1.806	7.780	1.141	5.535
Sugar..... lb.	2,719.594	260.030	7,894.251	780.539	782.084	72.639	384.563	40.921
Butter..... lb.	191.336	73.587	252.003	84.299	34.373	9.547	57.194	17.866
Lard..... lb.	901.179	124.919	2,277.816	338.424	32.381	6.038	173.647	29.805
Shortening..... lb.	726.090	112.856	3,675.408	539.553	604.302	87.821	120.986	19.592
Cream..... gal.	27.230	52.190	56.489	95.849	3,479	5,855	5.014	7,727
Milk - fresh and skim	63.183	19.479	148.398	51.715	8,109	2,686	14,997	5,475
condensed..... lb.	200.768	18.729	1,177.306	100.435	52.669	4,816	12.567	1,354
dried or pow- dered..... lb.	76.410	13.407	384.523	65.510	17,255	3,044	43,136	6,750
Eggs..... doz.	493.607	158.099	1,330.353	416.765	85.920	23,153	73,188	19,860
Fruits..... lb.	376.556	63.896	2,082.226	331.236	214.388	34,283	110,152	19,053
Nuts..... lb.	31.802	11.724	100,990	36,449	10,961	3,568	16,045	6,094
Glucose..... lb.	71.583	5.819	127,134	6,551	60	6	5,900	388
Syrups..... gal.	11.471	8.420	26,063	13,177	5,220	3,474	1,119	1,159
Chocolate..... lb.	53.666	8.495	43,783	10,957	1,905	722	5,698	1,386
Cocconut..... lb.	87.295	14.555	228,817	41,824	11,495	2,882	11,110	2,135
Cocoa butter..... lb.	315	98	5,013	861	-	-	-	-
Containers, all kinds, -	-	143,878	-	191,272	-	14,678	-	13,014
All other materials, -	-	377,041	-	800,410	-	37,821	-	50,482
TOTAL COST.	-	6,736,946	-	12,181,145	-	1,224,915	-	768,083



8. THE BREAD AND OTHER BAKERY PRODUCTS INDUSTRY IN CANADA 1923.

MATERIALS USED (continued)

Classes of Materials	ALBERTA		BR. COLUMBIA	
	Quantity	Cost Value	Quantity	Cost Value
		\$		\$
Flour.....Bbl.	105,007	468,628	139,356	727,972
Malt.....lb.	113,575	16,444	140,315	19,927
Yeast.....lb.	231,370	84,617	333,715	102,817
Salt.....bbl.	1,872	7,271	2,211	6,375
Sugar.....lb.	649,131	73,457	918,196	85,941
Butter.....lb.	66,979	22,339	126,821	47,242
Lard.....lb.	297,515	48,194	587,814	94,330
Shortening.....lb.	168,975	26,977	104,772	18,530
Cream.....gal.	3,661	7,113	7,252	16,725
Milk - Fresh and skim.....gal.	44,597	10,427	25,813	9,876
Condensed.....lb.	660	113	6,518	921
Dried and powdered.....lb.	78,506	12,920	23,491	4,249
Eggs.....doz.	86,438	25,192	239,309	70,852
Fruits.....lb.	136,569	22,704	359,881	49,559
Nuts.....lb.	19,572	7,001	22,200	8,068
Glucose.....lb.	21,330	1,295	14,110	1,016
Syrups.....gal.	3,761	3,136	6,570	4,764
Chocolate.....lb.	4,500	1,423	9,456	2,641
Cocoanuts.....lb.	12,722	2,751	26,576	4,701
Cocoa butter.....lb.	10	3	2,946	595
Containers, all kinds (value only)	-	25,109	-	12,177
All other materials (value only)	-	35,612	-	48,615
TOTAL COST	-	922,726	-	1,337,893

FUEL CONSUMPTION

The quantity and cost value at the factory of all fuel consumed in the industry during the year is shown by classes in Table VII. Coal and its derivatives represented approximately 66 per cent of the total cost of fuel with wood in second place with almost 26 per cent, the other remaining fuels representing 8 per cent.

TABLE VII.- Fuel consumed by classes, 1923

Classes of fuel	Unit	Quantity	Cost Value
Bituminous coal.....	short ton	15,887	156,109
Anthracite coal.....	"	15,524	247,627
Lignite coal.....	"	2,869	28,725
Coke.....	"	30,682	391,584
Gasoline.....	gallons	109,444	33,869
Fuel oils.....	"	91,572	10,299
Wood.....	Cord	65,242	354,568
Gas, artificial and natural.....	M.c.ft.	196,704	134,498
All other not specified (value only).	-	-	8,062
TOTAL COST OF FUEL USED	-	-	1,370,441

The first part of the document
 discusses the general principles
 of the system and its
 objectives. It outlines the
 scope of the project and
 the roles of the various
 participants. The second
 part provides a detailed
 description of the system's
 architecture and the
 implementation process.

The final section of the
 document discusses the
 future work and the
 conclusions drawn from
 the project. It also
 includes a list of
 references and an
 appendix.

POWER STATISTICS

The classes of power employed in the industry are shown in Table VIII by the number of units in each class and their total horse power according to manufacturers' rating. Eighty-two per cent of the power employed was of electric origin. Internal combustion engines supplied nearly 15 per cent, the remaining three per cent being steam engines.

The number of boilers installed is separately reported in the table but form no part of the power installation.

TABLE VIII.- Power Installation by classes, 1923.

Classes of power	Number of Units	Total horse-power according to manufacturers' rating
Steam engines and turbines.....	13	183
Gas engines.....	69	290
Oil and gasoline engines.....	248	913
Electric motors operated by owned power	346	1,557
" " " " purchased power.	1,253	5,169
TOTAL POWER INSTALLATION	1,929	8,112
Boilers Installed	42	1,472

MISCELLANEOUS EXPENSES

The total cost of the items included under the head of miscellaneous expenses or "overhead" comprising rents, taxes, insurance, advertising and travelling expenses, repairs to buildings and machinery, postal, telegraph, telephone charges, office supplies, etc. amounted to \$5,606,341 which was an increase over 1922 of \$395,209.

IMPORTS, EXPORTS AND CONSUMPTION

The trade returns do not permit of individual statistics of the products of the baking industry, the quantities of which in any case would be almost negligible.

The per capita consumption of bakers' bread for the calendar year 1923 based on an estimated population of 9,082,840 amounted to 73.1 lbs. What the per capita consumption of "home made" bread amounted to is difficult to determine as no statistical information is available, on which an estimate might be based.

STATISTICS CANADA LIBRARY
BIBLIOTHÈQUE STATISTIQUE CANADA



1010712285