

32-205 C.1

C A N A D A

DOMINION BUREAU OF STATISTICS

CENSUS OF INDUSTRY

REPORT

on the

BREWING INDUSTRY

in

CANADA

1923

STATISTICS STATISTIQUE
CANADA CANADA
AUG 16 2010
LIBRARY
BIBLIOTHÈQUE

+++

Published by Authority of the Hon. Thos. A. Low. M. P.,
Minister of Trade and Commerce.

+++

OTTAWA

1925

55-002
C.1

LIBRARY OF THE
BIOLOGICAL SCIENCES

UNIVERSITY OF CALIFORNIA

LIBRARY

DOMINION BUREAU OF STATISTICS
 CENSUS OF INDUSTRY
 OTTAWA, CANADA

Dominion Statistician: R. H. Coats, B.A., F.S.S. (Hon) F.R.S.C.
 Chief, Census of Industry: J. C. Macpherson

THE BREWING INDUSTRY IN CANADA 1923

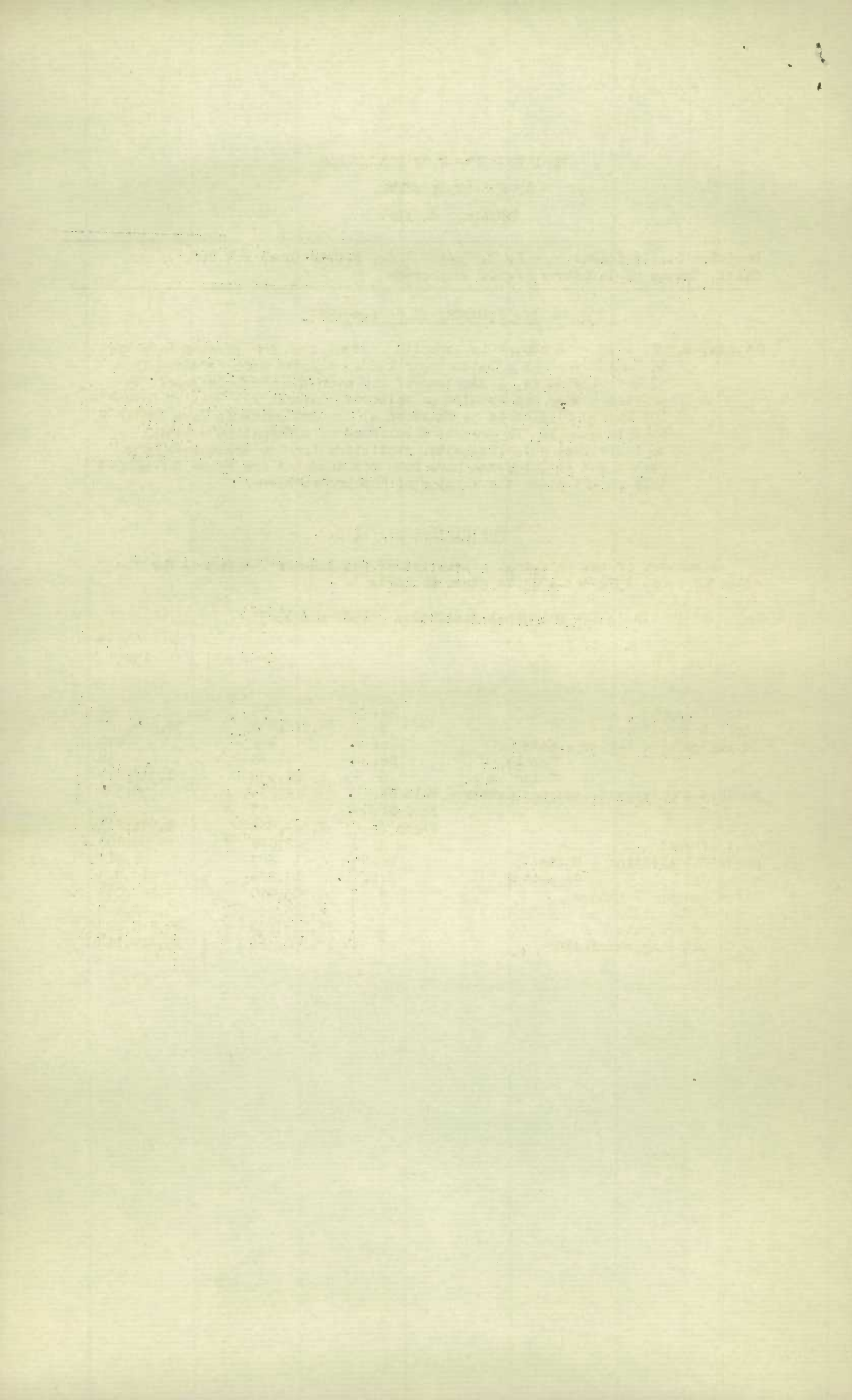
Ottawa, March, 1925.- A report is herewith presented on the Brewing Industry in Canada for the calendar year 1923. Reports were received from 52 establishments, a decrease of one over the previous year. By provinces they are located as follows:- Ontario 19; British Columbia 10; Quebec 9; Alberta 5; Manitoba 4; New Brunswick 2; Nova Scotia 2; Saskatchewan 1. To prevent disclosure of information relating to individual establishments, statistics for New Brunswick, Nova Scotia and Saskatchewan have been combined and are shown throughout this report under the heading of "Other Provinces."

PRINCIPAL STATISTICS.

A summary of the principal statistics of the industry, compared for the calendar years 1922 and 1923 is given in Table I.

Table I.- Principal Statistics - 1922 and 1923

		1922	1923
Establishments	No.	53	52
Capital Investment	\$	34,738,432	38,384,708
Employees on Salaries - Male	No.	472	479
Female	No.	68	58
Salaries	\$	1,328,536	1,336,677
Employees on wages - average number - Male	No.	2,284	2,530
Fem.	No.	33	33
Wages	\$	2,574,884	2,971,873
Cost of Fuel	\$	582,070	550,200
Power Installation - Units	No.	883	1,019
Capacity	H.P.	13,278	13,985
Miscellaneous Expenses	\$	7,705,470	9,284,035
Cost of Materials	\$	8,125,364	9,846,130
Value of Products	\$	25,875,730	29,260,243
Value added by manufacture	\$	17,750,366	19,414,113



THE BREWING INDUSTRY IN CANADA 1923

PRODUCTION

The quantity and value of the principal products of the industry is given by provinces in Table II. for the calendar year 1923. The total value of production rose from \$25,875,730 in 1922 to \$29,260,243 in 1923, an increase of \$3,384,513.

Table II.- Production by Provinces - 1923

Principal Products	CANADA		ONTARIO		BR. COLUMBIA		QUEBEC	
	Quantity	Value	Quantity	Value	Quantity	Value	Quantity	Value
Beer, ale, stout, etc. in barrels (full strength) gal.	12,483,585	6,280,820	1,941,460	1,424,815	252,194	132,258	9,414,391	4,136,615
Beer, ale, stout, etc. in bottles (full strength) gal.	21,224,317	18,392,991	1,773,412	2,258,514	1,064,830	1,370,994	15,771,362	11,738,221
Beer, ale, stout, etc. " "(2½%)	4,236,673	3,279,828	3,508,572	2,403,300	-	-	-	-
" " " "in barrels (2½%)	1,255,140	537,006	1,059,296	428,802	-	-	-	-
Malt Flour lb.	2,588	388	2,588	388	-	-	-	-
Grains sold, wet and dry ton	48,447	227,377	7,978	30,617	1,655	7,260	34,468	171,793
Aerated Waters	-	471,564	-	395,471	-	9,604	-	-
All Other Products	-	70,469	-	8,922	-	5,206	-	-
TOTAL	-	29,260,243	-	6,950,829	-	1,525,322	-	16,046,539

Principal Products	ALBERTA		MANITOBA		OTHER PROVINCES*	
	Quantity	Value	Quantity	Value	Quantity	Value
Beer, ale, stout, etc. in barrels (full strength) gal.	377,930	292,977	280,991	200,911	216,619	93,244
" " " " " bottles (" ")	1,078,228	1,124,054	1,067,924	1,175,025	468,541	726,183
" " " " " " (2½%)	602,174	731,911	53,597	58,738	72,330	85,679
" " " " " barrels (")	195,844	108,204	-	-	-	-
Malt Flour lb.	-	-	-	-	-	-
Grains sold - wet and dry ton	2,580	5,328	950	8,578	816	3,891
Aerated Waters	-	66,489	-	-	-	-
All Other Products	-	-	-	50,686	-	5,655
TOTAL	-	2,328,263	-	1,493,938	-	914,652

* Includes:- New Brunswick 2, Nova Scotia 2, Saskatchewan 1.

CAPITAL INVESTMENT

The amount of capital employed in the industry during the calendar year 1923 is shown by provinces, in Table III by (a) Fixed capital which comprises the value of land, buildings, fixtures, machinery and tools, and (b) Working capital which consists of the value of materials on hand, stocks in process, cash, trading and operating accounts and bills receivable. The total capital rose from \$34,788,432 in 1922 to \$38,384,708 in 1923, an increase of \$3,596,276. To this increase fixed capital contributed \$1,928,615 whilst the expansion in working capital accounted for \$1,607,661.

Table III.- Capital Employed - 1923

Provinces	FIXED CAPITAL			Total Capital
	Land, buildings and fixtures	Machinery and tools	Total	
	\$	\$	\$	
CANADA	17,594,648	8,575,384	26,170,032	
Ontario	4,057,441	2,308,730	6,366,171	
British Columbia	1,431,801	392,136	1,823,937	
Quebec	8,576,560	4,495,611	13,072,171	
Alberta	2,571,889	661,968	3,233,857	
Manitoba	471,717	372,308	844,025	
Other Provinces	485,240	344,631	829,871	
Provinces	WORKING CAPITAL			Total Capital
	Materials on Hand, stocks in process	Cash, trading and operating accounts	Total	
	\$	\$	\$	
CANADA	5,842,394	6,365,722	12,214,676	38,384,708
Ontario	1,509,437	2,160,080	3,669,517	10,035,688
British Columbia	207,741	329,631	537,372	2,361,309
Quebec	3,405,355	2,782,863	6,194,198	19,266,369
Alberta	361,022	742,469	1,103,551	4,337,403
Manitoba	205,368	214,490	419,856	1,263,881
Other Provinces	159,933	130,249	290,182	1,120,053

EMPLOYEES, SALARIES AND WAGES

The total number of persons employed in the industry is given in Table IV for the calendar year 1923 by (a) classes of employment, (b) sex and (c) salary and wage payments. The total employees rose from 2,857 with a payroll of \$3,903,240 in 1922 to 3,100 in 1923 whose total earnings were \$4,308,550 being an increase of 243 persons involving an additional expenditure of \$405,310 on account of salaries and wages during the two year period.

Table IV.- Employees, Salaries and Wages - 1923

Classes of Employment	Male	Female	Salaries and Wages
	No.	No.	
Salaried Officers of corporations	52	3	325,201
General Superintendents, managers	75	-	301,694
Technical experts, chemists, accountants, etc.	82	-	216,769
Clerks, stenographers, salesmen, etc.	270	55	493,013
Employees on wages (average number)	2,530	33	2,971,873
TOTAL	3,009	91	4,308,550

THE BREWING INDUSTRY IN CANADA 1923

OTHER EMPLOYMENT STATISTICS

The number of days the breweries were in operation during the calendar year 1923 together with the number of hours per day or shift and per week, normally worked by wage earners is shown in Table V(a). The total number of wage earners employed throughout the year is shown by sex and by months in Table V(b). It will be seen that the maximum number of persons, viz. 2,901, were employed in the month of August whilst the minimum number was reached in January with 2,250.

Table V(a) - Days in Operation and Hours Worked - 1923

Establishments in Operation	52	
	Total	Average
Days in operation on full time	14,305	275.1
" " " " part time	719	13.8
" " " " idle	784	15.1
Hours worked by wage earners per day or shift	466	8.9
per week	2,693	51.8

Table V(b) - Wage Earners by Months - 1923

Months	Male No.	Female No.	Months	Male No.	Female No.
January	2,223	27	July	2,835	40
February	2,244	27	August	2,859	42
March	2,242	29	September	2,705	31
April	2,356	33	October	2,565	30
May	2,589	34	November	2,523	28
June	2,640	42	December	2,583	29
			Total	30,364	392
			Average number employed during the year	2,530	33

THE BREWING INDUSTRY IN CANADA 1923

MATERIALS USED

5.

The quantity and value of the various materials used in the industry will be found by provinces for the calendar year 1923 in Table VI. The total cost of all materials for the year 1922 was \$8,125,364, whilst for the following year the amount reported was \$9,846,130, an increase of \$1,720,766. Although there was an increase in the value of most of the principal materials, four items show a decrease, viz., hops, anhydrous ammonia, carbonic acid gas and calcium chloride.

Table VI. - Materials Used by Provinces - 1923.

Materials Used	CANADA		ONTARIO		BR. COLUMBIA		QUEBEC	
	Quantity	Value	Quantity	Value	Quantity	Value	Quantity	Value
Barley for malting	Bush., 162,490	120,746	-	-	-	-	162,490	120,746
Canadian malt (including duty)	" 1,965,792	3,733,627	320,398	526,427	66,993	177,720	1,328,519	2,590,111
Foreign malt	" 434,423	894,626	159,368	384,147	3,477	7,114	203,058	464,671
Hops	Lb. 2,035,514	591,632	327,527	101,606	66,490	29,085	1,537,165	428,315
Water Purchased	1,000 gals. 834,710	122,765	248,518	22,460	67,992	8,545	403,641	74,601
Anhydrous ammonia	Lb. 60,711	25,130	14,251	5,783	4,690	2,068	32,057	12,739
Carbonic acid gas	Lb. 662,302	50,165	52,260	5,728	1,395	318	557,256	36,793
Calcium Chloride	" 78,740	2,140	25,594	687	20,156	448	22,951	623
Common salt	" 158,346	2,002	26,218	459	4,150	170	123,034	1,259
Cooperage (barrels all sizes)	-	217,318	-	39,556	-	48,934	-	33,896
Cases	-	522,356	-	262,217	-	-	-	205,620
Bottles purchased	-	2,480,438	-	740,149	-	400,977	-	761,902
Labels	-	154,307	-	26,311	-	15,057	-	79,596
All Other Materials	-	878,878	-	158,217	-	136,536	-	345,354
TOTAL	-	9,846,130	-	2,275,747	-	826,972	-	5,156,235

THE BREWING INDUSTRY IN CANADA 1923.

MATERIALS USED (Continued.)

Materials Used		ALBERTA		MANITOBA		OTHER PROVINCES	
		Quantity	Value	Quantity	Value	Quantity	Value
Barley for Malting	Bush.	-	-	-	-	-	-
Canadian Malt (Including duty)	"	94,445	233,218	104,044	146,325	51,393	107,123
Foreign Malt	"	66,303	35,600	2,127	2,770	90	324
Hops	Lb.	-	-	54,489	17,130	50,083	15,426
Water Purchased	1,000 gals.	53,170	5,968	40,599	7,511	20,990	3,680
Anhydrous ammonia	Lb.	4,789	2,398	3,010	1,317	1,914	825
Carbonic acid gas	"	25,026	3,722	15,450	2,129	10,915	1,475
Calcium Chloride	"	6,039	282	4,000	100	-	-
Common salt	"	900	18	1,760	35	2,284	61
Cooperage (barrels all sizes)	-	-	60,532	-	16,047	-	18,353
Cases	-	-	45,511	-	6,908	-	2,100
Bottles purchased	-	-	401,503	-	61,392	-	114,508
Labels	-	-	25,897	-	4,788	-	2,658
All Other Materials	-	-	60,605	-	155,907	-	22,259
TOTAL	-	-	875,954	-	422,359	-	288,865

FUEL CONSUMPTION

The quantity and value of the various kinds of fuel used in the industry during the calendar year 1923 is given in table VII. The total cost of all fuel used fell from \$582,070 in 1922 to \$550,200, in 1923, a decrease of \$31,870. Coal of various kinds is the principal item of fuel with a total cost value of \$532,465 or 96.7% of the value of the total fuel consumption.

Table VII.- Fuel Consumption - 1923

Kinds of Fuel	Unit of Measure	Quantity	Value
Bituminous coal	ton	57,624	428,868
Anthracite Coal	"	10,845	82,371
Lignite coal	"	3,288	21,226
Gasoline	gal.	37,453	10,690
Wood	cord	1,259	5,912
Gas	m.c.ft.	1,492	809
Other Fuel	-	-	324
TOTAL		-	550,200

POWER INSTALLATION

The power employed in the industry during the calendar year 1923 is given in Table VIII by (a) classes of power, (b) number of units in each class and (c) horse-power capacity according to manufacturers' rating. In 1922 there were 883 units generating 13,278 horse power. In 1923 the total rose to 1,019 units supplying 13,985 horse power, an increase of 136 units and 707 horse power.

Table VIII.- Power Installation - 1923.

Classes of Power	Number of units	Horse Power Capacity
Steam engines and turbines	121	6,157
Gas engines	1	4
Hydraulic turbines or water wheels	1	1
Electric motors operated by power generated at the plant	179	1,220
" " " by purchased power	717	6,603
TOTAL	1,019	13,985

MISCELLANEOUS EXPENSES

The overhead charges or miscellaneous ^{expenses} incurred in the industry during 1923 amounted to \$9,284,035 which was \$1,578,565 more than the total reported for the previous year. Miscellaneous expenses include:- rents, taxes of all kinds, insurance premiums, telephone charges, advertising and travelling expenses and repairs to buildings and machinery.

IMPORTS AND EXPORTS

The quantity and value of ale, beer, porter, etc. imported into and exported from Canada during the calendar year 1923 is shown in Table IX.

Table IX(a) - Imports by Countries - 1923

Articles Imported	United Kingdom		United States		Other Countries	
	Quan.	Val.	Quan.	Val.	Quan.	Val.
Ale, beer, porter, etc. in bottles	gals. 90,540	205,725	400	959	1,258	1,423
Beverages containing not more than 2½% proof spirits	" 180	120	-	-	8	23
TOTAL	90,720	205,845	400	959	1,266	1,446

Table IX(b) - Exports by Countries - 1923

Articles Exported	United Kingdom		United States		Other Countries	
	Quantity	Value	Quantity	Value	Quantity	Value
Ale, beer, porter	gal. 7	\$ 6	2,627,305	4,597,799	324,473	403,010

STATISTICS CANADA LIBRARY
BIBLIOTHÈQUE STATISTIQUE CANADA



1010712549