

32-205 CR

OCT 15 1930  
FRONT OF THE  
LIBRARY

CANADA  
DEPARTMENT OF TRADE AND COMMERCE  
DOMINION BUREAU OF STATISTICS  
CENSUS OF INDUSTRY

REPORT  
on the  
BREWING INDUSTRY

STATISTICS STATISTIQUE  
CANADA CANADA

MAY 16 2010

LIBRARY  
BIBLIOTHEQUE

IN

CANADA  
1929

Published by Authority of the Hon. H. H. Stevens, M.P.,  
Minister of Trade and Commerce

...

OTTAWA

1930

25-502

DEPARTMENT OF HEALTH AND HUMAN SERVICES  
CENTERS FOR DISEASE CONTROL AND PREVENTION

STATE OF CALIFORNIA  
DEPARTMENT OF HEALTH SERVICES

1975

LIBRARY  
BELLINGHAM

1975

California Department of Health Services  
Division of Field and Community

11

## DEPARTMENT OF TRADE AND COMMERCE

## DOMINION BUREAU OF STATISTICS

## CENSUS OF INDUSTRY

OTTAWA - CANADA

Dominion Statistician:  
Chief, Census of Industry

R.H. Coats, B.A., F.S.S., (Hon.), F.R.S.C.  
J.C. Macpherson.

THE BREWING INDUSTRY IN CANADA, 1929.

Ottawa, July, 1930.-

The annual report of the Brewing Industry in Canada for the calendar year 1929 is presented herewith. The number of plants operating during the year was 78. The location of the plants by provinces was as follows:- Ontario 36, British Columbia 10, Quebec 7, Manitoba 8, Alberta 5, Saskatchewan 8, New Brunswick 2 and Nova Scotia 2. The statistics for the last named are combined under the head of Maritime Provinces throughout the tables of this report to prevent disclosure of information relating to individual plants.

PRINCIPAL STATISTICS

A comparative summary of the principal statistics of the industry in the Dominion is presented in Table 1 for the calendar years 1928 and 1929. A column showing the increase or decrease in the various items of the table has been added.

Table 1. Principal Statistics Compared 1928 and 1929.

Principal Statistics	Unit	1928	1929	Increase over 1928
Establishments reporting	No.	78	78	-
Capital invested	\$	67,148,686	70,390,147	+3,241,461
Employees on salaries-				
Males	No.	835	768	- 67
Females	No.	118	116	- 2
Salaries	\$	2,295,187	2,384,418	+ 89,231
Employees on wages-				
Males	No.	4,014	3,909	- 105
Females	No.	36	46	+ 10
Wages	\$	4,785,574	4,749,838	- 35,736
Cost of fuel and electricity	\$	825,988	834,475	+ 8,487
Power installed-				
Units	No.	1,626	1,778	+ 152
Capacity	H.P.	38,344	38,026	- 318
Cost of materials	\$	20,737,486	19,135,208	-1,602,278
Gross Value of Products	\$	60,910,398	62,260,921	+1,350,523
Net Value of Products	\$	40,172,912	43,125,713	+2,952,801

MEMORANDUM

TO : DIRECTOR

DATE: [illegible]

MEMORANDUM FOR THE DIRECTOR

Reference is made to the report of the Special Agent in Charge, [illegible], dated [illegible], regarding the activities of [illegible].

It is recommended that [illegible]

[illegible]	[illegible]	[illegible]	[illegible]	[illegible]
[illegible]	[illegible]	[illegible]	[illegible]	[illegible]
[illegible]	[illegible]	[illegible]	[illegible]	[illegible]
[illegible]	[illegible]	[illegible]	[illegible]	[illegible]
[illegible]	[illegible]	[illegible]	[illegible]	[illegible]
[illegible]	[illegible]	[illegible]	[illegible]	[illegible]
[illegible]	[illegible]	[illegible]	[illegible]	[illegible]

THE BREWING INDUSTRY IN CANADA, 1929.

Size of Establishments

In view of the tendency towards concentration in industrial enterprises, a series of tables has been prepared presenting it in a threefold way the size of establishments in the brewing industry measured by (a) capital investment, (b) gross value of production and (c) the number of persons employed, all within certain specified groups or limitations for the calendar years 1928 and 1929. The tables further indicate the movement of capital, production and employment within the industry.

In 1928 the number of establishments reporting was 78 with a total capital investment of \$67,148,686, - a gross value of production of \$60,910,398 and a total employment of 5,003. Nineteen establishments had a capital investment of \$44,237,088 or 65.9 per cent of the total capital investment and an average investment of \$2,433,531 per factory. In gross value of production 16 factories had a total production of \$41,839,696 or 68.7 per cent of the total output, with an average production of \$2,614,981 per establishment. In employment 13 establishments had 2,799 persons on the payroll or 55.9 per cent of the total employment with an average employment of 215.3 per establishment.

In 1929 the number of establishments reporting was 78 with a total capitalization of \$70,390,147, a gross value of production of \$62,260,921 and a total employment of 4,839. Nineteen establishments had a total capital investment of \$46,914,522 or 66.6 per cent of the total capitalization with an average investment of \$2,469,185 per establishment. Fifteen establishments had a gross value of production of \$41,506,207 or 66.6 per cent of the total output, with an average production of \$2,767,081 per establishment. In employment, 11 establishments had 2,437 persons on the payroll, an average of 221.6 persons per establishment and 50.36 per cent of the total employment.

Capital

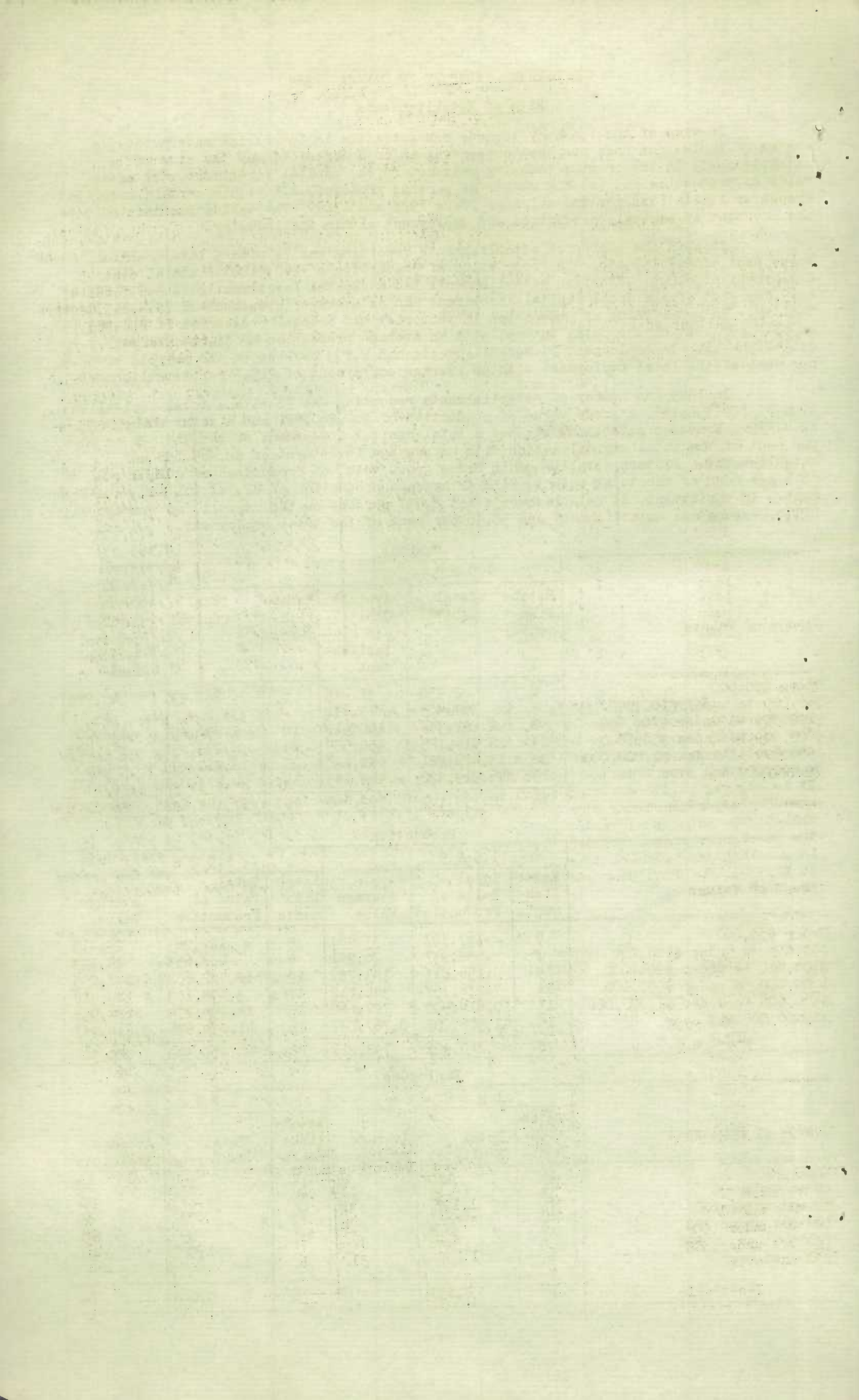
Groups of Values	1929			1928		
	Estab-lish-ments	Total Capital	Average Capital per es-tablish-ment	Estab-lish-ments	Total Capital	Average Capital per es-tablish-ment
Under \$50,000	2	62,950	31,475	6	262,291	43,715)
\$50,000 to under \$100,000	5	368,405	73,681	-	-	- )
\$100,000 to under \$200,000	8	1,207,344	150,918	10	1,480,057	148,005
\$200,000 to under \$500,000	24	8,414,125	350,589	23	8,239,251	358,228
\$500,000 to under \$1,000,000	20	13,422,801	671,140	20	12,929,999	646,500
\$1,000,000 and over	19	46,914,522	2,469,185	19	44,237,088	2,433,531
T o t a l	78	70,390,147	902,438	78	67,148,686	860,881

Production

Groups of Values	1929			1928		
	Estab-lish-ments	Total Value of Production	Average Value	Estab-lish-ments	Total Value of Production	Average Value
Under \$50,000	5	167,307	33,461	5	122,063	24,413
\$50,000 to under \$100,000	7	538,937	76,991	6	468,653	78,109
\$100,000 to under \$200,000	15	2,156,813	143,787	19	2,722,602	143,295
\$200,000 to under \$500,000	21	7,276,757	346,712	17	5,498,109	323,418
\$500,000 to under \$1,000,000	15	10,614,900	707,660	15	10,259,275	683,952
\$1,000,000 and over	15	41,506,207	2,767,081	16	41,839,696	2,614,981
T o t a l	78	62,260,921	798,217	78	60,910,398	780,902

Employees

Groups of Employees	1929			1928		
	Estab-lish-ments	Total Employees	Average Employees	Estab-lish-ments	Total Employees	Average Employees
Under 20	15	170	11	14	139	10
20 to under 50	38	1,198	32	38	1,173	31
50 but under 100	14	1,034	74	13	892	69
100 but under 200	6	878	146	7	992	141
(200 but under 500	5	1,559	312	6	1,807	301
(500 and over	-	-	-	-	-	-
T o t a l	78	4,839	62	78	5,003	64



THE BREWING INDUSTRY IN CANADA, 1929.

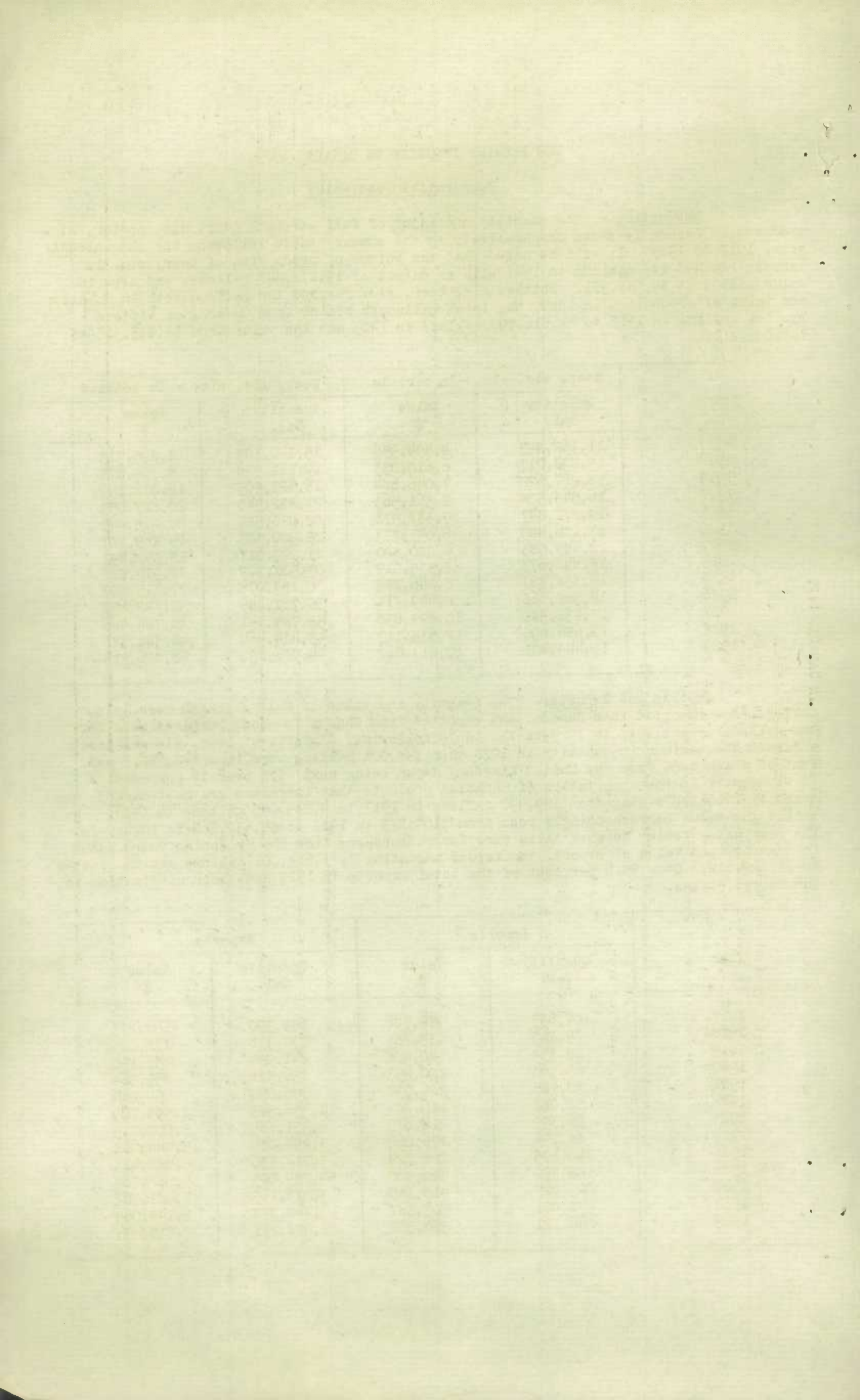
Comparative Statistics

Production.- The quantity and value of full strength beer, ale, porter, etc. produced in Canada is shown comparatively in the summary table following for the calendar years 1917 to 1929. It will be noted that the volume of production of beer, etc. in barrels reached its maximum in 1921 with an output of 19,272,847 gallons, and also in value stated at \$9,537,971. Bottled ale, beer, etc. reached the maximum both in quantity and value of production in 1929, the total gallonage rising from upwards of fifteen million gallons in 1917 to 44,016,892 gallons in 1929 and the value from \$8,895,315 to \$48,026,214.

Year	Beer, ale, etc. -In barrels		Beer, ale, etc. - In bottles	
	Quantity Gal.	Value \$	Quantity Gal.	Value \$
1917	11,162,445	4,594,956	15,740,107	8,895,315
1918	15,898,217	6,610,033	12,111,976	8,304,678
1919	18,267,628	7,046,684	16,622,905	12,076,153
1920	16,543,528	8,361,563	21,822,540	20,227,059
1921	19,272,847	9,337,971	22,028,580	20,275,495
1922	13,106,429	6,057,733	22,500,303	19,169,207
1923	12,483,585	6,280,820	21,224,317	18,392,491
1924	15,842,673	7,935,019	23,581,379	21,914,222
1925	14,338,793	8,246,285	30,153,075	27,115,207
1926	15,568,668	8,449,714	30,781,445	32,342,698
1927	15,231,340	10,899,636	38,744,841	38,764,966
1928	17,686,655	12,635,117	43,424,464	46,341,782
1929	17,445,401	12,213,862	44,016,892	48,026,214

Imports and Exports.- The quantity and value of full strength beer, ale, porter, etc. imported into Canada, and exported from Canada is shown comparatively for the calendar years 1917 to 1929 in the table following. Imports of beer, ale and porter attained the maximum in quantity in 1928 when 248,001 gallons were imported, 82.5 per cent of which came from the United Kingdom, Japan being next with over 16 per cent. It is however in the exportation of Canadian products that increases are most marked, the quantity exported rising from 189,990 gallons in 1917 to 4,239,085 gallons in 1926, whilst the value correspondingly rose from \$104,273 in 1917 to \$5,552,769 in 1926. In the year under review however there were large decreases from the preceding years both in quantity and value of export, the former amounting to 1,664,001 gallons and the latter to \$2,329,610. Over 98.6 per cent of the total exports in 1929 had their destination in the United States.

Year	Imports		Exports	
	Quantity Gal.	Value \$	Quantity Gal.	Value \$
1917	107,635	88,726	189,990	104,273
1918	35,242	33,785	230,336	178,023
1919	29,354	42,428	241,994	157,150
1920	65,364	120,453	756,381	859,364
1921	52,785	124,038	398,090	654,034
1922	52,088	116,288	1,356,523	2,593,765
1923	96,399	214,675	2,951,785	5,000,815
1924	88,156	176,266	3,194,080	5,044,011
1925	140,495	288,724	3,714,736	5,088,414
1926	148,398	320,460	4,239,085	5,552,769
1927	223,025	410,150	3,916,163	5,481,707
1928	248,001	507,887	3,742,292	5,148,065
1929	246,721	520,802	2,078,291	2,818,455





THE BREWING INDUSTRY IN CANADA, 1929.

Production Statistics

The quantity and the selling value at the brewery of the principal products of this industry are shown for Canada and the provinces in Table 2. Full strength beer, ale, etc., in barrels decreased from the 1928 production by 241,254 gallons for all Canada, whilst bottled full strength beer, ale, etc. increased by 592,428 gallons. The value of beer, ale, etc., of full strength whether in barrels or bottles increased over 1928 by \$1,263,177. In beer, ale, etc., under full strength (2.5 and 4.4) there was in all Canada a further decrease of 30,399 gallons and of \$21,664 in value. The province of Ontario alone shows a decrease of 16,793 gallons and of \$5,456 in value, whilst the other provinces, except Manitoba, also show decreases.

The average selling price of the bottled full strength product in 1929 was \$1.091 per gallon, and of the draft 70 cents per gallon, whilst that under full strength averaged at \$1.085 per gallon in bottles and 75.5 cents for draft. Of the total quantity produced in 1929, of all strength, the province of Quebec supplied 49.47 per cent, Ontario 24.68 per cent, Alberta 7.94 per cent, Manitoba 7.31 per cent, British Columbia 5.70 per cent, Saskatchewan 4.06 per cent and the Maritime Provinces (New Brunswick and Nova Scotia) .84 per cent.

Table 2.- Production in Breweries for Canada and the Provinces, 1929.

Products	Unit	CANADA		MARITIME PROVINCES		QUEBEC		ONTARIO	
		Quantity	Value \$	Quantity	Value \$	Quantity	Value \$	Quantity	Value \$
Beer, ale, etc. in barrels (full strength)	Gal.	17,445,401	12,213,862	80,372	89,847	7,436,462	3,297,787	3,094,893	3,103,340
Beer, ale, etc. in bottles (full strength)	"	44,016,892	48,026,214	434,362	759,512	23,276,976	18,841,051	11,620,239	15,730,004
Beer, ale, etc. in barrels (under full strength)	"	256,298	193,510	-	-	-	-	256,205	193,443
Beer, ale, etc. in bottles (under full strength)	"	368,579	400,073	4,032	5,747	-	-	350,532	379,353
Malt extract (value only)	-	-	68,724	-	-	-	-	-	68,724
Grains sold, wet or dry (value only)	-	-	364,748	-	4,698	-	233,459	-	60,519
Aerated waters (value only)	-	-	952,218	-	-	-	-	-	558,623
All other products (value only)	-	-	41,572	-	-	-	29,402	-	6,737
TOTAL VALUE	-	-	62,260,921	-	859,804	-	22,401,699	-	20,100,743
			MANITOBA		SASKATCHEWAN		ALBERTA		BRITISH COLUMBIA
Beer, ale, etc. in barrels (full strength)	Gal.	1,891,853	1,682,577	-	-	3,078,365	2,598,581	1,863,456	1,441,730
Beer, ale, etc. in bottles (full strength)	"	2,634,542	3,645,019	2,520,524	3,336,226	1,851,092	3,095,174	1,679,157	2,619,228
Beer, ale, etc. in barrels (under full strength)	"	93	67	-	-	-	-	-	-
Beer, ale, etc. in bottles (under full strength)	"	13,313	13,959	-	-	702	1,014	-	-
Malt extract (value only)	-	-	-	-	-	-	-	-	-
Grains sold, wet or dry (value only)	-	-	23,191	-	4,471	-	21,408	-	17,002
Aerated waters (value only)	-	-	277,940	-	3,427	-	82,936	-	29,292
All other products (value only)	-	-	1,118	-	-	-	-	-	4,315
TOTAL VALUE	-	-	5,643,871	-	3,344,124	-	5,799,113	-	4,111,567



THE BREWING INDUSTRY IN CANADA, 1929.

Capital Investment

The amount of capital invested in the brewing industry in 1929 was \$70,390,147, of which fixed capital, represented by land, buildings, machinery and tools totalled \$48,975,708 and working capital, including materials, stocks and supplies on hand, cash, trading and operating accounts, etc. \$21,414,439. The increase in capital over the preceding year was \$3,241,461, of which \$3,800,458 was fixed capital, whilst working capital on the other hand, showed a decrease amounting to \$558,997.

The per cent distribution of total capital investment by provinces according to rank was as follows:- Ontario 33.03, Quebec 31.52, Alberta 11.42, British Columbia 8.83, Manitoba 8.46, Saskatchewan 5.10, and the Maritime Provinces 1.64.

Table 3.- Capital Invested in the Brewing Industry by Provinces, 1929.

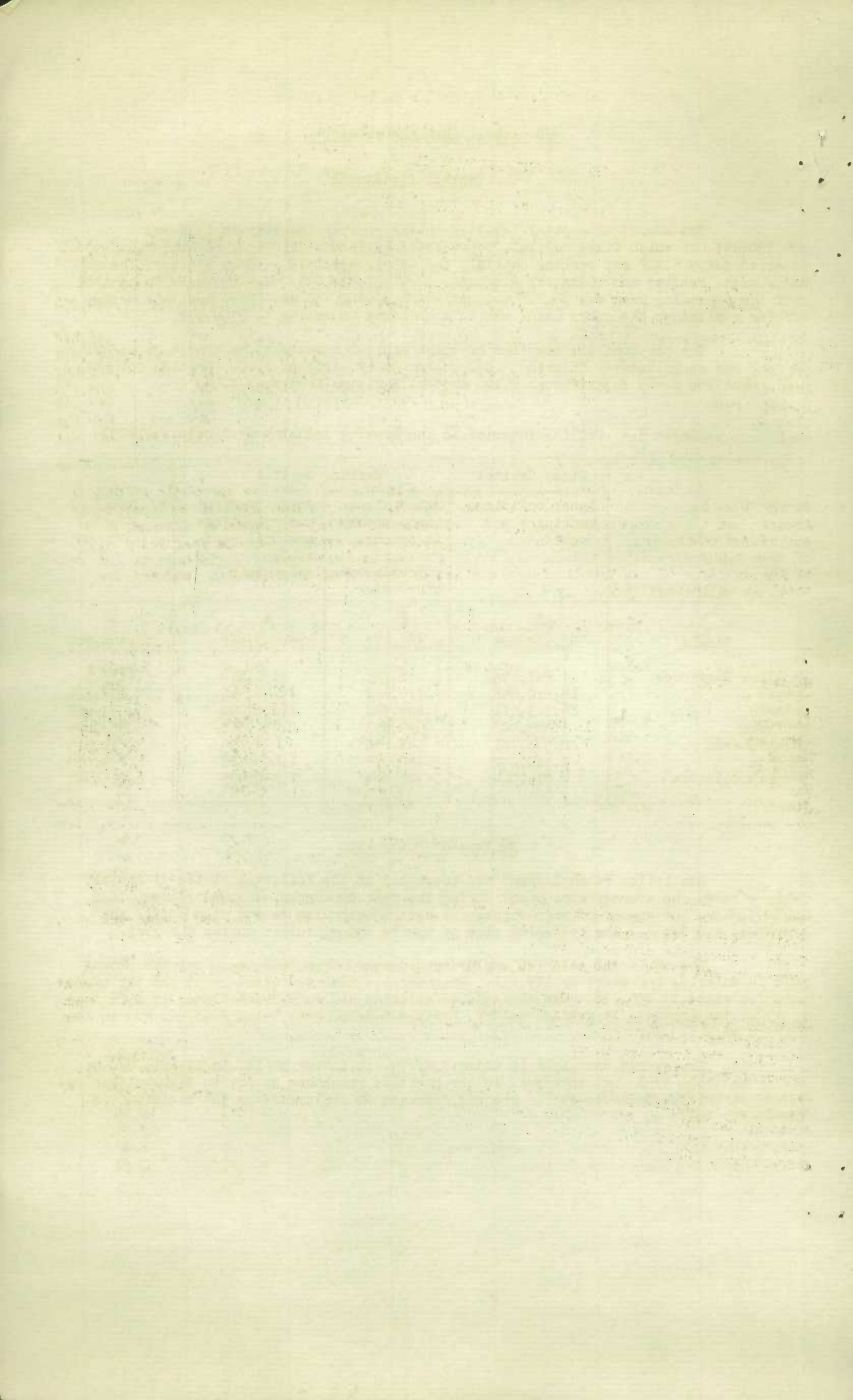
Provinces	Fixed Capital	Working Capital		Total Capital
	Land, buildings, machinery and tools	Materials on hand, Stocks in process, Fuel and miscellaneous supplies	Cash, trading and operating accounts, and bills receivable	
	\$	\$	\$	\$
CANADA	48,975,708	8,861,477	12,552,962	70,390,147
Maritime Provinces	887,594	76,299	191,979	1,155,872
Quebec	15,810,448	2,719,403	3,657,469	22,187,320
Ontario	16,723,011	3,804,349	2,726,098	23,253,458
Manitoba	3,305,908	595,853	2,051,888	5,953,649
Saskatchewan	2,553,781	541,138	494,396	3,589,315
Alberta	5,680,902	752,971	1,600,717	8,034,590
British Columbia	4,014,064	371,464	1,830,415	6,215,943

Employment Statistics

Statistics of employment are presented in the following series of tables. Table 4 shows the average employment during the year by number, sex and remuneration, Table 5 shows the number of wage-earners by months according to sex with totals and averages, and Table 6 the operating time of plants and employees during the year.

The number of salaried employees decreased from 1928 by 69 but the amount paid in salaries increased by \$89,231. Wage-earners also decreased by 95 and the amount paid for wages by \$35,736. The averages of salaries and wages were higher in 1929 than in 1928, the increase in average salary, irrespective of sex, being \$288.92, and in the average wage \$19.35.

Employment decreased in Ontario by 74, in Quebec by 71, in Alberta by 49, and in Manitoba by 8, but increased in the Maritime Provinces by 16, in Saskatchewan by 15 and in British Columbia by 7. The net decrease in employment in the Dominion was, therefore, 164.



THE BREWING INDUSTRY IN CANADA, 1929.

Employment Statistics(Cont'd.)

Table 4.- Employees by number, sex and remuneration, 1929.

Provinces	Employees on Salaries			Employees on Wages			Totals		
	Male	Female	Salaries	Male	Female	Wages	Male	Female	Salaries and Wages
	No.	No.	\$	No.	No.	\$	No.	No.	\$
CANADA	768	116	2,384,418	3,909	46	4,749,838	4,677	162	7,134,256
Maritime Provinces	19	-	65,923	78	5	70,519	97	5	136,442
Quebec	175	22	530,463	1,394	16	1,642,509	1,569	38	2,172,972
Ontario	352	74	1,003,143	1,361	9	1,565,909	1,713	83	2,569,052
Manitoba	88	9	312,294	456	14	592,835	544	23	905,129
Saskatchewan	47	3	131,412	180	1	186,024	227	4	317,436
Alberta	47	5	171,839	215	1	350,341	262	6	522,180
British Columbia	40	3	169,344	225	-	341,701	265	3	511,045

The number of wage-earners employed in the industry for the whole of Canada during 1929 is shown by months and sex in Table 5. The month of highest employment was August when there were on the payroll 4,399 persons, whilst the month of minimum employment was February with 3,464 on the payroll, the average for the year being 3,955 of whom 3,909 were males and 46 were females. The average monthly employment is the sum of the averages of individual plants divided by the number in operation, and not the total at employment divided by 12.

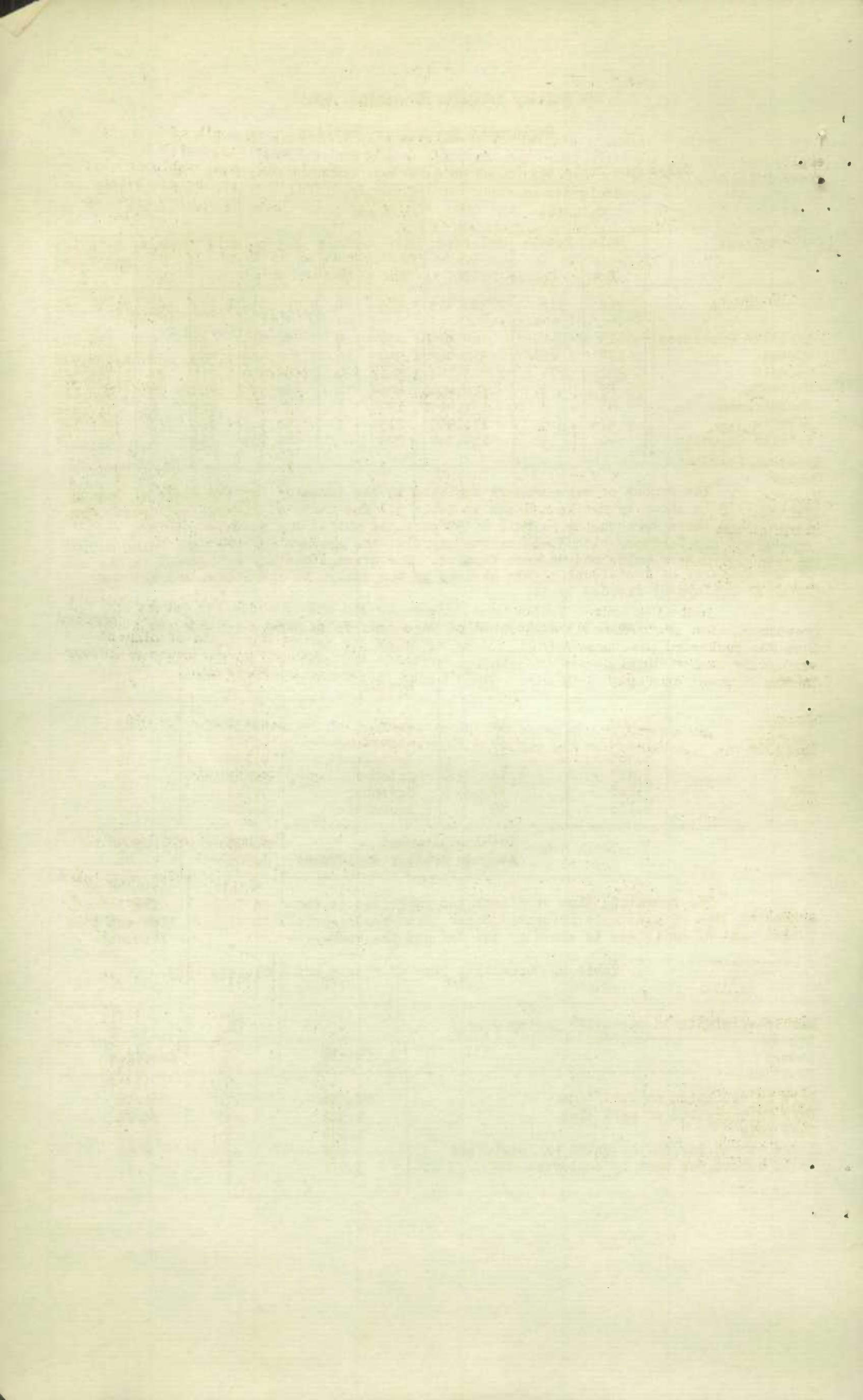
Table 5.- Employment of Wage-earners by Months and Sex, 1929.

Months	Males No.	Females No.	Months	Males No.	Females No.
January	3,600	36	July	4,333	48
February	3,430	34	August	4,347	52
March	3,465	34	September	4,138	48
April	3,823	35	October	3,821	49
May	3,888	37	November	3,742	47
June	4,138	39	December	3,684	47
Total employment				46,409	505
Average monthly employment				3,909	46

The operating time of plants and employees is shown in Table 6. The operating time of plants is presented under three heads:- full time, part time and idle, whilst that of employees is shown by the day and the week.

Table 6. Operating Time of Plants and Employees, 1929.

Number of plants in operation during year -		78	
	Totals	Averages	
Days in operation on full time	20,386	261.36	
Days in operation on part time	1,927	24.70	
Days idle	1,399	17.94	
Hours worked per day or shift by employees	688	8.82	
Hours worked per week by employees	3,971	50.91	



THE BREWING INDUSTRY IN CANADA, 1929.

Table 7 presents statistics of wage-earning employees in month of highest employment working specified hours per day, for Canada and the provinces, with percentages of persons working at each specified daily rate. From the following table it will be noted that the 9 and 10 hour day prevailed for the Dominion, the percentages being 31.03 and 43.49. The next in order was the 8 hour group with 21.02 per cent whilst the group working more than 10 hours aggregated 4.46 per cent.

Table 7.- Hours worked per day by wage-earners in month of highest employment for Canada and the provinces, 1929.

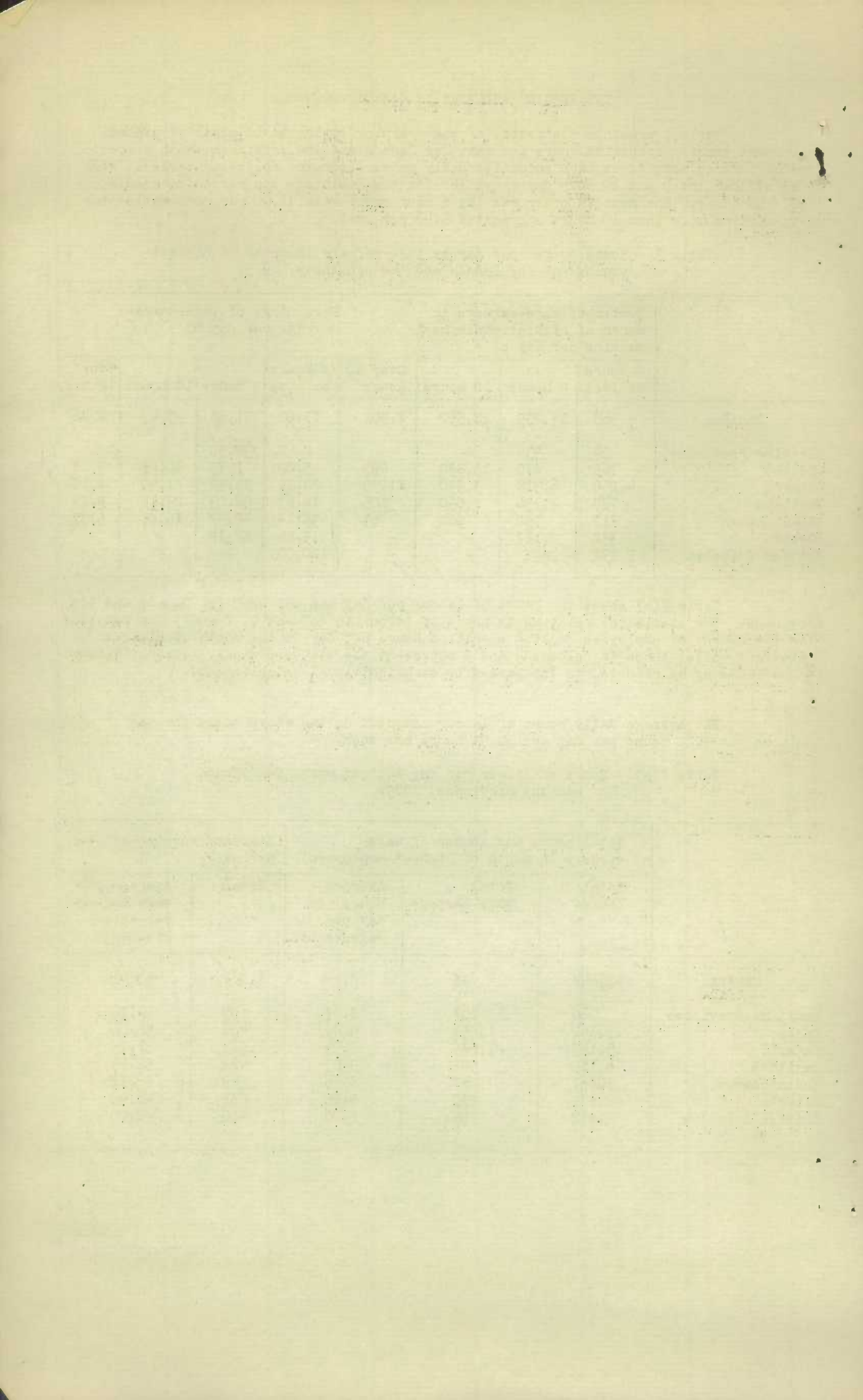
	Number of wage-earners in month of highest employment working per day of -				Percentage of wage-earners working per day of -			
	8 hours or less	9 hours	10 hours	Over 10 hours	8 hours or less	9 hours	10 hours	Over 10 hrs.
CANADA	8,968	13,239	18,550	1,901	21.02	31.03	43.49	4.46
Maritime Provinces.	24	936	-	-	2.50	97.50	-	-
Quebec	768	270	13,830	494	5.00	1.75	90.03	3.22
Ontario	4,256	6,318	3,330	1,239	28.11	41.72	21.99	8.18
Manitoba	784	2,736	1,090	105	16.63	58.03	23.12	2.22
Saskatchewan	712	792	300	63	38.14	42.42	16.07	3.37
Alberta	352	2,187	-	-	13.86	86.14	-	-
British Columbia	2,072	-	-	-	100.00	-	-	-

Table 7(a) shows the hours of labour per day and per week for Canada and the provinces. The statistics relating to hours of labour in columns 1, 2 and 3 are compiled from the number of employees working specified hours per day in the month of highest employment whilst those in columns 4 and 5 represent the standard weekly hours of labour in the industry as reported to the Bureau by each individual establishment.

The average daily hours of labour computed on the above basis for the Dominion was 9.22 hours per day and 50.91 hours per week.

Table 7(a).- Hours of Labour per day and per week, for Canada and the provinces, 1929.

	Total hours and number of wage-earners in month of highest employment			Standard working hours per week	
	Total hours	Total wage-earners	Average hours per day per wage-earner	Total	Average per wage-earner, per establishment
CANADA	42,658	4,628	9.22	3,971	50.91
Maritime Provinces	960	107	8.97	199	49.75
Quebec	15,362	1,556	9.87	406	58.00
Ontario	15,143	1,685	8.99	1,863	51.75
Manitoba	4,715	521	9.05	422	52.75
Saskatchewan	1,867	213	8.76	369	46.12
Alberta	2,539	287	8.85	232	46.40
British Columbia	2,072	259	8.00	480	48.00





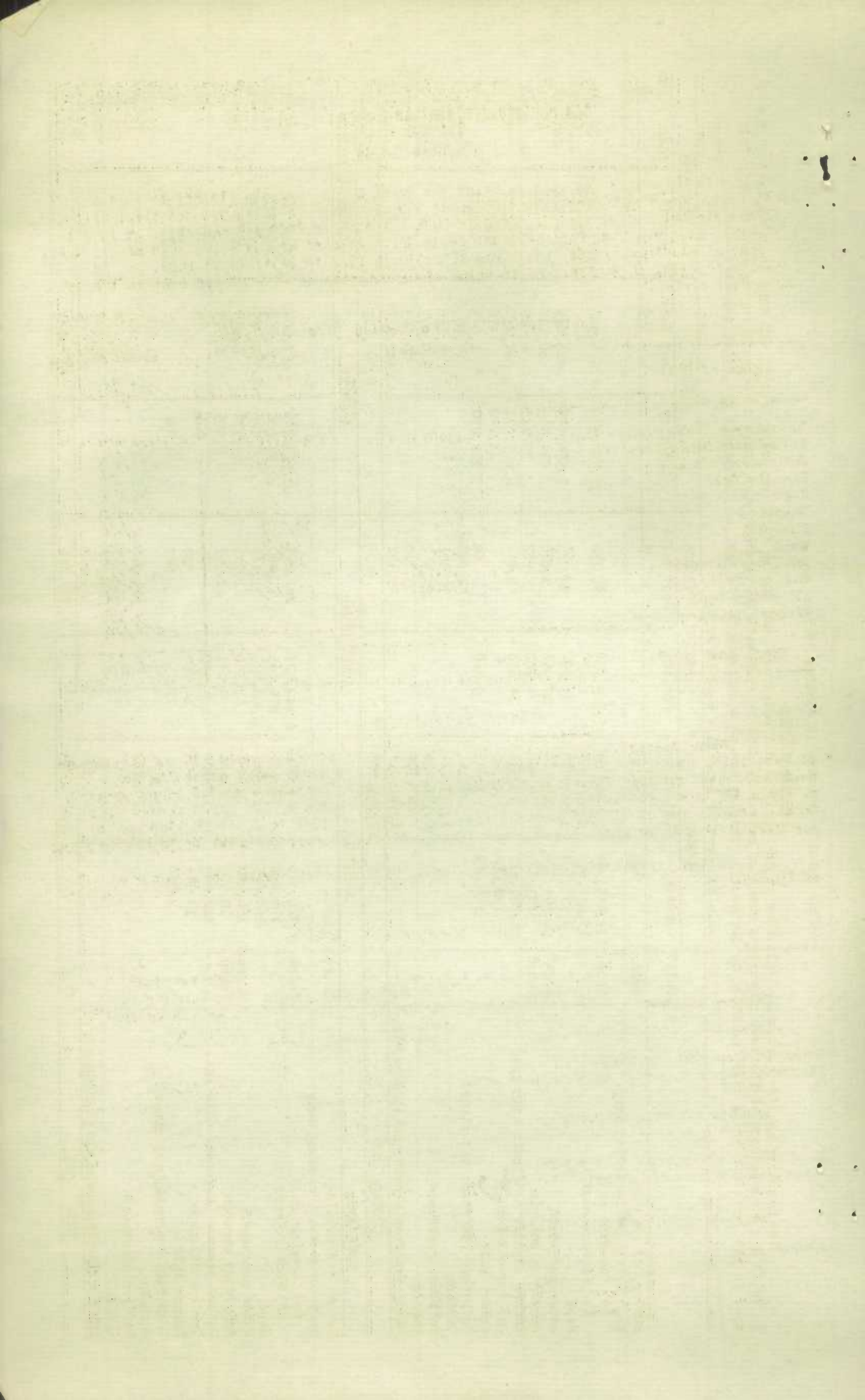
THE BREWING INDUSTRY IN CANADA, 1929.

Materials Used

The quantity and the cost value delivered at the works of all materials used during 1929 including freight and duty is shown by provinces in Table 8. A comparison of the cost of various items of materials used in 1928 with the present year shows a decrease in the cost of materials used in the Dominion during 1929 amounting to \$1,602,273, chiefly due to a decrease in the cost of containers and other supplies.

Table 8. Cost of Materials used in 1929.

	Unit	CANADA		MARITIME PROVINCES		QUEBEC		ONTARIO	
		Quantity	Cost Value \$	Quantity	Cost Value \$	Quantity	Cost Value \$	Quantity	Cost Value \$
Barley for malting	Bush.	488	1,050	-	-	-	-	488	1,050
Malt purchased including duty:									
(a) Canadian malt	Pound	122,975,279	7,534,306	1,603,189	98,192	71,528,360	4,456,906	18,171,983	1,099,386
(b) Foreign malt	"	25,158,676	1,696,517	-	-	-	-	20,352,542	1,367,246
Hops	"	2,951,564	1,014,577	44,299	13,155	1,594,743	483,879	761,772	280,477
water purchased	M.gal.	1,404,778	206,674	17,996	2,886	434,463	80,177	544,333	66,710
Anhydrous ammonia	Pound	103,929	19,980	4,900	982	33,919	6,089	37,718	6,149
Carbon dioxide (carbonic acid gas)	"	1,187,216	78,931	14,658	1,424	667,091	31,151	348,217	28,500
Calcium chloride	"	128,606	3,120	-	-	22,140	376	49,000	1,117
Common salt	"	311,662	3,025	3,500	64	175,030	1,643	62,512	479
Cooperage (barrels, all sizes)	-	-	329,142	-	4,048	-	37,183	-	212,312
Cartons	-	-	1,113,121	-	12,981	-	218,266	-	520,952
Bottles, purchased	-	-	5,337,422	-	167,952	-	960,293	-	2,343,632
Labels	-	-	283,304	-	3,100	-	80,583	-	109,870
Other supplies(crowns,corks,bungs,etc.)	-	-	1,514,039	-	19,922	-	412,725	-	408,485
TOTAL COST	-	-	19,135,208	-	-	-	6,769,271	-	6,446,365
Materials			MANITOBA		SASKATCHEWAN		ALBERTA		BRITISH COLUMBIA
Barley for malting	Bush.	-	-	-	-	-	-	-	-
Malt purchased including duty:									
(a) Canadian malt	Pound	9,926,318	549,081	4,147,527	242,545	10,575,140	657,009	7,022,762	431,187
(b) Foreign malt	"	706,834	57,713	874,845	51,400	1,759,000	120,858	1,465,455	99,300
Hops	"	164,655	72,520	66,235	32,247	165,526	74,785	154,334	57,514
Water purchased	M.gal.	156,212	24,787	81,146	11,741	65,974	6,935	104,654	13,438
Anhydrous ammonia	Pound	10,903	2,844	4,811	1,355	7,405	1,573	4,273	988
Carbon dioxide (carbonic acid gas)	"	122,800	12,059	23,350	3,740	550	96	10,550	1,961
Calcium chloride	"	18,945	542	14,750	528	-	-	23,771	557
Common salt	"	5,870	81	45,150	542	2,050	31	17,550	185
Cooperage (barrels, all sizes)	-	-	14,836	-	-	-	21,104	-	39,659
Cartons	-	-	120,606	-	123,014	-	93,400	-	23,902
Bottles purchased	-	-	256,032	-	631,569	-	463,430	-	514,514
Labels	-	-	26,079	-	23,278	-	22,164	-	18,230
Other supplies(crowns,corks,bungs,etc.)	-	-	247,788	-	185,282	-	100,105	-	139,732
TOTAL COST	-	-	1,384,968	-	1,307,241	-	1,561,490	-	1,341,167



THE BREWING INDUSTRY IN CANADA, 1929.

Fuel and Electricity

The quantity and cost value at the works of the various classes of fuel and of electricity consumed by the industry during 1929 is shown in Table 9. The total cost of fuel and electricity purchased, which in 1928 amounted to \$825,988 had risen in 1929 to \$834,475. Coal was the principal fuel being 92.7 per cent of the total cost of all fuel. The cost of electricity used rose from \$198,350 in 1927 to \$231,272 in 1928, and to \$238,641 in 1929, or an increase in value of consumption of over 20 per cent in the three year period.

Table 9.- Fuel Consumption by Classes, 1929.

Kind of fuel	Unit	Quantity	Cost Value \$
Bituminous Coal, Canadian	Ton	60,044	325,567
Bituminous Coal, Imported	Ton	22,822	135,163
Anthracite Coal	Ton	3,901	25,970
Lignite Coal	Ton	16,090	65,736
Coke	Ton	13	150
Gasoline	Gal.	32,176	8,400
Fuel Oil	Gal.	64,000	4,092
Wood	Cord	1,052	4,285
Gas, manufactured	M.C.ft.	583	632
Gas, natural	M.C.ft.	92,485	20,440
All other fuel			5,399
Electricity purchased			238,641
<b>Total Cost of Fuel and Electricity</b>	-		<b>834,475</b>

Power Installation

Power installed in the brewing industry is presented in Table 10 by (a) classes of power, (b) number of units in each class, and (c) the horse power according to manufacturers' rating. Power for manufacturing purposes decreased by 318 horse power, of which 192 was electric, whilst steam power also decreased by 126 horse power. The total installation of electric motors rose from 1,563 in 1927 to 1,753 in 1928 and to 1,920 in 1929 and the rated horse power from 14,070 to 32,811, but fell to 32,619 in 1929.

Boiler installation totalled 151 units with a rated boiler horse power capacity of 19,628.

Table 10.- Power Installation, 1929.

Classes of Power	Number of Units	Horse power according to manufacturers' rating
Steam engines and turbines	111	6,922
Electric motors operated by purchased power	1,667	31,104
<b>Total manufacturing power</b>	<b>1,778</b>	<b>38,026</b>
Electric motors operated by power generated by establishment	253	1,515
<b>Total electric motor installation</b>	<b>1,920</b>	<b>32,619</b>

MEMORANDUM

DATE	TO	FROM	SUBJECT
1942	Mr. Tolson	Mr. [Name]	[Subject]
1942	Mr. Tolson	Mr. [Name]	[Subject]
1942	Mr. Tolson	Mr. [Name]	[Subject]
1942	Mr. Tolson	Mr. [Name]	[Subject]
1942	Mr. Tolson	Mr. [Name]	[Subject]
1942	Mr. Tolson	Mr. [Name]	[Subject]
1942	Mr. Tolson	Mr. [Name]	[Subject]
1942	Mr. Tolson	Mr. [Name]	[Subject]
1942	Mr. Tolson	Mr. [Name]	[Subject]

THE BREWING INDUSTRY IN CANADA, 1929.

IMPORTS, EXPORTS AND CONSUMPTION

Imports.- Table 11 shows the quantity and value of beer, ale, porter, etc. imported into Canada during the calendar year 1929 by countries. There was a decrease in the quantity of malt liquors imported in 1929 of 14 gallons but an increase in value of \$13,424, over 82 per cent of which came from the United Kingdom.

Table 11.- Imports of Beer, Ale, Porter, etc., 1929.

Articles Imported by Countries	Unit	Quantity	Value \$
Ale, Beer and Porter (bottled and in casks) Total	Gal.	247,987	521,311
From United Kingdom	"	205,374	426,006
United States	"	944	1,843
Japan	"	40,342	92,888
Other Countries	"	1,327	574

Exports.- The quantity and value of Ale, Beer and Porter, the produce of Canada, exported is shown by countries in Table 12 for the calendar year 1929. Exports show a decrease of 1,664,001 gallons in quantity and in value of \$2,329,610. Over 98.6 per cent of the quantity exported had its destination in the United States.

Table 12.- Exports of Beer, Ale and Porter, 1929.

Articles Exported by Countries	Unit	Quantity	Value \$
Ale, Beer, Porter			
United States	Gal.	2,049,987	2,786,591
Bermuda	"	8,734	7,956
British Honduras	"	3,372	3,520
Barbados	"	-	-
Jamaica	"	831	1,097
Trinidad	"	54	69
Other Br. West Indies	"	6,659	8,456
China	"	2,565	2,850
Hong Kong	"	551	612
Newfoundland	"	2,475	3,606
St. Pierre and Miquelon	"	2,437	3,058
Other Countries	"	626	640
<b>Total value of Exports</b>		<b>2,078,291</b>	<b>2,818,455</b>

Consumption.- The quantity and value of malt liquors available for consumption in Canada during the calendar year 1929, are presented in Table 13. The usual method of computing consumption of any commodity is to add together the production and imports and deduct therefrom the exports. The per capita quantity and value available for consumption based on an estimated population of 9,796,800 in 1929 is also included in the table.

Table 13.- Consumption of Beer, Ale, and Porter, 1929.

	Production	Imports	Exports	Available for Consumption	Per capita Consumption
Ale, Beer, Porter, etc. Gal.	62,087,170	247,987	2,078,291	60,256,866	6.15
\$	60,833,659	521,311	2,818,455	58,536,515	5.97

STATE OF NEW YORK

IN SENATE

JANUARY 15, 1887

REPORT

OF THE

COMMISSIONERS OF THE LAND OFFICE

FOR THE YEAR 1886

ALBANY:

WEDDING AND GLENN, PRINTERS.

1887.

NEW YORK:

WEDDING AND GLENN, PRINTERS.

1887.

ALBANY:

WEDDING AND GLENN, PRINTERS.

1887.

NEW YORK:

WEDDING AND GLENN, PRINTERS.

1887.

ALBANY:

WEDDING AND GLENN, PRINTERS.

1887.

NEW YORK:

WEDDING AND GLENN, PRINTERS.

1887.

ALBANY:

WEDDING AND GLENN, PRINTERS.

1887.

NEW YORK:

WEDDING AND GLENN, PRINTERS.

1887.

THE BREWING INDUSTRY IN CANADA, 1929.

Breweries Operating in 1929.

Maritime Provinces -

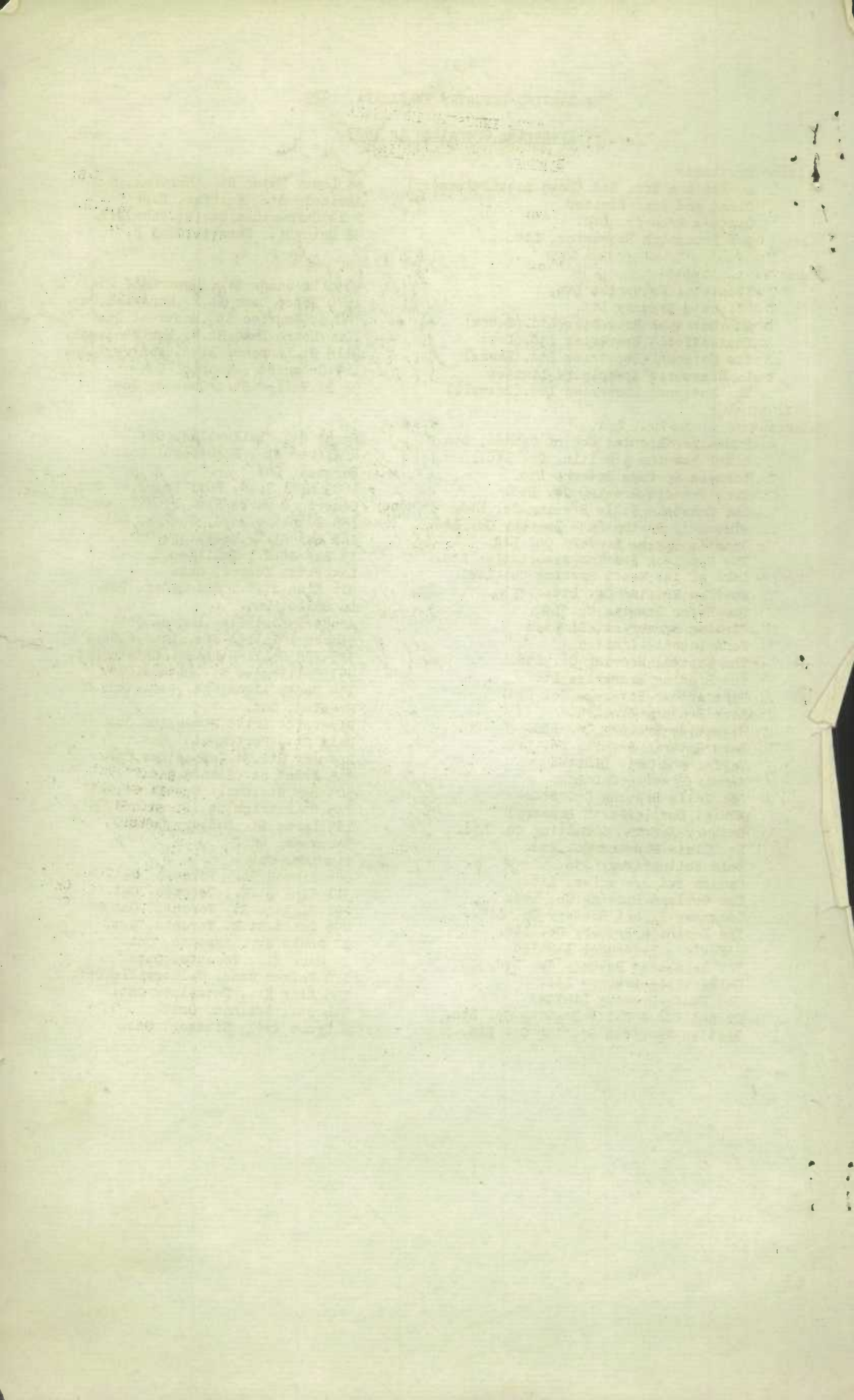
A. Keith & Son, Ltd. (Nova Scotia Brewery)	88 Lower Water St., Halifax, N.S.
Oland and Son, Limited	Agricola St., Halifax, N.S.
Oland's Brewery, Ltd.	2-14 Carmarthen St., St. John, N.B.
New Brunswick Breweries, Ltd.	98 Main St., Fairville, N.B.

Québec -

Frontenac Breweries Ltd.	5930 De Gaspe St., Montreal, Que.
Molson's Brewery Ltd.	1670 Notre Dame St. E., Montreal, Que.
The National Breweries Ltd. (Dawes)	740 St. Maurice St., Montreal, Que.
The National Breweries Ltd. (Dow)	1000 Notre Dame St. W., Montreal, Que.
The National Breweries Ltd. (Ekers)	2115 St. Lawrence Blvd., Montreal, Que.
La Brasserie Champlain, Limitee	164 Crown St., Quebec, Que.
The National Breweries Ltd. (Boswell)	92 St. Valier St., Quebec, Que.

Ontario -

Budweiser Brewing Co. of Canada, Ltd.	Front St., Belleville, Ont.
Bixel Brewing & Malting Co. Ltd.	4 Alfred St., Brantford, Ont.
Formosa Springs Brewery Ltd.	Formosa, Ont.
Fort Francis Brewing Co. Ltd.	1009 Mill Road, Fort Francis, Ont.
The Kakabeka Falls Brewing Co. Ltd.	Cameron & Marks Sts., Ft. William, Ont.
Sleeman's Spring Bank Brewery Co. Ltd.	186 Edinboro Road, Guelph, Ont.
Grant's Spring Brewery Co. Ltd.	167 Bay St. N., Hamilton, Ont.
The Hamilton Brewing Association Ltd.	19 Bay St. N., Hamilton, Ont.
Lake of the Woods Brewing Co. Ltd.	Lakeside, Kenora, Ont.
Huether Brewing Co. Ltd.	476 King St. W., Kitchener, Ont.
The Hofer Brewing Co. Ltd.	La Salle, Ont.
Carling Breweries, Limited	Ann & Talbot Sts., London, Ont.
John Labatt, Limited	Simcoe & Talbot Sts., London, Ont.
The Capital Brewing Co. Ltd.	385-389 Wellington St., Ottawa, Ont.
The Brading Breweries Ltd.	451 Wellington St., Ottawa, Ont.
Port Arthur Beverage Co. Ltd.	154 North Algoma St., Pt. Arthur, Ont.
Rock Brewery Limited	Preston, Ont.
Riverside Brewery Co. Ltd.	Riverside Drive, Riverside, Ont.
Lake Ontario Brewing Co. Ltd.	Main St., Portsmouth, Ont.
Taylor and Bate Limited	Brewery St., St. Catharines, Ont.
Sarnia Brewing Co. Ltd.	335 Front St., Sarnia, Ont.
Soo Falls Brewing Co. Ltd.	503 Bay St., Sault Ste. Marie, Ont.
Daniel Devlin (Perth Brewery)	235 St. Patrick St., Stratford, Ont.
Sudbury Brewing & Malting Co. Ltd.	185 Lorne St., Sudbury, Ont.
St. Clair Brewing Co. Ltd.	Tecumseh, Ont.
Gold Belt Brewery Ltd.	Timmins, Ont.
Canada Bud Breweries, Ltd.	286 Simcoe St., Toronto, Ont.
The Copland Brewing Co. Ltd.	311 King St. E., Toronto, Ont.
Cosgrave Export Brewery Co. Ltd.	291 Niagara St., Toronto, Ont.
The Dominion Brewery Co. Ltd.	496 Queen St. E., Toronto, Ont.
O'Keefe's Beverages Limited	17 Gould St., Toronto, Ont.
The Reinhardt Brewery Co. Ltd.	22 Mark St., Toronto, Ont.
Walkerville Brewery Ltd.	120 Walker Road, Walkerville, Ont.
The Kuntz Brewery Limited	155 King St., Waterloo, Ont.
Cronmiller & White Brewing Co. Ltd.	5th St., Welland, Ont.
British American Brewing Co. Ltd.	2 Bruce Ave., Windsor, Ont.





THE BREWING INDUSTRY IN CANADA, 1929.

Breweries Operating in 1929.

Manitoba -

The Empire Brewing Co. Ltd.	Pacific Ave., Brandon, Man.
Premier Brewing Co. Ltd.	14th St. Brandon, Man.
The Kiewel Brewing Co. Ltd.	664 St. Joseph St., St. Boniface, Man.
The Drewrys Limited	Boyd Ave. E., Winnipeg, Man.
Macpherson Brewing Limited	721 Furby St., Winnipeg, Man.
Pelissier's Limited (Inc. 1927)	Cor. Osborne & Mulvey Sts., Winnipeg, Man.
Arnold W. Riedle	Cor. Talbot & Stadacona Sts., Winnipeg, Man.
Shea's Winnipeg Brewery Ltd.	137 Colony St., Winnipeg, Man.

Saskatchewan -

Souris Breweries, Ltd.	Estevan, Sask.
American Brewing Co. Ltd.	Home & 10th St., Moose Jaw, Sask.
Star Brewing Co. Ltd.	North Battleford, Sask.
Prince Albert Breweries Ltd.	554-17th St. W., Prince Albert, Sask.
Adanac Brewing Co. Limited	Albert St. & 4th Ave., Regina, Sask.
Regina Brewing Co. Ltd.	Dewdney Ave., Regina, Sask.
The Hub City Brewing Co. Ltd.	519 Second Ave. W., Saskatoon, Sask.
The Saskatoon Brewing Co. Ltd.	South of 8th St., Saskatoon, Sask.

Alberta -

Calgary Brewing & Malting Co. Ltd.	East Calgary, Alta.
The Big Horn Brewing Co. Ltd.	Manchester Sub-Division, Calgary, Alta.
New Edmonton Breweries Limited	10449-121st St., Edmonton, Alta.
North West Brewing Co. Ltd.	10542 Saskatchewan Drive, Edmonton, Alta.
Lethbridge Breweries Ltd.	Cor. 1st St. & 2nd Ave., Lethbridge, Alta.

British Columbia -

Cranbrook Brewing Co. Ltd.	Cranbrook, B.C.
The Fernie-Fort Steele Brewing Co. Ltd.	Fernie, B.C.
Kootenay Breweries Ltd.	510 Latimer St., Nelson, B.C.
Westminster Brewery Ltd.	210 Brunette St., New Westminster, B.C.
Princeton Brewing Co. Ltd.	Princeton, B.C.
The Enterprise Brewing Co. (Thomas Downs)	Revelstoke, B.C.
Kootenay Breweries Limited	Trail, B.C.
Vancouver Breweries Ltd.	Yew St. & 12th Ave. W., Vancouver, B.C.
Silver Spring Brewery Ltd.	303 Esquimalt Road, Victoria, B.C.
Victoria Phoenix Brewing Co. (1929) Ltd.	1921 Government St., Victoria, B.C.

STATISTICS CANADA LIBRARY  
BIBLIOTHÈQUE STATISTIQUE CANADA



1010712560