

32-2133

17

R

LIBRARY OF PARLIAMANT
R
STATISTICS

CANADA
DEPARTMENT OF TRADE AND COMMERCE
DOMINION BUREAU OF STATISTICS
CENSUS OF INDUSTRY

REPORT
on the
COCOA AND CHOCOLATE INDUSTRY
in
CANADA
1927

STATISTICS STATISTIQUE
CANADA CANADA
AUG 16 2010
LIBRARY
BIBLIOTHÈQUE

--- + + + ---

Published by Authority of the Hon. James Malcolm, M.P.,
Minister of Trade and Commerce

+ + +

OTTAWA
1929

NOTE.- The statistics published in the present statement include only the statistics of such manufacturing establishments as make Cocoa and chocolate as their principal products. The statistics relating to specific products are therefore not to be regarded as comprehensive as products like, chocolate, confectionery, all kinds icings, spices, etc., etc., are also found as secondary products of other industries such as Biscuits and confectionery, Coffee and spices etc., etc.

DEPARTMENT OF TRADE AND COMMERCE

DOMINION BUREAU OF STATISTICS

CENSUS OF INDUSTRY

OTTAWA - CANADA

Dominion Statistician: R. H. Coats, B.A., F.S.S. (Hon.), F.R.S.C.
 Chief, Census of Industry: J. C. Macpherson

THE COCOA AND CHOCOLATE INDUSTRY, 1927.

Ottawa, February, 1929.- A report on the Cocoa and Chocolate Industry in Canada for the calendar year 1927 is presented herewith. Reports were received from four operating plants and located by provinces as follows:- 2 in Ontario and 2 in Quebec. As there were less than three firms reporting in any single province, the statistics are presented for the Dominion only.

PRINCIPAL STATISTICS COMPARED

Table 1 presents comparative statistics of the industry for the calendar years 1926 and 1927 with a column showing increase or decrease for each item.

Table 1. - Principal Statistics Compared, 1926 and 1927

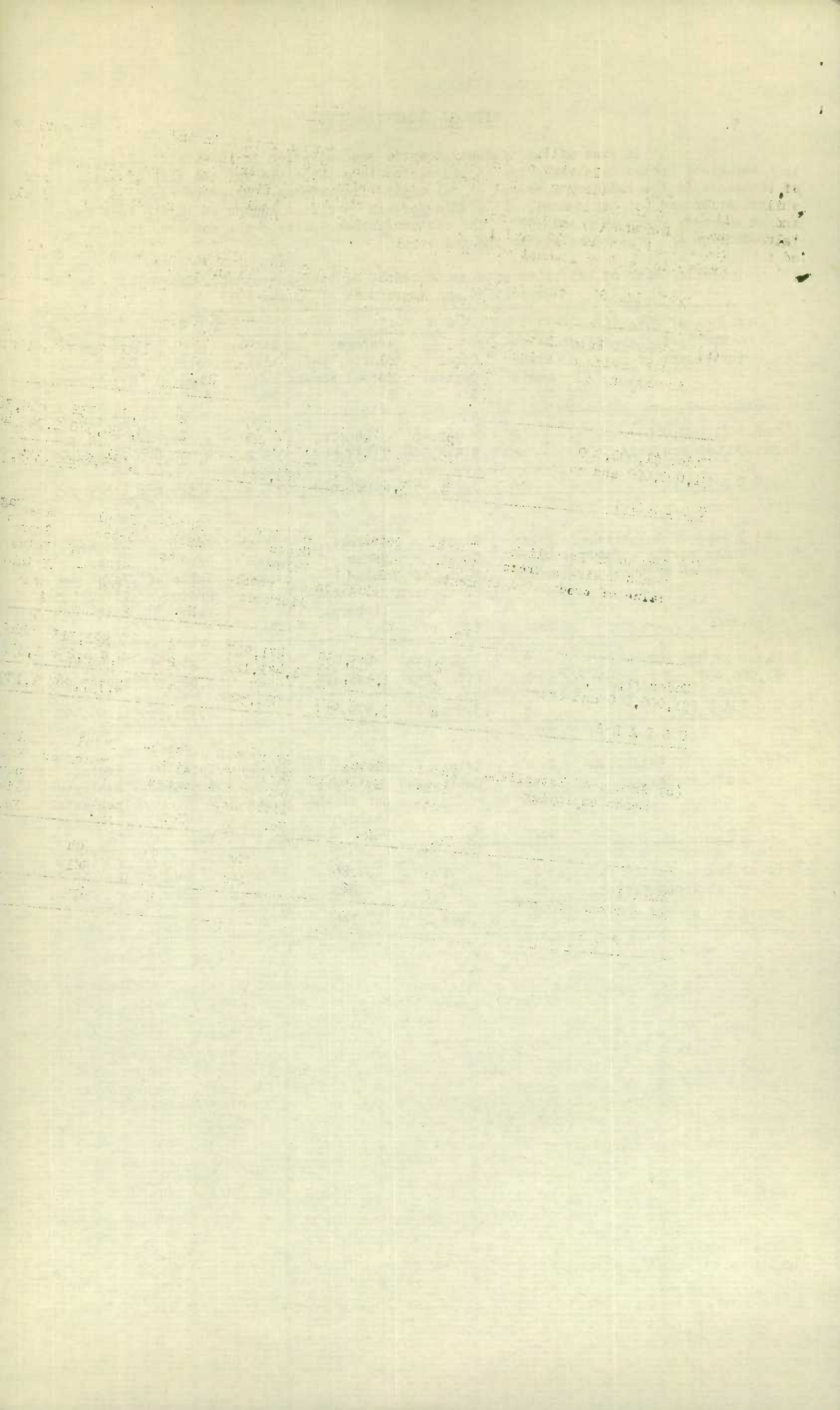
Principal Statistics	Unit	1926	1927	± Increase - Decrease
Establishments reporting	No.	4	4	-
Capital invested	\$	3,866,497	5,319,652	+ 1,453,155
Employees on salaries:-				
Male	No.	106	123	+ 17
Female	No.	22	32	+ 10
Total Salaries	\$	250,079	336,221	+ 86,142
Employees on wages:-				
Male	No.	246	249	+ 3
Female	No.	209	271	+ 62
Total wages	\$	395,658	424,371	+ 28,713
Cost of fuel and electricity	\$	67,654	72,217	+ 4,563
Power installation:-				
Units	No.	162	201	+ 39
Capacity	H.P.	2,597	3,132	+ 535
Cost of materials used	\$	2,364,882	2,931,913	+ 567,031
Gross value of products	\$	3,906,087	4,757,969	+ 851,882
Net value of products	\$	1,541,205	1,826,056	+ 284,851

SIZE OF ESTABLISHMENTS

In view of the tendency towards concentration in industrial enterprises a series of tables has been prepared presenting in a threefold way the size of establishments in the industry measured by (a) capital investment, (b) gross value of production and (c) employment, all within certain specified groups or limitations for the calendar years 1926 and 1927. The tables further indicate the movement in capital, production and employment within the industry.

Table 1A. Size of Establishments, measured by Capital Investment, Gross Value of Production and Employment, 1926 and 1927

(a) Groups of Establishments having a capital investment of	1926			1927		
	Establishments No.	Total Capital \$	Average Capital per Establishment \$	Establishment No.	Total Capital \$	Average Capital per Establishment \$
Under \$1,000,000	2	991,401	495,700	2	1,228,732	614,366
\$1,000,000 and over	2	2,875,096	1,437,548	2	4,090,920	2,045,460
T O T A L S	4	3,866,497	966,624	4	5,319,652	1,329,913
(b) Groups of Establishments having a gross value of production of	1926			1927		
	Establishments No.	Total Gross Value of Production \$	Average Gross Value per establishment \$	Establishments No.	Total Gross Value of Production \$	Average Gross Value per Establishment \$
Under \$1,000,000	2	943,835	471,917	2	892,713	446,356
\$1,000,000 and over	2	2,962,252	1,481,126	2	3,865,256	1,932,628
T O T A L S	4	3,906,087	976,522	4	4,757,969	1,189,492
(c) Groups of Establishments employing	1926			1927		
	Establishments No.	Total Employees No.	Average Employees per establishment No.	Establishments No.	Total Employees No.	Average Employees per establishment No.
Under 100	2	98	49	2	94	47
100 persons and over	2	485	242	2	581	290
T O T A L S	4	583	146	4	675	169



THE COCOA AND CHOCOLATE INDUSTRY, 1927

PRODUCTION STATISTICS

The quantity and selling value at the factory of the various products of the industry during the calendar years 1926 and 1927 is shown in Table 2. The quantity of cocoa produced shows an increase of 334,708 pounds in quantity and \$243,854 in value, whilst chocolate, on the other hand, decreased in quantity produced by 960,166 pounds and in value by \$16,642. Cocoa butter increased in quantity by 283,394 pounds and in value by \$170,489 while the increase in the production of chocolate confectionery amounted to 613,816 pounds and the value to \$451,749. The increase in total value of production over 1926 was \$851,882.

Table 2. - Production of Cocoa and Chocolate, 1926 and 1927.

Products	Unit	1926		1927	
		Quantity	Selling value at factory	Quantity	Selling value at factory
			\$		\$
Cocoa	lb.	2,201,415	634,093	2,536,123	877,947
Cocoa butter	lb.	922,324	294,310	1,205,718	464,799
Chocolate	lb.	8,853,725	1,845,530	7,893,559	1,828,888
Chocolate confectionery	lb.	3,691,871	1,132,154	4,305,687	1,583,903
Other Products	lb.	-	-	12,798	2,432
Total Value		-	3,906,087	-	4,757,969

CAPITAL INVESTMENT

The amount of capital invested in the cocoa and chocolate industry in 1927 is presented by classes in table 3. There was an increase compared with 1926 of \$1,453,155 or 37.6 per cent. Fixed capital including land, buildings, machinery and tools amounted to \$2,936,187 and working capital including materials and stocks on hand, etc. and cash, trading and operating accounts totalled \$2,383,465. Fixed capital increased by \$816,946 and working capital by \$636,209.

Table 3. - Capital Investment 1926 and 1927.

	Fixed Capital	Working Capital		Total Capital
		Materials and stocks on hand, etc.	Cash, trading and operating accts. etc.	
	\$	\$	\$	\$
Capital invested in Canada, 1926.	2,119,241	604,174	1,143,082	3,866,497
Capital invested in Canada, 1927	2,936,187	1,427,818	955,647	5,319,652

EMPLOYMENT STATISTICS

Statistics of employment are presented in a series of tables, as follows:-

Table 4. - Employees, salaries and wages by classes and sex, 1927.

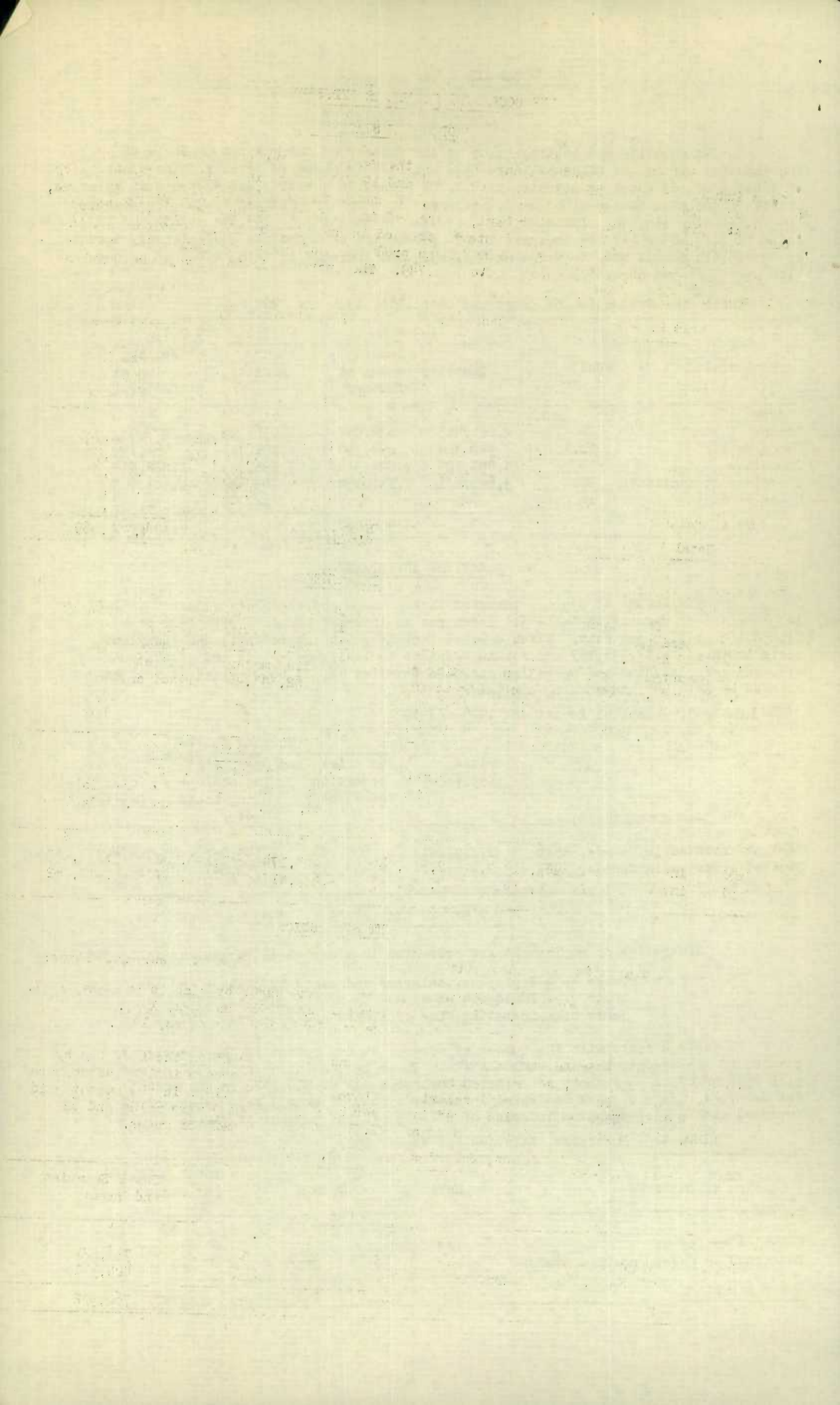
Table 5.-- Employees on wages by months and sex, 1927.

Table 6. - Operating time of plants and employees, 1927.

Table 4 deals with the number of persons at employment in the industry by classes of employment, sex and remuneration. There was an increase in 1927 as compared with 1926 of 27 in the number of salaried employees and of \$86,142. in the amount paid for salaries. Wage earners increased in number by 65, of whom 3 were males and 62 females, with a corresponding increase of \$28,713. in the payment of wages.

Table 4. - Employees, Salaries and Wages, 1927.

Classes of Employees	Male	Female	Total Salaries and Wages
	No.	No.	\$
Salaried employees	123	32	336,221
Employees on wages, average number	249	271	424,371
TOTALS	372	303	760,592



THE COCOA AND CHOCOLATE INDUSTRY, 1927.

EMPLOYMENT STATISTICS (Continued)

Employment by Months.- The number of wage-earners employed during each month of the year according to sex is given in table 5 for the calendar year 1927. The month of highest employment was November with a total of 689, whilst that of the lowest employment was January with a monthly total of 428. The monthly average for the year was 520 of whom 249 were males and 271 were females.

Table 5.- Employment by months, 1927.

Months	Wage-earners		Months	Wage earners	
	Male	Female		Male	Female
January	206	222	July	226	219
February	242	214	August	236	270
March	246	197	September	259	328
April	245	228	October	292	379
May	241	227	November	288	401
June	241	228	December	269	337
Total number employed by months				2,991	3,250
Average monthly employment during year				249	271

Operating time.- The operating time of plants and employees is shown in table 6. Plant operations are shown by full time, part time and idle. Operating time of employees is shown by the number of hours worked per day or shift and per week.

Table 6.- Operating time of Plants and Employees, 1927.

Number of plants reporting	4	
	Totals	Averages
Days in operation -		
On full time	1,106	276.5
On part time	82	20.5
Idle	28	7.0
Hours worked per employee -		
Per day or shift	6,352	8.8
Per week	196	49.0

OTHER EMPLOYMENT STATISTICS

The number and percentage of wage-earners in months of highest employment working specified hours per day is shown in Table 6(a) for Canada and the provinces. For the Dominion, the number working specified hours was distributed between the classes, the percentage working 9 hours being highest. In Ontario over 89 per cent of the employees worked 9 hours per day, whilst in Quebec 48.47 per cent worked 8 hours and 22.14 per cent worked 10 hours. None of the wage-earners in the Dominion worked over 10 hours per day.

Table 6(a).- Hours worked by wage-earners in month of highest employment, 1927.

Provinces	Wage-earners in month of highest employment working per day of				Percentage of wage-earners working per day of			
	8 hours or less	9 hours	10 hours	Over 10 hours	8 hours or less	9 hours	10 hours	Over 10 hours
	No.	No.	No.	No.	p.c.	p.c.	p.c.	p.c.
CANADA	177	484	58	-	24.62	67.32	8.06	-
Ontario	50	407	-	-	10.94	89.06	-	-
Quebec	127	77	58	-	48.47	29.39	22.14	-

1900-1901
1901-1902
1902-1903

... ..
... ..
... ..

...

...

...

...

...

...

...

...

...

THE COCOA AND CHOCOLATE INDUSTRY, 1927.

OTHER EMPLOYMENT STATISTICS - Continued

The number of hours worked per day in the month of highest employment and the standard working hours per week are shown by provinces in Table 6(b). It should be noted that whilst the statistics relating to hours of labour in columns 1, 2 and 3 are based on figures compiled for the month of highest employment, those in columns 4 and 5 represent the total and average of standard weekly hours of labour for the number of establishments reporting to the Bureau. For this reason the relation between daily and weekly hours of labour is to some extent impaired. The average daily hours of labour on the above basis was for the Dominion 8.8, whilst the average standard weekly hours worked out at 49.00 per plant.

Table 6(b).- Hours of Labour per day and per week, 1927.

Province	Total daily hours and number of wage-earners in month of highest employment			Standard working hours per week	
	Total Hours	Total wage-earners	Average hours per day per wage-earner	Total	Average
	No.	No.	No.	No.	No.
CANADA	6,352	719	8.8	196	49.00
Ontario	4,063	457	8.9	93	46.50
Quebec	2,289	262	8.7	103	51.50

MATERIALS USED

The quantity and cost value delivered at the factory, including freight and duty, of the materials used in the industry during 1927 are shown in table 7. The total cost in 1927 amounted to \$2,931,913, an increase of \$567,031 over the preceding year.

Table 7. - Materials Used, 1927.

Kinds of materials	Unit	Quantity	Cost value at works
			\$
Cocoa beans	pound	9,211,605	1,349,618
Cocoa butter	"	2,078,333	590,063
Vanilla beans	"	887	2,836
Sugar	"	5,773,252	367,005
Milk powder	"	694,631	125,025
Glucose	"	241,325	9,529
Nuts, all kinds	"	232,725	58,803
Flour	"	483	23
Spice materials, all kinds	"	42,122	6,760
Essences, essential oils, etc.	Gal.	3,609	25,932
All other materials (value only)	-	-	26,305
Containers, labels, etc. (value only)	-	-	370,009
Total cost of materials and containers	-	-	2,931,913

FUEL CONSUMPTION

The consumption of fuel of various kinds during 1927 is presented in table 8 by quantity and cost value at the factory or works. The total cost of fuel rose from \$32,801 in 1926 to \$34,669 in 1927. Coal of all kinds cost \$30,783 and gas \$3,886. The cost of electricity rose from \$34,853 in 1926 to \$37,548 in 1927, an increase of \$2,695 over the two year period.

THE COCOA AND CHOCOLATE INDUSTRY, 1927

FUEL CONSUMPTION (Continued)

Table 8. - Fuel Consumption, 1927.

Classes of fuel	Unit	Quantity	Cost Value at the works \$
Bituminous coal	ton	4,920	30,783
Gas, artificial	m.c.ft.	3,862	3,886
Total Cost of Fuel	-	-	34,669

POWER INSTALLATION

Power installation is shown for the industry by classes in Table 9. Primary power consisted of 4 steam engines having a rated horse power of 110. Electric motors increased from 158 units of 2,487 horse power in 1926 to 197 units of 3,022 horse power in 1927.

Table 9. - Power installed by classes, 1927.

Classes of power	Number of Units	Horse power according to manufacturers' rating
Steam engines and turbines	4	110
Electric motors operated by purchased power	197	3,022
Total Power Used in Manufactures	201	3,132

IMPORTS AND EXPORTS

Imports.- The quantity and value of the raw, partly and fully manufactured articles relating to this industry imported for consumption in Canada are shown in table 10 for the calendar year 1927, by countries.

Exports.- There are no exports of cocoa or chocolate in any form reported in the trade returns for the Dominion.

Table 10.- Imports of Cocoa and Chocolate and Preparations, 1927.

Articles by countries		Quantity	Value
Cocoa beans, not roasted, crushed or ground	Total	150,921	2,397,759
United Kingdom	Cwt.	39,335	638,003
United States	"	36,770	612,815
Ceylon	"	5,846	85,559
Br. West Africa	"	22,672	351,008
Jamaica	"	11,870	169,530
Trinidad and Tobago	"	18,601	298,151
Other Br. West Indies	"	14,222	213,724
Other Countries	"	1,605	28,969
Cocoa butter -	Total	5,278,997	1,844,725
United Kingdom	Lb.	587,985	205,001
United States	"	360,276	135,572
Germany	"	405,545	141,341
Netherlands	"	3,925,191	1,362,811
Other Countries	"	-	-
Cocoa paste or liquor, chocolate paste or liquor, not sweetened, in blocks or cakes -	Total	71,020	17,511
United Kingdom	Lb.	-	-
United States	"	68,354	16,854
Other Countries	"	2,666	657
Cocoa and chocolate paste or liquor, sweetened in blocks or cakes, not less than two pounds in weight	Total	87,148	24,208
United Kingdom	Lb.	-	-
Switzerland	"	500	142
United States	"	72,452	20,333
Other Countries	"	14,196	3,733
Cocoa or chocolate, preparations of, in powdered form -	Total	1,168,668	116,934
United Kingdom	Lb.	117,468	22,156
United States	"	931,818	73,946
Netherlands	"	115,798	20,204
Other Countries	"	3,584	628
Cocoa or chocolate, preparations of, n.o.p.	Total	87,199	16,253
United Kingdom	Lb.	3,033	1,286
United States	"	58,546	8,313
Other Countries	"	25,570	6,654
Total Cocoa and Chocolate	-	-	4,417,390

THE COCOA AND CHOCOLATE INDUSTRY, 1927.

COCOA AND CHOCOLATE MANUFACTURERS IN CANADA, 1927

QUEBEC

Walter Baker and Co. Ltd.	1000 Albert St.	Montreal,
J. S. Fry & Sons (Canada) Ltd.	2025 Masson St.	Montreal.

ONTARIO

Rowntree Co., Ltd.	72-90 Sterling Road,	Toronto.
Dominion Chocolate Co. Ltd.	72-76 Duchess St.,	Toronto.

STATISTICS CANADA: LIBRARY
BIBLIOTHÈQUE STATISTIQUE CANADA



1010712998