

34-214

CD

Historical File Copy

STATISTICS STATISTIQUE
CANADA CANADA

APR 26 2011

LIBRARY
BIBLIOTHEQUE

FEB 9 1931

PROPERTY OF THE
LIBRARY.

CANADA

DEPARTMENT OF TRADE AND COMMERCE

DOMINION BUREAU OF STATISTICS

CENSUS OF INDUSTRY

REPORT

on the

HAT & CAP INDUSTRY

in

CANADA

1929

-----+ + +-----

Published by Authority of the Hon. H. H. Stevens, M.P.,
Minister of Trade and Commerce

+ + +

OTTAWA

1931

412-10
83

NOTE.- The statistics published in the present statement include only the statistics of such manufacturing establishments as make hats and caps as their principal product. Statistics relating to specific products are therefore not to be regarded as comprehensive, as products like fur hats and caps, knitted hats and caps and children's headwear are also found as secondary products of other industries such as Fur Goods, Hosiery and Knit goods, Women's Factory Clothing.

DEPARTMENT OF TRADE AND COMMERCE
DOMINION BUREAU OF STATISTICS
CENSUS OF INDUSTRY
OTTAWA - CANADA

Dominion Statistician: R. H. Coats, B.A., F.S.S. (Hon.), F.R.S.C.
Chief, Census of Industry: J. C. Macpherson.

THE HAT AND CAP INDUSTRY IN CANADA

1929

Ottawa, December, 1930 - A report is herewith presented on the Hat and Cap Industry in Canada for the calendar year 1929. Reports were received from 152 establishments, a decrease of 7 from the total for the preceding year and were located by provinces as follows:- Ontario 76; Quebec 60; Manitoba 7; Alberta 4; British Columbia 1; New Brunswick 2; Nova Scotia 1; Saskatchewan 1. In order not to divulge information concerning the operations of individual establishments, statistics for the last four provinces have been combined and are shown throughout this report as "Other Provinces."

PRINCIPAL STATISTICS

A summary of the principal statistics of the industry is given in Table 1. by provinces for the calendar year 1929.

Table 1.- Principal Statistics by Provinces - 1929.

		CANADA	ONTARIO	QUEBEC
Establishments	No.	152	76	60
Capital Investment	\$	7,709,270	4,478,601	2,663,973
Employees on salaries - Male	No.	375	159	192
Female	No.	204	97	84
Salaries	\$	1,025,155	553,366	398,106
Employees on wages (average number)-				
Male	No.	1,584	874	595
Female	No.	2,499	1,265	1,064
Wages	\$	3,422,549	1,835,954	1,389,090
Cost of fuel and electricity	\$	102,225	53,144	38,205
Power installation				
Units	No.	359	210	128
Capacity	H.P.	1,549	817	683
Cost of Materials	\$	7,710,546	3,959,328	3,251,961
Gross value of products	\$	15,523,376	8,030,472	6,516,364
Net value of products	\$	7,812,830	4,060,644	3,264,403
		MANITOBA	ALBERTA	OTHER PROVINCES *
Establishments	No.	7	4	5
Capital Investment	\$	223,792	40,086	302,818
Employees on Salaries - Male	No.	12	2	10
Female	No.	4	2	17
Salaries	\$	32,304	5,030	30,349
Employees on Wages (Average number)				
Male	No.	34	9	72
Female	No.	87	17	66
Wages	\$	90,072	15,539	91,894
Cost of fuel and electricity	\$	1,816	879	3,181
Power Installation -				
Units	No.	8	7	6
Capacity	H.P.	29	11	109
Cost of materials	\$	238,427	43,990	206,340
Gross value of products	\$	452,721	79,968	443,851
Net value of products	\$	214,294	35,978	237,511

* Includes: New Brunswick 2, Nova Scotia 1, British Columbia 1, Saskatchewan 1.

1870

1871

1872

1873

1874

1875

1876

1877

1878

1879

1880

1881

1882

1883

1884

1885

1886

1887

1888

1889

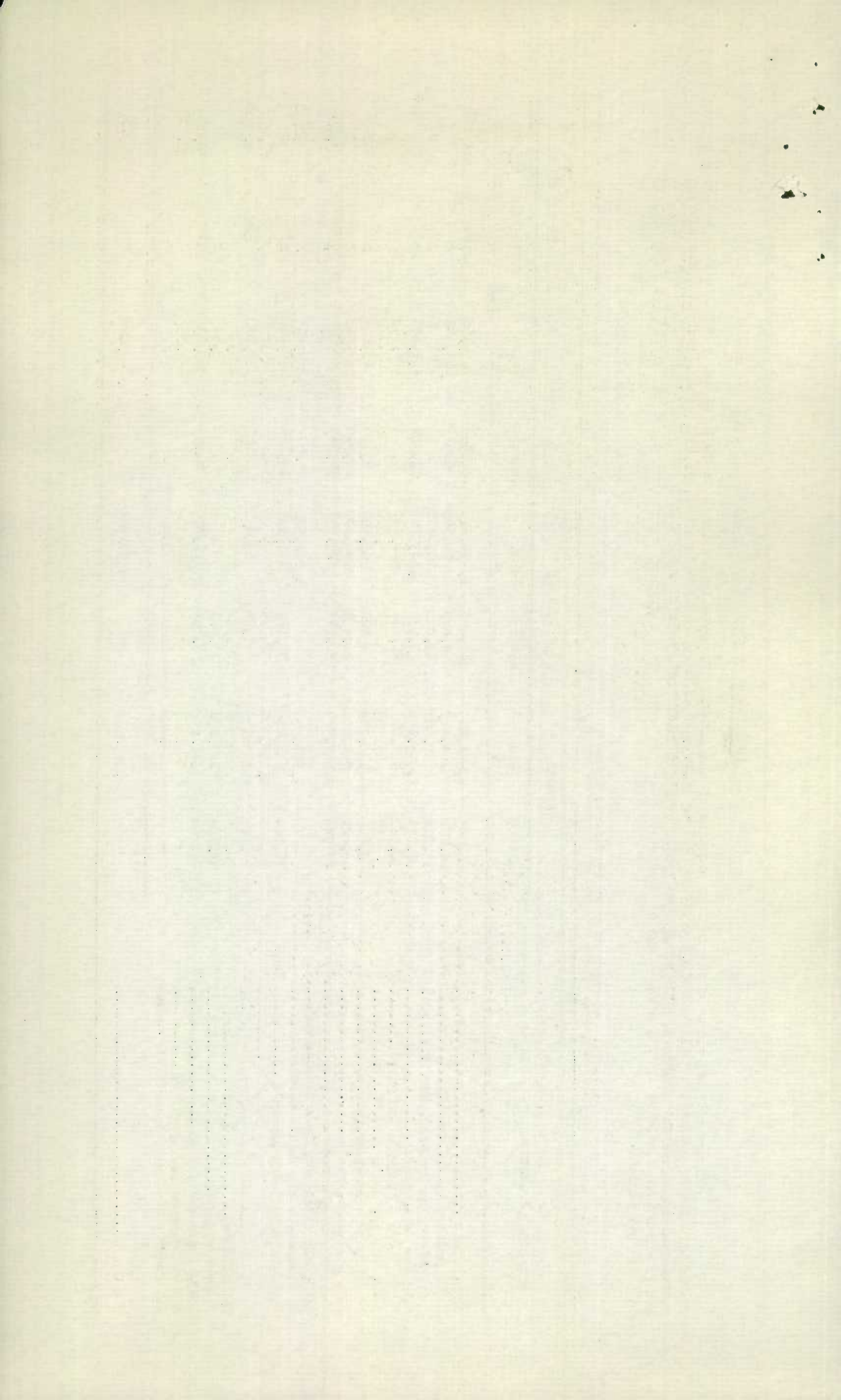
1890

PRODUCTION

The quantity and value of the various products of the industry is given by provinces in Table II for the calendar year 1929. The total value of production fell from \$16,973,193 in 1928 to \$5,523,376 in 1929, a decrease of \$11,449,817. The principal items showing substantial increases in value were, - Caps, uniform; women's velour hats; men's hats of wool; men's straw hats and shapes; and hats, all other, women's and children's. All other items of production show decreases ranging from \$508,556 in women's and girls' fur felt hats to \$375 for hat linings.

Table II. - Production by Provinces, 1929.

Principal Products	CANADA		ONTARIO		QUEBEC		MANITOBA		
	Quantity	Value \$	Quantity	Value \$	Quantity	Value \$	Quantity	Value \$	
Caps, cloth	Doz.	266,583	2,901,743	127,818	1,354,618	80,906	759,168	31,647	332,721
" uniform	"	10,292	184,413	4,089	75,903	5,945	103,301	-	-
" other, advertising, etc.	"	43,016	38,609	43,016	38,609	-	-	-	-
Hats fur felt, men's	"	67,079	2,309,156	51,975	1,843,908	13,764	411,591	-	-
women's and girls	"	31,920	591,611	22,418	411,417	9,502	180,194	-	-
Hats, velour, men's	"	439	17,583	330	14,858	109	2,725	-	-
women's	"	3,840	130,784	720	45,100	3,120	85,684	-	-
Hats wool, felt, men's	"	49,621	961,673	26,751	531,180	22,420	419,693	-	-
women's	"	87,924	1,647,823	30,277	523,791	56,147	1,098,032	1,000	17,000
Hats, all other women's and children's (satin, silk, felt, velvet; etc.) ..	"	-	2,293,737	-	1,071,520	-	1,202,217	-	20,000
Straw hats and shapes, men's	Doz.	78,614	562,195	50,963	432,135	27,651	130,060	-	-
women's	"	89,580	2,129,592	32,914	907,586	54,066	1,170,406	2,400	48,000
children's	"	25,618	218,635	6,269	58,212	18,899	156,023	150	2,000
Hat linings	"	424,229	367,388	183,562	170,123	240,667	197,265	-	-
Buckram shapes	"	58,603	124,131	17,861	60,706	40,942	83,425	-	-
Velvet hats and shapes	"	21,006	560,183	5,534	211,870	14,472	326,313	1,000	22,000
All other products, specified	"	-	480,722	-	275,238	-	180,287	-	11,000
All other products, not specified	"	-	3,698	-	3,698	-	-	-	-
TOTAL		-	15,523,376	-	8,030,472	-	6,516,364	-	452,721

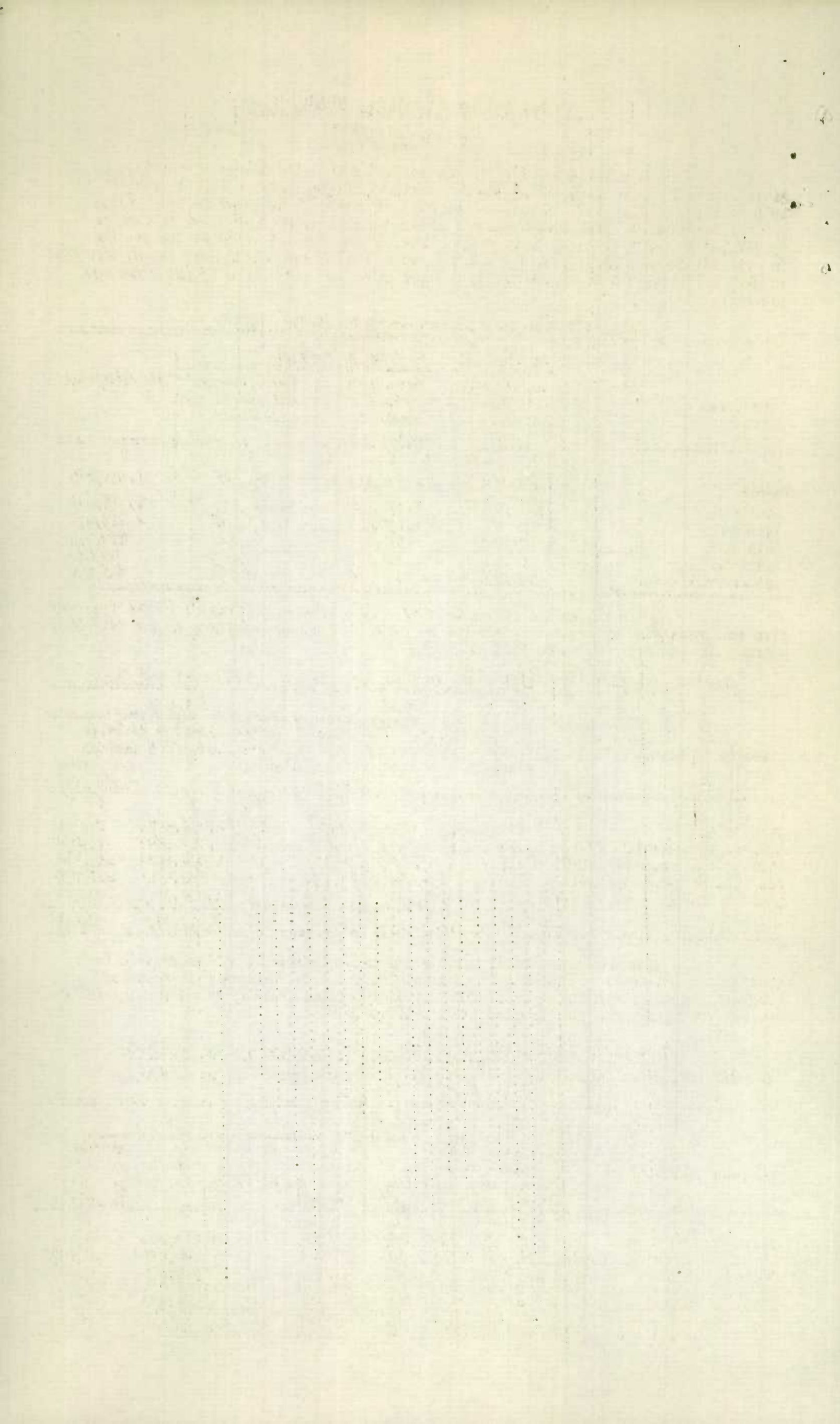


PRODUCTION (Concluded).

Production by Provinces, - 1929.

Principal Products	ALBERTA		OTHER PROVINCES	
	Quantity	Value	Quantity	Value
Caps, cloth	2,511	32,665	23,701	392,271
" uniform	21	503	237	4,706
Hats, fur felt, men's	1,000	36,000	340	17,657
women's and girls	-	-	-	-
Hats, velour, men's	-	-	-	-
women's	-	-	-	-
Hats, wool, men's	450	10,800	-	-
women's	-	-	500	9,000
Hats all other - women's and children's (includes silk satin, felt, velvet, etc.	-	-	-	-
Straw hats and shapes, men's	-	-	-	-
women's	-	-	200	3,600
children's	-	-	300	2,400
Hat linings	-	-	-	-
Velvet hats and shapes	-	-	-	-
All other products, specified	-	-	-	14,217
All other products, not specified	-	-	-	-
T O T A L	-	79,968	-	443,851

NOTE:- Data here given do not necessarily represent the total Canadian production of these commodities, since they are also produced in other industries.



THE HAT AND CAP INDUSTRY IN CANADA, 1929.

CAPITAL INVESTMENT.

The capital employed in the industry during the calendar year 1929 is given by provinces in Table 111. The total capitalization dropped from \$8,164,615 in 1928 to \$7,709,270 in 1929, a decrease of \$455,345 over the two year period. Fixed capital decreased by \$87,732. Working capital decreased from \$5,955,561 in 1928 to \$5,587,948 in 1929, or a decrease of \$367,613. Of the total investment the province of Ontario contributed \$4,478,601 or 58.1 per cent. Quebec was accountable for \$2,663,973 or 34.5 per cent, whilst the remaining 7.4 per cent was contributed by the other six provinces.

Table 111.- Capital Investment by Provinces, 1929.

Provinces	FIXED CAPITAL	WORKING CAPITAL		Total Capital
	Land, buildings and fixtures machinery and tools	Materials on hand stocks in process	Cash trading and operating accounts	
	\$	\$	\$	\$
CANADA	2,121,322	3,249,253	2,338,695	7,709,270
Ontario	1,365,350	1,876,630	1,236,621	4,478,601
Quebec	572,790	1,139,591	951,592	2,663,973
Manitoba	33,124	113,826	76,842	223,792
Alberta	10,922	18,561	10,603	40,086
Other Provinces	139,136	100,645	63,037	302,818

A measure of the size and importance of the establishment in the industry from the standpoint of capital investment is shown by certain groupings in the following summary for the calendar years 1928 and 1929.

Capital invested in establishments grouped according to value, 1928 and 1929.

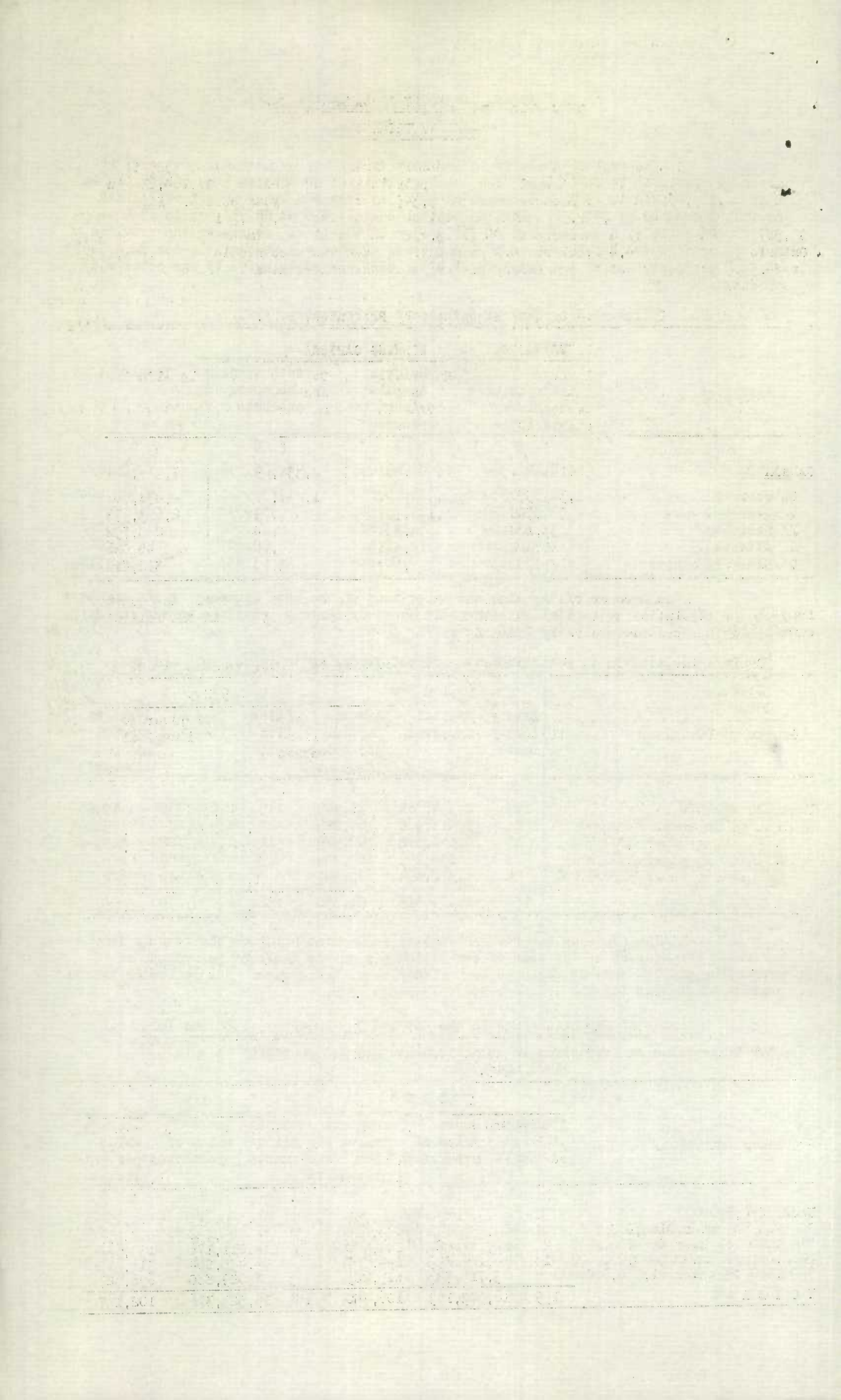
Groups of Values	1928			1929		
	Estab-lish-ments	Capital invested	Average capital per estab-lishment	Estab-lish-ments	Capital invested	Average capital per estab-lishments
	No.	\$	\$	No.	\$	\$
Under \$50,000	117	2,334,084	19,949	115	2,292,398	19,934
\$50,000 to under \$100,000	22	1,478,960	67,225	20	1,461,284	73,064
\$100,000 to under \$200,000	15	2,144,678	142,979	11	1,424,122	129,466
\$200,000 to under \$500,000	3	854,199	284,733	3	662,550	220,850
\$500,000 to under \$1,000,000	2	1,352,694	676,347	3	1,868,916	622,972
T O T A L	159	8,164,615	51,350	152	7,709,270	50,719

The tendency towards combination in manufacturing or the reverse is indicated by a measure of the size of establishments on the basis of (a) volume of production and (b) persons employed both within specified groups. The following tables present statistics for the calendar years 1928 and 1929.

Size of Establishments in the Hat and Cap Industry, 1928 and 1929

(a) Gross value of production in establishments grouped according to value, 1928 and 1929.

Groups of Values	1928			1929		
	Estab-lish-ments	Gross value of production	Average value per estab-lishments	Estab-lish-ments	Gross value of production	Average value per estab-lishments
	No.	\$	\$	No.	\$	\$
Under \$50,000	62	1,400,296	22,585	61	1,592,678	26,109
\$50,000 to under \$100,000	48	3,553,242	74,026	38	2,592,838	68,233
\$100,000 to under \$200,000	29	4,178,027	144,070	36	4,811,176	133,644
\$200,000 to under \$500,000	14	4,125,895	294,707	14	4,436,804	316,915
\$500,000 to under \$1,000,000	6	3,715,733	619,289	3	2,089,880	696,627
T O T A L	159	16,973,193	106,750	152	15,523,376	102,127



(b) Employees in establishments by numbers and groups, 1928 and 1929.

Groups of employees	1928			1929		
	Estab- lish- ments	Number of employees	Average number of employees per estab- lishment	Estab- lish- ments	Number of employees	Average number of employees per estab- lishment
	No.	No.	No.	No.	No.	No.
Under 20 employees	80	790	9.9	82	839	10.2
20 to under 50	52	1,533	29.5	46	1,410	30.7
50 to under 100	15	921	61.4	14	918	65.6
100 to under 200	12	1,673	139.4	9	1,268	141.0
200 to under 500	-	-	-	1	227	227.0
T O T A L	159	4,917	30.9	152	4,662	30.7

EMPLOYEES, SALARIES AND WAGES

The total number of persons employed in the industry is given by provinces in Table IV. for the calendar year 1929 by (a) classes of employment, (b) sex and (c) salary and wage payments. The total number of persons in all classes employed during the calendar year 1928 was 4,917, whilst for the period covered by this report the total employees were 4,679, a decrease of 238. The total payroll fell from \$4,879,405 in 1928 to \$4,455,829 in 1929, a decrease of \$423,576 or 8.7 per cent.

Table IV. - Employees, Salaries and Wages by Provinces, 1929.

Provinces	Employees on Salaries			Employees on Wages			Total		
	M.	F.	Salaries	M.	F.	Wages	M.	F.	Salaries & Wages
	No.	No.	\$	No.	No.	\$	No.	No.	\$
<u>CANADA</u>	375	204	1,025,155	1,589	2,511	3,430,674	1,964	2,715	4,455,829
Ontario	159	97	553,366	876	1,265	1,836,421	1,035	1,362	2,389,787
Quebec	192	84	398,106	597	1,075	1,395,568	789	1,159	1,793,674
Manitoba	12	4	33,304	34	87	90,072	46	91	128,376
Alberta	2	2	5,030	10	17	16,469	12	19	21,499
Other Provinces	10	17	30,349	72	67	92,144	82	84	122,493

OTHER EMPLOYMENT STATISTICS

The number of days the factories were in operation during the calendar year 1929, together with the number of hours per day and per week normally worked by wage-earners will be found in Table V(a). The number of wage-earners employed during the same period is shown by sex and months in Table V(b). Employment reached its maximum in the month of March with 4,491, whilst the month of least employment was December with 3,167.

Table V(a).- Days in Operation and Hours Worked, 1929.

Number of Establishments in Operation	152	
	Total	Average per factory
Days in operation on full time	36,757	241.82
Days in operation on part time	6,023	39.63
Days idle	3,124	20.55
Number of hours worked by wage-earners per day or shift	42,043	8.39
Number of hours worked by wage-earners per week	6,798	44.72

OTHER EMPLOYMENT STATISTICS (Concluded)

Table V(b).- Wage Earners by Months, 1929.

Months	Male No.	Female No.	Months	Male No.	Female No.
January	1,470	2,318	July	1,461	2,095
February	1,607	2,660	August	1,581	2,655
March	1,681	2,810	September	1,545	2,773
April	1,641	2,752	October	1,586	2,591
May	1,603	2,633	November	1,473	2,071
June	1,553	2,217	December	1,409	1,758
TOTAL				18,710	29,333
Average number employed during the year				1,584	2,499

The number and percentage of wage-earners in months of highest employment working specified hours per day is shown in Table V(c) for Canada and the provinces. For the Dominion, the number working specified hours was distributed between the classes the percentage working 8 hours being highest. Manitoba, Quebec, Ontario and British Columbia have the highest percentage of wage-earners working 8 hours. In Manitoba, Alberta, New Brunswick and Nova Scotia the 9 hour day prevails whilst in Quebec 8.23 per cent of the wage-earners work 10 hours. No workers in the industry are employed for periods exceeding 10 hours per diem.

Table V(c).- Hours worked by Wage-earners in month of highest employment, 1929

Provinces	Wage-earners in month of highest employment working per day of				Percentage of wage-earners working per day of			
	8 hours or less	9 hours	10 hours	Over 10 hours	8 hours or less	9 hours	10 hours	Over 10 hours
	No.	No.	No.	No.				
CANADA	3,208	1,621	179	-	64.05	32.37	3.58	-
Ontario	1,612	1,010	14	-	61.16	38.31	.53	-
Quebec	1,511	329	165	-	75.36	16.41	8.23	-
Manitoba	71	88	-	-	44.65	55.35	-	-
Alberta	2	31	-	-	6.06	93.94	-	-
Other Provinces	12	163	-	-	6.86	93.14	-	-

The number of hours worked per day in the month of highest employment and the standard working hours per week are shown by provinces in Table V(d). It should be noted that whilst the statistics relating to hours of labour in columns 1, 2 and 3 are based on figures compiled for the month of highest employment, those in columns 4 and 5 represent the total and average of standard weekly hours of labour for the number of establishments reporting to the Bureau. For this reason the relation between daily and weekly hours of labour is to some extent impaired. The average daily hours of labour on the above basis was for the Dominion 8.39 whilst the average standard weekly hours worked out at 44.72 per plant.

Table V(d).- Hours of Labour per day and per week, 1929.

Provinces	Total daily hours and number of wage-earners in month of highest employment			Standard working hours per week	
	Total hours	Total wage-earners	Average hours per day per wage-earner.	Total	Average per establishment
	No.	No.	No.	No.	No.
CANADA	42,043	5,008	8.39	6,798	44.72
Ontario	22,126	2,636	8.39	3,397	44.70
Quebec	16,699	2,005	8.33	2,654	44.23
Manitoba	1,360	159	8.55	312	44.57
Alberta	295	33	8.94	190	47.50
Other Provinces	1,563	175	8.93	245	49.00

FUEL CONSUMPTION

The quantity and value of the various kinds of fuel consumed in the industry during the calendar year 1929 is given in Table VI. The total cost of all fuel consumed fell from \$73,170 in 1928 to \$62,149 in 1929, a decrease of \$11,021. Coal of all kinds holds first place in importance with a total of \$48,521 followed by gas with \$10,714, whilst coke takes third position with \$1,341. The cost of electricity used for power purposes rose from \$39,992 in 1928 to \$40,076 in 1929, an increase of \$84.

Table VI. - Fuel Consumption, 1929.

Kinds of Fuel	Units of Measure	Quantity	Cost Value \$
Bituminous Coal	Ton	6,385	36,845
Anthracite Coal	"	1,756	11,340
Lignite Coal	"	20	336
Coke	"	104	1,341
Gasoline	Gallon	684	229
Oil (Fuel)	"	10,225	1,297
Wood	Cord	7	47
Gas	m.c. feet	10,964	10,714
T O T A L		-	62,149

POWER INSTALLATION

The power installation of the industry is given in Table VII. for the calendar year 1929, by (a) classes of power (b) number of units in each class and (c) horse-power capacity according to manufacturers' rating. The number of units actually in use rose from 350 in 1928 to 371 in 1929, an increase of 21 whilst the horse-power capacity fell from 2,031 in 1928 to 1,814 in 1929, or a decrease of 217 H.P. over the two year period.

Table VII. - Power Installation, 1929.

Classes of Power	Number of Units	Horse-power Capacity
Steam engines and turbines	12	429
Electric motors operated by purchased power	347	1,230
Total power used in manufacturing	359	1,649
Electric motors operated by power generated at the factory	12	165
Total Electric Motors	359	1,385
Total Power Installation	371	1,814

MATERIALS USED

The cost value of all materials used in the industry fell from \$8,290,055 in 1928 to \$7,710,546 in 1929, a decrease of \$579,509.

IMPORTS AND EXPORTS

The value of raw and partly manufactured materials and finished products of the industry imported into and exported from Canada during the calendar year 1929 will be found in Table IX(a), (b) and (c). The total imports of raw or partly manufactured materials during 1929 amounted to \$2,831,316, wholly manufactured articles to \$3,099,515 or a grand total of imports amounting to \$6,017,839. Exports of goods manufactured in Canada totalled \$87,218.

Table IX. (a).- Imports of raw or partly manufactured materials, 1929.

Articles Imported	United Kingdom	United States	Other Countries	Total
	\$	\$	\$	\$
Hatters' fur not on the skin	46,478	93,185	714,098	853,761
Buckram adapted for manufacture of hat shapes	-	-	-	-
Hatters' bands and hat sweats, etc.	27,126	223,739	10,711	261,576
Hoods, unfinished of leghorn, palm leaf and grass	73	1,146	2,126	3,345
Braids or plaits of chip, palm leaf or straw, etc.	5,024	152,663	291,686	449,373
Hat, cap and bonnet shapes and crowns	309,321	34,140	333,283	676,744
Ribbons, corded etc. imported by hat manufacturers	1,251	131,497	57,987	190,735
Artificial feathers, leaves, flowers, etc. .	8,839	70,725	316,008	395,572
T O T A L	398,112	707,095	1,725,899	2,831,106

Table IX(b). - Imports of manufactured hats and caps, 1929.

Articles Imported	United Kingdom	United States	Other Countries	Total-All Countries
	\$	\$	\$	\$
Hats and caps of fur	429	614	138	1,181
Hats of felt	689,208	352,202	649,732	1,691,142
Caps, cloth	24,481	41,038	8,569	74,088
Hats, caps and bonnets of straw, grass or chip	95,850	141,413	137,716	374,979
Hats, caps and bonnets, n.o.p.	221,775	462,171	274,179	958,125
T O T A L	1,131,743	997,438	970,334	3,099,515

Table IX(c).- Exports of Hats and Caps, 1929.

Articles Exported	United Kingdom	United States	Other Countries	Total -All Countries
	\$	\$	\$	\$
Hats and Caps	34	1,760	85,424	87,218

CONSUMPTION OF HEADWEAR, 1929.

The consumption requirements of headwear in Canada based on 1929 figures are shown in the subjoining summary:-

Manufacture of Hats, Caps, Shapes, etc.	\$ 15,523,376
Imports of Hats, Caps, Shapes, etc.	5,930,621
T O T A L	21,453,997
Less exports of Hats, Caps, etc.,	87,218
Available for Consumption	21,366,779

APPENDIX

LIST OF FIRMS MANUFACTURING HATS AND CAPS, 1929

NOVA SCOTIA

Eastern Hat and Cap. Mfg. Co. Ltd.	62 Elm St.	Truro
------------------------------------	------------	-------

NEW BRUNSWICK

J. B. Bardsley Hat Co. Maritime Cap. Ltd.	7 King Square Botsford St. Extension	Saint John Moncton
----------------------------------------------	-----------------------------------------	-----------------------

QUEBEC

The Pacific Cap Co. Reg'd.	203-10 Ontario St.	Montreal
Arrow Hat Mfg. Co.	649 Notre Dame W.	Montreal
McCready Cap Co.	315 Paul St. West	Montreal
Charlebois Hat Co.	409 Notre Dame W.	Montreal
Belmore Hat Co. Ltd.	710 Notre Dame W.	Montreal
Justine Hat Mfg. Co. Ltd.	627 Notre Dame W.	Montreal
B.E. Leclerc	58 St. Joseph St.	Quebec
L. Backler Ltd.	360 Recollet St.	Montreal
Bob-Morris Cap Co.	50 Leduc St.	Hull
Buckley Drouin Co. Ltd.	430 McGill St.	Montreal
Fashion Headwear, Ltd.	440 McGill St.	Montreal
Globe Hat Works, Ltd.	74 Turgeon St.	Montreal
The E. Guillet & Sons Co. Ltd.	Box 266	Marieville
London Hat and Cap. Mfg. Co.	710 Notre Dame St. W.	Montreal
The National Cap Co.	1006 Beaver Hall Hill	Montreal
John W. Peck and Co. Ltd.	5505 St. Lawrence Blvd.	Montreal
Progress Brand Cap. Co.	903 Bleury and Craig Sts.	Montreal
Pelletier & Cie	1468 St. Elizabeth St.	Montreal
Gomberg and Fogul	710 Notre Dame West	Montreal
J. E. Sevigny	79 Mount Royal Ave. E.	Montreal
St. Lawrence Cap and Hat Mfg. Co.	3609 St. Lawrence Blvd.	Montreal
A. Sigmond	907-911 Bleury St.	Montreal
Wm. Scully Ltd.	1202 University St.	Montreal
Piko Hat Ltd.	362 Notre Dame St. W.	Montreal
Julius Winstan	10 Ontario West	Montreal
Wolfe Cap Co.	1470 Peel St.	Montreal
Universal Hat Mfg. Co.	627 Notre Dame St. W.	Montreal
Acme Hat Mfg. Co.	426 St. Helen St.	Montreal
Canadian Hat Mfg. Co. Ltd.	1006 Beaver Hall Hill	Montreal
Dominion Straw Goods Mfg. Co.	686 Notre Dame West	Montreal
Monarch Hat Co. Ltd.	686 Notre Dame St. W.	Montreal
Style Hat Frame Co.	627 Notre Dame St. West	Montreal
Victoria Mfg. Co. Ltd.	440 St. Helen St.	Montreal
Blue Bird Hat Mfg. Co.	455 St. Helene St.	Montreal
Modern Hat Mfg. Co. Ltd.	687 Notre Dame St. W.	Montreal
Joseph Leone Co. Ltd.	455 St. Helen St.	Montreal
Wyse Sons and Co. Ltd.	455 St. Peter St.	Montreal
LaBelle Hat Co. Ltd.	445 St. Helen St.	Montreal
The Imperial Hat Mfg. Co.	442 St. Helen St.	Montreal
Lewis Hat Mfg. Co.	619 Notre Dame St. W.	Montreal
Reubins Hat Lining Co.	710 Notre Dame St. W.	Montreal
Regal Hat Frame Co.	710 Notre Dame St. W.	Montreal
Laurie Hat Frame Co.	426 St. Helen St.	Montreal
D.F. Morgan Ltd.	4821 Rouen St.	Montreal
Dominion Hat & Cap Co.	4060 St. Lawrence Blvd.	Montreal
Schulman Choplin Canada, Ltd.	426 St. Helen St.	Montreal
Freeman & Freeman Reg'd.	433 Notre Dame W.	Montreal
Reliable Hat and Cap. Mfg. Co.	1317 Ontario E.	Montreal
Hatters Lining Co. Ltd.	Room 600, 389 St. Paul W.	Montreal
Caplan Hat Lining Co.	627 Notre Dame West.	Montreal
Supreme Hat Co. Inc.	362 Notre Dame West	Montreal
Stanky Hat Corporation	430 St. Helen St.	Montreal
Roy and Cie Ltee.	438 St. Helen St.	Montreal

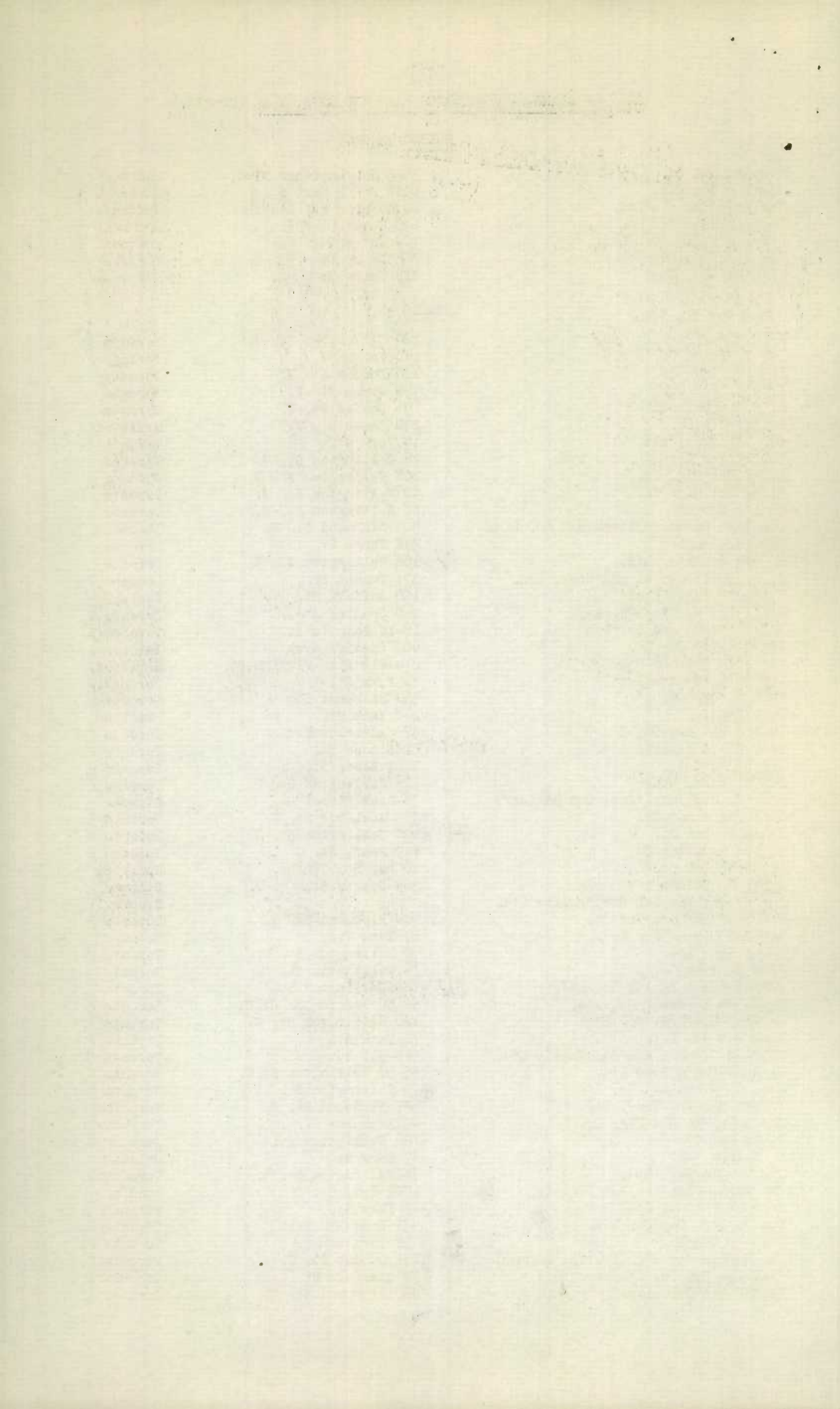
LIST OF FIRMS MANUFACTURING HATS AND CAPS, 1929 (Cont'd.)

QUEBEC - (Cont'd.)

Ros-Ann Hat Co.	3643 St. Lawrence Blvd.	Montreal
Dival & Gervais	6912 St. Hubert St.	Montreal
Kastners Imports Ltd.	10 Ontario St. West	Montreal
Novelty Hat Mfg. Co.	690 Notre Dame W.	Montreal
Jewel Hat Mfg. Co. Ltd.	704 Notre Dame W.	Montreal
The Riccardo Hat Co.	705 Notre Dame St. W.	Montreal
Lion Cap Co. Ltd.	710 Notre Dame W.	Montreal.

ONTARIO

Maple Leaf Hat Mfg. Co.	124 Wellington St. W.	Toronto
The T. Eaton Co. Ltd.	190 Yonge St.	Toronto
Fashion Cap. Co.	124 Dundas St. W.	Toronto
J. & K. Cap Co.	758 Queen St. W.	Toronto
A. W. Wagenfield	696 Dundas St. W.	Toronto
Empire Cap Co.	230 James St. N.	Hamilton
Capital Caps, Ltd.	14 York St.	Toronto
The Beaver Hat Mfg. Co. Ltd.	76 Wellington St. W.	Toronto
Crown Hat Mfg. Co.	108 Wellington St. W.	Toronto
Exide Hat Mfg. Co.	90 Wellington St. W.	Toronto
Vanity Hat Co.	80 Wellington St. W.	Toronto
Canadian Panama & Straw Hat Co. Ltd.	579 Richmond St. W.	Toronto
Geo. T. Lanning	338 Yonge St.	Toronto
K. and G. Hats, Ltd.	108 Wellington St. W.	Toronto
J. R. Shuttleworth and Sons, Ltd.	377 Dundas St.	London
Biltmore Hats, Ltd.	155 Suffolk St.	Guelph
Brill Hat and Cap Co. Ltd.	260 Spadina Ave.	Toronto 2.
Robert Cream and Co. Ltd	16-18 Balmuto St.	Toronto 5.
The Quality Cap Co.	402 Spadina Ave.	Toronto 2
Hamilton Uniform Cap Co.	214-216 King William St.	Hamilton
New York Fashion Hat	76 York St.	Toronto 2.
Kaufman Cap Co.	352 Bathurst St.	Toronto 2.
Lees Cap Co.	248 York St.	Hamilton
London Hat and Cap Co.	325 Adelaide W.	Toronto 2.
Muir Cap & Regalia Ltd.	51 Simcoe St.	Toronto 2.
W. G. North	1267 Bloor St. W.	Toronto 4
Palter Sons, Ltd.	126 Wellington St. W.	Toronto 2
Mrs. J. Redlick ("Joe, The Hatter")	76 Bank Street	Ottawa
Star Cap & Hat Co.	355 Adelaide St. W.	Toronto 2.
Triangle Hat Co.	108 Wellington St. W.	Toronto 2.
United Headwear Co.	119 Pearl St.	Toronto 2
Victoria Cap Co.	66 Bay St. North.	Hamilton
Chas. S. Wilder	304 Sparks St.	Ottawa.
The Wolthausen Hat Corporation Ltd.		Brockville
Peerless Hat and Cap Co.	400 Richmond St. W.	Toronto 2.
Art Hat Lining Co. Ltd.	69 York St.	Toronto 2.
Baker Hats Ltd.	78 Wellington St. W.	Toronto 2.
John D. Ivey Co. Ltd.	74 Wellington St. W.	Toronto 2.
Canadian Hat Lining Co. Ltd.	126 Wellington St.	Toronto 2.
Canadian Headwear Co. Ltd.	80-82 Wellington St. W.	Toronto 2.
Fashion Hat Mfg. Co. Ltd.	126 Wellington St. W.	Toronto 2.
Lion Hat Co. Ltd.	71 York St.	Toronto 2.
William Gluckin and Co. Canada Ltd.	585-591 Yonge St.	Toronto 5.
G. Goulding & Sons Ltd.	55-57 Wellington St. W.	Toronto 2.
Jno. C. Green and Co. Ltd.	70 Wellington St. W.	Toronto 2.
E.C. Walker and Sons, Ltd.	587 Richmond St. W.	Toronto 2.
The American Hat Mfg. Co.	49 Bathurst St.	Toronto 2.
Venus Hat Co.	126 Wellington St. W.	Toronto 2.
E. Wilson	67 Bank St.	Ottawa
The Wengle Hat, Ltd.	76 Wellington St. W.	Toronto 2.
The Anglo-Canadian Hat Mfg. Co.	188½ King St.	London
Eclipse Hat Co. Ltd.	71 York St.	Toronto
The G. & C. Cap Co. Ltd.	431 King St. West	Toronto 2.
Classic Cap Co.	158 York St.	Toronto 2.
The Rayman Cap Mfg. Co. (H. Rayman)	232 Dundas St. W.	Toronto 2.
Sterling Cap Co. of Toronto	72 Stafford St.	Toronto 3.
Palter Cap Co., Ltd.	400 Richmond St. W.	Toronto 3.



LIST OF FIRMS MANUFACTURING HATS AND CAPS, 1929 (Concluded)

ONTARIO Cont'd.

Empire Hat Co. Ltd.	116 Spadina Ave.	Toronto 2.
Gloria Hats Ltd.	90 Wellington St. W.	Toronto 2.
Ear David Cap Co.	133 Sparks St.	Ottawa
Imperial Hat and Cap Co.	220 Simcoe St.	Toronto 2.
Jochimeck-Drone Hat Co. Ltd.	34 Huskisson St.	Guelph.
Felts and Velour Ltd.	124 Wellington W.	Toronto 2.
Laurel Hat Co.	312 Adelaide W.	Toronto
The Pearl Hat Co.	126 Wellington W.	Toronto 2.
Ritz Hat Co. Ltd.	108 Wellington St. W.	Toronto 2.
Service Hat Lining Co.	126 Wellington St. W.	Toronto 2.
Stirling Headwear Ltd.	243 Queen St. W.	Toronto 2.
Travers Aprons Ltd.	308 Sparks St.	Ottawa
Ontario Cap Co.	116 Spadina Ave.	Toronto
Royal Hat & Cap Co.	78 York St.	Toronto 2.
Standard Hat Co. Ltd.	71-73 York St.	Toronto 2.
Canton Hat Co. Ltd.	71-73 York St.	Toronto 2.
Geo R. Cole	Birks Bldg., Sparks St.	Ottawa.
Biltmore Hats Ltd.	62 Yarmouth St.	Guelph
The Rogers Frankfort Co. Ltd.	317 Adelaide St. W.	Toronto 2.

MANITOBA

The Echlin Mfg. Co.	592 Notre Dame St.	Winnipeg.
New York Brand Cap	130 Princess St.	Winnipeg.
Western Hat Mfg. Co. Ltd.	902 Home St.	Winnipeg.
Medzor and Herman	King Bldg.	Winnipeg
Singer Headwear Mfg. Co.	105 Princess St.	Winnipeg.
Buffalo Cap Mfg. Co. Ltd.	3rd Floor Daylite Bldg.	Winnipeg.
Dobbs Cap Mfg. Co.	Sixth Floor, Peck Bldg.	Winnipeg.

SASKATCHEWAN

Regina Hat Mfg. Co.	1806 Creamery Bldg. Albert St.	Regina.
---------------------	-----------------------------------	---------

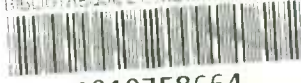
ALBERTA

Calgary Hat Works	1208 First St. W.	Calgary.
Winner Cap Mfg. Co. Ltd.	1403 - Ninth Ave. E.	Calgary..
L. W. Caldwell and Co. Ltd.	210 - Ninth Ave. W.	Calgary.
Regal Cap Mfg. Co.	9626 - 111 Avenue.	Edmonton

BRITISH COLUMBIA

Linforth Hat Mfg. Co.	344 Abbott St.	Vancouver.
-----------------------	----------------	------------

STATISTICS CANADA LIBRARY
BIBLIOTHÈQUE STATISTIQUE CANADA



1010758664