

CATALOGUE No.

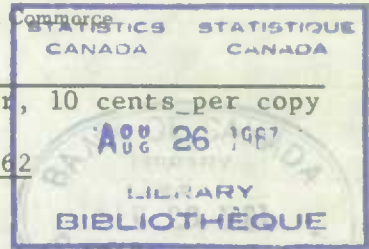
35-001

MONTHLY

# DOMINION BUREAU OF STATISTICS

OTTAWA - CANADA

Published by Authority of the Minister of Trade and Commerce



Vol. 10, No. 12

Price: \$1.00 per year, 10 cents per copy

## PEELER LOGS, VENEERS AND PLYWOODS, DECEMBER 1962

Deliveries, consumption and stocks of peeler logs in December 1962 amounted to 58,957, 55,060 and 100,486 M bd. ft. respectively as compared to 43,224, 47,086 and 99,601 in December 1961 and 49,456, 56,497 and 96,404 reported in November 1962.

Veneers totalled 102,275 M sq. ft. for production, 104,074 for shipments and 71,361 for stocks as against 52,673, 54,804 and 86,330 the corresponding month last year and 91,682, 96,249 and 73,160 in November 1962.

Total production of plywoods was 171,811 M sq. ft., shipments 170,608 and stocks 107,283 as compared to 149,004, 148,734 and 97,631 in December a year ago and 174,204, 167,268 and 105,891 in the past month.

Table 1 gives a comparative summary of deliveries, consumption and stocks of peeler logs, while Table 2 gives details of veneer production, shipments and stocks. Particulars of plywood are given in Table 3.

TABLE 1. Peeler Logs

		Delivered to mill	Con- sumption	Stocks at end of month	Delivered to mill	Con- sumption	Stocks at end of month
		thousand feet board measure					
Domestic softwoods:		Douglas fir			Hemlock, spruce and other		
December	1962	37,231	38,217	71,674	6,610	4,334	10,926
December	1961	27,984	31,244	72,283	3,970	5,476	4,583
November	1962	37,259	38,702	72,660	4,474	6,147	8,619
November	1961	34,932	37,414	75,740	4,973	5,078	6,225
12 months,	1962	454,699	453,622	71,674	70,334	64,852	10,926
12 months,	1961	389,830	420,345	72,283	47,669	55,241	4,583
Domestic hardwoods:		Birch (yellow and white)			Maple		
High density:							
December	1962	8,079	6,700	10,363	588	618	1,311
December	1961	4,667	5,079	10,065	617	655	1,408
November	1962	4,139	6,494	8,978	378	376	1,341
November	1961	2,293	4,673	10,481	420	590	1,451
12 months,	1962	77,480	77,227	10,363	5,344	5,153	1,311
12 months,	1961	61,096	63,916	10,065	4,713	5,339	1,408

Industry and Merchandising Division

March 1963  
6513-503

TABLE 1. Peeler Logs - Concluded

		Delivered to mill	Con- sumption	Stocks end of month	Delivered to mill	Con- sumption	Stocks end of month
thousand feet board measure							
<b>Domestic hardwoods:</b>							
<b>High density:</b>		<b>Elm</b>			<b>Other (1)</b>		
December	1962	863	667	1,164	125	140	909
December	1961	196	188	902	40	60	816
November	1962	172	284	969	76	171	923
November	1961	194	210	894	31	58	841
12 months,	1962	3,240	2,957	1,164	1,443	1,322	909
12 months,	1961	2,171	2,020	902	1,330	960	816
<b>Poplar (incl. aspen &amp; cottonwood)</b>				<b>Basswood</b>			
<b>Low density:</b>							
December	1962	4,182	3,546	3,355	412	158	493
December	1961	5,506	3,828	8,816	105	414	312
November	1962	2,748	4,108	2,539	58	85	239
November	1961	5,069	4,396	7,144	104	120	622
12 months,	1962	46,351	51,156	3,355	3,120	2,864	493
12 months,	1961	47,782	46,415	8,816	1,916	2,007	312
<b>Other</b>				<b>Imported woods: Mahogany, oak, walnut, etc.</b>			
December	1962	4	-	4	863	680	287
December	1961	-	-	90	139	142	326
November	1962	-	-	32	152	130	104
November	1961	-	-	90	136	184	365
12 months,	1962	62	84	4	2,441	2,469	287
12 months,	1961	59	12	90	1,613	1,449	326

See footnote at end of page 4.

TABLE 2. Veneers for Sale as Such

		Not over 1/20" thick			Over 1/20" thick			
Produc- tion		Shipments		Stocks end of month	Produc- tion	Shipments		Stocks end of month
		Domestic	Export			Domestic	Export	
thousand square feet								
<b>Domestic softwoods:</b>				<b>Douglas fir</b>				
December	1962	-	-	-	6,580	6,580	-	-
December	1961	-	-	-	2,585	2,565	-	152
November	1962	-	-	-	1,238	1,238	-	-
November	1961	-	-	-	2,982	2,966	-	132
12 months,	1962	-	-	-	24,787	24,614	732	-
12 months,	1961	-	-	-	19,077	18,388	581	152
				<b>Hemlock, spruce &amp; other</b>				
December	1962	447	171	276	10,518	3,271	7,297	2,362
December	1961	603	203	400	1,617	340	1,276	832
November	1962	745	248	497	11,346	4,815	6,426	2,412
November	1961	356	356	-	2,008	344	1,617	831
12 months,	1962	8,424	5,202	3,222	106,648	37,132	71,904	2,362
12 months,	1961	7,807	4,912	2,895	19,384	2,977	16,683	832



TABLE 2. Veneers for Sale as Such - Concluded

		Not over 1/20" thick			Over 1/20" thick				
		Shipments		Stocks end of month	Produc- tion	Shipments		Stocks end of month	
Produc- tion		Domestic	Export			Domestic	Export		
thousand square feet									
<u>Domestic hardwoods:</u>									
<u>High density:</u>		<u>Birch (yellow and white)</u>							
December	1962	70,660	24,864	47,860	49,811	3,698	3,085	509	901
December	1961	39,980	13,685	28,703	69,916	1,190	107	709	1,442
November	1962	66,330	15,754	56,081	51,875	4,369	3,998	339	797
November	1961	40,732	14,671	32,330	72,327	1,913	273	1,691	1,066
12 months,	1962	760,639	220,496	560,200	49,811	50,634	38,451	12,612	901
12 months,	1961	599,699	177,664	434,748	69,916	18,501	3,832	14,107	1,442
<u>Maple</u>									
December	1962	1,052	243	800	1,656	1,431	337	1,077	75
December	1961	324	227	197	1,467	1,090	311	746	110
November	1962	690	439	332	1,647	1,136	562	590	58
November	1961	1,620	1,062	661	1,567	1,383	482	928	77
12 months,	1962	11,811	6,424	5,255	1,656	15,464	6,791	8,692	75
12 months,	1961	5,605	4,670	1,972	1,467	18,519	13,094	5,585	110
<u>Other (2)</u>									
December	1962	912	928	80	915	284	267	-	45
December	1961	185	247	80	843	377	340	9	72
November	1962	205	330	195	1,011	262	251	-	28
November	1961	327	312	-	985	433	373	17	44
12 months,	1962	6,889	5,314	1,503	915	3,129	3,153	3	45
12 months,	1961	4,028	4,512	366	843	3,883	3,759	110	72
<u>Poplar (including aspen and cottonwood)</u>									
December	1962	389	-	-	558	1,280	1,015	-	1,127
December	1961	21	24	-	206	594	498	-	96
November	1962	58	92	-	169	681	622	-	862
November	1961	-	62	-	209	407	586	-	-
12 months,	1962	979	625	2	558	12,814	11,770	-	1,127
12 months,	1961	561	576	-	206	5,627	7,127	-	96
<u>Basswood and other</u>									
December	1962	322	296	-	201	699	742	-	212
December	1961	255	323	-	172	403	92	302	89
November	1962	229	385	-	175	195	191	-	255
November	1961	982	869	-	240	267	271	83	80
12 months,	1962	4,681	4,652	-	201	3,280	3,157	-	212
12 months,	1961	4,679	4,848	-	172	2,994	2,644	413	89
<u>Mahogany, oak, walnut, etc.</u>									
<u>Imported woods:</u>									
December	1962	4,003	3,650	726	13,498	-	-	-	-
December	1961	3,397	2,211	1,157	10,933	52	52	-	-
November	1962	4,198	1,503	1,361	13,871	-	-	-	-
November	1961	3,278	2,430	410	10,904	-	-	-	-
12 months,	1962	43,140	30,175	10,400	13,498	14	14	-	-
12 months,	1961	29,354	22,291	5,431	10,933	519	523	5	-

See footnote at end of page 4.



1010749651

TABLE 3. Plywoods for Sale as Such

	Production	Shipments		Stocks end of month	Production	Shipments		Stocks end of month	
		Domestic	Export			Domestic	Export		
(thousand square feet 1/4" thickness basis) (classified by the type of wood on the best face)									
<b>Domestic softwoods:</b>		<b>Douglas fir</b>			<b>Hemlock, spruce &amp; other</b>				
December	1962	135,584	113,123	23,682	74,631	5,764	4,638	586	8,208
December	1961	116,613	102,362	16,365	69,326	3,013	2,829	-	4,077
November	1962	138,511	110,494	20,994	75,687	8,684	7,396	696	7,668
November	1961	131,847	112,057	15,860	71,752	3,721	3,683	-	4,063
12 months,	1962	1,643,542	1,408,000	229,348	74,621	97,154	89,892	5,923	8,208
12 months,	1961	1,515,726	1,343,624	182,133	69,326	74,017 <sup>r</sup>	74,014 <sup>r</sup>	-	6,031 <sup>r</sup>
<b>Domestic hardwoods:</b>		<b>Birch (yellow &amp; white)</b>			<b>Other(3)</b>				
<b>High density:</b>									
December	1962	11,168	8,164	2,192	12,418	1,292	1,366	13	162
December	1961	9,759	6,949	2,463	6,756	334	294	4	311
November	1962	9,838	6,725	2,744	11,606	315	291	-	249
November	1961	8,478	6,797	2,280	6,412	287	287	-	275
12 months,	1962	114,497	78,800	32,598	12,418	4,523	4,491	132	162
12 months,	1961	89,031	65,788	23,239	6,756	2,882	2,769	33	311
<b>Domestic hardwoods:</b>		<b>Poplar (incl. aspen &amp; cottonwood)</b>			<b>Basswood and other</b>				
<b>Low density:</b>									
December	1962	13,156	11,718	161	9,492	18	64	-	58
December	1961	16,819	15,264	-	15,156	87	95	-	117
November	1962	14,188	15,318	11	8,181	81	79	-	104
November	1961	17,680	15,808	-	13,618	56	56	-	125
12 months,	1962	163,488	165,110	361	9,492	887	931	3	58
12 months,	1961	166,743 <sup>r</sup>	161,819 <sup>r</sup>	36	13,202 <sup>r</sup>	769	777	-	117
<b>Imported woods:</b>		<b>Mahogany</b>			<b>Oak</b>				
December	1962	2,197	2,176	29	1,815	1,111	1,211	15	192
December	1961	904	741	16	1,306	361	231	8	305
November	1962	741	672	-	1,823	121	117	-	307
November	1961	869	665	-	1,159	143	139	-	183
12 months,	1962	9,845	9,170	130	1,815	2,661	2,648	85	192
12 months,	1961	8,350	7,850	79	1,306	1,841	1,655	19	305
		<b>Walnut</b>			<b>Other</b>				
December	1962	1,056	1,020	32	206	465	393	25	111
December	1961	786	783	4	225	328	326	-	52
November	1962	1,177	1,196	-	202	548	535	-	64
November	1961	874	880	-	226	353	357	-	50
12 months,	1962	10,317	10,165	114	206	4,622	4,453	108	111
12 months,	1961	7,852	7,638	35	225	3,063	3,013	17	52

(1) Includes ash, beech, cherry, oak, walnut, etc.

(2) Includes ash, elm, beech, cherry, oak, walnut, etc.

(3) Includes maple, ash, elm, beech, cherry, oak, walnut, etc.

<sup>r</sup> Revised figures.