

DOMINION BUREAU OF STATISTICS

OTTAWA - CANADA

Published by Authority of the Minister of Trade and Commerce

Vol. 11, No. 4

Price: \$1.00 per year, 10 cents per copy

PEELER LOGS, VENEERS AND PLYWOODS, APRIL 1963

Deliveries, consumption and stocks of peeler logs in April, 1963 amounted to 61,684, 60,359 and 135,680 M bd. ft. respectively as compared to 52,512, 53,984 and 124,661 in April, 1962 and 69,581, 58,266 and 134,547 reported in March, 1963.

Veneers totalled 97,662 M sq. ft. for production, 102,252 for shipments and 73,066 for stocks as against 89,878, 90,594 and 82,849 the corresponding month last year and 106,331, 107,322 and 74,455 in March, 1963.

Total production of plywoods was 185,908 M sq. ft., shipments 180,756 and stocks 165,539 as compared to 164,724, 178,643 and 144,991 in April a year ago and 186,913, 187,425 and 160,484 in the past month.

Table 1 gives a comparative summary of deliveries, consumption and stocks of peeler logs, while Table 2 gives details of veneer production, shipments and stocks. Particulars of plywood are given in Table 3.

TABLE 1. Peeler Logs

		Delivered to mill	Con- sumption	Stocks at end of month	Delivered to mill	Con- sumption	Stocks at end of month
thousand feet board measure							
Domestic softwoods:		Douglas fir			Hemlock, spruce and other		
April	1963	46,849	39,693	72,124	7,791	8,671	17,033
April	1962	36,855	36,575	63,529	7,252	5,087	15,236
March	1963	37,940	38,628	64,968	7,607	6,727	18,113
March	1962	39,198	40,115	63,351	5,197	5,208	13,095
4 months,	1963	157,977	157,528	72,124	36,690	30,495	17,033
4 months,	1962	139,770	148,421	63,529	31,662	20,985	15,236
Domestic hardwoods:		Birch (yellow and white)			Maple		
High density:							
April	1963	3,385	6,557	29,037	582	680	2,934
April	1962	4,353	6,904	26,362	262	321	1,641
March	1963	12,594	6,991	32,209	1,320	815	3,033
March	1962	10,619	6,390	28,770	444	433	1,700
4 months,	1963	45,667	27,004	29,037	4,366	2,755	2,934
4 months,	1962	41,223	25,097	26,362	1,915	1,690	1,641

June 1963
6513-503

Industry and Merchandising Division

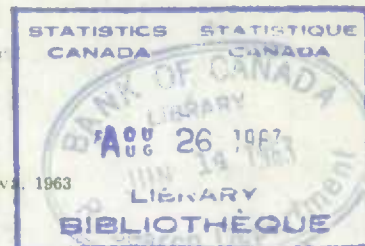


TABLE 1. Peeler Logs - Concluded

		Delivered to mill	Con- sumption	Stocks at end of month	Delivered to mill	Con- sumption	Stocks at end of month
thousand feet board measure							
Domestic hardwoods:							
High density:		Elm			Other (1)		
April	1963	159	247	1,374	79	172	1,404
April	1962	282	276	1,261	123	52	1,205
March	1963	334	206	1,461	223	88	1,496
March	1962	293	134	1,255	192	132	1,134
4 months,	1963	1,000	786	1,374	916	413	1,404
4 months,	1962	1,159	799	1,261	777	390	1,205
		Poplar (incl. aspen & cottonwood)			Basswood		
Low density:							
April	1963	2,584	3,913	9,937	139	270	1,441
April	1962	2,884	4,265	14,207	257	351	780
March	1963	8,869	4,482	11,258	456	177	1,572
March	1962	6,532	4,201	15,720	581	388	921
4 months,	1963	22,827	15,824	9,937	1,633	681	1,441
4 months,	1962	22,163	16,651	14,207	1,864	1,398	780
		Other			Imported woods: Mahogany, oak, walnut, etc.		
April	1963	-	-	-	116	156	396
April	1962	8	25	33	236	128	407
March	1963	-	1	-	238	151	437
March	1962	8	32	50	183	183	298
4 months,	1963	2	6	-	682	569	396
4 months,	1962	22	79	33	630	619	407

TABLE 2. Veneers for Sale as Such

		Not over 1/20" thick				Over 1/20" thick			
		Produc- tion	Shipments		Stocks end of month	Produc- tion	Shipments		Stocks end of month
			Domestic	Export			Domestic	Export	
thousand square feet									
Domestic softwoods:									
		Douglas fir							
April	1963	-	-	-	-	1,263	951	312	-
April	1962	-	-	-	-	500	500	-	160
March	1963	-	-	-	-	2,349	2,349	-	-
March	1962	-	-	-	-	898	843	13	160
4 months,	1963	-	-	-	-	15,324	15,012	312	-
4 months,	1962	-	-	-	-	4,418	4,292	115	160
		Hemlock, spruce & other							
April	1963	775	279	496	-	11,485	3,414	8,991	2,675
April	1962	965	783	182	-	3,532	432	3,000	824
March	1963	1,002	692	310	-	11,665	2,396	10,386	393
March	1962	894	453	441	-	3,044	414	2,653	724
4 months,	1963	3,152	1,710	1,442	-	47,073	13,608	36,154	2,675
4 months,	1962	3,612	2,114	1,498	-	11,476	1,863	9,621	824

See footnote at end of page 4

TABLE 2. Veneers for Sale as Such - Concluded

		Not over 1/20" thick			Over 1/20" thick				
		Produc- tion	Shipments		Stocks end of month	Produc- tion	Shipments		Stocks end of month
			Domestic	Export			Domestic	Export	
		thousand square feet							
Domestic hardwoods:		Birch (yellow and white)(2)							
<u>High density:</u>									
April	1963	69,888	21,687	50,346	52,439	4,789	3,817	884	705
April	1962	64,594	15,994	49,664	65,433	12,908	10,691	998	2,247
March	1963	76,603	31,161	44,439	54,587	5,185	4,168	1,495	617
March	1962	64,551	21,417	46,872	66,495	1,119	179	898	1,028
4 months,	1963	282,699	101,018	183,365	52,439	20,488	15,461	5,223	705
4 months,	1962	240,815	71,586	173,714	65,433	16,397	11,111	4,481	2,247
		Maple							
April	1963	2,015	496	1,528	1,559	1,342	760	566	146
April	1962	611	248	697	1,801	1,112	483	589	182
March	1963	2,330	839	1,755	1,567	1,465	650	807	130
March	1962	1,474	230	694	2,135	1,171	332	793	142
4 months,	1963	9,552	2,906	6,729	1,559	5,794	2,656	3,067	146
4 months,	1962	2,827	974	1,529	1,801	4,748	2,394	2,266	182
		Other(2)							
April	1963	399	506	390	419	219	215	-	59
April	1962	545	232	316	984	196	196	-	77
March	1963	228	145	128	916	164	193	-	55
March	1962	430	400	-	987	144	138	-	77
4 months,	1963	1,693	1,181	1,008	419	907	893	-	59
4 months,	1962	1,993	1,423	429	984	964	956	3	77
		Poplar (incl. aspen & cottonwood)							
<u>Low density:</u>									
April	1963	127	17	-	446	522	592	-	362
April	1962	-	73	-	68	1,368	846	-	765
March	1963	-	107	-	336	595	745	-	431
March	1962	26	64	-	141	1,141	1,167	-	243
4 months,	1963	127	239	-	446	2,124	2,890	-	362
4 months,	1962	118	256	-	68	4,230	3,561	-	765
		Basswood & Other							
April	1963	1,065	808	-	389	263	203	-	219
April	1962	496	211	-	504	67	141	-	70
March	1963	322	418	-	132	179	230	-	159
March	1962	416	405	-	219	262	282	-	144
4 months,	1963	2,280	2,088	-	389	957	950	-	219
4 months,	1962	1,570	1,238	-	504	1,044	1,063	-	70
		Mahogany, oak, walnut, etc.							
<u>Imported woods:</u>									
April	1963	3,510	2,699	2,295	13,648	-	-	-	-
April	1962	2,984	2,776	1,542	9,734	-	-	-	-
March	1963	4,244	2,561	1,348	15,132	-	-	-	-
March	1962	3,860	2,260	1,128	11,068	-	-	-	-
4 months,	1963	15,813	9,356	6,307	13,648	-	-	-	-
4 months,	1962	12,526	10,008	3,717	9,734	4	4	-	-

See footnote at end of page 4.



1010749659

TABLE 3. Plywoods for Sale as Such

	Production	Shipments		Stocks end of month	Production	Shipments		Stocks end of month	
		Domestic	Export			Domestic	Export		
(thousand square feet 1/4" thickness basis) (classified by the type of wood on the best face)									
Domestic softwoods:									
		Douglas fir				Hemlock, spruce & other			
April	1963	148,205	122,993	19,714	129,077	13,020	11,247	753	11,846
April	1962	134,312	127,925	17,798	114,605	7,850	9,102	646	8,215
March	1963	145,556	130,348	14,488	123,576	11,758	12,405	708	10,827
March	1962	144,428	118,214	13,034	126,299	7,894	6,383	-	10,208
4 months,	1963	574,586	455,650	64,444	129,077	50,967	44,059	2,867	11,846
4 months,	1962	535,920	433,457	56,989	114,605	31,137	28,494	646	8,215
		Birch (yellow & white)				Other(3)			
Domestic hardwoods:									
<u>High density:</u>									
April	1963	9,311	6,666	3,116	13,526	199	121	15	273
April	1962	8,924	5,695	3,407	9,903	272	268	23	224
March	1963	10,242	6,702	3,002	13,997	248	188	21	209
March	1962	10,457	6,949	2,516	8,081	259	318	-	243
4 months,	1963	38,456	26,277	11,071	13,526	736	553	68	273
4 months,	1962	36,195	23,728	10,892	9,903	1,224	1,216	45	224
		Poplar				Basswood & other			
Domestic hardwoods:									
<u>Low density:</u>									
		(incl. aspen & cottonwood)							
April	1963	13,201	13,928	77	8,145	115	115	-	68
April	1962	11,170	11,617	-	9,787	61	69	-	99
March	1963	16,468	17,017	162	9,049	96	72	-	68
March	1962	13,047	15,138	-	10,221	76	80	-	107
4 months,	1963	55,424	56,030	553	8,145	336	326	-	68
4 months,	1962	49,197	52,065	-	9,787	302	308	-	99
		Mahogany				Oak			
Imported woods:									
April	1963	442	456	102	1,921	243	236	12	230
April	1962	698	675	22	1,620	131	128	5	305
March	1963	709	501	13	2,037	296	294	-	235
March	1962	597	485	-	1,619	121	82	46	307
4 months,	1963	2,226	1,980	140	1,921	1,018	952	29	230
4 months,	1962	2,741	2,357	34	1,620	661	563	56	305
		Walnut				Other			
April	1963	724	732	9	321	448	455	9	132
April	1962	861	834	6	141	445	414	9	92
March	1963	1,093	1,036	4	338	447	450	14	148
March	1962	605	627	6	120	256	252	9	70
4 months,	1963	3,402	3,334	13	321	1,736	1,692	23	132
4 months,	1962	3,016	3,012	30	141	1,565	1,470	55	92

(1) Includes ash, beech, cherry, oak, walnut, etc.

(2) Includes ash, elm, beech, cherry, oak, walnut, etc.

(3) Includes maple, ash, elm, beech, cherry, oak, walnut, etc.