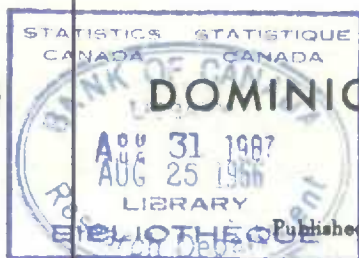


CATALOGUE No.

35-003

MONTHLY



## DOMINION BUREAU OF STATISTICS

OTTAWA - CANADA

Published by Authority of the Minister of Trade and Commerce

Vol. 20, No. 5

Price: 20 cents, \$2.00 a year

PRODUCTION, SHIPMENTS AND STOCKS ON HAND OF SAWMILLS  
IN BRITISH COLUMBIA

MAY 1966

TABLE 1. Summary of Production, Shipments and Stocks on Hand of Lumber and Ties(1)

	May		Five months ended May	
	MM ft. b.m.	% change 1965/66	MM ft. b.m.	% change 1965/66
<u>British Columbia</u>				
Total production .....	602.1	+ 13.8	2,956.1	+ 5.4
Total shipments (unduplicated) ..	666.3	+ 6.5	3,019.1	+ 11.0
Total stocks at end of month ....	917.4	...	...	...
<u>Coastal mills:</u>				
Total production .....	334.1	+ 14.1	1,602.0	+ 7.8
Total shipments (unduplicated)	347.5	+ 10.5	1,664.2	+ 12.2
Total stocks at end of month ..	409.5	...	...	...
Reported orders on hand .....	684.9	+ 9.8	...	...
<u>Interior mills:</u>				
Total production .....	268.0	+ 13.5	1,354.1	+ 2.7
Total shipments (unduplicated)	318.8	+ 2.5	1,354.9	+ 9.6
Total stocks at end of month ..	507.9	...	...	...
	May		Five months ended May	
	1965	1966	1965	1966

per cent

Percentage of total production  
estimated:

British Columbia .....	11.3	7.2	13.1	9.4
Coastal mills .....	2.6	0.7	2.5	0.6
Interior mills .....	22.1	17.2	25.0	19.8

(1) For detailed data see Tables 2 to 7 in this report.

... Figures not appropriate or not applicable.

Note: Data in this report may not necessarily balance due to rounding.

July 1966  
6507-703

Industry Division

ROGER DUNAMEL, F.R.S.C., Queen's Printer and Controller of Stationery, Ottawa

### British Columbia Sawmills

All mills producing more than 500,000 board feet per year are asked to co-operate in this survey. In 1963 this category accounted for 99.8% of the total production of lumber and ties in the Coastal area and 99.3% in the Interior. The estimates of production of the non-reporting mills are based on the production of the reporting mills and the ratio between the production of the non-reporting mills and the reporting mills in the base year (1963). The stocks are estimated on the basis of data reported by the reporting mills for the month under review. The species distribution for the non-reporting mills in the current period has been assumed to be the same as it was in the base year.

The figures for "estimated shipments and adjustments" are arrived at by deducting the shipments (sales only) as reported by sawmills from the apparent total of unduplicated shipments of sawmills (total production plus or minus the change in total inventory of sawmills). Thus it includes all non-reported sawmill shipments, adjustments for duplication in the shipments (sales) reported by sawmills and inventory adjustments. Duplication in the reported shipments (sales) occurs when lumber is sold by one reporting sawmill to another reporting sawmill. Such sales are shown in Table 7 of this report.

To improve the distribution of shipments by destination (Table 3) the planing mills in B.C. have been asked, beginning in 1966, to report shipments (sales) by destination. On the assumption that the lumber, purchased by these planing mills, was purchased from reporting sawmills in B.C. and to avoid duplication, the shipments to points in B.C. as reported by the sawmills has been reduced by the shipments to points outside B.C. as reported by the planing mills. Nevertheless the reported destinations are not necessarily the final destinations and the modes of transportation apply only to first destination shipments as reported by sawmills and, to a limited extent, planing mills.

The co-operation of the British Columbia Lumber Manufacturers' Association, Interior Lumber Manufacturers' Association and Northern Interior Lumbermen's Association in the collection of these statistics is gratefully acknowledged.

TABLE 2. Comparative Summary of Production, Shipments (Sales) and Stocks of Lumber and Ties of British Columbia Sawmills

Species	May		Five months ended May	
	1965	1966	1965	1966
MM ft. b.m.				
<u>Production</u>				
Douglas fir .....	172.6	175.8	846.3	765.9
Hemlock .....	145.0	175.4	782.2	890.6
Red cedar .....	64.2	71.7	314.6	342.3
Spruce .....	110.2	134.5	683.2	727.4
All other softwoods .....	36.8	44.4	176.8	228.5
Total softwoods .....	528.8	601.8	2,803.1	2,954.7
Total hardwoods .....	0.3	0.3	1.3	1.4
Total production .....	529.1	602.1	2,804.4	2,956.1
<u>Shipments</u>				
Reported to:				
Points in Canada .....	128.7	124.0	636.6	568.0
Points in U.S.A. ....	271.4	377.1	1,187.3	1,664.8
United Kingdom .....	46.5	44.8	292.0	231.8
Other Countries .....	76.1	54.3	260.0	283.1
Totals .....	522.7	600.2	2,375.9	2,747.7
Estimated shipments and adjustments .....	102.9	66.1	343.9	271.4
Total shipments .....	625.6	666.3	2,719.8	3,019.1
<u>Stocks on hand(1)</u>				
Douglas fir .....	237.6	193.4	...	...
Hemlock .....	244.2	224.9	...	...
Red cedar .....	103.3	99.2	...	...
Spruce .....	269.5	320.0	...	...
All other softwoods .....	88.5	79.5	...	...
Total softwoods .....	943.1	917.0	...	...
Total hardwoods .....	0.7	0.4	...	...
Total stocks .....	943.8	917.4	...	...

(1) The inventory figures for May 1966 include the inventories of a number of planing mills that were not included previously.

... Figures not appropriate or not applicable.

TABLE 3. Shipments (Sales) of Sawn Lumber and Ties, Coast Mills, May 1966

	By truck and local sales	By rail	Water- borne	Total shipments
M ft.b.m.				
<u>Reported shipments</u>				
To: Points in Canada:				
British Columbia .....	47,541	983	100	48,624
Yukon and Northwest Territories	-	-	-	-
Alberta .....	30	1,756	...	1,786
Saskatchewan .....	-	886	...	886
Manitoba .....	-	2,345	...	2,345
Ontario .....	-	6,448	-	6,448
Quebec .....	-	3,631	-	3,631
New Brunswick .....	-	232	-	232
Nova Scotia .....	-	238	-	238
Prince Edward Island .....	-	21	-	21
Newfoundland .....	-	112	-	112
Total for Canada .....	47,571	16,652	100	64,323
Points in U.S.A.:				
Pacific Ports .....	1,269	1,519	15,438	18,226
Atlantic Ports .....	...	2,904	127,778	130,682
Other points .....	358	38,336	...	38,694
Total for U.S.A. ....	1,627	42,759	143,216	187,602
United Kingdom .....	...	627(1)	41,012	41,639
Other countries .....	...	44(1)	53,909	53,953
Total reported shipments ..	49,198	60,082	238,237	347,517
Estimated shipments and adjustments .....	-			
Total reported and estimated shipments .....	347,517			

(1) Shipped by rail to Eastern and/or Western seaboard ports.

... Figures not appropriate or not applicable.



TABLE 4. Shipments (Sales) of Sawn Lumber and Ties, Interior Mills, May 1966

	By truck and local sales	By rail	Water- borne	Total shipments
M ft. b.m.				
<u>Reported shipments</u>				
To: Points in Canada:				
British Columbia .....	7,209	1,948	-	9,157
Yukon and Northwest Territories .....	205	76	-	281
Alberta .....	4,737	10,967	...	15,704
Saskatchewan .....	633	7,127	...	7,760
Manitoba .....	244	5,411	...	5,655
Ontario .....	270	18,542	147	18,959
Quebec .....	-	2,066	-	2,066
New Brunswick .....	-	-	-	-
Nova Scotia .....	-	91	-	91
Prince Edward Island .....	-	-	-	-
Newfoundland .....	-	-	-	-
Total for Canada .....	13,298	46,228	147	59,673
Points in U.S.A.:				
Pacific Ports .....	483	2,629	-	3,112
Atlantic Ports .....	...	18,255	-	18,255
Other points .....	2,763	165,385	...	168,148
Total for U.S.A. ....	3,246	186,269	...	189,515
United Kingdom .....	...	2,786(1)	340	3,126
Other countries .....	...	362(1)	-	362
Total reported shipments ..	16,544	235,645	487	252,676
Estimated shipments and adjustments .....				66,126
Total reported and estimated shipments .....				318,802

(1) Shipped by rail to Eastern and/or Western seaboard ports.

... Figures not appropriate or not applicable.

TABLE 5. Production and Stocks of Lumber and Ties, May 1966

Species	Coast mills			Interior mills		
	Reported	Estimated	Total	Reported	Estimated	Total
MM ft. b.m.						
<u>Lumber and ties sawn</u>						
Douglas fir .....	89.6	0.9	90.5	64.9	20.3	85.2
Hemlock .....	166.7	0.4	167.1	7.0	1.3	8.3
Red cedar .....	54.6	0.5	55.1	15.8	0.8	16.6
Spruce .....	11.6	0.1	11.7	105.5	17.3	122.8
All other softwoods .....	9.2	0.3	9.5	28.6	6.4	35.0
Total softwoods .....	331.7	2.2	333.9	221.8	46.1	267.9
Total hardwoods .....	0.2	-	0.2	-	0.1	0.1
Total softwoods and hardwoods .....	331.9	2.2	334.1	221.8	46.2	268.0
<u>Stocks of lumber and ties</u>						
Douglas fir .....	112.1	0.2	112.3	69.3	11.8	81.1
Hemlock .....	199.7	0.7	200.4	21.0	3.4	24.4
Red cedar .....	74.3	0.2	74.5	21.0	3.7	24.7
Spruce .....	8.7	0.1	8.8	268.1	43.1	311.2
All other softwoods .....	13.1	0.1	13.2	55.5	10.9	66.4
Total softwoods .....	407.9	1.3	409.2	434.9	72.9	507.8
Total hardwoods .....	0.3	-	0.3	0.1	-	0.1
Total softwoods and hardwoods .....	408.2	1.3	409.5	435.0	72.9	507.9

TABLE 6. Comparative Summary of Distribution of Lumber Orders on Hand reported by Coast Mills

	May	
	1965	1966
M ft. b.m.		
<u>Orders on hand</u>		
For shipments to points in British Columbia:		
Local .....	28,159	32,581
Coastwise and interior .....	2,836	3,614
Totals .....	30,995	36,195
For shipments by rail and truck to:		
Prairie Provinces .....	6,145	5,703
Eastern Provinces .....	12,601	14,234
United States .....	50,301	46,995
Totals .....	69,047	66,932
For waterborne shipments to:		
California .....	2,129	3,600
U.S. Atlantic Ports .....	122,314	232,627
Eastern markets .....	2,260	4,368
Other export markets .....	397,087	341,171
Totals .....	523,790	581,766
Total orders on hand .....	623,832	684,893

TABLE 7. Purchases and Transfers by Reporting Mills, May 1966

	Coast mills	Interior mills
	M ft. b.m.	
Receipts of reporting mills of custom sawn lumber and ties .....	3,330	4,352
Returns by reporting mills of custom sawn lumber and ties(1) .....	6,035	14,065
Lumber purchased from other mills ....	4,168	14,104

(1) Returned to owners.

TABLE 8. Exports of Softwood Lumber

	April 1966		Four months ended April 1966	
	Quantity	Value	Quantity	Value
	MM ft. b.m.	\$'000	MM ft. b.m.	\$'000
Douglas fir .....	104.0	8,039	388.5	29,231
Western white spruce .....	134.5	9,341	445.4	29,004
Hemlock .....	136.6	10,325	586.1	41,623
Western red cedar .....	44.0	3,799	174.0	14,822

Source: Trade of Canada.

TABLE 9. Industry Selling Price Indexes (1956=100)(1)

	May	
	1965	1966
Lumber mills industry (Canada) .....	102.6 <sup>r</sup>	108.8
Douglas fir, B.C. Coast .....	102.5	109.4
Douglas fir, B.C. Interior .....	109.2	112.2
Spruce, B.C. Interior .....	88.8 <sup>r</sup>	98.8
Hemlock, B.C. Coast .....	100.3	110.2
Cedar .....	129.0	133.9

(1) A complete description of these indexes is contained in "Industry Selling Price Indexes 1956-59" Catalogue No. 62-515.

<sup>r</sup> Revised figures.

STATISTICS CANADA LIBRARY  
BIBLIOTHÈQUE STATISTIQUE CANADA



1010677026