

The first part of the report
 deals with the general
 conditions of the country
 and the progress of the
 work during the year.
 It is followed by a
 detailed account of the
 various expeditions
 and the results obtained.
 The second part of the
 report is devoted to
 the study of the
 geology of the region.
 It contains a description
 of the different
 geological formations
 and the fossils
 which they contain.
 The third part of the
 report is devoted to
 the study of the
 natural history of the
 region. It contains
 a description of the
 various plants and
 animals which are
 found in the country.
 The fourth part of the
 report is devoted to
 the study of the
 natural history of the
 region. It contains
 a description of the
 various plants and
 animals which are
 found in the country.

No.	Name	Locality	Height	Remarks
1
2
3
4
5
6
7
8
9
10
11
12
13
14
15
16
17
18
19
20
21
22
23
24
25
26
27
28
29
30
31
32
33
34
35
36
37
38
39
40
41
42
43
44
45
46
47
48
49
50

Table 3 - EMPLOYEES, SALARIES AND WAGES, 1930 and 1931. concluded.

Provinces	Number of employees				Salaries and employees			
	On salaries		On wages		TOTAL	Salaries	Wages	TOTAL
	Male	Female	Male	Female				
						\$	\$	\$
1931								
Quebec	22	5	86	5	118	59,770	76,854	136,624
Ontario	14	9	153	3	179	60,674	178,300	238,974
CANADA ..	36	14	239	8	297	120,444	255,154	375,598

Table 4 - FUEL USED, 1930 and 1931.

Kinds	Unit of measure	1 9 3 0		1 9 3 1	
		Quantity	Cost at works	Quantity	Cost at works
			\$		\$
Anthracite coal.....	short tons	14	136	6	91
Bituminous coal - Canadian ..	short tons	2,226	17,952	1,493	11,884
Imported ..	short tons	6,268	34,179	9,988	52,335
Lignite coal - Canadian	short tons	2	26
Coke	short tons	30	350
Gas - manufactured	M cuft.	98	84	72	64
Other fuel	-	...	599
Electricity purchased	K.W.H.	1,305,411	11,430	642,948	10,399
TOTAL	-	...	64,380	...	75,149

Table 5 - POWER EMPLOYED, 1930 and 1931.

	1 9 3 0		1 9 3 1	
	Number of units	Total horse power	Number of units	Total horse power
Steam engines and steam turbines	5	377	6	477
Total Primary Power	5	377	6	477
Electric motors run by purchased power	83	581	109	896
Total Power Employed	88	958	115	1,373
Boilers	10	1,130	14	1,155

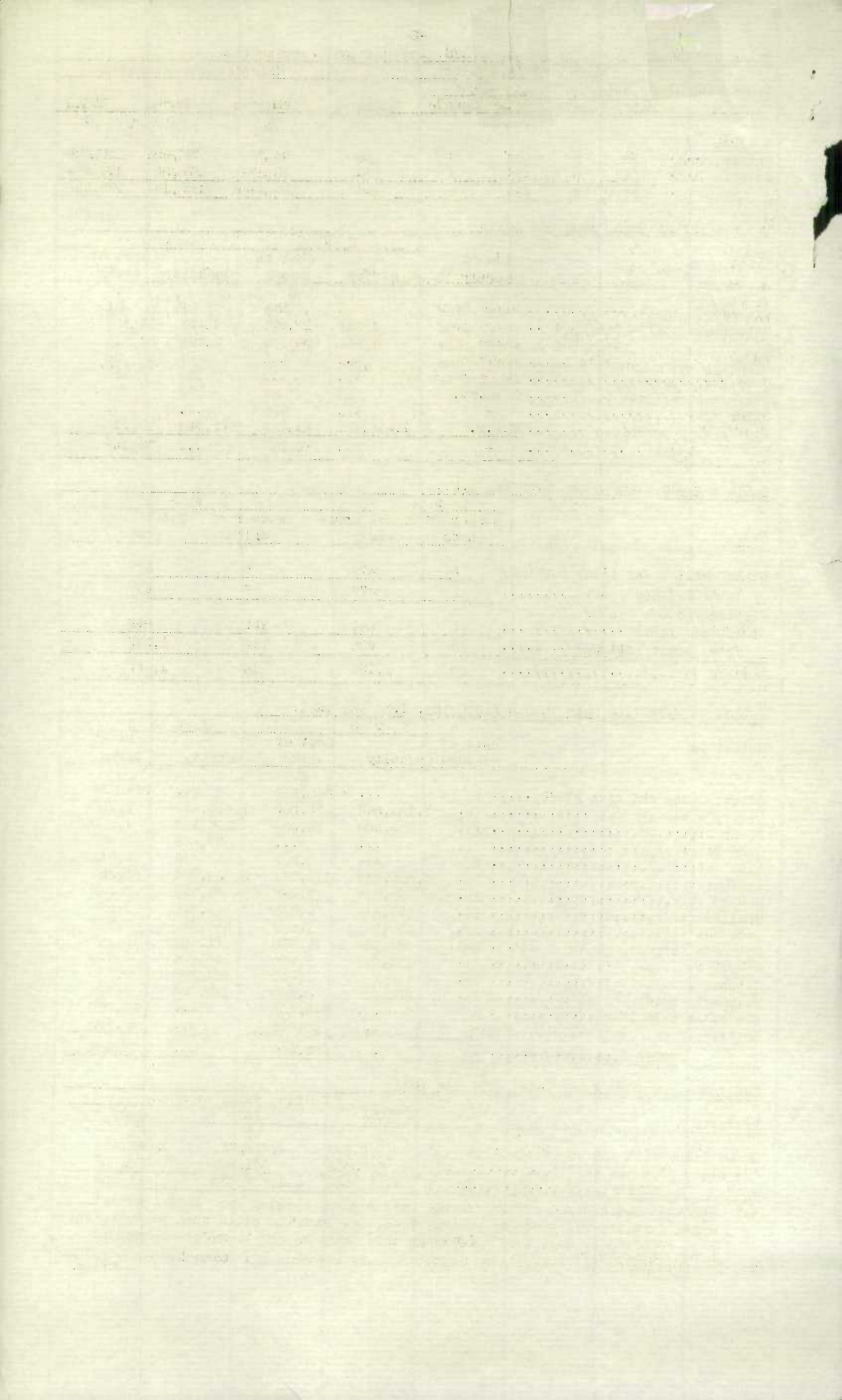
Table 5 - MATERIALS USED IN MANUFACTURING, 1930 and 1931.

Materials	Unit of measure	1 9 3 0		1 9 3 1	
		Quantity	Cost at works	Quantity	Cost at works
			\$		\$
Bones, hides and glue stock	-	...	335,213	...	324,134
Dextrine and glucose	lb.	1,484,243	75,259	1,512,149	72,565
Flour	lb.	339,255	10,934	206,947	4,100
Gums	lb.	27,666	2,867
Lime	ton	614	5,509	476	4,511
Resin	lb.	3,839,817	116,971	3,550,709	65,324
Rubber	lb.	36,057	12,082	61,199	15,362
Shellac	lb.	12,019	5,132	9,000	3,875
Soda ash	lb.	477,245	7,999	467,720	7,272
Solvents (benzol, naphtha, etc.) ..	gal.	64,025	12,878	72,424	15,567
Starch	lb.	173,010	6,926	146,904	5,724
Sulphur	lb.	114,000	1,440	161,285	2,534
Sulphuric acid, 66° Be	lb.	460,000	3,600	182,096	3,899
All other materials	-	...	248,302	...	323,069
Bottles, tops, brushes, boxes, etc.	-	...	40,663	...	26,999
TOTAL	-	...	882,908	...	877,802

Table 6 - PRODUCTS MADE, 1929, 1930 and 1931.

Products	Selling value at works		
	1929	1930	1931
	\$	\$	\$
Bone, hide, fish and vegetable glue (xx)	1,072,293	1,018,731	1,068,968
All other products (x)	758,351	631,903	673,585
TOTAL	1,830,644	1,650,634	1,742,553

(x) Includes resin size, rubber cement, casein glue, sealing wax, paste, grease, mixed fertilizers, tankage, poultry food, fox food and other such products which were reported by only 1 or 2 firms in this industry and therefore cannot be shown separately.
 (xx) In addition to the output here reported there was some glue made in other industries.



DIRECTORY OF FIRMS IN THE ADHESIVES INDUSTRY, 1931.

Note:- The Adhesives Industry includes only the concerns which made adhesives as their main products. Some concerns in other industrial groups made paste, mucilage and glue as minor products but these works are not listed in this directory.

<u>Name of Firm</u>	<u>Location of Plant</u>
Boston Blacking Co. of Canada, Ltd.	1450 Cabot St., Cote St. Paul, Montreal, P.Q.
Bulldog Grip Cement Co. Inc.	2101 Bennett Ave., Montreal, P.Q.
Canada Glue Co. Ltd.	Brantford, Ont.
F. Canac-Marquis, Reg'd.	3 Courcellette St., Quebec, P.Q.
F. E. Woodward & Sons, Ltd.	17th Avenue, Lachine, P.Q.
F. X. Auger	2 rue Garagonthier, St. Malo, P.Q.
Machon Sealing Wax Co.	Rear 47 St. James Ave., Toronto, 5, Ont.
Meredith, Simons & Co. Ltd.	371 Wallace Ave., Toronto, Ont.
Russia Cement Company	2115 Pius IX Ave., Montreal, P.Q.
The Dominion Flour Paste Co.	Rear 2122 $\frac{1}{2}$ Champlain St., Montreal, P.Q.
T. M. Fox and Sons Limited	Cote St. Paul, Montreal, P.Q.
Vera Chemical Co. of Canada, Ltd.	Burlington Junction, Ont.
W. Harris & Co. Limited	200 Keating St., Toronto, 2, Ont.

- - - - -

STATISTICS CANADA LIBRARY
BIBLIOTHÈQUE STATISTIQUE CANADA



1010681701