

46-204 CI

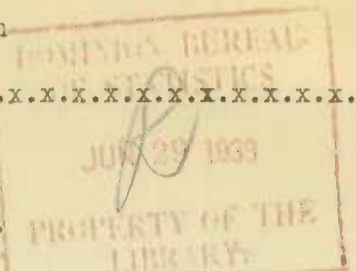
DOMINION BUREAU OF STATISTICS - CANADA
Dominion Statistician: F. H. Coats, B.A., F.S.S. (Hon.), F.R.S.C.

Mining, Metallurgical and Chemical Branch
Chief: W. H. Losec, B.Sc.

XX

CHEMICALS AND ALLIED PRODUCTS

THE COAL TAR DISTILLATION INDUSTRY, 1932.



Ten coal tar distillation plants were in operation in Canada during 1932, there being 1 in Nova Scotia, 2 in Quebec, 4 in Ontario, 2 in Manitoba and 1 in British Columbia. Production in 1932 was valued at \$2,114,650 as compared with \$2,576,102 in 1931. Capital employed was reported at \$5,168,775 of which \$2,569,651 was given as the value of land, buildings, machinery and other equipment. The number of employees was 181 and payments in salaries and wages totalled \$247,133. The cost of crude tar and other materials was \$1,382,425 delivered at the works.

The main products were creosotes, refined tar, road tar, pitch, tarred felts and roofings, and coal tar paints. Phenol, cresol, tar acids, xylenols, and other such tar derivatives were reported for the first time in 1932; these were made in the new works of the Dominion Tar & Chemical Co. Ltd., at Toronto, Ontario.

Imports of crude coal tar amounted to 1,798,535 gallons valued at \$92,613. Imports of pitch were valued at \$11,370 and of carbolic or heavy oil at \$55,973. Exports of coal tar and pitch totalled \$203,126 and shipments to foreign countries of creosote oil were worth \$47,121.

Table 1 - PRINCIPAL STATISTICS OF THE COAL TAR DISTILLATION INDUSTRY IN CANADA, 1928-1932.

Years	Number of distilleries	Capital employed	Average number of employees	Salaries and wages	Cost of materials at works	Selling value of products at works	Value added by manufacturing
		\$		\$	\$	\$	\$
1928 ...	10	4,696,588	210	324,935	2,657,572	4,190,823	1,533,251
1929 ...	10	4,982,333	242	353,970	2,658,555	3,818,050	1,159,495
1930 ...	10	5,042,373	221	325,116	2,318,329	3,334,066	1,015,737
1931 ...	10	5,013,678	193	293,043	1,850,751	2,576,102	725,351
1932 ...	10	5,168,775	181	247,133	1,382,425	2,114,650	732,225

Table 2 - CAPITAL EMPLOYED, 1928-1932.

Years	Value of lands, buildings, machinery and other equipment	Inventory value of materials, fuel and other supplies on hand and stocks in process	Inventory value of finished products on hand	Operating capital (cash, bills and accounts receivable)	TOTAL CAPITAL EMPLOYED
	\$	\$	\$	\$	\$
1928	2,225,029		1,017,438	1,454,121	4,696,588
1929	2,271,632		1,023,065	1,687,636	4,982,333
1930	2,291,601		876,606	1,874,166	5,042,373
1931	2,501,066	383,629	423,582	1,705,401	5,013,678
1932	2,569,651	489,218	573,574	1,536,332	5,168,775

Table 3 - EMPLOYEES, SALARIES AND WAGES, 1928-1932.

Years	NUMBER OF EMPLOYEES			SALARIES AND WAGES		
	On salaries	On wages	TOTAL	Salaries	Wages	TOTAL
				\$	\$	\$
1928	32	178	210	89,611	235,324	324,935
1929	31	211	242	85,116	268,854	353,970
1930	33	188	221	89,412	235,704	325,116
1931	35	158	193	92,346	200,697	293,043
1932	35	146	181	87,628	159,505	247,133

Ms. 204

[Faint, illegible text throughout the page]

Table 4 - WAGE-EARNERS, BY MONTHS, 1931 and 1932.

Months	1931	1932
January	140	135
February	139	130
March	142	132
April	165	143
May	171	164
June	167	163
July	173	140
August	163	157
September	166	149
October	175	156
November	153	161
December	140	134
AVERAGE	158	146

Table 5 - NUMBER OF WAGE-EARNERS IN MONTH OF HIGHEST EMPLOYMENT, ACCORDING TO REGULAR HOURS PER WEEK, 1932. (Overtime not included)

Regular hours worked per week	Number of wage-earners	Regular hours worked per week	Number of wage-earners
44 hours per week	17	55 hours per week	38
45 - 47 hours	55 hours	1
48 hours	56 - 59 hours
49 - 50 hours	38	60 hours	64
51 - 53 hours	Over 60 hours	27

Table 6 - FUEL AND ELECTRICITY USED, 1931 and 1932.

Kinds	Unit of measure	1931		1932	
		Quantity	Cost at works	Quantity	Cost at works
Anthracite coal	short tons	1,418	4,746	1,286	4,410
Bituminous coal - Canadian ..	short tons	2,955	17,344	2,386	12,587
Imported ..	short tons	3,237	18,588	2,067	12,223
Coke	short tons	2,786	10,947	1,912	7,806
Fuel oil	Imp. gal.	309,788	16,720	323,216	14,867
Wood	cord	534	1,764	396	1,245
Other fuel	xx	...	27,853	...	33,183
Electric power	K.W.H.	148,979	3,921	111,836	3,332
TOTAL	xx	...	101,883	...	89,653

Table 7 - POWER EMPLOYED, 1931 and 1932.

Kinds	1931		1932	
	Number of units	Total horse power	Number of units	Total horse power
Steam engines and steam turbines	9	85	8	75
Total Primary Power	9	85	8	75
Electric motors run by purchased power	18	266	18	266
Total Power Employed	27	351	26	341
Total Electric Motors	18	266	18	266
Boilers	13	1,260	13	1,260

Table 8 - IMPORTS INTO CANADA OF COAL TAR AND ITS PRODUCTS, 1931 and 1932.

	Countries from which imported	1931	1932
		Coal tar, crude, in packages of not less than 15 gallons	Total Imports
		\$ 111,341	92,613
	United Kingdom	Gal. 1,750	400
		\$ 359	170
	United States	Gal. 1,590,493	1,798,135
		\$ 110,982	92,443

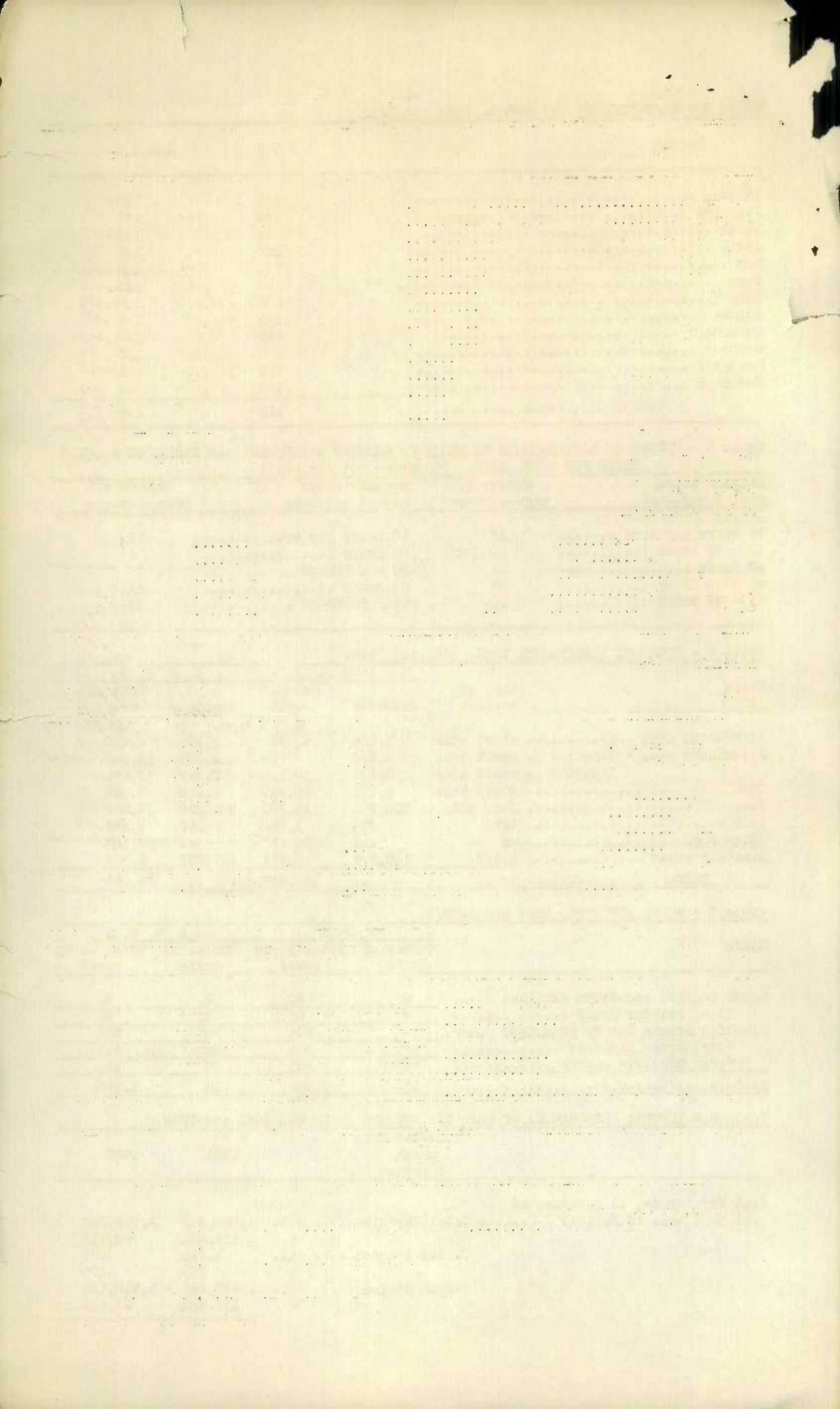


Table 8 - IMPORTS INTO CANADA OF COAL TAR AND ITS PRODUCTS, 1931 and 1932. continued.

		Countries from which imported	1931	1932
Coal pitch	Total Imports	Cwt.	...	9,411
		\$	44,520	11,370
	United Kingdom	Cwt.	...	571
		\$	2,264	1,121
	United States	Cwt.	...	8,840
	\$	40,921	10,249	
Carbolic or heavy oil	Total Imports	Gal.	2,089,020	422,427
		\$	274,955	55,973
	United Kingdom	Gal.	745,670	24,330
		\$	77,296	3,947
	United States	Gal.	825,842	77,473
		\$	143,029	20,687
	Belgium	Gal.	97,500	...
		\$	9,773	...
	Japan	Gal.	...	320,624
	\$...	31,339	
Netherlands	Gal.	420,008	...	
	\$	44,857	...	

Table 9 - EXPORTS FROM CANADA OF COAL TAR AND ITS PRODUCTS, 1931 and 1932.

		Countries of Destination	1931	1932
Tar and pitch, coal	Total Exports	Gal.	2,880,018	3,017,552
		\$	131,129	203,126
	United Kingdom	Gal.	...	962,190
		\$...	73,030
	United States	Gal.	459,187	684,337
		\$	35,923	35,396
	Newfoundland	Gal.	68,880	25,549
	\$	10,941	5,913	
France	Gal.	2,350,383	1,343,355	
	\$	83,906	88,282	
Creosote oil	Total Exports	Gal.	576,477	274,598
		\$	91,698	47,121
	United States	Gal.	576,367	274,488
	\$	91,648	47,065	

DIRECTORY OF COAL TAR DISTILLATION PLANTS IN CANADA, 1932.

The Barrett Company Limited - Head Office - 5551 St. Hubert St., Montreal, P.Q.
 Plants at - Montreal, P.Q.
 Toronto, Ontario
 Winnipeg, Manitoba
 Vancouver, B.C.

Dominion Tar and Chemical Company, Limited - Head Office - 424 Canada Cement Company Bldg., Montreal, P.Q.
 Plants at - Sydney, N.S.
 Ville La Salle, P.Q.
 Toronto, Ontario
 Sault Ste. Marie, Ontario
 St. Boniface, Manitoba.

Currie Products Limited - Head Office - 87 Sheaffe St., Hamilton, Ontario
 Plant at - Hamilton, Ontario.

STATISTICS CANADA LIBRARY
BIBLIOTHÈQUE STATISTIQUE CANADA



1010681818