

47-201

e-2

CANADA
DEPARTMENT OF TRADE AND COMMERCE
DOMINION BUREAU OF STATISTICS
CENSUS OF INDUSTRY

DOMINION BUREAU
OF STATISTICS
NOV 12 1930
PROPERTY OF THE
LIBRARY.

REPORT
on the
BROOM, BRUSH & MOP INDUSTRY
in
CANADA
1929

Published by Authority of the Hon. H. H. Stevens, M.P.,
Minister of Trade and Commerce

• • •
OTTAWA

1930

105-74

DEPARTMENT OF TRADE AND COMMERCE
DOMINION BUREAU OF STATISTICS
CENSUS OF INDUSTRY
OTTAWA - CANADA

Dominion Statistician: R.H. Coats, B.A., F.S.S. (Hon.), F.R.S.C.
Chief, Industrial Census: J.C. Macpherson

THE BROOM, BRUSH AND MOP INDUSTRY IN CANADA, 1929.

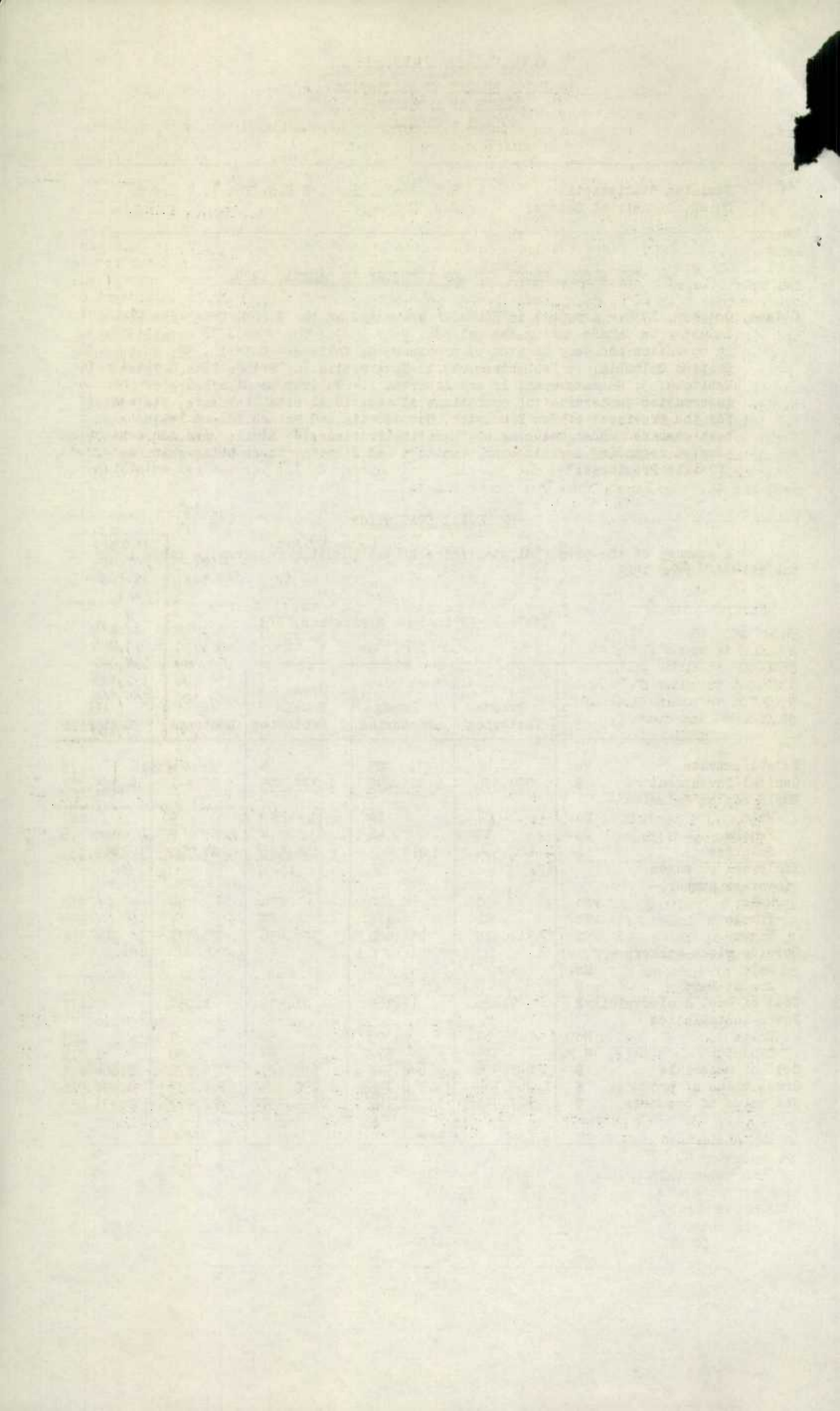
Ottawa, October, 1930.- A report is herewith presented on the Broom, Brush and Mop Industry in Canada during the calendar year 1929. There were 78 establishments in operation and were located by provinces as follows:- Ontario, 39; Quebec, 24; British Columbia, 7; New Brunswick, 1; Nova Scotia, 1; Prince Edward Island, 1; Manitoba, 3; Saskatchewan, 1; and Alberta, 1. To prevent disclosure of information concerning the operations of individual establishments, statistics for the provinces of New Brunswick, Nova Scotia and Prince Edward Island have been combined under the head of "Maritime Provinces." Similar procedure has been adopted regarding Saskatchewan, Manitoba and Alberta, these being shown as "Prairie Provinces."

PRINCIPAL STATISTICS

A summary of the principal statistics of the industry is given in Table 1 for the calendar year 1929.

Table 1.- Principal Statistics, 1929.

		Broom Factories	Brush Factories	Broom & Brush Factories	Mop Factories	All Factories
Establishments	No.	47	23	4	4	78
Capital Investment	\$	1,094,386	1,822,242	1,373,305	95,841	4,385,774
Employees on Salaries -						
Male	No.	57	79	42	9	187
Female	No.	14	46	14	2	76
Salaries	\$	102,364	219,503	146,186	24,790	492,843
Employees on wages (average number)-						
Male	No.	430	240	274	24	968
Female	No.	41	118	88	7	254
Wages	\$	311,525	291,060	326,436	20,377	949,398
Outside piece-workers -						
Male	No.					
Amount Paid	\$					
Cost of fuel & electricity	\$	9,426	11,165	21,531	1,057	43,179
Power installation -						
Units	No.	69	75	50	9	203
Capacity	H.P.	335	572	754	50	1,711
Cost of materials	\$	641,916	648,578	635,527	78,872	2,004,893
Gross value of products	\$	1,269,364	1,776,745	1,290,524	161,293	4,497,926
Net value of products	\$	627,448	1,128,167	654,997	82,421	2,493,033



In view of the tendency towards concentration in industrial enterprises, a series of tables has been prepared presenting in a threefold way the size of establishments in the broom, brush and mop industry measured by (a) capital investment, (b) gross value of production and (c) the number of persons employed, all within certain specified groups or limitations for the calendar years 1928 and 1929. The tables further indicate the movement of capital, production and employment within the industry.

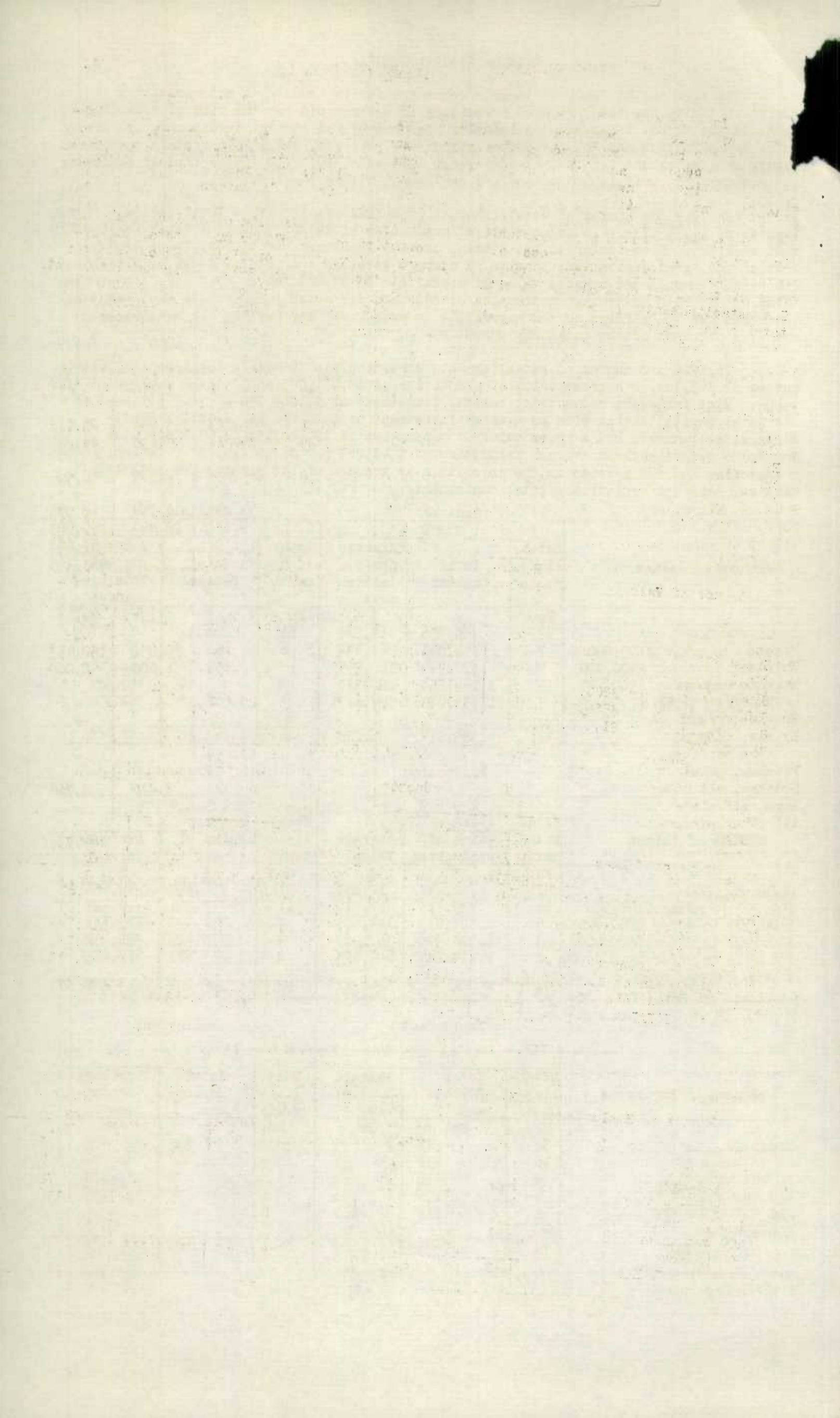
In 1929 the number of establishments reporting was 78 with a total capitalization of \$4,385,774, - a gross value of production of \$4,497,926 and a total employment of 1,485. Nine factories had a total capital investment of \$3,183,375 or 72.6 per cent of the total capitalization with an average investment of \$353,708 per establishment. Ten establishments had a gross value of production of \$3,026,164 or 67.3 per cent of the total output with an average production of \$302,616 per establishment. In employment 6 factories had 704 persons on the payroll, - an average of 117 persons per establishment and 47.4 per cent of the total employment.

In 1928 the number of establishments reporting was 76 with a total capitalization of \$4,363,107, - a gross value of production of \$4,401,045 and a total employment of 1,404. Nine factories had a total capital investment of \$3,064,058 or 70.2 per cent of the total capitalization with an average investment of \$340,451 per establishment. Eight establishments had a gross value of production of \$2,784,185 or 63.2 per cent of the total output with an average production of \$348,023 per establishment. In employment 5 factories had 622 persons on the payroll, - an average of 124 persons per establishment and 44.3 per cent of the total employment.

Groups of Values	Capital 1 9 2 9			Capital 1 9 2 8		
	Estab- lish- ments	Total Capital	Average per es- tablish- ment	Estab- lish- ments	Total Capital	Average per es- tablish- ment
	No.	\$	\$	No.	\$	\$
Under \$50,000	62	758,356	12,232	61	846,314	13,874
\$50,000 to under \$100,000	7	444,043	63,435	6	452,735	75,456
\$100,000 to under \$200,000	2	320,989	160,495	4	672,089	168,022
\$200,000 to under \$500,000	4	1,129,354	282,339	2	703,844	351,922
\$500,000 to under \$1,000,000	3	1,733,032	577,677	3	1,688,125	562,708
\$1,000,000 and over	-	-	-	-	-	-
TOTAL	78	4,385,774	56,228	76	4,363,107	57,409

Groups of Values	Production 1 9 2 9			Production 1 9 2 8		
	Estab- lish- ments	Average value of production	Average Value	Estab- lish- ments	Average value of production	Average Value
	No.	\$	\$	No.	\$	\$
Under \$50,000	57	732,447	12,850	57	836,998	14,684
\$50,000 to under \$100,000	11	739,315	67,210	11	779,861	70,897
\$100,000 to under \$200,000	5	723,013	144,603	2	231,430	115,715
\$200,000 to under \$500,000	3	1,088,906	362,969	4	1,318,929	329,732
\$500,000 to under \$1,000,000	2	1,214,245	607,123	2	1,233,827	616,913
\$1,000,000 and over	-	-	-	-	-	-
TOTAL	78	4,497,926	57,666	76	4,401,045	57,908

Groups of Employees	Employment 1 9 2 9			Employment 1 9 2 8		
	Estab- lish- ments	Total Employ- ees	Average Employ- ees	Estab- lish- ments	Total Employ- ees	Average Employ- ees
	No.	No.	No.	No.	No.	No.
Under 20	56	283	5	58	335	6
20 to under 50	16	498	31	13	447	34
50 but under 100	4	336	84	1	78	78
100 but under 200	1	156	156	4	544	136
200 but under 500	1	212	212	-	-	-
500 and over	-	-	-	-	-	-
TOTAL	78	1,485	19	76	1,404	18



1929.

Production

The quantity and value of the various kinds of brooms, brushes and mops manufactured during the calendar year 1929 is given by provinces in Table II. The total value of production rose from \$4,401,045 in 1928 to \$4,497,926 in 1929, an increase of \$96,881. In order of individual importance in production, brooms occupy the premier position with \$1,481,520 followed by brushes, paint, with \$834,486, whilst brushes made of corn or fibre take third place with \$352,876.

Table II.- Production, by provinces, 1928.

Principal Products	CANADA		Ontario		Quebec			
	Quant.	Value	Quant.	Value	Quant.	Value		
Brooms, all kinds	Doz.	295,829	1,481,520	138,125	703,782	63,912	322,541	
Whisks	"	62,813	116,218	48,979	94,706	7,416	9,032	
Brushes made of hair or bristles	"	43,987	273,949	34,051	182,124	3,139	28,812	
Brushes, tooth	"	37,169	112,903	11,539	28,614	25,630	84,289	
Brushes made of corn or fibre	"	268,678	352,876	240,358	265,631	1,879	6,500	
Brushes, paint	"	232,235	834,486	126,984	415,987	-	-	
Brushes, all other	"	216,929	780,258	172,740	659,144	9,984	19,093	
Mops, all kinds	"	44,154	263,160	18,982	135,377	19,453	106,022	
All other products	-	-	282,556	-	213,702	-	57,076	
TOTAL	-	-	4,497,926	-	2,699,067	-	633,365	
			British Columbia	Maritime Provinces	Prairie Provinces			
			Quant.	Value	Quant.	Value	Quant.	Value
				\$		\$		\$
Brooms	Doz.	30,560	178,254	27,587	124,786	35,652	152,157	
Whisks	"	1,425	2,827	3,953	7,653	1,000	2,000	
Brushes made of hair or bristles	"	983	22,032	5,814	40,981	-	-	
Brushes, tooth	"	-	-	-	-	-	-	
Brushes made of corn or fibre	"	3,640	28,090	22,081	52,655	-	-	
Brushes, paint	"	-	-	105,251	418,499	-	-	
Brushes, all other	"	250	8,000	30,475	85,321	3,480	8,700	
Mops, all kinds	"	753	8,629	4,966	13,132	-	-	
All other products	-	-	6,990	-	4,788	-	-	
TOTAL	-	-	254,822	-	747,815	-	162,857	

Note: Data here given do not necessarily represent the total Canadian production of these commodities, since they are also produced in other industries.

Capital Investment.

The total capital employed in the industry during the calendar year 1929 is shown by provinces in Table III. The total capitalization rose from \$4,363,107 in 1928 to \$4,385,774 in 1929, an increase of \$22,667.

Table III.- Capital employed, by provinces, 1929.

Provinces	Fixed Capital Land, buildings, fixtures, mach- inery, etc.	Working Capital		Total Capital
		Materials on hand, stocks, etc.	Cash, trad- ing & oper- ating accounts	
	\$	\$	\$	\$
CANADA	1,856,987	1,565,216	963,571	4,385,774
Ontario	1,112,844	999,555	607,501	2,719,900
Quebec	260,019	143,309	167,219	570,547
British Columbia	82,021	94,999	44,262	221,282
Maritime Provinces	254,910	261,672	109,912	626,494
Prairie Provinces	147,193	65,681	34,677	247,551

Several lines of faint, illegible text at the top of the page.

A large table with multiple columns and rows, containing very faint and illegible data.

A smaller table at the bottom of the page, also containing faint and illegible data.

Employees, Salaries and Wages.

The number of persons employed in the industry during the calendar year 1929 is given in Table IV by (a) classes of employment, (b) sex and (c) salary on wage payments. The total number of employees in all classes rose from 1,404 in 1928 to 1,485 in 1929, an increase of 81. There was a corresponding increase in the payroll, in 1928 the total being \$1,334,889, whilst the amount reported for 1929 was \$1,442,241, an increase of \$107,352. A further table IV(b) gives the statistics of employment by provinces.

Table IV (a). - Employees, salaries and wages, 1929.

Classes of Employment	Male No.	Female No.	Salaries and Wages \$
Employees on salaries	187	76	492,843
Employees on wages	968	254	949,398
TOTAL	1,155	330	1,442,241

Table IV(b).- Employees, Salaries and Wages, by provinces, 1929.

	Employees on Salaries			Employees on Wages			Totals	
	Male No.	Female No.	Salaries \$	Male No.	Female No.	Salaries \$	Employees No.	Salaries & Wages \$
Ontario	96	50	286,478	490	152	504,810	788	791,288
Quebec	37	12	62,902	211	26	136,720	286	199,622
British Columbia	14	3	31,262	65	9	73,176	91	104,438
Maritime Provinces	30	10	99,709	130	65	184,813	235	284,522
Prairie Provinces	10	1	12,492	72	2	49,879	85	62,371
TOTAL	187	76	492,843	968	254	949,398	1,485	1,442,241

Other Employment Statistics.

The number of days the factory was in operation during the calendar year 1929 together with the number of hours per day or shift and per week normally worked by wage earners is given in Table V(a). The number of wage earners employed in the industry is shown by sex and by months in Table V(b). The maximum number employed was 1,238 in the month of November whilst the minimum number reported was 1,173 in August.

Table V(a).- Days in operation and hours worked, 1929.

Number of establishments in operation	78	
	Total	Average per establishment
Days in operation on full time	20,365	261.09
Days in operation on part time	1,346	17.26
Days idle	2,001	25.65
Hours worked by wage earners per day or shift	664	8.51
Hours worked by wage earners per week	3,723	47.73

Table V(b).- Wage earners by months, 1929.

Months	Male No.	Female No.	Months	Male No.	Female No.
January	941	246	July	944	237
February	944	243	August	930	243
March	974	251	September	954	255
April	963	248	October	963	260
May	969	245	November	973	265
June	960	239	December	964	261
TOTAL				11,479	2,993
Average number employed during the year				968	254

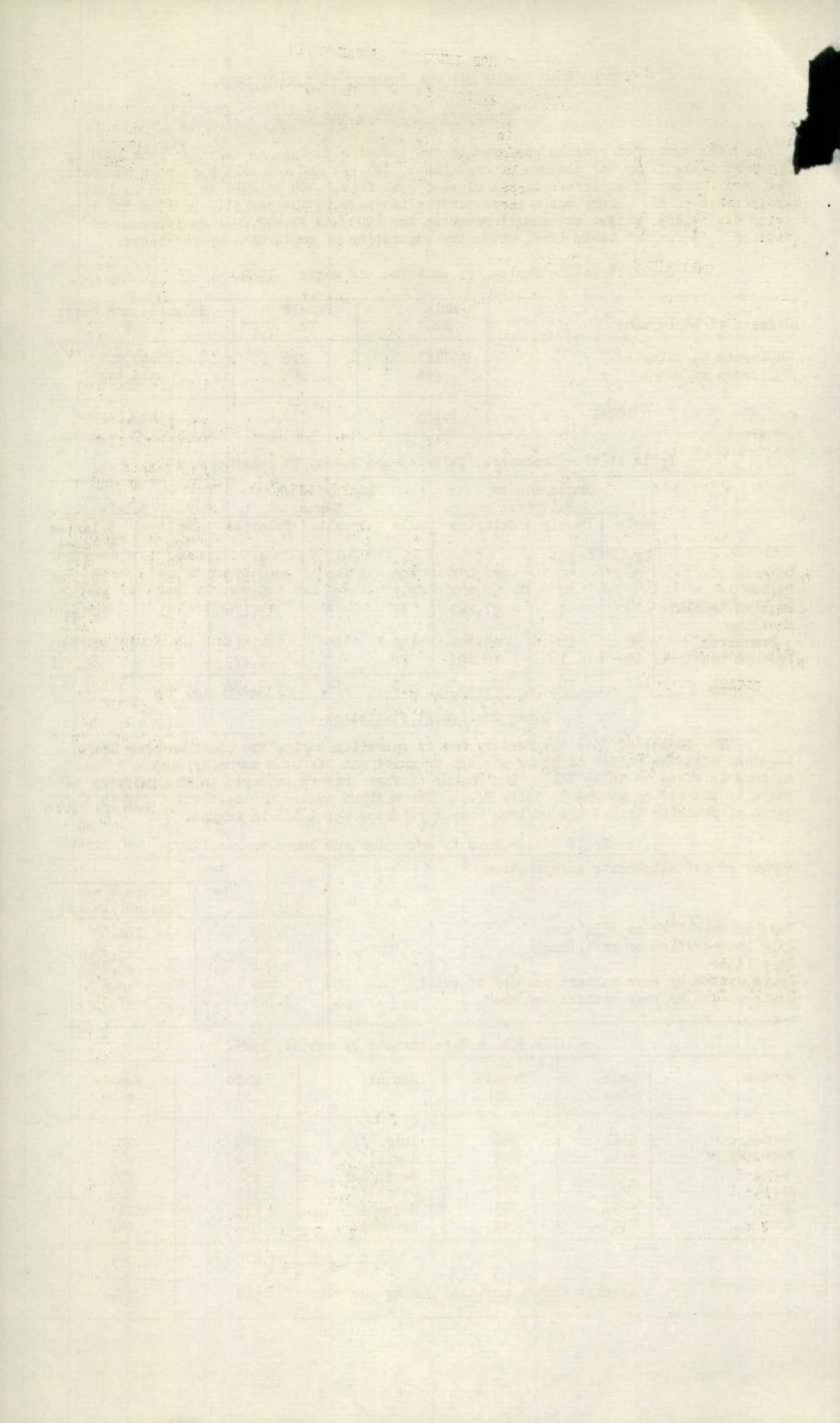


Table 6 presents statistics of wage-earning employees in month of highest employment working specified hours per day for Canada and the provinces with percentages of persons working at each specified daily rate. From the table following it will be noted that the prevailing daily rate in the Dominion as a whole was that of the group of wage-earners working 9 hours per day, the percentage being 45.81. The next in order was the 8 hour group with 28.99 per cent whilst the groups working more than 9 hours aggregated 25.22 per cent.

Table 6. Hours worked per day by wage-earners in month of highest employment for Canada and the provinces 1929.

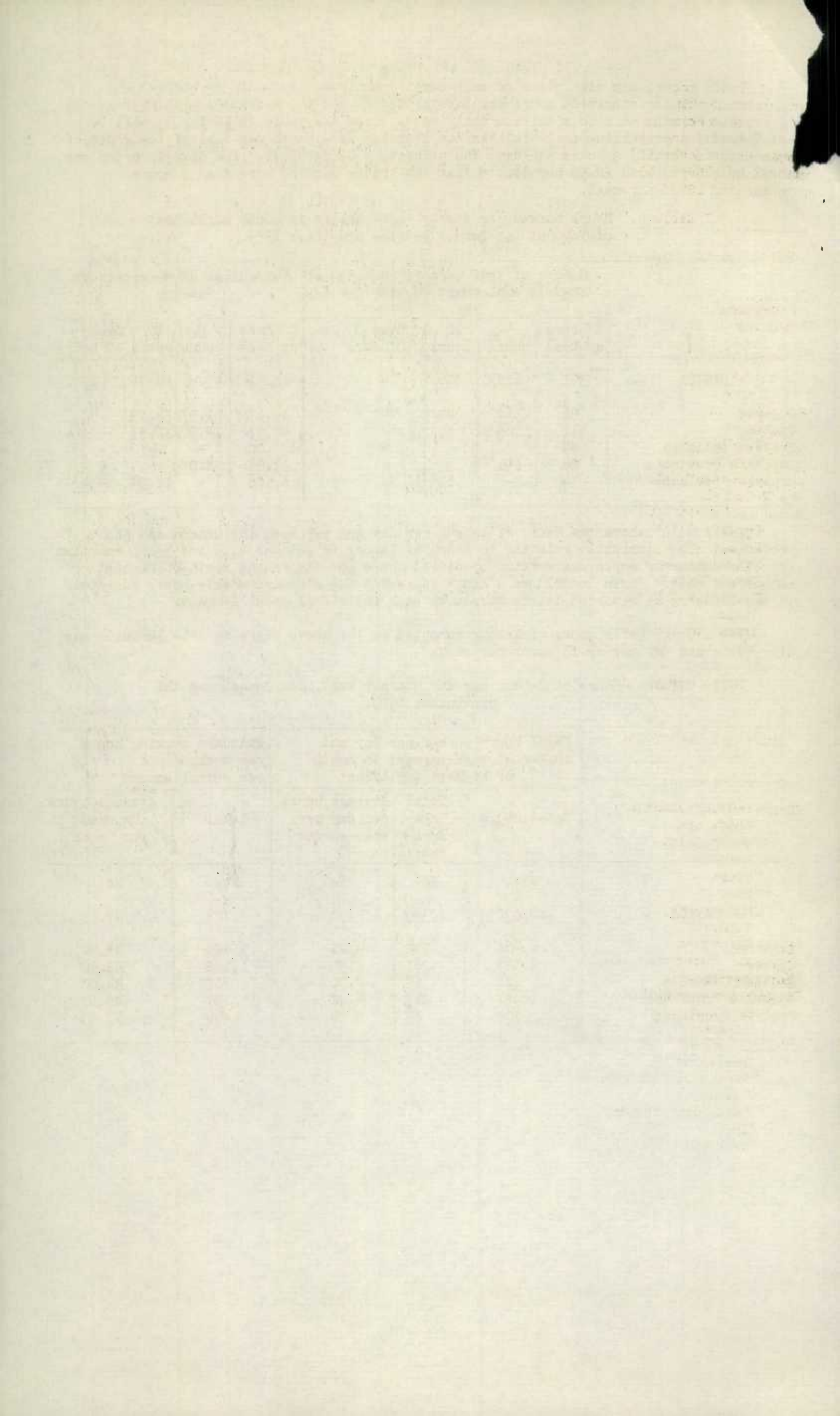
Provinces	Number of wage-earners in month of highest employment working per day of				Percentage of wage-earners working			
	8 hours or less	9 hours	10 hours	Over 10 hours	8 hours or less	9 hours	10 hours	Over 10 hours
CANADA	391	618	336	4	28.99	45.81	24.91	.29
Ontario	96	362	240	4	13.67	51.57	34.19	.57
Quebec	111	65	85	-	42.53	24.90	32.57	-
British Columbia	84	-	-	-	100.00	-	-	-
Maritime Provinces	26	191	-	-	11.98	88.02	-	-
Prairie Provinces	74	-	11	-	87.06	-	12.94	-

Table 6 (a) shows the hours of labour per day and per week for Canada and the provinces. The statistics relating to hours of labour in columns 1, 2 and 3 are compiled from the number of employees working specified hours per day in the month of highest employment whilst those in columns 4 and 5 represent the standard weekly hours of labour in the industry as reported to the Bureau by each individual establishment.

The average daily hours of labour computed on the above basis for the Dominion was 8.96 hours per day and 47.73 hours per week.

Table 6 (a). Hours of Labour per day and per week, for Canada and the provinces, 1929.

	Total hours worked per day and number of wage-earners in month of highest employment			Standard working hours per week, per establishment	
	Total hours	Total Wage-Earners	Average hours per day per wage-earner	Total	Average hours worked per week
	No.	No.	No.	No.	No.
CANADA	12,092	1,349	8.96	3,723	47.73
Ontario	6,468	702	9.21	1,854	47.54
Quebec	2,323	261	8.90	1,188	49.50
British Columbia	672	84	8.00	308	44.00
Maritime Provinces	1,927	217	8.88	137	45.67
Prairie Provinces	702	85	8.26	236	47.20

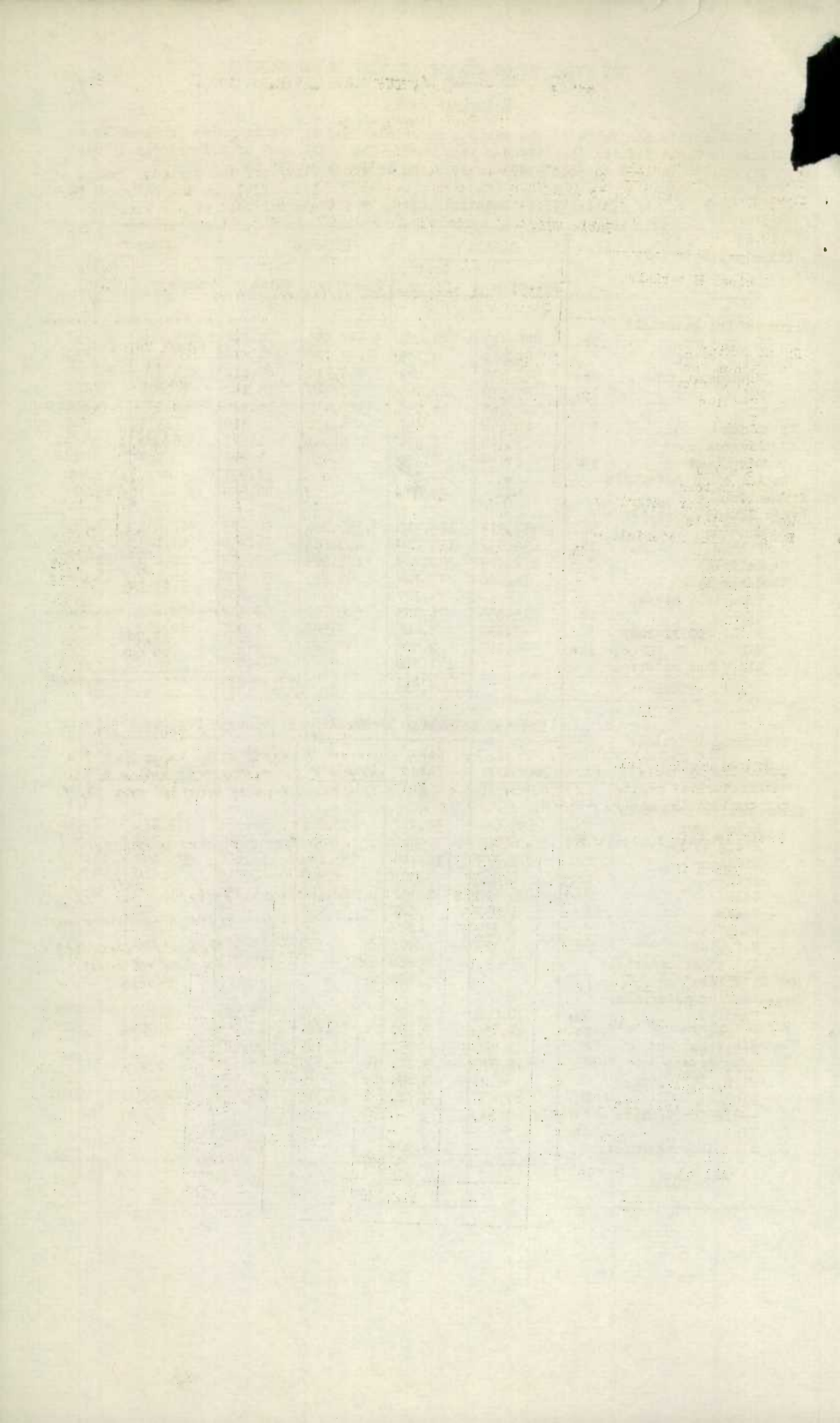


Materials Used.

The quantity and value of the various materials used in the industry is given by provinces in Table VII for the calendar year 1929. The total cost of all materials rose from \$1,952,794 in 1928 to \$2,004,893 in 1929, an increase of \$52,099.

Table VII. - Materials used, by provinces, 1929.

Principal Materials	CANADA		Ontario		Quebec	
	Quantity	Cost Value	Quantity	Cost Value	Quantity	Cost Value
		\$		\$		\$
Broom making materials -						
Broom corn lb.	6,456,321	553,070	3,397,583	275,744	1,093,219	98,767
Broom fibre "	65,219	8,759	33,309	4,875	22,401	2,830
Handles No.	3,979,639	123,269	1,705,319	63,612	745,935	20,728
Twine lb.	59,579	27,960	27,260	13,142	14,601	6,165
Wire "	456,865	24,550	315,530	15,382	66,235	3,680
Tacks "	14,896	897	4,128	319	7,373	302
Staples "	17,392	1,974	5,647	1,071	8,060	471
Velveteen yd.	6,754	2,780	3,454	1,343	967	356
All other materials	-	49,886	-	18,491	-	9,846
Mop Materials	-	70,694	-	46,539	-	19,011
Brush making materials -						
Handles No.	4,387,913	185,410	3,750,421	82,777	481,453	27,872
Fibres lb.	638,831	111,214	490,181	76,938	25,180	5,196
Bristles "	272,829	392,729	187,009	255,978	10,266	21,698
Horse Hair "	78,006	77,744	50,239	50,406	16,102	15,018
Wire (all kinds) -	-	23,287	-	14,852	-	2,552
Blocks No.	815,854	96,394	505,712	38,318	238,827	13,934
Backs for brushes "	17,742	3,409	3,542	1,005	14,200	2,404
Tin lb.	94,143	9,009	48,027	6,745	500	100
All other material	-	241,858	-	144,835	-	22,842
TOTAL	-	2,004,893	-	1,112,872	-	273,772
Principal Materials	British Columbia		Maritime Provinces		Prairie Provinces	
	Quantity	Cost Value	Quantity	Cost Value	Quantity	Cost Value
		\$		\$		\$
Broom making materials -						
Broom corn lb.	635,632	59,912	602,016	50,951	727,871	67,696
Broom fibre "	6,725	442	-	-	2,784	612
Handles No.	272,379	10,744	335,144	14,606	920,862	13,579
Twine lb.	6,262	3,307	4,947	2,019	6,509	3,327
Wire "	26,628	1,737	22,122	1,158	26,350	2,093
Tacks "	1,537	127	958	61	900	88
Staples "	2,339	299	25	4	1,321	129
Velveteen yd.	1,123	403	350	184	860	494
All other materials	-	2,221	-	15,711	-	3,617
Mop Materials	-	5,144	-	-	-	-
Brush making materials -						
Handles No.	30,000	1,620	124,439	72,981	1,600	160
Fibres lb.	34,750	7,350	79,720	19,930	9,000	1,800
Bristles "	2,030	4,950	73,524	110,103	-	-
Horsehair "	2,975	3,215	8,290	8,705	400	400
Wire, (all kinds)	-	2,688	-	3,070	-	125
Blocks No.) 63,600	4,770	49,315	38,652	22,000	720
Backs for brushes ") -	-	-	-	-	-
Tin lb.	-	-	45,616	2,164	-	-
All other materials	-	3,907	-	70,274	-	-
TOTAL	-	112,836	-	410,573	-	94,840



Fuel Consumption.

The quantity and cost value, delivered at the factory, of the various classes of fuel and electricity used in this industry are shown in Table VIII for the calendar year 1929. Coal of all kinds represented 88.3 per cent of the total cost of all fuel exclusive of electricity. Electricity purchased amounted to \$20,081 as compared with \$19,894 in 1928.

Table VIII.- Fuel Consumption, by classes, 1929.

Classes of fuel	Unit of Measure	Quantity	Cost Value at Factory
Bituminous coal	ton	2,098	17,311
Anthracite coal	"	378	3,002
Lignite coal	"	7	89
Coke	"	51	715
Gasoline	Gallon	150	45
Oil (Fuel)	"	30	9
Wood	Cord	99	780
Gas	M.C.ft.	572	572
Other fuel	-	-	575
Electricity	-	-	20,081
TOTAL Fuel	-	-	23,098
" Electricity	-	-	20,081

Power Installation.

The power installed in brush and broom factories during 1929 is shown in Table IX, by classes, number of units in each class and the horsepower according to manufacturers' rating. Electric motors operated by purchased power provided over 74.17 per cent of the motive power in the entire industry.

Boiler installation consisted of 7 units of 680 boiler horsepower capacity.

Table IX.- Power Installation, by classes, 1928.

Classes of Power	No. of Units	Horsepower according to manufacturers' rating
Steam engines and turbines	7	435
Gasoline, gas and oil engines	2	7
Electric motors operated by purchased power	194	1,269
Total power used in manufacturing	203	1,711

ANNUAL REPORT OF THE SECRETARY

FOR THE YEAR 1900

The following table shows the amount of the various items received and paid during the year 1900, and the balance on hand at the close of the year.

RECEIPTS			PAID		
DATE	DESCRIPTION	AMOUNT	DATE	DESCRIPTION	AMOUNT
Jan 1	Balance forward	100.00	Jan 1	Salaries	50.00
Jan 5	Interest on bonds	5.00	Jan 15	Traveling expenses	20.00
Jan 10	Interest on bonds	5.00	Jan 20	Traveling expenses	20.00
Jan 15	Interest on bonds	5.00	Jan 25	Traveling expenses	20.00
Jan 20	Interest on bonds	5.00	Jan 30	Traveling expenses	20.00
Jan 25	Interest on bonds	5.00	Feb 5	Traveling expenses	20.00
Jan 30	Interest on bonds	5.00	Feb 10	Traveling expenses	20.00
Feb 5	Interest on bonds	5.00	Feb 15	Traveling expenses	20.00
Feb 10	Interest on bonds	5.00	Feb 20	Traveling expenses	20.00
Feb 15	Interest on bonds	5.00	Feb 25	Traveling expenses	20.00
Feb 20	Interest on bonds	5.00	Feb 30	Traveling expenses	20.00
Feb 25	Interest on bonds	5.00	Mar 5	Traveling expenses	20.00
Feb 30	Interest on bonds	5.00	Mar 10	Traveling expenses	20.00
Mar 5	Interest on bonds	5.00	Mar 15	Traveling expenses	20.00
Mar 10	Interest on bonds	5.00	Mar 20	Traveling expenses	20.00
Mar 15	Interest on bonds	5.00	Mar 25	Traveling expenses	20.00
Mar 20	Interest on bonds	5.00	Mar 30	Traveling expenses	20.00
Mar 25	Interest on bonds	5.00	Apr 5	Traveling expenses	20.00
Mar 30	Interest on bonds	5.00	Apr 10	Traveling expenses	20.00
Apr 5	Interest on bonds	5.00	Apr 15	Traveling expenses	20.00
Apr 10	Interest on bonds	5.00	Apr 20	Traveling expenses	20.00
Apr 15	Interest on bonds	5.00	Apr 25	Traveling expenses	20.00
Apr 20	Interest on bonds	5.00	Apr 30	Traveling expenses	20.00
Apr 25	Interest on bonds	5.00	May 5	Traveling expenses	20.00
Apr 30	Interest on bonds	5.00	May 10	Traveling expenses	20.00
May 5	Interest on bonds	5.00	May 15	Traveling expenses	20.00
May 10	Interest on bonds	5.00	May 20	Traveling expenses	20.00
May 15	Interest on bonds	5.00	May 25	Traveling expenses	20.00
May 20	Interest on bonds	5.00	May 30	Traveling expenses	20.00
May 25	Interest on bonds	5.00	Jun 5	Traveling expenses	20.00
May 30	Interest on bonds	5.00	Jun 10	Traveling expenses	20.00
Jun 5	Interest on bonds	5.00	Jun 15	Traveling expenses	20.00
Jun 10	Interest on bonds	5.00	Jun 20	Traveling expenses	20.00
Jun 15	Interest on bonds	5.00	Jun 25	Traveling expenses	20.00
Jun 20	Interest on bonds	5.00	Jun 30	Traveling expenses	20.00
Jun 25	Interest on bonds	5.00	Jul 5	Traveling expenses	20.00
Jun 30	Interest on bonds	5.00	Jul 10	Traveling expenses	20.00
Jul 5	Interest on bonds	5.00	Jul 15	Traveling expenses	20.00
Jul 10	Interest on bonds	5.00	Jul 20	Traveling expenses	20.00
Jul 15	Interest on bonds	5.00	Jul 25	Traveling expenses	20.00
Jul 20	Interest on bonds	5.00	Jul 30	Traveling expenses	20.00
Jul 25	Interest on bonds	5.00	Aug 5	Traveling expenses	20.00
Jul 30	Interest on bonds	5.00	Aug 10	Traveling expenses	20.00
Aug 5	Interest on bonds	5.00	Aug 15	Traveling expenses	20.00
Aug 10	Interest on bonds	5.00	Aug 20	Traveling expenses	20.00
Aug 15	Interest on bonds	5.00	Aug 25	Traveling expenses	20.00
Aug 20	Interest on bonds	5.00	Aug 30	Traveling expenses	20.00
Aug 25	Interest on bonds	5.00	Sep 5	Traveling expenses	20.00
Aug 30	Interest on bonds	5.00	Sep 10	Traveling expenses	20.00
Sep 5	Interest on bonds	5.00	Sep 15	Traveling expenses	20.00
Sep 10	Interest on bonds	5.00	Sep 20	Traveling expenses	20.00
Sep 15	Interest on bonds	5.00	Sep 25	Traveling expenses	20.00
Sep 20	Interest on bonds	5.00	Sep 30	Traveling expenses	20.00
Sep 25	Interest on bonds	5.00	Oct 5	Traveling expenses	20.00
Sep 30	Interest on bonds	5.00	Oct 10	Traveling expenses	20.00
Oct 5	Interest on bonds	5.00	Oct 15	Traveling expenses	20.00
Oct 10	Interest on bonds	5.00	Oct 20	Traveling expenses	20.00
Oct 15	Interest on bonds	5.00	Oct 25	Traveling expenses	20.00
Oct 20	Interest on bonds	5.00	Oct 30	Traveling expenses	20.00
Oct 25	Interest on bonds	5.00	Nov 5	Traveling expenses	20.00
Oct 30	Interest on bonds	5.00	Nov 10	Traveling expenses	20.00
Nov 5	Interest on bonds	5.00	Nov 15	Traveling expenses	20.00
Nov 10	Interest on bonds	5.00	Nov 20	Traveling expenses	20.00
Nov 15	Interest on bonds	5.00	Nov 25	Traveling expenses	20.00
Nov 20	Interest on bonds	5.00	Nov 30	Traveling expenses	20.00
Nov 25	Interest on bonds	5.00	Dec 5	Traveling expenses	20.00
Nov 30	Interest on bonds	5.00	Dec 10	Traveling expenses	20.00
Dec 5	Interest on bonds	5.00	Dec 15	Traveling expenses	20.00
Dec 10	Interest on bonds	5.00	Dec 20	Traveling expenses	20.00
Dec 15	Interest on bonds	5.00	Dec 25	Traveling expenses	20.00
Dec 20	Interest on bonds	5.00	Dec 30	Traveling expenses	20.00
Dec 25	Interest on bonds	5.00			
Dec 30	Interest on bonds	5.00			
Total		1000.00	Total		1000.00

Imports and Exports.

Imports of brushes and brooms are shown in Table X by countries for the calendar year 1929. Raw materials were imported to the value of \$1,233,052 and manufactured goods to the value of \$895,429.

Table X. - Imports for consumption, by countries, 1929.

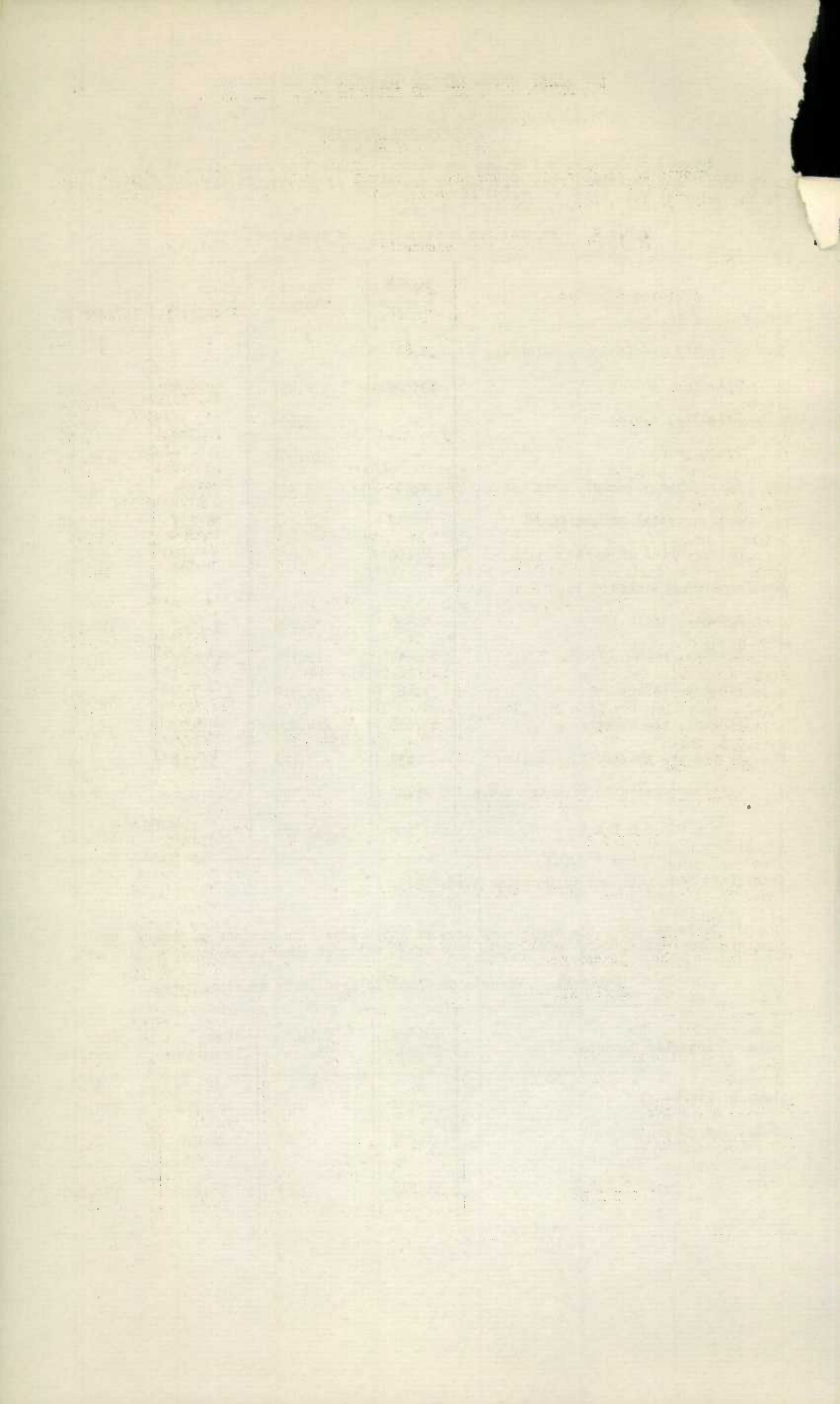
Articles Imported	United Kingdom	United States	Other Countries	All Countries
	\$	\$	\$	\$
Raw or partly manufactured materials -				
Bristles, animal	12,028	378,451	50,655	441,134
Bristles, n.o.p.	-	2,096	-	2,096
Broom, corn	-	423,501	-	423,501
Horse hair, cleaned, dyed, etc.	3,499	68,375	6,768	78,642
Hair, cleaned or uncleaned	237	268,351	4,408	272,996
Hair, curled or dyed, n.o.p.	7,609	6,686	388	14,683
Manufactured articles -				
Brushes, tooth x	9,300	52,890	83,502	145,692
Brushes, paint	64,344	12,787	10,584	87,715
Brushes, toilet	77,487	59,719	116,710	253,916
Brushes, all other	69,616	214,905	55,846	340,367
Brooms and whisks	638	7,116	1,390	9,144
Other manufactures of hair, n.o.p.	2,442	12,595	43,558	58,595
T O T A L	247,200	1,507,472	373,809	2,128,481

x Period from April 1st to December 31st, 1929.

Table XI shows the exports of brushes and brooms, the produce of Canada, by countries for the calendar year 1929. The total value of exports amounted to \$154,110.

Table XI. - Exports of Canadian Produce, by countries, 1929.

Articles Exported	United Kingdom	United States	Other Countries	Other Countries
	\$	\$	\$	\$
Brushes, all kinds	54,748	692	69,977	125,417
Brooms and whisks	2,138	265	26,290	28,693
T O T A L	56,886	957	96,267	154,110



Firms Manufacturing Brooms, Brushes and Mops in Canada, 1929.

PRINCE EDWARD ISLAND

The Iohnes Broom Mfg.	Lower Queen St.	Charlottetown
-----------------------	-----------------	---------------

NOVA SCOTIA

Canadian National Institute for the Blind	172 Almon St.	Halifax
---	---------------	---------

NEW BRUNSWICK

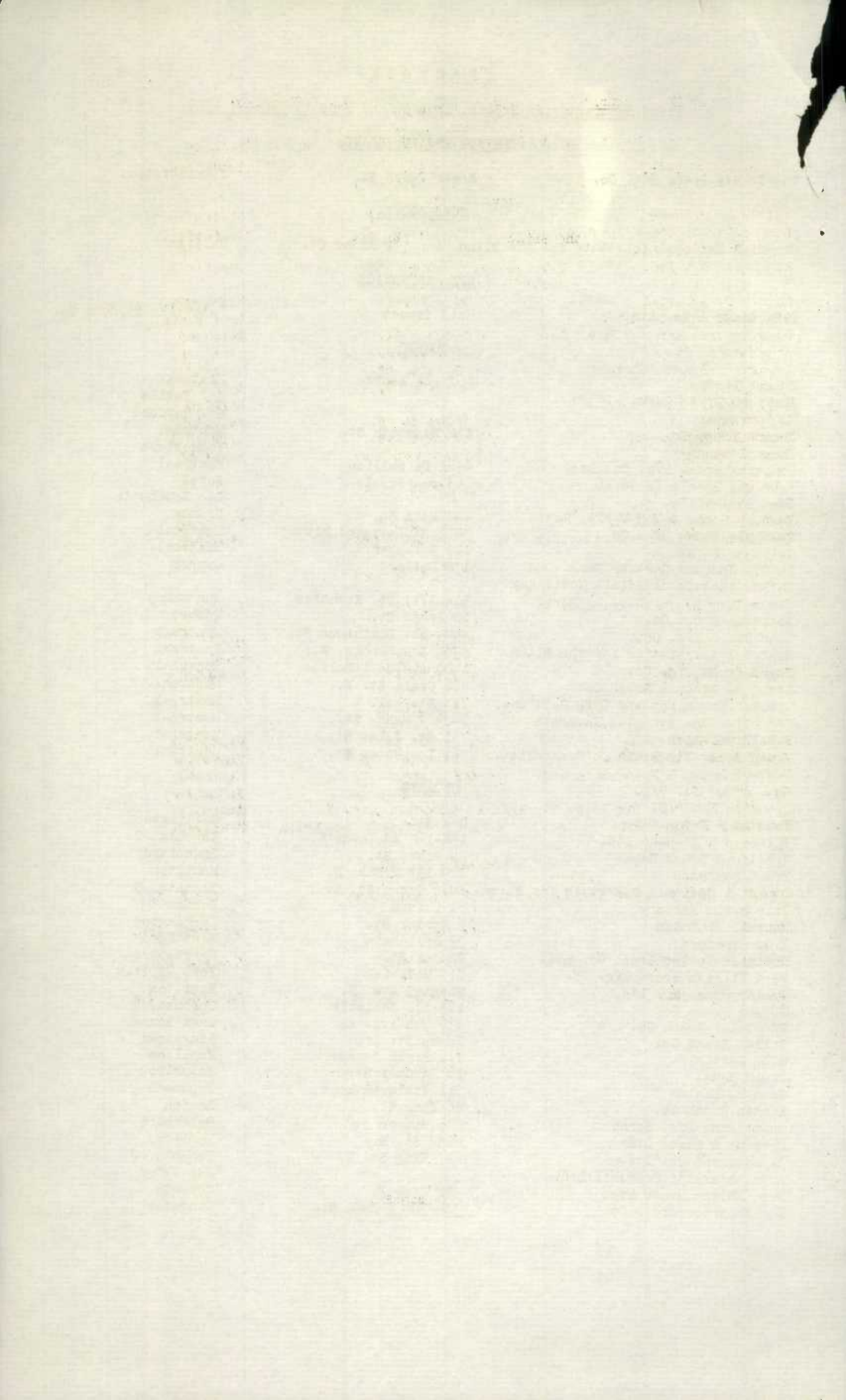
T.S. Simms & Co. Ltd.	Main Street	Fairville, St. John Co.
-----------------------	-------------	-------------------------

QUEBEC

Eugene Bordier	662 rue Azelda	Montreal
American Broom Works		St. Basile
B. Bourassa		St. Raymond
Canada Broom Co.	112 Nazareth St.	Montreal
Chas. Lesieur		Yamachiche
Dominion Brush Mfg. Co. Ltd.	4361 De bullion	Montreal
Fabrique Balais de Sorel	165 rue Sophie	Sorel
Jos. Sasseville		Lac Bouchette
Eastern Broom & Mop Works, Reg'd.	240 Main St.	Granby
Reliable Brush Mfg. Co.	3822 St. Lawrence Blvd.	Montreal
Gelinas, Onias	119 Belanger	Montreal
La Cie Jacques Cartier Enrg.	178 Dollard	Quebec
La Manufacture de Balais Montmagny Enrg.	Box 171, St. Nicholas	Montmagny
National Broom Co.	10 Arago St.	Quebec
Mann Brush Mfg. Co.	4443 St. Dominique St.	Montreal
Montreal Association for the Blind	6980 Sherbrooke, W.	Montreal
Royal Broom Mfg. Co.	1400 Ave. de l'Eglise	Montreal
Standard Broom & Brush Co.	866 Craig St. E.	Montreal
Wheeler Broom, Mop and Life Belt Co.	713 St. Paul, W.	Montreal
L'Atelier des Avengles, Nazareth	1425 J Mance St.,	Montreal
Harold E. Smith	731 St. James St.	Montreal
Pro-phy-lac-tic Brush Co (Canada) Ltd.	961 Inspector St.	Montreal

ONTARIO

John Adam & Son	Oak St.	Collingwood
The Boeckh Company Ltd.	158-168 Adelaide W.	Toronto, 2
Brantford Brush Works	24 Grand St.	Brantford
Frank Burdette	129-133 McNab, N.	Hamilton
Canadian National Institute for Blind	1076 Queen St. E.	Toronto, 8
City Broom Factory	81 Oxford	London
Maxwell J. Latam	5 Poplar St.	Leamington
E.G. Crawford	39 Britannia	Stratford
Dominion Toilet Brush Co. Ltd.	Church St.	Morrisburg
Fort William Broom Mfg. Co.	710 McTavish	Fort William
Fuller Brush Co. Ltd.	Sherman Ave. N.	Hamilton
Gibson Broom Co.	168-170 Christie	Toronto, 4
Excelsior Broom Co.	856 5th Ave. E.	Owen Sound
Wilson Broom Co.	James St.	Ridgetown
H.L. Martin	112 Birch Avenue	Hamilton
Irwin Hamel	16 Noecker St.	Waterloo
John R. Haslam	211 Victoria Road	Tecumseh
London Brush Co.	86 King St.	London
McQuillan, Mrs. Sarah	215 Simcoe St.	Peterboro
Meakins & Sons, Ltd.	King St. E.	Hamilton
A. Muirhead Co. Ltd.	217 King St. E.	Toronto, 2
Royal Sterling Products Ltd.		Harriston
Geo. Nelson Broom Mfg.	538 King E.	Toronto
The Superior Broom Co.	304-306 Nelson St.	Kingston



Firms Manufacturing Brooms, Brushes and Mops in Canada, 1929.ONTARIO (Cont'd.)

Walter Pearson	242 Liverpool St.	Guelph
Perfection Sanitary Brush Co.	1118 Queen St. W.	Toronto, 3
Royal Brush Co. Ltd.	43 Main St. E.	Hamilton
Rubberset Co. Ltd.	H.O. 94 Wellington St.	Toronto 2
	Factory Gravenhurst	
Andrew T. Schiedel	61 King St. E.	Kitchener
Stevens-Hepner Co. Ltd.		Port Elgin
Co-operative Broom & Brush Co.	20 Bricker St.	Waterloo
Brushmakers Co.	138 Portage Ave. E.	Winnipeg
Twisswire Brushes Ltd.	143 Berkley St.	Toronto 2
Frank Wehrle	1701 Dundas W.	Toronto 3
West Taylor, Bickle & Co. Ltd.		Norwich
Walter Woods Ltd.	82 McNab St. N.	Hamilton
Brown Broom Mfg. Co.	174 Euclid Ave.	Toronto 3
George Brandon	67 Beechwood Ave.	Hamilton

MANITOBA

Standard Mfg. Co. Ltd.	744 Wall St.	Winnipeg
Canadian National Institute for Blind	Portage & Sherburn	Winnipeg

SASKATCHEWAN

Queen City Broom Works, Ltd.	1813 Wallace St.	Regina
------------------------------	------------------	--------

ALBERTA

Standard Mfg. Co.	10515 97th St.	Edmonton
-------------------	----------------	----------

BRITISH COLUMBIA

B.C. Brush Works Ltd.	891 Cambie St.	Vancouver
Crown Broom Works, Ltd.	304 First Ave. E.	Vancouver
Western Broom & Woodenware Ltd.	631 Kingsway	Vancouver
Saul Brush Co. Ltd.	1156-15th Ave. E.	Vancouver
Canadian National Institute for Blind	332-First Ave. E.	Vancouver
Vancouver Broom & Brush Mfrs.	Rear 1955 Commercial Drive	Vancouver

Mop Manufacturers.

Joseph E. Huard, prop. W.O.D. Mop Co.	1700 Papineau Ave.	Montreal, Que.
Novo Oil Co.	1726 Poupart St.	Montreal, Que.
Tarbox Bros. Ltd.	14 Morrow Ave.	Toronto, Ont.
Dust Control Co.	2246 Commercial Drive	Vancouver, B.C.

STATISTICS CANADA LIBRARY
BIBLIOTHÈQUE STATISTIQUE CANADA



1010671603