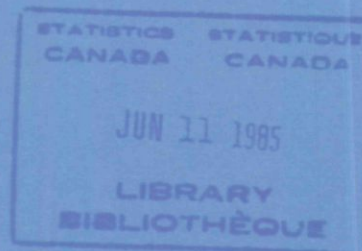


# Preliminary statement of Canadian international trade

April 1985

Not for release before 7 a.m. E.S.T.  
Tuesday, June 11, 1985



## Data in Many Forms ...

Statistics Canada disseminates data in a variety of forms. In addition to publications, both standard and special tabulations are offered on computer print-outs, microfiche and microfilm, and magnetic tapes. Maps and other geographic reference materials are available for some types of data. Direct access to aggregated information is possible through CANSIM, Statistics Canada's machine-readable data base and retrieval system.

## How to Obtain More Information

Inquiries about this publication and related statistics or services should be directed to:

Trade Information Unit,  
International Trade Division,

Statistics Canada, Ottawa, K1A 0T6 (Telephone: 990-9647) or to the Statistics Canada reference centre in:

St. John's	(772-4073)	Sturgeon Falls	(753-4888)
Halifax	(426-5331)	Winnipeg	(949-4020)
Montréal	(283-5725)	Regina	(359-5405)
Ottawa	(990-8116)	Edmonton	(420-3027)
Toronto	(966-6586)	Vancouver	(666-3691)

Toll-free access is provided in all provinces and territories, for users who reside outside the local dialing area of any of the regional reference centres.

Newfoundland and Labrador	Zenith 0-7037
Nova Scotia, New Brunswick and Prince Edward Island	1-800-565-7192
Quebec	1-800-361-2831
Ontario	1-800-268-1151
Manitoba	1-800-282-8006
Saskatchewan	1(112)800-667-3524
Alberta	1-800-222-6400
British Columbia (South and Central)	112-800-663-1551
Yukon and Northern B.C. (area served by NorthwestTel Inc.)	Zenith 0-8913
Northwest Territories (area served by NorthwestTel Inc.)	Zenith 2-2015

## How to Order Publications

This and other Statistics Canada publications may be purchased from local authorized agents and other community bookstores, through the local Statistics Canada offices, or by mail order to Publication Sales and Services, Statistics Canada, Ottawa, K1A 0T6.

1(613)990-8114

1(613)990-8115

**Statistics Canada**  
International Trade Division

Trade of Canada

# **Preliminary statement of Canadian international trade**

April 1985

Published under the authority of  
the Minister of Supply and  
Services Canada

© Minister of Supply  
and Services Canada 1985

May 1985  
5-4110-508

Price: Canada, \$5.00, \$50.00 a year  
Other Countries, \$6.00, \$60.00 a year

Payment to be made in Canadian funds or equivalent

Catalogue 65-001P, Vol. 1, No. 2

ISSN 0828-1998

Ottawa

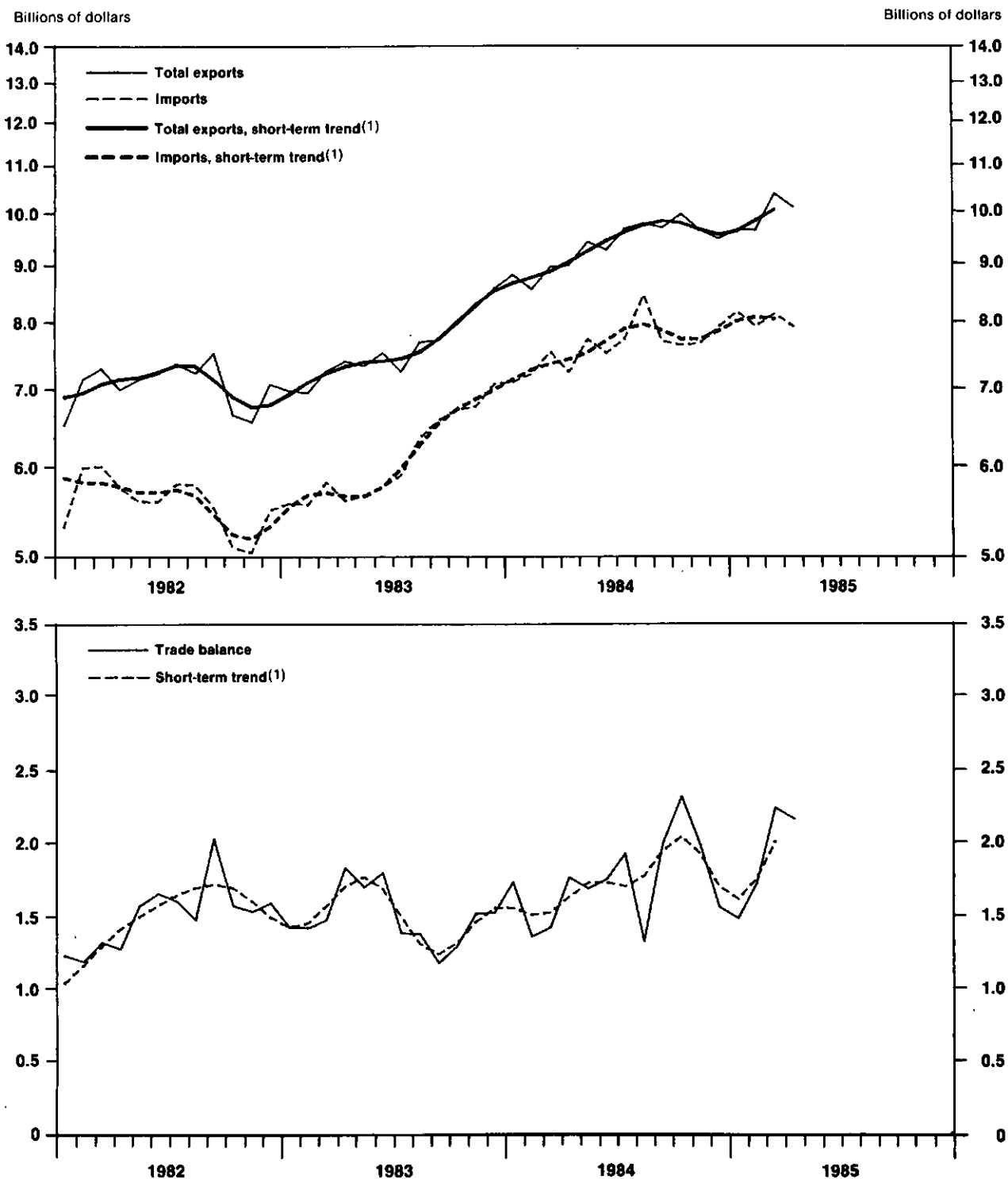


**TABLE OF CONTENTS**

	Page
Charts	5
Commentary	6
<b>Tables</b>	
1. Merchandise Trade of Canada	8
2. Merchandise Trade by Principal Trading Areas	9
3. Total Exports by Commodity	10
4. Imports by Commodity	11



**Imports, Total Exports, and Trade Balance, All Countries, Seasonally Adjusted  
Balance of Payments Basis**



(1) The short-term trend gives a clearer picture of the direction and rate of change of trade by averaging the substantial monthly fluctuations which frequently occur in trade. The trend for the last month is not shown in the charts above since it frequently changes significantly with the addition of succeeding months of data.

## **Preliminary Statement of Canadian International Trade**

April 1985

### **Month-to-Month (Table 1)**

On a seasonally adjusted balance of payments basis, preliminary estimates indicate a small decline in the value of Canada's total exports. Total exports in April stood at \$10.1 billion, down \$280 million (2.7%) from the record value set last month, but still above previous values.

Imports fell \$205 million (2.5%) in April to \$7.9 billion, reversing the increase in March and returning to the level set in December of last year. The resulting merchandise trade surplus remained at \$2.2 billion.

### **Short-Term Trend (Graphs)**

Although exports declined in April, the short-term trend continued to show a steady increase of about 2% per month after a brief decline at the end of last year. However, this growth occurred primarily in the energy sector with the trend for exports of crude petroleum and of refined petroleum products growing at over 10% per month. More moderate growth in the trend occurred in industrial goods and materials, machinery and consumer goods. The trend for exports of forestry products and of automotive products was virtually flat in the current period.

The short-term trend for imports has levelled off currently, following the brief recovery from modest declines in the fourth quarter of last year. The trend for imports of industrial goods and materials and of machinery grew moderately, slightly offset by a sharp decline in the trend for imports of energy products. The trend in automotive imports was down slightly, while the trend in imports of consumer goods was flat.

### **Commodity Analysis**

#### **Total Exports (Seasonally Adjusted), Balance of Payments Basis (Table 3)**

Nearly half of the \$280 million decline in exports was due to a sharp drop in exports of coal of \$140 million, offsetting substantial gains made in February and March. Exports of automobiles fell slightly by \$41 million. Trucks

and other motor vehicles dropped \$84 million. Offsetting these declines was a gain in exports of crude petroleum of \$116 million to a level of \$648 million, more than double the level of exports in January. Other commodities presented a mixture of movements, often reversing last month's movement. Wheat was up \$43 million; iron ore rose \$31 million; precious metals fell \$51 million; inorganic chemicals fell \$31 million. Exports of steel bars, rods, plates and sheets rose \$9 million, the sixth increase in seven months, to \$122 million, double the average monthly value of two years ago.

#### **Imports (Seasonally Adjusted), Balance of Payments Basis (Table 4)**

A fall in imports of automobiles of \$124 million accounted for almost half of the decline in imports at the total level. Imports of energy products (coal, crude petroleum and petroleum and coal products) declined \$150 million, reversing corresponding gains in March. Office machinery also declined in April, falling \$56 million, accelerating a downward trend from the peak level reached in mid-1984. Imports of aircraft, engines and parts, gained \$66 million after a sharp drop in March.

#### **Trading Partner Analysis (Table 2)**

#### **Total Exports (Seasonally Adjusted), Balance of Payments Basis**

Exports to the United States rose fractionally in April, remaining at a record \$8.1 billion. This increase sustains the strong recovery from the declines registered at the end of 1984. Exports to Japan dropped sharply by \$165 million (33%), due largely to exports of coal which make up about one-third of exports to that country. Exports to the United Kingdom rose slightly. Exports to other countries declined slightly.

#### **Imports (Seasonally Adjusted), Balance of Payments Basis**

After recovering from declines posted in the second half of 1984, imports from the United (continued)



States stabilized in January at \$6.0 billion, and have remained at \$5.9 billion for the past three months. Imports from the United States in April were only \$36 million below the March value. Imports from Japan decreased by 7% to \$415 million, continuing a steady downward trend from the record high (\$520 million) set in September, 1984. Imports from the United King-

dom rose \$37 million to \$185 million after three slow months. Imports from other E.E.C. countries have remained stable since August of 1984.

**Available on CANSIM: matrices 30, 3643-3644, 3650-3679, 3686-3714, 3718-3719.**  
(see tables on pages 8 to 11)

Order the April 1985 issue of *Summary of Canadian International Trade* (65-001, \$15/\$150), available the fourth week of June, or contact Gordon Blaney (613-990-9647), Trade Information Unit, or John Butterill (613-990-9784), Trade Measures and Analysis Section, International Trade Division.

**Table 1**  
**Merchandise Trade of Canada**  
 April 1985  
 Balance of Payments Basis

	Total Exports <sup>1</sup> Raw	Imports Raw	Total Exports <sup>1</sup> S.A. \$ millions	Imports S.A.	Balance S.A.	Period-to-Period Change <sup>2</sup>		
						Total Exports <sup>1</sup> S.A. %	Imports S.A. %	Balance S.A. \$ millions
1979	65,582	61,156	65,582	61,156	4,425	22.9	24.7	108
1980	76,680	67,901	76,680	67,901	8,779	16.9	11.0	4,354
1981	84,468	77,140	84,468	77,140	7,328	10.2	13.6	-1,451
1982	84,540	66,726	84,540	66,726	17,814	0.1	-13.5	10,486
1983	90,825	73,120	90,825	73,120	17,705	7.4	9.6	-109
1984	112,118	91,450	112,118	91,450	20,667	23.4	25.1	2,963
<b>1983</b>								
First Quarter	20,531	16,593	21,133	16,872	4,261	4.6	8.3	-370
Second Quarter	23,506	18,414	22,242	16,963	5,279	5.2	0.5	1,018
Third Quarter	21,533	17,867	22,655	18,772	3,883	1.9	10.7	-1,396
Fourth Quarter	25,253	20,246	24,795	20,514	4,281	9.4	9.3	398
<b>1984</b>								
First Quarter	25,776	21,818	26,298	21,832	4,465	6.1	6.4	184
Second Quarter	29,341	24,161	27,642	22,479	5,163	5.1	3.0	698
Third Quarter	27,663	22,696	29,108	23,898	5,210	5.3	6.3	47
Fourth Quarter	29,338	22,775	29,070	23,241	5,829	-0.1	-2.8	619
<b>1985</b>								
First Quarter	28,781	23,674	29,668	24,265	5,402	2.1	4.4	-427
<b>1984</b>								
January	8,244	6,530	8,806	7,090	1,716	2.8	0.4	207
February	8,353	7,226	8,548	7,205	1,343	-2.9	1.6	-373
March	9,178	8,062	8,944	7,537	1,407	4.6	4.6	65
April	9,107	7,820	8,978	7,228	1,750	0.4	-4.1	343
May	10,258	8,509	9,409	7,736	1,673	4.8	7.0	-77
June	9,976	7,832	9,256	7,516	1,740	-1.6	-2.8	68
July	9,207	7,515	9,661	7,747	1,914	4.4	3.1	174
August	8,924	8,026	9,763	8,453	1,310	1.1	9.1	-604
September	9,533	7,154	9,683	7,699	1,984	-0.8	-8.9	674
October	10,250	8,150	9,950	7,643	2,307	2.8	-0.7	322
November	10,114	7,725	9,644	7,670	1,974	-3.1	0.4	-333
December	8,974	6,900	9,475	7,928	1,547	-1.8	3.4	-427
<b>1985</b>								
January	9,128	7,641	9,649	8,179	1,470	1.8	3.2	-77
February	9,142	7,586	9,644	7,939	1,705	-0.1	-2.9	235
March	10,511	8,447	10,374	8,147	2,227	7.6	2.6	522
April	10,360	8,907	10,093	7,943	2,150	-2.7	-2.5	-77
<b>Year to date</b>								
1984	34,882	29,639	35,275	29,060	6,215	23.6	29.4	141
1985	39,141	32,581	39,761	32,208	7,553	12.7	10.8	1,337

<sup>1</sup> Total Exports = Domestic Exports + Re-exports.

<sup>2</sup> Year to year, quarter to quarter, month to month.

Note: Due to rounding monthly data may not add up to quarterly data and quarterly data may not add up to annual data.

Table 2  
**Merchandise Trade by Principal Trading Areas**

April 1985

Seasonally Adjusted, Balance of Payments Basis

			Period-to-Period Change				Year-to-Date \$ millions	Change Over Previous Year	
	Mar. \$ millions	Apr.	Mar. %	Apr. %	Mar. \$ millions	Apr.		%	\$ millions
<b>Total exports to:</b>									
United States	8,075.8	8,130.0	8.9	0.7	657.3	54.2	30,919.8	14.8	3,989.8
Japan	505.3	340.2	-1.0	-32.7	-5.0	-165.1	1,865.4	11.4	190.9
United Kingdom	187.8	195.6	-22.1	4.1	-53.3	7.8	853.3	3.0	25.1
"Other E.E.C." countries	383.7	343.8	12.6	-10.4	42.8	-39.9	1,481.7	2.8	39.7
"Other O.E.C.D." countries	228.8	214.2	28.1	-6.4	50.2	-14.6	815.4	24.7	161.3
"Other" countries	993.0	869.4	4.0	-12.4	38.6	-123.6	3,825.4	2.1	78.8
<b>Total</b>	<b>10,374.4</b>	<b>10,093.2</b>	<b>7.6</b>	<b>-2.7</b>	<b>730.5</b>	<b>-281.2</b>	<b>39,761.0</b>	<b>12.7</b>	<b>4,485.6</b>
<b>Imports from:</b>									
United States	5,935.7	5,900.1	0.8	-0.6	49.9	-35.6	23,727.0	12.7	2,674.8
Japan	446.7	414.8	1.5	-7.1	6.6	-31.9	1,777.5	10.0	162.1
United Kingdom	148.0	184.5	2.8	24.7	4.0	36.6	630.5	-14.7	-109.1
"Other E.E.C." countries	511.2	514.1	3.6	0.6	17.8	2.8	2,018.2	14.1	248.8
"Other O.E.C.D." countries	211.9	207.4	11.9	-2.1	22.6	-4.5	790.9	11.8	83.7
"Other" countries	893.9	722.0	13.7	-19.2	107.7	-171.8	3,264.0	2.8	87.9
<b>Total</b>	<b>8,147.4</b>	<b>7,942.9</b>	<b>2.6</b>	<b>-2.5</b>	<b>208.6</b>	<b>-204.5</b>	<b>32,208.1</b>	<b>10.8</b>	<b>3,148.2</b>
<b>Balance with:</b>									
United States	2,140.1	2,229.9			607.4	89.8	7,192.7		1,315.1
Japan	58.6	-74.6			-11.7	-133.2	87.9		28.7
United Kingdom	39.8	11.0			-57.4	-28.8	222.7		134.2
"Other E.E.C." countries	-127.5	-170.2			25.1	-42.7	-536.4		-209.1
"Other O.E.C.D." countries	16.9	6.9			27.6	-10.0	24.4		77.6
"Other" countries	99.1	147.4			-69.1	48.3	561.4		-9.1
<b>Total</b>	<b>2,227.0</b>	<b>2,150.4</b>			<b>521.9</b>	<b>-76.7</b>	<b>7,552.8</b>		<b>1,337.4</b>

**Table 3**  
**Total Exports by Commodity**

April 1985  
Seasonally Adjusted, Balance of Payments Basis

	Period-to-Period Change									
	Mar.		Apr.		Mar.		Apr.		Year-to-Date \$ millions	Change Over Previous Year % \$ millions
	\$ millions	%	\$ millions	%	\$ millions	%	\$ millions	%		
<b>Live animals</b>	<b>64.9</b>	<b>48.7</b>	<b>25.0</b>	<b>-25.0</b>	<b>13.0</b>	<b>-16.2</b>	<b>212.7</b>	<b>66.6</b>	<b>85.0</b>	
<b>Food, feed, beverages and tobacco</b>	<b>698.1</b>	<b>757.3</b>	<b>-0.3</b>	<b>8.5</b>	<b>-2.4</b>	<b>59.2</b>	<b>2,929.9</b>	<b>-9.2</b>	<b>-298.6</b>	
Fish and fish preparations	141.9	135.1	11.1	-4.8	14.2	-6.8	540.4	4.4	22.9	
Barley	32.3	37.3	1.6	15.5	0.5	5.0	161.1	-39.8	-106.5	
Wheat	256.9	299.8	-5.4	16.7	-14.6	42.9	1,131.7	-13.4	-175.4	
Wheat flour	11.2	8.3	55.6	-25.9	4.0	-2.9	31.4	11.3	3.2	
Other cereals unmilled	7.5	11.8	-3.8	57.3	-0.3	4.3	31.9	-51.9	-34.4	
Other cereal preparations	21.9	16.8	8.4	-23.3	1.7	-5.1	79.9	-2.0	-1.6	
Meat and meat preparations	63.1	62.0	-6.5	-1.7	-4.4	-1.1	261.1	6.2	15.2	
Alcoholic beverages	52.3	52.8	18.9	1.0	8.3	0.5	197.0	0.7	1.4	
Other food, feed, beverages and tobacco	111.1	133.5	-9.6	20.2	-11.8	22.4	495.6	-4.5	-23.2	
<b>Crude materials, inedible</b>	<b>1,814.1</b>	<b>1,741.7</b>	<b>1.5</b>	<b>-4.0</b>	<b>27.1</b>	<b>-72.4</b>	<b>6,778.3</b>	<b>20.5</b>	<b>1,154.2</b>	
Rapeseed	40.7	60.4	-23.1	48.4	-12.2	19.7	192.6	-35.3	-104.9	
Other crude vegetable products	48.7	40.6	90.2	-16.6	23.1	-8.1	158.5	12.7	17.8	
Iron ores, concentrates and scrap	112.7	143.2	-40.9	27.1	-78.0	30.5	562.9	32.5	138.0	
Copper ores, concentrates and scrap	38.6	38.3	-35.6	-0.8	-21.3	-0.3	176.2	3.0	5.2	
Nickel ores, concentrates and scrap	62.5	66.0	73.1	5.6	26.4	3.5	211.3	4.3	8.8	
Zinc ores, concentrates and scrap	2.7	28.7	285.7	963.0	2.0	26.0	33.6	-51.9	-36.3	
Other ores, concentrates and scrap	63.8	65.1	-53.5	2.0	-73.5	1.3	379.1	33.1	94.2	
Crude petroleum	532.4	648.4	12.9	21.8	60.8	116.0	1,942.4	41.9	573.2	
Natural gas	365.0	346.8	4.9	-5.0	16.9	-18.2	1,374.8	5.1	67.2	
Coal and other bituminous substances	239.8	102.9	26.9	-57.1	50.9	-136.9	677.3	14.0	83.3	
Asbestos unmanufactured	30.3	37.1	-8.5	22.4	-2.8	6.8	148.7	-19.1	-35.2	
Other crude animal products	25.5	27.1	-2.7	6.3	-0.7	1.6	105.7	5.6	5.6	
Other crude wood products	40.2	13.2	62.8	-67.2	15.5	-27.0	109.8	7.1	7.3	
Other crude non-metallic minerals	191.7	107.3	10.4	-44.0	18.1	-84.4	631.4	105.2	323.7	
Other crude materials, inedible	19.6	16.4	10.7	-16.3	1.9	-3.2	74.0	9.6	6.5	
<b>Fabricated materials, inedible</b>	<b>3,363.6</b>	<b>3,211.3</b>	<b>15.4</b>	<b>-4.5</b>	<b>448.3</b>	<b>-152.3</b>	<b>12,475.3</b>	<b>12.2</b>	<b>1,356.3</b>	
Lumber	377.2	365.4	11.7	-3.1	39.4	-11.8	1,414.3	-0.4	-5.7	
Other wood fabricated materials	78.1	77.9	7.0	-0.3	5.1	-0.2	306.7	0.0	0.1	
Woodpulp and similar pulp	289.9	277.4	-1.5	-4.3	-4.3	-12.5	1,175.3	11.4	120.7	
Newsprint paper	480.6	461.8	4.6	-3.9	21.2	-18.8	1,836.7	31.6	440.8	
Other paper and paperboard	116.6	111.2	16.1	-4.6	16.2	-5.4	435.4	16.1	60.3	
Inorganic chemicals	145.7	114.3	44.3	-21.6	44.7	-31.4	490.9	14.8	63.4	
Organic chemicals	134.2	150.6	14.0	12.2	16.5	16.4	548.2	13.8	66.3	
Fertilizers and fertilizer materials	130.8	134.1	25.9	2.5	26.9	3.3	486.4	1.2	5.9	
Synthetic rubber and plastics	105.9	89.7	9.7	-15.3	9.4	-16.2	394.6	40.3	113.3	
Other chemical products	29.0	24.2	-20.1	-16.6	-7.3	-4.8	122.5	7.4	8.4	
Petroleum and coal products	360.5	344.4	53.7	-4.5	125.9	-16.1	1,119.1	5.0	53.7	
Primary iron and steel	8.8	19.0	-47.0	115.9	-7.8	10.2	58.5	-23.1	-17.6	
Steel bars, rods, plates, sheets	113.0	122.0	3.0	8.0	3.3	9.0	440.2	27.4	94.7	
Other iron and steel & alloys	85.8	74.3	7.9	-13.4	6.3	-11.5	334.9	12.4	36.9	
Aluminum including alloys	162.4	173.4	21.6	6.8	28.8	11.0	668.5	-1.1	-7.4	
Copper and alloys	42.9	69.3	-35.7	61.5	-23.8	26.4	231.2	-20.4	-59.4	
Nickel and alloys	58.7	57.8	5.2	-1.5	2.9	-0.9	225.8	28.4	50.0	
Precious metals and alloys	167.4	116.4	33.2	-30.5	41.7	-51.0	532.4	59.6	198.9	
Zinc and alloys	76.0	59.5	38.2	-21.7	21.0	-16.5	251.3	6.3	14.9	
Other non-ferrous metals and alloys	14.3	16.9	4.4	18.2	0.6	2.6	59.8	4.4	2.5	
Metal fabricated basic products	83.3	75.1	7.6	-9.8	5.9	-8.2	315.1	20.8	54.3	
Electricity	145.4	131.4	55.5	-9.6	51.9	-14.0	477.8	13.5	56.7	
Textile fabricated materials	27.6	24.0	16.9	-13.0	4.0	-3.6	99.6	-0.8	-0.8	
Non-metallic mineral basic products	70.7	61.6	29.7	-12.9	16.2	-9.1	239.9	9.0	19.9	
Other fabricated materials	59.0	59.8	6.9	1.4	3.8	0.8	210.7	-6.2	-14.0	
<b>End products, inedible</b>	<b>4,249.7</b>	<b>4,159.7</b>	<b>5.5</b>	<b>-2.1</b>	<b>220.5</b>	<b>-90.0</b>	<b>16,684.2</b>	<b>14.3</b>	<b>2,091.6</b>	
Industrial machinery	315.2	296.1	8.5	-6.1	24.8	-19.1	1,175.7	16.2	164.3	
Agricultural machinery including tractors	50.8	51.1	4.1	0.6	2.0	0.3	202.4	-16.5	-40.0	
Passenger autos and chassis	1,176.2	1,135.0	14.2	-3.5	146.3	-41.2	4,539.9	6.5	275.9	
Trucks and other motor vehicles	595.5	511.4	1.8	-14.1	10.4	-84.1	2,250.3	21.3	394.4	
Motor vehicle pts., incl. eng. & eng. pts.	896.7	925.5	-5.5	3.2	-52.5	28.8	3,778.0	17.2	555.2	
Television, telecommunication equipment	245.3	251.2	4.4	2.4	10.4	5.9	983.4	28.1	215.8	
Aircraft, engines, parts	179.7	188.9	8.6	5.1	14.2	9.2	694.7	20.1	116.4	
Other transportation equipment	82.1	95.3	11.4	16.1	8.4	13.2	339.6	13.8	41.3	
Office machines and equipment	178.5	171.5	6.5	-3.9	10.9	-7.0	681.7	22.7	126.1	
Other equipment and tools	200.4	211.6	-3.9	5.6	-8.2	11.2	830.6	16.5	117.5	
Other consumer goods	159.8	165.8	3.2	3.8	4.9	6.0	629.4	4.4	26.3	
Other end products, inedible	169.6	156.2	40.6	-7.9	49.0	-13.4	578.4	20.4	98.1	
<b>Special transactions trade</b>	<b>44.9</b>	<b>31.3</b>	<b>70.7</b>	<b>-30.3</b>	<b>18.6</b>	<b>-13.6</b>	<b>134.3</b>	<b>9.7</b>	<b>11.9</b>	
<b>Unallocated BOP adjustments</b>	<b>138.9</b>	<b>143.3</b>	<b>3.9</b>	<b>3.2</b>	<b>5.2</b>	<b>4.4</b>	<b>546.2</b>	<b>18.4</b>	<b>85.0</b>	
<b>Total exports</b>	<b>10,374.4</b>	<b>10,093.2</b>	<b>7.6</b>	<b>-2.7</b>	<b>730.5</b>	<b>-281.2</b>	<b>39,761.0</b>	<b>12.7</b>	<b>4,485.7</b>	

Table 4

## Imports by Commodity

April 1985

Seasonally Adjusted, Balance of Payments Basis

	Period-to-Period Change									
	Mar.		Apr.		Mar.		Apr.		Year-to-	Change Over
	\$ millions		%	%	\$ millions		%	\$ millions	%	\$ millions
<b>Live animals</b>	<b>10.0</b>	<b>11.8</b>	<b>17.6</b>	<b>18.0</b>	<b>1.5</b>	<b>1.8</b>		<b>36.6</b>	<b>2.2</b>	<b>0.8</b>
<b>Food, feed, beverages and tobacco</b>	<b>492.5</b>	<b>516.1</b>	<b>-3.2</b>	<b>4.8</b>	<b>-16.3</b>	<b>23.6</b>		<b>1,994.0</b>	<b>8.8</b>	<b>161.8</b>
Meat and meat preparations	37.2	42.4	-19.8	14.0	-9.2	5.2		167.1	18.1	25.6
Fish and marine animals	45.4	54.1	8.1	19.2	3.4	8.7		183.8	17.9	27.9
Fresh fruits and berries	77.6	74.4	-6.3	-4.1	-5.2	-3.2		311.7	12.9	35.5
Dried fruits, fruits and fruit preparations	43.3	44.3	2.6	2.3	1.1	1.0		175.4	7.0	11.4
Fresh vegetables	44.3	48.3	-2.6	9.0	-1.2	4.0		182.6	0.0	0.0
Other vegetables and vegetable prep.	23.1	28.6	-10.8	23.8	-2.8	5.5		98.2	-5.7	-5.9
Cocoa, coffee, tea and other food prep.	78.9	89.2	-11.9	13.1	-10.7	10.3		330.2	4.6	14.4
Dairy products, eggs and honey	12.3	11.3	7.9	-8.1	0.9	-1.0		45.7	4.8	2.1
Corn (maize) shelled	8.2	13.2	-1.2	61.0	-0.1	5.0		41.8	100.0	20.9
Other cereals and cereal preparations	17.5	21.4	-13.4	22.3	-2.7	3.9		82.2	-5.4	-4.7
Sugar and sugar preparations	44.5	34.1	10.1	-23.4	4.1	-10.4		154.8	27.7	33.6
Fodder, feed, excluding unmilled cereal	16.9	20.2	0.0	19.5	0.0	3.3		75.0	1.9	1.4
Beverages	39.3	31.1	11.8	-20.9	4.1	-8.2		133.5	-0.3	-0.4
Tobacco	4.0	3.7	110.5	-7.5	2.1	-0.3		12.2	2.5	0.3
<b>Crude materials, inedible</b>	<b>570.8</b>	<b>441.3</b>	<b>27.4</b>	<b>-22.7</b>	<b>122.9</b>	<b>-129.5</b>		<b>1,944.2</b>	<b>-21.1</b>	<b>-518.9</b>
Metals in ores, concentrates and scrap	85.8	77.3	28.6	-9.9	19.1	-8.5		315.7	12.3	34.5
Coal and other related products	81.7	61.2	15.6	-25.1	11.0	-20.5		256.7	-26.8	-93.9
Crude petroleum	244.0	169.7	36.5	-30.5	65.3	-74.3		821.5	-36.1	-463.5
Crude animal products	21.5	22.2	1.4	3.3	0.3	0.7		84.0	8.2	6.4
Crude vegetable products	36.5	37.1	-16.9	1.6	-7.4	0.6		154.3	-6.0	-9.8
Crude wood products	20.8	13.2	35.1	-36.5	5.4	-7.6		65.5	26.2	13.6
Cotton	8.0	7.1	-11.1	-11.3	-1.0	-0.9		31.7	-18.7	-7.3
Wool and man-made fibres	11.9	15.6	1.7	31.1	0.2	3.7		53.0	-7.3	-4.2
Crude non-metallic minerals	60.7	37.8	98.4	-37.7	30.1	-22.9		161.8	3.4	5.3
<b>Fabricated materials, inedible</b>	<b>1,532.7</b>	<b>1,484.4</b>	<b>12.3</b>	<b>-3.2</b>	<b>168.1</b>	<b>-48.3</b>		<b>5,901.7</b>	<b>13.8</b>	<b>717.3</b>
Wood fabricated materials	55.4	50.2	-3.0	-9.4	-1.7	-5.2		216.0	-1.4	-3.1
Textile fabricated materials	143.1	145.4	4.5	1.6	6.1	2.3		564.0	2.7	14.9
Organic chemicals	127.6	144.7	12.3	13.4	14.0	17.1		496.0	7.0	32.5
Plastic materials	127.4	127.4	4.0	0.0	4.9	0.0		490.0	8.7	39.1
Other chemicals and related prod.	189.9	188.5	-7.3	-0.7	-14.9	-1.4		761.8	6.4	45.8
Petroleum and coal products	147.8	92.3	36.6	-37.6	39.6	-55.5		541.0	17.7	81.2
Steel bars, rods, plates, sheets	91.1	81.7	16.2	-10.3	12.7	-9.4		326.1	14.7	41.7
Other iron and steel products	65.1	69.9	-2.1	7.4	-1.4	4.8		272.0	23.0	50.9
Precious metals including alloys	138.9	141.7	310.9	2.0	105.1	2.8		464.0	137.2	268.4
Other non-ferrous metals and alloys	87.7	87.3	-9.6	-0.5	-9.3	-0.4		368.1	-2.6	-9.9
Metal fabricated basic products	129.8	126.4	4.7	-2.6	5.8	-3.4		501.1	13.5	59.7
Rubber fabricated materials	21.0	17.7	2.9	-15.7	0.6	-3.3		78.2	8.6	6.2
Oils, fats, animal and vegetable	20.7	18.9	8.4	-8.7	1.6	-1.8		76.9	14.8	9.9
Non-metallic minerals	84.8	80.6	11.9	-5.0	9.0	-4.2		318.4	16.5	45.2
Other fabricated materials	102.5	111.5	-3.8	8.8	-4.0	9.0		428.0	8.8	34.7
<b>End products, inedible</b>	<b>5,575.3</b>	<b>5,520.8</b>	<b>-1.0</b>	<b>-1.0</b>	<b>-59.1</b>	<b>-54.5</b>		<b>22,452.4</b>	<b>13.3</b>	<b>2,630.6</b>
Engines, turbines and elec. motors	67.6	73.4	-27.6	8.6	-25.8	5.8		299.9	25.1	60.1
Drilling mining machinery	64.0	67.7	12.3	5.8	7.0	3.7		245.8	33.9	62.2
Excavating machinery	60.9	71.9	-2.4	18.1	-1.5	11.0		243.1	18.8	38.4
Metal working machinery	83.4	92.9	10.5	11.4	7.9	9.5		322.2	24.3	63.0
Other industrial machinery	356.2	347.5	5.9	-2.4	19.9	-8.7		1,375.4	19.7	226.5
Agricultural machinery incl. tractors	125.6	144.5	-8.5	15.0	-11.7	18.9		542.2	-7.1	-41.7
Passenger autos and chassis	935.9	811.9	8.1	-13.2	70.4	-124.0		3,626.0	41.0	1,054.3
Trucks and other motor vehicles	223.0	227.8	2.4	2.2	5.2	4.8		896.2	14.3	112.4
Motor vehicle pts., incl. eng. & eng. pts.	1,270.6	1,328.2	-10.6	4.5	-151.1	57.6		5,488.7	10.8	536.1
Television, radios, phonographs	59.6	70.5	-17.3	18.3	-12.5	10.9		261.2	-5.6	-15.6
Other commun. and related equipment	336.0	303.5	6.1	-9.7	19.3	-32.5		1,257.7	7.0	81.8
Office machines and equipment	380.5	324.8	7.7	-14.6	27.3	-55.7		1,410.8	6.4	84.6
Other equipment and tools	530.8	538.3	0.6	1.4	3.4	7.5		2,118.6	9.4	182.3
Aircraft, engines, parts	186.3	252.4	-16.9	35.5	-37.8	66.1		888.4	12.0	95.1
Other transportation equipment & parts	97.9	110.4	-20.7	12.8	-25.6	12.5		439.8	-5.9	-27.5
Apparel and apparel accessories	159.3	143.0	6.1	-10.2	9.2	-16.3		581.9	9.8	51.7
Footwear	38.7	35.2	2.9	-9.0	1.1	-3.5		156.4	-2.2	-3.6
Printed matter	119.3	111.5	7.7	-6.5	8.5	-7.8		449.3	3.9	17.0
Watches, sporting goods and toys	86.8	73.5	16.4	-15.3	12.2	-13.3		312.0	13.0	35.8
House furnishings	87.7	94.9	5.8	8.2	4.8	7.2		348.7	1.6	5.4
Photographic goods	87.4	74.6	15.0	-14.6	11.4	-12.8		317.2	-9.5	-33.4
Miscellaneous end products	217.6	222.4	-0.5	2.2	-1.0	4.8		870.6	5.6	45.8
<b>Special transactions trade</b>	<b>132.8</b>	<b>145.5</b>	<b>-0.6</b>	<b>9.6</b>	<b>-0.8</b>	<b>12.7</b>		<b>539.8</b>	<b>6.6</b>	<b>33.2</b>
<b>Unallocated BOP adjustments</b>	<b>-166.7</b>	<b>-176.9</b>	<b>4.8</b>	<b>6.1</b>	<b>-7.6</b>	<b>-10.2</b>		<b>-660.4</b>	<b>-15.8</b>	<b>123.5</b>
<b>Total imports</b>	<b>8,147.4</b>	<b>7,942.9</b>	<b>2.6</b>	<b>-2.5</b>	<b>208.7</b>	<b>-204.5</b>		<b>32,208.2</b>	<b>10.8</b>	<b>3,148.3</b>

