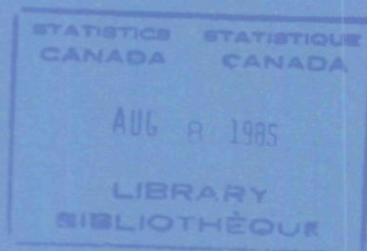


*Not in Cat.*

# Preliminary statement of Canadian international trade

June 1985

Not for release before 7 a.m. E.S.T.  
Thursday, August 8, 1985



### **Data in Many Forms ...**

Statistics Canada disseminates data in a variety of forms. In addition to publications, both standard and special tabulations are offered on computer print-outs, microfiche and microfilm, and magnetic tapes. Maps and other geographic reference materials are available for some types of data. Direct access to aggregated information is possible through CANSIM, Statistics Canada's machine-readable data base and retrieval system.

### **How to Obtain More Information**

Inquiries about this publication and related statistics or services should be directed to:

Trade Information Unit,  
International Trade Division,

Statistics Canada, Ottawa, K1A 0T6 (Telephone: 990-9647) or to the Statistics Canada reference centre in:

St. John's	(772-4073)	Sturgeon Falls	(753-4888)
Halifax	(426-5331)	Winnipeg	(949-4020)
Montréal	(283-5725)	Regina	(359-5405)
Ottawa	(990-8116)	Edmonton	(420-3027)
Toronto	(966-6586)	Vancouver	(666-3691)

Toll-free access is provided in all provinces and territories, for users who reside outside the local dialing area of any of the regional reference centres.

Newfoundland and Labrador	Zenith 0-7037
Nova Scotia, New Brunswick and Prince Edward Island	1-800-565-7192
Quebec	1-800-361-2831
Ontario	1-800-268-1151
Manitoba	1-800-282-8006
Saskatchewan	1(112)800-667-3524
Alberta	1-800-222-6400
British Columbia (South and Central)	112-800-663-1551
Yukon and Northern B.C. (area served by NorthwestTel Inc.)	Zenith 0-8913
Northwest Territories (area served by NorthwestTel Inc.)	Zenith 2-2015

### **How to Order Publications**

This and other Statistics Canada publications may be purchased from local authorized agents and other community bookstores, through the local Statistics Canada offices, or by mail order to Publication Sales and Services, Statistics Canada, Ottawa, K1A 0T6.

**Statistics Canada**  
International Trade Division

Trade of Canada

# **Preliminary statement of Canadian international trade**

June 1985

Published under the authority of  
the Minister of Supply and  
Services Canada

© Minister of Supply  
and Services Canada 1985

May 1985  
5-4110-508

Price: Canada, \$5.00, \$50.00 a year  
Other Countries, \$6.00, \$60.00 a year

Payment to be made in Canadian funds or equivalent

Catalogue 65-001P, Vol. 1, No. 4

ISSN 0828-1998

Ottawa

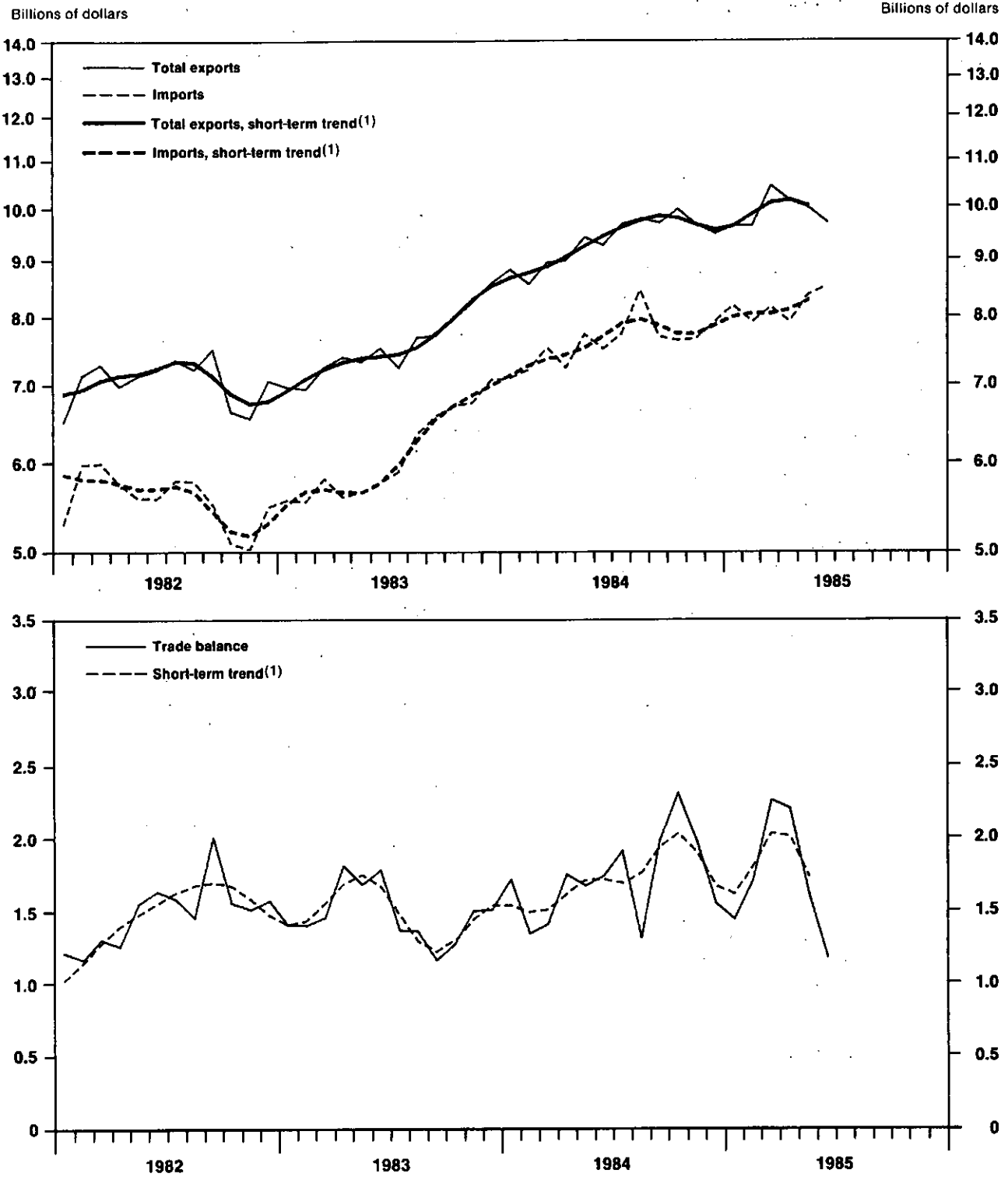


**TABLE OF CONTENTS**

	<b>Page</b>
<b>Charts</b>	<b>5</b>
<b>Commentary</b>	<b>6</b>
<b>Tables</b>	
1. <b>Merchandise Trade of Canada</b>	<b>8</b>
2. <b>Merchandise Trade by Principal Trading Areas</b>	<b>9</b>
3. <b>Total Exports by Commodity</b>	<b>10</b>
4. <b>Imports by Commodity</b>	<b>11</b>



**Imports, Total Exports, and Trade Balance, All Countries, Seasonally Adjusted  
Balance of Payments Basis**



(1) The short-term trend gives a clearer picture of the direction and rate of change of trade by averaging the substantial monthly fluctuations which frequently occur in trade. The trend for the last month is not shown in the charts above since it frequently changes significantly with the addition of succeeding months of data.

## **Preliminary Statement of Canadian International Trade**

June 1985

### **Month-to-Month (Table 1)**

On a seasonally adjusted balance of payments basis, preliminary estimates for June indicate that Canada's exports declined for the third consecutive month, by 3.0% or \$296 million, to a level of \$9.7 billion. Following the record level \$10.4 billion reached in March declines of 2.8% in April and 1.5% in May were posted.

Following a 5.5% increase in May, imports climbed a further 1.7% or \$139 million to a record breaking level of \$8.5 billion.

The net effect of these movements in June was to bring down the merchandise trade surplus to \$1.2 billion, the smallest surplus registered since September 1983.

### **Quarter-to-quarter (Table 1)**

In the second quarter, total exports increased a marginal 0.4% or \$118 million to \$29.8 billion, following an increase of 2.2% in the first quarter. Imports registered much stronger growth in both quarters, rising 2.2% to a level of \$24.8 billion in the second and 4.5% in the first quarter. The net effect on the merchandise trade balance was a coincidentally equivalent decline of \$417 million in each quarter, bringing the balance from a record level \$5.8 billion in the fourth quarter of 1984 to a level of \$5.0 billion in the current quarter.

For the first six months of 1985, the merchandise trade surplus amounted to \$10.4 billion compared to \$9.6 billion for the same period last year.

### **Short-Term Trend (Graphs)**

The short-term trend rate of growth for exports, which provides a less volatile picture of the month-to-month fluctuations in trade, has been moderating steadily since February and turned negative in the most recent month. The short-term trends for exports of automotive products and for industrial goods and materials have been negative for several months. Strong growth in the trend for energy products and more moderate increases in

machinery have tended to offset these movements, but both have been much weaker in the current period. The trend for exports of forest products has been virtually flat throughout 1985, declining slightly in the current period.

With the addition of June data, the short-term trend rate of growth for imports, which had been growing slowly for most of 1985, accelerated in the current period. The trend was reflecting modest growth in machinery and consumer goods and more robust growth in industrial goods and materials. The trend for imports of automotive products, which declined in the March/April period and offset growth in the other major categories, turned positive in the current period. In the most recent months, energy products have demonstrated strong growth.

### **Commodity Analysis**

#### **Total Exports (Seasonally Adjusted)**

#### **Balance of Payments Basis (Table 3)**

Fairly widespread declines among exports for all stages of fabrication contributed to the decline of nearly \$300 million at the total level. Wheat exports dropped 20.4% or \$68 million, accounting for the largest share of the decline of \$93 million in food. Crude materials posted a rise of \$33 million, the only increase among the stages of fabrication: increases in coal and iron ores were partially offset by widespread declines among the other crude material commodities. Within fabricated materials which posted a decline of \$176 million, petroleum and coal products, down \$77 million and precious metals, down \$60 million, were the largest contributors. End products declined \$53 million: declines of \$54 million in trucks and \$90 million in motor vehicle parts were only partially offset by an increase in automobiles of \$81 million.

(continued)



**Imports (Seasonally Adjusted),  
Balance of Payments Basis (Table 4)**

The increase of \$139 million in total imports masks large countervailing movements among the stages of fabrication. Food was down slightly by \$19 million. Crude materials fell \$150 million, largely reflecting the \$165 million decline in crude petroleum. Fabricated materials increased \$159 million, attributable mostly to an increase of \$141 million in petroleum and coal products. The \$108 million increase in end products also hides large countervailing movements: automotive products rose by \$258 million, almost equally split between automobiles and parts while aircraft and office machinery accounted for a partially offsetting decline of \$139 million.

**Trading Partner Analysis (Table 2)**

**Total Exports (Seasonally Adjusted),  
Balance of Payments Basis**

The decline in Canada's export performance in June was due primarily to weaker demand in the U.S. economy. (The American economy has expanded by just about 1% in the first six months.) Declines in exports of automotive

products, petroleum and coal products and precious metals accounted for the bulk of the fall in exports to the U.S. of \$252 million. A decline of \$154 million in exports to "other countries", reflecting primarily declining wheat exports, brought exports to "other countries" to its lowest level since January 1980. Increases to Japan and the United Kingdom helped to counterbalance the decline at the total level.

**Imports (Seasonally Adjusted),  
Balance of Payments Basis (Table 4)**

Increased imports of automotive products was the primary contributor to the rise of \$269 million in imports from the United States. A decline of \$127 million in imports from "other countries", primarily crude oil, lessened the impact on the merchandise trade balance. Imports from the United Kingdom and Other E.E.C. countries were at record levels.

Available on CANSIM: matrices 30, 3643-3644,  
3650-3679, 3685-3714, 3718-3719.  
(See tables on pages 8 to 11)

Order the June 1985 issue of *Summary of Canadian International Trade* (65-001, \$15/ \$150), available the fourth week of August, or contact G. Blaney (613-990-9647), Trade Information Unit, or Judith Frederick (613-990-9784), Trade Measures and Analysis Section, International Trade Division.

**Table 1**  
**Merchandise Trade of Canada**

June 1985

Balance of Payments Basis

	Total Exports <sup>1</sup> Raw	Imports Raw	Total Exports <sup>1</sup> S.A. <sup>3</sup> \$ millions	Imports S.A. <sup>3</sup>	Balance S.A. <sup>3</sup>	Period-to-Period Change <sup>2</sup>		
						Total Exports <sup>1</sup>	Imports	Balance
						S.A. <sup>3</sup> %	S.A. <sup>3</sup> %	S.A. <sup>3</sup> \$ millions
1979	65,582	61,156	65,582	61,156	4,425	22.9	24.7	108
1980	76,680	67,901	76,680	67,901	8,779	16.9	11.0	4,354
1981	84,468	77,140	84,468	77,140	7,328	10.2	13.6	-1,451
1982	84,540	66,726	84,540	66,726	17,814	0.1	-13.5	10,486
1983	90,825	73,120	90,825	73,120	17,705	7.4	9.6	-109
1984	112,118	91,450	112,118	91,450	20,667	23.4	25.1	2,963
<b>1983</b>								
First Quarter	20,531	16,593	21,133	16,872	4,261	4.6	8.3	-370
Second Quarter	23,506	18,414	22,242	16,963	5,279	5.2	0.5	1,018
Third Quarter	21,533	17,867	22,655	18,772	3,883	1.9	10.7	-1,396
Fourth Quarter	25,253	20,246	24,795	20,514	4,281	9.4	9.3	398
<b>1984</b>								
First Quarter	25,776	21,818	26,298	21,832	4,465	6.1	6.4	184
Second Quarter	29,341	24,161	27,642	22,479	5,163	5.1	3.0	698
Third Quarter	27,663	22,696	29,108	23,898	5,210	5.3	6.3	47
Fourth Quarter	29,338	22,775	29,070	23,241	5,829	-0.1	-2.8	619
<b>1985</b>								
First Quarter	28,814	23,694	29,695	24,283	5,412	2.2	4.5	-417
Second Quarter	31,497	26,631	29,813	24,819	4,995	0.4	2.2	-417
<b>1984</b>								
January	8,244	6,530	8,806	7,090	1,716	2.8	0.4	207
February	8,353	7,226	8,548	7,205	1,343	-2.9	1.6	-373
March	9,178	8,062	8,944	7,537	1,407	4.6	4.6	65
April	9,107	7,820	8,978	7,228	1,750	0.4	-4.1	343
May	10,258	8,509	9,409	7,736	1,673	4.8	7.0	-77
June	9,976	7,832	9,256	7,516	1,740	-1.6	-2.8	68
July	9,207	7,515	9,661	7,747	1,914	4.4	3.1	174
August	8,924	8,026	9,763	8,453	1,310	1.1	9.1	-604
September	9,533	7,154	9,683	7,699	1,984	-0.8	-8.9	674
October	10,250	8,150	9,950	7,643	2,307	2.8	-0.7	322
November	10,114	7,725	9,644	7,670	1,974	-3.1	0.4	-333
December	8,974	6,900	9,475	7,928	1,547	-1.8	3.4	-427
<b>1985</b>								
January	9,118	7,655	9,634	8,193	1,441	1.7	3.3	-106
February	9,128	7,572	9,632	7,923	1,709	0.0	-3.3	267
March	10,568	8,467	10,428	8,168	2,260	8.3	3.1	551
April	10,404	8,896	10,138	7,933	2,205	-2.8	-2.9	-56
May	10,768	9,052	9,986	8,373	1,613	-1.5	5.5	-592
June	10,325	8,683	9,689	8,512	1,177	-3.0	1.7	-435
<b>Year to date</b>								
1984	55,116	45,979	53,940	44,311	9,629	24.4	31.0	88
1985	60,311	50,325	59,508	49,102	10,406	10.3	10.8	778

<sup>1</sup> Total Exports + Domestic Exports + Re-exports.<sup>2</sup> Year to year, quarter to quarter, month to month.<sup>3</sup> Seasonally Adjusted

Note: Due to rounding monthly data may not add up to quarterly data and quarterly data may not add up to annual data.

**Table 2**  
**Merchandise Trade by Principal Trading Areas**

June 1985

Seasonally Adjusted, Balance of Payments Basis

	May	June	Period-to-Period Change				Year-to-date	Change Over	
			May	June	May	June		Year-to-date	Change Over
	\$ millions		%	%	\$ millions		%	\$ millions	
<b>Total exports to:</b>									
United States	7,999.4	7,747.3	-1.8	-3.2	-148.1	-252.1	46,677.2	13.4	5,513.6
Japan	383.4	455.9	11.5	18.9	39.7	72.6	2,715.6	5.7	146.8
United Kingdom	183.1	234.7	-6.4	28.1	-12.6	51.5	1,274.5	2.5	30.5
Other E.E.C. Countries	335.2	331.4	-6.0	-1.1	-21.3	-3.8	2,174.4	-1.2	-25.8
Other O.E.C.D. Countries	147.9	137.4	-31.8	-7.1	-69.0	-10.5	1,107.7	13.0	127.3
Other Countries	936.6	782.8	6.7	-16.4	58.5	-153.8	5,559.1	-3.9	-223.8
<b>Total</b>	<b>9,985.5</b>	<b>9,689.4</b>	<b>-1.5</b>	<b>-3.0</b>	<b>-152.9</b>	<b>-296.1</b>	<b>59,508.5</b>	<b>10.3</b>	<b>5,568.5</b>
<b>Imports from:</b>									
United States	5,812.3	6,081.3	-1.4	4.6	-79.6	269.0	35,625.8	11.8	3,752.0
Japan	515.5	456.2	24.4	-11.5	101.0	-59.3	2,749.5	7.2	185.7
United Kingdom	246.0	273.0	33.5	11.0	61.7	27.0	1,149.5	3.5	39.3
Other E.E.C. Countries	587.0	627.0	14.3	6.8	73.2	40.0	3,235.9	15.9	442.9
Other O.E.C.D. Countries	212.9	202.2	-0.5	-5.0	-1.0	-10.7	1,213.7	11.9	128.8
Other Countries	999.3	872.6	39.8	-12.7	284.3	-126.8	5,127.6	5.0	241.9
<b>Total</b>	<b>8,373.0</b>	<b>8,512.3</b>	<b>5.5</b>	<b>1.7</b>	<b>439.5</b>	<b>139.3</b>	<b>49,102.0</b>	<b>10.8</b>	<b>4,790.6</b>
<b>Balance with:</b>									
United States	2,187.1	1,665.9			-68.5	-521.1	11,051.4		1,761.6
Japan	-132.2	-0.3			-61.3	131.9	-33.9		-39.0
United Kingdom	-62.8	-38.3			-74.2	24.5	124.9		-8.8
Other E.E.C. Countries	-251.8	-295.6			-94.5	-43.8	-1,061.5		-468.6
Other O.E.C.D. Countries	-65.0	-64.8			-68.0	0.2	-106.1		-1.5
Other Countries	-62.8	-89.8			-225.8	-27.0	431.5		-465.7
<b>Total</b>	<b>1,612.5</b>	<b>1,177.2</b>			<b>-592.4</b>	<b>-435.4</b>	<b>10,406.4</b>		<b>777.9</b>

**Table 3**  
**Total Exports by Commodity**

June 1985

Seasonally Adjusted, Balance of Payments Basis

			Period-to-Period Change				Year-to-Date	Change Over	
	May	June	May	June	May	June		Year-to-Date	Previous Year
	\$ millions		%	%	\$ millions		\$ millions	%	\$ millions
<b>Live animals</b>	<b>42.3</b>	<b>39.9</b>	<b>-13.1</b>	<b>-5.7</b>	<b>-6.4</b>	<b>-2.4</b>	<b>294.9</b>	<b>34.7</b>	<b>76.0</b>
<b>Food, feed, beverages and tobacco</b>	<b>758.2</b>	<b>665.5</b>	<b>0.3</b>	<b>-12.2</b>	<b>2.5</b>	<b>-92.7</b>	<b>4,342.0</b>	<b>-12.9</b>	<b>-643.3</b>
Fish and fish preparations	156.0	136.5	17.6	-12.5	23.4	-19.5	831.7	7.7	59.6
Barley	11.3	18.5	-69.7	63.7	-26.0	7.2	191.6	-49.8	-190.2
Wheat	331.1	263.5	10.1	-20.4	30.4	-67.6	1,715.4	-19.3	-409.7
Wheat flour	5.0	5.5	-39.8	10.0	-3.3	0.5	41.9	-31.8	-19.5
Other cereals unmilled	3.4	3.7	-71.2	8.8	-8.4	0.3	38.8	-53.0	-43.8
Other cereal preparations	17.9	17.0	6.5	-5.0	1.1	-0.9	114.8	-6.0	-7.3
Meat and meat preparations	57.3	65.1	-7.6	13.6	-4.7	7.8	383.5	4.9	18.0
Alcoholic beverages	45.5	36.3	-13.8	-20.2	-7.3	-9.2	278.6	-4.2	-12.1
Other food, feed, beverages and tobacco	130.7	119.4	-2.1	-8.6	-2.8	-11.3	745.8	-4.9	-38.2
<b>Crude materials, inedible</b>	<b>1,685.7</b>	<b>1,718.4</b>	<b>-4.6</b>	<b>1.9</b>	<b>-81.6</b>	<b>32.7</b>	<b>10,215.7</b>	<b>18.9</b>	<b>1,626.3</b>
Rapeseed	52.4	41.9	-13.2	-20.0	-8.0	-10.5	287.0	-33.5	-144.6
Other crude vegetable products	42.5	49.2	6.0	15.8	2.4	6.7	249.4	19.0	39.8
Iron ores, concentrates and scrap	95.5	134.4	-33.5	40.7	-48.1	38.9	793.2	30.4	184.8
Copper ores, concentrates and scrap	37.5	43.4	-2.1	15.7	-0.8	5.9	257.1	2.0	5.0
Nickel ores, concentrates and scrap	45.7	57.1	-30.8	24.9	-20.3	11.4	314.1	10.8	30.6
Zinc ores, concentrates and scrap	23.8	14.2	-17.1	-40.3	-4.9	-9.6	80.8	-38.4	-50.4
Other ores, concentrates and scrap	55.3	69.8	-15.1	26.2	-9.8	14.5	506.7	15.2	66.8
Crude petroleum	584.1	561.7	-11.8	-3.8	-78.0	-22.4	3,097.6	40.5	892.9
Natural gas	372.8	362.4	8.0	-2.8	27.6	-10.4	2,109.8	5.4	108.6
Coal and other bituminous substances	123.0	186.4	5.4	51.5	6.3	63.4	1,000.5	16.2	139.6
Asbestos unmanufactured	55.4	38.4	49.3	-30.7	18.3	-17.0	242.5	-9.9	-26.7
Other crude animal products	26.0	28.5	-4.1	9.6	-1.1	2.5	159.9	-2.1	-3.4
Other crude wood products	21.4	21.4	63.4	0.0	8.3	0.0	151.5	-7.1	-11.6
Other crude non-metallic minerals	132.7	94.0	23.7	-29.2	25.4	-38.7	858.2	83.2	389.8
Other crude materials, inedible	17.6	15.6	7.3	-11.4	1.2	-2.0	107.5	5.4	5.5
<b>Fabricated materials, inedible</b>	<b>3,165.7</b>	<b>2,989.7</b>	<b>-2.1</b>	<b>-5.6</b>	<b>-67.1</b>	<b>-176.0</b>	<b>18,660.2</b>	<b>9.5</b>	<b>1,626.2</b>
Lumber	424.2	369.3	15.3	-12.9	56.4	-54.9	2,211.0	4.9	102.8
Other wood fabricated materials	83.2	81.4	6.5	-2.2	5.1	-1.8	471.6	4.5	20.1
Woodpulp and similar pulp	274.2	266.6	-4.1	-2.8	-11.7	-7.6	1,751.3	2.3	39.8
Newsprint paper	416.9	435.6	-9.7	4.5	-44.9	18.7	2,689.2	21.0	467.2
Other paper and paperboard	116.4	101.8	4.7	-12.5	5.2	-14.6	653.6	7.1	43.5
Inorganic chemicals	130.8	128.1	14.4	-2.1	16.5	-2.7	749.8	19.2	120.6
Organic chemicals	95.9	130.9	-33.9	36.5	-49.1	35.0	772.0	8.2	58.6
Fertilizers and fertilizer materials	121.7	117.5	-7.9	-3.5	-10.4	-4.2	725.4	0.3	1.9
Synthetic rubber and plastics	91.8	91.2	-1.6	-0.7	-1.5	-0.6	581.2	32.8	143.7
Other chemical products	22.3	24.1	-7.9	8.1	-1.9	1.8	168.8	-1.3	-2.3
Petroleum and coal products	341.8	264.6	-4.6	-22.6	-16.4	-77.2	1,720.3	8.1	128.7
Primary iron and steel	16.2	25.5	-14.7	57.4	-2.8	9.3	100.2	-11.1	-12.5
Steel bars, rods, plates, sheets	122.3	103.4	0.2	-15.5	0.3	-18.9	665.9	28.0	145.8
Other iron and steel & alloys	72.3	86.9	-2.7	20.2	-2.0	14.6	494.5	6.7	30.9
Aluminum including alloys	155.0	162.4	-10.6	4.8	-18.4	7.4	985.9	-3.0	-30.1
Copper and alloys	73.5	50.7	6.1	-31.0	4.2	-22.8	355.4	-14.6	-60.9
Nickel and alloys	47.3	31.1	-18.2	-34.2	-10.5	-16.2	304.2	16.1	42.1
Precious metals and alloys	134.3	74.6	11.5	-44.5	13.9	-59.7	742.3	41.1	216.1
Zinc and alloys	57.0	50.1	-4.2	-12.1	-2.5	-6.9	358.4	-0.5	-1.7
Other non-ferrous metals and alloys	16.4	15.6	-3.0	-4.9	-0.5	-0.8	91.8	0.2	0.2
Metal fabricated basic products	74.7	76.0	-0.5	1.7	-0.4	1.3	465.8	16.9	67.3
Electricity	102.9	143.2	-19.5	39.2	-24.9	40.3	717.3	3.8	26.4
Textile fabricated materials	24.5	28.4	2.1	15.9	0.5	3.9	152.5	0.7	1.0
Non-metallic mineral basic products	61.4	63.9	-0.3	4.1	-0.2	2.5	365.2	6.9	23.6
Other fabricated materials	88.9	66.8	48.7	-24.9	29.1	-22.1	366.9	17.2	53.9
<b>End products, inedible</b>	<b>4,155.5</b>	<b>4,102.4</b>	<b>-0.1</b>	<b>-1.3</b>	<b>-3.9</b>	<b>-53.1</b>	<b>24,963.6</b>	<b>12.6</b>	<b>2,796.3</b>
Industrial machinery	301.7	277.5	1.9	-8.0	5.6	-24.2	1,753.9	12.0	188.6
Agricultural machinery including tractors	49.1	58.0	-3.9	18.1	-2.0	8.9	309.5	-16.0	-59.1
Passenger autos and chassis	1,163.2	1,244.0	2.5	6.9	28.2	80.8	6,947.1	10.3	650.6
Trucks and other motor vehicles	533.8	480.0	4.4	-10.1	22.4	-53.8	3,264.5	15.3	433.8
Motor vehicle pts., incl. eng. & eng. pts.	890.5	800.8	-3.8	-10.1	-35.5	-89.7	5,488.5	14.1	677.0
Television, telecommunication equip.	252.9	240.3	0.7	-5.0	1.7	-12.6	1,476.6	23.2	277.6
Aircraft, engines, parts	184.0	216.7	-2.2	17.8	-4.1	32.7	1,094.6	20.5	185.9
Other transportation equipment	113.8	119.8	19.4	5.3	18.5	6.0	573.2	-2.0	-11.7
Office machines and equipment	160.9	147.4	-6.2	-8.4	-10.6	-13.5	990.0	14.0	121.2
Other equipment and tools	219.8	226.5	3.9	3.0	8.2	6.7	1,278.5	19.3	206.9
Other consumer goods	150.4	157.4	-9.3	4.7	-15.5	7.0	937.3	0.9	8.1
Other end products, inedible	135.4	134.1	-13.3	-1.0	-20.8	-1.3	850.2	16.0	117.4
<b>Special transactions trade</b>	<b>33.8</b>	<b>33.7</b>	<b>8.0</b>	<b>-0.3</b>	<b>2.5</b>	<b>-0.1</b>	<b>201.8</b>	<b>-4.0</b>	<b>-8.5</b>
<b>Unallocated BOP adjustments</b>	<b>144.4</b>	<b>139.9</b>	<b>0.8</b>	<b>-3.1</b>	<b>1.1</b>	<b>-4.5</b>	<b>830.5</b>	<b>13.0</b>	<b>95.5</b>
<b>Total exports</b>	<b>9,985.5</b>	<b>9,689.4</b>	<b>-1.5</b>	<b>-3.0</b>	<b>-152.9</b>	<b>-296.1</b>	<b>59,508.4</b>	<b>10.3</b>	<b>5,568.5</b>

**Table 4**  
**Imports by Commodity**  
 June 1985  
 Seasonally Adjusted, Balance of Payments Basis

			Period-to-Period Change				Year-to-Date \$ millions	Change Over Previous Year	
	May	June	May	June	May	June		%	\$ millions
	\$ millions		%	%	\$ millions	\$ millions			
<b>Live animals</b>	<b>11.7</b>	<b>9.0</b>	<b>-0.8</b>	<b>-23.1</b>	<b>-0.1</b>	<b>-2.7</b>	<b>57.3</b>	<b>9.4</b>	<b>4.9</b>
<b>Food, feed, beverages and tobacco</b>	<b>491.1</b>	<b>471.8</b>	<b>-4.8</b>	<b>-3.9</b>	<b>-24.8</b>	<b>-19.3</b>	<b>2,958.3</b>	<b>5.9</b>	<b>164.8</b>
Meat and meat preparations	32.6	24.7	-23.1	-24.2	-9.8	-7.9	224.4	9.6	19.7
Fish and marine animals	40.2	40.6	-25.7	1.0	-13.9	0.4	264.6	11.8	28.0
Fresh fruits and berries	72.2	68.5	-3.0	-5.1	-2.2	-3.7	452.4	11.6	47.2
Dried fruits, fruits and fruit prep.	33.0	50.3	-25.5	52.4	-11.3	17.3	258.7	6.8	16.4
Fresh vegetables	43.1	45.5	-10.8	5.6	-5.2	2.4	271.2	2.6	6.8
Other vegetables and vegetable prep.	30.5	25.2	6.6	-17.4	1.9	-5.3	153.8	-3.5	-5.5
Cocoa, coffee, tea and other food prep.	81.8	91.9	-8.3	12.3	-7.4	10.1	504.0	-1.5	-7.9
Dairy products, eggs and honey	12.0	9.9	6.2	-17.5	0.7	-2.1	67.6	1.2	0.8
Corn (maize) shelled	12.2	9.8	-7.6	-19.7	-1.0	-2.4	64.7	68.5	26.3
Other cereals and cereal preparations	22.4	22.5	4.7	0.4	1.0	0.1	127.1	-3.1	-4.1
Sugar and sugar preparations	47.4	31.5	39.8	-33.5	13.5	-15.9	234.2	21.0	40.7
Fodder, feed, excluding unmilled cereal	19.3	19.4	-4.5	0.5	-0.9	0.1	113.7	-0.3	-0.3
Beverages	42.3	28.3	36.0	-33.1	11.2	-14.0	204.0	-0.7	-1.4
Tobacco	2.1	3.8	-43.2	81.0	-1.6	1.7	18.1	-7.2	-1.4
<b>Crude materials, inedible</b>	<b>792.2</b>	<b>642.3</b>	<b>81.0</b>	<b>-18.9</b>	<b>354.4</b>	<b>-149.9</b>	<b>3,367.1</b>	<b>-11.5</b>	<b>-437.3</b>
Metals in ores, concentrates and scrap	111.7	106.9	45.1	-4.3	34.7	-4.8	526.4	-8.0	-45.8
Coal and other related products	90.2	101.6	59.4	12.6	33.6	11.4	443.9	-22.2	-126.5
Crude petroleum	470.1	305.0	174.4	-35.1	298.8	-165.1	1,598.2	-12.7	-232.8
Crude animal products	19.2	20.8	-13.5	8.3	-3.0	1.6	124.0	-1.6	-2.0
Crude vegetable products	26.7	35.7	-28.0	33.7	-10.4	9.0	216.7	-12.8	-31.8
Crude wood products	14.5	14.7	9.8	1.4	1.3	0.2	94.6	17.5	14.1
Cotton	5.6	5.3	-21.1	-5.4	-1.5	-0.3	42.6	-30.0	-18.3
Wool and man-made fibres	14.3	13.7	-8.3	-4.2	-1.3	-0.6	80.9	-3.1	-2.6
Crude non-metallic minerals	39.9	38.5	5.6	-3.5	2.1	-1.4	239.7	3.6	8.3
<b>Fabricated materials, inedible</b>	<b>1,555.5</b>	<b>1,714.4</b>	<b>4.4</b>	<b>10.2</b>	<b>65.0</b>	<b>158.9</b>	<b>9,246.2</b>	<b>15.1</b>	<b>1,214.1</b>
Wood fabricated materials	46.0	53.7	-7.3	16.7	-3.6	7.7	311.3	-4.9	-16.1
Textile fabricated materials	144.8	158.3	-0.5	9.3	-0.8	13.5	867.9	2.4	20.7
Organic chemicals	126.9	135.0	-12.2	6.4	-17.6	8.1	758.3	6.9	49.0
Plastic materials	127.5	131.4	0.2	3.1	0.3	3.9	749.2	8.2	56.8
Other chemicals and related prod.	197.1	210.1	4.4	6.6	8.3	13.0	1,169.8	6.5	71.9
Petroleum and coal products	167.8	308.4	81.8	83.8	75.5	140.6	1,016.9	46.8	324.4
Steel bars, rods, plates, sheets	94.7	105.1	16.1	11.0	13.1	10.4	525.0	20.4	89.0
Other iron and steel products	70.7	59.0	1.4	-16.5	1.0	-11.7	401.2	16.1	55.5
Precious metals including alloys	115.3	93.9	-22.5	-18.6	-33.5	-21.4	750.1	107.3	388.2
Other non-ferrous metals and alloys	94.1	90.1	7.9	-4.3	6.9	-4.0	551.0	-1.6	-8.8
Metal fabricated basic products	117.7	135.4	-6.7	15.0	-8.5	17.7	756.4	7.2	50.9
Rubber fabricated materials	19.4	20.0	9.0	3.1	1.6	0.6	118.2	6.8	7.5
Oils, fats, animal and vegetable	25.7	15.6	36.0	-39.3	6.8	-10.1	118.2	2.3	2.7
Non-metallic minerals	87.2	85.1	7.5	-2.4	6.1	-2.1	491.2	17.1	71.6
Other fabricated materials	120.6	113.3	8.4	-6.1	9.3	-7.3	661.7	8.4	51.0
<b>End products, inedible</b>	<b>5,566.7</b>	<b>5,674.8</b>	<b>0.9</b>	<b>1.9</b>	<b>50.9</b>	<b>108.1</b>	<b>33,651.1</b>	<b>11.8</b>	<b>3,549.9</b>
Engines, turbines and elec. motors	82.3	63.7	12.6	-22.6	9.2	-18.6	445.7	23.7	85.4
Drilling mining machinery	65.8	72.8	-2.4	10.6	-1.6	7.0	382.0	34.9	98.9
Excavating machinery	78.0	56.1	8.8	-28.1	6.3	-21.9	377.0	25.4	76.3
Metal working machinery	82.8	80.2	-10.1	-3.1	-9.3	-2.6	482.8	21.3	84.8
Other industrial machinery	356.3	377.7	3.1	6.0	10.7	21.4	2,105.6	18.7	331.4
Agricultural machinery incl. tractors	144.8	136.7	0.3	-5.6	0.4	-8.1	823.6	-8.6	-77.9
Passenger autos and chassis	814.3	937.2	0.3	15.1	2.4	122.9	5,379.3	41.6	1,580.9
Trucks and other motor vehicles	263.3	279.5	15.7	6.2	35.7	16.2	1,439.2	19.4	233.9
Motor vehicle pts., incl. eng. & eng. pts.	1,259.4	1,378.1	-5.2	9.4	-69.7	118.7	8,096.8	10.3	757.0
Television, radios, phonographs	63.5	68.0	-9.9	7.1	-7.0	4.5	394.4	-7.5	-31.9
Other commun. and related equipment	318.1	310.3	4.9	-2.5	14.9	-7.8	1,887.0	3.2	58.4
Office machines and equipment	387.4	334.1	19.5	-13.8	63.3	-53.3	2,128.6	0.6	11.7
Other equipment and tools	530.4	559.4	-1.5	5.5	-8.2	29.0	3,207.9	8.6	253.7
Aircraft, engines, parts	217.8	132.4	-13.3	-39.2	-33.5	-85.4	1,236.0	5.6	65.0
Other transportation equipment & parts	121.3	101.9	9.9	-16.0	10.9	-19.4	663.5	-4.9	-34.3
Apparel and apparel accessories	125.0	141.1	-12.6	12.9	-18.0	16.1	848.1	2.9	24.0
Footwear	37.9	43.1	7.7	13.7	2.7	5.2	237.5	-2.5	-6.2
Printed matter	113.4	108.3	1.7	-4.5	1.9	-5.1	671.1	0.4	3.0
Watches, sporting goods and toys	90.1	78.3	22.4	-13.1	16.5	-11.8	480.6	10.5	45.7
House furnishings	91.3	93.0	-3.9	1.9	-3.7	1.7	533.1	0.6	3.0
Photographic goods	80.1	91.7	7.5	14.5	5.6	11.6	488.4	-10.8	-59.1
Miscellaneous end products	243.3	231.2	9.5	-5.0	21.2	-12.1	1,343.0	3.6	46.9
<b>Special transactions trade</b>	<b>127.4</b>	<b>180.2</b>	<b>-8.1</b>	<b>41.4</b>	<b>-11.2</b>	<b>52.8</b>	<b>834.3</b>	<b>8.9</b>	<b>68.1</b>
<b>Unallocated BOP adjustments</b>	<b>-171.6</b>	<b>-180.2</b>	<b>-3.0</b>	<b>5.0</b>	<b>5.3</b>	<b>-8.6</b>	<b>-1,012.2</b>	<b>-18.3</b>	<b>226.0</b>
<b>Total imports</b>	<b>8,373.0</b>	<b>8,512.3</b>	<b>5.5</b>	<b>1.7</b>	<b>439.5</b>	<b>139.3</b>	<b>49,102.1</b>	<b>10.8</b>	<b>4,790.6</b>

