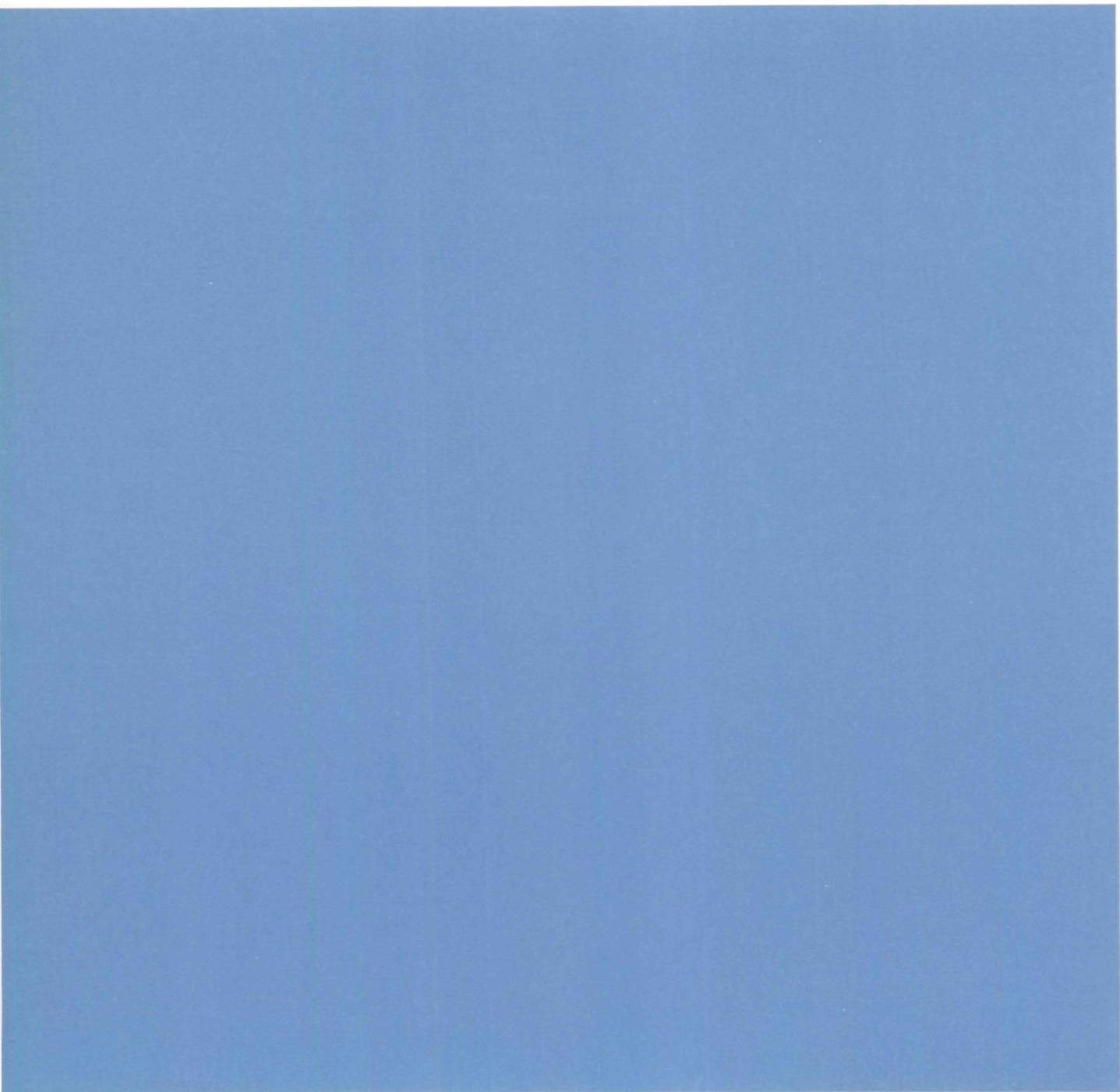
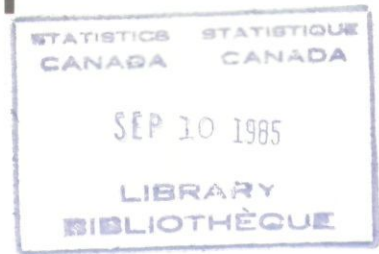


c-3

# Preliminary statement of Canadian international trade

July 1985

Not for release before 7 a.m. E.S.T.  
Tuesday, September 10, 1985



### Data in Many Forms ...

Statistics Canada disseminates data in a variety of forms. In addition to publications, both standard and special tabulations are offered on computer print-outs, microfiche and microfilm, and magnetic tapes. Maps and other geographic reference materials are available for some types of data. Direct access to aggregated information is possible through CANSIM, Statistics Canada's machine-readable data base and retrieval system.

### How to Obtain More Information

Inquiries about this publication and related statistics or services should be directed to:

Trade Information Unit,  
International Trade Division,

Statistics Canada, Ottawa, K1A 0T6 (Telephone: 990-9647) or to the Statistics Canada reference centre in:

St. John's	(772-4073)	Sturgeon Falls	(753-4888)
Halifax	(426-5331)	Winnipeg	(949-4020)
Montréal	(283-5725)	Regina	(359-5405)
Ottawa	(990-8116)	Edmonton	(420-3027)
Toronto	(973-6586)	Vancouver	(666-3691)
Credit Card only (973-8018)			

Toll-free access is provided in all provinces and territories, for users who reside outside the local dialing area of any of the regional reference centres.

Newfoundland and Labrador	Zenith 0-7037
Nova Scotia, New Brunswick and Prince Edward Island	1-800-565-7192
Quebec	1-800-361-2831
Ontario	1-800-268-1151
Manitoba	1-800-282-8006
Saskatchewan	1(112)800-667-3524
Alberta	1-800-222-6400
British Columbia (South and Central)	112-800-663-1551
Yukon and Northern B.C. (area served by NorthwestTel Inc.)	Zenith 0-8913
Northwest Territories (area served by NorthwestTel Inc.)	Zenith 2-2015

### How to Order Publications

This and other Statistics Canada publications may be purchased from local authorized agents and other community bookstores, through the local Statistics Canada offices, or by mail order to Publication Sales and Services, Statistics Canada, Ottawa, K1A 0T6.

1(613)990-8114

1(613)990-8115

**Statistics Canada**  
International Trade Division

Trade of Canada

# **Preliminary statement of Canadian international trade**

July 1985

Published under the authority of  
the Minister of Supply and  
Services Canada

© Minister of Supply  
and Services Canada 1985

May 1985  
5-4110-508

Price: Canada, \$5.00, \$50.00 a year  
Other Countries, \$6.00, \$60.00 a year

Payment to be made in Canadian funds or equivalent

Catalogue 65-001P, Vol. 1, No. 5

ISSN 0828-1998

Ottawa

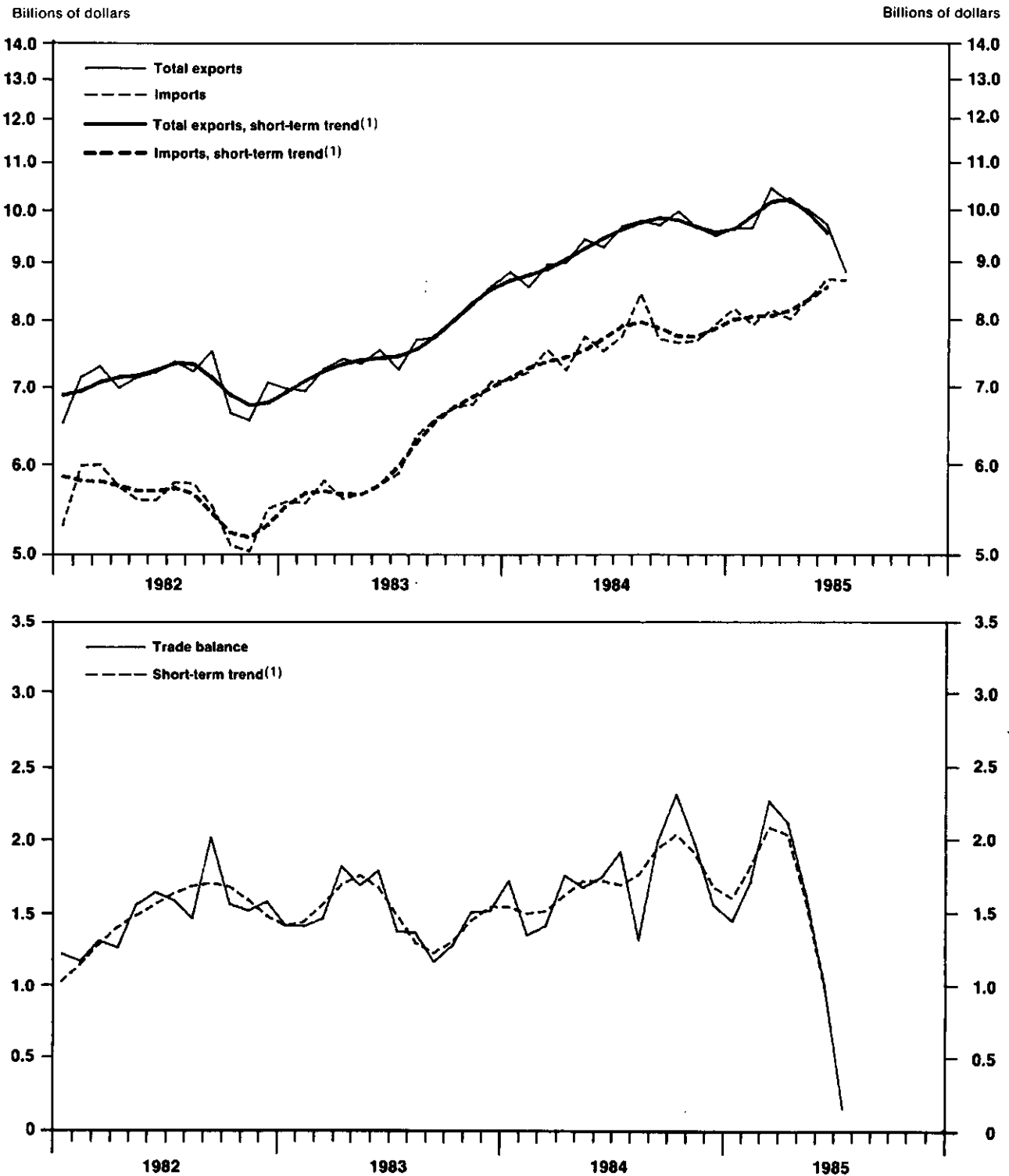


**TABLE OF CONTENTS**

	Page
<b>Charts</b>	5
<b>Commentary</b>	6
<b>Tables</b>	
1. Merchandise Trade of Canada	8
2. Merchandise Trade by Principal Trading Areas	9
3. Total Exports by Commodity	10
4. Imports by Commodity	11



**Imports, Total Exports, and Trade Balance, All Countries, Seasonally Adjusted  
Balance of Payments Basis**



(1) The short-term trend gives a clearer picture of the direction and rate of change of trade by averaging the substantial monthly fluctuations which frequently occur in trade. The trend for the last month is not shown in the charts above since it frequently changes significantly with the addition of succeeding months of data.

## **Preliminary Statement of Canadian International Trade**

### **July 1985**

#### **Month-to-Month (Table 1)**

On a seasonally adjusted balance of payments basis, preliminary estimates of Canadian exports during the month of July indicate a value of \$8.8 billion, a drop of 9.1% or \$872 million from June. It was the lowest value since February 1984 and represents a decline of 15.4% from the record value set in March of this year.

Imports during July remained virtually flat at a level of \$8.7 billion. As a result of the decline in exports, the merchandise trade surplus fell to \$148 million in July, compared to \$1,001 million in June. It was the smallest surplus since April 1980.

#### **Short-Term Trend (Graphs)**

The short-term trend for exports has dropped steadily since April of this year. Short-term trends have declined in every major category, but the strongest downward movements have occurred in the energy sector following sharp increases in the first quarter and in industrial goods and materials which declined significantly for the first time in two years. Automotive products have fallen for several months and are now at the level of July 1984. Exports of forestry products, after recovering slightly in March, continued to fall.

In contrast to exports, the short-term trend for imports continued to rise. Imports of industrial goods and materials have grown at a steady 2% per month for most of this year, while machinery and consumer goods have grown at slower rates. Imports of automotive products started to rise again after falling in March and April. Only imports of agricultural and fishing products have been dropping.

#### **Commodity Analysis**

##### **Total Exports (Seasonally Adjusted)**

##### **Balance of Payments Basis (Table 3)**

The drop in exports in July of \$872 million was widely spread. Exports of crude materials dropped 11.0% due to lower exports of crude

petroleum (down 26.3%), natural gas (down 9.2%) and metal ores (down 19.7%). Exports of refined petroleum and coal products fell 32.8% while exports of chemical products fell 22.4%, contributing to an overall drop of 8.4% for fabricated materials. End products dropped 8.6%, mostly in automobiles (down 8.5%), trucks and other vehicles (down 28.6%) and aircraft (down 26.1%). Exports of wheat fell 35.5% to \$170 million, the lowest value since 1979.

##### **Imports (Seasonally Adjusted)**

##### **Balance of Payments Basis (Table 4)**

Imports of petroleum products fell sharply. Imports of refined petroleum products declined 68.4%, while imports of crude petroleum products were down 37.2%, after being stockpiled during the second quarter to take advantage of deregulation of the industry and the cessation of the compensation programs on June 1st. This decline was offset by an increase of 5.7% in end products, due to a 5.3% increase in automotive parts and a near doubling (93.7%) of aircraft. Imports of precious metals rose 84.1%.

##### **Trading Partner Analysis (Table 2)**

##### **Total Exports (Seasonally Adjusted)**

##### **Balance of Payments Basis**

Three-quarters of the decline in total exports was attributable to a drop of \$651 million in exports to the United States. The drop was due in part to continued slow growth in the U.S. but also reflected a slowdown in shipments of automotive products associated with a U.S. trucking strike in July. Exports to the United Kingdom fell by over one-third to \$146 million, the lowest monthly value since 1978. Exports to non-O.E.C.D. countries dropped 22.5% to \$606 million.

##### **Total Imports (Seasonally Adjusted)**

##### **Balance of Payments Basis**

Imports from the United States rose fractionally to \$6.2 billion. Imports from the United Kingdom remained at record levels, having doubled since March due to imports of (continued on page 7)



crude oil, while imports from other E.E.C. countries fell \$91 million, returning to the May level. Imports from non-O.E.C.D. countries fell \$191 million.

Available on CANSIM: matrices 30, 3643-3644, 3650-3679, 3686-3714, 3718-3719.  
(See tables on page 8 to 11)

Order the July 1985 issue of *Summary of Canadian International Trade* (65-001, \$15/\$150), available the fourth week of September, or contact G. Blaney (613-990-9647), Trade Information Unit, or John Butterill (613-990-9784), Trade Measures and Analysis Section, International Trade Division.

**Table 1**  
**Merchandise Trade of Canada**  
 July 1985  
 Balance of Payments Basis

	Total Exports* Raw	Imports Raw	Total Exports* S.A. \$ millions	Imports S.A.	Balance S.A.	Period-to-Period Change**		
						Total Exports* S.A. %	Imports S.A. %	Balance S.A. \$ millions
1979	65,582	61,156	65,582	61,156	4,425	22.9	24.7	108
1980	76,680	67,901	76,680	67,901	8,779	16.9	11.0	4,354
1981	84,468	77,140	84,468	77,140	7,328	10.2	13.6	-1,451
1982	84,540	66,726	84,540	66,726	17,814	0.1	-13.5	10,486
1983	90,825	73,120	90,825	73,120	17,705	7.4	9.6	-109
1984	112,118	91,450	112,118	91,450	20,667	23.4	25.1	2,963
<b>1983</b>								
First Quarter	20,531	16,593	21,133	16,872	4,261	4.6	8.3	-370
Second Quarter	23,506	18,414	22,242	16,963	5,279	5.2	0.5	1,018
Third Quarter	21,533	17,867	22,655	18,772	3,883	1.9	10.7	-1,396
Fourth Quarter	25,253	20,246	24,795	20,514	4,281	9.4	9.3	398
<b>1984</b>								
First Quarter	25,776	21,818	26,298	21,832	4,465	6.1	6.4	184
Second Quarter	29,341	24,161	27,642	22,479	5,163	5.1	3.0	698
Third Quarter	27,663	22,696	29,108	23,898	5,210	5.3	6.3	47
Fourth Quarter	29,338	22,775	29,070	23,241	5,829	-0.1	-2.8	619
<b>1985</b>								
First Quarter	28,814	23,694	29,695	24,283	5,412	2.2	4.5	-417
Second Quarter	31,497	26,881	29,813	25,069	4,745	0.4	3.2	-667
<b>1984</b>								
January	8,244	6,530	8,806	7,090	1,716	2.8	0.4	207
February	8,353	7,226	8,548	7,205	1,343	-2.9	1.6	-373
March	9,178	8,062	8,944	7,537	1,407	4.6	4.6	65
April	9,107	7,820	8,978	7,228	1,750	0.4	-4.1	343
May	10,258	8,509	9,409	7,736	1,673	4.8	7.0	-77
June	9,976	7,832	9,256	7,516	1,740	-1.6	-2.8	68
July	9,207	7,515	9,661	7,747	1,914	4.4	3.1	174
August	8,924	8,026	9,763	8,453	1,310	1.1	9.1	-604
September	9,533	7,154	9,683	7,699	1,984	-0.8	-8.9	674
October	10,250	8,150	9,950	7,643	2,307	2.8	-0.7	322
November	10,114	7,725	9,644	7,670	1,974	-3.1	0.4	-333
December	8,974	6,900	9,475	7,928	1,547	-1.8	3.4	-427
<b>1985</b>								
January	9,118	7,655	9,634	8,193	1,442	1.7	3.3	-106
February	9,128	7,572	9,632	7,923	1,710	0.0	-3.3	267
March	10,568	8,467	10,428	8,168	2,260	8.3	3.1	551
April	10,404	8,984	10,138	8,021	2,117	-2.8	-1.8	-143
May	10,768	9,039	9,986	8,360	1,626	-1.5	4.2	-492
June	10,325	8,859	9,689	8,688	1,001	-3.0	3.9	-624
July	8,425	8,659	8,817	8,668	148	-9.0	-0.2	-853
<b>Year to date</b>								
1984	64,323	53,495	63,601	52,058	11,543	25.7	31.1	636
1985	68,736	59,234	68,325	58,020	10,305	7.4	11.5	-1,238

\* Total Exports + Domestic Exports + Re-exports.

\*\* Year to year, quarter to quarter, month to month.

**Table 2**  
**Merchandise Trade by Principal Trading Areas**

July 1985

Seasonally Adjusted, Balance of Payments Basis

			Period-to-Period Change				Year-to-date \$ millions	Change Over Previous Year	
	June	July	June	July	June	July		%	\$ millions
	\$ millions		%	%	\$ millions				
<b>Total exports to:</b>									
United States	7,747.3	7,095.9	-3.2	-8.4	-252.1	-651.4	53,773.1	11.3	5,457.7
Japan	455.9	453.1	18.9	-0.6	72.6	-2.9	3,168.7	0.1	3.5
United Kingdom	234.7	145.8	28.1	-37.9	51.5	-88.8	1,420.3	-0.7	-9.9
Other E.E.C. Countries	331.4	353.5	-1.1	6.7	-3.8	22.1	2,527.9	-2.2	-57.4
Other O.E.C.D. Countries	137.4	162.1	-7.1	18.0	-10.5	24.7	1,269.8	9.2	107.1
Other Countries	782.8	606.4	-16.4	-22.5	-153.8	-176.3	6,165.6	-11.2	-776.8
<b>Total</b>	<b>9,689.4</b>	<b>8,816.8</b>	<b>-3.0</b>	<b>-9.0</b>	<b>-296.1</b>	<b>-872.6</b>	<b>68,325.3</b>	<b>7.4</b>	<b>4,724.2</b>
<b>Imports from:</b>									
United States	6,081.3	6,157.3	4.6	1.2	269.0	76.0	41,783.1	11.8	4,415.0
Japan	456.2	507.3	-11.5	11.2	-59.3	51.1	3,256.8	6.8	206.3
United Kingdom	323.2	384.7	31.4	19.0	77.2	61.5	1,584.5	20.4	268.6
Other E.E.C. Countries	647.9	586.3	10.4	-9.5	60.9	-61.6	3,843.1	18.1	589.3
Other O.E.C.D. Countries	202.2	246.7	-5.0	22.0	-10.7	44.5	1,460.4	13.3	171.3
Other Countries	977.3	786.1	-0.9	-19.6	-8.8	-191.2	6,092.5	5.4	311.9
<b>Total</b>	<b>8,688.1</b>	<b>8,668.4</b>	<b>3.9</b>	<b>-0.2</b>	<b>328.4</b>	<b>-19.7</b>	<b>58,020.4</b>	<b>11.5</b>	<b>5,962.4</b>
<b>Balance with:</b>									
United States	1,665.9	938.6			-521.1	-727.4	11,990.0		1,042.7
Japan	-0.3	-54.3			131.9	-54.0	-88.1		-202.8
United Kingdom	-88.5	-238.9			-25.7	-150.3	-164.1		-278.5
Other E.E.C. Countries	-316.5	-232.8			-64.7	83.7	-1,315.2		-646.8
Other O.E.C.D. Countries	-64.8	-84.6			0.2	-19.8	-190.6		-64.1
Other Countries	-194.5	-179.6			-145.0	14.9	73.0		-1,088.7
<b>Total</b>	<b>1,001.4</b>	<b>148.5</b>			<b>-624.5</b>	<b>-852.9</b>	<b>10,304.9</b>		<b>-1,238.2</b>

**Table 3**  
**Total Exports by Commodity**

July 1985

Seasonally Adjusted, Balance of Payments Basis

	Period-to-Period Change						Year-to-Date \$ millions	Change Over Previous Year	
	June	July	June	July	June	July		% \$ millions	% \$ millions
	\$ millions		%	%	\$ millions				
<b>Live animals</b>	<b>39.9</b>	<b>31.8</b>	<b>-5.7</b>	<b>-20.3</b>	<b>-2.4</b>	<b>-8.1</b>	<b>326.7</b>	<b>18.4</b>	<b>50.7</b>
<b>Food, feed, beverages and tobacco</b>	<b>665.5</b>	<b>625.0</b>	<b>-12.2</b>	<b>-6.1</b>	<b>-92.7</b>	<b>-40.5</b>	<b>4,967.0</b>	<b>-18.1</b>	<b>-1,097.9</b>
<b>Fish and fish preparations</b>	<b>136.5</b>	<b>163.5</b>	<b>-12.5</b>	<b>19.8</b>	<b>-19.5</b>	<b>27.0</b>	<b>995.2</b>	<b>5.4</b>	<b>50.7</b>
Barley	18.5	25.1	63.7	35.7	7.2	6.6	216.7	-50.5	-220.9
Wheat	263.5	170.0	-20.4	-35.5	-67.6	-93.5	1,885.4	-29.8	-799.9
Wheat flour	5.5	0.4	10.0	-92.7	0.5	-5.1	42.3	-34.7	-22.5
Other cereals unmilled	3.7	4.5	8.8	21.6	0.3	0.8	43.3	-53.2	-49.3
Other cereal preparations	17.0	17.0	-5.0	0.0	-0.9	0.0	131.8	-8.6	-12.4
Meat and meat preparations	65.1	62.1	13.6	-4.6	7.8	-3.0	445.6	5.0	21.4
Alcoholic beverages	36.3	48.5	-20.2	33.6	-9.2	12.2	327.1	-3.5	-12.0
Other food, feed, beverages and tobacco	119.4	133.8	-8.6	12.1	-11.3	14.4	879.6	-5.7	-53.0
<b>Crude materials, inedible</b>	<b>1,718.4</b>	<b>1,529.4</b>	<b>1.9</b>	<b>-11.0</b>	<b>32.7</b>	<b>-189.0</b>	<b>11,745.1</b>	<b>17.1</b>	<b>1,719.3</b>
Rapeseed	41.9	50.6	-20.0	20.8	-10.5	8.7	337.6	-25.3	-114.4
Other crude vegetable products	49.2	34.1	15.8	-30.7	6.7	-15.1	283.5	18.5	44.2
Iron ores, concentrates and scrap	134.4	108.2	40.7	-19.5	38.9	-26.2	901.4	25.6	183.7
Copper ores, concentrates and scrap	43.4	28.4	15.7	-34.6	5.9	-15.0	285.5	-12.1	-39.3
Nickel ores, concentrates and scrap	57.1	29.4	24.9	-48.5	11.4	-27.7	343.5	9.7	30.3
Zinc ores, concentrates and scrap	14.2	13.7	-40.3	-3.5	-9.6	-0.5	94.5	-37.0	-55.6
Other ores, concentrates and scrap	69.8	76.4	26.2	9.5	14.5	6.6	583.1	5.5	30.5
Crude petroleum	561.7	414.2	-3.8	-26.3	-22.4	-147.5	3,511.8	37.9	965.4
Natural gas	362.4	328.9	-2.8	-9.2	-10.4	-33.5	2,438.7	5.0	116.3
Coal and other bituminous substances	186.4	177.1	51.5	-5.0	63.4	-9.3	1,177.6	15.5	158.0
Asbestos unmanufactured	38.4	39.1	-30.7	1.8	-17.0	0.7	281.6	-11.0	-34.7
Other crude animal products	28.5	21.2	9.6	-25.6	2.5	-7.3	181.1	-5.0	-9.6
Other crude wood products	21.4	27.4	0.0	28.0	0.0	6.0	178.9	-4.9	-9.3
Other crude non-metallic minerals	94.0	160.0	-29.2	70.2	-38.7	66.0	1,018.2	77.4	444.3
Other crude materials, inedible	15.6	20.9	-11.4	34.0	-2.0	5.3	128.4	8.5	10.1
<b>Fabricated materials, inedible</b>	<b>2,989.7</b>	<b>2,737.4</b>	<b>-5.6</b>	<b>-8.4</b>	<b>-176.0</b>	<b>-252.3</b>	<b>21,397.6</b>	<b>6.9</b>	<b>1,389.2</b>
Lumber	369.3	397.5	-12.9	7.6	-54.9	28.2	2,608.5	6.5	159.4
Other wood fabricated materials	81.4	79.2	-2.2	-2.7	-1.8	-2.2	550.8	3.9	20.9
Woodpulp and similar pulp	266.6	281.0	-2.8	5.4	-7.6	14.4	2,032.3	-2.2	-46.1
Newsprint paper	435.6	400.8	4.5	-8.0	18.7	-34.8	3,090.0	16.1	428.7
Other paper and paperboard	101.8	94.8	-12.5	-6.9	-14.6	-7.0	748.4	3.4	24.7
Inorganic chemicals	128.1	97.9	-2.1	-23.6	-2.7	-30.2	847.7	14.4	106.8
Organic chemicals	130.9	97.0	36.5	-25.9	35.0	-33.9	869.0	4.9	40.9
Fertilizers and fertilizer materials	117.5	82.1	-3.5	-30.1	-4.2	-35.4	807.5	-4.8	-40.9
Synthetic rubber and plastics	91.2	78.5	-0.7	-13.9	-0.6	-12.7	659.7	28.7	147.0
Other chemical products	24.1	26.3	8.1	9.1	1.8	2.2	195.1	-1.1	-2.1
Petroleum and coal products	264.6	177.7	-22.6	-32.8	-77.2	-86.9	1,898.0	4.5	82.2
Primary iron and steel	25.5	15.2	57.4	-40.4	9.3	-10.3	115.4	-11.6	-15.1
Steel bars, rods, plates, sheets	103.4	98.7	-15.5	-4.5	-18.9	-4.7	764.6	24.8	152.0
Other iron and steel & alloys	86.9	75.6	20.2	-13.0	14.6	-11.3	570.1	4.9	26.5
Aluminum including alloys	162.4	149.8	4.8	-7.8	7.4	-12.6	1,135.7	-2.6	-30.2
Copper and alloys	50.7	33.3	-31.0	-34.3	-22.8	-17.4	388.7	-16.2	-75.4
Nickel and alloys	31.1	47.6	-34.2	53.1	-16.2	16.5	351.8	14.5	44.5
Precious metals and alloys	74.6	85.0	-44.5	13.9	-59.7	10.4	827.3	26.7	174.2
Zinc and alloys	50.1	48.7	-12.1	-2.8	-6.9	-1.4	407.1	0.8	3.2
Other non-ferrous metals and alloys	15.6	14.4	-4.9	-7.7	-0.8	-1.2	106.2	-2.7	-2.9
Metal fabricated basic products	76.0	70.4	1.7	-7.4	1.3	-5.6	536.2	14.4	67.5
Electricity	143.2	148.4	39.2	3.6	40.3	5.2	865.7	4.8	39.4
Textile fabricated materials	28.4	25.8	15.9	-9.2	3.9	-2.6	178.3	2.2	3.9
Non-metallic mineral basic products	63.9	53.3	4.1	-16.6	2.5	-10.6	418.5	3.4	13.8
Other fabricated materials	66.8	58.5	-24.9	-12.4	-22.1	-8.3	425.4	18.6	66.8
<b>End products, inedible</b>	<b>4,102.4</b>	<b>3,748.7</b>	<b>-1.3</b>	<b>-8.6</b>	<b>-53.1</b>	<b>-353.7</b>	<b>28,712.3</b>	<b>9.8</b>	<b>2,570.4</b>
Industrial machinery	277.5	253.1	-8.0	-8.8	-24.2	-24.4	2,007.0	7.7	142.9
Agricultural machinery including tractors	58.0	42.7	18.1	-26.4	8.9	-15.3	352.2	-18.5	-79.9
Passenger autos and chassis	1,244.0	1,138.5	6.9	-8.5	80.8	-105.5	8,085.6	9.4	695.5
Trucks and other motor vehicles	480.0	342.7	-10.1	-28.6	-53.8	-137.3	3,607.2	8.6	285.2
Motor vehicle pts., incl. eng. & eng. pts.	800.8	847.5	-10.1	5.8	-89.7	46.7	6,336.0	12.7	714.9
Television, telecommunication equip.	240.3	229.9	-5.0	-4.3	-12.6	-10.4	1,706.5	19.4	277.3
Aircraft, engines, parts	216.7	160.2	17.8	-26.1	32.7	-56.5	1,254.8	9.7	111.2
Other transportation equipment	119.8	97.0	5.3	-19.0	6.0	-22.8	670.2	-5.0	-35.5
Office machines and equipment	147.4	133.6	-8.4	-9.4	-13.5	-13.8	1,123.6	8.6	89.3
Other equipment and tools	226.5	214.9	3.0	-5.1	6.7	-11.6	1,493.4	18.6	234.6
Other consumer goods	157.4	158.1	4.7	0.4	7.0	0.7	1,095.4	0.9	10.1
Other end products, inedible	134.1	130.7	-1.0	-2.5	-1.3	-3.4	980.9	14.6	124.9
<b>Special transactions trade</b>	<b>33.7</b>	<b>35.1</b>	<b>-0.3</b>	<b>4.2</b>	<b>-0.1</b>	<b>1.4</b>	<b>236.9</b>	<b>-1.3</b>	<b>-3.1</b>
<b>Unallocated BOP adjustments</b>	<b>139.9</b>	<b>109.4</b>	<b>-3.1</b>	<b>-21.8</b>	<b>-4.5</b>	<b>-30.5</b>	<b>939.9</b>	<b>11.3</b>	<b>95.6</b>
<b>Total exports</b>	<b>9,689.4</b>	<b>8,816.8</b>	<b>-3.0</b>	<b>-9.0</b>	<b>-296.1</b>	<b>-872.6</b>	<b>68,325.2</b>	<b>7.4</b>	<b>4,724.2</b>

**Table 4**  
**Imports by Commodity**  
 July 1985  
 Seasonally Adjusted, Balance of Payments Basis

			Period-to-Period Change				Year-to-Date \$ millions	Change Over Previous Year	
	June	July	June	July	June	July		%	\$ millions
	\$ millions		%	%	\$ millions				
Live animals	9.0	13.8	-23.1	53.3	-2.7	4.8	71.1	20.7	12.2
<b>Food, feed, beverages and tobacco</b>	<b>471.8</b>	<b>467.9</b>	<b>-3.9</b>	<b>-0.8</b>	<b>-19.3</b>	<b>-3.9</b>	<b>3,426.2</b>	<b>4.4</b>	<b>143.4</b>
Meat and meat preparations	24.7	31.8	-24.2	28.7	-7.9	7.1	256.2	6.7	16.2
Fish and marine animals	40.6	37.7	1.0	-7.1	0.4	-2.9	302.3	9.2	25.5
Fresh fruits and berries	68.5	67.3	-5.1	-1.8	-3.7	-1.2	519.7	12.1	56.2
Dried fruits, fruits and fruit prep.	50.3	34.6	52.4	-31.2	17.3	-15.7	293.3	2.4	7.0
Fresh vegetables	45.5	38.5	5.6	-15.4	2.4	-7.0	309.7	-0.7	-2.2
Other vegetables and vegetable prep.	25.2	27.1	-17.4	7.5	-5.3	1.9	180.9	-4.4	-8.3
Cocoa, coffee, tea and other food prep.	91.9	102.4	12.3	11.4	10.1	10.5	606.4	-0.1	-0.9
Dairy products, eggs and honey	9.9	11.5	-17.5	16.2	-2.1	1.6	79.1	2.5	1.9
Corn (maize) shelled	9.8	6.0	-19.7	-38.8	-2.4	-3.8	70.7	59.2	26.3
Other cereals and cereal preparations	22.5	23.1	0.4	2.7	0.1	0.6	150.2	-0.8	-1.2
Sugar and sugar preparations	31.5	28.6	-33.5	-9.2	-15.9	-2.9	262.8	12.5	29.2
Fodder, feed, excluding unmilled cereal	19.4	18.9	0.5	-2.6	0.1	-0.5	132.6	-1.6	-2.1
Beverages	28.3	38.5	-33.1	36.0	-14.0	10.2	242.5	0.0	0.0
Tobacco	3.8	2.0	81.0	-47.4	1.7	-1.8	20.1	-14.8	-3.5
<b>Crude materials, inedible</b>	<b>818.1</b>	<b>595.9</b>	<b>5.0</b>	<b>-27.2</b>	<b>39.2</b>	<b>-222.2</b>	<b>4,213.0</b>	<b>-6.7</b>	<b>-301.4</b>
Metals in ores, concentrates and scrap	106.9	119.1	-4.3	11.4	-4.8	12.2	645.5	-8.7	-61.3
Coal and other related products	101.6	60.4	12.6	-40.6	11.4	-41.2	504.3	-25.9	-176.6
Crude petroleum	480.8	301.9	5.3	-37.2	24.0	-178.9	2,150.1	0.0	-0.7
Crude animal products	20.8	16.0	8.3	-23.1	1.6	-4.8	140.0	-6.3	-9.4
Crude vegetable products	35.7	34.6	33.7	-3.1	9.0	-1.1	251.3	-13.5	-39.3
Crude wood products	14.7	12.1	1.4	-17.7	0.2	-2.6	106.7	13.4	12.6
Cotton	5.3	5.4	-5.4	1.9	-0.3	0.1	48.0	-33.1	-23.7
Wool and man-made fibres	13.7	12.1	-4.2	-11.7	-0.6	-1.6	93.0	-5.8	-5.7
Crude non-metallic minerals	38.5	34.3	-3.5	-10.9	-1.4	-4.2	274.0	1.0	2.6
<b>Fabricated materials, inedible</b>	<b>1,714.4</b>	<b>1,604.9</b>	<b>10.2</b>	<b>-6.4</b>	<b>158.9</b>	<b>-109.5</b>	<b>10,851.1</b>	<b>15.3</b>	<b>1,441.0</b>
Wood fabricated materials	53.7	57.4	16.7	6.9	7.7	3.7	368.7	-3.1	-11.7
Textile fabricated materials	158.3	169.4	9.3	7.0	13.5	11.1	1,037.3	3.8	38.3
Organic chemicals	135.0	135.8	6.4	0.6	8.1	0.8	894.1	6.9	58.1
Plastic materials	131.4	132.5	3.1	0.8	3.9	1.1	881.7	8.2	66.6
Other chemicals and related prod.	210.1	209.7	6.6	-0.2	13.0	-0.4	1,379.5	6.5	84.4
Petroleum and coal products	308.4	97.6	83.8	-68.4	140.6	-210.8	1,114.5	36.7	299.5
Steel bars, rods, plates, sheets	105.1	103.8	11.0	-1.2	10.4	-1.3	628.8	20.7	107.7
Other iron and steel products	59.0	67.5	-16.5	14.4	-11.7	8.5	468.7	13.7	56.4
Precious metals including alloys	93.9	172.8	-18.6	84.0	-21.4	78.9	922.9	137.4	534.1
Other non-ferrous metals and alloys	90.1	96.6	-4.3	7.2	-4.0	6.5	647.6	-1.3	-8.6
Metal fabricated basic products	135.4	125.1	15.0	-7.6	17.7	-10.3	881.5	8.0	65.4
Rubber fabricated materials	20.0	20.6	3.1	3.0	0.6	0.6	138.8	7.0	9.1
Oils, fats, animal and vegetable	15.6	16.4	-39.3	5.1	-10.1	0.8	134.6	3.5	4.6
Non-metallic minerals	85.1	86.0	-2.4	1.1	-2.1	0.9	577.2	16.9	83.4
Other fabricated materials	113.3	113.6	-6.1	0.3	-7.3	0.3	775.3	7.5	53.8
<b>End products, inedible</b>	<b>5,674.8</b>	<b>5,995.6</b>	<b>1.9</b>	<b>5.7</b>	<b>108.1</b>	<b>320.8</b>	<b>39,646.9</b>	<b>12.1</b>	<b>4,289.1</b>
Engines, turbines and elec. motors	63.7	54.1	-22.6	-15.1	-18.6	-9.6	499.8	18.5	78.2
Drilling mining machinery	72.8	75.4	10.6	3.6	7.0	2.6	457.4	35.9	120.9
Excavating machinery	56.1	77.9	-28.1	38.9	-21.9	21.8	454.9	28.6	101.3
Metal working machinery	80.2	96.6	-3.1	20.4	-2.6	16.4	579.4	23.9	111.7
Other industrial machinery	377.7	360.8	6.0	-4.5	21.4	-16.9	2,466.4	17.5	367.4
Agricultural machinery incl. tractors	136.7	147.8	-5.6	8.1	-8.1	11.1	971.4	-7.8	-82.1
Passenger autos and chassis	937.2	966.6	15.1	3.1	122.9	29.4	6,345.9	43.6	1,925.8
Trucks and other motor vehicles	279.5	261.6	6.2	-6.4	16.2	-17.9	1,700.8	18.0	259.8
Motor vehicle pts., incl. eng. & eng. pts.	1,378.1	1,450.9	9.4	5.3	118.7	72.8	9,547.7	10.8	933.5
Television, radios, phonographs	68.0	66.6	7.1	-2.1	4.5	-1.4	461.0	-6.3	-30.8
Other commun. and related equipment	310.3	325.3	-2.5	4.8	-7.8	15.0	2,212.3	2.7	57.7
Office machines and equipment	334.1	347.3	-13.8	4.0	-53.3	13.2	2,475.9	-0.2	-6.2
Other equipment and tools	559.4	562.1	5.5	0.5	29.0	2.7	3,770.0	8.6	297.6
Aircraft, engines, parts	132.4	256.4	-39.2	93.7	-85.4	124.0	1,492.4	8.3	114.2
Other transportation equipment & parts	101.9	109.8	-16.0	7.8	-19.4	7.9	773.3	-5.9	-48.9
Apparel and apparel accessories	141.1	169.9	12.9	20.4	16.1	28.8	1,018.0	4.9	47.1
Footwear	43.1	46.9	13.7	8.8	5.2	3.8	284.4	0.4	1.2
Printed matter	108.3	110.0	-4.5	1.6	-5.1	1.7	781.1	-0.5	-4.0
Watches, sporting goods and toys	78.3	91.4	-13.1	16.7	-11.8	13.1	572.0	11.4	58.5
House furnishings	93.0	95.8	1.9	3.0	1.7	2.8	628.9	1.0	6.5
Photographic goods	91.7	82.5	14.5	-10.0	11.6	-9.2	570.9	-12.1	-78.4
Miscellaneous end products	231.2	239.9	-5.0	3.8	-12.1	8.7	1,583.1	3.9	58.9
<b>Special transactions trade</b>	<b>180.2</b>	<b>155.8</b>	<b>41.4</b>	<b>-13.5</b>	<b>52.8</b>	<b>-24.4</b>	<b>990.1</b>	<b>10.9</b>	<b>97.2</b>
<b>Unallocated BOP adjustments</b>	<b>-180.2</b>	<b>-165.7</b>	<b>5.0</b>	<b>-8.0</b>	<b>-8.6</b>	<b>14.5</b>	<b>-1,177.9</b>	<b>-19.3</b>	<b>280.8</b>
<b>Total imports</b>	<b>8,688.1</b>	<b>8,668.4</b>	<b>3.9</b>	<b>-0.2</b>	<b>328.4</b>	<b>-19.7</b>	<b>58,020.7</b>	<b>11.5</b>	<b>5,962.6</b>

