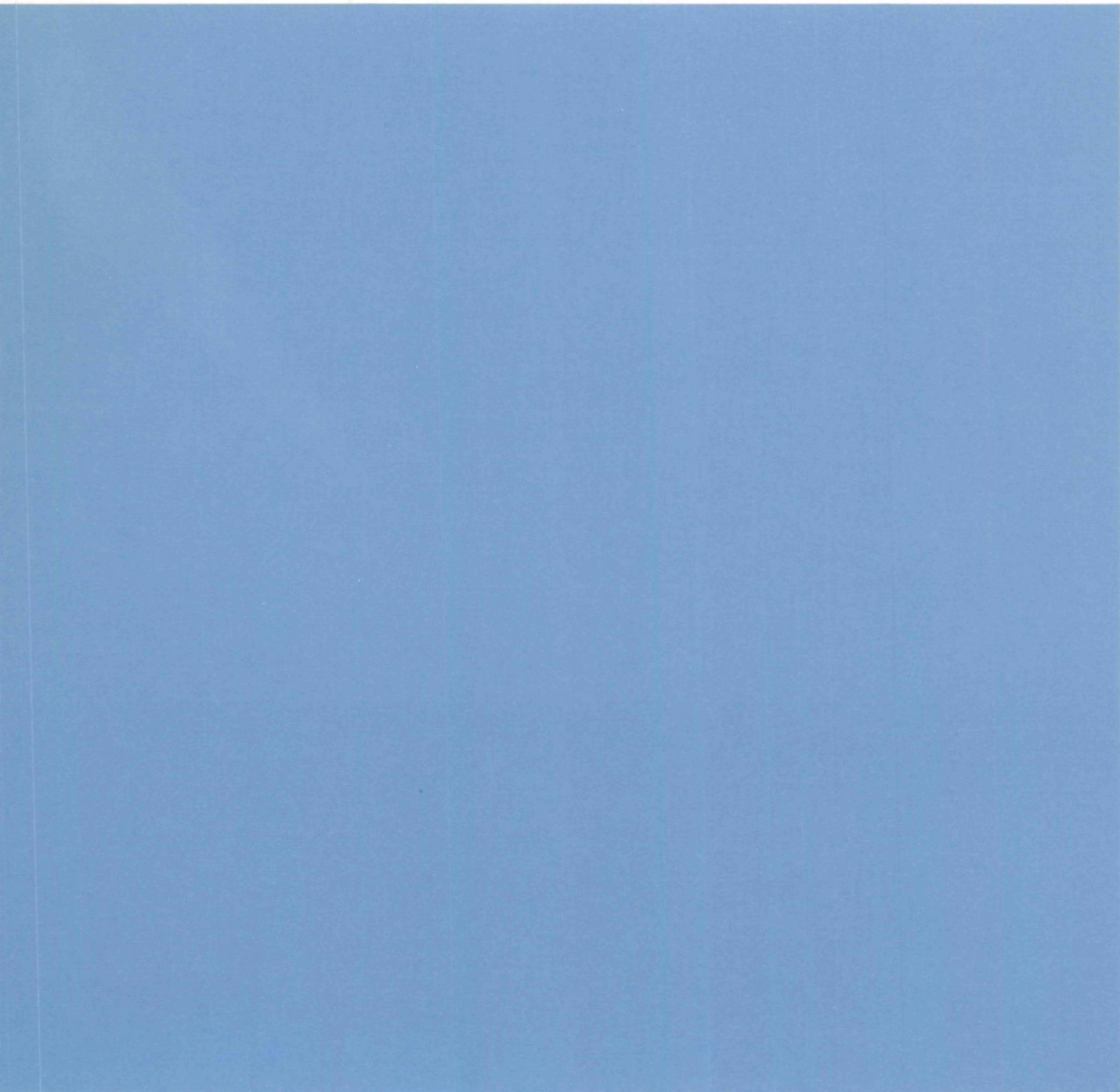


# Preliminary statement of Canadian international trade

September 1985

Not for release before 7 a.m. E.S.T.  
Thursday, November 7, 1985



## Data in Many Forms ...

Statistics Canada disseminates data in a variety of forms. In addition to publications, both standard and special tabulations are offered on computer print-outs, microfiche and microfilm, and magnetic tapes. Maps and other geographic reference materials are available for some types of data. Direct access to aggregated information is possible through CANSIM, Statistics Canada's machine-readable data base and retrieval system.

## How to Obtain More Information

Inquiries about this publication and related statistics or services should be directed to:

Trade Information Unit,  
International Trade Division,

Statistics Canada, Ottawa, K1A 0T6 (Telephone: 990-9647) or to the Statistics Canada reference centre in:

|                             |                           |
|-----------------------------|---------------------------|
| St. John's (772-4073)       | Sturgeon Falls (753-4888) |
| Halifax (426-5331)          | Winnipeg (949-4020)       |
| Montréal (283-5725)         | Regina (359-5405)         |
| Ottawa (990-8116)           | Edmonton (420-3027)       |
| Toronto (973-6586)          | Vancouver (666-3691)      |
| Credit Card only (973-8018) |                           |

Toll-free access is provided in all provinces and territories, for users who reside outside the local dialing area of any of the regional reference centres.

|   |                    |
|---|--------------------|
| Newfoundland and Labrador                                       | Zenith 0-7037      |
| Nova Scotia, New Brunswick<br>and Prince Edward Island          | 1-800-565-7192     |
| Quebec  | 1-800-361-2831     |
| Ontario   | 1-800-268-1151     |
| Manitoba  | 1-800-282-8006     |
| Saskatchewan  | 1(112)800-667-3524 |
| Alberta   | 1-800-222-6400     |
| British Columbia (South<br>and Central)                         | 112-800-663-1551   |
| Yukon and Northern B.C.<br>(area served by<br>NorthwesTel Inc.) | Zenith 0-8913      |
| Northwest Territories<br>(area served by<br>NorthwesTel Inc.)   | Zenith 2-2015      |

## How to Order Publications

This and other Statistics Canada publications may be purchased from local authorized agents and other community bookstores, through the local Statistics Canada offices, or by mail order to Publication Sales and Services, Statistics Canada, Ottawa, K1A 0T6.

1(613)990-8114

1(613)990-8115

**Statistics Canada**  
International Trade Division

Trade of Canada

# **Preliminary statement of Canadian international trade**

September 1985

Published under the authority of  
the Minister of Supply and  
Services Canada

© Minister of Supply  
and Services Canada 1985

November 1985  
5-4110-508

Price: Canada, \$5.00, \$50.00 a year  
Other Countries, \$6.00, \$60.00 a year

Payment to be made in Canadian funds or equivalent

Catalogue 65-001P, Vol. 1, No. 7

ISSN 0828-1998

Ottawa

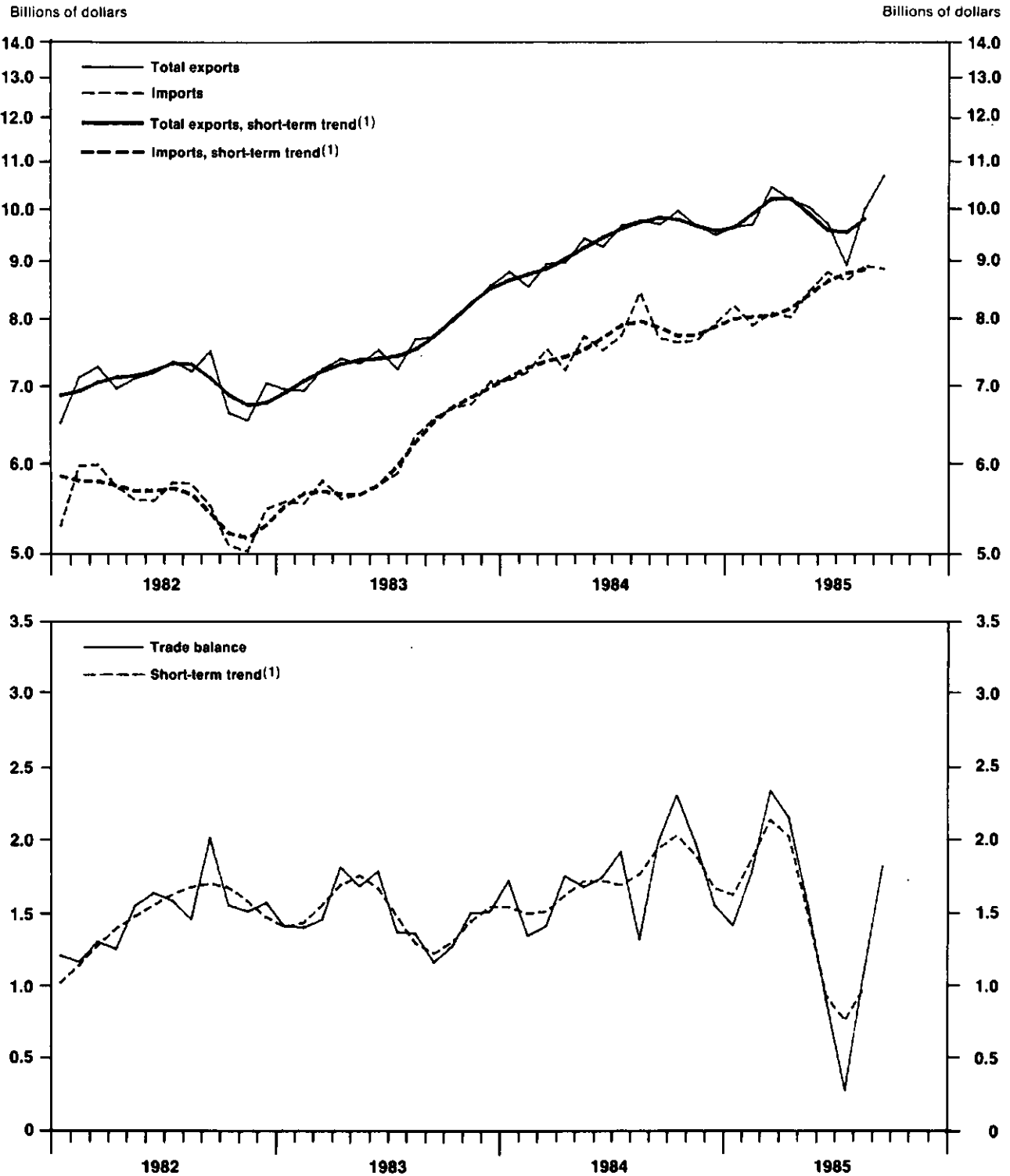


**TABLE OF CONTENTS**

|  | <b>Page</b> |
|--|-------------|
| <b>Charts</b>  | <b>5</b>    |
| <b>Commentary</b>                                      | <b>6</b>    |
| <b>Tables</b>  |             |
| <b>1. Merchandise Trade of Canada</b>                  | <b>8</b>    |
| <b>2. Merchandise Trade by Principal Trading Areas</b> | <b>9</b>    |
| <b>3. Total Exports by Commodity</b>                   | <b>10</b>   |
| <b>4. Imports by Commodity</b>                         | <b>11</b>   |



**Imports, Total Exports, and Trade Balance, All Countries, Seasonally Adjusted  
Balance of Payments Basis**



(1) The short-term trend gives a clearer picture of the direction and rate of change of trade by averaging the substantial monthly fluctuations which frequently occur in trade. The trend for the last month is not shown in the charts above since it frequently changes significantly with the addition of succeeding months of data.

## **Preliminary Statement of Canadian International Trade**

September 1985

### **Month-to-Month (Seasonally Adjusted)**

#### **Balance of Payments Basis**

Preliminary estimates show Canada's exports climbed to a record value of \$10.7 billion in September, up 7.0% over August and a gain of nearly 20% from the July total.

Imports fell a fraction of a per cent, remaining at \$8.9 billion. As a result, the merchandise trade surplus rose to \$1.8 billion, \$0.8 billion over the balance in August.

### **Quarter-to-Quarter**

Exports in the third quarter declined 1.1% to \$29.6 billion, following a slight increase of 0.4% in the second quarter. Imports rose 4.4% in the third quarter to \$26.4 billion, repeating the 4.4% increase in the second quarter and slightly surpassing the 4.3% increase in the first quarter. The net effect on the merchandise trade balance was a decline of more than \$1.4 billion in the third quarter to \$3.2 billion. This was the third consecutive drop in the quarterly trade balance, bringing it to \$2.1 billion below the third quarter balance of last year.

During the first nine months of this year, the cumulative trade surplus totalled \$13.3 billion, down from \$14.8 billion in 1984.

### **Short-Term Trend**

The short-term trend rate of growth for exports, which provides a clearer picture of the month-to-month movements in trade, showed strong positive growth recovering from declines in the second quarter. This growth was most evident in agricultural, and fish products, automotive products and consumer goods, and, to a lesser extent in forestry products and machinery. Energy products and industrial goods and materials continued to decline, but at a slower rate.

The short-term trend for imports continued to show steady growth of 1%-2% each month. Energy imports have returned to normal levels after some stockpiling in the second quarter. Agricultural and fish products, and forestry products showed signs of growth after declines earlier in the year.

### **Commodity Analysis**

#### **Total Exports (Seasonally Adjusted)**

##### **Balance of Payments Basis**

Total exports increased \$696 million in September. A large part of this increase was due to wheat which nearly doubled from August to \$435 million. Another food export, fish products, rose by one-third to a record \$204 million, with much of the increase going to Japan. Exports of crude petroleum climbed \$135 million, up 31.6% from August, while exports of petroleum and coal products increased \$50 million, up 24.9% from the previous month. Iron ores, which have generally fallen since January, showed an increase of \$56 million (72%). Exports of lumber advanced 5.7% and newsprint exports increased 4.0%. Exports of automobiles rose \$133 million to \$1,700 million, a record value for the second month in a row. Exports of parts have not recovered to the same extent, but an increase of \$75 million (8.1%) returned them to levels set at the beginning of the year. Exports of trucks dropped \$127 million from last month's high level and continued the downward movement begun in January. Other declines occurred in precious metals, down 47.8%, electricity, down 28% and industrial machinery, down 10.2%.

#### **Imports (Seasonally Adjusted)**

##### **Balance of Payments Basis**

A drop of \$300 million in automobile parts, down 18% from the high level set in August, was responsible for the decline of \$61 million in total imports. Imports of cars also fell slightly (-1.9%), while imports of trucks rose 38.1% to a record \$336 million. Aircraft imports climbed \$135 million (73.8%) from the low level set in August. Crude petroleum imports were up \$117 million (46.9%). Coal imports, on the other hand, dropped \$27 million (-27.7%) and petroleum and coal products fall \$60 million (-40.0%). Imports of precious metals were up \$44 million, sustaining a notably higher level than last year.



**Trading Partner Analysis**

**Total Exports (Seasonally Adjusted)**

**Balance of Payments Basis**

Exports to the United States rose 5.8% to a record \$8.4 billion. Much of the increase was attributable to increased exports of petroleum and automotive products. Exports to the United Kingdom and the "other E.E.C. countries" rose 27% with increased shipments of minerals, lumber and newsprint. Exports to Japan rose 10.6% while exports to "other O.E.C.D. countries" fell 28.1%.

**Imports (Seasonally Adjusted)**

**Balance of Payments Basis**

Despite increases for trucks and aircraft, imports from the United States fell 2.9%, mainly due a drop in auto parts. Imports from the United Kingdom were up 4.7%, while "other E.E.C. countries" fell 2.5%. Imports from Japan remained unchanged, while imports from "other countries" rose 19.1%.

**Available on CANSIM: matrices 30, 3643-3644, 3650-3679, 3686-3714, 3718-3719.**  
(see tables on pages 8 to 11)

Order the September 1985 issue of *Summary of Canadian International Trade* (65-001, \$15/\$150), available the fourth week of November, or contact G. Blaney (613-990-9647), Trade Information Unit, or John Butterill (613-990-9784), Trade Measures and Analysis Section, International Trade Division.

**Table 1**  
**Merchandise Trade of Canada**  
 September 1985  
 Balance of Payments Basis

|                     | Total Exports <sup>1</sup><br>Raw | Imports<br>Raw | Total Exports <sup>1</sup><br>S.A. <sup>3</sup><br>\$ millions | Imports<br>S.A. <sup>3</sup> | Balance<br>S.A. <sup>3</sup> | Period-to-Period Change <sup>2</sup>                 |                                   |   |
|---------------------|-----------------------------------|----------------|--|------------------------------|------------------------------|--|-----------------------------------|---|
|                     |                                   |                |  |                              |                              | Total Exports <sup>1</sup><br>S.A. <sup>3</sup><br>% | Imports<br>S.A. <sup>3</sup><br>% | Balance<br>S.A. <sup>3</sup><br>\$ millions |
| 1979                | 65,582                            | 61,156         | 65,582   | 61,156                       | 4,425                        | 22.9   | 24.7                              | 108   |
| 1980                | 76,680                            | 67,901         | 76,680   | 67,901                       | 8,779                        | 16.9   | 11.0                              | 4,354                                       |
| 1981                | 84,468                            | 77,140         | 84,468   | 77,140                       | 7,328                        | 10.2   | 13.6                              | -1,451                                      |
| 1982                | 84,540                            | 66,726         | 84,540   | 66,726                       | 17,814                       | 0.1  | -13.5                             | 10,486                                      |
| 1983                | 90,825                            | 73,120         | 90,825   | 73,120                       | 17,705                       | 7.4  | 9.6                               | -109  |
| 1984                | 112,118                           | 91,450         | 112,118  | 91,450                       | 20,667                       | 23.4   | 25.1                              | 2,963                                       |
| <b>1983</b>         |                                   |                |  |                              |                              |  |                                   |   |
| First Quarter       | 20,531                            | 16,593         | 21,133   | 16,872                       | 4,261                        | 4.6  | 8.3                               | -370  |
| Second Quarter      | 23,506                            | 18,414         | 22,242   | 16,963                       | 5,279                        | 5.2  | 0.5                               | 1,018                                       |
| Third Quarter       | 21,533                            | 17,867         | 22,655   | 18,772                       | 3,883                        | 1.9  | 10.7                              | -1,396                                      |
| Fourth Quarter      | 25,253                            | 20,246         | 24,795   | 20,514                       | 4,281                        | 9.4  | 9.3                               | 398   |
| <b>1984</b>         |                                   |                |  |                              |                              |  |                                   |   |
| First Quarter       | 25,776                            | 21,818         | 26,298   | 21,832                       | 4,465                        | 6.1  | 6.4                               | 184   |
| Second Quarter      | 29,341                            | 24,161         | 27,642   | 22,479                       | 5,163                        | 5.1  | 3.0                               | 698   |
| Third Quarter       | 27,663                            | 22,696         | 29,108   | 23,898                       | 5,210                        | 5.3  | 6.3                               | 47  |
| Fourth Quarter      | 29,338                            | 22,775         | 29,070   | 23,241                       | 5,829                        | -0.1   | -2.8                              | 619   |
| <b>1985</b>         |                                   |                |  |                              |                              |  |                                   |   |
| First Quarter       | 28,870                            | 23,633         | 29,752   | 24,234                       | 5,518                        | 2.3  | 4.3                               | -311  |
| Second Quarter      | 31,579                            | 27,055         | 29,885   | 25,293                       | 4,593                        | 0.4  | 4.4                               | -925  |
| Third Quarter       | 27,861                            | 25,172         | 29,568   | 26,413                       | 3,156                        | -1.1   | 4.4                               | -1,437                                      |
| <b>1984</b>         |                                   |                |  |                              |                              |  |                                   |   |
| January             | 8,244                             | 6,530          | 8,806  | 7,090                        | 1,716                        | 2.8  | 0.4                               | 207   |
| February            | 8,353                             | 7,226          | 8,548  | 7,205                        | 1,343                        | -2.9   | 1.6                               | -373  |
| March               | 9,178                             | 8,062          | 8,944  | 7,537                        | 1,407                        | 4.6  | 4.6                               | 65  |
| April               | 9,107                             | 7,820          | 8,978  | 7,228                        | 1,750                        | 0.4  | -4.1                              | 343   |
| May                 | 10,258                            | 8,509          | 9,409  | 7,736                        | 1,673                        | 4.8  | 7.0                               | -77   |
| June                | 9,976                             | 7,832          | 9,256  | 7,516                        | 1,740                        | -1.6   | -2.8                              | 68  |
| July                | 9,207                             | 7,515          | 9,661  | 7,747                        | 1,914                        | 4.4  | 3.1                               | 174   |
| August              | 8,924                             | 8,026          | 9,763  | 8,453                        | 1,310                        | 1.1  | 9.1                               | -604  |
| September           | 9,533                             | 7,154          | 9,683  | 7,699                        | 1,984                        | -0.8   | -8.9                              | 674   |
| October             | 10,250                            | 8,150          | 9,950  | 7,643                        | 2,307                        | 2.8  | -0.7                              | 322   |
| November            | 10,114                            | 7,725          | 9,644  | 7,670                        | 1,974                        | -3.1   | 0.4                               | -333  |
| December            | 8,974                             | 6,900          | 9,475  | 7,928                        | 1,547                        | -1.8   | 3.4                               | -427  |
| <b>1985</b>         |                                   |                |  |                              |                              |  |                                   |   |
| January             | 9,118                             | 7,688          | 9,634  | 8,225                        | 1,409                        | 1.7  | 3.7                               | -138  |
| February            | 9,170                             | 7,546          | 9,674  | 7,903                        | 1,771                        | 0.4  | -3.9                              | 361   |
| March               | 10,581                            | 8,400          | 10,443   | 8,106                        | 2,337                        | 7.9  | 2.6                               | 566   |
| April               | 10,443                            | 8,996          | 10,177   | 8,031                        | 2,146                        | -2.5   | -0.9                              | -190  |
| May                 | 10,809                            | 9,127          | 10,023   | 8,470                        | 1,553                        | -1.5   | 5.5                               | -593  |
| June                | 10,328                            | 8,932          | 9,685  | 8,792                        | 893                          | -3.4   | 3.8                               | -660  |
| July                | 8,509                             | 8,631          | 8,917  | 8,645                        | 272                          | -7.9   | -1.7                              | -620  |
| August              | 8,864                             | 8,130          | 9,978  | 8,915                        | 1,063                        | 11.9   | 3.1                               | 791   |
| September           | 10,488                            | 8,411          | 10,673   | 8,853                        | 1,820                        | 7.0  | -0.7                              | 757   |
| <b>Year to date</b> |                                   |                |  |                              |                              |  |                                   |   |
| 1984                | 82,780                            | 68,675         | 83,048   | 68,209                       | 14,838                       | 25.8   | 29.7                              | 1,415                                       |
| 1985                | 88,310                            | 75,861         | 89,205   | 75,939                       | 13,266                       | 7.4  | 11.3                              | -1,572                                      |

<sup>1</sup> Total Exports = Domestic Exports + Re-exports.

<sup>2</sup> Year to year, quarter to quarter, month to month.

<sup>3</sup> Seasonally Adjusted.

Note: Due to rounding monthly data may not add up to quarterly data and quarterly data may not add up to annual data.

**Table 2**  
**Merchandise Trade by Principal Trading Areas**  
 September 1985  
 Seasonally Adjusted, Balance of Payments Basis

|                          | Aug.<br>\$ millions | Sept.           | Period-to-Period Change |             |                     |              | Year-to-<br>date<br>\$ millions | Change Over<br>Previous Year |                 |
|--------------------------|---------------------|-----------------|-------------------------|-------------|---------------------|--------------|---------------------------------|------------------------------|-----------------|
|                          |                     |                 | Aug.<br>%               | Sept.<br>%  | Aug.<br>\$ millions | Sept.        |                                 | %                            | \$ millions     |
| <b>Total exports to:</b> |                     |                 |                         |             |                     |              |                                 |                              |                 |
| United States            | 7,976.0             | 8,439.5         | 10.8                    | 5.8         | 779.5               | 463.5        | 70,338.8                        | 11.4                         | 7,207.6         |
| Japan                    | 490.6               | 542.6           | 10.1                    | 10.6        | 45.1                | 52.1         | 4,195.2                         | 2.5                          | 102.6           |
| United Kingdom           | 179.2               | 223.6           | 23.6                    | 24.8        | 34.2                | 44.4         | 1,816.3                         | -3.0                         | -56.1           |
| Other E.E.C. Countries   | 304.4               | 391.3           | -12.7                   | 28.5        | -44.3               | 86.9         | 3,245.9                         | -3.2                         | -105.9          |
| Other O.E.C.D. Countries | 235.5               | 169.4           | 39.3                    | -28.1       | 66.5                | -66.1        | 1,695.0                         | 11.3                         | 171.9           |
| Other Countries          | 792.0               | 906.8           | 29.2                    | 14.5        | 179.2               | 114.8        | 7,914.1                         | -12.8                        | -1,162.7        |
| <b>Total</b>             | <b>9,977.6</b>      | <b>10,673.2</b> | <b>11.9</b>             | <b>7.0</b>  | <b>1060.1</b>       | <b>695.6</b> | <b>89,205.3</b>                 | <b>7.4</b>                   | <b>6,157.5</b>  |
| <b>Imports from:</b>     |                     |                 |                         |             |                     |              |                                 |                              |                 |
| United States            | 6,416.9             | 6,227.9         | 4.5                     | -2.9        | 277.3               | -189.1       | 54,589.2                        | 11.4                         | 5,571.7         |
| Japan                    | 547.3               | 548.6           | 7.6                     | 0.2         | 38.7                | 1.2          | 4,365.9                         | 7.6                          | 307.7           |
| United Kingdom           | 315.7               | 330.5           | -1.1                    | 4.7         | -3.6                | 14.8         | 2,220.9                         | 32.3                         | 542.5           |
| Other E.E.C. Countries   | 641.3               | 625.1           | 8.9                     | -2.5        | 52.2                | -16.2        | 5,128.3                         | 19.7                         | 844.9           |
| Other O.E.C.D. Countries | 291.4               | 285.5           | 2.5                     | -2.0        | 7.1                 | -5.9         | 2,118.7                         | 22.2                         | 384.2           |
| Other Countries          | 701.9               | 835.7           | -12.7                   | 19.1        | -102.1              | 133.8        | 7,516.3                         | 1.1                          | 78.9            |
| <b>Total</b>             | <b>8,914.6</b>      | <b>8,853.2</b>  | <b>3.1</b>              | <b>-0.7</b> | <b>269.6</b>        | <b>-61.4</b> | <b>75,939.4</b>                 | <b>11.3</b>                  | <b>7,729.9</b>  |
| <b>Balance with:</b>     |                     |                 |                         |             |                     |              |                                 |                              |                 |
| United States            | 1,559.1             | 2,211.7         |                         |             | 502.3               | 652.6        | 15,749.6                        |                              | 1,635.9         |
| Japan                    | -56.8               | -6.0            |                         |             | 6.4                 | 50.8         | -170.7                          |                              | -205.1          |
| United Kingdom           | -136.5              | -106.9          |                         |             | 37.8                | 29.6         | -404.6                          |                              | -598.5          |
| Other E.E.C. Countries   | -337.0              | -233.8          |                         |             | -96.6               | 103.1        | -1,882.5                        |                              | -950.8          |
| Other O.E.C.D. Countries | -55.9               | -116.1          |                         |             | 59.4                | -60.2        | -423.6                          |                              | -212.3          |
| Other Countries          | 90.1                | 71.1            |                         |             | 281.3               | -19.0        | 397.8                           |                              | -1,241.6        |
| <b>Total</b>             | <b>1,063.1</b>      | <b>1,820.0</b>  |                         |             | <b>790.6</b>        | <b>757.0</b> | <b>13,265.9</b>                 |                              | <b>-1,572.4</b> |

**Table 3**  
**Total Exports by Commodity**

September 1985

Seasonally Adjusted, Balance of Payments Basis

|  |                |                 | Period-to-Period Change |            |               |              | Year-to-Date<br>\$ millions | Change Over<br>Previous Year |                |
|--|----------------|-----------------|-------------------------|------------|---------------|--------------|-----------------------------|------------------------------|----------------|
|  | Aug.           | Sept.           | Aug.                    | Sept.      | Aug.          | Sept.        |                             | % \$ millions                | % \$ millions  |
|  | \$ millions    |                 | %                       | %          | \$ millions   |              |                             |                              |                |
| Live animals                               | 31.6           | 19.8            | -0.6                    | -37.3      | -0.2          | -11.8        | 377.9                       | -2.8                         | -11.0          |
| Food, feed, beverages and tobacco          | 665.4          | 935.6           | 7.3                     | 40.6       | 45.2          | 270.2        | 6,568.9                     | -16.5                        | -1,300.7       |
| Fish and fish preparations                 | 152.2          | 203.6           | -6.9                    | 33.8       | -11.3         | 51.4         | 1,351.6                     | 12.1                         | 145.5          |
| Barley                                     | 25.0           | 23.0            | -0.4                    | -8.0       | -0.1          | -2.0         | 264.7                       | -48.2                        | -246.4         |
| Wheat                                      | 221.4          | 435.1           | 33.7                    | 96.5       | 55.8          | 213.7        | 2,540.2                     | -29.5                        | -1,061.6       |
| Wheat flour                                | 11.4           | 3.1             | 2750.0                  | -72.8      | 11.0          | -8.3         | 56.8                        | -28.9                        | -23.1          |
| Other cereals unmilled                     | 3.8            | 7.6             | -5.0                    | 100.0      | -0.2          | 3.8          | 54.2                        | -59.7                        | -80.4          |
| Other cereal preparations                  | 21.2           | 22.3            | 24.7                    | 5.2        | 4.2           | 1.1          | 175.3                       | -4.5                         | -8.2           |
| Meat and meat preparations                 | 63.6           | 67.6            | 2.4                     | 6.3        | 1.5           | 4.0          | 576.8                       | 7.9                          | 42.0           |
| Alcoholic beverages                        | 50.0           | 49.1            | 3.1                     | -1.8       | 1.5           | -0.9         | 427.5                       | 1.6                          | 6.8            |
| Other food, feed, beverages and tobacco    | 116.8          | 124.2           | -12.8                   | 6.3        | -17.1         | 7.4          | 1,121.8                     | -6.3                         | -75.3          |
| Crude materials, inedible                  | 1,495.9        | 1,674.8         | -2.8                    | 12.0       | -43.1         | 178.9        | 14,875.7                    | 16.3                         | 2,081.8        |
| Rapeseed                                   | 43.0           | 44.1            | -15.4                   | 2.6        | -7.8          | 1.1          | 424.9                       | -16.6                        | -84.3          |
| Other crude vegetable products             | 42.7           | 39.0            | 24.5                    | -8.7       | 8.4           | -3.7         | 376.3                       | 22.7                         | 69.5           |
| Iron ores, concentrates and scrap          | 78.7           | 134.9           | -27.0                   | 71.4       | -29.1         | 56.2         | 1,118.4                     | 23.6                         | 213.6          |
| Copper ores, concentrates and scrap        | 46.3           | 55.5            | 63.0                    | 19.9       | 17.9          | 9.2          | 395.2                       | 4.2                          | 16.1           |
| Nickel ores, concentrates and scrap        | 39.2           | 45.7            | 33.3                    | 16.6       | 9.8           | 6.5          | 428.4                       | -0.3                         | -1.5           |
| Zinc ores, concentrates and scrap          | 16.0           | 21.3            | 16.8                    | 33.1       | 2.3           | 5.3          | 131.8                       | -36.8                        | -76.9          |
| Other ores, concentrates and scrap         | 65.1           | 55.0            | -15.0                   | -15.5      | -11.5         | -10.1        | 705.2                       | 1.1                          | 7.5            |
| Crude petroleum                            | 425.6          | 560.2           | 1.0                     | 31.6       | 4.1           | 134.6        | 4,425.4                     | 38.6                         | 1,233.0        |
| Natural gas                                | 351.3          | 330.2           | 6.2                     | -6.0       | 20.4          | -21.1        | 3,120.1                     | 4.4                          | 132.7          |
| Coal and other bituminous substances       | 163.5          | 147.3           | -7.7                    | -9.9       | -13.6         | -16.2        | 1,488.4                     | 10.1                         | 136.1          |
| Asbestos unmanufactured                    | 41.9           | 36.8            | 9.1                     | -12.2      | 3.5           | -5.1         | 360.4                       | -7.6                         | -29.8          |
| Other crude animal products                | 31.4           | 32.7            | 48.1                    | 4.1        | 10.2          | 1.3          | 245.2                       | -4.0                         | -10.2          |
| Other crude wood products                  | 19.7           | 20.4            | -29.4                   | 3.6        | -8.2          | 0.7          | 219.3                       | -12.1                        | -30.2          |
| Other crude non-metallic minerals          | 112.6          | 133.8           | -29.6                   | 18.8       | -47.4         | 21.2         | 1,268.4                     | 63.1                         | 490.5          |
| Other crude materials, inedible            | 18.9           | 17.8            | -10.0                   | -5.8       | -2.1          | -1.1         | 167.9                       | 10.2                         | 15.6           |
| Fabricated materials, inedible             | 2,962.3        | 3,005.4         | 7.5                     | 1.5        | 205.4         | 43.1         | 27,457.6                    | 5.0                          | 1,315.1        |
| Lumber                                     | 393.8          | 416.2           | -1.1                    | 5.7        | -4.5          | 22.4         | 3,417.5                     | 7.3                          | 233.1          |
| Other wood fabricated materials            | 91.0           | 96.1            | 14.9                    | 5.6        | 11.8          | 5.1          | 737.9                       | 5.4                          | 38.0           |
| Woodpulp and similar pulp                  | 263.9          | 269.9           | -4.0                    | 2.3        | -11.1         | 6.0          | 2,559.8                     | -9.1                         | -255.6         |
| Newsprint paper                            | 466.3          | 484.9           | 13.6                    | 4.0        | 55.8          | 18.6         | 4,054.7                     | 15.1                         | 530.6          |
| Other paper and paperboard                 | 107.9          | 114.8           | 12.9                    | 6.4        | 12.3          | 6.9          | 977.2                       | 2.6                          | 24.6           |
| Inorganic chemicals                        | 84.3           | 123.5           | -13.3                   | 46.5       | -12.9         | 39.2         | 1,059.5                     | 11.5                         | 109.7          |
| Organic chemicals                          | 118.1          | 92.2            | 28.2                    | -21.9      | 26.0          | -25.9        | 1,074.0                     | 3.2                          | 33.6           |
| Fertilizers and fertilizer materials       | 98.1           | 104.0           | 8.9                     | 6.0        | 8.0           | 5.9          | 1,015.0                     | -9.7                         | -108.9         |
| Synthetic rubber and plastics              | 95.4           | 85.0            | 18.7                    | -10.9      | 15.0          | -10.4        | 844.8                       | 26.9                         | 179.2          |
| Other chemical products                    | 28.6           | 33.2            | 4.0                     | 16.1       | 1.1           | 4.6          | 258.1                       | 1.7                          | 4.4            |
| Petroleum and coal products                | 202.0          | 252.3           | 9.8                     | 24.9       | 18.1          | 50.3         | 2,314.8                     | -0.4                         | -8.4           |
| Primary iron and steel                     | 12.7           | 17.7            | -14.8                   | 39.4       | -2.2          | 5.0          | 145.6                       | -9.5                         | -15.2          |
| Steel bars, rods, plates, sheets           | 88.4           | 79.1            | -10.7                   | -10.5      | -10.6         | -9.3         | 930.9                       | 19.3                         | 150.8          |
| Other iron and steel & alloys              | 94.2           | 84.6            | 25.4                    | -10.2      | 19.1          | -9.6         | 748.4                       | 5.6                          | 40.0           |
| Aluminum including alloys                  | 145.5          | 159.5           | -2.9                    | 9.6        | -4.3          | 14.0         | 1,440.7                     | -3.2                         | -47.9          |
| Copper and alloys                          | 46.1           | 58.7            | 38.4                    | 27.3       | 12.8          | 12.6         | 497.0                       | -17.7                        | -107.2         |
| Nickel and alloys                          | 42.4           | 42.0            | -10.9                   | -0.9       | -5.2          | -0.4         | 436.2                       | 8.9                          | 35.6           |
| Precious metals and alloys                 | 151.3          | 79.0            | 72.9                    | -47.8      | 63.8          | -72.3        | 1,161.6                     | 26.5                         | 243.4          |
| Zinc and alloys                            | 44.2           | 50.3            | -9.2                    | 13.8       | -4.5          | 6.1          | 501.6                       | -0.1                         | -0.3           |
| Other non-ferrous metals and alloys        | 10.9           | 16.7            | -24.3                   | 53.2       | -3.5          | 5.8          | 134.4                       | -5.3                         | -7.5           |
| Metal fabricated basic products            | 76.4           | 82.7            | 8.5                     | 8.2        | 6.0           | 6.3          | 695.3                       | 12.6                         | 78.0           |
| Electricity                                | 146.3          | 105.3           | -1.2                    | -28.0      | -1.8          | -41.0        | 1,117.4                     | 3.2                          | 34.5           |
| Textile fabricated materials               | 28.9           | 27.8            | 12.0                    | -3.8       | 3.1           | -1.1         | 235.0                       | 4.5                          | 10.2           |
| Non-metallic mineral basic products        | 54.2           | 58.9            | 0.4                     | 8.7        | 0.2           | 4.7          | 532.6                       | 1.5                          | 8.1            |
| Other fabricated materials                 | 71.3           | 71.2            | 21.9                    | -0.1       | 12.8          | -0.1         | 568.0                       | 24.7                         | 112.6          |
| End products, inedible                     | 4,687.4        | 4,871.4         | 22.5                    | 3.9        | 862.4         | 184.0        | 38,444.8                    | 11.5                         | 3,978.7        |
| Industrial machinery                       | 322.0          | 289.0           | 27.2                    | -10.2      | 68.9          | -33.0        | 2,616.1                     | 8.8                          | 210.9          |
| Agricultural machinery including tractors  | 54.0           | 70.1            | 26.5                    | 29.8       | 11.3          | 16.1         | 476.3                       | -15.2                        | -85.1          |
| Passenger autos and chassis                | 1,566.4        | 1,699.5         | 31.3                    | 8.5        | 373.8         | 133.1        | 11,405.6                    | 14.6                         | 1,454.2        |
| Trucks and other motor vehicles            | 572.5          | 445.4           | 62.0                    | -22.2      | 219.1         | -127.1       | 4,634.6                     | 5.7                          | 248.7          |
| Motor vehicle pts., incl. eng. & eng. pts. | 924.5          | 999.4           | 7.9                     | 8.1        | 67.3          | 74.9         | 8,299.6                     | 12.7                         | 932.4          |
| Television, telecommunication equip.       | 239.2          | 255.7           | 4.0                     | 6.9        | 9.3           | 16.5         | 2,201.4                     | 15.1                         | 288.2          |
| Aircraft, engines, parts                   | 204.2          | 200.3           | 25.8                    | -1.9       | 41.9          | -3.9         | 1,730.9                     | 17.5                         | 258.2          |
| Other transportation equipment             | 85.2           | 102.8           | -12.2                   | 20.7       | -11.8         | 17.6         | 858.2                       | -2.3                         | -20.4          |
| Office machines and equipment              | 159.2          | 152.2           | 19.2                    | -4.4       | 25.6          | -7.0         | 1,435.0                     | 6.0                          | 80.9           |
| Other equipment and tools                  | 209.7          | 229.2           | -2.5                    | 9.3        | -5.3          | 19.5         | 1,933.4                     | 17.0                         | 280.7          |
| Other consumer goods                       | 172.0          | 184.8           | 9.3                     | 7.4        | 14.6          | 12.8         | 1,452.0                     | 3.2                          | 45.3           |
| Other end products, inedible               | 178.5          | 243.2           | 36.6                    | 36.2       | 47.8          | 64.7         | 1,402.4                     | 25.5                         | 284.8          |
| Special transactions trade                 | 29.3           | 31.9            | -16.5                   | 8.9        | -5.8          | 2.6          | 300.8                       | -8.0                         | -26.1          |
| Unallocated BOP adjustments                | 105.8          | 134.3           | -3.3                    | 26.9       | -3.6          | 28.5         | 1,180.0                     | 11.3                         | 120.1          |
| <b>Total exports</b>                       | <b>9,977.6</b> | <b>10,673.2</b> | <b>11.9</b>             | <b>7.0</b> | <b>1060.1</b> | <b>695.6</b> | <b>89,205.4</b>             | <b>7.4</b>                   | <b>6,157.7</b> |

**Table 4**  
**Imports by Commodity**  
 September 1985  
 Seasonally Adjusted, Balance of Payments Basis

|  | Period-to-Period Change |                |             |              |              |               |                 |              |                |                           |
|--|-------------------------|----------------|-------------|--------------|--------------|---------------|-----------------|--------------|----------------|---------------------------|
|  | Aug.                    |                | Sept.       |              | Aug.         |               | Sept.           |              | Year-to-Date   | Change Over Previous Year |
|  | \$ millions             | %              | \$ millions | %            | \$ millions  | %             | \$ millions     | %            |                |                           |
| <b>Live animals</b>                        | <b>16.9</b>             | <b>7.8</b>     | <b>22.5</b> | <b>-53.8</b> | <b>3.1</b>   | <b>-9.1</b>   | <b>95.8</b>     | <b>29.3</b>  | <b>21.7</b>    |                           |
| <b>Food, feed, beverages and tobacco</b>   | <b>477.1</b>            | <b>503.5</b>   | <b>2.0</b>  | <b>5.5</b>   | <b>9.2</b>   | <b>26.4</b>   | <b>4,406.2</b>  | <b>2.6</b>   | <b>113.2</b>   |                           |
| Meat and meat preparations                 | 30.1                    | 37.4           | -5.6        | 24.3         | -1.8         | 7.3           | 323.8           | 2.8          | 8.9            |                           |
| Fish and marine animals                    | 44.1                    | 38.9           | 17.3        | -11.8        | 6.5          | -5.2          | 385.2           | 5.6          | 20.4           |                           |
| Fresh fruits and berries                   | 66.2                    | 67.5           | -1.6        | 2.0          | -1.1         | 1.3           | 653.4           | 9.6          | 57.3           |                           |
| Dried fruits, fruits and fruit prep.       | 44.0                    | 44.5           | 27.2        | 1.1          | 9.4          | 0.5           | 381.7           | 2.6          | 9.5            |                           |
| Fresh vegetables                           | 47.0                    | 47.9           | 22.1        | 1.9          | 8.5          | 0.9           | 404.6           | -2.6         | -10.9          |                           |
| Other vegetables and vegetable prep.       | 27.4                    | 31.6           | 1.5         | 15.3         | 0.4          | 4.2           | 239.7           | -2.2         | -5.3           |                           |
| Cocoa, coffee, tea and other food prep.    | 88.7                    | 92.6           | -13.4       | 4.4          | -13.7        | 3.9           | 787.7           | -0.5         | -4.2           |                           |
| Dairy products, eggs and honey             | 13.2                    | 10.8           | 14.8        | -18.2        | 1.7          | -2.4          | 103.1           | 2.2          | 2.2            |                           |
| Corn (maize) shelled                       | 6.7                     | 4.8            | 11.7        | -28.4        | 0.7          | -1.9          | 82.2            | 26.7         | 17.3           |                           |
| Other cereals and cereal preparations      | 19.6                    | 24.5           | -15.5       | 25.0         | -3.6         | 4.9           | 194.4           | -2.6         | -5.1           |                           |
| Sugar and sugar preparations               | 38.2                    | 30.3           | 33.6        | -20.7        | 9.6          | -7.9          | 324.9           | 7.6          | 22.9           |                           |
| Fodder, feed, excluding unmilled cereal    | 18.6                    | 21.2           | -1.6        | 14.0         | -0.3         | 2.6           | 172.8           | -1.7         | -2.9           |                           |
| Beverages                                  | 30.0                    | 49.2           | -22.1       | 64.0         | -8.5         | 19.2          | 327.4           | 2.6          | 8.4            |                           |
| Tobacco                                    | 3.2                     | 2.2            | 60.0        | -31.3        | 1.2          | -1.0          | 25.5            | -15.0        | -4.5           |                           |
| <b>Crude materials, inedible</b>           | <b>636.4</b>            | <b>682.1</b>   | <b>10.8</b> | <b>7.2</b>   | <b>61.8</b>  | <b>45.7</b>   | <b>5,512.5</b>  | <b>-5.0</b>  | <b>-288.3</b>  |                           |
| Metals in ores, concentrates and scrap     | 145.2                   | 125.7          | 22.0        | -13.4        | 26.2         | -19.5         | 912.3           | -7.5         | -74.4          |                           |
| Coal and other related products            | 96.1                    | 69.5           | 59.1        | -27.7        | 35.7         | -26.6         | 671.4           | -26.8        | -245.7         |                           |
| Crude petroleum                            | 248.2                   | 364.8          | -11.7       | 47.0         | -33.0        | 116.6         | 2,747.4         | 4.3          | 113.7          |                           |
| Crude animal products                      | 21.9                    | 19.3           | 37.7        | -11.9        | 6.0          | -2.6          | 181.1           | -4.4         | -8.3           |                           |
| Crude vegetable products                   | 49.2                    | 39.5           | 42.2        | -19.7        | 14.6         | -9.7          | 340.0           | -10.3        | -39.2          |                           |
| Crude wood products                        | 13.2                    | 13.1           | 7.3         | -0.8         | 0.9          | -0.1          | 133.2           | 8.7          | 10.7           |                           |
| Cotton                                     | 5.4                     | 6.1            | 0.0         | 13.0         | 0.0          | 0.7           | 59.4            | -37.1        | -35.1          |                           |
| Wool and man-made fibres                   | 14.2                    | 13.2           | 17.4        | -7.0         | 2.1          | -1.0          | 120.3           | -5.9         | -7.5           |                           |
| Crude non-metallic minerals                | 42.8                    | 30.9           | 27.0        | -27.8        | 9.1          | -11.9         | 347.0           | -0.8         | -2.9           |                           |
| <b>Fabricated materials, inedible</b>      | <b>1,620.3</b>          | <b>1,619.8</b> | <b>0.6</b>  | <b>0.0</b>   | <b>9.3</b>   | <b>-0.5</b>   | <b>14,191.9</b> | <b>14.0</b>  | <b>1,739.3</b> |                           |
| Wood fabricated materials                  | 59.5                    | 60.5           | 3.5         | 1.7          | 2.0          | 1.0           | 488.9           | -0.1         | -0.7           |                           |
| Textile fabricated materials               | 172.2                   | 160.9          | 1.5         | -6.6         | 2.6          | -11.3         | 1,370.8         | 5.3          | 69.6           |                           |
| Organic chemicals                          | 128.5                   | 117.2          | -5.4        | -8.8         | -7.4         | -11.3         | 1,139.3         | 4.3          | 46.5           |                           |
| Plastic materials                          | 127.2                   | 135.4          | -3.8        | 6.4          | -5.0         | 8.2           | 1,144.0         | 7.8          | 83.2           |                           |
| Other chemicals and related prod.          | 200.4                   | 196.4          | -4.6        | -2.0         | -9.7         | -4.0          | 1,777.1         | 5.0          | 84.6           |                           |
| Petroleum and coal products                | 150.6                   | 90.4           | 54.3        | -40.0        | 53.0         | -60.2         | 1,365.1         | 25.5         | 277.4          |                           |
| Steel bars, rods, plates, sheets           | 90.3                    | 107.9          | -17.9       | 19.5         | -19.7        | 17.6          | 865.2           | 26.6         | 181.7          |                           |
| Other iron and steel products              | 77.9                    | 76.6           | 16.4        | -1.7         | 11.0         | -1.3          | 623.2           | 13.1         | 72.2           |                           |
| Precious metals including alloys           | 134.9                   | 179.1          | -22.0       | 32.8         | -38.0        | 44.2          | 1,288.2         | 105.8        | 662.3          |                           |
| Other non-ferrous metals and alloys        | 91.9                    | 102.5          | -4.1        | 11.5         | -3.9         | 10.6          | 842.9           | -2.8         | -24.7          |                           |
| Metal fabricated basic products            | 144.8                   | 143.8          | 15.2        | -0.7         | 19.1         | -1.0          | 1,170.3         | 9.8          | 104.6          |                           |
| Rubber fabricated materials                | 19.1                    | 18.3           | -7.3        | -4.2         | -1.5         | -0.8          | 176.2           | 5.0          | 8.4            |                           |
| Oils, fats, animal and vegetable           | 21.2                    | 22.1           | 28.5        | 4.2          | 4.7          | 0.9           | 177.9           | -1.6         | -2.9           |                           |
| Non-metallic minerals                      | 85.7                    | 90.6           | -0.7        | 5.7          | -0.6         | 4.9           | 753.9           | 17.2         | 110.6          |                           |
| Other fabricated materials                 | 116.0                   | 118.0          | 2.5         | 1.7          | 2.8          | 2.0           | 1,008.3         | 7.0          | 65.9           |                           |
| <b>End products, inedible</b>              | <b>6,202.1</b>          | <b>6,063.5</b> | <b>3.3</b>  | <b>-2.2</b>  | <b>198.9</b> | <b>-138.6</b> | <b>51,968.6</b> | <b>12.1</b>  | <b>5,602.8</b> |                           |
| Engines, turbines and elec. motors         | 55.7                    | 50.9           | 3.0         | -8.6         | 1.6          | -4.8          | 606.4           | 15.6         | 81.7           |                           |
| Drilling mining machinery                  | 69.7                    | 63.8           | -7.7        | -8.5         | -5.8         | -5.9          | 590.5           | 34.4         | 151.2          |                           |
| Excavating machinery                       | 90.4                    | 82.8           | 16.6        | -8.4         | 12.9         | -7.6          | 627.7           | 32.7         | 154.8          |                           |
| Metal working machinery                    | 77.8                    | 88.3           | -18.9       | 13.5         | -18.1        | 10.5          | 743.9           | 21.9         | 133.8          |                           |
| Other industrial machinery                 | 380.6                   | 387.7          | 6.0         | 1.9          | 21.7         | 7.1           | 3,229.6         | 15.1         | 424.5          |                           |
| Agricultural machinery incl. tractors      | 154.7                   | 154.9          | 4.1         | 0.1          | 6.1          | 0.2           | 1,282.2         | -4.8         | -64.9          |                           |
| Passenger autos and chassis                | 1,011.6                 | 992.2          | 4.7         | -1.9         | 45.0         | -19.4         | 8,350.0         | 44.2         | 2,559.2        |                           |
| Trucks and other motor vehicles            | 243.4                   | 336.1          | -6.6        | 38.1         | -17.2        | 92.7          | 2,279.2         | 17.9         | 345.6          |                           |
| Motor vehicle pts., incl. eng. & eng. pts. | 1,678.0                 | 1,378.5        | 14.6        | -17.8        | 214.4        | -299.5        | 12,620.1        | 10.7         | 1,224.5        |                           |
| Television, radios, phonographs            | 66.4                    | 63.3           | -2.1        | -4.7         | -1.4         | -3.1          | 595.1           | -5.1         | -31.9          |                           |
| Other commun. and related equipment        | 311.1                   | 311.4          | -3.1        | 0.1          | -10.1        | 0.3           | 2,825.7         | -1.0         | -29.7          |                           |
| Office machines and equipment              | 347.6                   | 337.0          | -0.1        | -3.0         | -0.2         | -10.6         | 3,161.2         | -3.1         | -100.8         |                           |
| Other equipment and tools                  | 595.7                   | 577.5          | 5.8         | -3.1         | 32.5         | -18.2         | 4,941.8         | 8.9          | 403.7          |                           |
| Aircraft, engines, parts                   | 183.4                   | 318.8          | -27.9       | 73.8         | -70.8        | 135.4         | 2,041.5         | 17.6         | 305.2          |                           |
| Other transportation equipment & parts     | 107.1                   | 78.3           | -3.5        | -26.9        | -3.9         | -28.8         | 961.2           | -8.7         | -91.4          |                           |
| Apparel and apparel accessories            | 154.1                   | 144.5          | -9.2        | -6.2         | -15.7        | -9.6          | 1,316.5         | 2.5          | 32.4           |                           |
| Footwear                                   | 43.5                    | 44.2           | -7.6        | 1.6          | -3.6         | 0.7           | 372.3           | 1.9          | 6.8            |                           |
| Printed matter                             | 120.6                   | 123.9          | 9.5         | 2.7          | 10.5         | 3.3           | 1,025.9         | 0.9          | 9.4            |                           |
| Watches, sporting goods and toys           | 71.7                    | 82.5           | -21.6       | 15.1         | -19.7        | 10.8          | 725.7           | 8.1          | 54.6           |                           |
| House furnishings                          | 99.7                    | 104.6          | 4.1         | 4.9          | 3.9          | 4.9           | 833.2           | 2.4          | 19.9           |                           |
| Photographic goods                         | 86.4                    | 93.3           | 4.9         | 8.0          | 4.0          | 6.9           | 751.9           | -10.7        | -90.1          |                           |
| Miscellaneous end products                 | 253.0                   | 249.0          | 5.3         | -1.6         | 12.8         | -4.0          | 2,086.9         | 5.3          | 105.0          |                           |
| <b>Special transactions trade</b>          | <b>142.2</b>            | <b>147.8</b>   | <b>6.4</b>  | <b>3.9</b>   | <b>8.5</b>   | <b>5.6</b>    | <b>1,239.5</b>  | <b>7.5</b>   | <b>86.7</b>    |                           |
| <b>Unallocated BOP adjustments</b>         | <b>-180.6</b>           | <b>-171.2</b>  | <b>13.4</b> | <b>-5.2</b>  | <b>-21.3</b> | <b>9.4</b>    | <b>-1,475.3</b> | <b>-23.5</b> | <b>454.2</b>   |                           |
| <b>Total imports</b>                       | <b>8,914.6</b>          | <b>8,853.2</b> | <b>3.1</b>  | <b>-0.7</b>  | <b>269.6</b> | <b>-61.4</b>  | <b>75,939.4</b> | <b>11.3</b>  | <b>7,729.9</b> |                           |

