

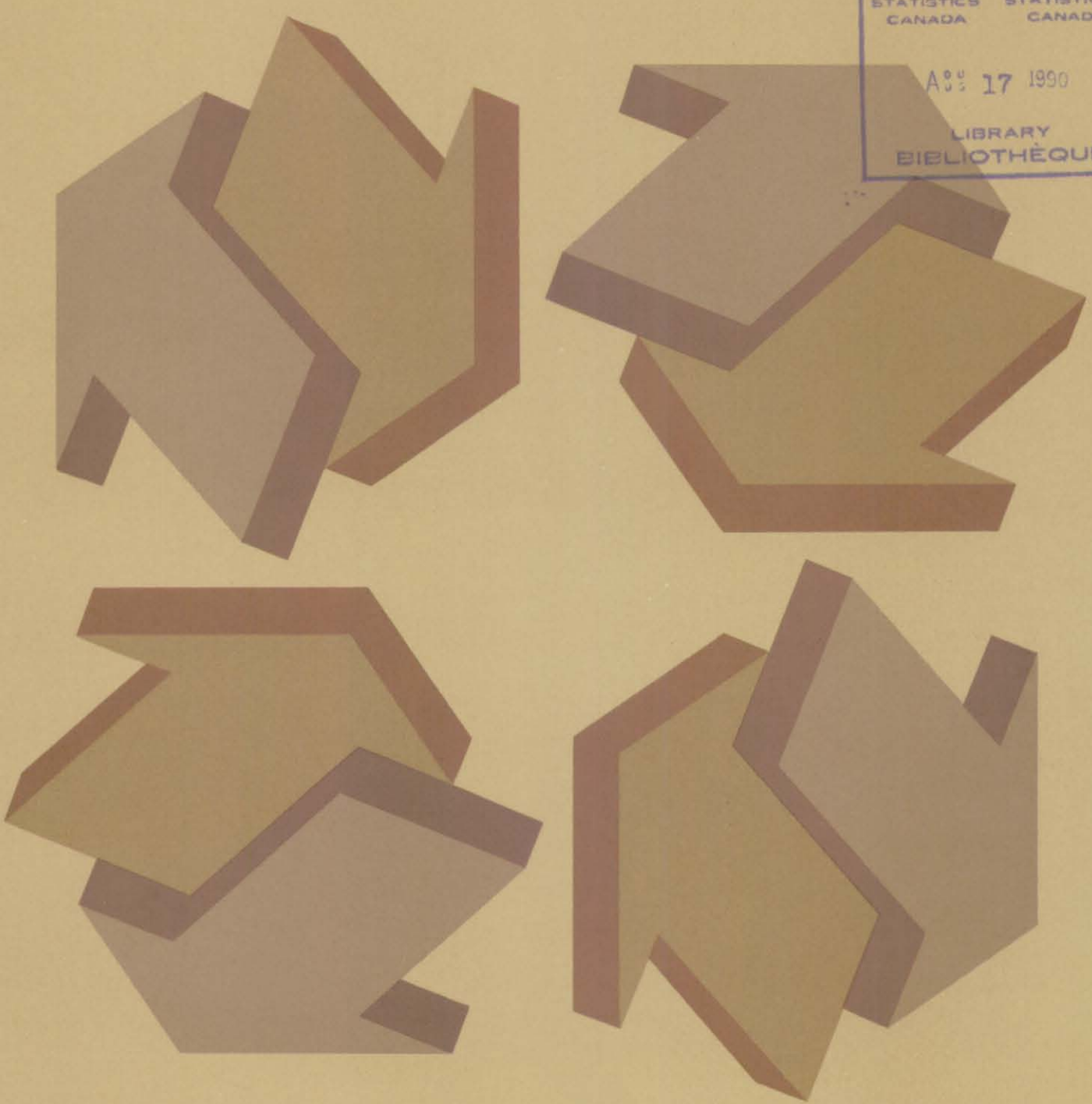


Preliminary Statement of Canadian International Trade

June 1990

Not for release before 8:30 a.m. E.S.T.
Friday, August 17, 1990

STATISTICS CANADA / STATISTIQUE CANADA
AUG 17 1990
LIBRARY / BIBLIOTHÈQUE



Data in Many Forms . . .

Statistics Canada disseminates data in a variety of forms. In addition to publications, both standard and special tabulations are offered on computer print-outs, microfiche and microfilm, and magnetic tapes. Maps and other geographic reference materials are available for some types of data. Direct access to aggregated information is possible through CANSIM, Statistics Canada's machine-readable data base and retrieval system.

How to Obtain More Information

Inquiries about this publication and related statistics or services should be directed to:

Trade Information Unit,
International Trade Division,

Statistics Canada, Ottawa, K1A 0T6 (Telephone: 951-9647) or to the Statistics Canada reference centre in:

St. John's	(772-4073)	Winnipeg	(983-4020)
Halifax	(426-5331)	Regina	(780-5405)
Montreal	(283-5725)	Edmonton	(495-3027)
Ottawa	(951-8116)	Calgary	(292-6717)
Toronto	(973-6586)	Vancouver	(666-3691)

Toll-free access is provided in all provinces and territories, for users who reside outside the local dialing area of any of the regional reference centres.

Newfoundland and Labrador	1-800-563-4255
Nova Scotia, New Brunswick and Prince Edward Island	1-800-565-7192
Quebec	1-800-361-2831
Ontario	1-800-263-1136
Manitoba	1-800-542-3404
Saskatchewan	1-800-667-7164
Alberta	1-800-282-3907
Southern Alberta	1-800-472-9708
British Columbia (South and Central)	1-800-663-1551
Yukon and Northern B.C. (area served by NorthwTel Inc.)	Zenith 0-8913
Northwest Territories (area served by NorthwTel Inc.)	Call collect 403-495-2011

How to Order Publications

This and other Statistics Canada publications may be purchased from local authorized agents and other community bookstores, through the local Statistics Canada offices, or by mail order to Publication Sales, Statistics Canada, Ottawa, K1A 0T6.

1(613)951-7277

Facsimile Number 1(613)951-1584

National toll free order line 1-800-267-6677

Toronto

Credit card only (973-8018)

Statistics Canada
International Trade Division

Preliminary Statement of Canadian International Trade

June 1990

Published under the authority of the Minister
of Industry, Science and Technology

© Minister of Supply
and Services Canada 1990

All rights reserved. No part of this publication may be reproduced, stored in a retrieval system or transmitted in any form or by any means, electronic, mechanical, photocopying, recording or otherwise without prior written permission of the Minister of Supply and Services Canada.

August 1990

Price: Canada: \$10.00 per issue, \$100.00 annually
United States: US\$12.00 per issue, US\$120.00 annually
Other Countries: US\$14.00 per issue, US\$140.00 annually

Catalogue 65-001P, Vol. 6, No. 6

ISSN 0828-1998

Ottawa

This publication was prepared under the direction of:

Ellis Drover, Director, International Trade Division (613) 951-9733

François Bordé, Chief, Trade Measures and Analysis Section (613) 951-4809

Jean-Pierre Simard, Head, Reconciliation and Analysis Unit (613) 951-1711

Denis Pilon, Head, Price and Volume Indexes Unit (613) 951-4808

Also contributing to this issue:

for manuscript design:

Heather Young (613) 951-9784

TABLE OF CONTENTS

	Page
Highlights	4
Monthly Summary	5
Quarterly Summary	9
Tables	
1. Merchandise Trade of Canada	10
2. Merchandise Trade by Principal Trading Areas	11
2A. Statistical Alignment of Canadian Exports to the United States with United States Imports from Canada	11
3. Exports by Commodity Groupings	12
4. Imports by Commodity Groupings	13
5. Constant Dollars, Laspeyres Price Indexes and Terms of Trade	14
6. Exports by Commodity Groupings in 1986 Dollars	15
7. Imports by Commodity Groupings in 1986 Dollars	16

For more detailed information on statistics, concepts and definitions, order the June 1990 issue of *Summary of Canadian International Trade* (cat. no. 65-001, \$18.20/\$182), available the first week of September 1990, or contact Gordon Blaney (613-951-9647), Trade Information Unit, or Jean-Pierre Simard (613-951-1711) (for analysis information), or Denis Pilon (613-951-4808) (for price index information), Trade Measures and Analysis Section, International Trade Division.

Current Account data which incorporate merchandise trade statistics, as well as data concerning trade in services and capital account movements, are available on a quarterly basis in *Canada's balance of international payments* (cat. no. 67-001).

Available on CANSIM: matrices 3620 to 3629, 3633 to 3644, 3649 to 3651,
3680 to 3713, 3715 to 3719, 3887 to 3913.

Note to Users

Revisions to U.S. imports from Canada data, published in July of this year, have necessitated a revision to exports data for 1989.

These revisions impact on the commodity distribution and on the export totals (-\$623 million or 0.4% of total exports for 1989).

HIGHLIGHTS

- **Exports rose sharply in June to total \$12.8 billion.**
- **Imports totalled \$11.0 billion, down from May levels.**
- **The merchandise trade surplus was posted at \$1.7 billion.**
- **While the short-term trend for exports continued to grow for the seventh consecutive month, the trend for imports faltered.**
- **The increase in exports is largely attributable to the sharp rise in exports of automotive products.**
- **Imports of machines and equipment posted their greatest decline in twelve months.**

Monthly Summary

Preliminary figures on Canadian merchandise exports reached a new high in June, a total of \$12.8 billion. This is an increase of 5.3% or \$639 million over the revised export figures for May, which were down \$181 million from April. Whereas the data for May were revised downward (\$300 million), the data for April were revised upward (\$456 million) as the result of sizeable corrections attributable to American imports from Canada.

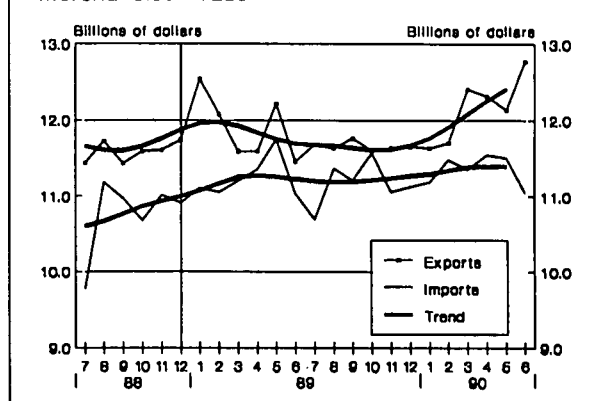
In June, exports were more than \$1 billion higher than January and remained significantly above the observed 1989 average. Overall, exports for the first half of 1990 show an increase of 2.1% over the first half of 1989 and 4.3% over the second half of 1989.

The strength in exports at this time appears to be contradictory with the growth in the American economy in the first half of 1990. In spite of the slowdown in the American GNP in the second quarter of 1990, growth continues in those industries which impact on Canadian exports, notably automotive production.

Imports for their part dropped sharply in June, plunging \$456 million or 4.0% to total \$11.0 billion, the lowest level since July of last year. Imports in May were sluggish (-\$50 million), a reversal from the close to \$200 million gain in April.

For the first half of 1990, imports totalled \$68.1 billion, an increase of \$1.1 billion or 1.6% from the second half of 1989. Imports seem to have levelled off at a time when some sectors of the Canadian economy are showing more and more signs of slowing down. The forecasted rate of growth in capital investment expenditure for machinery and equipment for 1990 was revised slightly downward in July. This seems to concur with the weakening in the trend for imports of machinery and equipment. The marked softening of crude petroleum prices from February to June has also impacted on the growth of total imports.

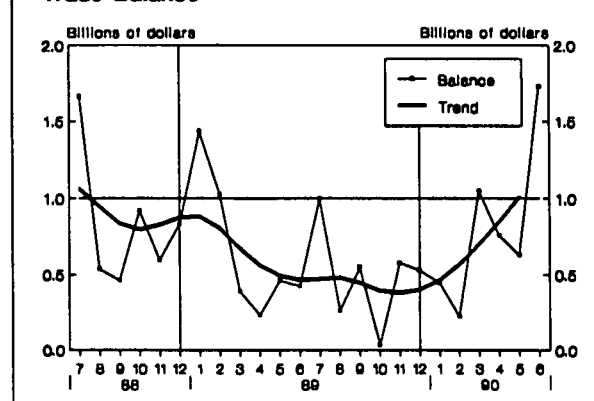
Merchandise Trade



The contrary movements of merchandise imports and exports in June pushed Canada's trade balance to \$1.7 billion, \$1.1 billion higher than in May. The May trade balance was revised downward to a total of \$630 million, whereas the April figure was revised upward to a total of \$760 million. The trade balance for June reached the highest level observed over the past five years.

The trade balance with the United States for June was nearly three times higher than the figure posted for May, climbing from \$833 million to \$2.2 billion. Conversely, deficits were posted with Canada's other principal trading areas, notably a \$130 million deficit with the E.E.C.

Trade Balance



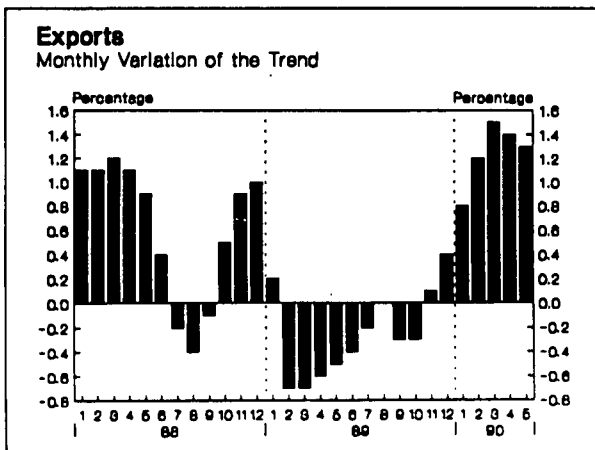
Short-Term Trend

The short-term trend is a weighted moving average of thirteen terms, and it is therefore possible that the seasonally-adjusted series may not point in the same direction as the short-term trend. In addition, the trend for the last month is not presented and does not form part of the analysis since it frequently undergoes extensive change with the inclusion of data for the following month. (For further details on the methodology used to calculate the short-term trend, please refer to the January 1989 issue of this bulletin.)

Exports

The short-term trend for exports continued to move upward in May for the seventh consecutive month. However, the growth rate softened slightly, edging down from 1.4% in April to 1.3% in March.

- According to the data for May, the upward movement of the trends continued for exports to the United States and "Other E.E.C. countries". Conversely, a downward movement in the trends was observed for exports to the United Kingdom, Japan, "Other O.E.C.D. countries" and "Other countries".
- The trend for exports of automotive products was the most important factor in the overall growth for May. The growth rate of 2.5% marked the fifth consecutive increase. The trends for exports of passenger vehicles and automotive parts increased.

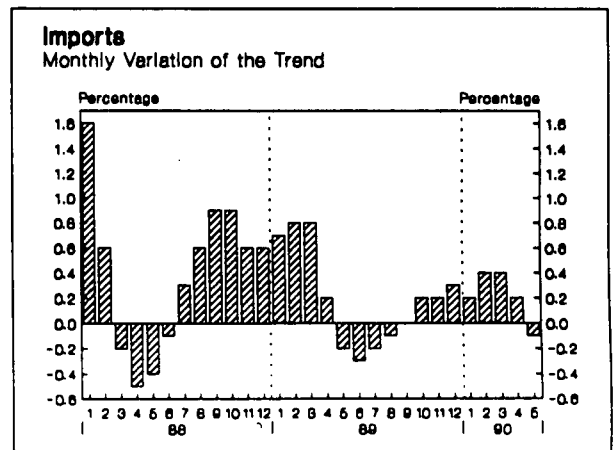


- The trend for exports of aircraft and other transportation equipment has been climbing steadily since September of 1989. The May growth rate jumped to 3.2%, following increases of 2.8% and 2.5% for April and March.
- Commodities recording downward trends in May included exports of forestry products which edged down for the sixth consecutive month (-1.1%). The trends for exports of woodpulp and lumber products slid 2.3% and 1.3% respectively.

Imports

The import trend weakened in May, edging down 0.1%. This was in sharp contrast to the 0.2% rise in April and the 0.4% rise in March.

- A downward movement was observed in the trends for imports from the E.E.C., Japan, and "Other countries". Conversely, the trends for imports from the United States and "Other O.E.C.D. countries" moved upward.
- The trend for imports of industrial goods and materials, notably metals and metal ores, showed the greatest decline in May. The trend for imports of precious metals alone dropped 17%, following a 16% slide in April.
- In May, the trend for imports of office machines fell by 2.7%, following drops of 0.3% in February, 1.5% in March and 2.4% in April.
- However, a relatively large increase (1.3%) was observed in the trend for imports of automotive products in May, compared to 1.6% in April. The rise in the overall trend for automotive products is largely attributable to the strength in truck imports.



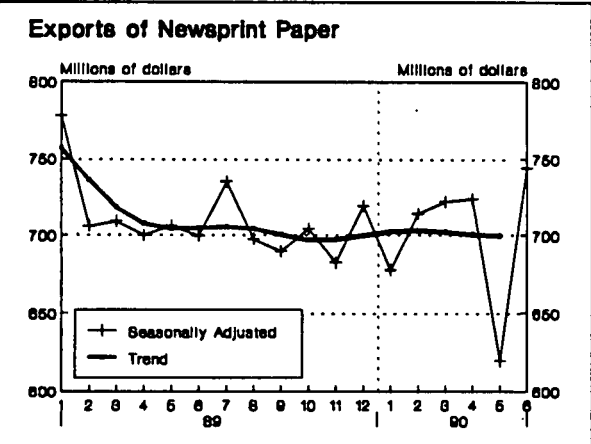
Detailed Analysis by Commodities and Trading Partners

Commodities

Exports climbed \$639 million in June to a total of \$12.8 billion. This followed declines of \$181 million in May and \$96 million in April, according to the most recent revisions. The movement observed in the June data is largely attributable to the following factors:

The increase in exports of automotive products accounts for a large part of the total growth observed in June. Exports of passenger vehicles, trucks and automotive parts climbed by \$246 million, \$292 million and \$173 million respectively. The sector posted an overall growth of \$711 million, following a slump of \$538 million in May. Exports of automotive products reached a new high of \$3.3 billion. The June increase coincides with the announcement in the United States of an increase in the production and sales of motor vehicles.

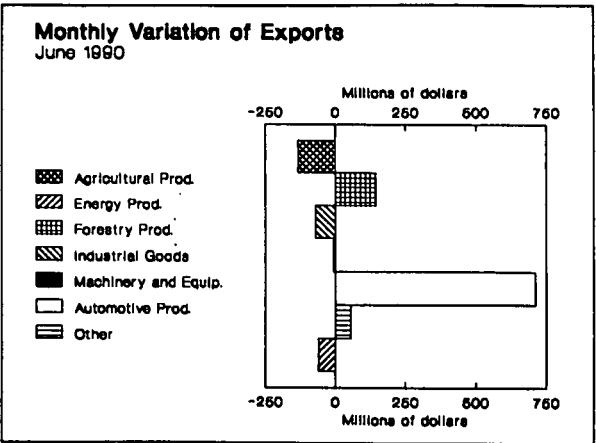
Exports of newsprint and other paper recovered in June after dropping \$104 million in May, climbing \$125 million to a total of \$744 million, their highest level posted since January of 1989.



Other commodity groupings which posted significant increases in June were exports of industrial and agricultural machinery (\$61 million) and natural gas (\$43 million).

Exports of wheat posted the largest decrease in June, plummeting \$134 million and bringing total wheat exports to \$259 million, their lowest level this year.

Imports dropped in June for the second consecutive month by \$456 million to total \$11.0 billion. This decline is significantly greater than in May, when imports had

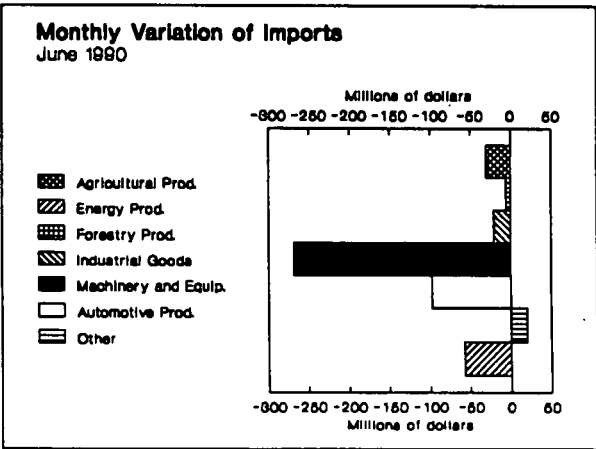


fallen by \$50 million. The downward movement in June is largely due to the following factors:

Imports of machinery and equipment totalled \$3.5 billion, posting the greatest drop in twelve months (\$268 million). Imports of industrial and agricultural machinery plunged \$73 million, and imports of aircraft and other transportation equipment fell \$61 million. These decreases coincide with the downward revision of the forecast for investment in machinery and equipment for 1990.

Imports of automotive parts slid \$57 million to total \$1.4 billion. This decline follows an increase of more than \$100 million in May. Imports of passenger vehicles and trucks also fell but by lesser amounts.

Imports of energy products dropped sharply in June by \$57 million, following a drop of \$53 million in May. Imports of crude petroleum alone fell \$27 million, the fourth consecutive drop. The significant softening of crude petroleum prices from February to June (-22%) has contributed to the nominal decline in imports.



Trading Partners

Exports to the United States climbed \$1.1 billion, to total \$10.0 billion. This is in sharp contrast to the \$421 decline posted in May.

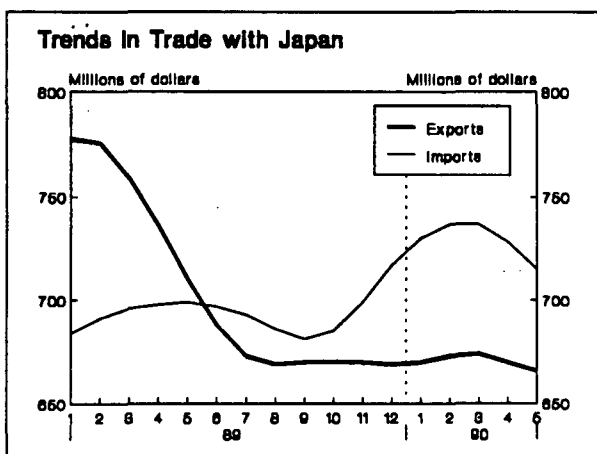
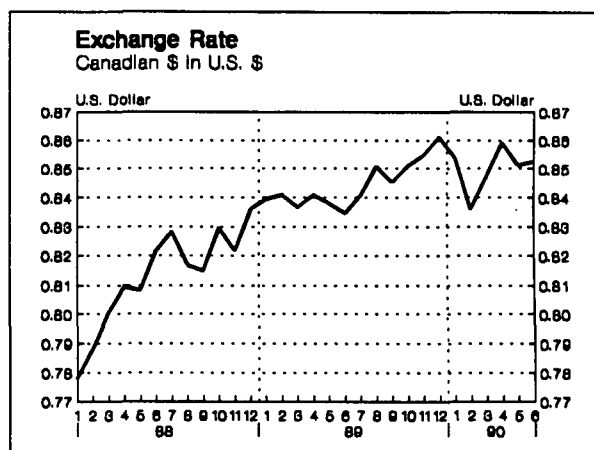
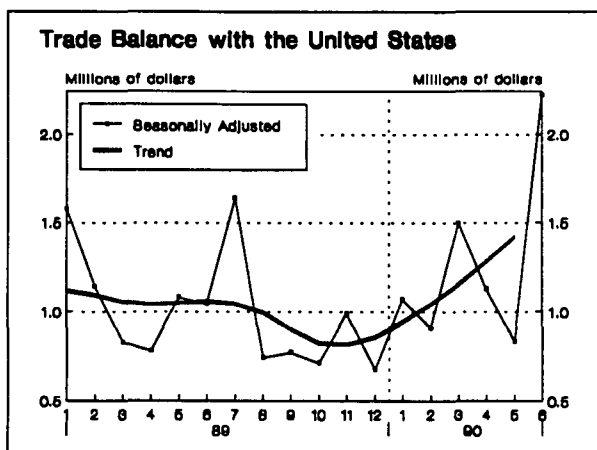
Exports to the E.E.C. remain virtually unchanged, whereas exports to Japan, "Other O.E.C.D. countries", and "Other countries" fell \$35 million, \$83 million and \$352 million respectively.

Imports from the United States declined \$290 million, for a total of \$7.7 billion. This followed a drop of \$124 million in May.

Imports from the United Kingdom, Japan and "Other countries" fell by \$99 million, \$41 million and \$125 million respectively.

Conversely, imports from "Other E.E.C. countries" and "Other O.E.C.D. countries" climbed by \$44 million and \$54 million respectively.

With the exception of the significant merchandise trade surplus posted with the United States of \$2.2 billion in June, Canada posted deficits with its other principal trading areas.



Quarterly Summary

In the second quarter of 1990, exports totalled \$37.2 billion. This is a significant increase from the first quarter of 1990 (\$35.7 billion) and the fourth quarter of 1989 (\$34.9 billion). The increase brings the quarterly growth rate of merchandise exports to 4.1%.

Continued economic growth in the United States in 1990, although not as strong as before, still appears to support Canadian exports. Incidentally, exports of automotive products, mainly to the United States, rose nearly \$900 million and constituted the greatest single factor in the rise in exports in the second quarter. Exports of passenger vehicles, trucks and automotive parts climbed by \$489 million, \$100 million and \$306 million respectively.

Exports of machinery and equipment climbed as well, increasing \$458 million from the previous quarter. They had risen \$684 million in the first quarter. Exports of aircraft grew for the third consecutive quarter while exports of agricultural and industrial machinery softened.

Exports of natural gas also rose significantly in the second quarter by \$117 million.

Imports rose slightly in the second quarter, totalling \$34.1 billion, compared to \$34.0 billion in the first quarter. The rate of growth for imports fell from 1.5% in the fourth quarter of 1989 to 0.8% in the first quarter of 1990, then down to 0.2% in the second quarter of 1990.

The softening of the growth rate for imports appears to coincide with the slowdown in Canadian final demand in 1990, especially for investment. Imports of industrial and agricultural machinery plunged \$136 million in the second quarter and imports of aircraft and other transportation equipment fell \$128 million. Imports of office machines and equipment, which had increased in the fourth quarter of 1989 (+2.9%) and the first quarter of 1990 (+5.2%), also fell back in the second quarter of 1990 (-9.0%).

Imports of metals and ores fell by \$329 million, with more than \$200 million of the drop attributable to a weakness in imports of precious metals.

Imports of energy products decreased \$191 million in the second quarter, in contrast to the strong increase (+\$346 million) posted in the first quarter, as the result of reduced stocks following the severe weather conditions in late 1989.

Table 1
Merchandise Trade of Canada
 June 1990
 Balance of Payments Basis

	Exports (1)	Imports (1)	Exports Raw	Imports Raw	Exports S.A.(3)	Imports S.A.(3)	Balance S.A.(3)	Period-to-period change(2)		
								Exports S.A.(3)	Imports S.A.(3)	Balance S.A.(3)
	\$ millions							%	%	\$ millions
1984	112,384	95,460	111,330	91,493	111,330	91,492	19,838	22.9	25.2	2,381
1985	119,474	104,355	119,061	102,669	119,061	102,669	16,392	6.9	12.2	-3,446
1986	120,670	112,511	120,318	110,374	120,317	110,374	9,943	1.1	7.5	-6,449
1987	125,087	116,239	126,226	115,119	126,225	115,119	11,106	4.9	4.3	1,163
1988	137,550	131,172	138,435	128,321	138,434	128,321	10,113	9.7	11.5	-993
1989	138,340	135,033	141,462	134,528	141,461	134,528	6,934	2.2	4.8	-3,180
1988										
First quarter	33,966	35,191	33,731	32,903	33,647	32,001	1,646	2.1	2.7	-172
Second quarter	36,217	33,574	36,444	33,165	35,250	31,799	3,452	4.8	-0.6	1,806
Third quarter	32,137	30,432	32,679	30,215	34,593	31,932	2,661	-1.9	0.4	-791
Fourth quarter	35,231	31,975	35,580	32,037	34,944	32,589	2,355	1.0	2.1	-305
1989										
First quarter	34,656	33,747	35,798	33,540	36,214	33,357	2,857	3.6	2.4	502
Second quarter	36,281	36,426	36,978	36,079	35,262	34,138	1,124	-2.6	2.3	-1,733
Third quarter	32,228	31,425	32,791	31,605	35,080	33,268	1,813	-0.5	-2.5	688
Fourth quarter	35,174	33,435	35,895	33,304	34,905	33,765	1,139	-0.5	1.5	-673
1990										
First quarter	36,077	35,096	35,501	34,860	35,745	34,024	1,721	2.4	0.8	581
Second quarter	38,922	35,696	38,591	35,438	37,219	34,104	3,115	4.1	0.2	1,394
1989										
January	11,362	10,584	11,873	10,578	12,543	11,107	1,436	6.8	1.8	600
February	11,248	11,009	11,655	10,904	12,077	11,049	1,028	-3.7	-0.5	-408
March	12,045	12,153	12,270	12,058	11,594	11,201	393	-4.0	1.4	-635
April	11,700	11,900	11,774	11,804	11,590	11,357	233	0.0	1.4	-160
May	12,539	12,618	13,142	12,476	12,213	11,749	464	5.4	3.4	231
June	12,042	11,909	12,061	11,800	11,459	11,032	427	-6.2	-6.1	-37
July	9,850	9,503	10,014	9,640	11,685	10,685	1,000	2.0	-3.1	573
August	10,811	11,071	11,146	11,033	11,630	11,368	263	-0.5	6.4	-738
September	11,568	10,851	11,630	10,931	11,765	11,215	550	1.2	-1.3	287
October	11,919	12,215	12,223	11,970	11,611	11,578	33	-1.3	3.2	-516
November	12,345	11,414	12,501	11,393	11,638	11,061	577	0.2	-4.5	543
December	10,910	9,805	11,171	9,941	11,656	11,126	529	0.2	0.6	-48
1990										
January	11,420	10,804	11,189	10,659	11,632	11,185	448	-0.2	0.5	-82
February	11,474	11,342	11,315	11,382	11,703	11,481	223	0.6	2.6	-225
March	13,183	12,950	12,997	12,819	12,409	11,359	1,051	6.0	-1.1	828
April	12,578	11,592	12,395	11,515	12,314	11,554	760	-0.8	1.7	-291
May	13,353	12,297	13,238	12,314	12,133	11,504	630	-1.5	-0.4	-131
June	12,991	11,806	12,958	11,608	12,772	11,047	1,725	5.3	-4.0	1,096
Year-to-date										
1989	70,937	70,173	72,776	69,619	71,476	67,495	3,981	3.7	5.8	-1,116
1990	74,999	70,792	74,092	70,298	72,964	68,128	4,835	2.1	0.9	854

(1) Customs Basis

(2) Change over previous period

(3) Seasonally Adjusted.

Note: Due to rounding, monthly data may not add up to quarterly data and quarterly data may not add up to annual data.

Table 2
Merchandise Trade by Principal Trading Areas
 June 1990
 Seasonally Adjusted, Balance of Payments Basis

	May	June	Period-to-period change				Year-to-date Total	Change over previous year	
			May	June	May	June		%	\$ millions
	\$ millions		%	%	\$ millions		\$ millions	%	\$ millions
Exports to:									
United States	8,844.7	9,951.3	-4.5	12.5	-421.1	1,106.6	54,713.7	2.3	1,203.8
United Kingdom	255.0	275.2	-11.6	7.9	-33.6	20.1	1,652.6	-7.5	-133.4
E.E.C. 86 excl. U.K.	733.8	715.0	7.2	-2.6	49.3	-18.9	4,018.2	-1.9	-79.6
Japan	691.4	656.9	11.3	-5.0	70.4	-34.5	4,013.5	-9.4	-418.1
Other O.E.C.D. 86 *	300.9	218.3	18.1	-27.5	46.1	-82.6	1,721.8	13.3	201.6
Other countries	1,307.2	955.7	9.0	-26.9	108.4	-351.6	6,844.3	11.6	713.4
Total	12,133.1	12,772.3	-1.5	5.3	-180.5	639.2	72,964.0	2.1	1,487.7
Imports from:									
United States	8,012.0	7,722.1	-1.5	-3.6	-124.2	-289.9	47,044.8	-0.0	-6.8
United Kingdom	392.2	293.3	10.9	-25.2	38.6	-98.8	2,270.6	-6.3	-152.8
E.E.C. 86 excl. U.K.	782.3	826.4	-10.2	5.6	-88.7	44.1	5,044.8	2.3	114.2
Japan	712.4	671.1	2.9	-5.8	19.9	-41.3	4,349.8	3.9	164.2
Other O.E.C.D. 86 *	372.1	426.2	-14.6	14.6	33.4	54.2	2,347.7	19.9	390.0
Other countries	1,232.7	1,108.1	15.8	-10.1	167.8	-124.7	7,070.8	1.8	125.1
Total	11,503.6	11,047.2	-0.4	-4.0	-49.9	-456.4	68,128.5	0.9	634.0
Balance with:									
United States	832.7	2,229.3			-296.9	1,396.5	7,668.9		1,210.5
United Kingdom	-137.2	-18.2			-72.2	119.0	-618.0		19.3
E.E.C. 86 excl. U.K.	-48.5	-111.5			138.0	-63.0	-1,026.6		-193.7
Japan	-20.9	-14.2			50.5	6.8	-336.3		-582.3
Other O.E.C.D. 86 *	-71.2	-207.9			109.5	-136.8	-625.9		-188.4
Other countries	74.5	-152.4			-59.4	-226.9	-226.6		588.3
Total	629.5	1,725.1			-130.6	1,095.6	4,835.5		853.7

* Series has no seasonality.

Table 2A
Statistical Alignment of Canadian Exports to the United States with United States Imports from Canada
Customs Basis
 June 1990

	\$ millions
Total Canadian exports to United States	10,044.4
Freight and other related charges incurred in bringing the merchandise to the Canadian border	-232.2
Canadian re-exports of goods of foreign origin to United States	-563.8
United States imports of goods of Canadian origin from other countries	10.6
Re-exports of U.S. goods returned through Canada and designated as Canadian origin by the U.S.	389.9
Monthly average exchange rate (\$US/\$Cdn)	1.1728
Total United States imports from Canada (Country of Origin and F.O.B. place of lading Basis)	US \$8,227.1

Notes:

1. United States trade data includes Puerto Rico and Virgin Islands.
2. Totals may not add due to rounding.
3. Readers interested in aligning Canadian imports from United States to United States exports to Canada should refer to the *United States Department of Commerce News Release (FT900)* or contact International Trade Division Data Dissemination Section at 613-951-9647.

Table 3
Exports by Commodity Groupings
 June 1990
 Balance of Payments Basis

	Seasonally adjusted					Raw values			
	Apr.	May	June	Year-to-date		Percentage change			
				Value	% change	June'90/ June'89	June'89/ June'88	June'88/ June'87	
	\$ millions								
AGRICULTURAL AND FISHING PRODUCTS	1,207.9	1,177.6	1,045.6	6,919.9	18.6	14.9	-34.4	26.5	
Wheat	375.0	392.5	258.9	2,122.9	75.0	119.7	-78.5	117.4	
Other agricultural and fishing products	832.8	785.1	786.7	4,797.0	3.8	-1.9	-2.2	-3.1	
ENERGY PRODUCTS	1,066.1	1,121.8	1,061.6	6,341.6	3.1	-1.4	-0.6	-4.3	
Crude petroleum *	383.6	410.9	337.9	2,279.6	2.7	-17.7	5.9	-16.1	
Natural gas	270.0	272.8	315.2	1,599.2	9.5	9.6	9.0	21.7	
Other energy products	412.4	438.2	408.4	2,462.8	-0.3	10.7	-12.0	-1.7	
FORESTRY PRODUCTS	1,809.4	1,656.0	1,799.1	10,743.8	-4.2	-3.7	-11.2	18.9	
Lumber and sawmill products	549.5	553.5	562.6	3,411.8	-0.8	0.5	-19.7	11.3	
Woodpulp and other wood products	536.2	483.2	492.3	3,131.1	-10.0	-14.8	3.7	20.6	
Newsprint and other paper and paperboard	723.7	619.2	744.1	4,200.9	-2.3	2.3	-14.2	25.0	
INDUSTRIAL GOODS AND MATERIALS	2,386.1	2,589.1	2,518.0	14,753.7	-10.0	-2.1	-4.9	31.5	
Metal ores	463.2	478.6	440.7	2,616.4	-12.2	-14.1	20.4	42.8	
Chemicals, plastics and fertilizers	595.7	612.8	576.9	3,532.2	-4.0	4.3	-24.4	43.3	
Metals and alloys	877.8	993.2	1,009.1	5,816.2	-17.3	-0.7	-3.7	28.0	
Other industrial goods and materials	449.4	504.5	491.2	2,789.0	3.1	1.2	-2.6	17.0	
MACHINERY AND EQUIPMENT	2,308.9	2,590.4	2,583.3	14,507.7	15.9	17.8	11.3	10.2	
Industrial and agricultural machinery	487.0	475.6	536.8	3,057.3	13.0	11.2	7.2	4.6	
Aircraft and other transportation equipment	421.0	678.4	569.3	3,234.6	17.3	15.7	31.8	1.2	
Other machinery and equipment	1,400.9	1,436.5	1,477.2	8,215.8	16.5	21.4	5.6	16.3	
AUTOMOTIVE PRODUCTS	3,110.0	2,572.2	3,283.0	17,035.9	-3.2	10.8	-2.6	21.7	
Passenger autos and chassis	1,435.8	1,284.7	1,530.6	8,013.4	2.4	19.9	-10.9	29.3	
Trucks and other motor vehicles	841.0	479.4	771.5	4,083.7	0.7	5.7	1.7	29.6	
Motor vehicle parts	833.2	808.0	981.0	4,938.8	-13.7	1.5	8.7	4.6	
OTHER CONSUMER GOODS	214.9	216.0	243.9	1,388.5	3.0	5.0	-9.8	7.3	
SPECIAL TRANSACTIONS TRADE *	245.9	252.5	272.4	1,491.6	104.0	94.1	37.0	67.3	
UNALLOCATED ADJUSTMENTS *	-35.6	-42.5	-34.5	-219.0	-34.7	-33.3	-187.2	-50.3	
TOTAL	12,313.6	12,133.1	12,772.3	72,964.0	2.1	7.4	-6.3	18.3	

* Series has no seasonality.

Table 4
Imports by Commodity Groupings
 June 1990
 Balance of Payments Basis

	Seasonally adjusted					Raw values		
	Apr.	May	June	Year-to-date		Percentage change		
				Value	% change	June'90/ June'89	June'89/ June'88	June'88/ June'87
	\$ millions							
AGRICULTURAL AND FISHING PRODUCTS	736.5	729.8	700.0	4,301.6	4.8	-1.6	11.6	-5.3
Fruits and vegetables	242.6	228.9	223.2	1,438.7	5.1	-2.4	15.0	-16.7
Other agricultural and fishing products	493.9	500.9	476.7	2,862.9	4.6	-1.1	9.6	2.9
ENERGY PRODUCTS	612.1	559.6	502.5	3,539.1	13.0	5.8	14.4	-16.3
Crude petroleum	383.3	346.4	319.4	2,202.2	18.9	14.3	16.7	-12.7
Other energy products	228.8	213.2	183.1	1,336.9	4.5	-5.1	11.6	-20.4
FORESTRY PRODUCTS	135.8	111.1	106.2	724.6	8.1	-10.5	3.6	18.2
INDUSTRIAL GOODS AND MATERIALS	2,233.3	2,102.8	2,082.7	13,094.0	-1.3	-6.9	7.9	20.8
Metals and metal ores	509.2	533.0	520.0	3,453.4	-11.2	-17.3	-0.5	38.4
Chemicals and plastics	776.6	655.6	681.4	4,136.5	2.1	-2.0	15.3	11.3
Other industrial goods and materials	947.4	914.2	881.4	5,504.1	3.3	-3.2	9.2	16.3
MACHINERY AND EQUIPMENT	3,733.5	3,772.2	3,503.9	21,987.8	1.5	-3.2	8.8	19.9
Industrial and agricultural machinery	1,102.3	1,092.4	1,019.2	6,563.5	-3.2	-9.6	6.1	7.8
Aircraft and other transportation equipment	442.7	422.7	361.6	2,581.5	-14.0	-19.6	13.2	19.2
Office machines and equipment	546.1	474.6	497.1	3,185.9	0.8	-6.6	2.2	13.3
Other machinery and equipment	1,642.4	1,782.5	1,626.1	9,656.9	10.9	7.7	12.3	35.8
AUTOMOTIVE PRODUCTS	2,614.5	2,751.7	2,654.7	15,639.6	-4.3	1.2	-1.7	-12.8
Passenger autos and chassis	892.0	964.5	948.3	5,690.4	-7.4	0.6	0.4	-26.4
Trucks and other motor vehicles	366.7	328.1	304.4	1,832.5	0.4	13.3	-7.9	-23.0
Motor vehicle parts	1,355.8	1,459.0	1,402.0	8,116.7	-3.1	-0.6	-1.7	1.7
OTHER CONSUMER GOODS	1,344.2	1,318.9	1,287.4	7,862.0	6.4	3.6	9.0	6.4
Apparel and footwear	315.6	321.9	327.7	1,912.3	14.0	15.3	5.3	3.4
Miscellaneous consumer goods	1,028.6	997.0	959.8	5,949.7	4.1	0.3	10.0	7.3
SPECIAL TRANSACTIONS TRADE *	220.7	239.5	287.4	1,451.9	2.9	3.3	4.3	46.5
UNALLOCATED ADJUSTMENTS *	-77.3	-82.0	-77.8	-472.3	-2.3	-5.2	2.5	11.4
TOTAL	11,553.5	11,503.6	11,047.2	68,128.5	0.9	-1.6	6.2	5.6

* Series has no seasonality.

Table 5
Merchandise Trade of Canada
 Constant Dollars, Laspeyres Price Indexes and Terms of Trade
 June 1990
 Seasonally Adjusted, Balance of Payments Basis

	Constant 1986 dollars (1)				Laspeyres price index (2)					
			Period-to-period change (4)		1986=100.0			Period-to-period change (4)		
	Exports	Imports	Exports	Imports	Exports	Imports	Terms of Trade(3)	Exports	Imports	Terms of Trade(3)
	\$ millions		%							
1986	120,317	110,374	100.0	100.0	100.0
1987	124,717	117,271	3.7	6.2	101.8	98.8	103.0	1.8	-1.2	3.0
1988	136,376	133,265	9.3	13.6	103.0	97.5	105.6	1.2	-1.4	2.5
1989	137,498	139,647	0.8	4.8	104.8	97.9	107.0	1.8	0.4	1.3
1988										
First quarter	33,201	32,762	3.3	3.4	102.0	97.8	104.3	-1.4	-1.8	1.9
Second quarter	34,955	33,047	5.3	0.9	101.9	96.9	105.2	-0.2	-0.9	0.8
Third quarter	34,003	33,280	-2.7	0.7	103.4	97.0	106.6	1.5	0.1	1.4
Fourth quarter	34,217	34,176	0.6	2.7	104.3	97.6	106.9	0.9	0.7	0.3
1989										
First quarter	34,920	34,522	2.1	1.0	105.7	97.3	108.6	1.3	-0.3	1.7
Second quarter	33,848	35,155	-3.1	1.8	106.2	98.2	108.1	0.5	0.9	-0.4
Third quarter	34,390	34,582	1.6	-1.6	104.2	97.8	106.5	-1.9	-0.5	-1.5
Fourth quarter	34,341	35,387	-0.1	2.3	103.8	97.6	106.4	-0.4	-0.2	-0.2
1990										
First quarter	35,015	34,894	2.0	-1.4	104.6	99.5	105.1	0.8	1.9	-1.2
Second quarter	36,926	35,656	5.5	2.2	103.6	98.5	105.2	-1.0	-1.0	0.0
1989										
January	12,107	11,526	3.1	0.4	105.5	97.3	108.4	1.0	-0.1	1.0
February	11,605	11,439	-4.2	-0.8	105.5	97.4	108.3	0.1	0.1	-0.1
March	11,208	11,557	-3.4	1.0	106.0	97.3	108.9	0.4	0.0	0.6
April	11,114	11,599	-0.8	0.4	106.3	98.2	108.2	0.3	0.9	-0.6
May	11,738	12,182	5.6	5.0	106.4	98.3	108.2	0.1	0.1	0.0
June	10,997	11,374	-6.3	-6.6	106.0	98.5	107.6	-0.4	0.3	-0.6
July	11,384	11,002	3.5	-3.3	105.0	98.1	107.0	-0.9	-0.4	-0.5
August	11,389	11,884	0.0	8.0	104.0	97.3	106.9	-0.9	-0.8	-0.1
September	11,616	11,696	2.0	-1.6	103.6	97.7	106.0	-0.4	0.4	-0.8
October	11,356	12,073	-2.2	3.2	104.4	97.9	106.6	0.7	0.2	0.6
November	11,468	11,623	1.0	-3.7	103.9	97.7	106.3	-0.5	-0.3	-0.3
December	11,517	11,691	0.4	0.6	103.6	97.2	106.6	-0.3	-0.4	0.2
1990										
January	11,380	11,564	-1.2	-1.1	103.9	98.6	105.4	0.3	1.4	-1.1
February	11,373	11,668	-0.1	0.9	105.8	100.4	105.4	1.8	1.8	0.0
March	12,262	11,662	7.8	-0.1	104.2	99.3	104.9	-1.5	-1.1	-0.4
April	12,245	12,081	-0.1	3.6	103.7	98.5	105.3	-0.5	-0.8	0.3
May	11,948	11,989	-2.4	-0.8	103.9	98.7	105.3	0.2	0.2	0.0
June	12,733	11,586	6.6	-3.4	103.2	98.4	104.9	-0.7	-0.3	-0.4
Year-to-date										
1989	68,768	69,677	0.7	5.9						
1990	71,941	70,549	4.6	1.9						

(1) The Paasche current-weighted price index used to calculate constant dollars can be derived by dividing current values by the constant dollars above.

(2) The Laspeyres price index uses fixed weights based on 1986 trade and therefore reflects changes in price only.

(3) The Terms of Trade are the ratios of export price indexes to import price indexes, multiplied by 100.

(4) Change over previous period.

Note: Due to rounding, monthly data may not add up to quarterly data and quarterly data may not add up to annual data.

... figures not appropriate

Table 6
Exports by Commodity Groupings in 1986 Dollars
 June 1990
 Balance of Payments Basis

	Seasonally adjusted					Raw values			
	Apr.	May	June	Year-to-date		Percentage change			
				Value	% change	June '90/June '89/June '88/June '87	June '89	June '88	June '87
	\$ millions								
AGRICULTURAL AND FISHING PRODUCTS	1,129.1	1,109.2	990.6	6,521.9	24.3	16.7	-32.0	11.2	
Wheat	332.8	358.1	241.0	1,887.4	110.0	169.6	-79.1	35.2	
Other agricultural and fishing products	796.3	751.1	749.6	4,634.6	6.6	-3.0	-4.1	0.7	
ENERGY PRODUCTS	1,191.6	1,281.0	1,308.5	7,042.7	-1.9	7.6	-8.6	20.6	
Crude petroleum *	329.3	372.2	361.8	2,032.3	-5.0	1.7	-14.0	12.5	
Natural gas	414.2	425.5	494.8	2,371.6	8.8	13.2	9.3	63.2	
Other energy products	448.2	483.3	451.9	2,638.7	-7.6	8.1	-15.9	8.5	
FORESTRY PRODUCTS	1,647.3	1,485.6	1,615.0	9,627.7	0.2	1.4	-16.0	14.7	
Lumber and sawmill products	563.4	548.9	556.2	3,423.9	-1.7	-1.3	-20.8	18.1	
Woodpulp and other wood products	353.5	315.4	328.5	2,040.2	-5.5	-6.3	-10.4	4.3	
Newsprint and other paper and paperboard	730.3	621.2	730.4	4,163.6	4.9	8.0	-14.4	17.6	
INDUSTRIAL GOODS AND MATERIALS	2,303.2	2,503.6	2,418.8	14,245.5	-1.2	6.7	-10.2	25.7	
Metal ores	378.6	418.4	368.0	2,228.0	-8.3	-13.3	2.9	36.4	
Chemicals, plastics and fertilizers	611.7	599.5	568.8	3,520.0	1.4	11.6	-26.0	32.3	
Metals and alloys	834.0	943.6	949.7	5,543.8	-3.1	14.0	-7.1	19.6	
Other industrial goods and materials	478.9	542.0	532.2	2,953.7	5.8	7.0	-6.3	21.1	
MACHINERY AND EQUIPMENT	2,237.8	2,501.3	2,512.2	14,044.7	15.1	18.4	8.9	9.6	
Industrial and agricultural machinery	420.8	409.7	465.8	2,653.4	7.5	6.6	3.3	3.3	
Aircraft and other transportation equipment	376.8	607.7	511.1	2,898.1	15.7	16.4	23.4	-2.4	
Other machinery and equipment	1,440.2	1,483.9	1,535.3	8,493.1	17.5	23.2	6.0	16.9	
AUTOMOTIVE PRODUCTS	3,343.7	2,671.3	3,439.4	18,004.7	-2.9	11.1	-3.3	29.0	
Passenger autos and chassis	1,590.0	1,350.9	1,623.1	8,658.1	3.8	20.4	-11.8	38.5	
Trucks and other motor vehicles	905.2	502.5	822.5	4,344.4	-0.0	5.5	1.7	39.9	
Motor vehicle parts	848.5	817.9	993.9	5,002.2	-14.4	1.5	8.2	7.1	
OTHER CONSUMER GOODS	183.1	189.1	211.4	1,198.6	-0.4	3.4	-15.9	4.7	
SPECIAL TRANSACTIONS TRADE *	244.5	248.7	271.5	1,470.9	109.1	101.2	30.5	68.1	
UNALLOCATED ADJUSTMENTS *	-35.4	-41.8	-34.4	-215.9	-33.1	-30.8	-183.1	-50.1	
TOTAL	12,245.0	11,947.8	12,733.2	71,940.9	4.6	11.4	-8.8	19.0	

* Series has no seasonality.

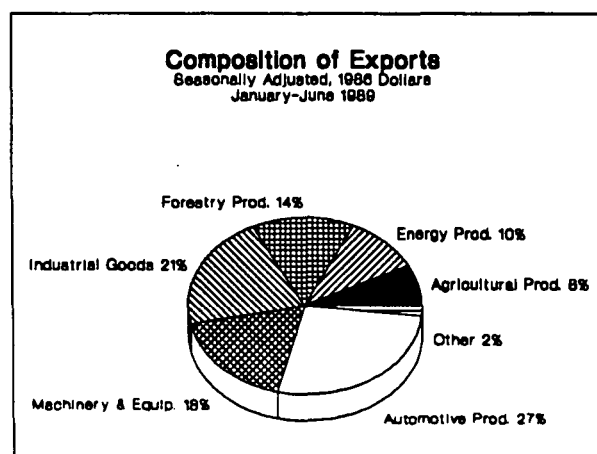
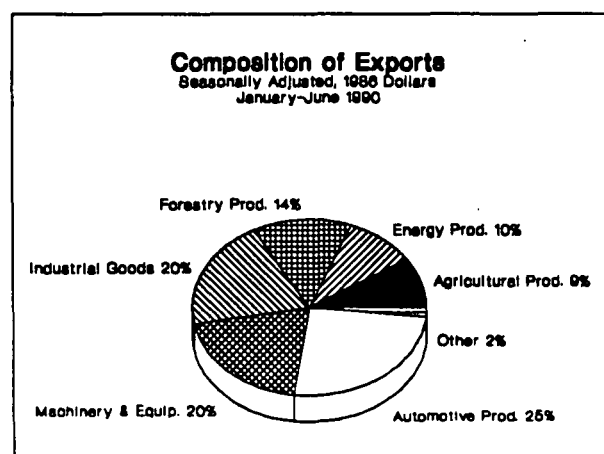
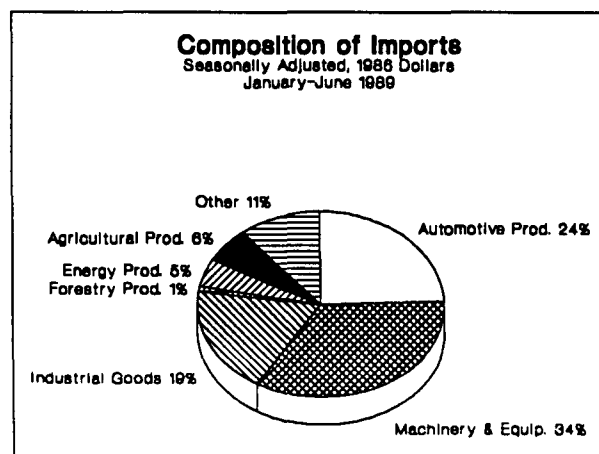
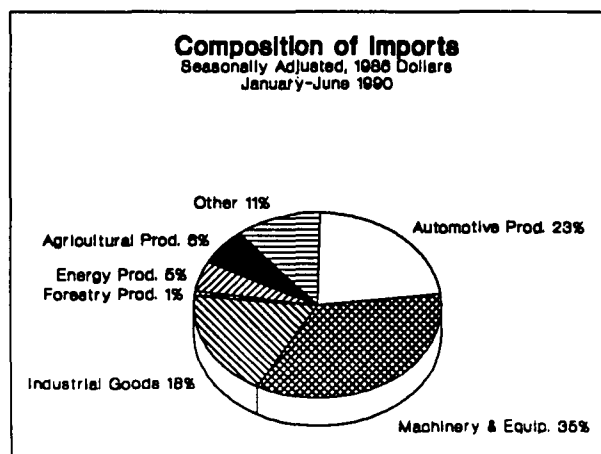


Table 7
Imports by Commodity Groupings in 1986 Dollars
 June 1990
 Balance of Payments Basis

	Seasonally adjusted					Raw values			
	Apr.	May	June	Year-to-date		Percentage change			
				Value	% change	June '90/June '89/June '88/June '87	June '89	June '88	June '87
	\$ millions								
AGRICULTURAL AND FISHING PRODUCTS	757.9	753.7	718.5	4,420.4	6.3	0.9	8.1	-1.6	
Fruits and vegetables	239.5	229.4	215.3	1,394.5	5.3	-1.0	11.2	-11.5	
Other agricultural and fishing products	518.5	524.2	503.2	3,026.0	6.7	1.9	6.5	4.5	
ENERGY PRODUCTS	638.7	617.5	578.6	3,648.3	7.6	20.2	12.2	-7.6	
Crude petroleum	366.8	365.8	346.8	2,107.2	12.3	28.1	12.1	1.1	
Other energy products	271.8	251.8	231.8	1,541.0	1.8	11.0	12.4	-15.9	
FORESTRY PRODUCTS	119.9	96.1	95.7	647.0	14.1	-5.3	-3.9	11.1	
INDUSTRIAL GOODS AND MATERIALS	2,207.0	2,064.0	2,063.8	12,820.6	0.8	-5.3	6.8	17.4	
Metals and metal ores	469.0	494.9	489.1	3,229.1	-6.1	-13.1	-3.7	25.4	
Chemicals and plastics	805.0	686.2	722.6	4,269.5	7.7	6.9	11.6	9.3	
Other industrial goods and materials	933.0	882.9	852.1	5,322.0	0.0	-8.9	11.0	18.1	
MACHINERY AND EQUIPMENT	4,166.5	4,178.7	3,907.3	24,434.4	3.2	-0.9	7.7	25.4	
Industrial and agricultural machinery	1,169.6	1,151.3	1,075.5	6,918.4	-4.9	-9.9	3.1	13.6	
Aircraft and other transportation equipment	460.9	435.6	380.0	2,700.0	-12.5	-16.9	7.7	26.4	
Office machines and equipment	872.4	771.8	823.0	5,087.1	13.4	7.8	10.1	21.4	
Other machinery and equipment	1,663.7	1,820.1	1,628.9	9,729.0	10.1	6.9	10.6	40.3	
AUTOMOTIVE PRODUCTS	2,702.0	2,826.4	2,723.0	15,853.6	-5.6	1.3	-4.5	-9.1	
Passenger autos and chassis	814.6	889.0	870.0	5,090.4	-9.0	-0.0	-3.8	-29.7	
Trucks and other motor vehicles	400.7	353.2	329.1	1,975.6	-1.2	12.9	-12.2	-15.6	
Motor vehicle parts	1,486.6	1,584.2	1,523.9	8,787.5	-4.5	-0.2	-3.4	10.5	
OTHER CONSUMER GOODS	1,339.3	1,288.2	1,278.8	7,709.5	4.8	6.0	6.5	6.1	
Apparel and footwear	241.1	244.7	255.7	1,480.8	2.8	12.0	-1.1	-8.3	
Miscellaneous consumer goods	1,098.2	1,043.5	1,023.1	6,228.7	5.2	4.8	8.2	10.2	
SPECIAL TRANSACTIONS TRADE *	230.8	249.6	301.4	1,504.2	-0.8	1.8	3.6	51.2	
UNALLOCATED ADJUSTMENTS *	-80.8	-85.5	-81.6	-489.1	-5.8	-6.4	1.7	15.0	
TOTAL	12,081.3	11,988.7	11,585.6	70,549.1	1.3	0.6	4.3	8.5	

* Series has no seasonality.



INTRODUCING A NEW SERVICE

In response to client demand for more timely reception of data from the *Preliminary Statement of Canadian International Trade* (catalogue 65-001P), the International Trade Division has initiated a fax service to provide tables from the publication on the morning of release (8:30 a.m. E.S.T.). This service is presented as part of a subscription package discount offer consisting of the printed publication, forwarded by mail, plus the tables faxed directly to you.

For more information on this or other products and services available from the International Trade Division, contact G. Blaney at (613) 951-9647.

To order, complete the form provided below. For faster service, call toll free in Canada 1-800-267-6677 or fax 1-613-951-1584.

GET THE FAX FIRST!

ORDER FORM				
<p>Mail to: For faster service call toll free in Canada 1-800-267-6677 Publication Sales FAX 1-613-951-1584 Statistics Canada Ottawa, Ontario K1A 0T6 (Please print) Company _____ Dept _____ Attention _____ Address _____ City _____ Tel. _____ Province _____ Postal Code _____ FAX _____</p>	<p><input type="checkbox"/> Purchase Order Number (Please enclose) _____</p> <p><input type="checkbox"/> Payment enclosed \$ _____</p> <p>CHARGE TO MY:</p> <p><input type="checkbox"/> MasterCard <input type="checkbox"/> VISA</p> <p>Account No. _____</p> <p>Expiry date _____</p> <p><input type="checkbox"/> Bill me later</p> <p>My client reference number at Statistics Canada _____</p> <p>Signature _____</p>			
Catalogue No.	Title	Quantity	Price	Total
10-002	Preliminary Statement of Canadian International Trade + Fax Service		Canada \$250 Foreign US\$350	
Cheques or money orders should be made payable to the Receiver General for Canada/Publications PF 03631				