

Labour Force Information

January 14 to 20, 2018

Release date: February 9, 2018



Statistics
Canada

Statistique
Canada

Canada

How to obtain more information

For information about this product or the wide range of services and data available from Statistics Canada, visit our website, www.statcan.gc.ca.

You can also contact us by

email at STATCAN.infostats-infostats.STATCAN@canada.ca

telephone, from Monday to Friday, 8:30 a.m. to 4:30 p.m., at the following numbers:

- | | |
|---|----------------|
| • Statistical Information Service | 1-800-263-1136 |
| • National telecommunications device for the hearing impaired | 1-800-363-7629 |
| • Fax line | 1-514-283-9350 |

Depository Services Program

- | | |
|------------------|----------------|
| • Inquiries line | 1-800-635-7943 |
| • Fax line | 1-800-565-7757 |

Standards of service to the public

Statistics Canada is committed to serving its clients in a prompt, reliable and courteous manner. To this end, Statistics Canada has developed standards of service that its employees observe. To obtain a copy of these service standards, please contact Statistics Canada toll-free at 1-800-263-1136. The service standards are also published on www.statcan.gc.ca under “Contact us” > “Standards of service to the public.”

Note of appreciation

Canada owes the success of its statistical system to a long-standing partnership between Statistics Canada, the citizens of Canada, its businesses, governments and other institutions. Accurate and timely statistical information could not be produced without their continued co-operation and goodwill.

Standard table symbols

The following symbols are used in Statistics Canada publications:

- | | |
|----------------|--|
| . | not available for any reference period |
| .. | not available for a specific reference period |
| ... | not applicable |
| 0 | true zero or a value rounded to zero |
| 0 ^s | value rounded to 0 (zero) where there is a meaningful distinction between true zero and the value that was rounded |
| ^p | preliminary |
| ^r | revised |
| x | suppressed to meet the confidentiality requirements of the <i>Statistics Act</i> |
| ^E | use with caution |
| F | too unreliable to be published |
| * | significantly different from reference category ($p < 0.05$) |

Published by authority of the Minister responsible for Statistics Canada

© Minister of Industry, 2018

All rights reserved. Use of this publication is governed by the Statistics Canada [Open Licence Agreement](#).

An HTML version is also available.

Cette publication est aussi disponible en français.

Publication information

Special requests (\$)

Custom tabulations can be arranged on an ad hoc or regular basis. This service enables you to specify tables and time series to meet your own requirements. The cost varies according to the request. For more information, contact us toll-free at 1-866-873-8788 or e-mail us at statcan.labour-travail.statcan@canada.ca.

Schedule of LFS releases

Release date

- February 9, 2018
- March 9, 2018
- April 6, 2018
- May 11, 2018
- June 8, 2018
- July 6, 2018
- August 10, 2018
- September 7, 2018
- October 5, 2018
- November 2, 2018
- December 7, 2018
- January 4, 2019

Reference period

- January 14 to 20, 2018
- February 11 to 17, 2018
- March 11 to 17, 2018
- April 15 to 21, 2018
- May 13 to 19, 2018
- June 10 to 16, 2018
- July 15 to 21, 2018
- August 12 to 18, 2018
- September 9 to 15, 2018
- October 7 to 13, 2018
- November 4 to 10, 2018
- December 2 to 8, 2018

Table of contents

The Daily release	6
Highlights	6
Charts	7
Chart 1 Employment indexes, Canada, seasonally adjusted	7
Chart 2 Unemployment, employment, and participation rates, Canada, seasonally adjusted	8
Chart 3 Employment indexes by industry, Canada, seasonally adjusted	9
Chart 4 Employment indexes by industry, Canada, seasonally adjusted	10
Chart 5 Employment indexes by industry, Canada, seasonally adjusted	11
Chart 6 Employment indexes by province, Canada, seasonally adjusted	12
Chart 7 Employment indexes by province, Canada, seasonally adjusted	13
Chart 8 Unemployment rate by province, January 2018	14
Statistical tables	15
Table 1 Labour force characteristics by age and sex, Canada, seasonally adjusted	15
Table 2 Employment by class of worker and industry, Canada, seasonally adjusted	17
Table 3 Labour force characteristics by province, seasonally adjusted	18
Table 4-1 Selected labour force characteristics (seasonally adjusted) — Newfoundland and Labrador	20
Table 4-2 Selected labour force characteristics (seasonally adjusted) — Prince Edward Island	21
Table 4-3 Selected labour force characteristics (seasonally adjusted) — Nova Scotia	22
Table 4-4 Selected labour force characteristics (seasonally adjusted) — New Brunswick	23
Table 4-5 Selected labour force characteristics (seasonally adjusted) — Quebec	24
Table 4-6 Selected labour force characteristics (seasonally adjusted) — Ontario	25
Table 4-7 Selected labour force characteristics (seasonally adjusted) — Manitoba	26
Table 4-8 Selected labour force characteristics (seasonally adjusted) — Saskatchewan	27
Table 4-9 Selected labour force characteristics (seasonally adjusted) — Alberta	28
Table 4-10 Selected labour force characteristics (seasonally adjusted) — British Columbia	29

Table 5-1 Labour force characteristics by census metropolitan area (seasonally adjusted) — three-month moving average.....	30
Table 5-2 Labour force characteristics by census metropolitan area (seasonally adjusted) — Monthly	35
Table 6-1 Labour force characteristics — by province and economic region, unadjusted for seasonality, three-month moving average ending in January 2017 and January 2018	36
Table 6-2 Labour force characteristics — by territory (seasonally adjusted) - three-month moving average.....	40
Table 7 Average usual hours and wages of employees by selected characteristics, Canada, unadjusted for seasonality	41
Table 8 Regional unemployment rates used by the Employment Insurance program, seasonally adjusted, three-month moving average	43
Data quality	45
Related products	47

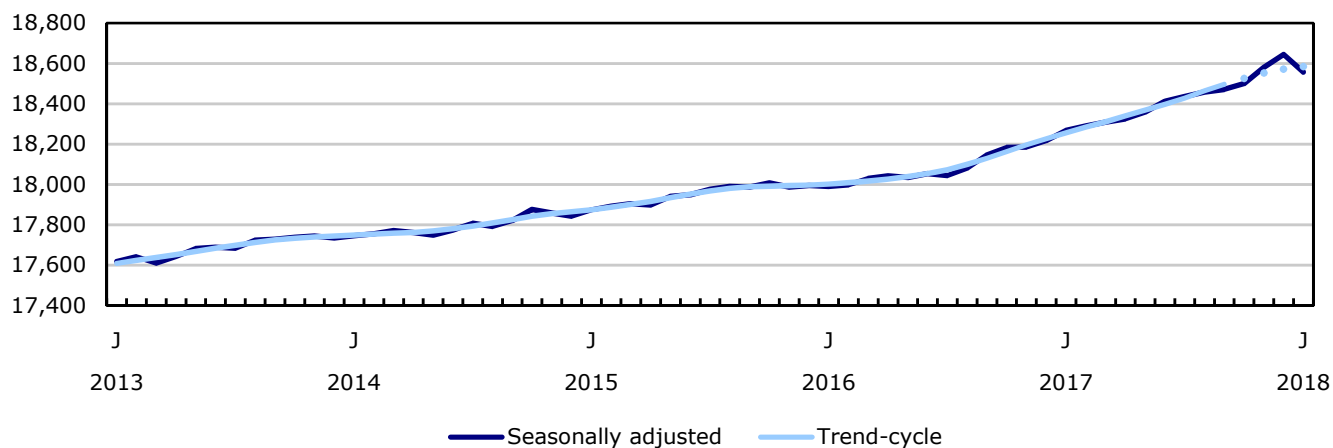
Labour Force Information

Highlights

Figure 1
Employment and unemployment rate, Canada, seasonally adjusted

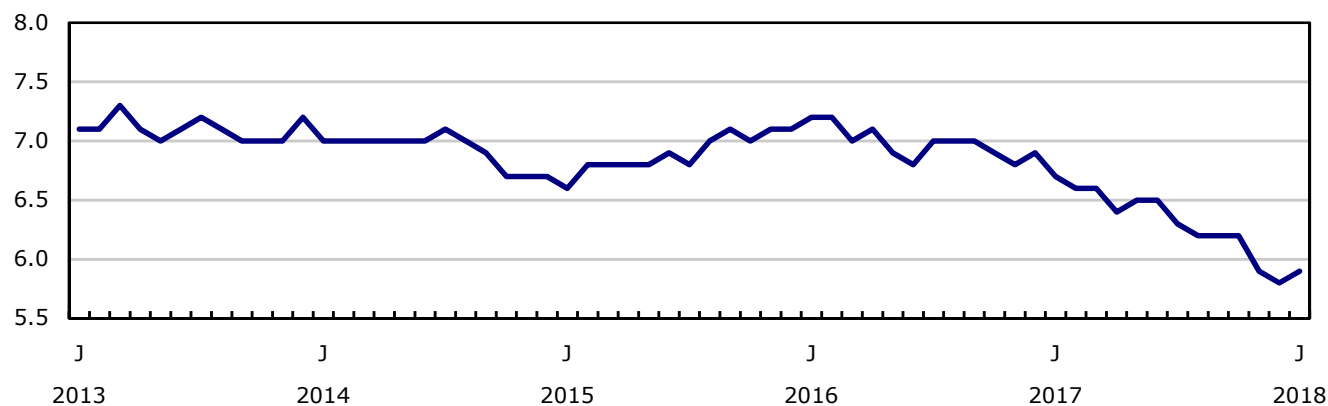
Employment

thousands



Unemployment rate

percent



The Daily release

Please note that the analytical text and charts previously found in this publication continue to be available in *The Daily* (<http://www.statcan.gc.ca/daily-quotidien/180209/dq180209a-eng.htm>).

Labour Market Indicators

www.statcan.gc.ca/pub/71-607-x/71-607-x2017001-eng.htm

Charts

Chart 1
Employment indexes, Canada, seasonally adjusted

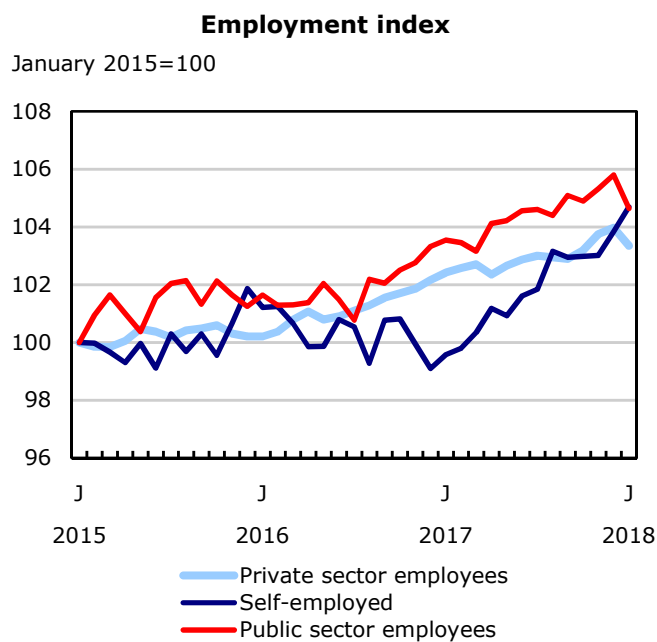
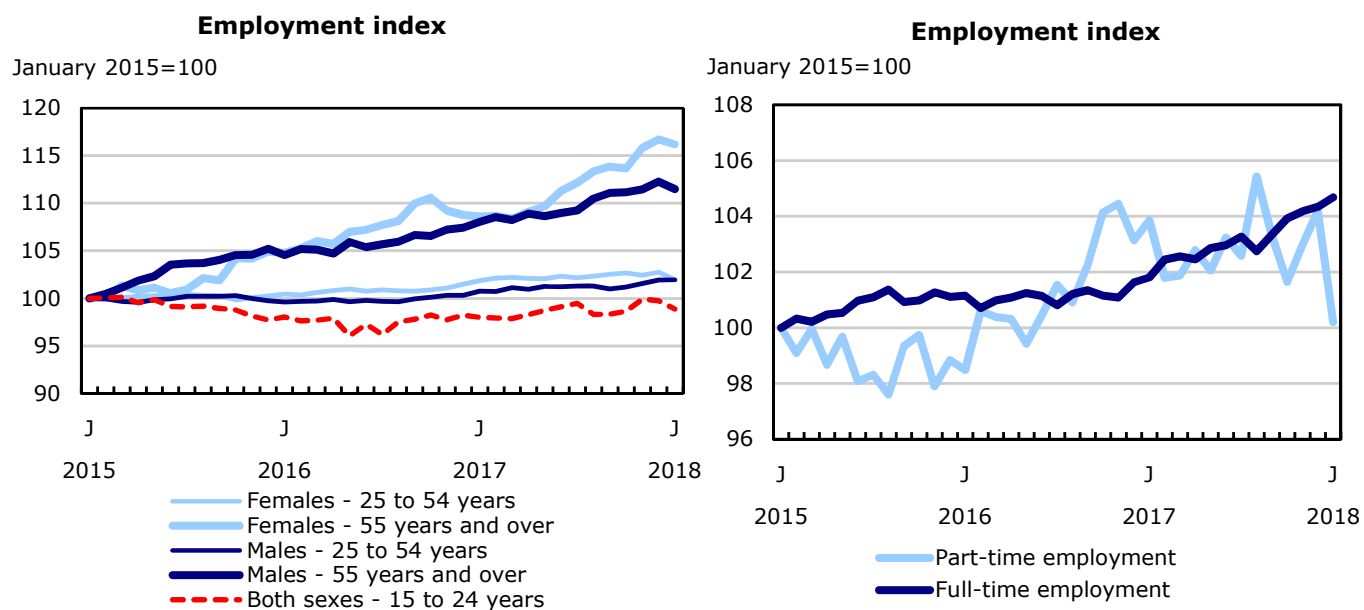


Chart 2
Unemployment, employment, and participation rates, Canada, seasonally adjusted

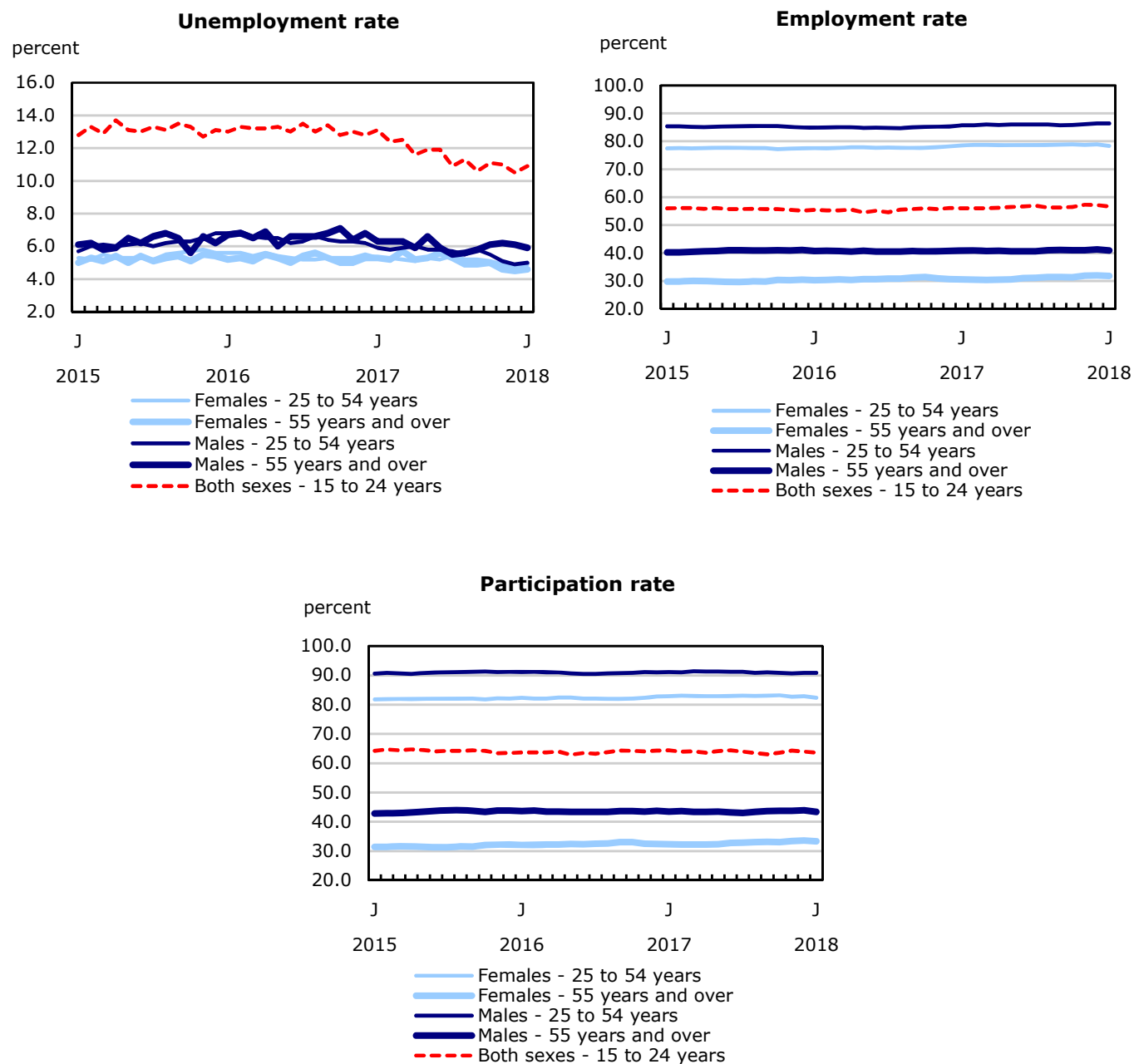


Chart 3
Employment indexes by industry, Canada, seasonally adjusted

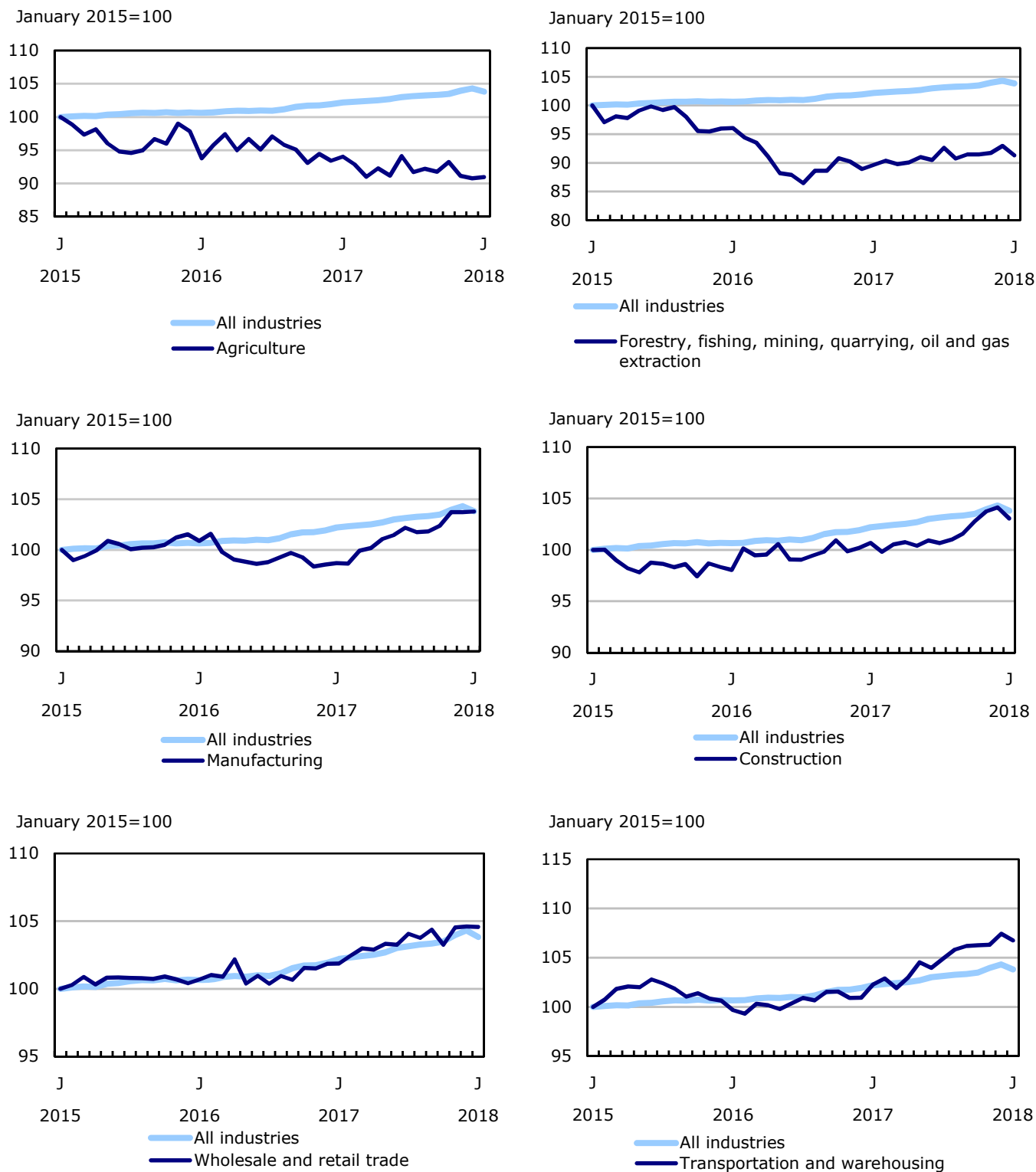


Chart 4
Employment indexes by industry, Canada, seasonally adjusted

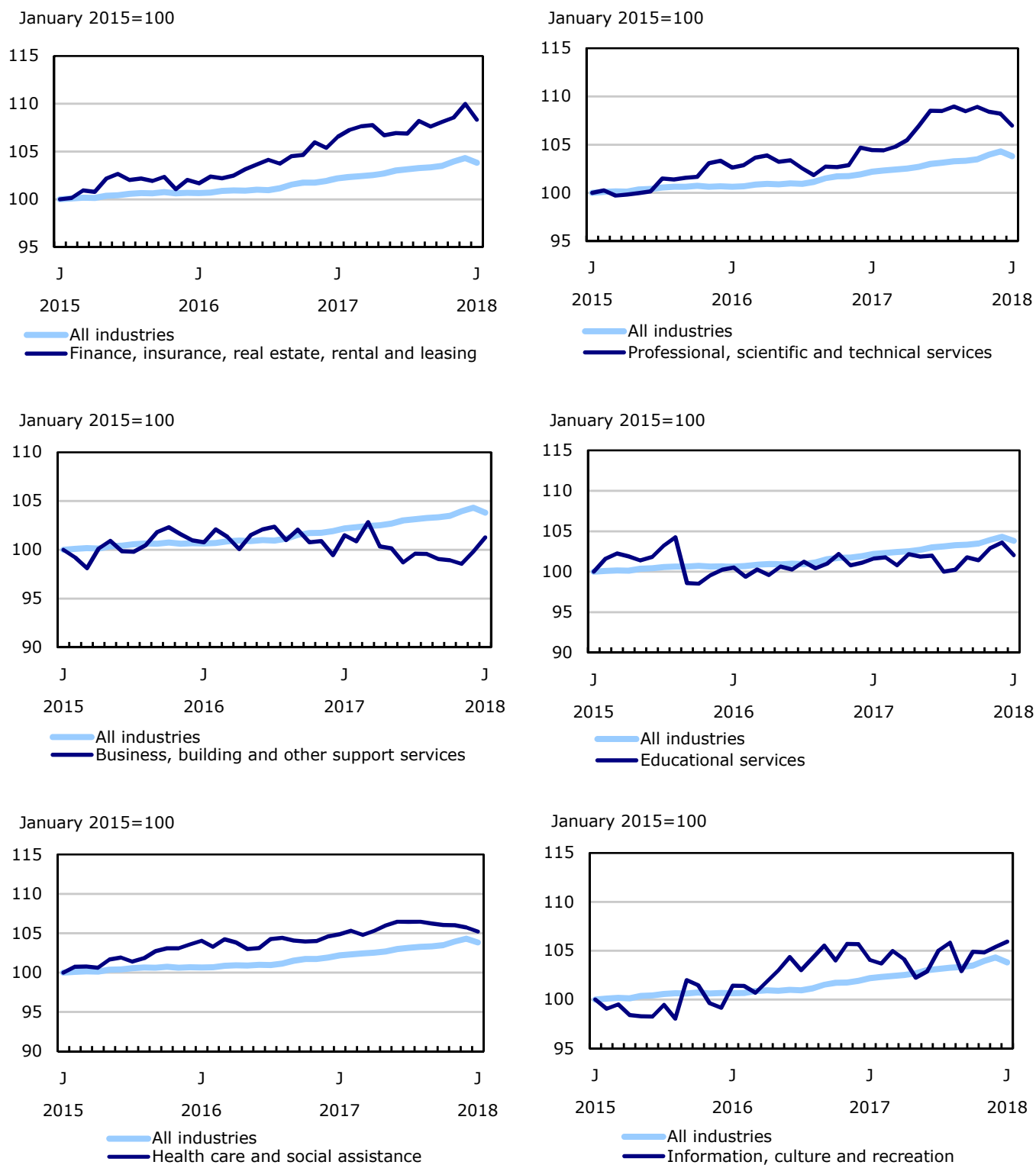


Chart 5
Employment indexes by industry, Canada, seasonally adjusted

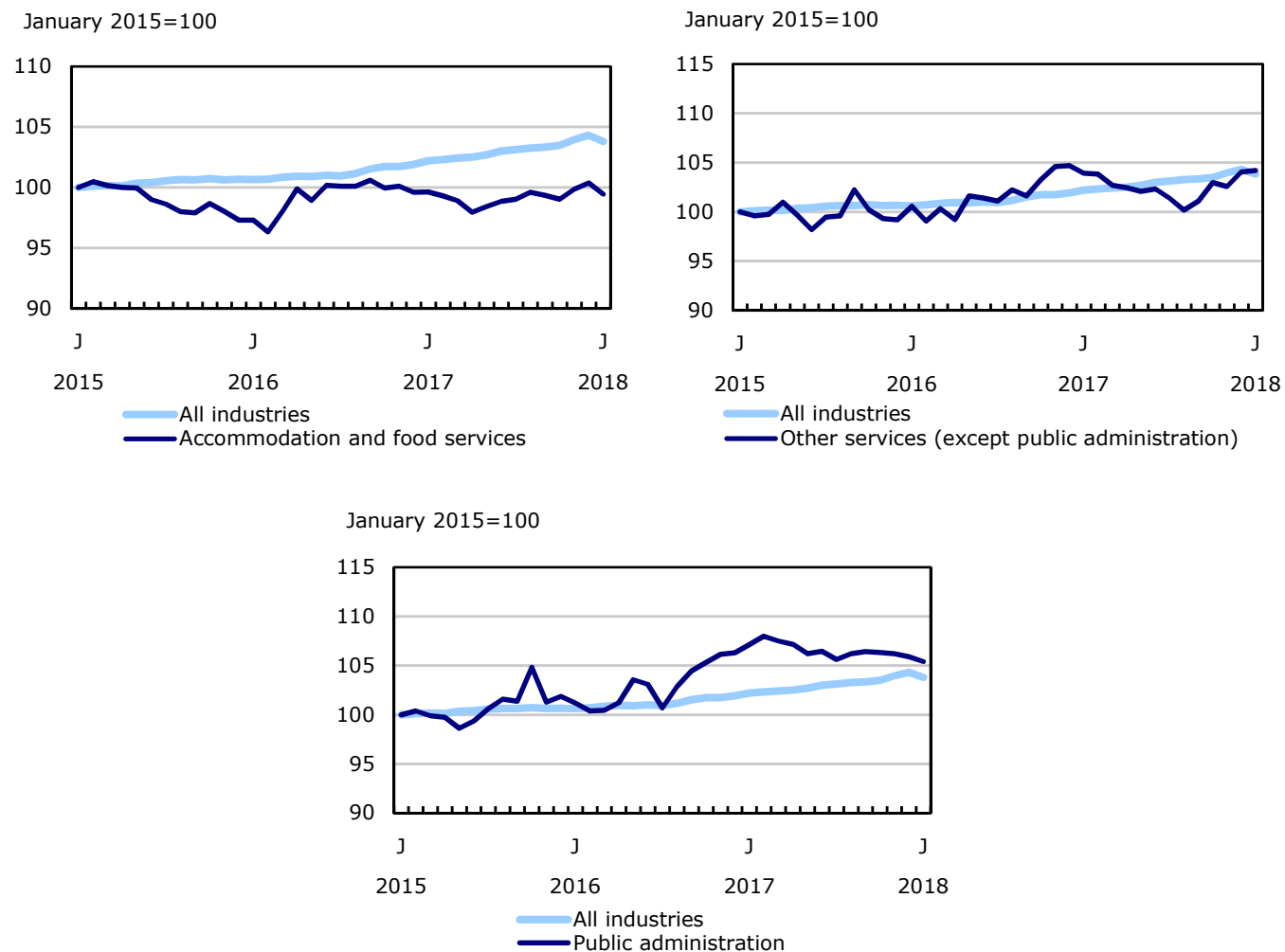
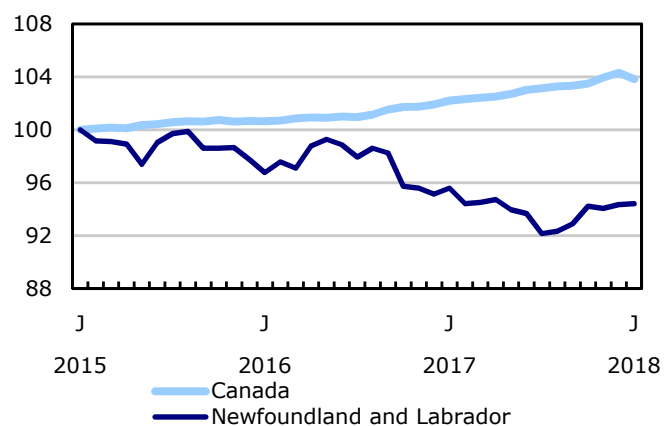
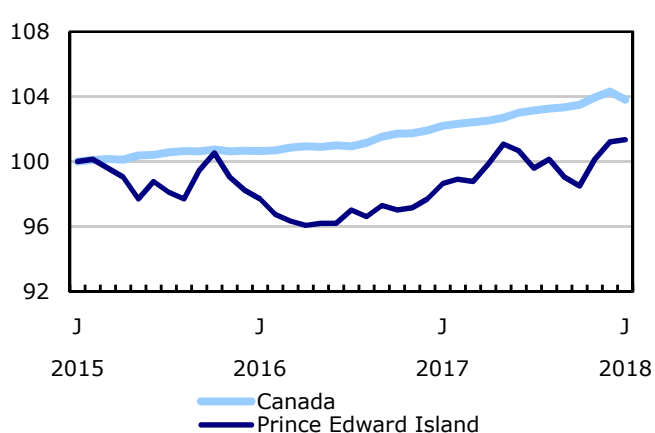


Chart 6
Employment indexes by province, Canada, seasonally adjusted

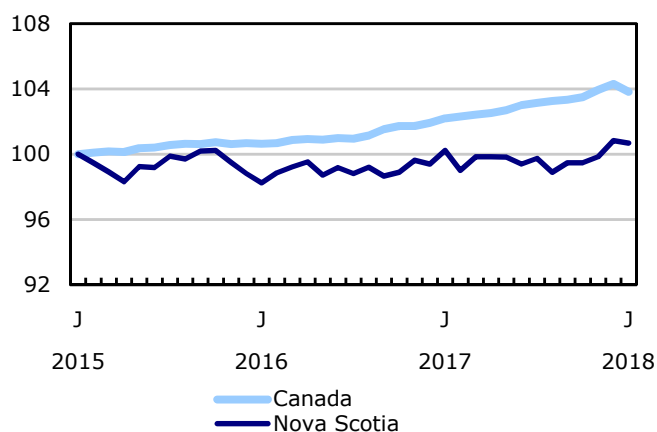
January 2015=100



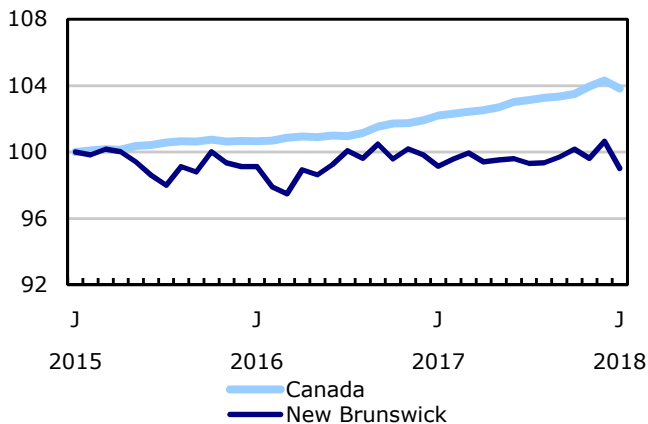
January 2015=100



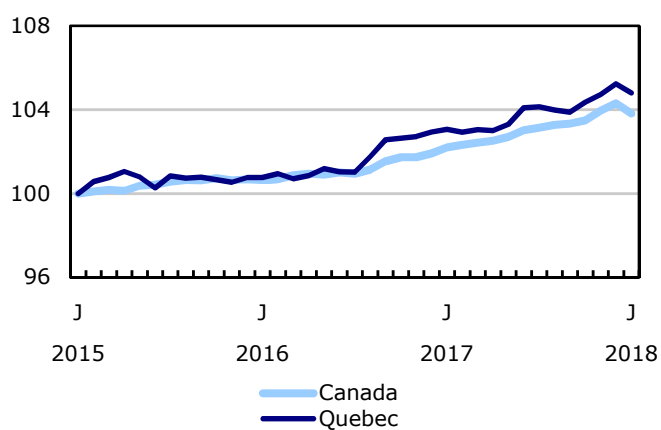
January 2015=100



January 2015=100



January 2015=100



January 2015=100

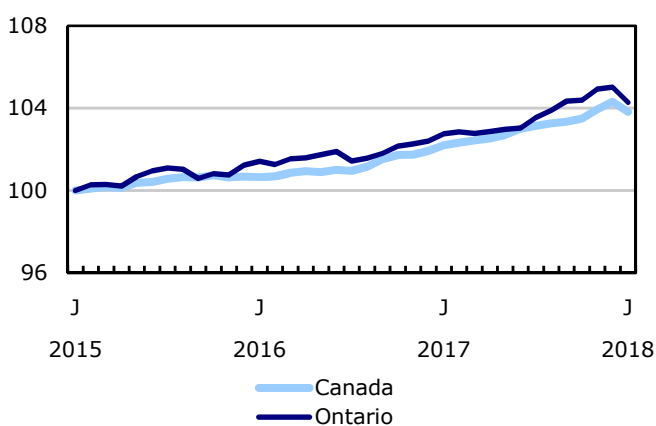
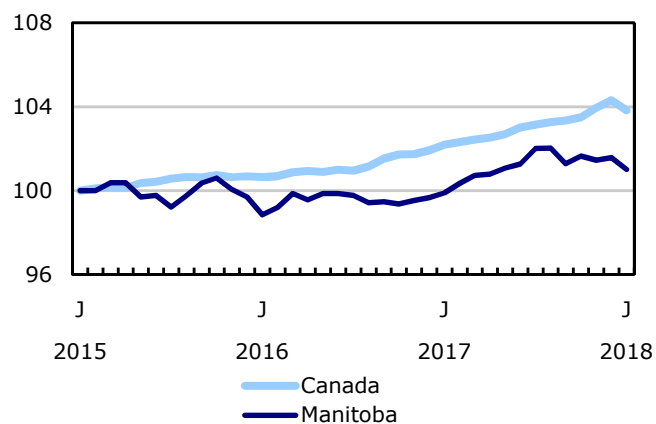
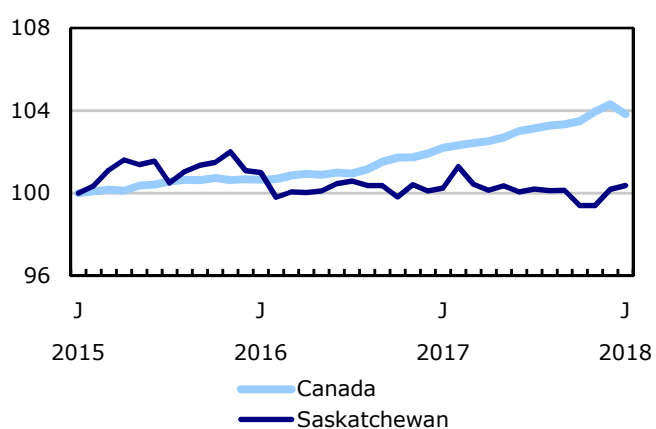


Chart 7
Employment indexes by province, Canada, seasonally adjusted

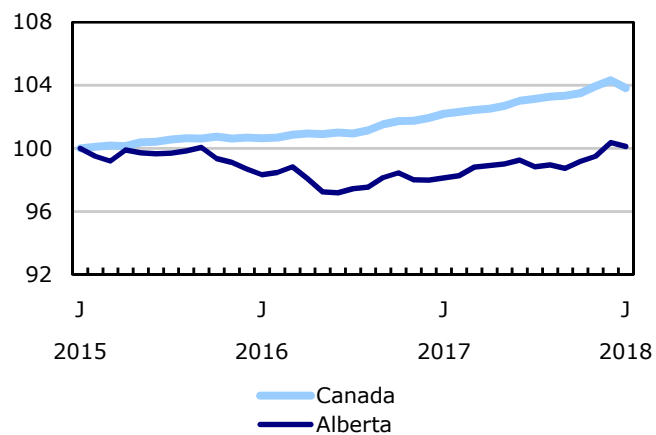
January 2015=100



January 2015=100



January 2015=100



January 2015=100

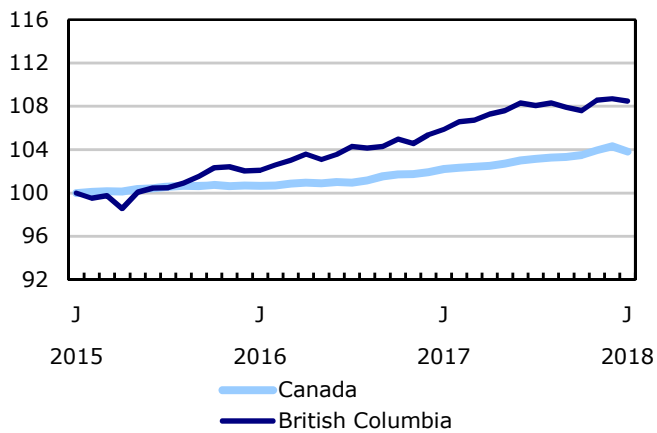
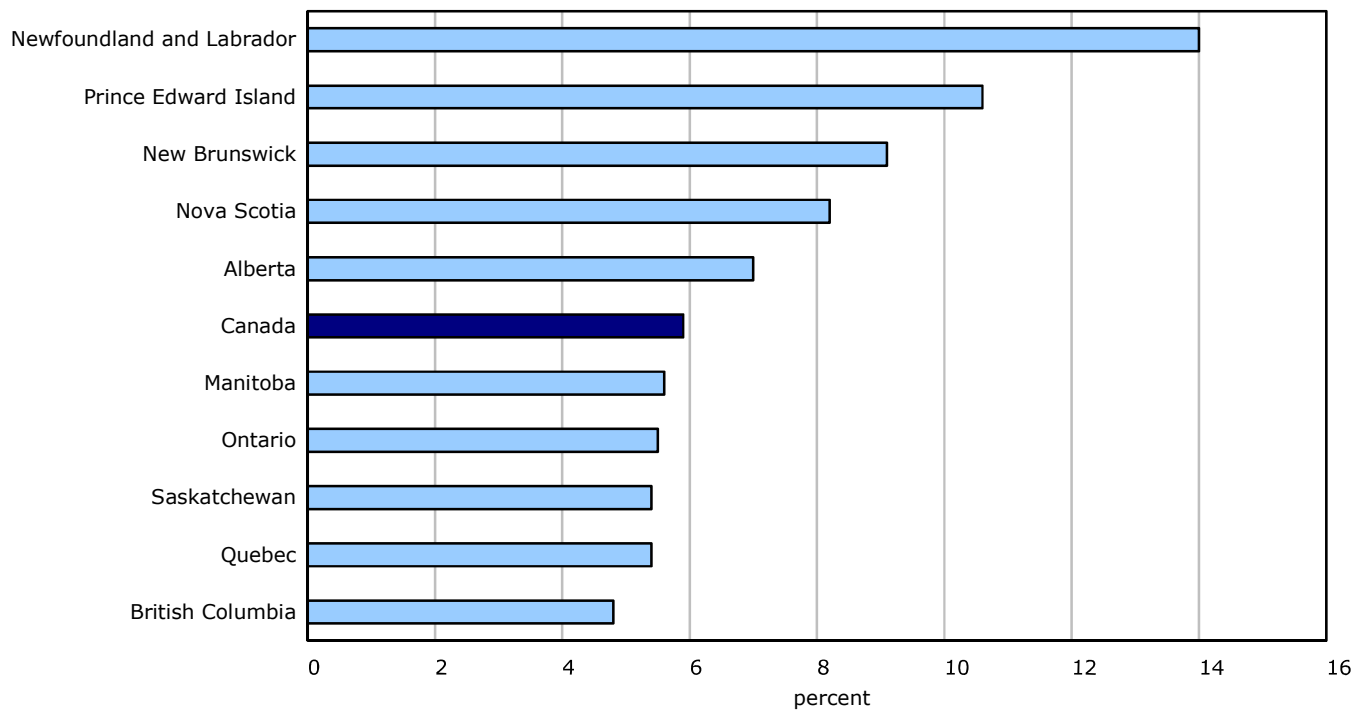


Chart 8
Unemployment rate by province, January 2018



Source: CANSIM table 282-0087.

Statistical tables

Table 1
Labour force characteristics by age and sex, Canada, seasonally adjusted

	December 2017	January 2018	S.E. ¹	Change from			Percent change from		
				last month	last December	twelve months ago	last month	last December	twelve months ago
				in thousands (except rates)			percent		
15 years and over, both sexes									
Population	30,058.9	30,094.5	...	35.6	35.6	352.6	0.1	0.1	1.2
Labour force	19,784.2	19,710.5	29.6	-73.7	-73.7	123.8	-0.4	-0.4	0.6
Employment	18,645.1	18,557.1	29.5	-88.0	-88.0	288.7	-0.5	-0.5	1.6
Full-time employment	15,074.7	15,123.7	41.0	49.0	49.0	414.1	0.3	0.3	2.8
Part-time employment	3,570.4	3,433.4	37.7	-137.0	-137.0	-125.4	-3.8	-3.8	-3.5
Unemployment	1,139.1	1,153.4	25.3	14.3	14.3	-164.9	1.3	1.3	-12.5
Participation rate	65.8	65.5	0.1	-0.3	-0.3	-0.4
Unemployment rate	5.8	5.9	0.1	0.1	0.1	-0.8
Employment rate	62.0	61.7	0.1	-0.3	-0.3	0.3
15 to 24 years, both sexes									
Population	4,346.1	4,345.9	...	-0.2	-0.2	-15.3	0.0	0.0	-0.4
Labour force	2,776.9	2,764.2	17.4	-12.7	-12.7	-46.0	-0.5	-0.5	-1.6
Employment	2,485.5	2,464.0	16.7	-21.5	-21.5	21.6	-0.9	-0.9	0.9
Full-time employment	1,264.7	1,289.4	19.8	24.7	24.7	54.6	2.0	2.0	4.4
Part-time employment	1,220.7	1,174.6	20.7	-46.1	-46.1	-33.0	-3.8	-3.8	-2.7
Unemployment	291.5	300.1	14.3	8.6	8.6	-67.7	3.0	3.0	-18.4
Participation rate	63.9	63.6	0.4	-0.3	-0.3	-0.8
Unemployment rate	10.5	10.9	0.5	0.4	0.4	-2.2
Employment rate	57.2	56.7	0.4	-0.5	-0.5	0.7
25 years and over, men									
Population	12,579.8	12,597.1	...	17.3	17.3	182.4	0.1	0.1	1.5
Labour force	8,958.9	8,945.9	15.8	-13.0	-13.0	75.8	-0.1	-0.1	0.9
Employment	8,491.9	8,478.9	16.7	-13.0	-13.0	141.8	-0.2	-0.2	1.7
Full-time employment	7,772.0	7,809.5	23.2	37.5	37.5	201.4	0.5	0.5	2.6
Part-time employment	719.9	669.4	19.2	-50.5	-50.5	-59.7	-7.0	-7.0	-8.2
Unemployment	467.0	467.0	14.6	0.0	0.0	-66.0	0.0	0.0	-12.4
Participation rate	71.2	71.0	0.1	-0.2	-0.2	-0.4
Unemployment rate	5.2	5.2	0.2	0.0	0.0	-0.8
Employment rate	67.5	67.3	0.1	-0.2	-0.2	0.1
25 years and over, women									
Population	13,133.0	13,151.6	...	18.6	18.6	185.6	0.1	0.1	1.4
Labour force	8,048.3	8,000.4	16.8	-47.9	-47.9	94.0	-0.6	-0.6	1.2
Employment	7,667.7	7,614.1	16.6	-53.6	-53.6	125.3	-0.7	-0.7	1.7
Full-time employment	6,037.9	6,024.7	26.7	-13.2	-13.2	158.0	-0.2	-0.2	2.7
Part-time employment	1,629.8	1,589.3	25.1	-40.5	-40.5	-32.8	-2.5	-2.5	-2.0
Unemployment	380.6	386.3	13.9	5.7	5.7	-31.3	1.5	1.5	-7.5
Participation rate	61.3	60.8	0.1	-0.5	-0.5	-0.2
Unemployment rate	4.7	4.8	0.2	0.1	0.1	-0.5
Employment rate	58.4	57.9	0.1	-0.5	-0.5	0.1
25 to 54 years, both sexes									
Population	14,689.0	14,694.1	...	5.1	5.1	57.2	0.0	0.0	0.4
Labour force	12,761.4	12,726.9	22.3	-34.5	-34.5	-4.1	-0.3	-0.3	0.0
Employment	12,141.9	12,099.1	23.8	-42.8	-42.8	80.3	-0.4	-0.4	0.7
Unemployment	619.5	627.8	18.6	8.3	8.3	-84.4	1.3	1.3	-11.9
Participation rate	86.9	86.6	0.2	-0.3	-0.3	-0.4
Unemployment rate	4.9	4.9	0.1	0.0	0.0	-0.7
Employment rate	82.7	82.3	0.2	-0.4	-0.4	0.2
25 to 54 years, men									
Population	7,312.2	7,314.3	...	2.1	2.1	28.8	0.0	0.0	0.4
Labour force	6,645.0	6,651.3	14.1	6.3	6.3	14.3	0.1	0.1	0.2
Employment	6,318.5	6,320.7	16.0	2.2	2.2	75.0	0.0	0.0	1.2
Unemployment	326.5	330.6	13.1	4.1	4.1	-60.7	1.3	1.3	-15.5
Participation rate	90.9	90.9	0.2	0.0	0.0	-0.2
Unemployment rate	4.9	5.0	0.2	0.1	0.1	-0.9
Employment rate	86.4	86.4	0.2	0.0	0.0	0.7

Table 1
Labour force characteristics by age and sex, Canada, seasonally adjusted

	December 2017	January 2018	S.E. ¹	Change from			Percent change from		
				last month	last December	twelve months ago	last month	last December	twelve months ago
				in thousands (except rates)					
25 to 54 years, women									
Population	7,376.8	7,379.8	...	3.0	3.0	28.4	0.0	0.0	0.4
Labour force	6,116.4	6,075.6	16.6	-40.8	-40.8	-18.4	-0.7	-0.7	-0.3
Employment	5,823.5	5,778.4	16.8	-45.1	-45.1	5.4	-0.8	-0.8	0.1
Unemployment	293.0	297.2	12.7	4.2	4.2	-23.8	1.4	1.4	-7.4
Participation rate	82.9	82.3	0.2	-0.6	-0.6	-0.6
Unemployment rate	4.8	4.9	0.2	0.1	0.1	-0.4
Employment rate	78.9	78.3	0.2	-0.6	-0.6	-0.2
55 years and over, both sexes									
Population	11,023.8	11,054.5	...	30.7	30.7	310.7	0.3	0.3	2.9
Labour force	4,245.9	4,219.4	18.9	-26.5	-26.5	173.9	-0.6	-0.6	4.3
Employment	4,017.7	3,993.9	18.9	-23.8	-23.8	186.7	-0.6	-0.6	4.9
Unemployment	228.2	225.5	10.2	-2.7	-2.7	-12.8	-1.2	-1.2	-5.4
Participation rate	38.5	38.2	0.2	-0.3	-0.3	0.5
Unemployment rate	5.4	5.3	0.2	-0.1	-0.1	-0.6
Employment rate	36.4	36.1	0.2	-0.3	-0.3	0.7
55 years and over, men									
Population	5,267.6	5,282.7	...	15.1	15.1	153.5	0.3	0.3	3.0
Labour force	2,314.0	2,294.6	12.7	-19.4	-19.4	61.5	-0.8	-0.8	2.8
Employment	2,173.4	2,158.2	12.9	-15.2	-15.2	66.8	-0.7	-0.7	3.2
Unemployment	140.5	136.4	7.7	-4.1	-4.1	-5.3	-2.9	-2.9	-3.7
Participation rate	43.9	43.4	0.2	-0.5	-0.5	-0.1
Unemployment rate	6.1	5.9	0.3	-0.2	-0.2	-0.4
Employment rate	41.3	40.9	0.2	-0.4	-0.4	0.1
55 years and over, women									
Population	5,756.2	5,771.7	...	15.5	15.5	157.1	0.3	0.3	2.8
Labour force	1,931.9	1,924.8	13.0	-7.1	-7.1	112.4	-0.4	-0.4	6.2
Employment	1,844.2	1,835.7	12.9	-8.5	-8.5	119.9	-0.5	-0.5	7.0
Unemployment	87.7	89.1	6.6	1.4	1.4	-7.5	1.6	1.6	-7.8
Participation rate	33.6	33.3	0.2	-0.3	-0.3	1.0
Unemployment rate	4.5	4.6	0.3	0.1	0.1	-0.7
Employment rate	32.0	31.8	0.2	-0.2	-0.2	1.2

1. Average standard error of change in two consecutive months (see "Sampling Errors" in the **Data Quality** section for further explanations).

Note: Related CANSIM table 282-0087. The sum of individual categories may not always add to the total due to rounding.

Table 2
Employment by class of worker and industry, Canada, seasonally adjusted

Class of worker	December 2017	January 2018	S.E. ¹	Change from			Percent change from		
				last month	last December	twelve months ago	last month	last December	twelve months ago
				in thousands			percent		
Employees	15,780.0	15,668.0	35.7	-112.0	-112.0	147.6	-0.7	-0.7	1.0
Self-employed ²	2,865.1	2,889.0	25.3	23.9	23.9	141.0	0.8	0.8	5.1
Public/private sector employees									
Public sector employees	3,759.0	3,717.8	20.4	-41.2	-41.2	39.2	-1.1	-1.1	1.1
Private sector employees	12,021.0	11,950.3	36.2	-70.7	-70.7	108.6	-0.6	-0.6	0.9
Industry	18,645.1	18,557.1	29.5	-88.0	-88.0	288.7	-0.5	-0.5	1.6
Goods-producing sector	3,959.3	3,943.1	16.5	-16.2	-16.2	110.7	-0.4	-0.4	2.9
Agriculture	275.9	276.5	5.4	0.6	0.6	-9.3	0.2	0.2	-3.3
Forestry, fishing, mining, quarrying, oil and gas extraction ³	336.9	331.0	5.0	-5.9	-5.9	6.0	-1.8	-1.8	1.8
Utilities	128.3	131.6	2.3	3.3	3.3	-5.5	2.6	2.6	-4.0
Construction	1,448.8	1,433.9	11.1	-14.9	-14.9	33.1	-1.0	-1.0	2.4
Manufacturing	1,769.4	1,770.2	10.9	0.8	0.8	86.5	0.0	0.0	5.1
Services-producing sector	14,685.8	14,613.9	28.1	-71.9	-71.9	177.9	-0.5	-0.5	1.2
Wholesale and retail trade	2,840.7	2,839.9	15.1	-0.8	-0.8	73.6	0.0	0.0	2.7
Transportation and warehousing	970.8	964.9	8.4	-5.9	-5.9	40.7	-0.6	-0.6	4.4
Finance, insurance, real estate, rental and leasing	1,195.6	1,177.6	8.9	-18.0	-18.0	19.3	-1.5	-1.5	1.7
Professional, scientific and technical services	1,463.5	1,446.8	11.1	-16.7	-16.7	34.1	-1.1	-1.1	2.4
Business, building and other support services	756.1	767.1	10.2	11.0	11.0	-1.6	1.5	1.5	-0.2
Educational services	1,307.2	1,287.6	10.6	-19.6	-19.6	5.5	-1.5	-1.5	0.4
Health care and social assistance	2,381.5	2,370.3	10.9	-11.2	-11.2	7.9	-0.5	-0.5	0.3
Information, culture and recreation	796.4	800.3	10.5	3.9	3.9	14.1	0.5	0.5	1.8
Accommodation and food services	1,226.7	1,215.4	11.7	-11.3	-11.3	-2.2	-0.9	-0.9	-0.2
Other services (except public administration)	793.8	795.0	8.4	1.2	1.2	2.1	0.2	0.2	0.3
Public administration	953.4	949.0	7.1	-4.4	-4.4	-15.6	-0.5	-0.5	-1.6

1. Average standard error of change in two consecutive months (see "Sampling Errors" in the **Data Quality** section for further explanations).

2. Includes both incorporated and unincorporated working owners, self-employed persons who do not have a business and persons working in a family business without pay.

3. Also referred to as "Natural resources".

Note: Related CANSIM tables 282-0088 and 282-0089. The sum of individual categories may not always add to the total due to rounding.

Table 3
Labour force characteristics by province, seasonally adjusted

	December 2017	January 2018	S.E. ¹	Change from			Percent change from		
				last month	last December	twelve months ago	last month	last December	twelve months ago
				in thousands (except rates)			percent		
Newfoundland and Labrador									
Population	445.1	444.9	...	-0.2	-0.2	-0.3	0.0	0.0	-0.1
Labour force	264.0	262.1	2.0	-1.9	-1.9	-2.7	-0.7	-0.7	-1.0
Employment	225.1	225.3	2.0	0.2	0.2	-2.8	0.1	0.1	-1.2
Full-time employment	191.0	191.3	2.5	0.3	0.3	0.4	0.2	0.2	0.2
Part-time employment	34.2	34.0	1.9	-0.2	-0.2	-3.3	-0.6	-0.6	-8.8
Unemployment	38.9	36.8	2.0	-2.1	-2.1	0.1	-5.4	-5.4	0.3
Participation rate	59.3	58.9	0.4	-0.4	-0.4	-0.6
Unemployment rate	14.7	14.0	0.7	-0.7	-0.7	0.1
Employment rate	50.6	50.6	0.5	0.0	0.0	-0.6
Prince Edward Island									
Population	124.4	124.5	...	0.1	0.1	1.9	0.1	0.1	1.5
Labour force	82.7	83.8	0.6	1.1	1.1	2.8	1.3	1.3	3.5
Employment	74.8	74.9	0.6	0.1	0.1	2.0	0.1	0.1	2.7
Full-time employment	63.3	62.2	0.8	-1.1	-1.1	0.7	-1.7	-1.7	1.1
Part-time employment	11.4	12.7	0.7	1.3	1.3	1.3	11.4	11.4	11.4
Unemployment	8.0	8.9	0.6	0.9	0.9	0.8	11.3	11.3	9.9
Participation rate	66.5	67.3	0.5	0.8	0.8	1.2
Unemployment rate	9.7	10.6	0.7	0.9	0.9	0.6
Employment rate	60.1	60.2	0.5	0.1	0.1	0.7
Nova Scotia									
Population	795.3	795.8	...	0.5	0.5	5.5	0.1	0.1	0.7
Labour force	493.8	494.0	2.7	0.2	0.2	4.4	0.0	0.0	0.9
Employment	454.2	453.5	2.7	-0.7	-0.7	2.0	-0.2	-0.2	0.4
Full-time employment	369.3	370.6	3.6	1.3	1.3	7.3	0.4	0.4	2.0
Part-time employment	84.9	82.8	3.3	-2.1	-2.1	-5.5	-2.5	-2.5	-6.2
Unemployment	39.6	40.5	2.5	0.9	0.9	2.4	2.3	2.3	6.3
Participation rate	62.1	62.1	0.3	0.0	0.0	0.1
Unemployment rate	8.0	8.2	0.5	0.2	0.2	0.4
Employment rate	57.1	57.0	0.3	-0.1	-0.1	-0.1
New Brunswick									
Population	625.7	626.0	...	0.3	0.3	2.0	0.0	0.0	0.3
Labour force	386.6	385.6	2.2	-1.0	-1.0	0.4	-0.3	-0.3	0.1
Employment	356.5	350.7	2.2	-5.8	-5.8	-0.5	-1.6	-1.6	-0.1
Full-time employment	304.9	301.3	2.8	-3.6	-3.6	1.6	-1.2	-1.2	0.5
Part-time employment	51.5	49.4	2.3	-2.1	-2.1	-2.0	-4.1	-4.1	-3.9
Unemployment	30.1	34.9	1.9	4.8	4.8	0.8	15.9	15.9	2.3
Participation rate	61.8	61.6	0.3	-0.2	-0.2	-0.1
Unemployment rate	7.8	9.1	0.5	1.3	1.3	0.2
Employment rate	57.0	56.0	0.4	-1.0	-1.0	-0.3
Quebec									
Population	6,953.5	6,958.2	...	4.7	4.7	48.5	0.1	0.1	0.7
Labour force	4,510.1	4,508.6	15.2	-1.5	-1.5	30.8	0.0	0.0	0.7
Employment	4,283.9	4,266.5	15.5	-17.4	-17.4	70.5	-0.4	-0.4	1.7
Full-time employment	3,475.9	3,489.6	20.6	13.7	13.7	113.5	0.4	0.4	3.4
Part-time employment	808.1	776.9	19.2	-31.2	-31.2	-43.0	-3.9	-3.9	-5.2
Unemployment	226.1	242.1	12.9	16.0	16.0	-39.8	7.1	7.1	-14.1
Participation rate	64.9	64.8	0.2	-0.1	-0.1	0.0
Unemployment rate	5.0	5.4	0.3	0.4	0.4	-0.9
Employment rate	61.6	61.3	0.2	-0.3	-0.3	0.6
Ontario									
Population	11,771.9	11,793.7	...	21.8	21.8	189.4	0.2	0.2	1.6
Labour force	7,648.3	7,593.5	20.1	-54.8	-54.8	42.7	-0.7	-0.7	0.6
Employment	7,223.8	7,172.9	19.6	-50.9	-50.9	104.3	-0.7	-0.7	1.5
Full-time employment	5,851.4	5,859.9	27.5	8.5	8.5	150.5	0.1	0.1	2.6
Part-time employment	1,372.4	1,313.1	25.7	-59.3	-59.3	-46.1	-4.3	-4.3	-3.4
Unemployment	424.5	420.6	16.8	-3.9	-3.9	-61.6	-0.9	-0.9	-12.8
Participation rate	65.0	64.4	0.2	-0.6	-0.6	-0.7
Unemployment rate	5.6	5.5	0.2	-0.1	-0.1	-0.9
Employment rate	61.4	60.8	0.2	-0.6	-0.6	-0.1

Table 3
Labour force characteristics by province, seasonally adjusted

	December 2017	January 2018	S.E. ¹	Change from			Percent change from		
				last month	last December	twelve months ago	last month	last December	twelve months ago
				in thousands (except rates)			percent		
Manitoba									
Population	1,018.9	1,019.5	...	0.6	0.6	13.4	0.1	0.1	1.3
Labour force	684.5	680.4	2.6	-4.1	-4.1	5.0	-0.6	-0.6	0.7
Employment	646.3	642.7	2.6	-3.6	-3.6	7.1	-0.6	-0.6	1.1
Full-time employment	520.0	512.3	3.6	-7.7	-7.7	-2.7	-1.5	-1.5	-0.5
Part-time employment	126.3	130.4	3.3	4.1	4.1	9.8	3.2	3.2	8.1
Unemployment	38.2	37.8	2.1	-0.4	-0.4	-2.0	-1.0	-1.0	-5.0
Participation rate	67.2	66.7	0.3	-0.5	-0.5	-0.4
Unemployment rate	5.6	5.6	0.3	0.0	0.0	-0.3
Employment rate	63.4	63.0	0.3	-0.4	-0.4	-0.2
Saskatchewan									
Population	879.9	880.9	...	1.0	1.0	8.2	0.1	0.1	0.9
Labour force	608.1	602.3	2.5	-5.8	-5.8	-4.8	-1.0	-1.0	-0.8
Employment	568.3	569.4	2.5	1.1	1.1	0.7	0.2	0.2	0.1
Full-time employment	462.3	468.5	3.4	6.2	6.2	3.9	1.3	1.3	0.8
Part-time employment	106.0	100.9	3.2	-5.1	-5.1	-3.2	-4.8	-4.8	-3.1
Unemployment	39.8	32.8	2.1	-7.0	-7.0	-5.6	-17.6	-17.6	-14.6
Participation rate	69.1	68.4	0.3	-0.7	-0.7	-1.2
Unemployment rate	6.5	5.4	0.3	-1.1	-1.1	-0.9
Employment rate	64.6	64.6	0.3	0.0	0.0	-0.6
Alberta									
Population	3,443.7	3,447.3	...	3.6	3.6	35.9	0.1	0.1	1.1
Labour force	2,494.2	2,489.2	9.8	-5.0	-5.0	3.2	-0.2	-0.2	0.1
Employment	2,320.4	2,314.5	10.1	-5.9	-5.9	45.9	-0.3	-0.3	2.0
Full-time employment	1,889.8	1,917.3	13.9	27.5	27.5	88.8	1.5	1.5	4.9
Part-time employment	430.6	397.2	12.9	-33.4	-33.4	-42.9	-7.8	-7.8	-9.7
Unemployment	173.8	174.8	9.0	1.0	1.0	-42.6	0.6	0.6	-19.6
Participation rate	72.4	72.2	0.3	-0.2	-0.2	-0.7
Unemployment rate	7.0	7.0	0.4	0.0	0.0	-1.7
Employment rate	67.4	67.1	0.3	-0.3	-0.3	0.6
British Columbia									
Population	4,000.7	4,003.7	...	3.0	3.0	48.0	0.1	0.1	1.2
Labour force	2,612.0	2,610.9	10.4	-1.1	-1.1	42.0	0.0	0.0	1.6
Employment	2,491.9	2,486.8	10.4	-5.1	-5.1	59.5	-0.2	-0.2	2.5
Full-time employment	1,946.7	1,950.8	15.7	4.1	4.1	50.0	0.2	0.2	2.6
Part-time employment	545.1	535.9	14.6	-9.2	-9.2	9.4	-1.7	-1.7	1.8
Unemployment	120.2	124.1	8.2	3.9	3.9	-17.5	3.2	3.2	-12.4
Participation rate	65.3	65.2	0.3	-0.1	-0.1	0.3
Unemployment rate	4.6	4.8	0.3	0.2	0.2	-0.7
Employment rate	62.3	62.1	0.3	-0.2	-0.2	0.7

1. Average standard error of change in two consecutive months (see "Sampling Errors" in the **Data Quality** section for further explanations).

Note: Related CANSIM table 282-0087. The sum of individual categories may not always add to the total due to rounding.

Table 4-1

Selected labour force characteristics (seasonally adjusted) — Newfoundland and Labrador

	December 2017	January 2018	S.E. ¹	Change from			Percent change from		
				last month	last December	twelve months ago	last month	last December	twelve months ago
				in thousands (except rates)					
Both sexes, 15 years and over									
Population	445.1	444.9	...	-0.2	-0.2	-0.3	0.0	0.0	-0.1
Labour force	264.0	262.1	2.0	-1.9	-1.9	-2.7	-0.7	-0.7	-1.0
Employment	225.1	225.3	2.0	0.2	0.2	-2.8	0.1	0.1	-1.2
Full-time employment	191.0	191.3	2.5	0.3	0.3	0.4	0.2	0.2	0.2
Unemployment	38.9	36.8	2.0	-2.1	-2.1	0.1	-5.4	-5.4	0.3
Participation rate	59.3	58.9	0.4	-0.4	-0.4	-0.6
Unemployment rate	14.7	14.0	0.7	-0.7	-0.7	0.1
Employment rate	50.6	50.6	0.5	0.0	0.0	-0.6
Both sexes, 15 to 24 years									
Population	54.4	54.4	...	0.0	0.0	-0.6	0.0	0.0	-1.1
Labour force	33.0	32.4	0.9	-0.6	-0.6	-2.0	-1.8	-1.8	-5.8
Employment	27.2	26.9	0.8	-0.3	-0.3	-1.0	-1.1	-1.1	-3.6
Unemployment	5.8	5.5	0.9	-0.3	-0.3	-1.0	-5.2	-5.2	-15.4
Participation rate	60.7	59.6	1.7	-1.1	-1.1	-2.9
Unemployment rate	17.6	17.0	2.3	-0.6	-0.6	-1.9
Employment rate	50.0	49.4	1.6	-0.6	-0.6	-1.3
Men, 25 years and over									
Population	190.2	190.2	...	0.0	0.0	0.1	0.0	0.0	0.1
Labour force	118.8	118.9	1.3	0.1	0.1	-0.9	0.1	0.1	-0.8
Employment	97.3	99.0	1.4	1.7	1.7	-1.0	1.7	1.7	-1.0
Unemployment	21.5	19.9	1.4	-1.6	-1.6	0.1	-7.4	-7.4	0.5
Participation rate	62.5	62.5	0.7	0.0	0.0	-0.5
Unemployment rate	18.1	16.7	1.1	-1.4	-1.4	0.2
Employment rate	51.2	52.1	0.7	0.9	0.9	-0.5
Women, 25 years and over									
Population	200.4	200.3	...	-0.1	-0.1	0.3	0.0	0.0	0.2
Labour force	112.2	110.8	1.1	-1.4	-1.4	0.2	-1.2	-1.2	0.2
Employment	100.6	99.3	1.1	-1.3	-1.3	-1.0	-1.3	-1.3	-1.0
Unemployment	11.6	11.4	1.0	-0.2	-0.2	1.0	-1.7	-1.7	9.6
Participation rate	56.0	55.3	0.5	-0.7	-0.7	0.0
Unemployment rate	10.3	10.3	0.9	0.0	0.0	0.9
Employment rate	50.2	49.6	0.5	-0.6	-0.6	-0.6
Industry	225.1	225.3	2.0	0.2	0.2	-2.8	0.1	0.1	-1.2
Goods-producing sector	48.4	49.3	1.4	0.9	0.9	1.7	1.9	1.9	3.6
Agriculture	2.7	2.6	0.4	-0.1	-0.1	1.5	-3.7	-3.7	136.4
Forestry, fishing, mining, quarrying, oil and gas extraction ²	12.0	10.6	0.8	-1.4	-1.4	-2.6	-11.7	-11.7	-19.7
Utilities	3.4	3.3	0.2	-0.1	-0.1	0.5	-2.9	-2.9	17.9
Construction	20.1	22.1	1.0	2.0	2.0	0.2	10.0	10.0	0.9
Manufacturing	10.2	10.7	0.7	0.5	0.5	2.1	4.9	4.9	24.4
Services-producing sector	176.7	175.9	1.7	-0.8	-0.8	-4.6	-0.5	-0.5	-2.5
Wholesale and retail trade	38.8	38.2	0.9	-0.6	-0.6	-3.5	-1.5	-1.5	-8.4
Transportation and warehousing	12.3	12.0	0.5	-0.3	-0.3	1.7	-2.4	-2.4	16.5
Finance, insurance, real estate, rental and leasing	6.9	6.9	0.4	0.0	0.0	0.0	0.0	0.0	0.0
Professional, scientific and technical services	8.5	8.4	0.5	-0.1	-0.1	-2.2	-1.2	-1.2	-20.8
Business, building and other support services	6.4	6.7	0.5	0.3	0.3	0.2	4.7	4.7	3.1
Educational services	15.7	15.6	0.6	-0.1	-0.1	1.1	-0.6	-0.6	7.6
Health care and social assistance	38.1	38.1	0.7	0.0	0.0	-2.3	0.0	0.0	-5.7
Information, culture and recreation	6.7	6.2	0.5	-0.5	-0.5	-1.6	-7.5	-7.5	-20.5
Accommodation and food services	15.8	15.6	0.7	-0.2	-0.2	1.0	-1.3	-1.3	6.8
Other services (except public administration)	11.3	12.3	0.5	1.0	1.0	0.4	8.8	8.8	3.4
Public administration	16.4	15.9	0.5	-0.5	-0.5	0.7	-3.0	-3.0	4.6

1. Average standard error of change in two consecutive months (see "Sampling Errors" in the Data Quality section for further explanations).

2. Also referred to as "Natural resources".

Note: Related CANSIM tables 282-0087 and 282-0088. The sum of individual categories may not always add to the total due to rounding.

Table 4-2
Selected labour force characteristics (seasonally adjusted) — Prince Edward Island

	December 2017	January 2018	S.E. ¹	Change from			Percent change from		
				last month	last December	twelve months ago	last month	last December	twelve months ago
				in thousands (except rates)					
Both sexes, 15 years and over									
Population	124.4	124.5	...	0.1	0.1	1.9	0.1	0.1	1.5
Labour force	82.7	83.8	0.6	1.1	1.1	2.8	1.3	1.3	3.5
Employment	74.8	74.9	0.6	0.1	0.1	2.0	0.1	0.1	2.7
Full-time employment	63.3	62.2	0.8	-1.1	-1.1	0.7	-1.7	-1.7	1.1
Unemployment	8.0	8.9	0.6	0.9	0.9	0.8	11.3	11.3	9.9
Participation rate	66.5	67.3	0.5	0.8	0.8	1.2
Unemployment rate	9.7	10.6	0.7	0.9	0.9	0.6
Employment rate	60.1	60.2	0.5	0.1	0.1	0.7
Both sexes, 15 to 24 years									
Population	17.8	17.8	...	0.0	0.0	0.1	0.0	0.0	0.6
Labour force	11.8	12.2	0.3	0.4	0.4	-0.6	3.4	3.4	-4.7
Employment	10.1	10.4	0.3	0.3	0.3	-0.4	3.0	3.0	-3.7
Unemployment	1.7	1.9	0.3	0.2	0.2	-0.1	11.8	11.8	-5.0
Participation rate	66.3	68.5	1.9	2.2	2.2	-3.8
Unemployment rate	14.4	15.6	2.3	1.2	1.2	0.0
Employment rate	56.7	58.4	1.9	1.7	1.7	-2.6
Men, 25 years and over									
Population	51.2	51.3	...	0.1	0.1	1.0	0.2	0.2	2.0
Labour force	36.5	37.2	0.3	0.7	0.7	2.0	1.9	1.9	5.7
Employment	33.0	33.5	0.4	0.5	0.5	2.2	1.5	1.5	7.0
Unemployment	3.5	3.7	0.4	0.2	0.2	-0.2	5.7	5.7	-5.1
Participation rate	71.3	72.5	0.7	1.2	1.2	2.5
Unemployment rate	9.6	9.9	1.0	0.3	0.3	-1.2
Employment rate	64.5	65.3	0.8	0.8	0.8	3.1
Women, 25 years and over									
Population	55.4	55.4	...	0.0	0.0	0.8	0.0	0.0	1.5
Labour force	34.5	34.4	0.3	-0.1	-0.1	1.5	-0.3	-0.3	4.6
Employment	31.7	31.0	0.4	-0.7	-0.7	0.2	-2.2	-2.2	0.6
Unemployment	2.8	3.3	0.3	0.5	0.5	1.2	17.9	17.9	57.1
Participation rate	62.3	62.1	0.6	-0.2	-0.2	1.8
Unemployment rate	8.1	9.6	0.9	1.5	1.5	3.2
Employment rate	57.2	56.0	0.7	-1.2	-1.2	-0.4
Industry	74.8	74.9	0.6	0.1	0.1	2.0	0.1	0.1	2.7
Goods-producing sector	19.0	19.2	0.5	0.2	0.2	2.3	1.1	1.1	13.6
Agriculture	3.7	3.7	0.3	0.0	0.0	0.5	0.0	0.0	15.6
Forestry, fishing, mining, quarrying, oil and gas extraction ²	2.6	2.7	0.3	0.1	0.1	0.5	3.8	3.8	22.7
Utilities	x	x	0.0	x	x	x	x	x	x
Construction	6.0	6.1	0.2	0.1	0.1	1.1	1.7	1.7	22.0
Manufacturing	6.5	6.5	0.3	0.0	0.0	0.2	0.0	0.0	3.2
Services-producing sector	55.8	55.6	0.6	-0.2	-0.2	-0.3	-0.4	-0.4	-0.5
Wholesale and retail trade	11.1	11.1	0.3	0.0	0.0	0.5	0.0	0.0	4.7
Transportation and warehousing	2.5	2.3	0.2	-0.2	-0.2	-0.6	-8.0	-8.0	-20.7
Finance, insurance, real estate, rental and leasing	2.8	2.8	0.1	0.0	0.0	0.1	0.0	0.0	3.7
Professional, scientific and technical services	3.4	3.6	0.2	0.2	0.2	0.5	5.9	5.9	16.1
Business, building and other support services	1.7	1.5	0.2	-0.2	-0.2	-0.6	-11.8	-11.8	-28.6
Educational services	5.6	5.4	0.2	-0.2	-0.2	-0.1	-3.6	-3.6	-1.8
Health care and social assistance	10.9	10.7	0.2	-0.2	-0.2	0.4	-1.8	-1.8	3.9
Information, culture and recreation	2.6	2.7	0.2	0.1	0.1	-0.1	3.8	3.8	-3.6
Accommodation and food services	5.2	5.4	0.3	0.2	0.2	-0.3	3.8	3.8	-5.3
Other services (except public administration)	3.3	3.3	0.2	0.0	0.0	0.1	0.0	0.0	3.1
Public administration	6.9	6.9	0.2	0.0	0.0	0.0	0.0	0.0	0.0

1. Average standard error of change in two consecutive months (see "Sampling Errors" in the **Data Quality** section for further explanations).

2. Also referred to as "Natural resources".

Note: Related CANSIM tables 282-0087 and 282-0088. The sum of individual categories may not always add to the total due to rounding.

Table 4-3
Selected labour force characteristics (seasonally adjusted) — Nova Scotia

	December 2017	January 2018	S.E. ¹	Change from			Percent change from		
				last month	last December	twelve months ago	last month	last December	twelve months ago
				in thousands (except rates)					
Both sexes, 15 years and over									
Population	795.3	795.8	...	0.5	0.5	5.5	0.1	0.1	0.7
Labour force	493.8	494.0	2.7	0.2	0.2	4.4	0.0	0.0	0.9
Employment	454.2	453.5	2.7	-0.7	-0.7	2.0	-0.2	-0.2	0.4
Full-time employment	369.3	370.6	3.6	1.3	1.3	7.3	0.4	0.4	2.0
Unemployment	39.6	40.5	2.5	0.9	0.9	2.4	2.3	2.3	6.3
Participation rate	62.1	62.1	0.3	0.0	0.0	0.1
Unemployment rate	8.0	8.2	0.5	0.2	0.2	0.4
Employment rate	57.1	57.0	0.3	-0.1	-0.1	-0.1
Both sexes, 15 to 24 years									
Population	108.3	108.2	...	-0.1	-0.1	-0.7	-0.1	-0.1	-0.6
Labour force	68.2	69.7	1.5	1.5	1.5	1.5	2.2	2.2	2.2
Employment	56.6	57.0	1.5	0.4	0.4	-0.5	0.7	0.7	-0.9
Unemployment	11.6	12.7	1.4	1.1	1.1	2.0	9.5	9.5	18.7
Participation rate	63.0	64.4	1.4	1.4	1.4	1.8
Unemployment rate	17.0	18.2	1.9	1.2	1.2	2.5
Employment rate	52.3	52.7	1.4	0.4	0.4	-0.1
Men, 25 years and over									
Population	329.8	330.1	...	0.3	0.3	3.6	0.1	0.1	1.1
Labour force	219.1	218.5	1.6	-0.6	-0.6	4.1	-0.3	-0.3	1.9
Employment	201.8	200.6	1.7	-1.2	-1.2	4.7	-0.6	-0.6	2.4
Unemployment	17.3	18.0	1.6	0.7	0.7	-0.5	4.0	4.0	-2.7
Participation rate	66.4	66.2	0.5	-0.2	-0.2	0.5
Unemployment rate	7.9	8.2	0.7	0.3	0.3	-0.4
Employment rate	61.2	60.8	0.5	-0.4	-0.4	0.8
Women, 25 years and over									
Population	357.2	357.4	...	0.2	0.2	2.6	0.1	0.1	0.7
Labour force	206.4	205.8	1.4	-0.6	-0.6	-1.3	-0.3	-0.3	-0.6
Employment	195.8	195.9	1.4	0.1	0.1	-2.3	0.1	0.1	-1.2
Unemployment	10.6	9.9	1.1	-0.7	-0.7	1.0	-6.6	-6.6	11.2
Participation rate	57.8	57.6	0.4	-0.2	-0.2	-0.8
Unemployment rate	5.1	4.8	0.5	-0.3	-0.3	0.5
Employment rate	54.8	54.8	0.4	0.0	0.0	-1.1
Industry	454.2	453.5	2.7	-0.7	-0.7	2.0	-0.2	-0.2	0.4
Goods-producing sector	83.1	84.0	1.6	0.9	0.9	1.8	1.1	1.1	2.2
Agriculture	5.3	5.1	0.6	-0.2	-0.2	0.4	-3.8	-3.8	8.5
Forestry, fishing, mining, quarrying, oil and gas extraction ²	10.0	10.9	0.8	0.9	0.9	-1.4	9.0	9.0	-11.4
Utilities	3.8	3.9	0.2	0.1	0.1	0.1	2.6	2.6	2.6
Construction	33.1	32.5	1.1	-0.6	-0.6	-1.3	-1.8	-1.8	-3.8
Manufacturing	30.9	31.6	0.9	0.7	0.7	4.0	2.3	2.3	14.5
Services-producing sector	371.1	369.4	2.5	-1.7	-1.7	0.1	-0.5	-0.5	0.0
Wholesale and retail trade	75.0	76.2	1.3	1.2	1.2	0.8	1.6	1.6	1.1
Transportation and warehousing	20.6	19.1	0.8	-1.5	-1.5	-1.0	-7.3	-7.3	-5.0
Finance, insurance, real estate, rental and leasing	23.1	23.8	0.7	0.7	0.7	1.1	3.0	3.0	4.8
Professional, scientific and technical services	28.6	27.2	0.9	-1.4	-1.4	-2.6	-4.9	-4.9	-8.7
Business, building and other support services	18.0	17.7	0.8	-0.3	-0.3	0.2	-1.7	-1.7	1.1
Educational services	37.8	37.7	1.0	-0.1	-0.1	3.6	-0.3	-0.3	10.6
Health care and social assistance	69.1	69.5	1.1	0.4	0.4	-6.7	0.6	0.6	-8.8
Information, culture and recreation	18.1	17.3	0.8	-0.8	-0.8	1.5	-4.4	-4.4	9.5
Accommodation and food services	32.2	32.5	1.1	0.3	0.3	3.2	0.9	0.9	10.9
Other services (except public administration)	18.7	18.3	0.8	-0.4	-0.4	-1.2	-2.1	-2.1	-6.2
Public administration	30.0	30.2	0.7	0.2	0.2	1.3	0.7	0.7	4.5

1. Average standard error of change in two consecutive months (see "Sampling Errors" in the **Data Quality** section for further explanations).

2. Also referred to as "Natural resources".

Note: Related CANSIM tables 282-0087 and 282-0088. The sum of individual categories may not always add to the total due to rounding.

Table 4-4
Selected labour force characteristics (seasonally adjusted) — New Brunswick

	December 2017	January 2018	S.E. ¹	Change from			Percent change from		
				last month	last December	twelve months ago	last month	last December	twelve months ago
				in thousands (except rates)					
Both sexes, 15 years and over									
Population	625.7	626.0	...	0.3	0.3	2.0	0.0	0.0	0.3
Labour force	386.6	385.6	2.2	-1.0	-1.0	0.4	-0.3	-0.3	0.1
Employment	356.5	350.7	2.2	-5.8	-5.8	-0.5	-1.6	-1.6	-0.1
Full-time employment	304.9	301.3	2.8	-3.6	-3.6	1.6	-1.2	-1.2	0.5
Unemployment	30.1	34.9	1.9	4.8	4.8	0.8	15.9	15.9	2.3
Participation rate	61.8	61.6	0.3	-0.2	-0.2	-0.1
Unemployment rate	7.8	9.1	0.5	1.3	1.3	0.2
Employment rate	57.0	56.0	0.4	-1.0	-1.0	-0.3
Both sexes, 15 to 24 years									
Population	81.4	81.3	...	-0.1	-0.1	-1.0	-0.1	-0.1	-1.2
Labour force	52.4	53.5	1.2	1.1	1.1	0.7	2.1	2.1	1.3
Employment	46.0	44.3	1.1	-1.7	-1.7	-0.3	-3.7	-3.7	-0.7
Unemployment	6.4	9.3	1.0	2.9	2.9	1.1	45.3	45.3	13.4
Participation rate	64.4	65.8	1.4	1.4	1.4	1.6
Unemployment rate	12.2	17.4	1.8	5.2	5.2	1.9
Employment rate	56.5	54.5	1.4	-2.0	-2.0	0.3
Men, 25 years and over									
Population	263.4	263.6	...	0.2	0.2	1.4	0.1	0.1	0.5
Labour force	172.5	170.7	1.3	-1.8	-1.8	-1.7	-1.0	-1.0	-1.0
Employment	158.4	155.4	1.4	-3.0	-3.0	-0.1	-1.9	-1.9	-0.1
Unemployment	14.2	15.4	1.2	1.2	1.2	-1.5	8.5	8.5	-8.9
Participation rate	65.5	64.8	0.5	-0.7	-0.7	-1.0
Unemployment rate	8.2	9.0	0.7	0.8	0.8	-0.8
Employment rate	60.1	59.0	0.5	-1.1	-1.1	-0.3
Women, 25 years and over									
Population	280.9	281.0	...	0.1	0.1	1.5	0.0	0.0	0.5
Labour force	161.6	161.4	1.2	-0.2	-0.2	1.3	-0.1	-0.1	0.8
Employment	152.1	151.1	1.2	-1.0	-1.0	0.1	-0.7	-0.7	0.1
Unemployment	9.6	10.3	1.0	0.7	0.7	1.2	7.3	7.3	13.2
Participation rate	57.5	57.4	0.4	-0.1	-0.1	0.1
Unemployment rate	5.9	6.4	0.6	0.5	0.5	0.7
Employment rate	54.1	53.8	0.4	-0.3	-0.3	-0.2
Industry	356.5	350.7	2.2	-5.8	-5.8	-0.5	-1.6	-1.6	-0.1
Goods-producing sector	74.6	72.6	1.4	-2.0	-2.0	0.0	-2.7	-2.7	0.0
Agriculture	4.6	5.1	0.5	0.5	0.5	-0.3	10.9	10.9	-5.6
Forestry, fishing, mining, quarrying, oil and gas extraction ²	8.3	8.2	0.6	-0.1	-0.1	-1.2	-1.2	-1.2	-12.8
Utilities	2.9	2.9	0.2	0.0	0.0	-1.2	0.0	0.0	-29.3
Construction	25.4	24.6	0.9	-0.8	-0.8	0.5	-3.1	-3.1	2.1
Manufacturing	33.3	31.8	0.8	-1.5	-1.5	2.3	-4.5	-4.5	7.8
Services-producing sector	281.9	278.1	2.0	-3.8	-3.8	-0.5	-1.3	-1.3	-0.2
Wholesale and retail trade	57.1	55.2	1.0	-1.9	-1.9	-1.5	-3.3	-3.3	-2.6
Transportation and warehousing	18.6	17.3	0.6	-1.3	-1.3	0.1	-7.0	-7.0	0.6
Finance, insurance, real estate, rental and leasing	16.1	15.8	0.5	-0.3	-0.3	-1.7	-1.9	-1.9	-9.7
Professional, scientific and technical services	14.6	14.8	0.6	0.2	0.2	-0.3	1.4	1.4	-2.0
Business, building and other support services	17.3	16.1	0.7	-1.2	-1.2	1.0	-6.9	-6.9	6.6
Educational services	26.0	25.9	0.7	-0.1	-0.1	0.2	-0.4	-0.4	0.8
Health care and social assistance	60.0	61.3	0.9	1.3	1.3	6.4	2.2	2.2	11.7
Information, culture and recreation	10.7	10.3	0.7	-0.4	-0.4	-2.2	-3.7	-3.7	-17.6
Accommodation and food services	25.0	23.9	0.8	-1.1	-1.1	0.9	-4.4	-4.4	3.9
Other services (except public administration)	14.9	14.6	0.6	-0.3	-0.3	-2.1	-2.0	-2.0	-12.6
Public administration	21.8	22.9	0.6	1.1	1.1	-1.2	5.0	5.0	-5.0

1. Average standard error of change in two consecutive months (see "Sampling Errors" in the **Data Quality** section for further explanations).

2. Also referred to as "Natural resources".

Note: Related CANSIM tables 282-0087 and 282-0088. The sum of individual categories may not always add to the total due to rounding.

Table 4-5
Selected labour force characteristics (seasonally adjusted) — Quebec

	December 2017	January 2018	S.E. ¹	Change from			Percent change from		
				last month	last December	twelve months ago	last month	last December	twelve months ago
				in thousands (except rates)					
Both sexes, 15 years and over									
Population	6,953.5	6,958.2	...	4.7	4.7	48.5	0.1	0.1	0.7
Labour force	4,510.1	4,508.6	15.2	-1.5	-1.5	30.8	0.0	0.0	0.7
Employment	4,283.9	4,266.5	15.5	-17.4	-17.4	70.5	-0.4	-0.4	1.7
Full-time employment	3,475.9	3,489.6	20.6	13.7	13.7	113.5	0.4	0.4	3.4
Unemployment	226.1	242.1	12.9	16.0	16.0	-39.8	7.1	7.1	-14.1
Participation rate	64.9	64.8	0.2	-0.1	-0.1	0.0
Unemployment rate	5.0	5.4	0.3	0.4	0.4	-0.9
Employment rate	61.6	61.3	0.2	-0.3	-0.3	0.6
Both sexes, 15 to 24 years									
Population	907.6	906.1	...	-1.5	-1.5	-17.4	-0.2	-0.2	-1.9
Labour force	600.0	611.5	8.4	11.5	11.5	-7.2	1.9	1.9	-1.2
Employment	552.4	555.5	8.3	3.1	3.1	2.6	0.6	0.6	0.5
Unemployment	47.6	56.0	6.8	8.4	8.4	-9.8	17.6	17.6	-14.9
Participation rate	66.1	67.5	0.9	1.4	1.4	0.5
Unemployment rate	7.9	9.2	1.1	1.3	1.3	-1.4
Employment rate	60.9	61.3	0.9	0.4	0.4	1.4
Men, 25 years and over									
Population	2,982.8	2,986.1	...	3.3	3.3	33.6	0.1	0.1	1.1
Labour force	2,073.3	2,069.1	8.2	-4.2	-4.2	28.4	-0.2	-0.2	1.4
Employment	1,978.0	1,966.0	9.0	-12.0	-12.0	48.2	-0.6	-0.6	2.5
Unemployment	95.4	103.0	7.8	7.6	7.6	-19.9	8.0	8.0	-16.2
Participation rate	69.5	69.3	0.3	-0.2	-0.2	0.2
Unemployment rate	4.6	5.0	0.4	0.4	0.4	-1.0
Employment rate	66.3	65.8	0.3	-0.5	-0.5	0.8
Women, 25 years and over									
Population	3,063.0	3,066.0	...	3.0	3.0	32.4	0.1	0.1	1.1
Labour force	1,836.8	1,828.1	8.7	-8.7	-8.7	9.7	-0.5	-0.5	0.5
Employment	1,753.6	1,745.0	8.4	-8.6	-8.6	19.7	-0.5	-0.5	1.1
Unemployment	83.2	83.1	7.2	-0.1	-0.1	-10.0	-0.1	-0.1	-10.7
Participation rate	60.0	59.6	0.3	-0.4	-0.4	-0.3
Unemployment rate	4.5	4.5	0.4	0.0	0.0	-0.6
Employment rate	57.3	56.9	0.3	-0.4	-0.4	0.0
Industry	4,283.9	4,266.5	15.5	-17.4	-17.4	70.5	-0.4	-0.4	1.7
Goods-producing sector	879.2	860.3	8.9	-18.9	-18.9	20.7	-2.1	-2.1	2.5
Agriculture	55.2	58.0	3.0	2.8	2.8	1.1	5.1	5.1	1.9
Forestry, fishing, mining, quarrying, oil and gas extraction ²	38.1	35.0	2.2	-3.1	-3.1	0.2	-8.1	-8.1	0.6
Utilities	22.9	22.4	1.0	-0.5	-0.5	-3.3	-2.2	-2.2	-12.8
Construction	255.1	243.7	5.5	-11.4	-11.4	5.3	-4.5	-4.5	2.2
Manufacturing	507.9	501.3	6.3	-6.6	-6.6	17.6	-1.3	-1.3	3.6
Services-producing sector	3,404.8	3,406.2	14.7	1.4	1.4	49.8	0.0	0.0	1.5
Wholesale and retail trade	655.4	668.9	8.1	13.5	13.5	-4.6	2.1	2.1	-0.7
Transportation and warehousing	219.5	220.7	4.1	1.2	1.2	23.6	0.5	0.5	12.0
Finance, insurance, real estate, rental and leasing	246.5	235.8	4.2	-10.7	-10.7	6.6	-4.3	-4.3	2.9
Professional, scientific and technical services	331.0	333.3	5.7	2.3	2.3	19.0	0.7	0.7	6.0
Business, building and other support services	191.1	192.8	5.6	1.7	1.7	9.8	0.9	0.9	5.4
Educational services	299.0	293.7	5.4	-5.3	-5.3	-0.4	-1.8	-1.8	-0.1
Health care and social assistance	583.1	580.2	5.8	-2.9	-2.9	6.6	-0.5	-0.5	1.2
Information, culture and recreation	180.5	188.0	5.8	7.5	7.5	2.4	4.2	4.2	1.3
Accommodation and food services	275.7	266.9	5.8	-8.8	-8.8	-9.0	-3.2	-3.2	-3.3
Other services (except public administration)	178.8	178.1	4.0	-0.7	-0.7	0.5	-0.4	-0.4	0.3
Public administration	244.1	247.7	4.0	3.6	3.6	-4.8	1.5	1.5	-1.9

1. Average standard error of change in two consecutive months (see "Sampling Errors" in the **Data Quality** section for further explanations).

2. Also referred to as "Natural resources".

Note: Related CANSIM tables 282-0087 and 282-0088. The sum of individual categories may not always add to the total due to rounding.

Table 4-6
Selected labour force characteristics (seasonally adjusted) — Ontario

	December 2017	January 2018	S.E. ¹	Change from			Percent change from		
				last month	last December	twelve months ago	last month	last December	twelve months ago
				in thousands (except rates)					
Both sexes, 15 years and over									
Population	11,771.9	11,793.7	...	21.8	21.8	189.4	0.2	0.2	1.6
Labour force	7,648.3	7,593.5	20.1	-54.8	-54.8	42.7	-0.7	-0.7	0.6
Employment	7,223.8	7,172.9	19.6	-50.9	-50.9	104.3	-0.7	-0.7	1.5
Full-time employment	5,851.4	5,859.9	27.5	8.5	8.5	150.5	0.1	0.1	2.6
Unemployment	424.5	420.6	16.8	-3.9	-3.9	-61.6	-0.9	-0.9	-12.8
Participation rate	65.0	64.4	0.2	-0.6	-0.6	-0.7
Unemployment rate	5.6	5.5	0.2	-0.1	-0.1	-0.9
Employment rate	61.4	60.8	0.2	-0.6	-0.6	-0.1
Both sexes, 15 to 24 years									
Population	1,789.7	1,792.0	...	2.3	2.3	10.0	0.1	0.1	0.6
Labour force	1,103.7	1,078.9	12.6	-24.8	-24.8	-10.5	-2.2	-2.2	-1.0
Employment	981.3	955.5	11.5	-25.8	-25.8	31.5	-2.6	-2.6	3.4
Unemployment	122.4	123.5	10.0	1.1	1.1	-41.9	0.9	0.9	-25.3
Participation rate	61.7	60.2	0.7	-1.5	-1.5	-0.9
Unemployment rate	11.1	11.4	0.9	0.3	0.3	-3.8
Employment rate	54.8	53.3	0.6	-1.5	-1.5	1.4
Men, 25 years and over									
Population	4,822.2	4,831.8	...	9.6	9.6	91.1	0.2	0.2	1.9
Labour force	3,394.2	3,382.3	10.2	-11.9	-11.9	-1.1	-0.4	-0.4	0.0
Employment	3,232.1	3,232.2	10.6	0.1	0.1	10.5	0.0	0.0	0.3
Unemployment	162.1	150.1	9.2	-12.0	-12.0	-11.7	-7.4	-7.4	-7.2
Participation rate	70.4	70.0	0.2	-0.4	-0.4	-1.4
Unemployment rate	4.8	4.4	0.3	-0.4	-0.4	-0.4
Employment rate	67.0	66.9	0.2	-0.1	-0.1	-1.1
Women, 25 years and over									
Population	5,160.0	5,170.0	...	10.0	10.0	88.4	0.2	0.2	1.7
Labour force	3,150.4	3,132.3	11.5	-18.1	-18.1	54.3	-0.6	-0.6	1.8
Employment	3,010.3	2,985.3	11.3	-25.0	-25.0	62.3	-0.8	-0.8	2.1
Unemployment	140.0	147.0	9.4	7.0	7.0	-8.0	5.0	5.0	-5.2
Participation rate	61.1	60.6	0.2	-0.5	-0.5	0.0
Unemployment rate	4.4	4.7	0.3	0.3	0.3	-0.3
Employment rate	58.3	57.7	0.2	-0.6	-0.6	0.2
Industry	7,223.8	7,172.9	19.6	-50.9	-50.9	104.3	-0.7	-0.7	1.5
Goods-producing sector	1,464.1	1,457.3	10.3	-6.8	-6.8	23.2	-0.5	-0.5	1.6
Agriculture	67.6	63.7	2.7	-3.9	-3.9	-9.1	-5.8	-5.8	-12.5
Forestry, fishing, mining, quarrying, oil and gas extraction ²	34.0	32.7	1.6	-1.3	-1.3	-0.8	-3.8	-3.8	-2.4
Utilities	47.2	49.4	1.5	2.2	2.2	-1.5	4.7	4.7	-2.9
Construction	527.6	519.1	7.0	-8.5	-8.5	0.7	-1.6	-1.6	0.1
Manufacturing	787.8	792.4	7.3	4.6	4.6	34.0	0.6	0.6	4.5
Services-producing sector	5,759.7	5,715.7	19.0	-44.0	-44.0	81.3	-0.8	-0.8	1.4
Wholesale and retail trade	1,103.2	1,087.7	9.9	-15.5	-15.5	64.1	-1.4	-1.4	6.3
Transportation and warehousing	354.1	348.2	5.5	-5.9	-5.9	20.8	-1.7	-1.7	6.4
Finance, insurance, real estate, rental and leasing	562.1	562.7	6.5	0.6	0.6	-6.8	0.1	0.1	-1.2
Professional, scientific and technical services	639.1	625.8	7.5	-13.3	-13.3	24.6	-2.1	-2.1	4.1
Business, building and other support services	306.0	313.3	6.9	7.3	7.3	-12.6	2.4	2.4	-3.9
Educational services	508.8	500.7	7.3	-8.1	-8.1	1.7	-1.6	-1.6	0.3
Health care and social assistance	853.6	843.9	7.0	-9.7	-9.7	-18.0	-1.1	-1.1	-2.1
Information, culture and recreation	324.5	325.4	6.8	0.9	0.9	11.1	0.3	0.3	3.5
Accommodation and food services	461.6	463.8	8.1	2.2	2.2	1.1	0.5	0.5	0.2
Other services (except public administration)	282.0	284.9	5.3	2.9	2.9	5.9	1.0	1.0	2.1
Public administration	364.8	359.2	4.6	-5.6	-5.6	-10.8	-1.5	-1.5	-2.9

1. Average standard error of change in two consecutive months (see "Sampling Errors" in the **Data Quality** section for further explanations).

2. Also referred to as "Natural resources".

Note: Related CANSIM tables 282-0087 and 282-0088. The sum of individual categories may not always add to the total due to rounding.

Table 4-7
Selected labour force characteristics (seasonally adjusted) — Manitoba

	December 2017	January 2018	S.E. ¹	Change from			Percent change from		
				last month	last December	twelve months ago	last month	last December	twelve months ago
				in thousands (except rates)					
Both sexes, 15 years and over									
Population	1,018.9	1,019.5	...	0.6	0.6	13.4	0.1	0.1	1.3
Labour force	684.5	680.4	2.6	-4.1	-4.1	5.0	-0.6	-0.6	0.7
Employment	646.3	642.7	2.6	-3.6	-3.6	7.1	-0.6	-0.6	1.1
Full-time employment	520.0	512.3	3.6	-7.7	-7.7	-2.7	-1.5	-1.5	-0.5
Unemployment	38.2	37.8	2.1	-0.4	-0.4	-2.0	-1.0	-1.0	-5.0
Participation rate	67.2	66.7	0.3	-0.5	-0.5	-0.4
Unemployment rate	5.6	5.6	0.3	0.0	0.0	-0.3
Employment rate	63.4	63.0	0.3	-0.4	-0.4	-0.2
Both sexes, 15 to 24 years									
Population	165.5	165.4	...	-0.1	-0.1	1.7	-0.1	-0.1	1.0
Labour force	109.8	108.5	1.5	-1.3	-1.3	0.4	-1.2	-1.2	0.4
Employment	97.2	95.8	1.4	-1.4	-1.4	1.6	-1.4	-1.4	1.7
Unemployment	12.6	12.7	1.3	0.1	0.1	-1.2	0.8	0.8	-8.6
Participation rate	66.3	65.6	0.9	-0.7	-0.7	-0.4
Unemployment rate	11.5	11.7	1.1	0.2	0.2	-1.2
Employment rate	58.7	57.9	0.9	-0.8	-0.8	0.4
Men, 25 years and over									
Population	418.7	419.0	...	0.3	0.3	6.0	0.1	0.1	1.5
Labour force	304.4	305.3	1.3	0.9	0.9	2.6	0.3	0.3	0.9
Employment	290.2	290.7	1.4	0.5	0.5	3.4	0.2	0.2	1.2
Unemployment	14.2	14.6	1.2	0.4	0.4	-0.8	2.8	2.8	-5.2
Participation rate	72.7	72.9	0.3	0.2	0.2	-0.4
Unemployment rate	4.7	4.8	0.4	0.1	0.1	-0.3
Employment rate	69.3	69.4	0.3	0.1	0.1	-0.2
Women, 25 years and over									
Population	434.7	435.1	...	0.4	0.4	5.7	0.1	0.1	1.3
Labour force	270.2	266.6	1.5	-3.6	-3.6	2.0	-1.3	-1.3	0.8
Employment	258.8	256.1	1.5	-2.7	-2.7	2.0	-1.0	-1.0	0.8
Unemployment	11.4	10.5	1.1	-0.9	-0.9	0.0	-7.9	-7.9	0.0
Participation rate	62.2	61.3	0.3	-0.9	-0.9	-0.3
Unemployment rate	4.2	3.9	0.4	-0.3	-0.3	-0.1
Employment rate	59.5	58.9	0.3	-0.6	-0.6	-0.3
Industry	646.3	642.7	2.6	-3.6	-3.6	7.1	-0.6	-0.6	1.1
Goods-producing sector	149.5	150.5	1.6	1.0	1.0	-0.3	0.7	0.7	-0.2
Agriculture	25.9	25.7	0.8	-0.2	-0.2	1.7	-0.8	-0.8	7.1
Forestry, fishing, mining, quarrying, oil and gas extraction ²	6.2	6.5	0.4	0.3	0.3	-0.8	4.8	4.8	-11.0
Utilities	8.2	8.1	0.2	-0.1	-0.1	-1.6	-1.2	-1.2	-16.5
Construction	46.6	49.1	1.0	2.5	2.5	3.3	5.4	5.4	7.2
Manufacturing	62.6	61.1	0.9	-1.5	-1.5	-2.8	-2.4	-2.4	-4.4
Services-producing sector	496.8	492.2	2.4	-4.6	-4.6	7.4	-0.9	-0.9	1.5
Wholesale and retail trade	91.3	89.4	1.2	-1.9	-1.9	0.0	-2.1	-2.1	0.0
Transportation and warehousing	35.8	37.5	0.8	1.7	1.7	0.6	4.7	4.7	1.6
Finance, insurance, real estate, rental and leasing	36.7	36.4	0.7	-0.3	-0.3	-0.2	-0.8	-0.8	-0.5
Professional, scientific and technical services	28.9	28.5	0.6	-0.4	-0.4	0.2	-1.4	-1.4	0.7
Business, building and other support services	20.3	20.4	0.7	0.1	0.1	2.3	0.5	0.5	12.7
Educational services	51.1	51.0	1.0	-0.1	-0.1	1.4	-0.2	-0.2	2.8
Health care and social assistance	105.2	102.0	1.1	-3.2	-3.2	-0.4	-3.0	-3.0	-0.4
Information, culture and recreation	22.7	22.7	0.9	0.0	0.0	-0.7	0.0	0.0	-3.0
Accommodation and food services	44.6	43.8	1.0	-0.8	-0.8	4.3	-1.8	-1.8	10.9
Other services (except public administration)	29.3	29.2	0.7	-0.1	-0.1	2.0	-0.3	-0.3	7.4
Public administration	30.8	31.2	0.7	0.4	0.4	-2.3	1.3	1.3	-6.9

1. Average standard error of change in two consecutive months (see "Sampling Errors" in the **Data Quality** section for further explanations).

2. Also referred to as "Natural resources".

Note: Related CANSIM tables 282-0087 and 282-0088. The sum of individual categories may not always add to the total due to rounding.

Table 4-8
Selected labour force characteristics (seasonally adjusted) — Saskatchewan

	December 2017	January 2018	S.E. ¹	Change from			Percent change from		
				last month	last December	twelve months ago	last month	last December	twelve months ago
				in thousands (except rates)			percent		
Both sexes, 15 years and over									
Population	879.9	880.9	...	1.0	1.0	8.2	0.1	0.1	0.9
Labour force	608.1	602.3	2.5	-5.8	-5.8	-4.8	-1.0	-1.0	-0.8
Employment	568.3	569.4	2.5	1.1	1.1	0.7	0.2	0.2	0.1
Full-time employment	462.3	468.5	3.4	6.2	6.2	3.9	1.3	1.3	0.8
Unemployment	39.8	32.8	2.1	-7.0	-7.0	-5.6	-17.6	-17.6	-14.6
Participation rate	69.1	68.4	0.3	-0.7	-0.7	-1.2
Unemployment rate	6.5	5.4	0.3	-1.1	-1.1	-0.9
Employment rate	64.6	64.6	0.3	0.0	0.0	-0.6
Both sexes, 15 to 24 years									
Population	133.3	133.1	...	-0.2	-0.2	-0.9	-0.2	-0.2	-0.7
Labour force	87.6	83.1	1.4	-4.5	-4.5	-6.0	-5.1	-5.1	-6.7
Employment	74.3	73.9	1.3	-0.4	-0.4	-5.2	-0.5	-0.5	-6.6
Unemployment	13.3	9.2	1.2	-4.1	-4.1	-0.8	-30.8	-30.8	-8.0
Participation rate	65.7	62.4	1.0	-3.3	-3.3	-4.1
Unemployment rate	15.2	11.1	1.3	-4.1	-4.1	-0.1
Employment rate	55.7	55.5	1.0	-0.2	-0.2	-3.5
Men, 25 years and over									
Population	373.7	374.3	...	0.6	0.6	4.5	0.2	0.2	1.2
Labour force	283.5	283.7	1.3	0.2	0.2	-0.3	0.1	0.1	-0.1
Employment	266.9	268.4	1.5	1.5	1.5	1.3	0.6	0.6	0.5
Unemployment	16.6	15.2	1.3	-1.4	-1.4	-1.7	-8.4	-8.4	-10.1
Participation rate	75.9	75.8	0.4	-0.1	-0.1	-1.0
Unemployment rate	5.9	5.4	0.4	-0.5	-0.5	-0.6
Employment rate	71.4	71.7	0.4	0.3	0.3	-0.5
Women, 25 years and over									
Population	373.0	373.5	...	0.5	0.5	4.7	0.1	0.1	1.3
Labour force	237.0	235.5	1.5	-1.5	-1.5	1.5	-0.6	-0.6	0.6
Employment	227.1	227.0	1.4	-0.1	-0.1	4.5	0.0	0.0	2.0
Unemployment	9.9	8.5	1.1	-1.4	-1.4	-3.0	-14.1	-14.1	-26.1
Participation rate	63.5	63.1	0.4	-0.4	-0.4	-0.3
Unemployment rate	4.2	3.6	0.4	-0.6	-0.6	-1.3
Employment rate	60.9	60.8	0.4	-0.1	-0.1	0.5
Industry									
Goods-producing sector	568.3	569.4	2.5	1.1	1.1	0.7	0.2	0.2	0.1
Agriculture	144.7	143.7	1.7	-1.0	-1.0	-4.1	-0.7	-0.7	-2.8
Forestry, fishing, mining, quarrying, oil and gas extraction ²	35.8	35.4	1.0	-0.4	-0.4	-3.8	-1.1	-1.1	-9.7
Utilities	24.1	24.7	0.7	0.6	0.6	0.9	2.5	2.5	3.8
Construction	7.0	6.8	0.3	-0.2	-0.2	0.0	-2.9	-2.9	0.0
Manufacturing	50.0	49.5	1.1	-0.5	-0.5	-1.0	-1.0	-1.0	-2.0
Services-producing sector	27.9	27.4	0.7	-0.5	-0.5	-0.2	-1.8	-1.8	-0.7
Wholesale and retail trade	423.6	425.7	2.3	2.1	2.1	4.9	0.5	0.5	1.2
Transportation and warehousing	90.4	91.4	1.3	1.0	1.0	-0.9	1.1	1.1	-1.0
Finance, insurance, real estate, rental and leasing	29.0	30.0	0.8	1.0	1.0	1.0	3.4	3.4	3.4
Professional, scientific and technical services	26.9	27.2	0.6	0.3	0.3	0.4	1.1	1.1	1.5
Business, building and other support services	28.0	27.8	0.8	-0.2	-0.2	-3.9	-0.7	-0.7	-12.3
Educational services	14.2	14.8	0.6	0.6	0.6	1.7	4.2	4.2	13.0
Health care and social assistance	41.9	41.5	1.0	-0.4	-0.4	0.2	-1.0	-1.0	0.5
Information, culture and recreation	78.1	76.8	1.0	-1.3	-1.3	0.7	-1.7	-1.7	0.9
Accommodation and food services	21.0	21.2	0.8	0.2	0.2	0.1	1.0	1.0	0.5
Other services (except public administration)	37.0	37.8	0.9	0.8	0.8	2.1	2.2	2.2	5.9
Public administration	25.6	25.9	0.7	0.3	0.3	1.4	1.2	1.2	5.7
	31.4	31.4	0.6	0.0	0.0	2.0	0.0	0.0	6.8

1. Average standard error of change in two consecutive months (see "Sampling Errors" in the **Data Quality** section for further explanations).

2. Also referred to as "Natural resources".

Note: Related CANSIM tables 282-0087 and 282-0088. The sum of individual categories may not always add to the total due to rounding.

Table 4-9
Selected labour force characteristics (seasonally adjusted) — Alberta

	December 2017	January 2018	S.E. ¹	Change from			Percent change from		
				last month	last December	twelve months ago	last month	last December	twelve months ago
				in thousands (except rates)					
Both sexes, 15 years and over									
Population	3,443.7	3,447.3	...	3.6	3.6	35.9	0.1	0.1	1.1
Labour force	2,494.2	2,489.2	9.8	-5.0	-5.0	3.2	-0.2	-0.2	0.1
Employment	2,320.4	2,314.5	10.1	-5.9	-5.9	45.9	-0.3	-0.3	2.0
Full-time employment	1,889.8	1,917.3	13.9	27.5	27.5	88.8	1.5	1.5	4.9
Unemployment	173.8	174.8	9.0	1.0	1.0	-42.6	0.6	0.6	-19.6
Participation rate	72.4	72.2	0.3	-0.2	-0.2	-0.7
Unemployment rate	7.0	7.0	0.4	0.0	0.0	-1.7
Employment rate	67.4	67.1	0.3	-0.3	-0.3	0.6
Both sexes, 15 to 24 years									
Population	507.6	506.9	...	-0.7	-0.7	-4.9	-0.1	-0.1	-1.0
Labour force	328.7	332.4	5.4	3.7	3.7	-20.1	1.1	1.1	-5.7
Employment	285.4	289.7	5.3	4.3	4.3	-15.1	1.5	1.5	-5.0
Unemployment	43.4	42.7	4.6	-0.7	-0.7	-4.9	-1.6	-1.6	-10.3
Participation rate	64.8	65.6	1.1	0.8	0.8	-3.3
Unemployment rate	13.2	12.8	1.3	-0.4	-0.4	-0.7
Employment rate	56.2	57.2	1.0	1.0	1.0	-2.4
Men, 25 years and over									
Population	1,479.1	1,480.6	...	1.5	1.5	16.5	0.1	0.1	1.1
Labour force	1,188.7	1,191.6	5.3	2.9	2.9	12.6	0.2	0.2	1.1
Employment	1,118.1	1,117.3	5.9	-0.8	-0.8	40.7	-0.1	-0.1	3.8
Unemployment	70.6	74.3	5.5	3.7	3.7	-28.1	5.2	5.2	-27.4
Participation rate	80.4	80.5	0.4	0.1	0.1	0.0
Unemployment rate	5.9	6.2	0.5	0.3	0.3	-2.5
Employment rate	75.6	75.5	0.4	-0.1	-0.1	2.0
Women, 25 years and over									
Population	1,456.9	1,459.8	...	2.9	2.9	24.2	0.2	0.2	1.7
Labour force	976.8	965.3	5.6	-11.5	-11.5	10.8	-1.2	-1.2	1.1
Employment	916.9	907.4	5.7	-9.5	-9.5	20.2	-1.0	-1.0	2.3
Unemployment	59.9	57.8	4.9	-2.1	-2.1	-9.6	-3.5	-3.5	-14.2
Participation rate	67.0	66.1	0.4	-0.9	-0.9	-0.4
Unemployment rate	6.1	6.0	0.5	-0.1	-0.1	-1.1
Employment rate	62.9	62.2	0.4	-0.7	-0.7	0.4
Industry	2,320.4	2,314.5	10.1	-5.9	-5.9	45.9	-0.3	-0.3	2.0
Goods-producing sector	595.7	592.8	6.3	-2.9	-2.9	33.8	-0.5	-0.5	6.0
Agriculture	51.4	50.6	2.1	-0.8	-0.8	-0.7	-1.6	-1.6	-1.4
Forestry, fishing, mining, quarrying, oil and gas extraction ²	152.2	152.2	3.1	0.0	0.0	12.5	0.0	0.0	8.9
Utilities	19.9	21.1	1.0	1.2	1.2	1.1	6.0	6.0	5.5
Construction	245.9	239.7	4.7	-6.2	-6.2	-1.8	-2.5	-2.5	-0.7
Manufacturing	126.3	129.2	2.9	2.9	2.9	22.8	2.3	2.3	21.4
Services-producing sector	1,724.7	1,721.7	9.6	-3.0	-3.0	12.2	-0.2	-0.2	0.7
Wholesale and retail trade	343.0	335.1	5.0	-7.9	-7.9	3.4	-2.3	-2.3	1.0
Transportation and warehousing	143.6	145.2	3.3	1.6	1.6	7.1	1.1	1.1	5.1
Finance, insurance, real estate, rental and leasing	113.2	109.7	2.7	-3.5	-3.5	8.0	-3.1	-3.1	7.9
Professional, scientific and technical services	176.8	179.0	3.8	2.2	2.2	-4.5	1.2	1.2	-2.5
Business, building and other support services	80.6	84.7	2.9	4.1	4.1	4.5	5.1	5.1	5.6
Educational services	156.7	154.4	3.7	-2.3	-2.3	-0.9	-1.5	-1.5	-0.6
Health care and social assistance	266.2	268.9	3.8	2.7	2.7	-9.1	1.0	1.0	-3.3
Information, culture and recreation	74.4	75.3	2.9	0.9	0.9	2.8	1.2	1.2	3.9
Accommodation and food services	148.3	150.3	3.7	2.0	2.0	5.7	1.3	1.3	3.9
Other services (except public administration)	114.8	115.0	3.4	0.2	0.2	-7.5	0.2	0.2	-6.1
Public administration	107.1	104.0	2.3	-3.1	-3.1	2.6	-2.9	-2.9	2.6

1. Average standard error of change in two consecutive months (see "Sampling Errors" in the **Data Quality** section for further explanations).

2. Also referred to as "Natural resources".

Note: Related CANSIM tables 282-0087 and 282-0088. The sum of individual categories may not always add to the total due to rounding.

Table 4-10

Selected labour force characteristics (seasonally adjusted) — British Columbia

	December 2017	January 2018	S.E. ¹	Change from			Percent change from		
				last month	last December	twelve months ago	last month	last December	twelve months ago
				in thousands (except rates)					
Both sexes, 15 years and over									
Population	4,000.7	4,003.7	...	3.0	3.0	48.0	0.1	0.1	1.2
Labour force	2,612.0	2,610.9	10.4	-1.1	-1.1	42.0	0.0	0.0	1.6
Employment	2,491.9	2,486.8	10.4	-5.1	-5.1	59.5	-0.2	-0.2	2.5
Full-time employment	1,946.7	1,950.8	15.7	4.1	4.1	50.0	0.2	0.2	2.6
Unemployment	120.2	124.1	8.2	3.9	3.9	-17.5	3.2	3.2	-12.4
Participation rate	65.3	65.2	0.3	-0.1	-0.1	0.3
Unemployment rate	4.6	4.8	0.3	0.2	0.2	-0.7
Employment rate	62.3	62.1	0.3	-0.2	-0.2	0.7
Both sexes, 15 to 24 years									
Population	580.6	580.6	...	0.0	0.0	-1.5	0.0	0.0	-0.3
Labour force	381.7	382.0	5.9	0.3	0.3	-2.2	0.1	0.1	-0.6
Employment	355.1	355.1	6.0	0.0	0.0	8.4	0.0	0.0	2.4
Unemployment	26.7	26.9	4.9	0.2	0.2	-10.6	0.7	0.7	-28.3
Participation rate	65.7	65.8	1.0	0.1	0.1	-0.2
Unemployment rate	7.0	7.0	1.2	0.0	0.0	-2.8
Employment rate	61.2	61.2	1.0	0.0	0.0	1.6
Men, 25 years and over									
Population	1,668.6	1,670.1	...	1.5	1.5	24.6	0.1	0.1	1.5
Labour force	1,167.8	1,168.6	5.7	0.8	0.8	30.0	0.1	0.1	2.6
Employment	1,116.1	1,115.8	6.0	-0.3	-0.3	31.7	0.0	0.0	2.9
Unemployment	51.7	52.8	4.7	1.1	1.1	-1.7	2.1	2.1	-3.1
Participation rate	70.0	70.0	0.3	0.0	0.0	0.8
Unemployment rate	4.4	4.5	0.4	0.1	0.1	-0.3
Employment rate	66.9	66.8	0.4	-0.1	-0.1	0.9
Women, 25 years and over									
Population	1,751.4	1,753.0	...	1.6	1.6	24.9	0.1	0.1	1.4
Labour force	1,062.5	1,060.3	5.9	-2.2	-2.2	14.2	-0.2	-0.2	1.4
Employment	1,020.8	1,015.8	5.7	-5.0	-5.0	19.3	-0.5	-0.5	1.9
Unemployment	41.8	44.4	4.6	2.6	2.6	-5.2	6.2	6.2	-10.5
Participation rate	60.7	60.5	0.3	-0.2	-0.2	0.0
Unemployment rate	3.9	4.2	0.4	0.3	0.3	-0.5
Employment rate	58.3	57.9	0.3	-0.4	-0.4	0.2
Industry									
Goods-producing sector	2,491.9	2,486.8	10.4	-5.1	-5.1	59.5	-0.2	-0.2	2.5
Agriculture	498.8	512.7	5.9	13.9	13.9	32.6	2.8	2.8	6.8
Forestry, fishing, mining, quarrying, oil and gas extraction ²	23.8	27.4	2.2	3.6	3.6	-0.4	15.1	15.1	-1.4
Utilities	50.3	47.8	2.3	-2.5	-2.5	-0.9	-5.0	-5.0	-1.8
Construction	13.0	14.1	0.7	1.1	1.1	0.5	8.5	8.5	3.7
Manufacturing	237.2	245.0	4.2	7.8	7.8	25.3	3.3	3.3	11.5
Services-producing sector	174.4	178.3	3.6	3.9	3.9	7.9	2.2	2.2	4.6
Wholesale and retail trade	1,993.1	1,974.1	10.1	-19.0	-19.0	26.9	-1.0	-1.0	1.4
Transportation and warehousing	376.8	389.0	5.6	12.2	12.2	14.4	3.2	3.2	3.8
Finance, insurance, real estate, rental and leasing	135.2	131.5	3.1	-3.7	-3.7	-12.3	-2.7	-2.7	-8.6
Professional, scientific and technical services	159.7	153.5	3.3	-6.2	-6.2	10.8	-3.9	-3.9	7.6
Business, building and other support services	205.2	198.9	4.0	-6.3	-6.3	3.5	-3.1	-3.1	1.8
Educational services	100.3	97.4	3.6	-2.9	-2.9	-7.4	-2.9	-2.9	-7.1
Health care and social assistance	167.7	163.3	3.8	-4.4	-4.4	-1.0	-2.6	-2.6	-0.6
Information, culture and recreation	319.5	318.9	4.3	-0.6	-0.6	29.7	-0.2	-0.2	10.3
Accommodation and food services	132.9	130.0	4.2	-2.9	-2.9	0.0	-2.2	-2.2	0.0
Other services (except public administration)	180.6	176.3	4.3	-4.3	-4.3	-8.6	-2.4	-2.4	-4.7
Public administration	114.6	114.9	3.5	0.3	0.3	1.1	0.3	0.3	1.0
	100.4	100.4	2.2	0.0	0.0	-3.4	0.0	0.0	-3.3

1. Average standard error of change in two consecutive months (see "Sampling Errors" in the **Data Quality** section for further explanations).

2. Also referred to as "Natural resources".

Note: Related CANSIM tables 282-0087 and 282-0088. The sum of individual categories may not always add to the total due to rounding.

Table 5-1**Labour force characteristics by census metropolitan area (seasonally adjusted) — three-month moving average**

	December 2017	January 2018	S.E. ¹	Change from			Percent change from		
				last month	last December	twelve months ago	last month	last December	twelve months ago
				in thousands (except rates)					
St. John's, Newfoundland and Labrador									
Population	184.9	185.0	...	0.1	0.1	2.2	0.1	0.1	1.2
Labour force	120.3	119.8	0.9	-0.5	-0.5	-5.8	-0.4	-0.4	-4.6
Employment	110.0	109.7	0.9	-0.3	-0.3	-3.6	-0.3	-0.3	-3.2
Unemployment	10.3	10.1	0.5	-0.2	-0.2	-2.2	-1.9	-1.9	-17.9
Participation rate	65.1	64.8	0.5	-0.3	-0.3	-3.9
Unemployment rate	8.6	8.4	0.4	-0.2	-0.2	-1.4
Employment rate	59.5	59.3	0.5	-0.2	-0.2	-2.7
Halifax, Nova Scotia									
Population	361.6	362.1	...	0.5	0.5	5.9	0.1	0.1	1.7
Labour force	241.7	243.1	1.3	1.4	1.4	2.7	0.6	0.6	1.1
Employment	224.9	226.4	1.3	1.5	1.5	0.8	0.7	0.7	0.4
Unemployment	16.8	16.6	0.8	-0.2	-0.2	1.9	-1.2	-1.2	12.9
Participation rate	66.8	67.1	0.4	0.3	0.3	-0.4
Unemployment rate	7.0	6.8	0.3	-0.2	-0.2	0.7
Employment rate	62.2	62.5	0.4	0.3	0.3	-0.8
Moncton, New Brunswick									
Population	127.9	128.1	...	0.2	0.2	1.7	0.2	0.2	1.3
Labour force	85.5	85.8	0.8	0.3	0.3	4.3	0.4	0.4	5.3
Employment	80.6	80.6	0.8	0.0	0.0	5.6	0.0	0.0	7.5
Unemployment	4.9	5.2	0.4	0.3	0.3	-1.2	6.1	6.1	-18.8
Participation rate	66.8	67.0	0.6	0.2	0.2	2.5
Unemployment rate	5.7	6.1	0.5	0.4	0.4	-1.8
Employment rate	63.0	62.9	0.6	-0.1	-0.1	3.6
Saint John, New Brunswick									
Population	105.7	105.7	...	0.0	0.0	0.3	0.0	0.0	0.3
Labour force	68.1	66.7	0.8	-1.4	-1.4	-5.6	-2.1	-2.1	-7.7
Employment	64.0	62.4	0.8	-1.6	-1.6	-4.4	-2.5	-2.5	-6.6
Unemployment	4.1	4.3	0.4	0.2	0.2	-1.2	4.9	4.9	-21.8
Participation rate	64.4	63.1	0.7	-1.3	-1.3	-5.5
Unemployment rate	6.0	6.4	0.5	0.4	0.4	-1.2
Employment rate	60.5	59.0	0.7	-1.5	-1.5	-4.4
Saguenay, Quebec									
Population	134.7	134.7	...	0.0	0.0	-0.2	0.0	0.0	-0.1
Labour force	78.8	79.4	0.9	0.6	0.6	0.0	0.8	0.8	0.0
Employment	74.1	74.5	0.9	0.4	0.4	1.0	0.5	0.5	1.4
Unemployment	4.7	4.9	0.4	0.2	0.2	-1.0	4.3	4.3	-16.9
Participation rate	58.5	58.9	0.7	0.4	0.4	0.0
Unemployment rate	6.0	6.2	0.4	0.2	0.2	-1.2
Employment rate	55.0	55.3	0.7	0.3	0.3	0.8
Québec, Quebec									
Population	681.6	681.9	...	0.3	0.3	4.1	0.0	0.0	0.6
Labour force	465.6	467.8	3.2	2.2	2.2	2.6	0.5	0.5	0.6
Employment	447.5	452.2	3.2	4.7	4.7	7.3	1.1	1.1	1.6
Unemployment	18.1	15.6	1.4	-2.5	-2.5	-4.7	-13.8	-13.8	-23.2
Participation rate	68.3	68.6	0.5	0.3	0.3	0.0
Unemployment rate	3.9	3.3	0.3	-0.6	-0.6	-1.1
Employment rate	65.7	66.3	0.5	0.6	0.6	0.7
Sherbrooke, Quebec									
Population	183.8	183.9	...	0.1	0.1	1.6	0.1	0.1	0.9
Labour force	115.7	116.3	1.1	0.6	0.6	3.8	0.5	0.5	3.4
Employment	108.8	109.7	1.1	0.9	0.9	3.2	0.8	0.8	3.0
Unemployment	6.9	6.7	0.4	-0.2	-0.2	0.7	-2.9	-2.9	11.7
Participation rate	62.9	63.2	0.6	0.3	0.3	1.5
Unemployment rate	6.0	5.8	0.4	-0.2	-0.2	0.5
Employment rate	59.2	59.7	0.6	0.5	0.5	1.3

Table 5-1**Labour force characteristics by census metropolitan area (seasonally adjusted) — three-month moving average**

	December 2017	January 2018	S.E. ¹	Change from			Percent change from		
				last month	last December	twelve months ago	last month	last December	twelve months ago
				in thousands (except rates)					
Trois-Rivières, Quebec									
Population	134.0	134.1	...	0.1	0.1	0.6	0.1	0.1	0.4
Labour force	79.1	78.6	0.9	-0.5	-0.5	-1.8	-0.6	-0.6	-2.2
Employment	75.7	75.2	0.9	-0.5	-0.5	0.5	-0.7	-0.7	0.7
Unemployment	3.4	3.3	0.3	-0.1	-0.1	-2.4	-2.9	-2.9	-42.1
Participation rate	59.0	58.6	0.6	-0.4	-0.4	-1.6
Unemployment rate	4.3	4.2	0.4	-0.1	-0.1	-2.9
Employment rate	56.5	56.1	0.7	-0.4	-0.4	0.1
Montréal, Quebec									
Population	3,433.6	3,436.5	...	2.9	2.9	33.9	0.1	0.1	1.0
Labour force	2,312.8	2,319.9	8.3	7.1	7.1	45.5	0.3	0.3	2.0
Employment	2,173.2	2,184.2	8.7	11.0	11.0	61.4	0.5	0.5	2.9
Unemployment	139.6	135.7	5.0	-3.9	-3.9	-16.0	-2.8	-2.8	-10.5
Participation rate	67.4	67.5	0.2	0.1	0.1	0.7
Unemployment rate	6.0	5.8	0.2	-0.2	-0.2	-0.9
Employment rate	63.3	63.6	0.3	0.3	0.3	1.2
Ottawa-Gatineau, Ontario/Quebec									
Population	1,133.6	1,135.4	...	1.8	1.8	18.0	0.2	0.2	1.6
Labour force	769.3	772.4	4.6	3.1	3.1	3.0	0.4	0.4	0.4
Employment	727.1	731.8	4.7	4.7	4.7	6.6	0.6	0.6	0.9
Unemployment	42.2	40.5	2.0	-1.7	-1.7	-3.7	-4.0	-4.0	-8.4
Participation rate	67.9	68.0	0.4	0.1	0.1	-0.9
Unemployment rate	5.5	5.2	0.3	-0.3	-0.3	-0.5
Employment rate	64.1	64.5	0.4	0.4	0.4	-0.4
Ottawa-Gatineau, Quebec part, Ontario/Quebec									
Population	276.6	276.7	...	0.1	0.1	1.9	0.0	0.0	0.7
Labour force	188.3	189.0	1.4	0.7	0.7	2.4	0.4	0.4	1.3
Employment	178.9	179.9	1.4	1.0	1.0	3.8	0.6	0.6	2.2
Unemployment	9.4	9.1	0.6	-0.3	-0.3	-1.4	-3.2	-3.2	-13.3
Participation rate	68.1	68.3	0.5	0.2	0.2	0.4
Unemployment rate	5.0	4.8	0.3	-0.2	-0.2	-0.8
Employment rate	64.7	65.0	0.5	0.3	0.3	0.9
Ottawa-Gatineau, Ontario part, Ontario/Quebec									
Population	857.0	858.6	...	1.6	1.6	16.1	0.2	0.2	1.9
Labour force	581.0	583.4	4.4	2.4	2.4	0.5	0.4	0.4	0.1
Employment	548.2	551.9	4.5	3.7	3.7	2.8	0.7	0.7	0.5
Unemployment	32.7	31.4	1.9	-1.3	-1.3	-2.4	-4.0	-4.0	-7.1
Participation rate	67.8	67.9	0.5	0.1	0.1	-1.3
Unemployment rate	5.6	5.4	0.3	-0.2	-0.2	-0.4
Employment rate	64.0	64.3	0.5	0.3	0.3	-0.9
Kingston, Ontario									
Population	142.0	142.2	...	0.2	0.2	2.0	0.1	0.1	1.4
Labour force	94.2	93.4	0.7	-0.8	-0.8	4.3	-0.8	-0.8	4.8
Employment	89.0	88.2	0.7	-0.8	-0.8	4.3	-0.9	-0.9	5.1
Unemployment	5.2	5.2	0.3	0.0	0.0	0.0	0.0	0.0	0.0
Participation rate	66.3	65.7	0.5	-0.6	-0.6	2.1
Unemployment rate	5.5	5.6	0.3	0.1	0.1	-0.2
Employment rate	62.7	62.0	0.5	-0.7	-0.7	2.2
Peterborough, Ontario									
Population	105.3	105.3	...	0.0	0.0	0.6	0.0	0.0	0.6
Labour force	66.0	65.3	1.4	-0.7	-0.7	-0.7	-1.1	-1.1	-1.1
Employment	62.9	62.3	1.4	-0.6	-0.6	-0.1	-1.0	-1.0	-0.2
Unemployment	3.2	3.0	0.6	-0.2	-0.2	-0.6	-6.3	-6.3	-16.7
Participation rate	62.7	62.0	1.3	-0.7	-0.7	-1.0
Unemployment rate	4.8	4.6	0.8	-0.2	-0.2	-0.9
Employment rate	59.7	59.2	1.3	-0.5	-0.5	-0.4

Table 5-1**Labour force characteristics by census metropolitan area (seasonally adjusted) — three-month moving average**

	December 2017	January 2018	S.E. ¹	Change from			Percent change from		
				last month	last December	twelve months ago	last month	last December	twelve months ago
				in thousands (except rates)					
Oshawa, Ontario									
Population	334.9	335.4	...	0.5	0.5	5.8	0.1	0.1	1.8
Labour force	221.1	219.3	1.8	-1.8	-1.8	-9.2	-0.8	-0.8	-4.0
Employment	209.0	207.9	1.9	-1.1	-1.1	-8.7	-0.5	-0.5	-4.0
Unemployment	12.2	11.4	0.8	-0.8	-0.8	-0.6	-6.6	-6.6	-5.0
Participation rate	66.0	65.4	0.6	-0.6	-0.6	-3.9
Unemployment rate	5.5	5.2	0.4	-0.3	-0.3	-0.1
Employment rate	62.4	62.0	0.6	-0.4	-0.4	-3.7
Toronto, Ontario									
Population	5,340.3	5,351.0	...	10.7	10.7	111.5	0.2	0.2	2.1
Labour force	3,571.5	3,574.0	10.4	2.5	2.5	113.4	0.1	0.1	3.3
Employment	3,356.4	3,363.1	10.4	6.7	6.7	144.7	0.2	0.2	4.5
Unemployment	215.1	211.0	6.1	-4.1	-4.1	-31.2	-1.9	-1.9	-12.9
Participation rate	66.9	66.8	0.2	-0.1	-0.1	0.8
Unemployment rate	6.0	5.9	0.2	-0.1	-0.1	-1.1
Employment rate	62.9	62.8	0.2	-0.1	-0.1	1.4
Hamilton, Ontario									
Population	662.4	663.2	...	0.8	0.8	9.2	0.1	0.1	1.4
Labour force	445.6	445.3	3.3	-0.3	-0.3	20.9	-0.1	-0.1	4.9
Employment	425.1	424.2	3.4	-0.9	-0.9	24.2	-0.2	-0.2	6.1
Unemployment	20.4	21.1	1.5	0.7	0.7	-3.3	3.4	3.4	-13.5
Participation rate	67.3	67.1	0.5	-0.2	-0.2	2.2
Unemployment rate	4.6	4.7	0.3	0.1	0.1	-1.0
Employment rate	64.2	64.0	0.5	-0.2	-0.2	2.8
St. Catharines-Niagara, Ontario									
Population	349.5	349.8	...	0.3	0.3	3.5	0.1	0.1	1.0
Labour force	210.4	211.9	2.1	1.5	1.5	-3.8	0.7	0.7	-1.8
Employment	196.2	199.5	2.1	3.3	3.3	-2.3	1.7	1.7	-1.1
Unemployment	14.2	12.4	0.9	-1.8	-1.8	-1.5	-12.7	-12.7	-10.8
Participation rate	60.2	60.6	0.6	0.4	0.4	-1.7
Unemployment rate	6.7	5.9	0.4	-0.8	-0.8	-0.5
Employment rate	56.1	57.0	0.6	0.9	0.9	-1.3
Kitchener-Cambridge-Waterloo, Ontario									
Population	434.5	435.1	...	0.6	0.6	6.5	0.1	0.1	1.5
Labour force	299.1	296.5	2.4	-2.6	-2.6	1.7	-0.9	-0.9	0.6
Employment	283.0	281.5	2.5	-1.5	-1.5	3.3	-0.5	-0.5	1.2
Unemployment	16.1	15.1	1.0	-1.0	-1.0	-1.6	-6.2	-6.2	-9.6
Participation rate	68.8	68.1	0.5	-0.7	-0.7	-0.7
Unemployment rate	5.4	5.1	0.3	-0.3	-0.3	-0.6
Employment rate	65.1	64.7	0.6	-0.4	-0.4	-0.2
Brantford, Ontario									
Population	115.3	115.4	...	0.1	0.1	1.6	0.1	0.1	1.4
Labour force	78.5	78.8	0.9	0.3	0.3	1.1	0.4	0.4	1.4
Employment	74.8	75.0	1.0	0.2	0.2	0.7	0.3	0.3	0.9
Unemployment	3.7	3.7	0.4	0.0	0.0	0.4	0.0	0.0	12.1
Participation rate	68.1	68.3	0.8	0.2	0.2	0.0
Unemployment rate	4.7	4.7	0.5	0.0	0.0	0.5
Employment rate	64.9	65.0	0.9	0.1	0.1	-0.3
Guelph, Ontario									
Population	133.6	133.8	...	0.2	0.2	2.5	0.1	0.1	1.9
Labour force	97.3	95.2	1.1	-2.1	-2.1	0.2	-2.2	-2.2	0.2
Employment	91.3	89.8	1.2	-1.5	-1.5	-0.2	-1.6	-1.6	-0.2
Unemployment	6.0	5.4	0.5	-0.6	-0.6	0.3	-10.0	-10.0	5.9
Participation rate	72.8	71.2	0.9	-1.6	-1.6	-1.2
Unemployment rate	6.2	5.7	0.5	-0.5	-0.5	0.3
Employment rate	68.3	67.1	0.9	-1.2	-1.2	-1.4

Table 5-1**Labour force characteristics by census metropolitan area (seasonally adjusted) — three-month moving average**

	December 2017	January 2018	S.E. ¹	Change from			Percent change from		
				last month	last December	twelve months ago	last month	last December	twelve months ago
				in thousands (except rates)					
London, Ontario									
Population	434.2	434.8	...	0.6	0.6	6.3	0.1	0.1	1.5
Labour force	260.5	261.4	2.5	0.9	0.9	2.0	0.3	0.3	0.8
Employment	244.4	244.3	2.5	-0.1	-0.1	2.8	0.0	0.0	1.2
Unemployment	16.2	17.1	1.0	0.9	0.9	-0.8	5.6	5.6	-4.5
Participation rate	60.0	60.1	0.6	0.1	0.1	-0.4
Unemployment rate	6.2	6.5	0.4	0.3	0.3	-0.4
Employment rate	56.3	56.2	0.6	-0.1	-0.1	-0.2
Windsor, Ontario									
Population	287.0	287.4	...	0.4	0.4	4.0	0.1	0.1	1.4
Labour force	174.4	175.6	1.8	1.2	1.2	4.4	0.7	0.7	2.6
Employment	163.9	167.6	1.8	3.7	3.7	5.6	2.3	2.3	3.5
Unemployment	10.5	8.0	0.8	-2.5	-2.5	-1.3	-23.8	-23.8	-14.0
Participation rate	60.8	61.1	0.6	0.3	0.3	0.7
Unemployment rate	6.0	4.6	0.4	-1.4	-1.4	-0.8
Employment rate	57.1	58.3	0.6	1.2	1.2	1.1
Barrie, Ontario									
Population	174.1	174.4	...	0.3	0.3	3.0	0.2	0.2	1.8
Labour force	122.2	119.8	1.5	-2.4	-2.4	6.0	-2.0	-2.0	5.3
Employment	118.1	114.1	1.8	-4.0	-4.0	8.7	-3.4	-3.4	8.3
Unemployment	4.1	5.7	0.9	1.6	1.6	-2.7	39.0	39.0	-32.1
Participation rate	70.2	68.7	0.9	-1.5	-1.5	2.3
Unemployment rate	3.4	4.8	0.7	1.4	1.4	-2.6
Employment rate	67.8	65.4	1.0	-2.4	-2.4	3.9
Greater Sudbury, Ontario									
Population	140.6	140.6	...	0.0	0.0	0.3	0.0	0.0	0.2
Labour force	86.8	85.9	0.8	-0.9	-0.9	-2.8	-1.0	-1.0	-3.2
Employment	80.9	80.2	0.9	-0.7	-0.7	-1.6	-0.9	-0.9	-2.0
Unemployment	5.9	5.8	0.4	-0.1	-0.1	-1.1	-1.7	-1.7	-15.9
Participation rate	61.7	61.1	0.6	-0.6	-0.6	-2.1
Unemployment rate	6.8	6.8	0.4	0.0	0.0	-1.0
Employment rate	57.5	57.0	0.6	-0.5	-0.5	-1.3
Thunder Bay, Ontario									
Population	104.8	104.9	...	0.1	0.1	0.1	0.1	0.1	0.1
Labour force	65.1	65.0	0.6	-0.1	-0.1	1.6	-0.2	-0.2	2.5
Employment	61.0	61.2	0.6	0.2	0.2	1.7	0.3	0.3	2.9
Unemployment	4.0	3.8	0.2	-0.2	-0.2	-0.1	-5.0	-5.0	-2.6
Participation rate	62.1	62.0	0.6	-0.1	-0.1	1.5
Unemployment rate	6.1	5.8	0.4	-0.3	-0.3	-0.4
Employment rate	58.2	58.3	0.6	0.1	0.1	1.5
Winnipeg, Manitoba									
Population	679.0	679.8	...	0.8	0.8	11.9	0.1	0.1	1.8
Labour force	460.2	459.4	1.3	-0.8	-0.8	3.4	-0.2	-0.2	0.7
Employment	434.2	433.1	1.4	-1.1	-1.1	6.9	-0.3	-0.3	1.6
Unemployment	26.0	26.3	0.8	0.3	0.3	-3.4	1.2	1.2	-11.4
Participation rate	67.8	67.6	0.2	-0.2	-0.2	-0.7
Unemployment rate	5.6	5.7	0.2	0.1	0.1	-0.8
Employment rate	63.9	63.7	0.2	-0.2	-0.2	-0.1
Regina, Saskatchewan									
Population	206.2	206.5	...	0.3	0.3	3.6	0.1	0.1	1.8
Labour force	148.2	148.7	0.8	0.5	0.5	1.3	0.3	0.3	0.9
Employment	141.4	142.1	0.9	0.7	0.7	2.7	0.5	0.5	1.9
Unemployment	6.8	6.6	0.4	-0.2	-0.2	-1.4	-2.9	-2.9	-17.5
Participation rate	71.9	72.0	0.4	0.1	0.1	-0.6
Unemployment rate	4.6	4.4	0.3	-0.2	-0.2	-1.0
Employment rate	68.6	68.8	0.4	0.2	0.2	0.1

Table 5-1**Labour force characteristics by census metropolitan area (seasonally adjusted) — three-month moving average**

	December 2017	January 2018	S.E. ¹	Change from			Percent change from		
				last month	last December	twelve months ago	last month	last December	twelve months ago
				in thousands (except rates)					
Saskatoon, Saskatchewan									
Population	265.6	266.1	...	0.5	0.5	6.2	0.2	0.2	2.4
Labour force	184.3	183.2	1.1	-1.1	-1.1	-0.8	-0.6	-0.6	-0.4
Employment	170.1	169.7	1.1	-0.4	-0.4	-0.5	-0.2	-0.2	-0.3
Unemployment	14.1	13.5	0.6	-0.6	-0.6	-0.2	-4.3	-4.3	-1.5
Participation rate	69.4	68.8	0.4	-0.6	-0.6	-2.0
Unemployment rate	7.7	7.4	0.3	-0.3	-0.3	0.0
Employment rate	64.0	63.8	0.4	-0.2	-0.2	-1.7
Calgary, Alberta									
Population	1,229.1	1,230.7	...	1.6	1.6	19.3	0.1	0.1	1.6
Labour force	901.4	910.4	4.1	9.0	9.0	1.0	1.0	1.0	0.1
Employment	834.1	840.9	4.2	6.8	6.8	21.7	0.8	0.8	2.6
Unemployment	67.3	69.5	2.8	2.2	2.2	-20.7	3.3	3.3	-22.9
Participation rate	73.3	74.0	0.3	0.7	0.7	-1.1
Unemployment rate	7.5	7.6	0.3	0.1	0.1	-2.3
Employment rate	67.9	68.3	0.3	0.4	0.4	0.7
Edmonton, Alberta									
Population	1,145.8	1,147.4	...	1.6	1.6	19.1	0.1	0.1	1.7
Labour force	834.0	828.6	3.9	-5.4	-5.4	13.0	-0.6	-0.6	1.6
Employment	773.7	769.1	4.2	-4.6	-4.6	20.1	-0.6	-0.6	2.7
Unemployment	60.3	59.4	2.5	-0.9	-0.9	-7.2	-1.5	-1.5	-10.8
Participation rate	72.8	72.2	0.3	-0.6	-0.6	-0.1
Unemployment rate	7.2	7.2	0.3	0.0	0.0	-1.0
Employment rate	67.5	67.0	0.4	-0.5	-0.5	0.6
Kelowna, British Columbia									
Population	160.6	160.9	...	0.3	0.3	3.6	0.2	0.2	2.3
Labour force	108.1	107.3	1.3	-0.8	-0.8	3.7	-0.7	-0.7	3.6
Employment	101.5	100.2	1.3	-1.3	-1.3	4.5	-1.3	-1.3	4.7
Unemployment	6.7	7.0	0.6	0.3	0.3	-0.9	4.5	4.5	-11.4
Participation rate	67.3	66.7	0.8	-0.6	-0.6	0.8
Unemployment rate	6.2	6.5	0.6	0.3	0.3	-1.1
Employment rate	63.2	62.3	0.8	-0.9	-0.9	1.5
Abbotsford-Mission, British Columbia									
Population	151.1	151.3	...	0.2	0.2	2.8	0.1	0.1	1.9
Labour force	97.7	97.8	0.9	0.1	0.1	-2.1	0.1	0.1	-2.1
Employment	93.0	93.5	0.9	0.5	0.5	-0.2	0.5	0.5	-0.2
Unemployment	4.7	4.3	0.4	-0.4	-0.4	-1.9	-8.5	-8.5	-30.6
Participation rate	64.7	64.6	0.6	-0.1	-0.1	-2.7
Unemployment rate	4.8	4.4	0.4	-0.4	-0.4	-1.8
Employment rate	61.5	61.8	0.6	0.3	0.3	-1.3
Vancouver, British Columbia									
Population	2,206.5	2,208.6	...	2.1	2.1	29.5	0.1	0.1	1.4
Labour force	1,485.3	1,498.7	5.9	13.4	13.4	68.8	0.9	0.9	4.8
Employment	1,424.6	1,437.2	6.0	12.6	12.6	78.7	0.9	0.9	5.8
Unemployment	60.7	61.5	2.9	0.8	0.8	-9.9	1.3	1.3	-13.9
Participation rate	67.3	67.9	0.3	0.6	0.6	2.3
Unemployment rate	4.1	4.1	0.2	0.0	0.0	-0.9
Employment rate	64.6	65.1	0.3	0.5	0.5	2.8
Victoria, British Columbia									
Population	312.4	312.6	...	0.2	0.2	3.8	0.1	0.1	1.2
Labour force	200.0	200.6	1.7	0.6	0.6	3.8	0.3	0.3	1.9
Employment	193.0	192.7	1.7	-0.3	-0.3	5.0	-0.2	-0.2	2.7
Unemployment	7.0	7.9	0.6	0.9	0.9	-1.2	12.9	12.9	-13.2
Participation rate	64.0	64.2	0.6	0.2	0.2	0.5
Unemployment rate	3.5	3.9	0.3	0.4	0.4	-0.7
Employment rate	61.8	61.6	0.6	-0.2	-0.2	0.8

1. Average standard error of change in two consecutive months (see "Sampling Errors" in the **Data Quality** section for further explanations).**Note:** Estimates in this table are based on 2011 Census boundaries. Related CANSIM table 282-0135. The sum of individual categories may not always add to the total due to rounding.

Table 5-2
Labour force characteristics by census metropolitan area (seasonally adjusted) — Monthly

	December 2017	January 2018	S.E. ¹	Change from			Percent change from		
				last month	last December	twelve months ago	last month	last December	twelve months ago
				in thousands (except rates)			percent		
Montréal, Quebec									
Population	3,436.2	3,439.8	...	3.6	3.6	34.5	0.1	0.1	1.0
Labour force	2,313.2	2,339.7	16.7	26.5	26.5	52.1	1.1	1.1	2.3
Employment	2,186.1	2,197.9	17.0	11.8	11.8	60.6	0.5	0.5	2.8
Unemployment	127.2	141.8	11.6	14.6	14.6	-8.5	11.5	11.5	-5.7
Participation rate	67.3	68.0	0.5	0.7	0.7	0.8
Unemployment rate	5.5	6.1	0.5	0.6	0.6	-0.5
Employment rate	63.6	63.9	0.5	0.3	0.3	1.1
Toronto, Ontario									
Population	5,349.5	5,363.1	...	13.6	13.6	115.0	0.3	0.3	2.2
Labour force	3,597.3	3,555.6	21.5	-41.7	-41.7	75.0	-1.2	-1.2	2.2
Employment	3,378.9	3,352.9	21.2	-26.0	-26.0	122.3	-0.8	-0.8	3.8
Unemployment	218.4	202.7	14.3	-15.7	-15.7	-47.3	-7.2	-7.2	-18.9
Participation rate	67.2	66.3	0.4	-0.9	-0.9	0.0
Unemployment rate	6.1	5.7	0.4	-0.4	-0.4	-1.5
Employment rate	63.2	62.5	0.4	-0.7	-0.7	0.9
Vancouver, British Columbia									
Population	2,208.5	2,210.9	...	2.4	2.4	29.7	0.1	0.1	1.4
Labour force	1,494.5	1,508.5	11.9	14.0	14.0	74.3	0.9	0.9	5.2
Employment	1,436.8	1,447.1	11.7	10.3	10.3	82.5	0.7	0.7	6.0
Unemployment	57.8	61.4	7.1	3.6	3.6	-8.3	6.2	6.2	-11.9
Participation rate	67.7	68.2	0.5	0.5	0.5	2.4
Unemployment rate	3.9	4.1	0.5	0.2	0.2	-0.8
Employment rate	65.1	65.5	0.5	0.4	0.4	2.9

1. Average standard error of change in two consecutive months (see "Sampling Errors" in the **Data Quality** section for further explanations).

Note: Estimates in this table are based on 2011 Census boundaries. Related CANSIM table 282-0136. The sum of individual categories may not always add to the total due to rounding.

Table 6-1**Labour force characteristics — by province and economic region,¹ unadjusted for seasonality, three-month moving average ending in January 2017 and January 2018**

	Population	Labour force ²	Employment	Unemployment	Participation rate	Unemployment rate	Employment rate
	in thousands				percent		
Canada							
2017	29,720.1	19,376.0	18,089.6	1,286.3	65.2	6.6	60.9
2018	30,062.2	19,561.3	18,452.9	1,108.4	65.1	5.7	61.4
Newfoundland and Labrador							
2017	445.0	262.8	222.1	40.7	59.1	15.5	49.9
2018	445.0	259.8	219.5	40.3	58.4	15.5	49.3
Avalon Peninsula [1010]							
2017	236.1	153.3	134.8	18.5	64.9	12.1	57.1
2018	237.7	146.2	128.1	18.1	61.5	12.4	53.9
South Coast-Burin Peninsula and Notre Dame-Central Bonavista Bay [1020, 1040]							
2017	121.9	60.9	47.0	13.8	50.0	22.7	38.6
2018	121.0	65.3	50.6	14.7	54.0	22.5	41.8
West Coast-Northern Peninsula-Labrador [1030]							
2017	87.0	48.6	40.2	8.4	55.9	17.3	46.2
2018	86.3	48.3	40.8	7.6	56.0	15.7	47.3
Prince Edward Island							
2017	122.4	78.8	69.6	9.2	64.4	11.7	56.9
2018	124.4	80.9	71.9	8.9	65.0	11.0	57.8
Nova Scotia							
2017	790.1	481.8	443.5	38.3	61.0	7.9	56.1
2018	795.3	487.1	447.2	39.8	61.2	8.2	56.2
Cape Breton [1210]							
2017	105.5	54.8	47.1	7.7	51.9	14.1	44.6
2018	104.9	55.1	47.2	7.9	52.5	14.3	45.0
North Shore [1220]							
2017	128.0	76.9	70.6	6.3	60.1	8.2	55.2
2018	127.7	73.9	67.3	6.7	57.9	9.1	52.7
Annapolis Valley [1230]							
2017	102.7	57.7	53.3	4.5	56.2	7.8	51.9
2018	103.1	63.3	58.2	5.1	61.4	8.1	56.5
Southern [1240]							
2017	97.6	52.5	46.7	5.9	53.8	11.2	47.8
2018	97.5	52.2	47.7	4.5	53.5	8.6	48.9
Halifax [1250]							
2017	356.2	239.9	225.8	14.0	67.3	5.8	63.4
2018	362.1	242.5	226.9	15.7	67.0	6.5	62.7
New Brunswick							
2017	623.9	380.8	347.2	33.7	61.0	8.8	55.6
2018	625.7	378.7	346.8	31.9	60.5	8.4	55.4
Campbellton-Miramichi [1310]							
2017	128.1	68.1	57.5	10.5	53.2	15.4	44.9
2018	127.6	66.8	58.0	8.8	52.4	13.2	45.5
Moncton-Richibucto [1320]							
2017	179.2	111.8	101.8	9.9	62.4	8.9	56.8
2018	180.7	116.7	108.0	8.7	64.6	7.5	59.8
Saint John-St. Stephen [1330]							
2017	141.8	91.4	84.6	6.8	64.5	7.4	59.7
2018	142.0	85.8	79.7	6.1	60.4	7.1	56.1
Fredericton-Oromocto [1340]							
2017	111.4	72.2	68.1	4.1	64.8	5.7	61.1
2018	112.4	70.0	64.5	5.5	62.3	7.9	57.4
Edmundston-Woodstock [1350]							
2017	63.4	37.4	35.1	2.3	59.0	6.1	55.4
2018	63.0	39.4	36.5	2.9	62.5	7.4	57.9
Quebec							
2017	6,906.7	4,434.7	4,150.5	284.2	64.2	6.4	60.1
2018	6,953.9	4,463.4	4,230.8	232.7	64.2	5.2	60.8

Table 6-1**Labour force characteristics — by province and economic region,¹ unadjusted for seasonality, three-month moving average ending in January 2017 and January 2018**

	Population	Labour force ²	Employment	Unemployment	Participation rate	Unemployment rate	Employment rate
	in thousands				percent		
Gaspésie-Îles-de-la-Madeleine [2410]							
2017	77.0	40.9	34.8	6.1	53.1	14.9	45.2
2018	76.5	38.7	33.6	5.1	50.6	13.2	43.9
Bas-Saint-Laurent [2415]							
2017	168.8	94.2	84.4	9.8	55.8	10.4	50.0
2018	168.3	89.8	85.5	4.3	53.4	4.8	50.8
Capitale-Nationale [2420]							
2017	623.5	431.1	410.8	20.3	69.1	4.7	65.9
2018	626.7	428.8	413.2	15.6	68.4	3.6	65.9
Chaudière-Appalaches [2425]							
2017	350.2	221.8	211.1	10.7	63.3	4.8	60.3
2018	351.8	229.8	223.3	6.4	65.3	2.8	63.5
Estrie [2430]							
2017	271.6	160.5	153.2	7.3	59.1	4.5	56.4
2018	273.2	162.4	155.1	7.3	59.4	4.5	56.8
Centre-du-Québec [2433]							
2017	201.4	130.3	122.5	7.8	64.7	6.0	60.8
2018	202.5	118.3	113.5	4.8	58.4	4.1	56.0
Montréal [2435]							
2017	1,263.5	817.7	776.4	41.3	64.7	5.1	61.4
2018	1,273.2	847.1	812.2	34.9	66.5	4.1	63.8
Montréal [2440]							
2017	1,687.8	1,111.2	1,025.2	86.1	65.8	7.7	60.7
2018	1,704.4	1,112.4	1,034.9	77.5	65.3	7.0	60.7
Laval [2445]							
2017	356.5	231.6	211.1	20.5	65.0	8.9	59.2
2018	360.1	245.7	230.6	15.2	68.2	6.2	64.0
Lanaudière [2450]							
2017	416.0	258.8	239.3	19.5	62.2	7.5	57.5
2018	419.2	278.9	263.9	14.9	66.5	5.3	63.0
Laurentides [2455]							
2017	500.7	327.7	313.1	14.6	65.4	4.5	62.5
2018	507.1	308.2	291.5	16.7	60.8	5.4	57.5
Outaouais [2460]							
2017	321.3	209.2	197.2	12.1	65.1	5.8	61.4
2018	323.4	209.5	200.1	9.4	64.8	4.5	61.9
Abitibi-Témiscamingue [2465]							
2017	120.5	79.8	74.8	5.0	66.2	6.3	62.1
2018	120.3	79.2	75.8	3.4	65.8	4.3	63.0
Mauricie [2470]							
2017	225.3	122.4	114.2	8.1	54.3	6.6	50.7
2018	225.5	118.1	111.5	6.6	52.4	5.6	49.4
Saguenay-Lac-Saint-Jean [2475]							
2017	231.2	138.9	127.8	11.1	60.1	8.0	55.3
2018	230.8	137.4	129.9	7.6	59.5	5.5	56.3
Côte-Nord and Nord-du-Québec [2480, 2490]							
2017	91.6	58.7	54.7	4.0	64.1	6.8	59.7
2018	90.9	59.0	56.1	2.9	64.9	4.9	61.7
Ontario							
2017	11,592.4	7,463.2	7,018.6	444.5	64.4	6.0	60.5
2018	11,774.2	7,563.3	7,172.6	390.6	64.2	5.2	60.9
Ottawa [3510]							
2017	1,113.9	742.1	703.9	38.2	66.6	5.1	63.2
2018	1,130.0	739.1	702.7	36.4	65.4	4.9	62.2
Kingston-Pembroke [3515]							
2017	379.1	232.1	222.7	9.4	61.2	4.0	58.7
2018	381.8	210.8	201.6	9.2	55.2	4.4	52.8
Muskoka-Kawartha [3520]							
2017	329.2	198.2	187.9	10.3	60.2	5.2	57.1
2018	332.1	186.2	175.2	11.0	56.1	5.9	52.8

Table 6-1**Labour force characteristics — by province and economic region,¹ unadjusted for seasonality, three-month moving average ending in January 2017 and January 2018**

	Population	Labour force ²	Employment	Unemployment	Participation rate	Unemployment rate	Employment rate
	in thousands				percent		
Toronto [3530]							
2017	5,491.5	3,600.5	3,366.5	234.0	65.6	6.5	61.3
2018	5,604.3	3,706.8	3,507.5	199.4	66.1	5.4	62.6
Kitchener-Waterloo-Barrie [3540]							
2017	1,099.5	733.2	695.3	37.9	66.7	5.2	63.2
2018	1,119.0	735.1	703.7	31.5	65.7	4.3	62.9
Hamilton-Niagara Peninsula [3550]							
2017	1,217.1	777.1	732.8	44.3	63.8	5.7	60.2
2018	1,233.6	796.7	756.9	39.8	64.6	5.0	61.4
London [3560]							
2017	560.9	342.9	324.0	18.9	61.1	5.5	57.8
2018	568.3	342.5	321.5	21.0	60.3	6.1	56.6
Windsor-Sarnia [3570]							
2017	526.5	313.4	295.2	18.2	59.5	5.8	56.1
2018	530.3	318.2	304.0	14.1	60.0	4.4	57.3
Stratford-Bruce Peninsula [3580]							
2017	246.4	159.2	150.9	8.3	64.6	5.2	61.2
2018	247.3	165.2	158.0	7.2	66.8	4.4	63.9
Northeast [3590]							
2017	456.0	258.9	240.4	18.5	56.8	7.1	52.7
2018	455.4	256.4	240.7	15.6	56.3	6.1	52.9
Northwest [3595]							
2017	172.2	105.6	99.0	6.6	61.3	6.3	57.5
2018	172.0	106.3	100.8	5.6	61.8	5.3	58.6
Manitoba							
2017	1,004.7	669.4	630.2	39.3	66.6	5.9	62.7
2018	1,018.8	676.8	640.0	36.8	66.4	5.4	62.8
Southeast [4610]							
2017	91.8	62.2	59.6	2.6	67.8	4.2	64.9
2018	93.7	63.4	59.8	3.7	67.7	5.8	63.8
South Central and North Central [4620, 4640]							
2017	85.8	55.5	53.8	1.7	64.7	3.1	62.7
2018	86.8	58.6	56.3	2.3	67.5	3.9	64.9
Southwest [4630]							
2017	88.8	56.0	53.1	2.9	63.1	5.2	59.8
2018	89.6	57.9	55.3	2.6	64.6	4.5	61.7
Winnipeg [4650]							
2017	607.2	409.5	382.1	27.5	67.4	6.7	62.9
2018	617.9	413.3	388.8	24.5	66.9	5.9	62.9
Interlake [4660]							
2017	75.7	48.4	45.8	2.7	63.9	5.6	60.5
2018	76.1	46.4	44.6	1.8	61.0	3.9	58.6
Parklands and North [4670, 4680]							
2017	55.4	37.8	35.9	1.9	68.2	5.0	64.8
2018	54.7	37.1	35.1	2.0	67.8	5.4	64.2
Saskatchewan							
2017	872.3	602.8	563.1	39.7	69.1	6.6	64.6
2018	880.2	596.9	561.3	35.6	67.8	6.0	63.8
Regina-Moose Mountain [4710]							
2017	267.5	191.3	180.9	10.3	71.5	5.4	67.6
2018	270.6	192.2	183.0	9.2	71.0	4.8	67.6
Swift Current-Moose Jaw [4720]							
2017	81.8	54.6	52.8	1.8	66.7	3.3	64.5
2018	81.4	52.3	50.3	1.9	64.3	3.6	61.8
Saskatoon-Biggar [4730]							
2017	302.1	210.6	195.5	15.1	69.7	7.2	64.7
2018	307.9	208.8	194.1	14.6	67.8	7.0	63.0
Yorkton-Melville [4740]							
2017	61.5	40.8	38.1	2.7	66.3	6.6	62.0
2018	60.6	38.3	35.6	2.7	63.2	7.0	58.7

Table 6-1**Labour force characteristics — by province and economic region,¹ unadjusted for seasonality, three-month moving average ending in January 2017 and January 2018**

	Population	Labour force ²	Employment	Unemployment	Participation rate	Unemployment rate	Employment rate
	in thousands				percent		
Prince Albert and Northern [4750, 4760]							
2017	159.4	105.6	95.8	9.8	66.2	9.3	60.1
2018	159.5	105.3	98.2	7.1	66.0	6.7	61.6
Alberta							
2017	3,409.8	2,461.5	2,251.5	210.1	72.2	8.5	66.0
2018	3,444.1	2,464.0	2,295.4	168.6	71.5	6.8	66.6
Lethbridge-Medicine Hat [4810]							
2017	229.7	156.0	145.4	10.6	67.9	6.8	63.3
2018	229.9	153.3	143.2	10.1	66.7	6.6	62.3
Camrose-Drumheller [4820]							
2017	160.7	109.2	99.5	9.7	68.0	8.9	61.9
2018	159.5	103.0	98.0	5.0	64.6	4.9	61.4
Calgary [4830]							
2017	1,297.1	963.5	871.8	91.7	74.3	9.5	67.2
2018	1,316.9	963.4	891.6	71.9	73.2	7.5	67.7
Banff-Jasper-Rocky Mountain House and Athabasca-Grande Prairie-Peace River [4840, 4870]							
2017	276.2	194.6	180.8	13.9	70.5	7.1	65.5
2018	275.2	195.8	184.1	11.6	71.1	5.9	66.9
Red Deer [4850]							
2017	172.7	123.4	112.0	11.4	71.5	9.2	64.9
2018	173.6	124.2	117.3	6.8	71.5	5.5	67.6
Edmonton [4860]							
2017	1,154.9	825.1	760.5	64.6	71.4	7.8	65.8
2018	1,172.7	835.0	777.6	57.5	71.2	6.9	66.3
Wood Buffalo-Cold Lake [4880]							
2017	118.4	89.7	81.5	8.2	75.8	9.1	68.8
2018	116.5	89.2	83.6	5.6	76.6	6.3	71.8
British Columbia							
2017	3,952.9	2,540.0	2,393.4	146.6	64.3	5.8	60.5
2018	4,000.7	2,590.5	2,467.4	123.1	64.8	4.8	61.7
Vancouver Island and Coast [5910]							
2017	665.0	401.4	380.0	21.4	60.4	5.3	57.1
2018	672.2	404.9	383.3	21.6	60.2	5.3	57.0
Lower Mainland-Southwest [5920]							
2017	2,475.0	1,608.2	1,528.5	79.6	65.0	4.9	61.8
2018	2,510.1	1,672.2	1,605.9	66.3	66.6	4.0	64.0
Thompson-Okanagan [5930]							
2017	438.9	274.1	250.5	23.6	62.5	8.6	57.1
2018	444.0	270.3	250.8	19.5	60.9	7.2	56.5
Kootenay [5940]							
2017	122.6	79.5	73.4	6.1	64.8	7.7	59.9
2018	123.1	72.6	67.2	5.4	59.0	7.4	54.6
Cariboo [5950]							
2017	127.9	88.2	80.3	7.8	69.0	8.8	62.8
2018	128.0	85.4	79.3	6.2	66.7	7.3	62.0
North Coast and Nechako [5960, 5970]							
2017	67.1	44.1	40.7	3.3	65.7	7.5	60.7
2018	66.8	45.9	43.3	2.6	68.7	5.7	64.8
Northeast [5980]							
2017	56.5	44.6	39.9	4.7	78.9	10.5	70.6
2018	56.4	39.2	37.7	1.5	69.5	3.8	66.8

1. For geographic descriptions of economic regions, refer to the Guide to the Labour Force Survey (71-543-G).

2. The labour force is composed of those members of the civilian non-institutional population 15 years of age and over who, during the reference week, were employed or unemployed.

Notes: Estimates in this table are based on 2011 Census boundaries. Related CANSIM table 282-0122. As a result of the wildfire affecting northern Alberta, LFS data for the census agglomeration of Wood Buffalo were not collected from May to July 2016. Data collection resumed in August 2016. Estimates for the economic region of Wood Buffalo–Cold Lake are not available for June, July, August, and September 2016.

Table 6-2**Labour force characteristics — by territory (seasonally adjusted) - three-month moving average**

	December 2017	January 2018	S.E. ¹	Change from			Percent change from		
				last month	last December	twelve months ago	last month	last December	twelve months ago
				in thousands (except rates)					
Yukon²									
Population	29.0	29.1	...	0.1	0.1	0.7	0.3	0.3	2.5
Labour force	21.9	21.8	0.2	-0.1	-0.1	0.1	-0.5	-0.5	0.5
Employment	21.1	21.1	0.2	0.0	0.0	0.5	0.0	0.0	2.4
Unemployment	0.8	0.6	0.1	-0.2	-0.2	-0.4	-25.0	-25.0	-40.0
Participation rate	75.5	74.9	0.7	-0.6	-0.6	-1.5
Unemployment rate	3.7	2.8	0.5	-0.9	-0.9	-1.8
Employment rate	72.8	72.5	0.8	-0.3	-0.3	0.0
Northwest Territories³									
Population	32.4	32.4	...	0.0	0.0	0.0	0.0	0.0	0.0
Labour force	22.6	22.9	0.3	0.3	0.3	0.1	1.3	1.3	0.4
Employment	21.0	20.9	0.2	-0.1	-0.1	-0.2	-0.5	-0.5	-0.9
Unemployment	1.6	2.0	0.2	0.4	0.4	0.4	25.0	25.0	25.0
Participation rate	69.8	70.7	0.8	0.9	0.9	0.3
Unemployment rate	7.1	8.7	0.7	1.6	1.6	1.7
Employment rate	64.8	64.5	0.7	-0.3	-0.3	-0.6
Nunavut⁴									
Population	24.6	24.6	...	0.0	0.0	0.4	0.0	0.0	1.7
Labour force	15.5	15.5	0.2	0.0	0.0	0.2	0.0	0.0	1.3
Employment	13.6	13.3	0.2	-0.3	-0.3	-0.1	-2.2	-2.2	-0.7
Unemployment	1.9	2.1	0.2	0.2	0.2	0.2	10.5	10.5	10.5
Participation rate	63.3	63.0	0.8	-0.3	-0.3	-0.2
Unemployment rate	12.1	13.8	0.9	1.7	1.7	1.3
Employment rate	55.6	54.3	0.8	-1.3	-1.3	-1.0

1. Average standard error of change in two consecutive months (see "Sampling Errors" in the **Data Quality** section for further explanations).

2. Since 1992, the Labour force survey (LFS) has been conducted in the Yukon, using an alternative methodology that accommodates some of the operational difficulties inherent to remote locales. These estimates are not included in the national totals. In 1995, the LFS in the Yukon underwent a sample redesign. One result of the redesign was that the covered population increased from 85% to 92%, which is reflected by the sharp increase in the three month moving averages estimates of January, February and March of 1995 for all the level estimates. Users are therefore warned to be cautious when comparing estimates before January 1995 to estimates for January 1995 and forward.

3. Since 2001, the Labour force survey (LFS) has been administered in the Northwest Territories, using an alternative methodology that accommodates some of the operational difficulties inherent to remote locales. These estimates are not included in national totals.

4. Since 2004, the Labour force survey (LFS) has been administered in Nunavut, using an alternative methodology that accommodates some of the operational difficulties inherent to remote locales. These estimates are 3-month moving averages and are not included in national totals. From January 2004 to December 2007, estimates represent about 70% of all Nunavut residents aged 15 and over. Starting in January 2008, coverage was extended to 92%, so that by March 2008, the 3-month moving average is completely based on the extended coverage. Because of the large difference in coverage, users are recommended not to compare estimates prior to January 2008 with data afterwards. The January and February 2008 3-month moving average estimates are based on a mix of both coverages, since the extended coverage was introduced in January 2008. Estimates from January 2004 to December 2007 are based on the 10 largest communities in Nunavut: Iqaluit, Rankin Inlet, Cambridge Bay, Kugluktuk, Baker Lake, Arviat, Pond Inlet, Cape Dorset, Pangnirtung, Igloolik. Estimates from March 2008 to present cover the above communities as well as: Taloyoak, Gjoa Haven, Kugaaruk, Coral Harbour, Repulse Bay, Qikiqtarjuaq, Arctic Bay, Hall Beach, Clyde River.

Note: Related CANSIM table 282-0100.

Table 7**Average usual hours and wages of employees by selected characteristics, Canada, unadjusted for seasonality**

	Employees				Full-time			Part-time		
		Average	Average	Average		Average	Average		Average	Average
	Number	weekly hours	weekly wages	hourly wages	Number	weekly hours	weekly wages	Number	weekly hours	weekly wages
	thousands		current dollars		thousands		current dollars	thousands		current dollars
January 2018										
15 years and over	15,371.8	35.0	975.68	26.83	12,523.2	39.1	1,122.95	2,848.5	16.9	328.21
15 to 24 years	2,214.3	25.5	430.39	15.72	1,019.2	38.6	702.41	1,195.0	14.3	198.39
25 years and over	13,157.5	36.6	1,067.44	28.70	11,504.0	39.2	1,160.21	1,653.5	18.8	422.03
Males	7,691.4	37.4	1,107.86	28.81	6,755.2	40.3	1,221.00	936.2	16.2	291.52
Females	7,680.3	32.7	843.31	24.85	5,768.0	37.8	1,008.13	1,912.3	17.3	346.17
Union coverage										
Union coverage	4,674.8	35.7	1,094.14	30.25	4,011.3	38.4	1,196.01	663.5	19.0	478.34
No union coverage	10,696.9	34.7	923.91	25.33	8,511.9	39.5	1,088.53	2,185.0	16.3	282.62
Job permanency										
Permanent employees	13,549.8	36.0	1,018.31	27.46	11,553.8	39.1	1,133.75	1,996.0	17.9	350.08
Temporary employees	1,821.9	27.7	658.63	22.16	969.4	39.0	994.24	852.5	14.7	277.00
Occupation										
Management occupations	1,083.7	39.5	1,705.00	43.30	1,056.5	40.0	1,731.80	27.2	19.3	665.39
Business, finance and administration occupations	2,673.9	35.4	956.37	26.57	2,315.5	38.2	1,043.62	358.4	17.5	392.73
Natural and applied sciences and related occupations	1,298.9	38.4	1,415.26	36.87	1,254.9	39.1	1,443.67	44.0	18.0	605.30
Health occupations	1,175.8	33.7	1,005.65	29.66	903.3	38.0	1,140.85	272.5	19.5	557.45
Occupations in education, law and social, community and government services	1,830.0	33.5	1,112.32	32.36	1,472.5	37.6	1,276.13	357.6	16.3	437.72
Occupations in art, culture, recreation and sport	315.6	28.5	737.28	23.77	197.4	38.5	1,040.91	118.2	11.8	230.39
Sales and service occupations	3,939.8	30.2	552.99	17.24	2,462.0	38.3	741.98	1,477.8	16.7	238.13
Trades, transport and equipment operators and related occupations	2,021.3	40.0	1,061.27	26.22	1,886.5	41.5	1,112.47	134.8	18.1	344.73
Natural resources, agriculture and related production occupations	216.2	41.8	1,153.83	26.45	189.0	45.8	1,285.55	27.2	14.4	237.65
Occupations in manufacturing and utilities	816.4	39.4	894.84	22.44	785.6	40.3	918.60	30.8	17.6	288.83
January 2017										
15 years and over	15,245.4	34.8	941.16	25.97	12,241.7	39.2	1,094.06	3,003.7	17.0	318.00
15 to 24 years	2,210.0	25.1	408.34	15.11	970.8	38.5	682.88	1,239.1	14.5	193.25
25 years and over	13,035.5	36.4	1,031.49	27.81	11,270.9	39.2	1,129.48	1,764.6	18.7	405.61
Males	7,586.5	37.1	1,070.32	27.90	6,596.5	40.3	1,187.91	990.0	16.2	286.79
Females	7,659.0	32.4	813.22	24.05	5,645.3	37.8	984.40	2,013.7	17.3	333.35
Union coverage										
Union coverage	4,682.8	35.4	1,067.56	29.69	3,958.7	38.4	1,177.01	724.1	18.8	469.17
No union coverage	10,562.6	34.5	885.12	24.32	8,283.0	39.5	1,054.41	2,279.6	16.4	269.98
Job permanency										
Permanent employees	13,389.4	35.8	983.31	26.58	11,245.0	39.2	1,106.49	2,144.4	18.0	337.34
Temporary employees	1,856.0	27.7	637.10	21.51	996.8	39.1	953.79	859.3	14.4	269.73
Occupation										
Management occupations	1,004.8	39.6	1,632.70	41.32	977.4	40.2	1,663.91	27.4	17.2	517.23
Business, finance and administration occupations	2,639.4	35.4	931.89	25.86	2,257.9	38.3	1,024.93	381.5	18.2	381.18
Natural and applied sciences and related occupations	1,205.6	38.1	1,363.36	35.50	1,152.8	39.1	1,404.27	52.7	16.9	469.33
Health occupations	1,127.8	33.4	978.08	29.07	850.6	37.8	1,116.04	277.1	19.9	554.61
Occupations in education, law and social, community and government services	1,888.5	33.3	1,088.34	31.87	1,485.5	37.9	1,264.12	403.0	16.4	440.32
Occupations in art, culture, recreation and sport	352.7	27.6	706.33	23.07	207.2	39.0	1,063.70	145.4	11.4	197.14

Table 7**Average usual hours and wages of employees by selected characteristics, Canada, unadjusted for seasonality**

	Employees				Full-time			Part-time		
	Number	Average weekly hours	Average weekly wages	Average hourly wages	Number	Average weekly hours	Average weekly wages	Number	Average weekly hours	Average weekly wages
	thousands		current dollars		thousands		current dollars	thousands		current dollars
Sales and service occupations	3,976.4	30.2	534.94	16.61	2,474.8	38.4	722.51	1,501.7	16.7	225.82
Trades, transport and equipment operators and related occupations	2,037.2	39.5	1,037.69	25.86	1,881.3	41.4	1,095.17	155.9	17.4	343.99
Natural resources, agriculture and related production occupations	225.5	42.5	1,142.79	25.75	201.3	45.7	1,246.85	24.2	15.7	277.01
Occupations in manufacturing and utilities	787.7	39.2	886.64	22.41	752.9	40.1	912.23	34.8	19.5	333.42

Note: Related CANSIM table 282-0167.

Table 8**Regional unemployment rates used by the Employment Insurance program,¹ seasonally adjusted, three-month moving average**

Region	Effective from February 11, 2018 to March 10, 2018
	percent
Newfoundland and Labrador	
01. St. John's, Newfoundland and Labrador	7.9
02. Newfoundland and Labrador ²	19.6
Prince Edward Island³	
03. Charlottetown, Prince Edward Island	6.6
04. Prince Edward Island ⁴	12.9
Nova Scotia	
05. Eastern Nova Scotia	14.6
06. Western Nova Scotia	8.6
07. Halifax, Nova Scotia	6.9
New Brunswick	
08. Fredericton-Moncton-Saint John, New Brunswick	7.0
09. Madawaska-Charlotte, New Brunswick	8.4
10. Restigouche-Albert, New Brunswick	11.9
Quebec	
11. Gaspésie-Îles-de-la-Madeleine, Quebec	12.7
12. Quebec, Quebec	3.4
13. Trois-Rivières, Quebec	4.2
14. South Central Quebec	2.4
15. Sherbrooke, Quebec	6.1
16. Montérégie, Quebec	5.4
17. Montreal, Quebec	6.0
18. Central Quebec	5.9
19. North Western Quebec	6.6
20. Lower Saint Lawrence and North Shore, Quebec	5.9
21. Hull, Quebec	4.9
22. Chicoutimi-Jonquière, Quebec	6.4
Ontario	
23. Ottawa, Ontario	5.5
24. Eastern Ontario	6.6
25. Kingston, Ontario	5.5
26. Central Ontario	5.8
27. Oshawa, Ontario	5.5
28. Toronto, Ontario	5.9
29. Hamilton, Ontario	4.8
30. St. Catharines, Ontario	6.0
31. London, Ontario	6.4
32. Niagara, Ontario	7.5
33. Windsor, Ontario	5.6
34. Kitchener, Ontario	4.7
35. Huron, Ontario	4.7
36. South Central Ontario	5.4
37. Sudbury, Ontario	6.5
38. Thunder Bay, Ontario	5.4
39. Northern Ontario	11.1
Manitoba	
40. Winnipeg, Manitoba	5.7
41. Southern Manitoba	6.9
42. Northern Manitoba	33.6
Saskatchewan	
43. Regina, Saskatchewan	4.4
44. Saskatoon, Saskatchewan	7.4
45. Southern Saskatchewan	8.3
46. Northern Saskatchewan	18.2
Alberta	
47. Calgary, Alberta	7.7
48. Edmonton, Alberta	7.3
49. Northern Alberta	11.5
50. Southern Alberta	7.0

Table 8**Regional unemployment rates used by the Employment Insurance program,¹ seasonally adjusted, three-month moving average**

	Effective from February 11, 2018 to March 10, 2018
Region	percent
British Columbia	
51. Southern Interior British Columbia	8.1
52. Abbotsford, British Columbia	4.5
53. Vancouver, British Columbia	4.1
54. Victoria, British Columbia	4.7
55. Southern Coastal British Columbia	6.7
56. Northern British Columbia	9.8
Territories^{3,5}	
57. Whitehorse, Yukon ⁶	3.4
58. Yukon	6.5
59. Yellowknife, Northwest Territories	2.7
60. Northwest Territories ⁷	14.8
61. Iqaluit, Nunavut	8.9
62. Nunavut ⁸	17.8

1. The boundaries of these regions are determined by Employment and Social Development Canada (ESDC). For geographic descriptions and maps of employment insurance regions, see the ESDC website: <http://srv129.services.gc.ca/eiregions/en/geocont.aspx>.

2. This region excludes St. John's.

3. Prince Edward Island as well as the territories are each comprised of two regions effective October 12, 2014.

4. This region excludes Charlottetown.

5. The monthly regional unemployment rates for EI purposes in the territories are subject to the greater of a seasonally adjusted 3-month-moving average or 12-month-moving average.

6. This region excludes Whitehorse.

7. This region excludes Yellowknife.

8. This region excludes Iqaluit.

Note: Related CANSIM table 282-0168. All regions are based on the 1996 Census boundaries, with the exception of those in Prince Edward Island and in the territories, which respect the 2011 Census boundaries.

Data quality

Definitions and explanations

The **labour force** is composed of those members of the civilian non-institutional population 15 years of age and over who, during the reference week, were employed or unemployed.

Employed persons are those who, during the reference week:

- (a) did any work at all at a job or business;
- (b) had a job but were not at work.

A person is considered to be **full-time** if his/her usual hours at the main job or only job are 30 or more hours per week. When the number of hours worked at the main job or only job is usually less than 30 hours per week then he/she is considered to be **part-time**.

Unemployed persons are those who, during the reference week:

- (a) were without work, had looked for work in the past four weeks ending with the reference period and were available for work;
- (b) were on temporary layoff due to business conditions, with an expectation of recall, and were available for work;
- (c) were without work, but had a job to start within four weeks from the reference period and were available for work.

Persons in the civilian non-institutional population 15 years of age and over who, during the reference week, were neither employed nor unemployed are classified as **not in the labour force**.

The **unemployment rate** represents the number of unemployed persons expressed as a percentage of the labour force (employed and unemployed). The unemployment rate for a particular group (for example, age, sex, or marital status) is the number unemployed in that group expressed as a percentage of the labour force for that group.

The **participation rate** represents the total labour force expressed as a percentage of the population aged 15 years and over. The participation rate for a particular group (for example, women aged 25 years and over) is the labour force in that group expressed as a percentage of the population for that group.

The **employment rate** represents the number of employed persons expressed as a percentage of the population aged 15 years and over. The employment rate for a particular group (for example, age, sex, marital status, or province) is the number employed in that group expressed as a percentage of the population for that group.

The **part-time rate** represents the number of persons employed part-time expressed as a percentage of the employed. The part-time rate for a particular group (for example, age or sex) is the number of persons employed part-time in that group expressed as a percentage of the employed for that group.

All geographic regions are based on the 2011 Census boundaries.

Seasonal adjustment

Fluctuations in economic time series are caused by seasonal, cyclical and irregular movements. A seasonally adjusted series is one from which seasonal movements have been eliminated. Seasonal movements are defined as those which are caused by regular annual events such as climate, holidays, vacation periods and cycles related to crops, production and retail sales associated with Christmas and Easter. It should be noted that the seasonally adjusted series contain irregular as well as longer-term cyclical fluctuations.

The seasonally adjusted series are revised each year to take into account current data and to generate new forecast factors for the next twelve months. The data are therefore subject to slight revisions in future issues of this publication.

For more information on seasonal adjustment, see *Seasonally adjusted data – Frequently asked questions*.

Sampling variability of estimates

Estimates in this publication are based on the Labour Force Survey, a monthly survey of approximately 56,000 households across Canada. Because the entire population is not surveyed, the estimates are subject to sampling error. While the published estimate is the best available indicator of the real value, changes in the level of any estimates between two months can be the result of a true change, or sampling variability. The sampling error can be estimated by calculating the standard error for the published estimate or statistic. These standard errors have been included in the publication tables in order to assist users in interpreting the data. They are based on 12-month averages and are updated twice a year, in February and August.

Interpretation based on standard error

Approximately two-thirds (68%) of the time, a change greater than the sampling error indicates a real change. The larger the change compared to the standard error, the better the chance that we are observing a real change, as opposed to a change due to sampling variability. At the 95% confidence level, the change in the estimate must be greater than twice the standard error in order to ensure that change is real.

Movements in estimates that are smaller than the standard error are less likely to reflect a real change and more likely to be due to sampling variability. While the above is true for monthly movements, one can have more confidence in a series of consecutive movements in the same direction, even though some of the monthly movements may be smaller than the standard error.

Interpretation based on confidence intervals

Confidence intervals provide another way of looking at the variability inherent in estimates of sample surveys. To illustrate how to calculate the confidence interval, let us say that one month the published estimate for total employment rose by 16,000 to reach 18,000,000. The associated standard error for the movement estimate is 29,500. The standard error used to interpret the movement estimate indicates that:

- There are approximately two chances in three (68%) that the real value of the movement between the two months falls within the range -13,500 to +45,500 (16,000 + or – one standard error).
- There are approximately nine chances in ten (90%) that the real value of the movement between the two months falls within the range -31,200 to +63,200 (16,000 + or – 1.6 times the standard error).
- There are approximately nineteen chances in twenty (95%) that the real value of the movement between the two months falls within the range -43,000 to +75,000 (16,000 + or – two standard errors).

For more detailed explanations on the sampling variability of estimates, and in particular for information on how to assess the variability of level estimates, consult the Data quality section of the *Guide to the Labour Force Survey* (71-543-G).

Documentation

For more detailed information about the Labour Force Survey, see the following documents:

- Overview of the Labour Force Survey (LFS) 3701
- *Guide to the Labour Force Survey* (71-543-G)
- *Methodology of the Canadian Labour Force Survey* (71-526-X)
- *LFS geographical maps*

Related products

Publications

71-526-X	Methodology of the Canadian Labour Force Survey
71-543-G	Guide to the Labour Force Survey
71-587-X	Aboriginal Peoples Living Off-reserve in Western Canada: Estimates from the Labour Force Survey
71-588-X	The Aboriginal Labour Force Analysis Series
71-606-X	The Immigrant Labour Force Analysis Series
71F0031X	Improvements to the Labour Force Survey (LFS)
71M0001X	Labour Force Survey Microdata File
75-004-M	Labour Statistics: Research Papers
75-005-M	Labour Statistics: Technical Papers

CANSIM tables

279-0029	Labour Force Survey estimates (LFS), work absence statistics of full-time employees by province, census metropolitan area (CMA) and sex, annual
279-0030	Labour Force Survey estimates (LFS), work absence statistics of full-time employees by sex and North American Industry Classification System (NAICS), annual
279-0032	Labour Force Survey estimates (LFS), work absence statistics of full-time employees by sex and age group, annual
279-0033	Labour Force Survey estimates (LFS), work absence statistics of full-time employees by sex and presence of children, annual
279-0034	Labour Force Survey estimates (LFS), work absence statistics of full-time employees by sex and job tenure, annual
279-0035	Labour Force Survey estimates (LFS), work absence statistics of full-time employees by sex and public and private sector, annual
279-0036	Labour Force Survey estimates (LFS), work absence statistics of full-time employees by sex and educational attainment, annual
279-0037	Labour Force Survey estimates (LFS), work absence statistics of full-time employees by sex and establishment size, annual
279-0038	Labour Force Survey estimates (LFS), work absence statistics of full-time employees by sex and job permanency, annual
279-0039	Labour Force Survey estimates (LFS), work absence statistics of full-time employees by sex and union coverage, annual
279-0040	Labour Force Survey estimates (LFS), work absence statistics of full-time employees by sex and National Occupational Classification (NOC), annual
282-0001	Labour Force Survey estimates (LFS), by sex and detailed age group, unadjusted for seasonality, monthly
282-0002	Labour Force Survey estimates (LFS), by sex and detailed age group, annual
282-0003	Labour Force Survey estimates (LFS), by educational attainment, sex and age group, unadjusted for seasonality, monthly
282-0004	Labour Force Survey estimates (LFS), by educational attainment, sex and age group, annual
282-0005	Labour Force Survey estimates (LFS), by full- and part-time students during school months, sex and age group, unadjusted for seasonality, monthly
282-0006	Labour Force Survey estimates (LFS), by students during summer months, sex and age group, unadjusted for seasonality, monthly
282-0007	Labour Force Survey estimates (LFS), by North American Industry Classification System (NAICS), sex and age group, unadjusted for seasonality, monthly
282-0008	Labour Force Survey estimates (LFS), by North American Industry Classification System (NAICS), sex and age group, annual
282-0011	Labour Force Survey estimates (LFS), employment by class of worker, North American Industry Classification System (NAICS) and sex, unadjusted for seasonality, monthly
282-0012	Labour Force Survey estimates (LFS), employment by class of worker, North American Industry Classification System (NAICS) and sex, annual
282-0013	Labour Force Survey estimates (LFS), part-time employment by reason for part-time work, sex and age group, unadjusted for seasonality, monthly
282-0014	Labour Force Survey estimates (LFS), part-time employment by reason for part-time work, sex and age group, annual
282-0015	Labour Force Survey estimates (LFS), by usual hours worked, main or all jobs, sex and age group, unadjusted for seasonality, monthly
282-0016	Labour Force Survey estimates (LFS), by usual hours worked, main or all jobs, sex and age group, annual
282-0017	Labour Force Survey estimates (LFS), by actual hours worked, main or all jobs, sex and age group, unadjusted for seasonality, monthly
282-0018	Labour Force Survey estimates (LFS), by actual hours worked, main or all jobs, sex and age group, annual
282-0019	Labour Force Survey estimates (LFS), by usual hours worked, class of worker, North American Industry Classification System (NAICS) and sex, unadjusted for seasonality, monthly
282-0020	Labour Force Survey estimates (LFS), by usual hours worked, class of worker, North American Industry Classification System (NAICS) and sex, annual
282-0021	Labour Force Survey estimates (LFS), by actual hours worked, class of worker, North American Industry Classification System (NAICS) and sex, unadjusted for seasonality, monthly
282-0022	Labour Force Survey estimates (LFS), by actual hours worked, class of worker, North American Industry Classification System (NAICS) and sex, annual
282-0027	Labour Force Survey estimates (LFS), by total and average usual and actual hours worked, main or all jobs, type of work, sex and age group, unadjusted for seasonality, monthly
282-0028	Labour Force Survey estimates (LFS), by total and average usual and actual hours worked, main or all jobs, type of work, sex and age group, annual
282-0031	Labour Force Survey estimates (LFS), multiple jobholders by North American Industry Classification System (NAICS), sex and age group, annual
282-0032	Labour Force Survey estimates (LFS), multiple jobholders by North American Industry Classification System (NAICS), sex and age group, unadjusted for seasonality, monthly

CANSIM tables

282-0035	Labour Force Survey estimates (LFS), multiple jobholders by usual hours worked at main and all jobs, unadjusted for seasonality, monthly
282-0036	Labour Force Survey estimates (LFS), multiple jobholders by usual hours worked at main and all jobs, annual
282-0037	Labour Force Survey estimates (LFS), job tenure by type of work, sex and age group, unadjusted for seasonality, monthly
282-0038	Labour Force Survey estimates (LFS), job tenure by type of work, sex and age group, annual
282-0041	Labour Force Survey estimates (LFS), job tenure by North American Industry Classification System (NAICS) and sex, unadjusted for seasonality, monthly
282-0042	Labour Force Survey estimates (LFS), job tenure by North American Industry Classification System (NAICS) and sex, annual
282-0047	Labour Force Survey estimates (LFS), duration of unemployment by sex and age group, unadjusted for seasonality, monthly
282-0048	Labour Force Survey estimates (LFS), duration of unemployment by sex and age group, annual
282-0049	Labour Force Survey estimates (LFS), unemployment by type of work sought and search method, sex and age group, unadjusted for seasonality, monthly
282-0050	Labour Force Survey estimates (LFS), unemployment by type of work sought and search method, sex and age group, annual
282-0051	Labour Force Survey estimates (LFS), retirement age by class of worker and sex, annual
282-0071	Labour Force Survey estimates (LFS), wages of employees by type of work, North American Industry Classification System (NAICS), sex and age group, unadjusted for seasonality, monthly
282-0072	Labour Force Survey estimates (LFS), wages of employees by type of work, North American Industry Classification System (NAICS), sex and age group, annual
282-0073	Labour Force Survey estimates (LFS), wages of employees by job permanency, union coverage, sex and age group, unadjusted for seasonality, monthly
282-0074	Labour Force Survey estimates (LFS), wages of employees by job permanency, union coverage, sex and age group, annual
282-0075	Labour Force Survey estimates (LFS), employees by establishment size, North American Industry Classification System (NAICS), sex and age group, unadjusted for seasonality, monthly
282-0076	Labour Force Survey estimates (LFS), employees by establishment size, North American Industry Classification System (NAICS), sex and age group, annual
282-0077	Labour Force Survey estimates (LFS), employees by union coverage, North American Industry Classification System (NAICS), sex and age group, unadjusted for seasonality, monthly
282-0078	Labour Force Survey estimates (LFS), employees by union coverage, North American Industry Classification System (NAICS), sex and age group, annual
282-0079	Labour Force Survey estimates (LFS), employees by job permanency, North American Industry Classification System (NAICS), sex and age group, unadjusted for seasonality, monthly
282-0080	Labour Force Survey estimates (LFS), employees by job permanency, North American Industry Classification System (NAICS), sex and age group, annual
282-0083	Labour Force Survey estimates (LFS), employees working overtime (weekly) by North American Industry Classification System (NAICS), sex and age group, unadjusted for seasonality, monthly
282-0084	Labour Force Survey estimates (LFS), employees working overtime (weekly) by North American Industry Classification System (NAICS), sex and age group, annual
282-0085	Labour Force Survey estimates (LFS), supplementary unemployment rates by sex and age group, unadjusted for seasonality, monthly
282-0086	Labour Force Survey estimates (LFS), supplementary unemployment rates by sex and age group, annual
282-0087	Labour Force Survey estimates (LFS), by sex and age group, seasonally adjusted and unadjusted, monthly
282-0088	Labour Force Survey estimates (LFS), employment by North American Industry Classification System (NAICS), seasonally adjusted and unadjusted, monthly
282-0089	Labour Force Survey estimates (LFS), employment by class of worker and sex, seasonally adjusted and unadjusted, monthly
282-0092	Labour Force Survey estimates (LFS), actual hours worked at main job by North American Industry Classification System (NAICS), seasonally adjusted, monthly
282-0094	Labour Force Survey estimates (LFS), by North American Industry Classification System (NAICS), Canada, seasonally adjusted, monthly
282-0095	Labour Force Survey estimates (LFS), by full- and part-time students during school months, sex and age group, annual
282-0100	Labour Force Survey estimates (LFS), by territories, sex and age group, three-month moving average, seasonally adjusted and unadjusted, monthly
282-0101	Labour Force Survey estimates (LFS), by immigrant status, age group, Canada, regions, provinces and Montreal, Toronto, Vancouver census metropolitan areas, three-month moving average, unadjusted for seasonality, monthly
282-0102	Labour Force Survey estimates (LFS), by immigrant status, age group, Canada, regions, provinces and Montreal, Toronto, Vancouver census metropolitan areas, annual
282-0103	Labour Force Survey estimates (LFS), by immigrant status, sex and detailed age group, Canada, three-month moving average, unadjusted for seasonality, monthly
282-0104	Labour Force Survey estimates (LFS), by immigrant status, sex and detailed age group, Canada, annual
282-0105	Labour Force Survey estimates (LFS), by immigrant status, educational attainment, sex and age group, Canada, three-month moving average, unadjusted for seasonality, monthly
282-0106	Labour Force Survey estimates (LFS), by immigrant status, educational attainment, sex and age group, Canada, annual
282-0107	Labour Force Survey estimates (LFS), by immigrant status, country of birth, sex and age group, Canada, three-month moving average, unadjusted for seasonality, monthly
282-0108	Labour Force Survey estimates (LFS), by immigrant status, country of birth, sex and age group, Canada, annual
282-0122	Labour Force Survey estimates (LFS), by provinces and economic regions based on 2011 Census boundaries, three-month moving average, unadjusted for seasonality, monthly

CANSIM tables

282-0123	Labour Force Survey estimates (LFS), by provinces, territories and economic regions based on 2011 Census boundaries, annual
282-0124	Labour Force Survey estimates (LFS), employment by economic region based on 2011 Census boundaries and North American Industry Classification System (NAICS), three-month moving average, unadjusted for seasonality, monthly
282-0125	Labour Force Survey estimates (LFS), employment by economic region based on 2011 Census boundaries and North American Industry Classification System (NAICS), annual
282-0128	Labour Force Survey estimates (LFS), by census metropolitan area based on 2011 Census boundaries, sex and age group, three-month moving average, unadjusted for seasonality, monthly
282-0129	Labour Force Survey estimates (LFS), by census metropolitan area based on 2011 Census boundaries, sex and age group, annual
282-0130	Labour Force Survey estimates (LFS), employment by census metropolitan area based on 2011 Census boundaries and North American Industry Classification System (NAICS), three-month moving average, unadjusted for seasonality, monthly
282-0131	Labour Force Survey estimates (LFS), employment by census metropolitan area based on 2011 Census boundaries and North American Industry Classification System (NAICS), annual
282-0134	Labour Force Survey estimates (LFS), by selected census agglomerations based on 2011 Census boundaries, annual
282-0135	Labour Force Survey estimates (LFS), by census metropolitan area based on 2011 Census boundaries, three-month moving average, seasonally adjusted and unadjusted, monthly
282-0136	Labour Force Survey estimates (LFS), by Montréal, Toronto and Vancouver census metropolitan areas based on 2011 Census boundaries, seasonally adjusted and unadjusted, monthly
282-0137	Labour Force Survey estimates (LFS), by population centres and rural areas based on 2011 Census boundaries, sex and age group, unadjusted for seasonality, monthly
282-0138	Labour Force Survey estimates (LFS), by population centres and rural areas based on 2011 Census boundaries, sex and age group, annual
282-0139	Labour Force Survey estimates (LFS), employment by population centres and rural areas based on 2011 Census boundaries, class of worker and North American Industry Classification System (NAICS), unadjusted for seasonality, monthly
282-0140	Labour Force Survey estimates (LFS), employment by population centres and rural areas based on 2011 Census boundaries, class of worker and North American Industry Classification System (NAICS), annual
282-0141	Labour Force Survey estimates (LFS), by National Occupational Classification (NOC) and sex, unadjusted for seasonality, monthly
282-0142	Labour Force Survey estimates (LFS), by National Occupational Classification (NOC) and sex, annual
282-0143	Labour Force Survey estimates (LFS), by usual hours worked, National Occupational Classification (NOC) and sex, unadjusted for seasonality, monthly
282-0144	Labour Force Survey estimates (LFS), by usual hours worked, National Occupational Classification (NOC) and sex, annual
282-0145	Labour Force Survey estimates (LFS), by actual hours worked, National Occupational Classification (NOC) and sex, unadjusted for seasonality, monthly
282-0146	Labour Force Survey estimates (LFS), by actual hours worked, National Occupational Classification (NOC) and sex, annual
282-0147	Labour Force Survey estimates (LFS), multiple jobholders by National Occupational Classification (NOC), sex and age group, unadjusted for seasonality, monthly
282-0148	Labour Force Survey estimates (LFS), multiple jobholders by National Occupational Classification (NOC), sex and age group, annual
282-0149	Labour Force Survey estimates (LFS), job tenure by National Occupational Classification (NOC) and sex, unadjusted for seasonality, monthly
282-0150	Labour Force Survey estimates (LFS), job tenure by National Occupational Classification (NOC) and sex, annual
282-0151	Labour Force Survey estimates (LFS), wages of employees by type of work, National Occupational Classification (NOC), sex, and age group, unadjusted for seasonality, monthly
282-0152	Labour Force Survey estimates (LFS), wages of employees by type of work, National Occupational Classification (NOC), sex, and age group, annual
282-0153	Labour Force Survey estimates (LFS), employees working overtime (weekly) by National Occupational Classification (NOC), sex and age group, unadjusted for seasonality, monthly
282-0154	Labour Force Survey estimates (LFS), employees working overtime (weekly) by National Occupational Classification (NOC), sex and age group, annual
282-0155	Labour Force Survey estimates (LFS), employment by National Occupational Classification (NOC), seasonally adjusted, monthly
282-0156	Labour Force Survey estimates (LFS), employment by economic region based on 2011 Census boundaries and National Occupational Classification (NOC), three-month moving average, unadjusted for seasonality, monthly
282-0157	Labour Force Survey estimates (LFS), employment by economic region based on 2011 Census boundaries and National Occupational Classification (NOC), annual
282-0158	Labour Force Survey estimates (LFS), employment by census metropolitan area based on 2011 Census boundaries and National Occupational Classification (NOC), three-month moving average, unadjusted for seasonality, monthly
282-0159	Labour Force Survey estimates (LFS), employment by census metropolitan area based on 2011 Census boundaries and National Occupational Classification (NOC), annual
282-0160	Labour Force Survey estimates (LFS), weekly wage distributions of employees by type of work, National Occupational Classification (NOC) and sex, unadjusted for seasonality, monthly
282-0161	Labour Force Survey estimates (LFS), weekly wage distributions of employees by type of work, National Occupational Classification (NOC) and sex, annual
282-0162	Labour Force Survey estimates (LFS), hourly wage distribution of employees by type of work, National Occupational Classification (NOC) and sex, unadjusted for seasonality, monthly
282-0163	Labour Force Survey estimates (LFS), hourly wage distribution of employees by type of work, National Occupational Classification (NOC) and sex, annual
282-0164	Labour Force Survey estimates (LFS), employees by union status and National Occupational Classification (NOC), Canada, annual

CANSIM tables

282-0165	Labour Force Survey estimates (LFS), employment by Aboriginal group, National Occupational Classification (NOC), sex and age group, annual
282-0166	Labour Force Survey estimates (LFS), employment by Aboriginal group, National Occupational Classification (NOC) and age group, Canada, selected provinces and regions, annual
282-0167	Labour Force Survey estimates (LFS), average usual hours and wages of employees by age group, sex, union coverage, job permanency, and National Occupational Classification (NOC), unadjusted for seasonality, monthly
282-0168	Labour Force Survey estimates (LFS), regional unemployment rates used by the Employment Insurance Program, three-month moving average, seasonally adjusted, monthly
282-0200	Labour Force Survey estimates (LFS), weekly wage distributions of employees by type of work, North American Industry Classification System (NAICS), and sex, unadjusted for seasonality, monthly
282-0201	Labour Force Survey estimates (LFS), weekly wage distributions of employees by type of work, North American Industry Classification System (NAICS), and sex, annual
282-0204	Labour Force Survey estimates (LFS), hourly wage distributions of employees by type of work, North American Industry Classification System (NAICS), and sex, unadjusted for seasonality, monthly
282-0205	Labour Force Survey estimates (LFS), hourly wage distributions of employees by type of work, North American Industry Classification System (NAICS), and sex, annual
282-0208	Labour Force Survey estimates (LFS), by educational degree, sex and age group, unadjusted for seasonality, monthly
282-0209	Labour Force Survey estimates (LFS), by educational degree, sex and age group, annual
282-0210	Labour Force Survey estimates (LFS), by family type and family age composition, unadjusted for seasonality, monthly
282-0211	Labour Force Survey estimates (LFS), by family type and family age composition, annual
282-0212	Labour Force Survey estimates (LFS), hours lost by employees by reason of absence, full and part week and sex, unadjusted for seasonality, monthly
282-0213	Labour Force Survey estimates (LFS), hours lost by employees by reason of absence, full and part week and sex, annual
282-0214	Labour Force Survey estimates (LFS), activity prior to unemployment by sex and age group, unadjusted for seasonality, monthly
282-0215	Labour Force Survey estimates (LFS), activity prior to unemployment, by sex and age group, annual
282-0216	Labour Force Survey estimates (LFS), reason for leaving job during previous year by sex and age group, unadjusted for seasonality, monthly
282-0217	Labour Force Survey estimates (LFS), reason for leaving job during previous year by sex and age group, annual
282-0218	Labour Force Survey estimates (LFS), reason for not looking for work, by sex and age group, unadjusted for seasonality, monthly
282-0219	Labour Force Survey estimates (LFS), reason for not looking for work, by sex and age group, annual
282-0220	Labour Force Survey estimates (LFS), employees by union status, sex and age group, Canada and provinces, annual
282-0221	Labour Force Survey estimates (LFS), employees by union status, sex, age group and education level, Canada, annual
282-0223	Labour Force Survey estimates (LFS), employees by union status, North American Industry Classification System (NAICS) and sex, Canada, annual
282-0224	Labour Force Survey estimates (LFS), employees by union status, establishment size, job tenure, type of work and job permanency, Canada, annual
282-0225	Labour Force Survey estimates (LFS), average weekly earnings, average hourly wage rate and average usual weekly hours by union status and type of work, Canada and provinces, annual
282-0226	Labour Force Survey estimates (LFS), by Aboriginal group, sex and age group, Canada, selected provinces and regions, annual
282-0227	Labour Force Survey estimates (LFS), by detailed Aboriginal group, sex and age group, Canada and selected regions, annual
282-0228	Labour Force Survey estimates (LFS), by Aboriginal group, educational attainment and age group, Canada and selected regions, annual
282-0229	Labour Force Survey estimates (LFS), employment by Aboriginal group, North American Industry Classification System (NAICS), sex and age group, annual
282-0230	Labour Force Survey estimates (LFS), employment by Aboriginal group, North American Industry Classification System (NAICS) and age group, Canada and selected regions, annual
282-0233	Labour Force Survey estimates (LFS), average hourly and weekly wages and average usual weekly hours by Aboriginal group and age group, Canada, selected provinces and regions, annual

Survey

3701	Labour Force Survey
------	---------------------

Summary tables

Average hourly wages of employees by selected characteristics and occupation, unadjusted data, by province (monthly)

Days lost per worker by industry and sex

People employed, by educational attainment

Reasons for part-time work by sex and age group

Self-employment, historical summary

Employment by age, sex, type of work, class of worker and province (monthly)

Actual hours worked per week by industry, seasonally adjusted (monthly)

Labour force characteristics, unadjusted, by territory (3 month moving average)

Employment by industry and sex

Full-time and part-time employment by sex and age group

Labour force characteristics by age and sex

Labour force characteristics by immigrant status of population aged 25 to 54, and by educational attainment

Labour force characteristics by immigrant status, by detailed age group

Labour force characteristics by immigrant status of population aged 25 to 54, by country of birth

Days lost per worker due to illness or disability, by sex, by province

Employment by industry

Labour force characteristics, seasonally adjusted, by province (monthly)

Labour force characteristics, unadjusted, by province (monthly)

Labour force, employment and unemployment, levels and rates, by province

Economic indicators, by province and territory (monthly and quarterly)

Days lost per worker by reason, by provinces

Labour force characteristics, seasonally adjusted, by census metropolitan area (3 month moving average)

Labour force characteristics, unadjusted, by economic region (3 month moving average)

Distribution of employed people, by industry, by province

Employment by major industry group, seasonally adjusted, by province (monthly)

Labour force characteristics

Labour force characteristics, unadjusted, by census metropolitan area (3 month moving average)

Labour force characteristics, population 15 years and older, by census metropolitan area

Labour force characteristics, population 15 years and older, by economic region, by province

Canada: Economic and financial data

Labour force characteristics by sex and age group

Labour force characteristics by immigrant status of population aged 25 to 54, by province

Latest statistics (monthly)
