

84D01

PUBLISHED BY AUTHORITY OF THE HON. W.D. EULER, M.P. STATISTICS

MINISTER OF TRADE AND COMMERCE

DOMINION BUREAU OF STATISTICS - CANADA
VITAL STATISTICS BRANCH

OCT 21 1938

RECEIVED BY THE
LIBRARY

Dominion Statistician: R.H. Coats, LL.D., F.R.S.C., F.S.S. (Hon.)
Chief, Vital Statistics: W.R. Tracey, B.A.,

BIRTHS, DEATHS AND MARRIAGES IN THE SECOND QUARTER OF 1938.

Live births in Canada during the second quarter of 1938 numbered 57,480 (preliminary figures) giving an equivalent annual rate of 20.6 per 1,000 population as compared with 58,814 births and a rate of 21.2 for the second quarter of 1937. There were 2,392 illegitimate births forming 4.2 per cent of all live births, as compared with 2,450 and the same rate. Stillbirths amounted to 1,551 or 2.6 per cent of all births as against 1,665 and a rate of 2.8 per cent.

Deaths totalled 26,234 with a rate of 9.4 per 1,000 population as compared with 27,937 and a rate of 10.1.

The natural increase for the quarter was 31,246, giving a rate of 11.2 per 1,000 population, as against 30,877 or a rate of 11.1.

Deaths under one year of age numbered 3,555 and the infant mortality rate was 62 per 1,000 live births. These figures compared with 3,842 deaths and a rate of 65 in the corresponding period of 1937. Deaths under one month of age numbered 1,900 giving a rate of 33 per 1,000 live births as against 2,068 and a rate of 35. There were 235 maternal deaths as compared with 318 and the rate was 4.1 as against 5.4 per 1,000 live births.

The number of deaths assigned to certain causes in the second quarter of 1938 was as follows (the figures for the corresponding period of 1937 being given in parenthesis in each case): Typhoid and paratyphoid fever 39 (42); Small-pox - (1); Measles, 62 (253); Scarlet fever, 41 (67); Whooping-cough, 128 (176); Diphtheria, 73 (49); Influenza, 544 (981); Infantile paralysis, 11 (12); Tuberculosis 1,651 (1,918); Cancer, 2,908 (2,990); Cerebral haemorrhage, cerebral embolism and thrombosis; 463 (483); Diseases of the heart, 4,280 (4,210); Diseases of the arteries, 2,534 (2,435); Pneumonia, 1,828 (1,965); Diarrhoea and enteritis, 492 (482); Nephritis, 1,698 (1,714); Suicide, 260 (265); Homicide, 36 (32); Automobile accidents, 304 (363); Other violent deaths, 1,099 (1,147),

There were 23,887 marriages giving a rate of 8.6 as against 22,964 or a rate of 8.3 in the second quarter of 1937.

For the first six months of 1938 the figures are as follows, with those for the corresponding period of 1937 in parentheses:- Live births, 113,025 (112,038); Birth rate, 20.4 (20.3); Illegitimate births, 4,794 (4,735); Per cent of total live births, 4.2 (4.2); Stillbirths, 3,139 (3,268); Per cent of total births, 2.7 (2.8); Deaths, 54,935 (60,184); Death rate, 9.9 (10.9); Natural increase, 58,090 (51,854); Rate of natural increase, 10.5 (9.4); Deaths under one year, 7,563 (8,471); Rate per 1,000 live births 67 (76); Deaths under one month, 3,876 (4,173); Rate per 1,000 live births, 34 (37); Maternal deaths, 484 (615); Rate per 1,000 live births, 4.3 (5.5); Marriages, 36,632 (35,756); Marriage rate, 6.6 (6.5).

Deaths from certain causes for the six months were as follows: Typhoid and paratyphoid fever, 100 (84); Smallpox, 1 (2); Measles, 164 (566); Scarlet fever, 120 (153); Whooping-cough, 287 (371); Diphtheria, 194 (125); Influenza, 1,614 (4,374); Infantile paralysis, 24 (21); Tuberculosis, 3,204 (3,704); Cancer, 5,802 (5,932); Cerebral haemorrhage, embolism and thrombosis, 1,009 (1,045); Diseases of the heart, 9,064 (8,900); Diseases of the arteries, 5,126 (5,126); Pneumonia, 4,428 (4,842); Diarrhoea and enteritis, 951 (877); Nephritis, 3,447 (3,553); Suicide, 483 (490); Homicide, 71 (72); Automobile accidents, 537 (589); Other violent deaths, 2,104 (2,101).

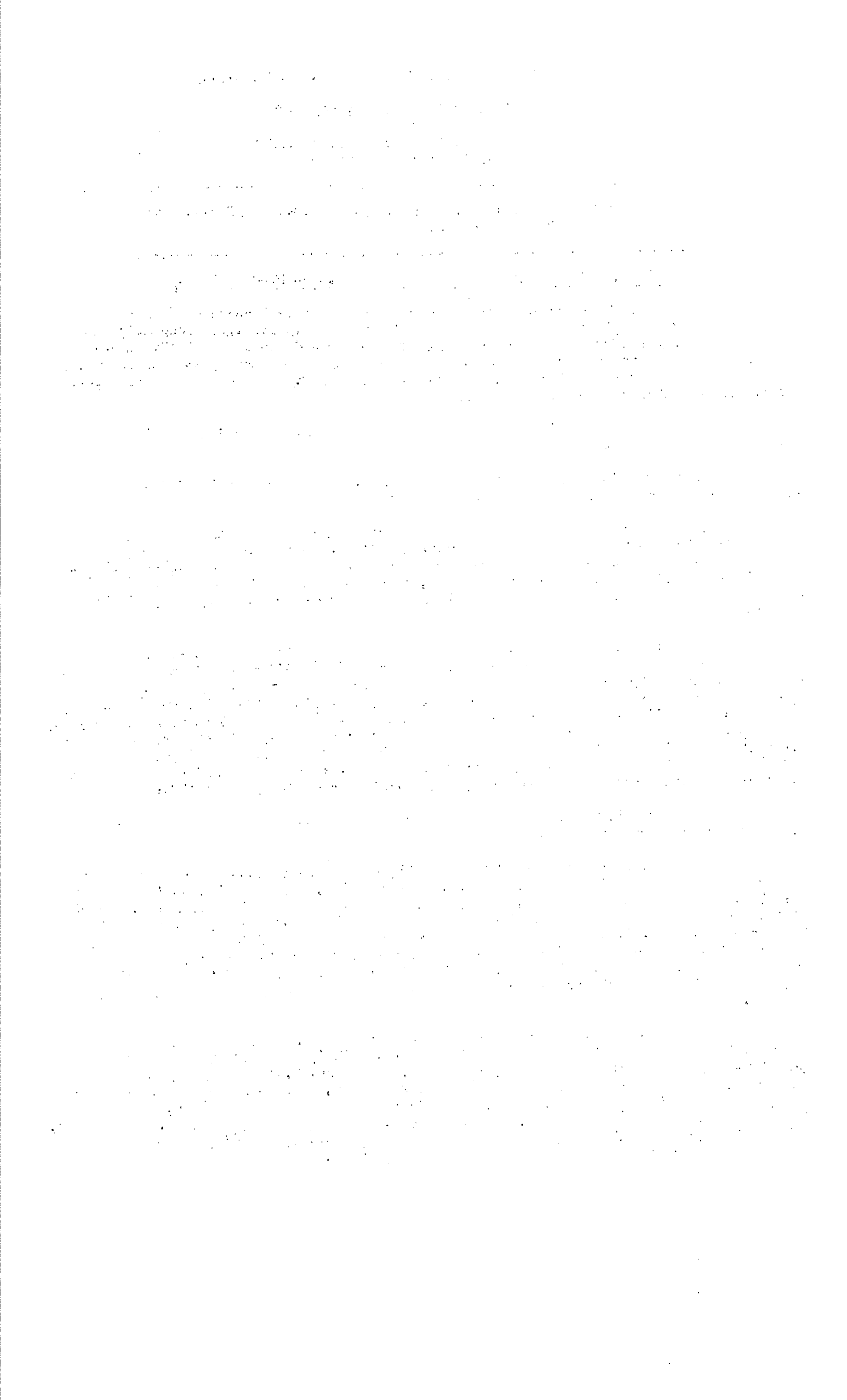


TABLE I.

Summary of births, deaths and marriages by provinces,
during the second quarter of 1938.

	CANADA (1)	Prince Edward Island	Nova Scotia	New Brunswick	Quebec	Ontario	Manitoba	Saskatchewan	Alberta	British Columbia
Live births	57,480	525	2,750	3,058	20,011	16,693	3,383	4,083	3,868	3,109
Legitimate	55,088	500	2,568	2,932	19,309	15,879	3,232	3,966	3,709	2,993
Illegitimate	2,392	25	182	126	702	814	151	117	159	116
Stillbirths	1,551	19	56	79	614	481	83	75	88	56
Deaths (exclusive of stillbirths)	26,234	227	1,211	1,211	8,352	9,246	1,442	1,334	1,385	1,826
Deaths under 1 year of age	3,555	24	156	199	1,706	803	181	172	180	134
Deaths under 1 month of age	1,900	14	91	124	807	495	93	96	104	76
Deaths from puerperal causes	235	1	4	14	105	61	12	7	23	8
Marriages	23,887	112	975	854	7,506	8,578	1,558	1,154	1,501	1,649

(1) Exclusive of Yukon and the Northwest Territories.

TABLE 2.

Infant mortality (under one year) from certain causes in Canada in the second quarter of 1938, compared with the second quarter of 1937.

Int. list No.	Causes of death	Number of deaths		Rate per 100,000 live births	
		1938	1937	1938	1937
7	Measles	19	83	33	141
8	Scarlet fever	4	3	7	5
9	Whooping-cough	84	108	146	184
10	Diphtheria	4	3	7	5
11	Influenza	128	174	223	296
15	Erysipelas	5	6	9	10
23-32	Tuberculosis	40	37	70	63
34	Syphilis	26	57	45	97
79	Simple meningitis	22	32	38	54
86	Convulsions	31	51	54	87
106	Bronchitis	10	19	17	32
107-109	Pneumonia	473	487	823	828
116-118	Diseases of the stomach	24	24	42	41
119	Diarrhoea and enteritis	330	328	574	558
122	Hernia intestinal obstruction	11	18	19	31
157	Congenital malformations	326	307	567	522
158	Congenital debility	313	314	545	534
159	Premature birth	847	924	1,474	1,571
160	Injury at birth	251	221	437	376
161	Other diseases peculiar to early infancy	294	332	511	564
	Other specified causes	291	260	506	442
199,200	Unspecified or ill-defined causes	22	54	38	92
	All causes	3,555	3,842	6,185	6,532

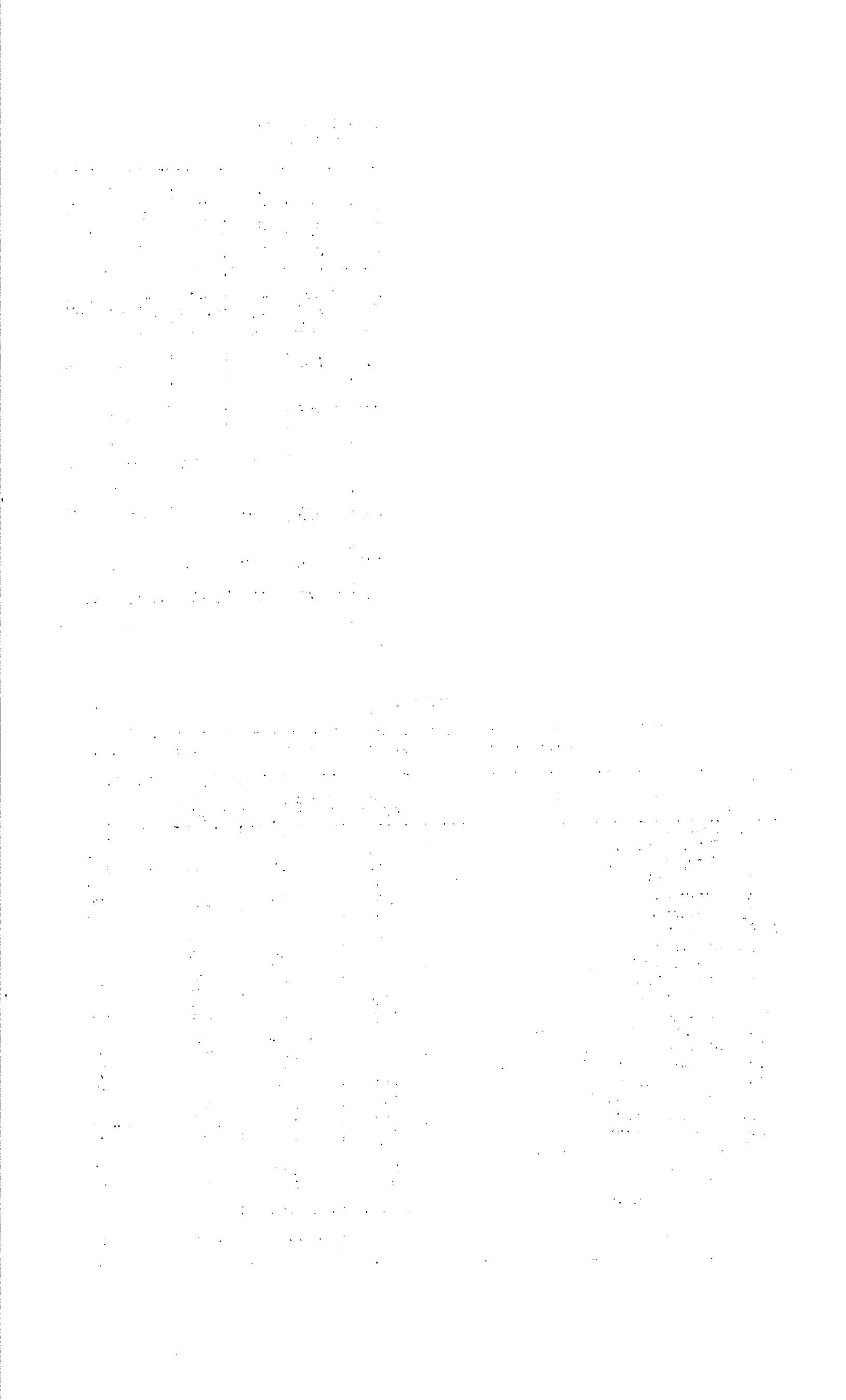


TABLE 3.

Neo-natal mortality (under one month) from certain causes in Canada in the second quarter of 1938, compared with the second quarter of 1937.

Int. List No.	Causes of death	Number of deaths		Rate per 100,000 live births	
		1938	1937	1938	1937
7	Measles	-	4	-	7
8	Scarlet fever	-	-	-	-
9	Whooping-cough	6	5	10	9
10	Diphtheria	-	1	-	2
11	Influenza	15	27	26	46
15	Erysipelas	2	2	3	3
23-32	Tuberculosis	-	1	-	2
34	Syphilis	5	15	9	26
79	Simple meningitis	3	6	5	10
86	Convulsions	11	22	19	37
106	Bronchitis	1	4	2	7
107-109	Pneumonia	49	68	85	116
116-118	Diseases of the stomach	8	8	14	14
119	Diarrhoea and enteritis	51	48	89	82
122	Hernia intestinal obstruction	-	-	-	-
157	Congenital malformations	204	190	355	323
158	Congenital debility	234	242	407	411
159	Premature birth	773	846	1,345	1,438
160	Injury at birth	242	215	421	366
161	Other diseases peculiar to early infancy	238	271	414	461
	Other specified causes	53	72	92	122
199,200	Unspecified or ill-defined causes	5	21	9	36
	All causes	1,900	2,068	3,305	3,516

TABLE 4.

Maternal mortality from certain causes in Canada in the second quarter of 1938, compared with the second quarter of 1937.

Int. List No.	Causes of death	Number of deaths		Rate per 100,000 live births	
		1938	1937	1938	1937
140	Abortion with septic conditions	20	43	35	73
141	Abortion without mention of septic conditions (haemorrhage included)	9	5	16	9
142,143	Ectopic gestation and other accidents of pregnancy (haemorrhage excluded)	12	11	21	19
144	Puerperal haemorrhage	39	41	68	70
145	Puerperal septicaemia (not specified as consequent upon abortion)	42	78	73	133
146	Puerperal albuminuria and eclampsia	44	65	77	111
147	Other toxæmias of pregnancy	16	14	28	24
148	Puerperal phlegmasia alba dolens embolism or sudden death (not specified as septic)	26	27	45	46
149,150	Other accidents of childbirth and other or unspecified conditions of the puerperal state	27	34	47	58
	All puerperal causes	235	318	409	541

Section 1

1. The first part of the document discusses the importance of maintaining accurate records.

2. It is essential to ensure that all data is entered correctly and consistently.

3. This section outlines the procedures for data collection and analysis.

4. The following table provides a summary of the key findings from the study.

Category	Value 1	Value 2	Value 3
Group A	12.5	15.2	18.7
Group B	10.8	13.4	16.9
Group C	9.3	11.7	14.5
Group D	8.1	10.5	13.2
Group E	7.5	9.8	12.6
Group F	6.9	9.1	11.8
Group G	6.2	8.4	11.0
Group H	5.7	7.9	10.5
Group I	5.1	7.3	9.8
Group J	4.6	6.8	9.2

Section 2

5. The second part of the document focuses on the methodology used in the research.

6. A detailed description of the experimental design is provided in this section.

7. The results of the experiments are presented in the following table.

Parameter	Value 1	Value 2	Value 3
Parameter A	23.4	25.8	28.1
Parameter B	21.7	24.2	26.5
Parameter C	20.1	22.6	24.9
Parameter D	18.5	21.0	23.3
Parameter E	17.2	19.7	22.0
Parameter F	16.0	18.5	21.0
Parameter G	14.8	17.3	19.8
Parameter H	13.6	16.1	18.6
Parameter I	12.4	14.9	17.4
Parameter J	11.2	13.7	16.2

Section 3

8. The final part of the document discusses the implications of the findings.

9. It is concluded that the results have significant implications for the field.

10. Further research is needed to explore these findings in greater detail.

TABLE 5.

Deaths at all ages from certain specified causes by provinces,
during the second quarter of 1938.

Int. List No.	Causes of death	Canada (1)	Prince Edward Island	Nova Scotia	New Brunswick	Quebec	Ontario	Manitoba	Saskatchewan	Alberta	British Columbia
1,2	Typhoid fever	39	-	3	5	20	6	2	-	2	1
6	Small-pox	-	-	-	-	-	-	-	-	-	-
7	Measles	62	1	1	1	35	11	-	5	6	2
8	Scarlet fever	41	-	1	1	27	6	-	1	4	1
9	Whooping-cough	128	-	1	3	63	32	3	5	11	10
10	Diphtheria	73	-	3	2	57	2	5	2	1	1
11	Influenza	544	4	36	17	227	137	27	42	34	20
16	Infantile paralysis	11	-	-	-	3	5	-	3	-	-
23-32	Tuberculosis	1,651	25	91	106	739	326	86	60	76	142
45-53	Cancer	2,908	35	128	115	787	1,127	184	143	165	224
82	Cerebral haemorrhage, cerebral embolism and thrombosis	463	5	47	36	91	200	16	21	19	28
90-95	Diseases of the heart	4,280	24	166	166	1,056	1,849	231	230	214	344
96,97 99,102	Diseases of the arteries	2,534	21	108	114	475	1,237	156	117	112	194
107-109	Pneumonia	1,828	18	104	122	573	625	93	85	104	104
119,120	Diarrhoea and enteritis	492	3	18	16	282	81	26	22	27	17
130-132	Nephritis	1,698	21	77	53	768	487	72	71	55	94
140-150	Puerperal causes	235	1	4	14	105	61	12	7	23	8
163-171	Suicides	260	1	7	5	41	97	34	17	31	27
173-175	Homicides	36	-	-	1	5	12	3	1	6	8
	Automobile accidents	304	1	6	8	82	141	19	10	16	21
	Other violent deaths	1,099	6	36	42	277	429	68	58	63	120
	Other specified causes	7,429	57	366	354	2,604	2,363	403	426	407	449
199,200	Unspecified or ill-defined causes	119	4	8	30	35	12	2	8	9	11
	ALL CAUSES	26,234	227	1,211	1,211	8,352	9,246	1,442	1,334	1,385	1,826

(1) Exclusive of Yukon and the Northwest Territories.

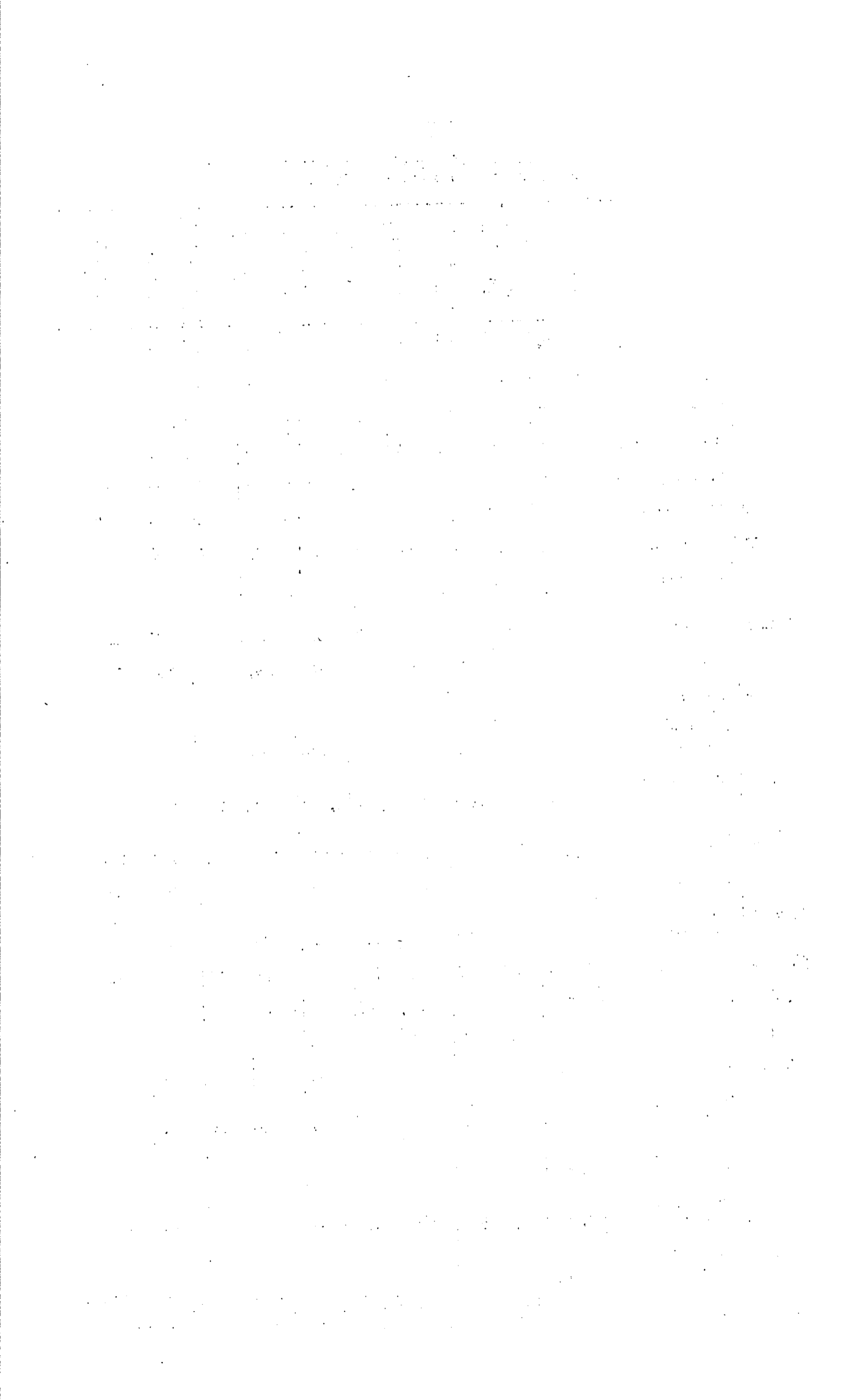


TABLE 6.

Summary of births, deaths and marriages by provinces, during the first six months of 1938.

	CANADA (1)	Prince Edward Island	Nova Scotia	New Brunswick	Quebec	Ontario	Manitoba	Saskatchewan	Alberta	British Columbia
Live births	113,025	993	5,606	5,783	39,066	32,624	6,644	8,472	7,707	6,130
Legitimate	108,231	940	5,257	5,537	37,675	31,027	6,347	8,204	7,361	5,883
Illegitimate	4,794	53	349	246	1,391	1,597	297	268	346	247
Stillbirths	3,139	34	140	172	1,172	976	165	166	189	125
Deaths (exclusive of stillbirths)	54,935	527	2,915	2,520	17,250	19,156	2,936	2,873	3,035	3,723
Deaths under 1 year of age	7,563	70	360	434	3,569	1,657	368	401	427	277
Deaths under 1 month of age	3,876	33	181	238	1,657	981	195	209	229	153
Deaths from puerperal causes	484	3	21	30	204	124	20	18	37	27
Marriages	36,632	208	1,707	1,363	10,587	13,263	2,402	1,875	2,598	2,629

(1) Exclusive of Yukon and the Northwest Territories.

TABLE 7.

Deaths at all ages from certain specified causes by provinces, during the first six months of 1938.

Int. List No.	Causes of death	CANADA (1)	Prince Edward Island	Nova Scotia	New Brunswick	Quebec	Ontario	Manitoba	Saskatchewan	Alberta	British Columbia
1,2	Typhoid fever	100	1	5	8	62	13	2	1	4	4
6	Small-pox	1	-	1	-	-	-	-	-	-	-
7	Measles	164	1	10	7	75	19	1	14	28	9
8	Scarlet fever	120	-	4	1	61	22	4	8	19	1
9	Whooping-cough	287	-	4	3	176	47	11	9	16	21
10	Diphtheria	194	-	10	10	142	8	6	9	7	2
11	Influenza	1,614	11	95	39	678	413	90	101	122	65
16	Infantile paralysis	24	-	1	1	7	7	1	4	2	1
23-32	Tuberculosis	3,204	41	189	182	1,407	636	170	138	146	295
45-53	Cancer	5,802	69	297	217	1,584	2,216	360	284	323	452
82	Cerebral haemorrhage cerebral embolism and thrombosis	1,009	11	98	86	213	422	35	45	43	56
90-95	Diseases of the heart	9,064	67	427	360	2,170	3,855	496	500	472	717
96,97, 99,102)	Diseases of the arteries	5,126	40	277	202	954	2,506	304	244	221	378
107-109	Pneumonia	4,428	73	294	294	1,312	1,479	226	232	283	235
119,120	Diarrhoea and enteritis	951	5	37	27	554	155	48	50	47	28
130-132	Nephritis	3,447	34	161	106	1,564	997	136	134	131	184
140-150	Puerperal causes	484	3	21	30	204	124	20	18	37	27
163-171	Suicides	483	1	16	13	75	188	48	32	49	61
173-175	Homicides	71	-	1	1	14	25	6	5	11	8
	Automobile accidents	537	2	19	21	114	261	27	12	31	50
	Other violent deaths	2,104	11	88	80	510	830	123	105	140	217
	Other specified causes	15,417	146	829	750	5,292	4,905	814	911	884	886
199,200	Unspecified or ill-defined causes	304	11	31	82	82	28	8	17	19	26
	ALL CAUSES	54,935	527	2,915	2,520	17,250	19,156	2,936	2,873	3,035	3,723

(1) Exclusive of Yukon and the Northwest Territories.

STATISTICS CANADA LIBRARY
BIBLIOTHÈQUE STATISTIQUE CANADA



1010483328