

84 D02

NE PAS PRÊTER
NE PAS PRÊTER

CANADA
DOMINION BUREAU OF STATISTICS
DEMOGRAPHY BRANCH

VITAL STATISTICS

DECEMBER 1921

I N D E X

	Pages
General Summary.....	1- 5
Table 1. - Births by Provinces.....	6
" 2. - Single, plural, illegitimate and still births.....	7
" 3. - Marriages.....	7
" 4. - Deaths by Provinces.....	8- 9
" 5. - Causes of Deaths.....	10-13
" 6. - Infantile and Maternal Mortality.....	14-15
" 7. - Causes of Infantile Mortality.....	16-17
" 8. - Births, Marriages and Deaths in cities and towns.....	18-22

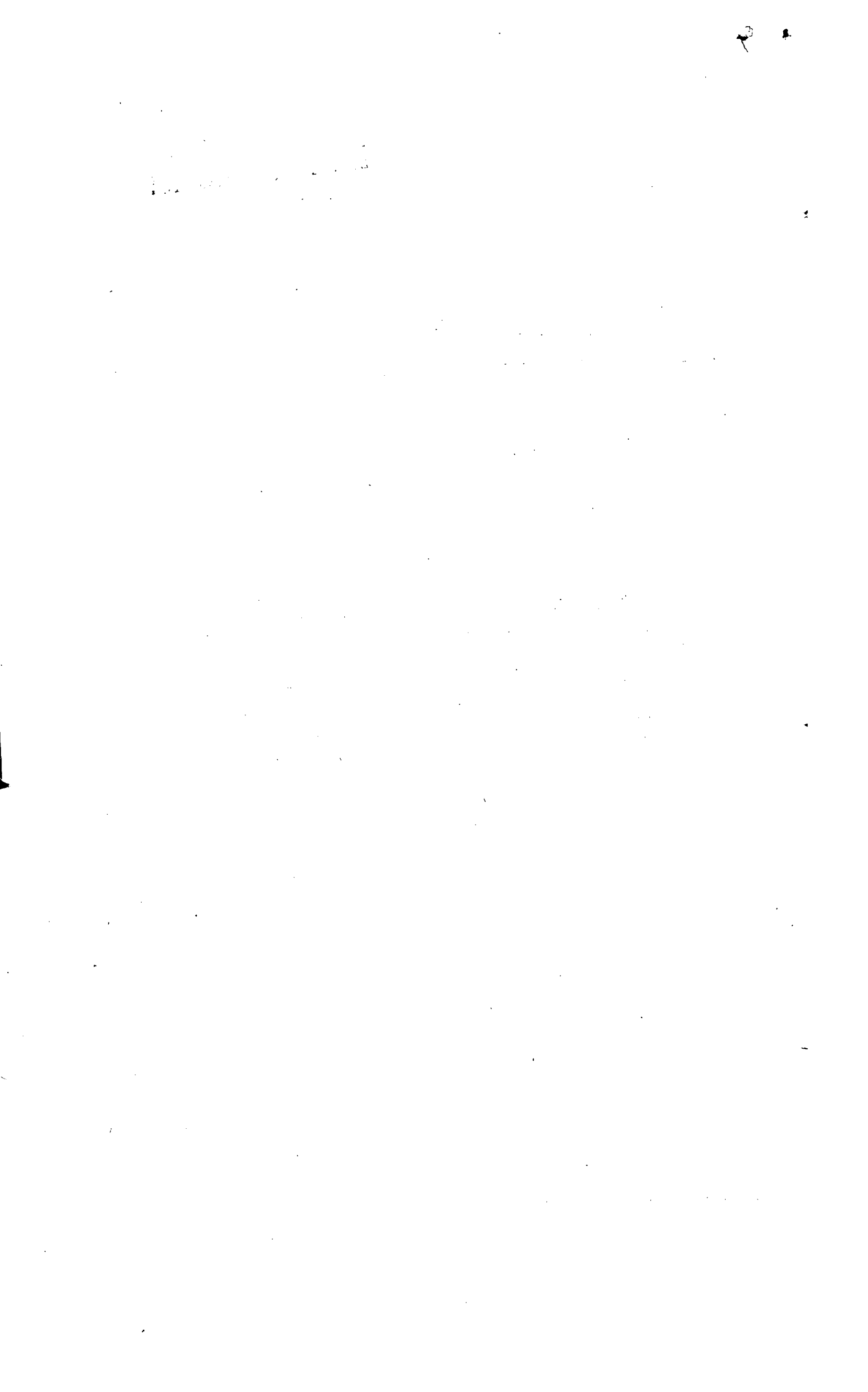
Published by Authority of the Hon. J. A. Robb, M. P.,

Minister of Trade and Commerce.

+ + +

OTTAWA

1922



FOREWORD

The Statistics of Births, Deaths and Marriages presented in this bulletin for December, 1921, are only preliminary and are subject to revision in the Annual Report. In comparing the reports by months it should be remembered that the 1920 monthly reports represent figures corrected up to the end of the year, while those for 1921 are provisional.

GENERAL SUMMARY

BIRTHS

Birth returns from the Registration Area of Canada (8 provinces) during December 1921 numbered 13,049, a crude rate of 2.0 per 1000 estimated population. This is an increase over November, when 12,253 births were registered, and also an increase over December 1920, with 12,376 births or 1.9 per 1000 estimated population.

Total births and crude rates per 1000 estimated population by provinces are shown in the following statement:

PROVINCE	Births, December, 1921		Births, December 1920	
	Totals	Rate per 1000 estimated pop	Totals	Rate per 1000 est. population
P. E. Island	160	1.7	159	1.7
Nova Scotia	1,046	2.0	980	1.9
New Brunswick	920	2.5	832	2.2
Ontario	5,673	1.9	5,501	1.9
Manitoba	1,524	2.3	1,324	2.0
Saskatchewan	1,773	2.2	1,630	2.1
Alberta	1,260	2.4	1,228	2.0
British Columbia	690	1.1	722	1.3
Totals	13,049	2.0	12,376	1.9

Plural, Illegitimate and Stillbirths

Plural Births: The birth of 151 pairs of twins and 3 sets of triplets were reported for the month in the Registration Area, or 12 per 1000 single births. In the corresponding month of 1920 there were 115 pairs of twins and 5 sets of triplets reported, or 10 per 1000 single births.

Illegitimate Births: The rates of illegitimate births to total births was 18 per 1000 living births in December as against 19 per 1000 living births in the same month in 1920.

Stillbirths: Four hundred and fifty-one stillbirths were reported for December 1921, a rate of 35 per 1000 living births as against 491 stillbirths or a rate of 40 per 1000 living births for December 1920.

MARRIAGES

December 1921 shows a total of 3,966 marriages for the eight co-operating provinces. This is a decrease of 670 over November 1921, and a decrease of 1,134 over December 1920 when there were 5,100 marriages in the same Registration Area. Additional information is given on Table III

MORTALITY

Total deaths for December 1921 in the Registration Area of the Dominion numbered 5,508, a rate of .8 per 1000 estimated population. In December 1920 there were 5,717 deaths reported from the same area, a rate of .9 per 1000 estimated population.

DEATHS IN DECEMBER 1920 and 1921.

PROVINCE	1920		1921	
	Total	Crude rate per 1000 population	Total	Crude rate per 1000 population
P. E. Island	121	1.3	100	1.1
Nova Scotia	564	1.1	514	1.0
New Brunswick	444	1.2	415	1.1
Ontario	2,836	.9	2,828	1.0
Manitoba	456	.7	429	.6
Saskatchewan	449	.6	458	.6
Alberta	460	.7	375	.6
British Columbia	377	.7	389	.6
TOTALS	5,717	.9	5,508	.8

DEATHS OCCURRING IN DECEMBER ACCORDING TO AGES OF DECEDENTS BY PROVINCES

Age Groups	Totals	PEE.	N.S.	N.B.	ONT.	MAN.	SASK.	ALTA.	B.C.
Under 1 year	1,032	12	101	70	452	118	135	82	64
1 year & under 20 yrs	649	7	49	54	269	71	83	77	34
20 yrs & under 40 yrs	658	11	58	50	297	61	51	51	69
40 yrs & under 60 yrs	964	10	58	65	501	52	71	87	110
60 yrs & over	2,194	59	248	175	1308	115	101	79	109
age not stated	11	1			1	2	2	1	3
Totals	5,508	100	514	415	2828	429	458	375	389

The deaths of 2 persons at the age of 100 were reported for December 1921. Their personal history is given in the following statement:

AGE	SEX	Civil condition	Racial origin	Birth-place	Occupation	Cause of Death	Locality
100	Male	Married	English	Ontario	Retired	Old Age	Norfolk Co.
100	Male	Widowed	Scotch	Scotland	"	Fractures	Goderich O.

Thirty-two per cent of all the deaths reported in December 1921 were caused by the six diseases listed in the following statement. In December of the previous year, 1754 or 32 per cent of the total deaths (5717) reported were from the same causes.

Disease	December 1920	December 1921
Diseases of the Heart	467	467
Pneumonia	416	384
Tuberculosis of the Lungs	303	299
Senility	389	266
Arterio Sclerosis	179	172
Broncho Pneumonia	166	166
Totals	1,920	1,754

Cancer: Deaths from cancer (all forms) in December 1921 numbered 387 as compared with 419 in November and 390 in October. In December 1920 cancer mortality was 368. In December 1921 one death in every 15 was due to cancer. In the month of November the ratio was higher being 1 death in every 12. December 1920 gave a mortality from cancer of 368 in a total death record of 5,717, or 1 in every 15 deaths due to this cause of death.

Deaths from Cancer in Registration Area, December 1921.

PROVINCE	Total December 1920	Total December 1921	Malignant tumours of the Buccal Cavity. 43	Malignant tumours of the stomach & liver 44	Malignant tumours of the peritoneum, Intestines & Rectum 45	Malignant tumours of the female genital organs 46	Malignant tumours of the breast 47	Malignant tumours of the skin 48	Malignant tumours of other unspecified organs 49
P.E.I.	9	7	1	2		2	1		1
N.S.	39	32		8	3	6	1	1	13
N.B.	30	20	2	6	2	1	1		8
Ont.	173	213	11	59	32	25	21	5	60
Man.	34	30		16	3	3	2		6
Sask.	24	29	1	13	3	6	2		4
Alta.	23	21		11	2	1		1	6
B.C.	36	35	1	13	4	4	2	2	9
Totals	368	387	16	128	49	48	30	9	107

TUBERCULOSIS

An increase of forty-one (41) deaths from tuberculosis over November 1921 and an increase of fourteen (14) deaths over December 1920 is reported for the Registration Area of Canada for December 1921. During December there were 374 deaths from Tuberculosis (all forms). The mortality from Tuberculosis, classified according to the International Classification, is given by provinces in the following statement:

Deaths from Tuberculosis in December			Deaths from Tuberculosis in December (classified)		
	1920	1921		1920	1921
P.E. Island	8	1	Tuberculosis:-		
Nova Scotia	63	43	of the Lungs	303	299
New Brunswick	21	25	Abdominal	12	20
Ontario	150	165	of the Meninges	20	23
Manitoba	31	35	Spinal	5	8
Saskatchewan	24	33	of the Joints	2	4
Alberta	31	24	disseminated	5	12
British Columbia	32	38	of other organs	13	8
Totals	360	374	Totals	360	374

INFANTILE MORTALITY

There were 1,032 deaths of children under 1 year of age reported in the Registration area during December 1921, as compared with 1,178 in December of the previous year, or a death rate of 79 per 1,000 living births, in December 1921 as against 95 per 1,000 living births in December 1920.

Infantile Mortality, December 1921

PROVINCE	1920	1921		
	Deaths under 1 year	Deaths under 1 year	Deaths under 1 month	Deaths under 1 week
P.E. Island	16	12	5	5
Nova Scotia	92	101	42	35
New Brunswick	105	70	38	27
Ontario	499	452	269	204
Manitoba	137	118	54	33
Saskatchewan	138	135	86	55
Alberta	137	80	45	32
British Columbia	53	64	36	28
Totals	1,178	1,032	575	419

Birth ratio of males to females in December is shown to have been as follows:

December	Males	Females	Males to 100 females
Births 1920	6,378	5,998	106
Births 1921	6,695	6,354	105
Deaths 1920	703	475	148
Deaths 1921	586	437	134
Net addition under 1 yr. 1920	5,675	5,523	103
Net addition under 1 yr. 1921	6,109	5,917	103

Of the 1,032 infants who died in the first year of life during December, 346 or 33 per cent died from one or other of the following six selected diseases. In December 1920, 37 per cent of the total mortality of children under 1 year of age was due to the same causes.

Selected Causes of death	1920				1921			
	Sept.	Oct.	Nov.	Dec.	Sept.	Oct.	Nov.	Dec.
Broncho Pneumonia	38	52	59	94	38	59	52	65
Pneumonia	40	54	40	94	31	34	46	63
Convulsions	38	61	36	37	31	38	31	49
Diarrhoea & Enteritis	749	425	139	121	579	243	115	81
Congenital Malformations	64	67	61	62	66	74	58	75
Whooping Cough	66	50	45	31	27	16	19	14
Totals	995	709	380	439	772	469	321	347

Infantile Mortality by provinces and ratio per 1000 living births for December 1921

Province	Total Deaths	Ratio per 1000 living births
P.E. Island	12	75
Nova Scotia	101	97
New Brunswick	70	76
Ontario	452	80
Manitoba	118	77
Saskatchewan	135	76
Alberta	80	63
British Columbia	64	83
Totals	1,032	79

The net addition to population in the Registration Area of Canada, by natural causes, in December 1921 was:

Total Births	13,649
Total Deaths	5,508
Net addition	7,541

Maternal Deaths: Sixty-nine (69) maternal deaths were registered for December 1921, in the Registration Area, or a rate of 5 per 1,000 living births.

TABLE 1

BIRTHS -- DECEMBER, 1921.

Births classified by Provinces for (A) Cities of over 40,000; (B) Cities or towns of 5,000 to 40,000; and (C) Remainder of Province.

Province (by Classified Areas)	Estimated population in thousands	Number of births.			Crude Monthly birth-rate (Births per 1,000 estimated population)	Sex ratio of births (Male births per 100 female births.)
		Male	Female	Total		
P.E.I.	94	82	78	160	1.7	105
A	--	--	--	---	---	---
B	14	14	10	24	1.7	140
C	80	68	68	136	1.7	100
N.S.	520	556	490	1,046	2.0	113
A	60	82	59	141	2.4	139
B	120	109	94	203	1.7	116
C	340	365	337	702	2.1	108
N.B.	375	480	440	920	2.5	109
A	60	50	28	78	1.3	179
B	27	50	45	95	3.5	111
C	288	380	367	747	2.6	104
ONT.	2,900	2,876	2,800	5,676	1.9	103
A	780	861	842	1,703	2.2	102
B	520	623	600	1,223	2.4	104
C	1,600	1,392	1,358	2,750	1.7	103
MAN.	670	776	748	1,524	2.3	104
A	200	257	257	514	2.6	100
B	50	89	71	160	3.2	125
C	420	430	420	850	2.0	102
SASK.	800	910	863	1,773	2.2	105
A	40	46	41	87	2.2	112
B	60	98	75	173	2.9	131
C	700	766	747	1,513	2.2	103
ALTA	650	676	584	1,260	2.4	116
A	145	198	148	346	2.3	134
B	25	34	30	64	2.6	113
C	480	444	406	850	1.8	109
B.C.	610	339	351	690	1.1	97
A	175	129	139	268	1.5	93
B	35	28	37	65	1.9	76
C	400	182	175	357	.9	104
TOTALS	6,619	6,695	6,354	13,049	2.0	105
A	1,460	1,623	1,514	3,137	2.1	107
B	851	1,045	962	2,007	2.4	109
C	4,308	4,027	3,878	7,905	1.8	104

TABLE 11. Births Classified as Single, Plural, Together with number of illegitimate and stillbirths. December, 1921.

PROV- INCE	Total Living Births	Single Births	Plural Births			Illegit- imate births			Stillbirths Rate per 1000 living births.
			Twins	Trip- lets	Rate per 1000 single births	No.	Rate per 1000 total births	No.	
P.E.I.	160	158	1		6	5	31	2	13
N.S.	1,046	1,023	10	1	11	28	27	32	31
N.B.	920	906	7		8	20	22	24	26
ONT.	5,676	5,538	69		12	105	18	258	45
MAN.	1,524	1,489	16	1	11	29	19	45	30
SASK.	1,773	1,726	22	1	13	16	9	45	25
ALTA.	1,260	1,224	18		15	24	19	20	23
B.C.	690	674	8		12	9	13	16	23
TOTALS	13,049	12,738	151	3	12	236	18	451	35

TABLE 111 MARRIAGES December, 1921.

PROV- INCE	Number of Marriages				Marriage Rates			
	Prov- ince	Cities over 40,000	Cities or towns 5 to 40,000	Remain- der of Prov- ince	Prov- ince	Cities over 40,000	Cities or towns 5 to 40,000	Remain- der of Prov- ince
P.E.I.	24		9	15	.26		.64	.19
N.S.	251	60	55	136	.48	1.00	.46	.4
N.B.	177	32	23	122	.47	.53	.85	.42
ONT.	1,687	639	425	623	.58	.82	.82	.39
MAN.	427	214	59	154	.64	1.07	1.18	.37
SASK.	644	86	154	404	.81	2.15	2.57	.58
ALTA.	442	196	32	214	.68	1.35	1.28	.45
B.C.	314	161	26	127	.51	.92	.74	.32
TOTALS	3,966	1,388	783	1,795	.60	.95	.92	.42

TABLE IV

DEATHS

December, 1921.

Total Deaths and Deaths in certain age groups
 Classified for (A) Cities of over 40,000;
 (B) Cities and towns of 5,000 to 40,000, and
 (C) Remainder of province.

PROVINCE		Estimated population in thousands	Number of deaths exclusive of stillbirths	Crude monthly death rate per 1,000 estimated population.
P.E.I.		94	100	1.1
	A			
	B	14	24	1.7
	C	80	76	1.0
N.S.		520	514	1.0
	A	60	84	1.4
	B	120	90	.8
	C	340	340	1.0
N.B.		375	415	1.1
	A	60	53	.9
	B	27	35	1.3
	C	288	327	1.1
ONT.		2,900	2,828	1.0
	A	780	842	1.1
	B	520	647	1.2
	C	1,600	1,339	.8
MAN.		670	429	.6
	A	200	160	.8
	B	50	65	1.3
	C	420	204	.5
SASK.		800	458	.6
	A	40	21	.5
	B	60	52	.9
	C	700	385	.6
ALTA.		650	375	.6
	A	145	117	.8
	B	25	27	1.1
	C	480	231	.5
B.C.		610	389	.6
	A	175	165	.9
	B	35	45	1.3
	C	400	179	.4
TOTALS		6,619	5,508	.8
	A	1,460	1,442	1.0
	B	851	985	1.2
	C	4,308	3,081	.7

TABLE IV

DEATHS

December, 1921.

Total Deaths and Deaths in certain age groups
 Classified for (A) Cities of over 40,000;
 (B) Cities and towns of 5,000 to 40,000, and
 (C) Remainder of province. (Concluded)

A G E G R O U P S								
Under 1	1-4	5-9	10-14	15-19	20-39	40-59	60 and over	Not Stated
12	1	1	3	2	11	10	59	1
3				1	3	4	13	
9	1	1	3	1	8	6	46	1
101	14	6	13	16	58	58	248	
22	7	1		3	9	15	27	
20	1		2	4	15	11	36	
59	6	5	11	9	33	32	185	
70	35	6	5	8	50	65	175	1
6	3	2		1	7	14	20	
5	1				8	4	17	
59	31	4	5	7	35	47	158	1
452	130	67	32	40	297	501	1,308	1
148	41	21	6	12	104	177	353	
102	36	23	9	13	67	124	273	
202	53	23	17	15	126	200	702	1
118	33	16	12	10	61	62	115	2
42	11	5	5	3	25	30	38	1
17	4	4	2	3	9	12	14	
59	18	7	5	4	27	20	63	1
135	37	24	11	16	61	71	101	2
3	4		1		4	4	5	
15	6	1	1	3	9	6	11	
117	27	23	9	13	48	61	85	2
80	27	27	13	10	51	87	79	1
15	8	7	5	3	17	27	33	
9		2		1	6	7	2	
56	19	18	8	6	26	53	44	1
64	13	11	4	6	69	110	109	3
27	4	4	1	1	24	59	45	
8	1			2	7	12	14	1
29	8	7	3	3	38	39	50	2
1,032	290	158	93	108	658	964	2,194	11
263	78	40	18	23	192	326	501	1
179	49	30	14	27	125	180	380	1
590	163	88	61	58	341	458	1,313	9

NO.	CAUSES OF DEATH	Tot-								
		al	PEI.	N.S.	N.B.	ONT.	MAN.	SASK.	ALB.	B.C.
	<u>General Diseases</u>									
1	(Enteric Fever									
	(Typhoid Fever	34		5	3	9	6	8	3	
7	Measles	12			2	3	2	3	1	1
8	Scarlet Fever	33			2	14	4	6	6	1
9	Whooping Cough	30		9	4	11	1	3	2	
10	Diphtheria	142		5	9	66	17	20	23	2
11	Influenza	62		8	4	33	3	2	10	2
16	Dysentery	7			1	6				
21	Erysipelas	18	1	1	1	9	2	2	1	1
23	Encephalitis									
	Lethargica	6				2	1	2	1	
25	Purulent infection,	25	1	2	1	12	2	3		4
	Septicaemia									
31-37	Tuberculosis: Total	374	1	43	25	165	35	33	24	38
31	of the Respiratory									
	system	299		30	21	135	26	27	22	29
32	of the Meninges	23		5	1	6	6	2		3
33	of the Intestines &	20		2	1	11	1	1	1	3
	Peritoneum									
34	of the Vertebral	8		3		1			1	3
	column									
35	of the Joints	4		1		2	1			
36	of other organs	8	1		1	4		2		
37	Disseminated,									
	acute & Chronic	12		2	1	6	1	1		1
38	Syphilis	17		1	1	9	2		3	1
43-49	Cancer: Total	387	7	32	20	213	30	29	21	35
43	of the Buccal									
	cavity	16	1		2	11		1		1
44	of the Stomach &									
	Liver	128	2	8	6	59	16	13	11	13
45	of the Peritoneum	49		3	2	32	3	3	2	4
46	Intestines & Rectum									
	of the female									
	genital organs	48	2	6	1	25	3	6	1	4
47	of the breast	30	1	1	1	21	2	2		2
48	of the skin	9		1		5			1	2
49	of other organs	107	1	13	8	60	6	4	6	9
50	Benign tumours &									
	tumours not returned									
	as malignant	4		1		3				
51	Rheumatic fever	13		1		7	2	1	1	1
52	Chronic rheumatism									
	osteo-arthritis, gout	21	1	1	2	16	1			
57	Diabetes	60	1	5	10	32	2	3	4	3
58	Other Anaemias &									
	Chlorosis	58		7	2	41		3	2	3
60	Other diseases of									
	the Thyroid gland	17	1	1	1	11		1		2
65	Leukaemia & Lym-									
	phadenoma	14		1	1	9		2		1
66	Alcoholism	12		1	2	5	2			2
	Other general diseases,									
	3, 6, 13, 15, 20, 42, 54,									
	56, 62, 63, 64, 69	31		3	2	15	4	4	2	1

TABLE V

CAUSES OF DEATH, ALL AGES

December, 1921.

No.	CAUSES OF DEATH	Tot- al	PEI.	N.S.	N.B.	ONT.	MAN.	SAEK	ALB.	B.C.
<u>Diseases of the Nervous System & Sense Organs.</u>										
70	Encephalitis	11		2		4	1	2	1	1
71	Meningitis	33	3	4	1	14	4	1	4	2
	(a) simple	28	3	3	1	13	2	1	3	2
	(b) cerebrospinal	5		1		1	2		1	
72	Tabes Dorsalis (Locomotor ataxia)	7				6		1		
73	Other diseases of the Spinal Cord	29		2	1	19	1	2	3	1
74	Cerebral Haemorrhage & Apoplexy	297	3	23	12	179	19	18	14	29
75	Other forms of paralysis	57	4	9	12	26		1	4	1
77	Other forms of mental alienation	33	1	4	6	13	1	2	4	2
78	Epilepsy	29		1	3	15	2	5	2	1
79	Convulsions (5 yrs. and over)	5		2		3				
80	Infantile convul- sions, 5 yrs of age.	52		10	1	18		9	9	5
83	Cerebral softening	8		2		6				
86	Diseases of the ears	14		1	1	5	4	2	1	
	Other diseases of the nervous system, 76, 81, 82, 84	30		5	1	16	2		1	5
<u>Diseases of the Circulatory System</u>										
88	Acute endocarditis and myocarditis	64		1		36	9	2	6	10
89	Angina Pectoris	42		7	1	23	2	1	4	4
90	Other diseases of the heart	467	4	36	40	284	31	26	12	34
91	Aneurism & Arterio Sclerosis	182	3	15	13	115	7	12	7	10
92	Other diseases of the arteries	17				9	3		2	3
93	Embolism & Thrombosis	6		1		5				1
<u>Diseases of the Respiratory System</u>										
98	Diseases of the Larynx	12			2	7		1	1	1
99-100	Bronchitis	240	1	20	12	115	34	27	11	20
101	Pneumonia	384	9	31	37	205	25	23	26	28
102	Pleurisy	21	1	3		9	1	3	3	1
103	Congestion and Haemorrhagic in- farct of the lung	14		3	2	4				5
105	Asthma	19	1	1		12	2		3	
107	Other diseases of the respiratory system, 106-107	11	2		1	5		1	1	1
<u>Diseases of the Digestive System</u>										
109	Diseases of the pharynx & tonsils	18			2	9	2	1	1	3
111	Ulcer of the Stomach and duodenum	25		3	3	11	1	3	3	1

TABLE V

CAUSES OF DEATH, ALL AGES

December, 1921.

No.	CAUSES OF DEATH	Tot- al	December, 1921.							
			PEI.	N.S.	N.B.	Ont.	Man.	Sask.	Alb.	B.C.
112	Other diseases of the stomach	41	3	3	2	17	5	4	5	2
113-114	Diarrhoea and Enteritis	124		6	4	62	16	23	6	7
117	Appendicitis and typhlitis	66	2	6	3	21	11	13	9	1
118	Hernia and Intestinal obstruction	61	1	8	1	33	7	5	3	3
119	Other diseases of the Intestines	12	2	1		7		1	1	
122	Cirrhosis not returned as alcoholic	14		1	4	4		1	1	3
123	Biliary Calculi	13			1	8	1		3	
124	Other diseases of the Liver	35		1	4	16	3	3	6	2
126	Peritonitis of un-stated origin	14		1	2	3	1	2	2	3
127	Other diseases of the digestive system	9			1	5	1	1	1	
<u>Non-Veneral diseases of the Genito urinary system and its annexa</u>										
128	Acute nephritis	23		4	1	12	2	2	2	
129	Chronic nephritis	149	5	18	7	87	5	8	5	14
131	Other diseases of the kidneys & annexa	18	3	1	2	9	2			1
133	Diseases of the Bladder	16		1		12			3	
135	Diseases of the prostate	19		1		14			4	
	Other non-veneral diseases of the genito urinary system and its annexa 132, 134, 137, 138, 139, 140, 141	16		1		11	1	1	1	2
<u>The Puerperal State</u>										
143	Other accidents of pregnancy	14		1		6	3	1	3	
144	Puerperal haemorrhage	8				5		2	1	
145	Other accidents of labour	10				4	3	1	2	
146	Puerperal sepsis	21		1		9	1	4	5	1
147	Phlegmasia alba dolens puerperal embolism or sudden death	1								1
148	Puerperal albuminuria and convulsions	15		3	3	7	1			1
<u>Diseases of the skin and cellular tissue</u>										
151	Gangrene	20		3	3	9	1		2	2
153	Phlegmon, acute abscess	10	1			3	5			1
<u>Diseases of the bones and organs of locomotion 156-158</u>										
		15		1		9	3	2		

TABLE V

CAUSES OF DEATH, ALL AGES

December, 1921.

NO.	CAUSES OF DEATH	Tot- al	PEI.	N.S.	N.B.	ONT.	MAN.	SASK.	ALTA.	B.C.
<u>Malformations</u>										
159	Congenital Mal- formations	75		5	2	44	7	9	4	4
160	Congenital debility	177	2	19	15	84	16	18	14	9
161	Premature & in- jury at birth	274	3	17	9	137	25	50	17	16
	(a) Premature birth	221	3	15	6	115	16	40	13	13
	(b) Injury at birth	53		2	3	22	9	10	4	3
162	Other diseases pec- uliar to early infancy	33	1	4		14	3	3	4	4
<u>Old Age.</u>										
164	Senility	266	14	61,32		124	7	14	8	6
<u>External Causes</u>										
165-174	Suicides (total)	43			1	16	3	6	11	6
177	Other accidental poisonings	10				3	3	1	2	1
178	Conflagration	6		6						
179	Burns (conflagrat- ion excepted)	23	1	1	2	13	5		1	
180	Accidental mechan- ical suffocation	11				9				2
182	Accidental drown- ing	14		2	2	7				3
183	Accidental injury by firearms (war casualties ex- cepted)	18		1	1	5	3	2	3	3
185	Accidental injury by fall	12			1	4	1	1	1	4
188	Accidental injury by crushing	45		1	2	25	3	1	2	11
	(a) railroad	12		1	1	5	2		1	2
	(b) Street car	3				3				
	(c) Automobile	14			1	7	1		1	4
	(d) by other crushing	16				10		1		5
189	Injury by animals (poisoning excepted)	9				5	2	2		
201	Fracture (cause not specified)	39		2	7	25	1		1	3
Other External										
Causes, 184, 186, 193,										
196, 202		31		2	5	13	3	2	2	4
	Homicide 197-199	5		1		3			1	
<u>Ill Defined Diseases</u>										
194 & 205		162	8	17	53	59	5	7	13	

The numbers preceding the Causes
of Death refer to the International
classification

TABLE VI

INFANTILE AND MATERNAL MORTALITY

December, 1934.

Deaths of children under one year of age and
Deaths of mothers from diseases peculiar to
Childbirth (stillbirths excluded) Classified
For (A) Cities of over 40,000 (B) Cities and
Towns of 5,000 to 40,000 and (C) Remainder of
Province.

PROVINCE	Infantile Mortality				Maternal Mortality	
	Male	Female	Total	Ratio per 1,000 living births	Number	Rate per 1,000 living births
P.E.I.	8	4	12	75		
	A					
	B					
	C					
N.S.	48	53	101	97	5	5
	A					
	B					
	C					
N.B.	43	27	70	76	3	3
	A					
	B					
	C					
Ont.	264	188	452	80	31	5
	A					
	B					
	C					
Man.	60	58	118	77	8	5
	A					
	B					
	C					
Sask.	79	47	135	76	8	5
	A					
	B					
	C					
Alta.	48	32	80	63	11	9
	A					
	B					
	C					
B.C.	36	28	64	93	3	4
	A					
	B					
	C					
Totals	586	437	1,023	79	69	5
	A					
	B					
	C					

TABLE VI

INFANTILE AND MATERNAL MORTALITY

December, 1921

Deaths of children under one year of age and
Deaths of mothers from diseases peculiar to
Childbirth (stillbirths excluded) Classified
For (A) Cities of over 40,000 (B) Cities and
Towns of 5,000 to 40,000 (C) Remainder of province

Age of infants dying under one year of age.

Under 1 week	1 week and under 2 weeks	2 weeks and under 3 weeks	3 weeks and under 4 weeks	1 month and under 2 months	2 months and under 3 months	3 months and under 6 months	6 months and under 12 months
5					2	1	4
1							2
4					2	1	2
35	4	1	2	6	8	23	22
3				2	1	6	10
2	1		2		4	8	3
30	3	1		4	3	9	9
27	4	2	5	5	1	16	10
2			1	2			1
2			2			1	
23	4	2	2	3	1	15	9
204	33	15	17	36	30	58	59
57	8	3	7	17	13	16	27
55	9	5		5	3	14	11
92	16	7	10	14	14	28	21
33	10	8	3	19	4	25	16
14	6	2	1	6		8	5
5	2	1		2	1	3	3
14	2	5	2	11	3	14	8
55	14	10	7	11	10	17	11
2					1		
10		1	1		2		1
43	14	9	6	11	7	17	10
32	9	2	2	4	5	11	15
7	1		1			2	4
4					1		4
21	8	2	1	4	4	9	7
28	3	2	3	6	3	10	9
10			1	4	1	5	6
4	1		1			1	1
14	2	2	1	2	2	4	2
479	77	40	39	87	63	161	146
95	15	5	11	31	16	37	53
83	13	7	6	7	11	27	25
241	49	23	22	49	36	97	68

TABLE VII

INFANTILE MORTALITY

December, 1921.

Deaths of children from specified diseases in first year of life

No.	Causes of death	Total	PEI.	N.S.	N.B.	ONT.	MAN.	SASK.	ALB.	B.C.
<u>General Diseases</u>										
9	Whooping cough	14		3	2	7		1	1	
10	Diphtheria	6				1	2	1	1	1
11	Influenza	12		3	3	4			1	1
21	Erysipelas	6			1	4	1			
32-37	Tuberculosis (total)	7		1	1	4				1
32	of the meninges & central nervous system generally	4			1	2				1
33	of the Intestines & peritoneum	1		1						
35	of the joints	1				1				
37	Disseminated, acute	1				1				
	Other general diseases, 6, 7, 8, 15, 16, 25, 51, 56, 58, 62, 69	17		1		4	3	5	4	
<u>Diseases of the nervous System and sense organs</u>										
71	Meningitis (Total)	13		3		5	3	1	1	
	(a) simple	10		3		4	1	1	1	
	(b) Cerebrospinal	3				1	2			
80	Infantile convulsions	49		10	1	16		8	9	5
86	Diseases of the ears and mastoid sinus	6		1		2	3			
	Other diseases of the Nervous System, 70, 74, 78, 84	8				5	2	1		
<u>Diseases of the Circulatory System</u>										
90	Other diseases of the heart	1					1			
<u>Diseases of the Respiratory System</u>										
99-100	Bronchitis	76		8	4	26	15	11	5	7
101	Pneumonia	63	1	9	4	22	8	8	5	6
	Other diseases of the Respiratory System 98, 103, 107	6	1	1	1	1		1		1
<u>Diseases of the Digestive System</u>										
112	Other diseases of the stomach (Cancer excepted)	10	1	1		3	2	1	1	1
113	Diarrhoea & Enteritis (under 2 years)	81		5	2	34	15	17	3	5
118	Intestinal obstruction	12	1	1		4	4		1	1
	Other diseases of the digestive system, 108, 109, 117, 124, 126	7				1	2	1	2	1
<u>Non Venereal diseases of the genito urinary system and its annexa</u>										
128	Acute nephritis, including unspecified under 10 yrs of age	3				2			1	

TABLE VII

INFANTILE MORTALITY

December, 1921.

Deaths of children from specified
Diseases in first year of life

No.	Causes of Death	Tot- al	PEI	N.S.	N.B.	ONT.	MAN.	SAS.	ALB.	B.C.
	Diseases of the skin and cellular tissue, 153, 155	4				1	3			
156, 157, 158.	Diseases of the bones and of the organs of locomotion 2	2		1		1				
	<u>Malformations and diseases of early infancy</u>									
159	Congenital malforma- tions	75		5	2	44	7	9	4	4
160	Congenital debility icterus & scleroma	175	2	19	15	83	16	17	14	9
161	Premature birth & injury at birth	274	3	17	9	137	25	50	17	16
	Other diseases peculiar to early infancy 162	32	1	4		14	3	2	4	4
	<u>External Causes 179, 180, 189</u>	10				8	1			1
204- 205	<u>Ill-Defined Diseases</u>	57	2	7	25	14	2	1	6	

The numbers preceding the Causes of Death
refer to the International Classification

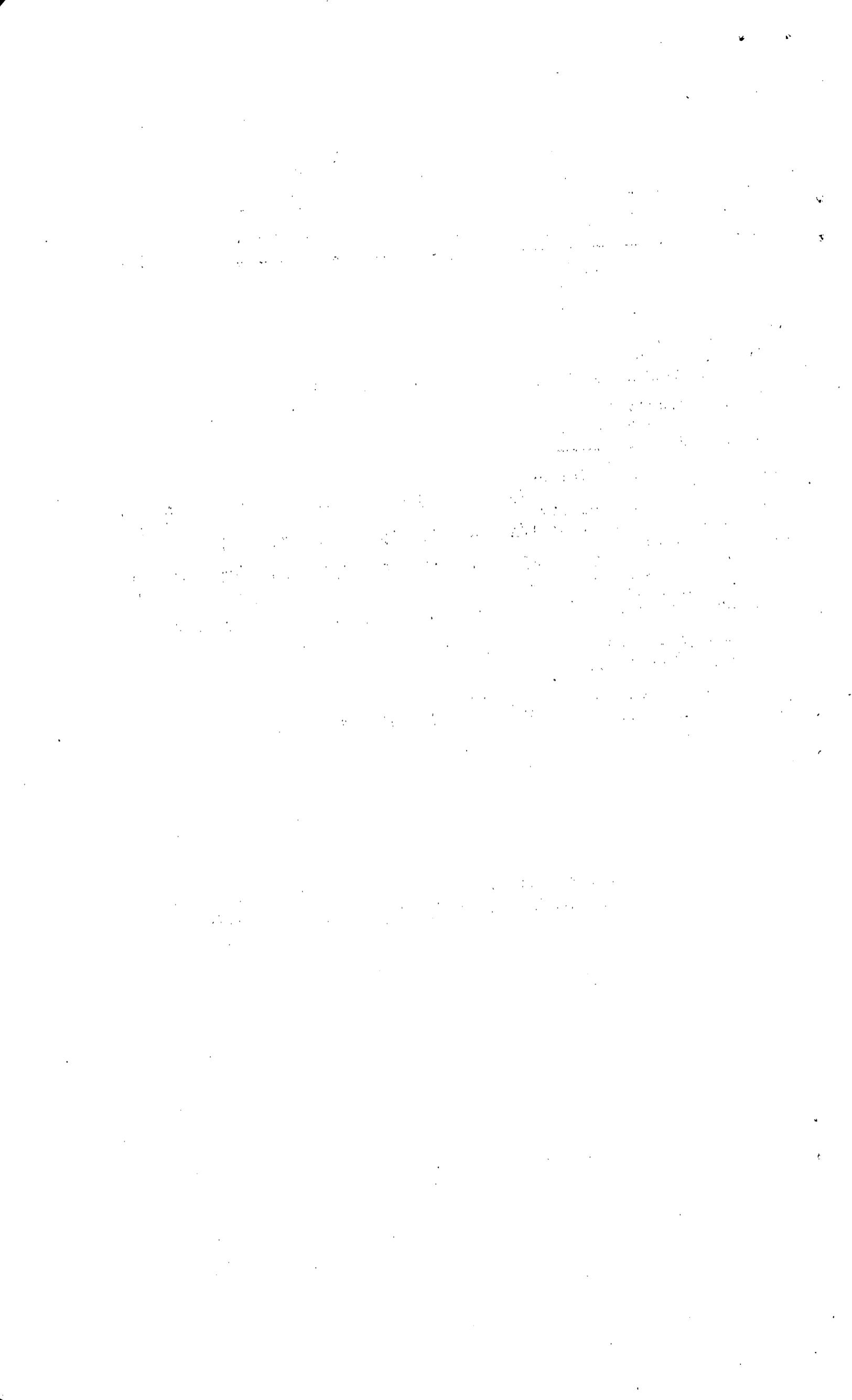


TABLE VIII

Births, Marriages and deaths in
Cities & Towns with population of 10,000
and over

18
December, 1923.

CITIES & TOWNS	Estimated population in thousands	Births (still- births excluded)	Marriages	Deaths (still- births excluded)	Crude monthly rates per 1,000 estimated population.		
					Births	Marriages	Deaths.
Toronto, Ont.	500	1,012	415	484	2.0	.83	1.0
Winnipeg, Man.	200	514	214	160	2.6	1.07	.8
Vancouver, B.C.	125	207	126	135	1.7	1.01	1.1
Hamilton Ont.	110	293	98	132	2.7	.89	1.2
Ottawa, Ont.	110	307	68	143	2.8	.62	1.3
Calgary, Alta.	77	169	93	55	2.2	1.21	.7
Edmonton, Alta.	68	176	103	62	2.6	1.51	.9
Halifax, N.S.	60	141	60	84	2.4	1.00	1.4
St. John, N.B.	60	95	32	53	1.6	.53	.9
London, Ont.	60	91	58	83	1.5	.97	1.4
Victoria B.C.	50	61	35	30	1.2	.70	.6
Regina, Sask.	40	87	86	21	2.2	2.15	.5
Brantford, Ont.	33	77	17	36	2.3	.52	1.1
Windsor, Ont.	32	62	42	36	1.9	1.31	1.1
Saskatoon, Sask.	28	86	82	26	3.1	2.93	.9
Sydney, N.S.	25	38	12	19	1.5	.48	.8
Kingston, Ont.	24	59	20	47	2.5	.83	2.0
Moosejaw, Sask.	23	56	53	17	2.4	2.30	.7
Peterborough, Ont.	22	39	12	26	1.8	.55	1.2
Sault Ste. Marie, Ont.	22	63	12	18	2.9	.55	.8
Kitchener, Ont.	21	44	24	19	2.1	1.14	.9
Fort William, Ont.	20	67	16	23	3.4	.80	1.2
St. Thomas, Ont.	20	24	20	24	1.2	1.00	1.2
Glace Bay, N.S.	19	13	5	12	.7	.26	.6
Moncton, N.B.	19	54	10	21	2.8	.53	1.1
St. Catharines, Ont.	19	52	16	24	2.7	.84	1.3
Stratford, Ont.	18	29	17	21	1.6	.94	1.2
Guelph, Ont.	17	22	21	22	1.3	1.24	1.3
Chatham, Ont.	16	30	14	20	1.9	.88	1.3
New Westminster, B.C.	16	30	13	26	1.9	.81	1.6
Port Arthur, Ont.	15	34	11	17	2.3	.73	1.1
Garnia, Ont.	15	21	15	18	1.4	1.00	1.2
Brandon, Man.	14	41	30	14	2.9	2.14	1.0
Charlottetown, P.E.I.	14	24	9	24	1.7	.64	1.7
Niagara Falls, Ont.	14	32	17	22	2.3	1.21	1.6
Salt, Ont.	13	31	9	14	2.4	.69	1.1
Belleville, Ont.	12	22	9	17	1.8	.75	1.4
Fethbridge, Alta.	12	30	23	18	2.5	1.92	1.5
New Glasgow, N.S.	12	18	3	7	1.5	.25	.6
Owen Sound, Ont.	12	21	12	17	1.8	1.00	1.4
St. Boniface, Man.	12	49	6	26	4.1	.50	2.2
Arherst, N.S.	11	13	13	6	1.2	1.18	.5
Medicine Hat, Alta.	11	35	9	9	3.2	.82	.8
Woodstock, Ont.	10	11	2	16	1.1	.20	1.6

TABLE VIII
 Births, Deaths & Marriages in Cities & Towns with population 10,000 & over (cont'd)
 December, 1921.

City & Province	Estimated population in thousands	Stillbirths		Infantile Mortality		Maternal Mortality		Deaths by ages in years.							Age unknown	
		Number	Rates per 1,000 living births	Deaths under 1 year	Rates per 1,000 living births	Number	Rates per 1,000 living births	1 to 4	5 to 9	10 to 14	15 to 19	20 to 39	40 to 59	60 and over		
Toronto, Ont.	500	39	38.5	85	84.0	9	8.9	18	10	5	5	62	98	201	-	1
Winnipeg, Man.	200	19	37.0	42	81.7	4	7.8	11	5	5	5	25	30	38		
Vancouver, B.C.	125	8	38.6	22	106.3	1	4.8	2	3	1	1	22	49	35		
Hamilton, Ont.	110	12	41.0	22	75.1	2	6.8	7	1	4	2	18	28	52		
Ottawa, Ont.	110	12	39.1	32	104.2			12	8	2		14	30	45		
Calgary, Alta.	77	4	23.7	6	35.5	3		5	3	2		9	14	16		
Edmonton, Alta.	68	6	34.1	9	51.1	1		3	4	3		10	13	17		
Halifax, N.S.	60	9	63.8	22	156.0			7	1	3		9	15	27		
St. John, N.B.	60	9	94.7	6	63.2	2		3	2	1		7	14	20		
London, Ont.	60	10	109.9	9	98.9			4	2	1		10	21	35		
Victoria, B.C.	50	1	16.4	5	82.0			2				2	10	10		
Regina, Sask.	40	6	69.0	3	34.5	1		4		1		4	4	5		
Brantford, Ont.	33	5	64.9	7	90.9			4		1		2	10	14		
Windsor, Ont.	32	4	64.5	5	80.6	1		2		2		4	7	14		
Saskatoon, Sask.	28	2	23.3	8	93.0	2		3		1		4	3	5		
Sydney, N.S.	25	1	26.3	1	26.3			3		1		4	3	7		
Kingston, Ont.	24	1	16.9	6	101.7			3		1		6	3	22		
Moosejaw, Sask.	23	2	35.7	4	71.4			3		1		2	3	3		
Peterborough, Ont.	22	6	153.8	2	51.3			2		3		3	3	13		

TABLE VIII Births, Marriages & Deaths in cities and towns with population 10,000 & over December, 1921 (cont'd)

C I T I E S & T O W N S	Estimated population in thousands	Typhoid	Measles	Scarlet Fever	Whooping cough	Diphtheria	Influenza	Tuberculosis		Cancer to 49	Diseases of the heart 87-90	Bronchial pneumonia	Pneumonia	Diarrhoea & Enteritis	Senility	External Causes 165 to 203	Other
		1	7	8	9	10	11	Lungs.	Other								
Toronto, Ont.	500	1	3	1	1	5	7	11	8	48	62	18	28	3	9	24	255
Winnipeg, Man	200			2		5	3	10	6	16	16	9	5	5	2	9	72
Vancouver, B.C.	125		1			1	1	12	5	14	14	3	13			13	57
Hamilton, Ont.	110					1		14	2	7	18	7	14	3	4	9	56
Ottawa, Ont.	110	1		2		9		6	2	9	18	3	11	1	3	9	72
Calgary, Alta.	77			2	1	5		2		8	4	1	8	2	1	3	20
Edmonton, Alta.	68	1		2		1		1	4	2	4	1	6	1	2	2	34
Halifax, N.S.	60				6	2	4	4		7	7	2	9		2	2	38
St. John, N.B.	60			1		2		6		7	8	5	9		5	5	20
London, Ont.	60					4		1		4	7	5	6		3	3	42
Victoria, B.C.	50			2		1		1	1	4	5	3	3		1	1	11
Regina, Sask.	40			2		1		1	2	1	1	3	1		4	1	9
Brantford, Ont.	33					1		2		3	7	1	2		1	1	13
Windsor, Ont.	32					1		1		3	4	1	4		1	1	19
Saskatoon, Sask.	28	1		1		1		2		3	2	1	1		2	2	17
Sydney, N.S.	25					1		4	1	6	1		2		4	1	7
Kingston, Ont.	24			1		2		2	1	1	5	1	6		2	1	22
Moosejaw, Sask.	23			2		2		3		1	3	2	2		1	1	8
Peterborough, Ont	22					2		1				1					13

STATISTICS CANADA LIBRARY
BIBLIOTHÈQUE STATISTIQUE CANADA



1010483299