

84 D02

DOES NOT CIRCULATE
NE PAS PRÊTER

CANADA

DOMINION BUREAU OF STATISTICS

DEMOGRAPHY BRANCH

VITAL STATISTICS

AUGUST 1921

I N D E X

	Pages
General Summary.....	1- 4
Table 1 - Births by Provinces.....	5
" 2. - Single, plural, illegitimate and still births.....	6
" 3. - Marriages.....	6
" 4. - Deaths by Provinces.....	7- 8
" 5. - Causes of Deaths.....	9-12
" 6. - Infantile and Maternal Mortality.....	13-14
" 7. - Causes of Infantile Mortality.....	15-16
" 8. - Births, Marriages and Deaths in cities and towns.....	17-21

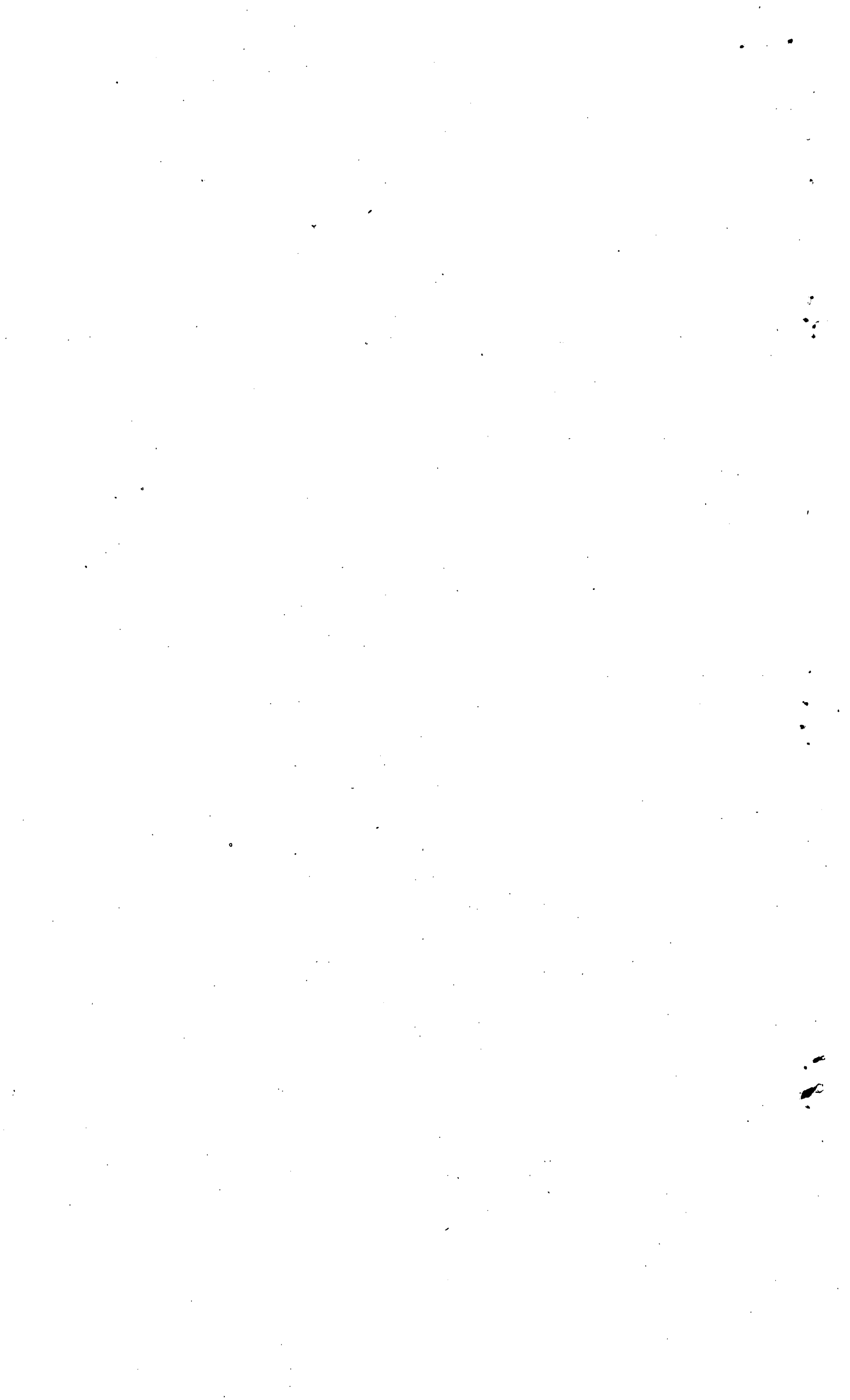
----- + + + -----

Published by Authority of the Hon. J. A. Robb, M. P.,

Minister of Trade and Commerce.

----- + + + -----

OTTAWA



FOREWORD

The Statistics of Births, Deaths and Marriages presented in this bulletin for August, 1921, are only preliminary and are subject to revision in the Annual Report. In comparing the reports by months it should be remembered that the 1920 monthly reports represent figures corrected up to the end of that year, while those for 1921 are provisional.

GENERAL SUMMARY

BIRTHS

As reported by the Registration Area of Canada for August, 1921, there were 13,321 births or a rate of 2.0 per 1000 estimated population as against a total of 13,977 births, or 2.2 per 1000 population in August 1920.

Total births and crude rates per 1000 estimated population are given by provinces in the following statement.

PROVINCES	Births, August 1921.		Births, August 1920	
	Totals	Rate per 1000 pop.	Totals	Rate per 1000 pop.
P. E. Island	167	1.8	184	2.0
Nova Scotia	1104	2.1	1123	2.2
New Brunswick	954	2.5	806	2.2
Ontario	6091	2.1	6151	2.1
Manitoba	1543	2.3	1518	2.3
Saskatchewan.....	1600	2.0	1928	2.5
Alberta	1003	1.5	1367	2.2
British Columbia	859	1.4	900	1.6
TOTALS	13,321	2.0	13,977	2.2

Plural, Illegitimate and Stillbirths.

Plural Births: One hundred and forty-two sets of twins and three sets of triplets were reported for August, 1921, a rate of 11 per 1000 single births. This gives 145 plural births to 13,173 mothers or 1 plural birth to 90 mothers. In August, 1920, there were 158 plural births amongst 13,817 mothers or 1 plural birth to 81 mothers.

Illegitimate: In the total of 13,321 living births reported for the Registration Area of the Dominion 222 births of this class were included, a rate of 17 per 1000 living births. This is the same rate as reported for August, 1920, when there were 240 illegitimate births out of 13,977 births.

Stillbirths: With a total of 468 stillbirths or a rate of 35 per 1000 living births, a slight decrease is shown over August, 1920, in which month there were 540 stillbirths reported or a rate of 39 per 1000 living births.

MORTALITY

Deaths reported for the Dominion Registration Area for August, 1921 show a decrease of 240 over the corresponding month in 1920. For August, 1921, there were 5376 deaths or a rate of .8 per 1000 estimated population while in August, 1920, there were 5616 deaths reported or a rate of .9 per 1000 population.

DEATHS IN AUGUST, 1920 AND 1921.

PROVINCES	1920		1921	
	Total	Crude rate per 1000 Pop.	Total	Crude rate per 1000 Pop.
P. E. Island	78	.8	70	.7
Nova Scotia	613	1.2	502	1.0
New Brunswick	541	1.5	444	1.2
Ontario	2769	1.0	2809	1.0
Manitoba	467	.7	457	.7
Saskatchewan	438	.6	396	.5
Alberta	389	.6	385	.6
British Columbia...	321	.6	313	.5
TOTALS	5616	.9	5376	.8

Deaths occurring in August grouped according to ages by provinces.

Age Groups	Totals	PEI	N.S.	N.B.	Ont.	Man.	Sask.	Alta.	B.C.
Under 1 yr.	1417	21	133	137	676	139	141	126	44
1 yr. & under 20 yrs.	795	13	50	65	371	95	86	78	37
20 yrs. & under 40 yrs.	648	5	59	41	325	60	55	51	52
40 yrs. & under 60 yrs.	791	5	65	49	428	65	45	55	79
60 yrs. & over.	1716	26	192	152	1003	98	69	75	101
Age Not stated	9	-	3	-	6	-	-	-	-
TOTALS	5376	70	502	444	2809	457	396	385	313

Two centenarians died during August, 1921, being 102 and 108 years of age respectively. Their personal history was as follows:

Age Sex	Civil Condition	Racial Origin	Birth-place	Occupation	Reported cause of death	Province where death occurred
102 Female	Widow	Indian	Ontario	Not given	Old Age	Ont.
108 Female	Widow	Indian	N.S.A.	None	Old Age	Ont.

From the six diseases shown in the accompanying statement there were 1185 deaths, or 22 per cent of the total deaths for August, 1921. In August, 1920, there were 1269 deaths from the same diseases or nearly 24 per cent of the total mortality for the month.

	August, 1920	August, 1921.
Diseases of the Heart	320	367
Pneumonia	147	115
Tuberculosis of the Lungs	271	308
Senility	298	184
Arterio Sclerosis	156	158
Broncho Pneumonia	77	53
TOTALS	1269	1185

Cancer (all forms) was responsible for 398 deaths out of the total 5376 deaths for August, 1921, which gives a ratio of 1 death attributable to cancer out of every 14 deaths from all causes for the month. The rate in August, 1920, was also 1 out of 14 deaths. By provinces, the cancer deaths were distributed as follows:

	AUGUST 1920	1921
P. E. Island	13	4
Nova Scotia	39	36
New Brunswick	29	25
Ontario	226	207
Manitoba	22	41
Saskatchewan	21	20
Alberta	19	29
British Columbia	23	36
TOTALS	392	398

Deaths from Cancer for the first six months of 1921 totalled 2336 or 1 death from cancer to every 15 deaths from all causes. Classified and by provinces, the cancer deaths are shown in the following statement.

DEATHS FROM CANCER IN VITAL STATISTICS REGISTRATION AREA FOR FIRST SIX MONTHS, 1921.

PROVINCE	TOTALS	Malignant tumours of buccal cavity 043X	Malignant tumours of stomach or liver 044X	Malignant tumours of the peritoneum in- testines & rectum. 045X	Malignant tum- ours of female genital organs 046X	Malignant tum- ours of the breast 046X	Malignant tum- ours of the skin 048X	Malignant tum- ours of other unspecified or organs. 049X
P. E. Island	31	1	15	1	1	3	1	9
Nova Scotia	234	8	89	31	19	11	7	69
New Brunswick	112	3	46	12	11	9	3	28
Ontario	1255	51	410	193	122	118	27	334
Manitoba	216	5	93	27	22	10	1	58
Saskatchewan	154	7	66	21	13	19	3	25
Alberta	139	3	54	26	11	9	2	34
BR. Columbia	195	8	71	35	17	17	1	46
TOTALS	2336	86	844	346	216	196	45	603

TUBERCULOSIS

Deaths from Tuberculosis in August	1920	1921	Deaths from Tuberculosis in August - classified	1920	1921
P. E. Island.....	6	8	Tuberculosis-		
Nova Scotia	51	49	of the lungs	271	308
New Brunswick	31	26	abdominal	28	18
Ontario	176	198	meningitis	29	24
Manitoba	29	32	spinal	7	6
Saskatchewan	23	22	of the joints	1	4
Alberta	23	18	disseminated	1	8
British Columbia	29	20	all other organs ...	31	5
TOTALS	368	373		368	373

INFANTILE MORTALITY

Deaths of children under one year of age, as reported by the Registration Area of Canada, were much lower in August, 1921, than in the corresponding month of 1920. August, 1921, gave a total of 1418 infant deaths, a rate of 106 per 1000 living births as against 1642 total infant deaths, or a rate of 117 per 1000 living births in August, 1920. Table VI gives further Statistics.

Twenty-eight per cent or 403 of the total 1418 infant deaths for August, 1921, died in the first week of life. In the corresponding month of 1920 there were 356 infants dieg in the first week of life or nearly 22 per cent of the total infantile mortality for the month.

INFANTILE MORTALITY, AUGUST 1921.

PROVINCES	1920		1921	
	Deaths un- der 1 year	Deaths un- der 1 year	Deaths under 1 month	Deaths un- der 1 week
P. E. Island.....	12	21	3	3
Nova Scotia	21	133	43	27
New Brunswick ...	243	137	30	22
Ontario	665	677	255	192
Manitoba	160	139	71	49
Saskatchewan	174	141	80	47
Alberta	129	126	59	42
British Columbia.	45	44	25	21
TOTALS.....	1642	1418	566	403

4.

Birth ratio of males to females in August is shown to have been as follows:

AUGUST		Males	Females	Males to 100 Females
Births	1920	7187	6790	106
Births	1921	6809	6512	105
Deaths	1920	895	747	120
Deaths	1921	805	613	131
Net addition under 1 yr	1920	6292	6043	104
Net addition under 1 yr.....	1921	6004	5899	102

From the six selected diseases contained in the following statement, there were 681 deaths of infants under 1 year of age out of the total 1418 infant deaths for August 1921 or 49 per cent of the infant deaths was due to these six diseases.

Selected Causes of Death	1920					1921				
	Apr.	May	June	July	Aug.	Apr.	May	June	July	Aug.
Broncho Pneumonia	86	102	94	48	34	92	53	33	24	21
Pneumonia	84	72	69	30	29	72	36	21	16	20
Convulsions	66	44	44	38	52	50	52	49	30	37
Diarrhoea & Enteritis ..	111	111	100	195	616	89	82	79	215	390
Congenital Malformations	63	82	65	34	59	71	60	58	62	72
Whooping Cough	46	65	64	66	59	44	35	21	25	41
TOTALS	456	476	432	411	849	418	318	261	372	681

Infantile Mortality by Provinces and ratio per 1000 living births for AUGUST, 1921.

PROVINCE	Total Deaths	Ratio per 1000 living births.
P. E. Island	21	126
Nova Scotia	133	120
New Brunswick	137	144
Ontario	677	111
Manitoba	139	90
Saskatchewan	141	88
Alberta	126	126
British Columbia	44	51
TOTALS	1418	106

The net addition to population in the Registration Area of Canada, by natural causes in August, 1921, was:

Total Births	13,321
Total Deaths	<u>5,376</u>
Net Addition	7,945

The maternal mortality as reported by the Registration Area of Canada was 57 or a rate of 4 per 1000 living births.

BIRTHS - AUGUST, 1921.

TABLE I. Births classified by Provinces for (A) cities of over 40,000; (B) cities and towns of 5,000 to 40,000; and (C) remainder of Province

Province (by classified areas)	Estimated population in thousands	Number of Births			Crude monthly birth- rate (Births per 1000 estimated population)	Sex ratio of births (Male births per 100 female births)
		Male	Female	Total		
P. E. I.	94	85	82	167	1.8	104
A.	-	-	-	-	-	-
B.	14	14	20	34	2.4	70
C.	80	71	62	133	1.7	115
N. S.	520	445	659	1,104	2.1	68
A.	60	74	77	151	2.5	96
B.	120	77	137	214	1.8	56
C.	340	294	445	739	2.2	66
N. B.	375	480	474	954	2.5	101
A.	60	45	45	90	1.5	100
B.	27	35	34	69	2.6	103
C.	288	400	395	795	2.8	101
Ont.	2,900	3,190	2,901	6,091	2.1	110
A.	780	905	815	1,720	2.2	111
B.	520	673	633	1,306	2.5	106
C.	1,600	1,612	1,453	3,065	1.9	111
Man.	670	807	736	1,543	2.3	110
A.	200	283	252	535	2.7	112
B.	50	80	63	143	2.9	127
C.	420	444	421	865	2.1	105
Sask.	800	849	751	1,600	2.0	113
A.	40	47	43	90	2.3	109
B.	60	91	65	156	2.6	140
C.	700	711	643	1,354	1.9	111
Alta.	650	513	490	1,003	1.5	105
A.	145	154	158	312	2.2	97
B.	25	34	31	65	2.6	110
C.	480	325	301	626	1.3	108
B. C.	610	440	419	859	1.4	105
A.	175	164	163	327	1.9	101
B.	35	41	44	85	2.4	93
C.	400	235	212	447	1.1	111
TOTALS	6,619	6,809	6,512	13,321	2.0	105
A.	1,460	1,672	1,553	3,225	2.2	108
B.	851	1,045	1,027	2,072	2.4	102
C.	4,308	4,092	3,932	8,024	1.9	104

TABLE II. Births classified as single, plural, together with number of illegitimate and stillbirths -

AUGUST - 1921.

PROVINCE	Total living births	Single Births	Plural Births			Illegitimate Births		Stillbirths	
			Twins	Trip-lets	Rate per 1000 single births	No.	Rate per 1000 total births	No.	Rate per 1000 living births
P.E.I.	167	163	2	-	12	3	18	4	24
N. S.	1,104	1,080	12	-	11	33	30	41	37
N. B.	954	934	10	-	11	11	12	21	22
Ont.	6,091	5,949	68	2	12	96	16	269	44
Man.	1,543	1,509	17	-	11	31	20	43	28
Sask.	1,600	1,576	12	-	8	21	13	45	28
Alta.	1,003	977	13	-	13	20	20	28	28
BrC.	859	840	8	1	11	7	8	17	20
TOTALS	13,321	13,028	142	3	11	222	17	468	35

TABLE III MARRIAGES - AUGUST, 1921.

PROVINCE	Number of Marriages				Marriage Rates.			
	Province	Cities over 40,000	Cities or towns 5 to 40,000	Rem. of Province	Province	Cities over 40,000	Cities or towns 5 to 40,000	Remainder of Province
P. E. I.	52	-	12	40	.55	-	.86	.50
N. S.	290	73	91	126	.56	1.22	.76	.37
N. B.	256	45	31	180	.68	.75	1.15	.63
Ont.	354	96	44	214	.53	.48	.88	.51
Man.	295	45	57	193	.37	1.13	.95	.28
Sask.	336	173	28	135	.52	1.19	1.12	.28
Alta.	357	203	18	136	.59	1.16	.51	.34

DEATHS - AUGUST, 1921.

7.

TABLE IV. Total Deaths and Deaths in certain age groups classified for (A) cities of over 40,000; (B) cities and towns of 5,000 to 40,000 and (C) remainder of Province.

PROVINCE	Estimated population in thousands.	Number of Deaths exclusive of stillbirths.	Crude monthly death rate per 1,000 estimated population.
P. E. I.	94	70	.7
A.	-	-	-
B.	14	25	1.8
C.	80	45	.6
N. S.	520	502	1.0
A.	60	57	1.0
B.	120	129	1.1
C.	340	316	.9
N. B.	375	444	1.2
A.	60	62	1.0
B.	27	44	1.6
C.	288	338	1.2
Ont.	2,900	2,809	1.0
A.	780	796	1.0
B.	520	604	1.2
C.	1,600	1,409	.9
Man.	670	457	.7
A.	200	135	.7
B.	50	82	1.6
C.	420	240	.6
Sask.	800	396	.5
A.	40	31	.8
B.	60	56	.9
C.	700	309	.4
Alta.	650	385	.6
A.	145	122	.8
B.	25	32	1.3
C.	480	231	.5
B. C.	610	313	.5
A.	175	138	.8
B.	35	17	.5
C.	400	158	.4
TOTALS	6,619	5,376	.8
A.	1,460	1,341	.9
B.	851	989	1.2
C.	4,308	3,046	.8

8.

DEATHS - AUGUST, 1921.

TABLE IV. Total Deaths and Deaths in certain age groups classified for (A) cities of over 40,000, (B) cities and towns of 5,000 to 40,000 and (C) remainder of Province (Concluded)

A G E G R O U P S								
Under 1	1-4	5-9	10-14	15-19	20-39	40-59	60 and over	Not Stated
21	6	3	2	2	5	5	26	-
-								
11	2	1	1	2	-	3	5	-
10	4	2	1	-	5	2	21	-
133	23	7	4	16	59	65	192	3
22	2	1	-	1	6	11	14	-
56	8	1	1	2	15	17	27	2
55	13	5	3	13	38	37	151	1
137	33	9	12	11	41	49	152	-
15	3	2	3	-	6	12	21	-
14	4	3	-	2	4	4	13	-
108	26	4	9	9	31	33	118	-
676	182	85	44	60	325	428	1,003	6
233	48	29	11	17	93	147	218	-
168	42	18	10	16	68	93	189	-
275	92	38	23	27	164	188	596	6
139	50	20	14	11	60	65	98	-
41	14	6	3	5	15	26	25	-
17	10	3	5	-	13	14	20	-
81	26	11	6	6	32	25	53	-
141	45	26	9	6	55	45	69	-
8	1	2	1	3	8	3	5	-
16	5	4	1	-	10	9	11	-
117	39	20	7	3	37	33	53	-
126	39	18	14	7	51	55	75	-
39	10	4	4	2	21	23	19	-
9	3	1	3	1	4	8	3	-
78	26	13	7	4	26	24	53	-
44	11	12	5	9	52	79	101	-
19	5	3	2	3	25	33	48	-
3	-	1	-	1	3	8	1	-
22	6	8	3	5	24	38	52	-
1,417	389	180	104	122	648	791	1,716	9
377	83	47	24	31	174	255	350	-
294	74	32	21	24	117	156	269	2
746	232	101	59	67	357	380	1,097	7

TABLE V. Causes of Death, all ages. August, 1921.

No.	Causes of Death	Total.	PEI.	N.S.	N.B.	Ont.	Man.	Sas.	Alb.	BC
<u>General Diseases</u>										
1	(Enteric fever	17	-	1	-	9	-	2	4	1
	(Typhoid fever	47	-	2	9	32	2	2	-	-
7	Measles	6	-	1	1	1	1	1	1	-
8	Scarlet fever	12	-	-	-	5	4	3	-	-
9	Whooping Cough	63	-	12	1	31	4	5	4	3
10	Diphtheria	84	1	4	1	44	5	15	3	4
11	Influenza	25	-	2	2	17	1	1	-	4
15	Cholera nostras	5	-	3	-	2	-	-	-	-
16	Dysentery	62	-	6	-	41	-	12	3	-
21	Erysipelas	15	-	-	1	7	1	4	1	1
25	Septicaemia	23	-	1	-	14	3	2	1	2
31-37	<u>Tuberculosis (total)</u>	373	8	49	25	193	32	22	19	20
31	T.B. of the Res- piratory System	308	7	40	24	167	26	14	15	15
32	T.B. of the Men- inges & Central Nervous System	24	1	4	-	11	4	1	1	2
33	T.B. of the Intest- ines & Peritoneum	18	-	4	1	8	1	3	1	-
34	T.B. of the Vertebral Column	6	-	-	1	3	-	2	-	-
35	T.B. of the joints	4	-	-	-	2	-	-	-	2
36	T.B. of the Genito- Urinary System	5	-	1	-	3	-	-	1	-
37	Disseminated T.B. (acute)	8	-	-	-	4	1	2	-	1
38	Syphilis	15	-	3	-	5	5	-	-	2
43-47	<u>Cancer (total)</u>	300	3	27	19	143	36	18	23	31
43	of the Buccal Cavity	10	-	2	1	5	1	-	-	1
44	of the stomach & liver	145	-	16	10	64	19	10	14	12
45	of the Peritoneum, Intestines & Rectum	76	2	5	5	46	7	2	4	5
46	of the Female Genital Organs	31	-	3	1	12	3	2	3	7
47	of the breast	30	1	-	2	13	5	3	2	4
48	of the skin	8	-	1	-	3	1	1	-	2
49	of other or unspec- ified organs	98	1	9	6	64	5	2	6	5
50	Benign Tumours & Tumours not return- ed as malignant	8	-	1	-	6	1	-	-	-
51	Rheumatic fever	15	-	1	3	7	1	2	1	-
52	Chronic Rheumatism	12	-	-	1	7	2	-	1	1
56	Rickets	5	-	-	-	4	-	1	-	1
57	Diabetes	49	-	6	2	23	5	3	5	5
58	Other anaemias & chlorosis	57	1	6	4	37	2	3	1	3
60	Other diseases of the Thyroid Gland	17	-	1	-	12	2	-	1	1
65	Leukaemia	9	-	-	-	4	1	1	1	2
<u>Other General Diseases</u>										
		41	-	2	3	19	2	5	5	5
<u>Diseases of the Ner- vous System & Sense Organs.</u>										
70	Encephalitis	14	-	-	-	11	1	1	-	1
71	Meningitis (total)	47	5	8	5	13	5	1	8	2
(a)	simple	34	4	6	5	10	3	-	5	1
(b)	cerebrospinal	13	1	2	-	3	2	1	3	1

No.	Causes of Death.	Tot- al.	PEI	NS	NB	Ont.	Man.	Sas.	Alb.	BC	
73	Other diseases of the spinal cord	35	-	2	4	25	2	1	-	1	
74	Apoplexy & Cerebral Haemorrhage	211	2	13	13	143	15	8	7	10	
75	Other forms or paralysis	50	-	18	7	19	3	-	2	1	
76	General paralysis of the Insane	11	-	1	-	4	2	1	-	3	
77	Other forms of mental alienation	17	-	3	1	11	-	1	-	1	
78	Epilepsy	14	-	-	2	7	2	-	1	2	
79-80	Convulsions	47	3	10	3	14	4	5	5	3	
82	Hysteria & Neuritis	7	-	-	-	7	-	-	-	-	
83	Cerebral softening	5	-	-	-	4	-	-	1	-	
	Other diseases of the nervous system & Sense Organs, 72, 81, 84, 86.	32	-	6	2	18	2	2	1	1	
88	Acute endocarditis & Myocarditis	60	-	3	2	35	3	4	8	5	
89	Angina Pectoris	30	-	4	1	15	3	3	2	2	
90	Other diseases of the heart	367	7	36	30	197	33	18	23	23	
91	Arterio Sclerosis	169	-	10	4	110	14	4	8	19	
92	Atheroma & other diseases of the Arteries	7	-	1	-	3	-	1	-	2	
93	Embolism & Thrombosis	12	-	2	-	6	-	2	1	1	
	Other diseases of the Circulatory System 8, 7, 94, 96	7	-	-	-	6	-	1	-	-	
	<u>Diseases of the Respiratory System</u>										
98	Diseases of the larynx	5	-	-	1	4	-	-	-	-	
99-100	Bronchitis	84	-	15	4	39	14	6	2	4	
101	Pneumonia	115	3	6	4	57	10	2	16	17	
102	Pleurisy	9	-	1	-	3	2	1	-	2	
103	Congestion & Haemorrhagic Infarct of the Lung.	9	-	1	3	3	-	-	1	1	
105	Asthma	13	1	2	-	6	1	-	3	-	
107	Other diseases of the Respiratory System.	12	-	-	2	7	-	2	1	-	
	<u>Diseases of the Digestive System</u>										
108	Diseases of the Buccal Cavity & Annexa	6	-	-	1	5	-	-	-	-	
109	Diseases of the Pharynx & Tonsils	18	-	1	-	12	1	2	2	-	
111	Ulcer of the Stomach & Duodenum	15	-	1	1	9	1	1	-	2	
112	Other diseases of the stomach	41	1	6	1	27	3	1	1	1	
113-114	Diarrhoea & Enteritis	692	11	58	78	354	73	51	60	7	
117	Appendicitis & Typhlitis	75	2	6	9	31	8	8	7	4	
118	Narria & Intestinal Obstruction	56	-	6	6	29	2	5	3	5	
119	Other diseases of the Intestines	17	-	1	1	7	1	2	4	1	
122	Cirrhosis not returned as alcoholic	10	1	-	1	6	-	2	-	-	

TABLE V. Causes of Death, all ages. August 1921.

No.	Causes of Death.	Total	PEI	NS	NB	Ont.	Man.	Sas.	Alb.	BC
123	Biliary Calculi	16	-	1	1	10	1	-	3	-
124	Other diseases of the liver	21	-	2	4	12	2	1	-	-
126	Peritonitis of un-stated origin	20	-	3	1	10	3	1	-	2
	Other diseases of the Digestive System.	8	-	1	-	3	-	-	4	-
	<u>Non-Venereal Diseases of the Genito-Urinary System & Its Annexa.</u>									
128	Acute nephritis	20	-	1	1	11	1	2	3	1
129	Chronic nephritis	131	2	13	9	77	6	9	6	9
130	Chyluria.	5	-	-	-	5	-	-	-	-
131	Other Diseases of the Kidneys & Annexa	10	-	1	3	3	-	-	2	1
133	Diseases of the Bladder	11	-	2	-	8	1	-	-	-
135	Diseases of the Prostate	15	-	-	3	12	-	-	-	-
	Other diseases of the Genito-Urinary System, 132, 134, 137, 138, 139, 141.	11	-	2	-	7	-	-	1	1
	<u>The Puerperal State</u>									
143	Accidents of pregnancy	10	-	1	-	7	-	-	-	2
144	Puerperal Haemorrhage	8	1	-	2	2	2	-	1	-
145	Accidents of labour	8	-	-	-	3	1	1	2	1
146	Puerperal Sepsis	8	-	-	1	5	-	2	-	-
147	Phlegmasia alba dolens, puerperal embolism or sudden death.	2	-	-	-	2	-	-	-	-
148	Puerperal albuminuria & convulsions	22	-	6	1	7	1	1	5	1
149	Childbirth without other explanation	5	-	-	-	3	-	1	-	1
	<u>Diseases of the Skin, & of the Bones & of the Organs of Locomotion.</u>									
	151-158	47	-	5	4	19	10	3	4	2
	<u>Malformations & Diseases of Early Infancy.</u>									
159	Congenital Malformations	76	1	3	6	37	10	7	5	7
160	Congenital Debility, icterus & scleroma	196	2	23	12	99	13	23	17	7
161	Premature Birth & Injury at Birth (total)	269	3	14	8	123	33	45	32	11
(a)	Premature Birth	242	2	10	6	117	27	41	28	11
(b)	Injury at Birth	27	1	4	2	6	6	4	4	-

TABLE V. Causes of Death, all ages. August 1921.

No.	Causes of Death	Tot- al	PEI	NS	NB	Ont.	Man.	Sas.	Alb.	BC
162	Other Diseases peculiar to Early Infancy	41	-	1	21	4	6	5	4	
163	Lack of care	2	-	-	-	1	1	-	-	
	<u>Old Age</u>									
164	Senility	184	5	37	30	95	6	4	5	2
	<u>External Causes</u>									
165-174	Suicides (total)	28	1	1	1	15	2	4	2	2
175-196	201-202 Accidents (total)	361	3	20	11	184	36	33	27	47
175	Poisoning by food	5	-	-	-	2	3	-	-	-
177	Other acute acci- dental poisonings	12	1	1	-	5	-	3	-	2
178	Conflagration	6	-	-	-	1	-	2	1	2
179	Burns (Conflag- ration excepted)	20	1	3	1	6	4	1	3	1
180	Accidental mechan- ical suffocation	2	-	-	-	2	-	-	-	-
181	Accidental absorp- tion of irrespirable or poisonous gas	4	-	1	-	2	-	1	-	-
182	Accidental drown- ing	85	-	3	2	53	6	4	5	12
183	Accidental injury by firearms	9	-	-	1	4	2	2	-	-
184	Accidental injury by cutting or piercing instru- ments	2	-	-	-	1	-	1	-	-
185	Accidental injury by fall	26	1	1	1	14	2	-	2	5
186	Accidental injury in mines	2	-	1	-	-	-	-	-	1
187	Accidental injury by machinery	6	-	-	1	1	3	1	-	-
188	Accidental injury by crushing	67	-	2	2	32	4	8	9	10
(a)	railroad accidents	20	-	-	-	12	2	2	3	1
(b)	street car accidents	1	-	-	-	1	-	-	-	-
(c)	automobile accidents	31	-	2	2	17	1	1	1	7
(d)	aeroplane & bal- loon accidents	1	-	-	-	-	-	-	1	-
(e)	other crushing	14	-	-	-	2	1	5	4	2
189	Injury by animals	14	-	-	-	7	1	2	4	-
	Other accidents & external causes. 193, 194, 195, 201, 202.	101	-	8	3	54	11	8	3	14
	Homicide (total)- 197-199	3	-	-	1	1	-	-	1	-
	Ill-defined diseas- es. 204-205	161	2	7	77	51	3	11	9	1

TABLE VI. INFANTILE AND MATERNAL MORTALITY - AUGUST, 1921.

Deaths of children under one year of age and deaths of mothers from diseases peculiar to childbirth (Stillbirths excluded). Classified for (A) Cities of over 40,000; (B) Cities and towns of 5,000 to 40,000, and (C) remainder of Province

Province	Infantile Mortality			Ratio per 1000 living births	Maternal Mortality	
	Male	Female	Total		Number	Rate per 1000 living births
P. E. I.	13	8	21	126	1	6
A.	7	4	11	324	1	29
B.	7	4	11	75	-	-
C.	6	4	10			
N. S.	78	55	133	120	2	2
A.	9	13	22	146	-	-
B.	30	26	56	262	1	5
C.	39	16	55	74	1	1
N. B.	67	70	137	144	4	4
A.	7	8	15	167	-	-
B.	6	8	14	203	1	14
C.	54	54	108	137	3	4
Ont.	381	296	677	111	29	5
A.	140	94	234	136	8	5
B.	93	75	168	129	7	5
C.	148	127	275	90	14	5
Man.	75	64	139	90	3	2
A.	18	23	41	77	1	2
B.	13	4	17	119	-	-
C.	44	37	81	94	2	2
Sask.	94	47	141	88	5	3
A.	6	2	8	89	-	-
B.	14	2	16	103	-	-
C.	74	43	117	86	5	4
Alta.	76	50	126	126	8	8
A.	23	16	39	125	-	-
B.	8	1	9	138	2	31
C.	45	33	78	125	6	10
B. C.	21	23	44	51	5	6
A.	9	10	19	58	3	9
B.	2	1	3	35	-	-
C.	10	12	22	49	2	4
TOTALS	805	613	1,418	1106	57	4
A.	212	156	378	117	12	4
B.	173	121	294	142	12	6
C.	420	326	746	93	33	4

TABLE VI. INFANTILE AND MATERNAL MORTALITY - AUGUST, 1921.

Deaths of children under one year of age and deaths of mothers from diseases peculiar to childbirth (Stillbirths excluded). Classified for (A) Cities of over 40,000; (B) Cities and towns of 5,000 to 40,000; (C) remainder of Province. (Concluded).

Age of infants dying under one year of age.

under 1 week	1 wk & un- der 2 wks.	2 wks. & un- der 3 wks	3 wks. & un- der 4 wks.	1 month & under 2 mos.	2 mos. & under 3 mos.	3 mos. & under 6 mos.	6 mos. & under 12 mos.
3	-	-	-	4	3	5	6
-	-	-	-	-	-	-	-
2	-	-	-	2	2	2	3
1	-	-	-	2	1	3	3
27	6	2	8	8	9	36	37
4	1	-	-	-	2	6	9
6	2	1	2	2	4	19	20
17	3	1	6	6	3	11	8
22	3	2	3	12	15	39	41
3	1	-	-	1	-	7	3
4	-	-	1	-	2	3	4
15	2	2	2	11	13	29	34
192	35	13	15	38	52	144	188
51	8	2	5	13	20	56	79
57	12	5	2	7	9	37	39
84	15	6	8	18	23	51	70
49	10	3	9	14	11	27	16
18	7	1	-	4	2	3	6
8	-	-	-	1	-	5	3
23	3	2	9	9	9	19	7
47	11	11	11	12	11	16	22
2	1	-	1	1	-	2	1
6	-	2	1	1	1	1	4
39	10	9	9	10	10	13	17
42	7	4	6	6	9	27	25
10	3	-	2	2	2	13	7
6	-	-	-	-	-	-	3
26	4	4	4	4	7	14	15
21	-	2	2	6	2	3	8
8	-	2	1	2	1	1	4
1	-	-	-	-	-	1	1
12	-	-	1	1	1	1	3
403	72	37	54	100	112	297	343
96	21	5	9	23	27	88	109
90	14	8	6	13	18	68	77
217	37	24	39	64	67	141	157

TABLE VII. INFANT MORTALITY, AUGUST 1921.

Deaths of children from specified diseases in first year of life.

No.	Causes of Death.	Tot- al	PEI	NS	NB	Ont.	Man.	Sas.	Alb.	BC
<u>General Diseases</u>										
9	Whooping Cough	41	-	8	2	22	4	2	2	1
16	Dysentery	28	-	2	1	19	-	6	1	-
32,37	Tuberculosis (total)	7	-	1	-	3	1	-	-	2
32	of the Meninges & Central Nervous System	6	-	1	-	2	1	-	-	2
37	Disseminated T. B. (acute)	1	-	-	-	1	-	-	-	-
38	Syphilis	6	-	3	-	1	2	-	-	-
56	Rickets	5	-	-	-	4	-	1	-	-
	Other general diseas- es 1, 7, 8, 10, 11, 15, 21, 42, 51, 53, 62, 69.	23	-	3	2	7	2	4	3	2
<u>Diseases of the Ner- vous System & Sense Organs.</u>										
71	Meningitis (total)	14	2	3	1	4	2	1	1	-
(a)	Simple	10	2	3	1	3	1	-	-	-
(b)	Cerebrospinal	4	-	-	-	1	1	1	1	-
74	Apoplexy & Cerebral Haemorrhage	7	-	1	1	4	1	-	-	-
80	Infantile Convul- sions	37	2	7	2	11	4	3	5	3
	Other diseases of the Nervous System, 70, 84.	3	-	-	-	3	-	-	-	-
<u>Diseases of the Circulatory System</u>										
	88, 90, 93, 96	7	-	1	-	3	-	1	2	-
<u>Diseases of the Respiratory System.</u>										
99-100	Bronchitis	30	-	4	1	9	7	5	-	4
101	Pneumonia	20	1	4	-	12	1	-	2	-
	Other diseases of the Respiratory System, 98, 103, 107.	5	-	-	1	3	-	-	1	-
<u>Diseases of the Digestive System</u>										
112	Other diseases of the stomach	11	-	2	1	4	2	-	-	-
113	Diarrhoea & Enteritis	490	9	47	58	254	48	29	42	3
118	Hernia & Intestin- al Obstruction	7	-	1	-	5	-	1	-	-
	Other diseases of the Digestive Sys- tem 108, 109, 119, 126	8	-	-	-	4	1	1	2	-
<u>Non-Veneral Diseas- es of the Genito- Urinary System and its annexa. 128, 131</u>										
		3	-	-	-	1	-	1	1	-

16.

TABLE VII. INFANT MORTALITY, AUGUST 1921.

Deaths of children from specified diseases in first year of life. - (Concluded)

No.	Causes of Death	Tot- al	PEI	NS	NB	Ont.	Man.	Sas.	Alb.	BC
	<u>Diseases of the skin and of the Bones & of the Organs of Locomotion. 151-155</u>	9	-	-	1	2	3	1	2	-
	<u>Malformations & diseases of early infancy</u>									
159	Congenital malformations.	72	1	3	5	36	9	6	5	7
160	Congenital debility, icterus & Scleroma	191	2	23	11	99	13	20	16	7
161	Premature birth & injury at birth	267	3	14	8	121	33	45	32	11
(a)	Premature birth	240	2	10	6	115	27	41	28	11
(b)	Injury at birth	27	1	4	2	6	6	4	4	-
162	Other diseases peculiar to early infancy	41	-	1	-	21	4	6	5	4
163	Lack of care	2	-	-	-	-	1	1	-	-
	<u>External Causes 175, 178, 193.</u>	4	-	1	-	1	-	2	-	-
	<u>Ill-defined Diseases, 204.</u>	80	1	4	43	22	1	5	4	-

TABLE VIII. Births, Marriages & Deaths in Cities & Towns with population 10,000 and over.

AUGUST - 1921.

CITIES & TOWNS	Estimated population in thousands	Births (stillbirths excluded)	Marriages	Deaths (stillbirths excluded)	Crude monthly rates per 1,000 estimated population.		
					Births	Marriages	Deaths
Toronto, Ont.	500	1061	-	435	2.1	-	.9
Winnipeg, Man.	200	535	214	135	2.7	1.07	.7
Vancouver, B.C.	125	246	160	108	2.0	1.28	.9
Hamilton, Ont.	110	281	-	113	2.6	-	1.0
Ottawa, Ont.	110	268	-	168	2.4	-	1.5
Calgary, Alta.	77	150	100	60	1.9	1.30	.8
Edmonton, Alta.	68	162	73	62	2.4	1.07	.9
Halifax, N.S.	60	152	73	57	2.5	1.22	1.0
St. John, N.B.	60	90	45	62	1.5	.75	1.0
London, Ont.	60	110	-	80	1.8	-	1.3
Victoria, B.C.	50	81	43	30	1.6	.86	.6
Regina, Sask.	40	90	39	31	2.3	.98	.8
Brantford, Ont.	33	64	-	34	1.9	-	1.0
Windsor, Ont.	32	112	-	36	3.5	-	1.1
Saskatoon, Sask.	28	60	33	28	2.1	1.18	1.0
Sydney, N.S.	25	44	17	29	1.8	.68	1.2
Kingston, Ont.	24	46	-	31	1.9	-	-
Moosejaw, Sask.	23	60	18	25	2.6	.78	1.1
Peterborough, Ont.	22	55	-	28	2.5	-	1.3
Sault Ste. Marie, Ont.	22	52	-	24	2.4	-	1.1
Kitchener, Ont.	21	41	-	14	2.0	-	.7
Fort William, Ont.	20	56	-	27	2.8	-	1.4
St. Thomas, Ont.	20	37	-	20	1.9	-	1.0
Glace Bay, N.S.	19	16	14	28	.8	.74	1.5
Moncton, N.B.	19	51	15	29	2.7	.79	1.5
St. Catharines, Ont.	19	63	-	21	3.3	-	1.2
Stratford, Ont.	18	39	-	20	2.2	-	1.1
Guelph, Ont.	17	37	-	33	2.2	-	1.9
Chatham, Ont.	16	39	-	16	2.4	-	1.0
New Westminster, B.C.	16	41	10	12	2.6	.63	.8
Port Arthur, Ont.	15	40	-	18	2.7	-	1.2
Sarnia, Ont.	15	28	-	20	1.9	-	1.3
Brandon, Man.	14	38	15	22	2.7	1.07	1.6
Charlottetown, P.E.I.	14	34	12	23	2.4	.86	1.8
Niagara Falls, Ont.	14	41	-	16	2.9	-	1.1
Salt, Ont.	13	35	-	6	2.7	-	.5
Belleville, Ont.	12	34	-	19	2.8	-	1.6
Lethbridge, Alta.	12	39	18	13	3.3	1.50	1.1
New Glasgow, N.S.	12	16	6	5	1.3	.50	.4
Owen Sound, Ont.	12	27	-	12	2.3	-	1.0
St. Boniface, Man.	12	39	13	32	3.3	1.08	2.7
Amherst, N.S.	11	13	14	18	1.2	1.27	1.1
Medicine Hat, Alta.	11	26	10	19	2.4	.91	1.7
Woodstock, Ont.	10	18	-	8	1.8	-	.8

STATISTICS CANADA LIBRARY
BIBLIOTHÈQUE STATISTIQUE CANADA



1010483295