



Transport
Canada

Transports
Canada



Canadian Motor Vehicle Traffic Collision Statistics



2015

Collected in cooperation with the Canadian Council
of Motor Transport Administrators

© Her Majesty the Queen in Right of Canada, represented by the Minister of Transport, 2017.

Cette publication est aussi disponible en français sous le titre Statistiques sur les collisions de la route au Canada 2015.

Catalogue No.: T45-3E-PDF
ISBN: 1701-6223

To request permission to reproduce materials from this publication for commercial purposes, please complete the following web form: www.tc.gc.ca/eng/crown-copyright-request-614.html

Or contact: TCcopyright-droitdauteurTC@tc.gc.ca

To find out more about national road safety programs or initiatives, call Transport Canada toll free at 1-800-333-0371 or e-mail us at mvs-sa@tc.gc.ca. You can also visit our web site at www.tc.gc.ca/motor-vehicle-safety or the Canadian Council of Motor Transport Administrators' web site at www.ccmta.ca.

More detailed motor vehicle collision data can be queried using the National Collision Database (NCDB) On-Line tool located at www.tc.gc.ca/VehicleCollisions.

INTRODUCTION

Transport Canada's National Collision Database (NCDB) contains data on all reportable motor vehicle collisions in Canada that the provinces and territories provide each year.

The federal, provincial and territorial governments in Canada work to improve road safety to reduce the number of fatalities and serious injuries and to have the safest roads in the world.

The year 2015 saw a decrease in the number of serious injuries, yet showed a slight increase in fatalities and total injuries.

- **In 2015, the number of motor vehicle fatalities was 1,858; up 0.3% from 2014 (1,852).**
- **The downward trend for serious injuries continued, dropping to 10,280 in 2015; down 1.1% from 2014 (10,397).**
- **The number of fatalities per 100,000 population was 5.2 in 2015; unchanged from the rate seen in 2014.**
- **The number of fatalities per billion vehicle kilometres travelled was 5.1 in 2015, the lowest on record.**

2015

COLLISIONS AND CASUALTIES 1996-2015

| YEAR | COLLISIONS | | VICTIMS | | |
|------|--------------------|------------------------------|-------------------------|-------------------------------|-------------------------------|
| | FATAL ¹ | PERSONAL INJURY ² | FATALITIES ³ | SERIOUS INJURIES ⁴ | INJURIES ⁵ (TOTAL) |
| 1996 | 2,740 | 153,944 | 3,129 | 18,734 | 227,283 |
| 1997 | 2,660 | 147,549 | 3,076 | 17,294 | 217,401 |
| 1998 | 2,583 | 145,615 | 2,919 | 16,410 | 213,319 |
| 1999 | 2,632 | 148,683 | 2,980 | 16,187 | 218,457 |
| 2000 | 2,548 | 153,290 | 2,904 | 15,581 | 222,848 |
| 2001 | 2,415 | 149,023 | 2,758 | 15,296 | 216,542 |
| 2002 | 2,583 | 153,832 | 2,921 | 15,894 | 222,665 |
| 2003 | 2,487 | 150,493 | 2,777 | 15,110 | 216,123 |
| 2004 | 2,438 | 145,150 | 2,735 | 15,572 | 206,104 |
| 2005 | 2,551 | 145,559 | 2,898 | 15,792 | 204,701 |
| 2006 | 2,586 | 142,517 | 2,871 | 16,044 | 199,976 |
| 2007 | 2,455 | 138,615 | 2,753 | 14,410 | 192,745 |
| 2008 | 2,193 | 127,571 | 2,431 | 12,851 | 176,394 |
| 2009 | 2,007 | 123,449 | 2,216 | 11,955 | 170,770 |
| 2010 | 2,021 | 123,615 | 2,238 | 11,796 | 172,081 |
| 2011 | 1,849 | 122,350 | 2,023 | 10,940 | 167,741 |
| 2012 | 1,837 | 122,663 | 2,079 | 11,087 | 166,479 |
| 2013 | 1,731 | 120,370 | 1,954 ^r | 10,663 | 164,493 |
| 2014 | 1,709 ^r | 113,782 ^r | 1,852 ^r | 10,397 ^r | 155,312 ^r |
| 2015 | 1,669 | 116,735 | 1,858 | 10,280 | 161,902 |

1. "Fatal collisions" include all reported motor vehicle crashes that resulted in at least one death, where death occurred within 30 days of the collision, except in Quebec before 2007 (eight days).
2. "Personal injury collisions" include all reported motor vehicle crashes which resulted in at least one injury but not death within 30 days of the collision, except in Quebec before 2007 (eight days).
3. "Fatalities" include all those who died as a result of a reported traffic collision within 30 days of its occurrence, except in Quebec before 2007 (eight days).
4. "Serious Injuries" include persons admitted to hospital for treatment or observation. Serious injuries were estimated from 1996 to 2015 because several jurisdictions under-reported these numbers.
5. "Total Injuries" include all reported severities of injuries ranging from minimal to serious.

^r Revised.

FATALITIES AND INJURIES BY AGE GROUP 2015

| AGE GROUP (YRS) | FATALITIES | SERIOUS INJURIES | INJURIES (TOTAL) |
|-----------------|------------|------------------|------------------|
| 0-4 | 21 | 98 | 2,198 |
| 5-14 | 30 | 320 | 6,463 |
| 15-19 | 139 | 959 | 14,836 |
| 20-24 | 204 | 1,269 | 19,086 |
| 25-34 | 282 | 1,823 | 29,991 |
| 35-44 | 216 | 1,472 | 24,200 |
| 45-54 | 263 | 1,539 | 24,686 |
| 55-64 | 275 | 1,287 | 18,648 |
| 65 + | 418 | 1,333 | 16,861 |
| NOT STATED | 10 | 180 | 4,933 |
| TOTAL | 1,858 | 10,280 | 161,902 |

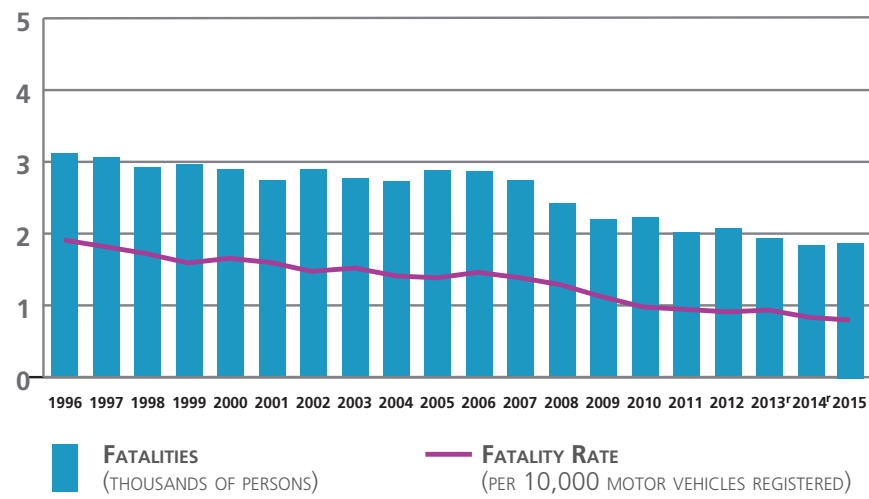
FATALITIES BY ROAD USER CLASS 2011-2015

| ROAD USER CLASS | 2011 | 2012 | 2013 | 2014 | 2015 |
|--------------------|--------------------|--------------------|--------------------|--------------------|-------|
| # DRIVERS | 1,023 ^r | 1,025 ^r | 964 ^r | 924 ^r | 925 |
| % DRIVERS | 50.6 ^r | 49.3 ^r | 49.3 | 49.9 ^r | 49.8 |
| # PASSENGERS | 401 | 457 | 369 ^r | 352 ^r | 360 |
| % PASSENGERS | 19.8 | 22.0 | 18.9 | 19.0 ^r | 19.4 |
| # PEDESTRIANS | 321 | 326 | 306 ^r | 301 ^r | 283 |
| % PEDESTRIANS | 15.9 | 15.7 | 15.7 | 16.3 ^r | 15.2 |
| # BICYCLISTS | 57 | 63 | 69 | 42 ^r | 47 |
| % BICYCLISTS | 2.8 | 3.0 | 3.5 | 2.3 ^r | 2.5 |
| # MOTORCYCLISTS* | 175 ^r | 175 | 198 | 190 ^r | 200 |
| % MOTORCYCLISTS | 8.7 ^r | 8.4 | 10.1 | 10.3 | 10.8 |
| # NOT STATED/OTHER | 46 ^r | 33 ^r | 48 | 43 ^r | 43 |
| % NOT STATED/OTHER | 2.3 ^r | 1.6 ^r | 2.5 | 2.3 | 2.3 |
| # TOTAL | 2,023 | 2,079 | 1,954 ^r | 1,852 ^r | 1,858 |
| % TOTAL | 100.0 | 100.0 | 100.0 | 100.0 | 100.0 |

* Includes moped riders.

^r Revised.

FATALITIES 1996-2015



CASUALTY RATES 2015

| | PER 100,000 POPULATION ¹ | | PER BILLION VEHICLE-KILOMETRES ² | | PER 100,000 LICENSED DRIVERS | |
|--------|-------------------------------------|----------|---|----------|------------------------------|----------|
| | FATALITIES | INJURIES | FATALITIES | INJURIES | FATALITIES | INJURIES |
| CANADA | 5.2 | 451.6 | 5.1 | 442.5 | 7.4 | 640.6 |
| NL | 7.9 | 624.4 | 8.2 | 647.8 | 11.5 | 906.2 |
| PE | 12.3 | 353.7 | 12.3 | 354.5 | 17.0 | 488.9 |
| NS | 5.6 | 511.5 | 4.8 | 433.4 | 7.5 | 686.2 |
| NB | 6.6 | 355.8 | 6.0 | 321.6 | 9.0 | 484.3 |
| QC | 4.4 | 447.9 | 4.9 | 499.3 | 6.6 | 673.1 |
| ON | 3.6 | 401.1 | 3.7 | 401.9 | 5.1 | 562.5 |
| MB | 6.0 | 921.2 | 5.5 | 837.4 | 8.9 | 1,354.6 |
| SK | 10.7 | 489.4 | 8.7 | 396.3 | 15.4 | 707.0 |
| AB | 7.9 | 429.4 | 5.5 | 298.2 | 10.5 | 574.0 |
| BC | 6.3 | 478.9 | 7.7 | 583.7 | 8.8 | 669.5 |
| YT | 10.7 | 556.3 | 6.1 | 319.5 | 14.2 | 736.6 |
| NT | 6.8 | 183.1 | 7.6 | 204.0 | 11.5 | 310.4 |
| NU | 2.7 | 134.1 | 26.3 | 1,289.5 | 13.6 | 668.3 |

1. Statistics Canada, Annual Demographic Estimates: Canada, Provinces and Territories, 2016, Catalogue No. 91-215-X.

2. Statistics Canada, 'Canadian Vehicle Survey', Catalogue No. 53-223-XIE.

Notes: Vehicle kilometres travelled data were not available for 2015 so they were estimated using average yearly change for the years 2012-2014

Data for Ontario are preliminary for 2015. Data for New Brunswick were estimated.

Recent changes in how traffic accident reports are collected in Manitoba resulted in an increased number of injuries of a minimal nature being captured in 2015.

PERCENTAGE OF DRIVER AND PASSENGER FATALITIES AND SERIOUS INJURIES BY AGE GROUP 2015

| AGE GROUP (YRS) | FATALITIES | | SERIOUS INJURIES | |
|-----------------|------------|------------|------------------|------------|
| | DRIVERS | PASSENGERS | DRIVERS | PASSENGERS |
| 0-4 | 0.0 | 4.7 | 0.0 | 3.1 |
| 5-14 | 0.0 | 5.6 | 0.0 | 7.5 |
| 15-19 | 7.1 | 10.6 | 7.7 | 15.3 |
| 20-24 | 11.5 | 15.6 | 12.5 | 14.5 |
| 25-34 | 18.2 | 10.3 | 19.9 | 15.7 |
| 35-44 | 10.7 | 10.3 | 17.0 | 9.5 |
| 45-54 | 16.1 | 8.4 | 16.3 | 8.4 |
| 55-64 | 14.6 | 13.9 | 13.3 | 8.3 |
| 65 + | 21.8 | 20.1 | 13.2 | 12.6 |
| NOT STATED | 0.0 | 0.5 | 0.1 | 5.1 |
| TOTAL | 100.0 | 100.0 | 100.0 | 100.0 |

NUMBER OF LICENSED DRIVERS BY GENDER AND BY AGE 2015

| AGE GROUP (YRS) | MALES | FEMALES | TOTAL |
|-----------------|------------|------------|------------|
| <16 | 24,908 | 20,751 | 45,659 |
| 16-19 | 595,129 | 550,280 | 1,145,409 |
| 20-24 | 1,016,626 | 941,479 | 1,958,105 |
| 25-34 | 2,215,484 | 2,132,603 | 4,348,087 |
| 35-44 | 2,196,382 | 2,142,334 | 4,338,716 |
| 45-54 | 2,431,975 | 2,321,870 | 4,753,845 |
| 55-64 | 2,251,820 | 2,131,493 | 4,383,313 |
| 65 + | 2,183,981 | 2,115,800 | 4,299,781 |
| NOT STATED | 0 | 0 | 0 |
| TOTAL | 12,916,305 | 12,356,610 | 25,272,915 |

LICENSED DRIVERS AND MOTOR VEHICLE REGISTRATIONS BY TYPE OF VEHICLE (IN THOUSANDS) 1996-2015

| | LICENSED DRIVERS ¹ | LIGHT-DUTY VEHICLES ² | COMMERCIAL VEHICLES ³ | MOTOR-CYCLES ⁴ |
|------|-------------------------------|----------------------------------|----------------------------------|---------------------------|
| 1996 | 19,964 | 13,251 | 3,620 | 312 |
| 1997 | 20,148 | 13,515 | 3,684 | 319 |
| 1998 | 20,744 | 13,887 | 3,767 | 334 |
| 1999 | 20,934 | 16,538 | 722 | 274 |
| 2000 | 20,593 | 16,832 | 739 | 311 |
| 2001 | 20,879 | 17,055 | 729 | 318 |
| 2002 | 21,163 | 17,543 | 724 | 350 |
| 2003 | 21,436 | 17,755 | 740 | 373 |
| 2004 | 21,673 | 17,920 | 752 | 409 |
| 2005 | 21,937 | 18,124 | 786 | 443 |
| 2006 | 22,278 | 18,739 | 841 | 485 |
| 2007 | 22,606 | 19,199 | 872 | 522 |
| 2008 | 22,972 | 19,613 | 907 | 567 |
| 2009 | 23,198 | 19,877 | 915 | 595 |
| 2010 | 23,541 | 20,268 | 964 | 616 |
| 2011 | 23,831 | 20,608 | 1,008 | 631 |
| 2012 | 24,147 | 20,652 | 1,053 | 661 |
| 2013 | 24,630 | 21,262 | 1,072 | 672 |
| 2014 | 24,914 | 21,730 | 1,121 ^r | 688 |
| 2015 | 25,273 | 22,068 | 1,147 | 709 |

1. Excludes temporary permits prior to 1999.
2. Pre-1999, these registrations include passenger automobiles. From 1999, light-duty vehicles include passenger type vehicles (automobiles, passenger vans), light trucks and vans (less than 4 500 kg).
3. Pre-1999, these registrations include trucks, buses and other commercial vehicles, such as vans. From 1999, these registrations include commercial vehicles (trucks and buses) greater than 4 500 kg.
4. Includes mopeds.

Source: 1996 to 1998: Statistics Canada, Catalogue No. 53-219, "Road Motor Vehicles - Registrations".
From 1999, the motor vehicle registration data are from Statistics Canada, CANSIM, Table 405-0004.
From 1999 the licensed driver data were provided by each jurisdiction.

Notes: A reduced level of police reporting in British Columbia in years 1996 through 2004 has affected the British Columbia totals and, to a lesser extent, national totals reported in this publication.

^r Revised.



PERCENTAGE OF DRIVER AND PASSENGER FATALITIES AND SERIOUS INJURIES WHERE VICTIMS WERE NOT USING SEAT BELTS 2011-2015

| | 2011 | 2012 | 2013 | 2014 | 2015 |
|-------------------------|------|------|------|------|------|
| DRIVERS | | | | | |
| FATALITIES | 31.4 | 31.8 | 32.0 | 26.2 | 28.7 |
| SERIOUS INJURIES | 12.9 | 12.6 | 11.7 | 11.8 | 10.4 |
| PASSENGERS | | | | | |
| FATALITIES | 34.1 | 36.6 | 30.7 | 33.2 | 27.6 |
| SERIOUS INJURIES | 20.9 | 20.0 | 18.5 | 17.7 | 17.4 |

Note: "Serious Injuries" include victims admitted to hospital for treatment or observation.

PERCENTAGE OF FATALITIES AND SERIOUS INJURIES BY ROAD USER CLASS 2015

| ROAD USER CLASS | FATALITIES | SERIOUS INJURIES |
|------------------|--------------|------------------|
| DRIVERS | 49.8 | 46.4 |
| PASSENGERS | 19.4 | 20.2 |
| PEDESTRIANS | 15.2 | 14.3 |
| BICYCLISTS | 2.5 | 4.7 |
| MOTORCYCLISTS* | 10.8 | 12.1 |
| NOT STATED/OTHER | 2.3 | 2.3 |
| TOTAL | 100.0 | 100.0 |

* Includes moped riders.

NUMBER OF COLLISIONS BY LOCATION 2015

| LOCATION | FATAL | PERSONAL INJURY |
|--------------------|--------------|-----------------|
| URBAN ¹ | 688 | 86,508 |
| RURAL ² | 953 | 27,860 |
| NOT STATED | 28 | 2,367 |
| TOTAL | 1,669 | 116,735 |

1. Urban includes: (a) metropolitan roads and streets and other urban areas, or (b) a speed limit at the collision site of 60 km/h or less.
2. Rural includes: (a) primary or secondary highways, as well as local roads, or (b) a speed limit at the collision site exceeding 60 km/h.

Note: In Alberta, New Brunswick, Manitoba, and Saskatchewan, "urban" includes any area within the corporate boundaries of a city, town, village or hamlet. "Rural" includes any area outside of what is defined as "Urban".