

Canadian Aviation Service Difficulty Reports - Feedback

The following content was published between October 3, 2017 and December 31, 2017.

Table of Contents

Head's Up	2
Bombardier, CL-600-2D24 (RJ900)	2
Circuit Breaker Panel Burned Through.....	2
Fixed Wing.....	2
Bombardier, CL-600-2C10 (RJ700)	2
Integrated Drive Generator power cable failures at terminal blocks (TBs)	2
Bombardier, BD-700-1A11	5
Belly Access Panel Missing	5
Bombardier, CL-600-2D24.....	6
Elevator Power Control Unit (PCU) Broken Rod End	6
de Havilland – Canada, DHC-8-402	7
Broken Wheel Tie Bolts.....	7
Piper, PA-28-140.....	8
Control Column T Section Welds Cracking and Failures	8
Engine	10
General Electric, CF34-3B1	10
Cracked Fan Blade Pins Causing High Engine Vibration	10
Pratt & Whitney - Canada, PW535A.....	11
Incompatible Chemicals Causing Oil Leak	11
Pratt & Whitney - Canada PW123B	12
Fuel Leak Caused By Skydrol	12
Rotorcraft.....	13
Equipment Airworthiness Directives (ADs)	13
FAA Special Airworthiness Information Bulletins (SAIB).....	14
EASA Safety Information Bulletin (SIB).....	15
Service Difficulty Reports (SDR)	15

Head's Up

Bombardier, CL-600-2D24 (RJ900)
Circuit Breaker Panel Burned Through

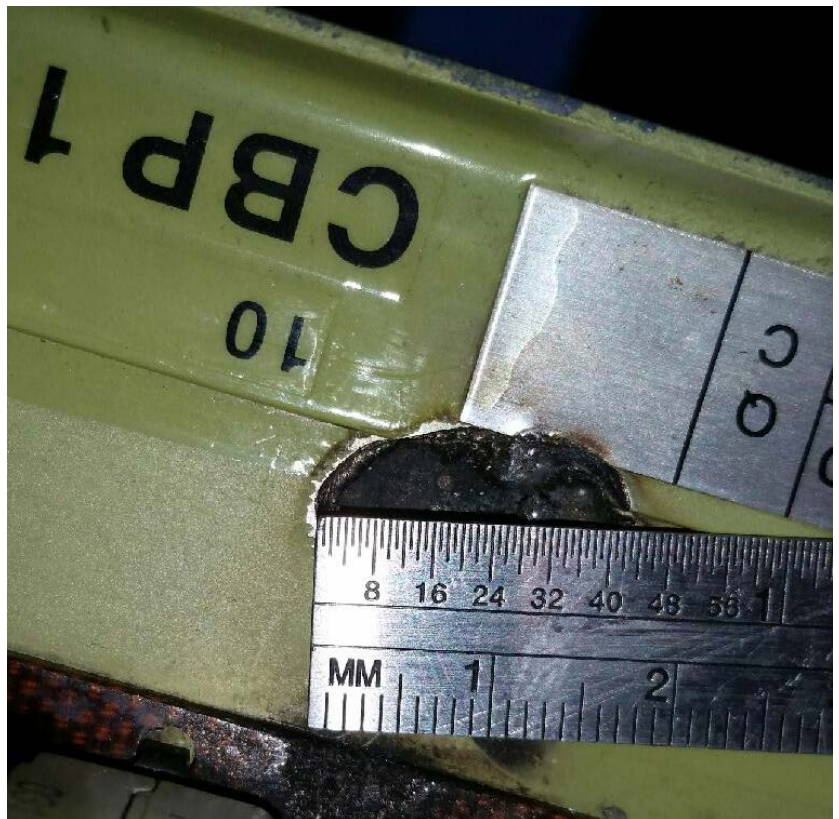
SDR #: 20161121006

Subject:

The left hand cockpit main circuit breaker panel was burned through when a foreign metal object contacted the windshield wiper circuit breaker and grounded to the panel door skin. The ensuing electrical arcing burned through the panel creating a hole.

Transport Canada Comments:

The burnt part of the panel is actually a door which hinges down in order to provide access to the circuit breakers for maintenance and inspections. It is likely that during some previous maintenance event that the foreign object was dropped or left inside the panel. The object then moved and shorted out the wiper circuit breaker causing the damage to the panel door.



Fixed Wing

Bombardier, CL-600-2C10 (RJ700)
Integrated Drive Generator power cable failures at terminal blocks (TBs)

SDR #: 20160210001, 20160202007, 20150630002

Subject:

Three separate Service Difficulty Reports (SDR) related to electrical failures on the CRJ700 have recently been reported. The failures occurred at terminal blocks located in the Integrated Drive Generator power circuit. As detailed below, wire lug terminals and/or terminal block studs were found burnt:

1. SDR 20160210001 - The left hand Integrated Drive Generator (IDG #1) power cable phase A was found burnt on terminal block (TB33), see picture 1. The cable identification is SCH001W-2 and SAV0001W-0.
2. SDR 20160202007 - The right hand Integrated Drive Generator (IDG #2) harness and terminal block (TB32) was found damaged and required replacement.
3. SDR 20150630002 - Damage found at terminal block 18 (TB18) for integrated drive generator for left engine in the aft cargo compartment. While performing another inspection task, one of the phase wires on TB18 was found with signs of overheating and due to the extent of the damage, the wires required replacement, see picture 2.

Transport Canada asked Bombardier to investigate the power cable failures at the terminal blocks and the investigation noted the following:

- *Insufficient torque applied to the self-locking nut may result in an increase in contact electrical resistance leading to a “hot spot”;*
- *A “hot spot” can lead to expansion and contraction related to changes in current draw through the stud which can cause the self-locking nut to further loosen;*
- *Loosened hardware can make the “hot spot” hot enough to char or melt the terminal block.*

Transport Canada Comments:

Transport Canada asks aircraft maintainers to take note of the following:

- *All affected terminal blocks were the same part number (MS2721253), they are used in various locations;*
- *These terminal blocks require a higher than standard torque to ensure a proper wire connection;*
- *The correct torque is located in Bombardier’s Electrical Standard Practices manual and must be followed at all times to ensure a secure connection.*

Transport Canada is monitoring this issue, please continue to submit SDRs for similar events.

Bombardier, BD-700-1A11

Belly Access Panel Missing

SDR #: 20161220017

Subject:

After departure, during climb out, the crew heard a very loud noise. The captain went to the aft lavatory to confirm the noise and the aft lavatory floor was vibrating heavily. The crew slowed the aircraft down, the noise decreased, and then they decided to return to the departure airport. Upon shut down, the crew noticed that the panel between the landing gear on the belly in front of the aft equipment access door was missing.

Transport Canada Comments:

During a walk around, it is easy to fail to notice loose or missing fasteners in the belly area of the aircraft due to it being so low to the ground. In the past couple of years, there have been a number of these events where this access panel has been lost in flight. Bombardier has issued a number of Service Bulletins (SB) to address this loose fastener issue with new hardware installation, however, these SBs have not been widely adopted. Transport Canada has issued Airworthiness Directive CF-2017-31 to mandate corrective action.



Bombardier, CL-600-2D24
Elevator Power Control Unit (PCU) Broken Rod End

SDR #: 20160628011

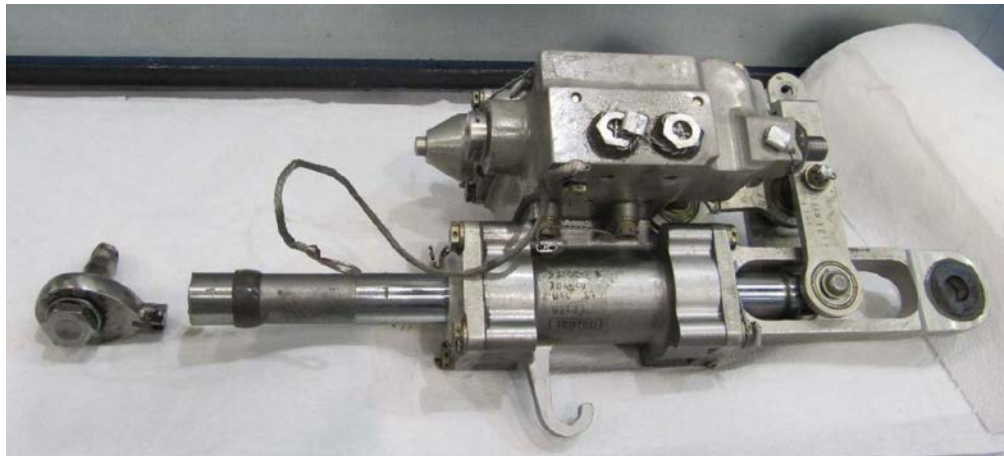
Subject:

While performing inspection task 000-27-220-010-A01, the right hand (R/H) elevator outboard PCU rod end was found broken.

The inspection required operating the elevators while pressurizing each hydraulic system separately. The R/H elevator movement with all hydraulic systems pressurized was correct but with only the #1 hydraulic system powered, the R/H elevator did not move. Further inspection revealed that the rod end of the outboard PCU was broken off. The rod end spherical bearing, bolt and bushings were jammed together and it was difficult to remove the bolt. During the bolt removal process, the elevator fitting was damaged beyond limits and required replacement. The elevator was removed, the fitting was replaced and the elevator was re-installed.

The operator suspects that when a PCU rod end spherical bearing becomes seized with the bolt and bushing it results in over stressing the rod end and causes it to break. Bombardier has been informed for further investigation of the root causes.

Transport Canada Comments:



de Havilland – Canada, DHC-8-402
Broken Wheel Tie Bolts

SDR #: 20170523012

Subject:

Flight crew reported an under-inflated tire in position three. Maintenance found five tie bolts fractured and some others loose. Both landing gear main wheel assemblies were replaced before releasing the aircraft to service.

Transport Canada Comments:

Recently, a number of different aircraft models have reported broken main wheel tie bolts. Always deflate the tire before removing a wheel since broken tie bolts can cause the rim to separate and has been known to seriously hurt the person working on the wheel. In this case the tire had deflated on its own but that is not always the case.



Piper, PA-28-140
Control Column T Section Welds Cracking and Failures

SDR #: 20170331002

Subject:

NOTE: Original text of submission has been edited to remove identifiable information and for improved reading.

Further to Civil Aviation Safety Alert (CASA) no. 2016-14, we removed the tee-bar control column (part number 62703-33) from our 1969 Piper Cherokee PA-28-140.

We carried out a Magnetic Particle Inspection (MPI) of the tee-bar and the MPI identified "an indication [of a possible crack] along the edge of the weld at a length of approximately 1.9 cm" which may be under-cutting from the original weld. Regardless, it showed up as an indication and may be a stress riser."

Transport Canada Comments:

Transport Canada Civil Aviation (TCCA) published CASA 2016-19 on December 19th 2016 following an incident involving a PA-28-140 aeroplane. The aircraft's control column T section weld at the junction of the horizontal and vertical tubes failed while a pilot instructor was attempting to land the aircraft. The horizontal tube severed from the vertical tube, resulting in sluggish and delayed flight control response. Luckily, the aircraft was very close to the runway and the instructor landed the aeroplane safely.

When the operator of the incident aeroplane attempted to replace the failed control column with a used serviceable unit from an out of service aeroplane, it carried out an MPI and found the replacement column to be cracked as well. At the relevant time, the aforementioned control columns were the only known reported instances of these types of failures in the long history of the Piper PA-28 fleet. The circumstances of this new event however are very similar. All three

aeroplanes were high time PA-28-140 models. This SDR reports that the latest aeroplane has accumulated over 11,000 hours in service.

As an interim measure until such time as Piper Aircraft has concluded its investigation into the control column failures and the FAA makes a determination of what action, if any, will be undertaken in response to the previous two events, TCCA published CASA 2016-14 to alert owners and operators of the issue. The CASA recommends an immediate detailed visual inspection of the control column T section welds for anomalies and further recommends the removal and MPI of the control column at the next annual or 100 hours inspection.

In this particular instance, due to age and time in service of its aeroplane, the operator exercised caution and due diligence by electing to remove the control column to carry out the MPI even though the aeroplane was not yet due for its annual inspection.

TCCA reminds all owners and operators of the PA-28 series aeroplanes to carefully consider the age and condition of their aeroplane with respect to following the recommendations contained in CASA 2016-14. The CASA can be found at the following link:

<http://www.tc.gc.ca/eng/civilaviation/opssvs/civil-aviation-safety-alerts-2016-14.html>.

TCCA reminds commercial air operators, flight training unit operators and approved maintenance organizations of the regulatory requirements to file an SDR where any reportable service difficulties are found during a visual or MPI or any other maintenance activity. In addition, while not a regulatory requirement, TCCA highly recommends that individual aircraft owners and maintainers should file an SDR if any anomalies are found. TCCA uses the intelligence and evidence gathered from the WSDRS database to assist in making a fact based determination as to whether an unsafe condition exists in the fleet and or whether mandatory corrective action by the FAA or TCCA is necessary.



Engine

General Electric, CF34-3B1

Cracked Fan Blade Pins Causing High Engine Vibration

SDR #: 20170315003

Subject:

During a ground power assurance check, abnormal fan (N1) vibration was noticed on the right hand engine. Inspection revealed severe damage on all the fan blades pins. Three of them were found in very bad condition.

Transport Canada Comments:

This unit is something that is called out for inspection in both the engine and airframe manuals however the airframe manual has lesser inspection requirements. Operators are reminded that when developing maintenance schedules, airframe and engine manufacturer requirements should both be considered. The manufacturers' recommendations should be thought of as a minimum requirement; operator and industry experience should also be considered.



Pratt & Whitney - Canada, PW535A Incompatible Chemicals Causing Oil Leak

SDR #: 20170404036

Subject:

During routine maintenance, a small oil seep around the number one engine oil pump was found. The seep was traced to one of the oil pump external transfer tube seals.

Pratt & Whitney were contacted to see if this was a known problem, it was confirmed it was not a known problem. As it was a small seep, they were not immediately concerned and agreed the best course of action was to monitor the seep and as long as it didn't deteriorate and to rectify it at the next scheduled engine shop visit.

The aircraft flew another 6 hours with no signs of the seep increasing, it then flew a 1.7 hour leg and upon landing oil was observed dripping from the engine cowl. The aircraft was grounded pending an inspection and it was found that the engine had leaked 2.5 quarts of oil on the flight. Further checks found a steady drip from the oil transfer tube seal with the engine running.

On removal of the oil pump and transfer tubes, it was found that the seal had eroded on the exposed air side of the seal. Pratt & Whitney evaluated the seal to try and determine the cause of the erosion, current thoughts are chemical erosion due to contact with an incompatible fluid, possibly some kind of cleaning solvent. All the other seals associated with the pump were found unaffected but were replaced anyway.

Transport Canada Comments:

Incompatible chemicals can potentially cause major problems for aerospace products. Issues can include corrosion, hydrogen embrittlement, and seal erosion as in the case above. Aircraft Maintenance Engineers must be aware of which products are approved for use on the equipment they maintain as listed in the most current manufacturers' publications.



Pratt & Whitney - Canada PW123B Fuel Leak Caused By Skydrol

SDR #: 20170510013

Subject:

During aircraft turn around, a fuel leak was noticed on the number two engine. After investigation, maintenance found that transfer tube O-rings on all bottom engine fuel nozzles were chemically deteriorated by Skydrol. Further investigation revealed that the Skydrol came from the nacelle waste container which was filled by a leak of the engine driven hydraulic pump shaft. The Skydrol was able to backtrack the drain pipe of the fuel nozzle during different flight attitudes of the aircraft, and chemically damaging the lower fuel nozzle transfer tube O-rings and causing a leak.

Transport Canada Comments:

This is not the first time Transport Canada has seen reports of Skydrol deteriorating seals and causing issues to other systems. Maintainers are reminded that even minor leaks must be investigated and corrected before they develop into major problems.

Rotorcraft

No new articles have been posted.

Equipment Airworthiness Directives (ADs)

Aircraft Maintenance Engineers (AMEs) and operators of the affected products are encouraged to obtain further information or a copy of the ADs from their regional TC office, their local Transport Canada Centre (TCC), their Principal Maintenance Inspector (PMI), or from the Civil Aviation AD website at: www.tc.gc.ca/cawis-swimn

Manufacturer	AD Number	Origin	Description
AMERI-KING	2017-16-01	US	ATA 25 - EMERGENCY LOCATOR BEACON - DETECT AND CORRECT NON-FUNCTIONING ELTS
B/E AEROSPACE	2017-18-12	US	ATA OF AMERICA CODE 35; OXYGEN
CROYDON	DCA-DH60-111A	NZ	ATA - 57 - WINGS
CROYDON	DCA-DH82-129A	NZ	ATA - 57 - WINGS
CROYDON	DCA-DH83-105A	NZ	ATA - 57 - WINGS
RECARO	2017-0192	EU	ATA 25 - EQUIPMENT & FURNISHINGS - PASSENGER SEATS - MODIFICATION

FAA Special Airworthiness Information Bulletins (SAIB)

A Federal Aviation Administration (FAA) SAIB is an information tool that alerts, educates, and makes recommendations to the general aviation community. It is non-regulatory information and guidance that does not meet the criteria for an Airworthiness Directive (AD). www.faa.gov/aircraft/safety/alerts/SAIB/

CE-18-05	Kidde	Fire Bottle, Portable	2017-11-21
SW-18-04	Airbus Helicopters	Engine Oil Drainage System	2017-11-16
	Deutschland GmbH		
CE-18-03	Costruzioni Aeronautiche Tecnam srl	TIME LIMITS/MAINTENANCE CHECKS - Costruzioni Aeronautiche Tecnam P2006T Wrong Rudder Trim Actuator Part Number	2017-11-15
SW-18-02	Bell Helicopter Textron Canada Limited	Loss of Hardware – Tail Rotor Drive Shaft Couplings	2017-11-02
NE-18-01	Esterline Belgium	Navigation - Integrated Flight Director System – Esterline DU-875, DU-885 and DU-885AF Displays	2017-10-24
SW-17-30	Rotorcraft	Inlet Barrier Filter System	2017-10-13
SW-17-31	Rotorcraft	Fuel System	2017-10-13
SW-17-28	Boeing Airplane Company, Wichita Division	Fuel Quantity Indicator	2017-10-10
SW-17-29	Sikorsky Aircraft Corporation	Landing Gear Dampers Inspection	2017-10-10
NE-17-27	Wencor	Engine Fuel and Control, Engine Fuel Filter	2017-09-29
NE-17-26	Avidyne	NAVIGATION - Traffic Advisory System - Misleading Intruder Aircraft Vertical Trend	2017-09-25

EASA Safety Information Bulletin (SIB)

A European Aviation Safety Agency (EASA) SIB is an information tool that alerts, educates, and makes recommendations to the general aviation community. It is non-regulatory information and guidance that does not meet the criteria for an Airworthiness Directive (AD). <http://ad.easa.europa.eu/sib-docs/page-1>

2017-18	Airbus Helicopters AS 350 B3 helicopters equipped with Arriel 2D Engine: Installation of Crash Resistant Fuel System	2017-10-27
2017-17	Kobe Steel Ltd. Material – Falsified Inspection Data	2017-10-17
2017-16	Airbus A330 and A340 Aeroplanes - Maintenance of Emergency Evacuation Systems	2017-10-09

Service Difficulty Reports (SDR)

Service Difficulty Reports are submitted by Aircraft Maintenance Engineers (AMEs), owners, operators and other sources to report problems, defects or occurrences that affect aircraft airworthiness in Canada.

Make/Model	Part Name	Part Number	Part Condition	SDR No.
AEROSPATIALE				
ATR 42 300	EXHAUST FAN	EVTA1925B	SEIZED	20170925013
ATR 42 300	FLIGHT GUIDANCE COMPUTER	7003974605	UNSERVICEABLE	20170726015
ATR 42 300	SMOKE DETECTOR	CGDU220000	UNSERVICEABLE	20170719008
ATR 42 300	NOSE WHEELS		NOT REPORTED	20170925008
ATR 42 300	LANDING GEAR CONTROL SELECTOR VALVE	1005383Y00	UNSERVICEABLE	20170711006
ATR 42 300	WHEEL ASSEMBLY	50068565R	UNSERVICEABLE	20170725014
ATR 42 300	PARTITION DOOR HANDLE	12905A41	WORN	20170822026
ATR 42 320	LOWER ARM UPPER PIN	D57407	DAMAGED	20170711013
ATR 42 320	AIRSPED INDICATOR	7002860909	UNSERVICEABLE	20170925006
ATR 42 320	GAS STRUT	14063760MB1	NEW	20170731016
ATR 42 500	LOCK BOLT COLLAR		CRACKED	20170706008

Make/Model	Part Name	Part Number	Part Condition	SDR No.
ATR 42 500	INVERTER	559012D	NOT REPORTED	20170817014
ATR 42 500	RUDDER TRIM ACTUATOR	82363	UNSERVICEABLE	20170719009
ATR 42 500	FUEL STORAGE		NOT REPORTED	20170925009
ATR 42 500	DOOR	S5287130402950	CORRODED	20170720013
ATR 42 500	BRAKE VALVE	GAA66034	NOT REPORTED	20170925012
ATR 42 500	NAVIGATION SYSTEM		NOT REPORTED	20170817015
ATR 42 500	SPRING	S52176770820400	BROKEN	20170706001
ATR 42 500	FRAME	S52376110214	CRACKED	20170705005
ATR 42 500	STIFFNER	S53174000214	CORRODED	20170706010
ATR 42 500	BEAM	S53672407202	CORRODED	20170710003
ATR 42 500	BEAM	S5367240720202	CORRODED	20170706014
ATR 42 500	FLOOR BEAM	S53372411200	CORRODED	20170703007
ATR 42 500	FLOOR BEAM	S53672406208	CORRODED	20170718016
ATR 42 500	FRAME	S53871404200	CORRODED	20170704016
ATR 42 500	SUPPORT	S5367800826902	CORRODED	20170710006
ATR 42 500	EXTENSION DEPRESSOR	S5367139028402	CORRODED	20170711011
ATR 42 500	SKIN	S53371320200	CORRODED	20170718007
ATR 42 500	WINDOW FRAME	S5337121320001	CORRODED	20170707001
ATR 42 500	SEAT TRACK	S53678001210S536	CORRODED	20170711002
ATR 42 500	SEAT TRACK	S53678001210S536	CORRODED	20170711005
ATR 42 500	SEAT TRACK	S53678001244245	CORRODED	20170710009
ATR 42 500	SEAT TRACK	S53678001246	CORRODED	20170713017
ATR 42 500	SEAT TRACK	S53678001246	CORRODED	20170719004
ATR 42 500	FRAME	S53372303200	CORRODED	20170710017
ATR 42 500	PICK-UP FITTING	S5751009220201	CORRODED	20170707004
ATR 42 500	FIXED PANEL	S57210911200	CORRODED	20170707009
ATR 42 500	FIXED PANEL	S57214441200	CORRODED	20170707008
ATR 42 500	FIXED PANEL	S57214441201	CORRODED	20170710018
ATR 42 500	FIXED PANEL	S57210911201	NOT REPORTED	20170710010
ATR 42 500	HINGE	S57415030200	CORRODED	20170705015

Make/Model	Part Name	Part Number	Part Condition	SDR No.
ATR 42 500	LOWER SKIN	S57114375200	CORRODED	20170710002
ATR 42 500	LOWER SKIN	S57214397200	CORRODED	20170710007
ATR 42 500	PANEL	S57114425200	CORRODED	20170710012
ATR 42 500	PANEL	S57114425200	CORRODED	20170710014
ATR 42 500	PANEL	S57114426200	CORRODED	20170710013
ATR 42 500	PANEL	S57114426200	CORRODED	20170718015
ATR 42 500	PANEL	S57214422201	CORRODED	20170710022
ATR 42 500	PANEL	S57214422201	CORRODED	20170719015
ATR 42 500	REMOVABLE PANEL	S57214422200	CORRODED	20170719011
ATR 42 500	SHROUD PANEL	S57515712204	CORRODED	20170706012
ATR 42 500	SKIN	S53371420238	CORRODED	20170710015
ATR 42 500	SKIN	S57114375200	CORRODED	20170718009
ATR 42 500	SKIN	S57210911201	CORRODED	20170710020
ATR 42 500	SKIN	S57214356200	CORRODED	20170712006
ATR 42 500	SKIN	S57214397200	CORRODED	20170710005
ATR 42 500	SKIN	S57214422200	CORRODED	20170710021
ATR 42 500	SPOILER	S5771000002001	CORRODED	20170713016
ATR 42 500	WING PANEL	S5711442000000	CORRODED	20170711004
ATR 42 500	RIB	S57615002720140	CORRODED	20170710004
ATR 42 500	RIB	S57510098201	CORRODED	20170718011
ATR 42 500	TRAILING EDGE	S5751008720202	CORRODED	20170717003
ATR 42 500	SPOILER	27S5771000002001	NOT REPORTED	20170707002
ATR 42 500	SPOILER	27S5771000002101	CORRODED	20170707003
ATR 42 500	TRIM RESISTOR	ST311441	UNSERVICEABLE	20170829008
ATR 72 212A	ENGINE		NOT REPORTED	20170731001
AEROSPATIALE HC				
AS 350B2	STARTER	150SG117Q	WORN	20170727013
AS 350B2	FUEL BOOST PUMP	P94B12209	UNSERVICEABLE	20170821024
AS 350B2	FUEL PRESSURE TRANSMITTER	704A37643000	UNSERVICEABLE	20170925020
AS 350B2	STARFLEX	350A31191700	CRACKED	20170825010

Make/Model	Part Name	Part Number	Part Condition	SDR No.
AS 350B2	TAIL ROTOR GEARBOX	350A33020004	UNSERVICEABLE	20170821021
AS 350B3	CIRCUIT BREAKER	MS2524430PNMS332	NOT REPORTED	20170831023
AS 350B3	STARTER	150SG122Q4	SHEARED	20170719018
AS 350B3	HYDRAULIC PUMP DRIVE ASSEMBLY	350A35013201	UNSERVICEABLE	20170721004
AS 350B3	FLANGE ASSEMBLY LOWER	350A31200202	CRACKED	20170705006
AGUSTA				
A109S	MAIN ROTOR BLADE	709010401111	CRACKED	20170720018
AW139	FUEL CELL		DEBRIS	20170811007
AW139	STARTER/GENERATOR	11525462	ARCED	20170825006
AW139	MAIN LANDING GEAR SHOCK ABSORBER	3G3210V00333	UNSERVICEABLE	20170927001
AW139	FIXING BOLT	3G5510L00151	WORN	20170705016
AW139	ANTI-ICE WINDSHIELD LEFT HAND	4G5610V00131	CRACKED	20170725013
AW139	RIGHT HAND ANTI-ICE WINDSHIELD	4G5610V00231	CRACKED	20170809004
AW139	RIGHT HAND WINDSHEILD	4G5610V00231	CRACKED	20170808008
AW139	ELASTOMERIC BEARING	3G6220V00154	DISBONDED	20170726004
AW139	SWASHPLATE BOOT	3G6230A06231	TORN	20170926007
AW139	GEARBOX: TAIL ROTOR	3T6522A00243	NEW	20170706005
AIR TRACTOR				
AT 502B	BRAKE DISK	APS16405806	CRACKED	20170907011
AT 802A	AILERON CONTROL	708311	NOT REPORTED	20170725009
AT 802A	FOAM TANK	0210211C	UNSERVICEABLE	20170725008
AT 802A	PROXIMITY SWITCH	5801	UNSERVICEABLE	20170808013
AT 802A	ENGINE STARTER		NOT REPORTED	20170808015
AIRBUS				
A319 112	O-RING		LEAKING	20170721001
A319 112	PIPE ASSEMBLY	D2901005100700	RUPTURED	20170809003
A319 114	ENTERTAINMENT SYSTEM		CHAFING	20170811002
A319 114	HIGH TEMPERATURE OVEN	8201170000	FAILED	20170928001
A319 114	FUEL LEVEL SENSING CONTROL	3004200000501	LEAKING	20170915001
A319 114	2-WAY HYDRAULIC CHECK VALVE	S4340092003	FAILED	20170817003

Make/Model	Part Name	Part Number	Part Condition	SDR No.
A319 114	CONTROL INTERFACE UNIT	664700500A4D	FAILED	20170731013
A319 114	NOSE LANDING GEAR DOOR UPLOCK	C24730100	FAILED	20170816004
A319 114	1M UPPER ELECTRICAL HARNESS	D23627000	FAILED	20170814002
A319 114	LINK	GA67342	FAILED	20170719007
A319 114	TUBE	3351043090	LEAKING	20170817002
A320 211	BLOWER EXTRACT COOLING FAN	4101415	WORN	20170731014
A320 211	SLAT FLAP CONTROL COMPUTER	4917011	JAMMED	20170725003
A320 211	SLAT FLAP CONTROL COMPUTER	4911710	FAILED	20170811003
A320 211	OUTBOARD FLAP INBOARD ACTUATOR	793A000007	FAILED	20170814003
A320 211	ELECTRONIC CLOCK	GMT4200	BURNT	20170707007
A320 211	DATA MANGEMENT UNIT	ED45A300	FAILED	20170807002
A320 211	LANDING GEAR BRAKE		NOT REPORTED	20170802003
A320 211	WHEEL ASSEMBLY	32200011	DAMAGED	20170726010
A320 211	WHEEL ASSEMBLY	32200011	FAILED	20170726011
A320 211	WHEEL ASSEMBLY	32200011	MISSING	20170726012
A320 211	WHEEL ASSEMBLY	32200011	SHEARED	20170726009
A320 211	NOSE LANDING GEAR STEER SERVO VALVE	C2473600001	FAILED	20170821003
A320 211	NOSE LANDING GEAR STEER SERVO VALVE	C2473600101	FAILED	20170726006
A320 214	CABIN PRESSURE CONTROL		NOT REPORTED	20170711003
A320 214	SLAT FLAP CONTROL COMPUTER	4917007	FAILED	20170808009
A321 211	MAIN WHEEL TIRE	32200211	WORN	20170726013
A321 211	BEAM ASSEMBLY - TIE (LEFT HAND)	D5755010200600	NOT REPORTED	20170908006
A330 243	LANDING GEAR BYPASS VALVE	FRH530014D	LEAKING	20170913007
A330 243	BRAKE ASSEMBLY	215782	NOT REPORTED	20170828009
A330 243	LOCKING MECHANISM RAMP	F5311252700100	NOT REPORTED	20170724006
A330 342	OVEN	72067000M	NOT REPORTED	20170726005
A330 343	A330 MAIN LANDING GEAR RADIAL ASSEMBLY	ACD205001	DELAMINATED	20170831019

Make/Model	Part Name	Part Number	Part Condition	SDR No.
A330 343	A330 MAIN LANDING GEAR RADIAL ASSEMBLY	ACD205001	DELAMINATED	20170907004
A330 343	DOOR ASSEMBLY FORWARD PASSENGER	F5218010000100	NOT REPORTED	20170918007
BAE - (RAYTHEON)				
HAWKER 850XP	BRAKE	AHA1897	OVERHAULED	20170728002
BAE - UK				
3112	STARTER GENERATOR	23079009	SHEARED	20170816007
AVRO 146RJ 100	FUEL PUMP	568125663001	FAULTY	20170721005
AVRO 146RJ 100	FORWARD RESTRAINT LINK	HC537L0466000	CRACKED	20170915012
AVRO 146RJ 85	BALL JOINT ASSEMBLY	79820	STIFF	20170907008
BEECH				
1900D	FLAP LANDING EDGE SKIN	10116000161	CRACKED	20170918008
1900D	WHEEL ASSEMBLY	114800893	OVERHAULED	20170705002
1900D	EMERGENCY LOCATOR TRANSMITTER	4530150ELT1104	FAILED	20170908007
1900D	YOKE ASSEMBLY - RIGHT HAND AILERON	1185210247	CRACKED	20170801009
1900D	LINE ASSEMBLY	1299700431	NOT REPORTED	20170706006
1900D	EXTEND LINE	171K0036CR0117	LEAKING	20170717002
1900D	HANDLE GEAR	1013841377	OVERHAULED	20170926001
1900D	HOSE ASSEMBLY-RIGHT HAND MAIN LANDING GEAR	1013880175	LEAKING	20170810007
1900D	ADAPTER	9535088	LEAKING	20170717001
1900D	BRAKE ASSEMBLY	30204A	OVERHAULED	20170731011
1900D	MAIN WHEEL ASSEMBLY	114800893	OVERHAULED	20170828008
1900D	BLOCK STEERING STOP	50820240	NEW	20170814005
1900D	WIRE	D21B22	CHAFED	20170928008
1900D	TRAFFIC ALERT AND COLLISION AVOIDANCE SYSTEM CONTROL HEAD	71015420801	NOT REPORTED	20170724002
1900D	ARM ASSEMBLY HANDLE	1295140821	OVERHAULED	20170926002
1900D	BONDED DOOR ASSEMBLY	1294000441	NOT REPORTED	20170710008

Make/Model	Part Name	Part Number	Part Condition	SDR No.
1900D	CARGO DOOR INNER HANDLE	11451403529	NEW	20170710011
1900D	MAIN LANDING GEAR DOOR ASSEMBLY	11481004031	OVERHAULED	20170725004
1900D	FRAME	12944003865	CRACKED	20170801005
1900D	CLOSING ANGLE	114430002180	NOT REPORTED	20170706009
1900D	BELLY SKIN	11443000227	CRACKED	20170831018
1900D	BELLY SKIN	11443000227	NOT REPORTED	20170818001
1900D	PLATE/SKIN		NOT REPORTED	20170815002
1900D	VERTICAL SPAR CAPS	10164001134	CRACKED	20170907012
1900D	LEFT HAND COCKPIT WINDSHIELD	10138402523	CRACKED	20170828013
1900D	FLAP SKIN	10116000161	CRACKED	20170903001
1900D	PROPELLER GOVERNOR	8410410	OVERHAULED	20170718004
1900D	ENGINE TRUST MOUNT	12991004717	NEW	20170711021
200	INBOARD DOOR ACTAUTOR CAM SUPPORT	1018100171	BENT	20170926005
200	OUTBOARD DOOR ACTUATOR CAM SUPPORT	1018100161	BENT	20170818002
200	VERTICAL GYRO	501115001	FAILED	20170831020
A100	ALTERNATING CURRENT (AC) INVERTER		NOT REPORTED	20170927004
A100	BELLCRANK ASSEMBLY FORWARD	504300311	CRACKED	20170911015
A100	SPAR	9763000023	CRACKED	20170911014
A100	SPAR WEB	5011002611	NOT REPORTED	20170724007
B200	BUSHING	10191002689	WORN	20170712009
B200	CIRCUIT BREAKER	727722	POPPED	20170717014
B200	LEFT HAND AILERON	101130001325	SERVICEABLE	20170802014
B300	POWER PACK MOTOR	481	IN SERVICE	20170718018
B300	BRAKE DEICE SHUT-OFF VALVE	1013810127	OVERHAULED	20170719012
B300	HOUSING ASSEMBLY	903840401	NOT REPORTED	20170830006
B300	HYDRAULIC MOTOR	571302	UNSERVICEABLE	20170731019
B300C	ELECTRICAL CONNECTOR		NOT REPORTED	20170929021
B300C	STARTER/GENERATOR		NOT REPORTED	20170720006

Make/Model	Part Name	Part Number	Part Condition	SDR No.
B300C	STARTER/GENERATOR	23085001	FAILED	20170712011
BELL TEXTRON - CAN				
206B	MAST	206010332019	SHEARED	20170911021
206B	STARTER/GENERATOR	150SG117Q	WORN	20170821019
206B	STARTER/GENERATOR	23032018	UNSERVICEABLE	20170902002
206B	TENSION TORSION STRAP ASSEMBLY	AA206011154107	CRACKED	20170808010
206B	ROD END BEARING	206001055001	LOOSE	20170914019
206B	DRIVE		NOT REPORTED	20170906010
206L	DIRECT CURRENT (DC) STARTER GENERATOR	23032027	UNSERVICEABLE	20170718005
206L	TACHOMETER GENERATOR	32005023	O/S	20170913004
206L 1	WIRING		BURNT	20170920007
206L 1	HYDRAULIC PUMP	206076030003	FAULTY	20170814010
206L 1	FITTING	206032409001	CRACKED	20170803014
407	FILTER TO HYDRO MECHANICAL UNIT FUEL HOSE	70079H100F210	LEAKING	20170816003
407	WATERTIGHT ASSEMBLY	407030002101	MISSING	20170711016
407	SHEAR BEARING	407310101105	DELAMINATED	20170717011
407	PLUG	204011713001	CRACKED	20170711012
407	PLUG	204011713001	CRACKED	20170711017
407	BLOWER HANGER BEARING LINKS	407040311101	WORN	20170826001
429	BUSHING		SEIZED	20170724013
429	BOLT	AN3C7A	WORN	20170915015
429	BOLT	AN3C7A	WORN	20170915018
429	BOLT	AN3C7A	WORN	20170915019
429	BOLT	AN3C7A	WORN	20170915020
429	BRACKET	429035704125	CRACKED	20170831009
429	BEARING	609310608101	WORN	20170919009
429	TUBE ASSEMBLY	429001022141	DEBONDED	20170905007
BELL TEXTRON - USA				
204B	HYDRAULIC HOSE	1240274C0210	UNSERVICEABLE	20170811010

Make/Model	Part Name	Part Number	Part Condition	SDR No.
204B	LEVER ASSEMBLY	212010302001	UNSERVICEABLE	20170812001
205A 1	ATTACHMENT FITTING	205030767005	CRACKED	20170920003
205A 1	DRIVE SHAFT BOOT	204040176101	LEAKING	20170809006
212	HYDRAULIC PUMP	212076011001	LEAKING	20170911019
212	BEARING	212311007101	FAILED	20170801011
412	BOOT	212040176101	CRACKED	20170717016
412EP	WIRE HARNESS		CONTACT	20170727012
412EP	DUPLEX BEARING	212040143103	UNSERVICEABLE	20170713022
BELLANCA				
8KCAB	FUEL PICKUP LINE CONNECTOR	110089	BROKEN	20170720016
BOEING				
727 223	VALVE ASSEMBLY SELECTOR	1032081	NOT REPORTED	20170824013
737 406	MACH TRIM ACTUATOR	2A7200A	UNSERVICEABLE	20170822018
737 406	FLAP TRANSMISSION	65C275078	UNSERVICEABLE	20170822019
737 406	METERING VALVE	10605904	UNSERVICEABLE	20170925005
737 406	YAW DAMPER COMPUTER	4084042911	UNSERVICEABLE	20170925010
737 406	YAW DAMPER COMPUTER	4084042911	UNSERVICEABLE	20170925011
737 406	STARTER	35057166	UNSERVICEABLE	20170807004
737 436	WHEEL/BRAKE ASSEMBLY	26098011	UNSERVICEABLE	20170728005
737 4Q8	COTTER PIN	MS24665304	MISSING	20170822024
737 7CT	RECIRCULATION FAN	6454052	UNSERVICEABLE	20170801008
737 7CT	CABIN PRESSURE CONTROL		NOT REPORTED	20170815007
737 7CT	OVERHEAT DETECTOR ASSEMBLY	90202001	UNSERVICEABLE	20170928010
737 7CT	STAB TRIM MOTOR	6355C000101	UNSERVICEABLE	20170922009
737 7CT	POSITION INDICATOR		NOT REPORTED	20170817004
737 7CT	INSTRUMENT PANEL		NOT REPORTED	20170922012
737 800	FLAP POSITION INDICATOR	2064151	NOT REPORTED	20170711015
737 86Q	BRAKE		NOT REPORTED	20170914018
737 8CT	AUDIO SYSTEM		NOT REPORTED	20170801007
737 8CT	AUDIO SYSTEM		NOT REPORTED	20170911017

Make/Model	Part Name	Part Number	Part Condition	SDR No.
737 8FN	HYDRAULIC LINE	272A445218	CRACKED	20170707013
757 2B7	RELAY K2	BACR13CF2AB	NOT REPORTED	20170928009
767	WHEEL/SKI/FLOAT		NOT REPORTED	20170915013
767 316	AUDIO SELECTOR PANEL	285T002246	FAILED	20170817010
767 328	BRAKE ASSEMBLY	2641212	NOT REPORTED	20170728003
767 333	PACKING	NAS1602910	LEAKING	20170711001
767 338	MACH INDICATOR		NOT REPORTED	20170829015
767 375	SLAT		NOT REPORTED	20170713019
767 375	SLAT DRIVE ASSEMBLY ACTUATOR	256T51204	FAILED	20170927003
767 375	MAIN TANK BOOST PUMP	5006003D	LEAKING	20170919004
767 375	LEADING EDGE DEVICES		NOT REPORTED	20170717004
767 38E	LIQUID-CRYSTAL DISPLAY UNIT		NOT REPORTED	20170802005
767 39H	BRAKE MULTIPLE DISK	26124121A	REPAIRED	20170915010
777 233LR	ELECTRONIC FLIGHT BAG ELECTRONIC UNIT	1982009	FAILED	20170911006
777 333ER	HIGH FREQUENCY ANTENNA COUPLER	9640453011	FAILED	20170808007
777 333ER	ENGINE DRIVER PUMP (EDP)	972952	FAILED	20170831012
787 9	VARIABLE FREQUENCY STARTER GENERATOR	7001330H03	FAILED	20170918009
787 9	VARIABLE FREQUENCY STARTER GENERATOR	7001330H03	FAILED	20170918010
787 9	GENERAL PROCESSING MODULE- 300	182513001	FAILED	20170825001
787 9	NAVIGATION SYSTEM		NOT REPORTED	20170807001
787 9	NAVIGATION SYSTEM		NOT REPORTED	20170821004
BOMBARDIER				
BD 100 1A10	BRACKET	3675811	DIFFICULT TO OPEN	20170906006
BD 100 1A10	DC POWER DISTRIBUTOR		NOT REPORTED	20170925019
BD 100 1A10	PICCOLO	C08141310001	INSTALLED INCORRECTLY	20170901005
BD 100 1A10	OUTER CYLINDER	40640	CORROSION	20170731018

Make/Model	Part Name	Part Number	Part Condition	SDR No.
BD 100 1A10	FLIGHT MANAGEMENT SYSTEM		NOT REPORTED	20170814015
BD 100 1A10	AILERON	1005761051005	MISSING	20170915011
BD 500 1A10	FLIGHT MANAGEMENT SYSTEM	81003112B0003	FAILED	20170706004
BD 500 1A10	FLIGHT MANAGEMENT SYSTEM	81003112B0003	NOT RESPONDING	20170814001
BD 500 1A10	AUTO THROTTLE		NOT REPORTED	20170716001
BD 500 1A10	TUBE ASSEMBLY	C01348506005	DAMAGED	20170918013
BD 500 1A10	POWER CONTROL UNIT - REMOTE ELECTRONIC UNIT	C05500026	FAULTY	20170808005
BD 500 1A10	RUDDER TRIM ASSEMBLY	1202100001	CONFIG WARNING	20170707005
BD 500 1A10	AC MOTOR PUMP	5311102	LEAKING	20170925004
BD 500 1A10	THERMAL PRESSURE TRANSDUCER	999D0013503	NOT REPORTED	20170710001
BD 500 1A10	BRAKE	900048291P	STUCK ON	20170921007
BD 500 1A10	FLIGHT MANAGEMENT SYSTEM DATA	81003112B0003	DELETED	20170705001
BD 500 1A10	BUSHING PIN BLOCK	B1490323	UNGLUED	20170713015
BD 500 1A11	BRACKET ASSEMBLY	C0120000001	COATING MISSING	20170824012
BD 500 1A11	BRACKET-MUFFLER SUPPORT	C01368262001	BROKEN	20170921010
BD 500 1A11	FLIGHT MANAGEMENT SYSTEM	81003112B0302	FAILED	20170824009
BD 500 1A11	STABILIZER CONTROL		NOT REPORTED	20170901011
BD 500 1A11	MOTIVE FLOW CHECK VALVE	2090200101	DETACHED	20170804005
BD 500 1A11	MOTIVE FLOW CHECK VALVE	2090200101	NOT REPORTED	20170808001
BD 500 1A11	HYDRAULIC HOSE	999D0002507	LEAKING	20170918002
BD 500 1A11	SLEEVE	41150001	MISSING	20170814006
BD 500 1A11	SURFACE MANAGEMENT SYSTEM		FAULTY	20170817006
BD 500 1A11	SURFACE MANAGEMENT SYSTEM		FAULTY	20170817007
BD 500 1A11	SURFACE MANAGEMENT SYSTEM		FAULTY	20170817008
BD 500 1A11	SURFACE MANAGEMENT SYSTEM		FAULTY	20170817009
BD 500 1A11	SURFACE MANAGEMENT SYSTEM		FAULTY	20170901010
BD 500 1A11	AUXILIARY POWER UNIT	1319C	INOPERATIVE	20170831008
BD 500 1A11	AUXILIARY POWER UNIT ASSEMBLY	1319C707207251	INOPERATIVE	20170703006
BD 500 1A11	AUXILIARY POWER UNIT STARTER	707207251	NOT REPORTED	20170901003

Make/Model	Part Name	Part Number	Part Condition	SDR No.
BD 500 1A11	SWITCH -SCAVENGE OIL	3043002	INOPERATIVE	20170929014
BD 700 1A10	CONTROL UNIT		FAILED	20170828010
BD 700 1A10	BONDED ASSEMBLY	GM118152257	CRACKED	20170802007
BD 700 1A10	SOFTWARE		FAULTY	20170831022
BD 700 1A10	MOTOR		CEASED	20170912005
BD 700 1A10	PASSENGER DOOR VENT BEAM	GS32105163GS3210	CRACKED	20170807003
BD 700 1A10	CHANNEL RUDDER QUADRANT	GD4171520	CRACKED	20170726014
BD 700 1A10	FUEL ACCESS PANEL	GM1161551	NEW	20170713020
BD 700 1A10	ENGINE		NOT REPORTED	20170927008
BD 700 1A11	AIR CYCLE MACHINE	GG43120103	FAILED	20170831021
BD 700 1A11	K3 CONTACTOR	59117461	ARCING	20170901007
BD 700 1A11	RAM AIR TURBINE DEPLOYMENT ACTUATOR	762830	USED	20170818006
CL600 2B19 (RJ100)	AIR CYCLE MACHINE FAN		BROKEN	20170823017
CL600 2B19 (RJ100)	FLIGHT MANAGEMENT COMPUTER	8220783036	FAILED	20170814007
CL600 2B19 (RJ100)	BRAKE & POSITION SENSOR UNIT	855D10015	FAULTY	20170814011
CL600 2B19 (RJ440)	PUMP PRESSURE HOSE	AE4096G0060000	LEAKING	20170712007
CL600 2B19 (RJ440)	MAIN LANDING GEAR SENSOR HARNESS	P1GB	NOT REPORTED	20170901006
CL600 2B19 (RJ440)	PRESSURE REGULATOR AND SHUT-OFF VALVE	3215622	FAILED	20170915009
CL600 2B19 (RJ440)	TEMPERATURE SWITCH	75065916	FAILED	20170925016
CL600 2B19 (RJ440)	HEAT SENSING ELEMENT	355962255	NOT REPORTED	20170712004
CL600 2B19 (RJ440)	HEAT SENSING ELEMENT	356024310	NOT REPORTED	20170906009
CL600 2B19 (RJ440)	HEAT SENSINT ELEMENT	3559287224872240	NOT REPORTED	20170912009
CL600 2B19 (RJ440)	POWER CONTROL UNIT	272007	INTERNAL LEAKING	20170731020
CL600 2B19 (RJ440)	FLAP CONTROL UNIT	860D10018	NOT REPORTED	20170720014
CL600 2B19 (RJ440)	FLAP ELECTRICAL CONTROL UNIT	860D10018	FAILED	20170802004
CL600 2B19 (RJ440)	BRAKE AND POSITION SENSOR UNIT	855D100	NOT REPORTED	20170721002
CL600 2B19 (RJ440)	FLAP ACTUATOR	852D10025	NOT REPORTED	20170817011
CL600 2B19 (RJ440)	AC MOTOR DRIVEN PUMP	848847	FAILED	20170810010

Make/Model	Part Name	Part Number	Part Condition	SDR No.
CL600 2B19 (RJ440)	AIR DATA SENSOR HEATER CONTROL	7858062	NOT REPORTED	20170901002
CL600 2B19 (RJ440)	AVIONIC COOLING FAN ASSEMBLY	AE0804C01	FAILED	20170803008
CL600 2B19 (RJ440)	SELECTOR VALVE	555405	FAILED	20170717005
CL600 2B19 (RJ440)	MAIN LANDING GEAR SIDESTAY ACTUATOR	17008	DEFECTIVE	20170912010
CL600 2B19 (RJ440)	MAIN LANDING GEAR SIDESTAY ACTUATOR	17008	FAULTY	20170822020
CL600 2B19 (RJ440)	NOSE LANDING GEAR WHEEL	5010598	NOT REPORTED	20170901004
CL600 2B19 (RJ440)	HAND CONTROL MODULE	166508722101	FAULTY	20170914016
CL600 2B19 (RJ440)	HAND CONTROL MODULE	16650101	LOSS OF CONTROL	20170720012
CL600 2B19 (RJ440)	HAND CONTROL MODULE	16650101	NOT REPORTED	20170810003
CL600 2B19 (RJ440)	HARNESS ASSEMBLY	17300221	NOT REPORTED	20170801003
CL600 2B19 (RJ440)	NOSE LANDING GEAR PROXIMITY SENSOR BRACKET	16215105	BENT	20170724010
CL600 2B19 (RJ440)	TARGET MOUNTING BRACKET	162255	BENT	20170725005
CL600 2B19 (RJ440)	POSITION DETERMINING		INCORRECT	20170821010
CL600 2B19 (RJ440)	AUXILIARY POWER UNIT	38004883	FAILED	20170821007
CL600 2B19 (RJ440)	AUXILIARY POWER UNIT DUCT ASSEMBLY	14239103	LOOSE	20170928004
CL600 2B19 (RJ440)	DOOR FRAME	601R3190169	CRACKED	20170814012
CL600 2B19 (RJ440)	PASSENGER DOOR	601R317011	CORROSION	20170802008
CL600 2B19 (RJ440)	PASSENGER DOOR INNER SKIN	601R3180245	CORRODED	20170908009
CL600 2B19 (RJ440)	LOWER FORWARD PAN	601R38304375	CORROSION	20170929020
CL600 2B19 (RJ440)	FRAME SECTOR	601R32007	CORROSION	20170927007
CL600 2B19 (RJ440)	LOWER FRAME SECTOR	601R36024	CORROSION	20170907009
CL600 2B19 (RJ440)	PRESSURE BULKHEAD WEB	601R36008	CORRODED	20170711008
CL600 2B19 (RJ440)	CHANNEL - FLOOR HAT SECTION	601R31118	CORRODED	20170707012
CL600 2B19 (RJ440)	E-BAY DOOR CUTOUT FUSELAGE	601R35005	CORROSION	20170707011
CL600 2B19 (RJ440)	FUSELAGE SKIN	601R35004339	NOT REPORTED	20170802011
CL600 2B19 (RJ440)	FUSELAGE SKIN PANEL	601R31022	CRACKED	20170929015
CL600 2B19 (RJ440)	PYLON RIB	6013700485	CRACKED	20170719014

Make/Model	Part Name	Part Number	Part Condition	SDR No.
CL600 2B19 (RJ440)	RIB FLANGE	6013700485	CRACKED	20170929019
CL600 2B19 (RJ440)	WINDSHIELD	NP3932113	CRACKED	20170704017
CL600 2B19 (RJ440)	BATT RIB CAP	60010389	CRACKED	20170725011
CL600 2B19 (RJ440)	AFT LOWER WING PLANK	601R1004687228	CRACKED	20170804010
CL600 2B19 (RJ440)	LOWER CENTER PLANK	601R100459	CRACKED	20170908008
CL600 2B19 (RJ440)	WING PLANK	601R10213	CRACKED	20170901009
CL600 2B19 (RJ440)	WING SKIN FORWARD PLANK	601R10044	CORROSION	20170918012
CL600 2B19 (RJ440)	SWITCH ASSEMBLY	1286466	FAULTY	20170905003
CL600 2B19 (RJ440)	MAIN FUEL CONTROL	4147T70P01	FAULTY	20170821012
CL600 2B19 (RJ440)	SENSING PYLON ELEMENT	21804100	FAULTY	20170810001
CL600 2B19 (RJ440)	POWER DRIVE UNIT	1267588	FAULTY	20170831013
CL600 2B19 (RJ440)	THRUST REVERSER POWER DRIVE UNIT	126758	NOT REPORTED	20170802002
CL600 2B19 (RJ440)	ENGINE OIL PRESSURE TRANSDUCER	BBDREF002195649	OIL PRESSURE WARNING	20170912008
CL600 2B19 (RJ440)	LOW CONDITIONER SIGNAL	722540	NOT REPORTED	20170821015
CL600 2C10 (RJ700)	LEFT HAND MAIN LANDING GEAR BAY TEMPERATURE HARNESS	67059058001	NOT REPORTED	20170925014
CL600 2C10 (RJ700)	SKEW DETECTOR	5913164	FAILED	20170712008
CL600 2C10 (RJ700)	OUTBOARD FLAP SKEW DETECTOR	5913108	FAULTY	20170719002
CL600 2C10 (RJ700)	SLAT ACTUATOR	766385C	FAILED	20170821009
CL600 2C10 (RJ700)	ELECTRONIC FLIGHT DISPLAY	6229810204	FAILED	20170915007
CL600 2C10 (RJ700)	RADIO ALTIMETER ANTENNA	S672002	NOT REPORTED	20170731015
CL600 2C10 (RJ700)	STOP BRACKET	6003808733	NOT REPORTED	20170922010
CL600 2C10 (RJ700)	FRAME FITTING	SH67033261332123	CORROSION	20170901012
CL600 2C10 (RJ700)	WINDSHIELD	NP139321	SHATTERED	20170927006
CL600 2C10 (RJ700)	OIL LEVEL PROBE	20016000001	NOT REPORTED	20170829011
CL600 2D15 (705)	BOLT	NAS660615NAS6605	NOT REPORTED	20170724005
CL600 2D15 (705)	INTERCOSTAL	SH670318221	CORRODED	20170817016
CL600 2D24 (RJ900)	AIR CYCLE MACHINE	GG67095009	FAILED	20170824010
CL600 2D24 (RJ900)	AIR CYCLE MACHINE	GG670950095	FAILED	20170707006

Make/Model	Part Name	Part Number	Part Condition	SDR No.
CL600 2D24 (RJ900)	TEMPERATURE SENSOR	GG43620153	NOT REPORTED	20170704018
CL600 2D24 (RJ900)	DC RIGHT POWER CENTER	920GC02Y01	FAULTY	20170921012
CL600 2D24 (RJ900)	POWER SUPPLY BOARD ASSEMBLY	601A516703	NOT REPORTED	20170829010
CL600 2D24 (RJ900)	PITCH TRIM SWITCH	7205722	MALFUNCTION	20170913001
CL600 2D24 (RJ900)	SKEW FLAP TRACK DETECTOR	5913164	FAILED	20170707010
CL600 2D24 (RJ900)	HARNESS	SH6705901900703	MELTED	20170705003
CL600 2D24 (RJ900)	MAIN LANDING GEAR SELECTOR VALVE	533409	NOT REPORTED	20170703005
CL600 2D24 (RJ900)	HARNESS	4910313	NOT REPORTED	20170704019
CL600 2D24 (RJ900)	WHEEL SPEED TRANSDUCER	60077047	FAILED	20170714001
CL600 2D24 (RJ900)	PROXIMITY SENSOR	895001	NOT REPORTED	20170831014
CL600 2D24 (RJ900)	INERTIAL REFERENCE UNIT	46502004000402	FAILED	20170821001
CL600 2D24 (RJ900)	PERISEAL	9093A001201	NOT REPORTED	20170914015
CL600 2D24 (RJ900)	FRAME - LEFT HAND SIDE	CC67034146	CRACKED	20170711010
CL600 2D24 (RJ900)	FLOORBEAM	CC670340941S	CRACKED	20170815006
CL600 2D24 (RJ900)	SKIN LOWER PANEL	SH6903706121	CORRODED	20170704015
CL600 2D24 (RJ900)	WINDSHIELD	NP139321	CRACKED	20170929018
CL600 2E25 (RJ1000)	WINDSHIELD	NP139321	CRACKED	20170818005
CL600 2E25 (RJ1000)	CLOSING RIB	CC69015110	LOOSE	20170705008
CANADAIR				
CL215 6B11 (CL215T)	TAIL FINLET	215T2120022	CRACKED	20170911010
CL600 2A12 (601)	HYDRAFLOW COUPLING	14J26	WORN	20170718013
CL600 2B16 (604)	TIRE	276970	SUSPECTED DEFECTIVE	20170908001
CL600 2B16 (604)	FREQUENCY CONVERTER 60HZ	100201021943	INOPERATIVE	20170725012
CL600 2B16 (604)	ENGINE DRIVEN PUMP	601R751135	SUSPECTED FAULTY	20170721003
CL600 2B16 (604)	ACTUATOR SEAL	295332009549750	DETERIORATED	20170731021
CL600 2B16 (604)	SIDE STAY ACTUATOR	604850019	LEAKING	20170821008
CL600 2B16 (604)	FLIGHT MANAGEMENT SYSTEM		FAULTY	20170814014
CESSNA				
152	NAVIGATION KX155	69010320101	FAILED	20170718010

Make/Model	Part Name	Part Number	Part Condition	SDR No.
152	PUSH-TO-TALK SWITCH	63966000	STICKY	20170706002
172I	INNER TUBE	S04502	SPLIT	20170718017
172I	EXHAUST RISER	99541004AWL	CRACKED	20170830009
172I	OUTLET SHROUD		CRACKED WELD	20170828005
172M	CARBURETOR		NOT REPORTED	20170925015
172N	NAVIGATION	69102442	FAILED	20170723001
172P	NOSE GEAR CAP BOLT	AN510A	MISSING	20170919011
182A	CARBURETOR		NOT REPORTED	20170915017
208B	PROPELLER DEICE SYSTEM		NOT REPORTED	20170804009
208B	BLEEDER SCREW	7900300	SERVICEABLE	20170718014
310R	LINK	86170046	BROKEN	20170824015
510	OUTFLOW VALVE	52812102	NOT REPORTED	20170919001
525A	PRE-COOLER	81612	RUPTURED	20170705009
650	COOLER	15861014	NOT REPORTED	20170705014
A185F	HINGE ASSEMBLIES	732100411	CORRODED	20170705020
A185F	COLLECTOR	75023847	UNSERVICEABLE	20170822025
A188B	NUTPLATE	NAS1068A4	WORN	20170712003
T206H	PIPE	40B22318	DISTORTED	20170913006
T240	FIREWALL SHUT-OFF CABLE	A700BLACK	SEIZED	20170919010
U206G	RUDDER BAR ASSEMBLY LEFT HAND	12604187	SEPERATED	20170828012
U206G	WHEEL ASSEMBLY MAIN	4075D	FLAT	20170725016
CONVAIR - CAN				
340	BOLT NOSE LANDING GEAR	9523185	NOT REPORTED	20170720025
340	LEFT HAND ELEVATOR TOP SKIN AT FS174	9015004101	FAILED	20170821013
340	RIGHT HAND LOWER WING SKIN		CRACKED	20170829014
340	CLAMP	4215AF1892	BROKEN	20170712005
340	TURNBUCKLE	90630771	UNSERVICEABLE	20170717018
340	TURNBUCKLE	90630771	UNSERVICEABLE	20170906013
440	AC GENERATOR	976J2525	UNSERVICEABLE	20170801004
440	FIRE LOOP	356680900	LOW RESISTANCE	20170717010

Make/Model	Part Name	Part Number	Part Condition	SDR No.
440	HYDRAULIC SYSTEM		NOT REPORTED	20170808014
DASSAULT				
FALCON 900EX	OUTER BEARING	L507949	DISINTEGRATED	20170815003
DEHAVILLAND - CAN				
DHC 2 MKI	MOUNT SUB-ASSEMBLY PILOTS OUTBOARD	C2CF2021	CRACKED	20170801006
DHC 2 MKI	FLOAT FITTING	6A02040004	CRACKED	20170919007
DHC 2 MKI	FLOAT FITTING	6A02040004	NOT REPORTED	20170817012
DHC 2 MKI	FLOAT FITTING	6A02040004	NOT REPORTED	20170817013
DHC 2 MKI	OIL TANK ASSEMBLY	C2LT321A	LEAKING	20170818003
DHC 3	RUDDER PEDAL SUPPORT ASSEMBLY OUTBOARD	C3CF1313	UNSERVICEABLE	20170711023
DHC 3	ELEVATOR CONTROL LEVER ASSEMBLY	C3CF4117	NOT REPORTED	20170821018
DHC 6 300	BOLT-WHEEL SUB ASSEMBLY ATTACHMENT	9520218	NEW	20170705017
DHC 6 300	FLAP SELECTOR	SKA1043A	NOT REPORTED	20170911012
DHC 6 300	STEERING ACTUATOR LEVER	711599	BROKEN	20170913003
DHC 8 102	HYDRAULIC TUBE	82920010373	FAILED	20170811005
DHC 8 102	NOSE LANDING GEAR CYLINDER	881411	CRACKED	20170919003
DHC 8 102	VERTICAL STABILIZER		PERFORATED	20170822017
DHC 8 102	GAUGE		FAULTY	20170725001
DHC 8 106	MAIN LANDING GEAR HUB CAP	14005722	MISSING	20170711019
DHC 8 106	WIRE		CHAFFED	20170809002
DHC 8 201	SENSOR		FAULTY	20170814009
DHC 8 201	MAIN WHEEL TIRE		BLOWN TIRE	20170804012
DHC 8 202	BOLT	MS2125004014	SHEARED	20170925021
DHC 8 202	MAIN FUEL CONTROL		FAULTY	20170821002
DHC 8 301	ENGINE DRIVEN PUMP	570347	LEAKING	20170704014
DHC 8 301	BOLT	89315	SHEARED	20170706011
DHC 8 301	ANGLE	83500488103	CORROSION	20170831010

Make/Model	Part Name	Part Number	Part Condition	SDR No.
DHC 8 311	RELAY 3041-K6 WIRING		DAMAGED	20170823016
DHC 8 311	ACTUATOR FITTING	85411782	DETACHED	20170919002
DHC 8 311	MAIN LANDING GEAR TIRE		BLOWOUT	20170912003
DHC 8 311	FUEL HEATER		LEAKING	20170817019
DHC 8 311	PUSHROD	87620102019	LOOSE	20170727010
DHC 8 314	CONNECTOR	MS3474L188SW	SHORTED	20170821011
DHC 8 314	MASS BALANCE HINGE	85520262	CRACKED	20170818007
DHC 8 315	AUXILIARY FUEL TANK VALVE	AV24B1343D	SHORTED	20170825002
DHC 8 400	LANDING GEAR		NOT REPORTED	20170727016
DHC 8 400	KEYPAD	002542AT01201AD	SUSPECTED UNAPPROVED PART	20170928003
DHC 8 400	FLEX HOSE	AE7202941	LEAKING	20170905001
DHC 8 400	GROUND SERVICE FITTING	AE99116H	LEAKING	20170809001
DHC 8 400	HYDRAULIC CLAMP	M85025210	DETERIORATED	20170912002
DHC 8 400	HYDRAULIC LINE		DAMAGED	20170922006
DHC 8 400	LANDING GEAR OLEO	46100	FAULTY	20170704021
DHC 8 400	NOSE LANDING GEAR OLEO		LEAKING	20170727017
DHC 8 400	NOSE LANDING GEAR TRAILING ARM PIVOT PIN	472053	FAILED	20170818004
DHC 8 400	ACTUATOR		FAULTY	20170727011
DHC 8 400	FILTER		DIRTY	20170911001
DHC 8 400	HYDRAULIC FLEX HOSE	115503008	FAILED	20170922007
DHC 8 400	SELECTOR VALVE		FAULTY	20170814008
DHC 8 400	SOLENOID SEQUENCE VALVE		FAILED	20170822012
DHC 8 400	SOLENOID SEQUENCE VALVE	48302	FAULTY	20170905002
DHC 8 400	TARGET		ADJUSTED	20170911002
DHC 8 400	UPLOCK EXTENSION SPRING	465161	BROKEN	20170831015
DHC 8 400	ACTUATOR	478301	FAILED	20170811001
DHC 8 400	LOCK ACTUATOR HOSE	AE72029487221	LEAKING	20170804013
DHC 8 400	WHEEL SPEED TRANSDUCER		FAILED	20170717013
DHC 8 400	MAIN WHEEL		FAILED	20170704020

Make/Model	Part Name	Part Number	Part Condition	SDR No.
DHC 8 400	MAIN WHEEL AND TIRE		SEPARATED	20170706013
DHC 8 400	TIRE	DR0231T	FAILED	20170831017
DHC 8 400	TIRE	DR0231T	SEPARATED	20170802015
DHC 8 400	MAIN WHEEL	315731	FAILED	20170720019
DHC 8 400	NOSE LANDING GEAR LOCK SENSOR		FAULTY	20170717012
DHC 8 400	PROXIMITY SENSOR		FAULTY	20170920001
DHC 8 400	SENSOR BRACKET	475153	LOOSE	20170821014
DHC 8 400	SOLENOID SEQUENCE VALVE	483025	FAULTY	20170920002
DHC 8 400	#2 DOWNLINK SENSOR		SHORTED	20170906011
DHC 8 400	CONDUIT ASSEMBLY	82440841	BROKEN	20170728001
DHC 8 400	NOSE LANDING GEAR DOWN LOCK 2 WIRE HARNESS		OPEN CIRCUIT	20170825004
DHC 8 400	WEIGHT ON WHEELS		CORRODED	20170727015
DHC 8 400	DESICCANT FILTER		CONTAMINATED	20170724003
DHC 8 400	AFT BAGGAGE DOOR HANDLE		NOT LATCHED	20170919005
DHC 8 400	AFT BAGGAGE DOOR HANDLE		NOT LATCHED	20170919006
DHC 8 400	DOOR SEAL		DAMAGED	20170725007
DHC 8 402	AIR CYCLE MACHINE	8209063	FAILED	20170911018
DHC 8 402	FLOW CONTROL SHUT-OFF VALVE	8209026	FAILED	20170828011
DHC 8 402	CABIN PRESSURE CONTROLLER	92146A010401	FAILED	20170918005
DHC 8 402	AIR CYCLE MACHINE	8209063	NOT COOLING	20170720015
DHC 8 402	AC GENERATOR		FAULTY	20170803015
DHC 8 402	BEARING		FAILED	20170725015
DHC 8 402	BOLT		LOOSE	20170711009
DHC 8 402	AMPLIFIER FIRE CONTROL	47387203	SUSPECT UNAPPROVED PART	20170831011
DHC 8 402	SPRING		UNSERVICEABLE	20170912013
DHC 8 402	SPRING		UNSERVICEABLE	20170912014
DHC 8 402	FLAP CONTROL MODULE		FAILED	20170828004
DHC 8 402	SYNTHETIC RUBBER GROMMET	MS3548915	RAW MATERIAL	20170829012
DHC 8 402	HYDRAULIC LINE ASSEMBLY	B030212608	CHAFED	20170918004

Make/Model	Part Name	Part Number	Part Condition	SDR No.
DHC 8 402	HYDRAULIC PUMP	6617304	UNSERVICEABLE	20170822016
DHC 8 402	TIMER MONITOR		FAULTY	20170824007
DHC 8 402	PUSH ROD ASSEMBLY	468665	DISCONNECTED	20170829017
DHC 8 402	LOCK ACTUATOR ASSEMBLY NOSE LANDING GEAR	474001	UNSERVICEABLE	20170918011
DHC 8 402	FUSE ASSEMBLY SHUTTLE	60070511	CRACKED	20170918003
DHC 8 402	PARK BRAKE VALVE ASSEMBLY	60070503	DAMAGED	20170828003
DHC 8 402	ROLLER BEARING	6NBF817YJ	UNSERVICEABLE	20170804011
DHC 8 402	SEALED ROLLER BEARING	KRP50206VTZ	UNSERVICEABLE	20170808006
DHC 8 402	PROXIMITY SENSOR	401020101	FAILED	20170911003
DHC 8 402	WIRE		SHORTED	20170713018
DHC 8 402	WIRES		BURNT	20170911005
DHC 8 402	PITOT TUBE		FAULTY	20170712012
DHC 8 402	WIRE		FAULTY	20170804006
DHC 8 402	STOP FITTING DOOR	85329406107	UNSERVICEABLE	20170711014
DHC 8 402	AFT BAGGAGE DOOR SEAL	502213OR8SC09408	DAMAGED	20170925007
DHC 8 402	AFT BAGGAGE DOOR SEAL	5022131	NOT SEALING	20170811008
DHC 8 402	DOOR SEAL CONTROL VALVE	4100S03101	FAILED	20170815001
DHC 8 402	HINGE BRACKET ASSEMBLY	85547220	WORN	20170810002
DHC 8 402	WINDSHIELD	15790120	CRACKED	20170823014
DHC 8 402	AILERON SEAL	85730458	CRACKED	20170823018
DHC 8 402	ACCOUSTIC INLET DUCT		DISBONDED	20170727018
DHC 8 402	POWER CONTROL UNIT		FAULTY	20170725010
DHC 8 402	BYPASS VALVE	D2887955C	FAILED	20170802016
DHC 8 402	BYPASS VALVE	D2887955C	FAILED	20170914020
DIAMOND - AS				
DA 42	EXHAUST PIPE	527810H001401	CRACKED	20170726001
DA 62	ALL ENGINE COWLS		PEELING	20170912004
DIAMOND - CAN				
DA 20 C1	BOLT	AN310A	CORRODED	20170713014
DA 20 C1	IGNITION SWITCH	103572101	WORN	20170717017

Make/Model	Part Name	Part Number	Part Condition	SDR No.
DA 20 C1	SWITCH- IGNITION & STARTER	103572101	NOT REPORTED	20170706003
DOUGLAS				
DC3C	ELEVATOR HORNE	4115156	CRACKED	20170814013
EMBRAER				
EMB 505	DC GENERATOR ALTERNATOR		NOT REPORTED	20170720009
EMB 505	PRESSURE RELIEF SHUT-OFF VALVE	RYLB535053	UNSERVICEABLE	20170724004
ERJ 170 200 SU	FUEL TANK WIRING HARNESS	80261001	SEPARATED	20170912007
ERJ 170 200 SU	UPPER HINGE ASSEMBLY	17096137401	BROKEN	20170823015
ERJ 190 100 IGW	AIR CYCLE MACHINE	10007005	FAILED	20170719006
ERJ 190 100 IGW	PITCH TRIM		NOT REPORTED	20170810005
ERJ 190 100 IGW	AC SYSTEM		NOT REPORTED	20170918006
ERJ 190 100 IGW	PRESSURE RELIEF VALVE	2990075101	LEAKING	20170725002
ERJ 190 100 IGW	STEERING CONTROL MODULE	1855A000006	FAILED	20170808002
EUROCOPTER DEUT				
BK117 B 2	COLLECTIVE JACKSHAFT RETAINER	1173133001	CRACKED	20170906007
FAIRCHILD				
SA227AC	UP LIMIT SWITCH	602EN6026	NOT FUNCTIONING	20170911008
SA227AC	PITOT TUBE	126652	OBSTRUCTED	20170719017
SA227DC	NOSE GEAR ACTUATOR	2752010003	OUT OF ADJUSTMENT	20170816006
GULFSTREAM - ISRAEL				
ASTRA SPX	OIL TANK ASSEMBLY	30607205	CRACKED	20170824011
GULFSTREAM 200	OIL SYSTEM		NOT REPORTED	20170704004
GULFSTREAM - USA				
G IV	FLIGHT GUIDANCE CONTROL PANEL		FAULTY	20170705010
LOCKHEED				
188C	FLAP ASEMMETRY DETECTOR CABLE	8247615	BROKEN	20170804014
PILATUS - SW				
PC 12 47E	SEAT RECLINE ACTUATOR		NOT REPORTED	20170704024
PC 12 47E	WHEEL/SKI/FLOAT		NOT REPORTED	20170920008
PC 12 47E	RIGHT HAND WOW SWITCH PLUG	9717498213	CORRODED	20170928006

Make/Model	Part Name	Part Number	Part Condition	SDR No.
PC 12 47E	POWER WIRE	1L83B16	SEVERED	20170713021
PIPER				
PA24 250	RUDDER HINGE	2070702	BROKEN	20170825005
PA31 350	POLYPAK SEAL	486305	DETERIORATED	20170926008
PA31 350	FUEL PRESSURE PUMP	421135	UNSERVICEABLE	20170830008
PA31 350	HYDRAULIC CANISTER	460635	SHEARED	20170912006
PA44 180	BULKHEAD ASSEMBLY	86462002	CRACKED	20170925002
ROBINSON				
R44 II	ROD END	A1273	FAILED	20170906005
ROCKWELL COLLINS				
690A	MAIN WHEEL ASSEMBLY	3171A32400301	FLAT TIRE	20170829016
SIKORSKY				
S61N	COLLET	S614061419002	NEW	20170803017
S76A	PILOT COLLECTIVE STICK	7640201101041	WORN	20170920004
S76C	STABILIZER SUPPORT FITTING	7620904005103	CRACKED	20170727014
S92A	NOSE LANDING GEAR		JAMMED	20170718008
VIKING CANADA				
CL215 1A10	WATER DOOR	21533006855	RIPPED	20170802013
CL215 6B11 (CL415)	TIRE	156T66G1	IN SERVICE	20170718012
DHC 6 400	ELEVATOR CONTROL CABLE	EO690531	USED	20170803016
DHC 6 400	FUEL PRESSURE SWITCH	P18MH109	NEW	20170901013
DHC 6 400	FUEL PRESSURE SWITCH	P18MH109	NOT REPORTED	20170727021
DHC 6 400	FUEL PRESSURE SWITCH	P18MH109	NOT REPORTED	20170727022
DHC 6 400	FUEL PRESSURE SWITCH	P18MH109	USED	20170727019
DHC 6 400	FUEL PRESSURE SWITCH	P18MH109	USED	20170727020
DHC 6 400	FUEL PRESSURE SWITCH	P18MH109	USED	20170727023
DHC 6 400	FUEL PRESSURE SWITCH	P18MH109	USED	20170727024
DHC 6 400	FUEL PRESSURE SWITCH	P18MH109	NEW	20170929017
DHC 6 400	HYDRALIC HAND PUMP	9148D27	NEW	20170901014
DHC 6 400	CABLE - NOSE WHEEL STEERING	C6CF12425	USED	20170727025

Make/Model	Part Name	Part Number	Part Condition	SDR No.
DHC 6 400	LANDING GEAR		NOT REPORTED	20170717019
ALLISON				
250-C20	FUEL CONTROL UNIT	23070606	FAULTY	20170821023
250-C20	POWER TURBINE GOVERNOR	23065121	SEIZED	20170704022
250-C20B	POWER TURBINE GOVERNOR	23065123	UNSERVICEABLE	20170926003
250-C30P	TURBINE	23035128	NOT REPORTED	20170811009
250-C47B	COMPRESSOR		MAKING METAL	20170710019
250-C47B	SUPPORT SHAFT	6889158	REMOVED	20170810013
250-C47B	ELECTRONIC CONTROL UNIT	M25010696	FAULTY	20170920005
501-D13H	FUEL CONTROL UNIT	3300588	FAULTY	20170801012
501-D13H	FUEL CONTROL UNIT	3300588	MAKING METAL	20170810011
AVCO LYCOMING				
AEIO-360-A1B6	DISTRIBUTOR BLOCK ASSEMBLY	K3008	LOOSE	20170925017
AEIO-360-A1B6	DISTRIBUTOR BLOCK ASSEMBLY	K3822	DETACHED	20170719005
AEIO-360-A1B6	IMPULSE COUPLING	M3100	LOOSE	20170824014
AEIO-360-A1B6	IMPULSE COUPLING	M3100	LOOSE	20170925018
IO-320-B1A	IMPULSE COUPLING	M3529	LOOSE	20170720022
IO-360-L2A	IMPULSE COUPLING	M3163	BROKEN	20170911020
IO-360-L2A	IMPULSE COUPLING	M3163	LOOSE	20170720021
IO-360-L2A	IMPULSE COUPLING	M3163	LOOSE	20170720023
IO-360-L2A	IMPULSE COUPLING	M3163	LOOSE	20170720024
IO-360-L2A	IMPULSE COUPLING	M3163	LOOSE	20170907007
IO-360-L2A	MAGNETO IMPULSE COUPLING	M3163	WORN	20170803013
IO-360-L2A	CRANKSHAFT	SL36500A20	CRACKED	20170731017
IO-540	MAGNETO	106006169	LOOSE	20170713025
IO-540-AE1A5	ENGINE FUEL PUMP	62B26931	LEAKING	20170719010
IO-540-K1G5	CRANKSHAFT ASSEMBLY	76799	BROKEN	20170704011
O-235-L2C	CONNECTING ROD BUSHING	LW13923	BROKEN	20170913005
O-235-L2CM	SLICK MAGNETO	4381	FAULTY	20170821017

Make/Model	Part Name	Part Number	Part Condition	SDR No.
O-320-D2J	CYLINDER	05K2110	CRACKED	20170705019
O-320-E2D	EXHAUST VALVE	SL19001A	BROKEN	20170821005
O-320-H2AD	INTAKE VALVE PUSH ROD	LW15315	BENT	20170901001
O-540-J3C5D	MAGNETO	BL68256011	BROKEN	20170728004
TIO-540-J2BD	TURBO CHARGER	4091709001	UNSERVICEABLE	20170713023
TIO-540-J2BD	CRANKSHAFT IDLER GEAR ASSEMBLY	LW10292	CHIPPED	20170704012
CFM INTERNATIONAL				
CFM56-5A1	ENGINE		NOT REPORTED	20170911004
CFM56-7B26	ENGINE	CFM567B26	DAMAGED	20170906012
GARRETT				
TFE731-4R-2S	FUEL PUMP		NOT REPORTED	20170705012
TFE731-4R-2S	FUEL CONTROL		NOT REPORTED	20170705013
TPE331-10	1ST STAGE TURBINE WHEEL	31070791	BROKEN	20170921008
TPE331-6-252B	P2T2 SENSOR	8691691	NOT REPORTED	20170808016
TPE331-6-252B	P2T2 SENSOR	8691691	GOOD CONDITION	20170724012
GENERAL ELECTRIC				
CF34-3B	OIL PRESSURE		NOT REPORTED	20170915002
CF34-3B1	ENGINE	CF343B1	NOT REPORTED	20170801001
CF34-3B1	ENGINE	CF343B1	NOT REPORTED	20170804008
CF34-3B1	ENGINE	CF343B1	NOT REPORTED	20170810008
CF34-8C1	ENGINE	CF348C1	NOT REPORTED	20170811006
CF34-8C5	#1 ENGINE	CF348C5	NOT REPORTED	20170705004
CF34-8C5	FAN BLADE RETAINING PIN	4114T06P02	NOT REPORTED	20170711007
CF34-8C5B1	ENGINE	CF348C5B1	NOT REPORTED	20170816005
CF34-8C5B1	ENGINE	CF348C5B1	NOT REPORTED	20170705007
CF6-80C2B6F	ENGINE		NOT REPORTED	20170731012
HONEYWELL				
AS907-1-1A	NUMBER 3 BEARING		NOT REPORTED	20170911022
AS907-1-1A	COMPRESSOR		NOT REPORTED	20170825007
AS907-1-1A	ACTUATOR BOLT	NAS630413	FELL OUT	20170810012

Make/Model	Part Name	Part Number	Part Condition	SDR No.
AS907-2-1A	ENGINE		NOT REPORTED	20170724011
PRATT & WHITNEY-CAN				
JT15D-5	FUEL CONTROL		NOT REPORTED	20170713004
JT15D-5	BEARING BALL ANNULAR	310749701	UNSERVICEABLE	20170911016
JT15D-5	SCAVENGE TUBE		CRACKED	20170804001
JT15D-5D	COMPRESSOR		NOT REPORTED	20170822008
PT6A-114A	PROPELLER CONTROLS		NOT REPORTED	20170929001
PT6A-114A	ENGINE		NOT REPORTED	20170731005
PT6A-114A	FRONT FUEL PRESSURE TUBE ASSEMBLY	3027048	UNSERVICEABLE	20170718006
PT6A-114A	OIL PRESSURE		NOT REPORTED	20170713008
PT6A-135A	ENGINE		NOT REPORTED	20170914011
PT6A-27	REDUCTION GEAR BOX REAR HOUSING	3028282	UNSERVICEABLE	20170829009
PT6A-34	ENGINE		NOT REPORTED	20170829005
PT6A-34	LARGE EXIT DUCT	310926302	NOT REPORTED	20170901015
PT6A-34	ENGINE	PT6A34	NOT REPORTED	20170905008
PT6A-34AG	ENGINE		NOT REPORTED	20170731003
PT6A-41	1ST STAGE COMPRESSOR	3021911	FAILURE	20170808004
PT6A-42	ENGINE		NOT REPORTED	20170704007
PT6A-42	ENGINE		NOT REPORTED	20170713003
PT6A-42	ENGINE		NOT REPORTED	20170731009
PT6A-42	ENGINE		NOT REPORTED	20170830004
PT6A-42	ENGINE		NOT REPORTED	20170908003
PT6A-42A	ENGINE		NOT REPORTED	20170704001
PT6A-42A	ENGINE		NOT REPORTED	20170720007
PT6A-42A	ENGINE		NOT REPORTED	20170803001
PT6A-50	OIL PRESSURE		NOT REPORTED	20170713005
PT6A-52	ENGINE		NOT REPORTED	20170831003
PT6A-52	ENGINE		NOT REPORTED	20170914002
PT6A-60A	ENGINE		NOT REPORTED	20170727003

Make/Model	Part Name	Part Number	Part Condition	SDR No.
PT6A-60A	FUEL CONTROL UNIT	8061333	IN SERVICE	20170712010
PT6A-60AG	ENGINE		NOT REPORTED	20170929004
PT6A-62	ENGINE		NOT REPORTED	20170720001
PT6A-64	REDUCTION GEAR BOX REAR HOUSING	311292301	UNSERVICEABLE	20170925003
PT6A-65AG	ENGINE		NOT REPORTED	20170731002
PT6A-65AG	ENGINE		NOT REPORTED	20170823010
PT6A-66B	REDUCTION GEAR		NOT REPORTED	20170727007
PT6A-67AG	COMPRESSOR		NOT REPORTED	20170815009
PT6A-67AG	TURBINE		NOT REPORTED	20170823012
PT6A-67B	ENGINE		NOT REPORTED	20170830001
PT6A-67B	TORQUE INDICATING		NOT REPORTED	20170731006
PT6A-67D	PROPELLER GOVERNOR	8210410	FAULTY	20170905004
PT6A-67D	ENGINE		NOT REPORTED	20170822005
PT6A-67D	ENGINE		NOT REPORTED	20170914003
PT6A-67D	FUEL TUBE	3035618	CRACKED	20170831016
PT6A-67F	ENGINE		NOT REPORTED	20170823019
PT6A-67F	ENGINE		NOT REPORTED	20170921006
PT6A-67F	COMPRESSOR		NOT REPORTED	20170815008
PT6A-67P	ENGINE		NOT REPORTED	20170824004
PT6A-67P	OIL SYSTEM		NOT REPORTED	20170823007
PT6A-68	OIL SYSTEM		NOT REPORTED	20170823001
PT6B-36A	ENGINE		NOT REPORTED	20170824001
PT6B-37A	OIL SYSTEM		NOT REPORTED	20170822003
PT6C-67C	ENGINE TEMP INDICATOR		NOT REPORTED	20170822009
PT6C-67D	ENGINE		NOT REPORTED	20170908002
PT6T-3	ENGINE		NOT REPORTED	20170831001
PT6T-3	ENGINE		NOT REPORTED	20170929012
PW118	ENGINE		NOT REPORTED	20170914005
PW120A	PROPELLER FEATHERING		NOT REPORTED	20170713009
PW120A	OIL SYSTEM		NOT REPORTED	20170822013

Make/Model	Part Name	Part Number	Part Condition	SDR No.
PW120A	OIL PRESSURE		NOT REPORTED	20170823011
PW121	#8 BEARING	311149701	UNSERVICEABLE	20170719003
PW121	OIL SYSTEM		NOT REPORTED	20170831005
PW121	OIL SYSTEM		NOT REPORTED	20170704009
PW123	ENGINE		NOT REPORTED	20170720002
PW123	ENGINE		NOT REPORTED	20170724001
PW123	ENGINE		NOT REPORTED	20170727004
PW123	OIL SYSTEM		NOT REPORTED	20170803003
PW123	ENGINE OIL INDICATOR		NOT REPORTED	20170822004
PW123	GEARBOX		UNSERVICEABLE	20170828007
PW123B	ENGINE		NOT REPORTED	20170712002
PW123B	#15 BEARING	310703301	UNSERVICEABLE	20170901008
PW123B	OIL SYSTEM		NOT REPORTED	20170914008
PW123D	PROPELLER FEATHERING		NOT REPORTED	20170824002
PW123D	ENGINE		NOT REPORTED	20170824005
PW123D	ENGINE		NOT REPORTED	20170829004
PW123D	ENGINE		NOT REPORTED	20170921005
PW123D	HIGH PRESSURE BLADE	311560101	UNSERVICEABLE	20170915014
PW123D	OIL SYSTEM		NOT REPORTED	20170922002
PW123D	OIL SYSTEM		NOT REPORTED	20170929003
PW123D	BLEED VALVE		NOT REPORTED	20170823002
PW123E	OIL SYSTEM		NOT REPORTED	20170704008
PW123E	OIL SYSTEM		NOT REPORTED	20170914006
PW123E	OIL SYSTEM		NOT REPORTED	20170914007
PW123E	PACKING	ST3086110	NOT REPORTED	20170720003
PW124B	ENGINE		NOT REPORTED	20170713007
PW124B	ENGINE		NOT REPORTED	20170929008
PW124B	ENGINE	3041900	FAILURE	20170704013
PW127E	OIL SYSTEM		NOT REPORTED	20170824003
PW127E	OIL SYSTEM		NOT REPORTED	20170929005

Make/Model	Part Name	Part Number	Part Condition	SDR No.
PW127F	PROPELLER FEATHERING		NOT REPORTED	20170829007
PW127F	ENGINE		NOT REPORTED	20170803006
PW127F	OIL SYSTEM		NOT REPORTED	20170713011
PW127F	OIL SYSTEM		NOT REPORTED	20170829006
PW127F	OIL SYSTEM		NOT REPORTED	20170914001
PW127F	OIL SYSTEM		NOT REPORTED	20170914010
PW127J	PROPELLER FEATHERING		NOT REPORTED	20170823005
PW127J	OIL SYSTEM		NOT REPORTED	20170823003
PW127M	ENGINE		NOT REPORTED	20170713012
PW127M	ENGINE		NOT REPORTED	20170704005
PW127M	ENGINE		NOT REPORTED	20170731008
PW127M	ENGINE		NOT REPORTED	20170803002
PW127M	ENGINE		NOT REPORTED	20170804003
PW127M	ENGINE		NOT REPORTED	20170830003
PW127M	ENGINE		NOT REPORTED	20170831006
PW127M	ENGINE		NOT REPORTED	20170906002
PW127M	ENGINE		NOT REPORTED	20170907002
PW127M	ENGINE		NOT REPORTED	20170908005
PW127M	ENGINE		NOT REPORTED	20170914004
PW127M	OIL SYSTEM		NOT REPORTED	20170720004
PW127M	OIL SYSTEM		NOT REPORTED	20170727008
PW127M	OIL SYSTEM		NOT REPORTED	20170822006
PW127M	OIL SYSTEM		NOT REPORTED	20170822007
PW127M	ENGINE CONTROL		NOT REPORTED	20170822015
PW127M	ENGINE ELECTRONIC CONTROLLER		NOT REPORTED	20170804002
PW127M	OIL PRESSURE		NOT REPORTED	20170921004
PW1500G	ENGINE		NOT REPORTED	20170703004
PW1500G	ENGINE		NOT REPORTED	20170803011
PW1500G	ENGINE		NOT REPORTED	20170808011
PW1500G	ENGINE		NOT REPORTED	20170814004

Make/Model	Part Name	Part Number	Part Condition	SDR No.
PW1500G	ENGINE		NOT REPORTED	20170828001
PW1500G	ENGINE		NOT REPORTED	20170830005
PW1500G	ENGINE		NOT REPORTED	20170919008
PW1500G	ENGINE	PW1524G	NOT REPORTED	20170914017
PW1500G	OIL SYSTEM		NOT REPORTED	20170801002
PW1500G	OIL SYSTEM		NOT REPORTED	20170828006
PW1500G	OIL SYSTEM		NOT REPORTED	20170911009
PW1500G	OIL SYSTEM		NOT REPORTED	20170925001
PW1500G	FUEL PUMP		NOT REPORTED	20170804007
PW150A	OIL SYSTEM		NOT REPORTED	20170727001
PW150A	OIL SYSTEM		NOT REPORTED	20170727006
PW150A	AUXILIARY POWER UNIT ENGINE ASSEMBLY	4503067C	OVERSERVICED	20170926006
PW150A	AIR DISTRIBUTION		NOT REPORTED	20170823013
PW150A	ENGINE		NOT REPORTED	20170712001
PW150A	ENGINE		NOT REPORTED	20170713010
PW150A	ENGINE		NOT REPORTED	20170803007
PW150A	ENGINE	PW150A	FAILED	20170921011
PW150A	TURBINE		NOT REPORTED	20170929009
PW150A	OIL SYSTEM		NOT REPORTED	20170704006
PW150A	OIL SYSTEM		NOT REPORTED	20170713006
PW150A	OIL SYSTEM		NOT REPORTED	20170720005
PW150A	OIL SYSTEM		NOT REPORTED	20170720008
PW150A	OIL SYSTEM		NOT REPORTED	20170727002
PW150A	OIL SYSTEM		NOT REPORTED	20170727005
PW150A	OIL SYSTEM		NOT REPORTED	20170822002
PW150A	OIL SYSTEM		NOT REPORTED	20170822010
PW150A	OIL SYSTEM		NOT REPORTED	20170822011
PW150A	OIL SYSTEM		NOT REPORTED	20170823006
PW150A	OIL SYSTEM		NOT REPORTED	20170823009
PW150A	OIL SYSTEM		NOT REPORTED	20170829003

Make/Model	Part Name	Part Number	Part Condition	SDR No.
PW150A	OIL SYSTEM		NOT REPORTED	20170830002
PW150A	OIL SYSTEM		NOT REPORTED	20170907003
PW150A	OIL SYSTEM		NOT REPORTED	20170908004
PW150A	OIL SYSTEM		NOT REPORTED	20170914009
PW150A	OIL SYSTEM		NOT REPORTED	20170922001
PW150A	OIL SYSTEM		NOT REPORTED	20170927002
PW150A	OIL SYSTEM		NOT REPORTED	20170929002
PW150A	OIL SYSTEM		NOT REPORTED	20170929007
PW150A	OIL SYSTEM		NOT REPORTED	20170929011
PW150A	OIL SYSTEM		NOT REPORTED	20170929013
PW150A	ENGINE CONTROL		NOT REPORTED	20170822023
PW150A	OIL PRESSURE		NOT REPORTED	20170829001
PW150A	OIL TEMPERATURE		NOT REPORTED	20170822014
PW206B2	ENGINE		NOT REPORTED	20170803004
PW207E	ENGINE		NOT REPORTED	20170713002
PW210S	FUEL INDICATING		NOT REPORTED	20170824006
PW305A	ENGINE		NOT REPORTED	20170829002
PW305A	ENGINE		NOT REPORTED	20170907006
PW305A	ENGINE		NOT REPORTED	20170803005
PW305A	COMPRESSOR BLEED VALVE	31B575901	NOT REPORTED	20170713001
PW305B	ENGINE		NOT REPORTED	20170906003
PW305B	ENGINE CONTROL		NOT REPORTED	20170914012
PW306A	ENGINE		NOT REPORTED	20170929010
PW306A	OIL SYSTEM		NOT REPORTED	20170907005
PW306B	O-RING		NOT REPORTED	20170704003
PW306D	ENGINE		NOT REPORTED	20170929006
PW306D	ENGINE CONTROL		NOT REPORTED	20170713013
PW306D	FUEL DISTRIBUTION		NOT REPORTED	20170704010
PW307A	BLEED VALVE		NOT REPORTED	20170922003
PW308A	OIL SYSTEM		NOT REPORTED	20170822001

Make/Model	Part Name	Part Number	Part Condition	SDR No.
PW308A	ENGINE OIL INDICATOR		NOT REPORTED	20170823008
PW308C	ENGINE		NOT REPORTED	20170831002
PW308C	ENGINE		NOT REPORTED	20170921002
PW308C	OIL SYSTEM		NOT REPORTED	20170704002
PW535E	ENGINE		NOT REPORTED	20170914014
PW535E	ENGINE		NOT REPORTED	20170921003
PW545A	ENGINE		NOT REPORTED	20170823004
PW545A	ENGINE		NOT REPORTED	20170922005
PW545B	ENGINE		NOT REPORTED	20170906004
PW545B	ENGINE		NOT REPORTED	20170914013
PW615FA	ENGINE		NOT REPORTED	20170720010
PW615FA	OIL SYSTEM		NOT REPORTED	20170921001
PW901A	AUXILIARY POWER UNIT		NOT REPORTED	20170731007
PW901A	AUXILIARY POWER UNIT ENGINE		NOT REPORTED	20170918001
PW980A	AUXILIARY POWER UNIT OIL		NOT REPORTED	20170922004
PW980A	OIL SYSTEM		NOT REPORTED	20170906001
PRATT & WHITNEY-USA				
JT8D-17	OIL QUANTITY		NOT REPORTED	20170711020
PW1521G	ENGINE		NOT REPORTED	20170817001
PW1524G	ENGINE		NOT REPORTED	20170825003
PW1524G	VARIABLE FREQUENCY GENERATOR	1714624	NOT REPORTED	20170816001
PW4060	ENGINE		NOT REPORTED	20170824008
R-985-AN-14B	BEARING	9016	WORN	20170711018
R-985-AN-14B	CYLINDER	359354	SEPERATED	20170825008
ROLLS ROYCE - GY				
BR700-710A2-20	ENGINE		NOT REPORTED	20170808003
BR700-710A2-20	ENGINE		NOT REPORTED	20170928007
BR700-710A2-20	ENGINE CONTROL		NOT REPORTED	20170920006
BR700-710A2-20	ENGINE ELECTRONIC CONTROLLER	1520KDC05011	NOT REPORTED	20170911013
BR700-715A1-30	LOW PRESSURE TURBINE STAGE 3 BLADE	BRH10030	BROKEN	20170726007

Make/Model	Part Name	Part Number	Part Condition	SDR No.
BR700-715C1-30	FRONT HEATSHIELD	BRH18825	BROKEN	20170726008
TAY MK 611-8	HYDRAULIC PUMP CONTACTOR STAGE 7 VANE	JR58439	BROKEN	20170823020
ROLLS ROYCE - UK				
MERLIN 70	SUBSTANDARD PARTS		NOT REPORTED	20170912012
RB211-535E4-37	FUEL PUMP	BPU200MK2	UNSERVICEABLE	20170929016
ROLLS ROYCE - USA				
V-1650-7 PACKARD	SUBSTANDARD PARTS		NOT REPORTED	20170912011
TELEDYNE CONTINENTAL				
IO-470-L	MIXTURE CONTROL		NOT REPORTED	20170802010
IO-520-F	FUEL PUMP	64691923A	NOT REPORTED	20170711022
IO-520-F	IMPULSE COUPLING		DAMAGED	20170902001
IO-520-F	CAMSHAFT GEAR	631845	NOT REPORTED	20170720017
IO-550-N	CYLINDER PISTON PIN	630046	BROKEN	20170705018
LTSIO-360-EB	CONNECTING ROD BOLT	655959	INCORRECT	20170821016
LTSIO-360-KB	THROUGH-BOLT	65242092	BROKEN	20170719016
O-520-FTS	TRANSFER TUBE	630628	LOOSE	20170719013
TSIO-360-FB	BEARING CONNECTING ROD	642338M010	NEW	20170816002
TURBOMECA				
ARRIEL 1D1	IGNITER PLUG	9550175400	FAULTY	20170922011
ARRIEL 1D1	MODULE 5 REDUCTION GEARBOX	70BM055420	INTERNAL LEAK	20170821022
AEROPRODUCTS				
A6441FN-606	PROPELLER GOVENOR	6506715	SERVICEABLE	20170728006
A6441FN-606A	PROPELLER REGULATOR	6505680	MAKING METAL	20170724008
A6441FN-606A	PROPELLER	6505849	LEAKING	20170907013
DOWTY ROTOL				
R408/6-123-F/17	BALL SET	6660003873	MAKING METAL	20170727009
R408/6-123-F/17	BEARING ASSEMBLY	697071003	WORN	20170803009
R408/6-123-F/17	PROPELLER	R4066123F17	LOOSE	20170913002
R408/6-123-F/17	TUBE ASSEMBLY BETA	697074004	LOOSE	20170817018

Make/Model	Part Name	Part Number	Part Condition	SDR No.
R408/6-123-F/17	BETA FEEDBACK TRANSDUCER	666000615	FAILED	20170905006
R408/6-123-F/17	PITCH CONTROL UNIT	6970773003	OVERSPEED	20170726002
R408/6-123-F/17	ROLL PIN		BROKEN	20170829013
HAMILTON STANDARD				
14SF-15	BLADE	SFA13S1P0A	FRACTURED	20170922008
HAMILTON SUNDSTRAND				
568F1	PROPELLER BLADE	R815505S3W	UNSERVICEABLE	20170927009
MT PROPELLER				
MTV-6-RCF	REPAIR BUSHING	A1251X	NOT SECURED	20170802009
ARTEX				
345	EMERGENCY LOCATOR TRANSMITTER	345	FAULTY	20170901016
DART AEROSPACE				
C3	REMOTE HOOK	C3	INCORRECTLY WIRED	20170811004
HONEYWELL				
AFCS	AUTOPILOT SERVO	65001900101	MALFUNCTION	20170928005
KANNAD				
S18450201C	HOOK AND LOOP STRAP		TORN	20170731010
SIKORSKY				
7635109600041	OIL SEALS		NOT REPORTED	20170822022
TECHNISONIC				
TEL82	EMERGENCY LOCATOR TRANSMITTER	TEL82	FAULTY	20170808012