

**Seasonal Outlook  
Gulf of St Lawrence, East Newfoundland Waters and  
Labrador Coast  
Winter 2012-2013**



**Issued by Canadian Ice Service of  
Environment Canada  
3 December 2012**

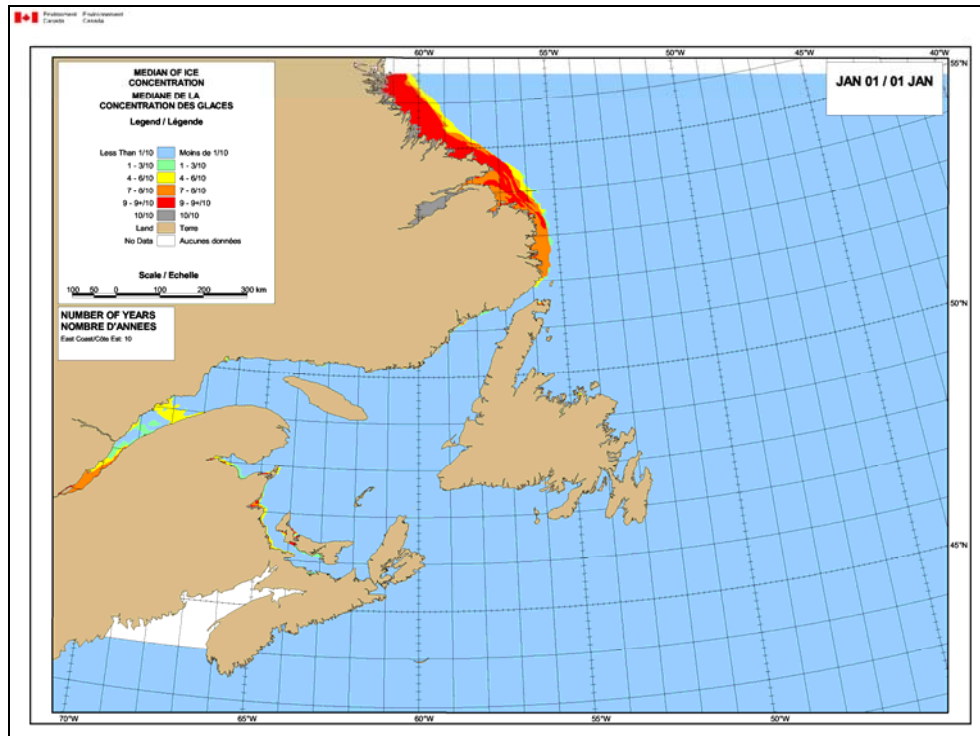


Figure 1: Expected ice conditions – 1 January 2013

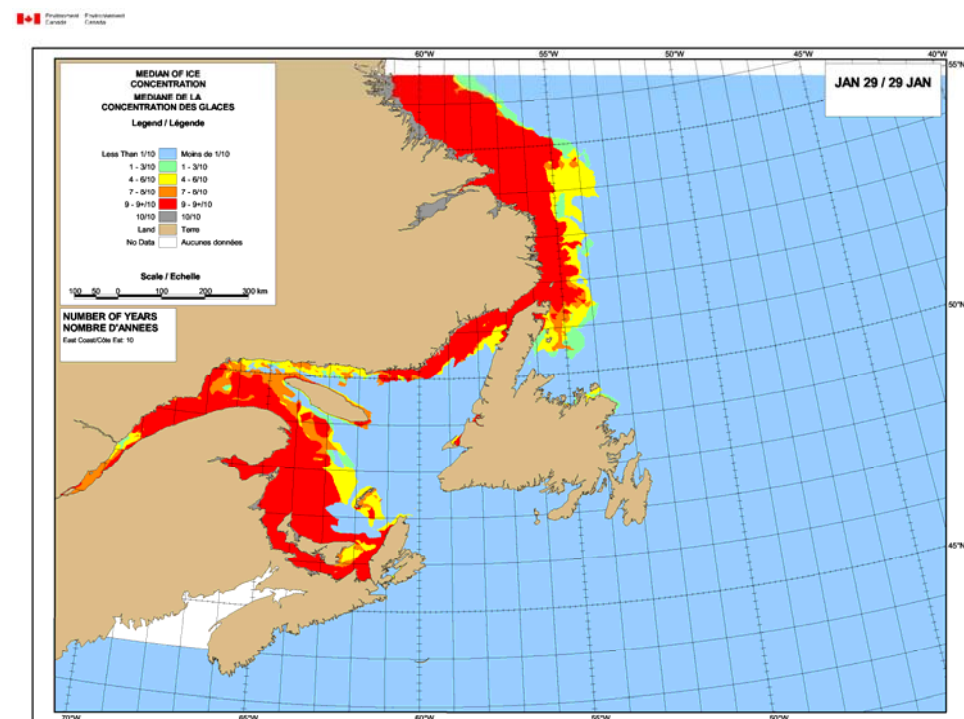
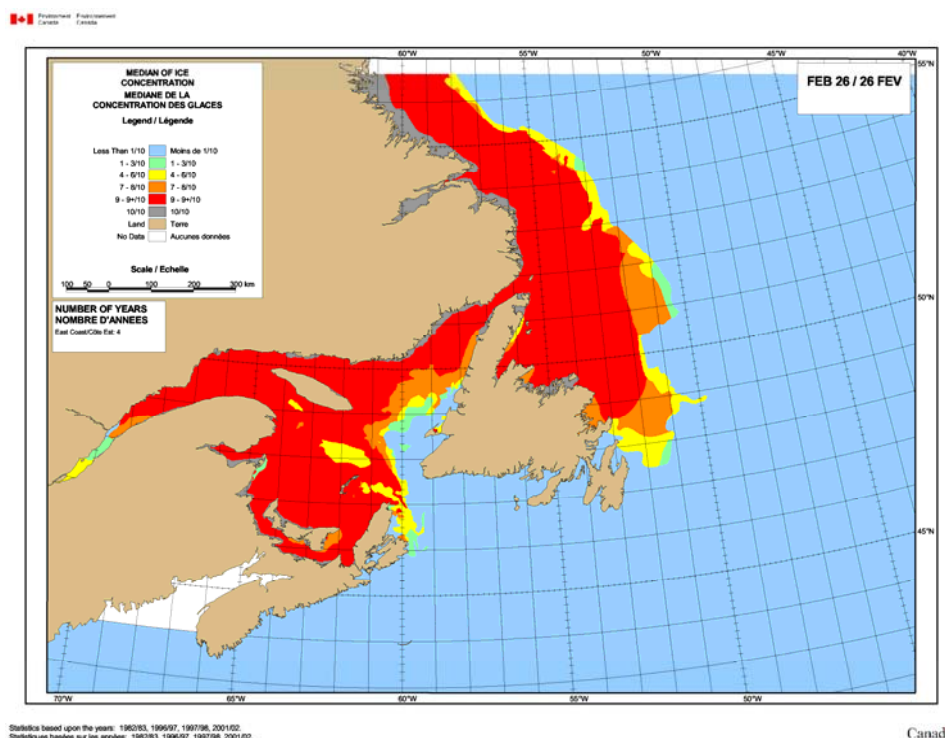


Figure 2: Expected ice conditions – 29 January 2013



**Figure 3: Expected ice conditions – 26 February 2013**

## **Gulf of St-Lawrence**

### **Winter temperature and ice forecasts**

Average air temperatures are expected to be above normal for December, January and February. Less ice than normal is expected.

### **The Estuary.**

Outlook for December...New and grey ice developing near Sept-îles. Elsewhere a few strips and patches of new ice developing mostly in the second week and onward. Areas of close pack new and grey ice developing along the south shore west of the Saguenay at the end of the month.

Outlook for January...Areas of close to very close pack new and grey ice are expected to develop in the eastern portion of the estuary by mid-month and consolidated grey and grey-white ice is expected to be present along portions of the shore. At the end of the month, close to very close pack new and grey ice is forecast on the estuary. Strips and patches of new and grey ice are forecast to reach Anticosti Island. Some grey-white ice will form along portions of the south shore. The fast ice, including near Sept-Îles, will thicken to the first-year ice stage.

Outlook for February...Close to very close pack grey and grey-white ice is expected. Some first-year ice should also be present mostly along the south shore.

### **Chaleur Bay southward to Northumberland Strait.**

Outlook for December...Ice free to open water except new ice in the western end of Chaleur Bay. At the end of the month, new ice will be found along the shores. Consolidated grey ice will be present in shallower coastal waters, including the shores of Miramichi Bay, near Miscou Island and around Prince Edward Island.

Outlook for January...By about mid-month, consolidated grey-white ice is expected to be present in shallower waters. Close pack new and grey ice is forecast to be present in Chaleur Bay, within 20 nautical miles of the New Brunswick coast, and in Northumberland Strait west of Pictou. A few tenths of grey-white ice should form in the pack ice after mid-month. Near the end of January, fast ice in shallower bays, including around Miscou Island and in Miramichi Bay, will thicken to the first-year ice stage. Areas of grey-white ice are expected in Chaleur Bay and in Northumberland Strait. The ice edge will extend beyond 60 nautical miles offshore.

Outlook for February...First-year ice will prevail in Northumberland Strait at mid-month, close to very close pack grey and grey-white ice with some first-year ice is expected elsewhere.

### **West coast of Newfoundland.**

Outlook for December...Ice free to open water except for some new ice along the shore present at times north of Point Riche.

Outlook for January...Some new and grey ice will develop in shallower coastal waters mostly after mid-month. At the end of the month, consolidated grey and grey-white ice in shallower coastal waters.

Outlook for February...In the third week, the pack ice edge is forecast to be just north of Bonne Bay and about 40 nautical miles offshore south of Bonne Bay. Grey-white with some first-year ice will be present in the ice pack. Otherwise open water except for consolidated grey-white and first-year ice in shallower coastal waters is expected south of Bonne Bay.

### **North Shore of Quebec.**

Outlook for December...Isolated areas of new and grey ice developing in shallower coastal waters.

Outlook for January...A narrow band of new ice is forecast to develop along the shore in the first week east of Havre-Saint-Pierre. In the second week open drift to close pack new and grey ice will extend to 10 to 20 nautical miles offshore. Consolidated grey ice will form in shallower coastal waters. By the end of January the ice edge will extend to about 40 nautical miles offshore and grey with some grey-white ice is expected in the pack ice.

Consolidated first-year ice should be present in shallower coastal waters.

Outlook for February...By mid-month close to very close pack grey and grey-white with some first-year ice should extend beyond 60 nautical miles offshore.

### **Elsewhere.**

Outlook for December...Ice free to open water except for narrow areas of new and grey ice developing in shallower coastal waters of the Îles de la Madeleine and the north shore of Prince Edward Island in the last week.

Outlook for January...In the last week new and grey ice will develop rapidly north of Prince Edward Island, around Îles de la Madeleine, around Anticosti Island and west of Cape Breton Island.

Outlook for February...At the end of the first week, the pack ice of will reach Îles de la Madeleine. Grey and grey-white ice is expected in the pack. After mid-month, grey-white

with some first-year ice will be found in the pack. At the end of February, the pack ice will reach Cape North and strips and patches of grey-white and first-year ice will drift towards Sydney.

## **East Newfoundland Waters and Labrador Coast.**

### **Winter temperature and ice forecasts.**

Average air temperatures are expected to be above normal for December, January and February. Normal ice conditions are forecast in East Newfoundland Waters and below normal ice conditions are expected along the South Labrador Coast.

### **Labrador Coast and Strait of Belle Isle.**

Outlook for December... Areas of new and grey ice along the coast.

In the third week, a narrow band of new with some grey ice is expected to be present along the coast from Cartwright to Groswater Bay and areas farther north. At the end of the month, areas of close to very close pack grey-white ice will be present along the shore north of Groswater Bay. New and grey ice will be found south of Groswater Bay and the pack ice edge will reach Battle Harbour.

Outlook for January... By mid-month, the ice edge will extend up to 60 nautical miles off the Labrador Coast except up to 90 nautical miles off the coast north of Groswater Bay. Mostly grey and grey-white ice should be present in the pack except for areas of predominantly first-year ice north of Groswater Bay. Very close pack new and grey ice with some grey-white ice is expected to cover the Strait of Belle Isle north of Flower's Cove. At the end of the month, close to very close pack grey-white and first-year ice is forecast to prevail in the ice pack and also cover most of the Strait of Belle Isle. The ice edge should extend 80 to 120 nautical miles off the Labrador Coast.

Outlook for February... First-year ice will prevail in the ice pack. The ice edge will extend to 120 to 180 nautical miles off the coast.

### **Lake Melville.**

Outlook for December... Some new ice in the southern portion and open water elsewhere. Becoming very close pack grey ice in the third week. At that time, consolidated grey ice should form along portions of the western and southern shores. Very close pack grey-white ice is expected in the last week with consolidated grey-white ice along the shores. Near the end of the month, consolidated grey-white ice will cover most of the lake.

Outlook for January... Consolidated with first-year ice.

Outlook for February... Consolidated with first-year ice.

### **Newfoundland.**

Outlook for December... Generally ice free to open water except for some new ice present at times near St. Anthony.

Outlook for January... By mid-January, new ice will develop in shallower waters in Notre Dame Bay. Consolidated areas of grey ice should be present south of Fogo Island and in Bay of Exploits. In the third week of January, strips and patches of new and grey ice are forecast to drift to the Grey Islands. At the end of the month, the ice edge of mostly grey-white ice with some first-year ice is forecast to be just north of the Baie Verte Peninsula. Fast ice in Notre Dame Bay will thicken to the grey-white ice stage. New ice is forecast in Bonavista Bay. The ice edge is expected to be near 70 nautical miles off the Northern Peninsula.

Outlook for February... The fast ice in Notre Dame Bay will thicken to the first-year ice stage in the first week. The ice pack of grey-white and first-year ice should reach Notre Dame Bay in the second week. At that time, consolidated grey and grey-white ice is expected in the shallower waters of Bonavista Bay. By the end of February the pack ice of grey-white and first-year ice is forecast to be east of St. John's.