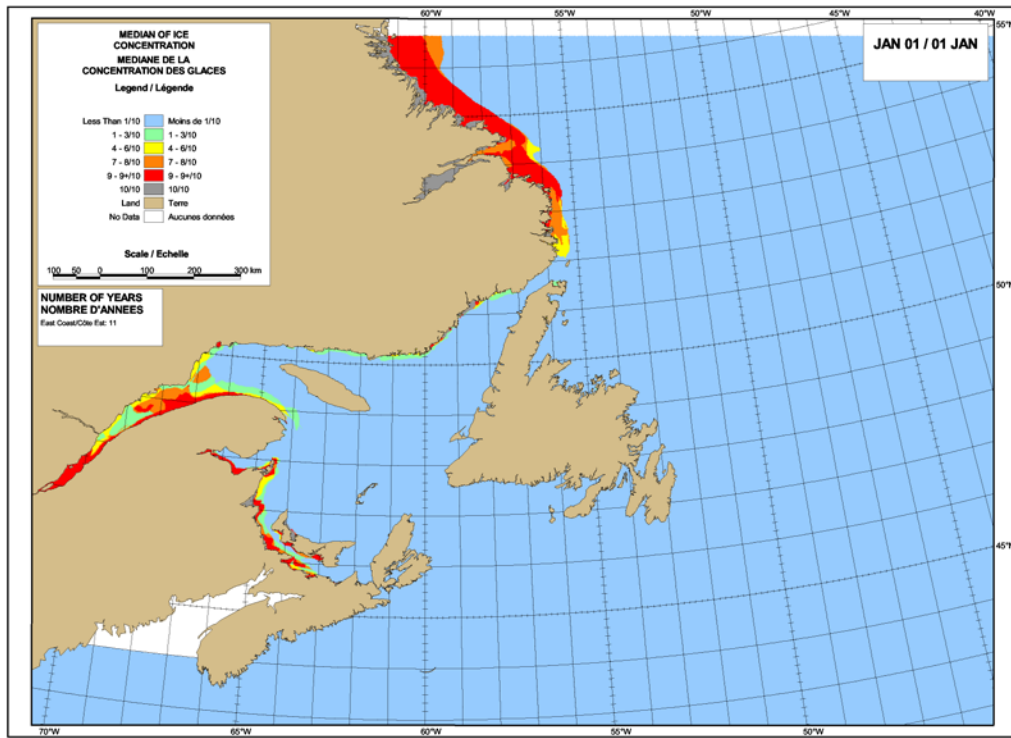


**Seasonal Outlook
Gulf of St Lawrence, East Newfoundland Waters and
Labrador Coast
Winter 2015-2016**

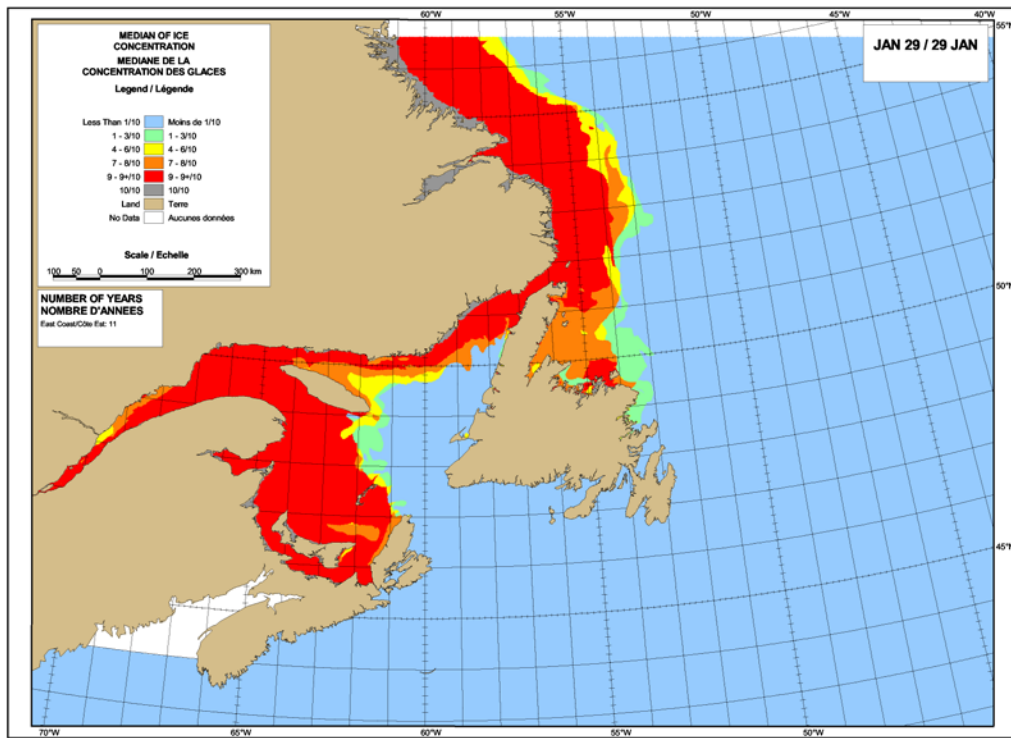


**Issued by Canadian Ice Service of
Environment Canada
1 December 2015**



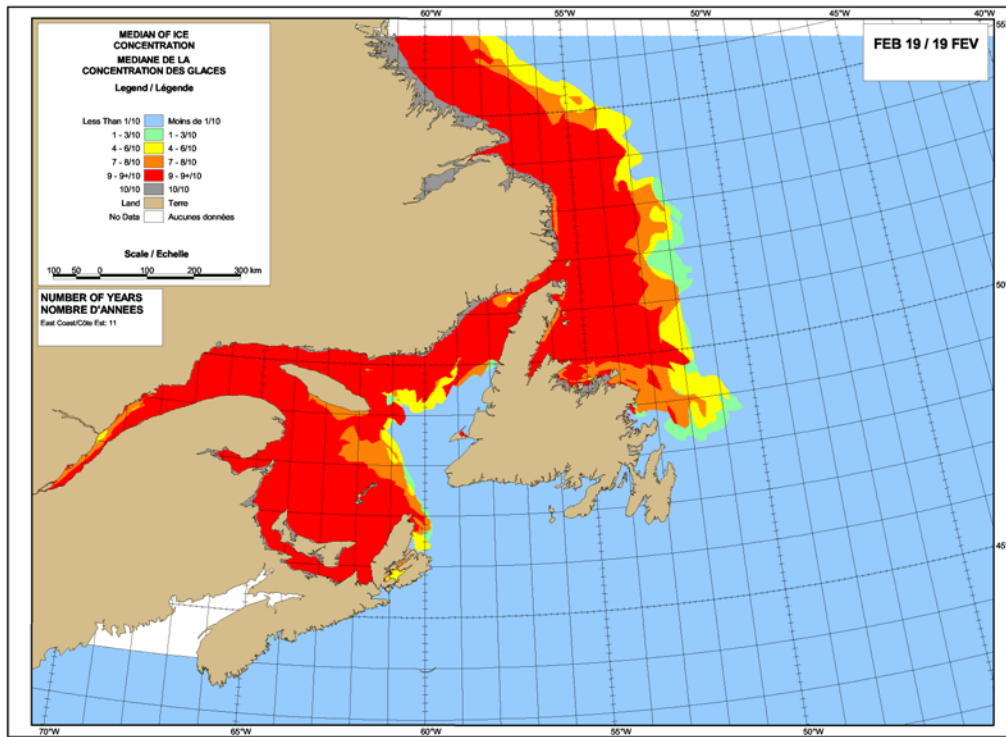
Statistics based upon the years: 1965/66, 1969/70, 1976/77, 1977/78, 1979/80, 1982/83, 1986/87, 1987/88, 1991/92, 2004/05, 2009/10.
 Statistiques basées sur les années: 1965/66, 1969/70, 1976/77, 1977/78, 1979/80, 1982/83, 1986/87, 1987/88, 1991/92, 2004/05, 2009/10.

Figure 1: Expected ice conditions – 1 January 2016



Statistics based upon the years: 1965/66, 1969/70, 1976/77, 1977/78, 1979/80, 1982/83, 1986/87, 1987/88, 1991/92, 2004/05, 2009/10.
 Statistiques basées sur les années: 1965/66, 1969/70, 1976/77, 1977/78, 1979/80, 1982/83, 1986/87, 1987/88, 1991/92, 2004/05, 2009/10.

Figure 2: Expected ice conditions – 29 January 2016



Statistics based upon the years: 1966/69, 1969/70, 1976/77, 1977/78, 1979/80, 1982/83, 1986/87, 1987/88, 1997/98, 2004/05, 2009/10.
Statistiques basées sur les années: 1966/69, 1969/70, 1976/77, 1977/78, 1979/80, 1982/83, 1986/87, 1987/88, 1997/98, 2004/05, 2009/10.

Canada

Figure 3: Expected ice conditions – 19 February 2016

Gulf of St-Lawrence

Winter temperature and ice forecasts

Average air temperatures are expected to be above normal for December, January and February. Below normal ice conditions are forecast.

The Estuary.

Outlook for December... In the third week, patches of new ice forming along the shore. By the end of the month, very open drift to open drift new and grey ice along the southern shore west of the Saguenay River. Narrow bands of new ice forming along the north shore and new and grey ice near Sept-Îles by the end of the month.

Outlook for January... Close pack to very close pack new and grey ice along the south shore in the first week. Very open drift new and grey ice over the remainder of the estuary. In the third week, close pack to very close pack new and grey ice over the estuary up to 40 nautical miles north of the Gaspé Peninsula with patches of grey-white ice along the south shore. By the end of the month, close pack to very close pack grey and grey-white ice expanding eastward to Anticosti Island and Sept-Îles.

Outlook for February... Close to very close pack grey and grey-white ice. Isolated areas of first-year ice developing along the south shore and in isolated bays.

Chaleur Bay southward to Northumberland Strait.

Outlook for December...In the third week, isolated areas of new ice forming in shallow coastal waters and sheltered bays. By the end of the month, patches of new ice with some grey ice developing along the shore. Consolidated grey ice in sheltered bays.

Outlook for January...In the second week, close pack to very close pack new and grey ice extending up to 80 nautical miles from the shore. Consolidated ice thickening to the grey-white stage. By the end of the month, close pack to very close pack grey and grey-white ice extending up to 150 nautical miles offshore. Consolidated ice thickening to the first-year ice stage.

Outlook for February...Close pack to very close pack grey and grey-white ice. Ice thickening to the first-year stage in the second week in Northumberland Strait.

West coast of Newfoundland.

Outlook for December... Ice free to open water except for patches of new ice forming in sheltered bays.

Outlook for January...Open drift new and grey ice developing in the second week along the shore north of Flower's Cove. By the end of the month, close pack to very close pack grey and grey-white ice north of Pointe Riche. Consolidated grey-white ice with some first-year ice thickening in isolated bays and inlets.

Outlook for February...In the third week, close to very close pack grey-white and first-year ice near Daniel's Harbour and northward. Elsewhere, open water except consolidated grey-white and first-year ice in sheltered bays and inlets along the coast.

North Shore of Quebec.

Outlook for December...Patches of new and grey ice forming in sheltered bays by the third week. Consolidated grey ice developing by the end of the month in isolated bays and inlets.

Outlook for January...Narrow bands of new ice developing along the shore in the first week. By mid-month, open drift to close pack new and grey ice extending up to 40 nautical miles from the shore northeast of Harrington Harbour. At the end of the month, consolidated ice thickening to first-year ice. Close pack to very close pack grey and grey-white ice extending approximately 40 to 60 nautical miles offshore.

Outlook for February...Close pack to very close pack grey and grey-white ice within 80 nautical miles of shore by the third week. Isolated areas of first-year ice developing in the pack ice.

Elsewhere.

Outlook for December...Ice free to open water except for isolated areas of new and grey ice in shallow coastal waters near the Îles de la Madeleine and in sheltered bays along the north shore of Prince Edward Island in the last week.

Outlook for January...Narrow bands of new and grey ice developing near Îles de la Madeleine, Anticosti Island and along the north shore of Prince Edward Island by mid-month. At the end of the month, close pack to very close pack grey and grey-white ice will approach Anticosti Island and Îles de la Madeleine.

Outlook for February...By mid-month, close pack to very close pack grey and grey-white ice extending up to 60 nautical miles east of Anticosti Island and Îles de la Madeleine. Open drift to close pack grey and grey-white ice northeast of Cape Breton by the fourth week. Areas of first-year ice developing in the pack ice.

East Newfoundland Waters and Labrador Coast.

Winter temperature and ice forecasts.

Average air temperatures are expected to be above normal for December, January and February over the East Newfoundland Waters and along the southern Labrador Coast. Near normal average air temperatures are forecast for this period along the northern Labrador Coast. Below normal ice conditions are forecast in East Newfoundland Waters and along the South Labrador Coast, whereas near normal ice conditions are forecast along the northern Labrador Coast.

Labrador Coast and Strait of Belle Isle.

Outlook for December... New and grey ice forming in sheltered bays and inlets. In the third week, very open drift to open drift new and grey ice developing along the coast north of Battle Harbour. At the end of the month, close pack to very close pack new and grey ice in Groswater Bay and open drift to close pack new and grey ice from Groswater Bay to Battle Harbour. Ice extending up to 40 nautical miles from the coast. Areas of grey-white ice developing in the pack ice.

Outlook for January... In the second week, open drift to close pack grey and grey-white ice drifting into the eastern entrance of the Strait of Belle Isle. After mid-month, close pack to very close pack grey and grey-white ice in the Strait of Belle Isle. Areas of first-year ice forming in Groswater Bay and northward. Ice extending up to 60 nautical miles offshore along the Labrador Coast. By the end of the month, close pack to very close pack grey-white and first-year ice extending up to 100 nautical miles from the coast and in the Strait of Belle Isle.

Outlook for February... Very close pack first-year ice in the Strait of Belle Isle and extending up to 150 nautical miles from the coast.

Lake Melville.

Outlook for December... Close to very close pack new and grey ice by the end of the first week. By mid-month, consolidated grey ice forming along the shores. At the end of the month, consolidated grey-white ice developing over the lake.

Outlook for January... Consolidated ice thickening to first-year stage in the first week.

Outlook for February... Consolidated with first-year ice.

Newfoundland.

Outlook for December... Ice free to open water except patches of new ice forming near St. Anthony at the end of the month.

Outlook for January... By mid-month, very open drift to open drift grey and grey-white ice drifting southward east of St. Anthony. Areas of consolidated grey ice forming in sheltered bays south of Twillingate. At the end of the month, close pack to very close pack grey and grey-white ice extending up to 80 nautical miles offshore east of St. Anthony. Patches of first-year ice developing in the pack ice. Open drift to close pack grey and grey-white ice south of St. Anthony to Cape Freels.

Outlook for February... By the second week, consolidated ice thickening to the first-year stage. By the third week, close pack to very close pack grey and grey-white ice with some first-year ice extending southward to Cape Freels. Open drift to close pack grey and grey-white ice over the northern section of Bonavista Bay. Ice extending up to 100 nautical miles east of Cape Freels by the end of the month.