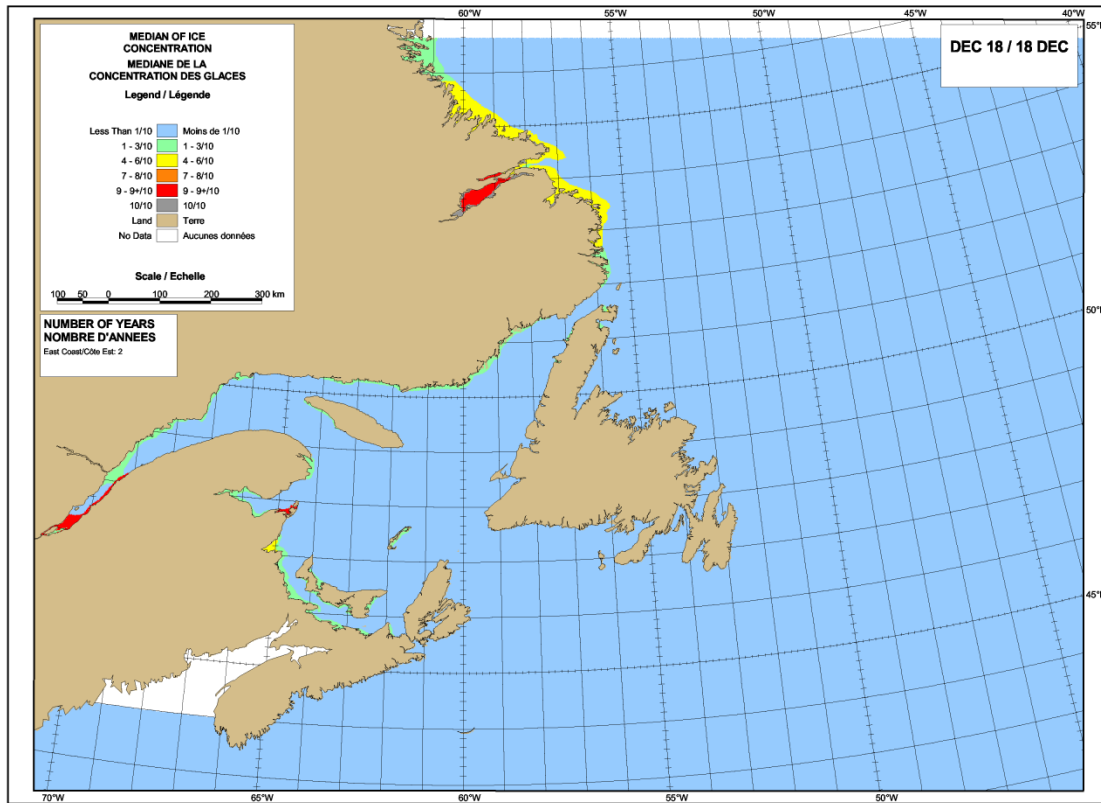


**Seasonal Outlook
Gulf of St Lawrence, East Newfoundland Waters and
Labrador Coast
Winter 2016-2017**



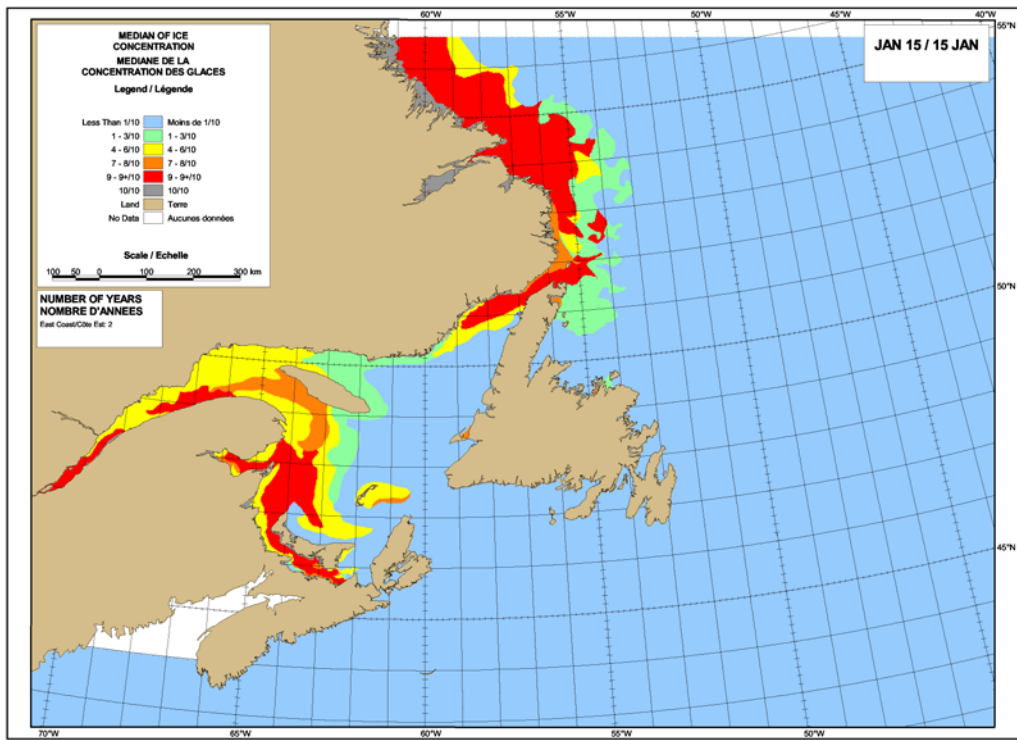
**Issued by Canadian Ice Service of
Environment Canada
1 December 2016**



Statistics based upon the years: 1998/99, 2012/13.
 Statistiques basées sur les années: 1998/99, 2012/13.

Canada

Figure 1: Expected ice conditions – 18 December 2016



Statistics based upon the years: 1996/99, 2012/13.
 Statistiques basées sur les années: 1996/99, 2012/13.

Figure 2: Expected ice conditions – 15 January 2017

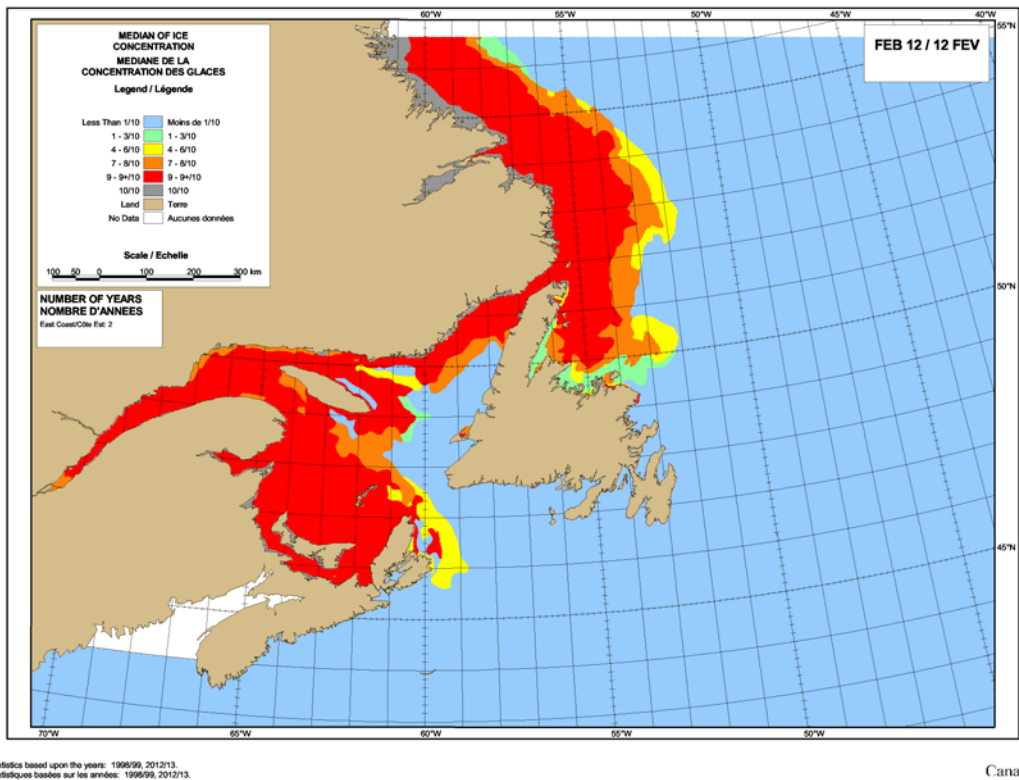


Figure 3: Expected ice conditions – 12 February 2017

Gulf of St-Lawrence

Winter temperature and ice forecasts

Average air temperatures are expected to be above normal for December, January and February. Below normal ice conditions are forecast.

The Estuary.

Outlook for December... Near mid-month, new ice forming along sections of the shore. Near the end of the month, open drift to close pack new and grey ice over the western section of the estuary and along the southern shore west of the Saguenay River. Isolated areas of new ice developing along the northern shore. Very close pack new and grey ice near Sept-Îles.

Outlook for January... By the second week, open drift to close pack new and grey ice along the southern shore. Open drift to close pack new and grey ice over the southern section of the estuary by mid-month. Consolidated grey ice near Sept-Îles. Close pack to very close pack new and grey ice over the southern section by the end of the month. Open drift to close pack new and grey ice over the northern section. A narrow band of grey and grey-white ice developing along the southern shore by the end of January.

Outlook for February... In the first week, close pack to very close pack grey and grey-white ice over the eastern section and open drift to close pack new and grey ice over the western section. Grey-white and first-year ice along the southern shore in the second week.

Chaleur Bay southward to Northumberland Strait.

Outlook for December... In the second week, new ice developing along sections of the shore in Chaleur Bay and in Miramichi Bay. Near the end of the month, close pack to very close pack new and grey ice in a narrow band along the shore. Consolidated grey ice in sheltered bays and inlets.

Outlook for January... In the first week, close pack to very close pack grey and grey-white ice extending up to 60 nautical miles from the shore and in Northumberland Strait.

Consolidated grey ice in Miramichi Bay. By the third week, close pack to very close pack grey and grey-white ice approximately 100 nautical miles from the shore. Consolidated ice thickening to first-year ice in isolated bays by the end of the month.

Outlook for February... In the first week, close pack to very close pack grey and grey-white ice with some first-year ice extending up to 140 nautical miles from the shore. Ice becoming predominantly first-year ice in Northumberland Strait and isolated bays in the second week.

West coast of Newfoundland.

Outlook for December... Ice free to open water except for isolated areas of new ice in sheltered bays near the end of the month.

Outlook for January... By mid-month, close pack to very close pack grey and grey-white ice along the coast north of Flower's Cove. Consolidated grey ice in isolated bays and inlets. By the end of the month, close pack to very close pack grey and grey-white ice north of Pointe Riche.

Outlook for February... In the second week, close pack to very close pack grey and grey-white ice with some first-year ice along the coast from Daniel's Harbour and northward. Very close pack grey-white ice in isolated bays south of Daniel's Harbour.

North Shore of Quebec.

Outlook for December... In the last week of the month, new and grey ice forming along isolated sections of the shore. Consolidated grey ice developing in isolated bays and inlets.

Outlook for January... By mid-month, close pack to very close pack new and grey-white ice extending up to 30 nautical miles from the shore northeast of Natashquan. Consolidated ice thickening to grey-white ice. By the end of the month, very close pack grey and grey-white ice extending up to 50 nautical from shore east of Harrington Harbour. Elsewhere, close pack to very close pack new and grey ice extending up to 30 nautical miles from shore.

Outlook for February... By mid-month, close pack to very close pack grey and grey-white ice extending approximately 60 nautical miles from shore. Some first-year ice developing in the pack ice northeast of Harrington Harbour by the end of the month.

Elsewhere.

Outlook for December... Ice free to open water except for isolated areas of new and grey ice developing near the Îles de la Madeleine and in sheltered bays along the north shore of Prince Edward Island in the last week.

Outlook for January... In the first week, open drift to close pack new and grey ice developing along the shore of Anticosti Island, the Îles de la Madeleine and the northern shore of Prince Edward Island. Near mid-month, close pack to very close pack grey and grey-white ice extending from the northern shore of Prince Edward Island to the southern shore of Anticosti Island. At the end of the month, open drift to close pack grey and grey-white ice north of Cape Breton Island and extending to the Îles de la Madeleine. Close pack to very close pack grey and grey-white ice with some first-year ice from the northern shore of Prince Edward Island to the Gaspé Passage.

Outlook for February... By mid-month, close pack to very close pack grey and grey-white ice with some first-year ice from the northern shore of Cape Breton to the Gaspé Passage. Open drift to close pack grey and grey-white ice with some first-year ice along the south-eastern shore of Anticosti Island.

East Newfoundland Waters and Labrador Coast.

Winter temperature and ice forecasts.

Average air temperatures are expected to be above normal for December, January and February over the East Newfoundland Waters and along the Labrador Coast. Below normal ice conditions are forecast.

Labrador Coast and Strait of Belle Isle.

Outlook for December... In the first week, new and grey ice developing along the coast near Cartwright and northward. By mid-month, a narrow band of new and grey ice along the coast from Battle Harbour and northward. Near the end of the month, open drift to close pack new and grey ice from Cartwright and northward and extending up to 30 nautical miles from the coast. Very open drift to open drift new and grey ice from Cartwright to Battle Harbour.

Outlook for January... In the first week, new and grey ice forming in sheltered bays in the Strait of Belle Isle. By the second week, close pack to very close pack grey and grey-white ice extending 50 nautical miles from the coast from Battle Harbour and northward. Very open drift to open drift grey and grey-white ice in the Strait of Belle Isle. After mid-month, areas of first-year ice in the pack ice from Battle Harbour and northward. Ice extending approximately 100 nautical miles from the coast. At the end of the month, close pack to very close pack grey and grey-white ice with some first-year ice extending up to 130 nautical miles off the coast and in the Strait of Belle Isle.

Outlook for February... By mid-month, very close pack grey-white and first-year ice extending up to 120 nautical miles from the coast. Near the end of the month, very close pack grey-white and first-year ice extending approximately 150 nautical miles from the coast.

Lake Melville.

Outlook for December... In the second week, close to very close pack new and grey ice. Consolidated grey ice in the extreme western section by mid-month. Near the end of the month, consolidated grey and grey-white ice.

Outlook for January... In the first week, consolidated grey-white ice thickening to first-year ice.

Outlook for February... Consolidated first-year ice.

Newfoundland.

Outlook for December... Ice free to open water. Near the end of the month, patches of new and grey ice developing near St. Anthony.

Outlook for January... In the second week, patches of new and grey ice forming along the coast in Notre Dame Bay and eastward to Cape Freels. Near mid-month, open drift to close pack new and grey ice from the Grey Islands to the Strait of Belle Isle. Consolidated grey ice forming in sheltered bays and inlets. By the end of the month, close pack to very close pack grey and grey-white ice extending approximately 100 nautical miles from the coast and approaching White Bay and Notre Dame Bay. Very open drift to open drift new and grey ice with some grey-white ice in White Bay and Notre Dame Bay.

Outlook for February... By mid-month, close pack to very close pack grey-white and first-year ice extending up to 120 nautical miles off the coast from the Strait of Belle Isle to Cape Freels. Open drift to close pack grey-white and first-year ice in White Bay and Notre Dame Bay. Near the end of the month, close pack to very close pack grey-white and first-year ice from the north-eastern coast of Newfoundland to the Strait of Belle Isle. Open drift to close pack grey-white and first-year ice in Bonavista Bay and extending up to 100 nautical miles east of Cape Freels.