

**Seasonal Outlook
Gulf of St Lawrence, East Newfoundland Waters and
Labrador Coast
Winter 2017-2018**



**Issued by the Canadian Ice Service of
Environment and Climate Change Canada
1 December 2017**

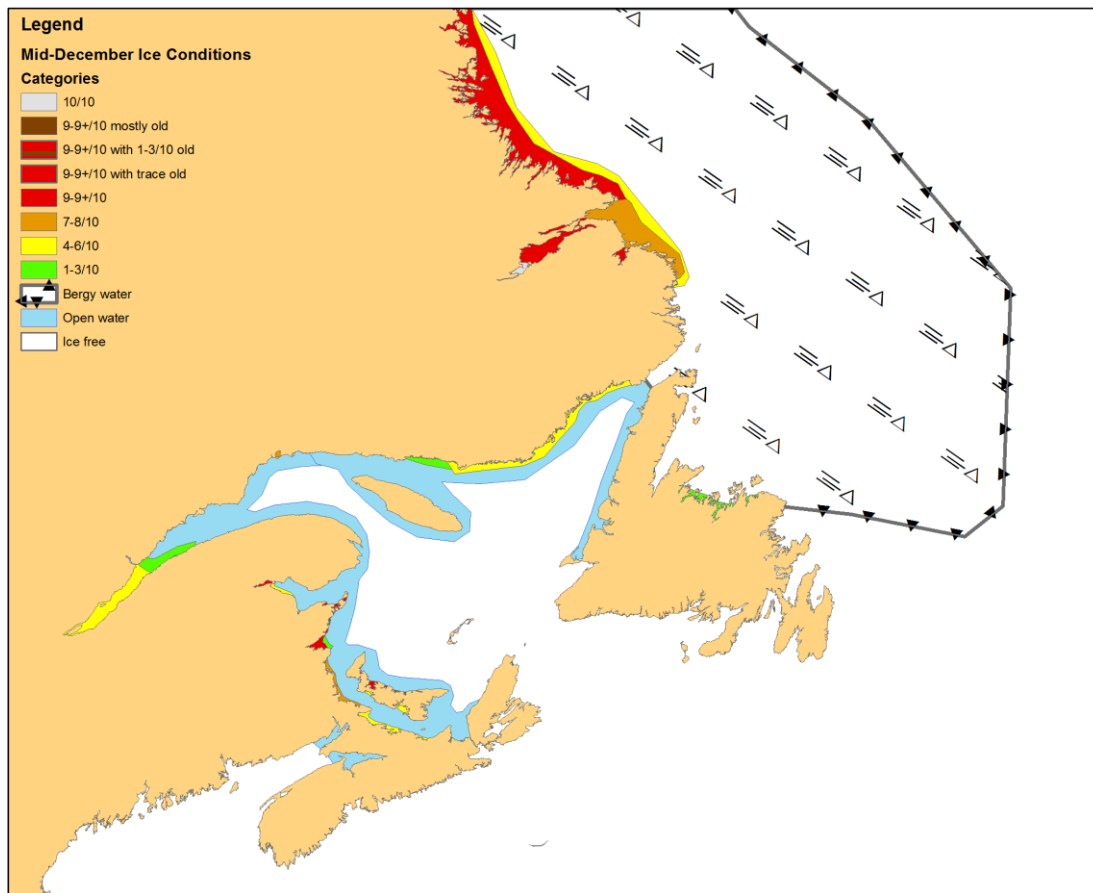


Figure 1: Expected ice conditions – mid-December 2017

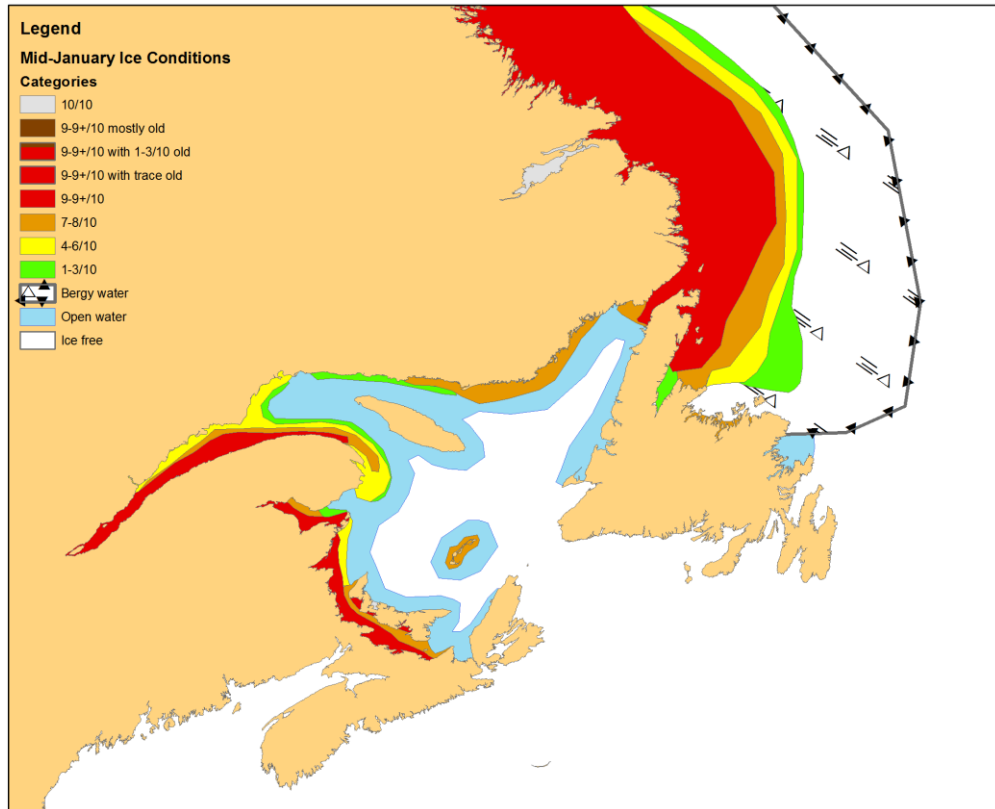


Figure 2: Expected ice conditions – mid-January 2018

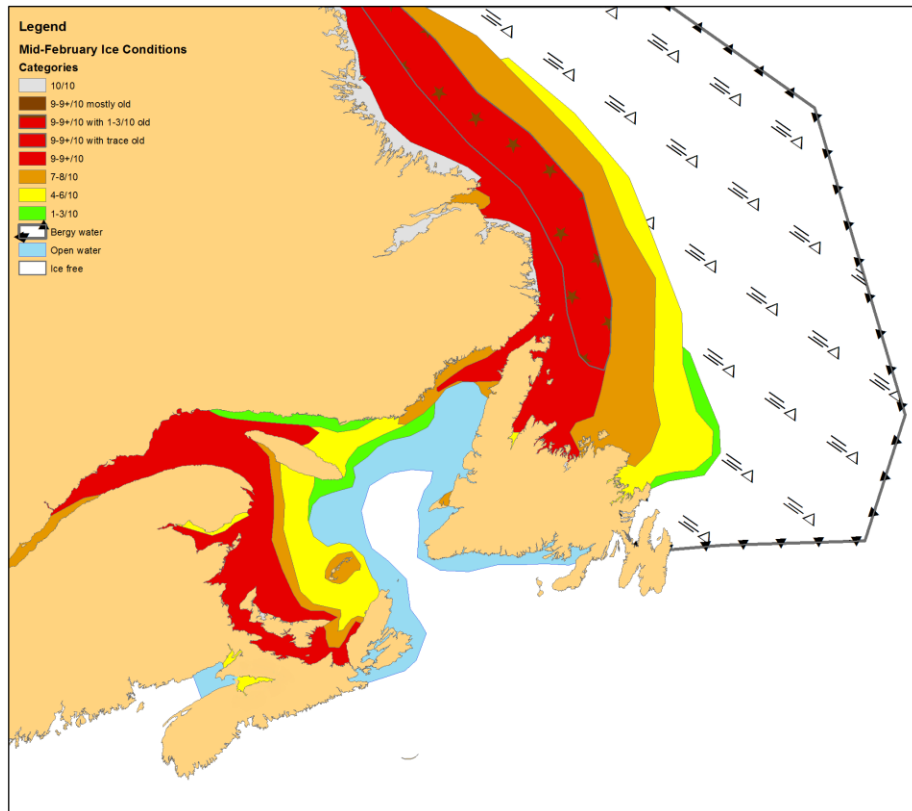


Figure 3: Expected ice conditions – mid-February 2018

Gulf of St-Lawrence

Winter temperature and ice forecasts

The surface air temperature is expected to be above normal for December, January and February except near normal over the estuary and northern section of the Gulf. Below normal ice conditions are forecast in general, with near normal ice extents in the estuary and northern section of the Gulf.

The Estuary.

Outlook for December...

December 10-31: Open water except 4-6 tenths of new and grey ice along sections of the shore.

Outlook for January...

January 1-7: Open water except 4-6 tenths of new and grey ice over the western section.

January 8-21: Open water except 7-8 tenths of new and grey ice over the western section and along the southern shore.

January 22-31: Open water except 9-9 plus tenths of grey and grey-white ice over the western section and along the southern shore.

Outlook for February...

February 1-14: 4-6 tenths of grey and grey-white ice except 9-9 plus tenths of grey-white and first-year ice over the western section.

February 15-28: 7-8 tenths of grey-white and first-year ice.

Chaleur Bay southward to Northumberland Strait.

Outlook for December...

December 10-31: Open water except 7-8 tenths of new and grey ice in sheltered bays and inlets.

Outlook for January...

January 1-15: 7-8 tenths of new and grey ice except 9-9 plus of grey and grey-white ice over Northumberland Strait. Consolidated grey-white ice in sheltered bays and inlets.

January 16-31: 9-9 plus tenths of grey and grey-white ice except 9-9 plus tenths of grey-white and first year ice in Northumberland Strait. Consolidated first-year ice in sheltered bays and inlets.

Outlook for February...

February 1-28: 9-9 plus tenths of grey-white and first-year ice. Consolidated first-year ice in sheltered bays and inlets.

West coast of Newfoundland.

Outlook for December...

December 10-31: Ice free to open water except isolated areas of new and grey ice in sheltered bays and inlets.

Outlook for January...

January 1-14: Open water except consolidated grey ice in sheltered bays and inlets.

January 15-31: Bergy water except 9-9 plus tenths of grey and grey-white ice along the coast north of Flower's Cove. Consolidated grey-white ice in sheltered bays and inlets.

Outlook for February...

February 1-14: Bergy water except 9-9 plus tenths of grey-white and first-year ice along the coast north of Pointe Riche. 1-3 tenths of new and grey ice near the Port au Port Peninsula.

February 15-28: Bergy water except 9-9 plus tenths of grey-white and first-year ice along the coast north of Flower's Cove. 4-6 tenths of grey and grey-white ice near the Port au Port Peninsula.

North Shore of Quebec.

Outlook for December...

December 10-31: Open water except isolated patches of new and grey ice along the shore. Consolidated grey ice in sheltered bays and inlets.

Outlook for January...

January 1-10: Open water except 9-9 plus tenths of new and grey ice extending 10 nautical miles from shore.

January 11-31: Open water except 9-9 plus tenths of grey and grey-white ice extending 20 nautical miles from shore.

Outlook for February...

February 1-10: Open water except 9-9 plus tenths of grey and grey-white ice extending 40 nautical miles from shore.

February 11-28: 9-9 plus tenths of grey-white and first-year ice.

Elsewhere.

Outlook for December...

December 10-31: Ice free to open water except for isolated areas of new and grey ice near the Îles de la Madeleine and in sheltered bays along the north

shore of Prince Edward Island.

Outlook for January...

January 1-15: Ice free to open water except isolated areas of 4-6 tenths of new and grey ice near Anticosti Island and the Îles de la Madeleine.

January 16-31: Ice free to open water except 9-9 plus tenths of new and grey ice near the Îles de la Madeleine along sections of Anticosti Island.

Outlook for February...

February 1-7: Open water except 4-6 tenths of grey and grey-white ice near the Îles de la Madeleine and eastward.

February 8-28: Open water except 9-9 plus tenths of grey and grey-white ice from Anticosti Island to the northwestern shore of Cape Breton Island.

East Newfoundland Waters and Labrador Coast.

Winter temperature and ice forecasts.

Average air temperatures are expected to be near normal for December and January, and below normal for February over the East Newfoundland Waters and along the Labrador Coast. Near normal ice conditions are forecast.

Labrador Coast and Strait of Belle Isle.

Outlook for December...

December 1-10: Bergy water except 1-3 tenths of new and grey ice along the coast near Cartwright and northward.

December 11-20: Bergy water except 7-8 tenths of new and grey ice extending 30 nautical miles from the coast near Cartwright and northward.

December 21-31: Bergy water except 9-9 plus tenths of grey and grey-white ice extending 40 nautical miles from the coast near Battle Harbour and northward. 1-3 tenths of new and grey ice in the Strait of Belle Isle.

Outlook for January...

January 1-10: 9-9 plus tenths of grey and grey-white ice extending 90 nautical miles from the coast from Cartwright and northward. 9-9 plus tenth of grey and grey-white ice extending 50 nautical miles from the coast from Cartwright to the Strait of Belle Isle.

January 11-20: 9-9 plus tenths of grey-white and first-year ice extending 100 nautical miles from the coast from Cartwright and northward. 9-9 plus tenths of grey and grey-white ice extending 80 nautical miles from the coast from Cartwright to the Strait of Belle Isle.

January 21-31: 9-9 plus tenths of grey-white and first-year ice extending 100 nautical miles from the coast from Battle Harbour and northward. 9-9 plus tenths of grey and grey-white ice in the Strait of Belle Isle.

Outlook for February...

February 1-14: 9-9 plus tenths of first-year ice including a trace of old ice extending 120 nautical miles from the Labrador coast. 9-9 plus tenths of grey and grey-white ice in the Strait of Belle Isle.

February 15-28: 9-9 plus tenths of first-year ice including a trace of old ice extending 150 nautical miles from the Labrador coast. 9-9 plus tenths of first-year ice in the Strait of Belle Isle.

Lake Melville.

Outlook for December...

December 1-7: 4-6 tenths of new and grey ice.

December 8-24: 9-9 plus tenths of grey and grey-white ice. Consolidated grey-white ice in the western section.

December 25-31: Consolidated grey-white and first-year ice.

Outlook for January...

January 1-31: Consolidated first-year ice.

Outlook for February:

February 1-28: Consolidated first-year ice.

Newfoundland.

Outlook for December...

December 1-31: Open water to ice free except 7-8 tenths of new and grey ice in isolated bays and inlets.

Outlook for January...

January 1-15: Open water except 4-6 tenths of grey and grey-white ice extending 50 nautical miles from the coast near St. Anthony. Consolidated grey ice in isolated bays and inlets.

January 16-31: 7-8 tenths of grey and grey-white ice extending 100 nautical miles from the coast. Bergy water in Notre Dame Bay and White Bay and open water from Cape Freels and southward. Consolidated grey-white ice in isolated bays and inlets.

Outlook for February...

February 1-10: 9-9 plus tenths of grey and grey-white ice extending 150 nautical miles from the coast from Cape Freels and northward. Consolidated first-year ice in isolated bays and inlets.

February 11-28: 9-9 plus tenths of grey-white and first-year ice with a trace of old ice extending 200 nautical miles from the coast from Bonavista Bay and northwards. Consolidated first-year ice in isolated bays and inlets.