

98-239



Environment
Canada

Environnement
Canada

Canada



NATIONAL WATER
RESEARCH INSTITUTE

INSTITUT NATIONAL DE
RECHERCHES SUR LES EAUX

TD
226
N87
No. 98-
239

Lagrangian Measurements of Accelerations in the
Crests of Breaking

By:

S. Kjeldson, P. Bonmarin, M. Skafel, W. Drennan

NWRI Contribution # 98-239

MANAGEMENT PERSPECTIVE

Title: Lagrangian Measurements of Accelerations in the Crests of Breaking Waves.

Authors: S.P. Kjeldsen, Norwegian Maritime Academy, Ladehammerveien 6, 7004 Trondheim, Norway; P. Bonmarin, IRPHE, IOA Laboratory, Case 903, 13288 Marseilles, France; M.G. Skafel, National Water Research Institute, P.O. Box 5050, Burlington, ON, L7R 4A6, Canada; W.M. Drennan, RSMAS, University of Miami, Miami, FL, USA

NWRI Publication No.: 98-239

Citation: Proc. 26th (1998) International Conference on Coastal Engineering, Copenhagen, 22-26 June 1998.

EC Priority /Issue: Accidental release of polluting substances threatening health and safety. Prevent the frequency/severity and environmental consequences of emergencies - ship capsizing and resulting spills.

Current Status: The occurrence of unusually large waves on the Great Lakes and on the oceans is a major factor in safety and pollution prevention (The sinking of Edmund Fitzgerald on Lake Superior and the sinking of the Ocean Ranger off Newfoundland are two examples where safety was compromised by unusually large waves). The internal water velocities and accelerations (and hence the forces on ships and offshore structures) are not adequately described with present models. As a result of laboratory tests at NWRI and IRPHE in Marseilles during 1994-7, a more complete description of the kinematics has been made. A new model has also been developed which better predicts the internal velocities under the crests of these unusually large waves. This work is reported here and in a companion paper presented to the International Offshore and Polar Engineering Conference in Montreal. The work was funded in part by a travel grant from NATO, contract no. 930137.

Next Steps: The work is being refined and will be submitted for journal publication to make the appropriate professional community aware of the improved modelling capability, thereafter the authors will investigate the need for further research on the subject.

LAGRANGIAN MEASUREMENTS OF ACCELERATIONS IN THE CRESTS OF BREAKING AND BROKEN WAVES.

Søren Peter Kjeldsen ¹, Pierre Bonmarin ², Michael G. Skafel ³, William M. Drennan ⁴.

Abstract.

The present investigation reports synoptic measurements and analysis of particle accelerations and kinematics of plunging crests in deep water wave groups. The unexpected occurrence of unusually large waves has been documented on numerous occasions. While little is known about the statistics of these waves, even less is known of the dynamical conditions under which they occur. Nonlinear interactions among individual waves travelling within a group on an opposing current have been identified as an important mechanism in the formation of giant waves in deep waters in the ocean. In this study, the non-linear packet-focusing technique is used to generate steep, deep water plunging waves in two laboratory flumes. In one of these flumes the plunging breakers were generated on opposing currents. The kinematics of these waves are measured just up-wave of the onset of plunging, and these results are compared to those of a superposition model, a modified stretching model, and a model based on Stokes 3rd order theory combined with a linear wave spectrum for an irregular sea on an opposing current, developed for the present study. The present model represents the velocity beneath the plunging breakers significantly better than the two other models.

1. Introduction.

Breaking waves play an essential role in air-sea interactions, and in assesment of impact loads on both fixed and floating coastal structures, platforms and ships see (Kjeldsen, 1997). Further breaking waves are very important for mixing and spreading of oil pollution in the upper surface layers of the sea. The dynamic action of the crest of a plunging breaker thus becomes particularly important. Even now when theoretical and numerical treatments of the breaking problem have progressed, controlled experimental measurements for development and calibration of numerical ocean basins are needed. The present investigation reports synoptic measurements and analysis of particle accelerations and kinematics of plunging crests. Furthermore a third order simulation technique is developed in order to predict wave kinematics in extreme waves occurring in irregular seas containing coalescing wave groups.

¹ The Norwegian Maritime Academy, Ladehammerveien 6. 7004 Trondheim, Norway.

² IRPHE Institute. IOA Laboratory. Avenue de Luminy. Case 903. 13288 Marseilles.France.

³ National Water Research Institute. P.O. Box 5050, Burlington. ON. L7R 4A6, Canada.

⁴ Rosentiel School of Marine and Atmospheric Sciences. University of Miami. FL 33176 U.S.A.

2. Experiments.

One series of experiments were performed in the large (40 m long) Air-Sea Interaction Simulation Facility of the I.O.A. laboratory of the I.R.P.H.E. Institute, located in Marseille. The wave generation technique developed by (Kjeldsen 1982) was used for production of plunging breaking crests in deep water wave groups. A visualization technique (Bonmarin 1989) makes the wave profile visible and an associated image analysis process allows measurements of both the water surface geometry, crest front steepness and asymmetry (Kjeldsen & Myrhaug 1978), (IAHR/PIANC 1986), as well as detailed measurements of accelerations of tracer particles dragged away by breaking and broken waves. Ten experiments designated by the reference of A11 to A21 were performed.

Another series of experiments were performed in the large wave tank at the Canada Centre for Inland Waters. The tank dimensions are 100 m in length, 4.5 m in width and the water depth for all runs were 1 m. The water surface elevations were measured using four capacitance type water surface piercing wave staffs; two were fixed in the tank and two were on a movable carriage. The velocity was measured with an acoustic Doppler current meter (Sontek ADV-1) mounted on the carriage. The surface elevation data and the velocity data for each run were logged on the current meter computer at 25 Hz. A mean flow in the tank, in the opposite direction to the wave travel, was generated with a pump. The flow entered the tank through a diffuser in the floor about 36 m downwave from the measuring station, and left the tank immediately in front of the wave board, also through a floor diffuser. Mean flows (U_M) of 0.04 and 0.095 m/sec were used for the experiments.

3. Results.

A Lagrangian measurement technique is needed in order to measure particle accelerations accurately in non-linear waves, see (Longuet-Higgins 1986.) In order to develop such a technique the wave-following properties of the tracer particles were mapped. A calibration experiment was performed with a symmetric regular wave with steepness $ak = 0.31$. Fig 1 shows the measured trajectory, and a theoretical trajectory predicted by second order wave theory. A significant Stokes drift in agreement with the theory was obtained. This relative good agreement between experiment and theory validates the choice of the floating particles. In the breaking waves the different steps of the measurements were i) the reconstruction of the trajectory of the floating particles, ii) measurements of their celerity, and iii) the measurement of their acceleration, these two last measurements being deduced from the trajectory. Fig. 2 shows an example of surface elevation and location of tracer particles in a plunging breaker developing in deep water. Fig. 3 shows the reconstruction of the trajectories of floating particles, one of them colliding with a breaking crest. Fig 4 shows an example of measured horizontal velocities of two particles P2 and P3, shown in the experiment A15, as it develops in Fig. 2. The horizontal velocities are normalized with the wave phase velocity c . Particle P3 reaches a horizontal velocity equal to the wave phase velocity, as can be seen.

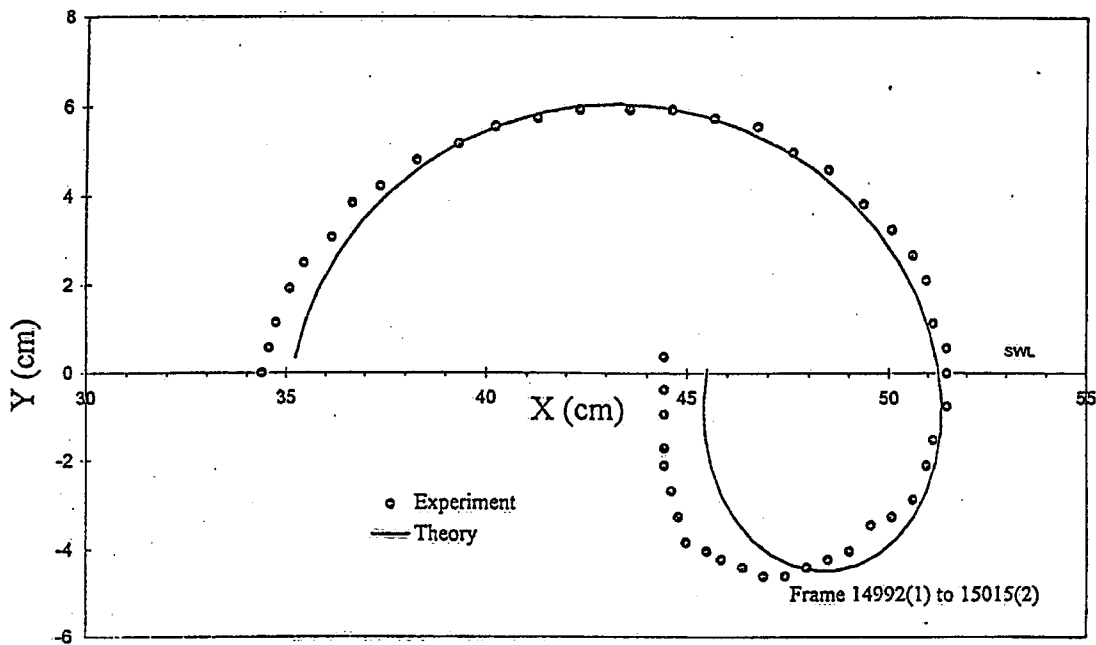


Fig. 1. Comparison of trajectories of a floating particle moving on a quasi symmetrical crest ($ak=0.31$), and second order Stokes wave theory.

Fig 5 then shows measured horizontal accelerations of the particles P2 and P3, normalized with the gravity acceleration. The horizontal acceleration of particle P3 reaches a value of 1.35 times the gravity acceleration

Particle P3 reaches a vertical acceleration 0.78 times the gravity acceleration. Fig 6 shows the total acceleration of this particle. The acceleration of the floating particles increases rapidly in the non-breaking region and reaches a maximum value at the time when the overturning part of the crest collides with them. Total acceleration vectors up to 1.55 g were measured at the free surface. Maximum acceleration and maximum velocity are nearly in phase in these breaking waves, leading to large wave forces, and a significant capsizing potential if encounter happens with small floating objects (small boats, rescue floats or wave buoys).

If wave forces are computed on structural elements of a steel jacket or a tension leg platform then both the particle velocity and the acceleration must be known, and data from the established data bank are used for calibration of the 3-order kinematic model developed in this study for extreme waves in irregular seas with or without currents.

Wave particle accelerations in non-linear waves can not easily be deduced from Eulerian measurements. The wave crests show an asymmetrical shape at the breaking onset (Kjeldsen 1997), and work is in progress to establish a correlation between surface particle accelerations and wave asymmetry, see (Kjeldsen, Bonmarin & Duchemin 1998).

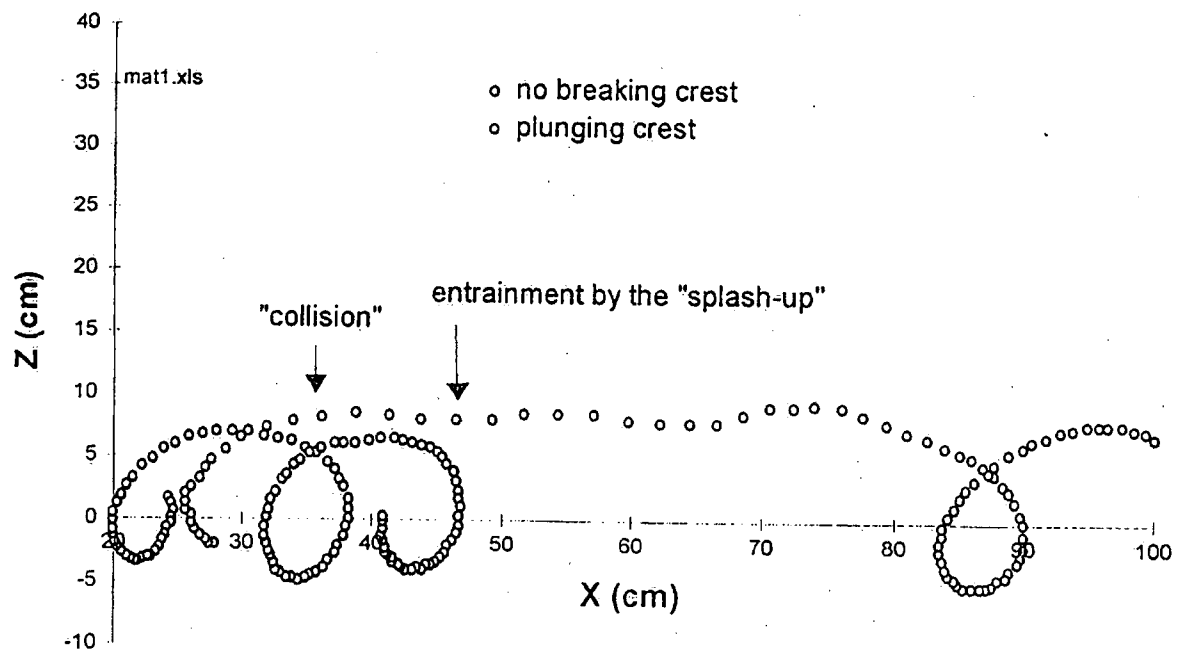


Fig. 3. Trajectory of a floating particles.

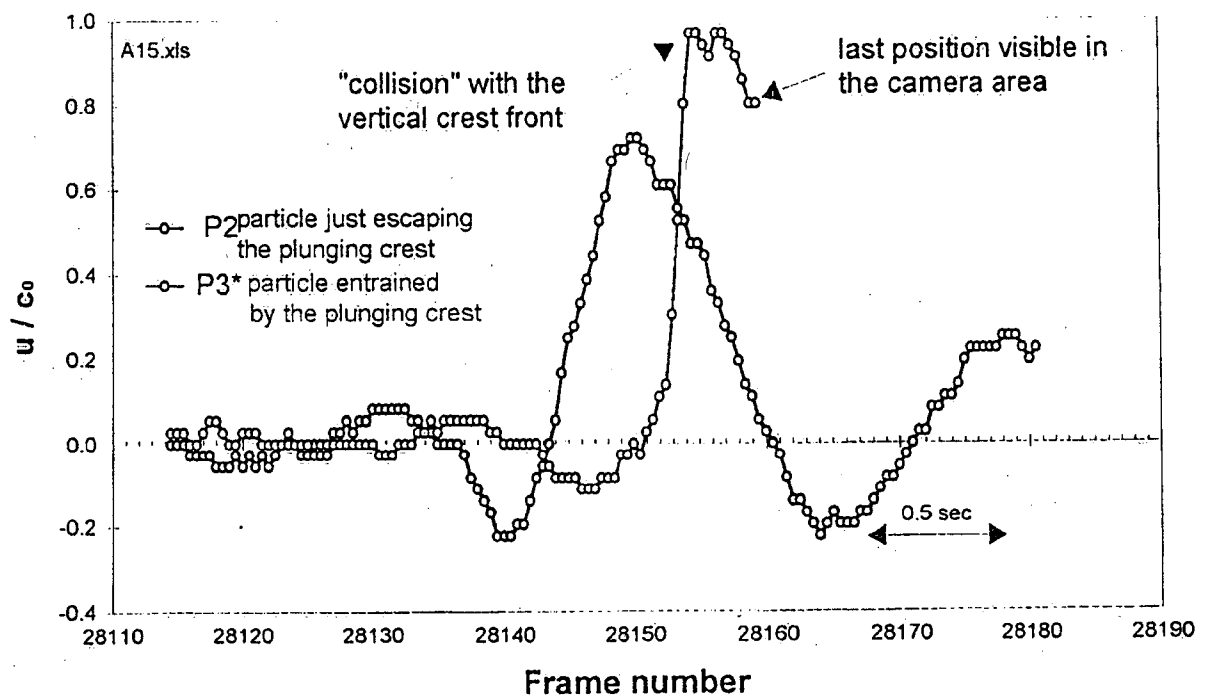


Fig. 4. Horizontal velocity of floating particles. Experiment A15.

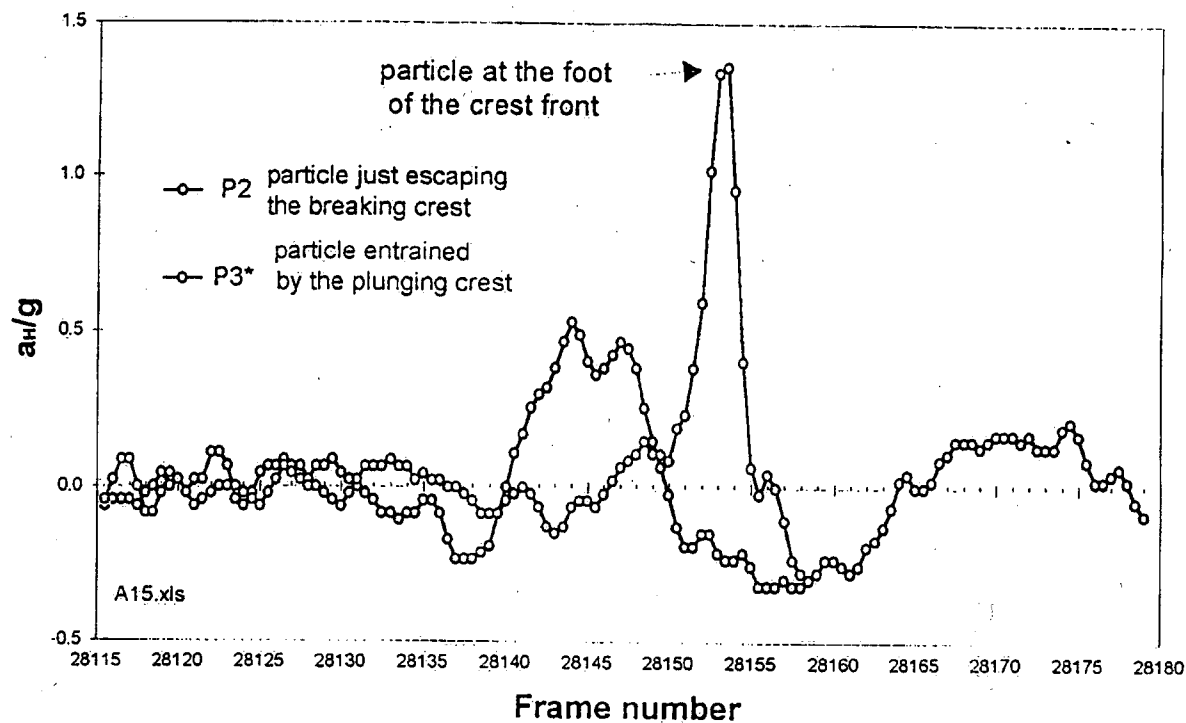


Fig. 5. Horizontal acceleration of floating particles. Experiment A15.

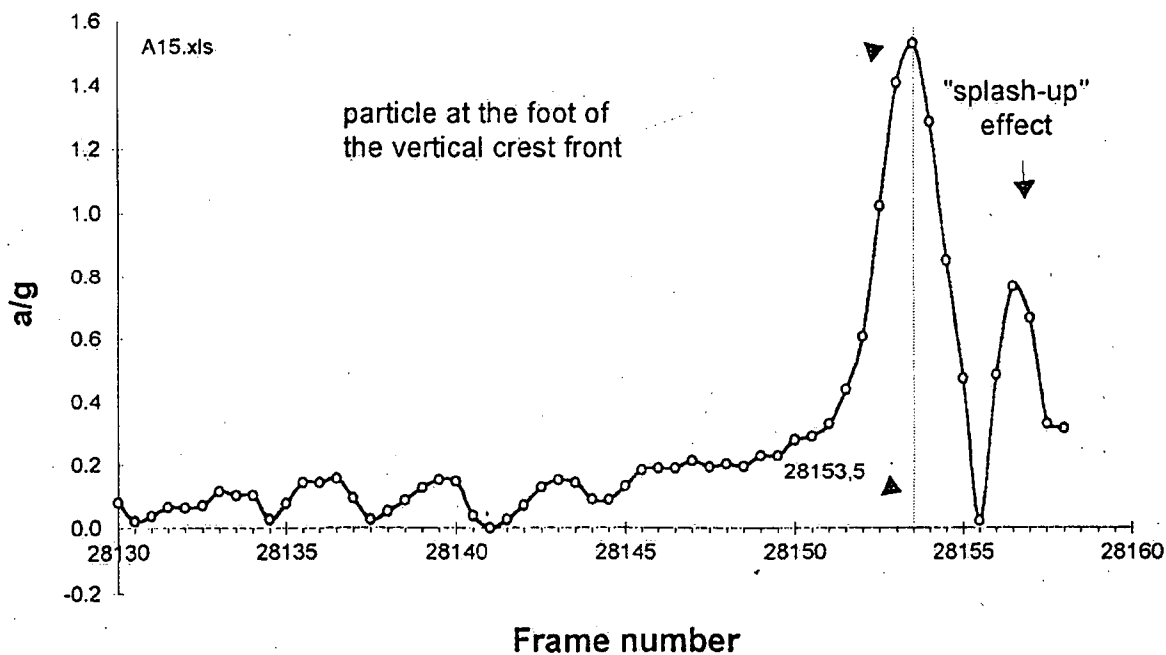


Fig. 6. Total acceleration of floating particle. Experiment A15.

4. Kinematic Models.

In the offshore industry a stretching theory developed by (Wheeler 1970) has traditionally been used for prediction of kinematics of irregular sea states. In this study, we use a modified stretching model (Lo and Dean 1986) as representative of this class of model. (Donelan et al. 1992) report that it produces velocities very similar to the Wheeler method). We also used the superposition method proposed by (Donelan et al. 1992), based on the linear superposition of a sum of freely propagating wave trains. Even when adapted to account for a possible mean flow, these linear models do not adequately represent the velocity beneath the coalescing wave group.

In the present study we therefore developed a third order simulation of the kinematics in steep wave crests, see (Skafel, Drennan and Kjeldsen 1997). This third order simulation technique is based on a combination of two earlier models. The first of these was developed by (Kishida and Sobey 1988) and simulates a Stokes third order wave train on a current with a linear profile.

This model is then used both for cases where non-linear waves propagate on opposing currents, and for cases without currents. However this model does not give a complete description of the wave spectrum developed by the command signal in the wave flume. Therefore the superposition model developed by (Donelan et al. 1992) is also used. The procedure for computation then becomes:

- 1. A third order wave train interacting with a current with a constant vorticity is computed.
- 2. The third order wave train is subtracted from the experimentally obtained surface elevation.
- 3. The kinematics of the remaining wave signal is analysed using the superposition model of (Donelan et al. 1992).
- 4. Finally the solutions obtained in steps 1) and 3) above are added, using the surface of the non-linear wave as mean water level for the additional wave components, in agreement with the concept behind the development of (Donelan et al. 1992).

5. Model Comparison.

Fig 7 shows an example from CCIW experiments of internal maximum horizontal velocities measured below extreme wave crests. The mean predicted velocity profiles beneath the crests using the modified stretching model, the superposition model, and the present third order model are shown in Fig. 8 along with the experimental laboratory profiles. All the kinematic models were run for the surface elevation time series of all the laboratory runs (26 experiments with the same condition). The resulting mean profiles, along with twice the standard deviations about the means are plotted. The narrowness of the spread of the standard deviations presented in Fig. 8 serves as an indication of the excellent reproducibility of the wave trains. Fourier analysis of each surface profile was used to find the peak frequency, and hence the peak wave number k_0 . The mean peak wave number for all 26 runs, in this case $k_0=1.38 \text{ m}^{-1}$ was used for normalisation. It can be seen here that the modified stretching model underpredicts the velocity significantly throughout the profile. The superposition model more nearly represents the data. The new third order model developed here best reproduces the data. It slightly underestimates the velocity, lying just outside the two standard deviation range. A further development of the new model is in progress. (Kjeldsen, Skafel, Drennan 1998).

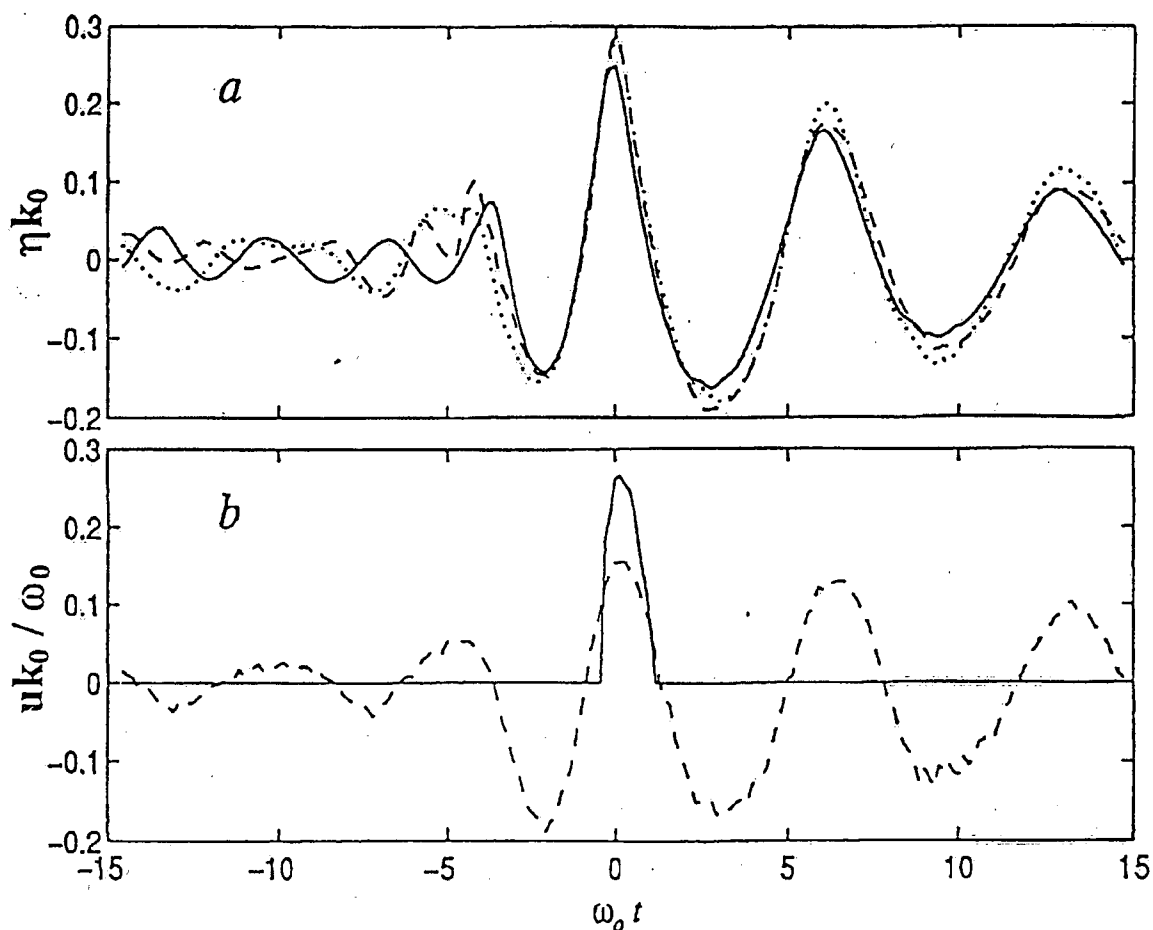


Fig. 7. Panel a shows the time series of the water surface elevation, just upwave of breaking, normalized by the peak wave number ($k_0 = 1.38$), and frequency ω_0 .

U_M is the mean current velocity of opposing current.

— : $U_M = 0$ cm/sec. - - - : $U_M = 4$ cm/sec. ···· : $U_M = 9.5$ cm/sec.

Panel b shows the corresponding normalized horizontal orbital velocity u for $U_M = 9.5$ cm/sec.

— : 4 cm above the still water level. - - : 20 cm below the still water level.

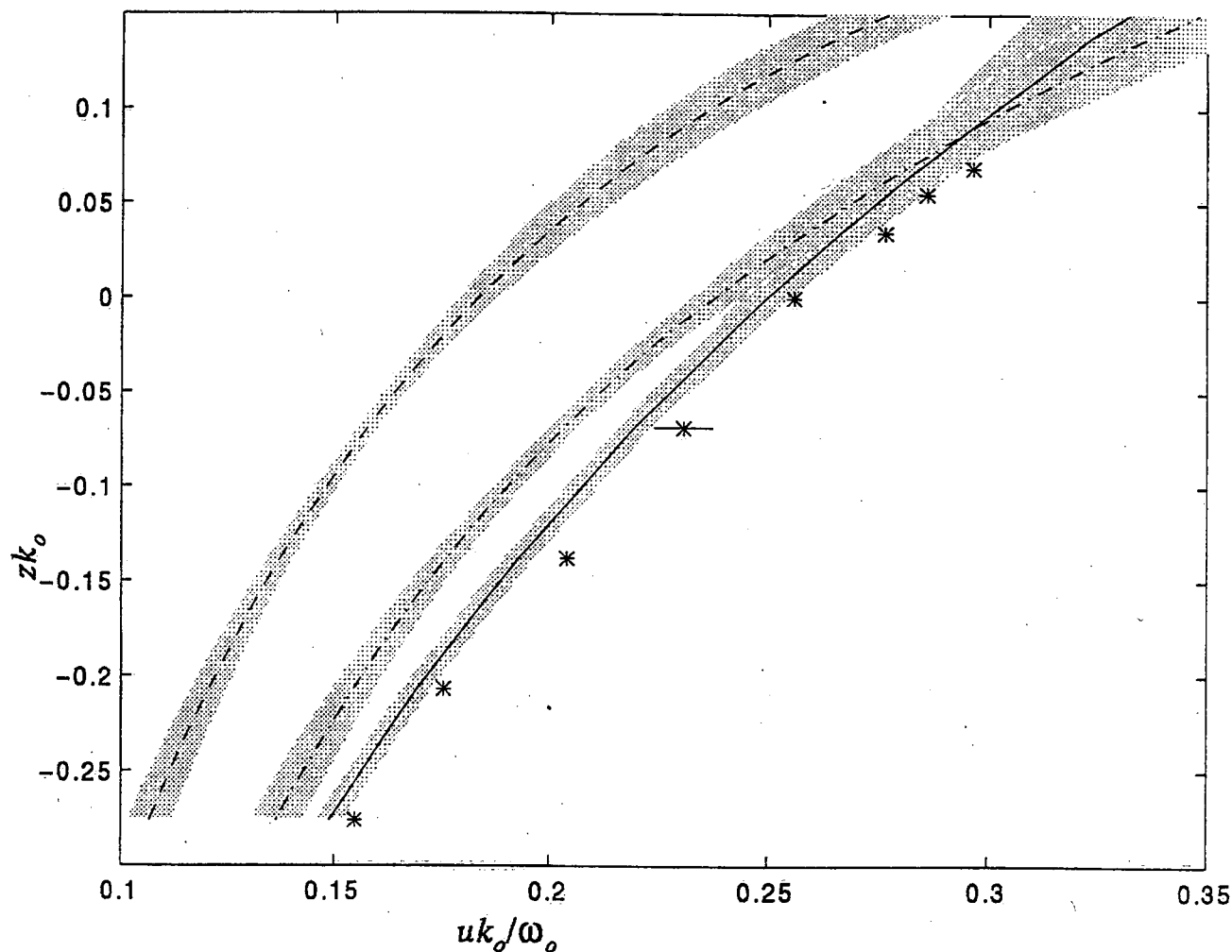


Fig. 8. Maximum horizontal orbital velocities (u) beneath the crest just upwave of breaking, normalized by k_0 and ω_0 , versus elevation (z) normalized by k_0 .

* : measured values. — — — : mean of linear superposition model.
 — * — : mean of modified stretching model. — : present model.
 The horizontal bar on the data point at the elevation of 0.05 represents two standard deviations about the mean. The shaded areas around the model lines enclose twice the standard deviations.

6. Conclusions.

1. A new third order kinematic model simulating the velocity beneath extreme waves has been developed; it represents the velocity beneath extreme waves occurring in irregular seas with or without current better than the modified Wheeler stretching model and the linear superposition model.
2. The new third order kinematic model can easily be adopted to take into account the directional spreading in a non-linear directional sea state interacting with a current.
3. A Lagrangian measurement technique is needed in order to measure particle accelerations in non-linear waves. By means of a visualisation technique it was possible to measure both the Lagrangian particle accelerations in breaking wave crests, and Stokes drift in steep waves as well as particle drift caused by breaking wave crests.
4. Both horizontal and vertical accelerations were measured not so far from the ones predicted by the numerical model developed by (Vinje & Brevig 1980.) Total particle accelerations up to 1.55 g were measured in plunging breakers occurring in deep water.
5. The behaviour of the tracer particles is similar to the one of free floating oceanographic buoys (operated at sea without moorings as in parts of the LEWEX experiment, see (Beal 1989)). If buoys are moored it is well known that they follow a more linear mode. Moored buoys will therefore not measure particle accelerations in non-linear breaking waves correctly.
6. The behaviour of the tracer particles is also similar to the one of rescue floats deployed after a ship accident in a swell. Drift of rescue floats at sea is also depending on wind, and drag coefficients related to float design. Accurate modelling of surface drift of smaller objects is very important for management of search and rescue operations at sea.
7. The wave generation technique of (Kjeldsen 1982), modified for opposing currents, was able to generate unusually large plunging breakers with crest front steepnesses in the range 0.25 - 0.41, similar to observations on the Norwegian Continental Shelf.

7. Further Work.

1. Results are also obtained for spilling and plunging breakers on beaches. These will be dealt with in a separate report.
2. A further development of experimental technique using smaller particles and a high speed camera is considered.
3. A further development of the new kinematic model incorporating an overturning jet on the steep irregular wave is considered, in order to simulate capsizing of smaller objects in a numerical ocean basin.

8. Acknowledgement.

This work was supported in part by NATO, Scientific Affairs Division within the research programme on «Giant Waves caused by wave-wave and wave-current interactions.» under contract no. 930137. Canada, France and Norway participated in this international research programme.

9. References.

- Beal R.C. (editor) (1989) « Measuring, Modelling, Predicting and Applying Directional Ocean Wave Spectra. - A record of the Labrador Sea Extreme Waves Experiment.» The Johns Hopkins University Press, Baltimore and London.
- Bonmarin P. (1989).»Geometric properties of deep-water breaking waves». J Fluid Mech. Vol 209, pp 405-433.
- Donelan M.A., Anctil F., and Doering J.C. (1992).»A simple method for calculating the velocity field beneath irregular waves.» Coastal Engineering. Vol 16. pp 399-424.
- I.A.H.R./P.I.A.N.C. (1986).»List of Sea State Parameters.» Supplement to bulletin No. 52.
- Kishida N. and Sobey R.J.(1988).»Stokes theory for waves on linear shear current»J.Engineering Mech. Vol 114. pp 1317-1334.
- Kjeldsen S.P., Myrhaug D. (1978) « Kinematics and Dynamics of Breaking Waves.» Report STF60 A78100 Norwegian Hydrodynamic Laboratories. Trondheim. Norway.
- Kjeldsen S.P. (1982).»2- and 3-dimensional deterministic freak waves.» Proc. 18th Internat. Conf. on Coastal Engineering. ASCE, Cape Town, pp 677-694..
- Kjeldsen S.P.(1997).»Examples of Heavy Weather Damages caused by Giant Waves.» SNAJ Bulletin of The Society of Naval Architects of Japan. Vol 828 1997/10 pp 744-748.
- Kjeldsen S.P., Skafel M.G.,Drennan W.M. (1998) « Modelling of Velocities in Giant Waves.» (in press.)
- Kjeldsen S.P., Bonmarin P. & Duchemin L. (1998).»Lagrangian measurements of accelerations in the crests of breaking and broken waves.» Applied Ocean Research 1998. (in press)
- Lo J.M. and Dean R.G.(1986).»Evaluation of modified stretched linear wave theory.» Proc. 20th Intern. Conf. on Coastal Eng. ASCE, Taipei, pp 522-536.
- Longuet-Higgins M.S.(1986).»Eulerian and Lagrangian wave measurements.» J. Fluid Mech. Vol. 173, pp 683-707.
- Skafel M.G., Drennan W.M. & Kjeldsen S.P. (1997).» Modelling of Velocities in Unusually Large Waves.» Canadian Coastal Science and Engineering Association. Proc. of the 1997 Canadian Coastal Conference. 21-24 may 1997. Guelph, Ontario. Canada..
- Vinje T., Brevig P. (1980) « Breaking Waves on Finite Water Depths. A numerical study.» Report The Norwegian Institute of Technology and Norwegian Hydrodynamic Laboratories. Trondheim. Norway.
- Wheeler J.D. (1979).»Method for calculating forces produced by irregular waves.» J. Petroleum Tech. March, pp. 359-367.

Also 98-239

A. MANUSCRIPT PREPARATION (by Branch/Division)Branch/Div. AERBProj./Sect. LR

Br./Div. Manuscript No. _____

Date Submitted 27/12/97Author P Bonmarin

Draft: 1st Date _____

Co-Authors SP Kjeldsen, MG Skafel, WM Brennan

2nd _____

TITLE Lagrangian measurements of accelerations in the crest of breaking and broken waves - Abstract

3rd _____

Typed by author _____

To be Published by: NMRI _____ Journal _____ Conference ☒ Other _____ External Publication _____Intern'l Conference on Coastal Engng, CopenhagenB. REVIEW/APPROVAL (by Branch/Division)

Peer Reviewed by _____

Date _____

Approved by Supervisor M. N. ChoultonDate Dec 22/97

Preliminary Approval

by Branch Director/Division Chief _____

Date _____

Comments and required changes _____

Status: Unrestricted ☒ Restricted _____ Until (event/date) _____

Reasons _____

FINAL APPROVAL FOR RELEASE BY:

Branch Director/Division Chief [Signature]Date 25/12/97

NMRI CONTRIBUTION NO. _____ Date Assigned _____

C. EXTERNAL PUBLICATION (by Branch/Division)

1st Journal _____ Sent _____ Accepted _____

2nd Journal _____ Sent _____ Accepted _____

Page Charges _____ Reprints Ordered _____ Reprint Costs _____

D. TRANSLATION (by Branch/Division)

Submitted by _____ Sent _____ Received _____ Complete Text? _____

Translation Requisition No. _____ Number of Words Translated _____

E. REPRODUCTION (by Branch/Division)

Branch/Division Authorization by _____ Date _____

Number of Copies Required (see overleaf) English _____ French _____

Single Side _____ or Double Side _____ Carfax Bound _____ or Stapled _____

No. of pages of entire report _____ No. of Figs. _____ No. of Photographs (Black&White) _____ (Colour) _____

Requisition No. KW405- Estimated Cost _____

Date sent to Printer _____ Date Returned from Printer (Date Released) _____

(Distribution: see overleaf)

LAGRANGIAN MEASUREMENTS OF ACCELERATIONS IN THE CREST OF BREAKING AND BROKEN WAVES

P. BONMARIN *, S. P. KJELDSEN **, M.G. SKAFEL *** and W.M. DRENNAN ***

* I.R.P.H.E. Institute - Lab. I.O.A., 163 Av. de Luminy - Case 903, 13288 Marseille, France

** The Norwegian Maritime Academy, Laderhammervæn 6, 7041 Trondheim, Norway

*** National Water Research Institute, P.O. Box 5060, Burlington, ON, L7R 4A6, Canada

1. INTRODUCTION

Breaking waves play an essential role in air-sea interactions, and in assessment of impact loads on both fixed and floating coastal structures, platforms and ships. Further breaking waves are very important for mixing and spreading of oil pollution in the upper surface layers of the sea.

The dynamic action of the crest of a plunging breaker thus becomes particularly important.

Even now when theoretical and numerical treatments of the breaking problem have progressed, controlled experimental measurements for guidance and testing are needed.

The present investigation reports synoptic measurements and analysis of particle accelerations and kinematics of plunging crests in deep water wave groups.

2. EXPERIMENTS

The experiments were performed in the large Air-Sea Interaction Simulation Facility of the I.O.A. laboratory of I.R.P.H.E. Institute, located in Marseille. The wave tank is 40 m long, 2.6 m wide and 1 m deep.

The breaking of waves in deep water conditions was obtained by using a «self focusing wave method» developed by Kjeldsen (1982).

A visualization technique developed by Bonmarin (1989) makes the wave profile visible and an associated image analysis process allows measurements of both the water surface geometry, crest front steepness and asymmetry (JAHRUPIANC 1986), as well as detailed measurements of accelerations of tracer particles dragged away by breaking and broken waves, (see Fig. 1).

Ten tests designated by the reference of A11 to A21 were performed.

3. RESULTS

Time series of video pictures showing both the deformation of the wave profile and the movement of the floating particles were taken at 50 frames per second and stored on a laser videodisc recorder.

The different steps of the measurements were i) the reconstruction of the trajectory of the floating particles (see Fig. 2), ii) the measurement of their celerity, and iii) the

measurement of their acceleration, these two last measurements being deduced from the trajectory.

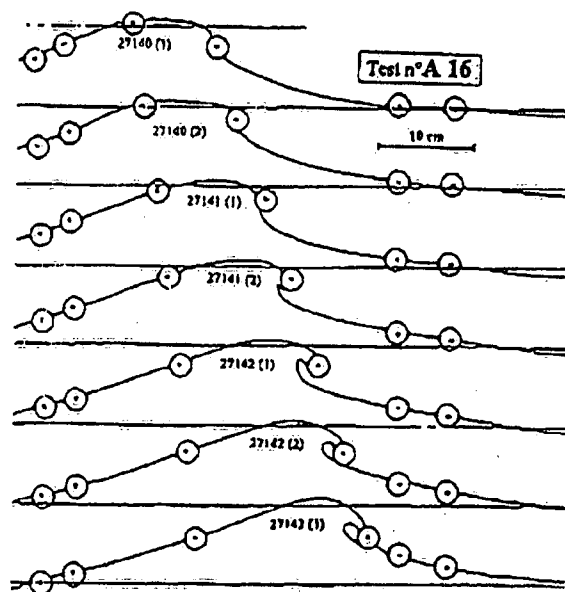


Figure 1. Time series showing a floating particle knocked by a plunging crest. Time interval between frames: 0.02 s.

The acceleration of the floating particles increases rapidly in the non breaking region and reaches a maximum value at the time when the overturning part of the crest collides with them (see Fig. 3).

Accelerations up to 1.5 g were measured at the free surface. Kinematics in the interior of the plunging breakers were also measured with an acoustic current doppler meter by Skafel, Drennan and Kjeldsen (1997).

The crests show an asymmetrical shape at the breaking onset, and work is in progress to establish if correlation exist between surface particle accelerations and wave asymmetry.

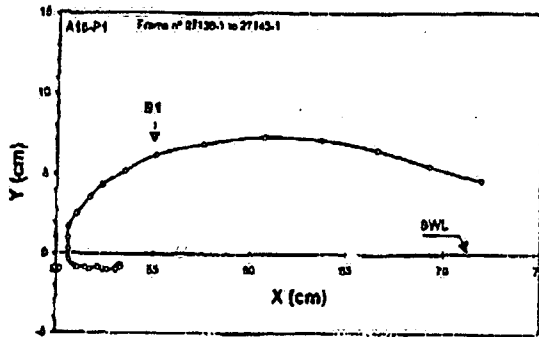


Figure 2. Trajectory of a floating particle knocked by a plunging crest. S1: collision with the crest. (result relevant to Fig. 1)

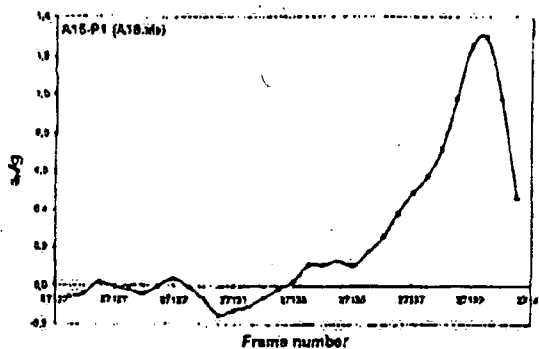


Figure 3. Horizontal acceleration of a floating particle knocked by a plunging crest (result relevant to Fig. 1).

Table 1 summarizes mean geometrical characteristics of the breaking waves observed during the ten tests, and measured at the breaking onset.

Table 1. Geometric characteristics of the waves at the breaking onset.

parameter	μ	ϵ	δ	λ
max.	0.88	0.54	0.35	2.63
min.	0.72	0.29	0.21	1.09
mean	0.81	0.41	0.26	1.62
sym.wave	0.50	0.28	0.28	1.00

In this Table, μ is the horizontal asymmetry factor, (ratio between the crest elevation and the wave height), ϵ and δ are respectively the front crest steepness and the rear crest steepness, and λ is the vertical asymmetry factor (asymmetry with respect to a vertical axis through the crest).

4. CONCLUSIONS

1. A Lagrangian measurement technique is needed in order to measure particle accelerations in non-linear waves. By means of a visualisation technique it was possible to measure the Lagrangian particle accelerations in breaking wave crests.

2. Both horizontal and vertical acceleration were measured: total particle accelerations up to 1.5 g were measured in plunging breakers occurring in deep water coalescing wave groups.

3. The wave-following properties of the tracer particles were mapped. A calibration experiment was performed with a symmetric regular wave with steepness $ak = 0.31$. A significant Stokes drift in agreement with this theory was obtained.

4. The behaviour of the tracer particles is similar to the behaviour of oceanographic buoys if these are operated at sea without moorings as in the LEWEX-experiment, see Beal (1989). If such buoys are moored it is well known that they follow a more linear mode. Such buoys can therefore not measure particle accelerations in non-linear waves correctly.

5. The behaviour of the tracer particles is also similar to the behaviour of rescue floats deployed after a ship accident. More research is needed in order to model wave-induced drift currents in steep irregular seas containing plunging wave crests.

Drift of rescue floats at sea is also controlled by drag-coefficient related to wind forces. Accurate modelling of surface drift of smaller objects is very important for management of search and rescue operations at sea.

ACKNOWLEDGEMENTS

This work was supported in part by NATO, Scientific Affairs Division, within the research programme on « Giant Waves » under contract n° 930137.

REFERENCES

- Bear R.C. (editor) 1989 Measuring, Modelling, Predicting and Applying Directional Ocean Wave Spectra. The Johns Hopkins University Press, Baltimore and London.
- Bonmarin P. 1989 Geometric properties of deep-water breaking waves. J. Fluid Mech. vol. 209, pp 405-433.
- I.A.I.R./P.I.A.N.C. 1986 List of Sea State Parameters. Supp. to bulletin n° 52, 1986.
- Kjeldsen S.P. 1982 2- and 3- dimensional deterministic freak waves, Proc. 18th. Inter. Conf. Coastal Eng. ASCE, Cape Town, pp 677-694.
- Kjeldsen S.P. 1997 Examples of Heavy Weather Damages caused by Giant Waves. Bull. of SNAJ, Soc. of Naval Architects in Japan, Oct. 1997.
- Kjeldsen S.P., Bonmarin P. & Duchemin J. 1997 Lagrangian measurements of kinematics and accelerations in the crest of breaking deep water waves. Applied Ocean Research (in press).
- Skafel M. G., Drennan W.M. & Kjeldsen S.P. 1997 On the kinematics of steep waves. In Proc. Canadian Coastal Conference, Guelph, Canada.

Environment Canada Library, Burlington



3 9055 1017 7219 1

PRINTED IN CANADA
IMPRIMÉ AU CANADA



ON RECYCLED PAPER
SUR DU PAPIER RECYCLÉ

National Water Research Institute
Environment Canada
Canada Centre for Inland Waters
P.O. Box 5050
867 Lakeshore Road
Burlington, Ontario
L7R 4A6 Canada



**NATIONAL WATER
RESEARCH INSTITUTE**
**INSTITUT NATIONAL DE
RECHERCHE SUR LES EAUX**

National Hydrology Research Centre
11 Innovation Boulevard
Saskatoon, Saskatchewan
S7N 3H5 Canada

Institut national de recherche sur les eaux
Environnement Canada
Centre canadien des eaux intérieures
Case postale 5050
867, chemin Lakeshore
Burlington, Ontario
L7R 4A6 Canada

Centre national de recherche en hydrologie
11, boul. Innovation
Saskatoon, Saskatchewan
S7N 3H5 Canada



Environment
Canada

Environnement
Canada

Canada