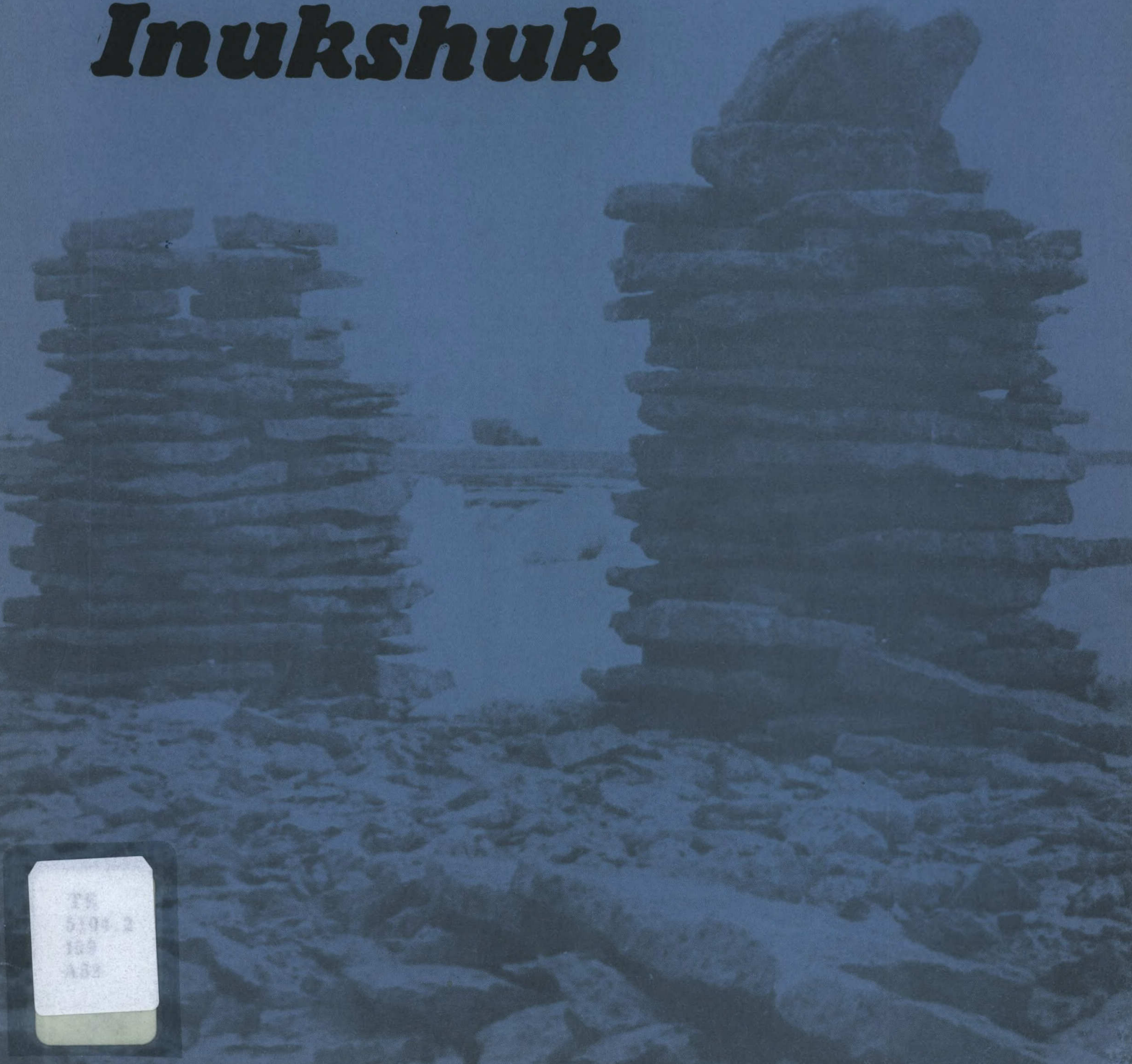


428

LKC
TK
5104.2
.159
A5
1979

Inukshuk



TK
5104.2
.159
A5

TK
51042
I59
A62

DD 10637710

DK 10640204

ANIK-B
PILOT PROJECT ✓

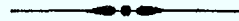
INUKSHUK

OF THE
INUIT TAPIRISAT OF CANADA

Michael Amarook, President

David Simailak, Project Director

Lyndsay Green, Operations Manager
(613) 238-8181

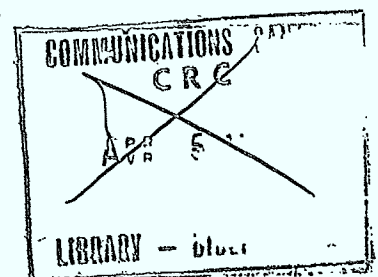


DEPT. OF COMMUNICATIONS

N. George Davies, D/ Scopo
(613) 596-9215

W. T. Kerr, Anik-B Project Manager
(613) 596-9596

John Brookfield, Project Co-ordinator
(613) 596-9570



ITC SITE VISITS

JUNE 1979

PURPOSE: To determine the feasibility of installing the TVRTs in the following six sites, to be operational by September 1980.

Baker Lake	Pond Inlet
Eskimo Point	Igloolik
Cambridge Bay	Frobisher Bay

Personnel on this Visit:

Len Petrie, Consultant
Petrie Telecommunications Ltd.
22 Barran St.,
OTTAWA, Ontario. K2J 1G4
(613) 825-1560

Tony Manernaluk
Inuit Tapirisat of Canada
RANKIN INLET, N.W.T. X0C 0G0
(819) 645-2940

K. C. Gustafson
Communication Research Centre
Station "H" P.O. Box 11490
Shirley's Bay,
OTTAWA, Ontario K2H 8S2
(613) 596-9988

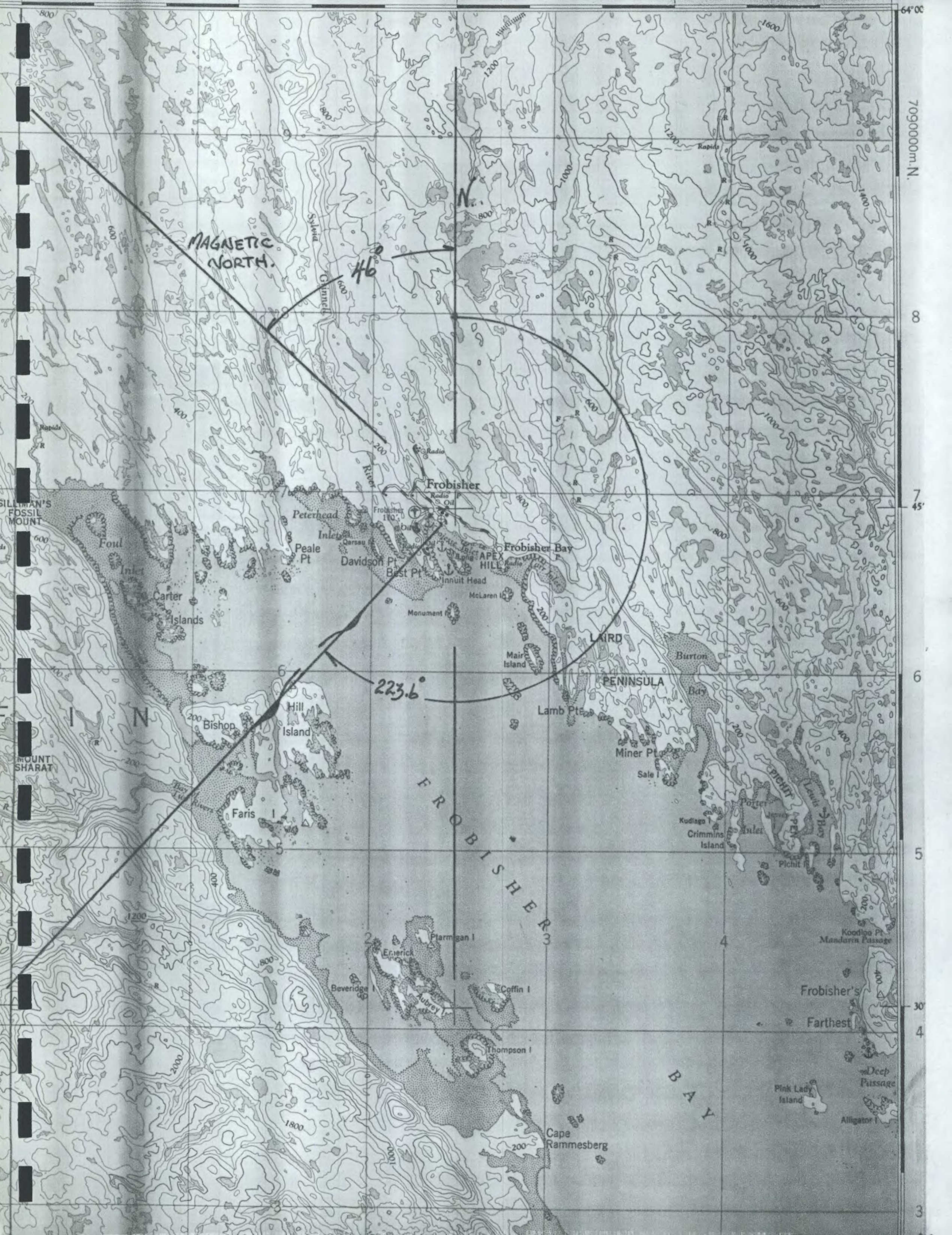
Charter Aircraft: Kingair from Calm Air Ltd., Lynn Lake, Manitoba

SCHEDULE

Leave Ottawa	7 June 79
Arrive Baker Lake (Picked up Charter)	8 June 79
Arrive Eskimo Point	9 June 79
Arrive Cambridge Bay	11 June 79
Arrive Pond Inlet	14 June 79
Arrive Igloolik	16 June 79
Arrive Frobisher Bay	19 June 79
Arrive Ottawa	20 June 79



Frobisher Bay



64° 00'

7090000m.N.

8

7

45'

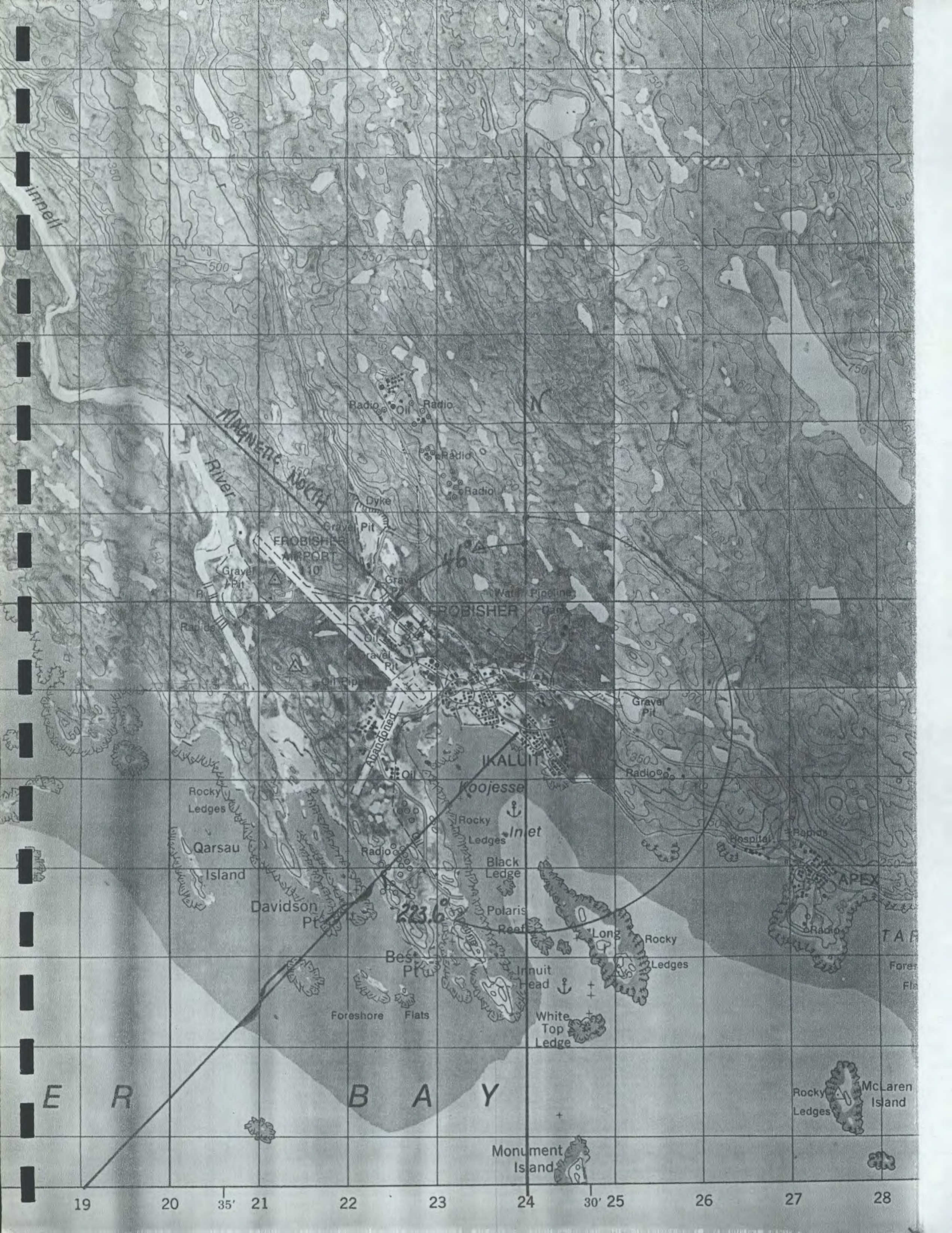
6

5

30'

4

3



E R B A Y

19 20 35' 21 22 23 24 30' 25 26 27 28



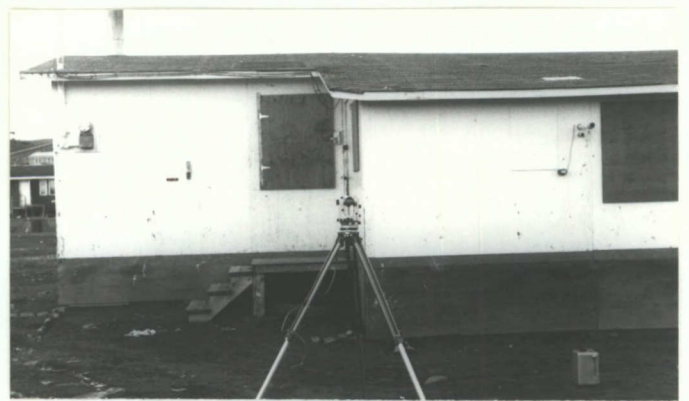
Nunatsiakmiut (Studio)



Theodolite looking at Anik-B from proposed pad beside the studio



Looking up at Anik-B from the studio



Looking up at Anik-B from the studio



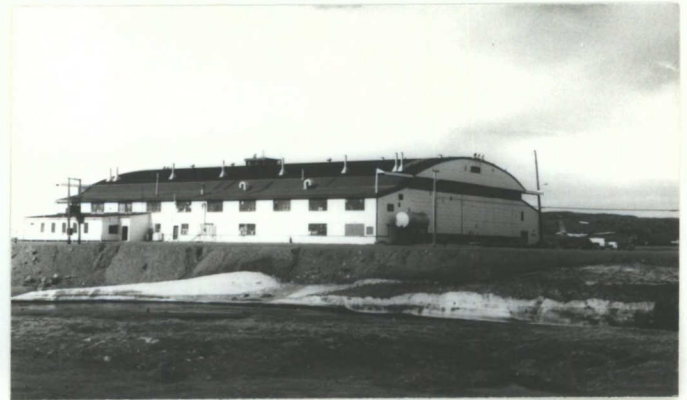
Adult Education



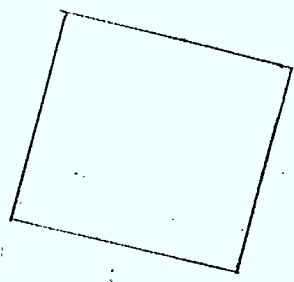
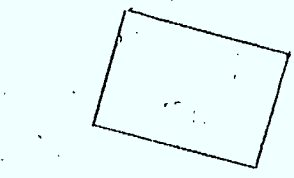
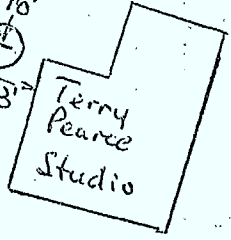
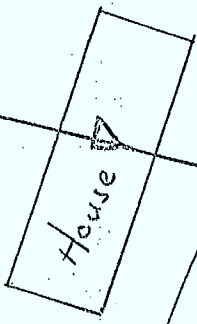
Adult Education with school in background



View of Anik-B from Adult Education Bldg.



Airport

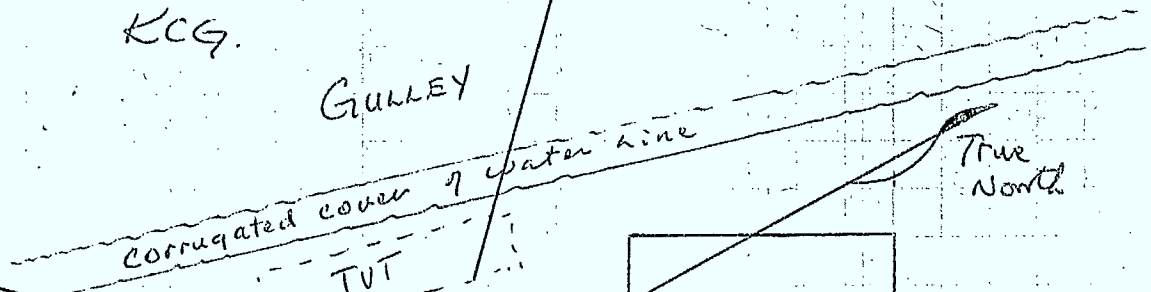


Mag North
46°
el 223.6
decl 46°
el 11.23°

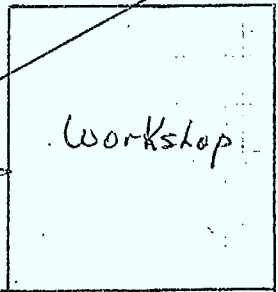
FROBISHER BAY NWT
20 JUNE 79
KCG.

GULLEY

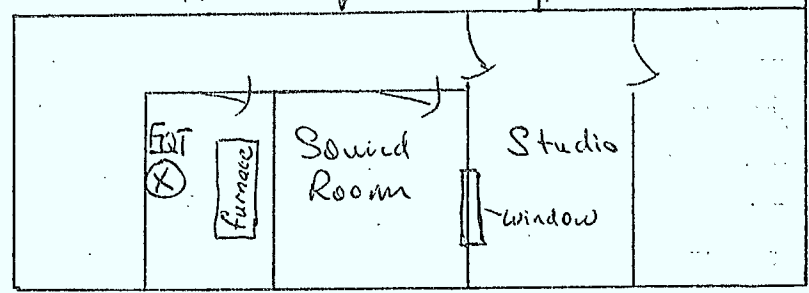
Road



elevation view $\leftarrow 1^\circ$



Adult Education School



FROBISHER BAY, N.W.T.

1. Andrew (Andy) Pelletier

Northern Affairs Lab

Work Phone: 979-6369

Andy picked up our equipment and
and offered to assist in any way.

Just call!

2. The Staff House

\$45.00/night \$6. \$10. \$12 for meals.

3. TV Production

Terry Pearce Phone: 979-6420 Area code 819.

979-6702

4. Nordair Phone: 979-5331.

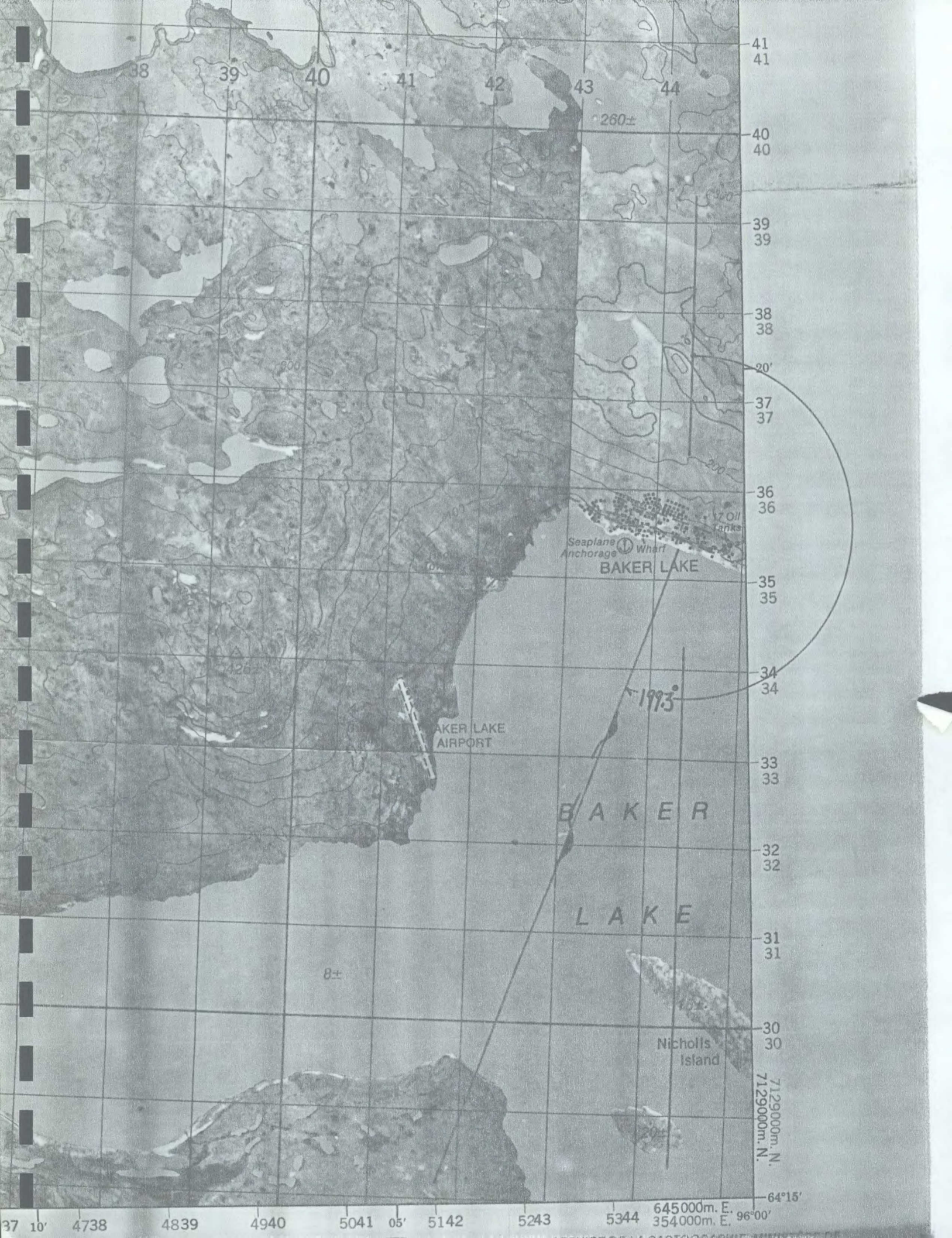
4. Good Taxi Service.

Good Hydro Service.

KCG 20 June 79.



Baker Lake



41
41
40
40
39
39
38
38
37
37
36
36
35
35
34
34
33
33
32
32
31
31
30
30
7129000m. N.
7129000m. N.

38 39 40 41 42 43 44

260±

600

400

200

426±

BAKER LAKE AIRPORT

Seaplane Anchorage Wharf

17 Oil Tanks

BAKER LAKE

1993

B A K E R

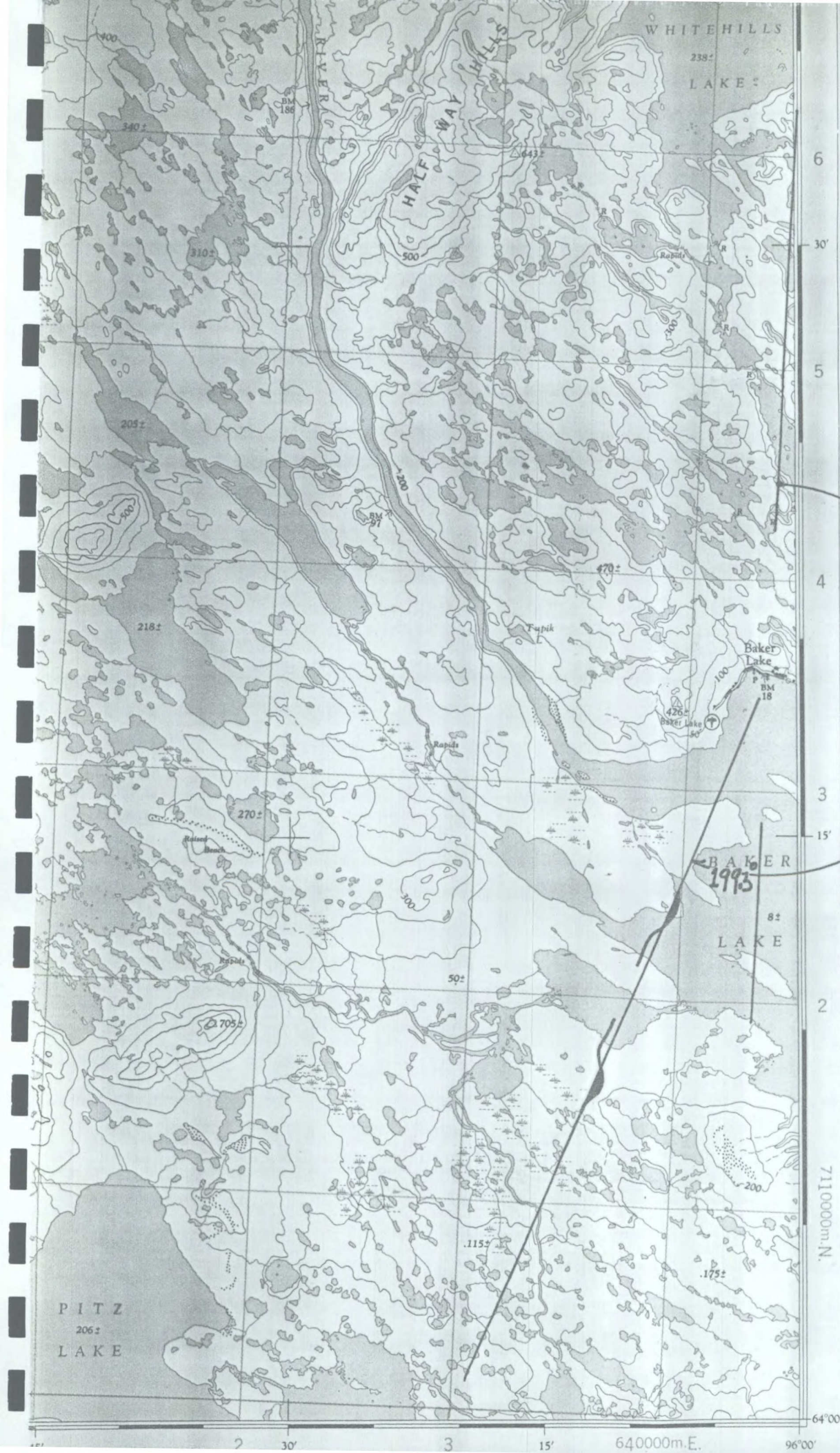
L A K E

8±

Nicholls Island

20±

37 10' 4738 4839 4940 5041 05' 5142 5243 5344 645000m. E. 354000m. E. 96°00'



6
30'
5
4
3
15'
2
711000m.N.
64°00'

GRID ZONE DESIGNATION 14W	100,000 M. SQUARE IDENTIFICATION				
	<table border="1"> <tr><td>6</td></tr> <tr><td>NH/PH</td></tr> <tr><td>NG/PG</td></tr> <tr><td>NG/PG</td></tr> <tr><td>NH/PH</td></tr> </table>	6	NH/PH	NG/PG	NG/PG
6					
NH/PH					
NG/PG					
NG/PG					
NH/PH					
TO GIVE A REFERENCE TO NEAREST 1000 METRE					
EXAMPLE: R.C.M.P. DETACHMENT					
SQUARE: Read letters of 100,000 m. square	PG				
EASTING: Read number on grid line immediately to left of point	4				
Estimate tenths of a square from this line eastward to point.	7				
NORTHING: Read number on grid line immediately below point	3				
Estimate tenths of a square from this line northward to point.	3				
MILITARY GRID REFERENCE (to nearest 1,000 metres)	PG443				
If reporting beyond 18" in any direction, prefix Grid Zone Designation as: 14WPG443					

TEN THOUSAND METRE
UNIVERSAL TRANSVERSE MERCATOR
ZONE 14

2 30' 3 15' 640000m.E. 96°00'



Production Centre
(under construction)



Production Centre
(under construction)



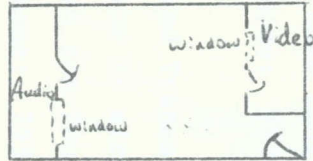
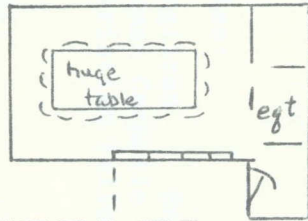
Inside Resource Building



Inside Resource Building

Road

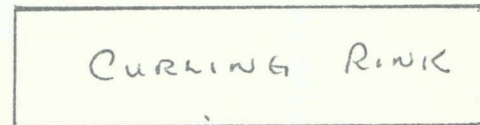
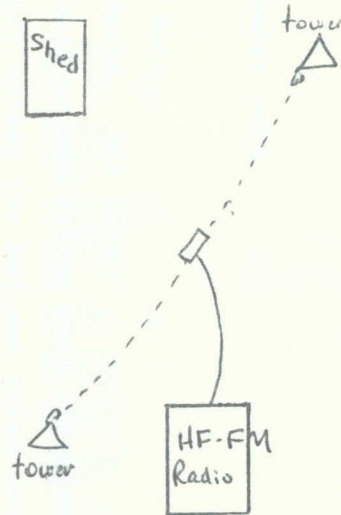
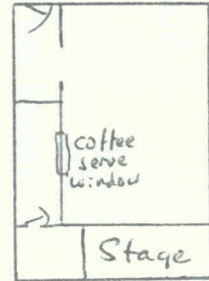
RESOURCE CENTRE



PRODUCTION CENTRE



COMMUNITY CENTRE.



School

Road

Declination Correction $\approx 5^\circ$

Azimuth $\frac{194^\circ}{199^\circ}$

horizon = elevation = 0°

Required elevation = 16.6°

- no problem.

199 $^\circ$

BAKER LAKE N.W.T.

FRIDAY 8 JUNE 79.

- K.C.G.

BAKER LAKE, N.W.T.

1. Hudson's Bay Store:

-has the normal hardware components, ie nails, screws etc

No lumber yard.

2. Iglu Hotel

Phone: 793-2763

Good accommodation with excellent meals.

\$75.00/day for bed and three meals. (Dinner \$12.00)

Baker Lake Lodge

Phone: 793-2965 Boris Kotelewetz.

3. Taxi and Transair

Good to airport for personnel and small express etc.

3/4 ton four-wheel drive

Phone: 793-2914

4. Authority:

R.C.M.P. stationed here.

5. Churches:

Anglican Rev Brian Ford

Roman Catholic ?

Christian Fellowship Rev Armand Tagoona.

5. Manager:

David Simailak Phone: Home: 793-2731

Off: 793-2874

6. Hydro Power: Plenty and excellent stability. (Diesel).



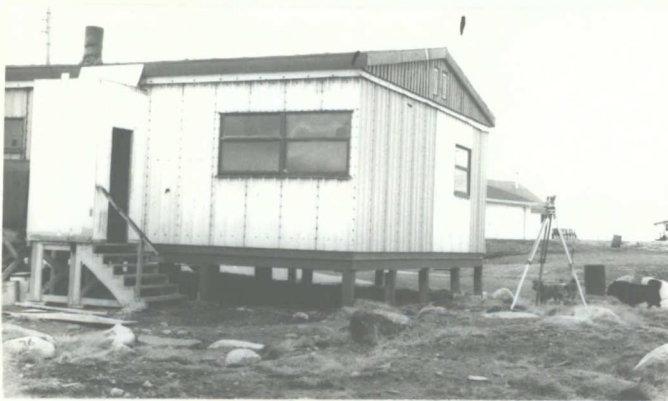
Eskimo Point



Community Centre



Community Centre (left)
Shooting Anik-B over school



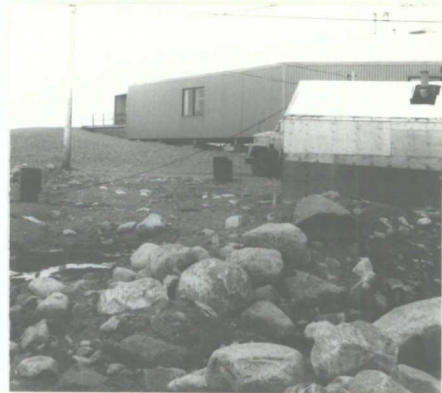
Bob Suluk's Office
Shooting Anik-B from potential pad



Looking from Bob Suluk's Office



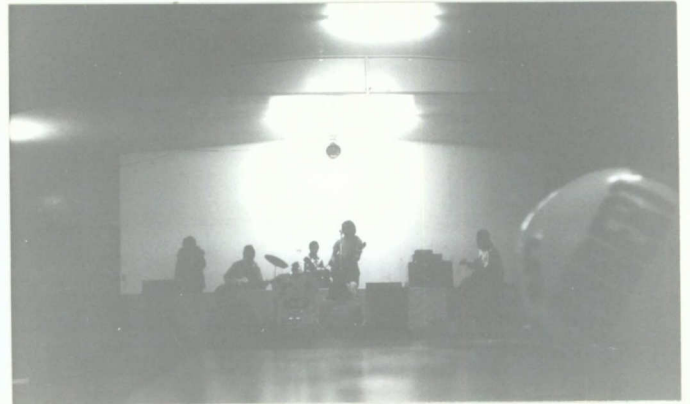
Hamlet Office on left Firehall on right



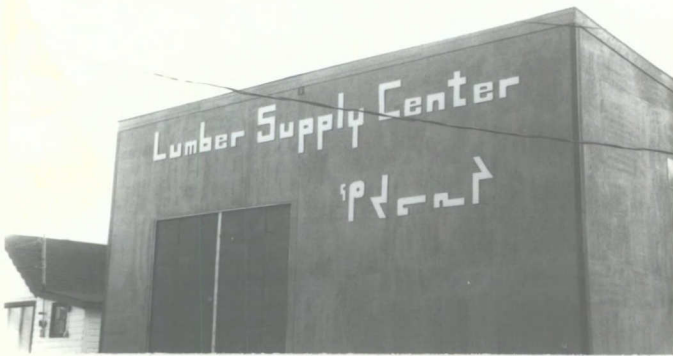
School in background
Local Radio Station in foreground
(Taken between Radio Stn & Hamlet Office)



Inuit Cultural Institute



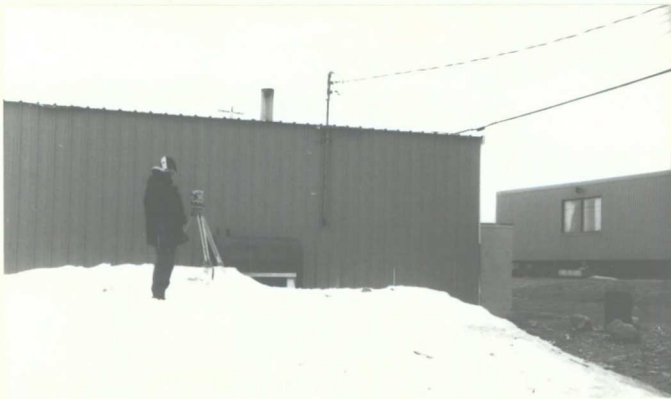
Jam Session in Community Hall



Lumber Supplies

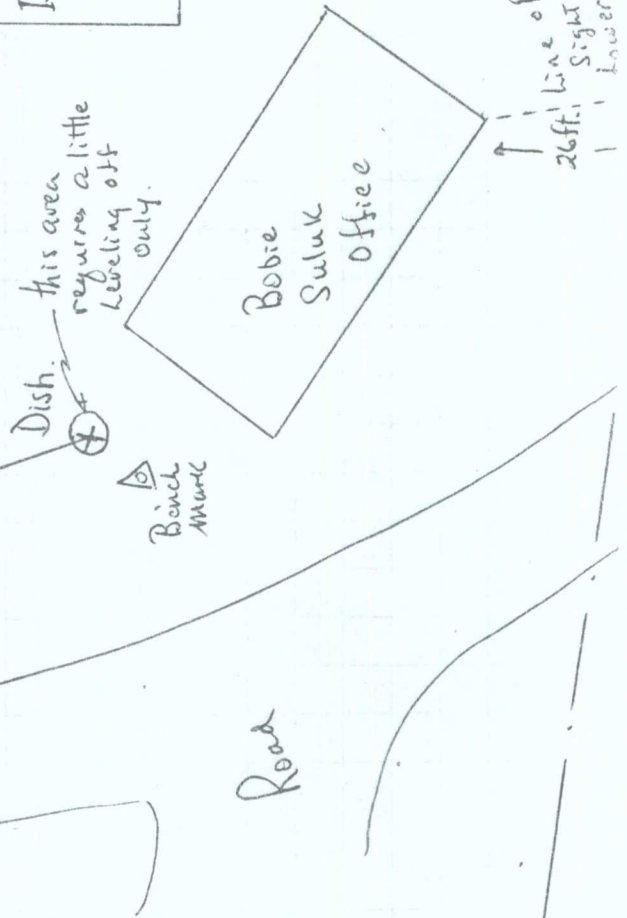
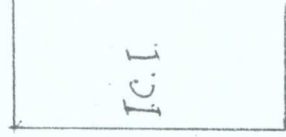
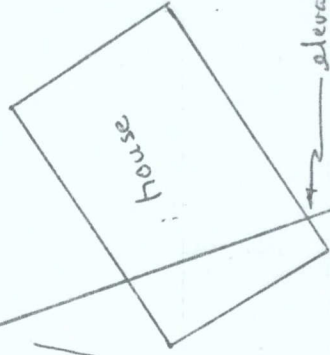
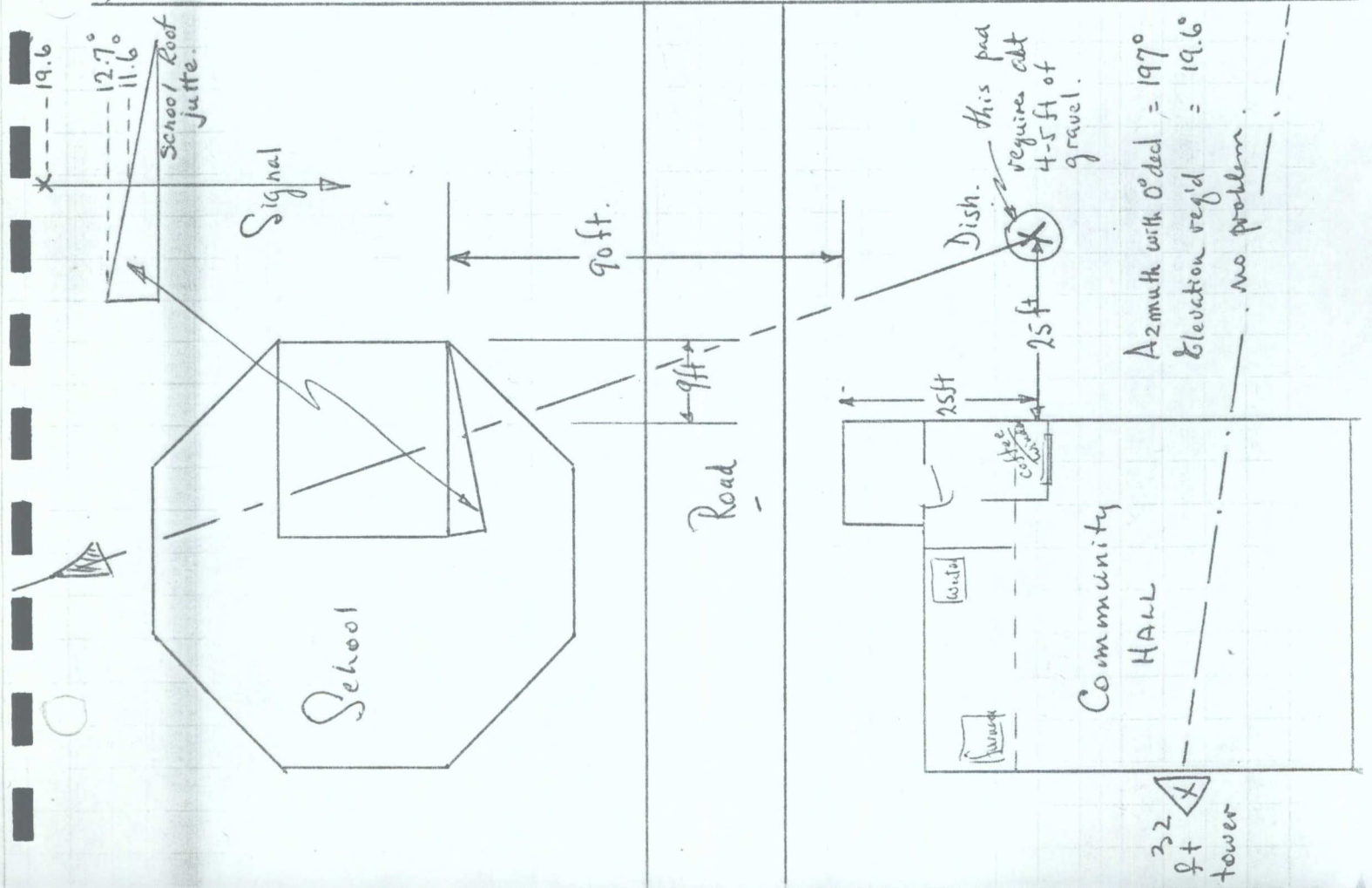


Hardware Supplies

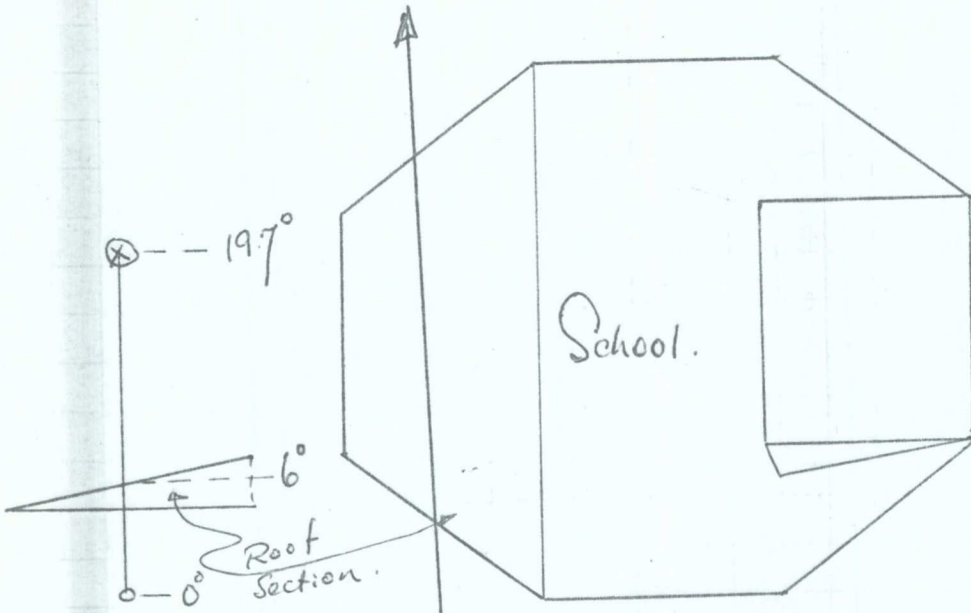


Possible Pad location beside
Community Centre

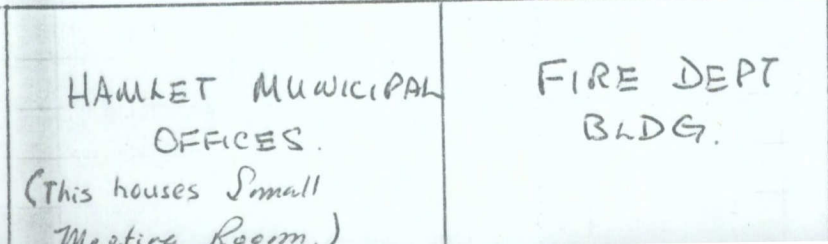
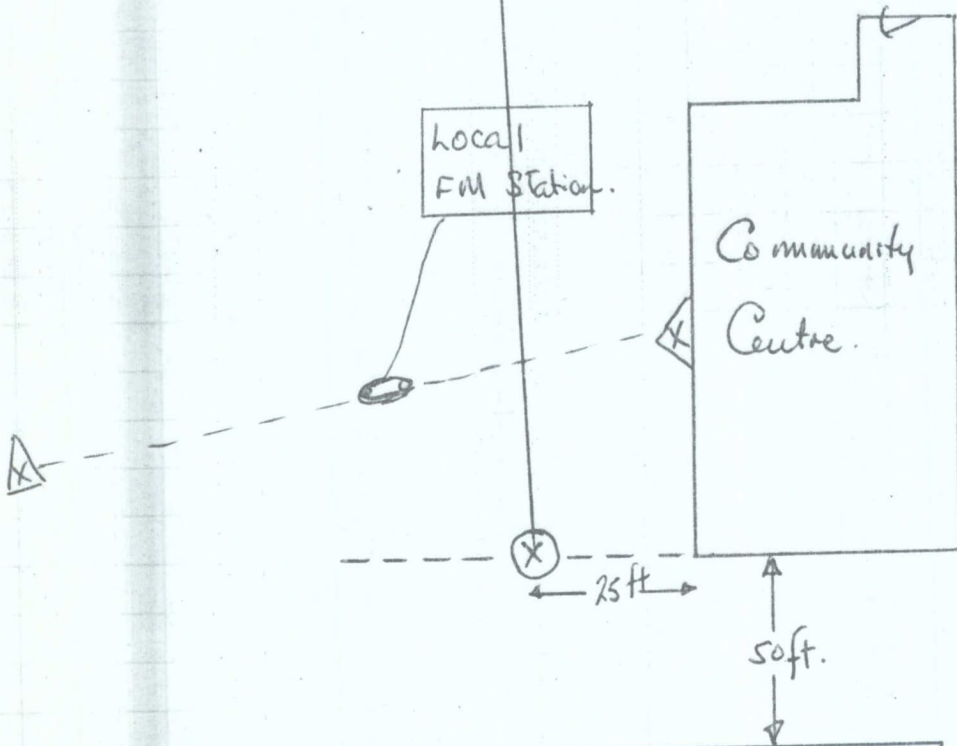
ESKIMO POINT.
 SUNDAY 10 June 79.
 KCG.



ESKIMO POINT.



Road.



ESKIMO POINT, N.W.T.

1. Supplies:

Hudson's Bay Store
Lumber Supply Centre

2. Accommodations:

Ootakevik Hotel
XOC OEO Phone: (819) 857-2849
Good accommodation - good meals
\$62.00/day for bed + 3 meals (\$4. - \$7. - \$7.)

3. Authority:

R.C.M.P. stationed here.

4. Taxi:

Good to airport for personnel and small gear.
Datsun Pick-up truck.

5. Settlement Manager:

Ralph King 857-2735

6. Head of Radio Committee:

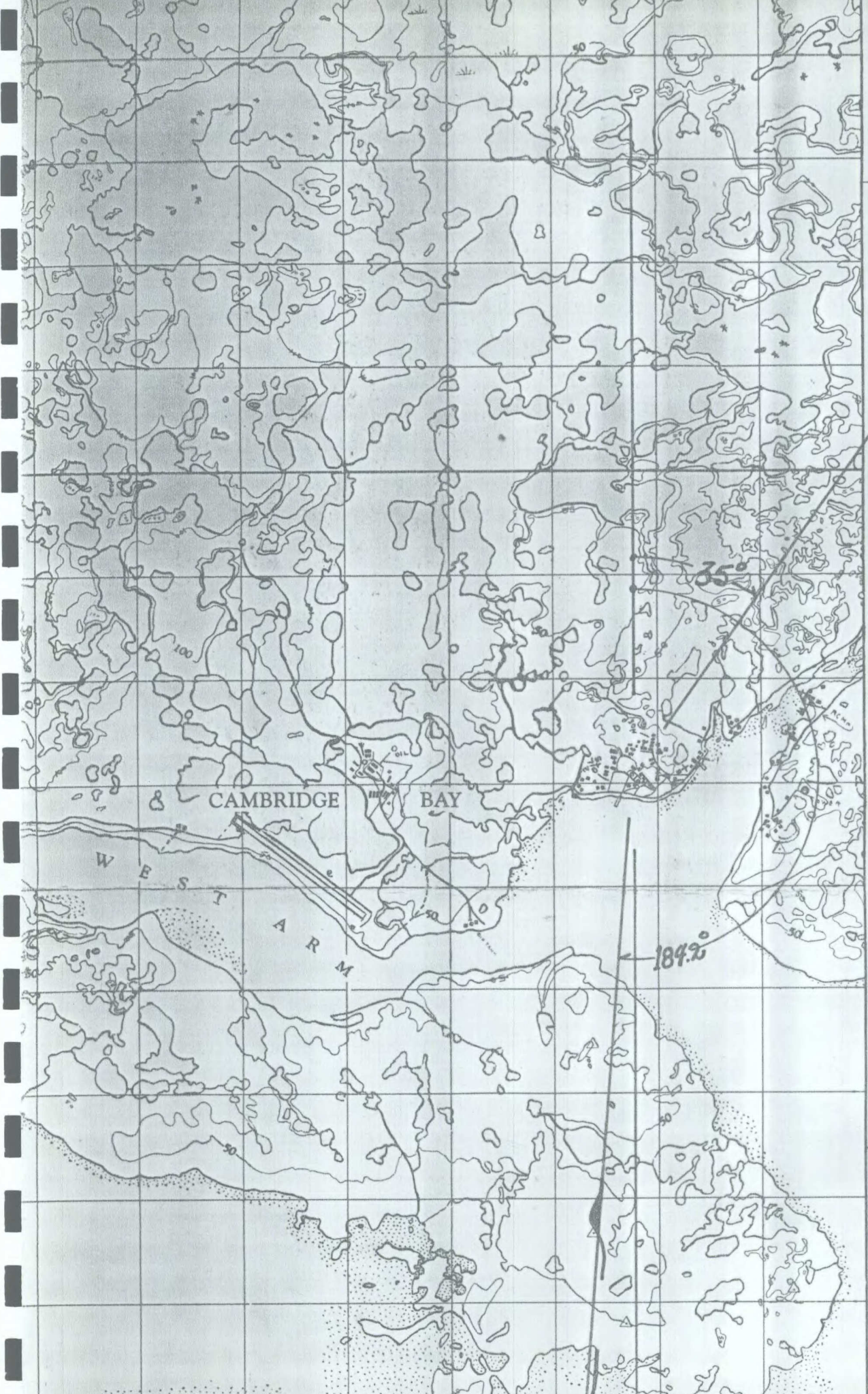
Luke Suluk 857-2862.

7. Hydro Power

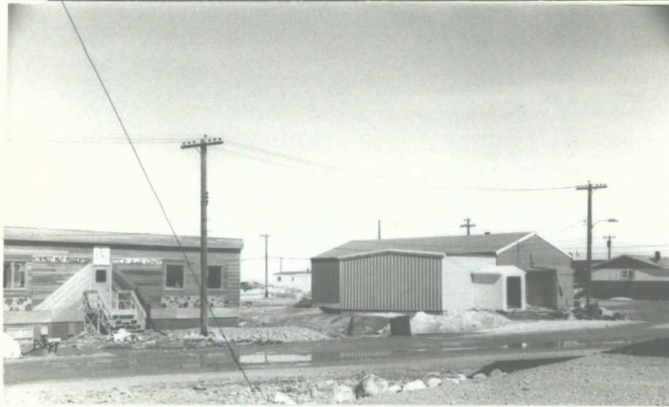
Plenty and excellent. (Diesel).



Cambridge Bay



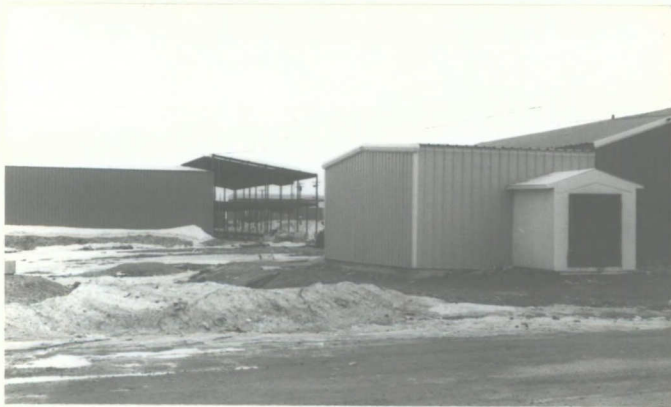
74
73
10'
72
71
70
69
68
67
66
65
64
05'
63
62
61



Cultural Institute on left
Community Hall on right



Cultural Institute on left
Community Hall on right



Arena - New Hamlet Offices -
Community Hall



Shooting Anik-B over Cultural Institute bldg.



David Tologonak's Office in the
Cultural Institute Building



Theodolite stands on proposed pad, as seen
through David's Office window

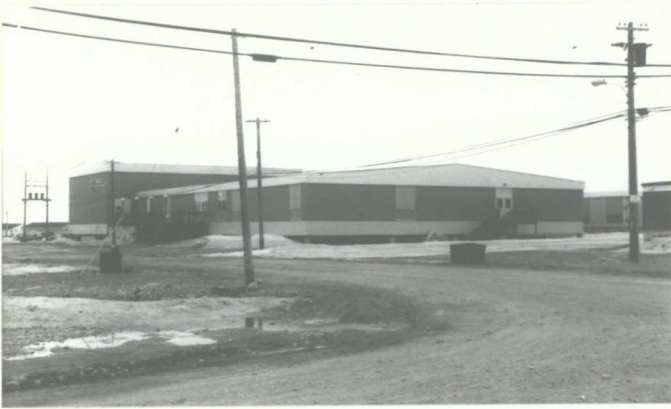
CAMBRIDGE BAY June 11 - 14, 1979



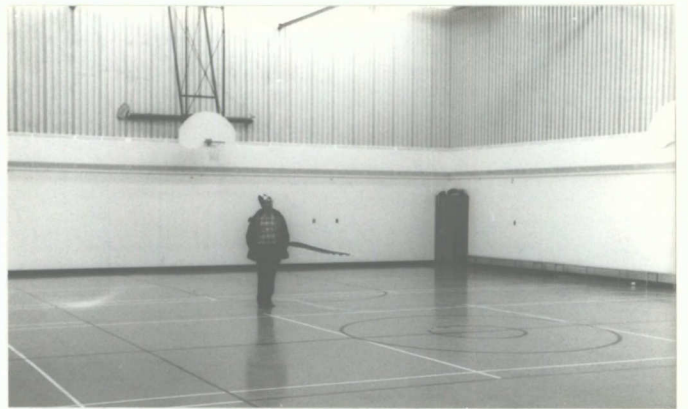
Inside Community Hall
(Large Meetings)



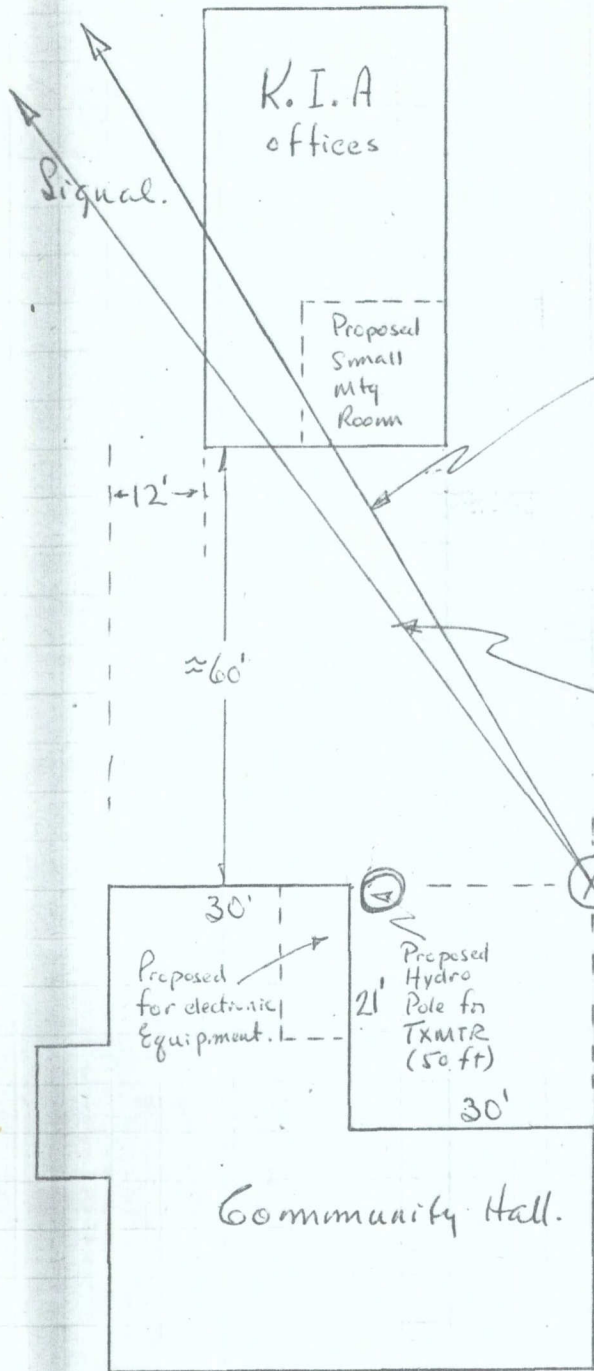
Community Hall - Drop In Centre
(Equipment Room)



Cambridge Bay School



School Gym



Determined with transit.
 using 35° declination ϵ .
 Azimuth 184°
 Elevation at roof 8.5°
 Elevation req'd 12.45°
 Transit 5 ft from ground.
 4' gravel pad to go in.

Determined through
 Shooting Sun. elevation at roof 8.9°
 70° Lat 185° long
 12 June 79 at 1216 hrs.

CAMBRIDGE BAY N.W.T.
 Tuesday 12 June 79
 K.C.G.

CAMBRIDGE BAY, N.W.T.

1. Hudson's Bay Store
Large - all the normal hardware etc.

2. Accommodations:
Ekaloktotiak Hotel (Cambridge Bay Hotel)
Phone: 983-2215 alt: 983-2201 & 983-2521
Telex: 034-4214
Cost: \$42.50/day (\$5. \$8. \$8.)
Includes taxi service.

3. Authority:
R.C.M.P. stationed here. Phone: 983-2111.


4. Contact Person:
David Tologanak.....(alt: James Panioyak)
c/o Box 18 Phone: 983-2458
Inukshuk Project 983-2445
Cambridge Bay, N.W.T. XOE OCO

5. Hydro Power:
Plenty & excellent. (Diesel).

6. Army Base:
Capt Art Binnie, Ops Officer
or
Major Anderson (after 17 July 80)
From Ottawa: (125) 761-2360.

KCG

Tuesday 12 June 79.



Igloolik





"The Inukshuks" in Igloolik



"The Inukshuks" in Igloolik



The Townsite looking at the Telesat Dish



Map reading on the walls of Igloolik Hotel



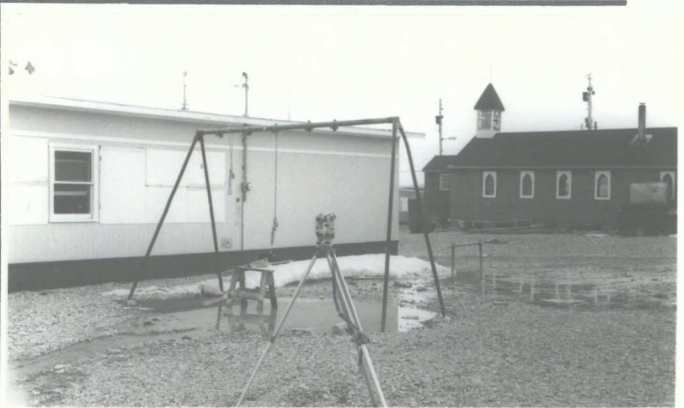
Proposed pad area by Community Hall



Looking up at Anik-B from Community Hall



Looking up at Anik-B from Community Hall
- but over 75 feet.



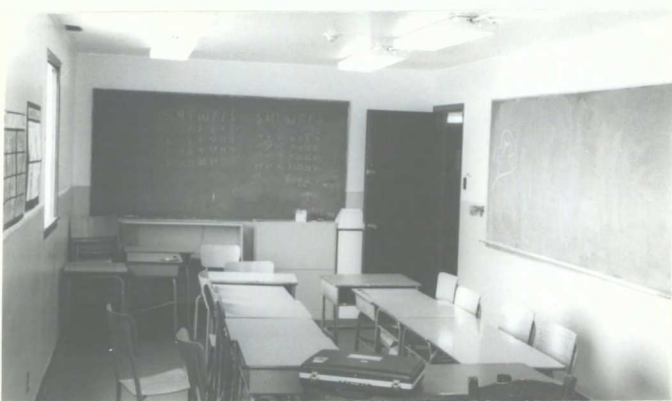
Looking up at Anik-B from Hamlet Office
over the Anglican Church



Inside Community Hall



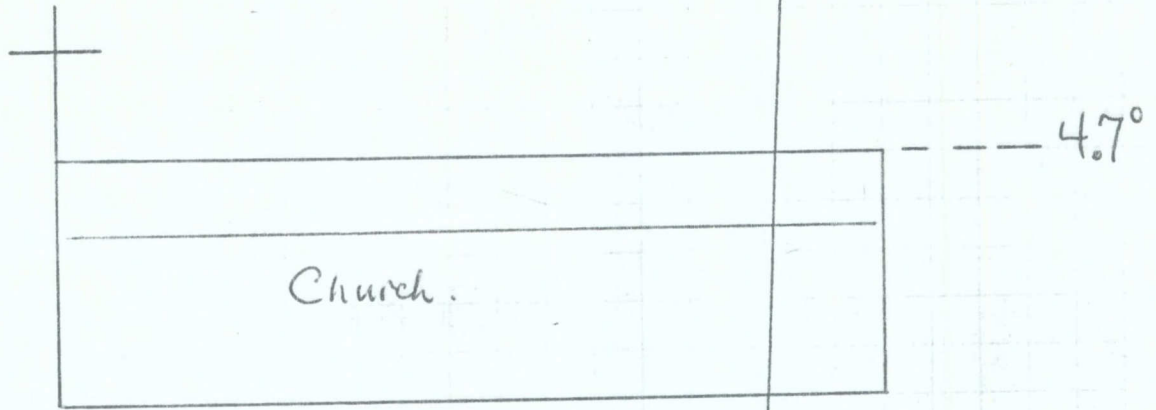
Inside Community Hall



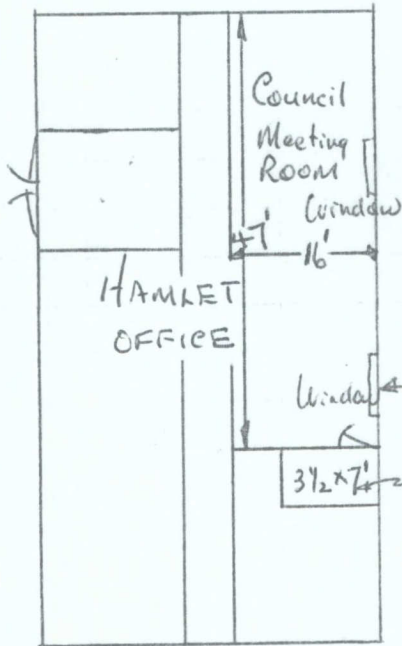
A classroom inside Adult Education Centre



A classroom inside Adult Education Centre

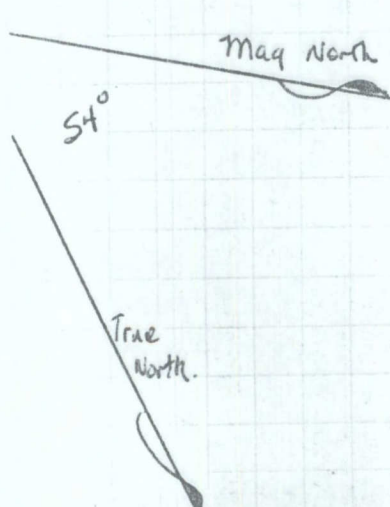


Road



≈ 30

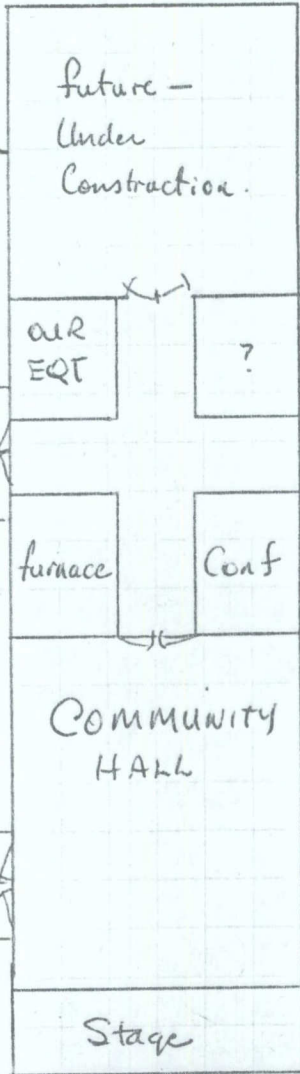
207.7



IGLOONIK
17 June 79
KCG



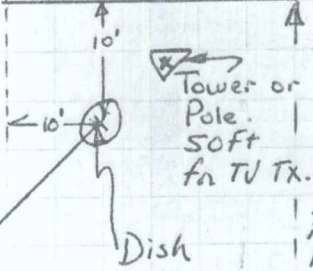
≈ 75'



≈ 30'

* Will require 150 ft of cable from Dish to Egt Room.

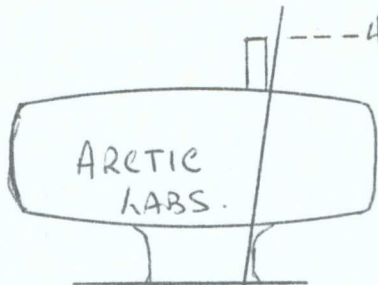
IGHOOLIK
17 June 79
KCG



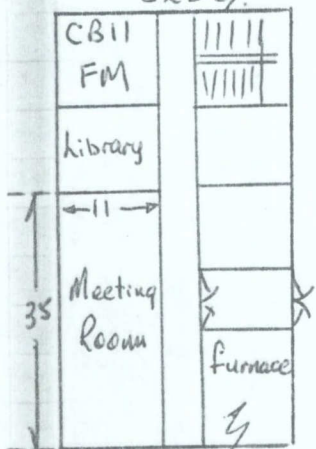
elevation req'd 9.92°
elevation: 45°
or $\frac{2}{3}$

262°
from Mag N.

elevation 2.1°



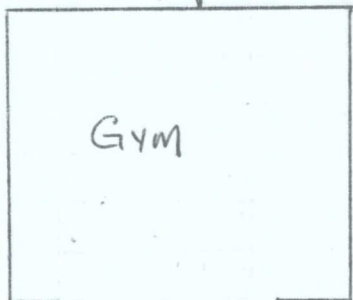
ADULT EDUCATION BLDG.



Also okay for sgt.

≈ 65 ft Hydro Poles

15'



Entrance



Road ≈ 50'



Mag North

not Satisfactory
reg'd elevation = 9.92
elevation = 7.4

Hydro Poles

IGHOOLIK
17 June 79
KCG

True North.

IGLOOLIK, N.W.T.

1. Hudson's Bay Store:

Normal things in hardware etc.

Co-op Store:

Some hardware components, but less than HBC.

2. Probable Organizations for Teleconferencing:

- a. The Education Committee
- b. The Alcohol Education Committee
- c. Hunter & Trapper's Association
- d. Lands Claim & Settlement
- e. Hamlet Council.

3. Churches:

Roman Catholic Church

Anglican Church.

4. Authority:

R.C.M.P. stationed here.

5. Community organizations:

President Radio Society: Methusalah Kumik

School Principal: Mr Jack Waye School Phone: 934-8878
Home Phone: 934-8942

Mayor: Josiah Enooya

Chairman Housing Ass'n: Thomas Kublu

President of Education Committee: Caleb Apak

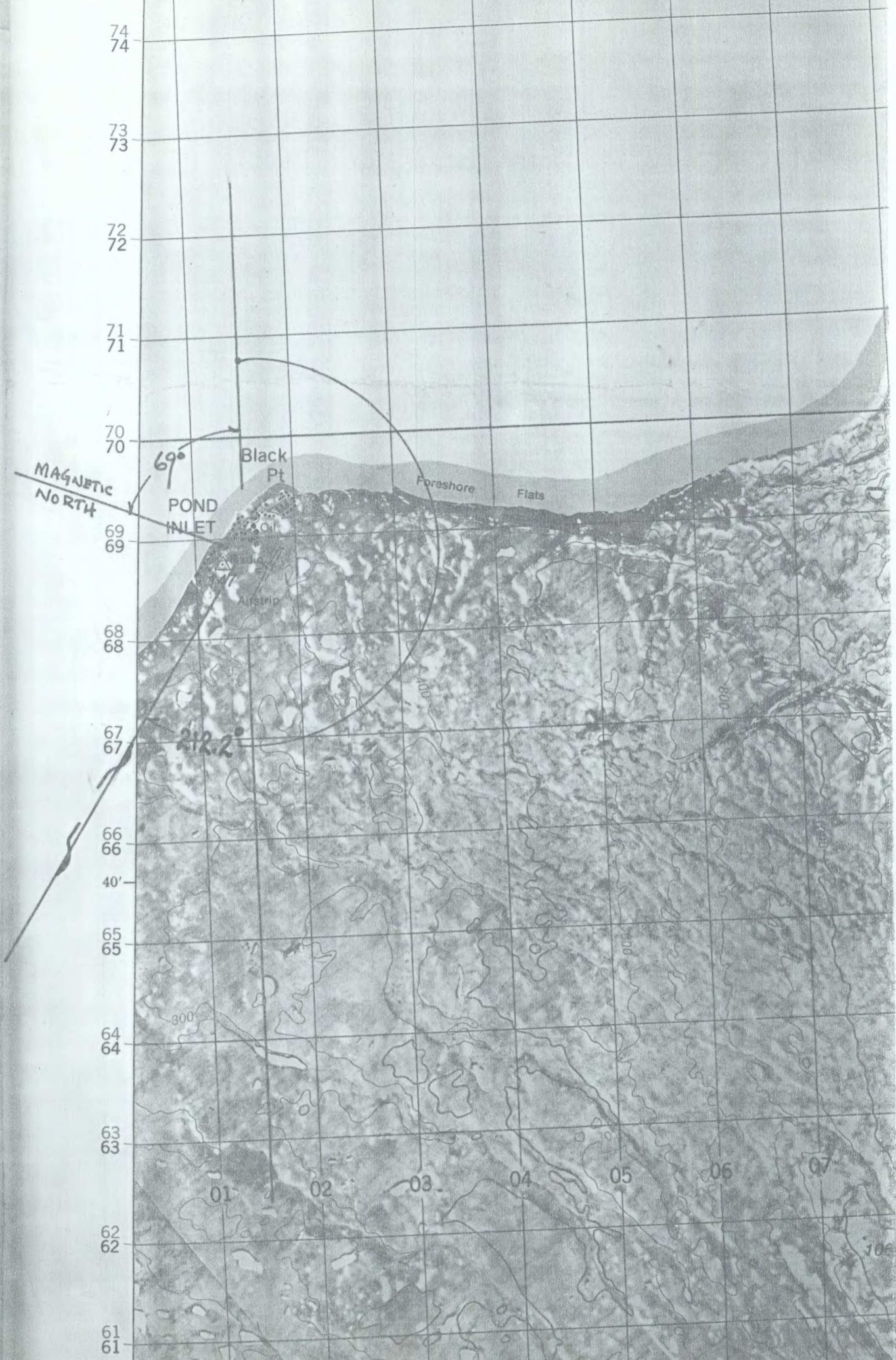
Adult Educator: Hugh Lloyd

Hamlet Office: Phone: 934-8830

6. Meetings: All meetings, large and small to be held in the Hamlet's Office.
Video Screen to be kept and used in Hamlet's Office.
Video cable to hook up with Adult Education Building.

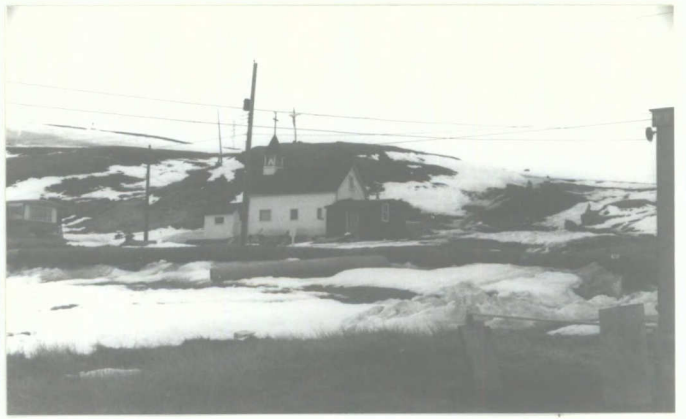


Pond Inlet





on coming into Pond



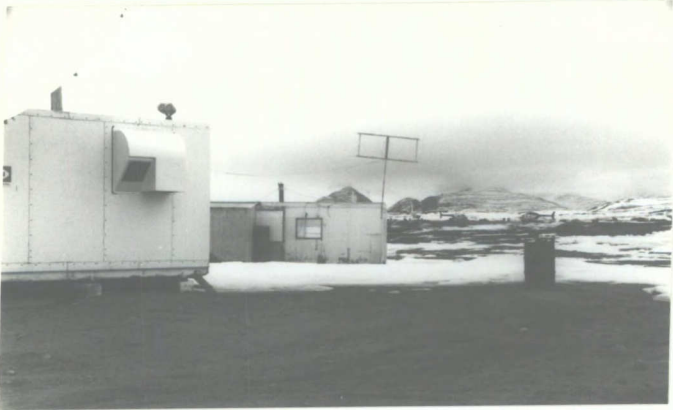
The Mountain south of the Townsite



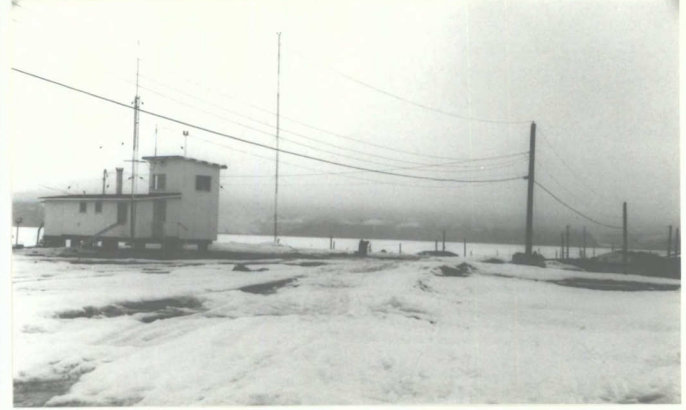
Shooting Anik-B from the school
(Anik-B on my back)



Meeting Room in the School



Centre Building is "PIC" Studios
(Left building is Telesat)



MET Office (just to right of Telesat)

POND INLET June 14 - 16, 1979



Community Hall (Note theotolite)



Inside Community Centre



Looking at Anik-B from Community Hall



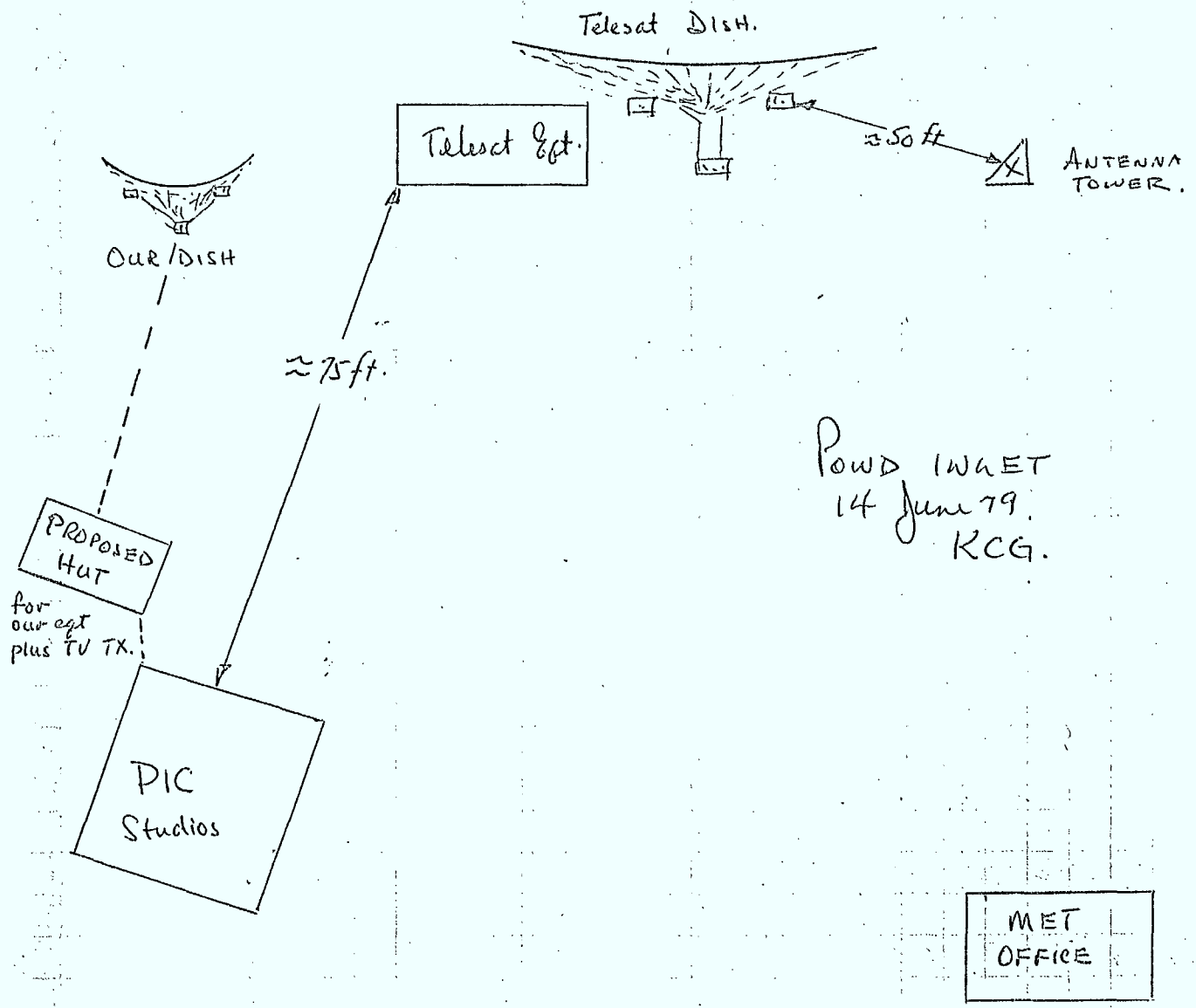
Looking at Anik-B from Community Hall



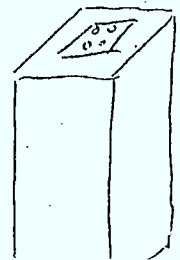
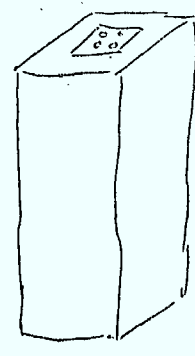
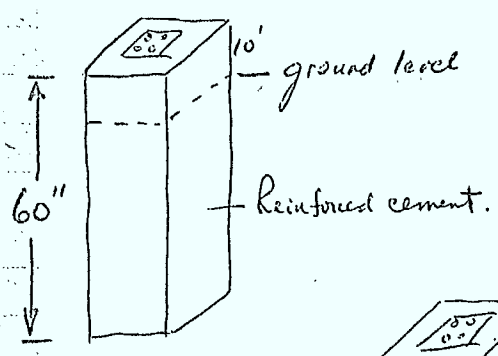
Adult Education Classroom



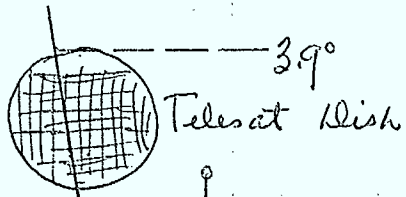
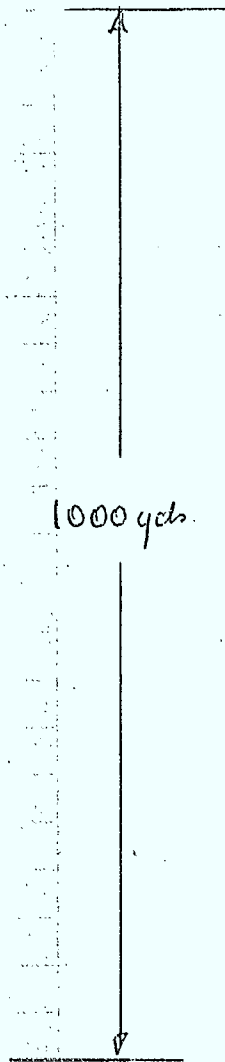
Inside Hamlet Office



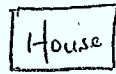
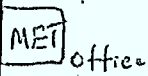
POWD IWAET
14 June 79.
RCG.



- Hermann Steltner suggests three such posts to hold our Dish.
- Cement free from Hudson Bay Co. via H. Steltner
- gravel free
- require plates & bolts plus a little reinforcing r
- cheaper than shipping in timber. (ok)
- Steltner advises gravel blows away (1 truck home in 6 days)



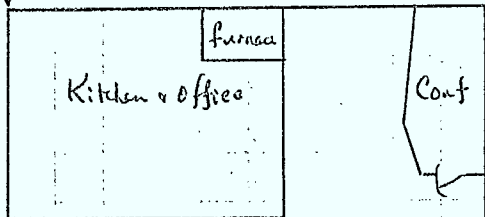
POWD INLET
14 June 79
KCG



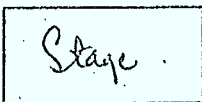
Road



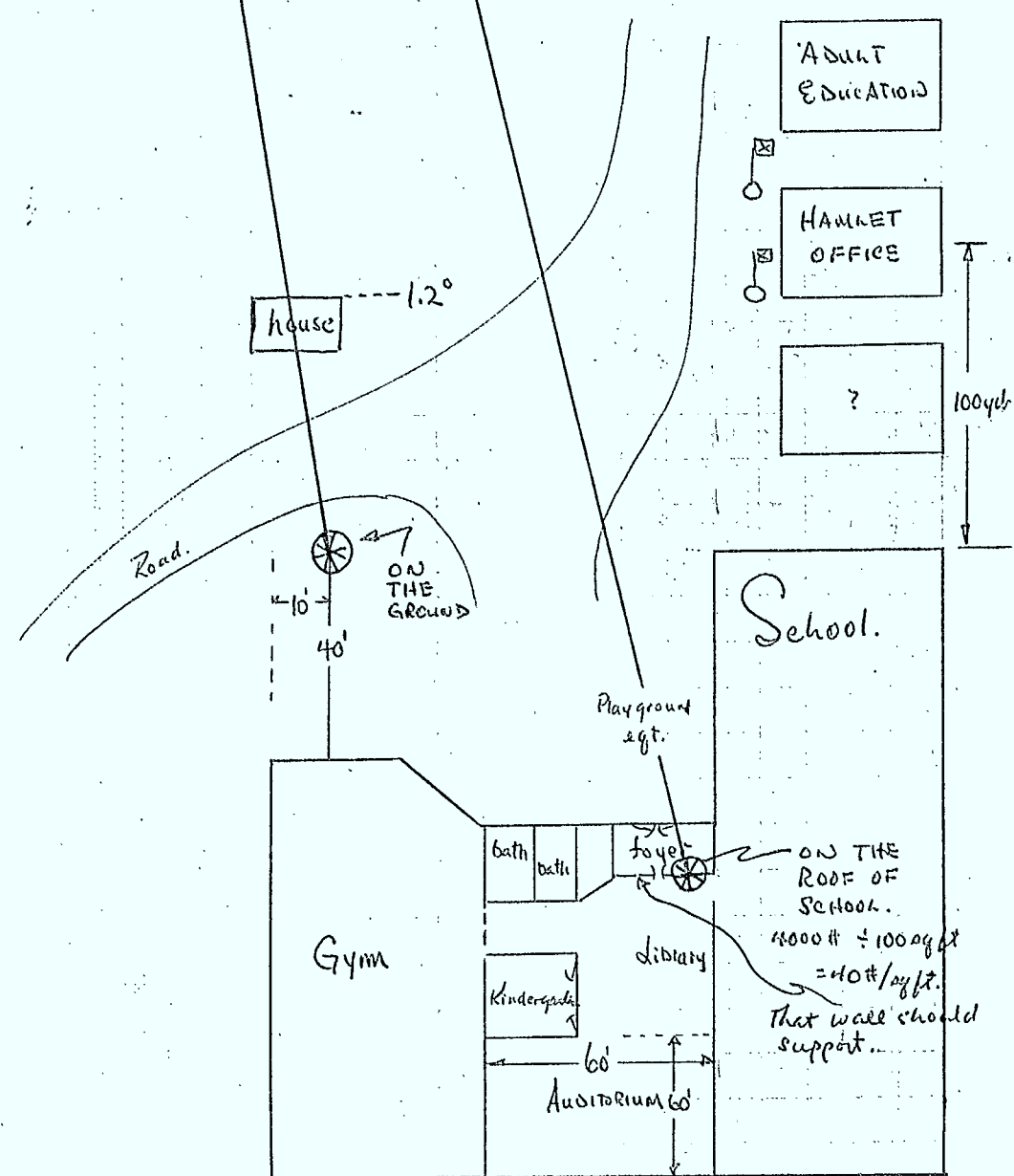
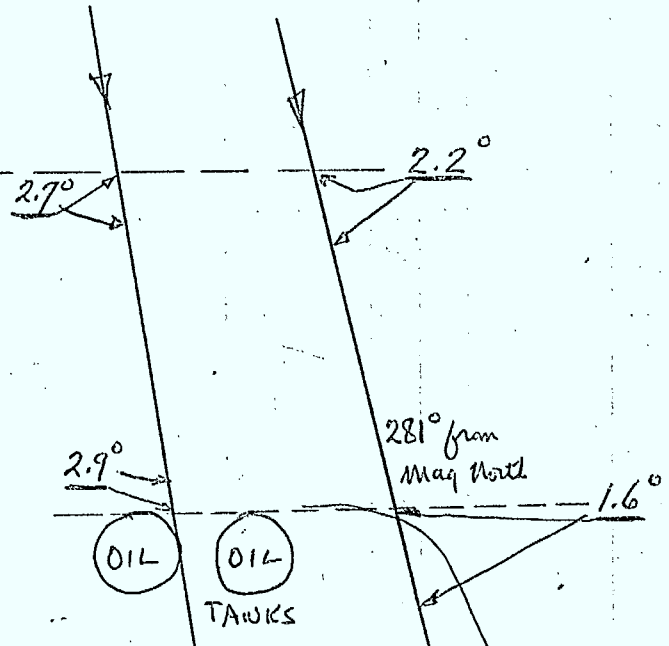
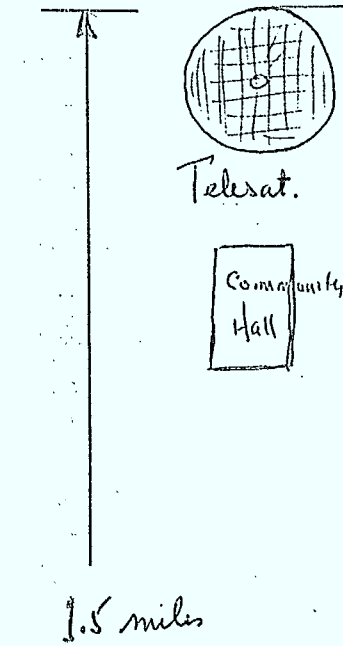
25 ft.



COMMUNITY HALL



POND INLET
14 June 79
KCCG



POND INLET, N.W.T.

1. Hudson's Bay Store:

Normal hardware components plus lumber and cement.

Co-op Store:

Same as above less cement.

2. Authority:

R.C.M.P. stationed here.

3. Churches:

Roman Catholic Church

Anglican Church

Pentecostal Church

4. Contacts:

Joshua Katsak

Phone: (819) 899-8869 Home.

Pond Inlet, N.W.T.

899-8934 (Hamlet's Office)

XOA 0S0

Hermann Steltner

Phone: (819) 899-8823 (Pond Inlet)

Pond Inlet, N.W.T.

(416) 934-3302 (St Catherines Ont.)

XOA 0S0

Mrs Sophia Steltner associated with the PIC Studios.

5. Accommodations:

Toonoonik-Sahoonik Hotel

Pond Inlet, N.W.T.

Phone: (819) 899-9912 and 899-9928

KCG June 14th, 1979.

