

TH900
.C3

c. 1 aa

canadian construction equipment





DEPARTMENT OF INDUSTRY
TRADE & COMMERCE
LIBRARY

APR 11 1974

AMEH

BIBLIOTHÈQUE
MINISTÈRE DE L'INDUSTRIE
ET DU COMMERCE

canadian construction equipment

Contents

- 3 Introduction
- 4 Allatt Limited
- 5 Barber-Greene Canada Ltd.
- 6 Bomag (Canada) Limited
- 7 Bombardier Ltd. (Industrial Division)
- 8 Canadian Ingersoll-Rand Company Limited
- 9 Caterpillar of Canada Ltd.
- 10 Clark Equipment of Canada
- 11 Consolidated Dynamics Limited
- 12 The Dominion Road Machinery Company Limited
- 13 Esco Limited
- 14 FMC of Canada, Ltd., Link-Belt Speeder Division
- 15 Forano Limited
- 16 Foremost International Industries Ltd.
- 17 Frederick Parker (Canada) Limited
- 18 Gardner-Denver Company (Canada) Limited
- 19 General Motors of Canada Limited, Diesel Division
- 20 Heede International, Ltd.
- 21 Hewitt-Robins (Canada) Limited
- 22 International Harvester Company of Canada, Limited
- 23 Mack Trucks Canada Limited
- 24 Marathon Equipment Ltd.
- 25 Sicard Inc.
- 26 Suntract Manufacturing Limited
- 27 Thomas Equipment Ltd.
- 28 Wabco Equipment of Canada
- 29 Zor Industries Limited
- 30 Canada's Construction Equipment Industry:
Who Makes What
The Manufacturers

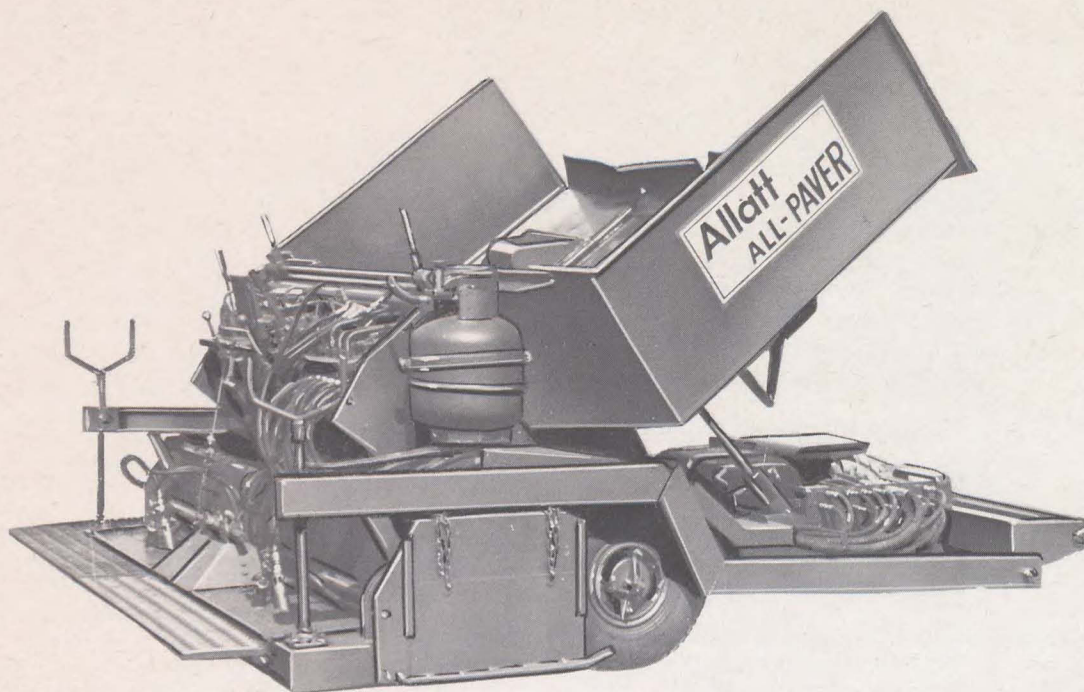
Expertise is born of exigency. Canada's vast spaces, dense forests, rugged terrain and harsh climate have posed many challenges to the nation's construction industry. To meet these challenges, Canadian manufacturers over the years have designed and developed equipment and machinery to tackle any construction task. Typical Canadian accomplishments include:

- Building the longest national highway in the world.
- Harnessing waterways for massive hydro-electric projects such as Churchill Falls in Labrador.
- Penetrating difficult unopened country to harvest the wealth of forests and mineral deposits.
- Constructing soaring office and apartment towers — the tallest building in the world is being built in Toronto.

This hard-won expertise and innovative ability has built a dynamic construction equipment industry in Canada, producing products that have established an enviable reputation for their high quality, efficiency, durability and competitive prices. And the word has spread abroad: Canadian manufacturers now sell construction equipment to Europe, the Middle East and Far East, Africa and South America.

A diverse cross-section of this equipment, produced by some of Canada's leading companies, is described in the following pages, including all-terrain vehicles, graders, log skidders, cranes, hoists, loaders, trucks, asphalt pavers and a host of others all excellently engineered.

This booklet has been published by the Canadian Department of Industry, Trade and Commerce in co-operation with the companies described. Distributors, dealers and users can be assured of prompt responses to their inquiries, and reliable service and parts supply wherever they are located. Further information is available from the companies themselves or from Canadian Government trade offices.



The Allatt All-Paver smooths the way for road users.

ALLATT LIMITED

1100 Finch Avenue West, Downsview, Ontario, Canada

Tel: (416) 661-2000 • Telex: 02-21149 • Cable: ALLTRACTOR

That smooth ride along today's fast and durable roadways is partly the result of paving equipment developed by such companies at Allatt Limited. Recently Allatt added to its line of asphalt pavers, the All-Paver Model B-200, a new rubber-tired fully self-propelled hydrostatic paver, equipped with folding hopper and augers.

The All-Paver can be towed to the construction site attached to any vehicle with a hitch, eliminating the need for a flat bed trailer. The engine-driven hydraulic system provides sensitive fingertip control. The paver has a variable speed of up to 65 feet (19.8 m) per minute, and left hand and right hand 2-foot (0.610 m) hydraulic strike-off extensions allow easy paving up to widths of 12 feet (3.658 m).

Another feature of the All-Paver is a hopper that dumps vertically up and down, complete with folding hopper wings. Wide base drive tires provide excellent flotation and positive trac-

tion at all times. Its twin discharge gates allow easy paving of a 4 foot (1.2 m) width by closing one of the discharge gates. The All-Paver has fewer wearing parts than other pavers, ensuring less downtime and practically no maintenance. Any qualified hydraulic mechanic can easily make repairs, and Allatt has chosen components that are available throughout the world.

Allatt Limited also produces a line of hydraulic strike-off extensions for pavers that add, within seconds, 4 to 8 feet (1.2 to 2.4 m) to the paving width (depending on the model). In addition, Allatt manufactures and markets throughout the world a complete line of replacement parts for Barber-Greene, Blaw-Knox and Cedarapids pavers. The company's operations are handled by the following Divisions: Tractor Parts Division, Asphalt Spreader Parts Division and Equipment Division. In Quebec, Allatt's marketing division is Candiac Tractor Parts Co.



Barber-Greene's wide choice of plants can produce all types of asphalt mixes.

Asphalt finishers handle small jobs and triple-lane superhighways with the same ease and precision.

BARBER-GREENE CANADA LTD.

401 Barber-Greene Road, Milton, Ontario, Canada

Tel: (416) 878-2815 • Telex: 06-961-249

The right equipment to make whatever type of asphalt mix is needed can be found in the complete line of Barber-Greene Canada Ltd. All the continuous and batch-type mixing plants are available for either stationary or portable use. Capacities range from a few tons an hour up to a full truck load of 21 tons (19 mt) in a single batch with the new BH Series Super Plant.

Self-erecting Batchpacs can be towed to the job site and fully erected without the use of auxiliary equipment. Surge plants combining mixing and storage in a single unit, Dryerpacs (dryer-dust collector combinations), feeding units for precise measuring of cold aggregates, surge systems, and a full range of pollution control equipment including fabric filter collectors, complete the company's line of asphalt mixing plants.

Telsmith aggregate production equipment, both portable and

stationary, is another Barber-Greene line. The broad range made includes gyratory breakers; crushers—jaw, Gyrasphere, intercone, roll; heavy-duty scalpers; heavy-duty vibrating grizzlies; screens — Vibro-King inclined, Pulsator 11 inclined, horizontal, rotary; feeders — plate, apron, vibrating grizzly, belt; Super Scrubbers; sand classifiers; dewatering and classifying tanks; screw rewashers; cyclone sand recovery units; sand tanks, and permanent belt conveyors.

New from Barber-Greene is a fleet of five asphalt paving machines, the 100 Series, covering the total range of paving applications from small jobs to super highways. Mounted on both crawlers and pneumatic tires, all models feature hydrostatic systems that give constant precision control of paving speed, feeders, screws, and automatic screed controls. New vibratory screed design provides uniform compaction at every width with two and a half times the usual vibratory intensity.



The Buffalo-Bomag's continuous full-width wheel coverage makes every pass count.

BOMAG (CANADA) LIMITED

1300 Aerowood Drive, Mississauga, Ontario, Canada
Tel: (416) 625-6611 • Telex: 06-961250 • Cable: BOMAGS

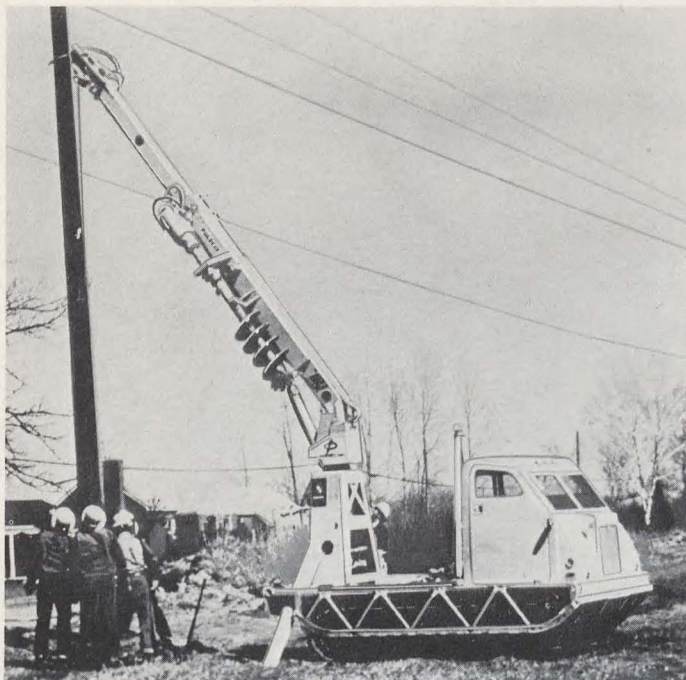
Designed by Bomag (Canada) Limited, the Buffalo Bomag K 300 High Speed Earth Kompactor can handle many jobs. Equally at home on highways, dams, housing developments and many other earth structures, it will compact cohesive, highly plastic materials such as silts and clay. Under certain conditions it also can work with sand, gravel, pit and crusher-run and soil cement.

This compactor is outstandingly flexible, largely because of its unique patented wheel design. Continuous rows of tapered segments are positioned so that those on the rear wheels run between those on the front. This provides a continuous, uninterrupted full-width wheel coverage on every pass, unlike conventional segmented wheel compactors which leave a series of depressions and uncompacted areas behind them, necessitating additional passes.

The K 300 has a high speed forward and reversing action with

speeds up to 20 mph (32 km/h). At working speeds of from 3 to 11 mph (5 to 18 km/h), it can generally build up the specified densities in two to five passes. Features include all-wheel drive, full power shift transmission, and full 80 degrees articulated steering which permits an inside turning radius of 108 inches (2,740 mm). A low centre of gravity and a total of 30 degrees of frame oscillation provide complete wheel-to-ground contact.

The spreader blade is 108 inches (2,740 mm) wide and 30 inches (762 mm) high, adjusting between 5½ inches (140 mm) below and 33 inches (838 mm) above ground level. Standard equipment includes two flood lights front and rear; instrument panel light; engine tachometer; hourmeter; gauges for oil pressure, oil temperature and water temperature; ammeter; operator's windshield; heavy-duty wheel fenders, and wheel cleaner teeth.



Muskeg Tractors can handle bushmowing, skidding, excavating, snow plowing, spraying, beach cleaning, fire control transportation and dozing.

BOMBARDIER LTD. **(INDUSTRIAL DIVISION)**

Valcourt, Quebec, Canada

Tel: (514) 532-2211 • Telex: 018-3120 • Cable: BOMBARSNOW

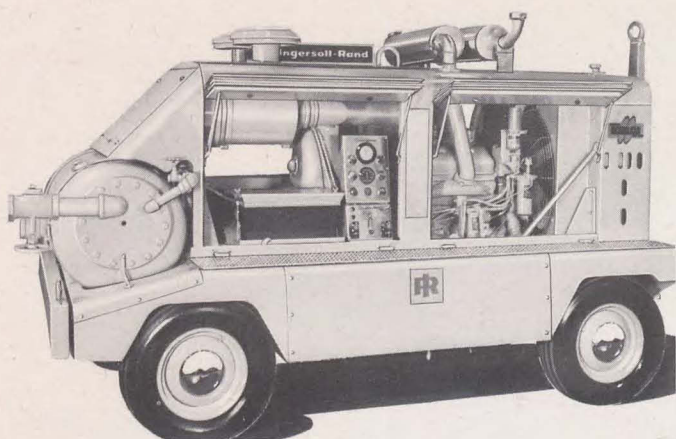
Operating at speeds of up to 23 mph (37 km/h), the rugged Muskeg Tractor from Bombardier Ltd. (Industrial Division) is one of the fastest heavy-duty machines of its type on the market, and few vehicles can match it for off-road construction and maintenance work.

Together with its partner, the Muskeg Carrier, it can be equipped with a broad range of construction, transportation and maintenance equipment. There is a choice of gas or diesel engine (fuel capacity is 18 U.S. gallons/68 litres) with specially designed power transmission system. Ground pressure is extremely low, even with a full payload of 8,000 pounds (3,632 kg) on the carrier. A flexible suspension system in combination with the unique Bombardier tracks keeps the units moving over a variety of difficult terrain. The machines have all-

welded, watertight construction with heavy-duty components.

Maximum slope performance on climb and descent is 40 degrees with a 25-degree side hill capability. Turning radius is 12 feet (3.66 m), ground pressure at zero-inch penetration is 1.52 psi (0.11 kg/cm²), and at 6-inch penetration is 1.20 psi (0.08 kg/cm²). The rubber and fabric track belt is reinforced with steel wire. Ground clearance is 14 inches (36 cm) and fording depth is 31 $\frac{1}{8}$ inches (80 cm). Final drive ratio is 1.68 to 1.

With the right attachments, the Muskeg can handle bushmowing, skidding, excavating, snow plowing, spraying, beach cleaning, fire control transportation and dozing.



Easier operation and longer unit life are built into the Spiro-Flo compressor.

Built for a variety of jobs, the SP-54 vibratory drum compactor handles more work in less time.

CANADIAN INGERSOLL-RAND COMPANY LIMITED

620 Cathcart Street, P.O. Box 610, Station "B", Montreal 111, Quebec, Canada

Tel: (514) 395-7321 • Telex: 0126157

More air power is a major feature of the Spiro-Flo portable compressor Model DXL-750 from Canadian Ingersoll-Rand Company Limited. Many innovations make it easier to operate and lengthen its life. A new compressor design supplies full capacity and pressure at moderate engine speeds; an unsymmetrical rotor design increases efficiency; a double safety oil system prevents compressor damage, and an exclusive separator removes oil from the air.

Compressor performance is unmatched both at part load, where most portables run most of the time, and at full capacity of 125 psi (8.75 kg/cm²), without straining the engine. New XL helical rotors feature a swept-back profile that improves remarkably hydraulic characteristics in handling the air-oil mixture at all speeds. The exclusive I-R gear drive permits both the engine and the compressor to run at their best operating

speeds for maximum efficiency.

Output is reduced from full load to approximately 60 per cent by a speed pressure regulator which slows the engine. Further reduction to zero capacity is accomplished by the inlet valve. A knob on the control panel permits easy adjustment of discharge air pressure between 70 and 125 psi (4.9 to 8.75 kg/cm²).

Ingersoll-Rand also supplies the JR-300M Jackdrill, a high performance integrated pneumatic rock drill and feed leg unit designed for drilling in any position; the SP-54 self-propelled vibratory drum compactor with a 54-inch (137-cm) drum; the Model 15NM-2G two drum electric hoist; the Model PB-6 paving breaker with forged steel cylinders and casings, and the Northern Jumbo mobile parallel drilling rig.



Caterpillar's wheel loaders are dependable and easy to maneuver.

CATERPILLAR OF CANADA LTD.

1550 Caterpillar Road, Mississauga, Ontario, Canada
Tel: (416) 277-0363 • Telex: 06-961151

Tough and easy to handle, Caterpillar's 950 and 966C wheel loaders, manufactured by Caterpillar of Canada Ltd., have full power shift transmissions with four forward and four reverse speed ranges. The single lever shift controls provide fast, easy changes in speed and direction. An articulated frame with hinge points midway between front and rear axles means rear and front wheel traction at all times. Both machines include standard comfort and safety features and a wide range of attachments are available for maximum user value.

The 950 is powered by a D330, 130 flywheel horsepower engine with 4 cylinders, 425 cubic inch (7 liter) displacement, turbo-charger, precombustion fuel system with individual free injection pumps. The torque converter is single stage, single phase. Transmission has maximum forward speed of 20.6 mph (33.3 km/h), reverse 24.6 mph (39.6 km/h). The chassis has four-

wheel drive with planetary final drives, a fixed front axle and oscillating rear axle. The wheel base is 115 inches (2,900 mm), tread 77 inches (1,960 mm). Machine operating weight is 24,000 pounds (10,900 kg).

A more powerful machine, the 966C is driven by a D330, 170 flywheel horsepower engine with 6 cylinders and 638 cubic inch (10.5 liter) displacement. Other major differences include a maximum forward speed of 21.1 mph (34 km/h), reverse 25.0 mph (40.2 km/h); wheel base 122 inches (3,100 mm), tread 85 inches (2,160 mm), and machine operating weight 32,400 pounds (14,700 kg).

Also from Caterpillar: motor graders, pneumatic-tired and solid-tired lift trucks in a variety of sizes and specifications, and log skidders.



Clark Michigan tractor shovels can handle up to 22 cubic yards (17 m³) in one bite.

CLARK EQUIPMENT OF CANADA *Division of BLH Canada Ltd.*

Michigan Boulevard, St. Thomas, Ontario, Canada

Tel: (519) 631-9420 • Telex: 024-73550 • Cable: CLARCAN

Construction and material handling equipment that maintains top performance under the most difficult conditions is Clark Equipment's specialty. The heart of all Clark-built construction-handling machinery is the Clark-designed and built Powertrain that provides maximum interchangeability between models for minimum downtime and repair costs.

The Clark Michigan line of rubber-tired tractor shovels includes eight different models. The buckets range in capacity from one to 22 cubic yards (0.765 to 16.83 cubic meters). The company also makes a complete line of Clark Ranger log

skidders, including both cable skidders and grapple skidders from 83 hp to 282 hp.

All eight models of the Clark Michigan tractor shovels can be converted to log loaders by replacing the front-mounted bucket with logging forks. This gives a range of log-loading machines from 67 hp through 612 hp.

Clark Equipment of Canada machines are all of the most modern design and are built from the newest and most efficient materials available.



Consolidated Dynamics chassis can be built to meet local requirements.

CONSOLIDATED DYNAMICS LIMITED

1666 Shawson Drive, Mississauga, Ontario, Canada
Tel: (416) 678-2960 • Telex: 06-219516 • Cable: CONSODYN

Transit crane carriers designed to meet world-wide road regulations for weight and width will be produced to order by Consolidated Dynamics Limited. The company also works closely with crane manufacturers to meet the special carrier requirements of the various types of cranes.

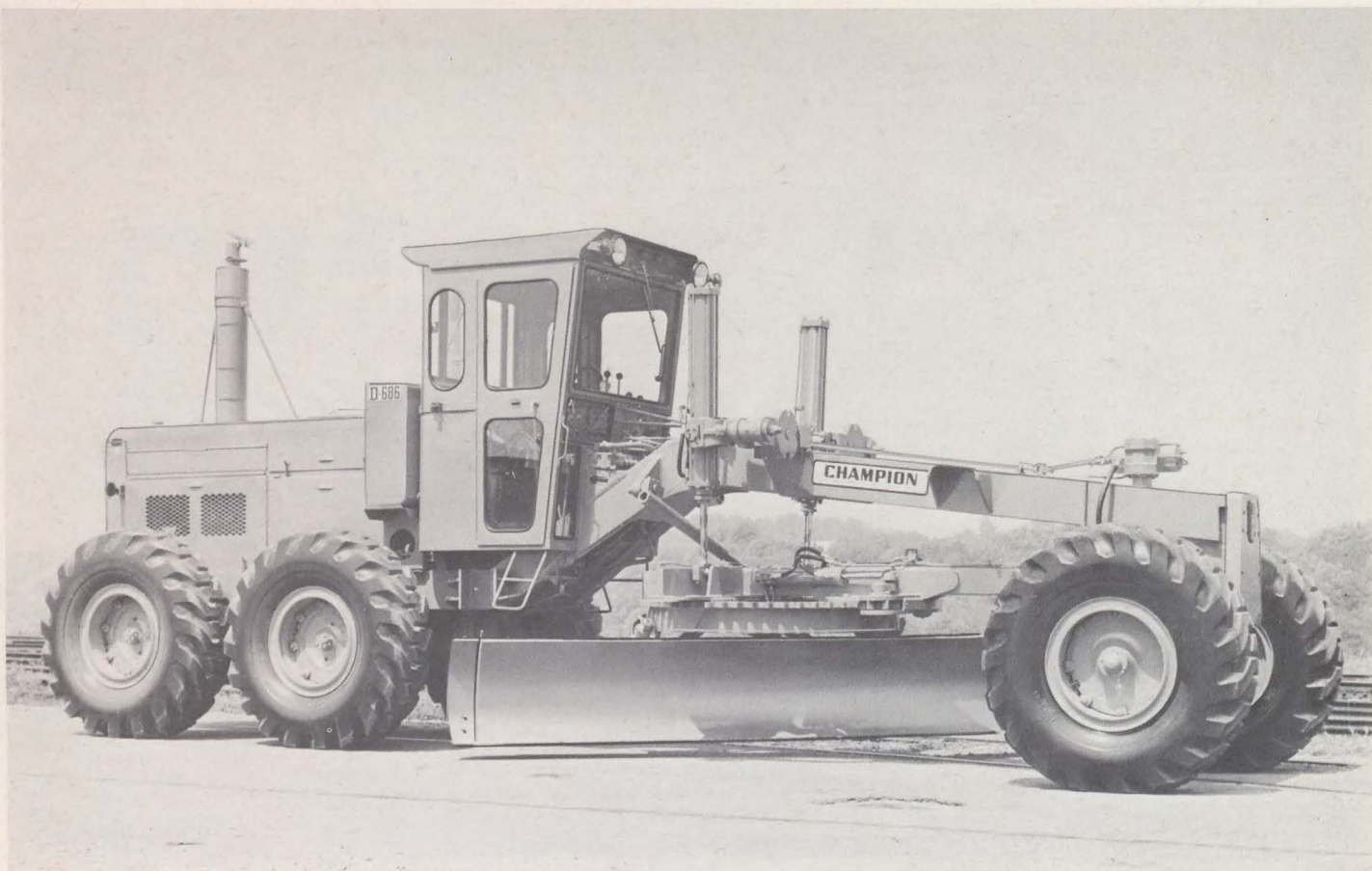
Consolidated's multi-axle chassis with a maximum over-all width of from 8 to 13 feet (2.4 to 3.9 m) are available in a capacity range of 18 to 300 tons (16 to 272 metric tons). The drive axle configurations of 8 x 4, 10 x 6 or 12 x 6 are easier on roads and on tires because they provide better weight distribution. The 12615 model, for example, has 18 tires of which 12 are driving and six non-driving for steering.

Standard engine for all Consolidated vehicles is Cummins

diesel. However, optional General Motors or Caterpillar engines can be supplied.

The cranes are welded to the carrier on a swing circle or ring gear. The low-profile design of the two-man cabin makes it easier to enter and provides good visibility. It is fitted with a safety glass windshield and sliding side windows. Built-in shock absorbers are another feature. Front and rear fenders are designed to form continuous non-skid walkways. Some of Consolidated's models are offered with one-man cabins; all can be converted to right hand drive.

Consolidated Dynamics will make arrangements to provide parts and service facilities in the countries of its overseas customers.



Years of concentration on this one product have perfected the Champion road grader.

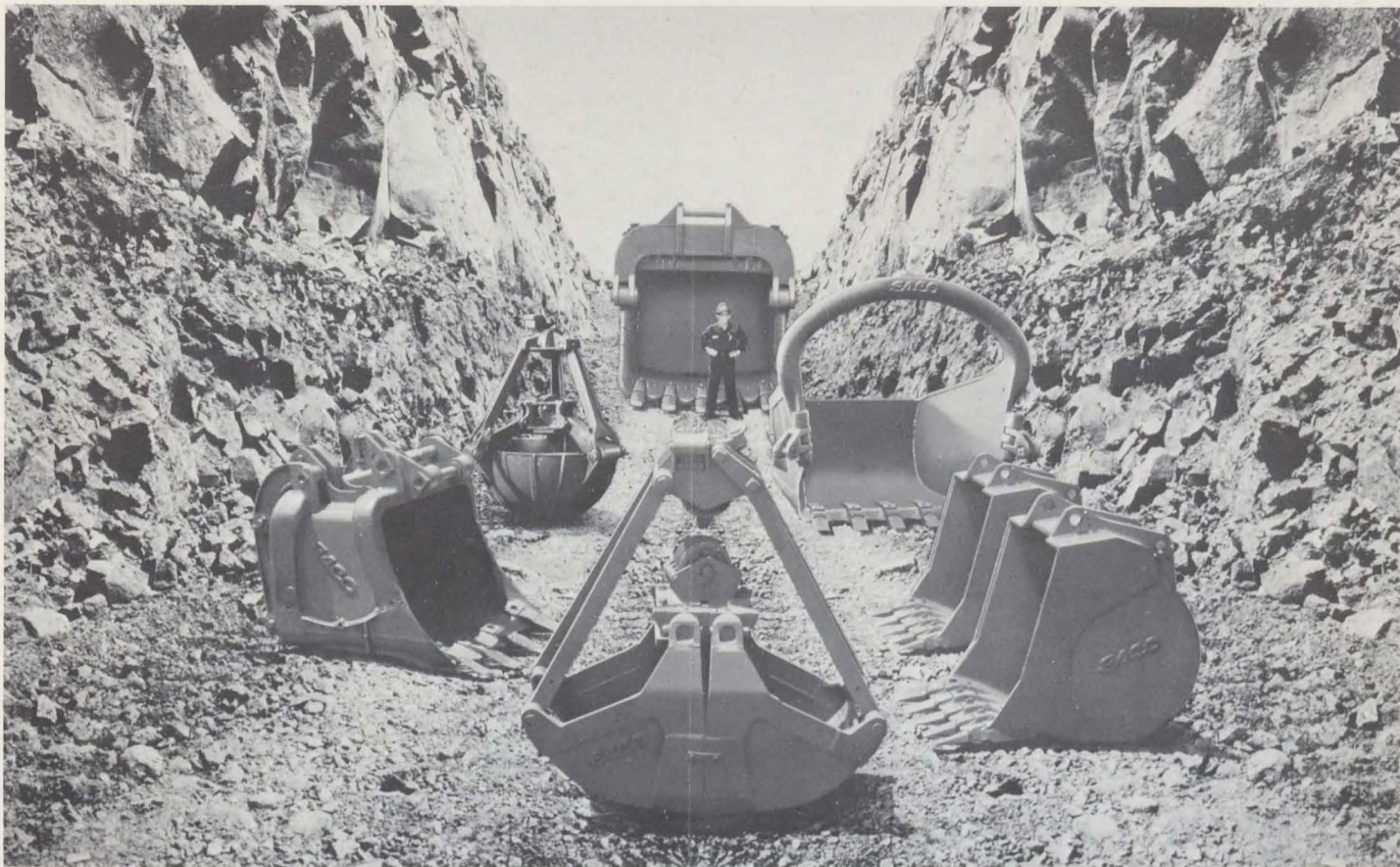
THE DOMINION ROAD MACHINERY COMPANY LIMITED

Goderich, Ontario, Canada

Tel: (519) 524-7374 • Telex: 069-55120 • Cable: DRMCO

A company can declare itself a specialist in its field after devoting all its resources for many years to the development and improvement of a single product. The Champion diesel-powered road grader line is the sole output of the Dominion Road Machinery Company Limited which was founded in 1886. Years of experience and concentrated research has brought this line to a high standard of technical excellence, which with efficient reliable sales, service and parts supply, has put the Champion on job sites in 42 countries.

There are six models available — three powered by Detroit diesel engines and three offering a choice between Detroit and Cummins diesel. Horsepower range is from 100 to 220 and weights vary from 25,000 to 32,000 pounds (11,340 to 14,515 kg). Controls on all models are fully hydraulic. Four units have constant mesh 8 x 4 speed transmission, the other two are equipped with power shift with torque converter.



Dippers, buckets and grapples as big as required are made by ESCO.

ESCO LIMITED

1855 Kingsway, Port Coquitlam, British Columbia, Canada
Tel: (604) 942-7261 • Telex: 045-08843

Digging, loading and crushing equipment from Esco Limited chews up the rockiest problems with massive bites and, backed by today's high horsepower machinery, can literally move mountains — earth, ore or rock. Dipper, grapple and bucket lines include shovel dippers, hoe dippers, draglines and clamshells, crusher wear parts, stainless steel merchandise and logging/rigging equipment.

Esco buckets and dippers dig in, dig to the inch, come up heaping and dump clean, performance that is the result of years of practical experience in the field by the firm's engineers.

The company makes more than 75 different shovel dipper models, from $\frac{1}{2}$ to more than 15 cubic yard capacity (0.3825 to 11.475 m³). Numerous options permit the dippers to be tailored to the job. The two-piece conical teeth that are a feature of the shovel dipper come in an array of point sizes to fit many digging, loading, trenching and dredging machines.

All the thousands of Esco products share a common origin as they are designed to solve problems of abrasion, impact, corrosion and extremes of temperature, and each benefits from the company's quality control facilities that include computers, chemical laboratory, spectograph, vacuum quantograph and gas analyzer.



The rope-operated crawler crane, Link-Belt Speeder LS-338, has a 100-ton capacity.

The Link-Belt Speeder LS-5000 has a 1 1/2 -yard capacity hydraulic hoe.

FMC OF CANADA, LTD. ***Link-Belt Speeder Division***

P.O. Box 190, Dundas Street East, Woodstock, Ontario, Canada
Tel: (519) 539-9844 • Telex: 024-7410

One of a line of carrier-mounted hydraulic cranes available from Link-Belt Speeder Division of FMC of Canada, Ltd., the HT-300 incorporates a proven concept with a durable four-axle carrier specially designed for the job.

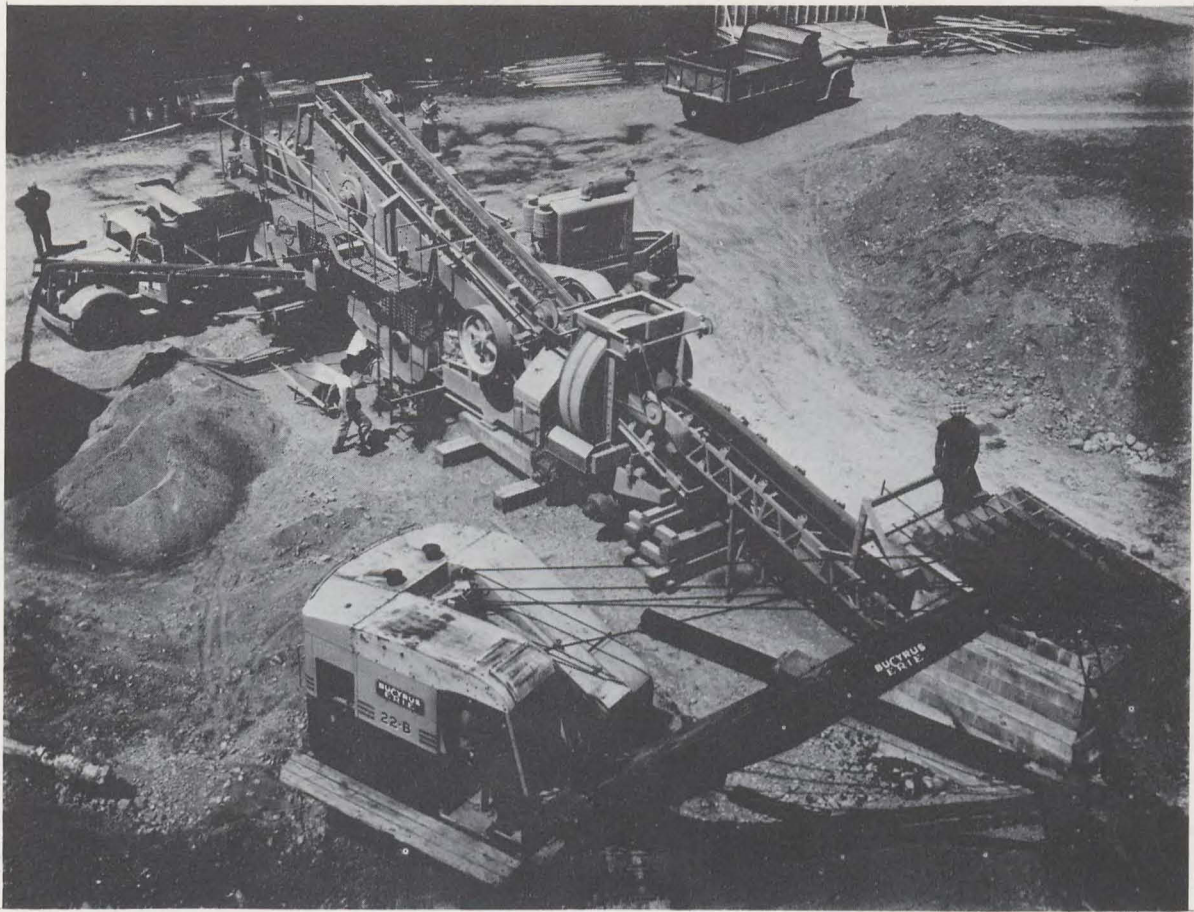
The carrier's box-type, high-strength alloy steel frame gives a desirable weight-to-strength ratio. Its cab is mounted forward for easier operator entrance and lower over-all height. The HT-300 carrier features an 8 x 4 drive and tandem front and rear axles for excellent load-carrying capacity and machine flotation. The diesel engine with 13 speed transmission delivers up to 46 mph (74 km/h) with as low as .87 mph (1.38 km/h) available from a two-speed range (direct and low) auxiliary transmission.

The hydraulic crane upper is mounted to the carrier by a turntable bearing with integral swing gear. Hydraulic outrigger

boxes are pin-connected to the carrier for quick removal. Outriggers are controlled from the crane upper cab. The engine that powers the carrier also supplies hydraulic power for all the crane's functions.

Link-Belt Speeder has designed a swing and hoist speed reducer and a unique load hoist and lowering arrangement which it offers with the HT-300. Swing power is from the two-directional hydraulic motor into the gear speed reducer and then into the swing shaft pinion. Individually controlled power hydraulic two-shoe clutches and mechanically controlled wire rope drum brakes make it possible to lower the hook or load by gravity pull and to "free spool" the rope drum.

For additional reach, manual boom extensions and jibs are available.



Forano mobile crushing and screening plants produce up to 300 tons (305 metric tons) of gravel an hour.

FORANO LIMITED

1600 St-Paul Street, Plessisville, Quebec, Canada

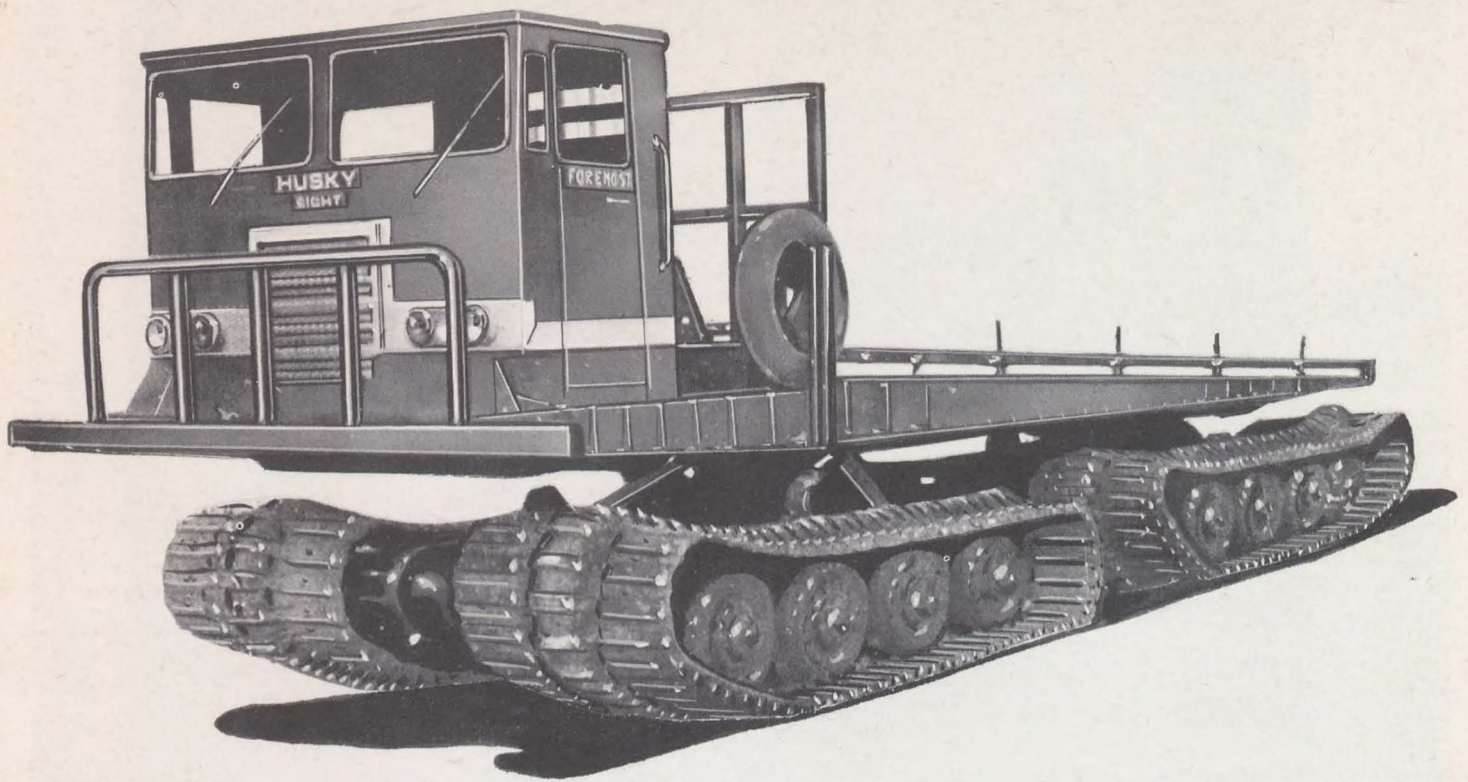
Tel: (819) 362-7361 • Telex: 01-26116 • Cable: FORANOLINE

For the early road builders, crushing stone was a slow and laborious task calling for large numbers of men, muscles and mauls. Today, gravel crushing equipment developed by Forano Limited can produce up to 300 tons (305 metric tons) of crushed gravel an hour right on the spot, duplicating the work of hundreds of men.

Forano's "Canadian" is a medium-size mobile gravel crusher and screening plant with a capacity of 150 to 300 tons (152 to 305 metric tons) an hour. It consists of a jaw crusher, roll crusher, vibrating screen, revolving elevator and belt conveyors, all on a common chassis with pneumatic rubber-tire wheels. The entire plant is powered by a 215 hp diesel unit mounted on a separate rubber-tired dolly.

The Forano "Junior" mobile gravel crushing and screening plant consists of diesel engine, jaw crusher, roll crusher, vibrating screen, revolving elevator and belt conveyors, mounted on a common chassis with pneumatic rubber-tire wheels for ease in moving from site to site. It is ideally suited to relatively small operations requiring a capacity of 50 to 60 tons (51 to 61 metric tons) an hour.

Other Forano products include conveyors and elevators, mechanical power transmission equipment, standard transmission products, apron feeders, industrial loaders, and custom-built machinery.



The Husky Eight thrives on almost anything nature can throw at it.

FOREMOST INTERNATIONAL INDUSTRIES LTD.

1616 Meridian Road Northeast, Calgary, Alberta T2A 2P1, Canada
Tel: (403) 272-3322 • Telex: 038-22772

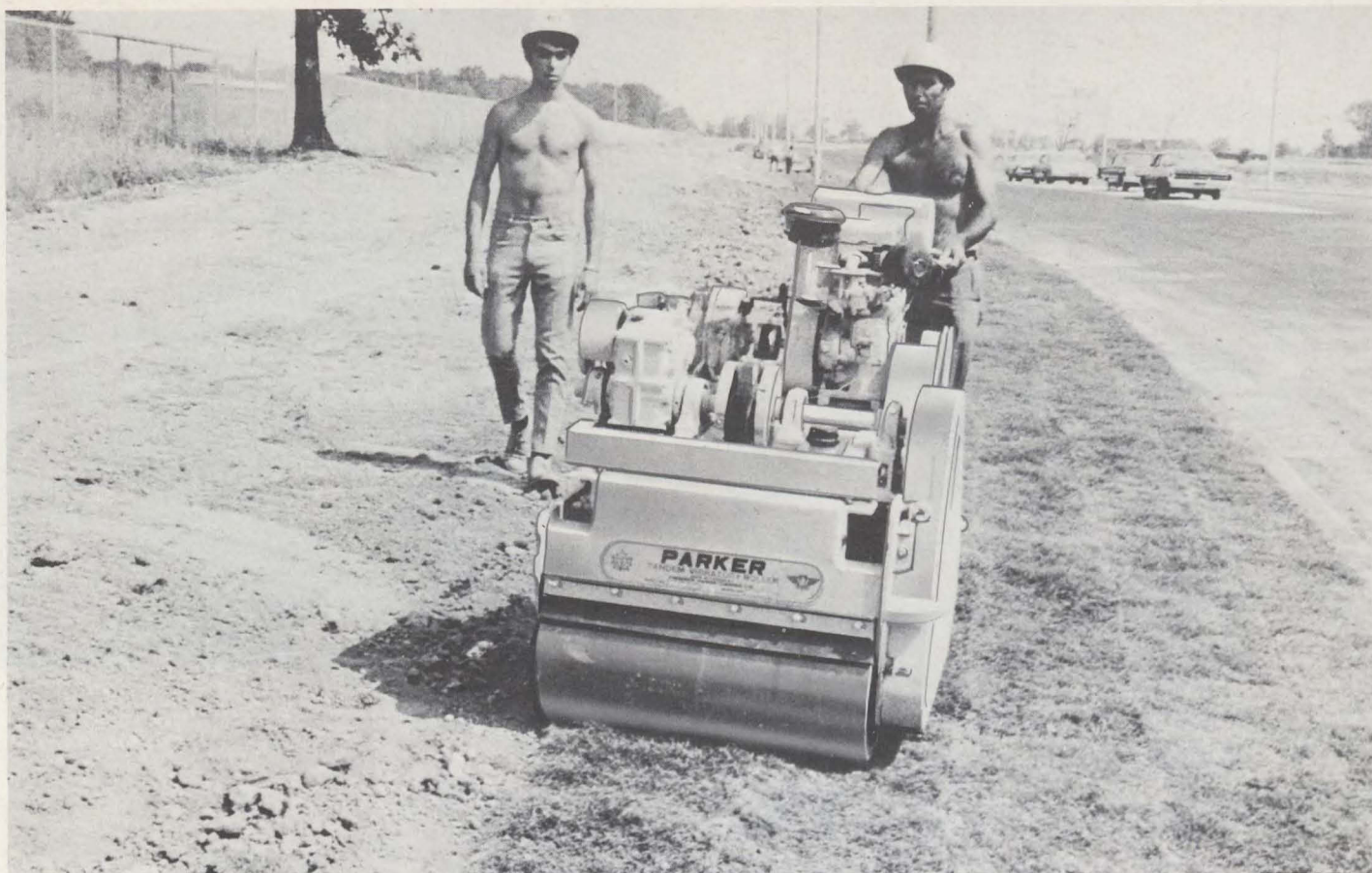
Tracked carriers that operate equally well in Arctic conditions or in desert and sand are the specialty of Foremost International Industries Ltd.

The Husky series is the largest, most rugged of the vehicles now manufactured by the company. The Eight and Six models can carry 20 to 45 tons (22 to 49 metric tons) of payload. The four track design allows power to be used on all four tracks at all times. Originally developed for use in the Canadian Arctic, the Husky has proved its mobility in deep swamps, muskeg, and sand, and on extreme grades.

Foremost's tracked carriers have proved their value in all sectors of the petroleum industry as well as in power line construction and supply transportation in remote areas.

The company's Dawson series, with all the advantages and capabilities of the larger vehicles, are designed to haul smaller loads. The line is made up of the Dawson Seven, Six, Five and Four, each with similar components but with a varying axle and payload capacity.

Other heavy-duty products manufactured by Foremost are the Model 195 tracked log skidder designed for the forest industry and particularly valuable in wet, marshy, swampy conditions and ecological sensitive areas; the Yukon and Super Yukon all-purpose carriers, and the Delta series of flotation-tired vehicles which have greater speed and mobility than tracked vehicles.



Parker vibratory rollers are powerful but capable of precise close-in operation.

FREDERICK PARKER (CANADA) LIMITED

441 Ellesmere Road, Scarborough, Ontario, Canada

Tel: (416) 759-6721 • Telex: 02-29391 • Cable: CRUSHING TOR

Here's a tandem vibratory roller that is like a gentle giant. It is capable of a 6,000-pound (2,722 kg) centrifugal force when faced with difficult ground conditions and yet is able to roll to within $\frac{3}{4}$ inch (1.9 cm) of an object on its right hand side.

Frederick Parker (Canada) Limited designed its vibratory roller for simplicity of service and maintenance, and built it to stay together no matter how tough or long the compacting required. The company has incorporated in the rugged dependable machine many practical suggestions from field users and mechanics.

Parker tandem vibratory rollers are available with 30 or 36 inch (75 or 90 cm) wide rolls. The standard model has a gas engine but diesel engines are optional. Hydraulic power steer-

ing is also available. Compaction force at 2,800 rpm for the 30 inch (75 cm) model is 12,000 pounds (5,450 kg) and for the 36 inch (90 cm) model is 16,000 pounds (7,300 kg). Travel speed is 100 feet (30.48 m) per minute. The smaller model weighs 2,016 pounds (916 kg), the larger 2,875 pounds (1,352 kg).

The machine is ideal for base work, fill lifts, finishing and grass verge road shoulder work. The vibrating mechanism is externally placed for centrifugal force blows and can be increased or decreased on the work site in a simple, five-minute operation. Strip-down time is two hours for easy servicing.

Frederick Parker also supplies a vibrating plate tamper and a compaction rammer.



Gardner-Denver portable air compressors feature Thriftmeter control of engine speed to air demand.

B67 paving breakers have a "T" handle and latch-type steel retainer.

GARDNER-DENVER COMPANY (CANADA) LIMITED

1800 Ellesmere Road, Scarborough, Ontario, Canada

Tel: (416) 291-2551 • Telex: 022-320 • Cable: GARDTOR

Heavy-duty portable air compressors for the construction industry from Gardner-Denver Company (Canada) Limited incorporate compact and trouble-free rotary screw compressors powered through flexible couplings by liquid-cooled diesel engines. Spring mounted on pneumatic wheels with drawbar, the machines are enclosed within canopies that can be locked. The compressors have electric starting and Thriftmeter control which regulates engine speed to air demand. Safety shut-down systems protect against low engine oil pressure, high engine temperature and high discharge air temperature.

Specifications for compressors on two pneumatic tires are: Model SP150D, 150 cfm at 100 psig (4.2 m³/min at 7.03 kg/cm²), weight 2,975 pounds (1,350 kg); Model SP185D, 185 cfm at

100 psig (5.2 m³/min at 7.03 kg/cm²), weight 3,265 pounds (1,470 kg).

Lines with four pneumatic tires include: Model SP450D, 450 cfm at 100 psig (12.7 m³/min at 7.03 kg/cm²), weight 7,210 pounds (3,260 kg); Model SP600D, 600 cfm at 100 psig (16.9 m³/min at 7.03 kg/cm²), weight 9,170 pounds (3,960 kg); Model SP750D, 750 cfm at 100 psig (21.2 m³/min at 7.03 kg/cm²), weight 9,480 pounds (4,300 kg).

Also available from Gardner-Denver are spaders and paving breakers with D and T handles and latch-type steel retainers, and hand-held, feed-leg and stoping drills.



Terex front end loaders have full power steering at engine idle.

Diesel-electric TEREX 33-15 rear dump haulers feature railway locomotive-type traction motors.



GENERAL MOTORS OF CANADA LIMITED DIESEL DIVISION

P.O. Box 5160, London 12, Ontario, Canada
Tel: (519) 451-3600 • Telex: 024-7231

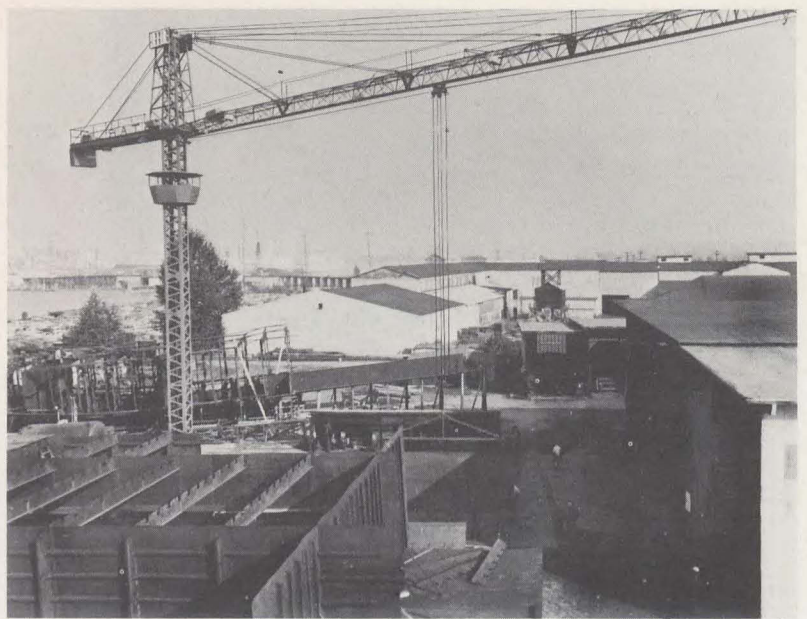
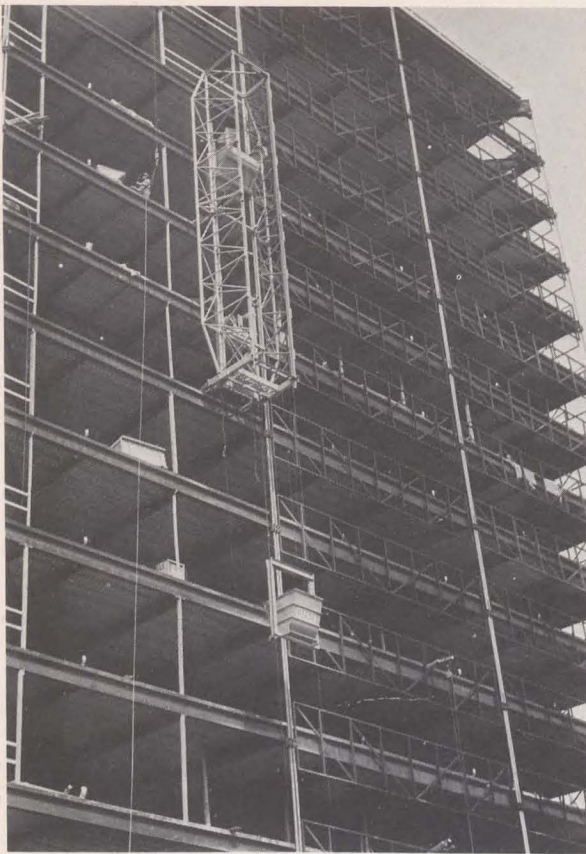
Field proven for profitable production, the Terex Series 72 front end loaders from the Diesel Division of General Motors of Canada Limited feature "pivot steer". This development locates the hinge pin one-third the distance from front to rear wheels, providing exceptional maneuverability and excellent tipping loads for greater stability. Because cycle time is shortened, production and profits increase.

General Motors two-cycle diesels and transmissions are carefully matched in all Terex loaders to provide the correct power balance for maximum production. Full floating axles and out-board mounted planetaries transmit torque directly to the wheels. An exclusive feature of the Terex line is Accumulator Steering which provides full power steering at engine idle. A

complete line of attachments matches Terex loaders to a multitude of jobs.

Three models are available with gross hp of 151, 163 and 202 respectively, with full turn tipping loads of 18,000, 19,400 and 24,700 pounds (8,165, 8,800 and 11,200 kg). Bucket sizes range from 2½ to 6 cubic yards (1.91 to 4.85 m³), based on application. Turning circles are 21 feet 3½ inches, 22 feet 5 inches and 23 feet 6 inches (6,490, 6,883 and 7,162 mm). All models provide 60 degree pivot steer and 42 degree bucket steer.

Terex also offers a complete line of rear dump off-highway haulers from 22 to 150 ton (19.64 to 133.9 metric ton) payload capacity with a wide range of options to meet special requirements.



The Yo-Yo Hoist puts a lot of concrete-moving ability in one man's hands. Heede climbing cranes are available in a variety of capacities and sizes.

HEEDE INTERNATIONAL, LTD.

3140 St. John's Street, Port Moody, British Columbia, Canada
Tel: (604) 937-5551 • Telex: 045-1363 • Cable: FALCON

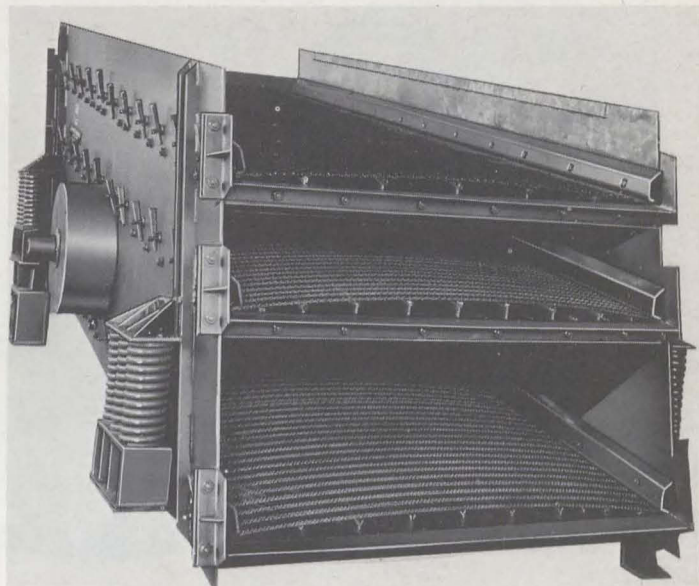
Can one man deliver 60 cubic yards (45.9 m³) of ready-mixed concrete per hour to a 200-foot (60.9 m) elevation? Easily, if the man is at the controls of a Yo-Yo Hoist by Heede International, Ltd.

Designed to raise ready-mixed concrete up the outside wall of a multi-storey building under construction and deliver it to a designated floor, the Yo-Yo can be used on structures up to 1,000 feet (304 m) high. Bucket capacity is 1.5 cubic yards (1.15 m³).

The hoist is operated by an electrically powered winch system. The main mast section consists of an inner and outer section.

The inner section has an electrical rack and pinion-raising mechanism that allows it to position the receiving hopper for the concrete at the desired floor level. Both inner and outer mast sections are anchored by bolting to brackets welded on the building.

When pouring has been completed at one floor, the unit is raised to the next pouring position by unbolting the inner mast section, raising it to the new position and rebolting it. Four floors can be poured before it is necessary to unbolt the outer mast section, which is then lifted to the new position by the raising mechanism. A variable speed control gives a maximum hoisting speed of 300 fpm (91.44 metres per minute).



A Hewitt-Robins portable primary jaw crusher at work.

Hewitt-Robins vibrating screens are built to handle almost any bulk material from fine powders to coarse rocks and ores.

HEWITT-ROBINS (CANADA) LIMITED

750 LeBeau Boulevard, St. Laurent, Montreal 379, Quebec, Canada

Tel: (514) 332-1280 • Telex: 01-26687

An extensive range of portable plants is available from Hewitt-Robins (Canada) Limited. Standard designs include primary jaw or impact crushing units, cone or double roll crusher secondary plants, portable hammermill plants and high capacity dual-crushing and screening combinations. Special equipment to suit specific requirements can be built.

The plants use Hewitt-Robins Eliptex feeders, screens, crushers and conveyors with full service and parts backup. Equipment may be driven by diesel power to form self-contained units or with electric power from any suitable source.

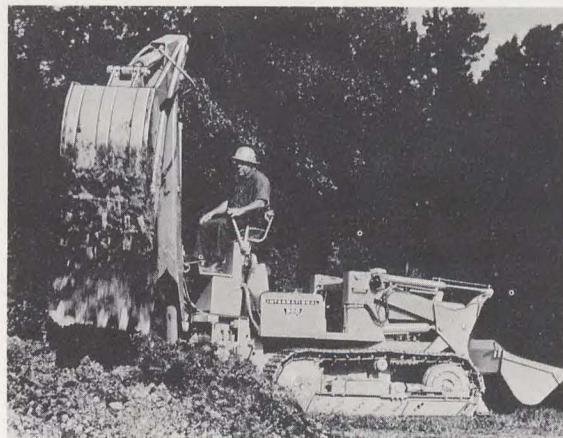
The Hewitt-Robins line includes: Grizzly King extra heavy-duty single toggle jaw crushers in 11 models, 12 x 36 inches to 48 x 60 inches (30.48 x 91.44 cm to 121.92 x 152.4 cm); heavy-duty single toggle jaw crushers in nine models, 10 x 16 inches to

30 x 48 inches (25.4 x 40.64 cm to 76.2 x 121.92 cm).

Double roll crushers come in eight models, 24 x 16 inches to 48 x 24 inches (60.96 x 40.64 cm to 121.92 x 60.96 cm); single rotor impact crushers, four models; hammermills, 11 models, 12 x 24 inches to 48 x 32 inches (30.48 x 60.96 cm to 121.92 x 81.28 cm).

The company produces eight standard models of portable primary jaw crushing plants, two standard models of portable primary impact crushing plants, portable roll secondary crushing plants, and portable cone secondary crushing plants, and five standard models of portable dual crushing plants.

Hewitt-Robins also manufactures three styles of vibrating screens and two of vibrating feeders.



Advanced engineering puts the Hough 560 Pay loader in a class by itself.

The 500C crawler, ideal for smaller applications, with the 75 loader and 3142 backhoe.

INTERNATIONAL HARVESTER COMPANY OF CANADA, LIMITED

208 Hillyard Street, Hamilton, Ontario, Canada

Tel: (416) 549-5231 • Telex: 021-756

For more than 30 years, Hough Pay loaders from International Harvester Company of Canada, Limited have been described as the finest rubber-tired loaders in the industry. What sets Hough machines apart from the rest is, among other things, the advanced engineering that has created many work-saving firsts. Another Hough characteristic is a simplicity of design that boosts operator efficiency and production and virtually eliminates fatigue.

Features of the 11 Pay loaders in the Hough line are faster hydraulics, more efficient power, improved construction and better weight distribution. There is a wide range of attachments too.

The 560 Pay loader has an International DT-817B, four-cycle diesel engine, turbocharged and intercooled with direct injection. Flywheel horsepower is 370 at 2,200 rated rpm. This

model has a power shift transmission of the countershaft type that provides three speeds forward and reverse. Lifting capacity is 66,022 pounds (29,947 kg) at 22 inches (55.8 cm) and maximum dump clearance is 12 feet 5 inches (378 cm). The general purpose bucket is 140 inches (355 cm) wide with a capacity of 3,000 pounds per cubic yard (1,780 kgm³). Heaped capacity is 6.5 cubic yards (4.97 m³), struck capacity 5.75 cubic yards (4.39 m³). Operating weight is approximately 76,000 pounds (34,473 kg).

The company also manufactures the 500C crawler tractor (loader and dozer models), the only under 70 hp crawler delivering 44 hp with torque converter. A hydraulic reverser transmission is available with either a torque converter or direct drive and there is a choice of gas or diesel engines with either transmission.



This Mack mixer delivers a 14 cubic yard (10.7 m³) load.

This low bed float tractor has a 325 hp diesel engine.



MACK TRUCKS CANADA LIMITED

1350 The Queensway, Toronto 18, Ontario, Canada

Tel: (416) 255-1311 • Telex: 02-29133 • Cable: MACKAN

More and more construction firms are buying their "Muscle from Mack", selecting from the complete line of heavy-duty construction and transport vehicles produced by Mack Trucks Canada Limited.

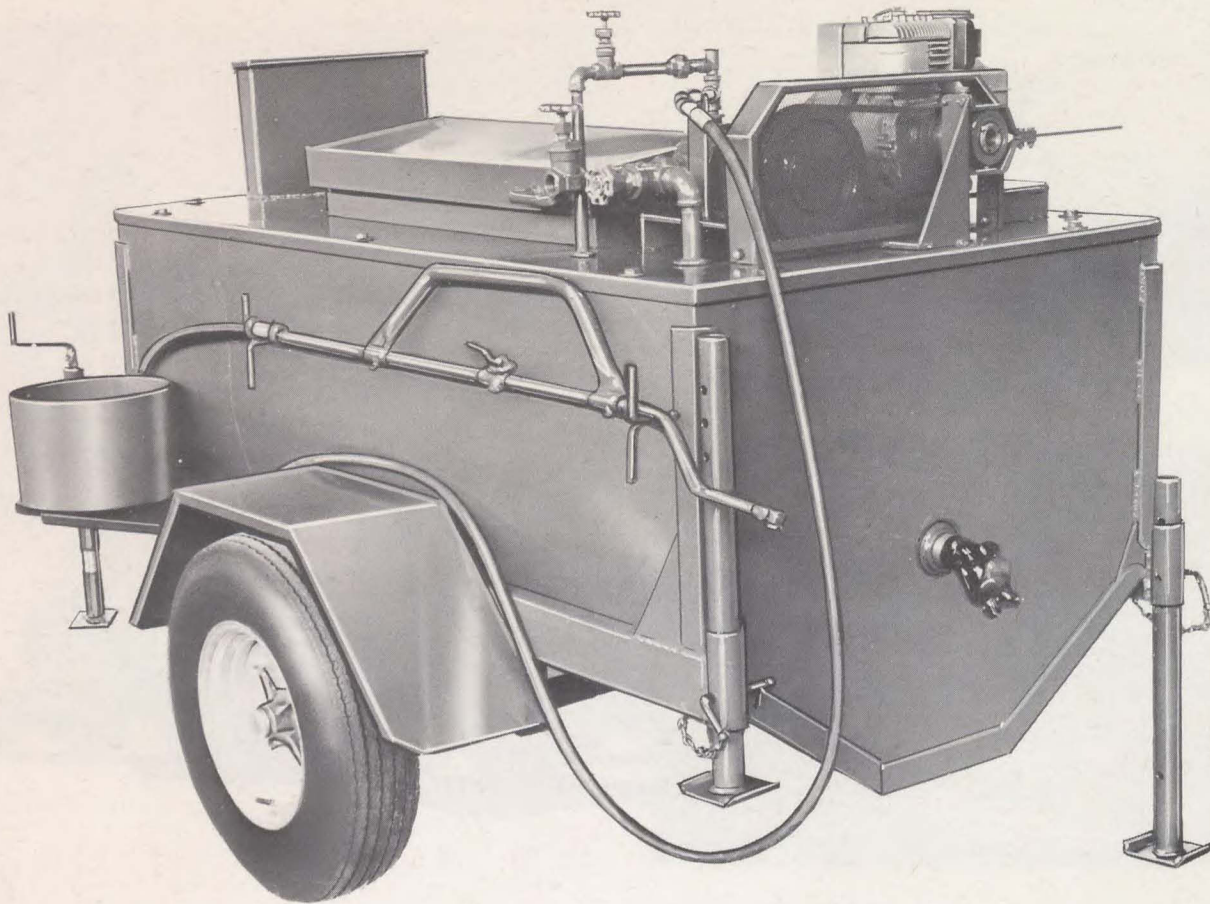
Mack's 14 cubic yard (11 m³) concrete mixer, Model DMM-6856EX, has a power front axle with 40,000 pounds (18,144 kg) capacity and rear axle with 44,000 pounds (19,958 kg) capacity. The engine is a 237 hp diesel and the transmission is six speed heavy duty.

The low bed float tractor, Model R795ST, has front and rear axle capacity of 12,000 and 44,000 pounds (5,433 and 19,958 kg) respectively, with a 325 hp diesel engine and six speed

heavy-duty transmission.

End dumper Model DM607S has a 180 hp diesel engine and 20 speed transmission. Front and rear axle capacity is 12,000 and 38,000 pounds (5,433 and 17,237 kg).

Complementing Mack diesels with engines ranging from 180 to 434 hp is a wide range of Mack transmissions of various capacities designed for smooth operation, easy handling and long life. A broad selection of toughly built front axles rated at 12,000 to 25,000 pounds (5,443 to 11,340 kg) are also available. Balanced design tandem bodies can be furnished, ranging from 34,000 to 100,000 pounds (15,454 to 45,454 kg) capacity.



Fast and economical first aid for road surfaces from Marathon.

MARATHON EQUIPMENT LTD.

88 Signet Drive, Weston, Ontario, Canada

Tel: (416) 749-2811 • Telex: 06-965840

Dangerous and unsightly holes in a road surface demand instant attention. They get it economically and fast with Marathon Equipment Ltd. portable road maintenance kettles. This road patching equipment can be towed to several locations in one day if required to supply hot asphalt where and when it's needed.

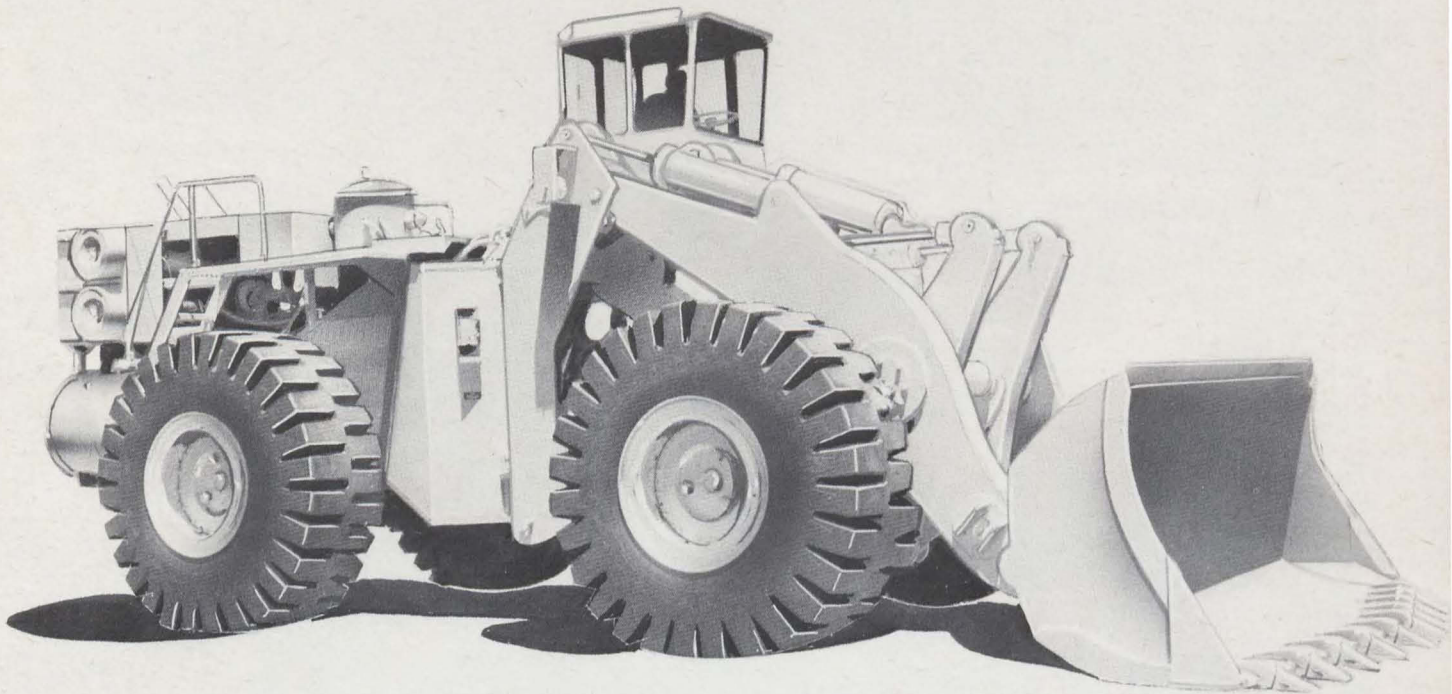
The fully insulated vat is bottom-fired for efficient heating and the unit is mounted on a rugged steel channel frame with single-axle and truck-type springs, axle and tires. It is available with either oil or propane burners, manual or gas engine-driven pump with hose and hand spray, or with fast-acting draincock only.

Marathon's kettle has a capacity of 175 Imperial gallons (791

liters) and is 157 inches long by 68 inches wide (350 by 173 cm), with a loading height of 49 inches (110 cm) and a shipping weight of 1,567 pounds (709 kg). The heavy steel inner vat has a rounded bottom for easy cleaning. Other features include a folding crank jack leg, single torch-type burner, heat baffle for even heating and vat protection, leaf spring suspension.

Propane units are equipped with two cylinder holders, hose regulator and burner. Oil-fired units have a 22 Imperial gallon (100 liter) fuel tank, a hand pump, pressure gauge, hose and burner.

Marathon also produces roofers' kettles, sheet metal brakes, and high pressure industrial washers.



Dart loaders combine increased production with lower operating costs.

SICARD INC.

P.O. Box 600, Sicard Street, Ste-Thérèse, Quebec, Canada

Tel: (514) 435-6171 • Telex: 018-3715 • TWX: 610-422-4031 • Cable: SICARIN

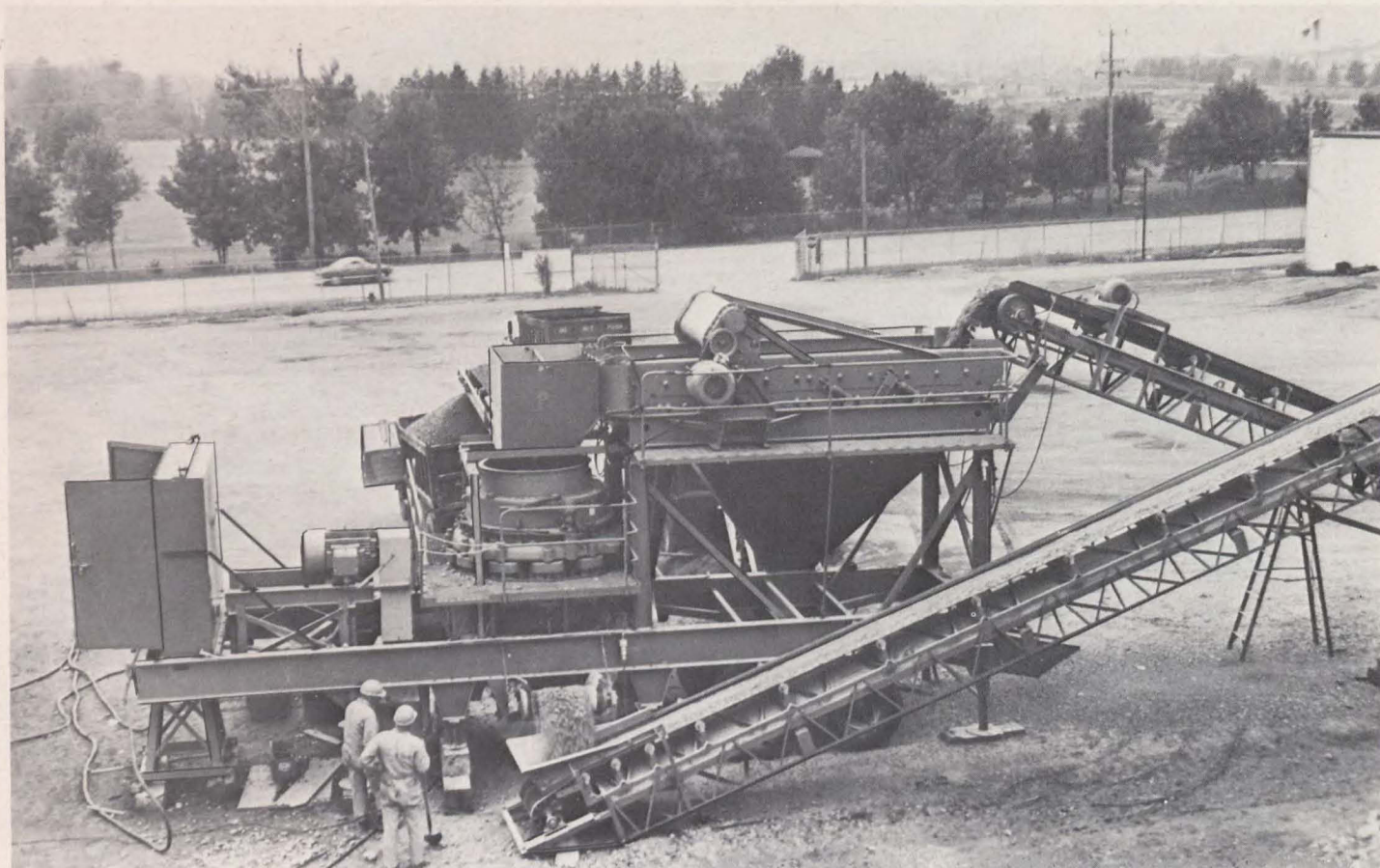
For 70 years, the manufacturers of Dart trucks have been talking to the industries they serve and custom designing equipment to meet special needs. In Canada, Sicard Inc., a sister division of the Dart Truck Company, undertakes the manufacture and marketing of the Dart front end loader and logstacker.

Its custom-design approach permits Dart to offer a choice of several different diesel engines, power shift transmissions, tires, bucket sizes, engine horsepower, ancillary equipment and power train exchange modules.

The D-600 B series front loaders in the 30,000 pound (13,608 kg) and over class can bite off a 22½-ton (20,412 kg) payload of hard or soft material and lift it 21½ feet (6.5 m) in 10

seconds. Buckets are available in sizes from 10 to 26 cubic yards (7.6 to 19.8 m³). The loader can articulate at a 42-degree angle and put a 45,000-pound (20,412 kg) payload anywhere it is wanted. The D-600 B will move a full bucket load quickly from job to job at speeds of up to 20 mph (34.4 km/h). Trucks can be heaped as high as 21 feet (6 m) and so can stockpiles.

Dart logstackers are available in either 80,000 pound (36,281 kg) or 120,000 pound (54,422 kg) capacities. These stackers can lift their rated payload to a height of 20 feet (6.1 m) in 25 seconds. Travel speeds either forward or reverse are in excess of 20 mph (34.4 km/h). The log-handling head provides for a tilt of 20 degrees forward and 15 degrees backward with the load secured under twin clamps. Standard kick-off attachment unloads forks under all conditions of tilt.



Suntract portable crushing plants speed up production of construction aggregates.

SUNTRACT MANUFACTURING LIMITED

10 Suntract Road, Weston 491, Ontario, Canada
Tel: (416) 244-2531 • Telex: 06-22227

The ideal machine for the contractor who likes to move into a job, finish it in record time and move on to the next project is the portable crushing plant produced by Suntract Manufacturing Limited. The heart of the plant is the world famous Nordberg Symons cone crusher in either the 4½ foot (1.37 m) or 5½ foot (1.67 m) size for fine or coarse crushing of rock and gravel for the production of construction aggregates.

It also contains the Cedarapids 5 by 14 foot (1.52 by 4.27 m) double deck horizontal screen with supports that can be lowered and raised by hydraulic power. A travel height of 13 feet 9 inches (4.2 m) is possible with the screen in a lowered position.

The plant is equipped with electric motor drives and is fully wired. Feed and return conveyors are available for closed-cir-

cuit operation, as well as two plant-mounted product conveyors. Running gear has a tandem rear axle, fifth wheel pin and air brakes. Power is normally drawn from a public utility source. If necessary it can be provided by a diesel generator set of suitable size. Various combinations of voltage and frequency can be supplied to meet local conditions.

The unit may be operated as a single pass plant or can be converted to a closed-circuit configuration with the addition of a return conveyor. It comes complete with access stairs and catwalks around the cone crusher and screen, and jacking and cribbing supports under the main frame.

Other Suntract products include portable screening plants and portable air compressors.



Balanced design of the Thomas S/S Loader makes for smooth running in any situation.

THOMAS EQUIPMENT LTD.

Centreville, New Brunswick, Canada

Tel: (506) 392-5541 • Telex: 014-27553 • Cable: THOMAS CENTREVILLE

Here's a front end loader with capacities of 1,200, 1,700 or 2,250 pounds (541, 768 or 1,014 kg) that can do the job with something to spare. Because of its balanced design, the Thomas S/S Loader picks up, lifts and runs smoothly in any situation.

Every model manufactured by Thomas Equipment Ltd. has hydrostatic four-wheel drive to give infinitely variable speed control and positive traction without clutches, belts or a lot of downtime and maintenance problems. Operation is by two hand levers and two foot pedals to make the going easy. These compactly designed machines turn in their own tracks.

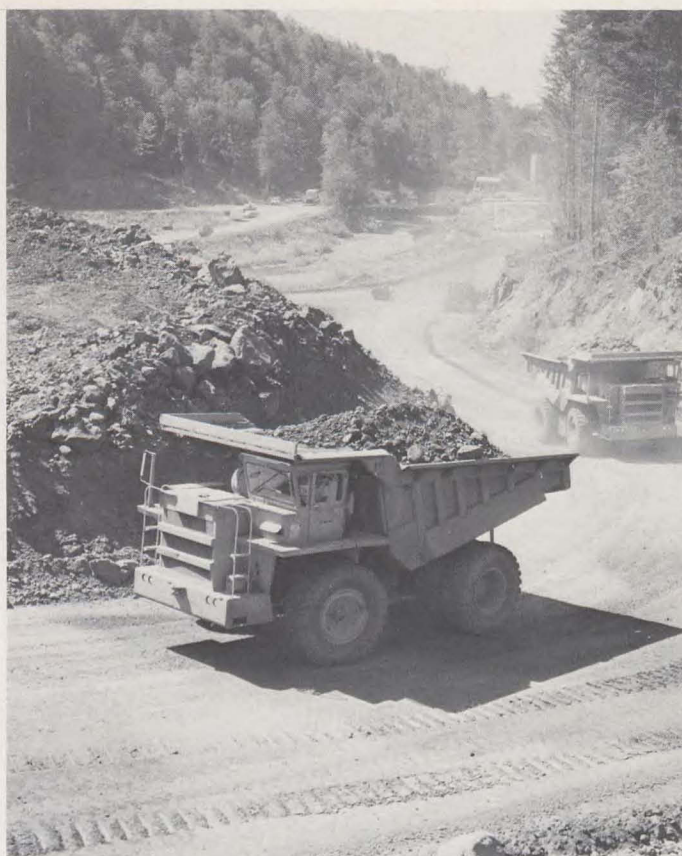
Rugged construction shrugs off the tough daily grind. All

Thomas S/S Loaders have these features: load compensating drive system; easy maintenance and operation; pick up, lift and run capability; quick-change attachments — for versatility; extra safety features.

Nine kinds of buckets are available — dirt, dirt with teeth, cement, fertilizer, potato, utility, mining, litter, snow. They range in size from 12 to 26.5 cubic feet (0.34 to 0.75 m³). Other attachments are standard utility forks, industrial grapple forks, scarifiers, backhoes, angle dozer blades, post hole augers, rotary and sickle bar mowers, pallet forks, drum lifts, log and pulpwood grapples, V-snow blades, angle brooms, pickup sweepers, snow blowers, fork lifts, draw bars, overhead guards, enclosed cabs and small accessories.



Wabco motor graders are high on quality, low on maintenance costs.
Haulpak trucks are designed for maximum strength and maneuverability.



WABCO EQUIPMENT OF CANADA ***DIVISION OF WABCO STANDARD LIMITED***

P.O. Box 38, Adams Avenue, Paris, Ontario, Canada
Tel: (519) 442-4434 • Telex: 021-81156

High quality and low maintenance costs put Wabco motor graders ahead of the field in dependability, performance and durability. The five models produced by Wabco Equipment of Canada provide a range of from 125 to 230 hp. Smooth, accurate blading assists the operator to perform better, with the help of Wabco's world-tested hydraulic-over-mechanical double locking control system.

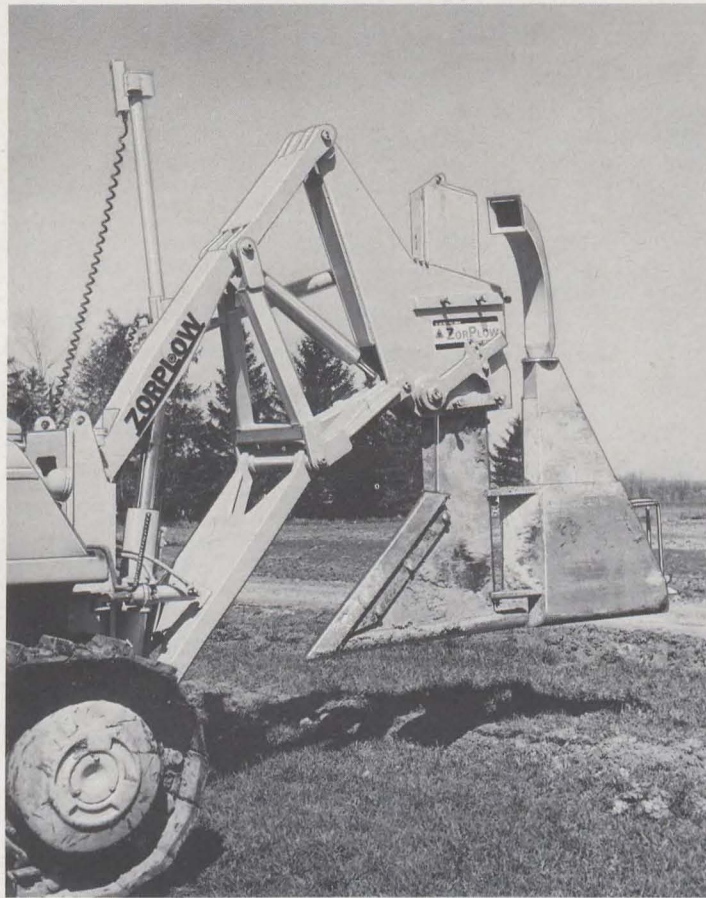
Superior performance from General Motors or Cummins diesel engines insures no-stall lugging ability in the toughest conditions. The low-silhouette, high clearance Wabco frame ensures stability in slope or ditching applications. The grader is equipped with tough anti-friction bearings throughout the drive train, a rugged heavy-duty front axle and a massive 63-inch (160-m) circle.

Attachments available are scarifiers, ripper-scarifiers, snow wings and plows, push plates and dozer blades. Other optional extras include cab, headlights, hourmeter, odometer, heater, windshield wiper, adjustable defroster fan, hood sides, radiator shutter, mold-board extensions, blade end bits, tire pump,

front "steering gear" cover plate.

Wabco also produces the 35 and 50-ton rear dump Haulpak truck for tough tasks. Its frame is a box-section design with all-welded construction that, combined with an integral front bumper and tubular cross members, yields the greatest possible strength in bending and torsion per pound. The company offers a wide range of easily serviced engines to meet the customer's specific requirements.

The power shift transmission has six speeds plus two ranges in each gear and a retarding brake for safe downhill hauling. Standard equipment on the Haulpak is Wabco's proven, simple bull gear and pinion-type final drive with power transfer differential. The longer life V-body design now has a new stronger channel construction. Emergency steering is standard equipment, and brakes have a dual safety system. Outstanding maneuverability permits the truck to spot, swing around, back up and pull away from a loader or shovel without lost motion, even in the tightest loading situations. The front wheels turn a complete 45 degrees.



The ZorPlow can lay as much as five miles of plastic pipe a day.

ZOR INDUSTRIES LIMITED

P.O. Box 844, Woodstock, Ontario, Canada

Tel: (519) 537-6246 • Telex: 024-74136

ZorPlow, with its partner plastic pipe, has revolutionized the installation of underdrainage systems. The Zor Industries Limited plow-in technique has many advantages over the open trenching method, not the least of which is 10 to 20 per cent lower laid down costs.

When pipe is plowed-in with the ZorPlow, soil pressure stays even all around the pipe and there is no backfilling — only a pressing back of the sides of the slit. The pipe cannot move because it is cradled at the bottom of the slit. Topsoil and lower layers are practically undisturbed; stones move sideways rather than vertically and stay buried. There is no detectable settling of silt, sub-soils are not brought to the surface and surface damage is minimal. And the job can be completed in one to two days.

Clean, simple design has produced a strong unit at modest production cost. There are no shear pins: ZorPlow is guaranteed to stop the tractor if it encounters a buried foundation or large boulder when pulled by a prime mover of up to 100,000 pounds (45,359 kg) draw bar pull. Pressure-lubricated bearings permit smooth joint movements and tough alloy steels permit the ploy to operate as deep as 72 inches (183 cm).

The unit offers a most stable mechanism for grade control options such as laser beam or radio control and level. Staking systems have proved impractical because of plow speeds. The pulling power of a D8 crawler (or equivalent) is required for deep laying.

Who Makes What

AIR COMPRESSORS — PORTABLE

- *Canadian Ingersoll-Rand Company Limited
- *Gardner-Denver Company (Canada) Limited
- Jaeger Machine Company of Canada Ltd.
- Joy Manufacturing Company (Canada) Limited
- Worthington Construction Equipment Ltd.

ALL TERRAIN VEHICLES — TRACKED

- *Bombardier Ltd. (Industrial Division)
- Flextrac Nodwell Ltd.
- *Foremost International Industries Ltd.

ASPHALT PAVING MACHINES

- *Allatt Limited
- *Barber-Greene Canada Ltd.

ASPHALT KETTLES

- Maple Leaf Metal Products Limited
- *Marathon Equipment Ltd.

ASPHALT PLANTS

- *Barber-Greene Canada Ltd.
- King Seagrave Limited
- Maple Leaf Metal Products Limited

ASPHALT PRESSURE DISTRIBUTORS

- EGW Limited
- Westank Industries Ltd.
- Willock Truck Equipment Co. Ltd.

ASPHALT SPREADER — TAIL GATE TYPE

- Pavemaster of Canada Ltd.

BLADES — BULLDOZER, GRADER, SNOW

- Alberta Tractor Parts Limited
- Bucyrus Blades of Canada Ltd.
- Craig's Machine Shop Limited
- Harricana Metal Inc.
- Letco Limited
- McCormack Blades Ltd.
- Valley Blades Ltd.
- Weldco Ltd.

BUCKETS — DRAGLINE, CLAMSHELL, SHOVEL, SPECIAL

- *Esco Limited
- Sorel Steel Foundries Limited
- Weldco Ltd.

CONCRETE BUCKETS

- Aerometals Limited
- Milmar Magnesium Equipment Company

CONCRETE PUMPS

- Jaeger Machine Company of Canada Ltd.

CONCRETE TRUCK MIXERS

- Jaeger Machine Company of Canada Ltd.
- London Concrete Machinery Division,
- Hodgson Machine & Equipment Ltd.
- *Mack Trucks Canada Limited
- The Welding & Engineering Company

CRUSHING PLANTS — PORTABLE

- *Barber-Greene (Canada) Ltd.
- *Forano Limited
- *Hewitt-Robins (Canada) Limited
- *Suntract Manufacturing Limited

CRANES — POWER SHOVELS

- *FMC of Canada, Ltd., Link-Belt Speeder Division

CRANES — MOBILE

- Dahmer Steel Limited
- Skagit Equipment Ltd.
- Truck Engineering Ltd.

CRANES — TRUCK MOUNTED

- King Seagrave Limited
- Smith Bros. Motor Bodies Limited
- Truck Engineering Ltd.

CRANES — CLIMBING

- Anthes Equipment Ltd.
- *Heede International, Ltd.
- Talisman Contracting & Equipment Limited

CRANES — CARRIERS FOR UPPERWORKS

- American Hoist of Canada Limited
- *Consolidated Dynamics Limited
- Crane Carrier Canada Limited

DITCHERS AND TRENCHERS

- *Zor Industries Limited

DRILLS

- Becker Drills Limited
- *Canadian Ingersoll-Rand Company Limited
- Dux Machinery Corporation
- *Gardner-Denver Company (Canada) Limited
- Joy Manufacturing Company (Canada) Limited

EXCAVATORS — BACKHOES

- A. E. Joslin Machinery & Equipment Ltd.
- Koehring-Waterous Ltd.

GRADERS — MOTOR

- *Caterpillar of Canada Ltd.
- *The Dominion Road Machinery Company Limited
- *Wabco Equipment of Canada

HEATERS

- Anthes Equipment Ltd.
- Engmark Limited

LOADERS — FRONT END

- Allis-Chalmers, Rumely, Ltd.
- *Caterpillar of Canada Ltd.
- *General Motors of Canada, Limited Diesel Division
- *Clark Equipment of Canada, Division of BLH Canada Ltd.
- *International Harvester Company of Canada, Limited
- *Sicard Inc.
- *Thomas Equipment Ltd.

PAVING BREAKER ACCESSORY TOOLS

- Brunner and Lay (Canada) Ltd.
- *Canadian Ingersoll-Rand Company Limited
- *Gardner-Denver Company (Canada) Limited
- Joy Manufacturing Company (Canada) Limited

ROLLERS AND COMPACTORS

- American Hoist of Canada Limited
- *Bomag (Canada) Limited
- *Canadian Ingersoll-Rand Company Limited
- *Frederick Parker (Canada) Limited
- Pavemaster of Canada Limited

TRACTORS — CRAWLER

- *International Harvester Company of Canada, Limited

TRAFFIC LINE MARKER

- Traffic Line Marking Equipment

TRAILERS — BOTTOM AND SIDE DUMP

- Atlas Hoist and Body Inc.
- Bedard Trailer and Body Limited
- *Sicard Inc.
- Truck Engineering Ltd.

TRAILERS — LOW BED

- Columbia Trailer Co. Ltd.
- Fruehauf Trailer Company of Canada Limited
- Highway Trailers of Canada Limited
- Pacific Truck and Trailer Ltd.
- Truck Engineering Ltd.

TRUCKS — OFF-HIGHWAY QUARRY TYPE

- *General Motors of Canada, Limited Diesel Division
- *Mack Trucks Canada Limited
- *Sicard Inc.
- Unit Rig and Equipment Co. (Canada) Ltd.
- *Wabco Equipment of Canada

*Denotes companies described in this booklet.

The Manufacturers

- Aerometals Limited**
1183 Finch Avenue West, Suite 406
Toronto, Ontario M3J 2G2, Canada
- Alberta Tractor Parts Limited**
6155 - 99th Street
Edmonton, Alberta, Canada
- *Allatt Limited**
1100 Finch Avenue West
Downsview, Ontario, Canada
- Allis-Chalmers, Rumely, Ltd.**
155 Dawson Road
Guelph, Ontario, Canada
- American Hoist of Canada Limited**
145 Heart Lake Road South
Brampton, Ontario, Canada
- Anthes Equipment Limited**
100 Dixie Plaza
Port Credit, Ontario, Canada
- Atlas Hoist and Body Inc.**
7600 Cote de Liesse Road
Montreal 376, Quebec, Canada
- *Barber-Greene Canada Ltd.**
401 Barber-Greene Road
Milton, Ontario, Canada
- Becker Drills Limited**
415 Monument Place Southeast
P.O. Box 3487, Postal Station "B"
Calgary 62, Alberta, Canada
- Bedard Trailer and Body Limited**
3700 - 3rd Avenue
Pointe-aux-Trembles
Montreal, Quebec, Canada
- *Bomag (Canada) Limited**
1300 Aerowood Drive
Mississauga, Ontario, Canada
- *Bombardier Ltd. (Industrial Division)**
Valcourt, Quebec, Canada
- Brunner and Lay (Canada) Ltd.**
2280 - 43rd Avenue
Lachine, Quebec, Canada
- Bucyrus Blades of Canada Ltd.**
119 East Drive
Bramalea, Ontario, Canada
- *Canadian Ingersoll-Rand Company Limited**
620 Cathcart Street
P.O. Box 610, Station "B"
Montreal 111, Quebec, Canada
- *Caterpillar of Canada Ltd.**
1550 Caterpillar Road
Mississauga, Ontario, Canada
- *Clark Equipment of Canada**
Division of BLH Canada Ltd.
Michigan Boulevard
St. Thomas, Ontario, Canada
- Columbia Trailer Co. Ltd.**
3625 Brighton Avenue
Burnaby 2, British Columbia, Canada
- *Consolidated Dynamics Limited**
8048 Woodbine Avenue
Buttonville, Ontario, Canada
- Craig's Machine Shop Limited**
P.O. Box 328
Hartland, New Brunswick, Canada
- Crane Carrier Canada Limited**
503 Carlingview Drive
Rexdale, Ontario, Canada
- Dahmer Steel Limited**
68 Shirley Avenue
Kitchener, Ontario, Canada
- *The Dominion Road Machinery Company Limited**
Maitland Road
Goderich, Ontario, Canada
- Dux Machinery Corporation**
621 Lavoisier
Repentigny, Quebec, Canada
- EGW Limited**
933 Simard
Chambly, Quebec, Canada
- Engmark Limited**
P.O. Box 5500
55 Idema Road
Don Mills, Ontario, Canada
- *Esco Limited**
1855 Kingsway
Port Coquitlam, British Columbia, Canada
- *FMC of Canada Ltd., Link-Belt Speeder Division**
Dundas Street East
P.O. Box 190
Woodstock, Ontario, Canada
- Flextrac Nodwell Ltd.**
1201 42nd Avenue Southwest
P.O. Box 5544, Station "A"
Calgary, Alberta, Canada
- *Forano Limited**
1600 St-Paul Street
Plessisville, Quebec, Canada
- *Foremost International Industries Ltd.**
1616 Meridian Road Northeast
Calgary, Alberta T2A 2P1, Canada
- *Frederick Parker (Canada) Limited**
441 Ellesmere Road
Scarborough, Ontario, Canada
- Fruehauf Trailer Company of Canada Limited**
P.O. Box 20
2450 Stanfield Road
Mississauga, Ontario, Canada
- *Gardner-Denver Company (Canada) Limited**
1800 Ellesmere Road
Scarborough, Ontario, Canada
- *General Motors of Canada Limited**
Diesel Division
P.O. Box 5160
London 12, Ontario, Canada
- Harricana Metal Inc.**
351 1st Avenue East
Amos, Abitibi, Quebec, Canada
- *Heede International, Ltd.**
3140 St. John's Street
Port Moody, British Columbia, Canada
- *Hewitt-Robins (Canada) Limited**
750 LeBeau Boulevard
St. Laurent
Montreal 379, Quebec, Canada
- Highway Trailers of Canada Limited**
3280 Wharton Way
Mississauga, Ontario, Canada
- *International Harvester Company of Canada, Limited**
208 Hillyard Street
Hamilton, Ontario, Canada
- Jaeger Machine Co. of Canada Ltd.**
43 Gaylord Road
St. Thomas, Ontario, Canada
- A. E. Joslin Machinery & Equipment Ltd.**
2575 Haines Road
Cooksville, Ontario, Canada
- Joy Manufacturing Company (Canada) Limited**
P.O. Box 3143, Station "C"
Ottawa, Ontario, Canada
- King Seagrave Ltd.**
873 Devonshire Avenue
Woodstock, Ontario, Canada
- Koehring-Waterous Ltd.**
South Market Street
Brantford, Ontario, Canada
- Letco Limited**
1212 Bishop Street North
Preston, Ontario, Canada
- London Concrete Machinery Division**
Hodgson Machine and Equipment Ltd.
P.O. Box 2605
London, Ontario, Canada
- *Mack Trucks Canada Limited**
1350 The Queensway
Toronto 18, Ontario, Canada
- Maple Leaf Metal Products Limited**
2531 McDougall Street
Windsor, Ontario, Canada
- *Marathon Equipment Ltd.**
88 Signet Drive
Weston, Ontario, Canada
- McCormack Blades Ltd.**
Harbour Street
Whitby, Ontario, Canada
- Milmar Magnesium Equipment Company**
20 Toronto Street
Toronto 1, Ontario, Canada
- Pacific Truck and Trailer Ltd.**
935 W. 3rd Street
North Vancouver, British Columbia, Canada
- Pavemaster of Canada Ltd.**
R.R. No. 2
Markham, Ontario, Canada
- *Sicard Inc.**
P.O. Box 600
Sicard Street
Ste-Thérèse, Quebec, Canada

Skagit Equipment Ltd.
20333 Logan Avenue
Langley, British Columbia, Canada

Smith Bros. Motor Bodies Ltd.
7400 Woodbine Avenue
Markham, Ontario, Canada

Sorel Steel Foundries Limited
1405 Peel Street, Suite 402
Montreal 110, Quebec, Canada

***Suntract Manufacturing Limited**
10 Suntract Road
Weston 491, Ontario, Canada

Talisman Contracting and Equipment Ltd.
58 Racine Road
Rexdale, Ontario, Canada

***Thomas Equipment Ltd.**
Centreville, New Brunswick, Canada

Traffic Line Marking Equipment
704 Aberdeen Street
Regina, Saskatchewan, Canada

Truck Engineering Ltd.
165 Wellington Street South
Woodstock, Ontario, Canada

Unit Rig and Equipment Co. (Canada) Ltd.
4300 Stanley Avenue
Niagara Falls, Ontario, Canada

Valley Blades Limited
19 Concession Street
Galt, Ontario, Canada

***Wabco Equipment of Canada**
P.O. Box 38
Adams Avenue
Paris, Ontario, Canada

Weldco Ltd.
116 East 2nd Avenue
Vancouver 4, British Columbia, Canada

The Welding & Engineering
1600 Main Street
Vancouver 4, British Columbia, Canada

Westank Industries Ltd.
1100 Scarth Street
Regina, Saskatchewan, Canada

Willock Truck Equipment Co. Ltd.
205 West 2nd Avenue
Vancouver 10, British Columbia, Canada

Worthington Construction Equipment Ltd.
1505 Dickson Street
Montreal 426, Quebec, Canada

***Zor Industries Limited**
P.O. Box 844
Woodstock, Ontario, Canada

***Denotes companies described in this booklet.**

TH900/.C3

Canada. Dept. of Industry,
Canadian construction
equipment.

AMEH c. 1 aa ISTC

DATE DUE - DATE DE RETOUR

[illegible]

ISTC 1551 (8/88)

INDUSTRY CANADA/INDUSTRIE CANADA

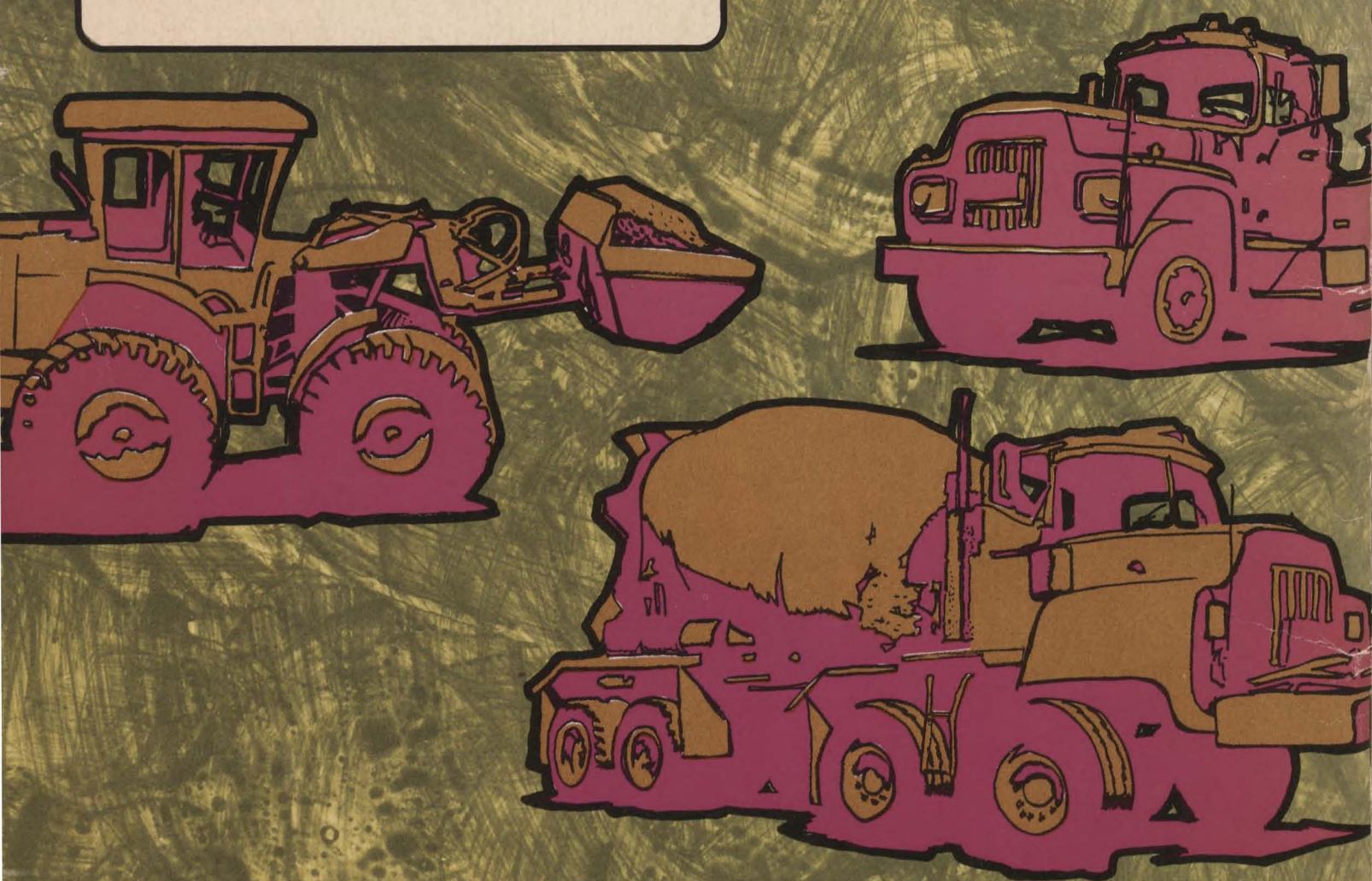


63284

For further information on Canada's construction equipment industry,
write to:

**Secondary Industries Division
Machinery Branch
Department of Industry, Trade and Commerce
112 Kent Street
Ottawa, Ontario K1A 0H5
Canada**

or contact the nearest Canadian trade office.



Published by the Department of Industry, Trade and Commerce, Ottawa, Canada
in co-operation with the participating companies.

Publié par le ministère de l'Industrie et du Commerce, Ottawa, Canada
en collaboration avec les sociétés participantes.

Information Canada
Ottawa, 1973

(aussi édité en français)