

NATIONAL HISTORIC SITES SERVICE

MANUSCRIPT REPORT NUMBER 6

NOTES, ILLUSTRATIONS AND PLANS FOR THE
PARTIAL RESTORATION OF THE 1755 BRITISH ENTRANCE TO
FORT BEAUSEJOUR

by

A. E. Wilson

December 1969

NATIONAL AND HISTORIC PARKS BRANCH

DEPARTMENT OF INDIAN AFFAIRS AND NORTHERN DEVELOPMENT

NOTES, ILLUSTRATIONS AND PLANS
FOR THE
PARTIAL RESTORATION
OF THE
1755 BRITISH ENTRANCE
TO
FORT BEAUSEJOUR

ARCHAEOLOGICAL OPERATION 2E26

December, 1969.

A.E. Wilson

IAND Publication No: QS-2062-000-EE-A-11

TABLE OF CONTENTS

Survey Data	1
Layout	1
Masonry Character	1
Grades	2
Reconstruction Details	
Stone Drain and Revetment	2
Entrance Walls	2
Sills	3
Entrance Walk	3

ILLUSTRATIONS

Figs. 1-16	Photographs of the structure as found, (see Fig. 20 for key to photographs).
Fig. 17	Archaeological plan of structure as found. DWG. NO. 2E-68-102-12
Fig. 18	Elevation of south wall as found DWG. NO. 2E-68-102-37
Fig. 19	Elevation of east end of south wall as found. DWG. NO. 2E-68-102-38
Fig. 20	Dimensions for reconstruction, Drawing 1. DWG. NO. 2E-69-104-7A
Fig. 21	Dimensions for reconstruction, Drawing 2. DWG. NO. 2E-69-104-7B

(Figs. 20 and 21 are in an envelope at the back of the report).

Survey Data

All elevations shown in the drawings are to mean sea level datum. The bench mark for this datum is the top of the north-east corner of the concrete platform for the large cannon near the centre of the circular paved driveway between the fort and the museum building, elevation 116.90'.

Structure 2E26 is not tied into the survey grid established for the development works. I assume that this will be done by a survey crew from the Eastern Region office; the masonry as found is virtually complete at elevation 123.2', and it should be feasible to locate all the corners shown on the plan view (Drawing 1).

Layout

The plan layout of structure 2E26 is given in drawing 1 by perpendicular offsets from, and dimensions rectilinear to, an arbitrary baseline. This baseline is not marked on the site, and serves only as a device for drawing the layout to scale.

Masonry Character

The sizes and shapes of the stones of the entrance structure are illustrated in the archaeological drawings and in the photographic figures. In general, construction comprises a facade of worked stones and a rubble core.

All mortar used in the reconstruction is to be unobtrusive in colour and texture.

Grades

The drawings show a grade for the entrance-way of 123.2', approximately that of the stone sills found in situ. From the west or inner ends of the gate recesses the grade will rise to meet the parade square at about elevation 124.5'.

If the entrance walls are reconstructed to the elevations shown in the drawings, only minor departures from the pre-excavation grades of the adjacent earth works should be necessary.

RECONSTRUCTION DETAILS

Stone Drain and Revetment

The remains of the stone drain and of the revetment along the base of the outer face of the curtain wall, shown in the archaeological plan, are not to be included in the work. These features are below the design entrance grade, and will be back-filled.

Entrance Walls

The main walls of the entrance-way are to be reconstructed to the elevations shown in Drawing 2, and on the plan dimensions and layout given in Drawing 1. These features are essentially mirror images in plan, with the exception of the shallow set back of the west 6.5 feet of the north wall.

There is no evidence or information on the original heights of these walls, and the top surfaces should be made sufficiently irregular to simulate a partially dismantled structure.

The outer wings of the entrance walls, east of the gate posts, are to be stepped down as indicated in the elevation views to just above the entrance grade.

At the parade square end of the entrance, the walls turn along the base of the earth-works. The northward wall is to be reconstructed to the length as found; reconstruction of the southward wall is to be terminated, with a single step down, at the indicated distance from the corner, which is approximately the limit of excavations.

Sills

The gate sills in the recesses and the single sill stone with bolt holes on the centreline of the entrance-way are to be left in situ or replaced as found subsequent to the reconstruction of the walls.

Entrance Walk

There is no archaeological evidence for a regular surfacing of the entrance-way, although there is some indication of an original rough cobbling with brick-bats and broken stones.

To provide good contrast with the masonry remains, the best choice of cover would be grass. However, since this route will eventually carry all traffic into the fort, a more durable surface will be essential.

We suggest a centre walk-way with borders of grass along the walls and sills; this walk-way could be gravel, or an attempt could be made to simulate the remains of rough cobbling.

FIG. 1

NEG. NO. 2E-3414-X

FIG. 2

NEG. NO. 2E-3361-X



FIG. 3

NEG. NO. 2E-3362-X

FIG. 4

NEG. NO. 2E-3363-X



FIG. 5

NEG. NO. 2E-103-M

FIG. 6

NEG. NO. 2E-3364-X



FIG. 7

NEG. NO. 2E-3344-X

FIG. 8

NEG. NO. 2E-3345-X

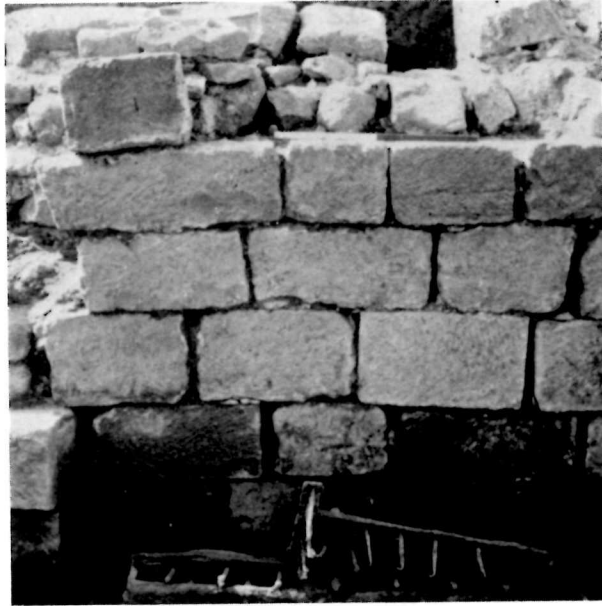


FIG. 9

NEG. NO. 2E-3346-X

FIG. 10

NEG. NO. 2E-3347-X



FIG. 11

NEG. NO. 2E-3350-X

FIG. 12

NEG. NO. 2E-3351-X

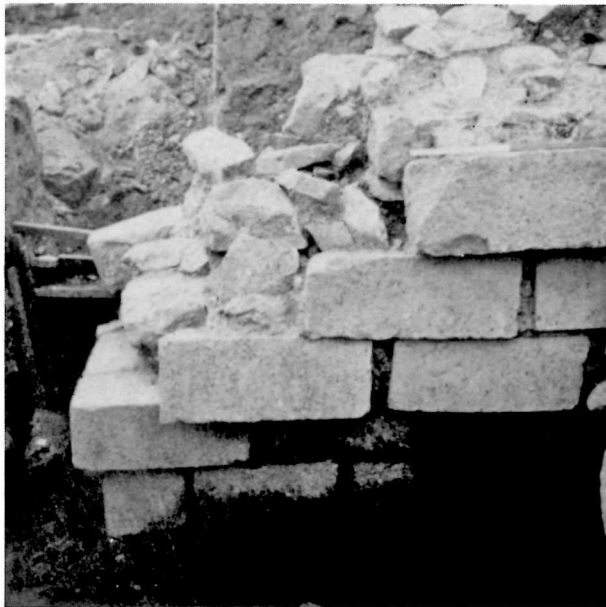


FIG. 13

NEG. NO. 2E-133-M

FIG. 14

NEG. NO. 2E-134-M

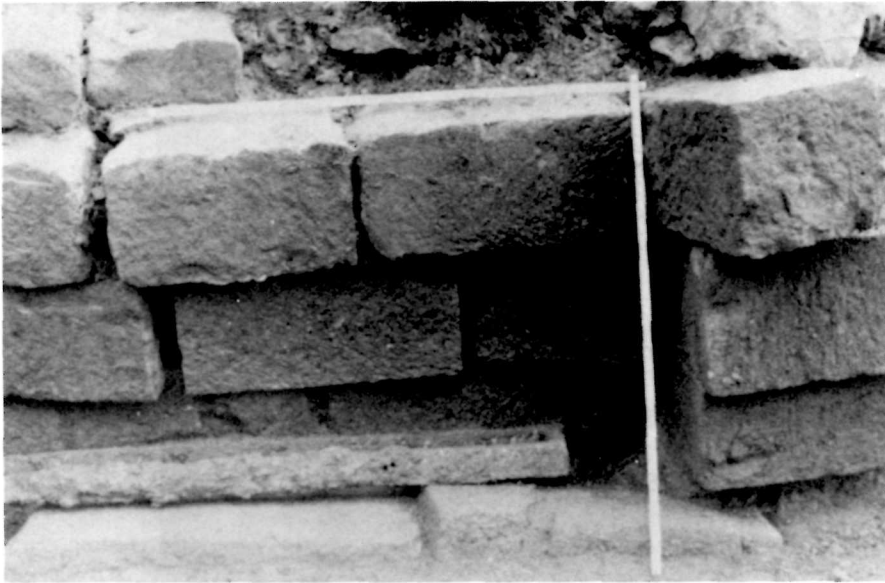
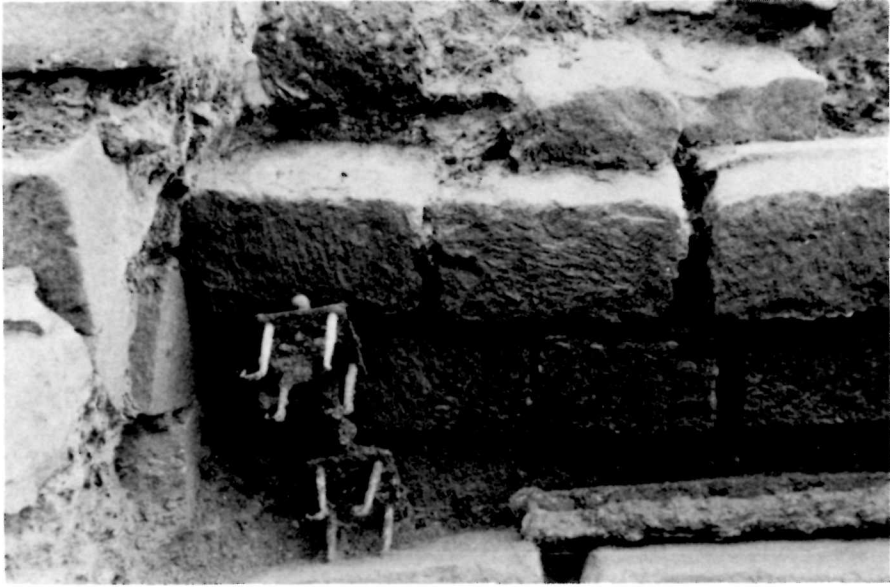


FIG. 15

NEG. NO. 2E-127-M

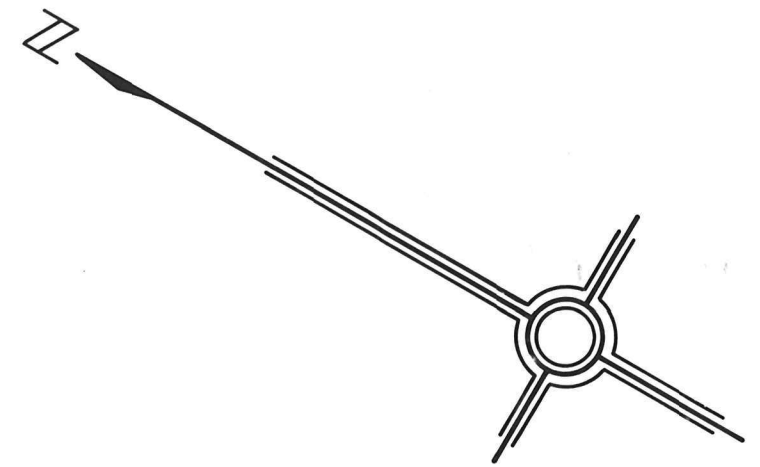
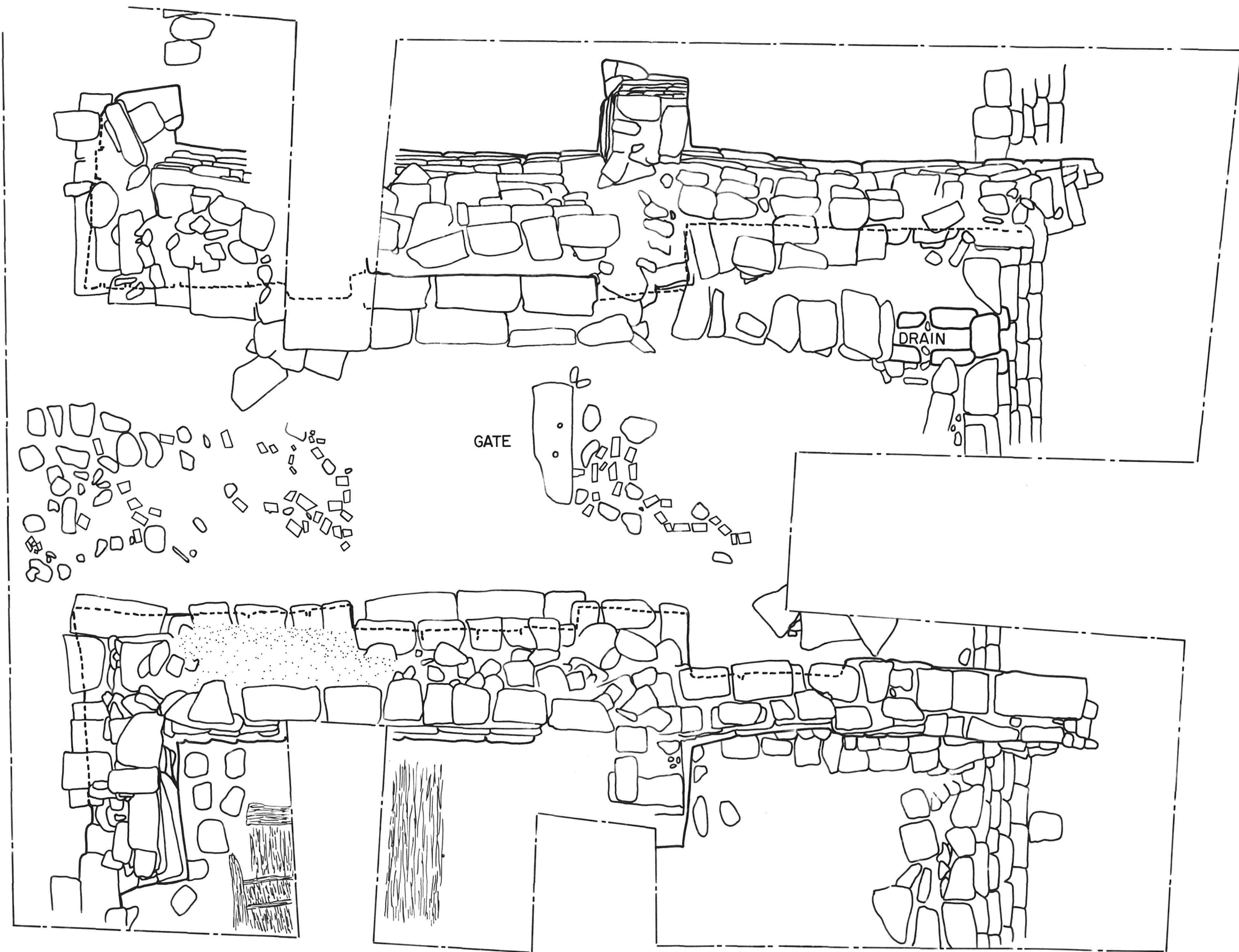
FIG. 16

NEG. NO. 2E-135-M



FIG. No. 17

2E 68 102 12



FORT BEAUSEJOUR N.B. SITE 2E

1755 BRITISH ENTRANCE

OPERATION 2E26

0 1 2 4 6 8 10 FT.



LEGEND

○ STONE

▢ BRICK

▨ WOOD

----- BASE OF WALL

----- EXCAVATION LIMIT

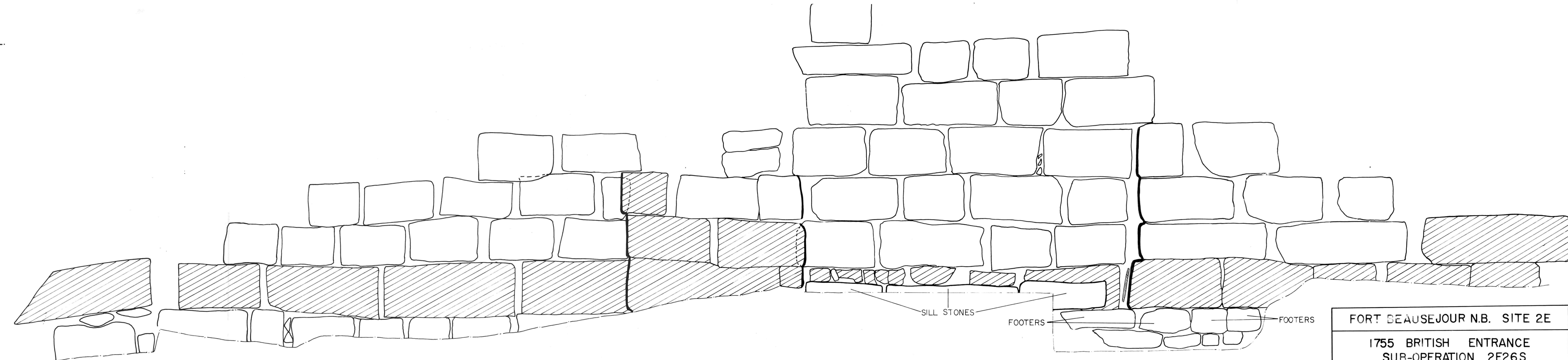
GATE: SEE DWG.
2E-68-102-13

FIG. No. 18

2E 68 102 37

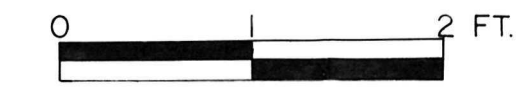
-128.00' A.S.L.
 -127.00'
 -126.00'
 -125.00'
 -124.00'
 -123.00'
 -122.00'
 -121.00'

-128.00' A.S.L.
 -127.00'
 -126.00'
 -125.00'
 -124.00'
 -123.00'
 -122.00'
 -121.00'



SILL STONES FOOTERS FOOTERS

FORT BEAUSEJOUR N.B. SITE 2E
1755 BRITISH ENTRANCE SUB-OPERATION 2E26S
ELEVATION VIEW OF SOUTH WALL



LEGEND	
FINELY CUT STONE	CUT STONE
EXCAVATION LIMIT	SLATE
HIDDEN FEATURE	

FIG. No. 19

2E 68 102 38

- 130.00' A.S.L.

- 130.00' A.S.L.

- 129.00'

- 12900'

- 128.00'

- 12800'

- 127.00'

- 127.00'

- 126.00'

- 126.00'

- 125.00'

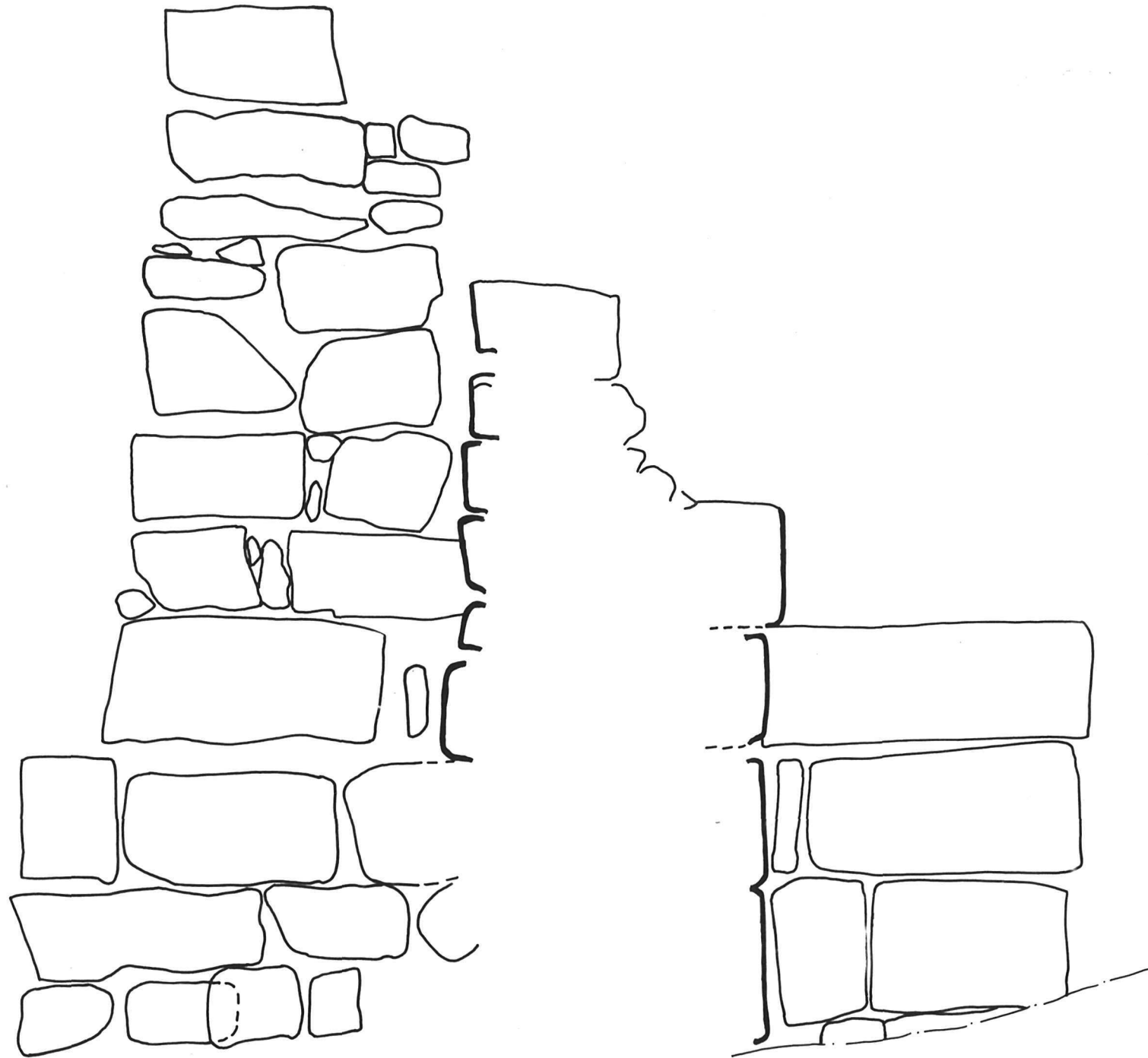
- 125.00'

- 124.00'

- 124.00'

- 123.00'

- 123.00'



FORT BEAUSEJOUR N.B. SITE 2E

ELEVATION VIEW OF SOUTH WALL
EAST END LOOKING WEST

1755 BRITISH ENTRANCE
SUB-OPERATION 2E26 S

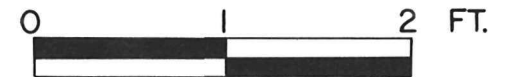
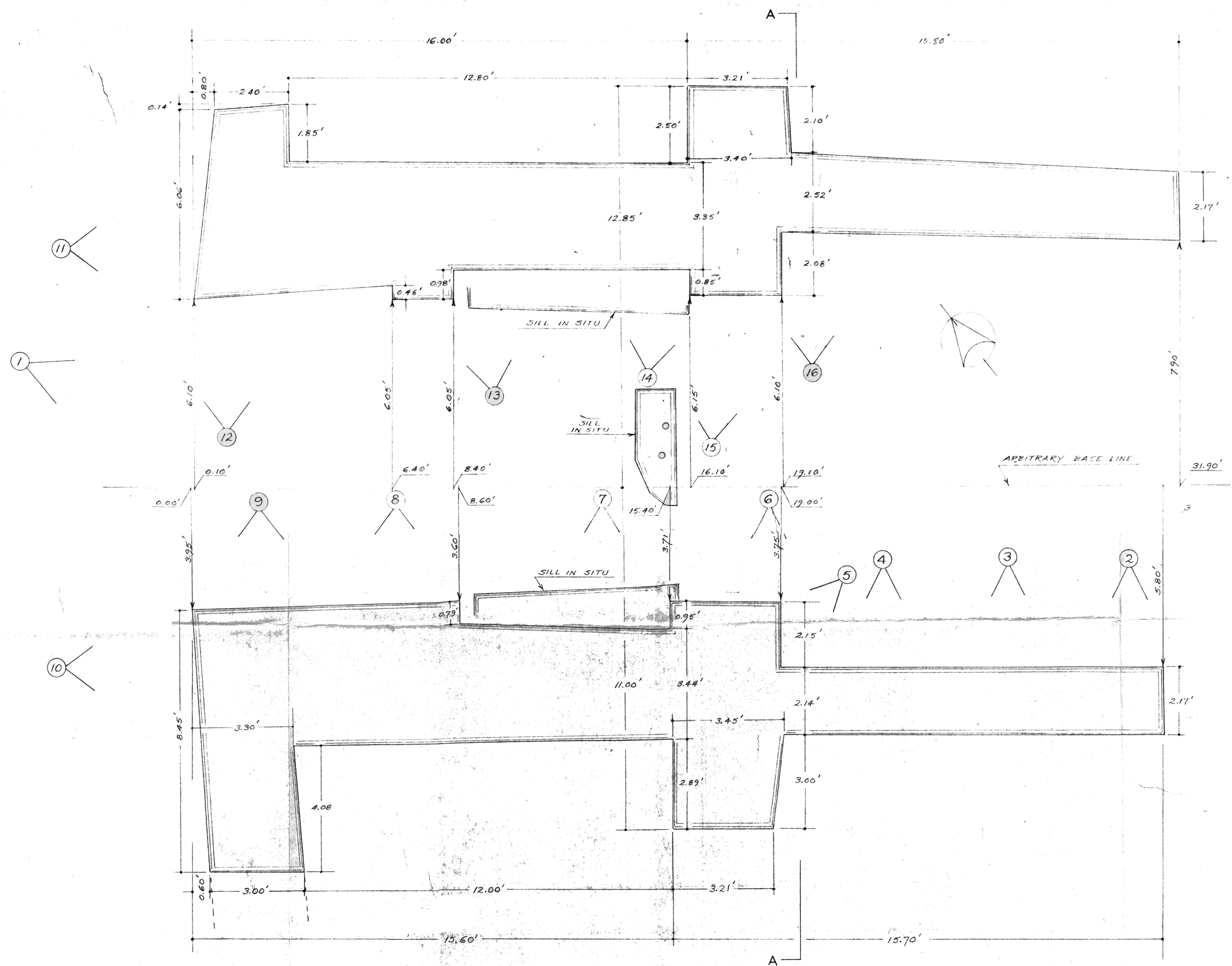


FIG. No. 20

2E 69 104 7 A




 - SYMBOL GIVES PHOTO. NO. AND APPROXIMATE FIELD OF VIEW.

PLAN DIMENSIONS

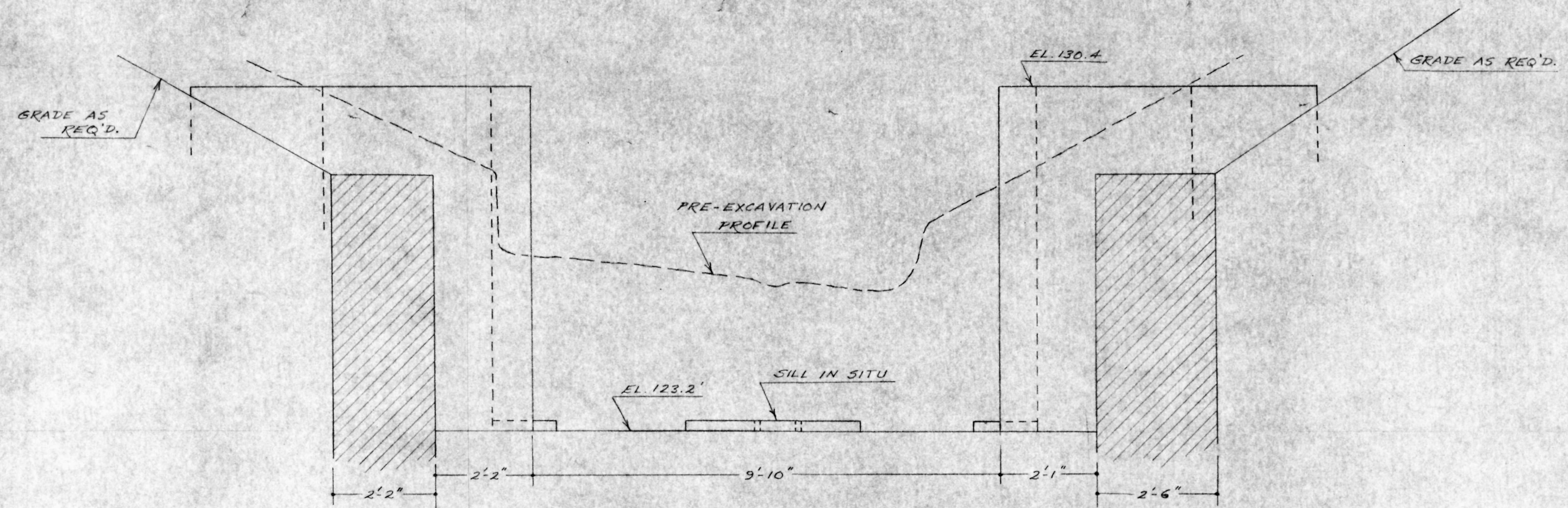
ALL DIMENSIONS ARE MEASURED PERPENDICULAR OR PARALLEL TO THE BASE LINE, AND REPRESENT A HORIZONTAL SECTION TAKEN AT ELEVATION 123.2' ±

N.H.S.S.
 FORT BEAUSEJOUR OPERATION 2E26
 1755 BRITISH ENTRANCE
 DIMENSIONS FOR RECONSTRUCTION

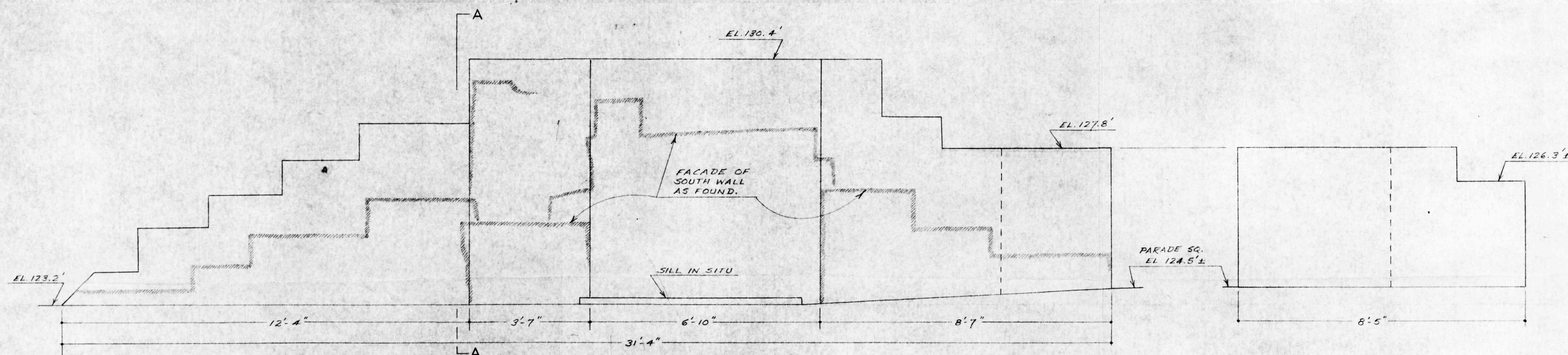
A.E.W. SCALE 1"=2.00' 12 69

FIG. No. 21

2E 69 104 7B

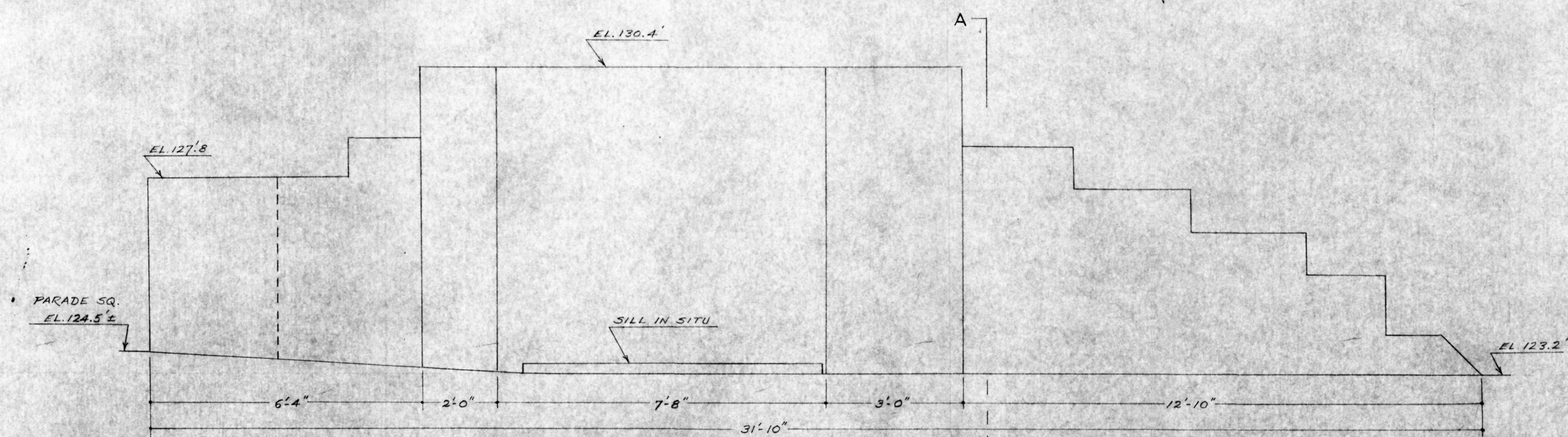


SECTION A-A



ELEVATION: NORTH FACE OF SOUTH WALL

EAST END OF SOUTH WALL



ELEVATION: SOUTH FACE OF NORTH WALL

N. H. S. S.
 FORT BEAUSEJOUR OPERATION 2E26
 1755 BRITISH ENTRANCE
 DIMENSIONS FOR RECONSTRUCTION

AEW. SCALE 1"=2'-0" 12 69

