

Health Canada Protects Bees from Pesticides



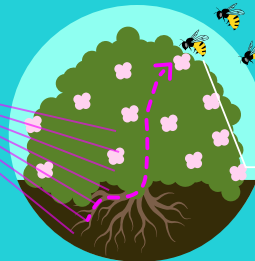
Bees move pollen from one flowering plant to another so plants can produce seed and fruit

Bees are the most common pollinator and are crucial to food production

Pesticides used in soil, seeds and sprays can expose bees to pesticides when they land on the plant or when they feed on nectar and pollen



RISKS



Bees are attracted to flowering plants and use the pollen and nectar for their food

PROTECT

Health Canada has an extensive program in place to assess risks to bees from pesticides including best management practices



Remove flowering groundcover before application



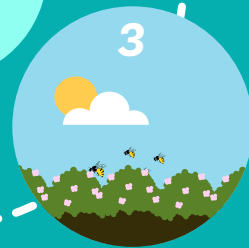
Apply pesticides only in the spring after blooms have fallen



Apply pesticides later in the evening



And, since bees feed mostly during the day,



For more information, visit www.canada.ca/pollinators
#PMRA #bees #pollinators #plan4bees