

# Health Canada Cares About Bees

Exposure and Effects of Pesticides Can Put Bees at Risk

## How?

Some pesticides are sprayed on plants

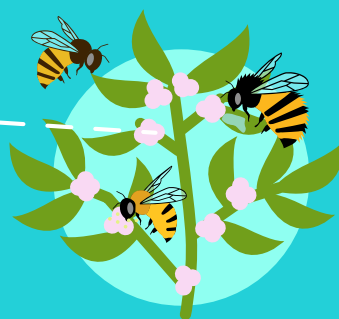


How bees are exposed depends on how they interact with the plants and pesticides

Some can also be taken up by the roots or leaves and move to other parts of the plant

## Exposure

When bees land on the plant and feed on nectar and pollen

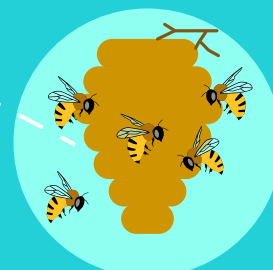


## Effects

Could be seen on:



Adults & Larvae



Colony



Health Canada scientists determine the level of risk to bees by completing a thorough, science-based risk assessment. Based on this information, they decide how to manage the risk to best protect bees.

Determine the Level of Risk

Managing Risk



Only after all of these steps will the scientists approve:

How, When, Where, and If  
a pesticide can be used in Canada

For more information, visit

[www.canada.ca/pollinators](http://www.canada.ca/pollinators)

#PMRA #bees #pollinators #plan4bees