



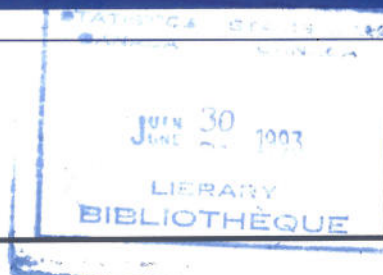
# The Daily

Statistics Canada

NOT FOR LOAN  
NE S'EMPRUNTE PAS

Wednesday, June 30, 1993

For release at 8:30 a.m.



## MAJOR RELEASES

- **Real Gross Domestic Product at Factor Cost by Industry, April 1993** 3  
Gross Domestic Product at factor cost was unchanged in April following a 0.6% gain in March and average monthly growth of 0.4% since December.
- **Unemployment Insurance Statistics, April 1993** 6  
The seasonally adjusted number of beneficiaries receiving regular benefits remained virtually unchanged at 1.1 million in April 1993. Between November 1992 and March 1993, the number of beneficiaries decreased every month.
- **Field Crop Reporting Series No. 4: Preliminary Estimates of Principal Field Crop Areas, Canada, 1993** 8  
In 1993, agricultural producers seeded a record 10.3 million acres of canola, up 2.4 million acres from last year. The area seeded to wheat is down 9.4% to 32.2 million acres.
- **Residential Building Permits, May 1993 (Advance Estimate)** 9  
The value of residential building permits rose 1.4% and the number of dwelling units authorized rose 1.3% from April 1993. Both increases were entirely attributable to the single-family dwelling sector.
- **Focus on Culture, Summer 1993** 11  
The Canadian periodical industry has made progress in reducing the environmental impact of its activities. In 1991-92, 20% of periodicals used recycled paper compared with 12% the previous year.

(continued on page 2)

### Focus on Culture

Summer 1993

The Summer 1993 issue of *Focus on Culture* contains articles on periodical publishing and the environment; the cultural labour force; attendance at heritage institutions; and fine and applied arts graduates.

The Summer 1993, Vol. 5, No. 1 issue of *Focus on Culture* (87-004, \$6.25/\$25) is now available. See "How to Order Publications."

For more information, contact Claire McCaughey (613-951-1562), Education, Culture and Tourism Division.



Statistics  
Canada

Statistique  
Canada

Canada

---

## DATA AVAILABILITY ANNOUNCEMENTS

---

Occupation Data – 1991 Standard Occupational Classification, 1991 Census	12
Federal Government Enterprise Finance, 1991 Actual (Fiscal Year Ended Nearest to December 31)	12
Coal and Coke Statistics, April 1993	12
Electric Power Statistics, April 1993	12
Cement, May 1993	13
Fruit and Vegetable Production, July 1993	13

---

## PUBLICATIONS RELEASED 14

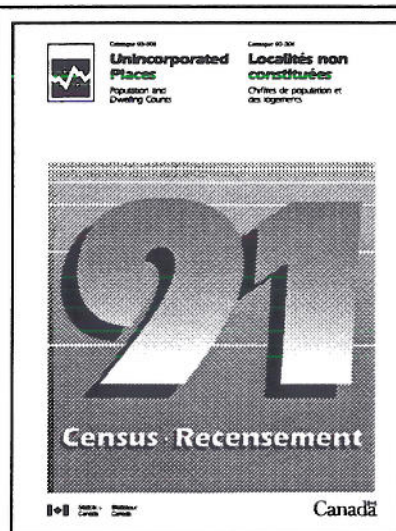
---

## REGIONAL REFERENCE CENTRES 15

---

## MAJOR RELEASE DATES: JULY 1993 16

---



### Unincorporated Places 1991 Census

*Unincorporated Places* is now available.

An unincorporated place is a cluster of five or more occupied dwellings situated in a rural area that is known locally by a specific name but that has no local government or legal boundaries.

This publication presents 1991 population counts for all unincorporated places in Canada, in alphabetical order by province. It also indicates the census subdivision in which each unincorporated place is located.

To order a copy of *Unincorporated Places* (93-306, \$45), contact your nearest Statistics Canada Regional Office.



---

## MAJOR RELEASES

---

### Real Gross Domestic Product at Factor Cost by Industry

April 1993

Gross Domestic Product at factor cost was unchanged in April following a 0.6% gain in March and average monthly growth of 0.4% since December.

#### Seasonally Adjusted

The pause in April was mainly due to a 0.8% drop in goods production, which had surged 1.0% in March and which has led the recovery in recent months. Output of services rose 0.3%, following similar increases in February and March.

#### Goods-producing Industries

The decline in goods output followed growth averaging 0.6% per month since last November, and was concentrated in manufacturing and construction. Mining was the only major goods-producing industry to record a gain.

Manufacturers curbed production 1.0% following a 1.9% surge in March. The pullback was concentrated in durable goods, where lower output of wood, transportation equipment and electrical products accounted for approximately 70% of the overall manufacturing decline. Even so, smaller declines were widespread as 17 of 21 major groups produced less in April. Higher output of machinery and equipment moderated the loss.

Wood production fell 4.9% as sawmill operators and veneer and plywood producers reduced output sharply. Between September 1992 and March 1993, sawmill output had increased 9.0% as demand and prices soared. Lower exports of wood products and a slump in domestic construction curbed demand in April, however, and prices receded 2.7%.

Manufacturers of transportation equipment cut production 1.7% following several monthly increases. Producers of motor vehicle parts reduced output 2.9%, while output of vehicle assemblies was pared 2.6%. Exports of motor vehicles fell in April after posting several large gains since last November.

Production of electrical products dropped 1.8% following a 4.2% gain in March. Most of the weakness was attributable to lower output of electronic equipment, notably telecommunications equipment. A small gain in office machinery

moderated the decline. Shipments abroad of electronic equipment have been weakening since the beginning of the year.

Following increases in February and March, output of machinery and equipment rose a further 3.2% in April – the only substantial advance among the major manufacturing industries.

Construction output slipped 1.2% following a 0.4% decline in March. Despite better new housing sales in March and April, residential construction dropped 1.6%, mainly due to less construction of single dwellings. The stock of unoccupied single and double dwellings has remained high in recent months. Construction of non-residential buildings fell 4.7% after dropping 1.3% in March.

Mining output rose 1.2%, its fourth consecutive monthly gain. A 1.5% increase in output of crude oil and natural gas contributed most to the advance. Higher production by iron mines and increased drilling activity also helped. Declines in gold and other metal mines moderated the gain.

Elsewhere in the goods sector, utilities' output fell 1.4% after dropping 1.8% in March. Production of electricity and distribution of gas were both down in April. Forestry output fell 4.9%, reflecting the weakness in sawmills and construction activities, and reflecting lower demand abroad for wood products.

#### Services-producing Industries

Services advanced for a fifth consecutive month, with finance, insurance and real estate accounting for almost 60% of the increase. Sizeable gains were also recorded in community, business and personal services and in retail trade. Communications rebounded from a decline in March, but wholesale trade decreased sharply, as did transportation and storage. Government services slid for a fifth consecutive month.

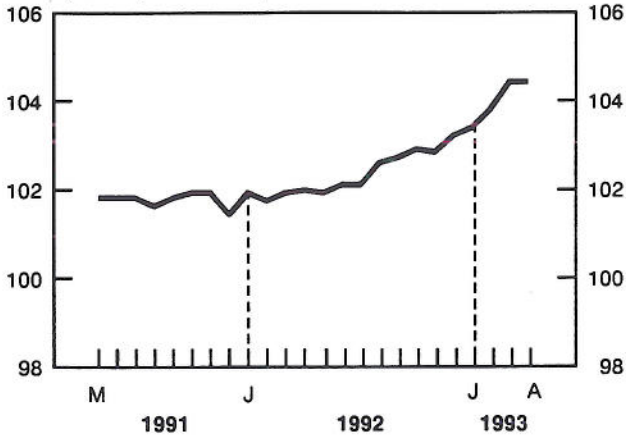
Increased activity by real estate agents led a 0.8% gain in finance, insurance and real estate services. The resale housing market in most provinces rebounded in April after slumping since late last year, when interest rates surged for a few months. Despite the gain, real estate output remained lower than a year earlier. Mutual fund activities increased for a third consecutive month as assets continued to grow rapidly. These gains more than offset a decline in brokerage services, which subsided following a plethora of new issues of corporate stock and provincial bonds in March.

# Gross Domestic Product

seasonally adjusted at 1986 prices

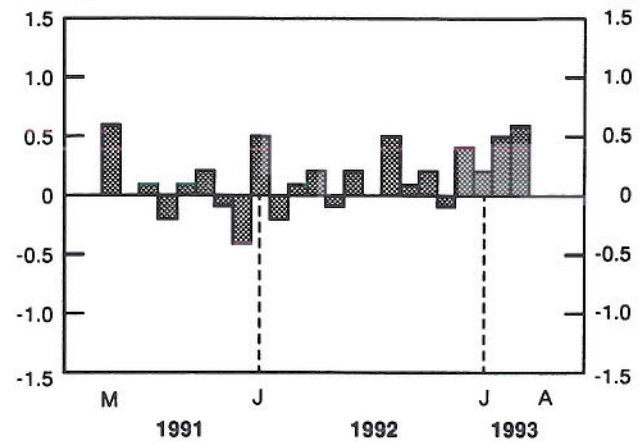
**Total Economy**

Index (January 1991 = 100)



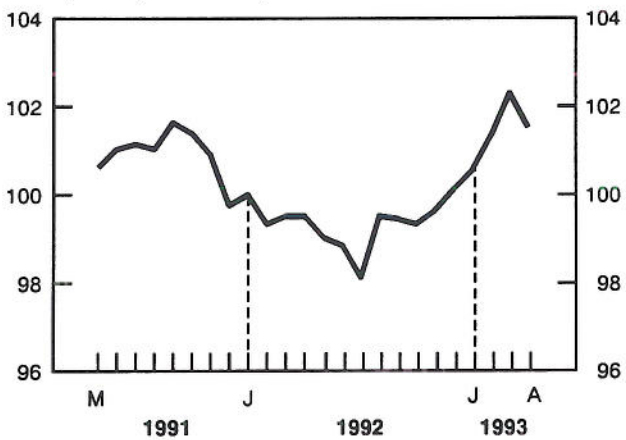
**Total Economy**

% change



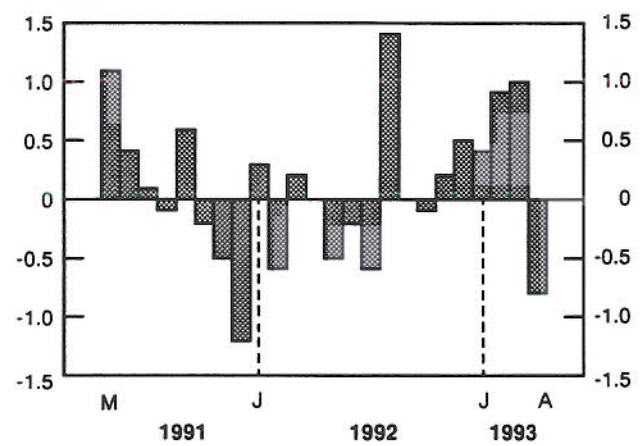
**Goods**

Index (January 1991 = 100)



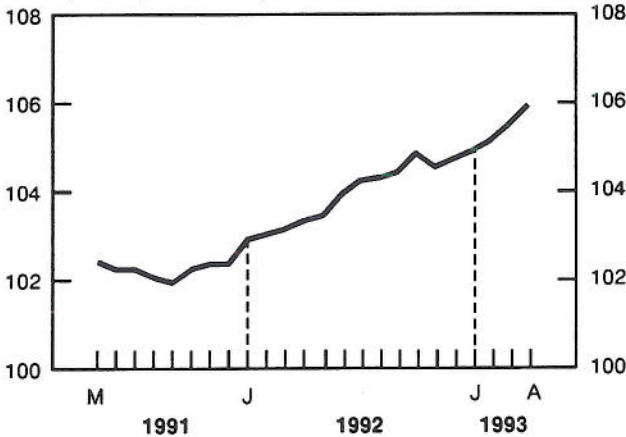
**Goods**

% change



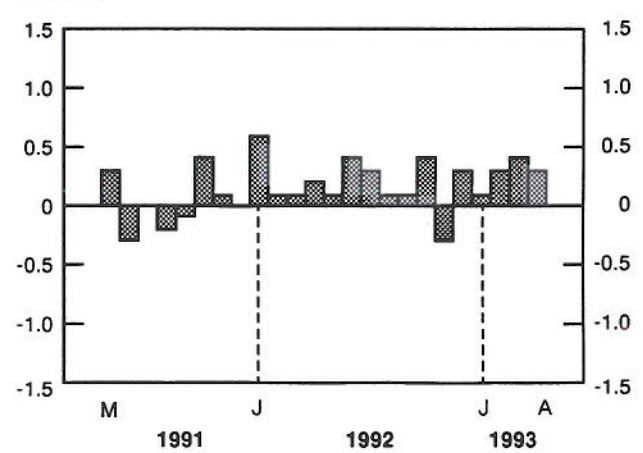
**Services**

Index (January 1991 = 100)



**Services**

% change





Bolstered by widespread gains, community, business and personal services advanced 0.8%, its third consecutive monthly gain. Amusement services rose 4.8% after declining in February and March. Higher attendance at sporting events and increased sales by lottery corporations were responsible for most of the gain. Hotel and restaurant services rose 0.9%, mainly due to higher spending in restaurants.

Retailers increased production 1.1% in April as 13 of 18 trade groups recorded higher sales, compared with 10 in March. Motor vehicle dealers increased sales the most as purchases of new cars and trucks improved for a second consecutive month.

Wholesalers recorded lower output for a second consecutive month, declining 1.0%. Only three of eleven trade groups posted higher sales in April. Wholesalers of lumber, machinery and equipment and wholesalers of food recorded the largest declines.

Transportation and storage services slipped 0.6% after improving in the previous two months. Lower trucking activity dragged transportation output down 0.8%. Output by pipelines slowed to 0.7% - after gains that averaged 4.0% in the previous two months - as domestic and external demand for natural gas softened.

Available on CANSIM: matrices 4670-4674

The April 1993 issue of *Gross Domestic Product by Industry* (15-001, \$12.70/\$127) is scheduled for release in July.

For further information, contact Michel Girard (613-951-9145), Industry Measures and Analysis Division.

### Real Gross Domestic Product at Factor Cost by Industry at 1986 Prices

	April 1992	January 1993	February 1993	March 1993	April 1993
	seasonally adjusted \$ millions				
<b>Total Economy</b>	<b>500,717.2</b>	<b>507,278.3</b>	<b>509,601.1</b>	<b>512,493.5</b>	<b>512,259.1</b>
<b>Business Sector:</b>	<b>408,777.1</b>	<b>414,187.3</b>	<b>416,552.0</b>	<b>419,498.4</b>	<b>419,300.1</b>
<b>Goods:</b>	<b>165,033.2</b>	<b>166,618.3</b>	<b>168,063.9</b>	<b>169,725.4</b>	<b>168,342.5</b>
Agriculture	10,795.4	10,419.6	10,612.0	10,491.7	10,485.1
Fishing and Trapping	922.3	853.5	859.6	848.7	843.9
Logging Industry	2,431.4	2,906.6	2,935.5	2,989.7	2,842.8
Mining Industries	20,354.2	20,161.4	20,682.4	21,174.7	21,432.3
Manufacturing Industries	84,755.9	88,210.3	88,435.8	90,082.8	89,163.2
Construction Industries	29,540.1	27,565.5	27,664.2	27,563.3	27,226.0
Other Utility Industries	16,233.9	16,501.4	16,874.4	16,574.5	16,349.2
<b>Services:</b>	<b>243,743.9</b>	<b>247,569.0</b>	<b>248,488.1</b>	<b>249,773.0</b>	<b>250,957.6</b>
Transportation and Storage	21,872.0	21,780.4	22,111.0	22,207.7	22,076.9
Communication Industries	19,409.3	19,658.8	19,778.8	19,616.9	19,727.2
Wholesale Trade	29,305.2	30,195.7	30,263.0	30,213.7	29,920.7
Retail Trade	29,993.7	30,923.8	30,641.1	30,731.0	31,066.2
Finance, Insurance and Real Estate	82,843.8	83,931.8	84,412.7	85,532.1	86,230.3
Community, Business and Personal Services	60,319.9	61,078.5	61,281.5	61,471.6	61,936.3
<b>Non-business Sector:</b>	<b>91,940.1</b>	<b>93,091.0</b>	<b>93,049.1</b>	<b>92,995.1</b>	<b>92,959.0</b>
<b>Goods:</b>	<b>930.6</b>	<b>913.7</b>	<b>931.8</b>	<b>935.4</b>	<b>908.9</b>
<b>Services:</b>	<b>91,009.5</b>	<b>92,177.3</b>	<b>92,117.3</b>	<b>92,059.7</b>	<b>92,050.1</b>
Government Service Industry	33,979.3	34,379.9	34,315.1	34,239.5	34,173.5
Community and Personal Services	53,583.1	54,220.8	54,229.2	54,220.8	54,256.8
Other Services	3,447.1	3,576.6	3,573.0	3,599.4	3,619.8
<b>Other Aggregations:</b>					
Goods-producing Industries	165,963.8	167,532.0	168,995.7	170,660.8	169,251.4
Services-producing Industries	334,753.4	339,746.3	340,605.4	341,832.7	343,007.7
Industrial Production	122,274.6	125,786.8	126,924.4	128,767.4	127,853.6
Non-durable Manufacturing	39,405.5	39,898.6	39,675.8	40,413.8	40,181.9
Durable Manufacturing	45,350.4	48,311.7	48,760.0	49,669.0	48,981.3

## Unemployment Insurance Statistics

April 1993

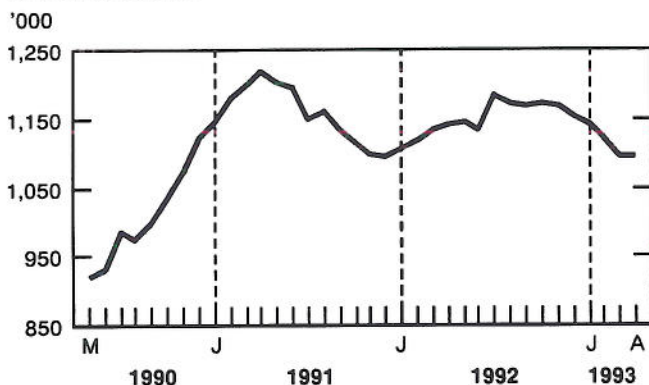
The seasonally adjusted number of beneficiaries receiving regular benefits remained virtually unchanged at 1.1 million in April 1993. Between November 1992 and March 1993, the number of beneficiaries decreased every month.

### Seasonally Adjusted

For the week ended April 17, 1993, the number of beneficiaries who received regular unemployment insurance benefits was estimated at 1,093,000, almost unchanged from March.

### Beneficiaries Receiving Regular Unemployment Insurance Benefits

seasonally adjusted



Between March and April 1993, the number of beneficiaries who received regular benefits increased 6.5% in the Yukon, 1.9% in Prince Edward Island and 1.4% in Newfoundland. The number of beneficiaries decreased 2.8% in Alberta, 1.2% in the Northwest Territories and 1.1% in Manitoba. The number of such beneficiaries in the other provinces changed by less than 1.0%.

### Unadjusted

In April 1993, the estimated number of beneficiaries (including all persons qualifying for regular and special unemployment insurance benefits) was 1,468,000, down 6.3% from April 1992. Over the same 12-month period, the number of male beneficiaries decreased 7.0% to 862,000, and the number of female beneficiaries decreased 5.2% to 606,000.

### Note to Users

The number of beneficiaries is a count of persons who qualified for unemployment insurance benefits during a specific week of the reference month.

Data on benefit payments, number of benefit weeks, and number of claims received relate to a complete calendar month and are usually final estimates when released. These estimates are affected by the number of working days available during the reference month to process claims and to pay benefits. It is common when making short-term comparisons to observe different trends between these data and the number of beneficiaries.

The unemployment insurance disbursements include disbursements to schools and colleges to train beneficiaries (since February 1991) and disbursements to claimants as self-employment assistance (since June 1992).

Unemployment insurance disbursements in April 1993 totalled \$1.7 billion, down 3.8% from April 1992. From January to April 1993, a total of \$7.4 billion was paid in benefits, down 1.8% from the same period a year earlier. Comparing the same four-month periods, the average weekly payment increased 3.1% to \$265.12, but the number of benefit weeks decreased 5.1% to 27.1 million.

A total of 225,000 claims (applications) for unemployment insurance benefits were received in April 1993, down 13.8% from April 1992. For January to April 1993, 1,067,000 claims were received, a 17.2% decrease from the same period in 1992. The decrease reflects a larger than usual number of applications for unemployment insurance benefits during the same time last year.

Available on CANSIM: matrices 26 (series 1.6), 5700-5717 and 5735-5736.

The April 1993 issue of *Unemployment Insurance Statistics* (73-001, \$14.70/\$147), which contains data for February, March and April, will be available in July. See "How to Order Publications".

For more information, please call Carole Lacroix (613-951-4039) or André Picard (613-951-4045), Labour Division (fax: 613-951-4087). □



# Unemployment Insurance Statistics

		April 1992	February 1993	March 1993	April 1993	March 1993 to April 1993
		seasonally adjusted				% change
<b>Regular Benefits</b>						
Beneficiaries	'000	1,141	1,119 <sup>r</sup>	1,092 <sup>p</sup>	1,093 <sup>p</sup>	0.0
Amount paid	\$'000	1,243,261	1,256,708	1,253,605	1,242,549	-0.9
Weeks of benefits	'000	4,957	4,903	4,895	4,839	-1.1
						April 1992 to April 1993
		unadjusted				% change
All beneficiaries	'000	1,566	1,559 <sup>r</sup>	1,522 <sup>p</sup>	1,468 <sup>p</sup>	-6.3
Regular beneficiaries	'000	1,289	1,312 <sup>r</sup>	1,281 <sup>p</sup>	1,234 <sup>p</sup>	-4.3
Claims received	'000	261	225	262	225	-13.8
Amount paid	\$'000	1,796,585	1,768,434	2,069,103	1,728,918	-3.8
Weeks of benefits	'000	6,778	6,448	7,530	6,272	-7.5
Average weekly benefit	\$	256.05	266.02	265.44	264.70	3.4
		January to April				1992 to 1993
		1992	1993			
<b>Year-to-date</b>						
						% change
Beneficiaries – Average	'000	1,582		1,528 <sup>p</sup>		-3.4
Claims received	'000	1,289		1,067		-17.2
Amount paid	\$'000	7,539,301		7,401,292		-1.8
Weeks of benefits	'000	28,534		27,083		-5.1
Average weekly benefit	\$	257.13		265.12		3.1

<sup>p</sup> Preliminary figures.

<sup>r</sup> Revised figures.

" All beneficiaries" includes all claimants who receive regular benefits (e.g., because of lay-off) or special benefits (e.g., in case of sickness).

---

## **Field Crop Reporting Series No. 4: Preliminary Estimates of Principal Field Crop Areas, Canada 1993**

In 1993, agricultural producers seeded a record 10.3 million acres of canola, up 2.4 million acres from last year. The area seeded to wheat is down 9.4% to 32.2 million acres.

Western farm operators in 1993 have increased their land in grains and summerfallow, reversing a three-year trend of declining acreage. In 1993, the area of grains and summerfallow increased to 79.2 million acres, up 2.4% from 1992 and up slightly from the 1991 Census area of 78.7 million acres.

### **Canola and Flaxseed**

Western producers have seeded a record 10.3 million acres of canola, up 30.5% from last year. This increase is higher than the seeding intentions that producers reported at the end of March 1993. The largest area seeded to canola prior to 1993 was 9.1 million acres in 1988. The area in flaxseed is up 80.3% to 1.3 million acres, returning to traditional levels (the five-year average from 1988 to 1992 is 1.3 million acres).

### **Specialty Crops**

Producers in the West have seeded record areas in dry peas, lentils and canary seed. The 1.3 million acres seeded to dry peas is up 85.2% from last year. The area in lentils is 920 thousand acres, up 230 thousand acres from the 1992 area. Canary seed area increased 33.9% to 312 thousand acres in 1993.

Increases were also reported in mustard seed and sunflower seed, reaching 465 thousand acres and 230 thousand acres, respectively.

### **Wheat, Oats and Barley**

In Western Canada, producers reduced the area seeded in spring wheat to 27.7 million acres, a decrease of 10.1% from last year. Durum wheat is down 1.9% to 3.7 million acres, the lowest since 1983. The area of barley is up 13.4% from last year, to 10.3 million acres. The seeded area of oats in 1993 is 3.9 million acres, 8.9% higher than last year and back to 1988-89 levels.

### **Corn and Soybeans**

In Eastern Canada, the area seeded in corn for grain has decreased by 2.4% to 2.5 million acres. The Quebec area decreased by 4.2%, the first decline in corn for grain area since 1972 in Quebec. Eastern Canadian producers seeded a record 1.9 million acres in soybeans, up 16.5% from last year.

**Available on CANSIM: matrices 1025-1043, 1045-1048, 1050-1051, 3541-3565.**

*Field Crop Reporting Series No. 4: Preliminary Estimates of Principal Field Crop Areas, Canada (22-002, \$12/\$80) is now available. See "How to Order Publications".*

Copies of this publication are available by fax to subscribers. For further information, please contact the Crops Section (613-951-8717), Agriculture Division. ■



## Residential Building Permits

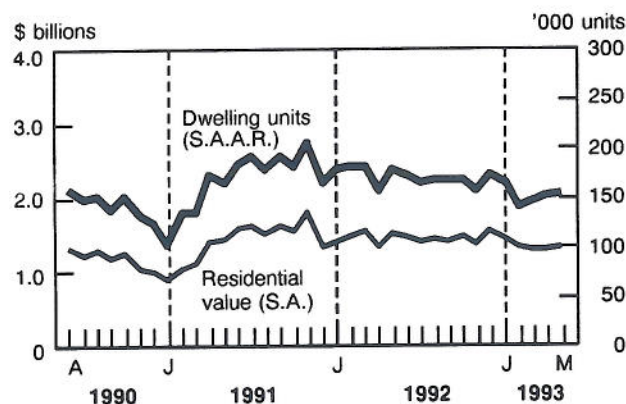
May 1993 (Advance Estimate)

From April 1993, the value of residential building permits rose 1.4% and the number of dwelling units authorized rose 1.3%. Both increases were entirely attributable to the single-family dwelling sector.

### Residential Sector

The seasonally adjusted advance estimate for May indicates that the value of residential building permits issued in Canada increased to \$1,292 million, up 1.4% from the revised value for April 1993 (\$1,274 million). This increase was entirely attributable to the single-family dwelling sector (5.8%), while the multi-family dwelling sector decreased 7.6%.

### Value of Residential Building Permits and Number of Authorized Dwelling Units



Note: Revised data for April, advanced data for May.

S.A.A.R.: Seasonally adjusted at annual rate (right scale)  
S.A.: Seasonally adjusted at monthly rate (left scale)

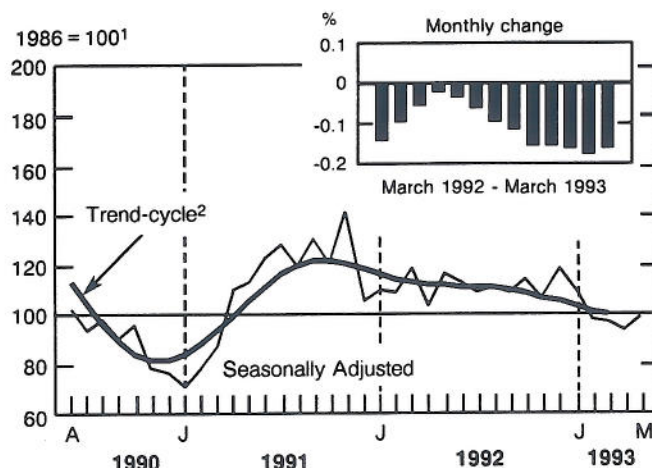
The advance estimate of dwelling units authorized in May 1993 increased 1.3% to 152,000 units at annual rates, up from some 150,000 (revised) units reported in April. A 6.7% increase in the single-family dwelling sector was partly offset by a 4.5% decrease in the multi-family dwelling sector.

### Residential Building Permits Index

The residential building permits index (excluding engineering projects) rose 5.4% in May 1993 to 98.1, reflecting the first monthly increase in the last five

months. In spite of this increase, the building permits index fell 16.6% compared with the December 1992 level (117.6).

### Residential Building Permits Index



<sup>1</sup> This series is deflated by using the construction input price index, which includes cost of material and labor.

<sup>2</sup> The trend-cycle shows the seasonally adjusted value of building permits without irregular influences that can affect the short-term trend. In order to reduce the number of false signals in the construction activity series, the trend-cycle is published with a two-month lag.

The residential building permits index short-term trend continued to show a downward drift, as it has since October 1991, decreasing on average by 1.4% per month from 120.6 to 98.9 between October 1991 and March 1993; this represents a drop of about 18.0%. Particularly, the trend decreased 1.6% in March 1993 compared with the February level of 100.5.

The residential building permits advance estimate is based on results received from over 90.0% of the municipalities surveyed.

The residential and non-residential building permits preliminary estimate for April 1993 will be released on July 16.

For further analytical information, contact Michel Labonté (613-951-9690), Current Investment Indicators Section, Investment and Capital Stock Division. □

### Value of Residential Building Permits (Advance Estimate)

	Value			
	April 1993 <sup>r</sup>	May 1993 <sup>a</sup>	April 1993 <sup>r</sup> to May 1993 <sup>a</sup>	May 1992 to May 1993 <sup>a</sup>
	\$ thousands		% change	
<b>Canada</b>				
Seasonally Adjusted	1,274,094	1,291,791	1.4	-12.8
Raw	1,762,864	1,714,872	-2.7	-9.2

<sup>a</sup> Advance figures.

<sup>r</sup> Revised figures.

### Number of Dwelling Units Authorized (Advance Estimate)

	Annual rate			
	April 1993 <sup>r</sup>	May 1993 <sup>a</sup>	April 1993 <sup>r</sup> to May 1993 <sup>a</sup>	May 1992 to May 1992 <sup>a</sup>
	units		% change	
<b>Canada</b>				
Seasonally Adjusted	150,108	152,100	1.3	-13.8
Raw	211,356	193,944	-8.2	-10.5

<sup>a</sup> Advance figures.

<sup>r</sup> Revised figures.





---

## Focus on Culture

Summer 1993

The Canadian periodical industry has made progress in reducing the environmental impact of its activities. In 1991-92, 20% of periodicals used recycled paper compared with 12% the previous year. The percentage of periodicals using vegetable-based ink increased to 31% from 22% over the same period.

The Summer 1993 issue of *Focus on Culture* contains articles on periodical publishing and the environment; the cultural labour force; attendance at heritage institutions; and fine and applied arts graduates.

### Cultural Labour Force

According to Census data, the cultural labour force increased by 14%, from 314,000 in 1986 to 358,000 in 1991. The number of people in arts occupations increased 19%, more than twice the increase observed in other cultural sector occupations. Women entered the cultural labour force at almost twice the rate of men (19% for men, 10% for women).

### Heritage Institutions

In 1990-91, attendance at heritage institutions remained stable overall, with 57 million visits reported. This did not hold true, however, across all provinces and institution types (e.g., museums, historic sites, archives, etc.)

### University Fine and Applied Arts Programs

Enrolment in university fine and applied arts programs more than doubled over the past two decades. A recent report on graduates shows that, in 1988, only 33% of fine and applied arts graduates who had full-time work were in jobs directly related to their education. This was, however, up from 23% reported in 1984.

The Summer 1993, Vol. 5, No. 1 issue of *Focus on Culture* (87-004, \$6.25/\$25) is now available. See "How to Order Publications."

For more information, contact Claire McCaughey (613-951-1562), Education, Culture and Tourism Division. ■

---

## DATA AVAILABILITY ANNOUNCEMENTS

---

### Occupation Data – 1991 Standard Occupational Classification

1991 Census

Occupation data from the 1991 Census are now available according to the 1991 Standard Occupational Classification (SOC). The 1991 SOC is a new structure that classifies occupation data and provides more up-to-date job titles and occupation descriptions.

The data are also organized by the National Occupational Classification (NOC) structure used by Employment and Immigration Canada.

A release package that contains detailed occupation counts cross-classified by sex for Canada, the provinces and territories is available for both the 1991 SOC and NOC. Data for census metropolitan areas can be ordered separately.

For more information, contact your nearest Statistics Canada Regional Reference Centre. ■

### Federal Government Enterprise Finance

1991 Actual (Fiscal Year Ended Nearest to December 31)

In 1991, federal government business enterprises (including monetary authorities) earned an after-tax profit of \$2,135 million, down \$3,509 million or 62.2% from the previous year.

Total income reached \$25,878 million in 1991, down \$2,902 million or 10.1% from the previous year; total expenses increased by \$1,175 million or 5.1% to total \$24,104 million.

The gross debt (total liabilities) of federal government business enterprises stood at \$88,370 million at the end of 1991, up \$3,445 million or 4.1% from the previous year.

Note that revisions to data for the years 1974 to 1990 have been made in order to ensure that the series are consistent over time.

**Available on CANSIM: matrices 3201-3240.**

For further information on this release, contact Paul Gratton (613-951-1816) or Richard Sauriol (613-951-1829), Public Holdings Section, Public Institutions Division.

Data are also available through custom and special tabulations. For more information or general

inquiries on Public Institutions Division's products or services, contact Patricia Phillips, Data Dissemination Co-ordinator (613-951-0767). ■

### Coal and Coke Statistics

April 1993

Production of coal totalled 5 371 kilotonnes in April 1993, down 10.7% from April 1992. Year-to-date production at the end of April 1993 stood at 22 709 kilotonnes, down 9.1% from the previous year.

Exports in April fell to 2 472 kilotonnes, down 14.2% from April 1992, while imports fell 50.4% to 606 kilotonnes. For January to April 1993, exports totalled 8 211 kilotonnes, 25.4% below last year.

Coke production increased to 310 kilotonnes, up 6.2% from April 1992.

**Available on CANSIM: matrix 9.**

The April 1993 issue of *Coal and Coke Statistics* (45-002, \$10/\$100) will be available the first week of July. See "How to Order Publications".

For more detailed information on this release, contact Dave Madsen (613-951-9823), Energy Section, Industry Division. ■

### Electric Power Statistics

April 1993

Net generation of electric energy in April 1993 decreased to 39 980 gigawatt hours (GWh), down 0.05% from April 1992. Exports decreased 1.2% to 2 146 GWh; imports increased from 566 GWh to 782 GWh.

Year-to-date net generation at the end of April 1993 amounted to 185 305 GWh, up 2.0% from the previous year. Exports, at 9 737 GWh, were up 14.0% but imports, at 2 640 GWh, were down 0.6%.

**Available on CANSIM: matrices 3987-3999.**

The April 1993 issue of *Electric Power Statistics* (57-001, \$9/\$90) will be available the first week of July. See "How to Order Publications".

For more detailed information on this release, contact Dave Madsen (613-951-9823), Energy Section, Industry Division. ■



---

## Cement

May 1993

Manufacturers shipped 912 713 tonnes of cement in May 1993, up 4.7% from 871 865r (revised) tonnes shipped a year earlier and up 38.0% from 661 456r tonnes shipped in April 1993.

For January to May 1993, shipments totalled 2 628 445r tonnes, up 1.3% from 2 594 739r tonnes shipped during the same period in 1992.

**Available on CANSIM: matrices 92 and 122 (series 35).**

The May 1993 issue of *Cement* (44-001, \$5/\$50) will be available at a later date.

For more detailed information on this release, contact Roland Joubert (613-951-3527), Industry Division. ■

## Fruit and Vegetable Production

July 1993

The most recent updates to production and value of fruits data and to area, production and value of vegetables data are now available. This includes 1991 estimates for processed fruits and 1992 estimates for processed vegetables.

**Available on CANSIM: matrices 1371-1395, 1397-1399, 1401-1406, 5587-5590, 5593-5610, 5614-5620, 5623-5624 and 5627.**

For further information, order the July issue of *Fruit and Vegetable Production* (22-003, \$18/\$72) or contact G. Mason (613-951-0574), Agriculture Division. ■

## PUBLICATIONS RELEASED

**Field Crop Reporting Series No. 4: Preliminary Estimates of Field Crop Area, Canada, 1993**  
**Catalogue number 22-002**  
(Canada: \$12/\$80; United States: US\$14/US\$96;  
Other Countries: US\$16/US\$112).

**Hospital Statistics: Preliminary Annual Report, 1990-91.**  
**Catalogue number 83-241**  
(Canada: \$15).

**Focus on Culture, Vol. 5, No. 2. Summer 1993.**  
**Catalogue number 87-004**  
(Canada: \$6.25/\$25; United States: US\$7.50/US\$30;  
Other Countries: US\$8.75/US\$35).

**Unincorporated Places, 1991 Census.**  
**Catalogue number 93-306**  
(Canada: \$45; United States: US\$54; Other  
Countries: US\$63).

The paper used in this publication meets the minimum requirements of American National Standard for Information Sciences - Permanence of Paper for Printed Library Materials, ANSI Z39.48 - 1984.



### How to Order Publications

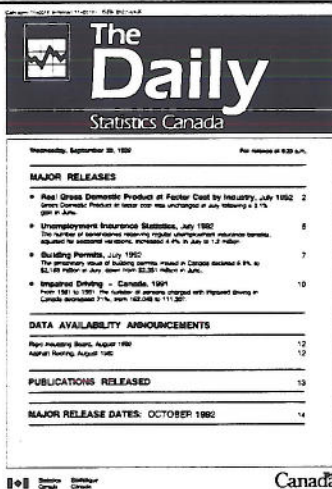
*Simplify your search for data with the Statistics Canada Catalogue 1993. Using the keyword index, you'll find sources for statistics on all areas of Canadian social and economic activity. For easy access to over 900 Statistics Canada products and services, order the Statistics Canada Catalogue 1993 (11-204E, \$13.95; United States: US\$17; Other Countries: US\$20).*

*You may order Statistics Canada products and services by telephone. From Canada and the United States, call toll-free 1-800-267-6677. From all other locations, call 613-951-7277 (not toll-free).*

*You may purchase Statistics Canada publications by writing to Publication Sales, Room 1710, Main Building, Statistics Canada, Ottawa K1A 0T6.*

*Please enclose a cheque or money order payable to the Receiver General for Canada/Publications. Provide full information on each publication order (catalogue number, title, issue). Canadian customers, please add 7% GST.*

*Publications may also be ordered from Statistics Canada's Regional Reference Centres in St. John's, Halifax, Montreal, Ottawa, Toronto, Winnipeg, Regina, Edmonton, Calgary and Vancouver, or from authorized bookstore agents or other booksellers.*



### Statistics Canada's Official Release Bulletin for Statistical Information

Catalogue 11-001E. Price: Canada: \$120.00 annually; United States: US\$144.00 annually;  
Other Countries: US\$168.00 annually

Published by the Communications Division  
Statistics Canada, 10-N, R.H. Coats Bldg., Tunney's Pasture, Ottawa, Ontario K1A 0T6.

Senior Editor: Greg Thomson (613-951-1187)  
Editor: Tim Prichard (613-951-1103)

Published by authority of the Minister responsible for Statistics Canada. © Minister of Industry, Science and Technology, 1993. All rights reserved. No part of this publication may be reproduced, stored in a retrieval system or transmitted in any form or by any means, electronic, mechanical, photocopying, recording or otherwise without prior written permission from Licence Services, Marketing Division, Statistics Canada, Ottawa, Ontario, Canada K1A 0T6.



---

## REGIONAL REFERENCE CENTRES

---

Statistics Canada's Regional Reference Centres provide a full range of the agency's products and services. Each reference centre is equipped with a library and a sales counter where users can consult or purchase publications, microcomputer and CD-ROM diskettes, microfiche, maps and more.

Each centre has facilities to retrieve information from CANSIM and E-STAT, Statistics Canada's computerized data retrieval systems. A telephone inquiry service is available with toll-free access for clients who are located outside local calling areas. Many other valuable services – from seminars to consultations – are also offered. Call or write your nearest Statistics Canada Regional Reference Centre for more information.

### **Newfoundland and Labrador**

Advisory Services  
Statistics Canada  
3rd Floor  
Viking Building  
Crosbie Road  
St. John's, Newfoundland  
A1B 3P2  
Toll free: 1-800-565-7192  
Fax: 1-709-772-6433

### **Maritime Provinces**

Advisory Services  
Statistics Canada  
North American Life Centre  
1770 Market Street  
Halifax, Nova Scotia  
B3J 3M3  
Local calls: (902) 426-5331  
Toll free: 1-800-565-7192  
Fax: 1-902-426-9538

### **Quebec**

Advisory Services  
Statistics Canada  
Suite 412, East Tower  
Guy Favreau Complex  
200 René Lévesque Blvd. W.  
Montreal, Quebec  
H2Z 1X4  
Local calls: (514) 283-5725  
Toll free: 1-800-361-2831  
Fax: 1-514-283-9350

### **National Capital Region**

Advisory Services  
Statistical Reference Centre (NCR)  
Statistics Canada  
R.H. Coats Building Lobby  
Holland Avenue  
Tunney's Pasture  
Ottawa, Ontario  
K1A 0T6  
Local calls: (613) 951-8116  
If outside the local calling area, please dial  
the toll free number for your province.  
Fax: 1-613-951-0581

### **Ontario**

Advisory Services  
Statistics Canada  
10th Floor  
Arthur Meighen Building  
25 St. Clair Avenue East  
Toronto, Ontario  
M4T 1M4  
Local calls: (416) 973-6586  
Toll free: 1-800-263-1136  
Fax: 1-416-973-7475

### **Manitoba**

Advisory Services  
Statistics Canada  
MacDonald Building  
Suite 300  
344 Edmonton Street  
Winnipeg, Manitoba  
R3B 3L9  
Local calls: (204) 983-4020  
Toll free: 1-800-563-7828  
Fax: 1-204-983-7543

### **Saskatchewan**

Advisory Services  
Statistics Canada  
Avord Tower, 9th Floor  
2002 Victoria Avenue  
Regina, Saskatchewan  
S4P 0R7  
Local calls: (306) 780-5405  
Toll free: 1-800-563-7828  
Fax: 1-306-780-5403

### **Alberta and the Northwest Territories**

Advisory Services  
Statistics Canada  
8th Floor, Park Square  
10001 Bellamy Hill  
Edmonton, Alberta  
T5J 3B6  
Local calls: (403) 495-3027  
Toll free: 1-800-563-7828  
Fax: 1-403-495-5318

### **Southern Alberta**

Advisory Services  
Statistics Canada  
First Street Plaza, Room 401  
138-4th Avenue Southeast  
Calgary, Alberta  
T2G 4Z6  
Local calls: (403) 292-4181  
Toll free: 1-800-563-7828  
Fax: 1-403-292-4958

### **British Columbia and the Yukon**

Advisory Services  
Statistics Canada  
Sinclair Centre, Suite 440F  
757 West Hastings Street  
Vancouver, B.C. V6C 3C9  
Local calls: (604) 666-3691  
Toll free: 1-800-663-1551  
Fax: 1-604-666-4863

### **Telecommunications Device for the Hearing Impaired**

Toll free: 1-800-363-7629



1010143891

---

**MAJOR RELEASE DATES: JULY 1993**

---

(Release dates are subject to change)

Anticipated date(s) of release	Title	Reference period
<b>July</b>		
6	Estimates of Labour Income	April 1993
6	Canadian Crime Statistics	1992
6	Short-term Expectations Survey	
7	Help-wanted Index	June 1993
8	New Housing Price Index	May 1993
9	Labour Force Survey	June 1993
9	New Motor Vehicle Sales	May 1993
9	Farm Product Price Index	May 1993
12	Department Store Sales by Province and Metropolitan Area	May 1993
13	Travel Between Canada and Other Countries	May 1993
14	Canadian Leading Indicator	June 1993
15	Consumer Price Index	June 1993
16	Preliminary Statement of Canadian International Trade	May 1993
16	Monthly Survey of Manufacturing	May 1993
16	Building Permits	May 1993
19	Department Store Sales Advance Release	June 1993
19	Sales of Natural Gas	May 1993
20	Neighbourhood Income and Demographics	1991
20	Construction Union Wage Rate Index	June 1993
22	Retail Trade	May 1993
22	Canada's International Transactions in Securities	May 1993
23	Wholesale Trade	May 1993
28	Unemployment Insurance Statistics	May 1993
28	Industrial Product Price Index	June 1993
28	Raw Materials Price Index	June 1993
29	Employment, Earnings and Hours	May 1993
29	Sales of Refined Petroleum Products	June 1993
29	Crude Oil and Natural Gas	May 1993
30	Real Gross Domestic Product at Factor Cost by Industry	May 1993
30	Major Release Dates	August 1993

**User note:** This schedule can be retrieved from **CANSIM** by the command **DATES**. Contact Greg Thomson (613-951-1187), Communications Division.