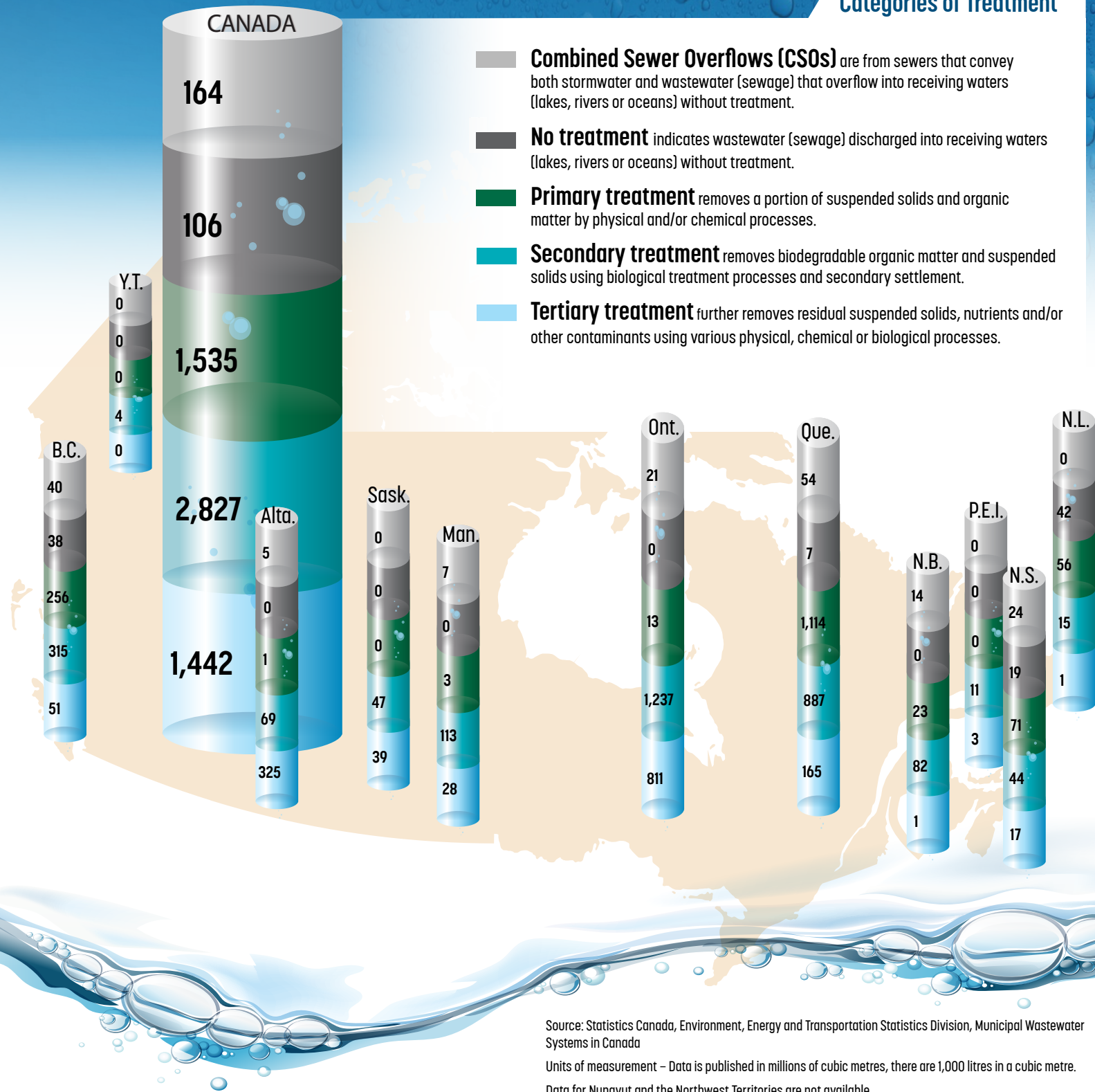


# MUNICIPAL WASTEWATER SYSTEMS IN CANADA

Volumes of provincial wastewater (sewage) discharged by treatment category, 2017 (millions of cubic metres)

## Categories of Treatment

- Combined Sewer Overflows (CSOs)** are from sewers that convey both stormwater and wastewater (sewage) that overflow into receiving waters (lakes, rivers or oceans) without treatment.
- No treatment** indicates wastewater (sewage) discharged into receiving waters (lakes, rivers or oceans) without treatment.
- Primary treatment** removes a portion of suspended solids and organic matter by physical and/or chemical processes.
- Secondary treatment** removes biodegradable organic matter and suspended solids using biological treatment processes and secondary settlement.
- Tertiary treatment** further removes residual suspended solids, nutrients and/or other contaminants using various physical, chemical or biological processes.



Source: Statistics Canada, Environment, Energy and Transportation Statistics Division, Municipal Wastewater Systems in Canada

Units of measurement – Data is published in millions of cubic metres, there are 1,000 litres in a cubic metre.

Data for Nunavut and the Northwest Territories are not available.

Catalogue number: 11-627-M  
ISBN: 978-0-660-30188-4

