

C.R. No. 16
1940.

Pu 22-002
no. 24
1940
c. 2

Authority of the Hon. James A. MacKinnon, Minister of Trade and Commerce
DOMINION BUREAU OF STATISTICS - CANADA
AGRICULTURAL BRANCH

DOES NOT CIRCULATE
NE PAS CIRCULER
\$2.00 per year.

Dominion Statistician:

R. H. Coats, LL.D., F.R.S.C.
C. F. Wilson, Ph.D.

Ottawa, August 9, 1940, 3 p.m. - The Dominion Bureau of Statistics issues today a bulletin compiled from the returns of crop correspondents giving (1) the condition of field crops on July 31, expressed numerically in percentages of the long-time average yields per acre and (2) a preliminary estimate of the production of fall wheat, fall rye and alfalfa (first cutting).

SUMMARY

The condition of the spring wheat crop in Canada at July 31, 1940, is estimated at 87 per cent of the long-time average yield per acre. Compared with the condition at June 30 this represents a reduction of 5 points, but is only 2 points below that of July 31 last year. Coarse grains in Canada declined appreciably from the June 30 condition and, with the exception of spring rye, are about the same as last year. The condition of other field crops, including peas, beans, buckwheat, potatoes, roots and sugar beets, showed little change during July and was slightly higher than a year ago. Hay and clover meadows and pastures declined slightly during the month but their condition remained considerably above that at July 31 last year.

The production of fall wheat for 1940 is estimated at 22,880,000 bushels compared with the 1939 crop of 22,271,000 bushels. While the yield per acre of fall wheat is below that of last year, an increased acreage accounts for this year's higher production. Fall rye production for the whole of Canada is estimated at 10,740,000 bushels, a decrease of 1,468,000 bushels from last year's crop, the reduction resulting from a considerably smaller acreage. The total yield of the first cutting of alfalfa in 1940 is placed at 1,839,000 tons compared with 1,534,000 tons last year.

In the Maritime Provinces the condition of field crops at July 31, 1940, for the most part showed little change from June 30. In Nova Scotia and New Brunswick some slight improvement occurred during July in the condition of most crops, while in Prince Edward Island all crops recorded small losses in condition. Hay and clover meadows and pastures slipped 2 to 4 points during July in all three provinces.

The condition of most field crops in Quebec at July 31 recorded a small improvement over the June 30 condition, with hay and clover meadows, pasture and fodder corn declining a few points during the month. Ontario crops, generally, gained a few points in condition during July and the condition of pastures registered only a small reduction. All crops, except corn, are well above last year's July 31 condition, with pastures showing the greatest gain over last year.

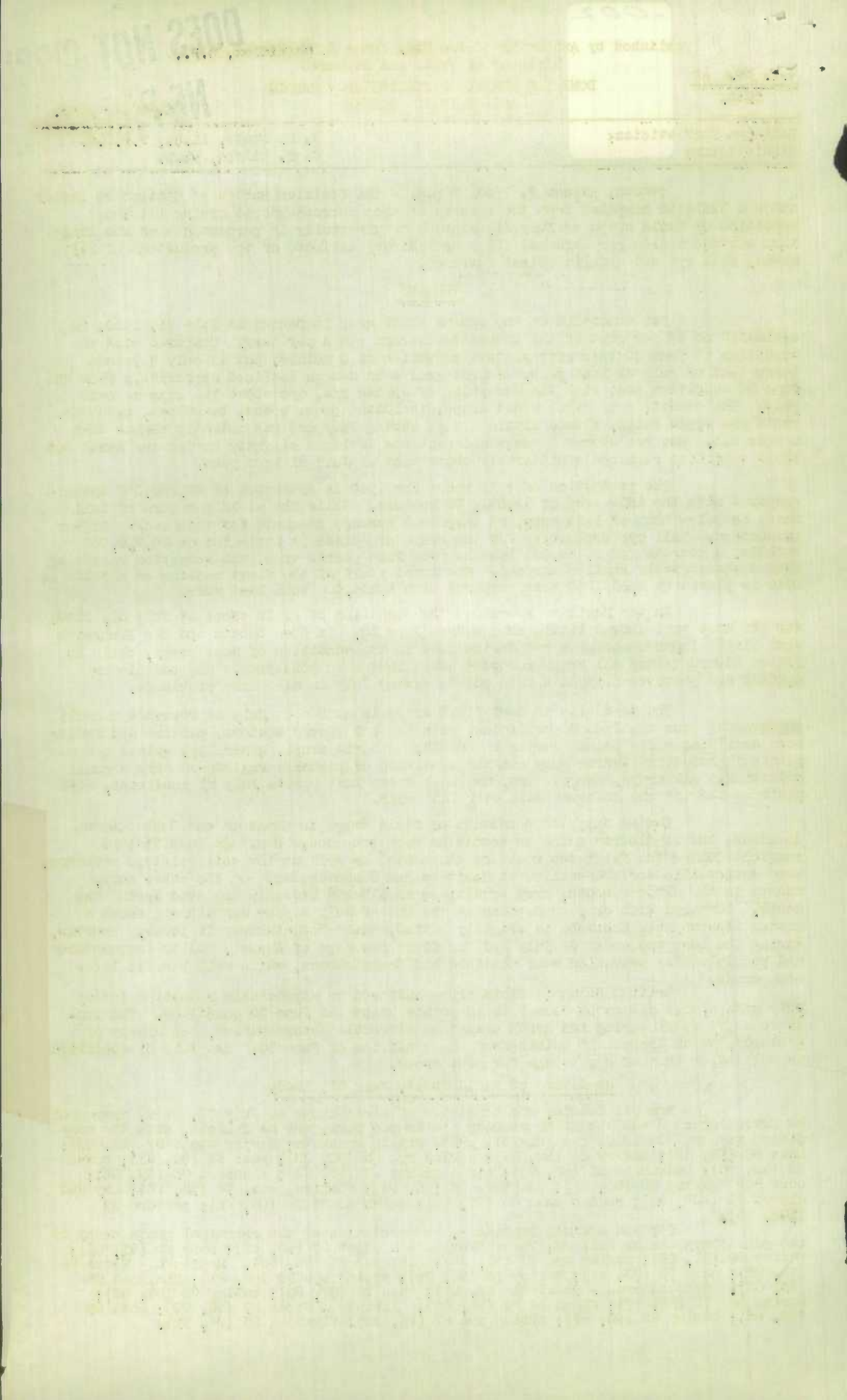
During July the condition of field crops in Manitoba and Saskatchewan declined, but in Alberta gains in condition were recorded. Heat and insufficient rainfall during the first two weeks of the month, as well as low soil moisture reserves, were responsible for the decline in Manitoba and Saskatchewan. On the other hand, except in the extreme south, crop conditions in Alberta steadily improved during the month. Compared with crop conditions at the end of July a year ago Alberta shows a marked improvement, Manitoba is slightly better, while Saskatchewan is lower. However, during the last two weeks of July and the first few days of August, cooler temperatures and precipitation prevailed over Manitoba and Saskatchewan, which will benefit late-sown crops.

British Columbia field crops suffered an appreciable reduction during July with almost all crops from 3 to 10 points below the June 30 condition. The protracted dry spell during the month caused considerable deterioration, especially of pastures, which dropped 13 points from the condition of June 30. The July 31 condition is well below that of a year ago for most crops.

Condition of Field Crops, July 31, 1940.

For all Canada, the condition of field crops at July 31, 1940, expressed as percentages of the long-time average yields per acre, was as follows, with the condition at June 30, 1940, and July 31, 1939, within brackets: Spring wheat 87 (92, 89); oats 88 (92, 87); barley 84 (92, 84); spring rye 85 (92, 93); peas 94 (94, 91); beans 92 (92, 90); buckwheat 95 (93, 93); mixed grains 97 (96, 94); flaxseed 85 (92, 85); corn for husking 83 (83, 91); potatoes 95 (94, 94); turnips, etc. 94 (93, 93); hay and clover 98 (100, 94); fodder corn 86 (87, 90); sugar beets 94 (95, 92); pasture 99 (102, 90).

For the Prairie Provinces, the condition of the principal grain crops at the same dates was as follows: Three Provinces - Wheat 87 (92, 89); oats 83 (91, 81); barley 82 (91, 82); spring rye 85 (91, 93); flaxseed 84 (92, 85). Manitoba - Wheat 86 (96, 85); oats 75 (93, 76); barley 75 (92, 76); spring rye 79 (89, 81); flaxseed 86 (93, 83). Saskatchewan - Wheat 81 (89, 89); oats 74 (87, 80); barley 73 (87, 83); spring rye 79 (89, 97); flaxseed 81 (91, 84). Alberta - Wheat 99 (96, 90); oats 99 (95, 86); barley 99 (95, 87); spring rye 97 (96, 93); flaxseed 96 (94, 91).



PRODUCTION OF FALL WHEAT, FALL RYE AND ALFALFA

The first estimate places the production of fall wheat in Canada in 1940 at 22,880,000 bushels from 775,400 acres, a yield per acre of 29.5 bushels, as compared with 22,271,000 bushels from 735,000 acres in 1939, a yield per acre of 30.3 bushels.

Fall rye in Canada in 1940 is estimated to have yielded 10,710,000 bushels from 765,600 acres, as compared with 12,178,000 bushels from 890,800 acres in 1939, yields per acre of 13.6 and 13.7 bushels respectively.

The first cutting of alfalfayielded 1,839,000 tons from 986,500 acres in 1940, a yield per acre of 1.86 tons, as compared with 1,534,000 tons from 946,900 acres or 1.62 tons per acre in 1939.

CHARTS SHOWING THE CONDITION OF SPRING WHEAT IN THE PRAIRIE PROVINCES

AT JULY 31, AND JUNE 30, 1940, AND JULY 31, 1939.

On the last three pages of this report the charts picture the condition of spring wheat in the Prairie Provinces on the above-mentioned dates. The patterns for the same ranges are identical, facilitating direct comparisons between the charts.

The expected decline in the condition figure for spring wheat in the Prairie Provinces occurred between the end of June and the end of July. The condition reported was 87 per cent of the long-time average yield as compared with 92 per cent at the end of June and 89 per cent at the end of July a year ago. High temperatures in the first two weeks of July and insufficient precipitation to maintain the crop prospects caused the decline of 5 points. The condition figures for Manitoba and Alberta were 1 point and 9 points higher than at the same date a year ago, while in Saskatchewan the crop condition was 8 points lower. During July the greatest decline occurred in Manitoba, chiefly in some of the central areas of the province and along the western boundary. In Saskatchewan, districts in the south-central region suffered the most. In these areas the stubble crop, lacking soil moisture reserves shows prospect of complete failure or only light yields, but summer-fallow fields withstood the heat and will give fair returns. In Alberta, declines in the southern part of the province were more than offset by gains in the central and northern sections and crop prospects improved by 3 points.

Manitoba

The provincial condition figure of 86 at the end of July showed an appreciable decline from the condition figure of 96 reported for the wheat crop at the end of June, although it was one point higher than the July condition figure of a year ago. With the exception of District 5 in north-eastern Manitoba where the condition was maintained during the month, all other sections of the province showed declines. Heavy loss in condition occurred in the districts along the western boundary and in Districts 3, 8 and 12 in the central part of Manitoba.

Saskatchewan

A decline of 8 points in the condition of the wheat crop during the month carried the condition figure from 89 at the end of June to 81 at the end of July. A very sharp drop in condition occurred in the south section of the province, including the Regina-Weyburn area. In the south-western section, improvement took place in Districts 3BS and 4B. Marked improvement and the best crop prospects are reported from District 7A in west-central Saskatchewan. Declines in crop conditions in the north-central districts were slight.

Alberta

The condition of the wheat crop in Alberta at July 1, 1940, was 99, registering a 3 point gain over the June 30 condition figure of 96, and exceeding last year's July 31 condition by 9 points. Appreciable reductions in condition occurred in Districts 1 and 2 in the south as a result of inadequate moisture supplies during the first three weeks of July and continued grasshopper infestation. In the central and northern districts improvement in condition during the month resulted from generous rainfall and moderate temperatures. Districts 4, 5, 6, 12, 14 and 16 showed good gains over the June 30 condition, while slight losses of 1 point occurred in Districts 11 and 17.

1.- Condition of Field Crops at July 31, 1940, as compared with May 31, and June 30, 1940 and with July 31, 1939. (100 = long-time average yield per acre).

Province and crop	July 31 1939	May 31 1940	June 30 1940	July 31 1940	Province and crop	July 31 1939	May 31 1940	June 30 1940	July 31 1940
P.c.	P.c.	P.c.	P.c.	P.c.	P.c.	P.c.	P.c.	P.c.	P.c.
<u>Canada -</u>					<u>Ontario -</u>				
Spring wheat	89	96	92	87	Spring wheat	89	88	95	96
Oats	87	92	92	88	Oats	91	89	95	98
Barley	84	91	92	84	Barley	92	89	93	94
Spring rye	93	93	92	85	Peas	87	89	93	92
Peas	91	91	94	93	Beans	89	-	92	92
Beans	90	-	92	92	Buckwheat	87	-	91	95
Buckwheat	93	-	93	95	Mixed grains	93	91	96	98
Mixed grains	94	92	96	97	Flaxseed	90	-	91	95
Flaxseed	85	-	92	85	Corn, husking	91	-	83	83
Corn, husking	91	-	83	83	Potatoes	89	-	91	93
Potatoes	94	-	94	95	Turnips, etc.	90	-	90	94
Turnips, etc.	93	-	93	94	Hay and clover	91	101	104	105
Hay and clover	94	99	100	98	Fodder corn	91	-	85	85
Fodder corn	90	-	87	86	Sugar beets	95	-	96	98
Sugar beets	92	-	95	94	Pasture	75	99	107	104
Pasture	90	98	102	99	<u>Manitoba -</u>				
<u>P. E. Island -</u>					Spring wheat	85	98	96	86
Spring wheat	97	101	97	99	Oats	76	92	93	75
Oats	98	100	100	99	Barley	76	91	92	75
Barley	97	99	100	98	Spring rye	81	90	89	79
Buckwheat	91	-	100	92	Peas	89	90	90	87
Mixed grains	99	99	100	97	Buckwheat	76	-	81	72
Potatoes	100	-	100	97	Mixed grains	82	91	92	80
Turnips, etc.	96	-	100	96	Flaxseed	83	-	93	86
Hay and clover	82	102	102	99	Potatoes	84	-	86	85
Fodder corn	95	-	100	96	Turnips, etc.	82	-	89	82
Pasture	89	101	105	101	Hay and clover	79	79	82	67
<u>Nova Scotia -</u>					Fodder corn	84	-	87	84
Spring wheat	94	94	97	96	Sugar beets	-	-	91	82
Oats	99	98	97	100	Pasture	76	80	88	75
Barley	98	95	96	99	<u>Saskatchewan -</u>				
Buckwheat	98	-	96	95	Spring wheat	89	94	89	81
Mixed grains	99	96	95	98	Oats	80	89	87	74
Potatoes	100	-	97	97	Barley	83	88	87	73
Turnips, etc.	98	-	96	97	Spring rye	97	91	89	79
Hay and clover	92	100	104	102	Mixed grains	83	91	88	74
Fodder corn	97	--	93	94	Flaxseed	84	-	91	81
Pasture	96	97	103	99	Potatoes	87	-	92	90
<u>New Brunswick -</u>					Turnips, etc.	80	-	91	88
Spring wheat	101	93	94	96	Hay and clover	94	82	84	76
Oats	102	96	95	97	Fodder corn	79	-	92	86
Barley	99	97	95	97	Pasture	101	82	88	82
Beans	98	-	94	94	<u>Alberta -</u>				
Buckwheat	99	-	95	97	Spring wheat	90	98	96	99
Mixed grains	99	97	96	99	Oats	86	95	95	99
Potatoes	100	-	95	100	Barley	87	95	95	99
Turnips, etc.	99	-	96	97	Spring rye	93	97	96	97
Hay and clover	92	101	100	98	Peas	92	95	99	100
Fodder corn	95	-	95	93	Beans	90	-	94	97
Pasture	96	98	102	99	Mixed grains	87	94	94	99
<u>Quebec -</u>					Flaxseed	91	-	94	96
Spring wheat	99	95	95	96	Potatoes	91	-	97	103
Oats	102	96	93	95	Turnips, etc.	91	-	97	100
Barley	101	97	93	95	Hay and clover	91	100	100	100
Spring rye	99	97	96	97	Fodder corn	92	-	94	92
Peas	99	96	95	96	Sugar beets	86	-	96	95
Beans	99	-	91	94	Pasture	91	101	101	103
Buckwheat	100	-	95	95	<u>British Columbia -</u>				
Mixed grains	101	97	94	96	Spring wheat	100	101	96	91
Flaxseed	100	-	94	97	Oats	101	101	96	89
Potatoes	100	-	97	99	Barley	99	100	95	89
Turnips, etc.	98	-	95	97	Spring rye	103	100	99	90
Hay and clover	100	100	99	98	Peas	97	100	96	92
Fodder corn	97	-	93	89	Beans	95	-	97	100
Pasture	101	100	101	98	Mixed grains	103	100	99	96
					Flaxseed	92	-	100	100
					Potatoes	100	-	97	92
					Turnips, etc.	100	-	94	87
					Hay and clover	102	104	100	90
					Fodder corn	93	-	100	95
					Pasture	99	104	96	83

CONDITION OF SPRING WHEAT IN THE PRAIRIE PROVINCES BY CROP DISTRICTS

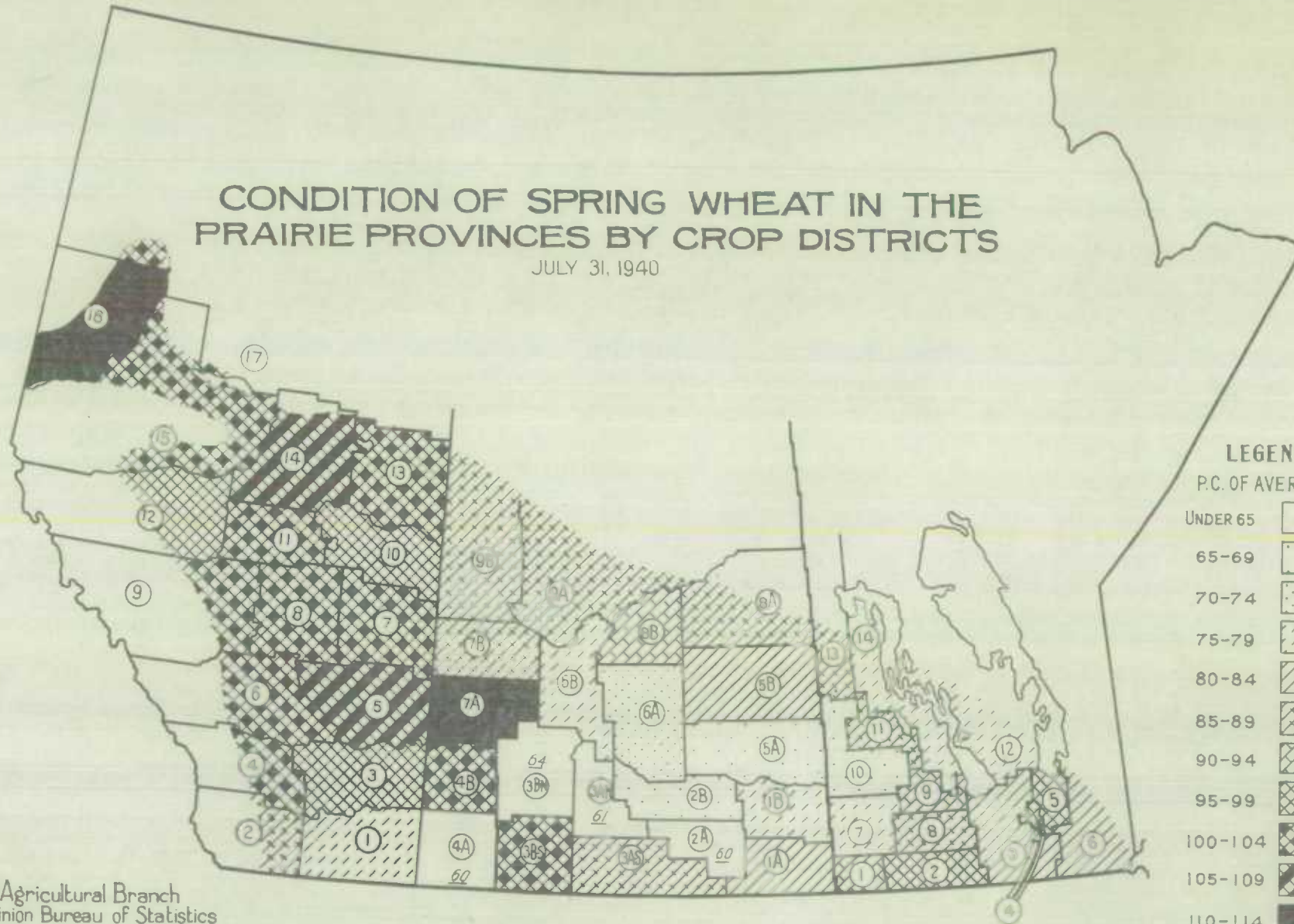
JULY 31, 1940

Agricultural Branch
Dominion Bureau of Statistics

LEGEND

P.C. OF AVERAGE

UNDER 65	
65-69	
70-74	
75-79	
80-84	
85-89	
90-94	
95-99	
100-104	
105-109	
110-114	



12345

10

10

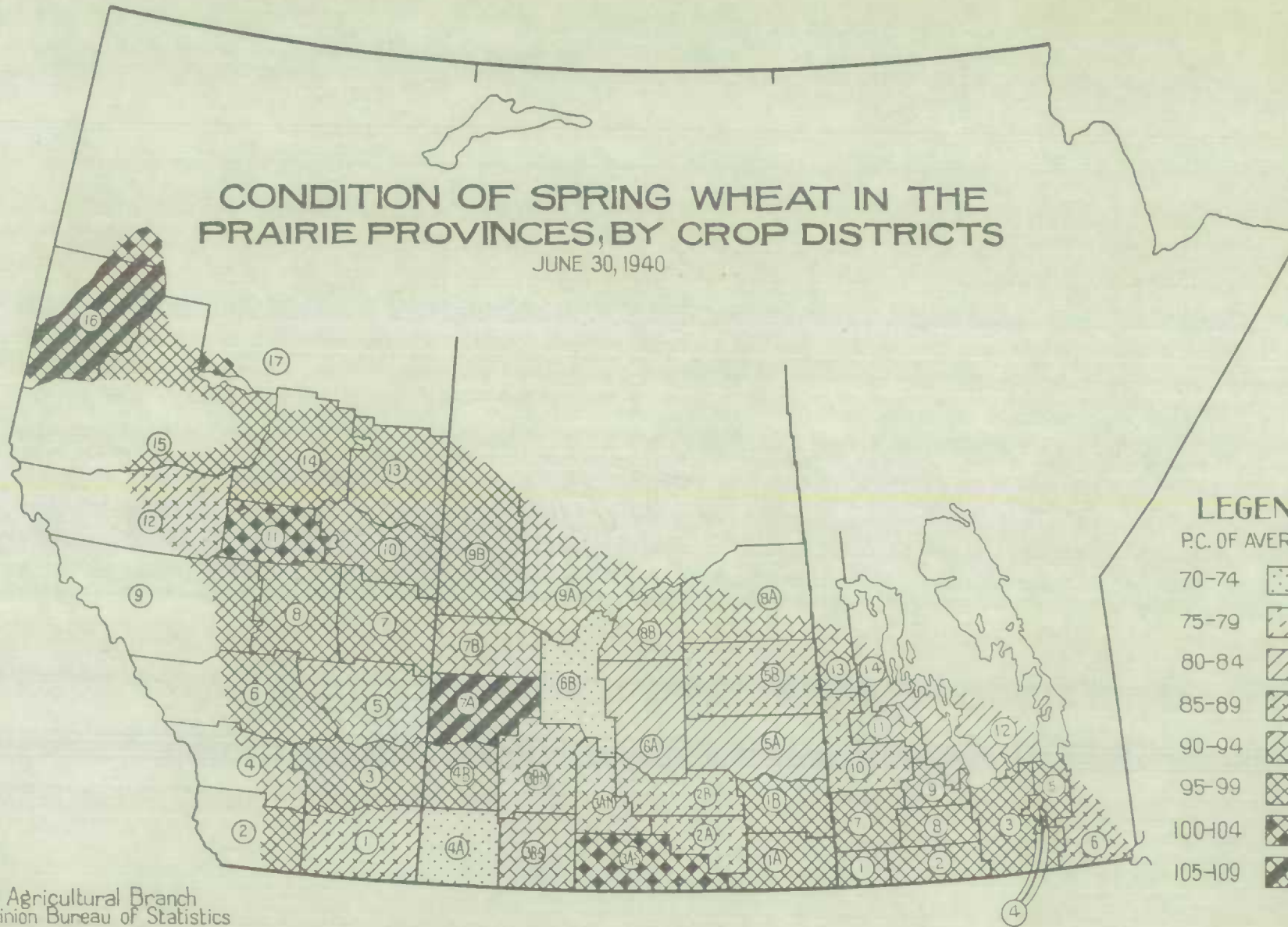
10

10

10

CONDITION OF SPRING WHEAT IN THE PRAIRIE PROVINCES, BY CROP DISTRICTS

JUNE 30, 1940

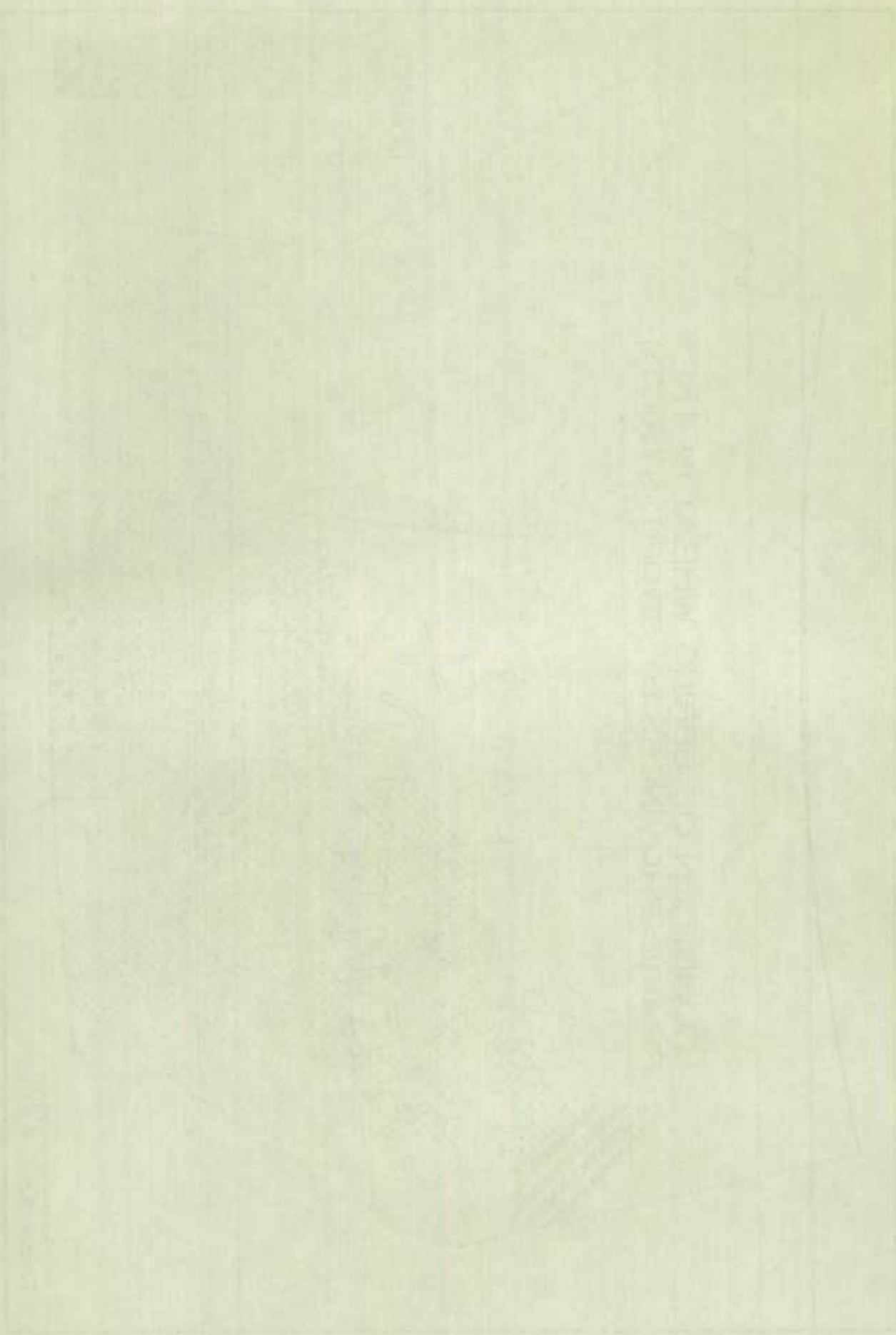


LEGEND

P.C. OF AVERAGE

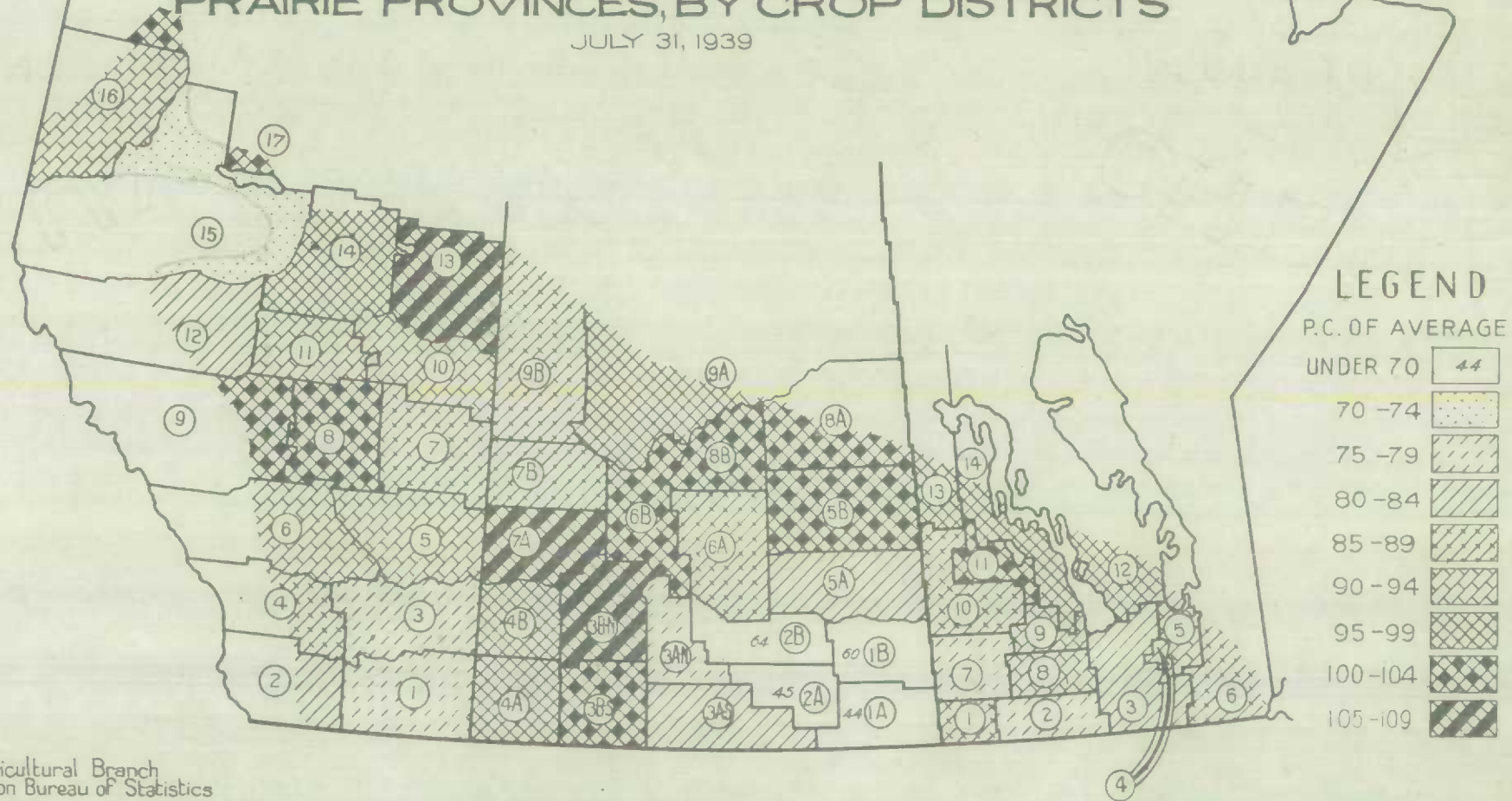
70-74	
75-79	
80-84	
85-89	
90-94	
95-99	
100-104	
105-109	

Agricultural Branch
Dominion Bureau of Statistics



CONDITION OF SPRING WHEAT IN THE PRAIRIE PROVINCES, BY CROP DISTRICTS

JULY 31, 1939



Agricultural Branch
Dominion Bureau of Statistics

STATISTICS CANADA LIBRARY
BIBLIOTHÈQUE STATISTIQUE CANADA



1010525562

