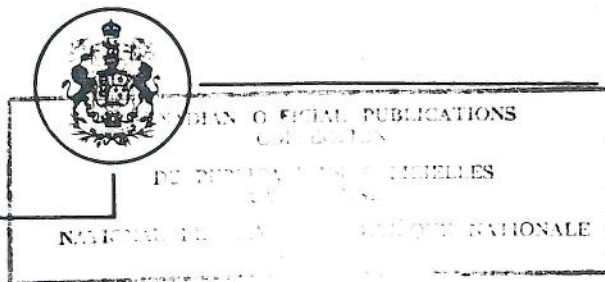


31-D-01

DOMINION BUREAU OF STATISTICS
OTTAWA - CANADA

Published by Authority of the Rt. Hon. C. D. Howe, Minister of Trade and Commerce



31-D-01/1-1

Vol. 1-No. 5

April 1955

Price 25¢ per copy

ESTIMATED VALUE OF MANUFACTURERS' SHIPMENTS,
FOURTH QUARTER 1954

The basis trend data used in making the estimates included in this report are the values of monthly sales, or shipments, as reported by a sample of manufacturing establishments. In industries where long-term contracts involve the receipt of progress payments, all such payments are treated as sales. In addition, a limited number of industries are incorporated by other means. The trend established for each industry is applied to the gross value of shipments universe for the industry available from the Annual Census of Industry Survey.

The estimates are shown by the 17 major industrial groups, and not by individual industries. They are shown, also, by economic use groupings, into which individual industries have been assigned in total. In both presentations, data for 1952 and 1953 are included to provide a measure of change.

In the current release, estimates for the four quarters, 1953, and for the four quarters, 1954 have been adjusted to 1953 levels established by a preliminary tabulation of the Annual Census of Industry Survey for 1953. The revised totals show that the value of manufacturers shipments for the year 1954 totalled \$17,305,643,000.

Prepared in the Special Projects Unit, Industry and Merchandising Division.

6501-701-124



ESTIMATED VALUE OF MANUFACTURERS' SHIPMENTS,

FOURTH QUARTER 1954

(A) By Industrial Groups

Groups of Industries		1st	2nd	3rd	4th	Total
		Quarter	Quarter	Quarter	Quarter	
		(\$'000)	(\$'000)	(\$'000)	(\$'000)	(\$'000)
1. Foods and Beverages	1952	788,337	893,120	878,021	900,958	3,460,436
	1953	776,900	884,118	902,983	927,302	3,491,303
	1954	829,377	923,943	917,330	948,759	3,619,409
2. Tobacco and Tobacco Products	1952	46,851	59,133	50,057	51,302	207,343
	1953	48,641	56,064	53,421	56,906	215,032
	1954	50,567	57,938	52,475	60,390	221,370
3. Rubber Products	1952	71,217	74,417	74,177	71,239	291,050
	1953	67,468	76,942	72,962	66,173	283,545
	1954	64,263	68,745	68,854	67,447	269,309
4. Leather Products	1952	56,317	53,435	55,057	54,392	219,201
	1953	63,416	58,464	54,709	45,821	222,410
	1954	59,500	51,388	54,390	45,068	210,346
5. Textile Products (except clothing)	1952	203,077	176,933	182,535	192,323	754,798
	1953	199,509	179,111	165,221	156,849	700,690
	1954	159,986	156,679	155,235	165,031	636,931
6. Clothing	1952	201,848	197,840	215,892	237,570	853,150
	1953	229,066	198,105	226,193	204,617	857,981
	1954	207,093	176,079	208,629	204,430	796,231
7. Wood Products	1952	254,168	295,800	336,421	273,624	1,160,013
	1953	292,863	340,659	350,623	264,154	1,248,299
	1954	273,093	316,875	372,570	290,927	1,253,465
8. Paper Products	1952	383,911	367,979	368,172	382,773	1,502,835
	1953	368,541	401,348	395,003	406,844	1,571,736
	1954	386,560	415,395	408,692	423,814	1,634,461
9. Printing and Publishing	1952	119,218	122,928	123,254	125,535	490,935
	1953	128,383	136,201	136,862	141,697	543,143
	1954	142,628	144,885	146,567	148,946	583,026
10. Iron and Steel Products	1952	509,887	566,187	530,660	528,025	2,134,759
	1953	519,836	568,670	524,587	486,011	2,099,104
	1954	450,886	504,402	492,344	456,933	1,904,565

ESTIMATED VALUE OF MANUFACTURERS' SHIPMENTS

FOURTH QUARTER 1954

(A) By Industrial Groups (Concl'd)

Groups of Industries		1st	2nd	3rd	4th	Total
		Quarter	Quarter	Quarter	Quarter	
		(\$'000)	(\$'000)	(\$'000)	(\$'000)	(\$'000)
11. Transportation	1952	400,146	498,682	420,380	481,534	1,800,742
	1953	529,852	622,639	479,366	457,579	2,089,436
	1954	540,346	498,373	327,041	350,079	1,715,839
12. Non-Ferrous Metal	1952	318,461	317,071	277,421	298,008	1,210,961
	1953	314,723	335,182	298,249	291,981	1,240,135
	1954	258,601	310,558	283,978	300,917	1,154,054
13. Electrical Apparatus and Supplies	1952	152,421	168,669	167,338	203,691	692,119
	1953	204,487	220,848	196,027	226,828	848,190
	1954	208,064	219,336	207,562	257,548	892,510
14. Non-Metallic Mineral Products	1952	70,514	95,274	94,065	90,425	350,278
	1953	81,775	112,244	112,261	102,629	408,909
	1954	79,367	111,472	118,111	97,506	406,456
15. Products of Petroleum and Coal	1952	180,461	195,625	203,443	208,140	787,669
	1953	180,584	193,655	217,830	216,261	808,330
	1954	200,710	201,194	214,639	227,966	844,509
16. Chemicals and Allied Products	1952	193,270	214,628	191,078	198,154	797,130
	1953	223,083	245,197	206,662	206,562	881,504
	1954	220,228	247,450	215,476	217,997	901,151
17. Miscellaneous Industries	1952	57,162	56,867	54,725	57,102	225,856
	1953	60,941	67,865	65,766	66,711	261,283
	1954	60,167	64,007	69,434	68,403	262,011
Total All Industries	1952	4,007,196	4,354,588	4,222,696	4,354,795	16,939,275
	1953	4,290,068	4,697,312	4,458,725	4,324,925	17,771,030
	1954	4,191,436	4,468,719	4,313,327	4,332,161	17,305,643

ESTIMATED VALUE OF MANUFACTURERS' SHIPMENTS

FOURTH QUARTER 1954

(B) By Economic Use Groups (x)

Groups of Industries		1st	2nd	3rd	4th	Total
		Quarter	Quarter	Quarter	Quarter	
		(\$'000)	(\$'000)	(\$'000)	(\$'000)	(\$'000)
Consumers' Goods	1952	2,466,603	2,657,595	2,600,185	2,718,440	10,442,823
	1953	2,601,172	2,807,945	2,715,753	2,707,161	10,832,031
	1954	2,644,881	2,714,683	2,625,200	2,739,344	10,724,108
Non-Durable	1952	1,501,884	1,626,977	1,612,525	1,647,215	6,388,601
	1953	1,490,603	1,654,357	1,693,231	1,731,609	6,569,800
	1954	1,600,223	1,731,283	1,733,540	1,795,180	6,860,226
Semi-Durable	1952	571,244	541,797	563,421	602,827	2,279,289
	1953	597,707	554,990	558,177	516,050	2,226,924
	1954	526,577	490,857	526,141	523,234	2,066,809
Durable	1952	393,475	488,821	424,239	468,398	1,774,933
	1953	512,862	598,598	464,345	459,502	2,035,307
	1954	518,081	492,543	365,519	420,930	1,797,073
Producers' Goods	1952	837,843	861,634	811,815	841,639	3,352,931
	1953	859,642	933,609	860,924	839,597	3,493,772
	1954	769,479	881,255	835,145	839,838	3,325,717
Capital Goods	1952	419,404	485,994	430,611	492,732	1,828,741
	1953	505,952	560,930	472,739	480,850	2,020,471
	1954	480,300	505,259	425,198	427,446	1,838,203
Construction Goods	1952	283,346	349,365	380,085	301,984	1,314,780
	1953	323,302	394,828	409,309	297,317	1,424,756
	1954	296,776	367,522	427,784	325,533	1,417,615
Total, All Groups	1952	4,007,196	4,354,588	4,222,696	4,354,795	16,939,275
	1953	4,290,068	4,697,312	4,458,725	4,324,925	17,771,030
	1954	4,191,436	4,468,719	4,313,327	4,332,161	17,305,643

(x) Industries are assigned in Total into specific groups.