

32-223

02

PROPERTY OF STATISTICS STATISTIQUE  
CANADA CANADA

Rec'd. JUN 6 1929 AUG 16 2010

DOMINION BUREAU OF STATISTICS  
LIBRARY  
BIBLIOTHÈQUE

CANADA  
DEPARTMENT OF TRADE AND COMMERCE  
DOMINION BUREAU OF STATISTICS  
CENSUS OF INDUSTRY

REPORT  
on the  
LINSEED OIL INDUSTRY  
in  
CANADA  
1928

Published by Authority of the Hon. James Malcolm, M.P.,  
Minister of Trade and Commerce

♦ ♦ ♦

OTTAWA

1929

1991-92

STATISTICAL SERVICE  
CANADA

STATISTICAL SERVICE

STATISTICAL SERVICE

STATISTICAL SERVICE

STATISTICAL SERVICE

STATISTICAL SERVICE

APPENDIX

---

Firms engaged in the Linseed Oil Industry in Canada

1928.

---

Canada Linseed Oil Mills, Ltd.,	2210 Notre Dame St.E.Montreal,Que.
Dominion Linseed Oil Co. Ltd.	31 Mill St. " "
Sherwin-Williams Co. of Canada, Ltd.	897 Centre St. " "
Dominion Linseed Oil Co. Ltd.,	Baden, Ontario.
Canada Linseed Oil Mills, Ltd.	40 Wabash Avenue, Toronto 3, Ont.
Dominion Linseed Oil Co. Ltd.	St. Boniface, Manitoba
Sherwin-Williams Co. of Canada, Ltd.,	110 Sutherland St. Winnipeg, Manitoba.
Alberta Linseed Oil Co. Ltd.,	Medicine Hat, Alberta.



Report of the United States Oil Industry in 1948

1948

Oil, Natural Gas, and Coal  
 Production and Consumption  
 in the United States  
 1948

Oil, Natural Gas, and Coal  
 Production and Consumption  
 in the United States  
 1948

## DEPARTMENT OF TRADE AND COMMERCE

## DOMINION BUREAU OF STATISTICS

## CENSUS OF INDUSTRY

OTTAWA, CANADA

Dominion Statistician: R. H. Coats, B.A., F.S.S., (Hon.), F.R.S.C.  
 Chief, Census of Industry: J. C. Macpherson.

REPORT ON THE LINSEED OIL INDUSTRY IN CANADA, 1928

Ottawa, May, 1929. The statistics of the Linseed Oil Industry in Canada for the calendar year 1928 are presented in this report. The number of individual plants operating during the year was 8 located by provinces as follows: Quebec 3, Ontario 2, Manitoba 2, and Alberta 1. In order that information relating to individual plants may not be disclosed the statistics by provinces are omitted and only those for the Dominion given throughout the tables of this report.

Principal Statistics

A comparative summary of the principal statistics of the industry is presented in Table 1, for the calendar years 1927 and 1928.

Table 1. Principal Statistics compared 1927 and 1928.

Items		1928	1927
Establishments reporting	No.	8	8
Capital Investment	\$	2,394,331	2,341,733
Employees on salaries-			
Male	No.	32	28
Female	No.	5	5
Total salaries	\$	90,267	87,659
Employees on wages -			
Male	No.	197	205
Female	No.	1	1
Total wages	\$	232,304	220,943
Cost of fuel and electricity	\$	59,815	65,905
Power equipment			
Units	No.	116	106
H.P. capacity	H.P.	1,997	1,850
Cost of materials	\$	5,514,568	4,840,168
Gross value of products	\$	6,281,055	5,839,314
Net value of products	\$	766,487	999,146

Production Statistics, 1928.

The quantity and the selling value at the mill or factory of the various commodities manufactured in the Dominion during the calendar years 1927 and 1928 are shown in Table 2. Increases occurred in the quantity of Linseed Oil, boiled and raw, refined special oils and oil cake meal, whilst oil cake alone shows a decrease as in the summary table below.

Products		1927	1928	+ Increase - Decrease
Linseed oil, raw	Imp. Gals.	3,112,520	3,388,583	+ 276,063
Linseed oil, boiled	" "	1,062,985	1,067,770	+ 4,785
Oil cake	tons	5,988	4,714	- 1,274
Oil cake meal	"	35,349	42,192	+ 6,843
Special refined oils	Imp. Gals.	691,837	754,258	+ 62,421





# Size of Establishments, 1928

In view of the tendency towards concentration in industrial enterprises, a series of tables has been prepared presenting in a threefold way the size of establishments in the industry measured by (a) capital investment, (b) gross value of production and (c) employment, all within certain specified groups or limitations for the calendar year 1927 and 1928. The tables further indicate the movement of capital, production and employment within the industry.

In 1928, the number of establishments reporting was 8, with a total capital investment of \$2,394,331, a total gross value of production of \$6,281,055 and a total employment of 235. Of the total number of establishments 6 had a capital investment of \$2,218,097 or 92.7 per cent of the total investment and an average investment of \$369,683 per establishment; 6 establishments had a gross value of production amounting to \$5,435,687 or 86.5 per cent of the total production and an average production of \$905,948 per establishment. In employment 7 establishments had 220 persons on their payroll or 93.7 per cent of the total number employed and an average employment of 31 per establishment.

In 1927, the number of establishments reporting was 8 with a total capital investment of \$2,341,733, a total gross value of production of \$5,839,314 and a total employment of 239. Of the total number of establishments 6 had a capital investment of \$2,167,154 or 92.54 per cent of the total investment with an average investment of \$361,192 per establishment. In gross value of production 6 establishments had a total production of \$5,190,050 or 88.88 per cent of the total for the industry and an average production of \$865,008 per establishment. In employment 7 establishments had a total payroll of 225 or 94.13 per cent of the total number employed and an average employment of 32 per establishment.

## (a) Capital invested in establishments grouped according to value, 1927 and 1928

Groups of value of capital	1928			1927		
	Estab-lish-ments	Capital invested	Average capital	Estab-lish-ments	Capital invested	Average capital
	No.	\$	\$	No.	\$	\$
Under \$200,000	2	176,234	88,117	2	174,579	87,289
\$200,000 and over	6	2,218,097	369,683	6	2,167,154	361,192
TOTAL	8	2,394,331	299,291	8	2,341,733	292,716

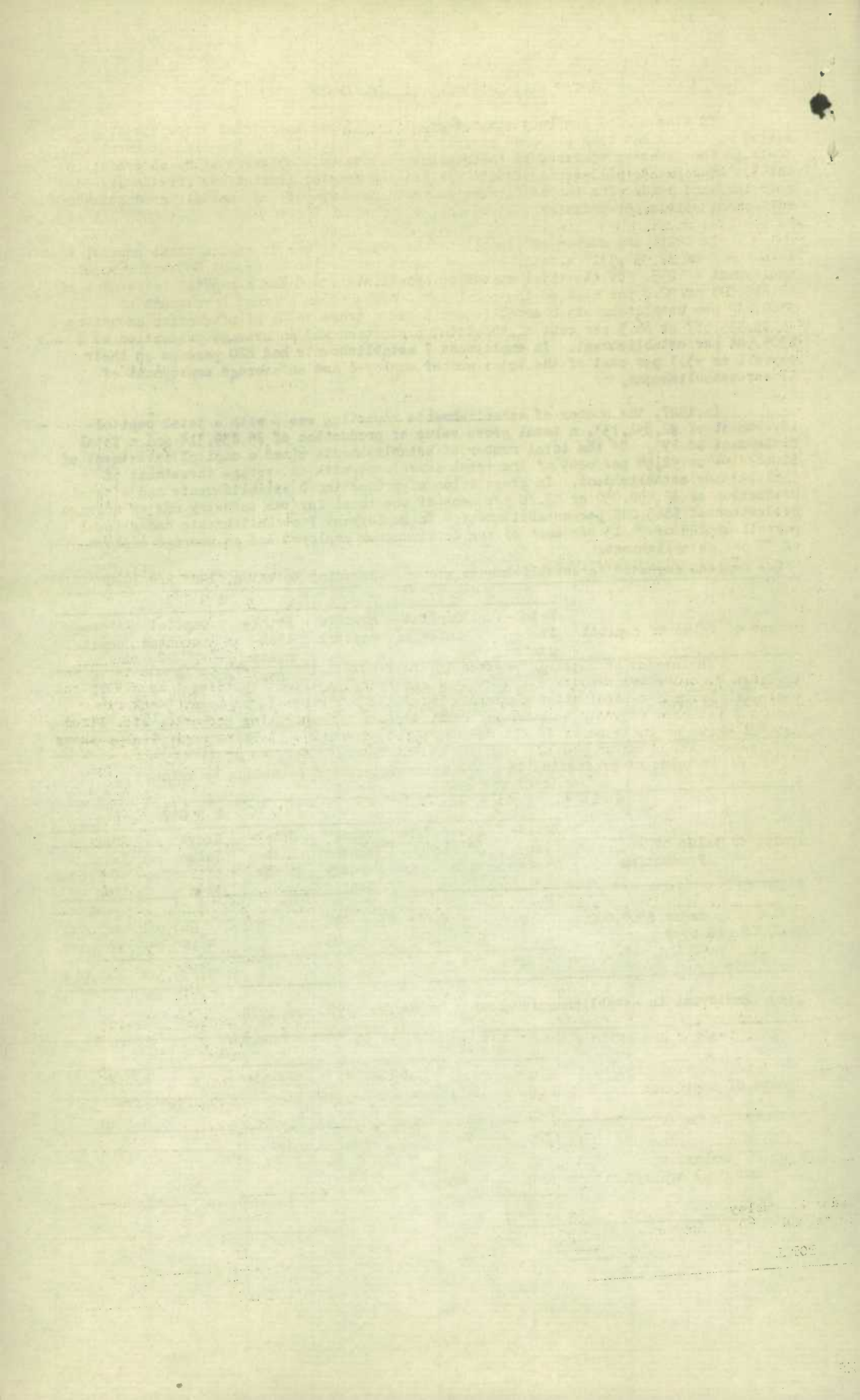
## (b) Gross value of production in establishments grouped according to value, 1927 and 1928

Groups of value of Production	1928			1927		
	Estab-lish-ments	Gross Value of Produc-tion	Average Value of Produc-tion	Estab-lish-ments	Gross Value of Produc-tion	Average Value of Produc-tion
	No.	\$	\$	No.	\$	\$
\$200,000 to under \$500,000	2	845,368	422,684	2	649,264	324,632
\$500,000 and over	6	5,435,687	905,948	6	5,190,050	865,008
TOTAL	8	6,281,055	785,132	8	5,839,314	729,914

## (c) Employees in establishments grouped by number, 1927 and 1928

Groups of employees	1928			1927		
	Estab-lish-ments	Total Employees	Average Employees	Estab-lish-ments	Total Employees	Average Employees
	No.	No.	No.	No.	No.	No.
Under 20 employees	1	15	15	1	14	14
20 to under 60 employees	7	220	31	7	225	32
TOTAL	8	235	29	8	239	30







REPORT ON THE LINSEED OIL IN CANADA, 1928.

Production Statistics - Cont'd.

When values of production are compared increases appear in raw linseed oil of (\$153,746) oil cake meal of (\$288,512) refined and special oils of (\$68,814). The only items of production showing decreases in value were oil cake amounting to \$60,455 and linseed oil, boiled of (\$25,941). The net increase in production over 1927 amounted to \$441,741 inclusive of by-products amounting to \$17,068.

Table 2. Production, by Quantity and Value, 1928.

Classes of Products	Unit of Measure	Quantity	Selling Value at Mill
Linseed oil, raw	Imp. Gal.	3,388,583	\$ 2,689,551
Linseed oil, boiled	" "	1,067,770	842,283
Refined and special oils	" "	754,258	678,109
Oil cake	Ton	4,714	198,214
Oil cake meal	"	42,192	1,855,833
All other products	-	-	17,065
Total value of products	-	-	6,281,055

Capital Investment

The amount of capital invested in the linseed oil industry in Canada is shown in Table 3, under two heads:- Fixed capital which includes land, buildings, machinery and tools and working capital which comprises materials and supplies on hand, stocks in process, finished products on hand and cash, trading and operating accounts, etc. Fixed capital shows an increase of \$6,271 when compared with 1927. Working capital also shows an increase amounting to \$46,327 over the amount reported for the previous year.

Table 3. Capital invested, by Provinces, 1928.

Items of Capital	Canada	Quebec	Other Provinces
	\$	\$	\$
Fixed capital -			
Lands, building etc. )	1,345,137	680,723	664,414
Machinery and tools )			
Working capital -			
Materials and stocks on hand	676,313	331,380	344,933
Cash, trading and operating accounts, etc.	372,881	166,847	206,034
Total working capital	1,049,194	498,227	550,967
Grand Total of Capital	2,394,331	1,178,950	1,215,381

LANDS BELONGING TO THE UNITED STATES

For the year ending June 30, 1891

By the Commissioner of the General Land Office

Washington, D. C.

Printed by the Government Printing Office

For sale by the Superintendent of the General Land Office

Price, per copy, 10 cents

For a full and complete description of the lands belonging to the United States, and of the manner in which they are managed, see the report of the Commissioner of the General Land Office for the year ending June 30, 1891.

The report of the Commissioner of the General Land Office for the year ending June 30, 1891, is published in the form of a book, and is for sale by the Superintendent of the General Land Office.

The report of the Commissioner of the General Land Office for the year ending June 30, 1891, is published in the form of a book, and is for sale by the Superintendent of the General Land Office.

The report of the Commissioner of the General Land Office for the year ending June 30, 1891, is published in the form of a book, and is for sale by the Superintendent of the General Land Office.

The report of the Commissioner of the General Land Office for the year ending June 30, 1891, is published in the form of a book, and is for sale by the Superintendent of the General Land Office.

The report of the Commissioner of the General Land Office for the year ending June 30, 1891, is published in the form of a book, and is for sale by the Superintendent of the General Land Office.

The report of the Commissioner of the General Land Office for the year ending June 30, 1891, is published in the form of a book, and is for sale by the Superintendent of the General Land Office.

The report of the Commissioner of the General Land Office for the year ending June 30, 1891, is published in the form of a book, and is for sale by the Superintendent of the General Land Office.

The report of the Commissioner of the General Land Office for the year ending June 30, 1891, is published in the form of a book, and is for sale by the Superintendent of the General Land Office.

The report of the Commissioner of the General Land Office for the year ending June 30, 1891, is published in the form of a book, and is for sale by the Superintendent of the General Land Office.

The report of the Commissioner of the General Land Office for the year ending June 30, 1891, is published in the form of a book, and is for sale by the Superintendent of the General Land Office.

The report of the Commissioner of the General Land Office for the year ending June 30, 1891, is published in the form of a book, and is for sale by the Superintendent of the General Land Office.

The report of the Commissioner of the General Land Office for the year ending June 30, 1891, is published in the form of a book, and is for sale by the Superintendent of the General Land Office.



- 4 -  
REPORT ON THE LINSEED OIL IN CANADA, 1928.

Employment Statistics

Statistics of employment for the calendar year 1928 are shown under the three following heads:- (a) Employees by sex and remuneration; (b) employees by months and (c) working time of plants and employees. Table 4 presents statistics of employment by classes sex and remuneration by provinces. Compared with 1927 there was a decrease in the total number employed in the industry of 4 but an increase of \$14,169 in the payments for salaries and wages.

Table 4. Employees, Salaries and Wages, by Provinces, 1928.

Classes of employees by sex		Canada	Quebec	Other Provinces
Salaried employees -				
Male	No.	32	12	20
Female	No.	5	1	4
Total salaries	\$	90,267	49,301	40,966
Employees on wages, average No.-				
Male	No.	197	98	99
Female	No.	1	1	-
Total wages	\$	232,504	117,368	115,136
Total male employees	No.	229	110	119
Total female employees	No.	6	2	4
Total salaries and wages	\$	322,771	166,669	156,102

Employment by months; - The number of persons entered on the payroll during each month of the year is shown by sex in Table 5. The months of highest employment were November and December, and those of lowest employment July to September. The average monthly employment was 198 of which males numbered 197 and females 1. This represents a decrease in the monthly average employment of 8 when compared with 1927.

Table 5. Employment by Months, 1928.

Months	No. of Employees		Months	No. of Employees	
	Male	Female		Male	Female
January	201	1	July	187	1
February	199	1	August	187	1
March	201	1	September	185	1
April	203	1	October	195	1
May	198	1	November	203	1
June	191	1	December	206	1
Total employment during year				2,356	12
Average employment per month				197	1

Working time:- Table 6 shows the operating time of plants under three heads (a) full time, (b) part time and (c) idle, and also the average hours of labour worked by employees per day or shift and per week. The average operating time of plants in the industry whether on full or part time was 297.88 days and the average hours of labour were 9.38 per day and 54.12 per week.

Table 6. Working time of Plants and Employees, 1928.

Number of plants reporting	8	
	Total	Average
Days in operation		
on full time	2,248	281.00
on part time	135	16.82
idle	49	6.12
Working time of employees		
per day or shift	75	9.38
per week	433	54.12





Other Employment Statistics

The number and percentage of wage-earners in months of highest employment working specified hours per day is shown in Table 7 for the Dominion as a whole. For the Dominion, the number working specified hours was distributed between the classes, the percentage working 8 hours being highest, with nearly 31 per cent of the total employment.

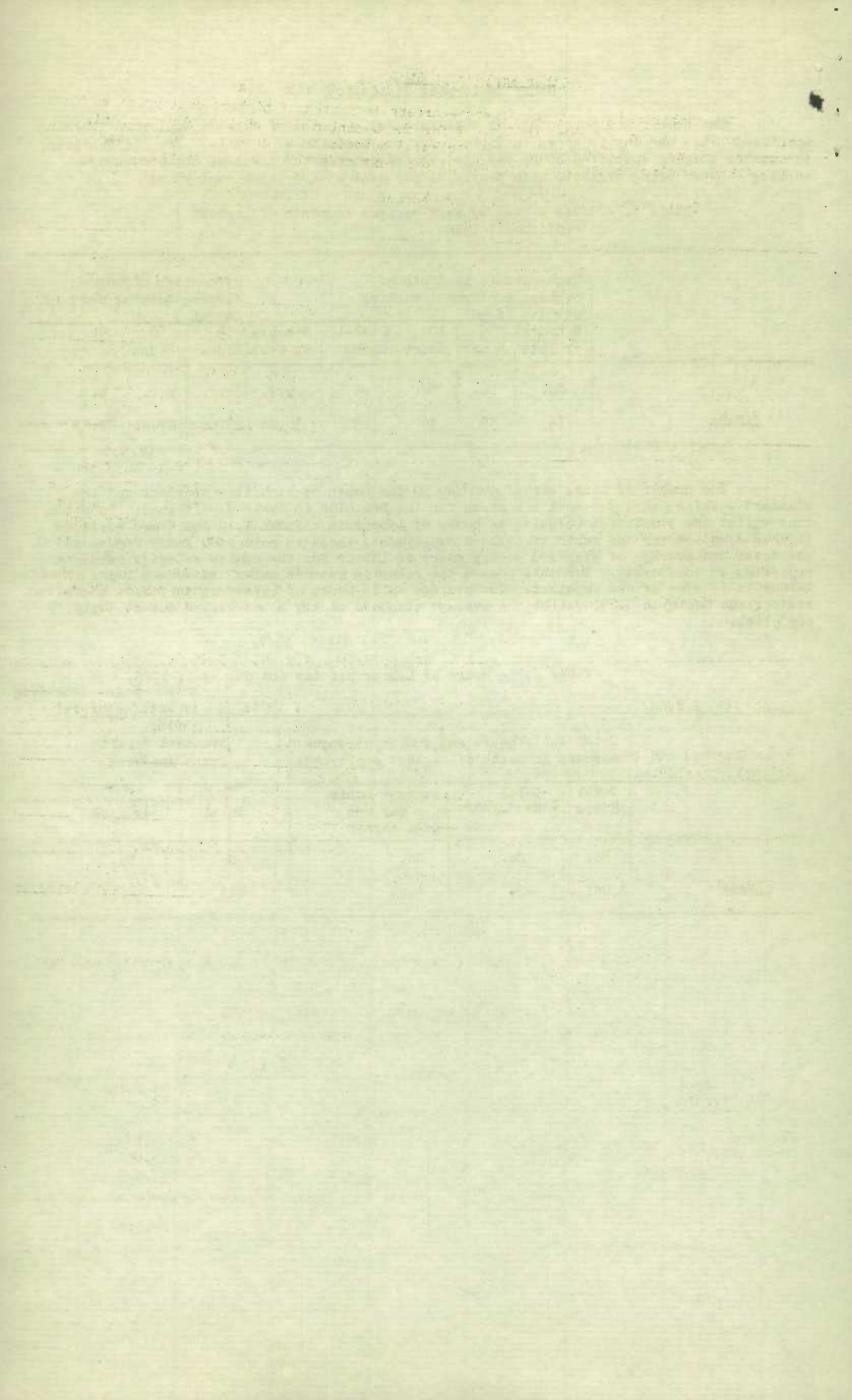
Table 7. - Hours worked by wage-earners in month of highest employment, 1928.

	Wage-earners in month of highest employment working per day of				Percentage of wage-earners working per day of			
	8 hours or less	9 hours	10 hours	Over 10 hours	8 hours or less	9 hours	10 hours	Over 10 hours
	No.	No.	No.	No.	p.c.	p.c.	p.c.	p.c.
CANADA	69	53	39	63	30.80	23.66	17.41	28.13

The number of hours worked per day in the month of highest employment and the standard working hours per week are shown for the Dominion in Table 8. It should be noted that whilst the statistics relating to hours of labour in columns 1, 2 and 3 are based on figures compiled for the month of highest employment, those in columns 4 and 5 represent the total and average of standard weekly hours of labour for the number of establishments reporting to the Bureau. For this reason the relation between daily and weekly hours of labour is to some extent impaired. The average daily hours of labour on the above basis was for the Dominion 9.29, whilst the average standard weekly hours worked out at 54.12 per plant.

Table 8. - Hours of Labour per day and per week, 1928.

	Total daily hours and number of wage-earners in month of highest employment			Standard working hours per week	
	Total Hours	Total Wage-earners	Average hours per day per wage-earner	Total	Average
	No.	No.	No.	No.	No.
CANADA	2,081	224	9.29	433	54.12





- 6 -  
REPORT ON THE LINSEED OIL IN CANADA, 1928.

Fuel Consumption

The quantity and cost value of the fuel consumed by the industry during the year is shown in Table 9, by classes. The total cost of fuel was \$18,828 and of this total bituminous coal accounted for \$16,234 or nearly 87 per cent.

Table 9. Fuel used, by Classes, 1928.

Classes of fuel		Quantity	Cost Value at Mill or Factory
Bituminous coal	Ton	2,374	\$ 16,234
Lignite coal	"	409	1,764
Gasoline	Gal.	950	246
Gas, natural	m. c. ft.	2,304	538
All other	-	-	46
Total cost of fuel		-	18,828

Power Installation

The power installed in the industry in 1928 is shown by kind, number of units and horse-power according to manufacturers rating in Table 10. Primary power installation was represented by 4 units of steam engines with a total rated h. p. capacity of 17 and 3 hydraulic turbines or water wheels of 100 horse power. Secondary power was represented by 109 motors of a rated h.p. capacity of 1,880. The cost of electricity purchased during the year was \$40,987. The number of boilers installed was 11 with a rated h.p. capacity of 849.

Table 10. Power installed, 1928.

Kinds of Power	Number of Units	Horse -power according to manufacturers' rating
Steam Engines and Turbines	4	17
Hydraulic turbines or water wheels	3	100
Total primary power	7	117
Electric motors operated by purchased power	109	1,880
Total power used in manufacturing	116	1,997

Materials Used.

The various items of materials used in the industry is given by provinces in Table 11, for the calendar year, 1928.

Table 11. Materials used by provinces, 1928.

Principal Materials	C A N A D A	
	Quantity Bushels	Cost Value \$
Flaxseed	2,592,787	5,235,104
Containers, etc.	-	115,651
All other materials	-	163,813
TOTAL	-	5,514,568

LIBRARY

The New York Public Library, Astor Lenox Tilden Foundation  
1000 Fifth Avenue, New York, N. Y. 10028

For information, please call (212) 854-2400  
or write to the Circulation Department

At the New York Public Library, Astor Lenox Tilden Foundation  
1000 Fifth Avenue, New York, N. Y. 10028

For information, please call (212) 854-2400  
or write to the Circulation Department

At the New York Public Library, Astor Lenox Tilden Foundation  
1000 Fifth Avenue, New York, N. Y. 10028

For information, please call (212) 854-2400  
or write to the Circulation Department

At the New York Public Library, Astor Lenox Tilden Foundation  
1000 Fifth Avenue, New York, N. Y. 10028

For information, please call (212) 854-2400  
or write to the Circulation Department

At the New York Public Library, Astor Lenox Tilden Foundation  
1000 Fifth Avenue, New York, N. Y. 10028

For information, please call (212) 854-2400  
or write to the Circulation Department

At the New York Public Library, Astor Lenox Tilden Foundation  
1000 Fifth Avenue, New York, N. Y. 10028

For information, please call (212) 854-2400  
or write to the Circulation Department

At the New York Public Library, Astor Lenox Tilden Foundation  
1000 Fifth Avenue, New York, N. Y. 10028

For information, please call (212) 854-2400  
or write to the Circulation Department

At the New York Public Library, Astor Lenox Tilden Foundation  
1000 Fifth Avenue, New York, N. Y. 10028

For information, please call (212) 854-2400  
or write to the Circulation Department



# REPORT ON THE LINSEED OIL IN CANADA, 1928.

## IMPORTS AND EXPORTS

Imports of flax seed, oils and oilcake and meal, for consumption in Canada are shown in Table 12. by quantities and values and by principal countries for the calendar year 1928. The total value of imports for consumption in Canada fell from \$741,885 in 1927 to \$628,673 in 1928, whilst exports increased from \$5,331,439 in 1927 to \$6,654,352 in 1928. According to the "Monthly Bulletin of Agricultural Statistics" the production of flax seed in Canada fell from 5,994,700 bushels valued at \$9,688,000 in 1926 to 4,834,600 bushels valued at \$7,562,000 in 1927, a decrease of 1,110,100 bushels and \$2,126,000 in value.

Table 12. Imports and Exports of Flaxseed, Linseed Oil and Oilcake and Meal, 1928.

Articles by Countries		Imports		Exports	
		Quantity lb.	Value \$	Quantity gal.	Value \$
Flax or linseed oil boiled or raw -		733,957	67,969	5,892	4,847
United Kingdom		442,011	31,350	-	-
United States		273,291	34,652	4,159	3,444
Other Countries		18,655	1,967	1,733	1,403
Flaxseed, n.o.p.	Bush.	299,737	541,558	2,948,275	5,589,527
United Kingdom		179	1,282	-	-
United States		7	24	2,948,275	5,589,527
Argentina		299,105	538,910	-	-
Other Countries		446	1,342	-	-
Linseed oilcake and meal-	Cwt.	4,903	19,146	444,191	1,059,978
United Kingdom		-	-	12,320	29,000
United States		4,903	19,146	269,767	624,536
British West Indies		-	-	112,338	285,135
Netherlands		-	-	42,696	102,046
Other Countries		-	-	7,070	19,261
Grand Total, Value of Imports and Exports		-	628,673	-	6,654,352

### Consumption of Flaxseed, Linseed Oil and Oilcake, 1928.

The consumption of the commodities referred to in the foregoing table is shown in Table 13. In order to compare the statistics of linseed oil, the quantity imported has been converted into gallons at the rate of 9.35 lb. to the gallon of a stated specific gravity, whilst the production of flax seed is representative of the crop of 1927.

Table 13. Consumption of Flaxseed, Linseed Oil and Oilcake and Meal, 1928.

	Flaxseed		Linseed oil, boiled or raw		Oilcake and Meal	
	Quantity Bush.	Value \$	Quantity Gallons	Value \$	Quantity Ton.	Value \$
Production	4,834,600	7,562,000	4,456,353	3,531,834	46,906	2,054,047
Imports	299,737	541,558	78,498	67,969	245	19,146
TOTAL	5,134,337	8,103,558	4,534,851	3,599,803	47,151	2,073,193
less Exports	2,948,275	5,589,527	5,892	4,847	22,209	1,059,978
Available for Consumption	2,236,062	2,514,031	4,528,959	3,594,956	24,942	1,013,215



1010731857