

32-D-29

C3

DOMINION BUREAU
OF STATISTICS
AUG 1 1930
PROPERTY OF THE
LIBRARY

CANADA
DEPARTMENT OF TRADE AND COMMERCE
DOMINION BUREAU OF STATISTICS
DAIRY STATISTICS BRANCH

REPORT
on the
PRODUCTION OF DAIRY FACTORIES
in
CANADA
1929



Published by Authority of the Hon. James Malcolm, M.P.,
Minister of Trade and Commerce

• • •

OTTAWA
1930

32-D-54

3

DEPARTMENT OF STATE
 OFFICE OF THE SECRETARY
 WASHINGTON, D. C. 20520
 AUG 1954

[The remainder of the page contains extremely faint, illegible text, likely bleed-through from the reverse side of the document. The text is too light to transcribe accurately.]

Issued July, 1930

Published by Authority of the Hon. James Malcolm, M.P.
Minister of Trade and Commerce

DOMINION BUREAU OF STATISTICS, OTTAWA, CANADA

Dairy Factory Statistics Section

Dominion Statistician:	R. H. Coats, B.A., F.S.S.(Hon.), F.R.S.C.
Chief, Dairy Factory Statistics Section:	Florence A. Brown

PRELIMINARY REPORT ON THE PRODUCTION OF DAIRY

FACTORIES IN CANADA, 1929.

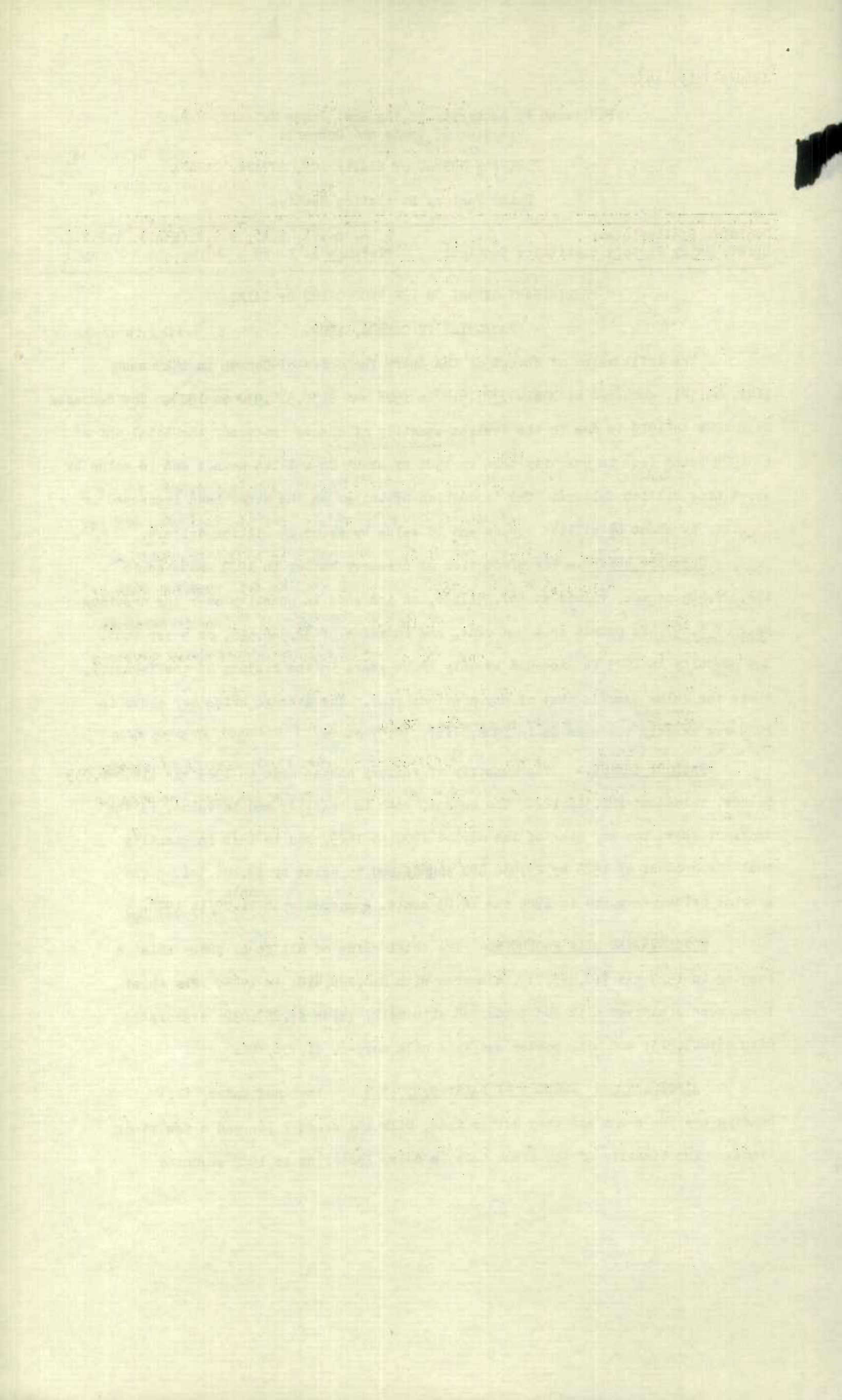
The total value of output of the dairy factories of Canada in 1929 was \$142,665,521, compared with \$144,373,614 in 1928 and \$135,910,930 in 1927. The decrease from 1928 to 1929 is due to the smaller quantity of cheese produced, the total output in 1929 being less in quantity than in 1928 by about 26 million pounds and in value by about nine million dollars. The production of butter on the other hand increased in quantity by about $6\frac{1}{2}$ million pounds and in value by about $2\frac{1}{2}$ million dollars.

CREAMERY BUTTER.— The production of creamery butter in 1929 amounted to 174,724,465 pounds, valued at \$67,291,136, an increase in quantity over the previous year of 6,697,426 pounds or 4 per cent, and in value of \$2,588,598, or 4 per cent. The quantity in 1929 is exceeded by only three years in the history of the industry, while the value exceeds that of any previous year. The average price per pound in 1929 was exactly the same as in 1928, viz., 38.51 cents.

FACTORY CHEESE.— The quantity of factory cheese made in 1929 was 118,646,039 pounds, valued at \$21,388,122. The output, both in quantity and in value, is the smallest shown for any year of the period 1900 to 1929, and is less in quantity than the product of 1928 by 25,938,580 pounds and in value by \$9,106,341. The average price per pound in 1929 was 18.03 cents, compared with ^{cents} 21.09/in 1928.

CONCENTRATED MILK PRODUCTS.— The total value of all items under this heading in 1929 was \$10,485,739, compared with \$10,226,415, in 1928. The chief items were condensed milk and condensed skim milk, value \$3,287,032; evaporated milk \$5,063,913; and milk powder and skim milk powder, \$1,776,741.

MISCELLANEOUS PRODUCTS OF DAIRY FACTORIES.— Included under this heading are ice cream and whey butter made, milk and cream sold, and a few minor items. The quantity of ice cream made in dairy factories in 1929 amounted



to 7,205,144 gallons, valued at \$9,809,686, compared with 6,353,077 gallons, valued at \$8,560,391 in 1928. The value of whole milk sold by the factories in 1929 increased over the preceding year by $7\frac{1}{2}$ per cent, and the value of the cream sold by 19 per cent. The total value of all miscellaneous products sold by the factories in 1929 was \$43,500,524, compared with \$38,950,198 in 1928.

NUMBER OF DAIRY FACTORIES.- The total number of dairy factories in operation during the year 1929 was 2,807, comprising 1,202 creameries, 1,290 cheese factories, 285 combined butter and cheese factories, and 30 condenseries.

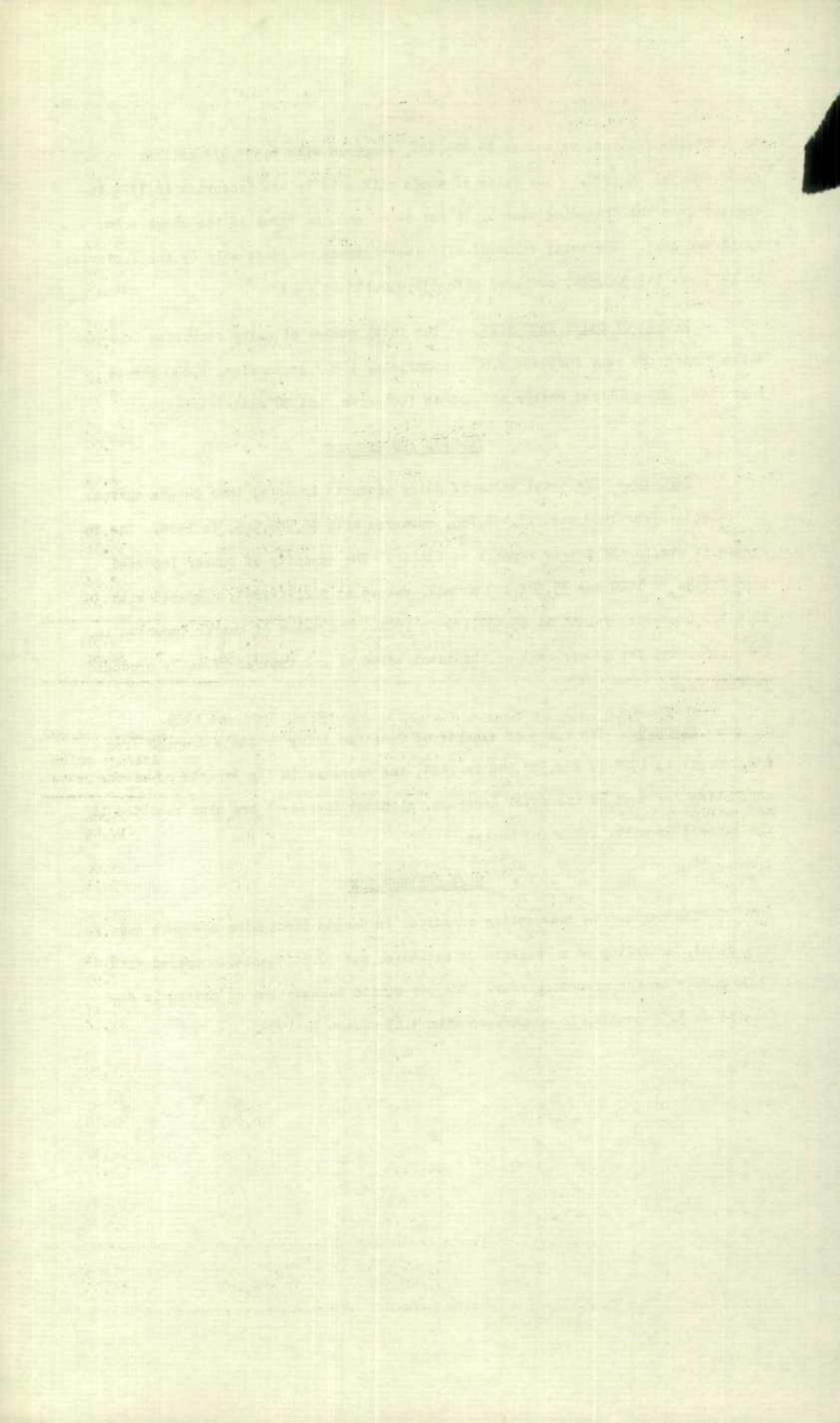
IMPORTS AND EXPORTS

IMPORTS.- The total value of dairy products imported into Canada during the calendar year 1929 was \$13,456,785, compared with \$6,580,915, in 1928. The increase is due to the larger imports of butter. The quantity of butter imported into Canada in 1929 was 35,928,249 pounds, valued at \$12,714,253, compared with 16,801,656 pounds, valued at \$5,937,170 in 1928. The value of butter imported in 1929 accounted for 94 per cent of the total value of all imports of dairy products in that year.

EXPORTS.- The value of exports of Canadian dairy products dropped from \$36,230,617 in 1928 to \$28,398,549 in 1929, the decrease in the exports of cheese accounting for most of the total decrease, although decreases are also recorded in the exports of milk, cream and butter.

HOME CONSUMPTION

The per capita consumption of butter in Canada (including creamery and home-made), according to a preliminary estimate, was 30.56 pounds, compared with 29.06 pounds in the preceding year. The per capita consumption of cheese is estimated at 3.54 pounds, in comparison with 3.63 pounds in 1928.

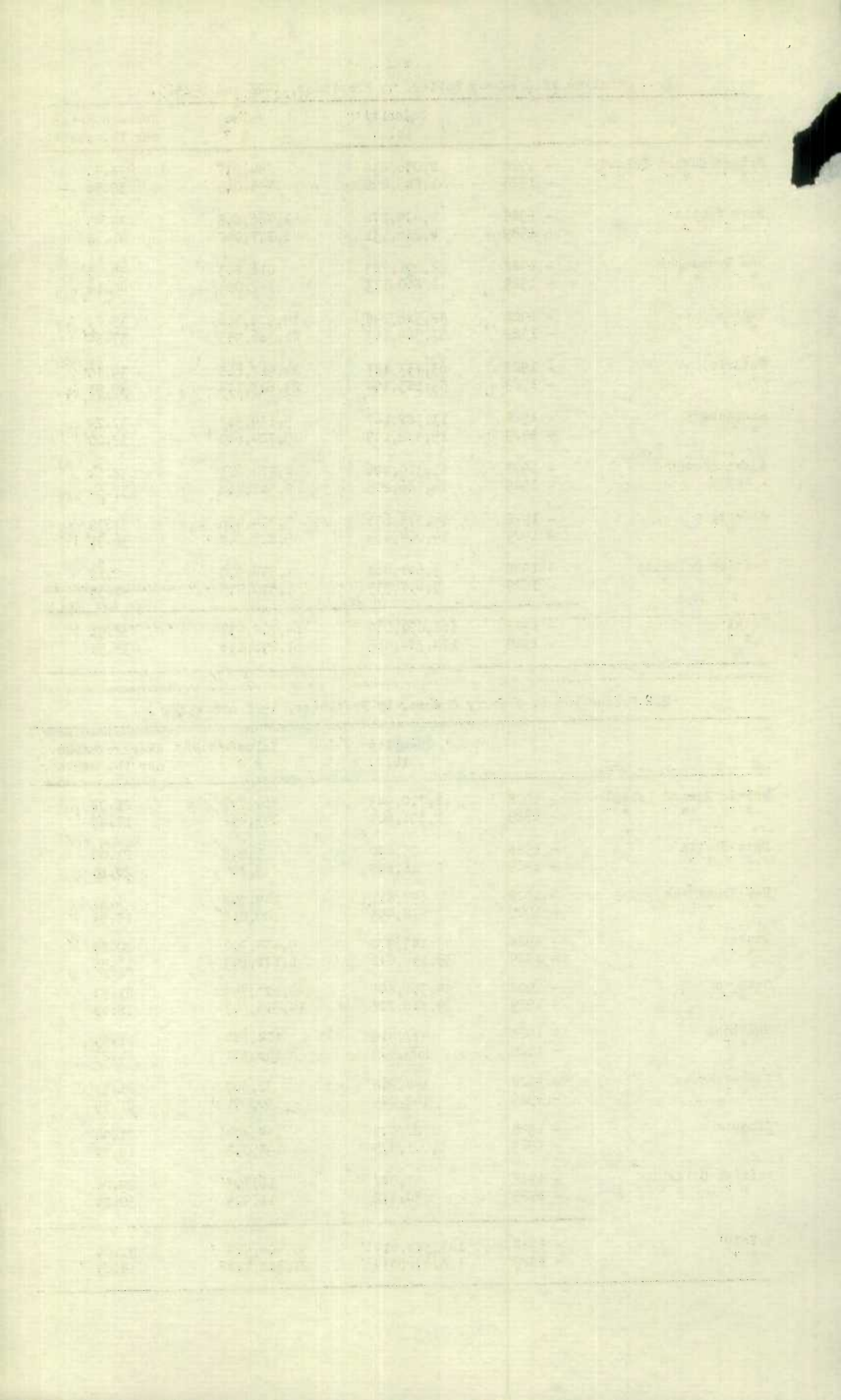


1. Production of Creamery Butter, by Provinces, 1928 and 1929.

		Quantity lb.	Value \$	Average price per lb. cents
Prince Edward Island	- 1928	2,036,838	784,277	38.50
" " "	- 1929	1,883,292	745,069	39.56
Nova Scotia	- 1928	4,479,276	1,766,868	39.45
" " "	- 1929	4,286,531	1,777,047	41.45
New Brunswick	- 1928	2,091,723	816,803	39.05
" " "	- 1929	1,860,173	747,024	40.16
Quebec	- 1928	52,526,248	19,975,556	38.03
"	- 1929	57,569,163	21,786,955	37.84
Ontario	- 1928	63,733,187	24,917,668	39.10
"	- 1929	59,185,194	23,623,174	39.91
Manitoba	- 1928	13,782,167	5,139,387	37.29
"	- 1929	15,472,109	5,724,640	37.00
Saskatchewan	- 1928	11,310,496	4,370,623	38.64
"	- 1929	14,786,205	5,541,464	37.54
Alberta	- 1928	14,375,636	5,374,456	37.39
"	- 1929	16,004,463	5,825,248	36.31
British Columbia	- 1928	3,691,468	1,556,900	42.18
" " "	- 1929	3,677,335	1,520,515	41.35
Total	- 1928	168,027,039	64,702,538	38.51
"	- 1929	174,724,465	67,291,136	38.51

2. Production of Factory Cheese, by Provinces, 1928 and 1929.

		Quantity lb.	Value \$	Average price per lb. cents
Prince Edward Island	- 1928	1,710,943	360,748	21.08
" " "	- 1929	1,391,603	243,452	17.49
Nova Scotia	- 1928	25,230	5,298	21.00
" " "	- 1929	18,867	3,794	20.11
New Brunswick	- 1928	697,811	149,798	21.47
" " "	- 1929	578,493	109,218	18.88
Quebec	- 1928	45,183,970	9,438,302	20.89
"	- 1929	35,156,871	6,171,693	17.55
Ontario	- 1928	95,561,895	20,227,759	21.17
"	- 1929	79,816,828	14,513,547	18.18
Manitoba	- 1928	477,419	104,884	21.97
"	- 1929	500,426	106,351	21.25
Saskatchewan	- 1928	148,215	32,567	21.97
"	- 1929	142,024	30,091	21.19
Alberta	- 1928	722,048	158,404	21.94
"	- 1929	1,001,475	198,047	19.78
British Columbia	- 1928	57,088	16,703	29.26
" " "	- 1929	39,452	11,929	30.24
Total	- 1928	144,584,619	30,494,463	21.09
"	- 1929	118,646,039	21,388,122	18.03



3. Production of Condensed and Evaporated Milk, Milk Powder, Etc.,
1928 and 1929.

	1928		1929	
	Pounds	Value \$	Pounds	Value \$
Condensed milk	27,728,995	2,926,477	25,482,419	2,710,090
Condensed skim milk	7,920,255	437,721	10,491,869	576,942
Evaporated milk	51,654,377	4,815,638	54,117,917	5,063,913
Milk powder	2,314,490	578,088	2,167,333	533,904
Skim milk powder	12,509,187	1,236,277	12,787,818	1,242,837
Cream powder	114,835	57,599	115,614	59,281
Buttermilk powder	380,442	28,745	769,405	61,080
Condensed buttermilk	552,456	21,462	441,366	19,283
Condensed coffee	250,347	44,682	247,833	43,768
Casein	563,061	79,726	1,211,451	174,641
Total Value	-	10,226,415	-	10,485,739

4. Miscellaneous Products of Dairy Factories, 1928 and 1929.

		1928		1929	
		Quantity	Value \$	Quantity	Value \$
Whey butter	Lb.	1,582,364	542,339	1,310,082	456,719
Ice cream	Gal.	6,353,077	8,560,391	7,205,144	9,809,686
Milk sold ^x	"	43,708,410	19,369,286	46,822,018	20,829,505
Cream sold ^x	(Lb. b. fat)	14,543,108	9,225,837	16,950,465	11,016,541
Buttermilk		-	370,336	-	388,092
Whey cream	(Lb. b. fat)	837,640	275,344	734,629	252,831
Ice cream mix	Gal.	396,365	385,625	390,614	385,645
Sundry ^{xx}		-	221,040	-	361,505
Total Value		-	38,950,198	-	43,500,524

NOTE:-

x. Exclusive of Quebec, for which figures are not available.

xx. Comprises skim milk cheese, skim milk, whey, etc.



SECRET

IMPORTS AND EXPORTS

(Compiled by the External Trade Branch)

5. Imports into Canada of Dairy Products, for Home Consumption 1928 and 1929.

		1928		1929	
		Quantity	Value \$	Quantity	Value \$
Milk and cream, fresh	Gal.	29,140	16,875	20,035	17,189
Butter	lb.	16,801,656	5,937,170	35,928,249	12,714,253
Cheese	"	1,778,761	554,373	2,103,724	624,137
Milk condensed	"	137,252	28,870	178,968	40,022
Casein	"	369,916	43,627	503,429	61,184
Total Milk and its products		-	6,580,915	-	13,456,785

6. Total Exports of Canadian Products, 1928 and 1929

		1928		1929	
		Quantity	Value \$	Quantity	Value \$
Milk, fresh	Gal.	3,959,812	866,920	3,291,819	750,257
Cream, fresh	"	3,043,418	5,593,399	2,385,754	4,911,535
Butter	Lb.	1,994,800	805,055	1,400,400	583,065
Cheese	"	114,152,500	25,467,642	92,946,100	18,503,575
Milk, evaporated	"	6,693,500	598,601	8,893,100	1,012,753
Milk powder	"	4,888,500	541,064	5,236,000	630,872
Milk, condensed	"	20,424,800	2,324,044	17,853,200	1,981,736
Casein	"	248,582	33,892	174,684	24,756
Total Milk and its products		-	36,230,617	-	28,398,549



1010753393