

35-D-27

CV

STATISTICS STATISTIQUE
CANADA CANADA

DEC 3 1931
APR 26 2011

PROPERTY OF THE
LIBRARY
BIBLIOTHÈQUE

CANADA
DEPARTMENT OF TRADE AND COMMERCE
DOMINION BUREAU OF STATISTICS
FOREST PRODUCTS BRANCH

PRELIMINARY REPORT
on the
HANDLE, SPOOL & WOOD-TURNING INDUSTRY
in
CANADA
1929 - 1930

(Subject to revision on further examination of individual reports)

-----+ + +-----

Published by Authority of the Hon. H. H. Stevens, M.P.,
Minister of Trade and Commerce

+ + +

OTTAWA

1931

STATISTICAL SERVICE
CANADA

1970-1971

1970-1971

1970-1971

1970-1971

1970-1971

1970-1971

1970-1971

1970-1971

1970-1971

1970-1971

1970-1971

1970-1971

1970-1971

1970-1971

1970-1971

1970-1971

1970-1971

1970-1971

1970-1971

1970-1971

1970-1971

1970-1971

1970-1971

1970-1971

1970-1971

1970-1971

DOMINION BUREAU OF STATISTICS
CENSUS OF INDUSTRY - FOREST PRODUCTS BRANCH
OTTAWA - CANADA

Dominion Statistician:	R. H. Coats, B.A., F.S.S. (Hon.), F.R.S.C.
Forest Products Statistics:	R. G. Lewis, B.Sc.F.

HANDLES, SPOOLS AND WOOD-TURNING

1929 - 1930.

Ottawa, November, 1931. - A report has recently been issued by the Forest Products Branch of the Dominion Bureau of Statistics dealing with the manufacture of handles, spools and other wood-turning in Canada in 1929 and 1930. This report gives details concerning firms which specialize in the production of these commodities and covers the greater part of their production in Canada. There are, however, a number of firms classified under other industrial groups which make handles, spools and turnery as a side-line or by-product to their principal production.

In 1930 there were 39 plants included in the wood-turning industry. Twenty-one were located in Ontario, thirteen in Quebec, three in British Columbia, and one each in Nova Scotia and New Brunswick.

The total capital invested was \$2,127,617 as against \$1,718,051 in 1929. The value placed on lands, buildings and machinery was \$1,260,246; inventories of stocks and materials were placed at \$628,413 and the cash, trading and operating accounts aggregated \$238,958.

During the year the wood-turning industry gave employment to 62 salaried employees and to an average of 531 wage-earners, or a total of 593 workers as against 651 in 1929. Payments for salaries and wages totalled \$450,859 as compared with \$486,596 in the previous year.

The manufacturers of handles, spools and wood turnery purchased fuel to the value of \$6,542 of which \$3,664 was spent in bituminous coal. Most of the fuel used was wood waste, from the factories themselves, which was of little or no commercial value. The total power employed was 2,703 H.P., most of which was generated by electric motors operated on purchased power and steam engines burning the waste referred to above.

Sawn lumber, the greater part of which was hardwood made up the largest item of the raw materials used, amounting to 4,165 M. ft. b.m., valued at \$174,161. Hardwood bolts were purchased to the value of \$58,033. Veneer and other materials made up the total of \$607,713.

The principal products manufactured in the order of their importance as far as value is concerned were spools, bobbins and smuttles \$389,070, axe and long tool handles \$332,733, small tool handles \$56,928, broom handles \$66,702, dowels \$14,710, baseball bats \$2,682 and all other wood-turning \$154,904. In addition to these principal products the industry also manufactured as secondary products sporting goods, vehicle supplies, planing mill products, woodenware, and a number of other miscellaneous items bringing the total gross value of production to \$1,341,128.

The following tables include a comparative summary of the principal statistics of the industry for the calendar years 1929 and 1930 followed by comparative tables giving the details of the distribution of establishments, materials used, products manufactured, capital invested, employment, fuel used and power employed.

1. The first part of the document is a list of names and addresses, which are arranged in two columns. The names are written in a cursive hand, and the addresses are written in a more formal, printed style. The list appears to be a directory or a roster of some kind.

2. The second part of the document is a series of paragraphs of text, which are also arranged in two columns. The text is written in a cursive hand, and it appears to be a letter or a report of some kind. The paragraphs are separated by small gaps, and the text is somewhat faded and difficult to read.

3. The third part of the document is a list of names and addresses, which are arranged in two columns. The names are written in a cursive hand, and the addresses are written in a more formal, printed style. The list appears to be a directory or a roster of some kind.

4. The fourth part of the document is a series of paragraphs of text, which are also arranged in two columns. The text is written in a cursive hand, and it appears to be a letter or a report of some kind. The paragraphs are separated by small gaps, and the text is somewhat faded and difficult to read.

Handles, Spools and Wood-turning, 1929 - 1930.

Table 1. - Principal Statistics, 1929 - 1930.

Items		1 9 2 9	1 9 3 0
Establishments	No.	33	39
Capital Invested	\$	1,718,051	2,127,617
Employees on Salaries	No.	51	62
Salaries paid	\$	82,076	98,650
Employees on Wages	No.	600	531
Wages paid	\$	404,520	352,209
Fuel Used	\$	7,898	6,542
Power Employed	H.P.	2,211	2,703
Cost of Materials	\$	486,796	607,713
Value of Products	\$	1,457,714	1,341,128

Table 2. - Distribution of Establishments by Provinces, 1929 - 1930.

Provinces	1 9 2 9 No.	1 9 3 0 No.
CANADA	33	39
Quebec	12	13
Ontario	18	21
Nova Scotia	1	1
British Columbia	2	3
New Brunswick	-	1

Table 3. - Materials Used, 1929 - 1930.

Materials	QUANTITY		VALUE	
	1929	1930	1929	1930
			\$	\$
TOTAL	-	-	486,796	607,713
Lumber or logs softwood	M ft. b.m.	190	4,907	23,556
Lumber or logs hardwood	"	5,875	231,940	150,605
Bolts, etc. softwood	Cords	-	-	-
Bolts, etc. hardwood	"	4,632	90,610	58,033
Veneer and plywood	M Surf. ft.	28	3,918	69,123
All other materials	Value	-	155,421	306,396

Handles, Spools and Wood-turning, 1929 - 1930.

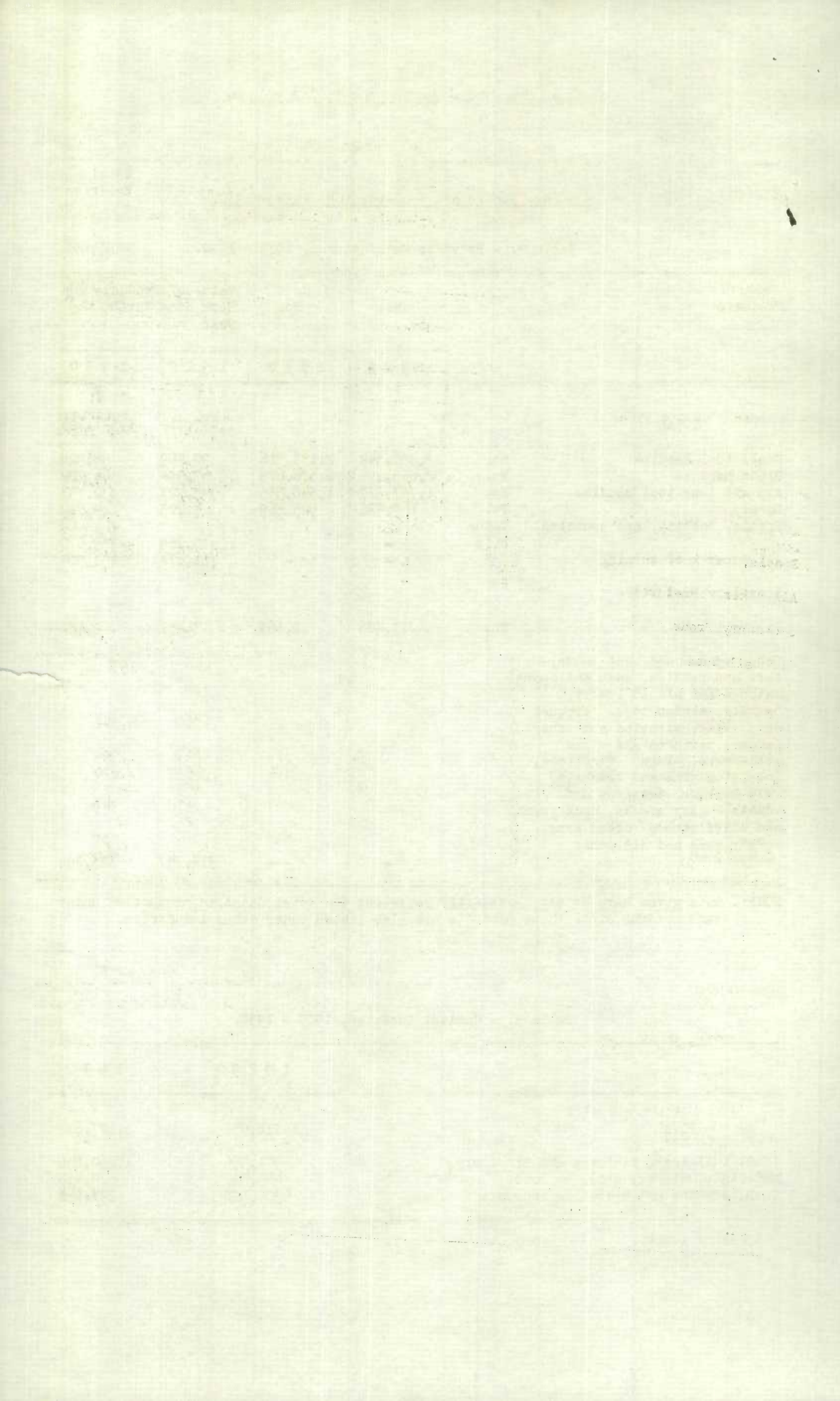
Table 4. - Products Manufactured, 1929 - 1930.

Products		No.	No.	Value of Products and Work done during the year	
				1929	1930
				\$	\$
TOTAL		-	-	1,457,714	1,341,128
Small tool handles	No.	3,390,544	2,158,316	90,469	56,928
Broom handles	No.	2,855,294	2,676,675	67,984	66,702
Axe and long tool handles	No.	1,787,977	1,548,535	344,927	332,733
Dowels	Ft.	169,426	925,569	4,203	14,710
Spools, bobbins, and shuttles	Value only	-	-	470,759	389,070
All other wood-turning	"	-	-	161,174	154,904
Secondary Products -					
Baseball bats	No.	17,186	12,663	3,451	2,682
Hubs, spokes and bent goods,)				
oars and paddles, sash and doors					
matched and planed lumber,					
baskets, wooden toys, croquet					
sets, step, extension and other					
ladders, kitchen and other					
woodenware, plugs, furniture,					
insulator pins and brackets,					
wood pulleys, patterns and					
models, peavy stocks, neck yokes					
and whiffletrees cross arms,					
repair work and all other					
products		-	-	314,747	323,399

NOTE:- Data given here do not necessarily represent the total Canadian production under each heading since these products are also listed under other industries.

Table 5. - Capital Invested, 1929 - 1930.

	1929	1930
	\$	\$
TOTAL	1,718,051	2,127,617
Land, buildings, fixtures and machinery	971,596	1,260,246
Materials, stocks, etc., on hand	445,527	628,413
Cash, trading and operating accounts	300,928	238,958



Handles, Spools and Wood-turning, 1929 - 1930.

Table 6(a). - Employment, 1929.

Classes of Employees	Total Number of Employees	Males	Females	Total Salaries and Wages
				\$
TOTAL	651	554	97	486,596
Salaried employees	51	38	13	82,076
Employees on wages	600	516	84	404,520

Table 6(b). - Employment, 1930.

Classes of Employees	Total Number of Employees	Males	Females	Total Salaries and Wages
				\$
TOTAL	593	517	76	450,859
Salaried employees	62	48	14	98,650
Employees on wages	531	469	62	352,209

Table 7. - Fuel Used, 1929 - 1930.

Kind of Fuel	Quantity		Value	
	1929	1930	1929	1930
			\$	\$
TOTAL	-	-	7,898	6,542
Bituminous coal Canadian tons	24	270	199	1,994
Bituminous coal Imported tons	340	215	2,659	1,670
Anthracite coal tons	85	-	553	-
Gasoline gals.	110	1,540	31	349
Kerosene or coal oil gals.	400	-	80	-
Wood cord	702	122	4,376	589
Other fuel	-	-	-	1,940

Table 8. - Power Employed, 1929 - 1930.

Power Units	No. of Units		Total H. P.	
	1929	1930	1929	1930
TOTAL POWER USED	126	111	2,211	2,703
Stationary Engines				
Steam	24	26	933	1,171
Oil, gas and gasoline	2	2	14	14
Hydraulic turbines	1	-	30	-
Electric motors -				
Purchased power	99	83	1,234	1,518
Generated power	-	-	-	-
Boilers Installed	17	19	1,255	1,435

Handles, Spools and Wood-turning were the principal products of the following firms in 1930.

MANUFACTURERS OF WOOD-TURNING - HANDLES, 1930.

Nova Scotia

MacKay, J. J.

Willowdale

New Brunswick

Simard, A. L.

Tracadie

Quebec

Bedford Mfg. Co. Ltd.
Dominion Shuttle Co. Ltd.
Howe Mfg. Specialty Co. Ltd.
Industrial Specialty Mfg. Co.
Marcotte, D. O.
Millette & Freres
National Wood-Turning Reg'd.
Owls Head Lumber Co. Reg'd.
Perusse, Philippe
Rainville, A.
Rousseau, L. & Freres
Taschereau & Freres
Vallee & Vallee

Bedford
Lachute Mills
Three Rivers
Magog
South Roxton
Magog
St. Alexis des Monts
Mansonville
Deschaillons
Beloeil Station
40 rue Dorchester, Quebec
Plessisville
Lac Megantic

Ontario

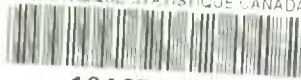
Automatic Wood Turnings Ltd.
Avery, W. W.
Buller & Brebner
Canada Spool and Bobbin Co. Ltd.
Canadian Turner Day Handle Co. Ltd.
Columbia Handle & Lumber Co. Ltd.
Coward Co., W. A.
Elgin Handles, Ltd.
Ewing & Murphy
Forster, S. H.
Gardner-Stevens Mfg. Co.
Guenzler, Geo. & Son
Hartwell Bros. Ltd.
Manning, James A.
Parry Sound Wood Turners Ltd.
Rettinger, Jos. F.
Rubberset Co. Ltd.
Standard Handle & Pattern Co.
Stokes, L. W.
Still, J. H. Mfg. Co. Ltd.
Thomas W. F. (Peerless Handle Co.)

Queen W. & Abell Sts., Toronto
Norwich
Holstein
Walkerton
Strathroy
London
Hespeler
St. Thomas
18 Cameron St., Toronto
Hamilton
St. Catharines
Waterloo
Walkerville
29 Milan St., Toronto 2
Parry Sound
Preston
Gravenhurst
Fenelon Falls
London
St. Thomas
St. Thomas

British Columbia

Dominion Shuttle Co. Ltd.
Spruce Specialties Ltd.
Smith J. Fife Co. Ltd.

New Westminster
H.O. Lachute Mills, Que.
620 Taylor Street, Vancouver
1320 Richards Street, Vancouver.



1010764366

ANNUAL REPORT OF THE COMMISSIONER OF THE GENERAL LAND OFFICE

1900-1901

1900

1901

1902

1903

1904

1905
1906
1907
1908
1909
1910
1911
1912
1913
1914
1915
1916
1917
1918
1919
1920
1921
1922
1923
1924
1925
1926
1927
1928
1929
1930
1931
1932
1933
1934
1935
1936
1937
1938
1939
1940
1941
1942
1943
1944
1945
1946
1947
1948
1949
1950
1951
1952
1953
1954
1955
1956
1957
1958
1959
1960
1961
1962
1963
1964
1965
1966
1967
1968
1969
1970
1971
1972
1973
1974
1975
1976
1977
1978
1979
1980
1981
1982
1983
1984
1985
1986
1987
1988
1989
1990
1991
1992
1993
1994
1995
1996
1997
1998
1999
2000
2001
2002
2003
2004
2005
2006
2007
2008
2009
2010
2011
2012
2013
2014
2015
2016
2017
2018
2019
2020
2021
2022
2023
2024
2025
2026
2027
2028
2029
2030
2031
2032
2033
2034
2035
2036
2037
2038
2039
2040
2041
2042
2043
2044
2045
2046
2047
2048
2049
2050
2051
2052
2053
2054
2055
2056
2057
2058
2059
2060
2061
2062
2063
2064
2065
2066
2067
2068
2069
2070
2071
2072
2073
2074
2075
2076
2077
2078
2079
2080
2081
2082
2083
2084
2085
2086
2087
2088
2089
2090
2091
2092
2093
2094
2095
2096
2097
2098
2099
2100

1900
1901
1902
1903
1904
1905
1906
1907
1908
1909
1910
1911
1912
1913
1914
1915
1916
1917
1918
1919
1920
1921
1922
1923
1924
1925
1926
1927
1928
1929
1930
1931
1932
1933
1934
1935
1936
1937
1938
1939
1940
1941
1942
1943
1944
1945
1946
1947
1948
1949
1950
1951
1952
1953
1954
1955
1956
1957
1958
1959
1960
1961
1962
1963
1964
1965
1966
1967
1968
1969
1970
1971
1972
1973
1974
1975
1976
1977
1978
1979
1980
1981
1982
1983
1984
1985
1986
1987
1988
1989
1990
1991
1992
1993
1994
1995
1996
1997
1998
1999
2000
2001
2002
2003
2004
2005
2006
2007
2008
2009
2010
2011
2012
2013
2014
2015
2016
2017
2018
2019
2020
2021
2022
2023
2024
2025
2026
2027
2028
2029
2030
2031
2032
2033
2034
2035
2036
2037
2038
2039
2040
2041
2042
2043
2044
2045
2046
2047
2048
2049
2050
2051
2052
2053
2054
2055
2056
2057
2058
2059
2060
2061
2062
2063
2064
2065
2066
2067
2068
2069
2070
2071
2072
2073
2074
2075
2076
2077
2078
2079
2080
2081
2082
2083
2084
2085
2086
2087
2088
2089
2090
2091
2092
2093
2094
2095
2096
2097
2098
2099
2100