

66M001GPE (B)  
2004  
c. 1

NOT FOR LOAN  
NE S'EMPRUNTE PAS

---

**International Travel Survey**  
**UNITED STATES RESIDENT TRIPS TO CANADA**  
**MICRODATA FILE DOCUMENTATION**  
**2004**

---



## BACKGROUND

The International Travel Survey (ITS) is an ongoing survey conducted by Statistics Canada since 1920 to meet the requirements of the Balance of Payments of the Canadian System of National Accounts (BOP). Through the years, questions directed at collecting detailed characteristics of travellers for market research and industry planning were gradually incorporated in the survey. Today, the ITS provides a full range of statistics on the volume of international travellers and detailed characteristics of their trips such as expenditures, activities, places visited and length of stay.

The ITS covers both Canadian residents returning from trips outside Canada and international visitors to Canada. In addition to fulfilling BOP requirements, the ITS is also being used by the Tourism Satellite Account (TSA), Canada Border Services Agency (CBSA), the Canadian tourism Commission (CTC), provincial tourism agencies, the United States Department of Commerce and a number of private sector industries. The ITS is also used for reporting to international organizations such as the World Tourism Organization (WTO), the Organization for Economic Co-operation and Development (OECD) and the Pacific-Asia Tourism Association (PATA).

## DATA COLLECTION METHODS

The ITS consists of two main components: the frontier counts and the questionnaires. Both these methods depend greatly on the co-operation of CBSA in the collection of the number of border crossings and the distribution of questionnaires. The following is a brief description of each of these methods.

### *Frontier Counts – International Travellers Entering or Canadians Re-entering Canada*

The frontier count component is simply an enumeration of all international travellers recorded on forms used by Canada Border Services officials to register entries into Canada. In the 18 largest international airports, data is recorded on Customs Declaration (E-311) cards. Number of travellers, country of residence and type of entry<sup>1</sup> are captured from these forms for the estimation of frontier counts by flow and airport. With each airport classified as large, medium or small<sup>2</sup>, data capture is done on a sample basis for several combinations of flows and port sizes, and on a census basis for the remaining combinations. Since the 1920's CBSA has supplied Statistics Canada with administrative data on all international travellers who have been cleared for entry into Canada.

---

1 Type of entry applies to Canadian and overseas travellers only. For Canadian travellers, there are three types of entry: from the U.S. only, directly from overseas, from overseas via the U.S. In the case of overseas travellers, there are two types of entry: directly to Canada, to Canada via the U.S.

2 The large airports are Montreal-Dorval, Toronto (T1, T2, T3), Calgary and Vancouver. Medium-large size airports are Halifax, Winnipeg and Edmonton. Medium-small size airports are Montreal-Mirabel and Ottawa. Small size airports are St. John's, Gander, Quebec (Ancienne-Lorette), London, Saskatoon, Regina and Victoria.



The main objective of the survey is to produce traveller flows for the administrative use of different government departments and to satisfy the requirements of the Balance of Payments. The Frontier Counts survey provides a full range of statistics on the number of international travellers by several categories (country of residence, type of transportation, etc.) as well as the number of automobiles, trucks and other vehicles (motorcycles, snowmobiles, bicycles) entering Canada. These data are also used in weighting the questionnaire component of the survey.

### **Questionnaires - International Travel Characteristics**

The questionnaire component of the survey is used to secure quarterly information on the characteristics of international travellers and trips. These details include purpose of trip, size of travelling party, places visited, activities participated in during the trip, length of trip and trip spending. This component of the survey is used to update the Canadian Balance of International Payments. In addition, the federal and provincial governments, the tourism industry, businesses and the general public use quarterly and annual estimates of international trip and traveller characteristics.

The questionnaires are obtained via the mail-back questionnaire survey and the air-exit survey of overseas travellers.

#### **Mail-back questionnaires survey**

This is a sample survey, where questionnaires are distributed only to part of the traveller population. Canada Border Services officials hand out the questionnaires to the travel party on entry according to pre-arranged schedules. A stint distribution system has been developed to survey international travellers based on previous year's traffic. A stint consists of a selected period of several days during which questionnaires are to be distributed to eligible travellers. Each port involved in this scheme receives, for each of its stints, a specific quantity of numbered questionnaires and a date when to start the distribution. On the start date, the officers hand out the questionnaires on a continuous basis to the appropriate travelling population until they have all been distributed. Respondents are requested to mail back their completed questionnaires in Canada (for Canadian and overseas travellers) or in the United States (for U.S. travellers). The number of questionnaires distributed in 2004 was about one million questionnaires for all flows.

Canada Border Services officials hand out one of five questionnaires to the travel party on entry or re-entry to Canada. The questionnaires are distributed to the following:

- Residents of countries other than the United States visiting Canada (or Overseas residents);
- **United States travellers visiting Canada;**
- **United States residents visiting Canada by auto on the same day (less than 24 hours);**
- Canadian residents returning from trips outside Canada;
- Canadian residents leaving and returning to Canada by auto on the same day (less than 24 hours).

### **Air Exit Survey of overseas travellers**

In the case of overseas travellers returning directly to selected overseas countries, additional questionnaires are obtained via the Air Exit Survey (AES). At the international airports in five cities (Halifax, Montreal, Toronto, Calgary and Vancouver), Statistics Canada's interviewers conduct personal interviews with overseas travellers as they await their return flights to targeted overseas countries. These interviews are conducted each month and the collection period lasts 5 to 7 days. In 2004, almost 8,000 interviews were completed. The targeted countries are those from which we attract the most visitors. They include principally the United Kingdom, Germany, France and Japan as well as a number of smaller markets, such as the Mexico, South Korea, Switzerland and the Netherlands. The interviewing team consists of interviewers of different language skills, enabling interviews to be conducted in the native language of the travellers where possible. The questionnaire is available in 10 languages.



## CONCEPTS AND DEFINITIONS

### *International Traveller*

The term international traveller applies to all persons arriving in Canada who are cleared through CBSA points of entry. Any person may cross into Canada more than once in the same period. The method of collection counts each crossing made. Therefore, the figures represent the number of crossings (entries or re-entries), and include double counting of travellers who cross the border more than once in the time period. The term international traveller is divided into three groups: non-resident traveller, resident traveller and other traveller.

### **Non-resident Traveller**

A non-resident traveller is an international traveller resident of a country other than Canada who is cleared through CBSA points of entry on a visit for a period of less than 12 months. Canadian citizens residing in other countries coming to Canada on leave are included. This category includes persons entering Canada for the following reasons:

- Business, business meetings, commuting to work, seasonal or temporary employment;
- attending a convention, conference or seminar;
- educational study; summer resident;
- visiting friends or relatives;
- pleasure, holiday, vacation, attend events or attractions, shopping;
- personal reasons (medical, wedding, etc.)
- persons travelling in transit who clear Canada Customs.

### **Resident Traveller**

A resident traveller is an international traveller resident of Canada who has travelled outside of Canada for a period of less than 12 months for the same reasons as given above and who is returning to Canada through Canada Border Services Agency. Foreign citizens, who are residing in Canada, travelling abroad on leave or for other reasons are included.

### **Other Traveller**

Other travellers include the following types of international travellers:

- **Immigrants.** Citizens of other countries entering Canada to take up permanent residence for more than one year.
- **Former residents.** Canadian citizens returning to Canada to re-establish permanent residence after residing outside Canada for more than one year.
- **Military personnel, diplomats and dependents.** Canadian citizens and dependents who have been stationed abroad for more than one year and who are returning from postings. Foreign citizens and dependents entering Canada on military or diplomatic posting.
- **Crews.** Persons engaged in the operation of a transport: air, sea, truck, train, etc.

### ***Type of entry in the country***

Resident travellers and non-resident travellers from countries other than the United States are grouped by type of entry used to enter or re-enter Canada. There are four categories:

#### **Direct to Canada**

Non-residents entering or Canadian residents returning from countries other than the United States directly to Canada, regardless of the mode of transportation used to enter or leave Canada.

#### **Via the United States - by land - same-day trip**

Non-resident travellers entering or Canadians returning from countries other than the United States through or by way of the United States. The length of stay in the United States has no bearing on the classification, a person could be in transit through the United States or could have stayed several days. Three examples follow: a non-resident visiting the United States who during his visit enters Canada would be counted as entering via the United States; a non-resident entering direct to Canada who visits the United States during his trip would be counted direct on his first entry and via the United States on his second entry; and, a returning resident vacationing in the southern United States who travels to the Caribbean or other countries during his trip would be classified as returning via the United States. This latter group is difficult to identify at the border point and may be categorized as returning from the United States only.

Travel by land includes automobile, bus and rail traffic as well as cycle (bicycle, motorcycle) and pedestrian. Included is traffic entering on ferries either by car or foot.

In this category, only travellers entering and leaving Canada in less than 24 hours are included.

#### **Via the United States - by land - overnight trip**

Same definition as above except that the trip duration must be more than 24 hours.

#### **Via the United States - by other methods**

This category includes non-resident travellers entering or Canadians returning from countries other than the United States via the United States by a mode of transportation other than land regardless of the trip duration. Other modes of transportation include persons travelling by air or sea using commercial and charter services. Also included are persons travelling in owned or rented planes or boats whereby a fare has not been charged for an individual seat. Plane owned or rented by companies to transport employees to business meetings are included.

#### ***Travel Party***

Persons from the same country travelling together (whether they are from the same household or not) who are willing to report collectively their trip spending and activities.



### **Party composition**

The travel party composition refers to the number of adults and/or children who are part of the same travel party.

### **Person-trip**

Each time a non-resident traveller enters Canada marks the beginning of a person-trip. The traveller's entry is recorded by Canada Border Services Agency (CBSA) officials. The person-trip concludes when the traveller leaves Canada. For residents, each time a person departs from Canada, a person-trip begins. The person-trip ends when the traveller returns to Canada. His/her re-entry is recorded by CBSA.

### **Same-day trip**

Same-day travel encompasses travellers who enter and leave a country in less than 24 hours. This category includes persons resident in one country and commuting daily to and from work in another country.

### **Overnight trip**

Travel of one or more nights includes travellers staying at least 24 hours in a country other than that where he/she resides. This classification closely approximates the term «tourist» although it includes temporary and seasonal workers, students, and in transit travellers.

### **Purpose of Trip**

The main reason for the trip to a country is generally summarized as follows:

- **Business.** Includes attending a meeting or convention, a conference, trade show or seminar, or other work.
- **Visiting friends or relatives.**
- **Pleasure.** Includes holiday, vacation, visiting second home, cottage or condo, and attending events and attractions.
- **Other purposes.** Includes personal, in transit, shopping, educational study and other.

### **Origin or Residence**

The origin or residence is the place of last permanent residence normally summarized by census region for United States residents, by country for other residents, and by province for Canadian residents.

### **Area of Destination**

The area of destination is the place where the traveller spends most of his/her time. If two or more main areas are listed on the questionnaire, they are coded and split in the tabulation according to the number of nights spent in each area.

### **Mode of transportation**

The mode of transportation to *enter* and *exit* Canada is captured as well as any mode of transportation that was used *while in* Canada or the country visited.

### **Trip duration**

A trip starts when a person crosses the border and ends when he/she leaves the country. The trip duration is measured by the number of nights a non-resident traveller spends in Canada or the number of nights a resident traveller spends outside Canada.

### **Person-trip-night**

Each night a non-resident traveller spends in Canada, or a resident traveller spends outside Canada, during a person-trip is considered a person-night.

### **Visit**

A **non-resident traveller** may stay in several locations on one trip to Canada; each stay represents a visit. A **resident traveller** may cross into several countries or states before being recorded as having re-entered Canada; each of these crossings represents a visit. Estimates of visits are derived from the questionnaire component.

### **Same-day visit**

On the course of a same-day trip, a traveller may visit different location(s). However, only one location is captured on a same-day trip. On the course of an overnight trip, every location visited where the respondent has not spent a night is recorded as a same-day visit.

### **Overnight visit**

An overnight visit can only be done on an overnight trip. In such a case, the location visited is defined as the location where the respondent has spent at least one night. If, during the same trip, multiple nights are spent at the same location, or the same location is travelled to multiple times, only one visit is recorded for that location.

### **Person-visit**

Same-day or overnight visit made by a person taking a trip. The total number of person-visits is the total number of visits made by each person, in each travel party, on each trip taken.



### **Visit duration**

The visit duration is measured by the number of nights a visitor spends in a specific location.

### **Person-visit-night**

One night spent in the visited location by a person taking a trip. For example, a person who spends three nights in the visited location has a count of three person-visit-nights in that location.

### **Accommodation**

The accommodation used in each location visited: Hotel, Motel, Home of friends or relatives, Camping, Cottage or cabin and Other.

### **Activities**

Travellers report all activities in which they have taken part during the *trip* rather than during their *visit*. For this reason, an activity cannot be associated with a precise location. For example, during the same trip, a person may visit Vancouver and Whistler, and declare they have done some downhill skiing. In this case, when compiling data, the «downhill skiing» activity will be attributed to both Vancouver and Whistler. However, since activity information is only collected at the trip level, this activity may have occurred only in Vancouver or only in Whistler.

Activities are not available for American or Canadian travellers on a same-day trip by car.

### **Expenditures**

Trip expenditures made by all members of the travelling party. Expenditures may have been paid for by individuals, by government or by a private sector business. The expenditures are broken down into the following categories: accommodation, transportation in Canada (include gasoline expenditures, rented car, intercity plane, bus and train fares, boat tours, local bus, taxi), food and beverage, recreation and entertainment, and other (souvenirs, shopping, photos, etc.). Expenditures are reported in Canadian dollars or are converted to Canadian dollars.

For the non-resident travellers, the expenditures do not represent where money was spent on a specific trip, but rather how much money was spent, and in which category of expenditures. It is associated with the trip as a whole.

For resident travellers, two sets of expenditures are reported. One set includes a breakdown by category; another set includes a breakdown by country visited.

### **Fares**

For non-resident travellers, amount spent by all members of the travelling party on commercial transportation (plane, bus, train or boat) to travel to and out of Canada. For resident travellers, amount spent by all members of the travelling party on commercial transportation to travel out and back to Canada or outside Canada. Fares are reported in Canadian dollars or are converted to Canadian dollars. For travellers from the United States, both Canadian and U.S. fares are available. For travellers from countries other than the United States, only Canadian fares are available. For resident travellers, up to a maximum of 12 different fares are available according to the country of residency of the carrier used (including Canadian, U.S. and other foreign fares). For countries other than the United States, only the Canadian fare is available.

### **Census Metropolitan Area (CMA) and Census Agglomeration (CA)**

CMAs are defined as the main labour market area of an urbanized core having 100,000 or more population. Smaller urban areas, with an urban core with populations of at least 10,000 are defined as CAs. For more details, refer to the Standard Geographical Classification SGC 1996. The CMA and CA codes on the microdata file come from the 1991 SGC but they are defined according to the 1996 SGC definitions.

### **Census Division (CD)**

Areas established by provincial laws that are intermediate geographic areas between the municipality (Census Subdivision) and the province level. Census Divisions represent counties, regional districts, regional municipalities and other types of provincially legislated areas. For more details, refer to the Standard Geographical Classification SGC 1996.

### **Tourism Region (TR)**

From a touristic point of view, homogeneous regions defined by each province.



## SURVEY PROCESSING

Like all Statistics Canada surveys, the ITS has many processing stages. All mail-back and AES questionnaires are manually edited for completeness and consistency, and the reported data are captured, coded and verified. In particular, a certain amount of editing must be done involving the breakdown of expenses on package tours into spending components, the calculation of derived variables and the separation of reported data for trips that involved multiple entries into Canada.

A certain amount of data imputation is performed in the ITS. Missing transportation fares and/or total trip spending are imputed if the remainder of the fields on the questionnaire is valid.

Total imputation (i.e. imputation of complete questionnaires) is carried out for several Port Factor Groups (PFGs)<sup>3</sup> or strata that are outside the scope of questionnaire distribution. There are 71 American PFGs for which Statistics Canada never receives questionnaires. These PFGs refer to modes of entry that are not targeted by the questionnaire distribution (train, private plane or boat, motorcycle, bicycle, foot, etc.) or to ports of entry that do not participate in the distribution of questionnaires. For these out-of scope PFGs, the characteristics of travellers are estimated, using imputed questionnaires. These imputed questionnaires are duplicates of questionnaires that were obtained in 1990 for the same quarter and same PFGs.

Total imputation is also performed for any in-scope PFG for which we have received an insufficient number of questionnaires for the quarter. In these instances, all the questionnaires from the same quarter of the previous year that belong to the PFG are brought forward and added to the sample of that PFG for the reference quarter.

## WEIGHTING

U.S. questionnaires are assigned weights based on post-stratification into particular PFGs. These PFGs are combinations of durations of trip, modes of entry to Canada (e.g. by car for a same-day trip, one night, two or more nights, plane, train or others) and ports of entry that partition the U.S. travelling population. Due to low volumes of traffic, many ports are combined into one PFG; however, a PFG is always defined within a province. The questionnaires are weighted so that the weighted estimate of the number of travellers derived from these questionnaires matches the frontier count for each PFG.

For questionnaires completed by U.S. travellers who came through the international airports of Vancouver, Toronto, and Montreal, a second stage of weighting called the bias adjustment is done. It is based on information on the purpose and duration of trip obtained from a sample of E-311 cards filled by these travellers. The initial weights on these questionnaires are then adjusted to better reflect the distribution of these characteristics shown in the E-311 sample.

---

<sup>3</sup> In the International Travel Survey, the target populations (American, Overseas and Canadian international travellers) are partitioned into Port Factor Groups, based on selected traveller characteristics, such as country of residence, mode of entry and duration of stay.

## SURVEY ESTIMATION

For estimation purposes, the responses obtained through the questionnaire surveys must be treated as a simple random sample from the total traffic in each stratum (port or group of ports, by type of traffic, by quarter). The data may in fact be subject to some degree of «distribution bias» due to the fact that not all categories of travellers are represented in the distribution, or to a «non-response bias» due to the fact that the individuals replying may not be representative of the travelling population.

Weighting techniques used in the estimation process attempt to reduce the effect of biases. Responses are disaggregated by known characteristics into homogeneous groups. Using the calculated weights, estimates can be obtained for a variety of trip and traveller characteristics. These estimates take the form of totals, averages and percentages, and can be obtained at different geographical levels.

## SAMPLING VARIABILITY

The ITS is based on data gathered from only a part (sample) of the population. It is important to mention that results are only estimations of «true» values. These results are, therefore, only estimates of the «true» values for the travelling population, values which could only be obtained through a census. Since differences always exist between sample and census data, statistical measures have been developed which indicate the expected size of the differences. Such measures allow analysts to assess the reliability of statistics produced from sample surveys.

The expected difference between the sample estimate and the corresponding census value is known as the sampling variability. The coefficient of variation (CV) is the standard error of an estimate expressed as a percentage of the estimate. As a rule, the larger of two estimates will have a smaller CV, and therefore will be more reliable. Also, of two estimates of the same size, the one referring to a characteristic more evenly distributed throughout the population will tend to have a smaller CV.

Because of the complex nature of the ITS design, simple variance calculations using standard methods tend to under-estimate the variance. For the ITS, Statistics Canada uses the bootstrap method of variance estimation. Under this method, the sampling units are sub-sampled and re-weighted many times over (the ITS currently uses 200 bootstrap sub-samples). From these sub-samples an estimated variance is obtained to derive the CV.



## MICRODATA FILE

The microdata data file of the ITS contains information on the travel habits of United States residents travelling to Canada. Here are the different characteristics available on the United States microdata file:

### Trip characteristics:

- Date of entry and exit (Day, month, year)
- Canadian border crossing at entry and exit (land port, airport, seaport)
- Route used to enter and exit Canada
- Mode of transportation used to enter and exit Canada and while in Canada
- Purpose of trip
- Activities
- Rating of different aspects of trip in Canada (transportation, accommodation, hospitality of local people, value of money, variety of things to do and see)
- International transportation costs (fares paid to Canadian carriers and to American carriers)
- Total trip spending (less fares)
- Spending by category
- Percentage of expenditures paid personally by travellers, by business and by government
- Currency exchange rate
- Indicator of ownership of accommodation
- Indicator of first or previous visits to Canada
- Number of visits to Canada in the last five years
- Number of nights spent in Canada
- Number of nights by province
- Number of person-visits by province
- Place of residence (state and region)
- Travelling party size
- Port factor group code
- Person factor weight

### Demographic characteristics:

- Composition of travelling party by age group and sex

### Places visited:

- Place visited (province, tourism region, Census Metropolitan Area /Census Agglomeration, Census Division) (max. of 15)
- Length of stay in place visited (number of nights)
- Accommodations used in place visited

## WEIGHTING PROCEDURE

The *initial* ITS weighting procedure is based on *Person Factor Weight (PERSFAC)*, where:

$$\text{PERSFAC} = \frac{\text{Volume counts (Customs) of persons in the factor group}}{\text{Number of sampled persons in the factor group}}$$

Factor Groups (PFGRN) for United States Residents are *based on Mode of Transportation to enter Canada*.

For more details, please refer to the « *United States Port Factor Groups* » section.

<u>Mode</u>	<u>No. of Factor Groups</u>	<u>Factor Group Codes</u>
1) Automobile same day	25	001 - 027
2) Automobile one night	25	101 - 127
3) Automobile two or more nights	25	131 - 157
4) Plane commercial	15	201 - 215
5) Plane private same-day	11	240 - 250
6) Plane private one or more nights	11	251 - 261
7) Bus same-day	9	300 - 308
8) Bus one or more nights	9	310 - 318
9) Train	8	400 - 407
10) Boat commercial	9	500 - 509
11) Boat private same-day	11	530 - 540
12) Boat private one or more nights	11	541 - 551
13) Other methods	9	600 - 608

Once the initial weights are assigned, a *second* stage, called the *bias adjustment* is done to the initial weights of the questionnaires completed by U.S. travellers who came through the international airports of Vancouver, Toronto, and Montreal to better reflect the distribution of duration and purpose of their trip obtained from their E311 cards.

All information collected on the U.S. questionnaire refers specifically to the travelling party. The person weight is used to calculate all estimates.

The following section gives an overview of the U.S. weighting by components. For a more detailed explanation of ITS Weighting Methodology, please refer to subject matter area: Tourism Statistics Program, International Travel Section, Statistics Canada. Tel.: 613-951-9169 or 1-800-307-3382; Fax: 613-951-9040; (cult.tourstats@statcan.ca).



---

## **OVERVIEW**

### **U.S. WEIGHTING BY COMPONENTS**

---

## OVERVIEW - U.S. WEIGHTING BY COMPONENTS

**PERSFAC** = Person Factor Weight  
Field 963-978

**TSNUM** = Number of Persons included in spending  
Field 643-644

**RSPLACEC**

U.S. State of Residence

PERSFAC \* TSNUM

*See list of U.S. State Codes*

**USREGC**

U.S. Region of Residence

Addition of all weighted states

*See list of U.S. Region Codes*

**TPSIZE**

Travelling Party Size

PERSFAC \* TPSIZE or

PERSFAC \* TSNUM

**CDNENC-CDNEXC**

Canadian port of entry, exit

PERSFAC \* TSNUM

*See list of Canadian Custom ports*

**Males-Females**

Age and sex of travelling party

PERSFAC \* travellers by age and sex

*See age and sex distribution*

**RSN**

Main reason for trip

PERSFAC \* TSNUM

*See reason codes*

**ACT1-ACT19**

Activities of travelling party

PERSFAC \* no of responses \* TSNUM

*See activity codes*

*Note: Multiple Responses*

**CMPTR-CMPVR**

Rating of service

PERSFAC \* TSNUM for response



**VSPROV1-VSPROV15**

Places visited in Canada

PERSFAC \* no of visits \* TSNUM

**NTSVS1-NTSVS15**

Nights in place visited

PERSFAC \* no of nights \* TSNUM

**ACCVS1-ACCVS15**

Accommodation used in place visited

PERSFAC \* no of responses \* TSNUM

*Note: Multiple responses may be possible for each*

**OWNACC**

Indicator of ownership of accommodation

PERSFAC \* TSNUM for response

**TRNEN-TRNEX**

Transportation used on entry to  
or exit from Canada

PERSFAC \* TSNUM for response

*See mode of transportation codes*

**TRNIN1-TRNIN9**

Transportation while in Canada

PERSFAC \* no of responses \* TSNUM

*See mode of transportation codes*

*Note: Multiple responses*

**TOTSP**

Total spending in Canada

PERSFAC \* TOTSP

**SPAMT1-SPAMT5**

Spending estimate per category

PERSFAC \* spending estimate per category

*See spending categories*

**CDNFARE-USFARE**

Canadian and U.S. fares paid

PERSFAC \* FARES

---

## **U.S. RECORD LAYOUT**

---



<u>Position</u>	<u>Element</u>	<u>English Description</u>	<u>Codes</u>
17-23	RSPLACEC	<u>U.S. Place of Residence (State)</u>	7 digits
		Alabama	9743300
		Alaska	9743302
		Arizona	9743304
		Arkansas	9743306
		California	9743308
		Colorado	9743310
		Connecticut	9743312
		Delaware	9743314
		Washington D.C.	9743316
		Florida	9743318
		Georgia	9743320
		Hawaii	9743322
		Idaho	9743324
		Illinois	9743326
		Indiana	9743328
		Iowa	9743330
		Kansas	9743332
		Kentucky	9743334
		Louisiana	9743336
		Maine	9743338
		Maryland	9743340
		Massachusetts	9743342
		Michigan	9743344
		Minnesota	9743346
		Mississippi	9743348
		Missouri	9743350
		Montana	9743352
		Nebraska	9743354
		Nevada	9743356
		New Hampshire	9743358
		New Jersey	9743360
		New Mexico	9743362
		New York	9743364
		North Carolina	9743366
		North Dakota	9743368
		Ohio	9743370
		Oklahoma	9743372
		Oregon	9743374
		Pennsylvania	9743376
		Rhode Island	9743378
		South Carolina	9743380
		South Dakota	9743382
		Tennessee	9743384
		Texas	9743386
		Utah	9743388
		Vermont	9743390
		Virginia	9743392
		Washington	9743394
		West Virginia	9743396
		Wisconsin	9743397
		Wyoming	9743398

<u>Position</u>	<u>Element</u>	<u>English Description</u>	<u>Codes</u>
24-25	USREGC	<u>U.S. Region Code</u>	2 digits
		New England:	
		Maine	49
		New Hampshire	49
		Vermont	49
		Massachusetts	49
		Connecticut	49
		Rhode Island	49
		Middle Atlantic:	
		New York	50
		Pennsylvania	50
		New Jersey	50
		South Atlantic:	
		Maryland	51
		Delaware	51
		Washington D.C.	51
		West Virginia	51
		Virginia	51
		North Carolina	51
		South Carolina	51
		Georgia	51
		Florida	51
		East North Central:	
		Wisconsin	52
		Michigan	52
		Illinois	52
		Indiana	52
		Ohio	52
		West North Central:	
		North Dakota	53
		South Dakota	53
		Minnesota	53
		Iowa	53
		Nebraska	53
		Kansas	53
		Missouri	53
		East South Central:	
		Kentucky	54
		Tennessee	54
		Mississippi	54
		Alabama	54
		West South Central:	
		Oklahoma	55
		Arkansas	55
		Texas	55
		Louisiana	55



International Travel Survey

<u>Position</u>	<u>Element</u>	<u>English Description</u>	<u>Codes</u>
24-25	USREGC	<u>U.S. Region Code (continued)</u>	2 digits
		Mountain:	56
		Montana	56
		Idaho	56
		Wyoming	56
		Nevada	56
		Utah	56
		Colorado	56
		New Mexico	56
		Arizona	56
		Pacific:	57
		Washington	57
		Oregon	57
		California	57
		Alaska:	58
		Alaska	58
		Hawaii:	59
		Hawaii	59
51-54	CDNENC	<u>Code for CDN Entry Port</u> (See list of Canadian Custom Port Codes)	4 digits
55-62	DATEN	<u>Date of Entry (Day, Month, Year)</u>	8 digits
63-66	CDNEXC	<u>Code for CDN Exit Port</u> (See list of Canadian Custom Port Codes)	4 digits
67-74	DATEX	<u>Date of Exit (Day, Month, Year)</u>	8 digits
75-76	TPSIZE	<u>Travelling Party Size</u>	2 digits
		<u>Age and Sex Categories</u>	2 digits
77-78	M 0-1	Males under 2 years	
79-80	M 2-11	Males 2-11 years	
81-82	M 12-14	Males 12-14 years	
83-84	M 15-19	Males 15-19 years	
85-86	M 20-24	Males 20-24 years	
87-88	M 25-34	Males 25-34 years	
89-90	M 35-44	Males 35-44 years	
91-92	M 45-54	Males 45-54 years	
93-94	M 55-64	Males 55-64 years	
95-96	M 65-74	Males 65-74 years	
97-98	M 75 +	Males 75 years and over	
		<u>Age and Sex Categories</u>	2 digits
99-100	F 0-1	Females under 2 years	
101-102	F 2-11	Females 2-11 years	
103-104	F 12-14	Females 12-14 years	
105-106	F 15-19	Females 15-19 years	
107-108	F 20-24	Females 20-24 years	
109-110	F 25-34	Females 25-34 years	
111-112	F 35-44	Females 35-44 years	
113-114	F 45-54	Females 45-54 years	

International Travel Survey

<u>Position</u>	<u>Element</u>	<u>English Description</u>	<u>Codes</u>
		<u>Age and Sex Categories</u>	2 digits
115-116	F 55-64	Females 55-64 years	
117-118	F 65-74	Females 65-74 years	
119-120	F 75 +	Females 75 years and over	
121	AGEFLAG	<u>Indicator for Age</u> if age is stated if age is not stated	1 digit 0 1
122-123	RSN	<u>Main Reason for Trip</u> Meetings Convention, conference, trade show, seminar Other work Holiday, vacation Visit friends or relatives Visit second home, cottage, condo Attend events, attractions Personal (medical, wedding, etc) In transit to/from other countries Educational study Shopping Other Commuting to work Not stated	2 digits 01 02 03 04 05 06 07 08 09 10 11 12 13 99
	ACT	<u>Activities of Travelling Party</u>	2 digits
144-145	ACT 1	- visit friends or relatives	01
146-147	ACT 2	- attend a festival or fair	02
148-149	ACT 3	- attend a cultural performance (a play, a concert, etc)	03
150-151	ACT 4	- visit a museum or art gallery	04
152-153	ACT 5	- visit a historic site	05
154-155	ACT 6	- visit a zoo, aquarium or botanical garden	06
156-157	ACT 7	- attend a sports event	07
158-159	ACT 8	- go shopping	08
160-161	ACT 9	- go sightseeing	09
162-163	ACT 10	- go to a bar or night club	10
164-165	ACT 11	- go to a casino	11
166-167	ACT 12	- visit a theme or amusement park	12
168-169	ACT 13	- visit a national or provincial nature park	13
170-171	ACT 14	- participate in sports or outdoor activities	14
172-173	ACT 15	- boating - motor boat, sail boat, kayak, canoe or other	15
174-175	ACT 16	- golfing	16
176-177	ACT 17	- down hill skiing or snow boarding	17
178-179	ACT 18	- hunting	18
180-181	ACT 19	- fishing	19
		- not stated	99

International Travel Survey

<u>Position</u>	<u>Element</u>	<u>English Description</u>	<u>Codes</u>
		<u>Rating of Services</u>	
		Good    Average    Poor	2 digits
222-223	CMPTR	Transportation services	01    02    03
224-225	CMPAC	Accommodation services	01    02    03
226-227	CMPHP	Hospitality of local people	01    02    03
228-229	CMPVL	Value for your money	01    02    03
230-231	CMPVR	Variety of things to see and do	01    02    03
	VSPRCD	<u>Code for Province Visited (maximum of 15) (1991 SGC)</u>	7 digits
		First 2 digits = Province	2 digits
		Next 2 digits = Census Division	2 digits
	VSCMA	Next 3 digits = Census Metropolitan Area /Census Agglomeration	3 digits
	VSTRC	<u>Provincial Tourism Regions</u>	3 digits
	10 NFLD	1. Avalon	001
		2. Eastern	005
		3. Central	010
		4. Western	015
		5. Labrador	020
		6. Not stated (NFLD)	099
	11 PEI	1. PEI	101
	12 NS	1. Annapolis Valley	201
		2. South Shore	205
		3. Halifax-Dartmouth	210
		4. Eastern Shore	215
		5. Cape Breton	220
		6. Northumberland Shore	225
		7. Fundy Shore	230
		8. Not stated (NS)	299
	13 NB	1. Restigouche/Gloucester/Northumberland	301
		2. Kent/Westmorland/Albert	305
		3. Charlotte/Kings/Saint John	310
		4. York/Sunbury/Queens	315
		5. Madawaska/Victoria/Carleton	320
		6. Not stated (NB)	399
	24 QUE	1. Îles-de-la-Madeleine	401
		2. Gaspésie	405
		3. Bas-Saint-Laurent	410
		4. Québec	415
		5. Charlevoix	420
		6. Chaudière-Apalaches	425
		7. Centre du Québec	430
		8. Mauricie	435



<u>Position</u>	<u>Element</u>	<u>English Description</u>	<u>Codes</u>
		<u>Provincial Tourism Regions</u>	3 digits
		9. Cantons-de-l'est	440
		10. Montérégie	445
		11. Lanaudière	450
		12. Laurentides	455
		13. Montréal	460
		14. Outaouais	465
		15. Abitibi - Témiscamingue	470
		16. Saguenay - Lac-Saint-Jean	475
		17. Manicouagan	480
		18. Duplessis	485
		19. Nord-du-Québec	490
		20. Laval	495
		21. Not stated (Que)	499
	35	ONT	
		1. Essex	501
		2. Southwestern Ontario	505
		3. Niagara region	510
		4. South-Central Ontario	515
		5. Toronto and area	520
		6. Central Ontario	525
		7. St. Lawrence River Corridor	530
		8. Ottawa region	535
		9. Eastern Ontario	540
		10. North-Central	545
		11. North-East	550
		12. North-West	555
		13. Not stated (Ont)	599
	46	MAN	
		1. Winnipeg	601
		2. South East	605
		3. South Central	610
		4. South West	615
		5. North Central	620
		6. Parklands	625
		7. Interlake	630
		8. Northern	635
		9. Not stated (MAN)	699
	47	SASK	
		1. Southwestern	701
		2. Southeastern (without Regina)	705
		3. Regina	710
		4. West Central (without Saskatoon)	715
		5. Saskatoon	720
		6. East Central	725
		7. Northern	730
		8. Not stated (SASK)	799

<u>Position</u>	<u>Element</u>	<u>English Description</u>	<u>Codes</u>
		<u>Provincial Tourism Regions</u>	3 digits
	48 ALTA	1. Alberta's North	801
		2. Alberta's Heartland	805
		3. Edmonton and Area	810
		4. Alberta's Rockies	815
		5. Calgary and Area	820
		6. Alberta's South	825
		7. Not stated (ALTA)	899
	59 BC	1. The Islands	901
		2. Vancouver, Coast & Mountains	905
		3. Thompson - Okanagan	910
		4. B.C. Rockies	915
		5. Cariboo	920
		6. Northern B.C.	925
		7. Not stated (BC)	999
	60 YUK	1. Yukon	981
	61 NWT	1. Northwest Territories	991
		2. Nunavut	992
	NTSVS	<u>Nights in Place Visited (1-364)</u>	3 digits
	ACCVS	<u>Type of Accommodation in Place Visited</u> (all which apply otherwise blank)	6 digits
		Hotel	1
		Motel	2
		Home of friends or relatives	3
		Camping,	4
		Cottage or Cabin	5
		Other	6
232-235	VSPRCD1	Province Code and CD code for place visited	4 digits
236-238	VSCMA1	Census Metropolitan Area /Census Agglomeration code	3 digits
239-241	VSTRC1	Tourism region code	3 digits
242-244	NTSVS1	Total nights in place visited	3 digits
245-250	ACCVS1	Type of accommodation in place visited	6 digits
251-254	VSPRCD2	Province Code and CD code for place visited	4 digits
255-257	VSCMA2	Census Metropolitan Area /Census Agglomeration code	3 digits
258-260	VSTRC2	Tourism region code	3 digits
261-263	NTSVS2	Total nights in place visited	3 digits
264-269	ACCVS2	Type of accommodation in place visited	6 digits
270-273	VSPRCD3	Province Code and CD code for place visited	4 digits
274-276	VSCMA3	Census Metropolitan Area /Census Agglomeration code	3 digits
277-279	VSTRC3	Tourism region code	3 digits
280-282	NTSVS3	Total nights in place visited	3 digits
283-288	ACCVS3	Type of accommodation in place visited	6 digits

<u>Position</u>	<u>Element</u>	<u>English Description</u>	<u>Codes</u>
289-292	VSPRCD4	Province Code and CD code for place visited	4 digits
293-295	VSCMA4	Census Metropolitan Area /Census Agglomeration code	3 digits
296-298	VSTRC4	Tourism region code	3 digits
299-301	NTSVS4	Total nights in place visited	3 digits
302-307	ACCVS4	Type of accommodation in place visited	6 digits
308-311	VSPRCD5	Province Code and CD code for place visited	4 digits
312-314	VSCMA5	Census Metropolitan Area /Census Agglomeration code	3 digits
315-317	VSTRC5	Tourism region code	3 digits
318-320	NTSVS5	Total nights in place visited	3 digits
321-326	ACCVS5	Type of accommodation in place visited	6 digits
327-330	VSPRCD6	Province Code and CD code for place visited	4 digits
331-333	VSCMA6	Census Metropolitan Area /Census Agglomeration code	3 digits
334-336	VSTRC6	Tourism region code	3 digits
337-339	NTSVS6	Total nights in place visited	3 digits
340-345	ACCVS6	Type of accommodation in place visited	6 digits
346-349	VSPROV7	Province Code and CD code for place visited	4 digits
350-352	VSCMA7	Census Metropolitan Area /Census Agglomeration code	3 digits
353-355	VSTRC7	Tourism region code	3 digits
356-358	NTSVS7	Total nights in place visited	3 digits
359-364	ACCVS7	Type of accommodation in place visited	6 digits
365-368	VSPRCD8	Province Code and CD code for place visited	4 digits
369-371	VSCMA8	Census Metropolitan Area /Census Agglomeration code	3 digits
372-374	VSSGC8	Tourism region code	3 digits
375-377	NTSVS8	Total nights in place visited	3 digits
378-383	ACCVS8	Type of accommodation in place visited	6 digits
384-387	VSPRCD9	Province Code and CD code for place visited	4 digits
388-390	VSCMA9	Census Metropolitan Area /Census Agglomeration code	3 digits
391-393	VSTRC9	Tourism region code	3 digits
394-396	NTSVS9	Total nights in place visited	3 digits
397-402	ACCVS9	Type of accommodation in place visited	6 digits
403-406	VSPRCD10	Province Code and CD code for place visited	4 digits
407-409	VSCMA10	Census Metropolitan Area /Census Agglomeration code	3 digits
410-412	VSTRC10	Tourism region code	3 digits
413-415	NTSVS10	Total nights in place visited	3 digits
416-421	ACCVS10	Type of accommodation in place visited	6 digits
422-425	VSPRCD11	Province Code and CD code for place visited	4 digits
426-428	VSCMA11	Census Metropolitan Area /Census Agglomeration code	3 digits
429-431	VSTRC11	Tourism region code	3 digits
432-434	NTSVS11	Total nights in place visited	3 digits
435-440	ACCVS11	Type of accommodation in place visited	6 digits



<u>Position</u>	<u>Element</u>	<u>English Description</u>	<u>Codes</u>
441-444	VSPRCD12	Province Code and CD code for place visited	4 digits
445-447	VSCMA12	Census Metropolitan Area /Census Agglomeration code	3 digits
448-450	VSTRC12	Tourism region code	3 digits
451-453	NTSVS12	Total nights in place visited	3 digits
454-459	ACCVS12	Type of accommodation in place visited	6 digits
460-463	VSPRCD13	Province Code and CD code for place visited	4 digits
464-466	VSCMA13	Census Metropolitan Area /Census Agglomeration code	3 digits
467-469	VSTRC13	Tourism region code	3 digits
470-472	NTSVS13	Total nights in place visited	3 digits
473-478	ACCVS13	Type of accommodation in place visited	6 digits
479-482	VSPRCD14	Province Code and CD code for place visited	4 digits
483-485	VSCMA14	Census Metropolitan Area /Census Agglomeration code	3 digits
486-488	VSTRC14	Tourism region code	3 digits
489-491	NTSVS14	Total nights in place visited	3 digits
492-497	ACCVS14	Type of accommodation in place visited	6 digits
498-501	VSPRCD15	Province Code and CD code for place visited	4 digits
502-504	VSCMA15	Census Metropolitan Area /Census Agglomeration code	3 digits
505-507	VSTRC15	Tourism region code	3 digits
508-510	NTSVS15	Total nights in place visited	3 digits
511-516	ACCVS15	Type of accommodation in place visited	6 digits
517	OWNACC	<u>Indicator for Ownership of Accommodation</u>	1 digit
		Yes	1
		No	2
518	RTEN	<u>Route Used to Enter Canada</u>	1 digit
		From the USA only	1
		Directly from another country	2
519	RTEX	<u>Route Used to Exit Canada</u>	1 digit
		To USA only	1
		Directly to another country	2
520-521	TRNEN	<u>Mode of Transportation Used to Enter Canada</u>	2 digits
		Same Day Automobile	00
		Plane	01
		Train	02
		Boat	03
		Bus	04
		Private automobile	05
		Rented automobile	06
		Private plane	07
		Private boat	08
		Other	09

International Travel Survey

<u>Position</u>	<u>Element</u>	<u>English Description</u>	<u>Codes</u>
522-523	TRNEX	<u>Mode of Transportation Used to Exit Canada</u>	2 digits
		Same Day Automobile	00
		Plane	01
		Train	02
		Boat	03
		Bus	04
		Private automobile	05
		Rented automobile	06
		Private plane	07
		Private boat	08
		Other	09
	TRNIN	<u>Transportation Used While in Canada</u> (all which apply)	2 digits
524-525		Plane	01
526-527		Train	02
528-529		Boat	03
530-531		Bus	04
532-533		Private automobile	05
534-535		Rented automobile	06
536-537		Private plane	07
538-539		Private boat	08
540-541		Other	09
595-601	FCUREX	<u>Currency Exchange Rate</u> (Last 4 digits = decimal)	7 digits
628-635	TOTSP	<u>Total Spending</u>	8 digits
643-644	TSNUM	<u>Number of Persons Included in Spending</u>	2 digits
		<u>Spending Estimates Per Category</u>	8 digits
645-652	SPAMT1	Accommodation	8 digits
653-660	SPAMT2	Transportation in Canada	8 digits
661-668	SPAMT3	Food and Beverage	8 digits
669-676	SPAMT4	Recreation and Entertainment	8 digits
677-684	SPAMT5	Other (Souvenirs, shopping, photos, etc.)	8 digits
		<u>Percentage of expenditures</u>	3 digits
700-702	PCTPER	Percentage of expenditures paid PERSONALLY	
703-705	PCTBUS	Percentage of expenditures paid by BUSINESS	
706-708	PCTGOV	Percentage of expenditures paid by GOVERNMENT	
815-815	PVIND	<u>First visit to Canada (yes, No)</u>	1 digit
		YES	1
		NO	2
816-818	PVNUM	<u>How many times visited Canada (In the last 5 years)</u>	3 digits
846-848	PFGRNO	<u>Person Factor Group Code</u>	3 digits
869-871	TOTPERS	<u>Total Number of Persons</u>	3 digits

*International Travel Survey*

<u>Position</u>	<u>Element</u>	<u>English Description</u>	<u>Codes</u>
872-879	CDNFARE	<u>Canadian Fares Paid</u>	8 digits
880-887	USFARE	<u>U.S. Fares Paid</u>	8 digits
888-890	TOTDAYS	<u>Total Days in Canada</u>	3 digits
		<u>Nights in Provinces</u>	3 digits
891-893	NIGHTNF	Nights in NFLD	
894-896	NIGHTPE	Nights in PEI	
897-899	NIGHTNS	Nights in NS	
900-902	NIGHTNB	Nights in NB	
903-905	NIGHTPQ	Nights in QUE	
906-908	NIGHTON	Nights in ONT	
909-911	NIGHTMA	Nights in MAN	
912-914	NIGHTSA	Nights in SASK	
915-917	NIGHTAT	Nights in ALTA	
918-920	NIGHTBC	Nights in BC	
921-923	NIGHTYU	Nights in YUK	
924-926	NIGHTNW	Nights in NWT	
927-929	TPROVNGT	<u>Total nights in Canada</u>	3 digits
		<u>Person Visits Per Province</u>	2 digits
930-931	PERPRV1	Person visits in NFLD	
932-933	PERPRV2	Person visits in PEI	
934-935	PERPRV3	Person visits in NS	
936-937	PERPRV4	Person visits in NB	
938-939	PERPRV5	Person visits in QUE	
940-941	PERPRV6	Person visits in ONT	
942-943	PERPRV7	Person visits in MAN	
944-945	PERPRV8	Person visits in SASK	
946-947	PERPRV9	Person visits in ALTA	
948-949	PERPRV10	Person visits in BC	
950-951	PERPRV11	Person visits in YUK	
952-953	PERPRV12	Person visits in NWT	
954-956	TPERPRV	<u>Total Province Visits</u>	3 digits
957-962	TPERSN	<u>Total Person Nights</u>	6 digits
963-978	PERSFAC	<u>Person Weight Factor</u> (Last 7 digits = decimal)	16 digits



---

**UNITED STATES  
PORT FACTOR GROUPS**

---

## U.S. PORT FACTOR GROUPS

<u>AUTOMOBILE</u>				<u>PLANE</u>	
AUTO SAME DAY	AUTO 1 NIGHT	AUTO 2+ NIGHTS	PLANE COMMERCIAL	PLANE PRIVATE SAME DAY	PLANE PRIVATE 1+ NIGHTS
001 YARM	101 YARM	131 YARM	201 NFLD	240 NFLD	251 NFLD
002 S STE	102 S STE	132 S STE	202 NS	241 PEI	252 PEI
003 WOD R	103 WOD R	133 WOD R	203 PEI	242 NS	253 NS
004 OT NB	104 OT NB	134 OT NB	204 NB	243 NB	254 NB
005 LACOL	105 LACOL	135 LACOL	205 PQ	244 PQ	255 PQ
006 PHLBG	106 PHLBG	136 PHLBG	206 TOR 2	245 ONT	256 ONT
007 R IS	107 R IS	137 R IS	207 TOR 1	246 MAN	257 MAN
010 F ERI	110 F ERI	140 F ERI	208 OT ON	247 SASK	258 SASK
011 LAND	111 LAND	141 LAND	209 MAN	248 ALB	259 ALB
012 NIAG	112 NIAG	142 NIAG	210 SASK	249 BC	260 BC
013 SARNI	113 SARNI	143 SARNI	211 ALB	250 YUK	261 YUK
014 SS MA	114 SS MA	144 SS MA	212 VAN A		
015 WIND	115 WIND	145 WIND	213 OT BC		
016 OT ON	116 OT ON	146 OT ON	214 YUK		
017 EMERS	117 EMERS	147 EMERS	215 TOR 3		
018 OT MA	118 OT MA	148 OT MA			
019 SASK	119 SASK	149 SASK			
020 ALB	120 ALB	150 ALB			
021 ALDER	121 ALDER	151 ALDER			
022 HUNTG	122 HUNTG	152 HUNTG			
023 P HWY	123 P HWY	153 P HWY			
024 B BAY	124 B BAY	154 B BAY			
025 OT BC	125 OT BC	155 OT BC			
026 YUK	126 YUK	156 YUK			
027 OT PQ	127 OT PQ	157 OT PQ			
<u>BUS</u>				<u>BOAT</u>	<u>OTHER</u>
BUS SAME DAY	BUS 1+ NIGHTS	<u>TRAIN</u>	BOAT COMMERCIAL	BOAT PRIVATE SAME DAY	BOAT PRIVATE 1+ NIGHTS  OTHER METHODS
300 YARM	310 YARM	400 NB	500 NFLD	530 NFLD	541 NFLD 600 YARM
301 NB	311 NB	401 PQ	501 PEI	531 PEI	542 PEI 601 NB
302 PQ	312 PQ	402 ONT	502 NS	532 NS	543 NS 602 PQ
303 ONT	313 ONT	403 MAN	503 NB	533 NB	544 NB 603 ONT
304 MAN	314 MAN	404 SASK	504 PQ	534 PQ	545 PQ 604 MAN
305 SASK	315 SASK	405 ALB	506 ON	535 ONT	546 ONT 605 SASK
306 ALB	316 ALB	406 BC	507 BC	536 MAN	547 MAN 606 ALB
307 BC	317 BC	407 YUK	508 YUK	537 SASK	548 SASK 607 BC
308 YUK	318 YUK		509 MAN	538 ALB	549 ALB 608 YUK
				539 BC	550 BC
				540 YUK	551 YUK

**U.S. PORT FACTOR GROUPS  
BY MODE OF TRANSPORT AND CUSTOM PORTS**

MODE OF TRANSPORT	PROVINCE OF ENTRY	FACTOR GROUP	CUSTOM PORT(S)	ENGLISH
Automobile - Same day	Nova Scotia	001	1225	Yarmouth
		002	1311	St. Stephen
		003	1312	Woodstock Road
		004	13**	Other N.B.
	Quebec	005	2451	Lacolle - Route 15
			2481	Lacolle - Route 221
			2482	Lacolle - Route 223
		006	2428	Phillipsburg
		007	2414	Rock Island- Route 55
			2484	Rock Island- Route 143
			24**	Other Quebec
		027	3510	Ft. Erie
		010	3556	Lansdowne
		011	3525	Niagara Falls- Rainbow
	Ontario	012	3526	Niagara Falls- Whirlpool
			3527	Niagara Falls- Queenston
		013	3540	Sarnia
		014	3541	S. S. Marie
		015	3552	Windsor Ambassador Bridge
			3553	Windsor Tunnel
		016	35**	Other Ontario
		017	4600	Emerson - East
			4602	Emerson - West Lynne
		018	46**	Other Man.
	Saskatchewan	019	47**	Total Sask.
	Alberta	020	48**	Total Alta.
	British Columbia	021	5903	Aldergrove
		022	5917	Huntingdon
		023	5913	Pacific Highway
			5942	Douglas
		024	5915	Boundary Bay
		025	59**	Other B.C.
	Yukon	026	60**	Yukon



**U.S. PORT FACTOR GROUPS  
BY MODE OF TRANSPORT AND CUSTOM PORTS**

MODE OF TRANSPORT	PROVINCE OF ENTRY	FACTOR GROUP	CUSTOM PORT(S)	ENGLISH
Automobile - One night	Nova Scotia	101	1225	Yarmouth
		102	1311	St. Stephen
		103	1312	Woodstock Road
		104	13**	Other N.B.
	Quebec	105	2451	Lacolle - Route 15
			2481	Lacolle - Route 221
			2482	Lacolle - Route 223
		106	2428	Phillipsburg
		107	2414	Rock Island - Route 55
			2484	Rock Island - Route 143
		127	24**	Other Quebec
	Ontario	110	3510	Ft. Erie
		111	3556	Lansdowne
		112	3525	Niagara Falls - Rainbow
			3526	Niagara Falls - Whirlpool
			3527	Niagara Falls - Queenston
		113	3540	Sarnia
		114	3541	S. S. Marie
		115	3552	Windsor Ambassador Bridge
			3553	Windsor Tunnel
		116	35**	Other Ontario
	Manitoba	117	4600	Emerson - East
			4602	Emerson - West Lynne
		118	46**	Other Man.
	Saskatchewan	119	47**	Sask.
	Alberta	120	48**	Alta.
	British Columbia	121	5903	Aldergrove
		122	5917	Huntingdon
		123	5913	Pacific Highway
			5942	Douglas
		124	5915	Boundary Bay
	Yukon	125	59**	Other B.C.
		126	60**	Yukon

**U.S. PORT FACTOR GROUPS  
BY MODE OF TRANSPORT AND CUSTOM PORTS**

MODE OF TRANSPORT	PROVINCE OF ENTRY	FACTOR GROUP	CUSTOM PORT(S)	ENGLISH
Automobile - 2 or more nights	Nova Scotia	131	1225	Yarmouth
		132	1311	St. Stephen
		133	1312	Woodstock Road
		134	13**	Other N.B.
	Quebec	135	2451	Lacolle - Route 15
			2481	Lacolle - Route 221
			2482	Lacolle - Route 223
		136	2428	Phillipsburg
		137	2414	Rock Island - Route 55
			2484	Rock Island - Route 143
		157	24**	Other Quebec
		140	3510	Ft. Erie
		141	3556	Lansdowne
		142	3525	Niagara Falls - Rainbow
	Ontario		3526	Niagara Falls - Whirlpool
			3527	Niagara Falls - Queenston
		143	3540	Sarnia
		144	3541	S. S. Marie
		145	3552	Windsor Ambassador Bridge
			3553	Windsor Tunnel
		146	35**	Other Ontario
		147	4600	Emerson - East
			4602	Emerson - West Lynne
		148	46**	Other Man.
	Saskatchewan	149	47**	Total Sask.
	Alberta	150	48**	Total Alta.
	British Columbia	151	5903	Aldergrove
		152	5917	Huntingdon
		153	5913	Pacific Highway
			5942	Douglas
		154	5915	Boundary Bay
		155	59**	Other B.C.
	Yukon	156	60**	Yukon

**U.S. PORT FACTOR GROUPS  
BY MODE OF TRANSPORT AND CUSTOM PORTS**

MODE OF TRANSPORT	PROVINCE OF ENTRY	FACTOR GROUP	CUSTOM PORT(S)	ENGLISH
Plane - Commercial	Newfoundland	201	10**	Nfld.
	Nova Scotia	202	12**	N.S.
	P.E.I.	203	11**	P.E.I.
	New Brunswick	204	13**	N.B.
	Quebec	205	24**	Que.
	Ontario	206	3575	Toronto 2
		207	3597	Toronto 1
		208	35**	Other Ontario
		209	46**	Manitoba
	Saskatchewan	210	47**	Sask.
	Alberta	211	48**	Alta.
	British Columbia	212	5909	Vanc. Airport
		213	59**	Other B.C.
	Yukon	214	60**	Yukon
	Ontario	215	3565	Toronto 3
Plane - Private Same day	Newfoundland	240	10**	Nfld.
	P.E.I.	241	11**	P.E.I.
	Nova Scotia	242	12**	N.S.
	New Brunswick	243	13**	N.B.
	Quebec	244	24**	Que.
	Ontario	245	35**	Ont.
	Manitoba	246	46**	Man.
	Saskatchewan	247	47**	Sask.
	Alberta	248	48**	Alta.
	British Columbia	249	59**	B.C.
Plane - Private 1 or more nights	Yukon	250	60**	Yukon
	Newfoundland	251	10**	Nfld.
	P.E.I.	252	11**	P.E.I.
	Nova Scotia	253	12**	N.S.
	New Brunswick	254	13**	N.B.
	Quebec	255	24**	Que.
	Ontario	256	35**	Ont.
	Manitoba	257	46**	Man.
	Saskatchewan	258	47**	Sask.
	Alberta	259	48**	Alta.
	British Columbia	260	59**	B.C.
	Yukon	261	60**	Yukon



**U.S. PORT FACTOR GROUPS  
BY MODE OF TRANSPORT AND CUSTOM PORTS**

MODE OF TRANSPORT	PROVINCE OF ENTRY	FACTOR GROUP	CUSTOM PORT(S)	ENGLISH
Bus - Same day	Nova Scotia	300	1225	Yarmouth
	New Brunswick	301	13**	N.B.
	Quebec	302	24**	Que.
	Ontario	303	35**	Ont.
	Manitoba	304	46**	Man.
	Saskatchewan	305	47**	Sask.
	Alberta	306	48**	Alta.
	British Columbia	307	59**	B.C.
Bus - One or more nights	Yukon	308	60**	Yukon
	Nova Scotia	310	1225	Yarmouth
	New Brunswick	311	13**	N.B.
	Quebec	312	24**	Que.
	Ontario	313	35**	Ont.
	Manitoba	314	46**	Man.
	Saskatchewan	315	47**	Sask.
	Alberta	316	48**	Alta.
Train	British Columbia	317	59**	B.C.
	Yukon	318	60**	Yukon
	New Brunswick	400	13**	N.B.
	Quebec	401	24**	Que.
	Ontario	402	35**	Ont.
	Manitoba	403	46**	Man.
	Saskatchewan	404	47**	Sask.
	Alberta	405	48**	Alta.
Boat - Commercial	British Columbia	406	59**	B.C.
	Yukon	407	60**	Yukon
	Newfoundland	500	10**	Nfld.
	P.E.I.	501	11**	P.E.I.
	Nova Scotia	502	12**	N.S.
	New Brunswick	503	13**	N.B.
	Quebec	504	24**	Que.
	Ontario	506	35**	Ont.
	British Columbia	507	59**	B.C.
	Yukon	508	60**	Yukon
	Manitoba	509	46**	Man.

**U.S. PORT FACTOR GROUPS  
BY MODE OF TRANSPORT AND CUSTOM PORTS**

MODE OF TRANSPORT	PROVINCE OF ENTRY	FACTOR GROUP	CUSTOM PORT(S)	ENGLISH
Boat - Private Same day	Newfoundland	530	10**	Nfld.
	P.E.I.	531	11**	P.E.I.
	Nova Scotia	532	12**	N.S.
	New Brunswick	533	13**	N.B.
	Quebec	534	24**	Que.
	Ontario	535	35**	Ont.
	Manitoba	536	46**	Man.
	Saskatchewan	537	47**	Sask.
	Alberta	538	48**	Alta.
	British Columbia	539	59**	B.C.
	Yukon	540	60**	Yukon
Boat - Private 1 or more nights	Newfoundland	541	10**	Nfld.
	P.E.I.	542	11**	P.E.I.
	Nova Scotia	543	12**	N.S.
	New Brunswick	544	13**	N.B.
	Quebec	545	24**	Que.
	Ontario	546	35**	Ont.
	Manitoba	547	46**	Man.
	Saskatchewan	548	47**	Sask.
	Alberta	549	48**	Alta.
	British Columbia	550	59**	B.C.
	Yukon	551	60**	Yukon
Other Methods	Nova Scotia	600	1225	Yarmouth
	New Brunswick	601	13**	N.B.
	Quebec	602	24**	Que.
	Ontario	603	35**	Ont.
	Manitoba	604	46**	Man.
	Saskatchewan	605	47**	Sask.
	Alberta	606	48**	Alta.
	British Columbia	607	59**	B.C.
	Yukon	608	60**	Yukon

---

**CANADIAN CUSTOM  
PORTS LIST**

---



# CANADA CUSTOMS CODES

## Terre-Neuve

1000 CLARENVILLE  
1010 GRAND FALLS  
1011 CORNER BROOK  
1012 GANDER  
1013 GOOSE BAY  
1014 ST. JOHN'S  
1015 BOTWOOD  
1016 LEWISPORTE  
1017 PORT-AUX-BASQUES  
1018 STEPHENVILLE  
1019 FORTUNE  
1020 BURIN  
1021 ARGENTIA  
1022 HARBOUR GRACE  
1023 GRAND BANK

## Île-du-Prince-Édouard

1101 CHARLOTTETOWN  
1102 SUMMERSIDE  
1103 MONTAGUE

## Nouvelle-Écosse

1201 AMHERST  
1203 ANTIGONISH  
1204 BADDECK  
1206 BRIDGEWATER  
1208 DIGBY  
1209 HALIFAX  
1210 KENTVILLE  
1211 LIVERPOOL  
1213 LUNENBURG  
1214 MIDDLETON  
1215 NEW GLASGOW  
1216 NORTH SYDNEY  
1219 PORT HAWKESBURY  
1220 SHELBURNE  
1221 SYDNEY  
1224 WINDSOR  
1225 YARMOUTH

## New Brunswick

1301 BATHURST  
1304 FREDERICTON  
1305 MCADAM  
1306 MONCTON  
1307 MIRAMICHI  
1309 ST. ANDREWS  
1310 SAINT JOHN  
1311 ST. STEPHEN  
1312 WOODSTOCK ROAD  
1313 EDMUNDSTON  
1314 ANDOVER  
1315 CENTREVILLE  
1316 CLAIR  
1317 GRAND FALLS  
1318 ST. LEONARD  
1319 RIVER DE CHUTE  
1321 CARAQUET  
1322 DALHOUSIE  
1323 SUSSEX  
1324 GRAND MANAN  
1325 CAMPOBELLO  
1326 WILSON'S BEACH  
1327 BLACK'S HARBOUR  
1328 BLOOMFIELD  
1330 MILLTOWN  
1331 ST. CROIX  
1333 FOUR FALLS  
1334 FOREST CITY  
1335 FOSTERVILLE  
1337 GILLESPIE

Québec

2401 CHICOUTIMI  
 2402 HERDMAN  
 2403 DRUMMONDVILLE  
 2404 GASPÉ  
 2405 GRANBY  
 2406 HULL  
 2407 HUNTINGDON  
 2408 LAC MÉGANTIC  
 2409 WOBURN  
 2410 PASPÉBIAC  
 2411 JEAN LESAGE AIRPORT  
 2412 QUÉBEC SEA  
 2413 RIMOUSKI  
 2414 ROCK ISLAND ROUTE 55  
 2415 SHAWINIGAN  
 2416 SHERBROOKE  
 2417 SOREL  
 2419 MATANE  
 2420 ST. HYACINTHE  
 2421 ST. JEAN  
 2422 TROIS RIVIÈRES  
 2423 VALLEYFIELD  
 2424 FRANKLIN CENTRE  
 2425 AMOS  
 2426 FARNHAM  
 2427 VICTORIAVILLE  
 2428 PHILLIPSBURG  
 2429 ARMSTRONG  
 2430 DUNDEE  
 2431 POHENEGAMOOK  
 2432 FRELIGHTSBURG  
 2433 HEMMINGFORD  
 2434 HIGHWATER  
 2435 DAAQUAM  
 2436 MAGOG  
 2437 NOYAN  
 2438 CLARENCEVILLE  
 2439 LA BAIE  
 2440 RIVIÈRE-DU-LOUP  
 2441 LAC MEMPHRÉMAGOG  
 2442 JOLIETTE  
 2443 LACHUTE  
 2444 MONTMAGNY  
 2445 RICHMOND  
 2446 ST. JÉRÔME  
 2447 THETFORD MINES  
 2448 LÉVIS  
 2449 ROUYN

2450 VAL-D'OR  
 2451 LACOLLE ROUTE 15  
 2452 TROUT RIVER  
 2453 CHAMBORD  
 2454 STANHOPE  
 2455 BAIE COMEAU  
 2456 COWANSVILLE  
 2457 LA TUQUE  
 2458 LOUISVILLE  
 2459 MARIEVILLE  
 2460 NICOLET  
 2461 SEPT-ÎLES  
 2462 HEREFORD EST  
 2463 CAP-AUX-MEULES  
 2464 HEREFORD ROAD  
 2465 COVEY HILL  
 2466 ABERCORN  
 2467 BEEBE  
 2468 CHARTIERVILLE  
 2469 PINNACLE EST  
 2470 ST. HUBERT  
 2471 GLEN SUTTON  
 2472 JAMIESON'S LINE  
 2474 MORSES LINES  
 2475 ST. PAMPHILE  
 2480 STE AURÉLIE  
 2481 LACOLLE ROUTE 221  
 2482 LACOLLE ROUTE 223  
 2484 ROCK ISLAND ROUTE 143  
 2496 MONTRÉAL - DORVAL  
 2498 MONTRÉAL - SEAPORT  
 2499 MONTRÉAL - MIRABEL

Ontario

3500 BASSWOOD LAKE  
 3501 AMHERSTBURG  
 3502 BELLEVILLE/NAPANEE  
 3503 BOWMANVILLE  
 3504 BRANTFORD  
 3505 BROCKVILLE  
 3506 CHATHAM  
 3507 COBOURG  
 3508 COLLINGWOOD  
 3509 CORNWALL  
 3510 FORT ERIE

Ontario (continued)

3511	FORT FRANCES	3559	BARRIE
3512	CYCLONE ISLAND	3560	BRACEBRIDGE
3513	GALT	3561	COBALT
3514	GANANOQUE	3562	COCHRANE
3515	GODERICH	3563	PORT METCALFE
3516	GUELPH	3564	LEAMINGTON
3517	HAMILTON	3565	TORONTO INTERNATIONAL AIRPORT 3
3518	GORE BAY	3566	SOUTHAMPTON
3519	KENORA	3567	TIMMINS
3520	KINGSTON	3568	LISTOWEL
3521	KITCHENER	3569	PEMBROKE
3522	LINDSAY	3570	PERTH
3523	LONDON	3571	PORT COLBORNE
3524	MIDLAND	3572	RAINY RIVER
3525	NIAGARA FALLS RAINBOW	3573	RENFREW
3526	NIAGARA FALLS WHIRLPOOL	3574	SMITH FALLS
3527	NIAGARA FALLS QUEENSTON	3575	TORONTO INTERNATIONAL AIRPORT 2
3528	NORTH BAY	3576	OAKVILLE
3529	ORILLIA	3577	PRAIRIE PORTAGE
3530	OSHAWA	3578	RICHARDS LANDING
3531	MACDONALD CARTIER INTERNATIONAL AIRPORT-- Ottawa	3579	ACTON
3532	OWEN SOUND	3580	BRAMPTON
3533	PARIS	3581	CARLETON PLACE
3534	PARRY SOUND	3582	DUNDVILLE
3535	PETERBOROUGH	3583	GEORGETOWN
3536	PICTON	3584	HANOVER
3537	THUNDER BAY	3585	LITTLE CURRENT
3538	PORT HOPE	3586	NEWMARKET (Buttonville)
3539	PRESCOTT	3587	ORANGEVILLE
3540	SARNIA	3588	SAGANAGA LAKE
3541	SAULT STE. MARIE	3589	NANTICOKE
3542	SIMCOE	3590	SAND BAY
3543	STRATFORD	3592	WOODSTOCK
3544	SUDBURY	3593	SAND POINT LAKE
3545	ST. CATHERINES	3594	ARNPRIOR
3546	ST. THOMAS	3595	WALPOLE ISLAND
3547	TILLSONBURG	3596	MELDRUM BAY
3548	PELEE ISLAND	3597	TORONTO INTERNATIONAL AIRPORT 1
3549	TRENTON	3598	TORONTO SEAPORT / ISLAND AIRPORT
3550	WALLACEBURG	3599	SOMBRA
3551	WELLAND		
3552	WINDSOR AMBASSADOR BRIDGE		
3553	WINDSOR TUNNEL		
3554	WALKERVILLE		
3555	PIGEON RIVER		
3556	LANSDOWNE		
3557	THOROLD		
3558	POINT ALEXANDRIA		



Manitoba

4600 EMERSON EAST  
 4601 BRANDON  
 4602 EMERSON-WEST LYNNE  
 4603 GRETNA  
 4604 WINNIPEG  
 4605 SPRAGUE  
 4606 THE PAS  
 4607 BOISSEVAIN  
 4608 COULTER  
 4609 CRYSTAL CITY  
 4610 CARTWRIGHT  
 4611 CHURCHILL  
 4612 GOODLANDS  
 4613 LENA  
 4614 LYLETON  
 4615 PINEY  
 4616 SNOWFLAKE  
 4617 SOUTH JUNCTION  
 4618 TOLSTOI  
 4619 WINDYGATES  
 4620 WINKLER

Alberta

4801 CALGARY AIRPORT  
 4802 EDMONTON AIRPORT  
 4803 LETHBRIDGE  
 4804 MEDICINE HAT  
 4805 COUTTS  
 4806 ADEN  
 4807 CARWAY  
 4808 CHIEF MOUNTAIN  
 4809 DEL BONITA  
 4810 RED DEER  
 4811 WILD HORSE

British Columbia

5901 CRANBROOK  
 5902 ROOSVILLE  
 5903 ALDERGROVE  
 5904 NANAIMO  
 5905 NELSON  
 5906 BEDWELL HARBOUR  
 5907 PENTICTON  
 5908 PRINCE RUPERT  
 5909 VANCOUVER AIRPORT  
 5910 VANCOUVER SEAPORT

Saskatchewan

4701 MOOSE JAW  
 4702 NORTH PORTAL  
 4703 PRINCE ALBERT  
 4704 REGINA  
 4705 JOHN DIEFENBAKER AIRPORT – Saskatoon  
 4706 NORTH BATTLEFORD  
 4707 NORTHGATE  
 4708 SWIFT CURRENT  
 4709 YORKTON  
 4710 ESTEVAN  
 4711 WEYBURN  
 4712 BIG BEAVER  
 4713 CARIEVALE  
 4714 CLIMAX  
 4715 CORONACH  
 4716 MONCHY  
 4717 OUNGRE  
 4718 REGWAY  
 4719 TORQUAY  
 4720 WEST POPLAR RIVER  
 4721 WILLOW CREEK

British Columbia (continued)

5911 VICTORIA  
 5912 TRAIL  
 5913 PACIFIC HIGHWAY  
 5914 KAMLOOPS  
 5915 BOUNDARY BAY  
 5916 CASCADE  
 5917 HUNTINGDON  
 5918 KINGSGATE  
 5919 OSOYOOS  
 5920 PRINCE GEORGE  
 5921 CAMPBELL RIVER  
 5922 CARSON  
 5923 VERNON  
 5925 PORT ALBERNI  
 5926 POWELL RIVER  
 5927 KITIMAT  
 5929 CHILLIWACK  
 5930 COURTENAY  
 5931 KELOWNA  
 5932 CHOPAKA  
 5933 MIDWAY  
 5934 NELWAY  
 5935 NEW WESTMINSTER

International Travel Survey

---

British Columbia (continued)

5936 PATERSON  
5937 RYKERT  
5938 SIDNEY  
5939 STEWART  
5940 WANETA  
5942 DOUGLAS

Northwest Territories, Yukon and Nunavut

6080 IQUALUIT  
6090 WHITEHORSE – FRASER  
6091 BEAVER CREEK  
6092 DAWSON / LITTLE GOLD  
6093 OLD CROW  
6094 PLEASANT CAMP

## MULTIPLE PORTS

## CANADIAN PORTS OF EXIT (CDNEXC)

Listed below are multiple ports indicated by X in the port of exit code "CDNEXC"

MULTIPLE CODE	PORT	PORT CODE
13XX	ST. STEPHEN, N.B. MILLTOWN, N.B.	1311 1330
241X	MONTREAL-DORVAL, QUE. MONTREAL-SEAPORT, QUE. MONTREAL-MIRABEL, QUE.	2496 2498 2499
242X	JEAN LESAGE AIRPORT, QUE. QUEBEC SEA, QUE	2411 2412
351X	NIAGARA FALLS RAINBOW, ONT. NIAGARA FALLS WHIRLPOOL, ONT. NIAGARA FALLS QUEENSTON, ONT.	3525 3526 3527
352X	TORONTO INT. AIRPORT T3, ONT. TORONTO INT. AIRPORT T2, ONT. TORONTO INT. AIRPORT T1, ONT. TORONTO SEAPORT/ISLAND AIRPORT, ONT.	3565 3575 3597 3598
353X	WINDSOR AMBASSADOR BRIDGE, ONT. WINDSOR TUNNEL, ONT.	3552 3553
591X	VANCOUVER AIRPORT, B.C. VANCOUVER SEAPORT, B.C.	5909 5910



---

**U.S. STATES AND  
REGIONS LIST**

---

**U.S. STATE CODES**

Alabama	9743300
Alaska	9743302
Arizona	9743304
Arkansas	9743306
California	9743308
Colorado	9743310
Connecticut	9743312
Delaware	9743314
Washington D.C.	9743316
Florida	9743318
Georgia	9743320
Hawaii	9743322
Idaho	9743324
Illinois	9743326
Indiana	9743328
Iowa	9743330
Kansas	9743332
Kentucky	9743334
Louisiana	9743336
Maine	9743338
Maryland	9743340
Massachusetts	9743342
Michigan	9743344
Minnesota	9743346
Mississippi	9743348
Missouri	9743350
Montana	9743352
Nebraska	9743354
Nevada	9743356
New Hampshire	9743358
New Jersey	9743360
New Mexico	9743362
New York	9743364
North Carolina	9743366
North Dakota	9743368

**U.S. STATE CODES**

Ohio	9743370
Oklahoma	9743372
Oregon	9743374
Pennsylvania	9743376
Rhode Island	9743378
South Carolina	9743380
South Dakota	9743382
Tennessee	9743384
Texas	9743386
Utah	9743388
Vermont	9743390
Virginia	9743392
Washington	9743394
West Virginia	9743396
Wisconsin	9743397
Wyoming	9743398



**U.S. REGION CODES**

New England:	Maine	49
	New Hampshire	49
	Vermont	49
	Massachusetts	49
	Connecticut	49
	Rhode Island	49
Middle Atlantic:	New York	50
	Pennsylvania	50
	New Jersey	50
South Atlantic:	Maryland	51
	Delaware	51
	Washington D.C.	51
	West Virginia	51
	Virginia	51
	North Carolina	51
	South Carolina	51
	Georgia	51
	Florida	51
East North Central:	Wisconsin	52
	Michigan	52
	Illinois	52
	Indiana	52
	Ohio	52
West North Central:	North Dakota	53
	South Dakota	53
	Minnesota	53
	Iowa	53
	Nebraska	53
	Kansas	53
	Missouri	53

**U.S. REGION CODES**

East South Central:	Kentucky	54
	Tennessee	54
	Mississippi	54
	Alabama	54
West South Central:	Oklahoma	55
	Arkansas	55
	Texas	55
	Louisiana	55
Mountain:	Montana	56
	Idaho	56
	Wyoming	56
	Nevada	56
	Utah	56
	Colorado	56
	New Mexico	56
	Arizona	56
Pacific:	Washington	57
	Oregon	57
	California	57
Alaska:	Alaska	58
Hawaii:	Hawaii	59

---

**TOURISM REGIONS  
LIST**

---



**TOURISM REGIONS**

10 NFLD	001 Avalon 005 Bonavista-Burin 010 Central 015 Western 020 Labrador
11 PEI	101 PEI
12 NS	201 Annapolis Valley 205 South Shore 210 Halifax-Dartmouth 215 Eastern Shore 220 Cape Breton 225 Northumberland Shore 230 Fundy Shore
13 NB	301 Restigouche/Gloucester/Northumberland 305 Kent/Westmorland/Albert 310 Charlotte/Kings/Saint John 315 York/Sunbury/Queens 320 Madawaska/Victoria/Carleton
24 QUE	401 Îles-de-la-Madeleine 405 Gaspésie 410 Bas-Saint-Laurent 415 Québec 420 Charlevoix 425 Chaudière-Apalaches 430 Centre du Québec 435 Mauricie 440 Cantons-de-l'est 445 Montérégie 450 Lanaudière 455 Laurentides 460 Montréal

**TOURISM REGIONS**

24 QUE

465 Outaouais  
470 Abitibi - Témiscamingue  
475 Saguenay - Lac-Saint-Jean  
480 Manicouagan  
485 Duplessis  
490 Nord-du-Québec  
495 Laval

35 ONT

501 Essex  
505 Southwestern Ontario  
510 Niagara region  
515 South-Central Ontario  
520 Toronto and area  
525 Central Ontario  
530 St.Lawrence River Corridor  
535 Ottawa region  
540 Eastern Ontario  
545 North-Central  
550 North-East  
555 North-West

46 MAN

601 Winnipeg  
605 South East  
610 South Central  
615 South West  
620 North Central  
625 Parklands  
630 Interlake  
635 Northern

**TOURISM REGIONS**

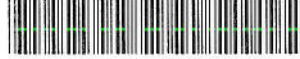
47 SASK	701 Southwestern 705 Southeastern (without Regina) 710 Regina 715 West Central (without Saskatoon) 720 Saskatoon 725 East Central 730 Northern
48 ALTA	801 Alberta's North 805 Alberta's Heartland 810 Edmonton and Area 815 Alberta's Rockies 820 Calgary and Area 825 Alberta's South
59 BC	901 The Islands 905 Vancouver, Coast & Mountains 910 Thompson - Okanagan 915 B.C. Rockies 920 Cariboo 925 Northern B.C.
60 YUK	981 Yukon
61 NWT	991 Northwest Territories 992 Nunavut







STATISTICS CANADA LIBRARY  
BIBLIOTHÈQUE STATISTIQUE CANADA



1010715799