

Feedback

Canadian Aviation Service Difficulty Reports

The following content was published between April 13, 2017 and July 12, 2017.

Table of Contents

Head's Up	2
Swearingen, SA226TC	2
Elevator Bolt Failure.....	2
Fixed Wing.....	3
de Havilland DHC-8-400.....	3
In-flight Shutdown Due to Damaged Exhaust.....	3
Engine	4
Teledyne Continental, IO-550-D	4
Engine Components International (ECI) Cylinder Malfunction	4
Rotorcraft.....	5
Helicopter Technology Company, Equipment.....	5
Delamination of Main Rotor Blade Abrasion Strip.....	5
Bell Textron - Canada, 429.....	6
Pitch Restraint Spring Debonding	6
Bell Textron - Canada, 206B	7
Cracked Aft Fuselage Frame	7
Robinson, R66.....	8
Tail Rotor Driveshaft Bearing Overheating	8
Equipment Airworthiness Directives (ADs)	8
Suspected Unapproved Parts (SUPs)	9
FAA Special Airworthiness Information Bulletins (SAIB).....	10
EASA Safety Information Bulletin (SIB).....	10
Service Difficulty Reports (SDR)	11

Head's Up

Swearingen, SA226TC

Elevator Bolt Failure

SDR #: 20140212007

Subject:

A Canadian operator experienced a complete loss of elevator control because of a failure of the bolt attaching the elevator control rod to the elevator walking beam under the cockpit floor. Due to this event, the FAA issued Airworthiness Directive AD 2015-19-10, which supersedes AD 97-02-02 and applies to models SA26-AT, SA26-T, SA226-AT, SA226-T, SA226-T(B), SA226-TC, SA227-AC (C-26A), SA227-AT, SA227-BC (C-26A), SA227-CC, SA227-DC (C-26B), and SA227-TT aeroplanes. AD 97-02-02 required applying torque to the control column pitch bearing attaching nuts, inspecting the bearing assembly, inspecting the elevator control rod end bearing retainer/dust seals, and replacing or installing new parts as necessary. This new AD requires inspecting for movement and correct torque of the elevator the elevator control pivot bearing, inspecting the elevator rod bolt and requires replacement of the control column pivot bearing with improved design by 35 000 hours time in service.

A follow-up inspection of the operator's fleet revealed a variety of hardware installed. Some hardware matched the illustrated parts catalog (IPC), some matched the AD 97-02-02 configuration, and some matched neither of those configurations.

When AD 97-02-02 was issued, the IPC was never revised to match the hardware configuration called out in AD 97-02-02 or in the service information associated with that AD. Because of the conflict between the AD and the IPC configurations, an aeroplane that was in compliance with the requirements of AD 97-02-02 could have had an incorrect hardware configuration installed during routine maintenance after complying with the AD. The IPC has been subsequently updated and corrected by M7 Aerospace, LLC.

Additionally, since the issue of AD 97-02-02, the manufacturer developed an improved design for the control column pivot bearing and support structure that terminates the repetitive torque check and replacement of control column pivot bearings.

The manufacturer also issued new service information that adds the 10 000-hour time in service (TIS) repetitive replacement of the control column pivot bearing to the airworthiness limitations section (ALS) of the aircraft maintenance manual (AMM) and requires the replacement of the pivot bearing with the improved design within 35 000 hours TIS as part of the supplemental inspections document (SID). Issue of the new service information, the revised IPC, and AD 2015-02-02 will eliminate the conflicts between AD 97-02-02, the service information, the IPC, the ALS, and the SID.

AD 2015-19-10 does not retain any of the requirements of AD 97-02-02. It requires inspecting for movement and correct torque of the elevator control pivot bearing, inspecting the elevator control rod for damage, and replacing parts as necessary. This AD also requires a 10 000-hour time in service repetitive replacement of the control column pivot bearing and require replacement of the control column pivot bearing with the improved design within 35 000 hours time in service.

Fixed Wing

de Havilland DHC-8-400

In-flight Shutdown Due to Damaged Exhaust

SDR #: 20160928011

Subject:

During a climb at approximately 5500ft, the fire bell sounded and the left hand engine fire indication illuminated. After reducing power, the indication extinguished at approximately 50% engine power. The crew shut the engine down without discharging the fire bottles and returned to base. All engine parameters were observed as normal prior to the fire warning.

Troubleshooting by maintenance found the left hand inner exhaust separated at the center flange due to prior removal and installation by maintenance. A new exhaust assembly was then installed.

Transport Canada Comments:

An in-flight shutdown and damage to the parts was caused by improper maintenance. It is important that maintenance personnel follow instructions published by the manufacturer and take time to inspect the work. There is no evidence that this incident was caused by human factors, however it reminds us that the person doing the work could be distracted, fatigued or pressured to get the work done.

Transport Canada Civil Aviation (TCCA) recommends having someone inspect your work before close up in order to minimize the risk of faulty workmanship.



Engine

Teledyne Continental, IO-550-D

Engine Components International (ECI) Cylinder Malfunction

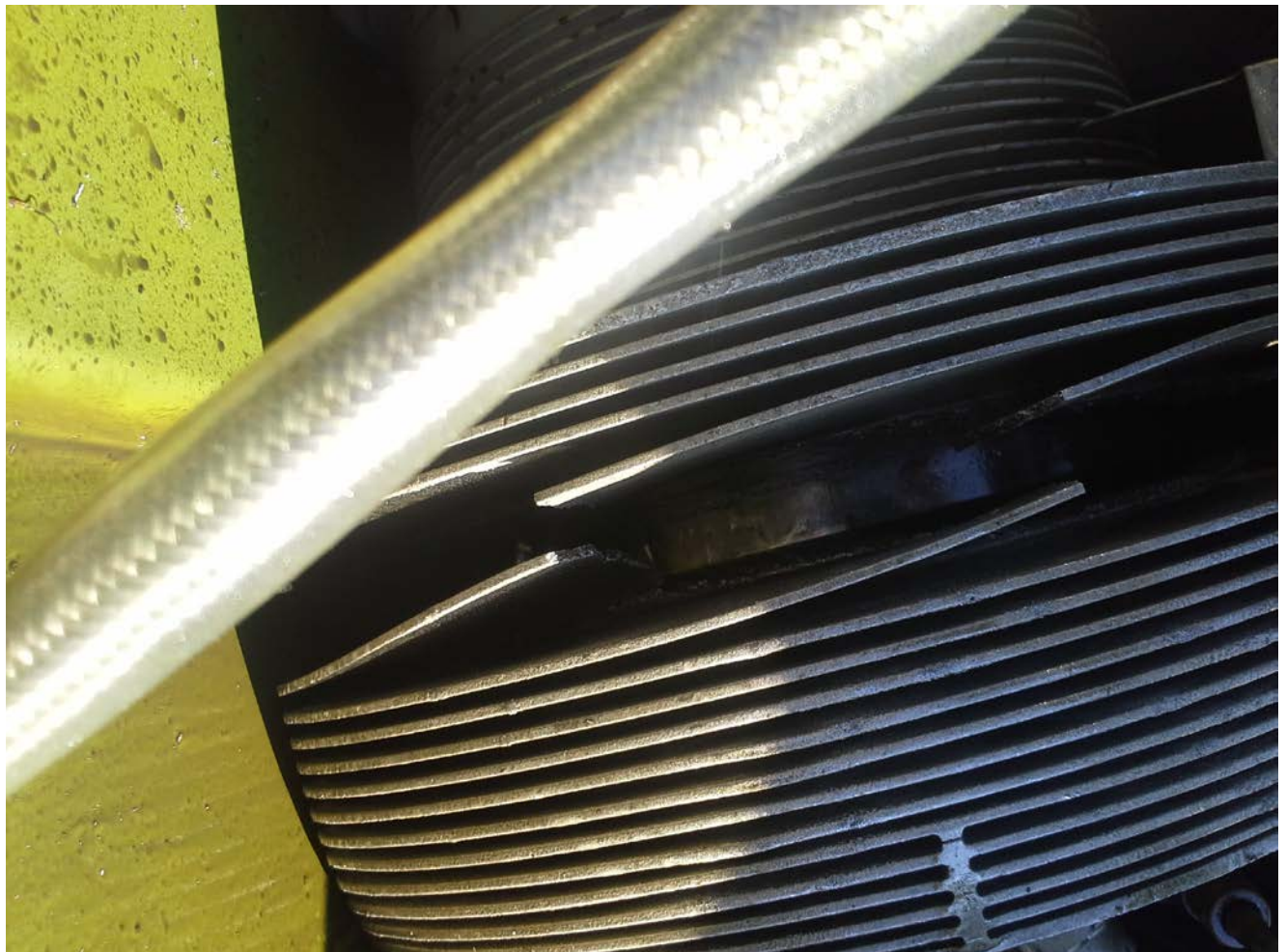
SDR #:

Subject:

The pilot noticed a vibration from the engine while in flight and then ceased operations to return to base. Maintenance personnel removed the engine cowlings and discovered the number one cylinder head had separated from the cylinder body with minimal oil found in the engine cowlings. The pilot reported no loss of engine oil pressure and all the engine gauges were operating within green operating ranges.

Transport Canada Comments:

Transport Canada was informed that this cylinder is affected by FAA Airworthiness Directive (AD) 2016-16-12 and was scheduled to be complied with within the prescribed time frame. Operators are reminded that it is important to inform their local airworthiness authorities of such events so that the effective dates of ADs can be evaluated and if necessary be amended.



Rotorcraft

Helicopter Technology Company, Equipment Delamination of Main Rotor Blade Abrasion Strip

SDR #: 20160613017

Subject:

During the 100 hour inspection of the main rotor blades, as required by the Helicopter Technology Company Service Notice 2100-8 revision 2, all five blades were found to have delamination of leading edge abrasion strip. All of the blades have a total time since new of 97.2 hours and 2074 torque events. The Main Rotor Blades are being sent back to manufacturer.

Transport Canada Comments:

In the elapsed calendar time since the release of Service Notice 2100-8 revision 2, operators have continued to report delamination or disbonding of the abrasion strip on Helicopter Technology Company Main Rotor Blades. The service difficulty reports have also indicated that failure to detect the delamination or disbonding when inspecting has resulted in departure of the Abrasion Strip in-flight. Due to these reports, Service Notice 2100-8R2 was superseded by Mandatory Service Bulletin (MSB) 2100-8R3 dated 29 April 2016. The MSB revises the frequency and requirements for accomplishing the inspection as well as introduces a modification that will be mandated by a future published Federal Aviation Administration (FAA) Airworthiness Directive.



Main Rotor Blade without leading edge abrasion strip following an in-flight departure.

Bell Textron - Canada, 429 Pitch Restraint Spring Debonding

SDR #: 20160128004

Subject:

The pilot reported an abnormal vibration and "shifting" that was felt while the aircraft was in a hover and during flight. A precautionary landing was carried out. The pilots observed that the transmission was resting on the "pin back-up mounts". An Aircraft Maintenance Engineer was dispatched to inspect the aircraft and a subsequent flight test was carried out to confirm the main rotor transmission restraint condition. The aircraft was allowed to return to base with a speed restriction.

Debonding between inner and outer member of the Pitch Restraint Spring assembly was found. The Pitch Restraint Spring assembly did have an Alert Service Bulletin (ASB) 429-13-10 issued in April 2013, limited to a certain quantity of units, however this unit was not included.

Transport Canada Comments:

Following the initial issue of ASB 429-13-10, Bell Helicopter and Transport Canada continued to receive service difficulty reports for debonding of the pitch restraint spring 429-310-201-105 from the pylon pitch restraint spring assembly 429-010-204-101. Following an investigation, it was found that as ambient temperatures decrease, the risk of debonding may increase. As a result, Bell Helicopter has revised ASB 429-13-10 now dated 7 November 2016 to introduce a recall of suspect pitch restraint spring assemblies and to upgrade the restraint spring configuration to prevent future occurrences of debonding.



Specific area on the Pylon Pitch Restraint Spring Assembly where the debonding between the inner and outer member can be found

Bell Textron - Canada, 206B Cracked Aft Fuselage Frame

SDR #: 20160715005

Subject:

During a scheduled 100 hour airframe inspection, while looking through the inspection panel of the most-aft section of the airframe, the aircraft maintenance engineer found a suspected crack approximately 6 mm long. The crack was discovered in the aft frame near the upper right-hand tail boom attachment fitting, specifically fuselage station 205.0, water line 75.0 at the 2:00 position, when viewed from the rear, looking forward. The crack was in a difficult position to inspect with a magnifying glass because it was nestled behind a reinforcement angle. A liquid penetrant inspection was performed to confirm the suspected crack. The tail boom was removed and the crack was again confirmed. The liquid penetrant had seeped through from the front side and was visible from the aft side. The frame was paint stripped and the crack was measured to be approximately 33 mm long. The origin of the crack is unknown, there has been no recent operational incident and it was found on the compression side of the tail boom.

Debonding between inner and outer member of the Pitch Restraint Spring assembly was found. The Pitch Restraint Spring assembly did have an Alert Service Bulletin (ASB) 429-13-10 issued in April 2013, limited to a certain quantity of units, however this unit was not included.

Transport Canada Comments:

As described in this service difficulty report, there was likely no operational incident that can be considered root cause for the frame cracking. Age and fatigue may have contributed however the original design and/or the outdated "pressed" aft fuselage bulkhead, were the probable cause of why it cracked. Bell Helicopter has released Technical Bulletin TB 206-12-199 Revision A to address this area of concern. Specifically, part two of the technical bulletin introduces and provides instructions for installation of a new machined aft fuselage bulkhead that is made of thicker material. The new bulkhead is a direct replacement on the 206A/B.



Crack in the aft fuselage bulkhead located near the upper right hand tail boom attach fitting.

Robinson, R66 Tail Rotor Driveshaft Bearing Overheating

SDR #: 20160913004

Subject:

A Robinson R66 helicopter was cooling down after landing when the pilot reported a growling noise followed by a grinding sound. Further investigation revealed that the forward tail rotor drive shaft bearing housing had failed and caused the fan wheel to also fail. The operator was in correspondence with the Robinson Helicopter Company and determined the bearing was found to have broken loose from the bearing housing. The outer race of the bearing was spinning inside the housing causing heat and failure of the housing. The bearing was released from the housing and the drive shaft was released from its support which caused the fan to contact its housing which in turn sheared the fan from the drive shaft.

Transport Canada Comments:

The Robinson Helicopter Company has received additional reports of overheating F172-1 hanger bearing assemblies and has subsequently issued R66 Service Bulletin SB-20 dated 7 November 2016 as a corrective action. It is important to note that SB-20 supersedes R66 Service Bulletin SB-14 and requires upgrading the bearing assembly in addition to revising the requirements for an improved sealant application.

Equipment Airworthiness Directives (ADs)

Transport Canada (TC) endeavours to send copies of new Airworthiness Directives (ADs), which are applicable in Canada to the registered owners of the affected products. Equipment/appliance ADs are often only distributed to our regional offices because the owners of aircraft affected by this type of AD are not generally known.

Aircraft Maintenance Engineers (AMEs) and operators of the affected products are encouraged to obtain further information or a copy of the ADs from their regional TC office, their local Transport Canada Centre (TCC), their Principal Maintenance Inspector (PMI), or from the Civil Aviation AD website at: www.tc.gc.ca/cawis-swimn

Manufacturer	AD Number	Origin	Description
ZODIAC	2017-0001	EU	ATA 25 – Equipment / Furnishings – Cabin Attendant Seat – Inspection
UNITED INSTRUMENTS	2017-04-06	US	ATA 44 - Certain altimeters displaying higher than actual altitude due to a slow diaphragm leak.
MEGGITT	2017-06-03	US	ATA 21 - Perform initial and repeat inspections or disable or remove cabin combustion heater

Suspected Unapproved Parts (SUPs)

In Canada, SUPs are reported in accordance with section 571.13 of the standard of the Canadian Aviation Regulation (CAR).

When you suspect an unapproved part, the SUP report can be submitted on the [SDR form](https://www.tc.gc.ca/wsdrs) or through this Internet link at www.tc.gc.ca/wsdrs.

Make/Model	Part Name	Part Number	Part Condition	SDR No.
Boeing				
737-400	Gauge	1044	Suspected Unapproved	20170210014
Bombardier				
22858426107	Throttle Gearbox Bracket	22858426107	As Removed	20170324012
Equipment	Proximity Sensor	864202	Defective	20170307020
General Electric				
CF343B	Air Balance Piston Stationary	5042T25P01	As Removed	20170328018
Goodrich				
238020033	Forward Engine Mount	238020033	Overhauled	20170227010
Hartzell				
100641	Preload Plate Assembly	100641	Incorrect Part	20170307029
100641	Thrust Plate Assembly	100641	Incorrect Part	20170307028
Norman Lamp				
4596	Lamp 28v 250 Watt	4596	New	20170127004

FAA Special Airworthiness Information Bulletins (SAIB)

A Federal Aviation Administration (FAA) SAIB is an information tool that alerts, educates, and makes recommendations to the general aviation community. It is non-regulatory information and guidance that does not meet the criteria for an Airworthiness Directive (AD). www.faa.gov/aircraft/safety/alerts/SAIB/

SAIB Number	Make/Company	Subject	Issue Date
NM-17-15	Boeing Company, The	Equipment/Furnishings – Inflatable Airbag Assembly	2017-06-06
CE-17-14	JGS Properties, LLC	Main Landing Gear: Lower Leg Internal Corrosion	2017-06-05
	Luscombe Aircraft Corporation		
CE-17-13	Pilatus Aircraft Limited	Engine Oil Pressure; Torque Transducer Oil Pressure Pipe P-Clamp Installation	2017-05-19
CE-17-12	Cessna Aircraft Company	Horizontal Stabilizer – Elevator Attach Points	2017-05-11
	Textron Aviation Inc.		
NE-17-11	Continental Motors Inc.	POWERPLANT – Engine damage as a result of kickback	2017-05-10
NM-17-10	Boeing Company, The	Maintenance Practices	2017-04-13
NM-17-09	Boeing Company, The	Flight Control System	2017-03-09

EASA Safety Information Bulletin (SIB)

A European Aviation Safety Agency (EASA) SIB is an information tool that alerts, educates, and makes recommendations to the general aviation community. It is non-regulatory information and guidance that does not meet the criteria for an Airworthiness Directive (AD). <http://ad.easa.europa.eu/sib-docs/page-1>

SIB Number	Subject	Issue Date
2014-33R1	Airborne Collision Avoidance System II – Spurious Resolution Advisories	2017-06-06
2017-08	Access for Rescue and Fire Fighting Services at Aerodromes	2017-06-02
2016-16R1	AMSAFE Restraint Systems – Jammed Cockpit Seat Belt Buckles	2017-05-24
2017-07	Hoist – Inspection of the Cable Retention Setscrews	2017-05-23
2017-06	Pilatus PC-12 Aeroplanes - Torque Transducer Oil Pressure Pipe P-Clamp Installation	2017-05-15
2017-05	Airbus A330 and A340 Aeroplanes - Main Wheel Hub – Improved Maintenance Instructions	2017-05-02
2017-04	Safety Precautions Regarding the Transport by air by passengers of Portable Electronic Devices containing Lithium Batteries	2017-04-05

Service Difficulty Reports (SDR)

Service Difficulty Reports are submitted by Aircraft Maintenance Engineers (AMEs), owners, operators and other sources to report problems, defects or occurrences that affect aircraft airworthiness in Canada.

Make/Model	Part Name	Part Number	Part Condition	SDR No.
Aircraft				
Aero Commander				
690	Empanage		Cracked	20170123010
690	Main Landing Gear Torque Link	ED1240601	Cracked	20170317015
Aerospatiale				
ATR 42 300	Connector	E0052R22B55PNE	Shorting	20170302013
ATR 42 300	Wire Harness		Chafed	20170224013
ATR 42 300	Muffler	AT42RFMUFSTM1	Deteriorated	20170225001
ATR 42 300	Automatic Flight Control System Control Panel	7003975602	Unserviceable	20170215018
ATR 42 300	Differential Control Valve	C245680005	Stiff	20170330013
ATR 42 300	Flight Management System	3192001111106	Faulty	20170220005
ATR 42 300	Floor Beam	S536724062246	Corroded	20170324014
ATR 42 300	Floor Beam	S53672407202	Corroded	20170324015
ATR 42 300	Floor Beam	S53672408202	Corroded	20170324013
ATR 42 300	Frame	S53871404200	Cracked	20170321012
ATR 42 300	Engine Subframe	S54110010XXXXD	Serviceable	20170228020
ATR 42 300	Engine Subframe	S54110010XXXXG	Serviceable	20170228018
ATR 42 300	Wing Skin (Plank)	S5711094700000	Corrosion	20170323015
ATR 42 300	Propeller Brake	FE1595007	Internal Failure	20170119001
ATR 42 320	Angle Of Attack Sensor	0861GP	Serviceable	20170313014
ATR 42 320	Uplock Box	C245890002	Defective	20170313012
ATR 42 320	Handle Assembly	S7618010220000	Broken	20170306006
ATR 42 320	Main Wheel Tie-Bolt	MS2125006038	Broken	20170125017
ATR 42 320	Outer Latch Fitting	S5237652820601	Cracked	20170201022
ATR 42 320	Propeller Brake	FE1595007	Burnt	20170306014
ATR 42 500	Dc Power Connector	MS35061	Melted	20170207006
ATR 42 500	Fused Link	03013B	Burnt	20170306008

Make/Model	Part Name	Part Number	Part Condition	SDR No.
ATR 42 500	Starter Generator	8260123	Failed	20170123006
ATR 42 500	Uplock Box	C245890002	Not Locking	20170313011
ATR 42 500	Bolt	MS2125006038	Unserviceable	20170314025
ATR 42 500	Skin	S52871304292	Corroded	20170201020
ATR 42 500	Skin	S52871304292	Corroded	20170201021
ATR 42 500	Beam	S53672406208	Corroded	20170201017
ATR 42 500	Beam	S53672406208	Corroded	20170201018
ATR 42 500	Beam	S53672407202	Corroded	20170201016
ATR 42 500	Beam	S53672408202	Corroded	20170201015
ATR 42 500	Frame 27		Corroded	20170301006
ATR 42 500	Strut	S53672410278	Corroded	20170201014
ATR 42 500	Seat Track	S53678001210	Corroded	20170201011
ATR 42 500	Seat Track	S53678001210	Corroded	20170201013
ATR 42 500	Leading Edge	S55172100211	Corroded	20170201009
ATR 42 500	Skin	S57214356200	Corroded	20170131021
ATR 42 500	Access Panel	S5711442000100	Corroded	20170131020
ATR 42 500	Hinge	S57415030000000	Corroded	20170131022
ATR 42 500	Hinge	S5751052602701	Corroded	20170131023
ATR 42 500	Seal Retainer	571108852202	Serviceable	20170224012
ATR 42 500	Skin	S5711437502	Corroded	20170208005
		S57710002207S57		
ATR 42 500	Spoiler	7	Corroded	20170201019
ATR 72 202	Starter Generator	8260123	Faulty	20170131019
ATR 72 202	Pump Hydraulic	4019501	Failed	20170208007
ATR 72 202	Oil Cooler Door Flap	S5411271600200	Broken Hinge	20170210011
Aerospatiale Hc				
AS 350B2	Tail Rotor Blade	704A33633261	New	20170223020
AS 350B2	Under Seal Bushing	350A33215520	New	20170209017
AS 350B3	Droop Stop Retaining Yoke	350A37116200	Cracked	20170131017
AS 350BA	Main Rotor Blade	355A11002011	Cracked	20170308020
Agusta				
AW139	Starter Generator	11525462	Arching	20170106007

Make/Model	Part Name	Part Number	Part Condition	SDR No.
AW139	Landing Gear Control Panel	3G3230V00633 4G5610V001314G5	Faulty	20170307025
AW139	Left-Hand Heated Windshield (Right-Hand)	6	Cracked	20170314017
AW139	Elastomeric Bearing	3G6220C00154	Unserviceable	20170330011
AW139	Main Rotor Damper	3G6220V01352	Unserviceable	20170315007
AW139	Scissor Lever Upper	3G6230A00833	Cracked	20170126015
Airbus				
A310 304	Telescopic Strut Assembly	C231098104	Faulty	20170209003
A310 308	Captain Seat	25101125511	Faulty	20170223018
A319 114	Pack Ac Reheater	755C000001	Contaminated	20170126005
A319 114	Left-Hand Flap		Out Of Adjustment	20170301004
A319 114	Low Level Switch	C60AA0062	Failed	20170112001
A319 114	Flight Director		Reset	20170130010
A319 114	Proximity Switch		Adjusted	20170302008
A319 114	Pressure Regulator Valve	6774E010000	Failed	20170106004
A320 211	Clamp		Missing	20170227003
A320 211	Smoke-Lavatory Detector	GPA120300	Failed	20170327004
A320 211	Slat Rotary Actuator	830A000002	Failed	20170315006
A320 211	Hydraulic Pipe	D2901055800100	Failed	20170308006
A320 211	Hydraulic Pump	3031863001	Failed	20170213009
A320 211	Low Level Switch	C60AA0062	Failed	20170328012
A320 211	Inboard Half	C202051501	Cracked	20170217007
A320 211	Hydraulic Unit	TY209201	Failed	20170223016
A321 211	Pack Condenser	756A000006	Failed	20170320002
A321 211	Brake Servo Valve	C203740002	Failed	20170303002
A330 243	Outflow Valve	2079202AC	Frozen	20170213010
A330 343	O-Ring	NAS161212A	Leaking	20170320003
A330 343	Bogie & Dressing	201486003	Failed	20170206013
A330 343	Temperature Control Thermostat	398E020000	Failed	20170124011
Bae - Uk				
3212	Mounting Shaft Radius Rod	1373025B403	Wrong Part	20170210007

Make/Model	Part Name	Part Number	Part Condition Number	SDR No.
Beech				
100	Edgelight Panel Assembly	97524049	Burned	20170208014
100	Reset Solenoid	1310105	Intermittent	20170223025
1900C	Rudder Pedal Arm	5052432634	Corroded	20170209012
1900D	Actuator Main Landing Gear	11438004115	Overhaul	20170213008
1900D	Altimeter	66030620008	Failed	20170303001
1900D	Angle	1144300027180	Cracked	20170130012
1900D	Angle	1294200343	Cracked	20170130013
1900D	Fuel Control Unit	8063080	Overhaul	20170213007
1900D	Master Cylinder	9038000133	Overhaul	20170216006
1900D	Main Landing Gear Harness	1143610441	Unserviceable	20170221014
1900D	Motor Power Pack	571302	Overhaul	20170202003
1900D	Relay	MS24166D1	Unserviceable	20170223023
1900D	Spar Cap Left-Hand & Right-Hand	10164001134	Cracked	20170207001
1900D	Starter Generator	23078019	Unserviceable	20170105005
1900D	Support Assembly/Handle Lower	1295140801	Cracked	20170111012
1900D	Switch	V3101D8	Corroded	20170103002
1900D	Switch-Downlock	1CH25	Unserviceable	20170109001
200	Flap Motor	100384040	Burnt Out	20170123007
200	Right-Hand Idle Control Cable	9938000127	Separated	20170321021
76	Combustion Tube	AHE87D13C3	New	20170125016
A100	Flap Track	501600183	Cracked	20170131025
A100	Fuel Bypass Line	3011849	Cracked	20170307023
A100	Torque Tube	115610010383	Cracked	20170201025
A24R	Reinforcement	169110001132	Cracked	20170223014
A24R	Support Assembly Left-Hand Aft Gear Pic	1691100219	Cracked	20170210017
A36	Main Battery	RG35AXC	Unserviceable	20170221004
B100	Fuel Control Unit	8977709	Defect	20170313002
B200	Coil Cord	1013841605	Broken Wires	20170228021
B200	Controller	13034612	Unserviceable	20170113012

Make/Model	Part Name	Part Number	Part Condition	SDR No.
B200	Deice Hot-Lip	10190631S	Cracked	20170126020
B200	Deice Timer	C45114	Failed	20170109010
B200	Engine Mount	101910012161	Cracked Insulation	20170216005
B200	Fuel Probe Inboard Auxiliary	100380006167	Failed	20170109011
B200	High Pressure Bleed Valve	310092205	Faulty	20170222007
B200	Ignition Exciter	CH920151	Failed	20170109016
B200	Indicator- Gear Down	35133790007	Stuck Bare Wire	20170116009
B200	Left-Hand Gear Down Switch	1013646281	Casing	20170306007
B300	Bleed Air Warning Tube	131823E4M0750	Unserviceable	20170209008
B300	Cable Power Lever	10138903511	Seized	20170327002
B300	Cross Tie	97430000149	Cracked	20170309007
B300	Duct Assembly Heater	30006921	Unserviceable	20170126006
B300C	Box Controller	13034612	Serviceable	20170125008
Bell Textron - Can				
206B	Aft Bulkhead	206030446001F	Cracked	20170217009
206B	Hangar Bracket	206030407007009	In Service	20170309014
206B	Main Rotor Blade	206010200133	Cracked	20170213004
206B	Throttle	2307606	Abrasion	20170327007
206L 1	Switch-Fuel Low Light	206063613003	Unserviceable Manufacturing	20170104024
407	Main Rotor Expandable Bolt	406310103101103	Defect	20170209010
407	Hangar Bearing	407340339107	Loose	20170214021
429	Fan Motor	S6063EC1	Detached	20170214020
429	Fan Motor Cover	S6063EC1	Detached	20170313018
429	Connector	429J9	Short Circuit	20170322014
429	Bracket Elt	429075601101	Cracked	20170208010
429	Antenna Connector		Worn Threads	20170124012
429	Cap	AAL490011002	Damaged	20170227011
429	Spool Striker	429030215101	Worn	20170208009

Make/Model	Part Name	Part Number	Part Condition	SDR No.
429	Aft Centre Firewall	429069504105	Cracked	20170103004
429	Firewall Panel Assembly	429069501111	Wear Holes	20170308017
429	Spring Assembly Pitch Restraint	429010204101	Defective	20170313008
429	Bearing	MS276434	Corroded	20170203011
429	Bearing	MS2764641	Corroded	20170203009
429	Bellcrank	429001523101	Corroded	20170213003
429	Tail Rotor Pitch Link	429012112111	Worn	20170206023
Bell Textron - Usa				
212	Starter/Generator	23046020	Cracked	20170124016
212	Main Rotor Blade	212015501121	Cracked	20170124015
212	Clamp Assembly Curvic Coupling	204040811001	Cracked	20170126018
212	Drive Shaft	2660163502	Faulty	20170321022
Boeing				
737 275C	Upper Aft Crank Roller	6937418	Fractured	20170223026
737 406	Coffee Maker	4211001B	Burning Smell	20170203010
737 406	Electric Actuator Assembly	AR7077M3	Unserviceable	20170117010
737 406	Stabilizer Trim Motor	AR7077M3	Defective	20170206011
			Incorrect	
737 406	Fuel Quantity Indicator	2600011	Reading	20170329015
737 406	Harness	65C370642	Chafed Wire	20170303011
737 406	Air Data Computer	HG480B43	Unserviceable	20170327015
737 406	Air Data Computer	HG480B43	Unserviceable	20170327016
737 406	Air Data Computer	HG480B43	Unserviceable	20170327017
737 406	Generator Electronic Flight Instrument System	6229436101	Failed	20170221015
737 406	Precooler	1947924	Cracked	20170124013
737 406	Precooler	1947924	Cracked	20170321016
737 406	Auxiliary Power Unit Duct	38846393	Leaking	20170111005
737 46B	Hydraulic Fuse	62721	Broken Spring	20170208006
737 4B3	Auxiliary Power Unit	380428101	Failed	20170327013
		65C346701AND65		
737 4Q8	Hinge Fittings	C3	Cracked	20170217013
737 73V	Coupler	14C3308	Leaking	20170303003

Make/Model	Part Name	Part Number	Part Condition	SDR No.
737 76N	#2 Window-Sliding	58935587	Cracked	20170206018
737 7CT	Recirculation Fan	6454052	Unserviceable	20170109013
737 7CT	Panel	5145177	Smoking	20170313016
737 7CT	Aft Flap Drive Pushrod	113A39208	Bent	20170113009
737 7CT	L1 Window	5893543149	Shattered	20170109015
737 8CT	Auxiliary Power Unit	38007021	Unserviceable	20170206022
737 8CT	#2 Window Pane	58935587	Shattered	20170118004
737 8HX	Outflow Valve	40631977201AA BACC63BP22A19S	Faulty	20170327009
757 2B7	Connector	6	Contaminated	20170313020
757 2B7	Slat Loss Sensing Switch	21EN2626	Failed	20170316009
757 2B7	Screw	BACS12ER04K5	Over Torqued	20170201027
757 2B7	Oxygen Regulator Assembly	80316315	Unserviceable	20170123014
767 306	Filter Bowl O-Ring	NAS1611029	Broken	20170315016
767 328	Hose	AS1150840115	Leaking	20170109017
767 328	Hydraulic Pump	3508806	Leaking	20170321019
767 333	Assembly Outboard Spoiler	252T14002	Faulty	20170111008
767 333	Main Tank Boost Pump	5006003D	Failed	20170313007
767 33A	Wheel	26088115	Broken Tie Bolt	20170117012
767 33A	Unit Weather Radar Drive	20414440402	Failed	20170329018
767 33A	Multifunction Control Display Unit	4058650950	Failed	20170220009
767 35E	Brake	26124121A	Brake Retainers	20170221011
767 375	Yaw Damper Module	285T0013126	Failed	20170303004
767 375	Hydraulic Pump	3031863001	Leaking	20170220004
767 375	Digital Air Data Computer	4040800906	Failed	20170111009
777 233LR	Engine Driven Pump	972952	Cracked Case	20170307021
777 333ER	Assembly Inboard Link	161W32071	Broken	20170130009
787 8	Electro-Mechanical Contrl Unit	CA72711004	Failed	20170105002
787 9	Variable Frequency Starter Generator	7001330H03	Failed	20170302007
Bombardier BD 100 1A10	Air Cycle Machine	3471A020000	Hi Temp	20170109014

Make/Model	Part Name	Part Number	Part Condition	SDR No.
BD 100 1A10	Power Control Unit	C61701003	Leaking	20170118007
BD 100 1A10	Actuator	C47030003	Failed	20170118006
BD 100 1A10	Landing Gear Selector	UZ006500Y00	Bad Contacts Defective	20170130005
BD 100 1A10	Firewall Frame	1005451593	Repair	20170309004
BD 100 1A10	Horizontal Pivot Fitting	1005511562001	Wear	20170315012
BD 100 1A10	Bolt	NAS62039H	Broken	20170317008
BD 500 1A10	Autoflight System Software	81003112B000200	Uncommanded	20170102001
BD 500 1A10	Ac Power Feeder Wiring	CPCCJ2061013	Chafed	20170120012
BD 500 1A10	Side Stick Controller	4901001009	Defective	20170130004
BD 500 1A10	Side Stick Controller	4901001009	Quality Escape	20170203012
BD 500 1A10	Hydraulic Pump Electric	62800001003	Leaking Caution Light	20170322010
BD 500 1A10	Brake Data Concentrator Unit	900071901	On Caution Light	20170210005
BD 500 1A10	Brake Data Concentrator Unit	900071901	On Caution Light	20170215011
BD 500 1A10	Brake Data Concentrator Unit	900071901	On Failed	20170307019
BD 500 1A10	Brake Data Concentrator Unit	900071901	Message Incorrect	20170130008
BD 500 1A10	Installation Screw	NAS8703A6	Length	20170208012
BD 500 1A10	Terrain Awareness Warning System	8222586001	No Defect Low Pressure	20170206015
BD 500 1A10	Crew Oxygen	80736801	Warning	20170210004
BD 500 1A10	Hinge Pin	B14915411	Fell Off	20170217004
BD 500 1A10	Target Door Closed Sensor	C01551150001	Water Open Door	20170220001
BD 500 1A10	Target Door Closed Sensor	C01551150001	Warning	20170220002
BD 500 1A10	Target Door Closed Sensor	C01551150001	Water	20170306001
BD 500 1A10	Windows	NP19610212	Fluid Trapped	20170210002
BD 500 1A11	Flight System	81003112B000200	Uncommanded	20170123002
BD 500 1A11	Restraint System Assembly	480000935012396	Latching Issue	20170301005

Make/Model	Part Name	Part Number	Part Condition	SDR No.
BD 500 1A11	Cargo Engines Auxiliary Power Unit		Debris Nuisance	20170208013
BD 500 1A11	Windshear Computer	8222259001	Warning	20170328019
BD 500 1A11	Flight Management System	81003112B0302	Failed Will Not Stay	20170120009
BD 500 1A11	Door	C04400001S0011	Latched	20170210006
BD 500 1A11	Cargo Door	C01550000001	Warning Light Warning On	20170224006
BD 500 1A11	Passenger Door	C01538340001	Taxi	20170224005
BD 700 1A10	Seal Connector Assembly	GG468405419	Dented	20170206024
BD 700 1A10	Door Handle Assembly	70025244829	New	20170117015
BD 700 1A10	Ribbon Heater	304313T	Burnt	20170207002
BD 700 1A10	Hydraulic Line	GD4781133	Fouling	20170223024
BD 700 1A10	Flight Management System		Software	20170224004
		CREWMEMBERPB		
BD 700 1A10	Protective Breathing Equipment	E	Faulty	20170308005
BD 700 1A10	Half Rib	GD41715391	Cracked	20170120006
BD 700 1A10	Windshield	GC331000113	Shattered Bushing	20170110022
BD 700 1A10	Rear Mount Link	BRR15833	Migrated	20170323005
BD 700 1A11	Nose Wheel Steering Actuator	1287A000002	Failure	20170105004
CL600 2B19 (RJ100)	Tube Assembly Hydraulic Wing	601R75276457	Chafed	20170217003
CL600 2B19 (RJ100)	Control Column Bracket	A14240011	Improper Install	20170210010
CL600 2B19 (RJ100)	Rudder Feel Unit Shaft	600902511	Damaged	20170228017
CL600 2B19 (RJ100)	Flap Electronic Control Unit	601R930507	Defective	20170215012
CL600 2B19 (RJ100)	Flap Electronic Control Unit	860D10018	Repaired	20170309012
CL600 2B19 (RJ100)	Tube Assembly	601R7528623	Broken	20170306009
CL600 2B19 (RJ100)	Nose Landing Gear Selector Valve	750006000	Faulty	20170203006
CL600 2B19 (RJ100)	Side Window	NP13932212	Shattered	20170203008
CL600 2B19 (RJ100)	Leading Edge Skin -Right-Hand	601R120624	Cracked	20170303010
CL600 2B19 (RJ440)	Air Cycle Machine	78279015	Failed	20170127001
CL600 2B19 (RJ440)	Shutoff Valve	979998	Failed	20170301008

Make/Model	Part Name	Part Number	Part Condition	SDR No.
CL600 2B19 (RJ440)	Switch-Low Flow Detector	951905	Faulty	20170126008
CL600 2B19 (RJ440)	Yaw Damper Actuator	6229968100	Faulty	20170201012
CL600 2B19 (RJ440)	Firex Bottle	346000371	Low Pressure	20170313013
CL600 2B19 (RJ440)	Horizontal Stabilizer Control Unit	7060	Defective	20170110016
CL600 2B19 (RJ440)	Pitch Trim Disconnect Switch	9960013	Failed	20170110025
CL600 2B19 (RJ440)	Pitch Trim Switch	3094334	Failed	20170321005
CL600 2B19 (RJ440)	Spoiler Electronic Control Unit System	4916405	Defective	20170217008
CL600 2B19 (RJ440)	Spoiler Electronic Control Unit System	4916407	Failed	20170308002
CL600 2B19 (RJ440)	Pressure Switch	9670081	Faulty	20170315005
CL600 2B19 (RJ440)	Temperature Wing Sensor	6243843	Failed	20170105006
CL600 2B19 (RJ440)	Cowl Anti-Ice Valve	300013000003	Defective	20170123008
CL600 2B19 (RJ440)	Cowl Anti-Ice Valve	300013000003	Failed	20170113007
CL600 2B19 (RJ440)	Cowl Anti-Ice Valve	300013000003	Failed	20170124010
CL600 2B19 (RJ440)	Cowl Anti-Ice Valve	300013000003	Failed	20170209001
CL600 2B19 (RJ440)	Pressure Cowl Anti-Ice Switch	12681	Failed	20170104027
CL600 2B19 (RJ440)	Pressure Regulator And Shut-Off Valve	5399003	Failed	20170106010
CL600 2B19 (RJ440)	Valve	300013000003	Failed	20170113002
CL600 2B19 (RJ440)	Air Data Heater Controller	785806	Failed	20170201024
CL600 2B19 (RJ440)	Electronic Flight Display	6229810016	Faulty	20170210001
CL600 2B19 (RJ440)	Nose Landing Gear Priority Valve	4622	Defective	20170111006
CL600 2B19 (RJ440)	Nose Landing Gear Priority Valve	4622	Failed	20170301002
CL600 2B19 (RJ440)	Nose Landing Gear Selector Valve	601R752067	Failed	20170224010
CL600 2B19 (RJ440)	Main Landing Gear Sidestay Actuator	17008113	Faulty	20170330010
CL600 2B19 (RJ440)	Wheel Speed Transducer	140153	Broken Wire	20170206020
CL600 2B19 (RJ440)	Proximity Sensor	864202	Defective	20170307020
CL600 2B19 (RJ440)	Harness	17300221	Crushed	20170216003
CL600 2B19 (RJ440)	Nose Landing Gear Harness	17300	Damaged	20170214019
CL600 2B19 (RJ440)	Sidewall Light	BC10065003	Wire Melting	20170216004
CL600 2B19 (RJ440)	Air Data Computer	8220372	Faulty	20170206010
CL600 2B19 (RJ440)	Passenger Door Aft Side Panel	601R3190169	Cracked	20170216007
CL600 2B19 (RJ440)	Frame	601R36026	Corroded	20170306005

Make/Model	Part Name	Part Number	Part Condition	SDR No.
CL600 2B19 (RJ440)	Frame	601R32028	Corrosion	20170216009
CL600 2B19 (RJ440)	Lower Doubler	601R38303145	Corroded	20170320010
CL600 2B19 (RJ440)	Rear Pressure Bulkhead Web	601R360082	Chafe Damage	20170131014
CL600 2B19 (RJ440)	Inner Doubler	601R35005	Corroded	20170303007
CL600 2B19 (RJ440)	Floor Sill Plate	601R3501269	Cracked	20170110017
CL600 2B19 (RJ440)	Fuselage Skin	601R35005	Corroded	20170306004
CL600 2B19 (RJ440)	Lower Web	601R210221	Corroded	20170302012
CL600 2B19 (RJ440)	Front Windshield	NP139321	Cracked	20170110021
CL600 2B19 (RJ440)	Windshield	NP139321	Cracked	20170228024
CL600 2B19 (RJ440)	Inlet Cowl	22850056105	Damaged	20170315004
CL600 2B19 (RJ440)	Fuel Control Unit	3882730	Defective	20170106012
CL600 2B19 (RJ440)	Engine Throttle Quadrant	FE21000X	Defective	20170217005
CL600 2B19 (RJ440)	Stow Switch	AEN886	Failed	20170106001
		APTE142F1000130		
CL600 2B19 (RJ440)	Engine Oil Pressure Transducer	D	Faulty	20170123011
CL600 2C10 (RJ700)	Hose	AE7135782	Frayed/Leaking	20170117011
CL600 2C10 (RJ700)	Safety Valve	GG670980051	Failed	20170329012
CL600 2C10 (RJ700)	Elevator Servo Actuator	6225027101	Failed	20170125001
CL600 2C10 (RJ700)	Generator	766277A	Failed	20170106002
CL600 2C10 (RJ700)	Actuator	AL00102	Failed	20170106013
CL600 2C10 (RJ700)	Actuator	AL00102	Faulty	20170113001
CL600 2C10 (RJ700)	Slat Actuator No 3	766385C	Failed	20170322009
CL600 2C10 (RJ700)	Slat Actuator No 1	766383	Failed	20170306010
CL600 2C10 (RJ700)	Pressure Pipe Assembly	CN6272009003	Leaking	20170316007
CL600 2C10 (RJ700)	Electronic Flight Display	6229810204	Burnt Smell	20170328010
CL600 2C10 (RJ700)	Proximity Sensor	895001	Checked	20170125009
CL600 2C10 (RJ700)	Selector Valve	533407	Faulty	20170220006
CL600 2C10 (RJ700)	Gear Selector Valve	2322H000	Failed	20170209006
CL600 2C10 (RJ700)	Landing Gear Sel Lever	533443	Failed	20170202002
CL600 2C10 (RJ700)	Main Landing Gear Selector Valve	2322H000003	Failed	20170106011
CL600 2C10 (RJ700)	Brake Temperature Sensor	6007300	Overheat	20170315001
CL600 2C10 (RJ700)	Target-Proximity Switch	521621	Misaligned	20170207005

Make/Model	Part Name	Part Number	Part Condition	SDR No.
CL600 2C10 (RJ700)	Air Data Computer	8220372436	Failed	20170328008
CL600 2C10 (RJ700)	Angle Of Attack Sensor	C16258AB	Failed	20170208002
CL600 2C10 (RJ700)	Door Access Panels	601R318024	Corrosion	20170303009
CL600 2C10 (RJ700)	Door Inner Skin	601R318024	Corroded	20170105003
CL600 2C10 (RJ700)	Door Post Left-Hand & Right-Hand	CC6703414212	Corroded	20170316006
CL600 2C10 (RJ700)	Passenger Door Inner Skin	CC670386011	Corroded	20170208011
CL600 2C10 (RJ700)	Stringer	SH6708722370793	Corroded	20170324009
CL600 2C10 (RJ700)	Floor Beam	CC67034175	Cracked	20170111015
CL600 2C10 (RJ700)	Side Window	NP139322	Shattered	20170105008
CL600 2C10 (RJ700)	Windshield	NP139321	Cracked	20170329013
CL600 2C10 (RJ700)	Windshield	NP139321	Cracked	20170329014
CL600 2D15 (705)	Cargo Fire Bottle	4739201	Depleted	20170302010
CL600 2D15 (705)	Emergency Exit Door	SH67036600	Cracked	20170209011
CL600 2D15 (705)	Lower Web	CC670341701	Cracked/Damaged	20170113003
CL600 2D24 (RJ900)	Hydraulic Engine Driven Pump	6619006	Failed	20170117013
CL600 2D24 (RJ900)	Leak Detector Controller	GG698800123	Failed	20170131018
CL600 2D24 (RJ900)	Cowl Anti-Ice Valve	54011485	Failed	20170116001
CL600 2D24 (RJ900)	Main Landing Gear Selector Valve	2322H000	Defective	20170313003
CL600 2D24 (RJ900)	Brake Temperature Sensor	6007300	Erratic Reading	20170214008
CL600 2D24 (RJ900)	Wheel Assembly	900012001	Cracked	20170113008
CL600 2D24 (RJ900)	Ballast	BR9500106	Defective	20170202004
CL600 2D24 (RJ900)	Enhanced Ground Proximity Warning System			
CL600 2D24 (RJ900)	Computer	9650976003216210	Failed	20170104014
CL600 2D24 (RJ900)	Pressure Regulator And Shut-Off Valve	GG67080002	Failed	20170120003
CL600 2D24 (RJ900)	Stairs Aft Side Panel	601R31702	Cracked	20170228019
CL600 2D24 (RJ900)	Upper Door Bracket		Installed	
CL600 2D24 (RJ900)	Aft Door Assembly		Upside	20170303008
CL600 2D24 (RJ900)	Cross Beam	CC67033098	Missing	20170308013
		MM67035313007	Corroded	20170316003
		MM67037150MM67		
CL600 2D24 (RJ900)	Web	03	Cracked	20170323003

Make/Model	Part Name	Part Number	Part Condition	SDR No.
			Burnt Heat	
CL600 2D24 (RJ900)	Side Window	NP13932211	Eleme	20170214005
CL600 2D24 (RJ900)	Side Window	NP139322	Heater Fail	20170315011
CL600 2D24 (RJ900)	Windsheild	NP139321	Cracked	20170126007
CL600 2D24 (RJ900)	Windshield	NP139321	Shattered	20170117014
CL600 2D24 (RJ900)	Oil Temperature Sensor	771672	Faulty	20170328021
CL600 2E25 (RJ1000)	Air Cycle Machine	3478A010001	Failed	20170106014
CL600 2E25 (RJ1000)	Actuator	1712025A	Broken	20170224003
		SH6703135331354		
CL600 2E25 (RJ1000)	Frame	3	Corroded	20170106016
CL600 2E25 (RJ1000)	Lower Skin	CC69015116	Corrosion	20170104028
Britten Norman				
BN2A 21	Elevator Tip		Cracked	20170108002
Canadair				
CL215 6B11(CL415)	Tube Assembly	3036234	Shafe	20170213002
CL600 2B16(601 3R)	Flutter Damper-Elevator	600751427	Slow Operation	20170206017
CL600 2B16(601 3R)	Lamp 28v 250 Watt	4596	New	20170127004
CL600 2B16(604)	Ipad Usb Charger		Faulty	20170316005
CL600 2B16(604)	Fuel Manifold Assembly	38301562	Chafed/Worn	20170210008
CL600 2B16(604)	Aircraft	CL6002B16604	Scrapped	20170110024
CL600 2B16(604)	Bearings-Forward Keel Beam	MS1410112	Axial Play	20170126016
Cessna				
152	Flap Cable	40010745	Frayed Cable	20170323002
152	Navigation	69102000	Failed	20170322011
172M	Axle Stub	5411991	Cracked	20170209013
172M	Muffler	175400125AWL	Cracked	20170106015
172M	Nose Fork	SK1759	Brise	20170324005
172P	Forward Bulkhead	5503214	Cracked	20170110027
172P	Starter Through Bolt		Serviceable	20170329017
172R	Oil Pressure Switch	83278	Leaking	20170328022
172S	Seat Lock Control	SPL19251	Broken	20170126019
182S	Oil Pressure Switch	83278	Failed	20170327008

Make/Model	Part Name	Part Number	Part Condition	SDR No.
208	Link Nose Gear Ram	8A07185002	Failing	20170322012
208B	Attach Bracket	26221298	Cracked	20170323007
208B	Attach Bracket	26221314	Cracked	20170323009
208B	Attach Bracket	26221434	Cracked	20170323008
208B	Attach Bracket	26222895	Cracked	20170323011
208B	Attach Bracket	26222896	Cracked	20170323006
208B	Attach Bracket	26120882	Damaged	20170323014
208B	Bracket Assembly	26510291	Cracked	20170323012
337G	Nose Wheel Fork	1542010201	Crack	20170303005
525	Fire Extinguisher Cartridge	130835	New	20170105011
525A	Pre Cooler	81612	Blown Open	20170207003
550	Air Data Display Unit	9D8103016	Tested	20170206016
560	Piston Assembly	66421003	New	20170324010
560(ENCORE)	Release Valve		Overhauled	20170316011
560XLS	Vertical Stabilizer Structure		Chaffing	20170103013
680	Control Unit	3500920	Intermittent	20170109009
A185E	Right-Hand Rudder Pedal	1460320495	Broken	20170316012
A185F	Propeller Hub	E715412R	Cracked	20170209016
R172K	Auxiliary Fuel Boost Pump	18000B	Operable	20170111014
U206F	Artificial Horizon	235010616	Faulty	20170112006
U206F	Starter	6462382R	Failed	20170112005
U206G	Starter	6462382	Failed	20170112009
Cirrus				
SR22	Exhaust Manifold	226850011	Factory New	20170123009
Dehavilland - Can				
DHC 2 MKI	Fork End	AN66580L	Cracked	20170307027
DHC 2 MKIII	Left-Hand Rudder Pedal Stop	C2FS3459	Cracked	20170330007
		LHC3FS249RHC3F		
DHC 3	Left-Hand Strut & Right-Hand Strut	S2	Corroded	20170309009
DHC 3	Rod End	MD4615	Broke	20170221006
		LHC3FS249RHC3F		
DHC 3	Strut Posts Left-Hand & Right-Hand	S2	Corroded	20170309008

Make/Model	Part Name	Part Number	Part Condition	SDR No.
DHC 6 200	Landing Gear Leg	C6UM111107	Broken	20170322013
DHC 6 300	Landing Gear Leg Left	C6UM111109SP	Used	20170308007
DHC 8 102	Pulley	MS202203	Failed	20170110026
DHC 8 102	Flap Power Unit	734177F	Failed	20170309010
DHC 8 102	Pulley Bracket	85410351101	Cracked	20170315015
DHC 8 102	Bolt	NAS4405D30	Sheared	20170118002
DHC 8 102	Window		Shattered	20170120001
DHC 8 201	Air Cycle Machine		Damaged	20170309003
DHC 8 202	Air Cycle Machine	78279018	Failed	20170123003
DHC 8 301	Housing		Cracked	20170116013
DHC 8 301	Electrical Plug	MS3476L188S	Burnt	20170308004
DHC 8 311	Ac Generator		Failed	20170317011
DHC 8 311	Arm Hinge Aft	854200168722101	Unserviceable	20170105001
DHC 8 311	Skin Panel		Corrosion	20170208008
DHC 8 311	Bolt	MS2125010070	Corrosion	20170120002
DHC 8 314	Distributor Valve	8301001087220XX	Faulty	20170321020
DHC 8 315	Battery	20412	Low Power	20170206019
DHC 8 315	Hydraulic Line	82940010113	Cracked	20170118008
DHC 8 315	O-Ring	NAS1612	Failed	20170123001
DHC 8 400	Air Cycle Machine	8209063	Worn Bearing	20170221001
DHC 8 400	Desiccant Filter		Contaminated	20170111007
DHC 8 400	K2 Relay		Faulty	20170301010
DHC 8 400	Trim Switch		Failed	20170116002
DHC 8 400	Circuit Breaker		Faulty	20170126011
DHC 8 400	Engine Driven Pump	6617304	Failed	20170217001
DHC 8 400	Engine Driven Pump	6617304	Leaking	20170103005
DHC 8 400	Engine Driven Pump	6617304	Leaking	20170103006
DHC 8 400	Engine Driven Pump	6617304	Leaking	20170131009
DHC 8 400	Left-Hand Landing Gear		Failed	20170227006
DHC 8 400	Actuator		Faulty	20170302001
DHC 8 400	Nose Landing Gear Door Sensor	82410888	Failed	20170321009

Make/Model	Part Name	Part Number	Part Condition	SDR No.
DHC 8 400	Nose Landing Gear Ground Lock		Stuck	20170215014
DHC 8 400	Nose Landing Gear Ground Lock		Stuck	20170215015
DHC 8 400	Selector Valve	483003	Failed	20170227007
DHC 8 400	Main Landing Gear Flex Hose	46455117	Leaking	20170126017
DHC 8 400	Actuator		Bled	20170120005
DHC 8 400	Nose Landing Gear Door Actuator	478301	Faulty	20170103003
DHC 8 400	Nose Landing Gear Door Actuator	478301	Internal Leak	20170104017
DHC 8 400	Speed Transducer		Damaged	20170302004
DHC 8 400	Wear Pin		Damaged	20170126012
DHC 8 400	Tire		Blow Outs	20170120004
DHC 8 400	Tire		Deflated	20170215013
	Nose Wheel Steering Rotary Variable			
DHC 8 400	Differential Transducer		Out Of Rig	20170126013
DHC 8 400	Rotary Variable Differential Transducer		Adjusted	20170307018
DHC 8 400	Rotary Variable Differential Transducer		Rigging	20170113005
DHC 8 400	Nose Landing Gear Door Harness	82410453	Damaged	20170103011
DHC 8 400	Flight Management System		Faulty	20170126014
DHC 8 400	Auxiliary Power Unit Exhaust Liner	400513021	Collapsed	20170108001
DHC 8 400	Door Handle		Open	20170214007
DHC 8 400	Proximity Sensor		Contaminated	20170216002
DHC 8 400	Sensor		Rigged	20170328013
DHC 8 400	Sensor		Faulty	20170131015
			Suspected	
DHC 8 400	Control Panel		Switch	20170308015
			Helicoil	
DHC 8 400	Oil Cooler		Damaged	20170126002
			Part Number	
DHC 8 402	Refuel/Defuel Panel		Missing	20170112008
DHC 8 402	Fastener Collar		Cracked	20170125019
DHC 8 402	Blow Out Panel		Resecured	20170203005
DHC 8 402	Nacelle Pressure Regulator And Shut-Off Valve	8209713	Internal Failure	20170327011
DHC 8 402	Aft Safety Valve	81155B010101	Seized	20170301011

Make/Model	Part Name	Part Number	Part Condition	SDR No.
DHC 8 402	Cabin Pressure Control	92146A010401	Faulty	20170320004
DHC 8 402	Aft Outflow Valve	88060B010103	Faulty	20170116008
DHC 8 402	Connector	MS3450L2411S	Burnt	20170320012
DHC 8 402	Harness	10340542	Over-Crimp	20170217011
DHC 8 402	Wires		Chafed	20170117017
DHC 8 402	Wiring		Burnt	20170206014
DHC 8 402	Ac Generator		Faulty	20170328017
DHC 8 402	Fan	400SG10078	Disconnected	20170222003
DHC 8 402	Receptacle		Burnt	20170203003
DHC 8 402	Coffee Brewer	400263601	Unserviceable	20170224011
DHC 8 402	Wiring		Burnt	20170308014
DHC 8 402	Flap Control Unit	C1599931001	Failed	20170110019
DHC 8 402	Flap Control Unit	C1599931001	Failed	20170223017
DHC 8 402	Flap Module Quadrant	FE282004	Failed	20170320013
DHC 8 402	Pressure Switch		Failed	20170317006
DHC 8 402	Ground Spoiler		Hardware	20170206009
DHC 8 402	Wire		Shorted	20170109008
DHC 8 402	Balance Relief Valve	9752565	Leaking	20170222002
DHC 8 402	Leading Edge Assembly`S	8551702200585510	Leakin	20170301007
DHC 8 402	Bypass Door Actuator	LA11A2104	Intermittnet	20170217002
DHC 8 402	Engine Intake Adaptor Heater	4100S02805	Intermittent	20170130007
DHC 8 402	Connector		Burnt	20170117016
DHC 8 402	Ice Detector Probe	5109201	Internal Failure	20170320011
DHC 8 402	Fuse Pin		Faulty	20170327006
			Destroyed	
DHC 8 402	Outer Bearing	2967520629	Roller	20170228022
DHC 8 402	Nose Landing Gear Door Sensor	401020101	Failed	20170220007
DHC 8 402	Rod End Assembly	P3A6460	Adjusted	20170214010
DHC 8 402	Solenoid Sequence Valve	483025	Failed	20170316002
DHC 8 402	Solenoid Sequence Valve	483025	Failed	20170109012
DHC 8 402	Bearings		Destroyed	20170302009
DHC 8 402	Tire	DR0231T	Ruptured	20170113006

Make/Model	Part Name	Part Number	Part Condition	SDR No.
DHC 8 402	Cable Assembly Nose Wheel Sensor	82410453003	Intermittent	20170309005
DHC 8 402	Protective Breathing Equipment	1190031121	Faulty	20170308016
DHC 8 402	Velcro		Unserviceable	20170112003
DHC 8 402	Proximity Sensor Assembly Door	401020101	Failed	20170306002
DHC 8 402	Fuselage Skins	85360131	Chafed	20170222005
DHC 8 402	Terminal Block Assembly	82450253001	Burned	20170116010
DHC 8 402	Power Control Unit Bracket	85517347001	Pieces	20170125024
DHC 8 402	Pilot Windshield	8SC5050007	No Heat	20170103012
DHC 8 402	Windshield		Cracked	20170213001
DHC 8 402	Left-Hand Cowl Door	87144003	Separated	20170116006
DHC 8 402	Duct Ot Switch	8209083B	Leaking	20170103010
DHC 8 402	High Pressure Shut Off Valve		Sluggish	20170109004
Diamond - As			Cracked/Broke	
DA 42	Bell Crank Flap Fuselage	D602757110001	Of	20170214018
DA 42	Gear Cylinder Shaft	X1100060200001	Not Secured	20170118001
DA 42	Pin/Bolt	D6055401160	Shifted	20170116003
Diamond - Can				
DA 20 C1	Alternator Bolt	2224120001	Broken	20170203001
DA 20 C1	Pilot Step	2052100300	Broke	20170324003
DA 20 C1	Pilot Step	2052100300	Broke	20170324004
DA 20 C1	Muffler Assembly	DC00011	Cracked	20170118010
Dornier				
228 202	Terminal Lug	33465	Corrosion	20170323013
Douglas				
DC10 30F	Cylinder Assembly-Main Landing Gear Bungee	39140165503	Broken	20170224009
DC3C	Lower Light Plate Assembly	21103503	Overheated	
Embraer			Cover	20170125023
EMB 500	Main Landing Gear Leg Strut Right-Hand Assembly	23171100406	Misaligned	20170220003
EMB 505	Check Valve	L9619007P4	Faulty	20170213006

Make/Model	Part Name	Part Number	Part Condition	SDR No.
		80300022AND8030		
ERJ 170 200 SU	Oxygen Generator	0	Un-Used	20170112007
ERJ 190 100 IGW	Emergency Locator Transmitter	4535000	Failed	20170106008
ERJ 190 100 IGW	Bleed Pressure Release Valve	10139521	Failed	20170116004
ERJ 190 100 IGW	Bearing	19009379901	Failed	20170314023
Eurocopter France				
EC 130 B4	Co-Pilot Windscreen	350A25904820	Cracked	20170314015
EC 130 B4	Center Windshield	350A25902500	Cracked	20170202007
EC 130 B4	Left-Hand Windshield	350A25904720	Cracked	20170202006
EC 130 B4	Right-Hand Windshield	350A25904320	Cracked	20170202005
EC 130 B4	Tail Rotor Blade Assembly	350A33300201	Unserviceable	20170314016
EC 130 B4	Tail Rotor Blade Assembly	350A33300202	Unserviceable	20170314020
EC 130 T2	Input Nut	DHS43911142	Split/Broken	20170223015
Fairchild				
SA227AC	Aft Scavenge Pump	31082822	Seized	20170109018
SA227DC	Squat Switch	602EN6026	Intermittant	20170109007
Grob-Werke				
G120A	Rod End	X030044020000	Bearing Loose	20170210012
Hawker Siddeley-Uk				
HS 748 2A	Oil Cooler	RK35782A	Leaking	20170214009
Hughes				
			Worn Beyond	
369D	Sprag	369D25351	Limit	20170203014
369D	Blower Belt	369D25623	Worn	20170214017
Learjet				
45	Bolt	NAS62034	Loose	20170118005
Mitsubishi - Usa				
MU 2B60	Right-Hand Strut	030A393029	Cracked	20170324002
Mooney				
M20C	Splice Plate Main	210012000	Cracked	20170306012
M20C	Truss Assembly Lower Left-Hand	340155201	Corroded	20170306013
Piaggio				

Make/Model	Part Name	Part Number	Part Condition	SDR No.
P180 AVANTI II	Auxiliary Fuel Tanks - Left-Hand & Right-Hand	80207131401402	Chafed	20170330009
Pilatus - Sw				
PC 12 47	Wire #H32a22		Chafed	20170309013
PC 12 47E	Duct Temp Sensor	4231C000	Faulty	20170308008
PC 12 47E	Emergency Locator Transmitter	S182150202	False Indication	20170221013
PC 12 47E	Bolt	9321960445	Missing	20170221012
PC 12 47E	Disk Rotor	15907400	Broken	20170131016
Piper				
PA23 250	Bolt Connecting Rod		Brise	20170313010
PA23 250	Power Booster Converter	AK55048	Burnt	20170327014
PA31 325	Hydraulic Brake Reservoir		Original	20170112002
PA31 350	Anchor Nut	MS21059L08	Locking Worn	20170227014
PA31 350	Throttle Control Cable	24894018554355	Used	20170325001
PA44 180	Hinge Bracket	8655402	Cracked	20170324007
PA44 180	Main Gear Actuator	96860003	Failed	20170118003
Raytheon				
HAWKER 900XP	Starter Generator	23080064	Overhauled	20170209007
Sikorsky				
S92A	#3 Hydraulic Pump	9265015820101	Malfunction	20170320008
Stinson				
108 3	Rear Wing Spar		Wear Damage	20170216008
Swearingen				
SA226TC	Regulating Valve	39290811	Leaking	20170123016
Viking Canada				
DHC 6 400	Pipe Assembly	C6PF1034115	In Service	20170313019
DHC 6 400	Pipe Assembly	C6PF1034115	Used	20170317012
Wagaero				
SUPER BROUSSE	Forward Bungee Bracket		Broken	20170329008
Engine				
Allison				
250-C20B	Forward Carbon Seal		Leaking	20170301012

Make/Model	Part Name	Part Number	Part Condition	SDR No.
501-D13	Engine Bleed Air Duct	8358461	On Condition	20170317013
Austro Engine				
E4-A	Austro Engine	E4A00000000	Oil Leaking	20170106003
Avco Lycoming				
AEIO-360-A1B6	Distributor Block Assembly	K3822	Loose	20170315014
IO-540-AE1A5	Condenser	10400615J	Unserviceable	20170223012
IO-540-AE1A5	Tach Points	ES10361631	Unserviceable	20170310007
LF-507-1F	Engine	LF5071F	On Condition	20170222006
LO-360-A1H6	Cylinder	05K21104	Damaged	20170310004
O-320-D2J	Cylider	LW12397	Perforated	20170321014
O-360-A4K	Cylinder	LW12427	Scrap	20170330008
TIO-540-AE2A	Gasket	78084	Unserviceable	20170313022
TIO-540-F2BD	Gasket	06B23072	Used	20170316004
Cfm International				
CFM56-5B3	Forward Engine Mount	238020033	Overhauled	20170227010
CFM56-5B6	Electronic Control Unit Control	2123M56P01	Failed	20170109002
CFM56-7B27/E	High Pressure Turbine Valve	1821M59P06	Worn	20170216010
Garrett				
TPE331-10	Turbine Rotor	310210910	Unserviceable	20170113010
TPE331-10-511M	Turbine Rotor	310210610	Unserviceable	20170130011
TPE331-10UA-511G	Planetary Gear Bearing	3582681	Overhauled	20170120011
General Electric				
CF34-3B1	Engine Air Starter	35051889	Cowling Blew Off	20170309001
Honeywell				
AS907-1-1A	Panel Assembly Fan Duct	WBA7270E303042	Missing	20170314028
Pratt & Whitney-Can				
PT6A-28	Fuel Line	3011849	Cracked	20170109005
PT6A-42A	Second-Stage Power Turbine Blade	304426301	Unserviceable	20170223013
PT6A-67	Compressor Inlet Case	307208901	Scrap	20170316001
			Missing	
PT6A-67D	No 2 Flanged Roller Bearing	3006146	Bearing	20170126010

Make/Model	Part Name	Part Number	Part Condition	SDR No.
PT6A-67R	Turbine		Failure	20170308009
PW120A	Low Pressure Stator Assembly	3055642C601	Unserviceable	20170125018
PW121	Low Pressure Stator Assembly	3055642CL01	Unserviceable	20170131010
PW121	Turbine		Unserviceable	20170307022
PW123B	Turbine Interstage Case Assey	305288501	New	20170130001
PW123D	High Pressure Blade	311560101	Scrap	20170315010
PW124B	Ignitor Plug	CH34817	Unserviceable	20170307024
PW127	Intercompressor Bleed Valve	307177401	Unserviceable	20170321017
PW1500G	Probe P2 5/T2 5	1018346	New	20170313001
PW150A	Reduction Gearbox	31263001	Deteriorated	20170306003
PW150A	Turbo Propeller Engine	307355801	Unserviceable	20170217012
PW150A	Engine	PW150A	Oil Leak	20170328009
Pratt & Whitney-Usa				
JT8D-17	Front Support	633758	Cracked	20170215010
PW1521G3	Engine	P735926	Debris	20170201010
Rolls Royce - Gy				
AE-3007A1/P	Coverplate Seal Ring	23055240	Torn	20170317007
Rolls Royce - Uk				
RB211-535E4-37	Line	UL18997	Unserviceable	20170123015
Teledyne Continental				
IO-240-B	Fuel Pump	6533513A5	Leaking	20170308018
IO-240-B	Fuel Pump	6533513A5	Leaking	20170324008
TSIO-520-NB	Cylinder	654962	Cracked	20170310001
Turbomeca				
ARRIEL 1D1	Drain Valve	174120070	Leaking	20170320009
Rotorcraft				
Dowty Rotol				
R408/6-123-F/17	Propeller Control Unit	699018003	Malfunction	20170113004
R408/6-123-F/17	Propeller Electronic Control	699018003	Faulty	20170227002
Hamilton Standard				
14SF-19	Propeller Retaining Nut	7847761	Missing Cracked	20170314027

Make/Model	Part Name	Part Number	Part Condition	SDR No.
14SF-23	Blade	SFA13N1ROACD	Corroded	20170105010
14SF-5	Propeller Blade	SFA13M1R0AD	Cap Braken	20170206025
14SF-7	Prop Control Unit	78249050	Failed	20170110020
Hamilton Sundstrand Propeller	Propeller Blade	SFA13N1ROAD	Cracked Chrome	20170120008
Propeller Hartzell	Propeller Actuator	7901802	Chipped	20170206012
HC-D4N-3A	Preload Plate Assembly	100641	Incorrect Part	20170307029
HC-D4N-3A Equipment	Thrust Plate Assembly	100641	Incorrect Part	20170307028
Airfasco AN5C16	Bolt Machine	AN5C16	Unserviceable	20170321013
Artex C4062HM	Main G-Switch		Failed	20170120007
ME406HM	Battery Assembly	4550012	Cracked	20170301013
Avco Lycoming O320D2J	Oil Filter (Tempest)	AA48111LOT2016C	New	20170111017
California Screw AN1032A	Bolt Shank	AN1032A	Used	20170220012
Cmc CMA200100602609001	Assembly	245655034001	Failure	20170127006
Dart Aerospace D350578115	Bear Paw	D350578115	New	20170131024
Diehl Aero 308135	Ballast Unit	308135	Melt	20170113011
Teledyne Continental 107902010	Capacitor	1051676	Unserviceable	20170224007
Zodiac 11101B1B14	Breathing Tube	2895501	Developing Holes	20170123013