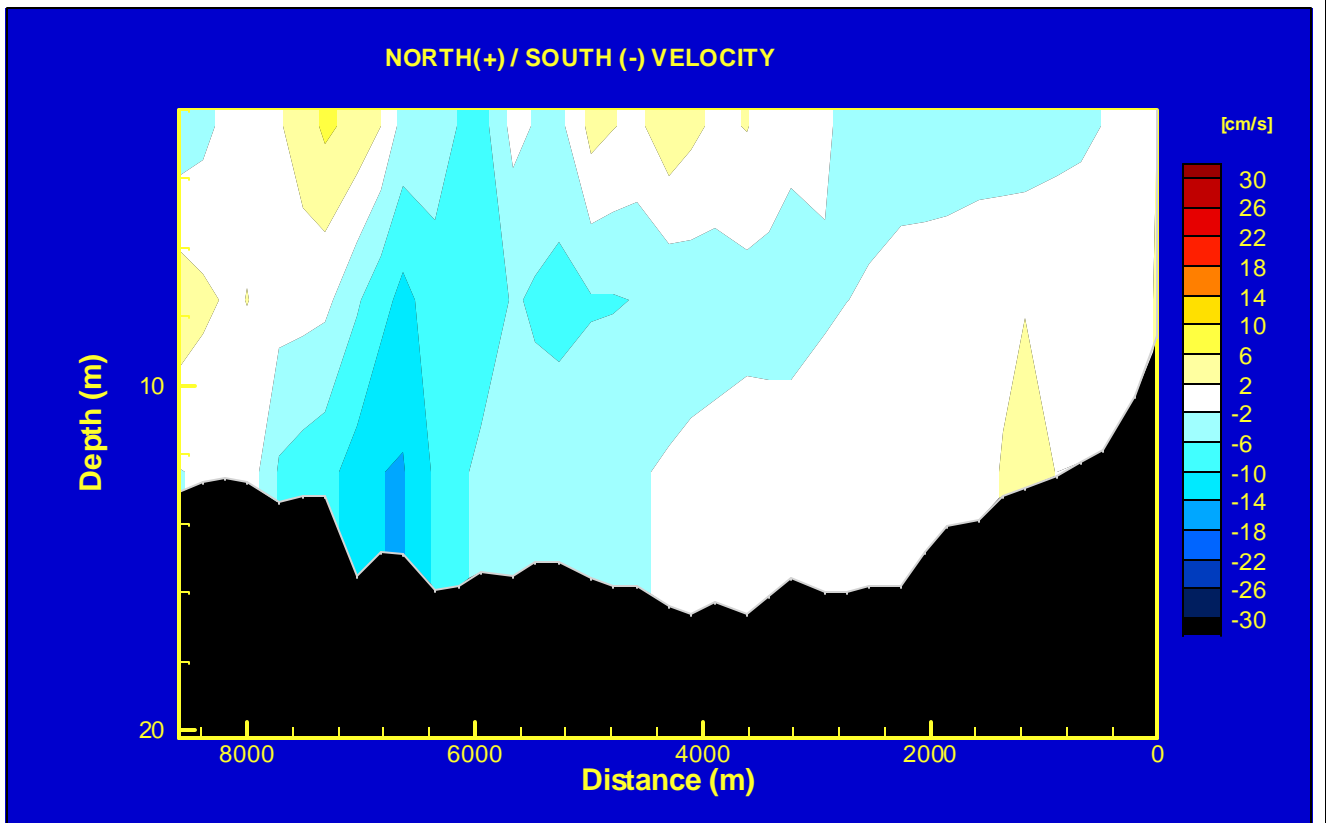
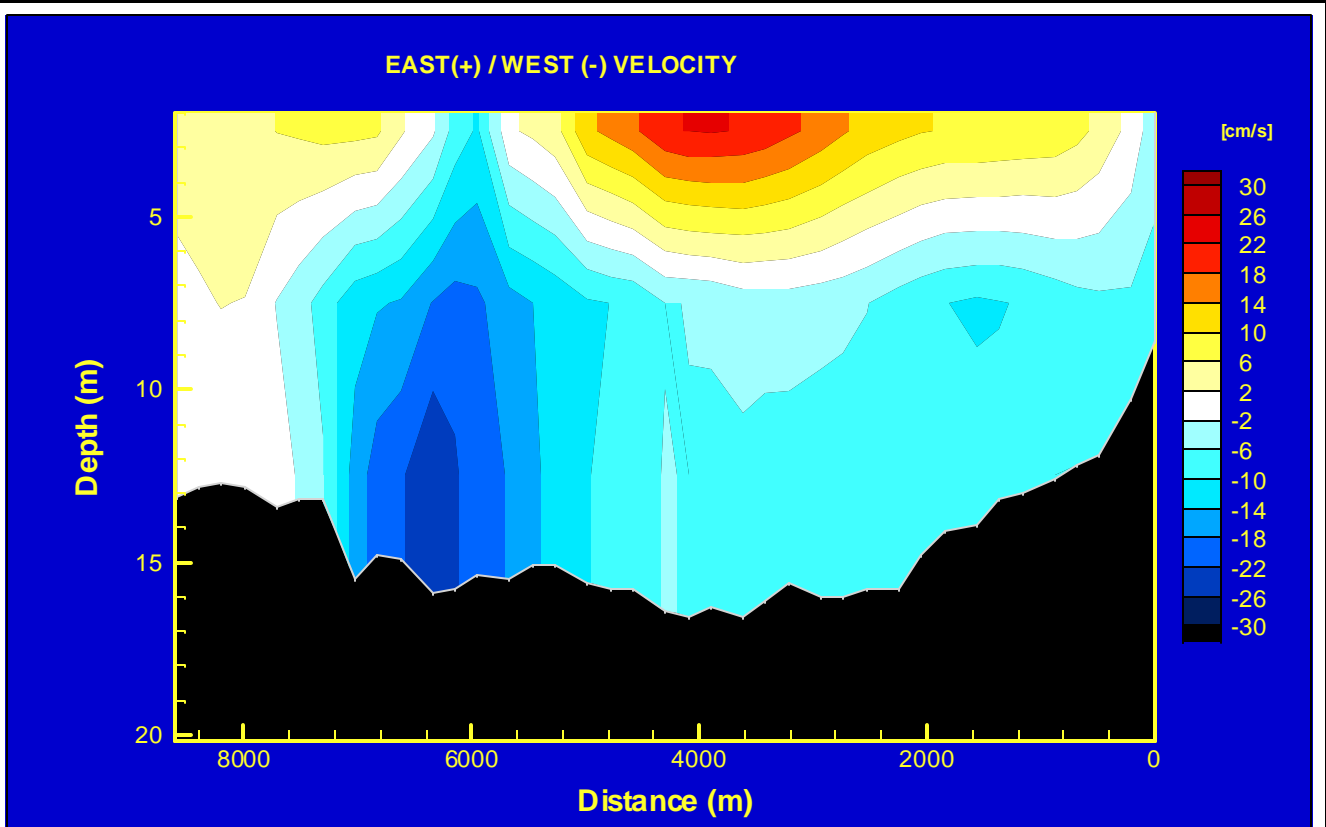

APPENDIX D
MODELLED VELOCITY SECTIONS ALONG TRANSECT

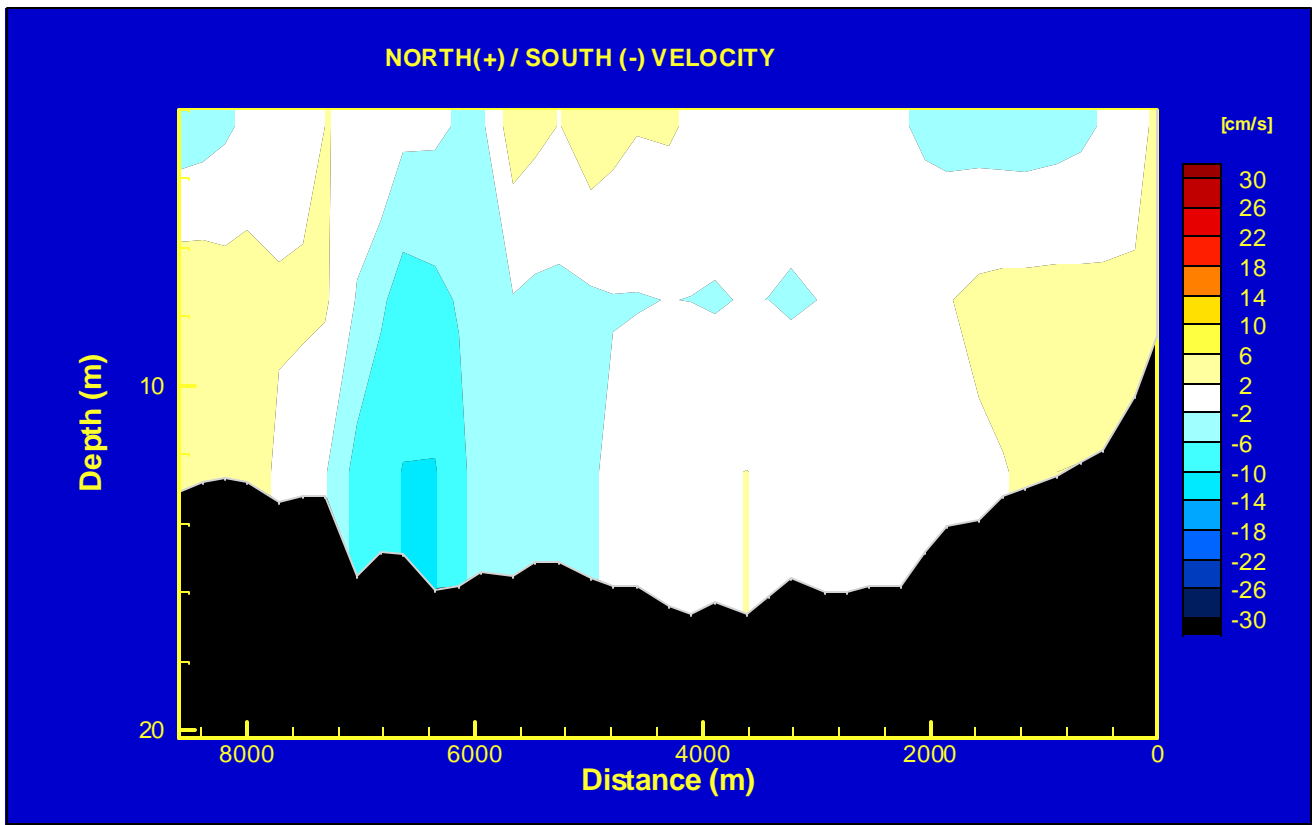
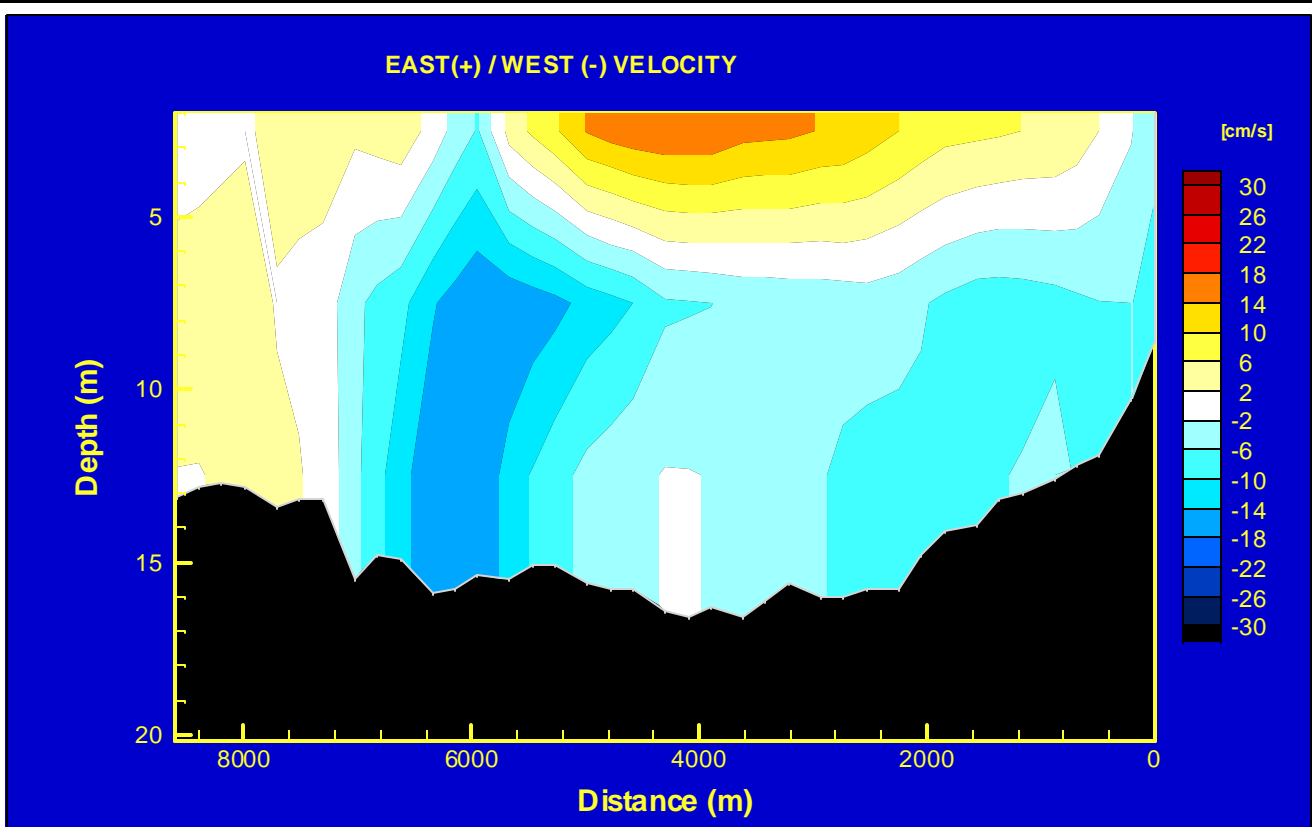


 HAY & COMPANY CONSULTANTS INC.

ENVIRONMENT CANADA
SEMIAHMOO BAY
CIRCULATION STUDY

MODELED VELOCITY TRANSECT
JULY 23, 2002 21:00 HR.

FIG.
D-1

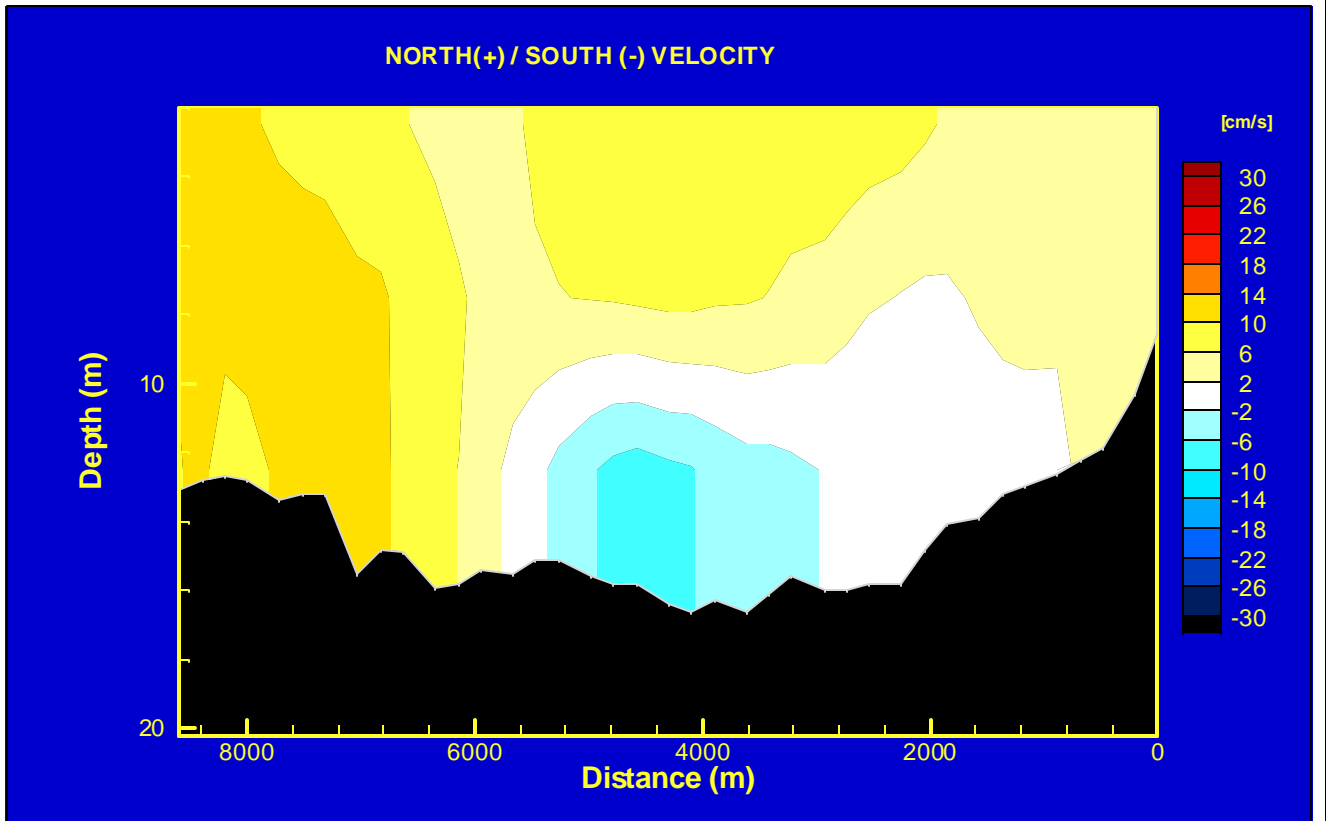
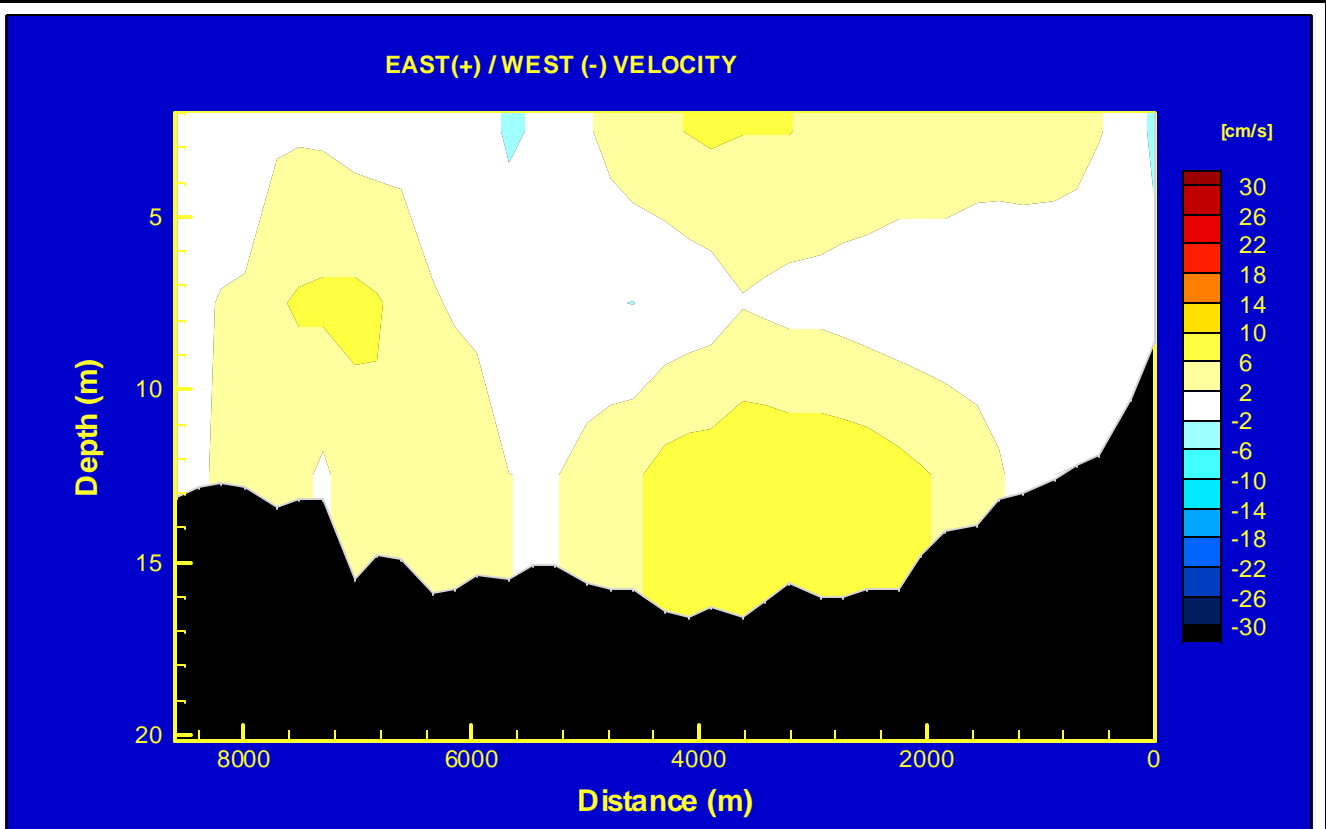


HAYCO HAY & COMPANY CONSULTANTS INC.

ENVIRONMENT CANADA
SEMIAHMOO BAY
CIRCULATION STUDY

MODELED VELOCITY TRANSECT
JULY 23, 2002 22:00 HR.

FIG.
D-2

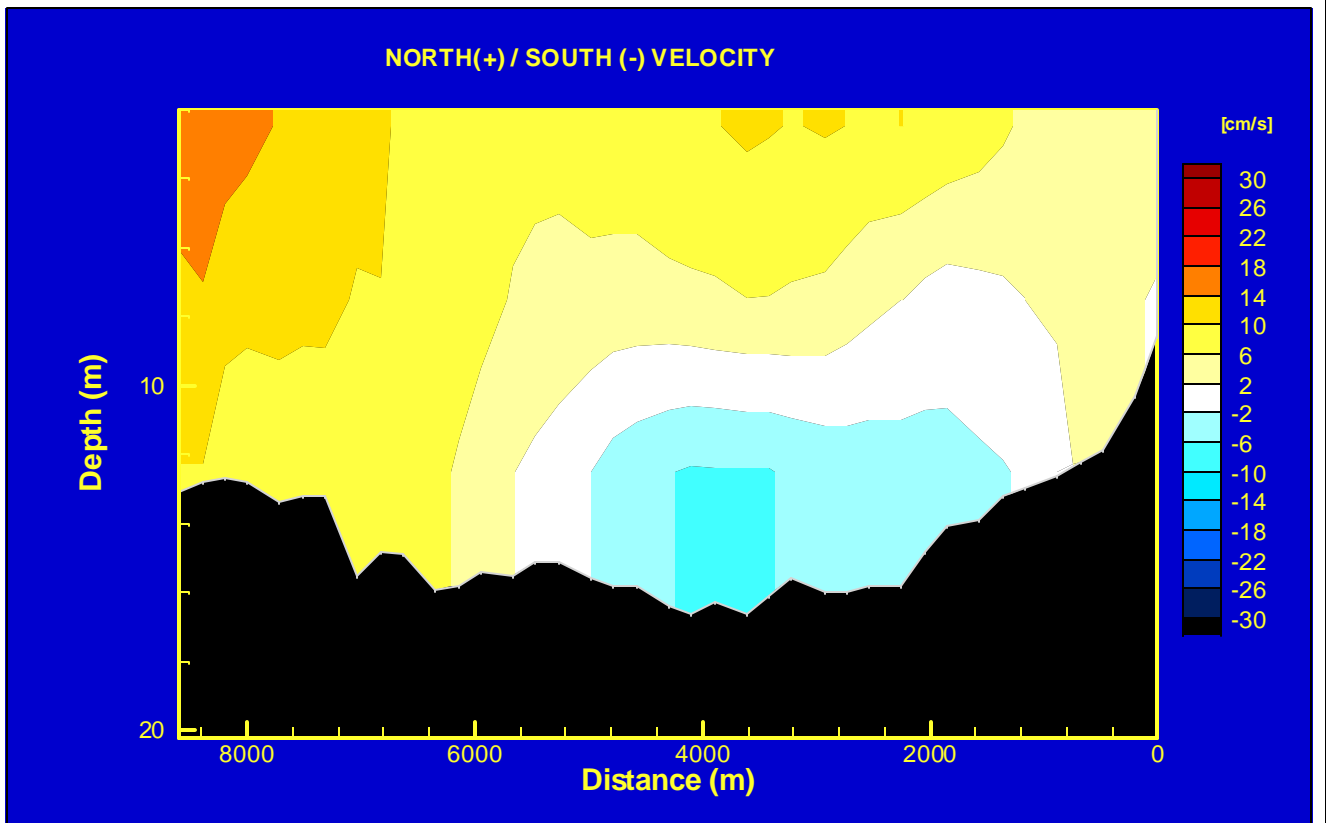
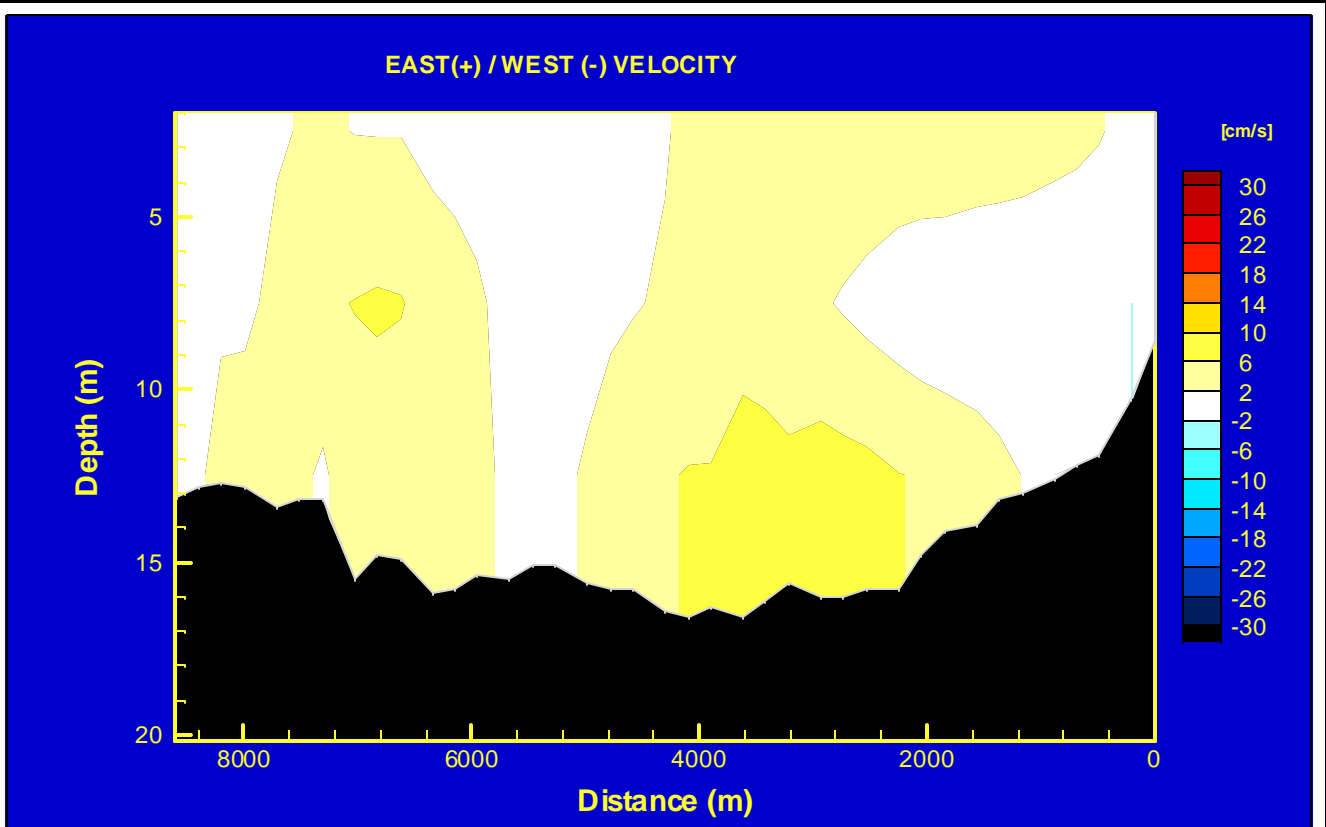


HAYCO
HAY & COMPANY CONSULTANTS INC.

ENVIRONMENT CANADA
SEMIAHMOO BAY
CIRCULATION STUDY

MODELED VELOCITY TRANSECT
JULY 24, 2002 01:00 HR.

FIG.
D-3

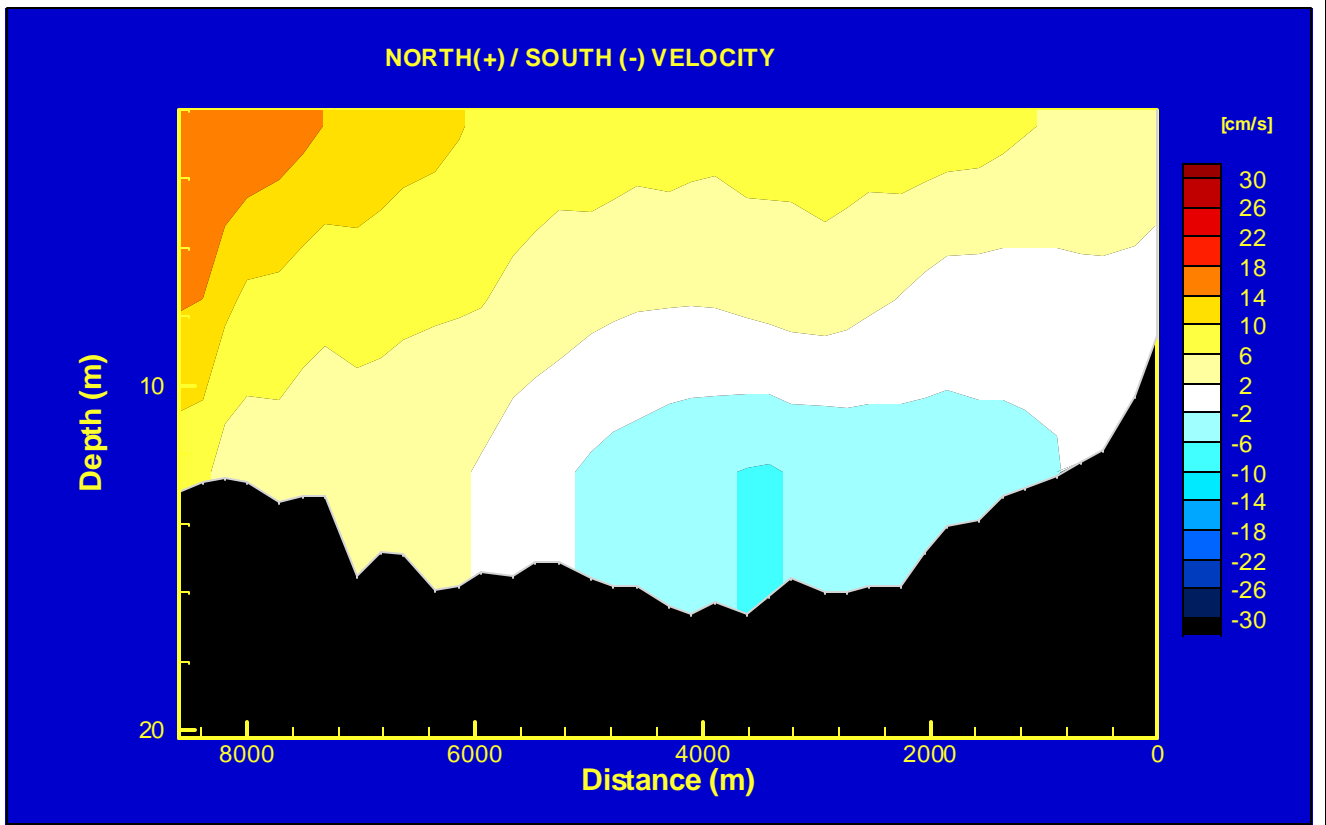
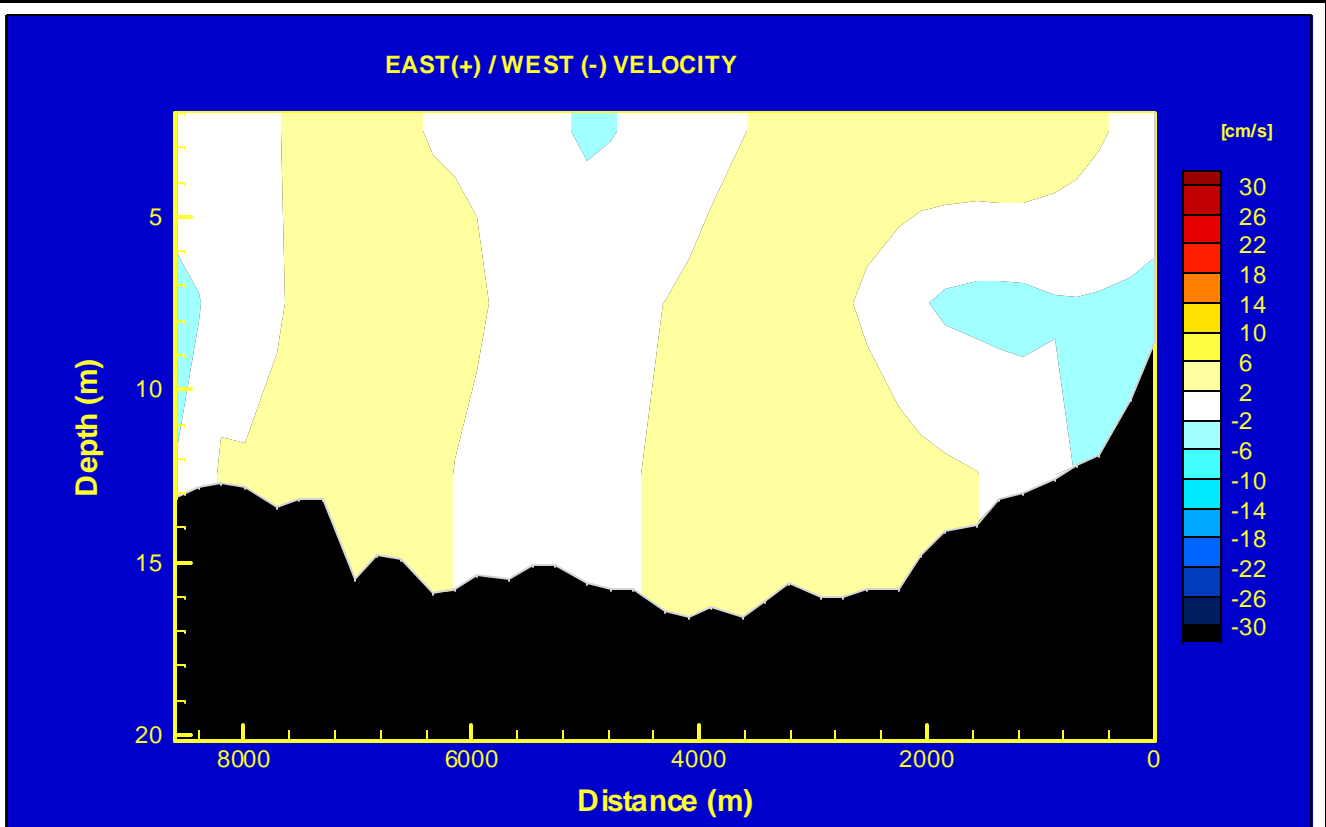


HAY & COMPANY CONSULTANTS INC.

ENVIRONMENT CANADA
SEMIAHMOO BAY
CIRCULATION STUDY

MODELED VELOCITY TRANSECT
JULY 24, 2002 02:00 HR.

FIG.
D-4

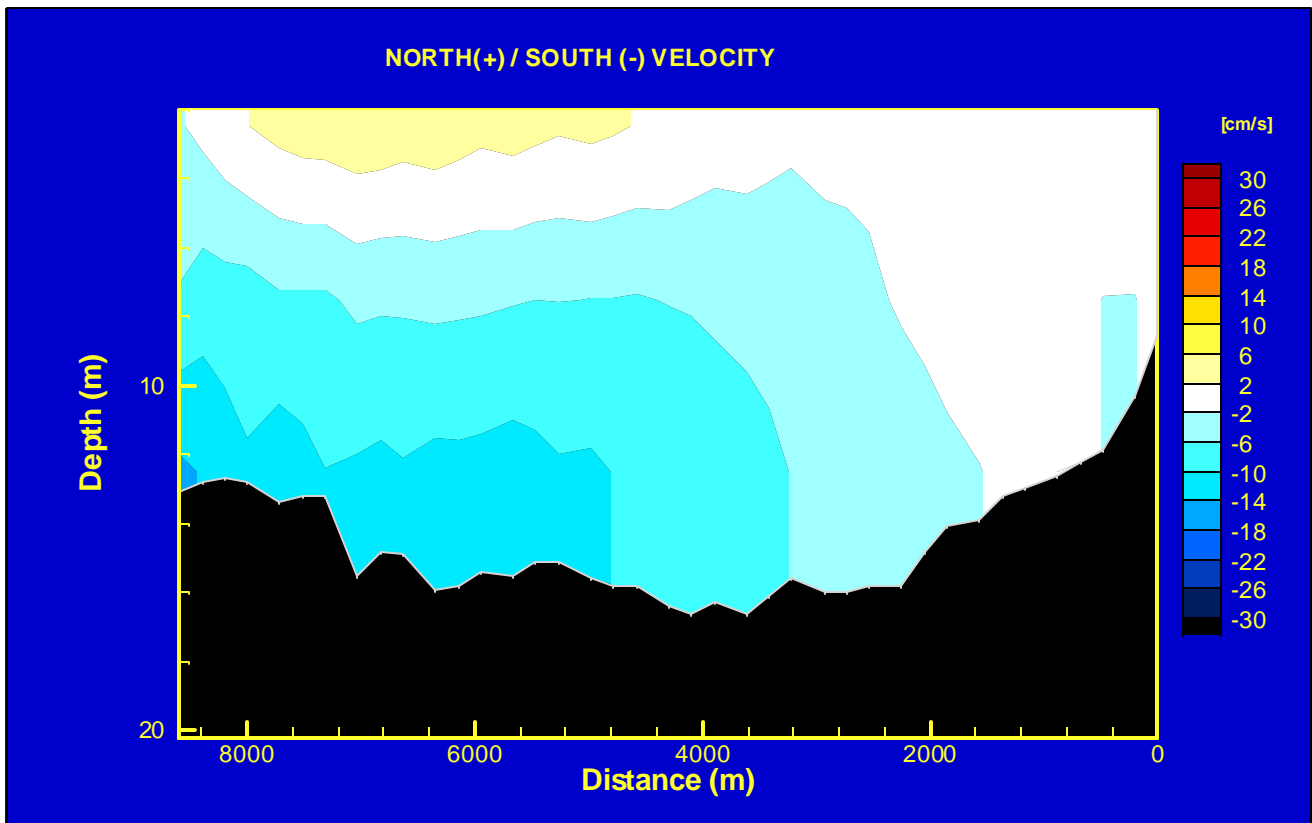
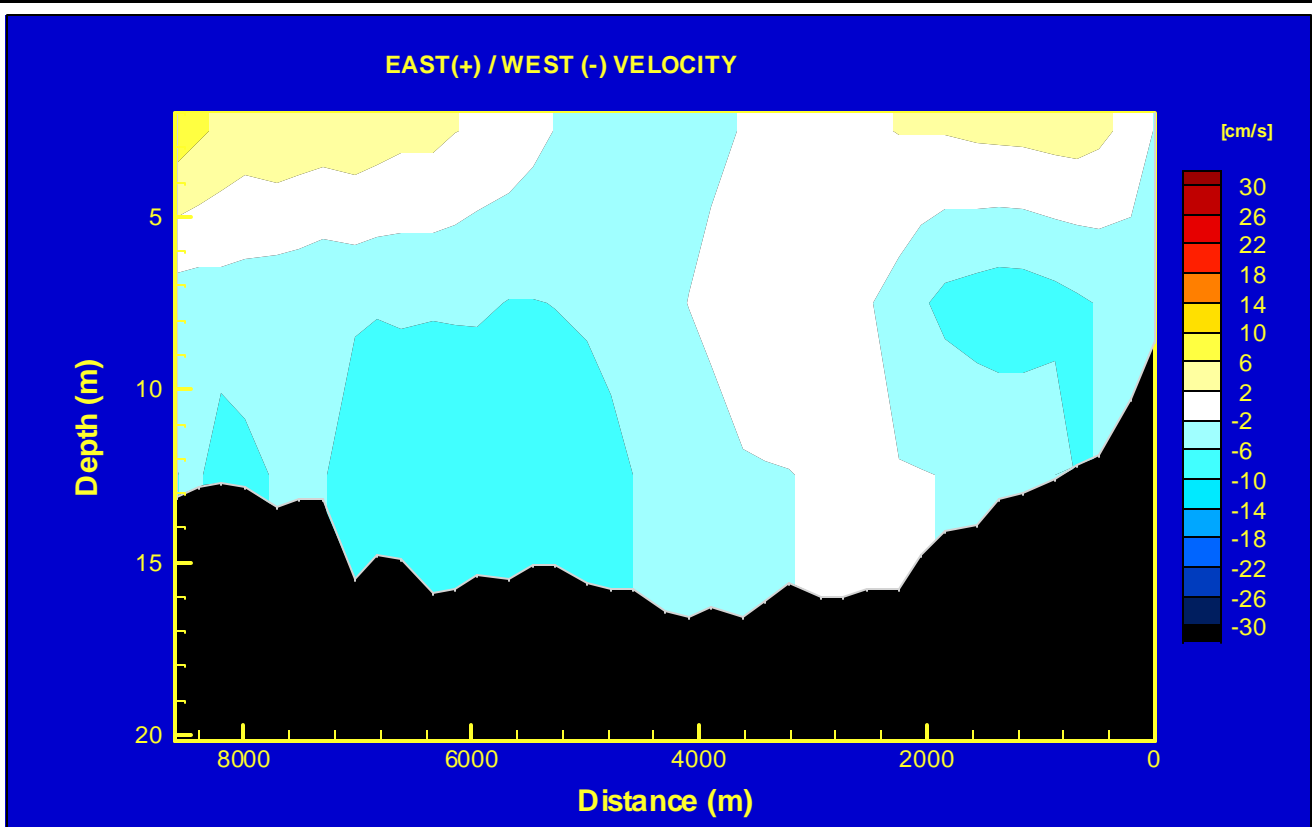


HAY & COMPANY CONSULTANTS INC.

ENVIRONMENT CANADA
SEMIAHMOO BAY
CIRCULATION STUDY

MODELED VELOCITY TRANSECT
JULY 24, 2002 03:00 HR.

FIG.
D-5

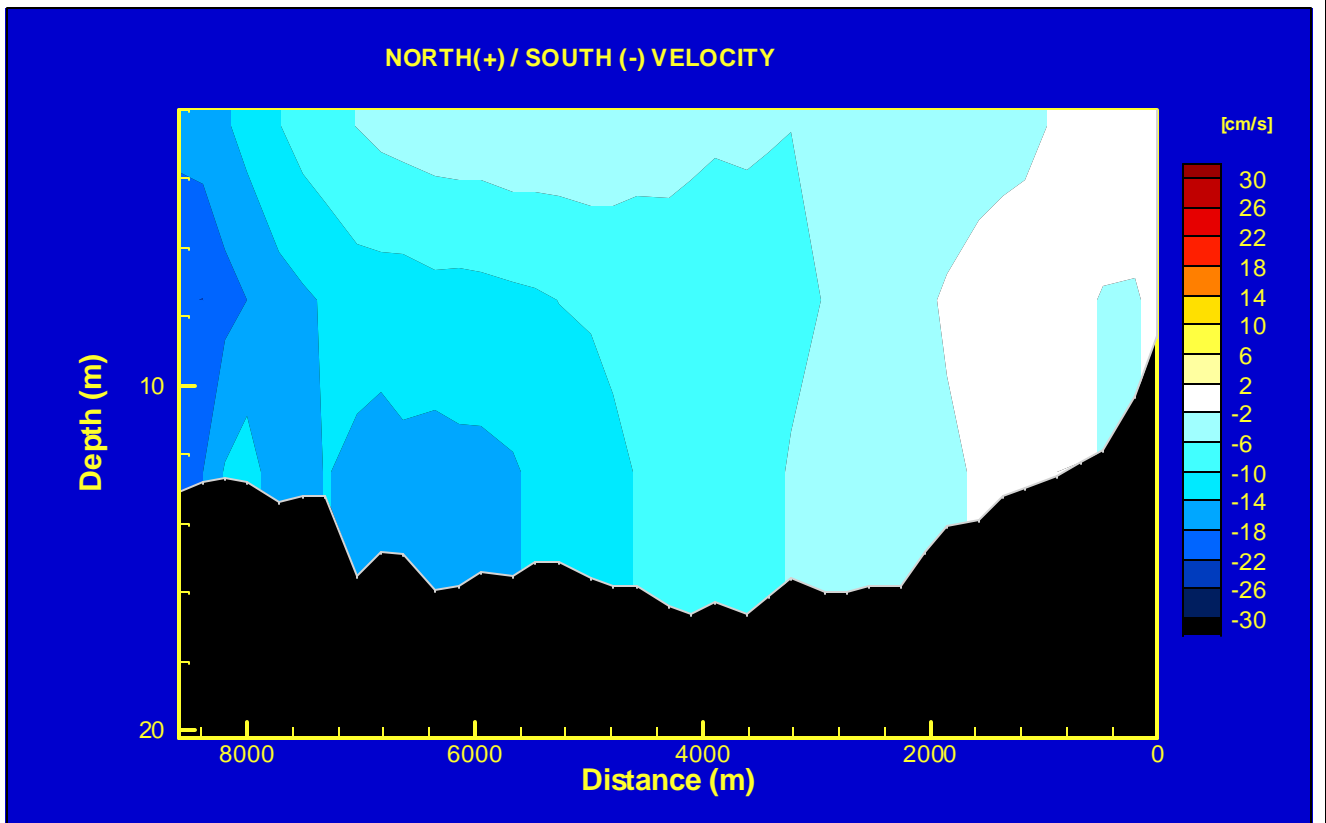
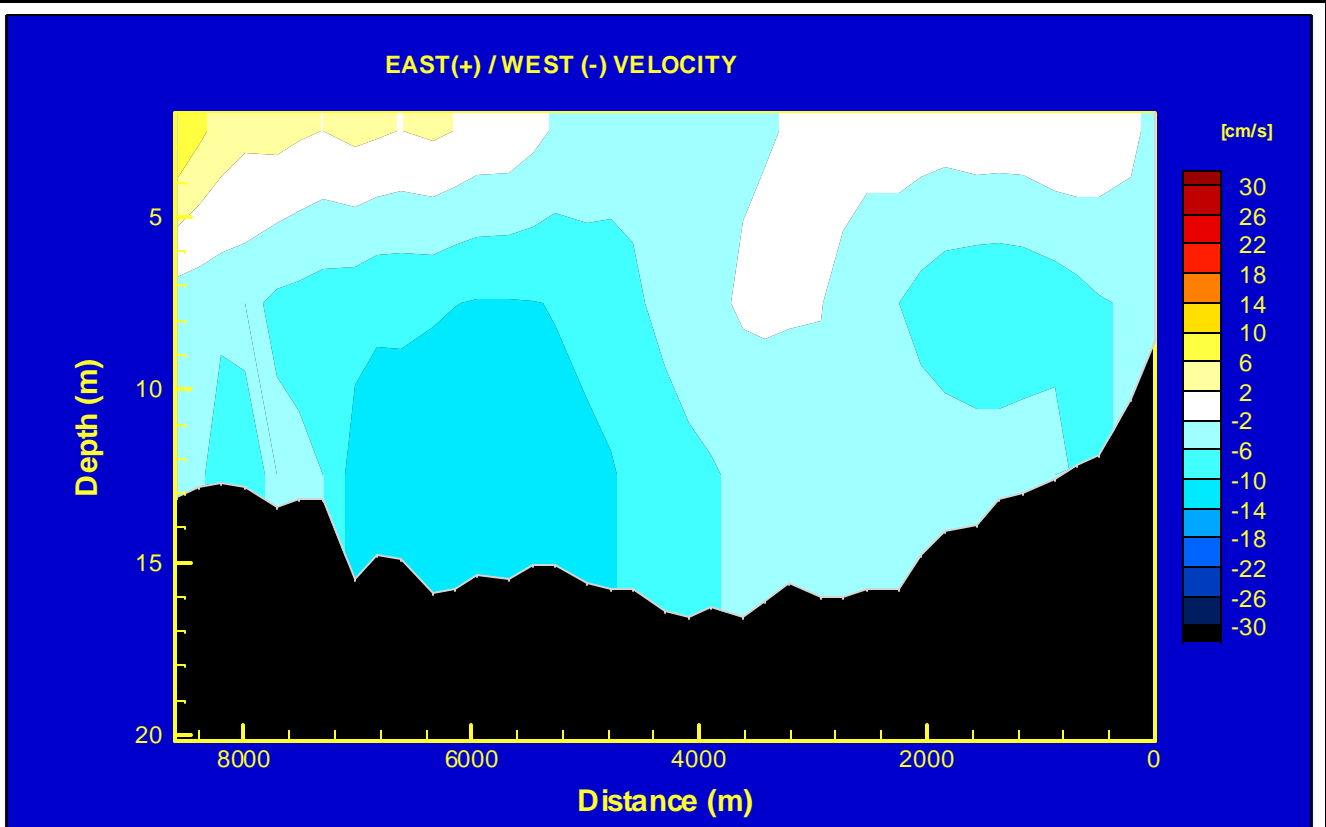


HAY & COMPANY CONSULTANTS INC.

ENVIRONMENT CANADA
SEMIAHMOO BAY
CIRCULATION STUDY

MODELED VELOCITY TRANSECT
JULY 24, 2002 05:00 HR.

FIG.
D-6

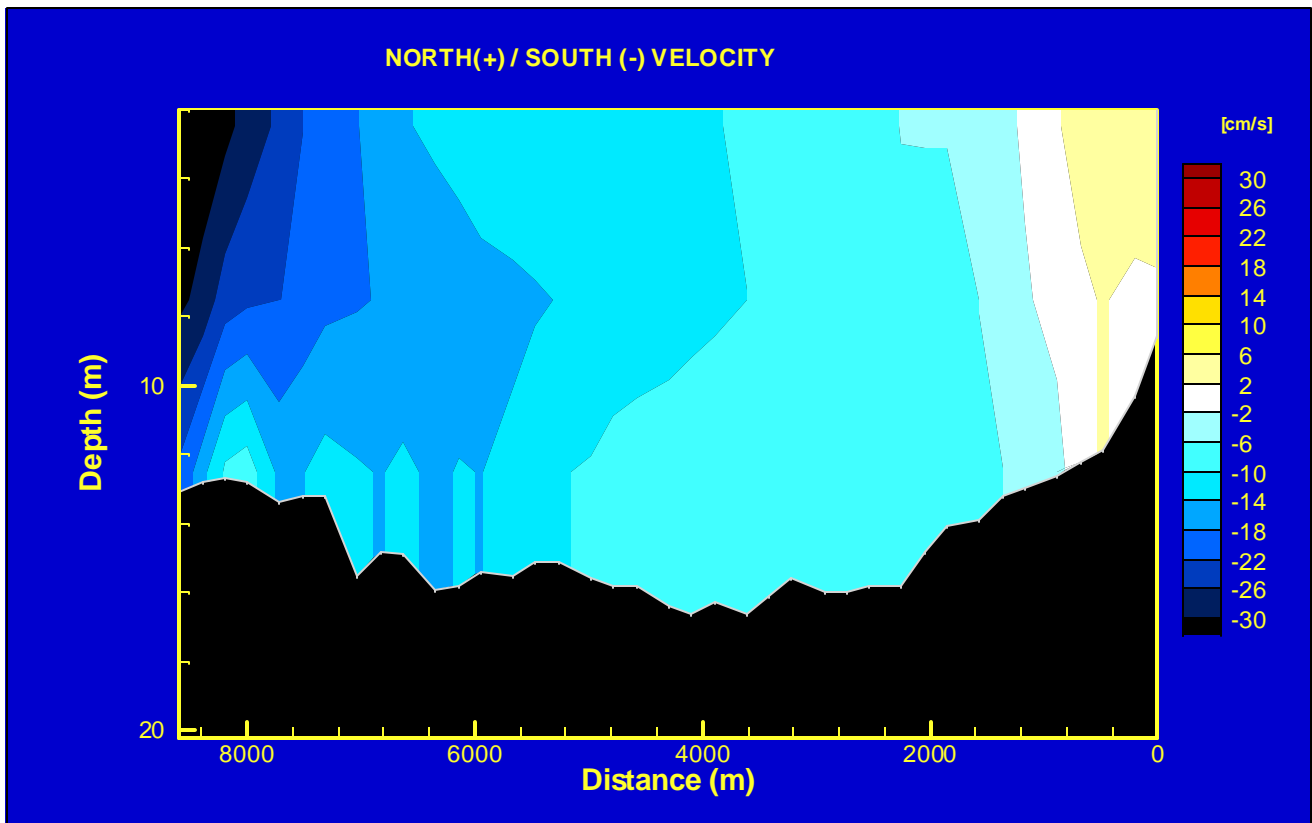
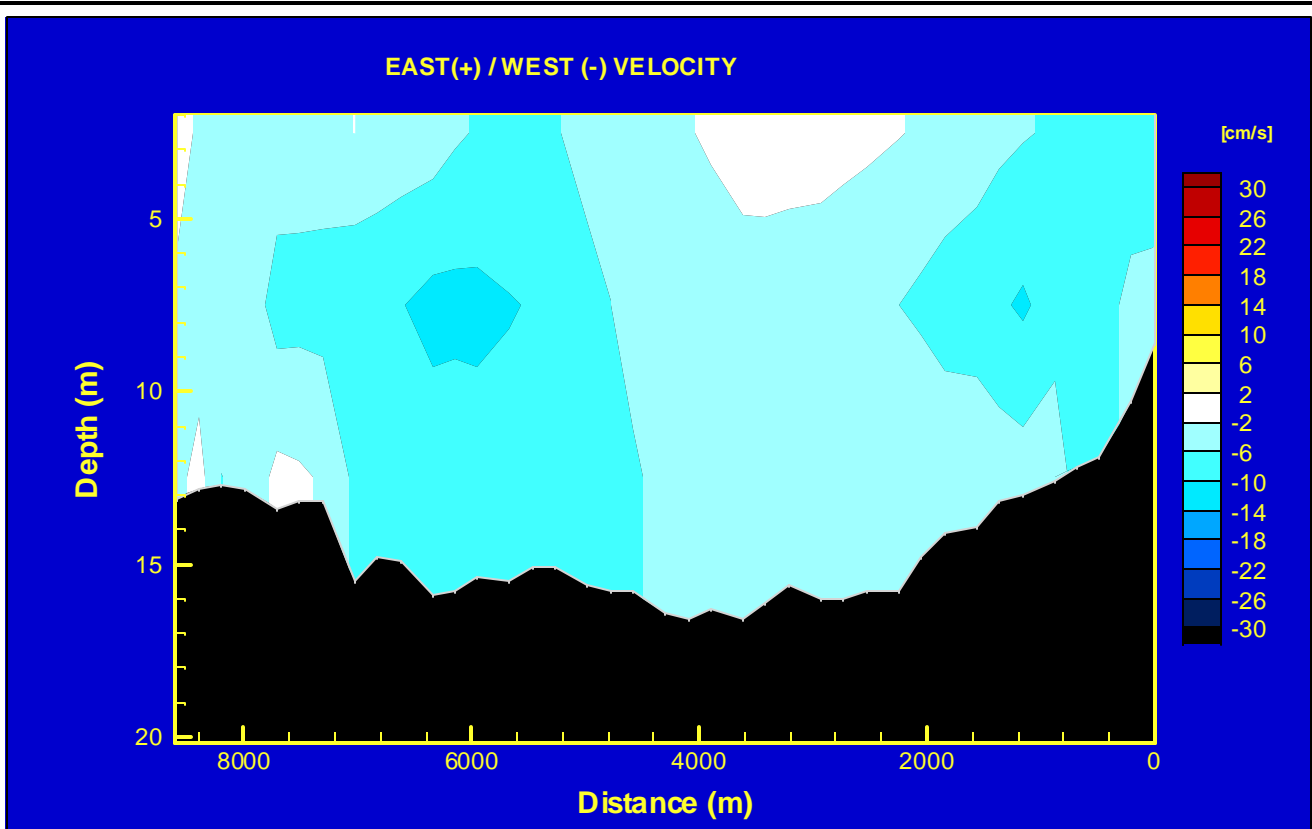


 HAY & COMPANY CONSULTANTS INC.

ENVIRONMENT CANADA
SEMIAHMOO BAY
CIRCULATION STUDY

MODELED VELOCITY TRANSECT
JULY 24, 2002 06:00 HR.

FIG.
D-7

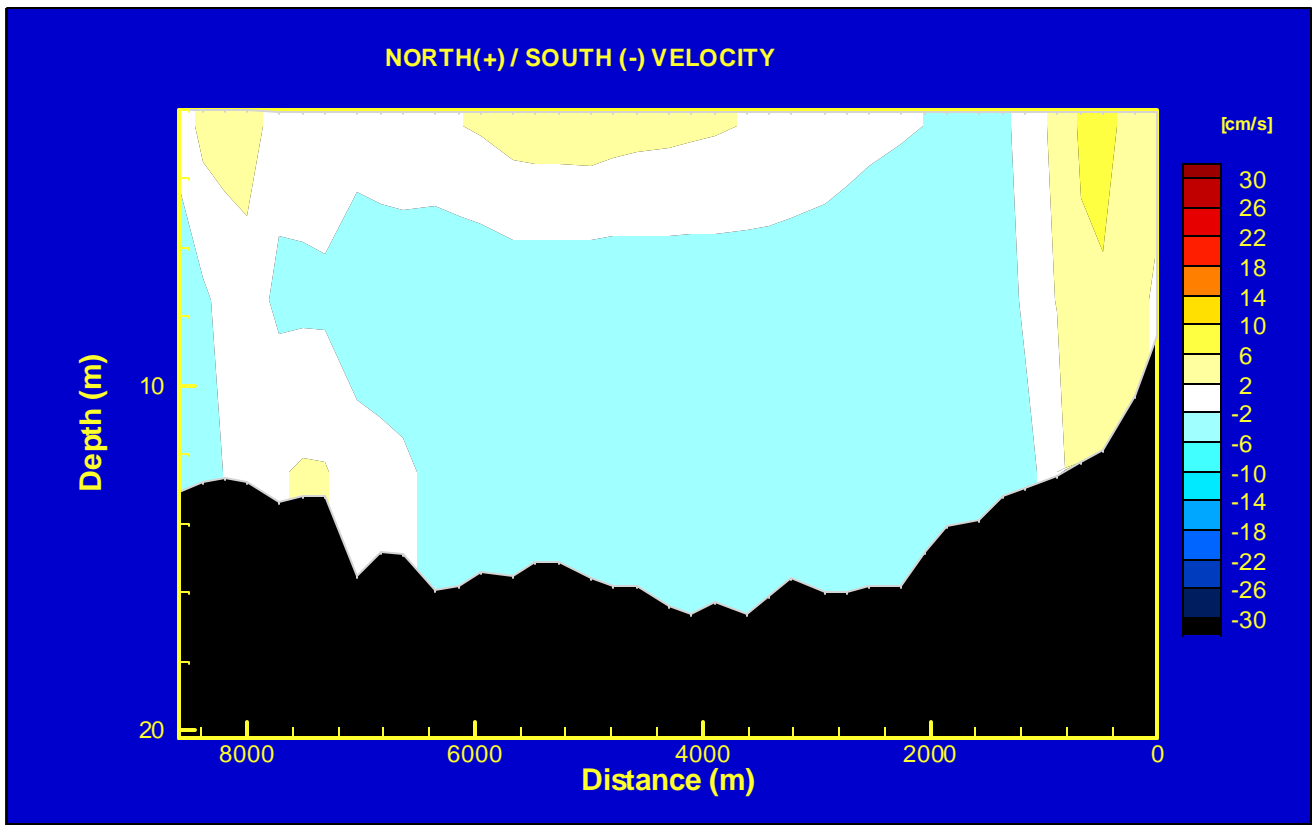
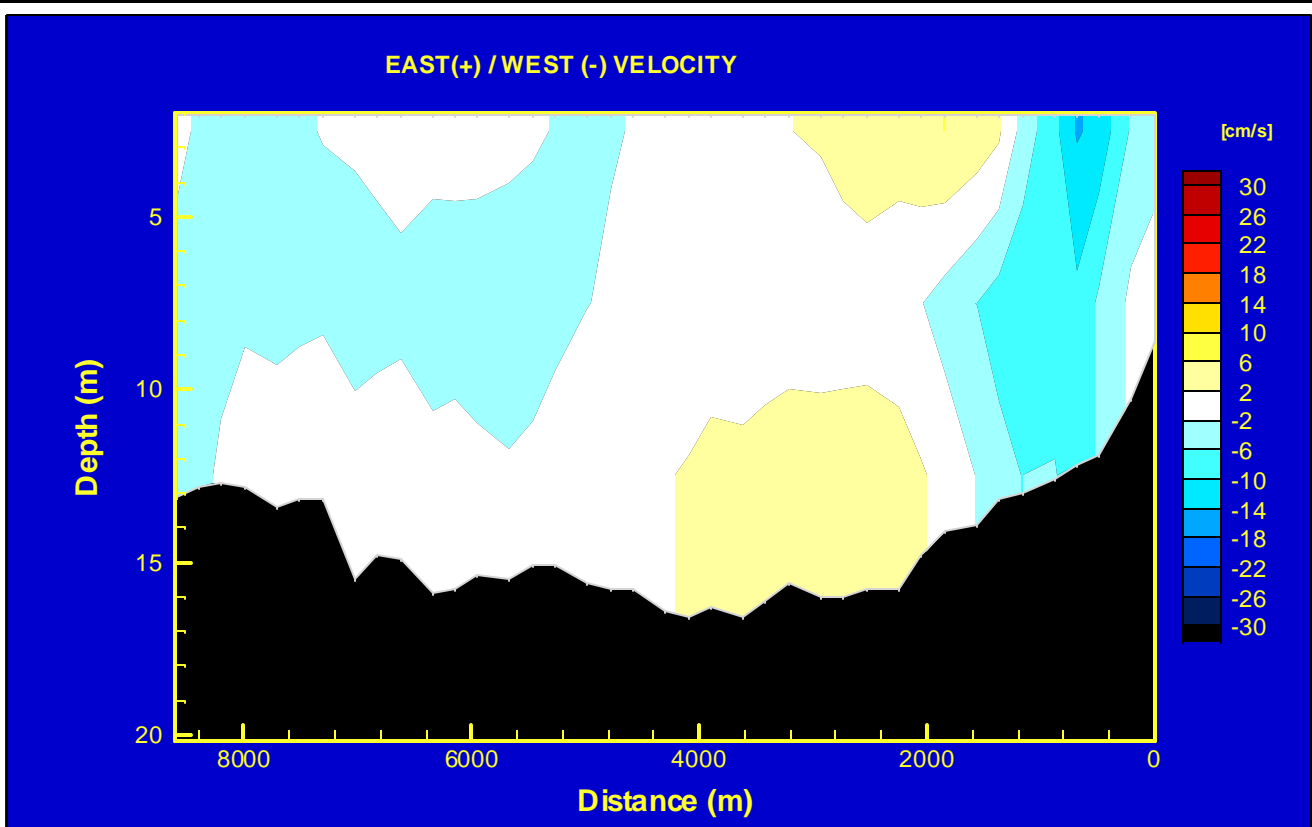


HAY & COMPANY CONSULTANTS INC.

ENVIRONMENT CANADA
SEMIAHMOO BAY
CIRCULATION STUDY

MODELED VELOCITY TRANSECT
JULY 24, 2002 09:00 HR.

FIG.
D-8

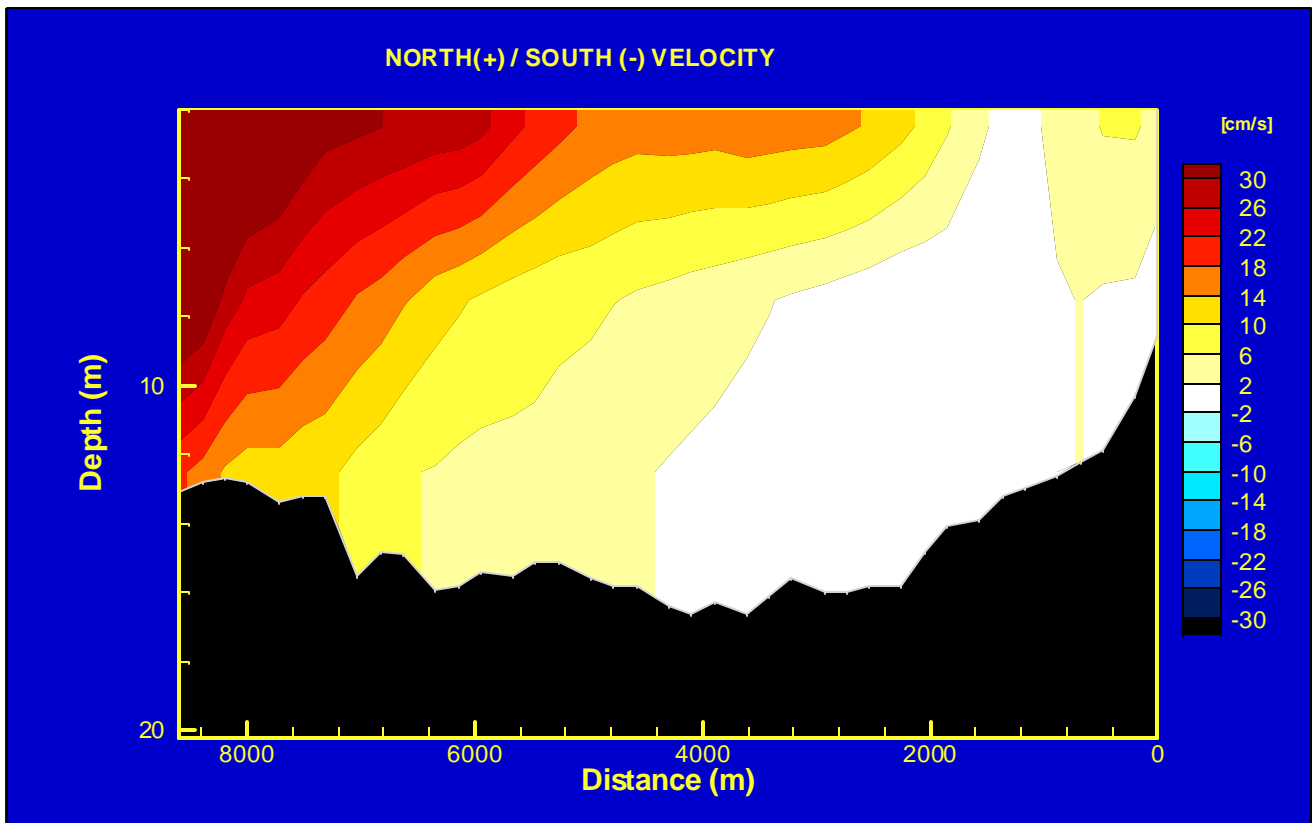
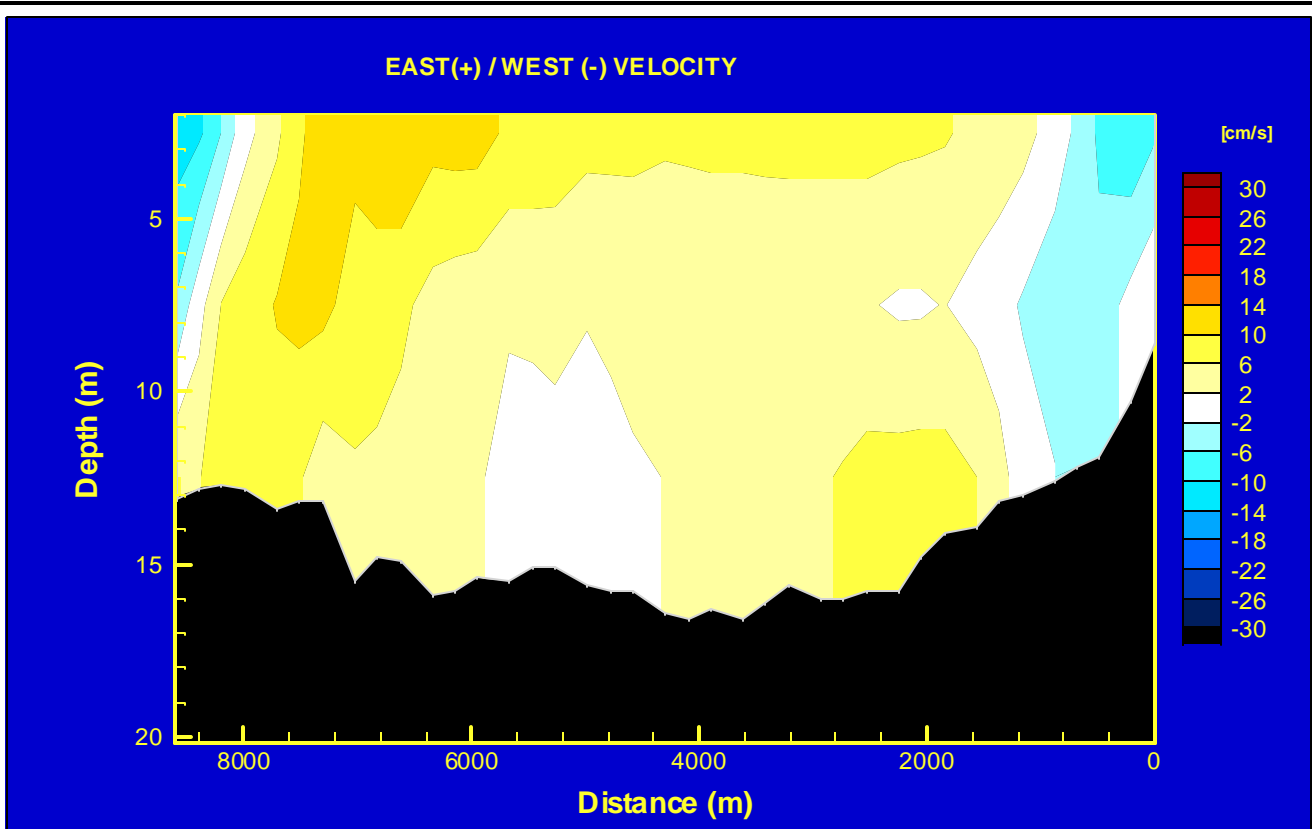


HAY & COMPANY CONSULTANTS INC.

ENVIRONMENT CANADA
SEMIAHMOO BAY
CIRCULATION STUDY

MODELED VELOCITY TRANSECT
JULY 24, 2002 11:00 HR.

FIG.
D-9

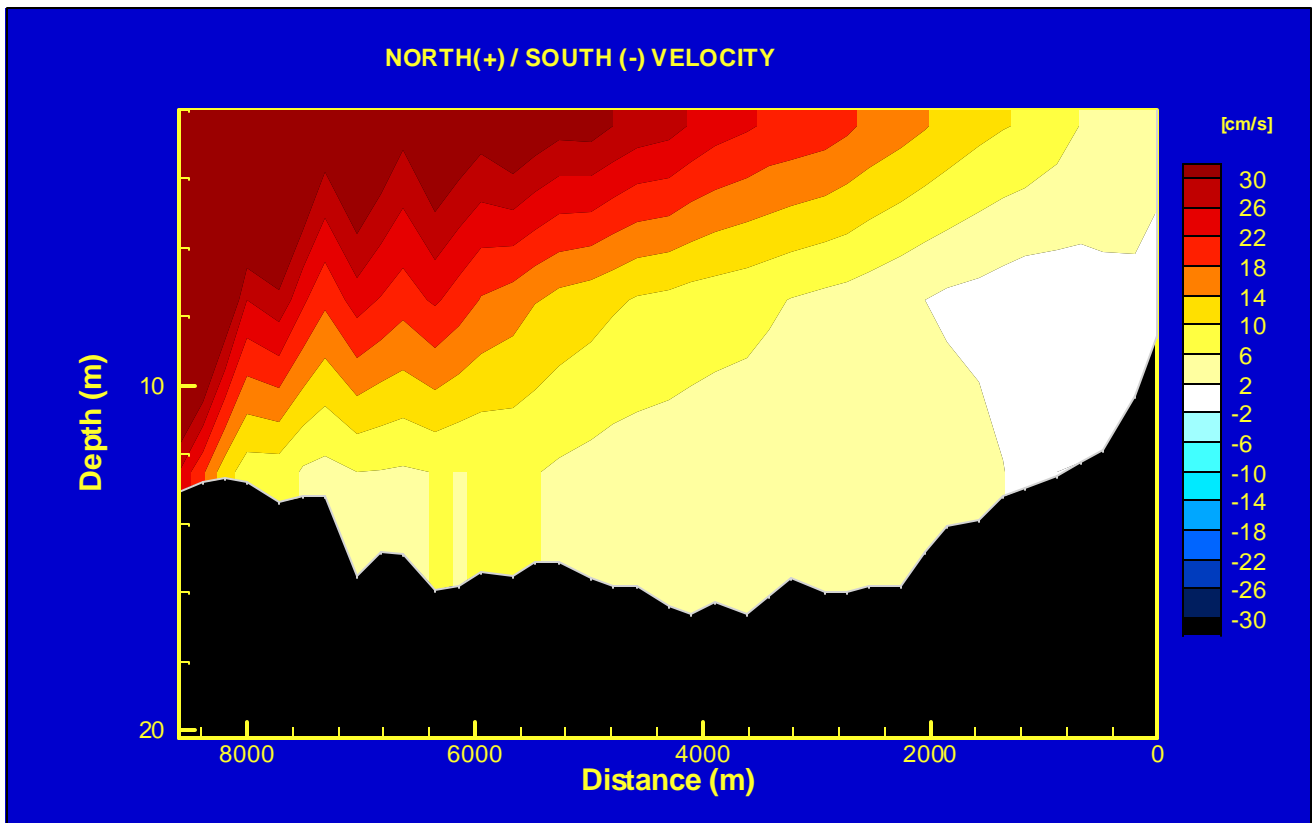
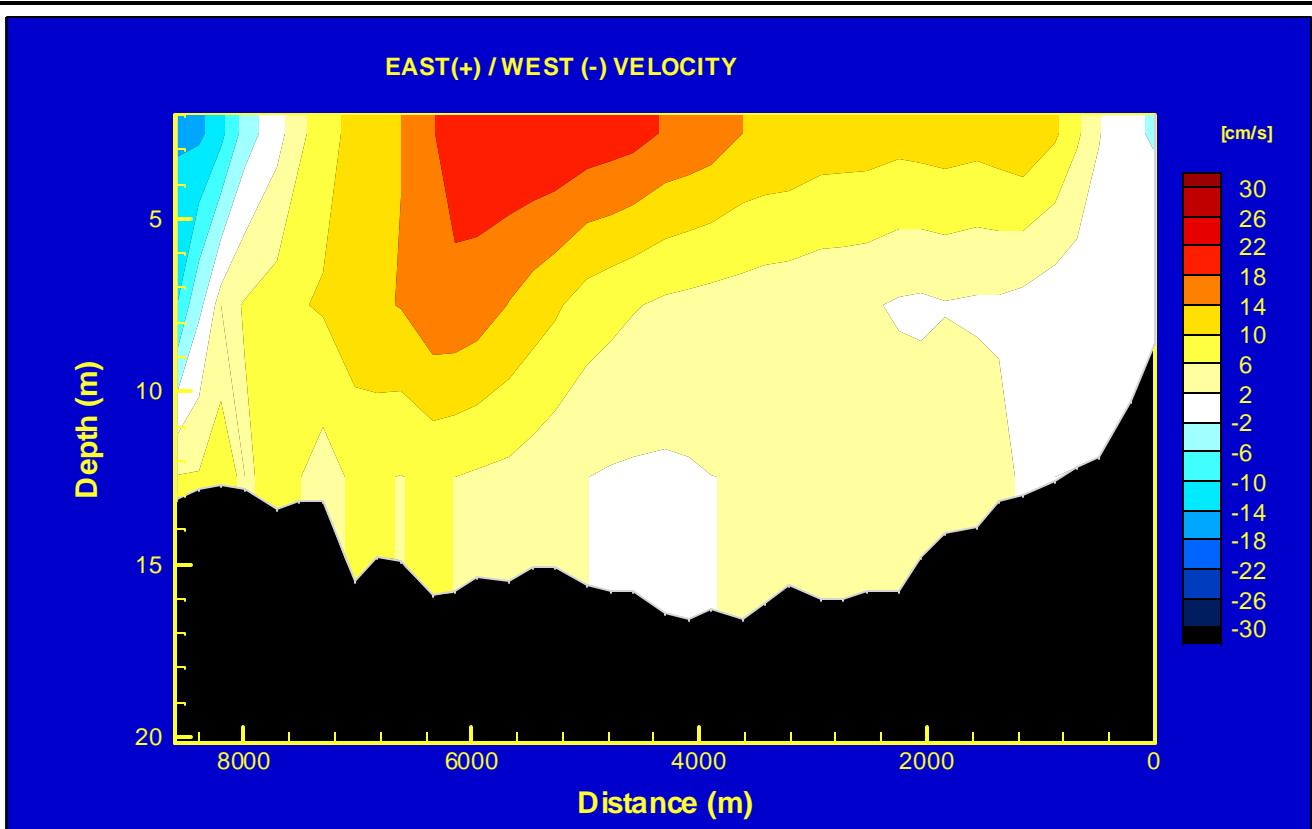


HAY & COMPANY CONSULTANTS INC.

ENVIRONMENT CANADA
SEMIAHMOO BAY
CIRCULATION STUDY

MODELED VELOCITY TRANSECT
JULY 24, 2002 13:00 HR.

FIG.
D-10

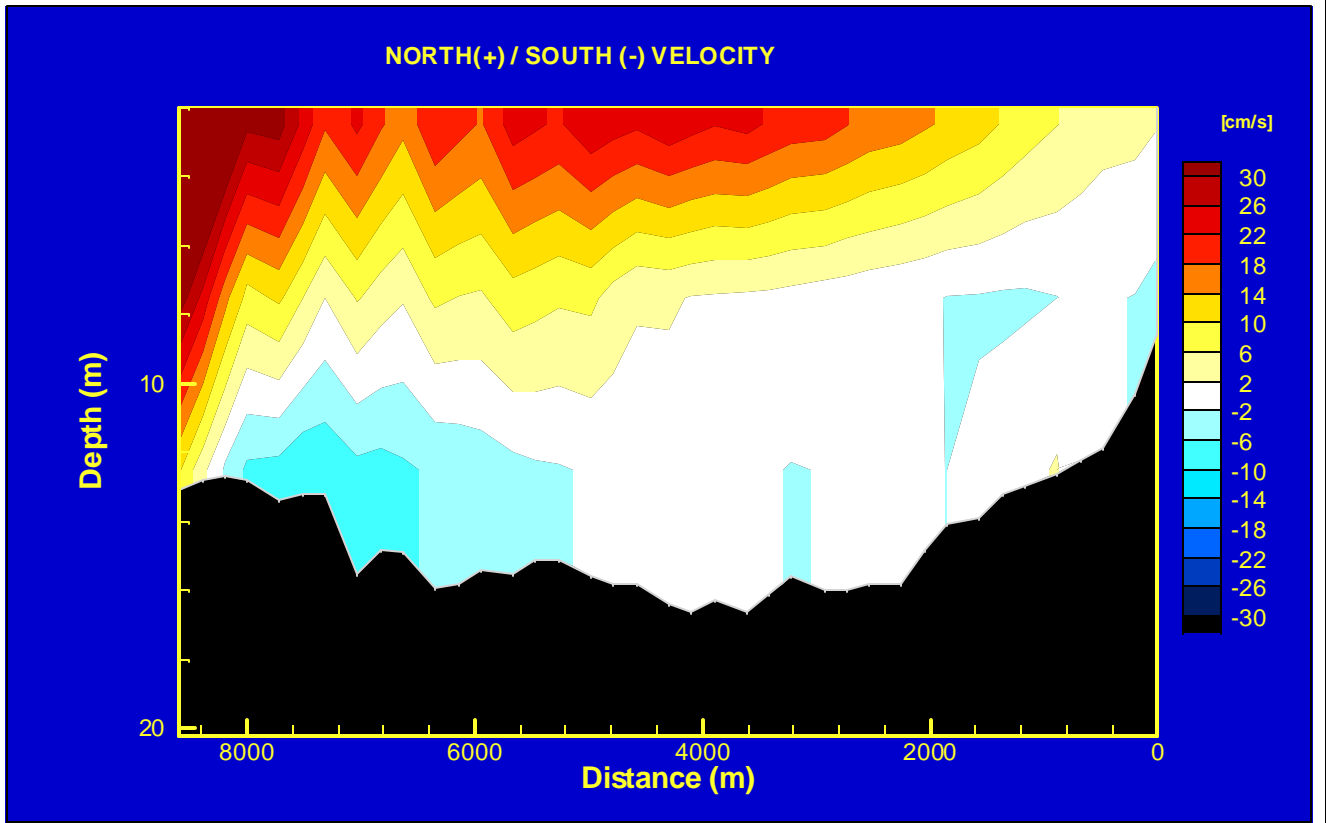
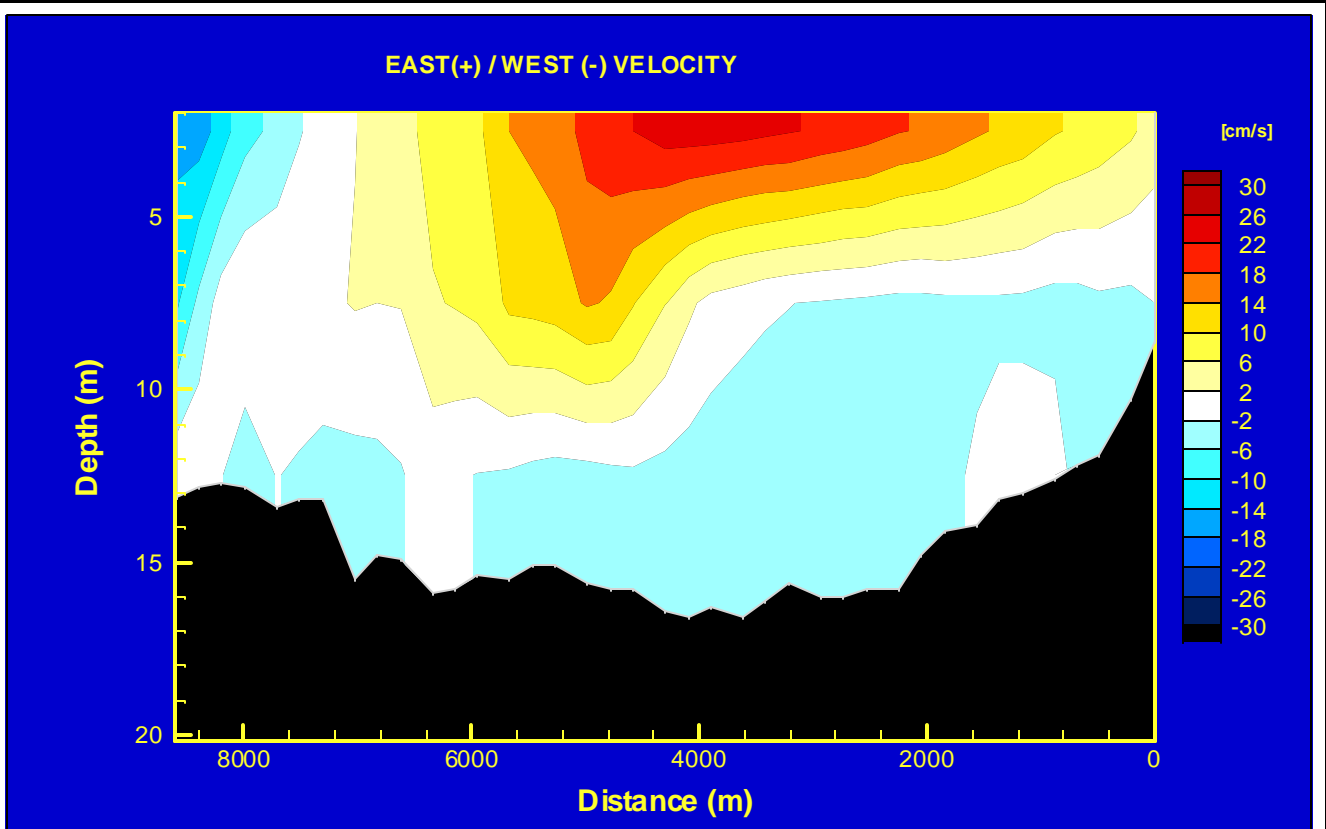


 HAY & COMPANY CONSULTANTS INC.

ENVIRONMENT CANADA
SEMIAHMOO BAY
CIRCULATION STUDY

MODELED VELOCITY TRANSECT
JULY 24, 2002 15:00 HR.

FIG.
D-11

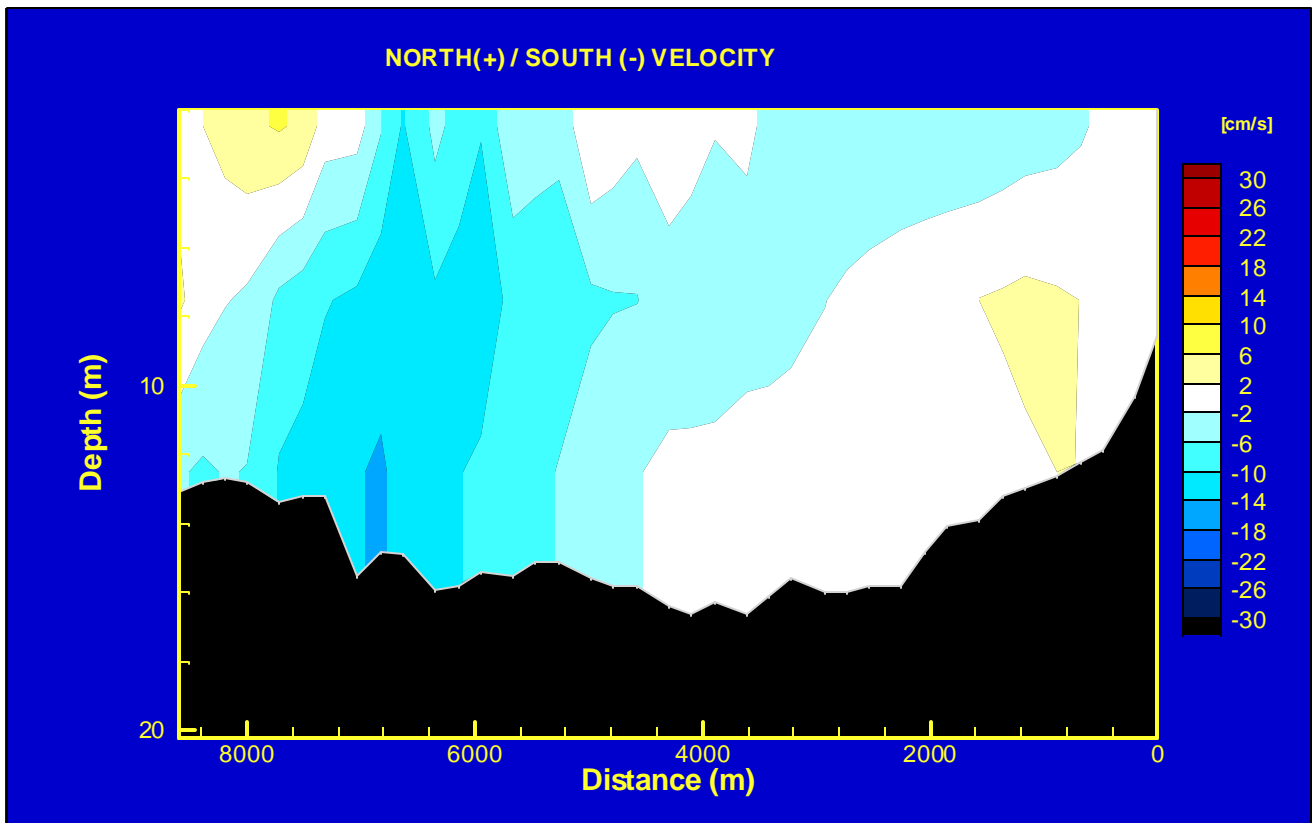
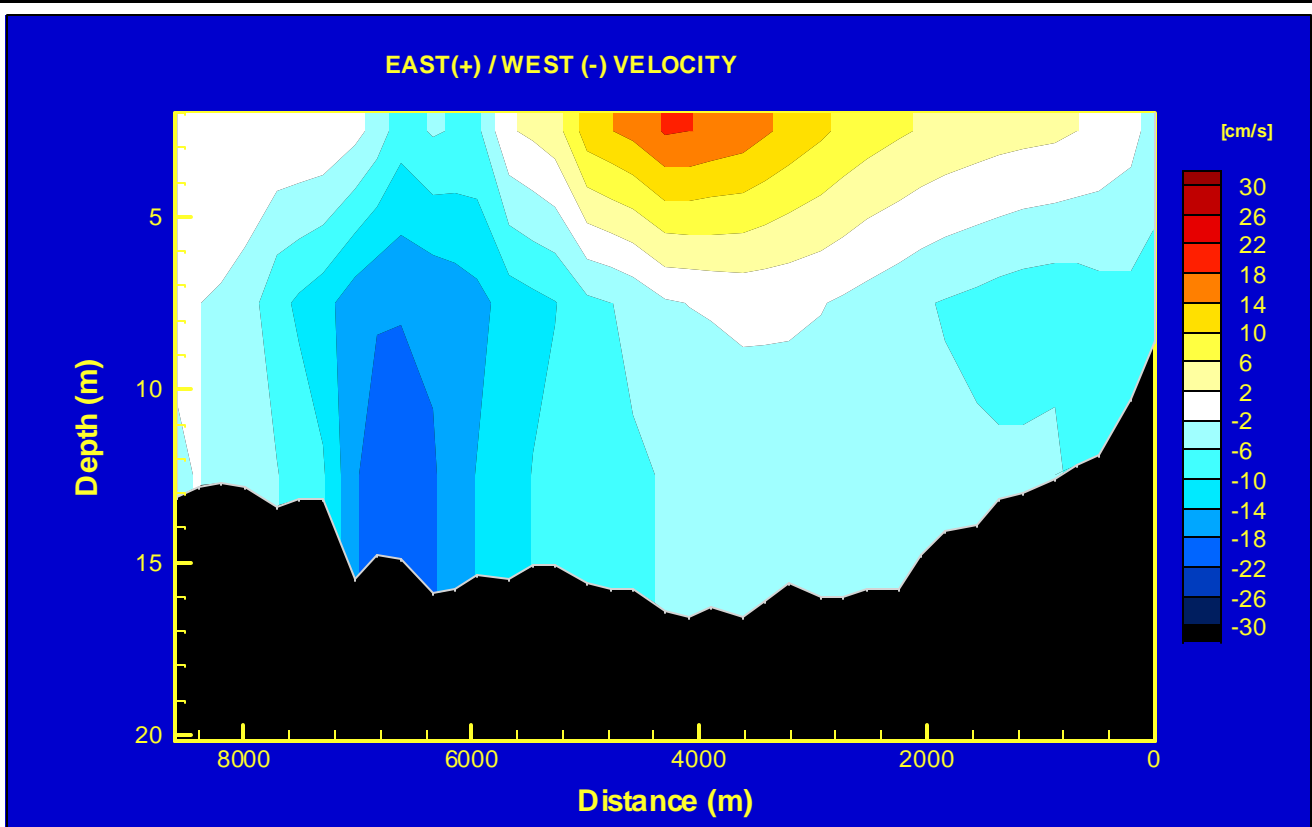


HAYCO HAY & COMPANY CONSULTANTS INC.

ENVIRONMENT CANADA
SEMIAHMOO BAY
CIRCULATION STUDY

MODELED VELOCITY TRANSECT
JULY 24, 2002 17:00 HR.

FIG.
D-12

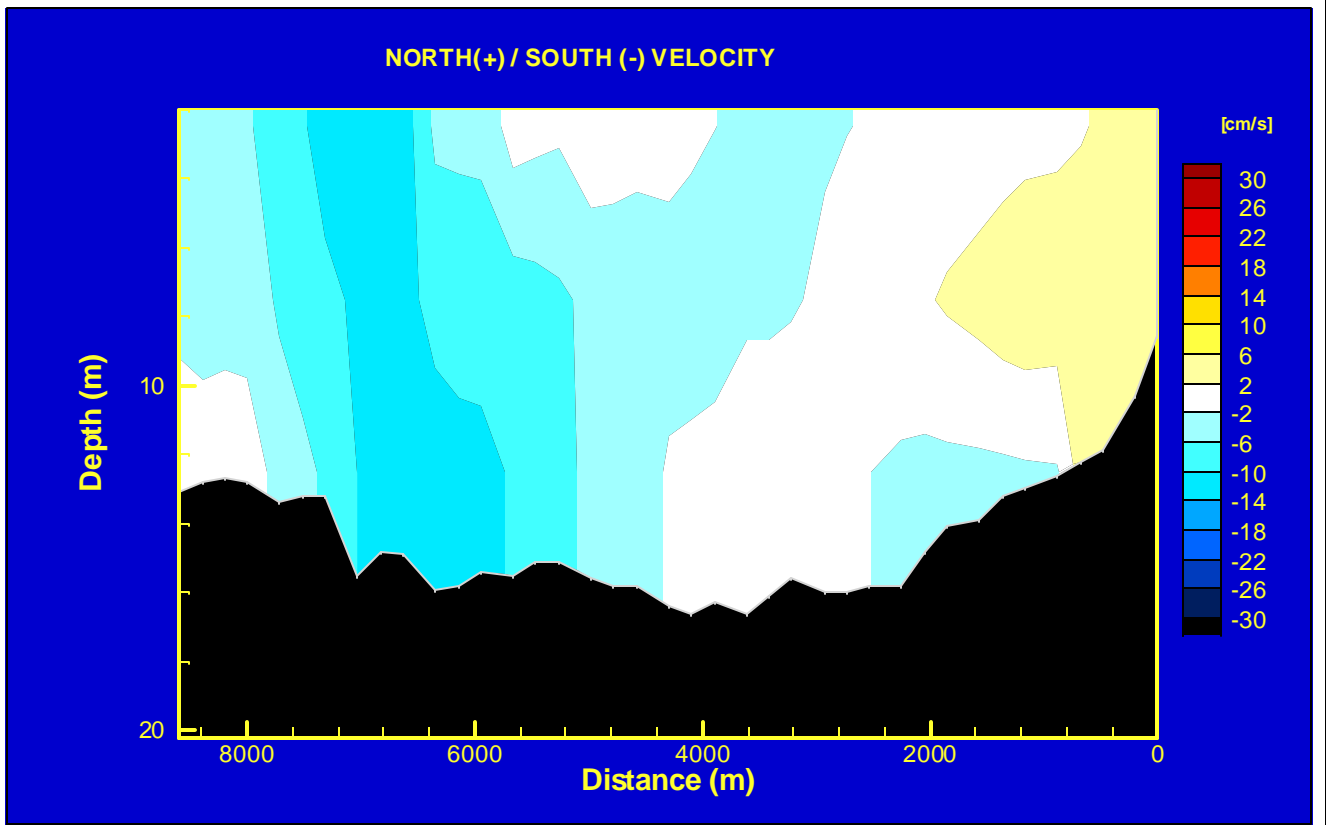
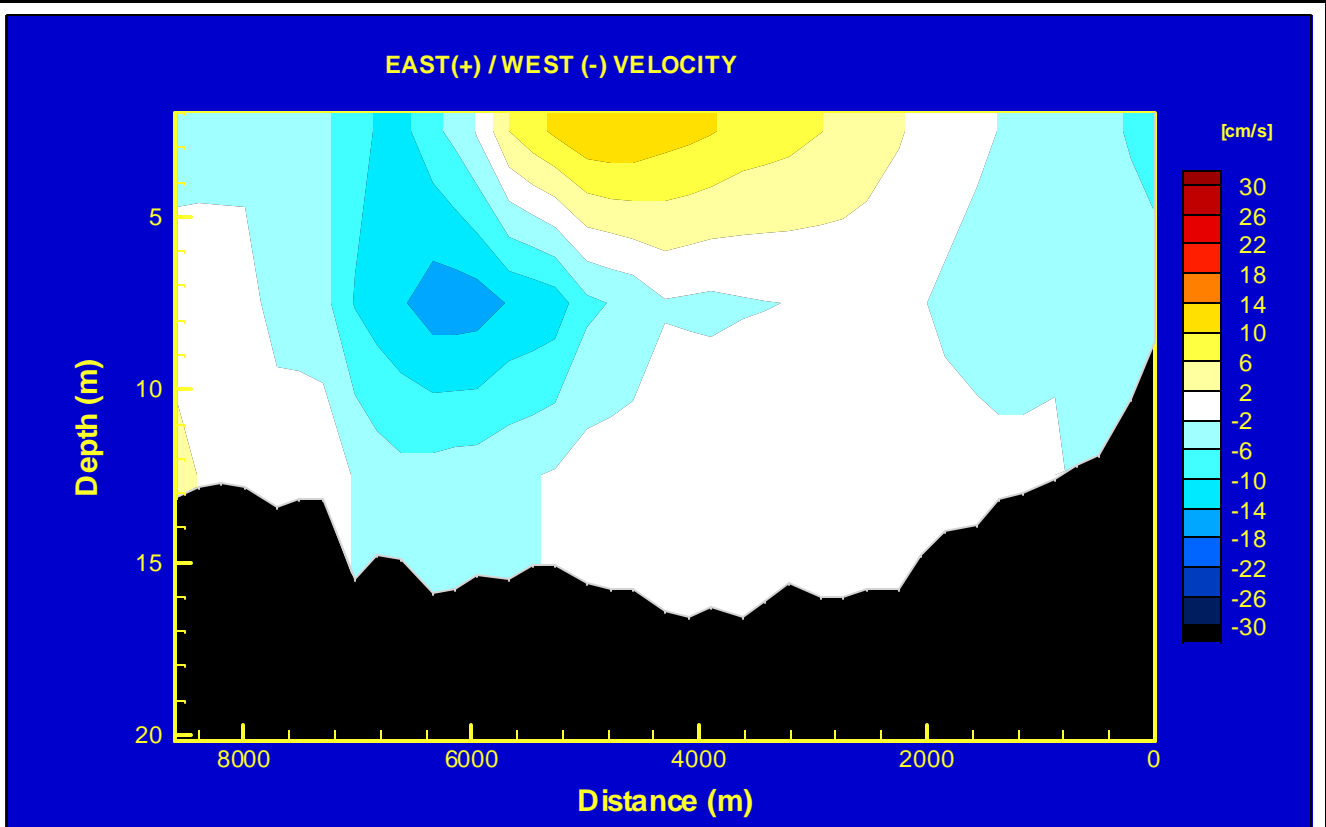


HAYCO HAY & COMPANY CONSULTANTS INC.

ENVIRONMENT CANADA
**SEMIAHMOO BAY
 CIRCULATION STUDY**

**MODELED VELOCITY TRANSECT
 JULY 24, 2002 21:00 HR.**

**FIG.
 D-13**

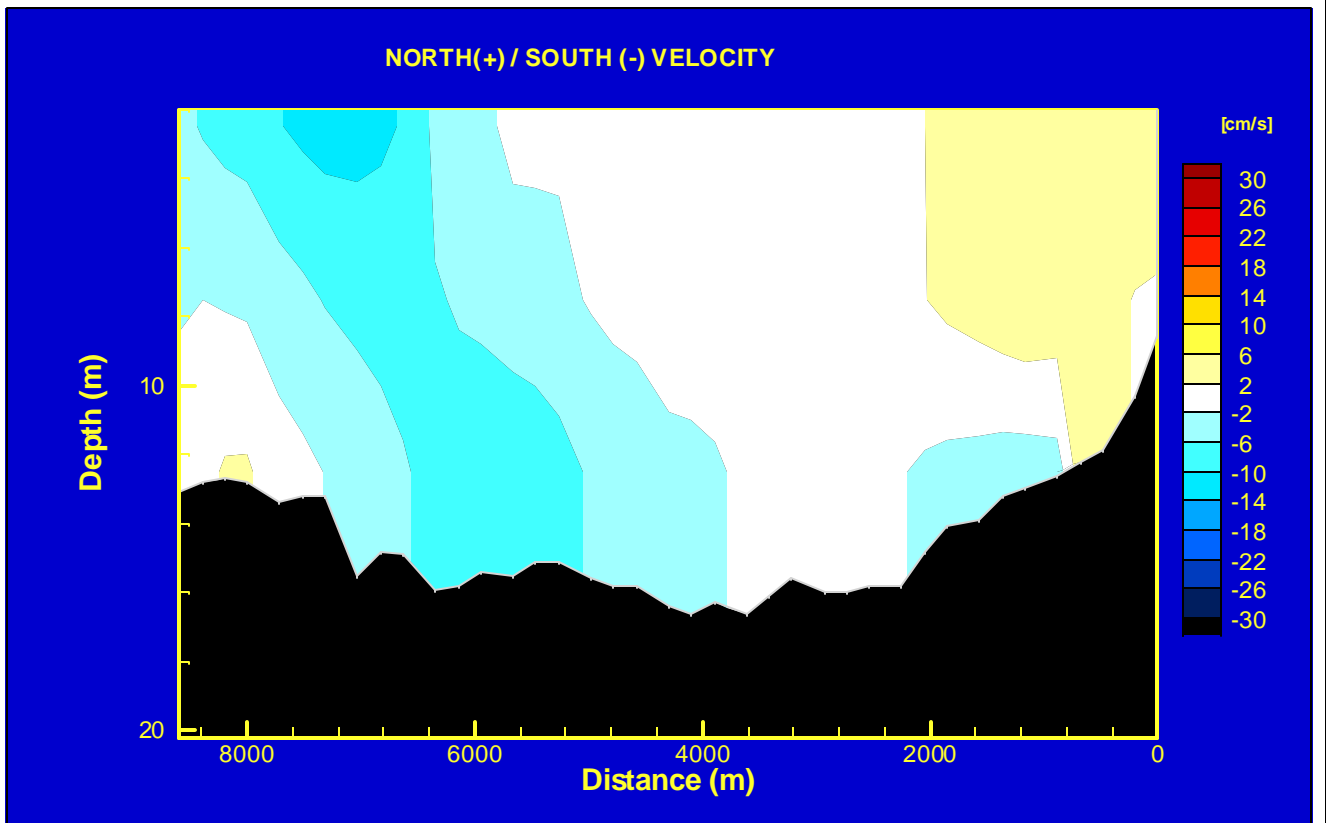
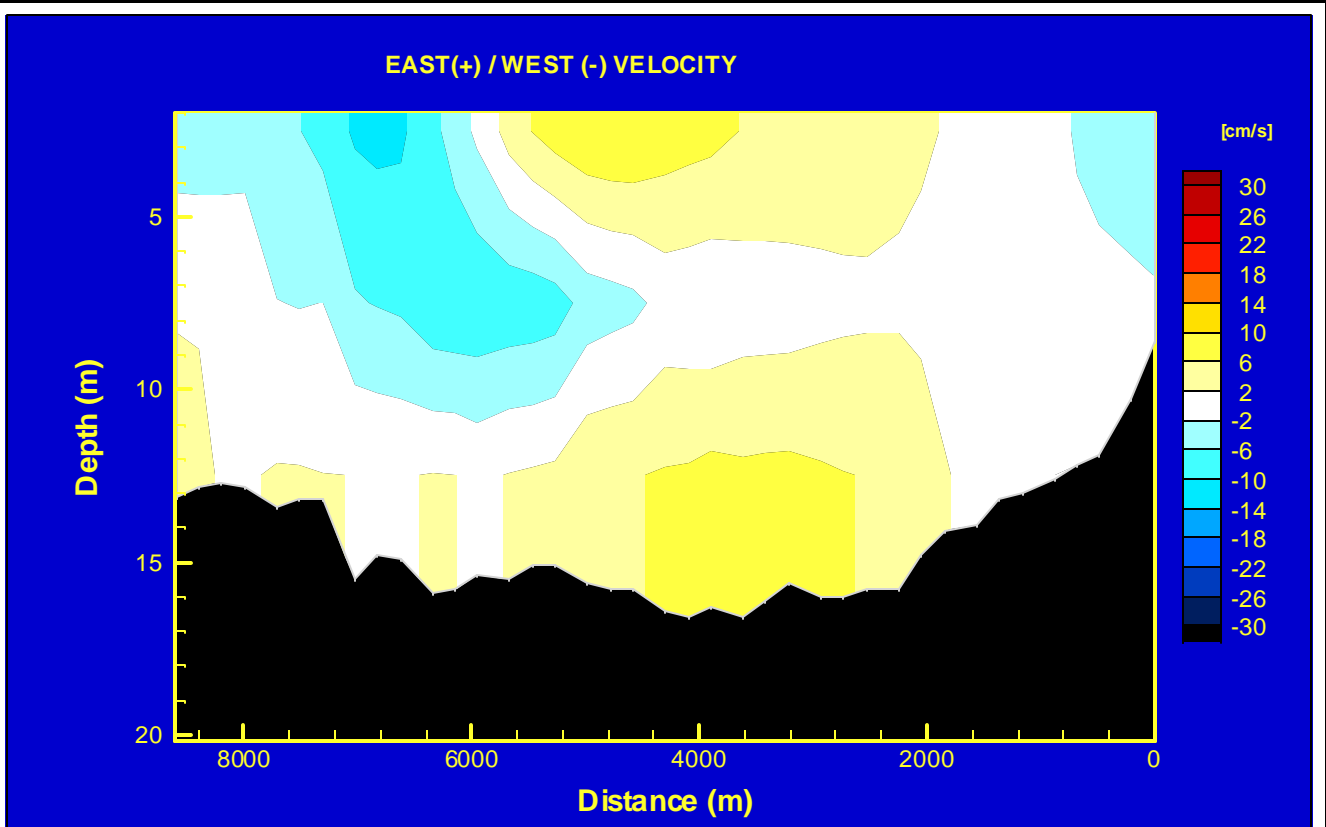


 HAY & COMPANY CONSULTANTS INC.

ENVIRONMENT CANADA
SEMIAHMOO BAY
CIRCULATION STUDY

MODELED VELOCITY TRANSECT
JULY 24, 2002 23:00 HR.

FIG.
D-14

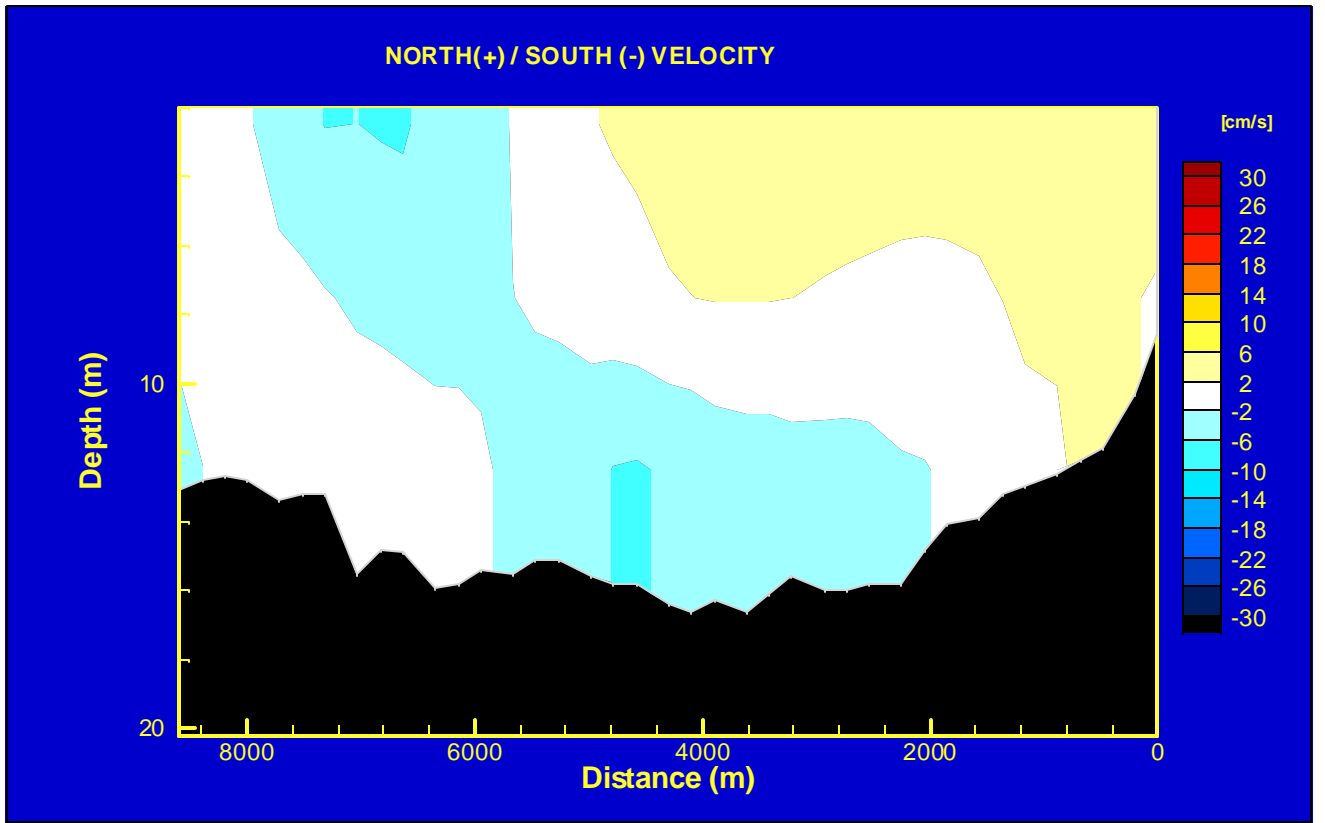
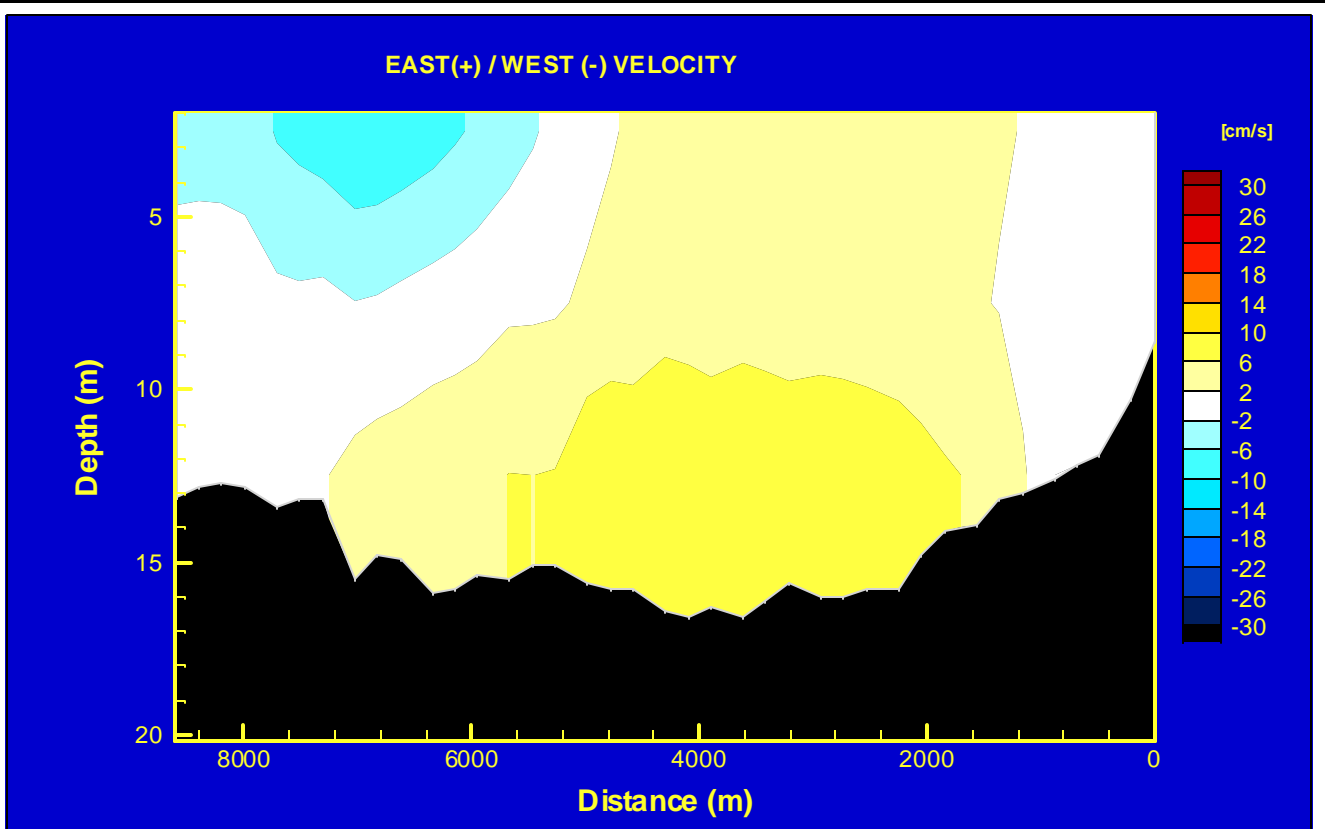


HAYCO
HAY & COMPANY CONSULTANTS INC.

ENVIRONMENT CANADA
**SEMIAHMOO BAY
CIRCULATION STUDY**

**MODELED VELOCITY TRANSECT
JULY 25, 2002 00:00 HR.**

**FIG.
D-15**

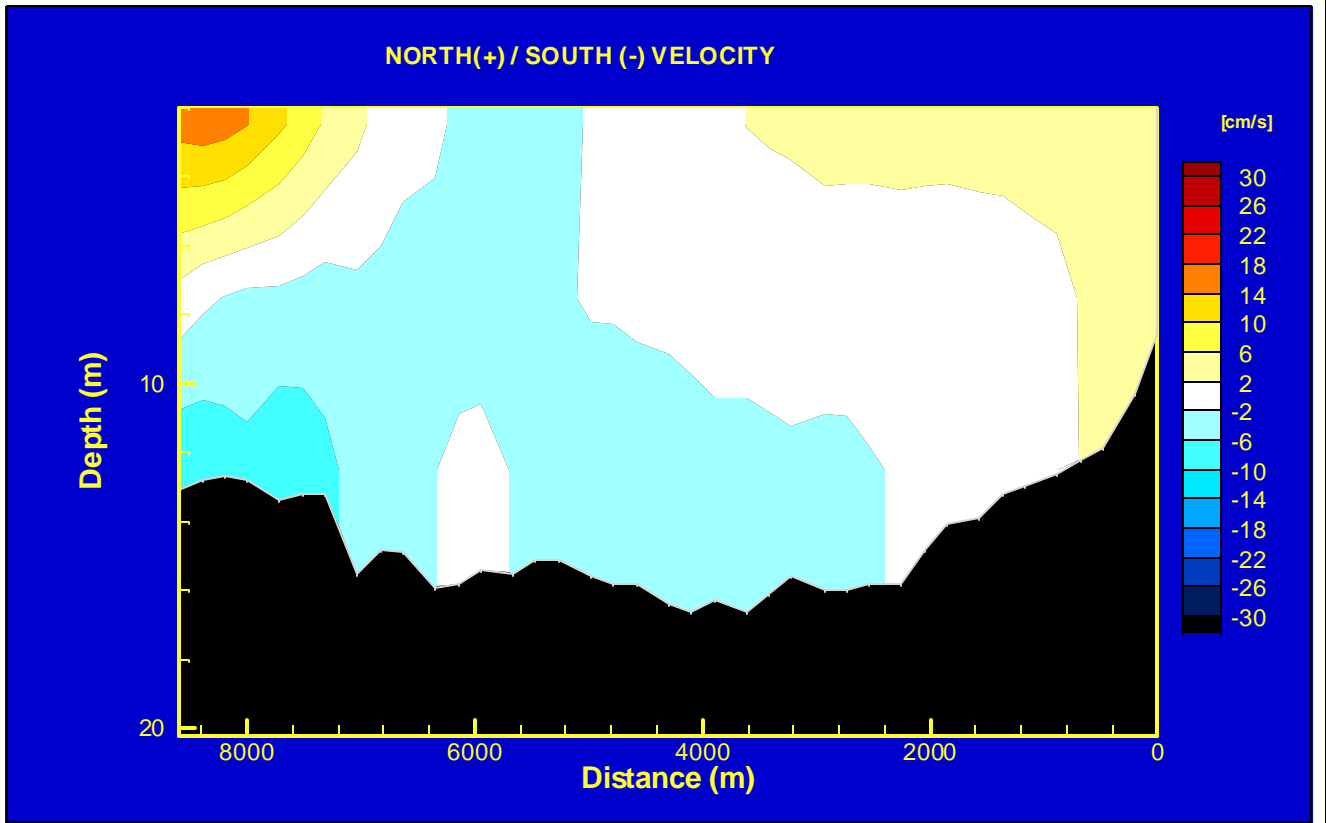
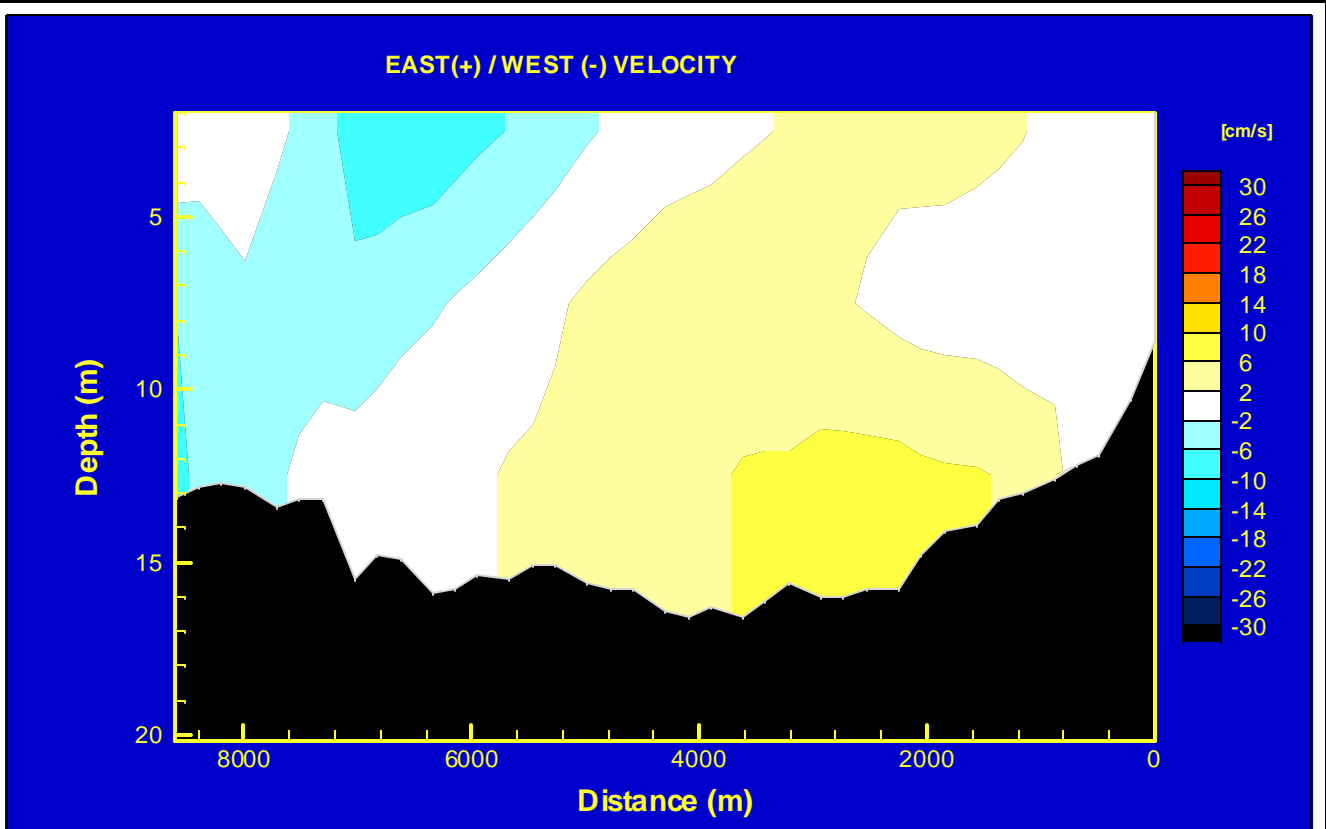


 HAY & COMPANY CONSULTANTS INC.

ENVIRONMENT CANADA
SEMIAHMOO BAY
CIRCULATION STUDY

MODELED VELOCITY TRANSECT
JULY 25, 2002 02:00 HR.

FIG.
D-16

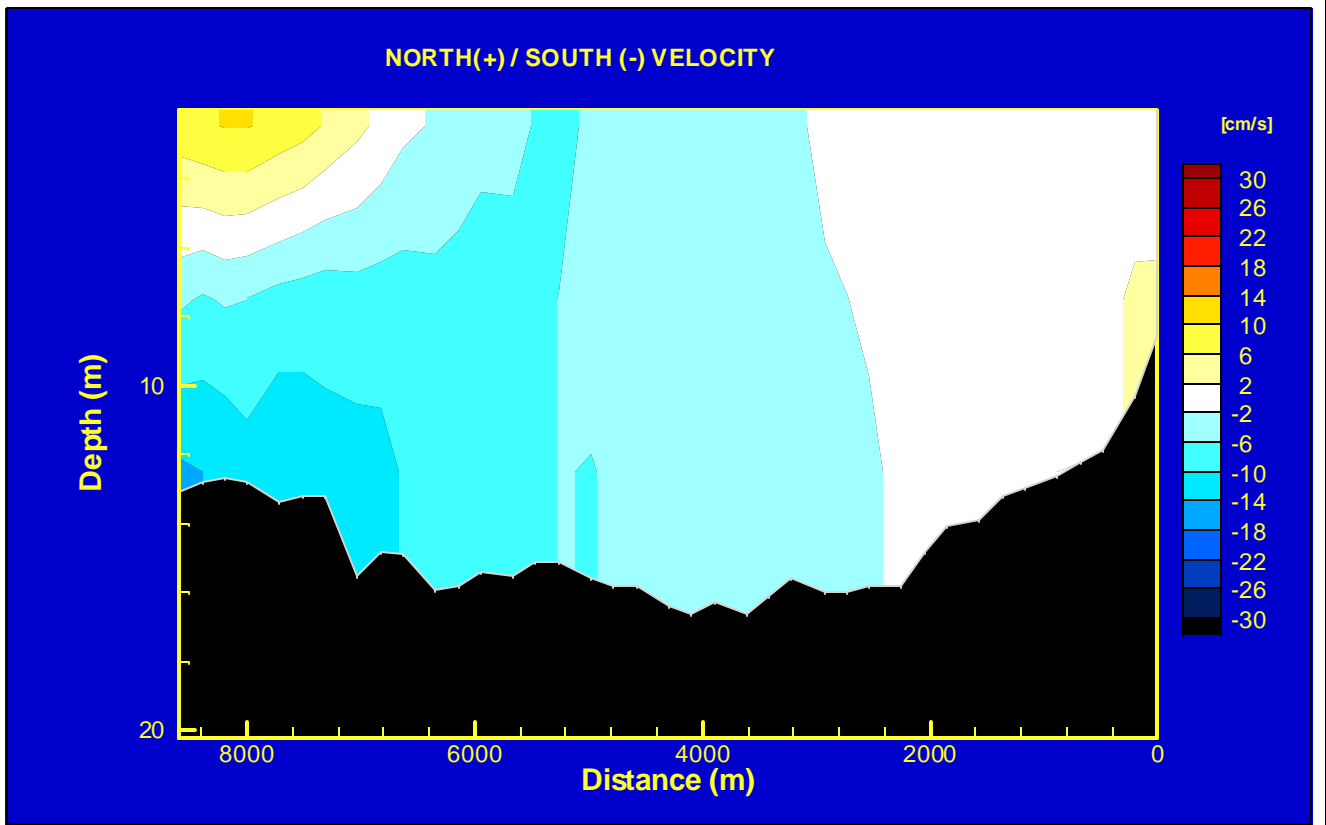
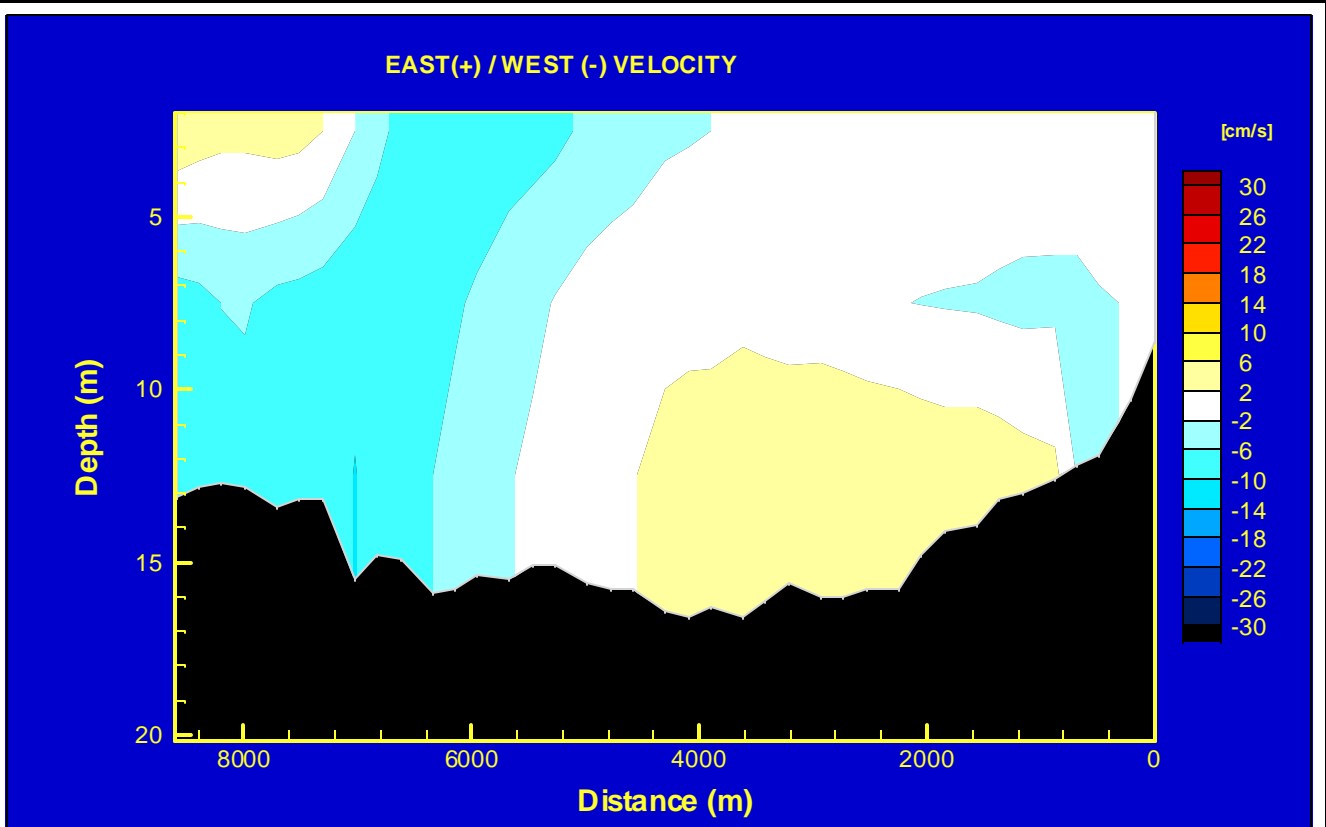


HAY & COMPANY CONSULTANTS INC.

ENVIRONMENT CANADA
SEMIAHMOO BAY
CIRCULATION STUDY

MODELED VELOCITY TRANSECT
JULY 25, 2002 04:00 HR.

FIG.
D-17

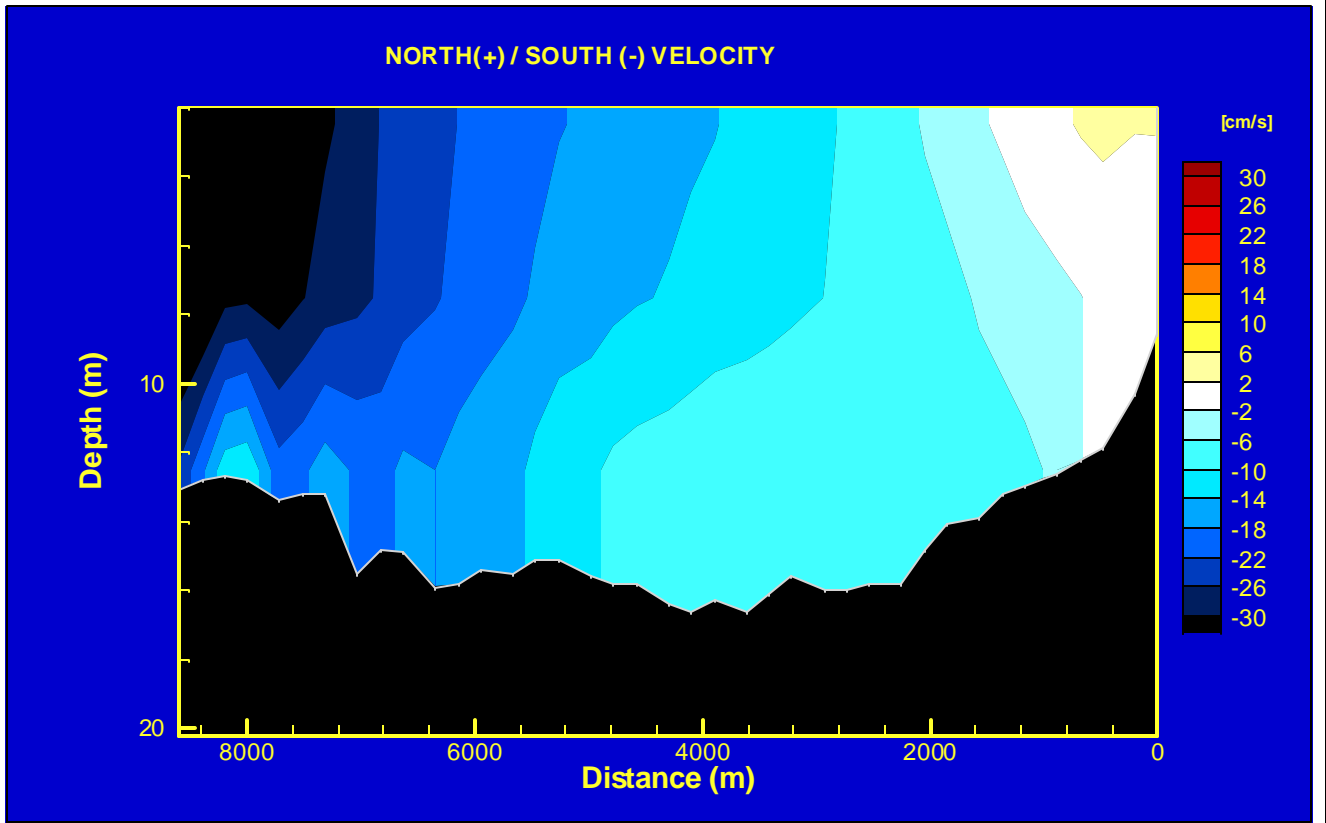
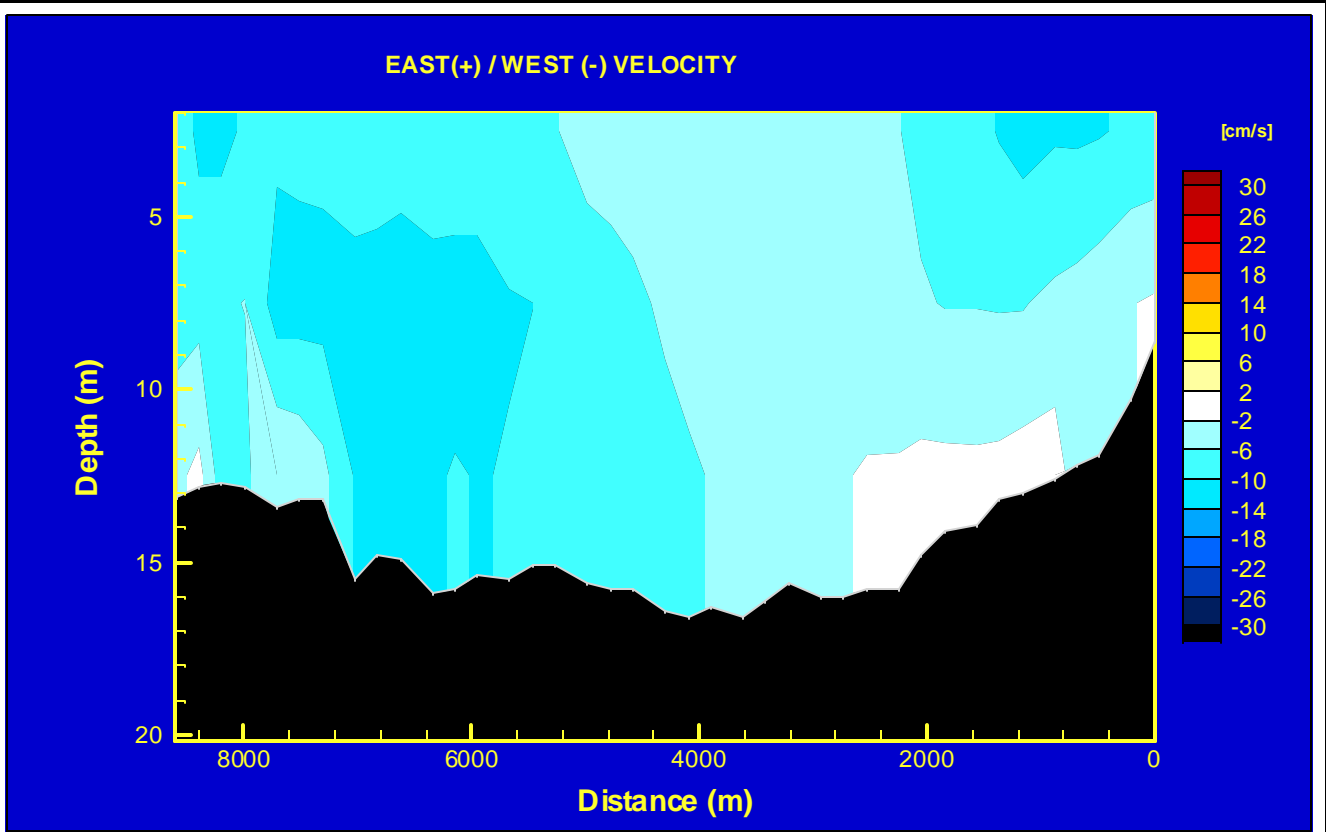


HAYCO
HAY & COMPANY CONSULTANTS INC.

ENVIRONMENT CANADA
**SEMIAHMOO BAY
CIRCULATION STUDY**

**MODELED VELOCITY TRANSECT
JULY 25, 2002 05:00 HR.**

**FIG.
D-18**



HAY & COMPANY CONSULTANTS INC.

ENVIRONMENT CANADA
SEMIAHMOO BAY
CIRCULATION STUDY

MODELED VELOCITY TRANSECT
JULY 25, 2002 09:00 HR.

FIG.
D-19