



South Coast Creel Survey Bulletin #5 – August 2009

Overview:

This bulletin provides a monthly update on estimates of recreational fishing effort and fin fish catch in the marine waters of southern British Columbia (Pacific Fisheries Management Areas 11 through 29 and 121 to 127). These estimates are generated from data collected by the DFO's South Coast Creel Survey in four geographic regions: Johnstone Strait, Strait of Georgia, west coast of Vancouver Island (WCVI) and Quatsino Sound. An overview of the objectives of the survey, the study area and methods used to collect data and generate these estimates are reviewed in the first bulletin of 2009, available on the DFO *ExtraNet*:

http://www-ops2.pac.dfo-mpo.gc.ca/xnet/content/salmon/sc_creelbulletins

*The estimates presented in this bulletin are based on **in-season data** and should be interpreted as **preliminary** and **subject to revision** as the data are finalized. Coho mark rates will be determined post-season.*

Recreational Fishery Links:

It is your responsibility to know the current fishing regulations prior to fishing. A listing of recreational fishing regulations can be viewed at the Fisheries and Oceans Canada Pacific Region Recreational Fishery webpage:

<http://www.pac.dfo-mpo.gc.ca/fm-gp/rec/index-eng.htm>

In addition, Fisheries and Oceans fishery notices of inseason regulation updates can be viewed at:

<http://ops.info.pac.dfo.ca/fishman/fnotice/fnotice.htm>

Creel Survey Data:

Johnstone Strait

In August there were 64 interview survey shifts at 5 fishing access sites in Johnstone Strait. A total of 2524 angling parties (boat trips) were interviewed at the conclusion of their fishing trips. Average catch (retained + released) per boat trip across Johnstone Strait in August were (approximately): 1.6 Chinook, 0.1 Lingcod, 0.3 Halibut and 0.3 rockfish.

There were eight aerial over-flights of the study area in August and total effort was about 22% less than the recent 5-year average August effort (Figure 1). August fishing effort estimates are presented in Table 1. A comparison of monthly fishing effort in 2009 and average effort for the period 2004 – 2008 (5-year average) are presented in Figure 1.

Strait of Georgia

In August there were 208 interview survey shifts at 33 fishing access sites in the Strait of Georgia. A total of 1895 angling parties (boat trips) were interviewed at the conclusion of their fishing trips. Average catch (retained + released) per boat trip across the Strait of Georgia in August were (approximately): 1.0 Chinook, 0.2 Lingcod, 0.02 Halibut and 0.08 rockfish.

There were ten aerial over-flights of the study area in August and total effort was about 8% lower than the recent 5-year average August effort (Figure 2). August fishing effort estimates are presented in Table 1. A comparison of monthly fishing effort in 2009



South Coast Creel Survey Bulletin #5 – August 2009

and average effort for the period 2004 – 2008 (5-year average) are presented in Figure 2.

WCVI

There were 10 aerial over-flights of the WCVI area in August and total effort estimate was about 15% lower than the recent 5-year average August effort (Figure 3). Some August effort data from Areas 123 and 124 have not been included and therefore effort is underestimated. August fishing effort estimates are presented in Table 1. A comparison of monthly fishing effort in 2009 and average effort for the period 2004 – 2008 (5-year average) are presented in Figure 3.

Quatsino Sound

In August there were 14 interview survey shifts at 3 fishing access sites in the Quatsino Sound study area. A total of 522 angling parties (boat trips) were interviewed at the conclusion of their fishing trips. Average catch (retained + released) per boat trip across Quatsino Sound in August were (approximately): 1.5 Chinook, 0.4 Lingcod, 0.4 Halibut and 0.6 rockfish.

There were eight aerial over-flights of the study area in August and total effort was about 8% higher than the recent 4-year average August effort (Figure 4). August fishing effort estimates are presented in Table 1. A comparison of monthly fishing effort in 2009 and average effort for the period 2004 – 2008 (5-year average) are presented in Figure 4.

Recreational Catch Estimates:

Johnstone Strait

The August recreational catch estimates for salmon, Halibut, Lingcod and rockfish are presented in Table 1. Monthly recreational catch estimates to date in 2009 are compared to the 5-year monthly average catches in Figure 1.

August retained catches of Chinook and Coho were 14% lower and 2% higher than recent 5-year averages, respectively. Halibut, Lingcod and rockfish catches were 32%, 17% and 42% lower than recent 5-year averages, respectively. Cumulative kept catches to date (from 01 June to 31 August 2009) across the study area were: 10,942 Chinook, 8,982 Coho, 5,009 Halibut, 1,118 Lingcod, and 2,857 rockfish.

Strait of Georgia

The August recreational catch estimates for salmon, Halibut, Lingcod and rockfish are presented in Table 1. Monthly recreational catch estimates to date in 2009 are compared to the 5-year monthly average catches in Figure 2.

August retained catches of Chinook and Coho were 6% lower and 50% higher than recent 5-year averages, respectively. Halibut, Lingcod and rockfish catches were 85% higher, 27% lower and 59% lower than recent 5-year averages, respectively. Cumulative kept catches to date (from 01 May to 31 August 2009) across the study area were: 32,154 Chinook, 5,855 Coho, 3,257 Halibut, 3,043 Lingcod, and 6,305 rockfish.



South Coast Creel Survey Bulletin #5 – August 2009

WCVI

The August recreational catch estimates for Chinook, Coho, and Halibut are presented in Table 1. Some August catch data from Areas 123 and 124 have not been included therefore catches are underestimated. Monthly recreational catch estimates to date in 2009 are compared to the 5-year monthly average catches in Figure 3.

Retained catches of Chinook, Coho and Halibut across the WCVI area in August were 27% lower, 90% higher and 39% lower than recent 5-year averages, respectively. Lingcod and rockfish catches are estimated post-season only. Cumulative kept catches to date (01 June to 31 August 2009) across the study area were: 90,397 Chinook, 66,770 Coho, 20,536 Halibut, and 52,865 Sockeye.

Quatsino Sound

The August recreational catch estimates for salmon, Halibut, Lingcod and rockfish are presented in Table 1. Monthly recreational catch estimates to date in 2009 are compared to the 5-year monthly average catches in Figure 4.

August retained catches of Chinook and Coho were 14% lower and 88% higher than recent 5-year averages, respectively. Halibut, Lingcod and rockfish catches were 54% lower, 35% lower and 18% lower than recent 4-year averages, respectively. Cumulative kept catches to date (from 01 June to 31 August 2009) across the study area were: 5,964 Chinook, 13,879 Coho, 3,066 Halibut, 3,446 Lingcod, and 4,965 rockfish.

Note:

Budget constraints will limit creel surveys in October this year, and the planned October South Coast Creel Bulletin (Bulletin #7) will no longer be produced.

Contacts:

For additional information on the South Coast Creel Survey Programs, please contact:

Johnstone Strait and Quatsino Sound Surveys

Pieter Van Will

Program Head, Johnstone Strait Salmon Stock Assessment
250-949-9273

Strait of Georgia Survey

Steve Baillie

Program Head, Strait of Georgia Salmon Stock Assessment
250-756-7227

West coast Vancouver Island Survey

Diana Dobson

Program Head, WCVI Salmon Stock Assessment
250-756-7186



South Coast Creel Survey Bulletin #5 – August 2009

Table 1a Preliminary recreational kept catch estimates in the Johnstone Strait (JS), Strait of Georgia (SoG), west coast of Vancouver Island (WCVI) and Quatsino Sound (QS) creel areas, Aug. 1-31, 2009.

| TYPE | GMA | Area | Boat Trips | Chinook | Chum | Coho | Pink | Sockeye | Halibut | Lingcod | Rockfish ¹ |
|-------------------------------|--------------------|-----------|--------------|--------------|-----------|--------------|--------------|-------------|--------------|-------------|-----------------------|
| Kept | JS | 11 | 476 | 891 | 6 | 546 | 60 | | 731 | 291 | 447 |
| | | 12 | 7593 | 4428 | 41 | 1620 | 11415 | | 1241 | 149 | 576 |
| Kept | SG | 13 | 7059 | 4377 | | 1016 | 17234 | | | 62 | 204 |
| | | 14 | 2826 | 861 | | 13 | 1323 | | | 100 | 49 |
| | | 15 | 385 | 42 | | | | | | 6 | |
| | | 16 | 912 | 66 | | | | | | 41 | 318 |
| | | 17 | 3267 | 33 | | | 9 | | | 292 | 513 |
| | | 18 | 683 | 60 | | | 634 | | 29 | 37 | 29 |
| | | 19 | 2494 | 589 | | 56 | 1923 | | 506 | 71 | 176 |
| | | 20(GS) | 11443 | 6804 | 24 | 2130 | 31606 | | 93 | 221 | 298 |
| | | 28 | 958 | 26 | | 96 | 255 | | | | 23 |
| | | 29 | 1707 | 339 | | 10 | 153 | | | | |
| Kept | WCVI | 20 (WCVI) | 4662 | 6112 | | 2005 | | | 391 | | |
| | | 21 | 512 | | | 236 | | | 338 | | |
| | | 22 | | | | | | | | | |
| | | 23 | 14277 | 15239 | | 5035 | | 4179 | 334 | | |
| | | 24 | 609 | 56 | | 1579 | | | 8 | | |
| | | 25 | 6380 | 3876 | | 8642 | | | 249 | | |
| | | 26 | | | | | | | | | |
| | | 121 | 910 | | | 3730 | | | 3980 | | |
| | | 123 | 3123 | 11640 | | 10677 | | | 2882 | | |
| | | 124 | 1483 | 4247 | | 4012 | | | 1171 | | |
| 125 | 1841 | 3142 | | 1989 | | | 1022 | | | | |
| 126 | | | | | | | | | | | |
| Kept | QS | 27 | 2376 | 950 | | 7826 | 136 | | 168 | 210 | 281 |
| | | 127 | 1209 | 1932 | | 522 | 185 | | 1194 | 1108 | 1809 |
| Kept Total | JS | | 8069 | 5319 | 47 | 2166 | 11475 | | 1972 | 440 | 1023 |
| Kept Total | SG | | 31733 | 13198 | 24 | 3320 | 53138 | | 628 | 831 | 1610 |
| Kept Total ² | WCVI | | 33797 | 44312 | | 37905 | | 4179 | 10375 | | |
| Kept Total | QS | | 3585 | 2882 | | 8348 | 321 | | 1362 | 1318 | 2090 |
| Kept Total² | South Coast | | 77184 | 65711 | 71 | 51739 | 64934 | 4179 | 14337 | 2589 | 4723 |

¹ includes Yelloweye, Quillback, Copper, China, Tiger

² including only those areas surveyed during this time period



South Coast Creel Survey Bulletin #5 – August 2009

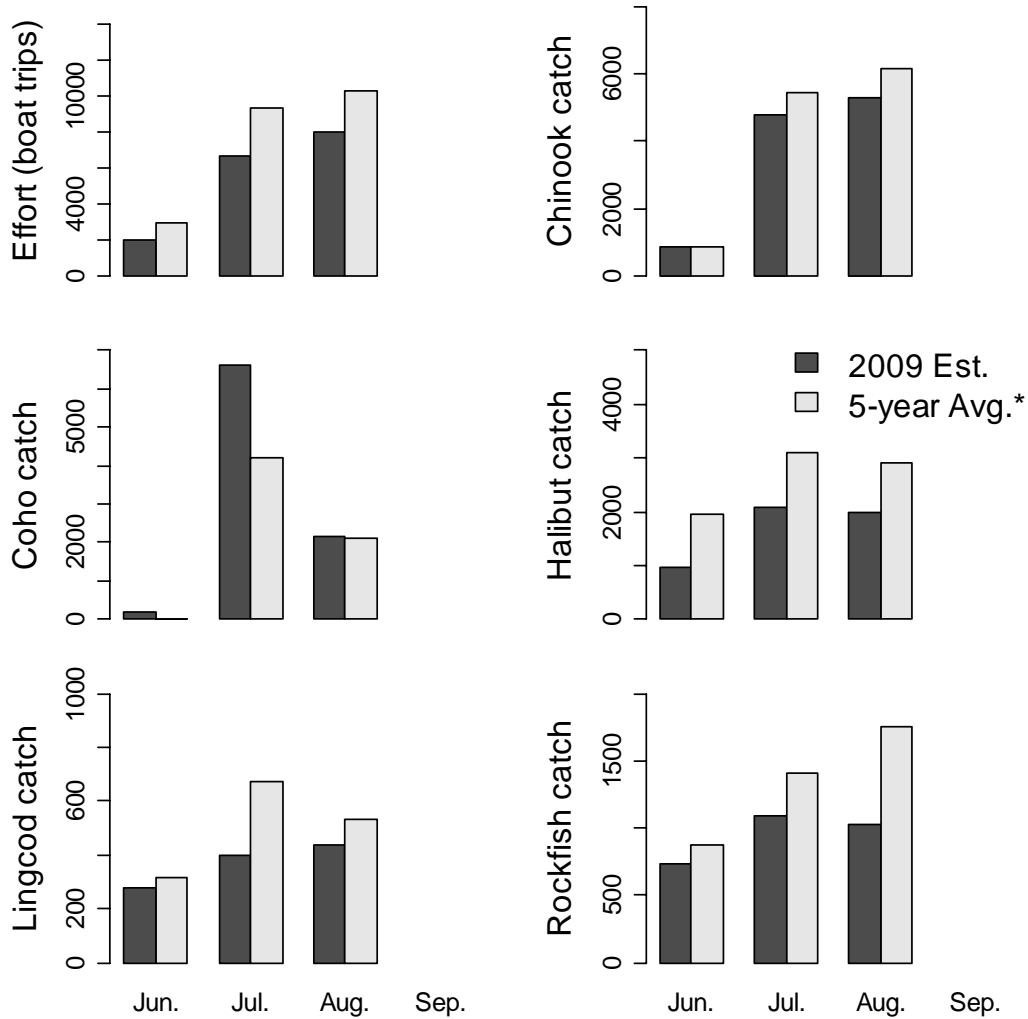
Table 1b Preliminary recreational released catch estimates in the Johnstone Strait (JS), Strait of Georgia (SoG), west coast of Vancouver Island (WCVI) and Quatsino Sound (QS) creel areas, Aug. 1-31, 2009.

| TYPE | GMA | Area | Boat Trips | Chinook | Chum | Coho | Pink | Sockeye | Halibut | Lingcod | Rockfish ¹ |
|----------------|------|--------|--|---------|------|-------|-------|---------|---------|---------|-----------------------|
| Released | JS | 11 | 476 | 273 | | 341 | 62 | 3 | 70 | 58 | 104 |
| | | 12 | 7593 | 7077 | 45 | 13393 | 8033 | 228 | 205 | 361 | 895 |
| Released | SG | 13 | 7059 | 2055 | | 5173 | 6404 | 407 | | 147 | |
| | | 14 | 2826 | 813 | | 464 | 100 | | | 270 | |
| | | 15 | 385 | 82 | | | | | | 141 | 14 |
| | | 16 | 912 | 81 | | | | | | 811 | 333 |
| | | 17 | 3267 | 1336 | | 225 | 30 | | | 1593 | 210 |
| | | 18 | 683 | 94 | | 35 | 100 | | | 128 | 45 |
| | | 19 | 2494 | 934 | | 318 | 546 | 27 | | 554 | 64 |
| | | 20(GS) | 11443 | 11531 | | 8218 | 10040 | 491 | | 966 | 145 |
| | | 28 | 958 | 199 | | 138 | 604 | 5 | | 17 | |
| | | 29 | 1707 | 1192 | | 192 | 88 | 160 | | 32 | |
| Released | WCVI | ALL | <i>Released numbers estimated post-season only</i> | | | | | | | | |
| Released | QS | 27 | 2376 | 1782 | | 5775 | 102 | | 7 | 158 | 64 |
| | | 127 | 1209 | 850 | | 3803 | 209 | | 171 | 109 | 81 |
| Released Total | JS | | 8069 | 7350 | 45 | 13734 | 8095 | 231 | 275 | 419 | 999 |
| Released Total | SG | | 31733 | 18318 | | 14764 | 17912 | 1091 | | 4660 | 810 |
| Released Total | QS | | 3585 | 2632 | | 9578 | 311 | | 178 | 267 | 145 |

¹ includes Yelloweye, Quillback, Copper, China, Tiger



South Coast Creel Survey Bulletin #5 – August 2009

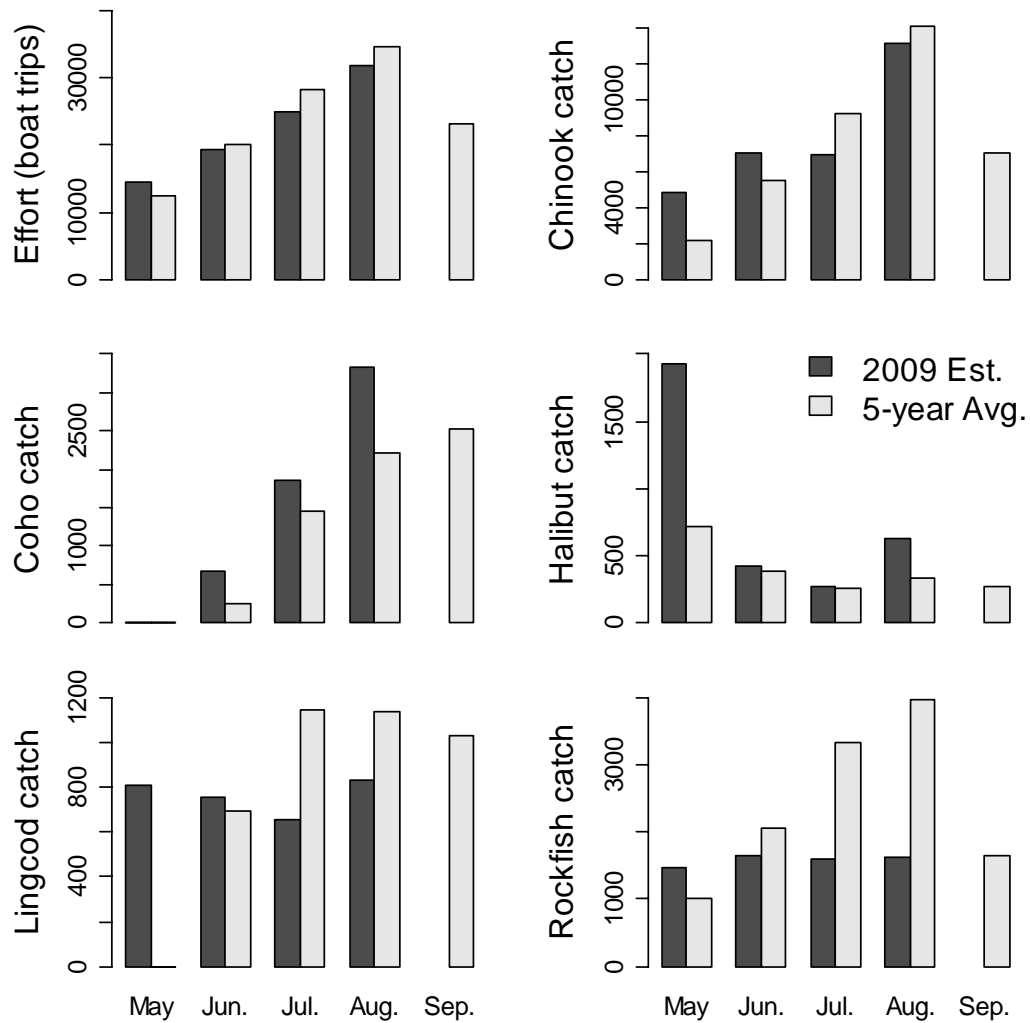


Monthly estimates - Johnstone Strait

Figure 1 Monthly estimates of effort and kept catch by species in 2009 (dark bars) and the average over the last five years (2004 to 2008 average, light bars) for the Johnstone Strait Creel Survey.



South Coast Creel Survey Bulletin #5 – August 2009

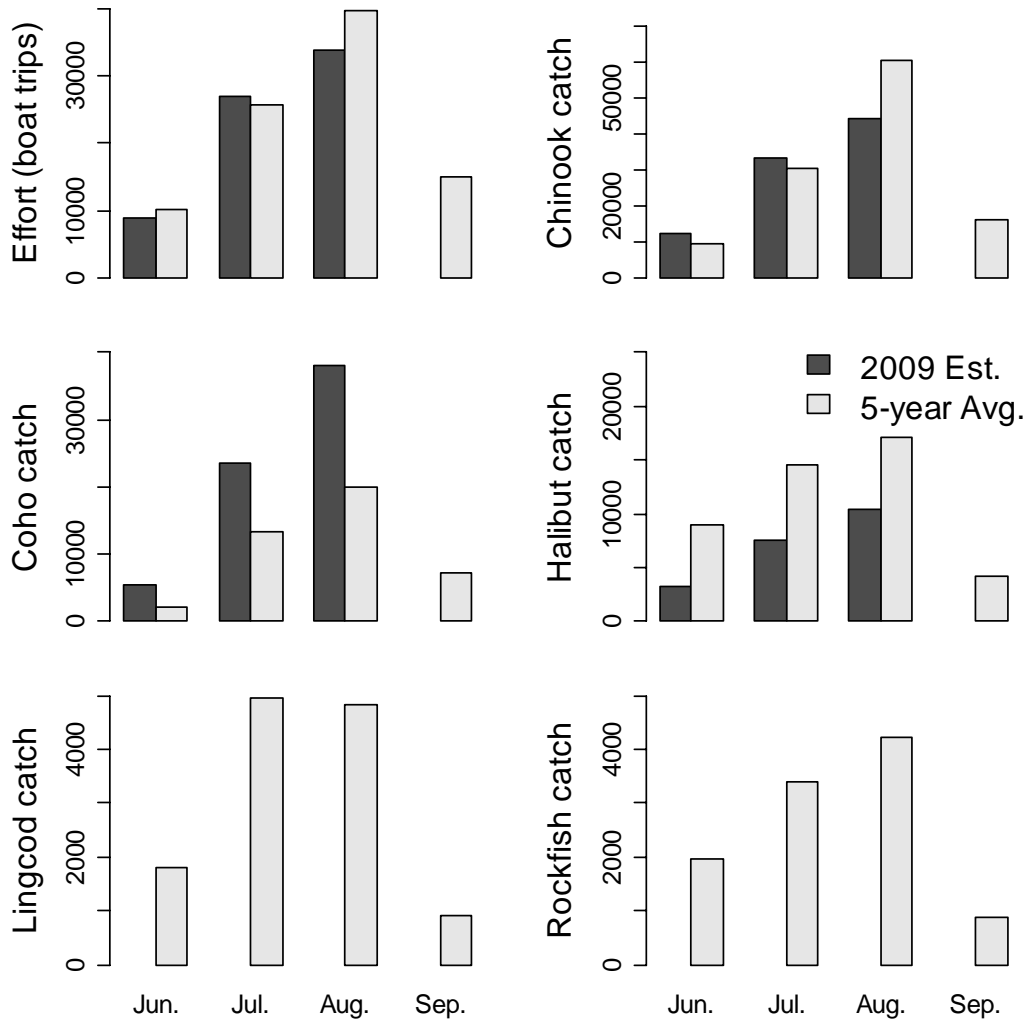


Monthly estimates - Strait of Georgia

Figure 2 Monthly estimates of effort and kept catch by species in 2009 (dark bars) and the average over the last five years (2004 to 2008 average, light bars) for the Strait of Georgia Creel Survey.



South Coast Creel Survey Bulletin #5 – August 2009

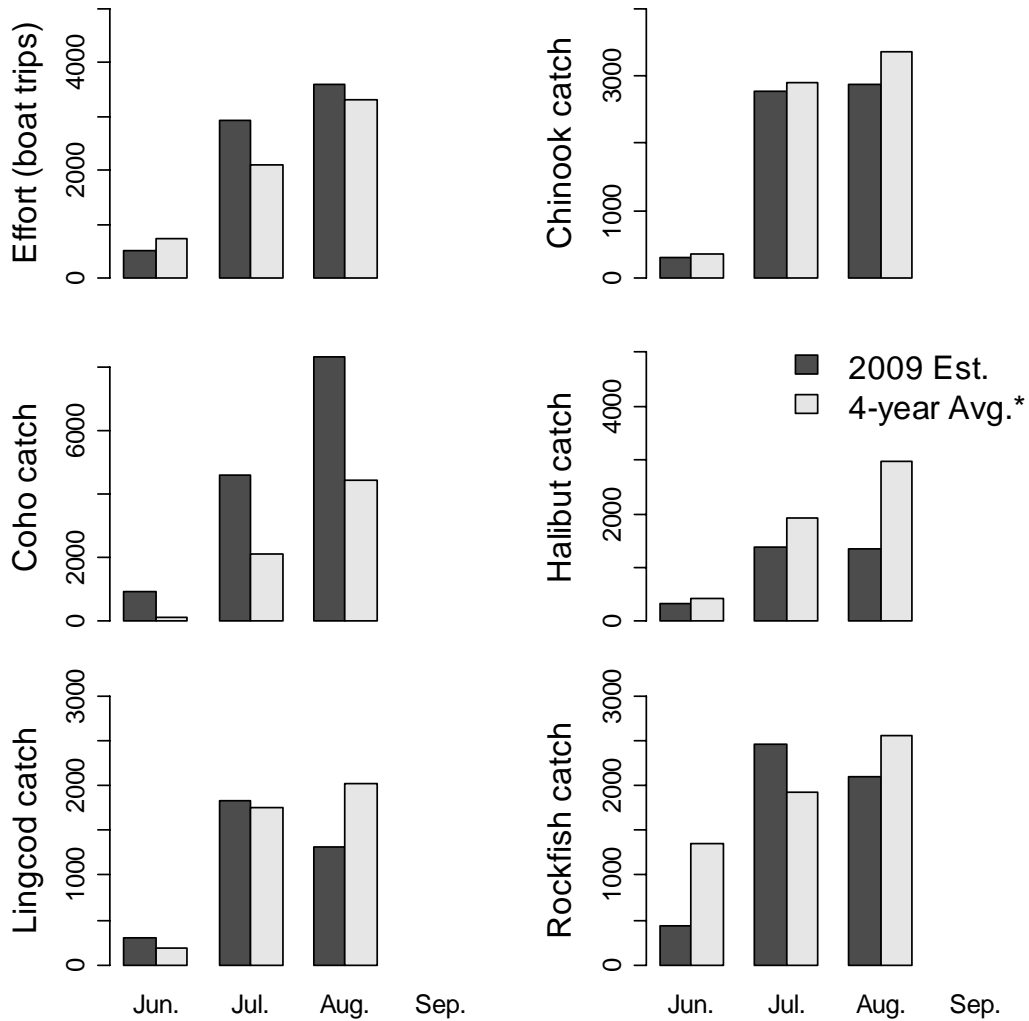


Monthly estimates - WCVI

Figure 3 Monthly estimates of effort and kept catch by species in 2009 (dark bars) and the average over the last five years (2004 to 2008 average, light bars) for the WCVI Creel Survey. Lingcod and rockfish catches are only estimated post-season for the WCVI survey. Some of the August effort and catch data for Areas 123 and 124 have not been included therefore are underestimated.



South Coast Creel Survey Bulletin #5 – August 2009



Monthly estimates - Quatsino Sound

Figure 4 Monthly estimates of effort and kept catch by species in 2009 (dark bars) and the average over the last four years (2005 to 2008 average, light bars) for the Quatsino Sound Creel Survey.