



## South Coast Creel Survey Bulletin #6 – September 2009

### Overview:

This bulletin provides a monthly update on estimates of recreational fishing effort and fin fish catch in the marine waters of southern British Columbia (Pacific Fisheries Management Areas 11 through 29 and 121 to 127). These estimates are generated from data collected by the DFO's South Coast Creel Survey in four geographic regions: Johnstone Strait, Strait of Georgia, west coast of Vancouver Island (WCVI) and Quatsino Sound. An overview of the objectives of the survey, the study area and methods used to collect data and generate these estimates are reviewed in the first bulletin of 2009, available on the DFO *ExtraNet*:

[http://www-ops2.pac.dfo-mpo.gc.ca/xnet/content/salmon/sc\\_creelbulletins](http://www-ops2.pac.dfo-mpo.gc.ca/xnet/content/salmon/sc_creelbulletins)

*The estimates presented in this bulletin are based on **in-season data** and should be interpreted as **preliminary** and **subject to revision** as the data are finalized. Coho mark rates will be determined post-season.*

### Recreational Fishery Links:

It is your responsibility to know the current fishing regulations prior to fishing. A listing of recreational fishing regulations can be viewed at the Fisheries and Oceans Canada Pacific Region Recreational Fishery webpage:

<http://www.pac.dfo-mpo.gc.ca/fm-gp/rec/index-eng.htm>

In addition, Fisheries and Oceans fishery notices of inseason regulation updates can be viewed at:

<http://ops.info.pac.dfo.ca/fishman/fnotice/fnotice.htm>

### Creel Survey Data:

#### Johnstone Strait

The Johnstone Strait creel program finished at the end of August.

#### Strait of Georgia

In September there were 197 interview survey shifts at 33 fishing access sites in the Strait of Georgia. A total of 1117 angling parties (boat trips) were interviewed at the conclusion of their fishing trips. Average catch (retained + released) per boat trip across the Strait of Georgia in August were (approximately): 1.3 Chinook, 0.2 Lingcod, 0.04 Halibut and 0.1 rockfish.

There were eight aerial over-flights of the study area in September and total effort was about 30% lower than the recent 5-year average September effort (Figure 2). September fishing effort estimates are presented in Table 1. A comparison of monthly fishing effort in 2009 and average effort for the period 2004 – 2008 (5-year average) are presented in Figure 2.

#### WCVI

The west coast creel survey finished at the end of August although some areas continued to early September. Please contact Brenda Wright (250-756-7151) for further



**South Coast Creel Survey Bulletin #6 – September 2009**

information.

**Quatsino Sound**

The Quatsino Sound creel program finished at the end of August.

**Recreational Catch Estimates:**

**Johnstone Strait**

The Johnstone Strait creel program finished at the end of August.

**Strait of Georgia**

The September recreational catch estimates for salmon, Halibut, Lingcod and rockfish are presented in Table 1. Monthly recreational catch estimates to date in 2009 are compared to the 5-year monthly average catches in Figure 2.

September retained catches of Chinook and Coho were 35% lower and 82% higher than recent 5-year averages, respectively. Halibut, Lingcod and rockfish catches were 110% higher, 49% lower and 37% lower than recent 5-year averages, respectively. Cumulative kept catches to date (from 01 May to 30 September 2009) across the study area were: 36,754 Chinook, 8,084 Coho, 3,628 Halibut, 3,628 Lingcod, and 7,343 rockfish.

**WCVI**

The west coast creel survey finished at the end of August although some areas continued to early September. Please contact Brenda Wright (250-756-7151) for further information.

**Quatsino Sound**

The Quatsino Sound creel program finished at the end of August.

**Note:**

The area-wide SoG creel survey ended early in 2009, and the planned October South Coast Creel Bulletin (Bulletin #7) will no longer be produced.



**South Coast Creel Survey Bulletin #6 – September 2009**

**Contacts:**

For additional information on the South Coast Creel Survey Programs, please contact:

***Johnstone Strait and Quatsino Sound Surveys***

Pieter Van Will

Program Head, Johnstone Strait Salmon Stock Assessment

250-949-9273

***Strait of Georgia Survey***

Steve Baillie

Program Head, Strait of Georgia Salmon Stock Assessment

250-756-7227

***West coast Vancouver Island Survey***

Diana Dobson

Program Head, WCVI Salmon Stock Assessment

250-756-7186



**South Coast Creel Survey Bulletin #6 – September 2009**

**Table 1a** Preliminary recreational kept catch estimates in the Strait of Georgia (SoG), creel area, Sep. 1-30, 2009.

TYPE	GMA	Area	Boat Trips	Chinook	Chum	Coho	Pink	Sockeye	Halibut	Lingcod	Rockfish <sup>1</sup>	
Kept	SoG	13	2901	237	77	411	6472			116	245	
		14	1537	333		133	8					
		15	93	20						4	2	
		16	431	28						84	71	
		17	759	25						134	75	
		18	715	29				114			11	27
		19	1660	207			88	235		503	27	86
		20(GS)	6031	3358	31	1570	6426			82	145	532
		28	1130	207			12	23				
		29	1026	156			15	15				
<b>Kept Total</b>	<b>SoG</b>		<b>16283</b>	<b>4600</b>	<b>108</b>	<b>2229</b>	<b>13293</b>	<b>0</b>	<b>585</b>	<b>521</b>	<b>1038</b>	

**Table 1b** Preliminary recreational released catch estimates in the Strait of Georgia (SoG) creel area, Sep. 1-30, 2009.

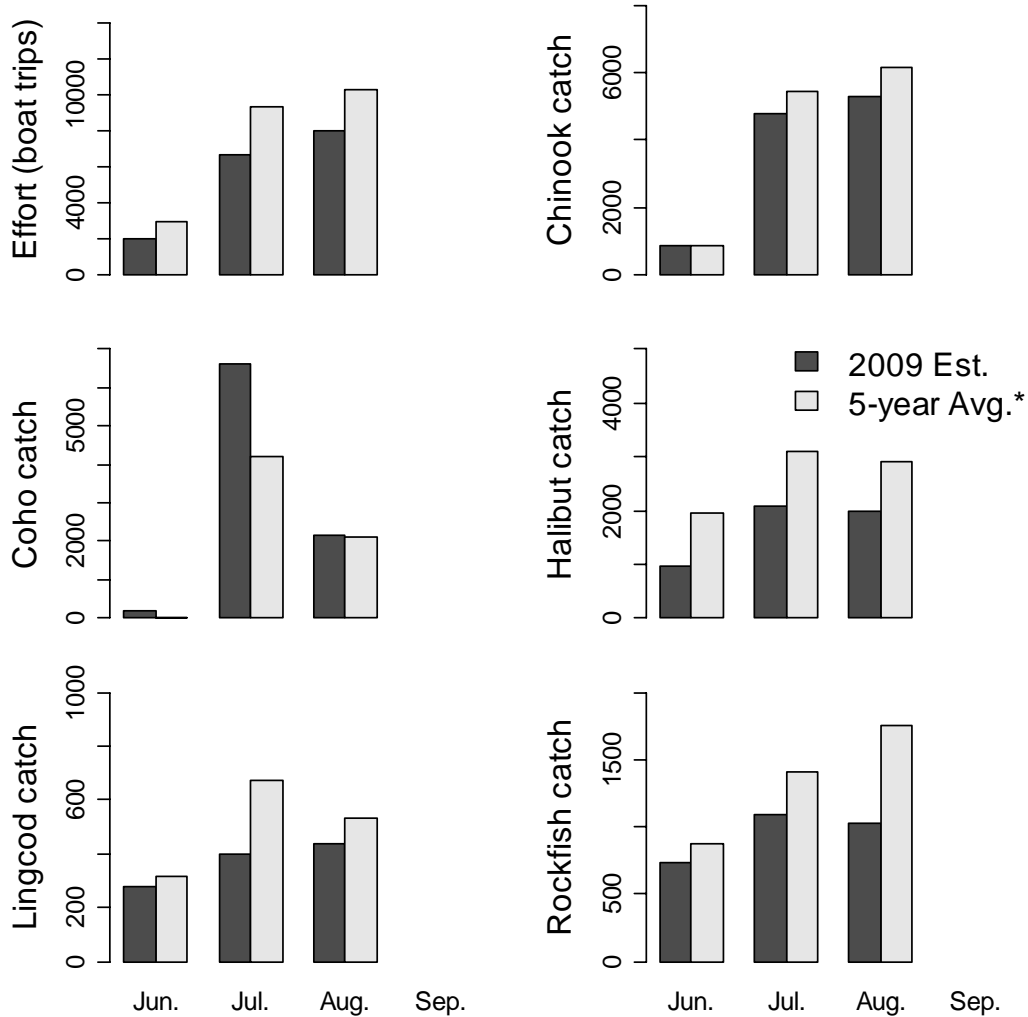
TYPE	GMA	Area	Boat Trips	Chinook	Chum	Coho	Pink	Sockeye	Halibut	Lingcod	Rockfish <sup>1</sup>	
Released	SoG	13	2901	199		1891		77		154		
		14	1537	1007		911				23		
		15	93	41						42	8	
		16	431	89						348	71	
		17	759	355			80			276	106	
		18	715	240			771			440	82	
		19	1660	677			495			727	40	
		20(GS)	6031	12980	8	5572			59	20	478	234
		28	1130	308			23					
		29	1026	515			15					
<b>Released Total</b>	<b>SoG</b>		<b>16283</b>	<b>16411</b>	<b>8</b>	<b>9758</b>	<b>0</b>	<b>136</b>	<b>20</b>	<b>2488</b>	<b>541</b>	

<sup>1</sup> includes yelloweye, quillback, copper, china, tiger

<sup>2</sup> including only those areas surveyed during this time period



South Coast Creel Survey Bulletin #6 – September 2009

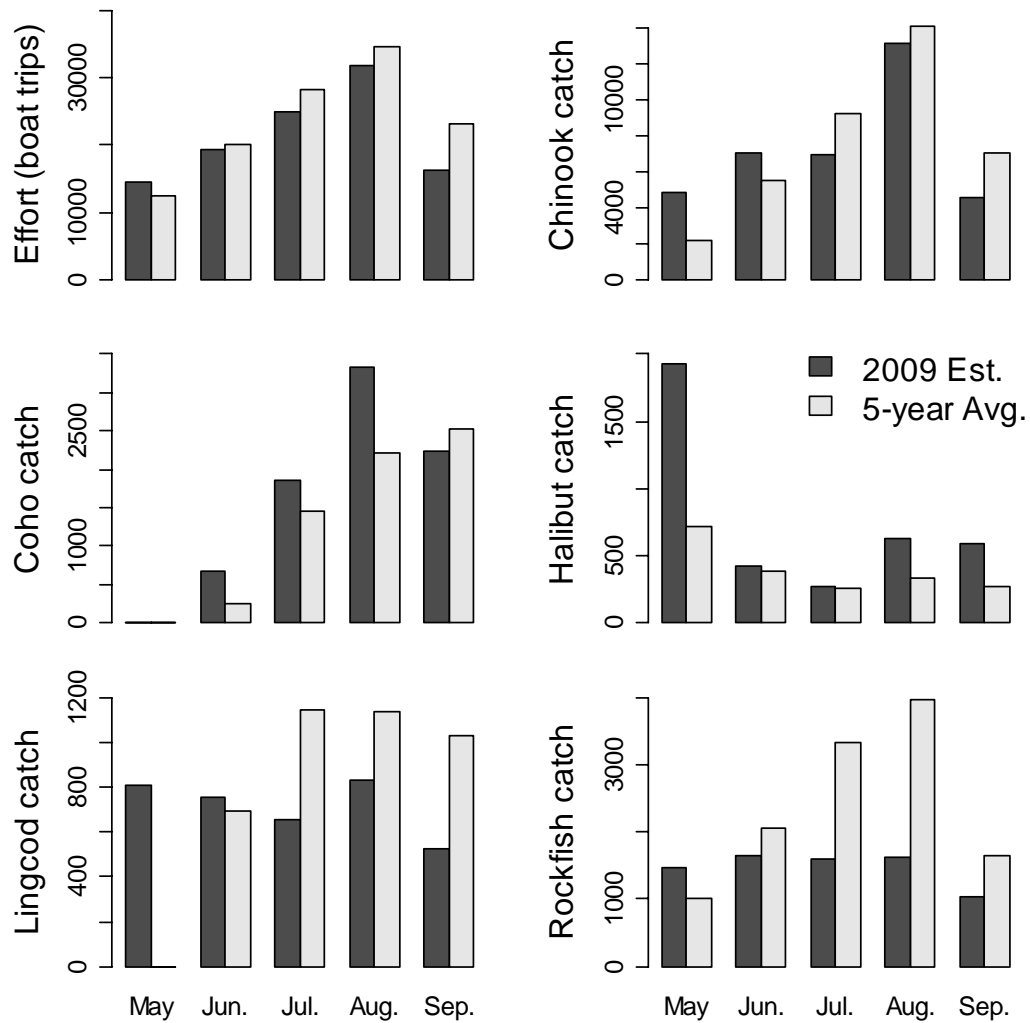


Monthly estimates - Johnstone Strait

**Figure 1** Monthly estimates of effort and kept catch by species in 2009 (dark bars) and the average over the last five years (2004 to 2008 average, light bars) for the Johnstone Strait Creel Survey.



South Coast Creel Survey Bulletin #6 – September 2009

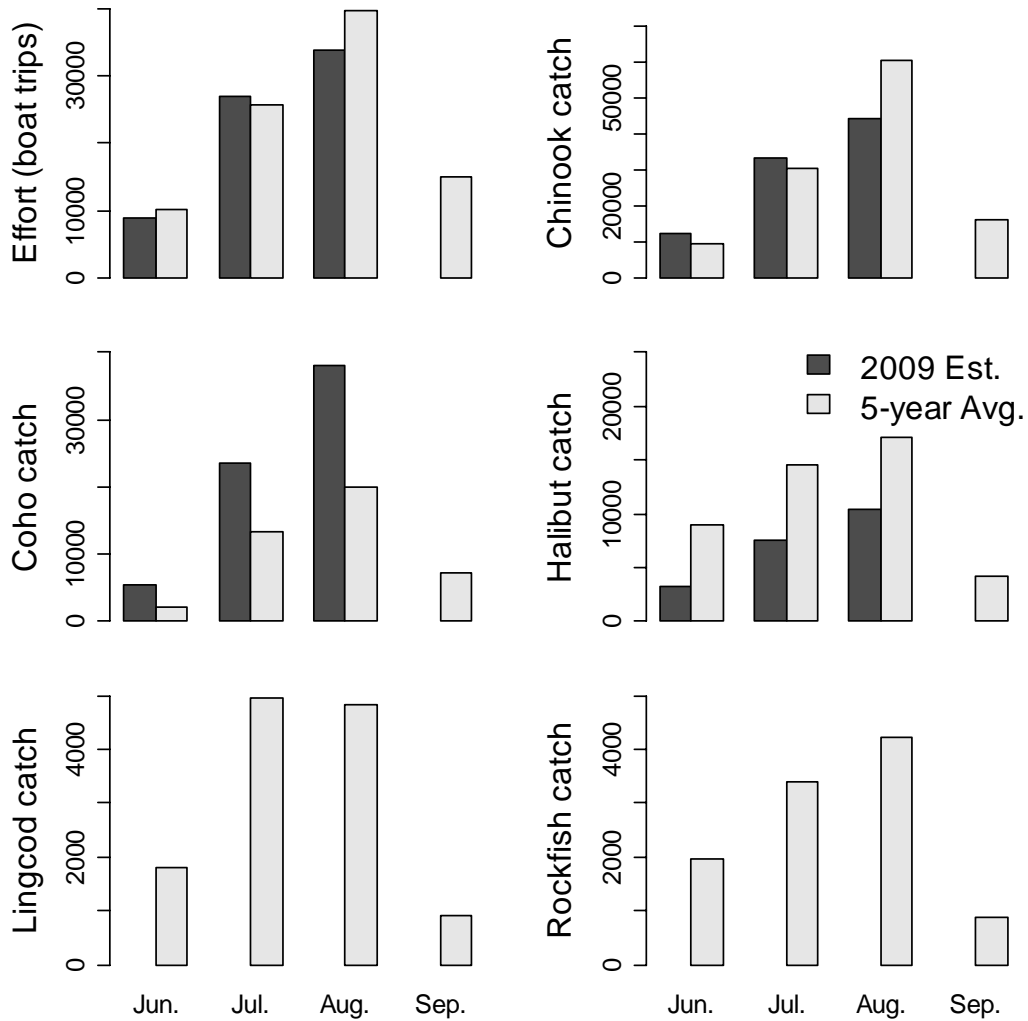


Monthly estimates - Strait of Georgia

**Figure 2** Monthly estimates of effort and kept catch by species in 2009 (dark bars) and the average over the last five years (2004 to 2008 average, light bars) for the Strait of Georgia Creel Survey.



South Coast Creel Survey Bulletin #6 – September 2009

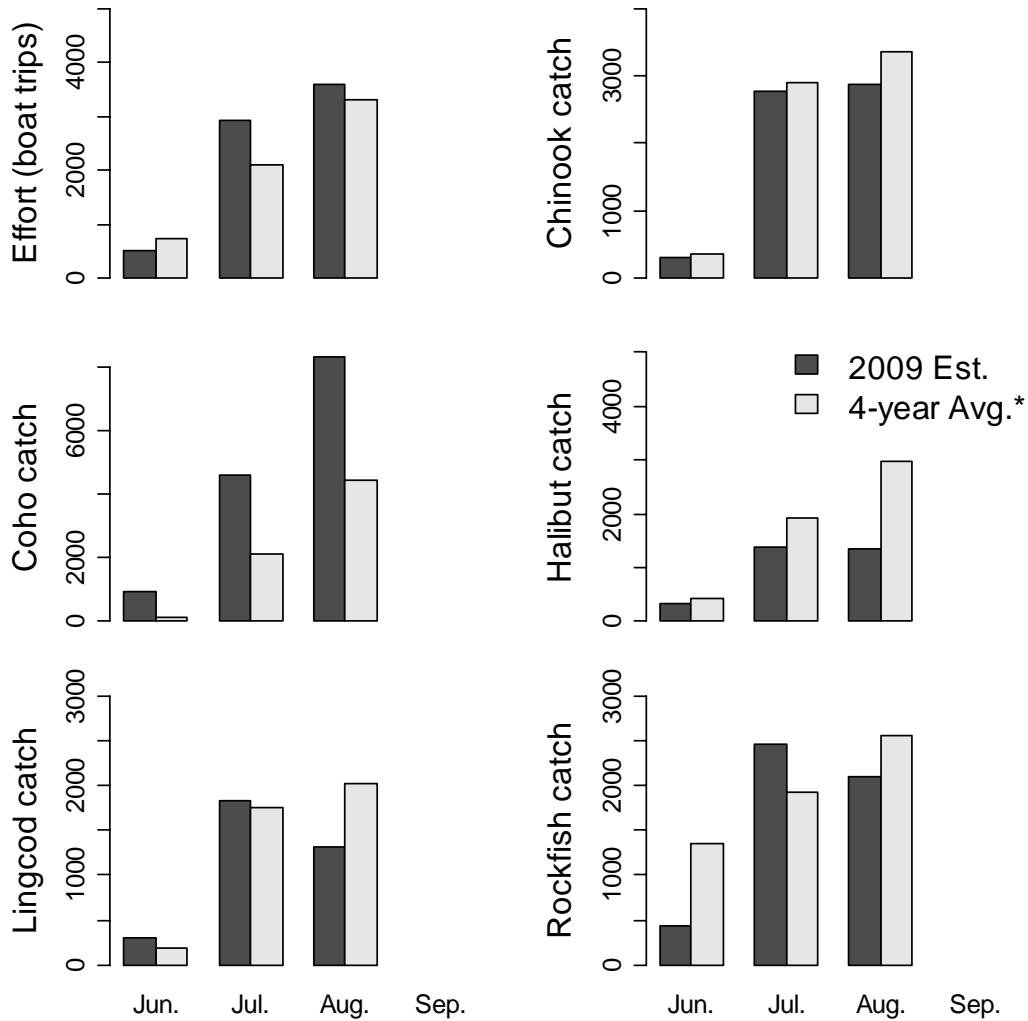


Monthly estimates - WCVI

**Figure 3** Monthly estimates of effort and kept catch by species in 2009 (dark bars) and the average over the last five years (2004 to 2008 average, light bars) for the WCVI Creel Survey. Lingcod and rockfish catches are only estimated post-season for the WCVI survey. Some of the August effort and catch data for Areas 123 and 124 have not been included therefore are underestimated.



South Coast Creel Survey Bulletin #6 – September 2009



Monthly estimates - Quatsino Sound

**Figure 4** Monthly estimates of effort and kept catch by species in 2009 (dark bars) and the average over the last four years (2005 to 2008 average, light bars) for the Quatsino Sound Creel Survey.