



Fisheries and Oceans
Canada

Pêches et Océans
Canada

Canadian
Coast Guard

Garde côtière
canadienne

NOTICES TO MARINERS PUBLICATION EASTERN EDITION

MONTHLY EDITION N°06
June 26, 2020



Safety First, Service Always

Published Monthly by the
CANADIAN COAST GUARD
www.notmar.gc.ca/subscribe

CONTENTS

	Page
Section 1	General and Safety Information..... 1 - 16
Section 2	Chart Corrections..... 17 - 21
Section 3	Radio Aids to Marine Navigation Corrections 22
Section 4	Sailing Directions and Small Craft Guide Corrections..... 23 - 30
Section 5	List of Lights, Buoys and Fog Signals Corrections..... 31 - 32

Notices to Mariners Publication
Eastern Edition
Monthly Edition N°06/2020

Published under the authority of:
Canadian Coast Guard Programs
Aids to Navigation and Waterways
Fisheries and Oceans Canada
Montreal, Quebec
H2Y 2E7

© Her Majesty the Queen in Right of Canada, 2020
Fs152-5E-PDF
ISSN 1719-7678

Available on the Notices to Mariners website:
www.notmar.gc.ca

Disponible en français :
Publication des Avis aux navigateurs
Édition de l'Est
Édition mensuelle N°06/2020

EXPLANATORY NOTES

Geographical positions refer directly to the graduations of the largest scale Canadian Hydrographic Service chart unless otherwise indicated.

Bearings refer to the true compass and are measured clockwise from 000° (North) clockwise to 359°; those relating to lights are from seaward.

Visibility of lights is that in clear weather.

Depths - The units used for soundings (metres, fathoms or feet) are stated in the title of each chart.

Elevations are normally given above Higher High Water, Large Tide unless otherwise indicated.

Distances may be calculated as follows:

1 nautical mile = 1,852 metres (6,076.1 feet)

1 statute mile = 1,609.3 metres (5,280 feet)

1 metre = 3.28 feet

Temporary and Preliminary Notices to Mariners are indicated by a (T) or a (P) in Section 1, respectively. Please note that nautical charts are not amended by the Canadian Hydrographic Service for temporary (T) and preliminary (P) notices. It is recommended that mariners chart these corrections in pencil. For the list of charts affected by (T) & (P) notices, please refer to the index on page ii of the current [Monthly Summary of \(T\) and \(P\) Notices](#) publication.

Please note that, in addition to the temporary and preliminary changes normally advertised as (T) & (P) notices, there are a few permanent changes to aids to navigation that have been advertised as preliminary Notices to Mariners while charts are being updated for new editions.

Marine Information Report & Suggestion Sheet

Mariners are requested to notify the responsible authorities when new or suspected dangers to navigation are discovered, changes observed in aids to navigation or corrections to publications are seen to be necessary. Such communications can be made using the *Marine Information Report & Suggestion Sheet* inserted on the last page of each monthly edition of *Notices to Mariners*.

Canadian Hydrographic Service (CHS) – Information Published in Section 2 of *Notices to Mariners*

Mariners are advised that only the most critical changes that directly affect safety to navigation are issued in Section 2 – Chart Corrections. This limitation is required to ensure that charts remain as clear and easy to read as possible. As a result, mariners may see minor discrepancies of a non-critical nature between information in official publications. For example, a small change in the nominal range or focal height of a light may not result in the production of a chart correction in *Notices to Mariners*, but may result in a correction in the *List of Lights, Buoys and Fog Signals* publication.

In the case of a discrepancy between information provided on CHS charts relating to aids to navigation, and the *List of Lights, Buoys and Fog Signals* publication, the latter shall be deemed as containing the most up-to-date information.

Canadian Nautical Charts & Publications

A source list of Canadian nautical charts and publications is published in Notice No. 14 of the *Notices to Mariners Annual Edition 2020*. The source supply and the prices effective at the time of printing are listed. For current chart edition dates, please refer to the following website: www.chs-shc.gc.ca/charts-cartes/paper-papier/index-eng.asp

CHART CORRECTIONS – SECTION 2

Corrections to nautical charts will be listed in numerical order by chart number. Each chart correction listed applies only to that particular chart. Related charts, if any, will have their own specific correction listed separately.

Users should also refer to CHS *Chart 1: Symbols, Abbreviations and Terms* for additional information pertaining to the correction of charts.

The illustration below describes the elements that will comprise a typical Section 2 chart correction:

Chart Number	Chart Title	Charts latest new edition date	Horizontal Chart Datum	Last Correction
1202	Cap Eternité à/to Saint-Fulgence – New Edition – 20-MAY-94 – NAD 1927			
Weekly chart correction date	6-Aug-1999			LNM/D 23-Jul-1999
	Add	light Fl G	48°26'36.4"N 70°53'08.6"W	
		(See Chart No 1 P24)	(F2007-107) LL (700) DFO(6829264-01)	
	Chart action	Chart No 1 reference no.	CCG reference no.	List of light no.
				CHS reference no.

The last correction number is identified with the **LNM/D** or Last Notice to Mariners Number / Date.

NOTICES TO MARINERS WEBSITE – MONTHLY EDITIONS, CHART CORRECTIONS, AND CHART PATCHES

The Notices to Mariners website allows users to access the [monthly publications](#), [chart corrections](#), and [chart patches](#).

Users can subscribe for free to the [email notification service](#) to receive notifications when charts of interest are updated, including their patches, as well as when a new monthly edition becomes available online.

In addition, the monthly publication and related files to download, such as chart patches and *Sailing Directions* diagrams, can be obtained all together through the download of a single ZIP file.

ADVISORY NAVIGATIONAL WARNINGS / NOTICES TO SHIPPING

The Canadian Coast Guard is implementing a number of changes to the aids to navigation system in Canada.

These changes are advertised as Navigational Warnings, formerly called Notices to Shipping¹, that are broadcast by the Canadian Coast Guard, and are then followed up with Notices to Mariners, then charts are updated by hand correction, reprints or new editions.

Mariners are advised that all relevant Navigational Warnings (NAVWARNs) should be kept until superseded by Notices to Mariners or through revised charts issued by the Canadian Hydrographic Service (CHS).

Navigational Warnings are accessible on the applicable regional page on the Canadian Coast Guard e-Navigation Maritime Information Portal at <http://www.marinfo.gc.ca/e-nav>.

The Canadian Hydrographic Service is reviewing the impact of these changes with the Canadian Coast Guard and together are preparing an action plan on the issuing of chart revisions.

For further information, contact your regional Navigational Warning (NAVWARN) Issuing Desk.

Atlantic Region

* Port aux Basques MCTS Centre

Canadian Coast Guard
49 Stadium Rd.
P.O. Box 99
Port aux Basques, NL A0M 1C0

Telephone: (709) 695-2168 or 1-800-563-9089

Facsimile: (709) 695-7784

Email: NAVWARN.MCTSPortAuxBasques@innav.gc.ca

Website: <http://www.marinfo.gc.ca/e-nav>

* Sydney MCTS Centre

Canadian Coast Guard
1190 Westmount Road
Sydney, NS B1R 2J6

Telephone: (902) 564-7751 or 1-800-686-8676

Facsimile: (902) 564-7662

Email: NAVWARN.MCTSSydney@innav.gc.ca

Website: <http://www.marinfo.gc.ca/e-nav>

Central Region

* Prescott MCTS Centre

Canadian Coast Guard
401 King Street West
P.O. Box 1000
Prescott, ON K0E 1T0

"C" and "Q" Series

Telephone: (613) 925-0666

Facsimile: (613) 925-4519

Email: NAVWARN.MCTSPrescott@innav.gc.ca

Website: <http://www.marinfo.gc.ca/e-nav>

Arctic Region

* Iqaluit MCTS Centre

Operational from approximately mid-May until late December.

Canadian Coast Guard
P.O. Box 189
Iqaluit, NU X0A 0H0

"A" Series

Telephone: (867) 979-5269

"H" Series

Telephone: (867) 979-0310

Facsimile: (867) 979-4264

Email: NAVWARN.MCTSIqaluit@innav.gc.ca

Website: <http://www.marinfo.gc.ca/e-nav>

* Service available in English and French.

¹ The expression "Notice to Shipping" was changed to "Navigational Warning" in January 2019.

INDEX

SECTION 1 – GENERAL AND SAFETY INFORMATION 1

Transport Canada – Restricted Speed Area - St. Clair and Detroit Rivers	1
Canadian Coast Guard Publication – Comments and Suggestions on Notices to Mariners (Notmar) Publications	1
Canadian Hydrographic Service – Modifications to the 2020 Canadian Tide and Current Tables Volume 1 – Atlantic Coast and Bay of Fundy	1
Saguenay-St. Lawrence Marine Park and Surrounding Waters – Whale Protection	1
Transport Canada – COVID-19 Measures, Updates and Guidance	2
Gulf of St. Lawrence – Protection of the North Atlantic Right Whale	3
Canadian Hydrographic Service – Modifications to the 2020 Canadian Tide and Current Tables, Volume 2 – Gulf of St. Lawrence	8
*601 Canadian Hydrographic Service – Nautical Charts	8
*602 Canadian Hydrographic Service – Electronic Navigational Charts	9
*603 Canadian Hydrographic Service – Raster Digital Charts (BSB V3)	9
*604 Transport Canada – Ship Safety Bulletins #14, #15, #16 and #17/2020	9
*605 Saguenay–St. Lawrence Marine Park - Beluga Whale Protection: Slowdown Area at the Mouth of the Saguenay Fjord and Area Closure at Baie Sainte-Marguerite	10
*606 Canadian Coast Guard Publication - Amendments to the Notices to Mariners Annual Edition 2020 - Section A2, Notice 5A: General Regulatory Requirements for All Oceans Act Marine Protected Areas	12
*607 Bassin de Chambly au lac/to Lake Champlain – Lighted Fixed Aids to Navigation Permanently Established ...	14
*608 Lac Saint-Louis – Unlit Buoys Repositioned	14
*609 Harbours in Lake Erie/Havres dans le lac Érié – Unlit Buoys Permanently Discontinued	14
*610 Hopes Advance Bay – Unlit Ranges Repositioned	14
*611(P) Île Marcotte à/to Rapides-des-Joachims – Fixed Aid to Navigation to be Replaced with Lighted Buoy	15
*612(P) Head of / Fond de Placentia Bay – Bell to be Discontinued	15
*613(P) Fort Frances to/à Hostess Island and/et Sandpoint Island – Fixed Aid to Navigation to be Replaced with Lighted Buoy	16

SECTION 2 – CHART CORRECTIONS 17

SECTION 3 – RADIO AIDS TO MARINE NAVIGATION CORRECTIONS 22

*614 Radio Aids to Marine Navigation 2020 (Atlantic, St. Lawrence, Great Lakes, Lake Winnipeg, Arctic and Pacific)	22
--	----

SECTION 4 – SAILING DIRECTIONS AND SMALL CRAFT GUIDE CORRECTIONS 23

SECTION 5 – LIST OF LIGHTS, BUOYS AND FOG SIGNALS CORRECTIONS 31

NUMERICAL INDEX OF CANADIAN CHARTS AFFECTED

Chart No.	Page	Chart No.	Page	Chart No.	Page	Chart No.	Page
1351	14	4846	20				
1430	14	4861	24 , 25				
1553	15	4862	24				
2181	14	4881	29				
2228	32	4911	20				
4001	17	4912	21				
4003	17	4913	21 , 31				
4006	17	5349	14				
4011	17	6108	16				
4012	17	6211	8				
4013	17	6212	8				
4023	17	6214	8				
4230	18	6287	8				
4242	18	6423	8				
4243	18	6428	8				
4244	18 , 31	6429	8				
4337	18 , 31	6436	8				
4340	31						
4404	18						
4405	19						
4466	19 , 32						
4483	19						
4486	19						
4529	24						
4653	29						
4658	29						
4661	29						
4820	25						
4839	15						
4841	20						

TRANSPORT CANADA – RESTRICTED SPEED AREA - ST. CLAIR AND DETROIT RIVERS

(Recurrent publication of notice *1103/12, originally published in the *Notices to Mariners Publication - Eastern Edition 11/2012*.)

Since November 14, 2012, the restricted speed area currently in place as per the St. Clair and Detroit River Navigation Safety Regulations between the Detroit River light and Peche Island light is reduced in size by relocating the southern point of the restricted speed area from its current location at the Detroit River light to a new location at Bar Point light D33.

CANADIAN COAST GUARD PUBLICATION – COMMENTS AND SUGGESTIONS ON NOTICES TO MARINERS (NOTMAR) PUBLICATIONS

In an effort to continuously improve the Notices to Mariners publications and to provide the most efficient service possible, the Notices to Mariners team invites all mariners and other interested parties to submit comments and suggestions on possible improvements to its various publications and services at the following email address: Notmar.XNCR@dfo-mpo.gc.ca

CANADIAN HYDROGRAPHIC SERVICE – MODIFICATIONS TO THE 2020 CANADIAN TIDE AND CURRENT TABLES VOLUME 1 – ATLANTIC COAST AND BAY OF FUNDY

(Recurrent publication of notice *203/20, originally published in the *Notices to Mariners Publication - Eastern Edition 02/2020*.)

The Canadian Hydrographic Service of the Atlantic Region has identified an error in the 2020 Canadian Tide and Current Tables Volume 1 - Atlantic Coast and Bay of Fundy, Tide tables for Holyrood, Newfoundland (station #925)

Mariners must refer to the following link for updated information on Holyrood's Tide Tables:
http://tides.gc.ca/eng/data/table/2020/wlev_sec/925

SAGUENAY-ST. LAWRENCE MARINE PARK AND SURROUNDING WATERS – WHALE PROTECTION

(Recurrent publication of notice *404/20, originally published in the *Notices to Mariners Publication - Eastern Edition 04/2020*.)

The waters in and around the Saguenay–St. Lawrence Marine Park are well known for the resident endangered beluga population and the wide diversity of whales that migrate there to feed, particularly between April and November.

REGULATORY PROTECTION MEASURES

All whale species that are found in the St. Lawrence are protected under the *Marine Mammal Regulations*, pursuant to the *Fisheries Act*. Within the boundaries of the Marine Park, specific measures are set out in the *Marine Activities in the Saguenay–St. Lawrence Marine Park Regulations*, pursuant to the establishment of the *Saguenay–St. Lawrence Marine Park Act*. Any collision with a marine mammal within the Marine Park must immediately be reported to a park warden at 1-866-508-9888. For collisions that occur outside the Marine Park or for any situation involving a marine mammal that is dead or in trouble, contact the emergency network at 1-877-722-5346 or on VHF channel 16.

For more information on the Saguenay–St. Lawrence Marine Park, see notice 5C of the *Notices to Mariners Annual Edition 2020*.

VOLUNTARY PROTECTION MEASURES

Provisional measures in effect from May 1 to October 31, 2020. See map at the end of this notice.

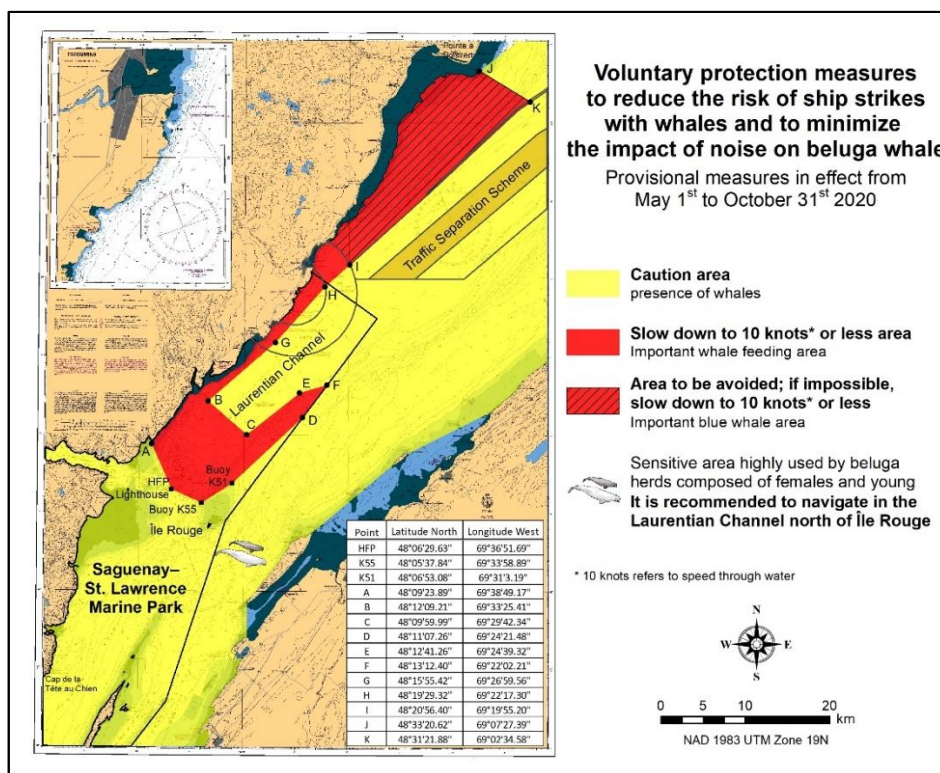
These measures apply to merchant vessels and cruise ships between Pointe à Boisvert and Cap de la Tête au Chien to prevent collisions with whales. These measures should only be taken when they will not jeopardize navigational safety.

Caution area (yellow area): To reduce the risk of collisions with whales that can be present anywhere in this area, heightened vigilance of navigators is critical. Posting a lookout is recommended in order to increase the chances of seeing the whales and thus taking necessary measures to avoid them. If bypassing the whales is not possible, slow down and wait for the animals to move away to a distance greater than 400 metres (0.215 nautical miles) before resuming original speed. It is more difficult to see the animals at night therefore increased caution is recommended.

MONTHLY NOTICES TO MARINERS
EASTERN EDITION 06/2020
SECTION 1 – GENERAL AND SAFETY INFORMATION

Slow down to 10 knots or less area (red area): To reduce the risk of collisions with whales in this feeding area, it is recommended that vessels slow down to a maximum speed through the water of 10 knots and post a lookout. It is further recommended to remain in the Laurentian Channel to the north of Île Rouge to minimize the impact of noise in a sensitive area south of this island, which is highly frequented by herds of beluga whales composed of females and young.

Area to be avoided (hatched red area): To reduce noise and the risk of collisions with whales, vessels should avoid transiting through this area which is highly frequented by blue whales, an endangered species. If the area cannot be avoided, slow down to a speed through the water of 10 knots or less.



TRANSPORT CANADA – COVID-19 MEASURES, UPDATES AND GUIDANCE

(Recurrent publication of notice *401/20, originally published in the *Notices to Mariners Publication - Eastern Edition 04/2020*.)

Please refer to the link below for the latest updates to transportation related measures taken by Transport Canada in response to the evolving novel Coronavirus disease (COVID-19):

<https://www.tc.gc.ca/en/initiatives/covid-19-measures-updates-guidance-tc.html>

For travel advice and all other updates, please visit: Canada.ca/coronavirus

GULF OF ST. LAWRENCE – PROTECTION OF THE NORTH ATLANTIC RIGHT WHALE

(Recurrent publication of notice *504/20, originally published in the *Notices to Mariners Publication - Eastern Edition 05/2020*.)

Reference: Notice *403/20 is cancelled.

Due to changing migration patterns of North Atlantic right whales and their increased presence in the Gulf of St. Lawrence, the Government of Canada has established seasonal speed restrictions in specific zones. These speed restrictions are defined as “static zones”, “dynamic shipping zones”, “seasonal management areas”, a trial “voluntary speed restriction zone” and a “restricted area”. [See the map below for details.](#)

Note: Navigational Warnings with these speed restrictions are considered to be Notices to Shipping, which vessels must follow as per the Interim Order Protecting North Atlantic Right Whales (*Eubalaena glacialis*) in the Gulf of St. Lawrence.

Speed restriction zones are described in monthly Notices to Mariners (NOTMARs), which are published by the Canadian Coast Guard (CCG). The status of these zones is broadcasted through Navigational Warnings (NAVWARNs), which are published by the CCG’s Marine Communications and Traffic Services (MCTS) Centres.

Changes to speed restriction zones

Based on consultations with industry and on scientific data, changes to the speed restriction zones will be effective from April 28th, 2020, while the [restricted area](#) will be implemented at a later date:

- Portions of the static zones located north and south of dynamic shipping zone E are now changed to seasonal management area 1 (north of dynamic shipping zone E) and seasonal management area 2 (south of dynamic shipping zone E).
- A trial voluntary speed restriction of 10.0 knots over the ground spanning from Cabot Strait (a line running from Cape North NS to Cape Ray NL) to the eastern edge of dynamic shipping zone E, at the beginning and end of the season.
- A restricted area in or near Shediac Valley (the effective date and exact location of the area is to be determined and will be based on the observed distribution of the whales. This information will be communicated to mariners via navigational warning and notice to fish harvesters).

Please refer to the latest NAVWARN issued by the CCG-MCTS for all speed restrictions currently in effect.

Speed Restriction Measures for 2020

These restrictions will be in effect from **April 28 to November 15, 2020**.

Static zones

In the static zones, **all** vessels above **13 m** in length overall (LOA) must proceed at a speed of not more than 10.0 knots over the ground.

Coordinates for the northern static zone:

- 50° 20' N 065° 00' W
- 49° 13' N 065° 00' W
- 48° 40' N 064° 13' W
- 48° 40' N 062° 40' W
- 48° 03' N 061° 07.5' W
- 47° 58.1' N 061° 03.5' W
- 48° 00' N 061° 00' W
- 49° 04' N 061° 00' W
- 49° 04' N 062° 00' W
- 49° 43' N 063° 00' W
- 50° 20' N 063° 00' W

Coordinates for the southern static zone:

- 48° 40' N 065° 00' W
- 48° 40' N 062° 40' W
- 48° 03' N 061° 07.5' W
- 47° 58.1' N 061° 03.5' W
- 47° 10' N 062° 30' W
- 47° 10' N 065° 00' W

Mariners will be notified ahead via a NAVWARN should the speed restriction status change, due to inclement weather.

Within any static zone that is not subject to a speed restriction, mariners may proceed at a safe operational speed. Mariners are however encouraged to take into consideration the potential for their vessel striking North Atlantic right whales when considering a “safe operational speed” during navigation.

Dynamic shipping zones

There are five dynamic shipping zones (DSZ) located in the routing systems north and south of Anticosti Island: A, B, C, D and E

Coordinates for the dynamic shipping zones:

Zone A <ul style="list-style-type: none">• 49° 41' N 065° 00' W• 49° 20' N 065° 00' W• 49° 11' N 064° 00' W• 49° 22' N 064° 00' W	Zone B <ul style="list-style-type: none">• 49° 22' N 064° 00' W• 49° 11' N 064° 00' W• 48° 48' N 063° 00' W• 49° 00' N 063° 00' W	Zone C <ul style="list-style-type: none">• 49° 00' N 063° 00' W• 48° 48' N 063° 00' W• 48° 24' N 062° 00' W• 48° 35' N 062° 00' W
Zone D <ul style="list-style-type: none">• 50° 16' N 064° 00' W• 50° 00' N 064° 00' W• 49° 56' N 063° 00' W• 50° 16' N 063° 00' W	Zone E <ul style="list-style-type: none">• 48° 35' N 062° 00' W• 48° 24' N 062° 00' W• 48° 03' N 061° 07.5' W• 47° 58.1' N 061° 03.5' W• 48° 00' N 061° 00' W• 48° 10.5' N 061° 00' W	

If the Government of Canada does not detect North Atlantic right whales in these zones, vessels may transit through them at a safe operational speed.

When the Government of Canada detects a North Atlantic right whale in a dynamic shipping zone, vessels above **13 m** in length overall (LOA):

- will be notified through a NAVWARN; and
- must proceed at a speed of not more than 10.0 knots over the ground within that zone.

Speed restrictions in the dynamic shipping zones

The detection of North Atlantic right whales in one or more dynamic shipping zone(s), will trigger a speed restriction in the concerned zone(s). The speed restriction in the dynamic shipping zone(s) will be in effect for 15 days from the date of issuance of the NAVWARN. We may extend a speed restriction past the 15 days if North Atlantic right whales continue to be detected.

When a NAVWARN is issued implementing a speed restriction in one or more dynamic shipping zone(s), vessels above **13 m** in length (LOA) must not exceed a speed of 10.0 knots over the ground.

Within any zone that is not subject to a speed restriction, mariners may proceed at a safe operational speed. Mariners are however encouraged to take into consideration the potential for their vessel striking North Atlantic right whales when considering a "safe operational speed" during navigation.

Seasonal management areas

Seasonal management area 1 (SMA-1) and seasonal management area 2 (SMA-2) are speed restriction areas located north and south of dynamic shipping zone E, respectively.

Within seasonal management areas, vessels above **13 m** in length (LOA):

- must restrict their speed so as not to exceed 10.0 knots over the ground from April 28th to June 30th, 2020; and
- are allowed to proceed at safe operational speed from July 1st to November 15th, 2020, unless a North Atlantic right whale is detected. If a whale is detected, a speed restriction of 10.0 knots over the ground will be triggered for 15 days from the date of issuance of the NAVWARN. The speed restriction may be extended past the 15 days if North Atlantic right whales continue to be detected.

Coordinates for the SMA-1:

- 49° 04' N 062° 00' W
- 49° 04' N 061° 00' W
- 48° 10.5' N 061° 00' W
- 48° 35' N 062° 00' W

Coordinates for the SMA-2:

- 48° 24' N 062° 00' W
- 48° 03' N 061° 07.5' W
- 47° 58.1' N 061° 03.5' W
- 47° 26.69' N 062° 00' W

Restricted area

In the summer months, an important proportion of the total North Atlantic right whale population gathers for feeding and surface activity near the [Shediac Valley](#). Since this makes the North Atlantic right whale more susceptible to vessel collisions, a mandatory restricted area will be put in place in or near [Shediac Valley](#). The effective date and exact location of the area is to be determined and will be based on the observed distribution of the whales. An Interim Order will come into force in early summer and will provide the necessary details. This information will also be communicated to mariners through navigational warnings and notices to fish harvesters.

Vessels above **13 m** in length (LOA) will be required to:

- avoid the area; or
- if required to navigate through this area, reduce their speed as to not exceed 8.0 knots over the ground.

The restricted area will be determined in collaboration with the Department of Fisheries and Oceans. Once established, the location and dimension of the restricted area will not be modified.

Trial voluntary speed restriction in Cabot Strait

To coincide with the North Atlantic right whales entering and exiting the Gulf of St. Lawrence, we are putting in place a trial voluntary speed restriction in Cabot Strait from April 28th to June 15th, 2020, and from October 1st to November 15th, 2020.

- During this period, vessels above 13 m in length (LOA) will be asked to voluntarily reduce their speed so as to not exceed 10.0 knots over the ground.
- Outside of the restriction period, vessels will be able to proceed at safe operational speeds.

Voluntary speed restriction zone coordinates:

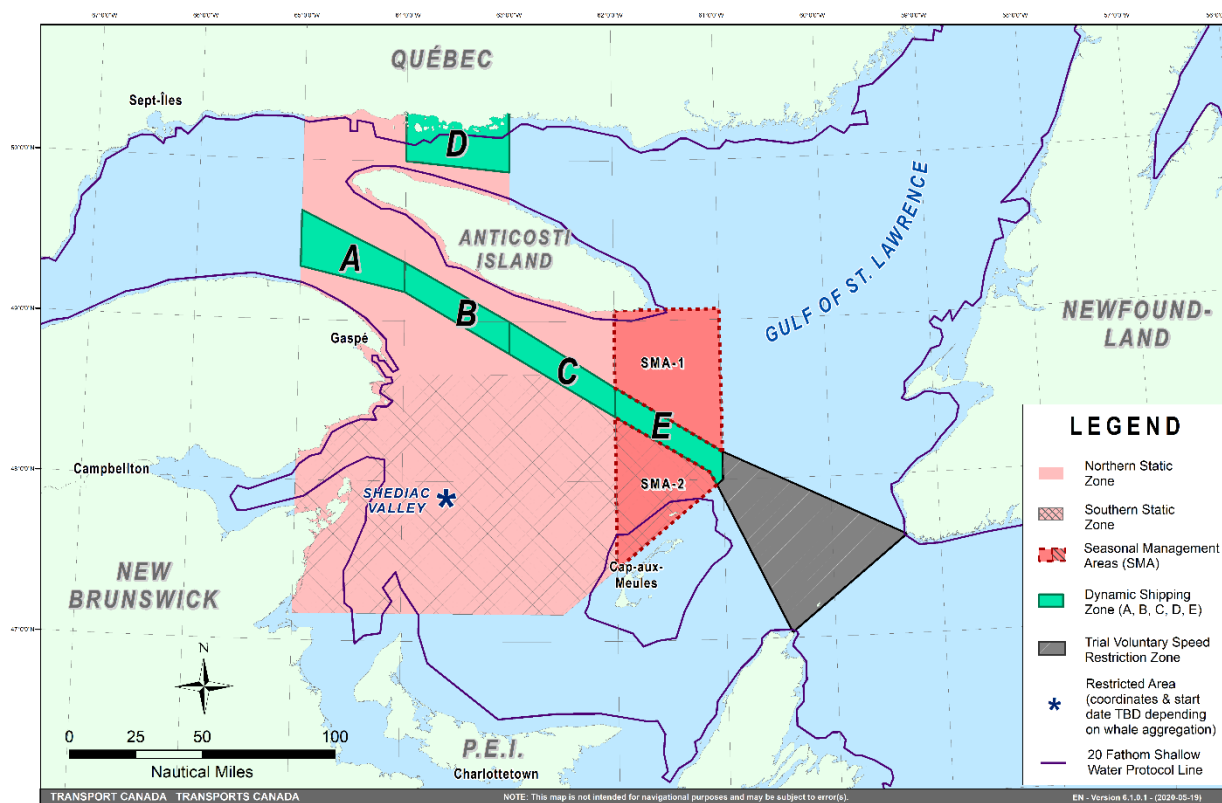
- 48° 10.5' N 061° 00' W
- 47° 37.2' N 059° 18.5' W
- 47° 02' N 060° 23.7' W
- 47° 58.1' N 061° 03.5' W
- 48° 00' N 061° 00' W

Map of the Gulf of St. Lawrence

The following map shows

- the speed restriction zone, in pink (static zones);
- the dynamic shipping zones, in green;
- the seasonal management areas, in dark pink; and
- the trial voluntary speed restriction zone, in grey; and
- the focus of the restricted area, noted with a star.

MONTHLY NOTICES TO MARINERS
EASTERN EDITION 06/2020
SECTION 1 – GENERAL AND SAFETY INFORMATION



Map showing the two static zones (north and south), the five dynamic shipping zones (A, B, C, D and E), the seasonal management areas, the trial voluntary speed restriction zone and the 20 fathom shallow water protocol line.

This map is for visual representation only and is not to be used for navigation or enforcement.

NAVWARN broadcasts

The CCG-MCTS issues and publishes NAVWARNs:

- by radio broadcast; and
- online at [Canada's Maritime Information Portal](#) and its [Navigational Warnings](#) site.

Mariners must ensure they have accurate and up-to-date information about the protection of the North Atlantic right whale, as in all applicable NOTMARs and NAVWARNs.

For the North Atlantic right whale speed restriction, the NAVWARN that is currently in effect will be provided to vessels subject to the *Vessel Traffic Services Zone Regulations* or the *Eastern Canada Vessel Traffic Services Zone Regulations*:

Outbound vessels

- at Calling-in-Point 10 (St-Laurent); or
- upon a departure downstream from the Quebec pilot station (including the Saguenay River, Chaleur Bay, Miramichi Bay, etc.)

Inbound vessels

- when a clearance to enter Canadian waters is granted

Vessels in transit

- at the last reporting point prior to entering the speed restriction area; and/or
- at 10 nautical miles prior to entering the speed restriction zone

For those vessels not subject to the above-mentioned regulations, vessel operators are required to monitor broadcasts by the Canadian Coast Guard's Marine Communications and Traffic Services (MCTS) network for the most up to date information. For marine radio frequencies and broadcast times, information may be found in the [Radio Aids to Marine Navigation](#) publication.

Aids to navigation

The Canadian Coast Guard is currently testing virtual Automatic Identification System (AIS) aids to navigation (AIS AtoN) in specific areas. These aids notify mariners of a dynamic shipping zone subject to a speed restriction, per NOTMAR 819(T)/2016.

Each dynamic shipping zone is delimited by four virtual AIS AtoN, which can be displayed on a ship's navigation equipment, such as

- Electronic Chart Display and Information System (ECDIS);
- Electronic Chart System (ECS);
- RADAR;
- Minimum Keyboard Display (MKD); and
- Electronic Nautical Chart (ENC).

The Canadian Coast Guard broadcasts the virtual AIS AtoN only when a speed restriction is in effect in one or more testing zones.

Mariners must select the virtual AIS AtoN symbol to view a message such as "SectA1 Spd Lim 10 kt." This message refers to a speed restriction in effect for a specific zone.

Note: This system is not the primary way we communicate this information.

Compliance and enforcement

You must comply with the NAVWARNs broadcasted and published by the Canadian Coast Guard related to any Interim Order made pursuant to the *Canada Shipping Act, 2001*, aimed at regulating the navigation for the purposes of protecting the North Atlantic right whales.

If you do not comply with instructions in the NAVWARNs or in the Interim Orders, you could face:

- administrative monetary penalties up to a maximum of CAN \$250,000; and/or
- penal sanctions under the Canada Shipping Act, 2001.

If your vessel appears to have violated the speed restriction, Transport Canada Marine Safety inspectors will review all information provided through AIS and seek an explanation from the master.

No exemptions to the speed restriction will be granted in advance. However, if a deviation from the speed restrictions is necessary for safety reasons, the following information must be entered into the bridge logbook:

- Reasons for deviation
- Speed at which vessel is operated
- Latitude and longitude at time of deviation
- Time and duration of deviation
- Master of the vessel shall sign and date the bridge logbook entry

For any deviation, Transport Canada will review and consider reasons such as

- Navigating to ensure vessel safety;
- Weather conditions;
- Force majeure (unforeseeable circumstances); and
- Responding to emergencies.

Report a North Atlantic right whale sighting

If you see a North Atlantic right whale that is entangled, injured or dead, please report it to your nearest Canadian Coast Guard Marine Communications and Traffic Services Centre, or as follows:

Southern part of the Gulf of St. Lawrence

Marine Animal Response Society
Telephone: 1-866-567-6277

Newfoundland and Labrador

Whale Release and Strandings
Telephone: 1-888-895-3003

For the Québec Sector

Marine Mammal Emergencies
Telephone: 1-877-722-5346

If you see live, free-swimming whales

- Call 1-902-440-8611 (local) or 1-844-800-8568 (toll free)
- Email: XMARWhalesightings@dfo-mpo.gc.ca

Please consult WhaleMap for the latest right whale observations:

<https://whalemap.ocean.dal.ca/>

CANADIAN HYDROGRAPHIC SERVICE – MODIFICATIONS TO THE 2020 CANADIAN TIDE AND CURRENT TABLES, VOLUME 2 – GULF OF ST. LAWRENCE

(Recurrent publication of notice *506/20, originally published in the *Notices to Mariners Publication - Eastern Edition 05/2020*.)

The Canadian Hydrographic Service of the Quebec Region has identified a correction in the 2020 Canadian Tide and Current Tables, Volume 2, Gulf of St. Lawrence, on page 79.

Mariners should replace a section of Table 3 with the corresponding section annexed below:

<https://www.notmar.gc.ca/publications/monthly-mensuel/images/ed052020-part1-vol2-p79.pdf>

***601 CANADIAN HYDROGRAPHIC SERVICE – NAUTICAL CHARTS**

CHARTS	MAIN TITLE	SCALE	PUBLISHED	CAT#	PRICE
New Editions					
6211	Big Traverse Bay	1:80 000	28-FEB-2020	3	19.95
6212	Kenora to/à Aulneau Peninsula (Northern Portion / Partie nord)	1:40 000	28-FEB-2020	3	19.95
6214	Sabaskong Bay	1:40 000	28-FEB-2020	3	19.95
6287	Minaki to/à Kenora	1:25 000	28-FEB-2020	3	19.95
6423	Askew Islands to/à Bryan Island Kilometre 1180 / Kilometre 1240	1:50 000	17-APR-2020	4	12.00
6428	Aklavik Channel to/au Napoiak Channel including/y compris Aklavik Channel to/à Aklavik Kilometre 1530 / Kilometre 1597	1:50 000	24-APR-2020	4	12.00
6429	Kilometre/Kilomètre 1580 - 1645 including/y compris East Channel, Inuvik to/à Kilometre/Kilomètre 1645	1:50 000	24-APR-2020	4	12.00
6436	Napoiak Channel, including / y compris Schooner and/et Taylor Channels Kilometre/Kilomètre 1590 - 1650	1:50 000	24-APR-2020	4	12.00

***602 CANADIAN HYDROGRAPHIC SERVICE – ELECTRONIC NAVIGATIONAL CHARTS**

S-57 ENC NUMBER	CHART TITLE
NEW PRODUCTS	
CA373503	Approches à/Approaches to Rivière Koksoak
CA376738	Lake Melville
CA376739	Epinette Point to/à Terrington Basin
CA576740	Goose Bay Narrows
WITHDRAWN PRODUCTS	
CA376212	Lake Melville
CA476213	Mulligan Bay
CA476214	Sebaskachu Bay
CA476215	Epinette Point to Terrington Basin

***603 CANADIAN HYDROGRAPHIC SERVICE – RASTER DIGITAL CHARTS (BSB V3)**

CHARTS	MAIN TITLE	SCALE	PUBLISHED
New Editions			
RM-6211	Big Traverse Bay	1:80 000	28-FEB-2020
RM-6212	Kenora to/à Aulneau Peninsula (Northern Portion / Partie nord)	1:40 000	28-FEB-2020
RM-6214	Sabaskong Bay	1:40 000	28-FEB-2020
RM-6287	Minaki to/à Kenora	1:25 000	28-FEB-2020

***604 TRANSPORT CANADA – SHIP SAFETY BULLETINS #14, #15, #16 AND #17/2020**

New **Ship Safety Bulletins** have recently been posted on the Transport Canada website at www.tc.gc.ca/ssb-bsn/.

To view or download these bulletins, please click on the links below:

[SSB#14/2020](#) – Carrying lifejackets on board passenger vessels
RDIMS#15932670

[SSB#15/2020](#) – Temporary Guidance Regarding the Use of Non-Medical Masks or Face Coverings for Workers in the Marine Transportation Sector
RDIMS#16551265

[SSB#16/2020](#) – Hazards and Risks of Girding During Towing Operations
RDIMS#15849635

[SSB#17/2020](#) – Sheltered Waters Voyages
RDIMS#164500991

Sign up for [e-Bulletin](#) to receive an e-mail notice each time a new Ship Safety Bulletin is published on our website.

Contact us at marinesafety-securitemaritime@tc.gc.ca or 1-855-859-3123 (Toll Free).

***605 SAGUENAY–ST. LAWRENCE MARINE PARK - BELUGA WHALE PROTECTION: SLOWDOWN AREA AT THE MOUTH OF THE SAGUENAY FJORD AND AREA CLOSURE AT BAIE SAINTE-MARGUERITE**

The Saguenay–St. Lawrence Marine Park and its surrounding area are at the heart of endangered beluga whale critical summer habitat. Marine mammal protection measures have been put in place in accordance with the *Marine Activities in the Saguenay–St. Lawrence Marine Park Regulations* within the limits of the Marine Park.

However, important feeding, calving and rearing areas for beluga whales require greater protection to ensure the recovery of the species. The portion of the Saguenay situated between the mouth of the Fjord and Baie Sainte-Marguerite is one of the areas most used by females and their young from May to October. The mouth of the Saguenay is known as a feeding ground and Baie Sainte-Marguerite as a calving and rearing area.

In order to prevent collisions with beluga whales, a compulsory 15-knot slowdown area is in effect from May 1st to October 31st at the mouth of the Saguenay. To ensure tranquility for female belugas and their young during the critical calving period, access to Baie Sainte-Marguerite is prohibited to all vessels from June 21st to September 21st, except for special authorizations (see description below).

For safety reasons, *the slowdown area measure at the mouth of the Saguenay Fjord does not apply* to cargo ships (see the monthly edition of *Notice to Mariners* from May to October for voluntary protection measures in the St. Lawrence Estuary). An enhanced vigilance is, however, recommended to all navigators between the mouth of the Saguenay Fjord and Baie Sainte-Marguerite for the protection of beluga whales.

For more information on the Saguenay–St. Lawrence Marine Park, see notice 5C of the *Notices to Mariners Annual Edition 2020* or visit <http://parcmarin.qc.ca/home/>.

REGULATORY PROTECTION MEASURES — BELUGA WHALE

Entire Marine Park Territory:

- When beluga whales are less than half a nautical mile (926 metres) from a motorized vessel, the vessel must maintain a speed of between 5 and 10 knots.
- All vessels, including human-powered vessels (kayaks and canoes), must continue to move forward and maintain their heading.
- All vessels must maintain a minimum distance of 400 metres from beluga whales at all times.

For more information concerning the regulations, consult: <http://marinepark.ca/protect/#regulations>.

Mouth of the Saguenay Fjord (Figure 1) — Slowdown Area (area cross-hatched in red):

- Maximum speed at the mouth of the Saguenay between buoys S7 and S8 and the ferry docks between Baie-Sainte-Catherine and Tadoussac is 15 knots from May 1st to October 31st.

Baie Sainte-Marguerite (Figure 2) — Area Closure (red area):

- From June 21st to September 21st, vessels must not enter the red area, which follows a line between Cap Nord-Ouest and Cap Sainte-Marguerite.
- Special authorizations are granted only for kayaks, canoes and recreational fishermen who must travel without stopping along a corridor within 10 metres of the shore or in shallow areas.

VOLUNTARY PROTECTION MEASURES

Baie Sainte-Marguerite sector (Figure 2) — Transit Area (area cross-hatched in yellow):

- From June 21st to September 21st, navigation in this area is recommended at a speed of between 5 and 10 knots without stopping.

The purpose of this transit area is to favour respect of the *Marine Activities in the Saguenay–St. Lawrence Marine Park Regulations*, since beluga whales are often present in the Baie Sainte-Marguerite sector.

INFORMATION

All incidents, including collisions with whales, must be reported without delay by dialling 1-866-508-9888. For any other situation concerning a marine mammal that is either dead or in trouble, contact the emergency network at 1-877-722-5346, or use VHF channel 16.

Figure 1

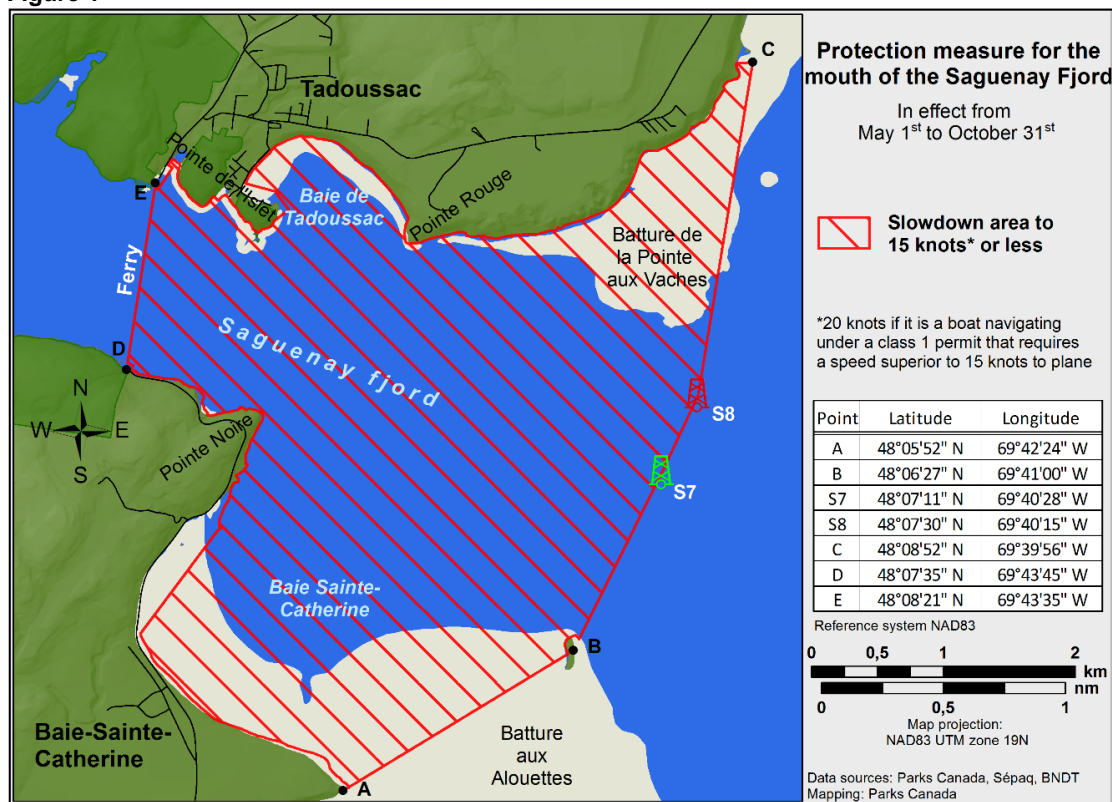
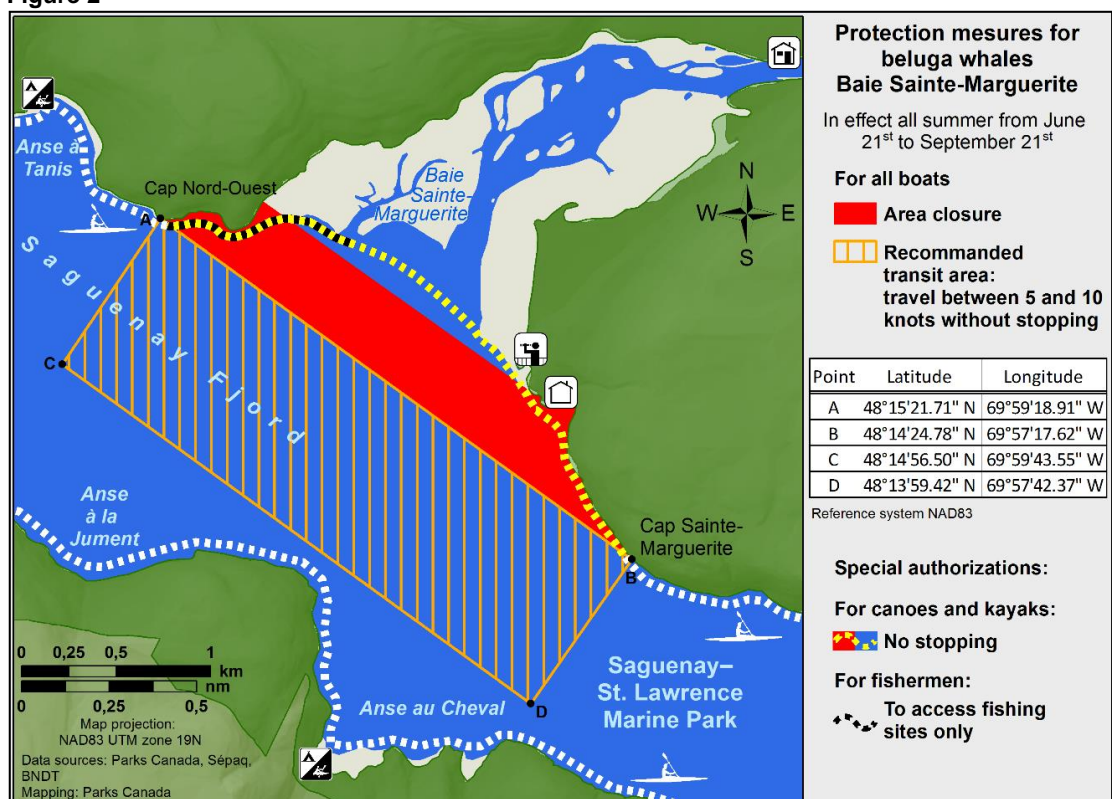


Figure 2



***606 CANADIAN COAST GUARD PUBLICATION - AMENDMENTS TO THE NOTICES TO MARINERS ANNUAL EDITION 2020 - SECTION A2, NOTICE 5A: GENERAL REGULATORY REQUIREMENTS FOR ALL OCEANS ACT MARINE PROTECTED AREAS**

Page 26:

AMEND AS FOLLOWS:

Voluntary Guidelines for Ships Operating in the Areas ~~(Year Round)~~

The following procedures are recommended **year round** in order to safeguard the Marine Protected Areas and its resources.

Vessels should adhere to the following measures for safety reasons and to ensure marine mammal protection:

- It is strongly advised that commercial vessels remain in the community supply routes. These routes are generally marked by Canadian Coast Guard buoys and they should be followed whenever possible.

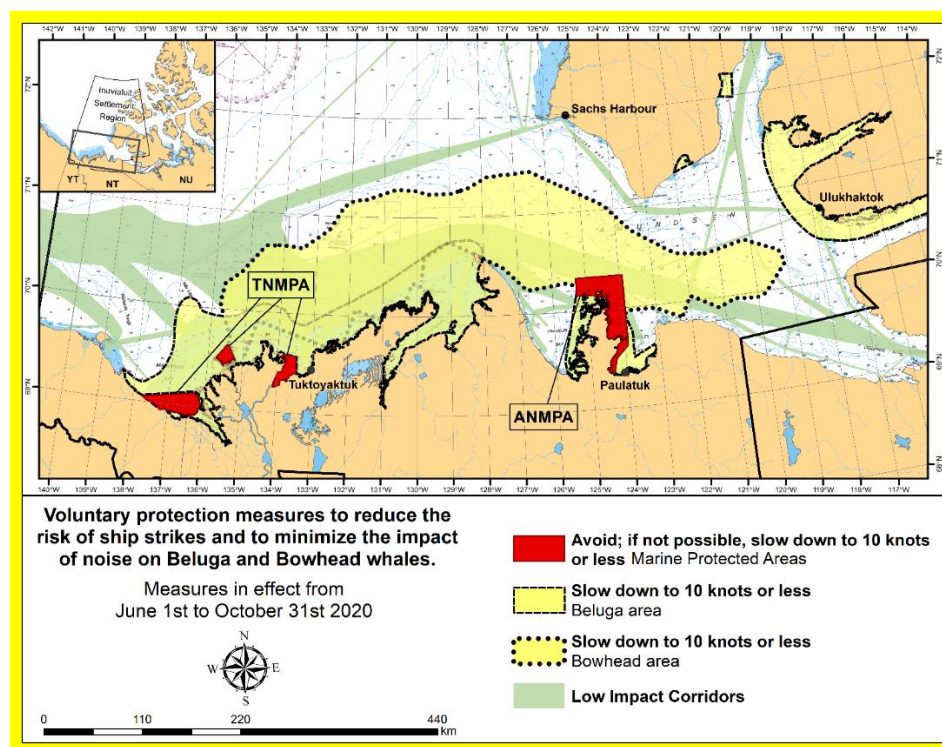
The following measures are in effect from June 1st to October 31st, 2020. See map below.

These measures apply to merchant vessels, cruise ships, small vessels and adventure craft within the boundaries of the MPAs and the additional identified areas to prevent collisions with whales and to mitigate the underwater noise generated by the vessels. These measures should only be taken when they will not jeopardize navigational safety.

Avoid (red area): To reduce the risk of underwater noise disturbance and collisions with whales within the MPAs, vessels should avoid transiting through the MPAs if possible. If passage through this area is required, vessels should slow down to a maximum speed through the water of 10 knots and post a lookout such as a marine mammal observer in order to increase the chances of seeing the whales and thus taking necessary measures to avoid them. If bypassing the whales is not possible, slow down and wait for the animals to move away to a distance greater than 400 metres (0.215 nautical miles) before resuming original speed up to 10 knots. It is more difficult to see the animals in rain, fog, or in rough sea states, therefore increased caution is recommended.

Slow down to 10 knots or less (yellow area): To reduce the risk of underwater noise disturbance and collisions with whales within this area, it is recommended that vessels should slow down to a maximum speed through the water of 10 knots, remain in the navigation and marked community supply channels and post a lookout.

These voluntary measures are secondary to rights under the Inuvialuit Final Agreement.



Page 30:

AMEND AS FOLLOWS:

Voluntary Guidelines for Ships Operating in the Areas (~~Year Round~~)

Vessels should adhere to the following measures **year round** for safety reasons and to ensure marine mammal protection:

- It is strongly advised that commercial vessels remain in the community supply routes. These routes are generally marked by Canadian Coast Guard buoys and they should be followed whenever possible.
- Ice breaking activities should be avoided in the Cape Parry polynya whenever possible due to the high level of marine mammal aggregations.

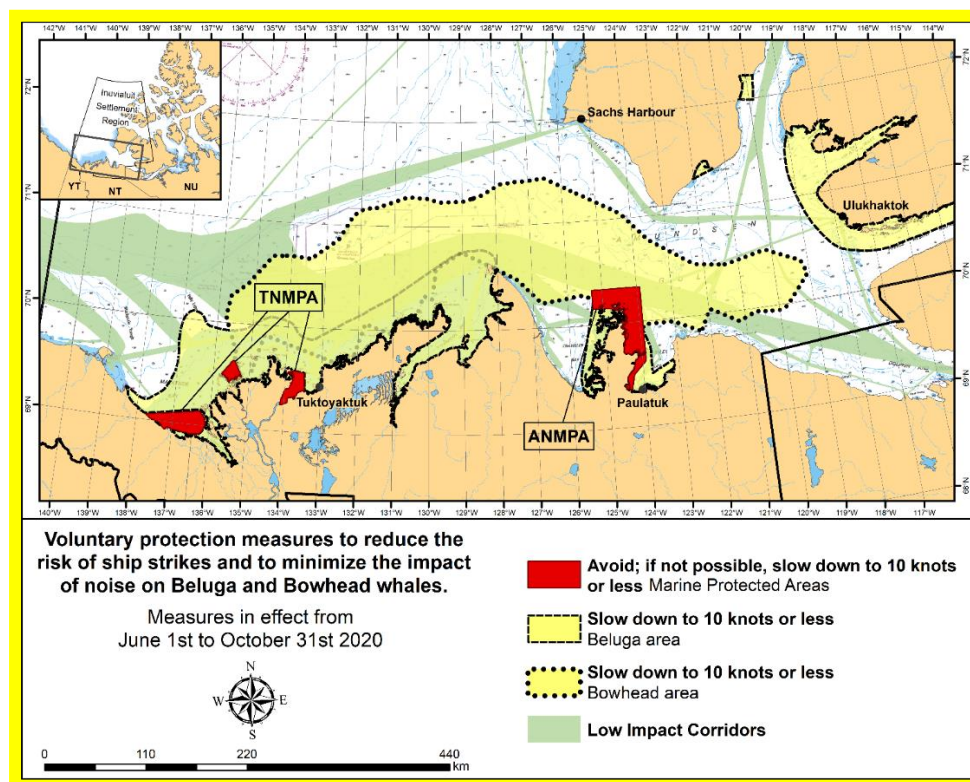
The following measures are in effect from **June 1st to October 31st, 2020**. See map below.

These measures apply to merchant vessels, cruise ships, small vessels and adventure craft within the boundaries of the MPAs and the additional identified areas to prevent collisions with whales and to mitigate the underwater noise generated by the vessels. These measures should only be taken when they will not jeopardize navigational safety.

Avoid (red area): To reduce the risk of underwater noise disturbance and collisions with whales within the MPAs, vessels should avoid transiting through the MPAs if possible. If passage through this area is required, vessels should slow down to a maximum speed through the water of 10 knots and post a lookout such as a marine mammal observer in order to increase the chances of seeing the whales and thus taking necessary measures to avoid them. If bypassing the whales is not possible, slow down and wait for the animals to move away to a distance greater than 400 metres (0.215 nautical miles) before resuming original speed up to 10 knots. It is more difficult to see the animals in rain, fog, or in rough sea states, therefore increased caution is recommended.

Slow down to 10 knots or less (yellow area): To reduce the risk of underwater noise disturbance and collisions with whales within this area, it is recommended that vessels should slow down to a maximum speed through the water of 10 knots, remain in the navigation and marked community supply channels and post a lookout.

These voluntary measures are secondary to rights under the Inuvialuit Final Agreement.



MONTHLY NOTICES TO MARINERS
EASTERN EDITION 06/2020
SECTION 1 – GENERAL AND SAFETY INFORMATION

***607 BASSIN DE CHAMBLY AU LAC/TO LAKE CHAMPLAIN – LIGHTED FIXED AIDS TO NAVIGATION PERMANENTLY ESTABLISHED**

Reference Chart: 1351

The following lighted fixed aids to navigation have been permanently established:

Fort Lennox	(LL 12860)	(45° 07' 24.5"N 073° 16' 07.1"W)
Fort Lennox	(LL 12861)	(45° 07' 23.9"N 073° 16' 08.0"W)
Île aux Noix	(LL 12862)	(45° 07' 15.8"N 073° 15' 51.0"W)

(Q2020-012 to 014)

***608 LAC SAINT-LOUIS – UNLIT BUOYS REPOSITIONED**

Reference Chart: 1430

The following unlit buoys have been repositioned to the following coordinates:

Buoy AH21	(LL 5021.45):	45° 19' 41.6"N 073° 51' 01.6"W
Buoy AH22	(LL 5021.46):	45° 19' 42.2"N 073° 51' 01.7"W
Buoy AH23	(LL 5021.47):	45° 19' 40.4"N 073° 51' 02.6"W
Buoy AH24	(LL 5021.48):	45° 19' 39.7"N 073° 51' 03.3"W
Buoy AH25	(LL 5021.49):	45° 19' 33.1"N 073° 51' 11.6"W
Buoy AH26	(LL 5021.5):	45° 19' 33.7"N 073° 51' 10.1"W
Buoy AH27	(LL 5021.51):	45° 19' 37.5"N 073° 51' 04.4"W
Buoy AH28	(LL 5021.52):	45° 19' 39.9"N 073° 51' 05.4"W

(Q2020-098 to 105)

***609 HARBOURS IN LAKE ERIE/HAVRES DANS LE LAC ÉRIÉ – UNLIT BUOYS PERMANENTLY DISCONTINUED**

Reference Chart: 2181

The following unlit buoys have been permanently discontinued:

Port Stanley Information Buoy INFO1	(LL 7168.1)	42° 39' 29.1"N 081° 12' 50.7"W
Port Stanley Information Buoy INFO2	(LL 7168.2)	42° 39' 29.1"N 081° 12' 49.9"W
Port Stanley Information Buoy INFO3	(LL 7168.3)	42° 39' 30.4"N 081° 12' 49.9"W

(B2020-014 to 016)

***610 HOPES ADVANCE BAY – UNLIT RANGES REPOSITIONED**

Reference Chart: 5349

The following unlit ranges have been repositioned to the following coordinates:

Pointe Range	(LL 6438.35):	59° 19' 34.1"N 069° 34' 09.0"W
Pointe Range	(LL 6438.36):	59° 18' 42.1"N 069° 36' 02.3"W
Colline Apex	(LL 6438.41):	59° 18' 56.2"N 069° 39' 26.8"W
Colline Apex	(LL 6438.42):	59° 18' 47.9"N 069° 39' 53.9"W
Merganser Cove	(LL 6438.45):	59° 21' 05.1"N 069° 40' 40.3"W
Merganser Cove	(LL 6438.46):	59° 21' 07.6"N 069° 40' 52.2"W

(Q2020-074, 077 to 081)

***611(P) ÎLE MARCOTTE À/TO RAPIDES-DES-JOACHIMS – FIXED AID TO NAVIGATION TO BE REPLACED WITH LIGHTED BUOY**

Reference Chart: 1553

The Canadian Coast Guard proposes to discontinue the following fixed aid to navigation, replace it with a lighted buoy and add a light to a separate aid:

Short Turn Island (LL 1310): (45° 55' 49.3"N 077° 15' 23.6"W)

Comments on this action are solicited from mariners and other interested parties by September 25, 2020, three months following the initial publication date of June 26, 2020. Following this date, this notice will be cancelled. Comments should be directed to the following:

Supervisor, Ryan Goodearle
Aids to Navigation & Waterways
Canadian Coast Guard
520 Exmouth Street
Sarnia, ON N7T 8B1
Telephone: (519) 383-1871
Email: Ryan.Goodearle@dfo-mpo.gc.ca

Any objections raised must state the facts on which they are based and should include supporting information on safety, commerce and public benefit.

(B2020-017)

***612(P) HEAD OF / FOND DE PLACENTIA BAY – BELL TO BE DISCONTINUED**

Reference Chart: 4839

The Canadian Coast Guard proposes to permanently discontinue the bell from the following aid to navigation:

Southern Harbour light and bell buoy ES (LL 38.5) (47° 41' 52.3"N 053° 58' 37.0"W)

The buoy and the light will remain.

Comments on this action are solicited from mariners and other interested parties by September 25, 2020, three months following the initial publication date of June 26, 2020. Following this date, this notice will be cancelled. Comments should be directed to the following:

A/Superintendent, Aids to Navigation
Canadian Coast Guard
P.O. Box 1236
Unit 2 - 185 John Yeo Drive
Charlottetown, PEI C1A 7M8
Telephone: (902) 566-7936
Email: Claire.MacLaren@dfo-mpo.gc.ca

Any objections raised must state the facts on which they are based and should include supporting information on safety, commerce and public benefit.

(N2020-031)

***613(P) FORT FRANCES TO/À HOSTESS ISLAND AND/ET SANDPOINT ISLAND – FIXED AID TO NAVIGATION TO BE REPLACED WITH LIGHTED BUOY**

Reference Chart: 6108

The Canadian Coast Guard proposes to discontinue the following fixed aid to navigation and replace it with a lighted buoy:

Crowe Island (LL 1446): (48° 43' 59.5"N 093° 18' 16.8"W)

Comments on this action are solicited from mariners and other interested parties by September 25, 2020, three months following the initial publication date of June 26, 2020. Following this date, this notice will be cancelled. Comments should be directed to the following:

Supervisor, Ryan Goodearle
Aids to Navigation & Waterways
Canadian Coast Guard
520 Exmouth Street
Sarnia, ON N7T 8B1
Telephone: (519) 383-1871
Email: Ryan.Goodearle@dfo-mpo.gc.ca

Any objections raised must state the facts on which they are based and should include supporting information on safety, commerce and public benefit.

(D2020-021)

MONTHLY NOTICES TO MARINERS
EASTERN EDITION 06/2020
SECTION 2 – CHART CORRECTIONS

4001 - Gulf of Maine to Strait of Belle Isle / au Detroit de Belle Isle - New Edition - 01-DEC-1995 - NAD 1983

12-JUN-2020

LNMD. 06-MAR-2020

Add wreck, least depth unknown, PA
(See Chart No. 1, K29, B7)

43°10'24.0"N 069°17'42.0"W

(USCG:06/20) DFO(6308980-02)

4003 - Cape Breton to / à Cape Cod - New Edition - 21-MAR-2003 - NAD 1983

12-JUN-2020

LNMD. 03-APR-2020

Add wreck, least depth unknown, PA
(See Chart No. 1, K29, B7)

43°10'24.0"N 069°17'42.0"W

(USCG:06/20) DFO(6308980-02)

4006 - Newfoundland and Labrador/Terre-Neuve-et-Labrador to Bermuda / aux Bermudes - New Edition - 08-AUG-2003 - NAD 1983

12-JUN-2020

LNMD. 06-MAR-2020

Add wreck, least depth unknown, PA
(See Chart No. 1, K29, B7)

43°10'24.0"N 069°17'42.0"W

(USCG:06/20) DFO(6308980-02)

4011 - Approaches to / Approches à Bay of Fundy / Baie de Fundy - New Edition - 03-JAN-2003 - NAD 1983

19-JUN-2020

LNMD. 20-MAR-2020

Amend FI 6s 16m 9M to read LFI 6s16m9M against light
(See Chart No. 1, P16)

43°37'48.0"N 066°01'37.0"W

This notice affects Electronic Navigational Chart: CA276206, CA376018, CA476048

(F2020023) LL(283) DFO(6308988-01)

4012 - Yarmouth to / à Halifax - New Edition - 14-FEB-2003 - NAD 1983

19-JUN-2020

LNMD. 27-MAR-2020

Amend FI 6s 16m 9M to read LFI 6s16m9M against light
(See Chart No. 1, P16)

43°37'50.0"N 066°01'36.0"W

This notice affects Electronic Navigational Chart: CA276206, CA376018, CA476048

(F2020023) LL(283) DFO(6308988-01)

4013 - Halifax to / à Sydney - New Edition - 06-SEP-2002 - NAD 1983

05-JUN-2020

LNMD. 29-MAY-2020

Amend FI(3)20s 42ft 9M to read FI(2) 18s42ft9M against light
(See Chart No. 1, P16)

45°45'55.0"N 062°40'50.0"W

This notice affects Electronic Navigational Chart: CA276286, CA376691, CA576464

(G2020015) LL(918) DFO(6308962-01)

4023 - Northumberland Strait / Détroit de Northumberland - New Edition - 27-DEC-2002 - NAD 1983

05-JUN-2020

LNMD. 29-MAY-2020

Amend FI(3) 20s 42ft 9M to read FI(2) 18s42ft9M against light
(See Chart No. 1, P16)

45°45'58.0"N 062°40'45.0"W

This notice affects Electronic Navigational Chart: CA276286, CA376691, CA576464

(G2020015) LL(918) DFO(6308962-01)

MONTHLY NOTICES TO MARINERS
EASTERN EDITION 06/2020
SECTION 2 – CHART CORRECTIONS

4230 - Little Hope Island to / à Cape St Marys - New Chart - 15-JUN-1990 - NAD 1983

19-JUN-2020

LNMD. 15-MAY-2020

Amend FI6s 16m 9M to read LFI 6s16m9M against light 43°37'44.0"N 066°01'35.0"W
(See Chart No. 1, P16)
This notice affects Electronic Navigational Chart: CA276206, CA376018, CA476048
(F2020023) LL(283) DFO(6308988-01)

4242 - Cape Sable Island to / aux Tusket Islands - New Edition - 28-AUG-1992 - NAD 1983

19-JUN-2020

LNMD. 10-MAY-2019

Amend FI R to read ISO R 2s against light 43°38'08.2"N 066°00'59.6"W
(See Chart No. 1, P16)
This notice affects Electronic Navigational Chart: CA476048
(F2020022) LL(284) DFO(6308987-01)

Amend FI6s 16m 9M to read LFI 6s16m9M against light 43°37'43.1"N 066°01'35.9"W
(See Chart No. 1, P16)
This notice affects Electronic Navigational Chart: CA276206, CA376018, CA476048
(F2020023) LL(283) DFO(6308988-01)

4243 - Tusket Islands to / à Cape St Marys - New Edition - 11-OCT-2002 - NAD 1983

19-JUN-2020

LNMD. 15-MAY-2020

Amend FI 6s 16m 9M to read LFI 6s16m9M against light 43°37'42.7"N 066°01'37.2"W
(See Chart No. 1, P16)
This notice affects Electronic Navigational Chart: CA276206, CA376018, CA476048
(F2020023) LL(283) DFO(6308988-01)

4244 - Wedgeport and Vicinity / et les abords - New Edition - 26-DEC-2003 - NAD 1983

19-JUN-2020

LNMD. 14-FEB-2020

Amend FI R to read ISO R 2s against light 43°38'07.2"N 066°00'59.4"W
(See Chart No. 1, P16)
This notice affects Electronic Navigational Chart: CA476048
(F2020022) LL(284) DFO(6308987-01)

Amend FI 6s 16m9M to read LFI 6s16m9M against light 43°37'42.6"N 066°01'34.9"W
(See Chart No. 1, P16)
This notice affects Electronic Navigational Chart: CA276206, CA376018, CA476048
(F2020023) LL(283) DFO(6308988-01)

4337 - Alma (and Approaches / et les Approaches) - New Edition - 07-JUN-2002 - NAD 1983

12-JUN-2020

LNMD. 03-MAR-2017

Add breakwater with legend Bkw between 45°36'02.3"N 064°56'38.1"W
(See Chart No. 1, F4.1) and 45°36'00.0"N 064°56'37.0"W
DFO(6308989-01)

Reposition light Iso R from 45°36'00.1"N 064°56'38.9"W
(See Chart No. 1, P1, P16) to 45°36'00.0"N 064°56'37.0"W
(F2020024) LL(155) DFO(6308989-02)

4404 - Cape George to / à Pictou - New Edition - 28-FEB-2014 - NAD 1983

05-JUN-2020

LNMD. 13-SEP-2019

Amend FI(3)20s13m9M to read FI(2) 18s13m9M against light 45°45'52.2"N 062°40'50.4"W
(See Chart No. 1, P16)
This notice affects Electronic Navigational Chart: CA276286, CA376691, CA576464
(G2020015) LL(918) DFO(6308962-01)

MONTHLY NOTICES TO MARINERS
EASTERN EDITION 06/2020
SECTION 2 – CHART CORRECTIONS

4405 - Pictou Island to / aux Tryon Shoals - New Edition - 21-FEB-2003 - NAD 1983

05-JUN-2020

LNMD. 29-MAY-2020

Amend FI(3) 20s 42ft 9M to read FI(2) 18s42ft9M against light 45°45'53.4"N 062°40'47.8"W
(See Chart No. 1, P16)
This notice affects Electronic Navigational Chart: CA276286, CA376691, CA576464
(G2020015) LL(918) DFO(6308962-01)

19-JUN-2020

LNMD. 05-JUN-2020

Add black, yellow and black East cardinal lighted pillar buoy Q(3) 10s, 46°09'12.9"N 063°07'45.4"W
marked CJB
(See Chart No. 1, Q130.3)
This notice affects Electronic Navigational Chart: CA376161, CA476179
(G2020037) LL(983.5) DFO(6308995-01)

Add yellow and black South cardinal pillar buoy, marked CJA 46°06'06.2"N 063°11'37.0"W
(See Chart No. 1, Q130.3)
This notice affects Electronic Navigational Chart: CA376161, CA476179
(G2020036) DFO(6308996-01)

4466 - Hillsborough Bay - New Edition - 21-MAR-2003 - NAD 1983

19-JUN-2020

LNMD. 29-MAY-2020

Add black, yellow and black East cardinal lighted pillar buoy Q(3) 10s, 46°09'12.9"N 063°07'45.4"W
marked CJB
(See Chart No. 1, Q130.3)
This notice affects Electronic Navigational Chart: CA376161, CA476179
(G2020037) LL(983.5) DFO(6308995-01)

Add yellow and black South cardinal pillar buoy, marked CJA 46°06'06.2"N 063°11'37.0"W
(See Chart No. 1, Q130.3)
This notice affects Electronic Navigational Chart: CA376161, CA476179
(G2020036) DFO(6308996-01)

4483 - Caribou Harbour - New Edition - 10-JAN-2003 - NAD 1983

05-JUN-2020

LNMD. 02-AUG-2019

Amend FI(3) 20s 13m 9M to read FI(2) 18s13m9M against light 45°45'52.4"N 062°40'49.8"W
(See Chart No. 1, P16)
This notice affects Electronic Navigational Chart: CA276286, CA376691, CA576464
(G2020015) LL(918) DFO(6308962-01)

4486 - Baie des Chaleurs / Chaleur Bay - New Edition - 19-FEB-1999 - NAD 1983

12-JUN-2020

LNMD. 07-FEB-2020

Replace green port hand lighted pillar bell buoy FIG, marked EA3 with yellow, 47°56'59.2"N 064°38'20.7"W
black and yellow West cardinal lighted pillar buoy Q(9) 15s, marked EAE
(See Chart No. 1, Q130.3, Qg)
This notice affects Electronic Navigational Chart: CA376187, CA476275
(G2020031) LL(1266) DFO(6308990-01)

Amend EE to read EG against red and white fairway lighted pillar whistle buoy 47°53'14.2"N 064°45'47.6"W
Mo(A), marked EE
(See Chart No. 1, Qh)
This notice affects Electronic Navigational Chart: CA376187, CA476275
(G2020032) LL(1276.2) DFO(6308991-01)

MONTHLY NOTICES TO MARINERS
EASTERN EDITION 06/2020
SECTION 2 – CHART CORRECTIONS

4841 - St. Bride's - New Edition - 29-MAY-2015 - NAD 1983

12-JUN-2020

LN/D. 27-MAR-2020

Affix

patch

46°55'05.0"N 054°10'35.0"W

Download Patch - ftp://ftp.dfo-mpo.gc.ca/patches/4841_6308898_1_202005110630.pdf

This notice affects Electronic Navigational Chart: CA576297

DFO(6308898-01)

4846 - Motion Bay to / à Cape St Francis - New Edition - 15-DEC-1995 - NAD 1983

26-JUN-2020

LN/D. 26-JUL-2019

Add

subsurface Ocean Data Acquisition System ODAS/SADO with known
depth of 20 metres

47°33'12.6"N 052°34'28.2"W

(See Chart No. 1, L25)

This notice affects Electronic Navigational Chart: CA376015

DFO(6308978-01)

4911 - Entrée à / Entrance to Miramichi River - New Edition - 27-JAN-2006 - NAD 1983

05-JUN-2020

LN/D. 29-NOV-2019

Add

depth of 3.6 metres

47°08'52.2"N 064°58'56.2"W

(See Chart No. 1, I10)

This notice affects Electronic Navigational Chart: CA476133

DFO(6308947-01)

Add

depth of 2.8 metres

47°07'44.5"N 064°59'16.1"W

(See Chart No. 1, I10)

This notice affects Electronic Navigational Chart: CA476133

DFO(6308947-02)

Add

depth of 2.6 metres

47°07'33.8"N 064°59'05.1"W

(See Chart No. 1, I10)

This notice affects Electronic Navigational Chart: CA476133

DFO(6308947-03)

Delete

depth of 3.6 metres

47°07'21.1"N 064°58'50.2"W

(See Chart No. 1, I10)

This notice affects Electronic Navigational Chart: CA476133

DFO(6308947-04)

Add

depth of 2.1 metres

47°07'22.3"N 064°58'52.0"W

(See Chart No. 1, I10)

This notice affects Electronic Navigational Chart: CA476133

DFO(6308947-05)

Add

depth of 2.9 metres

47°06'31.5"N 064°58'14.2"W

(See Chart No. 1, I10)

This notice affects Electronic Navigational Chart: CA476133

DFO(6308947-06)

Add

depth of 5.6 metres

47°06'25.1"N 064°58'05.6"W

(See Chart No. 1, I10)

This notice affects Electronic Navigational Chart: CA476133

DFO(6308947-07)

MONTHLY NOTICES TO MARINERS
EASTERN EDITION 06/2020
SECTION 2 – CHART CORRECTIONS

4912 - Miramichi - New Edition - 27-JAN-2006 - NAD 1983

05-JUN-2020

LNMD. 27-OCT-2017

Replace	depth of 6.3 metres with depth of 5.8 metres (See Chart No. 1, I10) This notice affects Electronic Navigational Chart: CA476125	47°08'04.3"N 065°11'07.3"W
		<i>DFO(6308947-08)</i>
Add	depth of 5.6 metres (See Chart No. 1, I10) This notice affects Electronic Navigational Chart: CA476125	47°08'06.9"N 065°11'35.9"W
		<i>DFO(6308947-09)</i>
Replace	depth of 6.7 metres with depth of 6.1 metres (See Chart No. 1, I10) This notice affects Electronic Navigational Chart: CA476125	47°08'08.4"N 065°12'03.6"W
		<i>DFO(6308947-10)</i>
Add	submerged wreck Wk (See Chart No. 1, K23) This notice affects Electronic Navigational Chart: CA476125	47°03'39.2"N 065°26'36.8"W
		<i>DFO(6308947-12)</i>

4912 - Continuation A - New Edition - 27-JAN-2006 - NAD 1983

05-JUN-2020

LNMD. 27-OCT-2017

Delete	depth of 7.7 metres (See Chart No. 1, I10) This notice affects Electronic Navigational Chart: CA476126	47°02'04.4"N 065°28'04.5"W
		<i>DFO(6308947-11)</i>
Add	submerged wreck Wk (See Chart No. 1, K23) This notice affects Electronic Navigational Chart: CA476125	47°03'39.2"N 065°26'36.8"W
		<i>DFO(6308947-12)</i>
Add	depth of 0.8 metres (See Chart No. 1, I10) This notice affects Electronic Navigational Chart: CA476126	47°02'04.9"N 065°28'03.8"W
		<i>DFO(6308947-13)</i>

4913 - Caraquet Harbour, Baie de Shippegan and / et Miscou Harbour - New Chart - 07-AUG-1992 - NAD 1983

12-JUN-2020

LNMD. 20-SEP-2019

Replace	green port hand lighted pillar bell buoy FIG, marked EA3 with yellow, black and yellow West cardinal lighted pillar buoy Q(9) 15s, marked EAE (See Chart No. 1, Q130.3, Qg) This notice affects Electronic Navigational Chart: CA376187, CA476275	47°56'54.2"N 064°38'21.6"W
		<i>(G2020031) LL(1266) DFO(6308990-01)</i>
Amend	EE to read EG against red and white fairway lighted pillar whistle buoy Mo(A), marked EE (See Chart No. 1, Qh) This notice affects Electronic Navigational Chart: CA376187, CA476275	47°53'14.2"N 064°45'47.6"W
		<i>(G2020032) LL(1276.2) DFO(6308991-01)</i>

***614 RADIO AIDS TO MARINE NAVIGATION 2020 (ATLANTIC, ST. LAWRENCE, GREAT LAKES, LAKE WINNIPEG, ARCTIC AND PACIFIC)**

Page 2-1

AMEND AS FOLLOWS:

Telephone: 902-426-9750 or 902-426-9751	MCTS Operations
1-888-528-6444	MCTS Operations, Toll-Free
902- 486-5472 407-7512	Commercial Public Correspondence Service
902-426-9738	Officer-in-Charge
902-426-4956	ECAREG

Page 2-25

AMEND AS FOLLOWS:

Telephone: 709-695-2167	MCTS Operations
709-695- 2467 2886	Commercial Public Correspondence Service
709-695-2133	Officer-in-Charge

Page 4-38

AMEND AS FOLLOWS:

On September 30, 2019, the United States Coast Guard permanently discontinued the following DGPS sites: Appleton (Washington), Whidbey Island (Washington), Fort Stevens (Oregon). For more information consult: WWW.NAVCEN.USCG.GOV under the Nationwide DGPS tab.

~~Over the course of~~ At the end of June 2020, the USCG will be discontinuing its remaining 17 additional DGPS beacon sites. Some of those sites, located near the Great Lakes, provide DGPS signals in areas that are not covered by Canadian Coast Guard (CCG).

CCG will continue to monitor the closure of the USCG DGPS sites and communicate information to affected mariners. For the time being, and until further notice, the Canadian Coast Guard will not discontinue any of its DGPS sites.

MONTHLY NOTICES TO MARINERS
EASTERN EDITION 06/2020

SECTION 4 – SAILING DIRECTIONS AND SMALL CRAFT GUIDE CORRECTIONS

All Sailing Directions Publications – Appendices

Delete: “Pages A1 and A2”

Replace by: Pages A1 and A2 published in this monthly edition.

<https://www.notmar.gc.ca/publications/monthly-mensuel/images/ed062020-part4-SARAppendix-en.pdf>

(N2020-00.2)

ATL 100 — General Information Atlantic Coast, 2nd Edition, 2007

Inside front and back covers – after, “1-800-563-2444”

Add: 1-709-772-5151

(N2020-00.3)

Chapter 1 – After paragraph 163, “**Table 1.1 Search and Rescue Stations (SAR)** – Newfoundland and Labrador.”

Delete: “and St. John’s”

Replace by: , Old Perlican and St. Anthony.

(N2020-00.4)

ATL 101 — Newfoundland, Northeast and East Coasts, Second Edition, 2013

Inside front and back covers – after, “1-800-563-2444”

Add: 1-709-772-5151

(N2020-00.5)

Chapter 1 – After paragraph 59

Insert: 59.1 *Canadian Coast Guard* lifeboat, *CCGS Pennant Bay*, call sign CGA2542 is stationed adjacent to the previously described L-shaped Public wharf at St. Anthony. The station operates 24 hours per day from May to December, and maintains a daily radio watch from 0830 to 1630 local time on channel 16 (156.8 MHz) and channel 51 (2182 kHz). Contact can also be made through MRSC St. John’s at 709-772-5151, 1-800-563-2444, via the nearest coastal radio station or by any other available means.

(N2020-00.6)

Chapter 1 – Adjacent to paragraph 59.1, add a lifesaving station pictograph.

(N2020-00.7)

Chapter 4 – Delete paragraph 214

Replace by: 214 A *Canadian Coast Guard* inshore rescue boat, 7.5 m (25 ft) long is stationed at Lewisporte and is available for **search and rescue** 24 hours each day from mid-May to mid-September. Its responsibility covers the area in Notre Dame Bay south of a line drawn from Southern Head (Long Island) to Fortune Harbour and Long Point (Twillingate). Contact can be made on channel 16 (156.8 MHz), through MRSC St. John’s at 709-772-5151, 1-800-563-2444, via the nearest coastal radio station or by any other available means.

(N2020-00.8)

SECTION 4 – SAILING DIRECTIONS AND SMALL CRAFT GUIDE CORRECTIONS

Chapter 5 – Before paragraph 100

Insert: *Charts 4862, 4861*

(N2020-00.9)

Chapter 5 – Before paragraph 104

Delete: “, 4529 ”

(N2020-01.0)

Chapter 5 – Before paragraph 106

Delete: “4529, 4862”

Replace by: 4862, 4861

(N2020-01.1)

Chapter 5 – Paragraph 110

Delete: “12 feet (3.8 m)”

Replace by: 11 feet (3.3 m)

(N2020-01.2)

Chapter 5 – Paragraph 110

Delete: “14 feet (4.3 m)”

Replace by: 13 feet (3.9 m)

(N2020-01.3)

Chapter 5 – Paragraph 114

Delete: “20 feet (6.1 m)”

Replace by: 17 feet (5.3 m)

(N2020-01.4)

Chapter 5 – Paragraph 114

Delete: “15 feet (4.6 m)”

Replace by: 14 feet (4.4 m)

(N2020-01.5)

Chapter 5 – Paragraph 117

Delete: “1 foot (0.3 m)”

Replace by: 2 feet (0.5 m)

(N2020-01.6)

Chapter 5 – Paragraph 119

Delete: “66 feet (20 m)”

Replace by: 164 feet (50 m)

(N2020-01.7)

Chapter 5 – Paragraph 122

Delete: “depths of 9 to 13 feet (2.6 to 4.1 m) along”

Replace by: a least depth of 9 feet (2.8 m) alongside

(N2020-01.8)

Chapter 5 – Paragraph 123

Delete: “depths of 9 to 10 feet (2.8 to 3.1 m)”

Replace by: a least depth of 15 feet (4.7 m)

(N2020-01.9)

SECTION 4 – SAILING DIRECTIONS AND SMALL CRAFT GUIDE CORRECTIONS

Chapter 5 – Paragraph 124

Delete: “depths of 4 to 9 feet (1.3 to 2.6 m)”

Replace by: a least depth of 6 feet (1.9 m)

(N2020-02.0)

Chapter 5 – Before paragraph 126

Delete: “*Chart 4820*”

Replace by: *Charts 4861, 4820*

(N2020-02.1)

Chapter 5 – Paragraph 136

Delete: “A Public **wharf**... west shore of the arm.”

Replace by: A Public **wharf** with a bent outer end extends from the west shore of Joe Batts Arm. There is a least depth of 2.3 m (8 ft) alongside the north side of its outer section, 40 m (131 ft) long.

(N2020-02.2)

Chapter 5 – Paragraph 137

Delete: “depths of 2.1 to 3.2 m (7 to 10 ft) alongside.”

Replace by: a least depth of 4.5 m (15 ft) alongside the south face of its outer section.

(N2020-02.3)

Chapter 5 – Paragraph 137

Delete: “2.7 m (9 ft)”

Replace by: 3.1 m (10 ft)

(N2020-02.4)

Chapter 5 – Paragraph 147

Delete: “**Lanes Rocks** lie... over the east rock.”

Replace by: **Lanes Rocks** with a least depth of 4 m (13 ft) are located about 3.4 miles ENE of Round Head. Two isolated rocks lying 0.3 mile apart are located about 2.5 miles ENE of Round Head. There is a least depth of 6.4 m (21 ft) over the east rock and 8.7 m (29 ft) over the west rock.

(N2020-02.5)

Chapter 5 – Delete paragraph 155

Replace by: 155 The area bounded by the Storehouse Islets, Turr Islets and Little Fogo Islands are rock and shoal infested. The chart is best consulted in this area; **caution** is advised. **Mile Islet** 3.7 m (12 ft) in elevation is situated 1.5 miles SE of the NE end of the largest Storehouse Islet. A shoal with a least depth of 4.1 m (13 ft) is charted 0.3 mile WNW of Mile Islet. A rock, drying 0.9 m (3 ft) is located 1.5 miles NNE of Mile Islet. **Lotts Rock** with a least depth of 3.3 m (11 ft) lies 1.7 miles NNW of Mile Islet.

(N2020-02.6)

Chapter 5 – Adjacent to paragraph 155, add a caution pictograph.

(N2020-02.7)

SECTION 4 – SAILING DIRECTIONS AND SMALL CRAFT GUIDE CORRECTIONS

Chapter 6 – Delete paragraph 163

Replace by: 163 The *Glovertown Marina* operates from May to October and is located on the SW shore of Middle Arm, about 0.2 mile SE of the previously mentioned wharf and boat launching ramp. The marina is protected by two stone breakwaters. A **light** (439.23) is shown from a mast on the outer end of the east breakwater. It can accommodate boats up to 15 m (50 ft) and consists of 89 berths. The berths consist mainly of floating wharves and a fixed wharf. Gasoline, diesel fuel, fresh water, washrooms, showers, wireless internet and laundry facilities are available. Electricity in the form of 30 and 50 amp service is available. A 50 ton travelift and storage area is located at the marina. Propane, provisions and marine supplies are available from stores near the marina.

(N2020-02.8)

Chapter 6 – Delete paragraph 242

Replace by: 242 A *Canadian Coast Guard* inshore rescue boat, 7.5 m (25 ft) long is stationed at Headquarters Wharf in Terra Nova National Park and is available for **search and rescue** in Bonavista Bay 24 hours each day from mid-May to mid-September. Its area of responsibility covers all waters of the southwestern portion of Bonavista Bay as far seaward as a line joining Cape Bonavista and the Wesleyville Public **wharf**. Contact can be made on channel 16 (156.8 MHz), through MRSC St. John's at 709-772-5151, 1-800-563-2444, via the nearest coastal radio station or by any other available means.

(N2020-02.9)

INDEX

Delete: Gull Rock (Little Fogo Islands), C5/P155

(N2020-03.0)

ATL 102 — Newfoundland, East and South Coasts, Second Edition, 2008

Inside front and back covers – after, “1-800-563-2444”

Add: 1-709-772-5151

(N2020-03.1)

Chapter 1 – After paragraph 305

Insert: 305.1 *Canadian Coast Guard Lifeboat, CCGS Sacred Bay*, call sign CGB3254 is stationed close north of the previously described Public piers at Old Perlican. The station operates 24 hours per day from May to December, and maintains a daily radio watch from 0830 to 1630 local time on channel 16 (156.8 MHz) and channel 51 (2182 kHz). Contact can be made through MRSC St. John's at 709-772-5151, 1-800-563-2444, via the nearest coastal radio station or by any other available means.

(N2020-03.2)

MONTHLY NOTICES TO MARINERS
EASTERN EDITION 06/2020

SECTION 4 – SAILING DIRECTIONS AND SMALL CRAFT GUIDE CORRECTIONS

Chapter 1 – Adjacent to paragraph 305.1, add lifesaving station pictograph.

(N2020-03.3)

Chapter 2 – Delete paragraph 160

Replace by: 160 A *Canadian Coast Guard* inshore rescue boat, 7.5 m (25 ft) long is stationed at Long Pond and is available for **search and rescue** 24 hours each day from mid-May to mid-September. Its area of responsibility covers all waters of Conception Bay as far seaward as a line joining Cape St. Francis and Split Point. Contact can be made on channel 16 (156.8 MHz) or through MRSC St. John's at 709-772-5151, 1-800-563-2444, via the nearest coastal radio station or by any other available means.

(N2020-03.4)

Chapter 6 – Delete paragraph 42

Replace by: 42 *Canadian Coast Guard Lifeboat, CCGS W. Jackman*, call sign CG3086 is stationed at the Canadian Coast Guard Search and Rescue Base located about 0.1 mile west of the south end of Simmons Island. The station maintains a daily radio watch from 0830 to 1630 local time on channel 16 (156.8 MHz) and channel 51 (2182 kHz). Contact can be made through MRSC St. John's at 709-772-5151, 1-800-563-2444, via the nearest coastal radio station or by any other available means.

(N2020-03.5)

ATL 103 — Newfoundland, Southwest Coast, Second Edition, 2010

Inside front and back covers – after, “1-800-563-2444”

Add: 1-709-772-5151

(N2020-03.6)

Chapter 1 – Paragraphs 64, 65, 72, 114, 116

Delete: “and whistle”

(N2020-03.7)

Chapter 1 – Paragraph 75

Delete: “whistle”

Replace by: bell

(N2020-03.8)

Chapter 1 – Paragraph 117

Delete: “whistle”

(N2020-03.9)

Chapter 3 – After paragraph 129

Insert: 129.1 Marine farms and associated vessel traffic may be encountered in the vicinity of Devil Bay, Little Bay and Rencontre Bay; **caution** is advised.

(N2020-04.0)

MONTHLY NOTICES TO MARINERS
EASTERN EDITION 06/2020

SECTION 4 – SAILING DIRECTIONS AND SMALL CRAFT GUIDE CORRECTIONS

Chapter 3 – Adjacent to paragraph 129.1, add a caution pictograph

(N2020-04.1)

Chapter 4 – Delete paragraph 92

Replace by: 92 *Canadian Coast Guard Lifeboat, CCGS W.G. George*, call sign CG3064 is stationed about 0.1 mile SE of the previously described fish plant wharf at Short Reach and operates within a 100 mile radius. The station maintains a daily radio watch from 0830 to 1630 local time on channel 16 (156.8 MHz) and channel 51 (2182 kHz). Contact can be made through MRSC St. John's at 709-772-5151, 1-800-563-2444, via the nearest coastal radio station or by any other available means.

(N2020-04.2)

Chapter 5 – Paragraph 23

Delete: "whistle"

Replace by: bell

(N2020-04.3)

ATL 105 — Cape Canso to Cape Sable (including Sable Island), Second Edition, 2014 —

Chapter 2 — Paragraph 34, after "...circular tower on the east side of the island."

Delete: "A **fog signal** of...horn near the light."

(A2020-005.1)

ATL 106 — Gulf of Maine and Bay of Fundy — Yarmouth to Minas Basin, First Edition, 2001

Chapter 4 — Paragraph 37, after "...**buoy** JB (145.4) is moored close"

Delete: "SW"

Replace by: S

(A2020-006.3)

ATL 108 — Gulf of St. Lawrence (Southwest Portion) — Northumberland Strait, First Edition, 2006

Chapter 3 — Paragraph 127, after "Starboard hand **light**..."

Delete: "and whistle"

(A2020-008.7)

Chapter 4 — Paragraph 106, after "Fairway light and whistle **buoy**"

Delete: "EE"

Replace by: EG

(A2020-008.8)

ATL 109 — Gulf of St. Lawrence, (Northeast Portion), First Edition, 2006

Inside front and back covers – after, "1-800-563-2444"

Add: 1-709-772-5151

(N2020-04.4)

SECTION 4 – SAILING DIRECTIONS AND SMALL CRAFT GUIDE CORRECTIONS

Chapter 3 – Delete paragraph 74

Replace by: 74 *Canadian Coast Guard Lifeboat, CCGS Cape Norman*, call sign CKO372 is stationed at the main Public wharf at Port au Choix. It operates primarily in the area from Cow Head, north to Cape Bauld. The station operates 24 hours per day from May to December, and maintains a daily radio watch from 0830 to 1630 local time on channel 16 (156.8 MHz) and channel 51 (2182 kHz). Contact can be made through MRSC St. John's at 709-772-5151, 1-800-563-2444, via the nearest coastal radio station or by any other available means.

(N2020-04.5)

Chapter 3 – Paragraph 88, last line

Add: A wreck at a depth of 21 feet (6.3 m) is located about 0.2 mile ESE of Montaignac Rock; **caution** is advised.

(N2020-04.6)

Chapter 3 – Before paragraph 132

Delete: “4658”

Replace by: 4881

(N2020-04.7)

Chapter 3 – Before paragraph 167

Delete: “Chart 4661”

Replace by: *Charts 4661, 4881*

(N2020-04.8)

Chapter 4 – Before paragraph 1

Delete: “Chart 4661”

Add: *Charts 4661, 4881*

(N2020-04.9)

Chapter 4 – Before paragraph 4

Delete: “Chart 4653”

Replace by: *Charts 4653, 4881*

(N2020-05.0)

Chapter 4 – Before paragraph 5

Insert: *Chart 4653*

(N2020-05.1)

SECTION 4 – SAILING DIRECTIONS AND SMALL CRAFT GUIDE CORRECTIONS

Chapter 4 – Delete paragraph 43

Replace by: 43 *Canadian Coast Guard Lifeboat, CCGS Cape Fox*, call sign CKO371 is stationed at Lark Harbour. It operates primarily in the area from Port aux Basques, north to Cow Head. The station operates 24 hours per day from May to December, and maintains a daily radio watch from 0830 to 1630 local time on channel 16 (156.8 MHz) and channel 51 (2182 kHz). Contact can be made through MRSC St. John's at 709-772-5151, 1-800-563-2444, via the nearest coastal radio station or by any other available means.

(N2020-05.2)

ATL 120 — Labrador, Camp Islands to Hamilton Inlet (including Lake Melville), First Edition, 2004

Inside front and back covers – after, “1-800-563-2444”
Add: 1-709-772-5151

(N2020-05.3)

ATL 121 — Labrador, Hamilton Inlet to Cape Chidley (including Button Islands and Gray Strait), Second Edition, 2016

Inside front and back covers – after, “1-800-563-2444”
Add: 1-709-772-5151

(N2020-05.4)

CEN 301 — St. Lawrence River, Montréal to Kingston, Second Edition, 2010 —

Chapter 4 — After paragraph 45

Insert: 45.1 ***Anchorage*** — *A designated anchorage marked by buoys is on the west side of the vessel route abreast the turn at Whaleback Shoal.*

(C2020-008.1)

MONTHLY NOTICES TO MARINERS
EASTERN EDITION 06/2020

SECTION 5 – LIST OF LIGHTS, BUOYS AND FOG SIGNALS CORRECTIONS

The amendments are highlighted and deletions are crossed out. For general and region-specific information on the List of Lights, click on the following links: [Newfoundland and Labrador Coast](#), [Atlantic Coast](#), [Inland Waters](#) and [Pacific Coast](#).

No.	Name	Position ----- Latitude N. Longitude W.	Light Characteristics	Focal Height in m. above water	Nomi- nal Range	Description ----- Height in meters above ground	Remarks ----- Fog Signals
-----	------	--	--------------------------	--	-----------------------	--	---------------------------------

ATLANTIC COAST

BAY OF FUNDY, N.B. (LL 5 – 114, 145 – 157)

10.4 <i>H4064</i>	<i>Long Ledge light and bell buoy XK4</i>	SW. of White Head. 44 36 56.0 066 44 28.8	Q R 1s	Red, marked "XK4".	Year round.
							Chart:4340 Edn 06/20 (F20-020)

155 <i>H4064</i>	Alma	On outer end of public wharf. 45 36 00.0 064 56 37.0	Iso R 4s	4	Pipe swing pole, red and white triangular daymark. 6.0	Year round.
							Chart:4337 Edn 06/20 (F20-024)

NOVA SCOTIA, SOUTHWEST COAST (LL 271 – 300.5)

283 <i>H3806</i>	Peases Island	On S. point of one of the Tusket Islands. 43 37 42.6 066 01 34.9	LFI W 6s	16.0	9	White cylindrical tower with red top. 11.5	Flash 2 s; eclipse 4 s. Visible from all points of approach from southward; also through Schooner Passage and Ellenwoods Channel. Operates at night only. Year round.
							Horn - Blast 3 s; sil. 3 s; blast 3 s; sil. 51 s. Omnidirectional.
							Chart:4244 Edn 06/20 (F20-023)

284 <i>H3817</i>	Frenchman Point	On rock, SW. of point. 43 38 07.2 066 00 59.4	Iso R 2s	5	Square skeleton tower, red and white rectangular daymark. 6.1	Two daymarks one facing 281° and one facing 101°. Flash 1 s; eclipse 5 s. Operates at night only. Year round.
							Chart:4244 Edn 06/20 (F20-022)

GULF OF ST. LAWRENCE (LL 883.2 – 940.3, 1169.1 – 1426, 1477.5 – 1584)

1266	<i>Miscou Flat West Cardinal light and bell buoy EAE</i>	NW. of Goose Lake. 47 56 54.2 064 38 21.6	Q(9) W 15s	Yellow-black-yellow, marked "EAE".	(Winter spar.) Buoy may be repositioned due to shifting channel. Seasonal.
							Chart:4913 Edn 06/20 (G20-031)
1276.2	<i>Shippegan North Channel light and whistle buoy EG</i>	47 53 14.2 064 45 47.6	Mo(A) W 6s	Red and white vertical stripes, marked "EG".	(Winter spar.) Buoy may be repositioned due to shifting channel. Seasonal.
							Chart:4913 Edn 06/20 (G20-032)

MONTHLY NOTICES TO MARINERS
EASTERN EDITION 06/2020

SECTION 5 – LIST OF LIGHTS, BUOYS AND FOG SIGNALS CORRECTIONS

No.	Name	Position ----- Latitude N. Longitude W.	Light Characteristics	Focal Height in m. above water	Nomi- nal Range	Description ----- Height in meters above ground	Remarks ----- Fog Signals
-----	------	--	--------------------------	--	-----------------------	--	---------------------------------

PRINCE EDWARD ISLAND (LL 942 – 1084.7)

983.5	Spithead East Cardinal light buoy CJB	46 09 12.9 063 07 45.4	Q(3) W 10s	Black-yellow-black, marked "CJB".	Seasonal. Chart:4466 Edn 06/20 (G20-037)
-------	---	---------------------------	------------	-------	-------	--------------------------------------	--

INLAND WATERS

LAKE HURON (LL 768 – 813)

780	Goderich North Pier range	On N. pier. 43 44 46.6 081 43 50.0	F	R	10.0	15	Square skeleton tower, white daymark with orange vertical stripe. 8.2	Visible 015° on either side of line of range. Operates 24 h. Seasonal (in place year round).
781		086°30' 180.3 m from front.	F	R	18.8	Square skeleton tower, white daymark, orange vertical stripe. 15.2	Seasonal. Chart:2228 Edn 06/20 (D20-002)

CANADIAN COAST GUARD – MARINE INFORMATION REPORT AND SUGGESTION SHEET

Name of Ship or Sender: Date:

Address of Sender:
Street # Street Name

Town / City: Prov / State: Postal Code / Zip Code:

Tel / Fax / E-mail address of sender:

Observation Date: Time (UTC):

Geographical Position:

Coordinate Position: Lat: Long:

Position Method: ☐ DGPS ☐ GPS with WAAS ☐ GPS ☐ Radar ☐ Other

Horizontal Datum Used: ☐ WGS 84 ☐ NAD 27 ☐ Other

Estimated Position Accuracy:

Chart #: Datum: ☐ NAD 27 ☐ NAD 83

Chart Edition: Last Correction applied:

Publications affected (Quote edition and page number):

*Full details (Attach additional sheets as necessary):

Mariners are requested to notify the responsible authorities when new or suspected dangers to navigation are discovered, changes are observed in aids to navigation, or corrections to publications are seen to be necessary.

In the case of new or suspected dangers to navigation, it is important that all details be given in order to aid with future investigations. Items of interest include heights, depths, physical description, type of bottom and equipment method used to position the item. It is helpful to mark details on the chart, which will be promptly replaced by the Canadian Hydrographic Service.

Reports should be made to the nearest Marine Communications and Traffic Services Centre (MCTS) and should be confirmed in writing to:

Leader, Notices to Mariners
Canadian Coast Guard
Department of Fisheries and Oceans
Montreal, QC H2Y 2E7
Notmar.XNCR@dfo-mpo.gc.ca

In the case of information concerning aids to navigation or the
List of Lights, Buoys and Fog Signals book.

OR

Director General, Canadian Hydrographic Service &
Oceanographic Services
Department of Fisheries and Oceans
Ottawa, ON K1A 0E6
CHSINFO@dfo-mpo.gc.ca

In the case of new or suspected dangers to navigation or
where corrections to "Sailing Directions" appear to be
necessary.

For general questions on Canadian Coast Guard programs or services, please send an e-mail to:
info@dfo-mpo.gc.ca