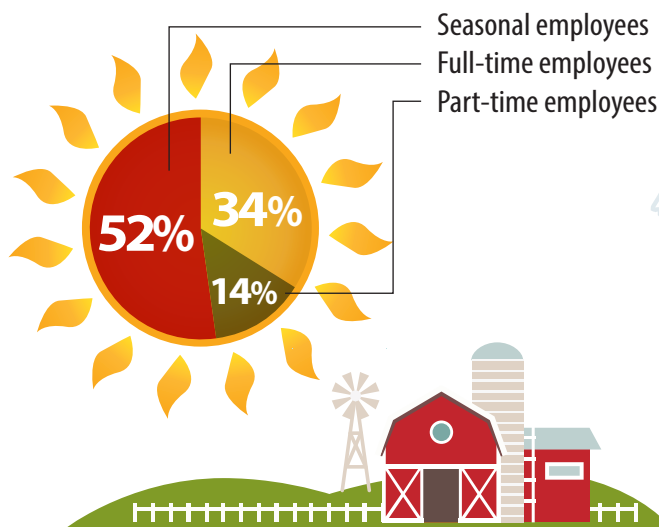
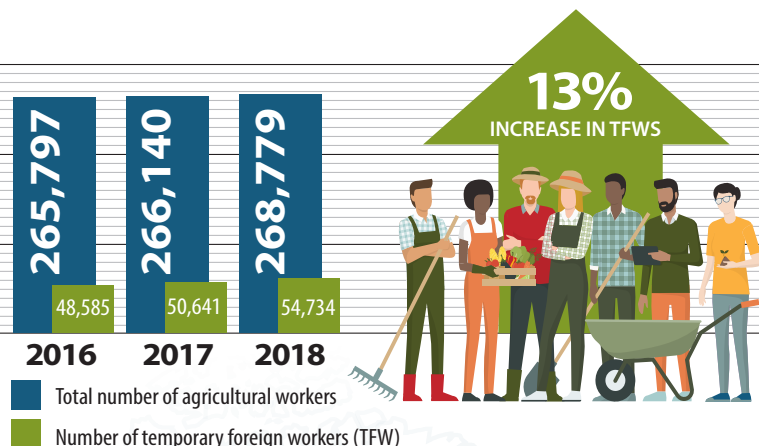
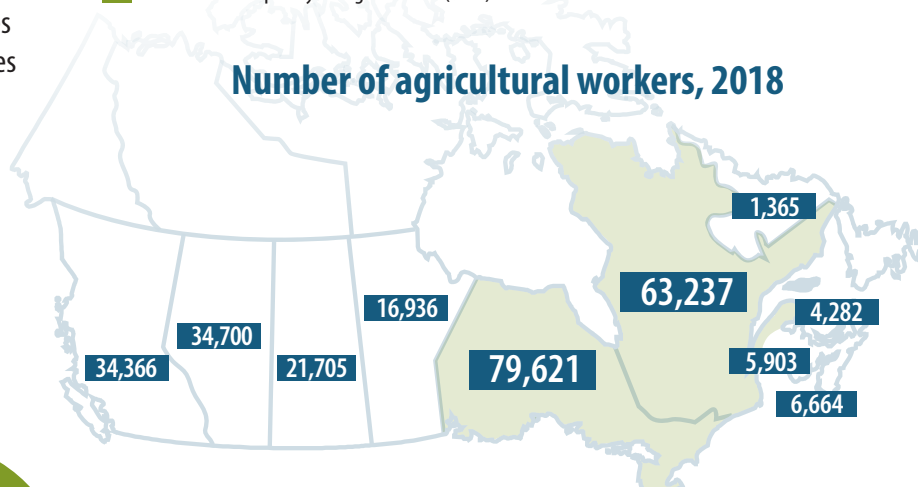


# Agricultural employees, 2016 to 2018

The total number of agriculture employees remained relatively steady between 2016 and 2018, while the **number of temporary foreign workers increased by 13%**.



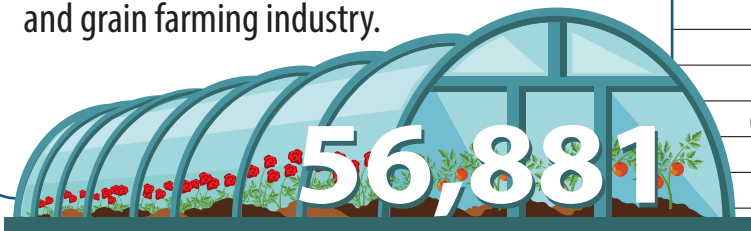
## Number of agricultural workers, 2018



In 2018, just over half of all agricultural workers were **seasonal employees**.

In 2018, more than half of all agricultural employees (53%) worked in **Ontario and Quebec**.

The greenhouse, nursery and floriculture production industry was the **biggest employer in 2018**, followed by the oilseed and grain farming industry.



## Number of agricultural employees, 2018

BEEF AND FEEDLOTS	14,267
DAIRY AND MILK	32,177
POULTRY AND EGG PRODUCTION	15,977
HOG AND PIG FARMING	10,740
OTHER ANIMAL PRODUCTION	11,034
VEGETABLE AND MELON FARMING	33,816
FRUIT AND TREE NUT FARMING	30,991
GREENHOUSE, NURSERY AND FLORICULTURE PRODUCTION	56,881
OILSEED AND GRAIN FARMING	45,253
OTHER CROP FARMING	17,643

In 2018, 43% of employees on farms with \$2,000,000 or more in revenue worked full-time, compared with 27% on farms with less than \$2,000,000 in revenue.

