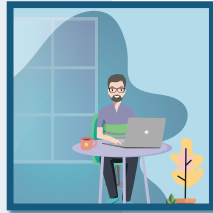


COVID-19 and the labour market in June 2020

In June, COVID-19 economic restrictions continued to ease in most provinces.

Between February and April

5.5 million Canadian workers were affected by the COVID-19 economic shutdown by either job loss or reduced hours.



By June

the number of affected workers was

down 43%

to

3.1 million

Compared with May, in June:

Almost **1 million** more

people were employed,

up 6%

823,000 fewer people

were absent from work for COVID-related reasons,

down 27%

167,000 fewer people

were unemployed,

down 6%

449,000 fewer people

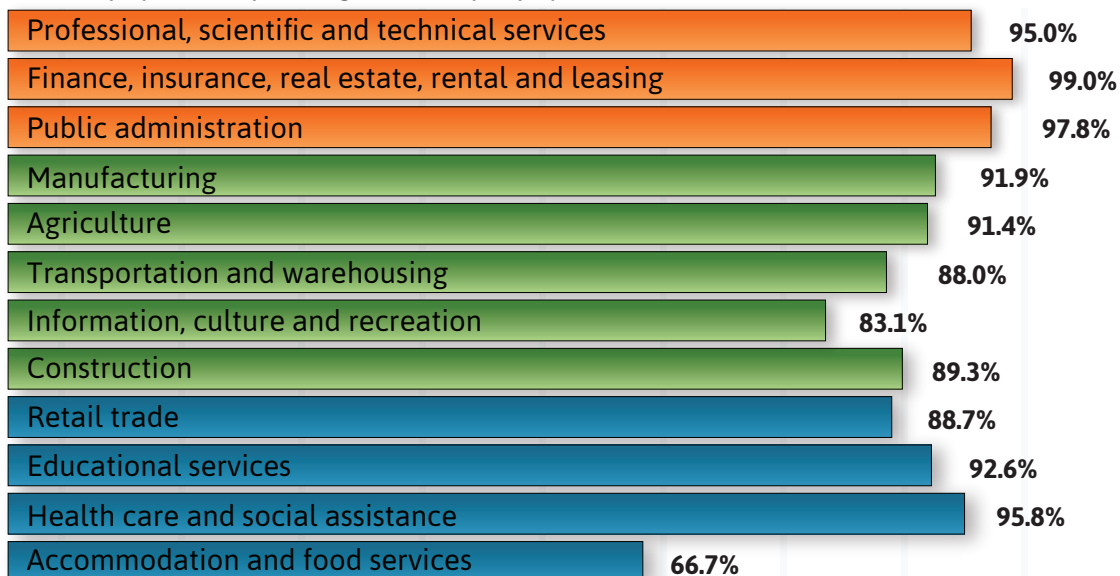
wanted a job but didn't look for one,

down 32%

Employment was closest to pre-COVID-19 levels in industries with the fewest jobs requiring close physical proximity between people

■ Low physical proximity
 ■ Moderate physical proximity
 ■ High physical proximity

June employment as a percentage of February employment



In all age groups, men were closer to pre-shutdown employment levels than women

15 to 24 years old



25 to 54 years old



55 years and older



Difference in employment in June compared with February