

Report of First Three Years

# Canadian National Egg Laying Contests

By F. C. ELFORD, Dominion Poultry Husbandman

AND

A. G. TAYLOR, B.S.A., Poultry Husbandman



A Corner of the Canadian Egg Laying Contest, Ottawa.

DOMINION OF CANADA  
DEPARTMENT OF AGRICULTURE

BULLETIN No. 38—NEW SERIES

POULTRY DIVISION  
DOMINION EXPERIMENTAL FARMS

Published by direction of the Hon. W. R. Motherwell, Minister of Agriculture  
Ottawa, 1924

630.4  
C212  
B 38  
n. s.  
1924  
c. 3



Agriculture  
Canada

Canadian Agriculture Library  
Bibliothèque canadienne de l'agriculture  
Ottawa K1A 0C5

# DOMINION EXPERIMENTAL FARMS BRANCH

## PERSONNEL

DIRECTOR, E. S. ARCHIBALD, B.A., B.S.A.

Dominion Animal Husbandman.....	G. B. Rothwell, B.S.A.
Dominion Field Husbandman.....	E. S. Hopkins, B.S.A., B.S.
Dominion Horticulturist.....	W. T. Macoun.
Dominion Cerealist.....	L. H. Newman, B.S.A.
Dominion Agrostologist.....	G. P. McRostie, B.S.A., Ph.D.
Dominion Chemist.....	Frank T. Shutt, M.A., D.Sc.
Dominion Bacteriologist.....	Grant Lochhead, Ph.D.
Dominion Botanist.....	H. T. Güssow.
Dominion Poultry Husbandman.....	F. C. Elford.
Dominion Tobacco Husbandman.....	F. Charlan, B.Sc.
Dominion Apiarist.....	C. B. Gooderham, B.S.A.
Chief Officer, Extension and Publicity.....	F. C. Nunnick, B.S.A.
Chief Supervisor of Illustration Stations.....	John Fixter.
Economic Fibre Specialist.....	R. J. Hutchinson.

### ALBERTA.

Superintendent, Experimental Station, Lacombe, Alta.....	F. H. Reed, B.S.A.
Superintendent, Experimental Station, Lethbridge, Alta.....	W. E. Fairfield, M.Sc.
Superintendent, Experimental Substation, Beaverlodge, Alta.....	W. D. Albright.
Superintendent, Experimental Substation, Fort Vermilion, Alta.....	Robt. Jones.

### BRITISH COLUMBIA.

Superintendent, Experimental Farm, Agassiz, B.C.....	W. H. Hicks, B.S.A.
Superintendent, Experimental Station, Summerland, B.C.....	W. T. Hunter, B.S.A.
Superintendent, Experimental Station, Invermere, B.C.....	R. G. Newton, B.S.A.
Superintendent, Experimental Station, Sidney, B.C.....	E. M. Straight, B.S.A.

### MANITOBA.

Superintendent, Experimental Farm, Brandon, Man.....	W. C. McKillican, B.S.A.
Superintendent, Experimental Station, Morden, Man.....	W. R. Leslie, B.S.A.

### SASKATCHEWAN.

Superintendent, Experimental Farm, Indian Head, Sask.....	N. D. McKenzie, B.S.A.
Superintendent, Experimental Station, Rosthern, Sask.....	W. A. Munro, B.A., B.S.A.
Superintendent, Experimental Station, Scott, Sask.....	M. J. Tinline, B.S.A.
Superintendent, Experimental Station, Swift Current, Sask.....	J. G. Taggart, B.S.A.

### NEW BRUNSWICK.

Superintendent, Experimental Station, Fredericton, N.B.....	C. F. Bailey, B.S.A.
---	----------------------

### NOVA SCOTIA.

Superintendent, Experimental Farm, Nappan, N.S.....	W. W. Baird, B.S.A.
Superintendent, Experimental Station, Kentville, N.S.....	W. S. Blair.

### PRINCE EDWARD ISLAND.

Superintendent, Experimental Station, Charlottetown, P.E.I.....	J. A. Clark, B.S.A.
---	---------------------

### ONTARIO.

Central Experimental Farm, Ottawa, Ont.	
Superintendent, Experimental Station, Kapuskasing, Ont.....	S. Ballantyne.
Superintendent, Experimental Station, Harrow, Ont.....	D. D. Digges, B.S.A., M.S.A.

### QUEBEC.

Superintendent, Experimental Station, Cap Rouge, Que.....	G. A. Langelier, D.Sc.A.
Superintendent, Experimental Station, Lennoxville, Que.....	J. A. McClary.
Superintendent, Experimental Station, Ste. Anne de la Pocatière, Que.....	J. A. Ste. Marie, B.S.A.
Superintendent, Experimental Station, La Ferme, Que.....	P. Fortier, Agr.
Superintendent, Tobacco Experimental Station, Farnham, Que.....	J. E. Montreuil, B.S.A.

## TABLE OF CONTENTS.

### GENERAL.

	PAGE
The Purpose of the Contests.....	3
The Development of the Contests.....	3
Housing and Yards.....	3
Changing the Contests.....	4
Contest Egg Weights.....	4
Record of Performance.....	4
Registration.....	4
Key to Varieties.....	5
Rules and Regulations.....	5
Report of the First Prince Edward Island Contest.....	7

### PART I—1919-20.

Contest Reports.....	8
Variety Production Averages.....	8
Tables showing Production Costs, for each Contest.....	17
Mortality.....	17

### PART II—1920-21

Contest Reports.....	18
Table showing Production Costs, for each Contest.....	31
Egg Weight Comparisons.....	32
Mortality.....	32

### PART III.

Contest Reports.....	33
Table showing Production Costs, for each Contest.....	46
Mortality.....	47

---

Summary (three years).....	47
Table Giving Averages.....	48
Record of Performance.....	48
Increased Yearly Production.....	48
Selection of Contest Pens Important.....	48
The Development of the Pullet.....	49
Registration Qualifications.....	49
Registration Table.....	50

OTTAWA  
F. A. ACLAND  
PRINTER TO THE KING'S MOST EXCELLENT MAJESTY  
1924



# CANADIAN NATIONAL EGG LAYING CONTEST

## REPORT OF THE FIRST THREE YEARS

AND OF THE PRELIMINARY CONTEST HELD ON PRINCE EDWARD ISLAND.

### GENERAL.

#### THE PURPOSE OF THE CONTESTS.

The purpose of the Canadian National Egg Laying Contest may be said to be threefold: (1) To stimulate interest in production. (2) To provide a medium for Record of Performance and Registration. (3) To secure data of an investigational nature.

To stimulate production was the primary motive, and laying contests should serve this purpose admirably, while the fund of data available through the contests (all of which are operated and controlled by the one division) is very considerable and when properly worked out should be of great value to the poultry industry.

The use of the Canadian National Egg Laying Contests as a medium for Record of Performance and later for registration has given the contests a very important place in the industry and this latter development will, without doubt, overshadow all others and become the real purpose of the contests.

#### THE DEVELOPMENT OF THE CONTESTS.

When the first Egg Laying Contest was started by the Experimental Farm, at the Charlottetown Experimental Station, P.E.I., November 1, 1918, it was not known just to what extent the project might develop. The interest taken in this first contest, however, was such that "The Canadian National Egg Laying Contest" was started November 1, 1919. Charlottetown Contest was repeated and new ones were started at Nappan, N.S., Cap Rouge, P.Q., Brandon, Man., Indian Head, Sask., Lethbridge, Alta., all of which were "Provincial" contests and the "Canadian" at the Central Farm, Ottawa, which was open to the world.

The New Brunswick at Fredericton, N.B., the Ontario at Ottawa, Ont., and the British Columbia at Agassiz, B.C., were added November 1, 1920, and in 1921 the same number of contests (nine Provincial and the Canadian) were conducted.

The first contest—the Prince Edward Island—was for eleven months only and was divided into two sections, "Heavy" and "Light" breeds, since which all contests have been for 52 weeks with no division as to light or heavy breeds.

#### HOUSING AND YARDS.

For the first two years all houses were the colony type, 10 by 12 feet, divided into two pens. When the British Columbia Contest was started a new type of house was used, a continuous house 16 feet deep divided into pens 6 feet wide. This has given good satisfaction, in that it is more economical from the labour standpoint, and saves expense in construction. Other houses of a similar type will be built for new contests.

Some of the contests are provided with yards, while others have none whatever. The first Prince Edward Island Contest had a yard for each pen, but these were done away with the second year and at the present time all contests east of the Great Lakes have no yards while those in Western Canada have yards.

There is less danger of contamination where no yards are used, but the question of whether confinement is good for birds which are to be bred at a later date is open to debate.

#### CHANGING THE CONTESTS.

The fifty-two-week contest leaves very little time to send out the contest birds and put in the incoming birds. In order to assist in this change over, the practice of sending home any birds which have stopped laying during the last weeks of the contest, was considered advisable. This practice proves of great assistance to those in charge of the work and in no way interferes with production. When these houses have been emptied of birds they are then cleaned and disinfected and prepared for the incoming birds. The ideal system would be to have double housing accommodation when the incoming contest birds could be housed without interfering with the birds which are finishing their contest year.

#### CONTEST EGG WEIGHTS.

Careful weighings are kept of the eggs laid by each bird throughout the contest.

The practice which is adopted is to weigh each individual egg at the commencement of the contest, the weight being recorded on the egg report for future reference. Only eggs averaging 20 ounces or over to the dozen are counted.

As the egg yield increases and eggs begin to run normal in size, weighings are taken once weekly, and always on the same day each week. All eggs are weighed the day after being laid and are therefore in the same degree of freshness so as to make weighings as uniform as possible.

#### RECORD OF PERFORMANCE.

Record of Performance "AA" and Advanced Record of Performance "AA" Certificates have been issued for the contest years 1919-20, 1920-21 and 1921-22.

The qualifications for Record of Performance "AA" certificates are the production of 150 to 224 eggs, which weigh 24 ounces per dozen, in fifty-two weeks. The bird must be typical of the breed she represents, and be free from Standard disqualifications. To obtain the Advanced Record of Performance certificate a bird must lay 225 eggs or upwards, and possess the other qualifications as above mentioned. A copy of a certificate form is appended (See last page).

#### REGISTRATION.

The granting of Registration certificates to qualified birds is a new feature in poultry work. This has been made possible by using the Egg Laying Contests as the medium through which females may qualify as regards production. The Canadian National Live Stock Records Office, Ottawa, issue all Registration certificates, thus placing the registration of poultry on an equal plane with that of Live Stock.

Full information upon registration may be received from the Secretary, Canadian National Poultry Record Association, Ottawa.

## KEY TO VARIETIES.

Throughout the report abbreviations for the breed or variety may be used and the following will help explain these:—

Barred Plymouth Rock—B.P.R. or B.R.  
 White Plymouth Rock—W.P.R.  
 Partridge Plymouth Rock—Par.P.R.  
 White Wyandotte—W.W.  
 Buff Wyandotte—B.W.  
 Silver Laced Wyandottes—S.W.  
 Single Comb Rhode Island Red—S.C.R.I. or R.I.R.  
 Rose Comb Rhode Island Red—R.C.R.I.R.  
 Single Comb White Leghorns—S.C.W.L. or W.L.  
 Single Comb Brown Leghorns—S.C.B.L.  
 Single Comb Black Leghorns—S.C.Bl.L. or Bl.L.  
 Rose Comb White Leghorn—R.C.W.L.  
 Rose Comb Brown Leghorn—R.C.B.L.  
 Single Comb Anconas—S.C.A. or Anc.  
 Rose Comb Anconas—R.C.A.  
 White Orpington—W.O.  
 Buff Orpington—B.O.  
 Blue Andalusians—B.A.  
 Silver Spangled Hamburgs—S.S.H.  
 Speckled Sussex—S.S.  
 Light Brahmas—L.B.  
 Canadians—Can.  
 Golden Canpines—G.C.

## RULES AND REGULATIONS.

A few changes have been made in the rules from year to year, a copy of those used in the third year of the Canadian National Egg Laying Contest, 1921-22, is given in detail. Amongst the changes that were made from time to time might be mentioned.

1. The change from eleven to twelve months after the preliminary contest.
2. The first contest was open to all, but when the Canadian started, it was open to the world and the Provincial was open to breeders within the province only.
3. Substitution of two birds only was allowed in the 1919-20 contest. This was changed to full substitution in later contests.
4. Record of Performance was added after the preliminary contest and registration was allowed for those birds laying 200 eggs and over starting with the 1921-22 contest birds.

The First Announcement contained the following:—

*Fees.*—The entry fee for the Canadian Egg Laying Contest at Ottawa is \$15. The entry fee for all Provincial contests is \$5. One-fifth of the entry fee must accompany the application, which must be received before August 15. The balance must be paid upon notification of acceptance of the entry, which will be by September 30. Should the entry not be accepted, the first payment will be refunded, but should the balance of the entry fee not be received by October 10, the application will be cancelled and the first payment forfeited. Failure to forward the pen when instructed, automatically forfeits the fee, and the application is cancelled. All cheques or money orders must be made payable at par in Ottawa, and made out to the "Accountant for Egg Laying Contests."

*Government Institutions.*—No fee will be charged for entries from departments or institutions receiving Government aid, nor will such entries be eligible for any prizes that may be offered, but they will be placed according to standing in all reports.



## EGG LAYING CONTESTS, 1921-22.

(Record of Performance AA.)

DOMINION EXPERIMENTAL FARMS.

## RULES AND REGULATIONS.

1. *Number.*—Each entry or pen shall consist of ten birds of a standard variety; each bird must be typical of the breed, and free from standard disqualifications as *laid down in the Standard of Perfection.*

2. *Substitution.*—Each contestant will be allowed to keep his pen of ten birds up to strength throughout the year. In the Canadian Contest, two reserves intended as substitutes, must accompany the original birds and will be housed with them in the pen. The ten birds for the original pen must be specified before the contest begins. Further substitution will be allowed as deaths occur. In the Provincial Contests substitutes will be accepted when deaths occur.

3. *Acceptance of Entries.*—The accommodation being limited, any entry may be refused and preference will be given,—

1. To breeders who have had their flocks entered in Record of Performance.
2. To breeders who enter birds bred by themselves.
3. The inspector's report of the flock.
4. The time of application.

4. *Inspection.*—Pens for which applications have been received *are subject* to inspection between August 15 and September 30, and those that prove to be amongst diseased flocks or kept under unsanitary conditions will be rejected. Those that do not promise to mature satisfactorily or those that may mature too early, may be rejected.

5. *Declaration of Health.*—Each entry of a pen, and each additional entry of a male or female, must be accompanied by a declaration stating that the bird or birds come from a flock that has not been affected with chicken-pox or tuberculosis for at least three months previously.

6. *Banding.*—The birds must be delivered at the contest, when notified by the management, express prepaid. This will be from the 15th to the end of October. Address the shipping crate plainly with the address of the contest as given in the announcement, and on each crate put your own address, *which must be the same as the address under which the application was made.*

7. *Rejection.*—The management reserves the right to refuse any entries, to reject and return to the owner, those which are in any way unsuitable for the contest, to destroy birds suffering from contagious or infectious disease, to clip the wings of any bird that may be troublesome, to reject all birds that show impurity of breeding or standard disqualification, and to return to the owner, pens from which eggs have not been received by December 15.

8. *Breeding.*—After February 21 the owner will be allowed to send a suitable male to mate with his pen, and any or all eggs from a mated pen, from March 1 to April 18, may, at the request of the owner, be shipped to him, or to any other single address which he may designate. *If he so desires, the owner may designate individual birds from which he wishes to have eggs for breeding.* ALL eggs will be shipped in bulk, but only to the one address throughout the breeding season. As the mating of the pens is optional, it will be noted that in the case of cost of production awards, a proportionate reduction of feed will be made in the pens having a male bird.

9. *Price.*—Eggs so shipped, will be charged for at a price to cover market value plus extra cost of handling, and will be shipped express collect. A bill will accompany each shipment, which must be paid, before the next shipment will be forwarded.

10. *Feeding and Housing.*—While in the contest the birds will receive the best of feed and care, and the system of feeding will be mixed grain in litter morning and evening, and dry mash in a hopper before them all the time. Green feed, grit, shell and beefscrap or green bone will also be supplied. They will be kept in houses having glass and cotton fronts.

11. *Eggs Counted.*—The contest shall be decided by the total number of marketable eggs laid by each pen. Exceedingly bad shaped eggs, soft shelled eggs or eggs weighing less than 20 ounces to the dozen, will not be given official credit.

12. *Disposal of Eggs.*—All eggs laid during the contest become the property of the Department of Agriculture, and those not shipped as breeding eggs will be sold at market prices.

13. *Reports.*—A report of the trap-nest weekly record of each bird, and a weekly and total record of each pen, will be issued at the close of each week. Copies of this report, along with a six months summary will be sent to each contestant, and to all papers that will publish them.

14. *The Return of the Birds.*—If no notification as to the return of the birds has been received by October 1, 1922, the birds on the completion of the contest will be sent by express collect, to the owner's address from which the shipment was made. Should any of the pens not be laying towards the close of the contest, and appear not likely to lay before the end, they will be returned earlier, so as to make room for birds entering for the next contest.

15. *Sale or Transfer.*—No recognition will be made of any sale or transfer of birds during the contest, nor shall any entry be withdrawn during the contest, except for reasons stated above.

16. *Record of Performance.*—All birds in the contests, not otherwise disqualified, whose eggs average 24 ounces to the dozen and that in fifty-two consecutive weeks lay 150 eggs, will receive certificates of Record of Performance AA, and those that lay 225 eggs, will receive certificates of Advanced Record of Performance AA.

17. *Responsibility.*—While every precaution will be taken, neither the management nor any official of the contest will be held responsible should loss occur.

18. *Final Decision.*—In all cases, the decision of the management shall be final.



# FIRST PRINCE EDWARD ISLAND EGG LAYING CONTEST. EXPERIMENTAL FARM, CHARLOTTETOWN.

## ENTRANTS AND TOTAL EGGS LAID

Name and address of owner	Variety	Total eggs
<b>HEAVY BREEDS</b>		
Adamson, T. J. Laurel, Que. ....	B. P. Rocks .....	1,286
Tait, W. E. B., Dorchester, N.B. ....	B. P. Rocks .....	1,340
Warren, H. L., 40 Oak Ave., St. Lambert, Que. ....	W. Wyandottes .....	1,108
Dowton, H. H., 195 Cowan Ave., Toronto. ....	R. I. Reds .....	1,175
Spiers, Jas., Tracadie, P.E.I. ....	W. Wyandottes .....	898
Reed, A. T., Rollingdam, N.B. ....	B. P. Rocks .....	1,237
Cain, Henry W., M.D., Falmouth, N.S. ....	R. I. Reds .....	828
Aird, P. E., 293 West Notre Dame, Montreal, Que. ....	W. Wyandottes .....	1,076
Neales, Molly, Hartland, N.B. ....	B. P. Rocks .....	1,103
Rodd, B., Brackley Point, P.E.I. ....	B. P. Rocks .....	866
Retson, William, Truro, N.S. ....	R. I. Reds .....	542
		11,489
<b>LIGHT BREEDS</b>		
Chapman, C. B., Amherst, N.S. ....	W. Leghorns .....	1,148
McDonald, Rev. J. J., Kinkora, P.E.I. ....	W. Leghorns .....	1,095
Horsfall, Bert, St. Lambert, P.Q. ....	W. Leghorns .....	1,103
Neale, William, Bear River, P.E.I. ....	W. Leghorns .....	1,019
McKinnon, Wm. J., Truro, N.S. ....	Anconas .....	1,028
Pickard, W. J., Charlottetown, P.E.I. ....	W. Leghorns .....	1,047
Agricultural College, Truro, N.S. ....	W. Leghorns .....	792
McMillan, Mrs. Gordon, North River, P.E.I. ....	W. Leghorns .....	957
Haslam, F. W. E., Springfield, P.E.I. ....	W. Leghorns .....	975
		9,177
		20,666

## FIRST PRINCE EDWARD ISLAND EGG LAYING CONTEST, 1918-19.

THE FOLLOWING TABLE GIVES DETAIL FOR ELEVEN MONTHS FOR EACH PEN

Pen No.	Scratch grain		Meal mixture		Beef scrap		Green feed		Grit		Shell		Charcoal		Total cost		Eggs laid		Value		Loss		Gain		Cost per doz.	
	lbs.	lbs.	lbs.	lbs.	lbs.	lbs.	lbs.	lbs.	lbs.	lbs.	lbs.	lbs.	lbs.	\$	\$	\$	\$	\$	\$	\$	\$	\$	\$	\$	\$	cts.
1.....	507	92-0	17-0	91	16-25	18-0	21	21-44	828	29 77	.....	8 33	31-0													
2.....	483	115-0	21-5	78	20-75	22-0	23	22 40	975	37 01	.....	14 61	27-4													
3.....	458	82-5	22-5	68	18-0	21-75	36	19 90	823	27 84	.....	7 94	28-9													
4.....	533	109-5	20-0	91	18-75	18-0	29	22 79	542	18 44	4 35	.....	50-4													
5.....	479	98-0	24-0	69	19-25	22-5	33	21 12	1,103	35 67	.....	14 55	22-9													
6.....	520	99-0	23-75	91	22-5	22-5	42	22 42	1,108	37 62	.....	15 20	24-2													
7.....	540	132-0	22-25	93	16-75	16-0	30	24 16	1,175	45 26	.....	21 12	24-6													
8.....	528	143-0	22-75	91	19-5	21-75	35	23 96	1,340	44 31	.....	20 35	21-6													
9.....	523	127-5	24-0	91	19-75	21-0	30	23 67	1,076	37 76	.....	14 09	26-4													
10.....	520	110-5	28-25	91	21-0	22-25	33	24 11	1,286	44 81	.....	20 70	20-1													
11.....	502	119-5	23-25	88	18-75	20-5	38	22 71	898	32 03	.....	9 32	30-2													
12.....	485	99-5	25-0	75	17-25	24-25	33	21 44	1,028	35 69	.....	14 25	24-0													
13.....	455	78-0	18-25	67	15-5	21-5	20	19 45	1,047	36 25	.....	16 80	21-6													
14.....	478	92-5	26-0	75	19-75	20-5	20	20 95	957	35 15	.....	14 20	26-1													
15.....	511	124-5	23-75	84	19-5	20-0	21	23 09	1,237	42 94	.....	19 85	20-1													
16.....	486	108-0	17-25	77	19-25	22-75	35	21 54	1,095	37 30	.....	15 76	24-0													
17.....	452	87-0	20-5	63	15-25	19-5	27	19 45	1,019	33 92	.....	14 47	20-1													
18.....	517	116-5	23-5	93	18-0	18-0	23	23 02	866	30 16	.....	7 14	31-8													
19.....	525	148-5	23-0	93	18-0	22-0	28	24 06	1,103	40 53	.....	16 47	25-2													
20.....	479	100-5	24-25	73	17-75	23-25	39	21 48	1,148	40 08	.....	18 60	21-6													
Total.....	9,981	2,183-5	450-75	1,642	371-5	418-0	596	443 16	20,654	722 54	.....	279 38	25-7													

## SUMMARY

AVERAGE PRODUCTION PER BIRD FOR ELEVEN MONTHS

Variety	Number of birds	Average eggs per bird
Barred Plymouth Rocks .....	50	145
White Wyandottes .....	30	128
White Leghorns .....	80	127
Anconas .....	10	127
Rhode Island Reds .....	30	106

Gross revenue per bird for 11 months .....	\$4.51
Average cost of feed per bird for 11 months .....	2.76
Net revenue over cost of feed per bird for 11 months .....	1.75
Average cost of eggs per dozen .....	25-7 c.
Average price of eggs (sale price) .....	41-8 c.
Average number of eggs laid per bird for 11 months .....	130

## PART I.

FIRST ANNUAL CANADIAN NATIONAL EGG LAYING CONTEST  
1919-20.

## NAMES OF CONTESTS.

The success of the preliminary contest held upon Prince Edward Island in 1918-19 demonstrated the wisdom of the project and consequently a series of contests known as "The Canadian National Egg Laying Contest" with "Record of Performance" as an additional feature, was started November, 1919, and contests were located as follows:—

- Canadian Egg Laying Contest,  
Experimental Farm, Ottawa, Ont.  
Prince Edward Island Egg Laying Contest,  
Experimental Station, Charlottetown, P.E.I.  
Nova Scotia Egg Laying Contest,  
Experimental Farm, Nappan, N.S.  
Quebec Egg Laying Contest,  
Experimental Station, Cap Rouge, Que.  
Manitoba Egg Laying Contest,  
Experimental Farm, Brandon, Man.  
Saskatchewan Egg Laying Contest,  
Experimental Farm, Indian Head, Sask.  
Alberta Egg Laying Contest,  
Experimental Station, Lethbridge, Alta.

## CANADIAN EGG LAYING CONTEST, OTTAWA.

## LIST OF ENTRANTS

With individual and total production 1919-20

Pen	Owner and Address	Variety	Bird No.										Floor	Total
			1	2	3	4	5	6	7	8	9	10		
1	J. R. Stork, St. Catharines, Ont.	B.R....	181	141	197	122	100	183	88	153	172	163	28	1,528
2	J. E. Rhoades, Ottawa, Ont.	B.R....	206	231	197	179	D 92	254	*197	D 88	D 78	D101	11	1,634
3	Vale P. Farm, Montreal, Que.	B.R....	170	199	188	136	168	75	169	223	91	141	20	1,580
4	C. E. Smith, Scotland, Ont.	B.R....	163	128	110	*99	112	198	193	207	76	126	47	1,459
5	Dr. J. A. Lambertus, Eganville, Ont.	B.R....	131	55	153	144	149	135	151	D 69	79	138	69	1,273
6	Laurel P. Farm, Rougemont, Que.	B.R....	195	108	57	152	*131	184	151	*192	156	213	21	1,560
7	Hope P. Farm, Ottawa, Ont.	B.R....	150	114	174	1	141	122	15	0	130	124	11	982
8	L. R. Guild, Rockwood, Ont.	B.R....	201	177	34	185	141	*160	69	129	73	170	42	1,381
9	W. J. Johnston, Meaford, Ont.	B.R....	151	107	75	190	144	199	224	184	161	*120	35	1,590
10	F. J. French, Newmarket, Ont.	B.R....	136	153	136	129	*180	57	216	197	191	165	50	1,610
11	F. J. Coldham, Kingston, Ont.	B.R....	272	109	131	117	141	107	118	119	133	97	48	1,392
12	Mt. Greystone P. Farm, Val Morin, Que.	B.R....	202	65	153	145	*160	140	*172	100	169	66	66	1,438
13	O'Brien P. Farm, Barryvale, Ont.	B.R....	13	147	86	123	100	127	*113	*112	125	124	80	1,150
14	Laurel P. Farm, Rougemont, Que.	B.R....	148	108	181	109	161	129	57	249	181	166	25	1,514
15	J. R. McMullin, Truro, N.S.	B.R....	206	135	168	162	141	128	*134	163	121	195	29	1,582

## CANADIAN EGG LAYING CONTEST, OTTAWA.

LIST OF ENTRANTS—Concluded

With individual and total production 1919-20—Concluded

Pen	Owner and Address	Variety	Bird No.										Floor	Total
			1	2	3	4	5	6	7	8	9	10		
16	Ludgate Farm, Eglington, Ont.	B.R....	127	77	153	167	208	120	177	* 63	D130	172	54	1,448
17	Mrs. E. Jolicoeur, Ottawa, Ont.	B.R....	145	185	138	100	138	104	81	166	109	178	39	1,383
18	E. C. Powell, Ottawa, Ont.	R.I.R..	207	189	*149	154	149	137	61	168	144	213	12	1,583
19	Sta. Avicole, Princeville, Que.	R.I.R..	46	D 22	139	94	195	115	D 19	77	161	D 98	135	1,101
20	J. A. Duncan, Brussels, Ont.	R.I.R..	165	108	128	* 71	*158	155	134	153	178	201	53	1,504
21	O'Brien P. Farm, Barryvale, Ont.	R.I.R..	89	114	132	98	86	* 57	41	* 47	D 93	70	85	912
22	W. F. Garland, Ottawa, Ont.	S.W....	119	*101	125	164	*107	161	158	D 88	98	131	30	1,282
24	H. W. Horsfall, St. Lambert, Que.	W.W....	* 5	221	168	128	173	* 90	220	194	126	191	21	1,537
25	L. R. Guild, Rockwood, Ont.	W.W....	114	185	217	221	*126	182	164	*188	149	77	32	1,655
27	E. Palmer, Westboro, Ont.	W.L....	84	142	124	113	135	*40	167	124	*81	103	17	1,130
28	Vale P. Farm, Montreal, Que.	W.L....	179	142	163	135	204	213	198	134	183	141	37	1,729
29	Norfolk Spec. Farm, St. Williams, Ont.	W.L....	119	157	161	D105	146	69	128	133	30	D 52	15	1,115
30	W. J. Richardson, Caledonia, Ont.	W.L....	112	98	165	*124	186	124	77	187	94	108	23	1,298
31	Walter Rose, Brussels, Ont.	W.L....	59	62	72	D 68	36	97	111	2	88	70	31	696
32	C. E. Smith, Scotland, Ont.	W.L....	134	116	159	142	103	190	128	195	97	136	21	1,421
35	S. P. Stewart, Portage la Prairie, Man.	W.L....	D 64	169	*142	155	D 49	156	152	D 70	D 96	*125	19	1,197
36	O'Brien P. Farm, Barryvale, Ont.	W.L....	135	117	*107	123	D176	200	* 72	119	160	207	16	1,432
37	O'Brien P. Farm, Barryvale, Ont.	W.L....	*138	212	179	142	152	*118	190	138	145	171	14	1,599
38	L. R. Guild, Rockwood, Ont.	W.L....	*208	*106	D121	102	72	157	139	118	92	114	39	1,268
39	R. W. Kemp, London, Ont.	W.L....	125	33	74	133	102	56	52	170	125	100	17	987
40	W. M. Alcorn, Hammond, B.C.	W.L....	87	*145	183	189	198	140	197	131	127	189	44	1,630
41	Larkin Farms, Niagara, Ont.	W.L....	147	123	214	164	83	118	103	205	150	129	14	1,450
42	C. E. Williamson, Woodroffe, Ont.	W.L....	183	93	147	177	146	156	19	136	* 98	171	35	1,361
43	Fletcher Bradley, Ottawa, Ont.	W.L....	* 40	175	D 66	193	D 9	D 33	D 19	123	116	84	28	826
45	Agr. College, Winnipeg, Man.	W.L....	148	157	131	139	121	108	76	131	86	182	25	1,304
46	Bradley W. Linscott, Brantford, Ont.	W.L....	192	205	175	156	95	100	107	170	208	114	17	1,539
47	G. S. Gooderham, Clarkson, Ont.	W.L....	163	188	196	150	130	106	170	96	143	129	16	1,487
48	Central Exp. Farm, Ottawa, Ont.	W.L....	135	64	130	121	156	120	*145	132	137	185	24	1,349
49	Central Exp. Farm, Ottawa, Ont.	B.R....	144	129	*129	175	121	141	116	162	137	119	29	1,402
Total.....													60,298	

\*—Substituted.

D—Dead but not substituted.

Pens Nos. 23, 26, 33, 34, 44 and 50 were disqualified and returned to their owners and are not reported.

## CANADIAN EGG LAYING CONTEST.

## TABLE SHOWING PRODUCTION COSTS

Feed with cost, eggs and value, gain and cost per dozen in 1919-20

Pen number	Scratch grain	Meal mixture	Beef scrap	Green feed	Grit	Shell	Char-coal	Other feeds	Total cost	Eggs laid	Value	Loss	Gain	Cost per dozen	
	lbs.	lbs.	lbs.	lbs.	lbs.	lbs.	lbs.	lbs.	\$	\$	\$	\$	\$	cts.	
1.....	609.0	135.0	36.0	364	33.0	41.0	7	15.5	33 80	1,528	84 71	.....	50 91	26	
2.....	619.0	174.0	38.0	364	30.0	42.5	8	15.5	35 73	1,634	96 21	.....	60 48	25	
3.....	602.0	150.0	35.0	364	30.0	40.0	8	15.5	33 88	1,580	86 68	.....	52 80	26	
4.....	614.0	160.0	35.75	364	30.0	38.0	8	15.5	36 90	1,459	78 51	.....	41 61	30	
5.....	607.0	164.0	37.25	364	30.0	39.0	6	15.5	34 19	1,273	71 29	.....	37 10	32	
6.....	607.0	160.0	38.75	364	30.0	40.75	8	15.5	34 92	1,560	90 64	.....	55 72	26	
7.....	580.0	164.0	38.5	364	30.0	37.25	8	15.5	33 65	982	54 10	.....	20 45	41	
8.....	621.0	176.0	33.75	364	28.0	28.5	7	15.5	34 61	1,381	77 89	.....	43 28	30	
9.....	603.5	178.0	35.25	364	30.0	36.0	7	15.5	35 04	1,590	93 65	.....	58 61	26	
10.....	617.5	219.0	31.75	364	30.0	43.0	7	15.5	36 99	1,610	87 92	.....	50 93	28	
11.....	599.5	187.0	33.5	364	30.0	37.5	7	15.5	34 87	1,392	76 14	.....	42 27	30	
12.....	607.5	154.0	34.75	364	29.0	35.5	9	15.5	34 40	1,438	79 41	.....	45 01	29	
13.....	608.5	141.0	34.25	364	30.0	33.0	6	15.5	33 78	1,150	58 60	.....	24 82	35	
14.....	613.0	186.0	30.75	364	30.0	44.5	9	15.5	35 46	1,514	82 89	.....	47 43	28	
15.....	594.0	155.0	34.0	364	31.0	37.5	7	15.5	33 9	1,582	86 25	.....	52 35	26	
16.....	613.0	165.0	33.25	364	30.0	32.5	8	15.5	34 81	1,448	80 21	.....	45 40	29	
17.....	612.0	168.0	32.25	364	30.0	37.0	7	15.5	34 91	1,383	75 53	.....	40 62	30	
18.....	601.0	151.0	29.5	364	30.0	30.0	6	15.5	33 64	1,583	90 14	.....	56 50	26	
19.....	564.5	153.0	24.25	364	30.0	26.0	5	15.5	33 14	1,101	64 43	.....	31 29	36	
20.....	549.0	124.0	29.5	364	29.0	35.0	9	15.5	31 14	1,504	84 64	.....	53 50	24	
21.....	575.0	134.0	29.25	364	30.0	29.0	5	15.5	32 36	912	48 82	.....	16 46	43	
22.....	527.0	87.0	29.75	364	36.5	28.5	8	15.5	29 26	1,282	70 25	.....	40 99	28	
24.....	546.0	149.0	26.0	364	26.0	34.0	6	15.5	30 74	1,537	83 71	.....	52 97	24	
25.....	564.0	151.0	22.0	364	26.0	35.5	7	15.5	31 79	1,655	94 17	.....	62 38	23	
27.....	524.0	116.0	26.25	364	30.0	34.0	8	15.5	29 35	1,130	59 92	.....	30 57	31	
28.....	551.0	120.0	30.75	364	30.0	37.5	7	15.5	31 01	1,729	98 18	.....	67 17	22	
29.....	472.0	96.0	25.75	364	30.0	30.0	6	15.5	26 65	1,115	61 03	.....	34 38	29	
30.....	524.0	124.0	27.25	364	28.0	30.0	4	15.5	29 60	1,298	70 29	.....	40 69	28	
31.....	498.0	62.0	24.75	364	30.0	22.0	7	15.5	26 02	696	36 62	.....	10 60	45	
32.....	544.5	171.0	32.75	364	30.0	33.5	7	15.5	32 38	1,421	79 27	.....	46 89	27	
35.....	452.0	92.0	30.25	364	28.0	32.75	7	15.5	25 72	1,197	67 09	.....	41 37	26	
36.....	526.0	125.0	30.25	364	28.0	31.0	6	15.5	30 32	1,432	80 42	.....	50 10	25	
37.....	525.0	138.0	28.25	364	30.0	34.5	6	15.5	30 39	1,599	90 82	.....	60 43	23	
38.....	518.0	123.0	30.0	364	30.0	28.5	5	15.5	29 57	1,268	71 41	.....	41 84	28	
39.....	528.0	86.0	32.75	364	30.0	27.0	5	15.5	28 54	987	54 08	.....	25 54	35	
40.....	536.5	152.0	30.75	364	30.0	34.0	5	15.5	31 33	1,630	93 11	.....	61 78	23	
41.....	517.0	120.0	28.5	364	30.0	24.0	5	15.5	29 24	1,450	81 95	.....	52 71	24	
42.....	534.5	135.0	73.25	364	30.0	31.5	6	15.5	30 49	1,361	73 48	.....	42 99	27	
43.....	536.5	138.0	31.75	364	30.0	29.0	6	15.5	30 49	826	43 64	.....	13 15	44	
45.....	513.0	121.0	30.75	364	30.0	27.0	7	15.5	29 28	1,304	72 43	.....	43 15	27	
46.....	539.0	149.0	29.25	364	30.0	31.0	6	15.5	29 34	1,539	85 22	.....	55 88	23	
47.....	542.5	109.5	29.25	364	28.0	37.0	7	15.5	30 09	1,487	81 14	.....	51 05	24	
48.....	502.0	104.0	28.0	364	30.0	23.0	4	15.5	27 74	1,349	74 22	.....	46 48	24	
49.....	603.0	142.0	33.75	364	27.0	29.0	8	15.5	33 38	1,402	77 74	.....	44 36	29	
Totals.....	24,740.5	6,208.5	1,376.5	16,016	1,307.5	1,467.7	5	295	682	1,404 84	60,298	3,348 85	.....	1,944 01	.....
Avg. (pen)...	562.3	141.1	31.2	364	29.7	33.3	5	6.7	15.5	31 93	1,370	76 11	.....	44 15	28



## PRINCE EDWARD ISLAND EGG LAYING CONTEST.

## LIST OF ENTRANTS

With individual and total production 1919-20

Pen	Owner and Address	Variety	Bird No.										Floor	Total
			1	2	3	4	5	6	7	8	9	10		
1	H. L. Warren, St. Lambert, Que.	W.W....	106	D 89	152	144	130	106	*115	140	D 93	103	37	1,215
2	J. B. Millman, Kensington, P.E.I.	B.R....	127	184	152	118	116	148	135	156	117	123	48	1,424
3	V. C. Fuller, Box 355, Amherst, N.S.	W.L....	144	139	*103	*146	164	144	117	143	141	104	14	1,359
4	H. L. Machon, Murray Harbour, P.E.I.	B.R....	D 71	129	158	180	100	104	111	186	146	156	62	1,403
5	E. Howatt, French River, P.E.I.	R.I.R..	88	D 45	59	96	164	0	128	158	119	133	32	1,032
6	J. S. Moar, Sommerville, P.E.I.	B.R....	135	111	109	126	108	83	107	82	52	44	17	974
7	R. G. Hamilton, Inverness, N.S.	S.W....	167	132	156	142	D 57	D 40	D 8	82	110	D 32	21	947
8	Mont Annear, Lower Montague, P.E.I.	B.R....	74	83	101	115	51	153	107	77	144	122	58	1,085
9	Jas. Cain, Cardigan, P.E.I.	B.R....	116	122	170	130	104	128	80	141	98	116	22	1,227
10	P. L. Campbell, Montague, P.E.I.	W.L....	135	142	137	131	176	92	151	119	138	149	23	1,393
11	F. W. E. Haslam, Springfield, P.E.I.	W.L....	149	0	86	102	104	103	90	112	99	108	4	957
12	B. Rodd, Brackley Pt. Rd. P.E.I.	B.R....	69	80	*110	46	147	86	128	91	191	124	20	1,092
13	J. R. McMullen, Truro, N.S.	S.S....	118	88	86	125	67	106	118	84	83	83	21	979
14	Mrs. Morty McLean, Montague, P.E.I.	B.R....	108	115	50	83	142	56	138	125	148	D 7	116	1,088
15	C. B. Chapman, Amherst, N.S.	W.L....	172	D 5	146	112	153	96	166	111	110	101	24	1,196
16	R. C. McLaren, New Perth P.E.I.	B.R....	91	108	101	104	128	139	98	144	120	142	42	1,217
17	F. C. LeLacheur, Murray Harbour, P.E.I.	W.L....	187	146	185	118	195	113	117	144	88	123	10	1,426
18	H. C. Fraser, Montague, P.E.I.	B.R....	103	118	104	146	141	66	42	145	186	* 77	25	1,153
19	Mrs. R. W. Bullpit, Cardigan, P.E.I.	W.L....	128	178	125	133	156	114	175	163	196	130	27	1,525
20	Jas Speirs, St. Avards, P.E.I.	W.W....	D 66	43	D 59	159	D119	147	*105	98	13	114	35	957
22	Charlottetown Exp. Sta., P.E.I.	W.L....	166	*123	152	D 90	151	121	147	120	123	105	27	1,325
21	Bert Horsfall, St. Lambert Que.	W.L....	134	95	135	42	97	148	106	109	125	144	18	1,153
Total.....													26	1,127

\*—Substituted.

D—Dead but not substituted.

## PRINCE EDWARD ISLAND EGG LAYING CONTEST, CHARLOTTETOWN.

TABLE SHOWING PRODUCTION COSTS

Feed with cost, eggs and value, gain and cost per dozen in 1919-20

Pen number	Scratch grain	Meal mixture	Beef scrap	Green feed	Milk	Grit	Shell	Total cost	Eggs laid	Value	Loss	Gain	Cost per dozen
	lbs.	lbs.	lbs.	lbs.	lbs.	lbs.	lbs.	\$		\$	\$	\$	cts.
1	486	316.5	14.5	91.5	380.25	24.5	29.75	36 44	1,215	52 52	.....	16 08	36
2	505	427.0	16.0	91.5	380.25	36.5	39.5	42 86	1,424	60 16	.....	17 30	36
3	448	303.5	14.0	91.5	382.5	37.0	42.5	35 90	1,359	55 53	.....	19 63	31
4	493	453.5	16.0	91.5	382.5	41.75	42.5	44 10	1,403	59 41	.....	15 31	38
5	474	358.5	15 25	91.5	382.5	27.5	27.0	38 02	1,032	44 83	.....	6 81	44
6	457	336.5	15.0	91.5	382.5	33.5	39.5	36 98	974	40 61	.....	3 63	45
7	349	285.5	16.0	91.5	382.5	22.0	24.0	29 60	947	35 55	.....	5 95	37
8	524	374.5	16.25	91.5	382.5	37.0	40.0	41 99	1,085	44 21	.....	2 22	46
9	525	408.5	16.0	91.5	382.5	26.5	32.5	42 60	1,227	53 63	.....	11 03	40
10	470	384.5	15.0	91.5	382.5	31.0	34.5	39 69	1,393	64 22	.....	24 53	34
11	519	315.5	15.5	91.5	382.5	30.0	36.25	38 87	957	44 36	.....	5 49	48
12	466	363.5	15.5	91.5	382.5	28.75	29.0	38 32	1,092	46 32	.....	8 00	42
13	433	304.5	14.25	91.5	382.5	22.0	24.5	34 38	979	40 47	.....	6 09	42
14	482	388.5	16.0	91.5	382.5	33.0	32.0	39 57	1,088	46 68	.....	7 11	44
15	455	360.5	16.0	91.5	382.5	31.5	30.5	37 61	1,196	48 34	.....	10 73	37
16	515	386.5	16.0	91.5	382.5	35.5	41.0	41 78	1,217	53 12	.....	11 34	41
17	474	353.0	15.0	91.5	382.5	35.0	26.5	38 37	1,426	58 46	.....	20 09	32
18	450	313.5	16.0	91.5	382.5	34.0	30.0	36 14	1,153	48 32	.....	12 18	37
19	480	295.5	16.0	91.5	382.5	28.25	32.5	35 42	1,525	66 33	.....	30 91	28
20	471	282.5	16.0	91.5	382.5	27.5	30.5	34 72	957	37 20	.....	2 48	44
21	397	327.5	13.5	91.5	382.5	35.5	44.5	34 23	1,153	49 55	.....	15 32	35
22	470	340.0	14.5	91.5	382.5	31.0	31.5	37 84	1,325	58 98	.....	21 14	34
Total	10,343	7,679.5	338.25	2,013.0	8,410.5	689.25	740.58	35 43	26,127	1,108 80	.....	273 37	.....
Average (pen)	470	349	15.5	91.5	382.5	31.5	33.5	37 92	1187.6	50 40	.....	12 48	39

## NOVA SCOTIA EGG LAYING CONTEST, NAPPAN.

## LIST OF ENTRANTS

With individual and total production 1919-20

Pen	Owner and Address	Variety	Bird No.										Floor	Total
			1	2	3	4	5	6	7	8	9	10		
1	J. R. Stork, St. Catharines, Ont.	B.R....	182	100	* 43	92	136	157	40	111	135	145	18	1,159
2	W. E. B. Tait, Dorchester, N.B.	B.R....	71	173	137	128	67	* 93	99	129	104	198	33	1,232
3	A. T. Reid, Rollingdam, N.B.	B.R....	174	180	220	232	* 86	166	177	150	183	168	23	1,759
4	S. H. Payne, W. Bathurst, N.B.	B.R....	D 83	90	95	110	103	124	126	98	95	D 28	15	967
5	A. Clegg, Amhurst, N.S.	B.R....	86	84	13	55	53	80	71	90	21	117	17	687
6	F. J. Taggart, Ottawa, Ont.	B.R....	74	99	119	118	98	173	147	59	113	181	14	1,195
7	N. Thacker, Bridgetown, N.S.	B.R....	112	110	149	114	143	160	167	154	159	89	40	1,397
8	N. W. Eveleigh, Sussex, N.B.	B.R....	131	135	106	108	165	164	144	135	138	124	18	1,368
9	F. W. Black, Amherst, N.S.	B.R....	128	113	143	122	151	164	120	103	73	150	31	1,298
10	Nasonworth P. Club, Fredericton, N.B.	B.R....	114	162	152	90	186	214	D 33	179	196	145	20	1,491
11	Leverville P. Club, St. Stephen, N.B.	B.R....	150	171	166	148	181	187	88	* 41	136	96	33	1,397
12	Elmsville P. Club, Elmsville, N.B.	B.R....	167	178	187	178	117	137	129	*124	*128	*104	15	1,465
13	R. A. Snowball, Chatham, N.B.	W.L....	167	146	123	152	158	169	142	146	157	146	9	1,515
14	C. B. Chapman, Amherst, N.S.	W.L....	103	120	100	72	2	71	86	119	89	102	16	880
15	F. H. Johnson, Bridgetown, N.S.	W.W....	72	202	156	80	46	59	55	51	67	139	17	944
16	F. Cochran, Amherst, N.S.	B.R....	110	86	91	*138	86	104	53	115	89	169	64	1,105
17	Fred Driscoll, Kentville, N.S.	W.W....	98	62	90	55	91	71	71	77	31	65	33	744
18	R. T. VanAmburg, Oxford, N.S.	W.L....	151	157	59	134	128	125	159	136	83	130	43	1,305
19	E. H. Morgan, Stanbridge, Que.	W.W....	186	80	114	146	133	110	116	126	199	91	10	1,311
20	F. Cochran, Amherst, N.S.	Anc....	62	109	78	132	115	* 57	113	93	120	108	20	1,007
Total														24,226

\*—Substituted.

D—Dead but not substituted.

## NOVA SCOTIA EGG LAYING CONTEST, NAPPAN.

TABLE SHOWING PRODUCTION COSTS

Feed with cost, eggs and value, gain and cost per dozen in 1919-20

Pen number	Scratch grain	Meal mixture	Beef scrap	Green feed	Milk	Grit	Shell	Total cost	Eggs laid	Value	Loss	Gain	Cost per dozen
	lbs.	lbs.	lbs.	lbs.	lbs.	lbs.	\$		\$	\$	\$	\$	cts.
1	583.0	350.0	42.75	28.25	48	18.5	36.0	38.45	1,159	53.96		15.51	39
2	575.5	409.0	76.5	27.5	48	17.25	31.25	43.25	1,232	56.66		13.41	42
3	594.0	337.0	51.25	32.0	48	12.5	33.5	39.12	1,759	80.16		41.04	27
* 4	553.5	271.5	39.0	29.0	48	18.0	31.5	33.15	967	43.46		10.31	41
* 5	496.0	454.5	67.0	29.0	48	18.0	31.5	39.49	687	29.86	9.63		69
6	587.0	298.0	68.5	22.25	48	14.5	30.5	39.10	1,195	52.14		13.04	39
7	578.0	336.0	85.0	22.25	48	21.5	35.5	41.49	1,397	62.66		21.17	35
8	590.5	270.0	49.5	30.75	48	20.5	36.5	36.47	1,368	62.97		26.50	31
9	589.0	300.5	57.0	27.0	48	22.5	31.5	38.06	1,298	57.90		19.84	35
10	589.0	364.0	64.0	28.25	48	15.5	28.5	40.61	1,491	67.49		26.88	32
11	582.0	371.0	56.25	29.0	48	18.5	44.5	41.08	1,397	64.60		23.52	35
12	595.0	327.0	58.5	30.25	48	17.5	31.0	39.85	1,465	66.53		26.68	32
13	522.0	296.5	25.0	27.75	48	10.5	22.5	32.53	1,515	68.84		36.31	26
*14	496.5	292.5	27.0	28.75	48	14.5	21.5	31.75	880	36.46		4.71	43
15	535.0	309.0	22.0	25.0	48	17.5	36.5	33.72	944	43.70		9.98	42
*16	561.0	298.5	51.0	28.75	48	14.0	26.25	36.53	1,105	49.57		13.04	39
*17	547.5	255.5	22.5	27.5	48	19.0	27.5	32.28	744	32.95		0.65	52
18	564.0	264.0	27.0	27.5	48	13.0	22.0	33.73	1,305	57.94		24.21	31
19	559.0	275.5	23.0	28.5	48	15.5	28.5	33.42	1,311	60.16		26.74	30
*20	507.0	236.0	22.0	28.0	48	12.5	24.5	29.94	1,007	44.18		14.24	36
Total	11,204.5	6,314.0	934.75	564.25	960	329.25	611.0	734.02	24,226	1,092.17	9.63	367.78	36
Average (pen)	560.2	315.7	46.7	28.2	48	16.4	30.5	36.70	1,211.6	54.60		17.90	36

\*Pen returned at end of 12th period.

## QUEBEC EGG LAYING CONTEST, CAP ROUGE.

LIST OF ENTRANTS

With individual and total production 1919-20

Pen	Owner and Address	Variety	Bird No.										Floor	Total
			1	2	3	4	5	6	7	8	9	10		
1	W. J. H. Lummis, Lakefield, Que.	B.R....	151	112	147	*190	171	134	D 71	182	*131	*175	4	1,468
2	J. R. Stork, St. Catharines, Ont.	B.R....	150	118	99	128	140	80	150	150	82	126	14	1,247
3	Sta. Avicole de Princeville, Que.	B.R....	D 32	76	121	55	* 8	162	*143	204	150	67	36	1,054
4	Mme Andre Soucy, Ste. Anne dela Pocatiere, Que	B.R....	96	93	82	73	D 36	107	67	87	130	129	3	903
5	Marcus Armitage, Sherbrooke, Que.	B.R....	145	151	80	114	154	120	121	* 76	100	125	59	1,245
6	Mrs. J. P. B. Casgrain, Val Morin, Que.	B.R....	151	128	45	126	41	45	159	D 42	98	90	49	974
7	G. F. Fournier, Montmagny, Que.	B.R....	136	66	110	90	151	112	130	141	73	* 83	24	1,116
8	Jean Rolland, St. Jerome, Que.	W.P.R..	29	24	D 34	136	* 97	* 58	59	67	111	96	41	752
9	Ed. Page et Freres, Sans Bruit, Que.	R.I.R..	54	96	155	*218	123	91	D 20	163	191	D 24	20	1,155
10	Joseph Albert, St. Eloi, Que.	R.I.R..	156	57	150	150	107	150	171	115	119	164	40	1,379
11	La Basse Cour St. Francois du Lac, Que.	R.I.R..	87	125	97	60	84	57	D 74	D 44	115	66	52	861
12	Louis Lessard, St. Joseph de Beauce, Que.	R.I.R..	101	55	131	130	64	62	101	106	128	89	28	995
13	Hermyle Lessage, La Trappe, Que.	R.I.R..	86	48	114	112	75	111	97	86	102	100	28	959
14	L. de G. Belzile, Rimouski, Que.	R.I.R..	33	D 27	* 40	82	74	72	93	60	* 24	51	1	557
15	Sta. Avicole de Princeville, Que.	W.L....	99	88	90	123	112	159	99	92	12	129	7	1,010
16	Larkin Farms, Niagara-on-the-Lake, Ont.	W.L....	150	151	112	35	62	D 65	150	128	150	164	2	1,169
17	Thos. Moir, St. Jerome, Que.	W.L....	142	116	108	127	123	146	168	160	150	98	23	1,361
18	Geo. Jackson, Sherbrooke, Que.	S.C.B.	L....	109	109	125	140	138	61	129	171	149	100	1,232
19	Mrs. D. G. Harrison, Lennoxville, Que.	R.C.B.	L....	151	72	117	80	68	119	93	151	129	150	1,140
20	J. W. Gauvin, Champigny, Que.	R.I.R..	86	108	159	112	116	*104	77	86	120	113	1	1,082
Total														21,659

\*—Substituted.

D—Dead but not substituted.

77029—3½



## QUEBEC EGG LAYING CONTEST, CAP ROUGE.

TABLE SHOWING PRODUCTION COSTS

Feed with cost, eggs, and value, gain and cost per dozen in 1919-20

Pen number	Scratch grain	Meal mixture	Beef scrap	Green feed	Milk	Shell	Char-coal	Total cost	Eggs laid	Value	Loss	Gain	Cost per dozen
	lbs.	lbs.	lbs.	lbs.	lbs.	lbs.	lbs.	\$		\$	\$	\$	cts.
1	732	81	28-0	22-5	210	32-5	38-75	33 69	1,468	78 46	.....	44 77	27
2	727	179	33-0	22-5	210	32-5	33 75	37 03	1,247	67 86	.....	30 83	36
3	702	111	42-5	22-5	266	21-5	18-0	33 77	1,054	57 61	.....	23 84	38
4	638	38	25-0	21-0	300	29-5	26-0	28 19	903	46 51	.....	18 32	37
5	726	104	36-0	22-75	266	30-5	6-0	33 89	1,245	65 65	.....	31 76	32
6	725	144	22-5	22-75	266	24-0	21-5	34 33	974	51 46	.....	17 13	42
7	747	125	43-5	21-5	266	25-5	9-5	35 66	1,116	58 80	.....	23 14	37
8	743	64	26-5	23-5	260	29-5	9-5	32 10	752	37 32	.....	5 22	52
9	657	162	39-5	18-75	266	24-0	13-0	32 87	1,155	61 64	.....	28 77	34
10	670	131	24-5	23-5	266	32-5	32-5	34 92	1,379	75 51	.....	40 59	30
11	718	166	24-5	24-0	262	25-0	3-75	34 59	861	44 05	.....	9 46	48
12	736	172	32-5	23-0	262	27-5	5-5	35 86	995	51 61	.....	15 75	43
13	731	175	26-5	23-5	264	28-0	34 75	36 54	959	53 62	.....	17 08	45
14	556	17	14-5	21-25	254	11-0	7-25	22 88	557	30 34	.....	7 46	49
15	611	67	19-25	21-0	264	15-25	6-0	26 76	1,010	53 25	.....	26 49	31
16	661	121	14-5	22-25	266	23-5	8-25	30 53	1,169	62 82	.....	32 29	31
17	648	118	22-5	21-75	210	23-0	13 75	30 56	1,361	72 73	.....	42 17	26
18	609	110	9-0	20-75	210	27-5	32-5	29 27	1,232	64 72	.....	35 45	28
19	575	51	20-5	21-0	264	25-0	20-0	25 73	1,140	61 71	.....	35 98	27
20	726	77	30-5	22-5	266	37-0	13-0	32 56	1,082	56 53	.....	23 97	36
Total	13,635	2,213	535-25	442-25	5,098	524-75	353-25	641 73	21,659	1,152 20	.....	510 47	.....
Average (pen)	682	110-5	26-75	22-0	255	26-0	17-5	32 09	1,083	57 61	.....	25 52	33

## MANITOBA EGG LAYING CONTEST, BRANDON.

## LIST OF ENTRANTS

With individual and total production 1919-20

Pen	Owner and Address	Variety	Bird No.										Floor	Total
			1	2	3	4	5	6	7	8	9	10		
1	Jos Woods, Brandon, Man.	B.R....	115	147	70	20	200	115	167	166	76	137	30	1,243
2	H. L. Farmer, Rapid City, Man.	B.R....	104	148	102	160	17	70	97	8	59	21	5	790
3	F. H. Johnson, Brandon, Man.	B.R....	69	91	25	150	162	5	40	21	87	3	10	663
4	F. E. Merritt, Melita, Man.	B.R....	106	128	134	159	191	102	103	131	98	145	20	1,317
5	Peerless Products Co., Brandon, Man.	Par P.R..	79	75	94	92	86	96	141	114	80	96	13	966
6	G. F. Thompson, Minnedose, Man.	W.W....	118	*142	134	217	140	131	175	223	208	262	15	1,765
7	Thos. Lund, Stonewall, Man.	W.W....	195	196	192	191	144	179	192	168	195	186	4	1,842
8	W. Gregg, Desford, Man.	W.W....	59	136	115	*112	178	156	152	110	156	141	46	1,361
9	J. N. Scott, Moorepark, Man.	S.L.W..	176	158	161	189	151	65	136	181	78	172	15	1,482
10	Arthur Howell, Brandon, Man.	W.L....	203	163	121	147	148	143	205	177	185	230	0	1,722
11	E. S. Kay, Karnac, Man.	W.L....	118	149	171	101	147	88	*138	129	181	145	0	1,367
12	G. F. Windsor Crystal, City, Man.	S. C. B. L....	126	111	151	138	190	155	141	168	145	152	2	1,479
13	David Russell, Two Creeks, Man.	B.O....	132	100	120	111	101	107	82	113	90	107	18	1,081
14	J. B. Ober, Brandon, Man.	B.O....	97	86	76	166	41	170	90	82	73	90	17	988
15	H. G. Osborn, 147 Ford St., Winnipeg, Man.	B.O....	92	74	140	129	137	93	54	107	108	134	14	1,082
16	W. H. Simington, Brandon, Man.	R.I.R..	*168	121	181	164	130	215	238	242	180	179	12	1,830
17	G. J. Gill, Broadview, S.	R.I.R..	80	109	91	6	98	86	80	107	9	15	7	688
18	W. H. Howe, 698 Arlington St., Winnipeg, Man.	S.C. Anc...	233	202	246	164	172	193	220	202	215	194	0	2,041
19	Kerr & McGuiness, Brandon, Man.	Camp..	19	9	98	98	86	100	60	109	110	90	8	787
20	Chambers & Maguire, Brandon, Man.	R.I.R..	110	92	75	7	66	91	106	77	63	103	15	805
Total														25,299

\*—Substituted.



## MANITOBA EGG LAYING CONTEST, BRANDON.

## TABLE SHOWING PRODUCTION COSTS

Feed with cost, eggs and value, gain and cost per dozen in 1919-20

Pen number	Scratch grain	Meal mixture	Beef serap	Green feed	Milk	Grit	Shell	Total cost	Eggs laid	Value	Loss	Gain	Cost per dozen
	lbs.	lbs.	lbs.	lbs.	lbs.	lbs.	lbs.	\$		\$	\$	\$	cts.
1.....	436	565	4-5	116	463	26-0	43-5	33 72	1,243	56 05	.....	22 33	33
* 2.....	394	629	4-5	114	451	35-0	42-0	33 83	790	34 14	.....	31	50
* 3.....	384	691	4-5	117	451	32-5	35-0	34 71	663	28 62	6 09	.....	63
4.....	397	690	4-5	117	461	25-0	50-0	35 07	1,317	61 36	.....	26 29	31
5.....	444	594	4-5	115	454	24-5	42-0	34 13	966	42 98	.....	8 85	42
6.....	443	649	4-5	117	527	25-5	56-0	35 59	1,765	84 35	.....	48 76	24
7.....	489	701	4-5	117	538	37-5	63-5	38 84	1,842	86 39	.....	47 55	25
8.....	431	654	4-5	117	497	21-5	39-0	35 14	1,361	61 70	.....	26 56	30
9.....	433	651	4-5	117	438	30-0	52-0	34 85	1,482	67 78	.....	32 93	28
10.....	424	619	4-5	115	505	30-5	41-5	34 14	1,722	77 40	.....	43 26	24
11.....	370	524	4-5	118	462	20-5	46-0	30 20	1,367	61 43	.....	31 23	26
12.....	399	457	4-5	119	465	22-5	36-5	29 64	1,479	65 04	.....	35 40	24
*13.....	412	533	4-5	119	451	25-0	35-0	31 38	1,081	46 14	.....	14 76	35
*14.....	375	600	4-5	117	492	18-0	29-0	31 71	988	39 43	.....	7 72	38
*15.....	352	631	4-5	118	451	31-5	43-0	32 92	1,082	44 05	.....	11 13	36
16.....	477	675	4-5	121	460	31-0	63-0	37 93	1,830	83 23	.....	45 30	24
17.....	433	696	4-5	118	451	27-5	44-0	36 47	688	29 35	7 12	.....	63
18.....	395	517	4-5	117	459	28-5	50-0	30 75	2,041	95 44	.....	64 69	18
*19.....	337	492	4-5	101	444	23-0	36-0	27 83	787	32 87	.....	5 04	42
*20.....	394	583	4-5	119	647	27-5	40-0	33 61	805	35 66	.....	2 05	49
Total.....	8,219	12,151	90-0	2,329	9,567	543-0	887-0	672 46	25,299	1,133 41	.....	460 95	.....
Average (pen).....	410-9	607-5	4-5	116-4	478-3	27-1	44-3	33 62	1,264-9	56 67	.....	23 04	32

\*Pen withdrawn at end of 12th period.

## SASKATCHEWAN EGG LAYING CONTEST, INDIAN HEAD.

## LIST OF ENTRANTS

With individual and total production 1919-20

Pen	Owner and Address	Variety	Bird No.										Floor	Total
			1	2	3	4	5	6	7	8	9	10		
1	T. Gibbs, Moose Jaw, Sask.	W.L.....	* 91	* 52	98	137	104	139	97	104	159	182	29	1,192
2	S. Merkley, Moose Jaw, Sask.	W.L.....	174	123	162	175	135	150	228	* 99	192	95	104	1,637
3	E. Anderson, Fleming, Sask.	W.L.....	* 97	88	69	107	113	96	55	56	69	133	48	931
4	F. J. Oliver, Stratford, Ont.	W.L.....	164	132	71	28	142	140	88	79	61	86	116	1,107
5	A. A. Moretoon, Saskatoon, Sask.	W.L.....	100	27	53	111	158	74	* 74	98	69	68	25	857
6	S. Merkley, Moose Jaw, Sask.	Bl.L.....	140	135	92	122	118	125	* 90	92	133	* 78	52	1,177
8	Nor. Sask. Orpington Club, Saskatoon, Sask.	W.O.....	62	144	*144	106	82	83	*103	128	*187	70	51	1,160
9	H. G. French, Moosemin, Sask.	Buff.W.....	39	57	116	* 64	66	111	21	35	66	148	96	819
11	W. W. Ashley, Saskatoon, Sask.	B.R.....	45	113	4	14	42	58	21	125	*157	81	28	688
12	L. H. Little, Dinsmore, Sask.	Par.R.....	12	83	55	61	24	31	61	48	4	87	38	504
13	University of Sask., Saskatoon, Sask.	R.I.R.....	121	136	158	141	178	D122	*126	125	125	113	32	1,377
14	F. Holmes, Saskatoon, Sask.	R.I.R.....	59	63	61	62	40	26	47	36	20	64	59	537
15	Parkview P. Yards, Saskatoon, Sask.	W.W.....	3	32	3	7	0	14	49	18	28	5	47	206
16	J. McCheane, Borden, Sask.	W.W.....	41	71	157	92	67	68	144	163	176	187	68	1,234
17	H. Moon, Saskatoon, Sask.	W.W.....	67	56	167	101	48	153	100	81	21	116	24	934
18	A. G. Mithell, Radisson, Sask.	R.I.R.....	107	*100	140	88	84	*112	105	94	92	66	50	1,038
19	J. Beatty, Rimbey, Alta.	W.W.....	77	* 23	68	118	17	106	* 68	93	D122	79	57	828
20	Mrs. Hanson, Tessier, Sask.	R.I.R.....	115	101	86	98	97	125	*135	95	72	146	53	1,123
Total.....														17,349

\*—Substituted.

D—Dead but not substituted.

## SASKATCHEWAN EGG LAYING CONTEST, INDIAN HEAD.

TABLE SHOWING PRODUCTION COSTS

Feed with cost, eggs and value, gain and cost per dozen in 1919-20

Pen number	Scratch grain	Meal mixture	Beef scrap	Green feed	Grit	Shell	Char-coal	Other feeds	Total cost	Eggs laid	Value	Loss	Gain	Cost per dozen
	lbs.	lbs.	lbs.	lbs.	lbs.	lbs.	lbs.	lbs.	\$		\$	\$	\$	cts.
1	649.0	245.0			16.5	16.5	18.0	42.5	28 08	1,192	52 67		24 59	28
2	575.0	295.5			17.5	17.5	18.0	33.0	28 29	1,637	73 28		44 99	21
3	618.0	217.5			22.5	14.25	19.5	29.5	26 12	931	39 47		13 35	34
4	593.0	227.0			17.5	19.0	16.5	28.5	25 95	1,107	46 81		20 86	28
5	610.0	206.5			18.0	17.5	19.0	34.0	25 87	857	35 51		9 64	36
6	613.0	225.0			17.5	19.5	16.0	33.0	25 91	1,177	50 03		24 12	26
8	673.0	196.5			18.0	13.0	15.0	27.0	27 92	1,160	46 69		18 77	29
9	602.5	201.5			19.5	14.0	17.0	42.5	25 22	819	33 88		8 66	36
11	665.0	165.0			19.5	18.0	15.0	40.0	25 94	688	32 51		6 57	45
12	627.5	191.0			20.0	14.0	22.0	42.5	26 02	504	20 76	5 26		62
13	618.0	211.0			16.5	13.0	12.5	36.0	26 51	1,377	43 06		16 75	23
14	499.5	183.0			17.0	13.0	12.0	42.5	21 92	537	38 02		16 10	48
15	357.0	122.0			11.0	8.0	11.5	33.0	14 70	206	15 79		1 09	86
16	682.5	239.0			22.5	14.0	21.5	32.5	28 57	1,234	54 61		26 04	28
17	676.5	219.0			26.0	13.0	24.5	37.5	28 56	934	40 49		11 93	36
18	656.0	236.0			23.5	17.0	15.5	33.0	27 25	1,038	44 62		17 57	31
19	677.5	222.0			19.5	14.5	21.5	20.5	28 29	828	36 32		8 03	41
20	630.0	215.0			13.5	10.5	8.5	20.0	25 89	1 123	50 61		24 72	28
Total	11,001.0	3,815.5	5		336.0	271.25	391.5	616.5	466 81	173 49	755 13	5 26	293 58	
Average (pen)	611.0	212.0			18.7	15.0	21.7	34.2	25 93	963.8	41 95		16 02	32

## ALBERTA EGG LAYING CONTEST, LETHBRIDGE.

## LIST OF ENTRANTS

With individual and total production 1919-20

Pen	Owner and Address	Variety	Bird No.										Floor	Total
			1	2	3	4	5	6	7	8	9	10		
1	Wm. Northcott, Jr., Beddington, Alta.	B.R....	236	*138	180	133	169	*106	204	181	77	205	29	1,658
2	Mrs. Jos. Woods, Brandon, Man.	B.R....	141	34	* 56	121	102	107	138	137	130	160	17	1,143
3	Mrs. A. R. Rhodes, Zelma, Sask.	B.O....	95	133	67	97	107	108	D 34	60	95	128	26	950
4	Herbert Gregory, Strathcona, Alta.	W.W....	*113	76	137	* 84	223	68	126	149	75	D 35	27	1,113
5	David Lockerbie, Kerrobert, Sask.	W.W....	41	99	114	* 40	135	53	66	117	102	168	29	964
6	Timms & Eastwell, Calgary, Alta.	B.W....	113	* 73	63	139	92	112	138	98	138	47	22	1 025
7	Ideal Poultry Yards, Saskatoon, Sask.	W.W....	147	100	178	137	152	160	190	141	112	143	17	1,477
8	F. H. Young & Sons, De Winton, Alta.	W.L....	106	63	140	131	63	132	148	135	128	142	12	1,200
9	S. H. Jones, Blaine Lake, Sask.	W.L....	88	150	153	192	129	140	125	D 74	172	184	8	1,415
10	Kerr & McGuiness, Brandon, Man.	G.C....	97	134	140	66	95	64	163	169	108	134	18	1,188
11	A. E. Hetherington, Kerrobert, Sask.	S.S.H..	126	121	143	85	121	142	155	67	127	112	31	1,230
Total														13,363

\*—Substituted.

D—Dead but not substituted.

## ALBERTA EGG LAYING CONTEST, LETHBRIDGE.

TABLE SHOWING PRODUCTION COSTS

Feed with cost, eggs and value, gain and cost per dozen in 1919-20

Pen number	Value of scratch grain fed	Value of meal mixture fed	Value of beef scrap fed	Value of green feed fed	Value of grit fed	Value of shell fed	Value of charcoal fed	Total cost of feed	Eggs laid	Value of eggs	Loss	Gain	Cost per dozen
	\$	\$	\$	\$	\$	\$	\$	\$		\$	\$	\$	cts.
1.....	22-27	6 89	1 96	2 92	0 19	0 52	0 20	34 95	1,658	80 37	.....	45 42	25
2.....	20 51	6 46	1 94	2 86	0 18	0 43	0 19	32 59	1,143	51 59	.....	19 00	38
3.....	20 62	6 42	1 94	2 92	0 18	0 43	0 19	32 72	950	42 46	.....	9 64	45
4.....	20 92	6 49	1 96	2 86	0 18	0 43	0 19	33 12	1,113	55 30	.....	22 18	38
5.....	20 93	6 23	1 97	2 86	0 18	0 42	0 20	32 79	964	41 20	.....	8 41	46
6.....	21 33	6 46	1 96	2 86	0 18	0 42	0 19	33 40	1,025	43 81	.....	10 41	45
7.....	21 97	6 79	1 96	2 86	0 19	0 45	0 19	34 43	1,477	61 37	.....	26 94	33
8.....	18 43	6 30	1 95	2 86	0 16	0 38	0 20	30 29	1,200	53 64	.....	23 35	33
9.....	18 39	6 42	1 96	2 86	0 16	0 42	0 20	30 42	1,415	67 68	.....	37 26	27
10.....	17 93	6 25	1 94	2 86	0 17	0 40	0 20	29 75	1,188	53 83	.....	24 08	32
11.....	15 40	5 72	1 94	2 86	0 16	0 32	0 20	26 60	1,230	53 16	.....	26 56	28
Total.....	218 70	70 43	21 48	31 58	1 93	4 62	2 15	351 06	13,363	604 41	.....	253 25	31

\*The report of this contest is not complete—Feed Reports for the 12th and 13th Periods being omitted, viz.—September 4—October 1 and October 2—October 29.

## TABLE GIVING PRODUCTION COST FOR EACH CONTEST

Average per pen (10 birds) feed consumed, cost, egg yield and cost of production for 1919-20

Contest	Scratch grain	Meal mixture	Beef scrap	Green feed	Milk	Grit	Shell	Char-coal	Other feeds	Total cost	Eggs laid	Value	Gain	Cost per dozen
	lbs.	lbs.	lbs.	lbs.	lbs.	lbs.	lbs.	lbs.	os.	\$		\$	\$	cts.
Canadian.....	562.5	141.0	31.2	364.0	.....	29.5	33.5	6.5	15.5	31 93	1,370.0	76 11	44 18	28.0
Pr. Edward Island.....	470.0	349.0	15.5	91.5	382.5	31.5	33.5	.....	.....	37 92	1,187.6	50 40	12 48	39.0
Nappan, N.S.....	560.2	315.7	46.7	28.2	48.0	16.4	30.5	.....	.....	36 70	1,211.6	54 60	17 90	36.0
Cap Rouge, Que.....	682.0	110.5	26.5	22.0	255.0	.....	26.0	17.5	.....	32 09	1,083.0	57 61	25 52	33.0
Brandon, Man.....	410.9	607.5	4.5	116.4	478.3	27.1	44.3	.....	.....	33 62	1,264.9	56 67	23 04	26.7
Indian Head, Sask.....	611.0	212.0	.....	.....	.....	18.5	15.0	21.5	34.2	25 93	963.8	41 95	16 02	32.0
Total.....	3,313.7	1,736.2	124.2	622.7	1,163.0	122.9	187.0	45.5	59.7	198 74	7,350.6	350 93	152 19	32.4
Average, per bird.....	55.2	28.9	2.4	12.4	29.0	2.4	3.1	1.5	2.9	3.3	122.5	5 84	2 53	32.4

## MORTALITY 1919-20 CONTESTS

	Pens	Deaths	Per cent
Canadian.....	44	64	14.5
Prince Edward Island.....	22	21	9.5
Nova Scotia.....	20	12	6.0
Quebec.....	20	24	12.0
Manitoba.....	20	4	2.0
Saskatchewan.....	18	20	11.1
Alberta.....	11	10	9.0
Total.....	161	155	9.5

NOTES.—The figures given above are for the number of pens that finished the contest year. In the Canadian Contest six pens were returned to their owners because of high death rate, and are not included in the above mentioned table. The per cent mortality was highest in the Canadian and lowest in the Manitoba Contest. The average mortality in all contests runs below the general flock average which is usually considered about 10 per cent.

Two causes for high death rate seem to be outstanding, viz.: reproductive system disorders and roup. The reproductive organ troubles were numerous, the outstanding one being prolapsis. Colds, which later develop into roup or canker, were quite common and being hard to exterminate usually exact a heavy toll from pens which become affected with this disease. Many pens were troubled with colds which seemed able to throw of the disease and although the production was very materially decreased the pen remained intact throughout the season.

In the First Canadian Contest six pens were so badly crippled by the loss of birds from roup that the remaining individuals were returned to their owners after the dangers from infection had been cleared away.



## PART II.

SECOND ANNUAL CANADIAN NATIONAL EGG LAYING CONTEST  
1920-21.

The Egg Laying Contests held in 1919-20 proving both popular and instructive the Department of Agriculture decided to extend the work, and November 1, 1920, a contest was started in every province in Canada, and the "Canadian Contest" was held at Ottawa. The total number of birds trapped during the year in these contests was 2,480. The names and locations of the contests were as follows:—

## CANADIAN CONTEST.

Canadian Egg Laying Contest,  
Experimental Farm, Ottawa, Ont.

## PROVINCIAL CONTESTS.

Prince Edward Island Egg Laying Contest,  
Experimental Station, Charlottetown, P.E.I.  
Nova Scotia Egg Laying Contest,  
Experimental Farm, Nappan, N.S.  
New Brunswick Egg Laying Contest,  
Experimental Station, Fredericton, N.B.  
Quebec Egg Laying Contest,  
Experimental Station, Cap Rouge, Que.  
Ontario Egg Laying Contest,  
Experimental Farm, Ottawa, Ont.  
Manitoba Egg Laying Contest,  
Experimental Farm, Brandon, Man.  
Saskatchewan Egg Laying Contest,  
Experimental Farm, Indian Head, Sask.  
Alberta Egg Laying Contest,  
Experimental Station, Lethbridge, Alta.  
British Columbia Egg Laying Contest,  
Experimental Farm, Agassiz, B.C.

## CANADIAN EGG LAYING CONTEST.

## LIST OF ENTRANTS.

With individual and total production 1920-21.

Pen	Owner and Address	Variety	Bird No.										Floor	Total
			1	2	3	4	5	6	7	8	9	10		
1	J. R. Stork, St. Catharines, Ont.	B.R....	*120	153	195	160	164	172	99	212	*127	* 87	.....	1,489
2	Dr. S. Lafortune, Gatineau Pt., Que.	B.R....	193	189	*134	*198	153	*177	125	116	151	148	.....	1,584
3	J. S. Greenshields, Toronto, Ont.	B.R....	155	158	*122	121	72	127	171	7	118	64	.....	1,115
4	C. E. Smith, Scotland, Ont.	B.R....	.....	111	155	158	101	145	165	158	87	3	.....	1,083
5	Mitchell Bros., Lansdowne, Ont.	B.R....	*103	95	D173	142	155	141	139	167	184	139	.....	1,438
6	M. T. Armitage, Sher- brooke, Que.	B.R....	184	116	*149	174	119	* 73	168	164	170	186	.....	1,512
7	J. R. McMullen, Truro, N.S.	B.R....	52	58	176	140	124	*193	D171	127	88	213	.....	1,342
8	W. E. B. Tait, Dorchester, N.B.	B.R....	185	*104	126	226	229	153	*149	259	208	195	.....	1,834



## CANADIAN EGG LAYING CONTEST.

## LIST OF ENTRANTS—Concluded

With individual and total production 1920-21—Concluded

Pen	Owner and Address	Variety	Bird No.										Floor	Total
			1	2	3	4	5	6	7	8	9	10		
9	W. J. Johnston, Meaford, Ont.	B.R.	170	202	*213	161	170	163	203	110	*216	221		1,829
10	F. J. French, Newmarket, Ont.	B.R.	147	133	141	*120	105	208	182	188	158	183		1,565
11	F. J. Coldham, Harrow-smith, Ont.	B.R.	133	154	121	158	171	127	*157	199	145	74		1,439
12	J. Campbell, Montreal West, Que.	B.R.	182	147	164	219	127	90	150	164	150	181		1,574
13	J. H. Thompson, Port Dover, Ont.	B.R.	176	141	*199	*189	180	149	96	206	159	69		1,564
14	R. H. Ashton, Morrisburg, Ont.	B.R.	*166	150	146	127	D 80	140	94	117	D127	144		1,291
15	A. C. Jones, Georgetown, Del., U.S.A.	B.R.	D 43	D 94	23	157	D151	D 31	*135	145	* 126	13		918
16	Ontario Agricultural College, Guelph, Ont.	B.R.	219	189	145	206	246	* 99	4	*145	171	*185		1,609
17	Neff Bros., Simcoe, Ont.	B.R.	102	108	103	161	*175	178	200	226	166	209		1,628
18	S. M. Bullard, Knowlton, Que.	B.R.	157	*147	*163	114	246	*168	159	204	228	*107		1,693
19	Exp. Farm, Ottawa, Ont.	B.R.	122	136	* 86	160	61	206	142	*151	* 55	136		1,255
20	Thos. Pewtress, Beaconsfield, Que.	R.I.R.	65	131	47	122	189	190	164	132	149	*160		1,349
21	S. G. McDermott, Montreal, Que.	R.I.R.	187	29	182	90	42	130	* 59	115	154	154		1,142
22	E. C. Powell, Ottawa, Ont.	R.I.R.	112	110	101	153	129	218	*127	149	85	D 56		1,240
23	J. W. Ewart, Moe's River, Que.	R.C.	128	136	*129	101	84	80	102	114	93	*120		1,087
24	Bert Horsfall, St. Lambert, Que.	R.I.R.	128	136	*129	101	84	80	102	114	93	*120		1,087
25	Exp. Farm, Sidney, B.C.	W.W.	228		D104	136	79	51	59	* 77	129	113		976
26	E. L. Ruddy, Pickering, Ont.	W.W.	*195	177	* 99	196	146	132	*179	218	80	176		1,598
27	Chas. G. Moynan, Lennoxville, Que.	W.W.	165	175	146	*100	110	154	99	108	*148	168		1,373
28	Alex. Scharr, Cummings Bridge, Ont.	W.W.	114	166	140	145	143	88	124	*104	167	64		1,255
29	J. S. Greenshields, Toronto, Ont.	W.O.	120	*101	*99	* 89	* 17	73	220	135	85	* 96		1,038
30	C. W. Robbins, Chilliwack, B.C.	B.O.	131	79	*121	207	108	142	138	94	103	* 44		1,167
31	N. H. Gamp, New Hamburg, Ont.	Anc.	137	153	194	188	178	182	*147	190	113	165		1,647
32	C. E. Smith, Scotland, Ont.	W.L.	134	D190	* 99	*103	163	*197	D143	152	* 81	* 38		1,300
33	J. Campbell, Montreal West, Que.	W.L.	177	183	234	126	D151	*116	182	147	120	130		1,566
34	A. Neal & Son, Stratford, Ont.	W.L.	153	*137	136	157	155	102	112	139	145	197		1,433
35	L. E. Ingoldsby, Coopers-town, N.Y.	W.L.	182	119	*193	246	225	191	217	211	214	*216		2,014
36	Dr. I. H. Ante, Richmond Hill, Ont.	W.L.	163	*171	204	151	*207	135	195	*176	178	* 50		1,630
37	Lewis N. Clark, Port Hope, Ont.	W.L.	194	191	167	*141	177	* 156	176	169	149	*149		1,669
38	R. H. Ashton, Morrisburg, Ont.	W.L.	D 86	128	160	163	133	* 86	D 45	* 61	138	91		1,091
39	Keith Merkley, Hammond, B.C.	W.L.	208	D 74	202	D109	195	187	218	D118	*115	228		1,654
40	W. M. Aicorn, Port Hammond, B.C.	W.L.	163	217	209	159	208	179	225	173	189	225		1,947
41	Thos. G. Delamere, Stratford, Ont.	W.L.	118	*148	204	128	*118	215	157	152	62	116		1,418
42	A. Seiling, Elmira, Ont.	W.L.	110	123	159	79	119	187	88	*144	* 92	109		1,210
43	Dr. J. A. Stewart, Montreal, Que.	W.L.	166	95	155	138	154	181	162	204	136	124		1,515
44	Ontario Agricultural College, Guelph, Ont.	W.L.	281	*193	207	252	*252	*208	173	*203	220	266		2,255
45	Manitoba Agricultural College, Winnipeg, Man.	W.L.	134	157	207	88	57	156	88	191	63	127		1,268
46	Dr. B. W. Linscott, Brantford, Ont.	W.L.	125	218	*168	153	187	D 40	108	D 77	*125	181		1,382
47	J. S. Greenshields, Toronto, Ont.	W.L.	167	201	188	134	126	141	* 37	188	* 82	141		1,405
48	W. J. Richardson, Caledonia, Ont.	W.L.	124	202	177	171	128	163	122	169	175	170		1,601
49	Exp. Farm, Ottawa, Ont.	W.L.	159	179	164	172	187	161	182	90	222	183		1,699
50	Exp. Farm, Ottawa, Ont.	W.L.	165	128	141	133	149	200	129	158	100	140		1,443
Total														72,578

\* Production of more than one bird.  
D Dead but not substituted.

## CANADIAN EGG LAYING CONTEST.

The consumption of feeds, total cost, eggs laid, value, gain and cost per dozen for fifty-two weeks, 1920-1921

Pen Number	Scratch grain	Meal mixture	Beef scrap	Green feed	Grit	Shell	Milk	Total cost	No. Eggs laid	Value	Loss	Gain	Cost per dozen
	lbs.	lbs.	lbs.	lbs.	lbs.	lbs.	lbs.	\$ c.		\$ c.	\$ c.	\$ c.	cts.
1	486.0	247.5	21.75	440	27.5	36.5	590	26 51	1,489	67 49		40 98	21.6
2	491.0	231.0	15.75	440	25.0	33.5	580	25 36	1,584	65 86		40 50	19.2
3	506.0	235.25	21.5	449	30.25	31.25	620	26 59	1,115	45 33		18 74	28.9
4	475.0	255.5	18.75	424	28.5	30.0	560	25 83	1,083	43 92		18 09	16.8
5	497.0	270.5	16.25	431	25.25	30.5	590	26 93	1,438	58 35		31 42	22.8
6	545.0	246.0	21.25	457	31.25	34.75	650	29 05	1,512	64 08		35 03	22.8
7	533.0	224.75	15.5	458	25.5	25.5	660	26 63	1,342	54 70		28 07	24.0
8	552.0	273.5	23.0	464	32.0	37.0	670	29 48	1,834	81 86		52 38	19.2
9	537.0	293.5	26.25	456	25.0	28.25	630	28 06	1,829	82 22		53 13	24.0
10	527.0	246.5	20.25	451	24.75	28.7	630	27 43	1,565	68 73		41 30	26.4
11	532.5	248.0	17.0	462	23.75	29.0	666	27 84	1,439	59 25		31 41	22.8
12	506.0	210.0	16.0	434	24.0	22.5	610	25 43	1,574	74 47		49 04	19.2
13	530.0	278.0	16.5	443	21.75	27.0	620	25 91	1,291	67 82		41 81	24.0
14	476.0	252.25	13.25	405	22.0	17.5	660	23 43	918	44 37		20 84	30.0
15	498.0	209.75	11.75	366	21.0	17.5	670	26 29	1,609	70 18		43 89	19.2
16	489.0	256.0	17.25	427	22.50	25.50	570	25 03	1,628	75 84		50 81	18.0
17	571.0	246.75	15.0	450	22.5	27.5	580	28 24	1,668	75 84		47 74	19.2
18	526.0	268.5	11.25	488	28.75	22.0	700	27 28	1,255	55 92		28 64	26.4
19	457.25	258.5	10.0	445	15.50	24.5	610	24 99	1,349	58 80		33 81	21.6
20	523.5	264.5	12.25	490	17.50	28.75	700	28 67	1,142	48 07		19 40	30.0
21	505.25	284.5	18.25	486	17.25	24.0	700	26 45	1,240	47 07		20 62	25.2
22	484.0	248.75	13.5	460	21.25	23.75	650	25 98	1,087	45 07		19 09	28.8
23	429.0	182.0	13.0	470	14.75	24.0	680	22 69	976	44 83		22 16	28.8
24	514.25	268.25	17.75	482	25.0	30.5	690	26 99	1,598	76 10		49 11	20.4
25	457.75	244.0	10.25	440	18.0	16.0	595	24 38	1,373	65 29		40 91	21.6
26	469.75	211.25	8.75	447	19.0	20.5	620	23 88	1,255	58 00		34 12	28.8
27	441.0	250.5	9.5	424	21.5	20.5	560	23 88	1,444	66 56		42 90	19.2
28	504.75	251.25	16.0	447	14.0	17.5	630	25 62	1,038	49 47		23 85	28.0
29	506.0	248.25	7.25	445	15.0	20.0	620	26 09	1,167	55 35		29 26	26.4
30	438.5	191.5	13.0	431	17.0	22.25	600	22 54	1,647	76 96		54 42	16.8
31	384.75	210.25	11.25	383	11.25	17.25	642	21 49	1,300	55 79		33 97	20.4
32	430.75	225.0	18.5	448	24.25	24.25	645	24 08	1,566	65 32		41 24	18.0
33	409.0	205.25	19.0	437	17.0	33.0	620	22 71	1,433	58 05		35 34	19.2
34	479.0	248.0	18.25	444	23.5	33.0	655	26 01	2,014	91 94		65 92	14.4
35	448.0	206.25	20.0	452	21.25	27.0	660	23 96	1,630	65 79		44 83	18.0
36	419.25	262.75	20.25	415	23.25	26.75	580	24 50	1,669	68 55		44 05	18.0
37	346.5	179.5	17.25	438	17.0	21.5	640	20 18	1,091	45 79		25 61	24.0
38	421.0	224.25	17.75	440	21.0	29.75	670	24 01	1,654	74 24		50 23	16.8
39	407.25	279.5	17.5	415	25.0	36.5	570	24 75	1,947	86 50		61 84	15.6
40	379.5	195.75	18.5	422	26.25	28.75	610	21 63	1,418	58 94		37 41	18.0
41	401.0	253.25	17.0	457	24.25	27.75	660	24 00	1,210	51 36		27 36	24.0
42	375.75	267.75	17.5	411	23.0	25.0	560	23 01	1,515	60 30		37 29	18.0
43	398.0	266.0	21.5	427	25.0	32.75	500	24 10	2,255	100 79		76 69	10.5
44	372.0	200.75	18.5	411	25.25	30.5	480	21 65	1,268	51 40		29 75	20.4
45	391.0	187.25	21.5	462	32.25	29.5	700	29 69	1,382	60 17		37 48	18.0
46	398.75	213.75	19.5	437	25.5	25.75	640	22 81	1,405	57 32		34 51	19.2
47	397.75	261.5	20.0	411	27.5	35.0	560	24 27	1,601	65 85		41 58	18.0
48	381.5	196.5	20.0	411	24.0	27.75	560	21 48	1,699	74 77		53 29	15.6
49	384.25	240.0	16.75	411	25.0	26.75	560	22 48	1,443	56 03		33 55	19.2
Total.....	23,067.5	11,954.75	833.05	21,971	1,139.30	1,333.5	31,036	1,241 41	72,578 3	3,156 17		1,906 40	
Average...	461.3	239.09	16.6	439	22.7	26.6	620	24 82	1451.5	63 12		38 12	20.5

## PRINCE EDWARD ISLAND EGG LAYING CONTEST.

## LIST OF ENTRANTS.

With individual and total production 1920-21.

Pen	Owner and Address	Variety	Bird No.										Floor	Total
			1	2	3	4	5	6	7	8	9	10		
1	Percy Mutch, Mount Harbour, P.E.I.	W.L....	* 94	48	136	*129	116	212	129	142	77	155	4	1,245
2	J. B. Millman, Kensington, P.E.I.	B.R....	*162	149	263	171	118	191	140	189	*143	123	.....	1,649
3	William Neale, Bear River, P.E.I.	W.L....	142	151	195	77	179	126	177	183	142	88	5	1,465
4	H. L. Machon, Murray River, P.E.I.	B.R....	119	127	104	111	132	114	132	86	67	193	8	1,193
5	Edwin Reid, Rollo Bay, P.E.I.	W.L....	D 62	99	146	179	193	148	125	*109	72	179	4	1,316
6	Mrs. R. G. McLaren, New Perth, P.E.I.	B.R....	135	18	132	*160	D 16	127	158	138	172	127	4	1,187
7	Mrs. R. W. Bullpitt, Cardigan, P.E.I.	W.L....	155	173	149	164	136	83	153	68	81	92	4	1,258
8	W. G. Darke, Brookfield, P.E.I.	B.R....	85	76	65	72	110	131	93	165	* 75	155	4	1,031
9	J. J. Jen ins, Orwell Cove, P.E.I.	W.L....	106	162	116	132	153	*143	133	179	168	161	3	1,456
10	Walter Buntain, S. Rustico, P.E.I.	B.R....	128	70	101	109	104	83	91	126	73	70	.....	955
11	Mrs. J. J. McLellan, Grand River, P.E.I.	W.W....	130	137	149	155	174	144	126	144	135	145	2	1,441
12	J. E. Sinclair, Summerfield, P.E.I.	B.R....	102	35	133	54	135	74	42	77	124	78	1	855
13	C. McLellan, Arlington, P.E.I.	W.L....	207	104	123	119	103	179	121	173	* 85	52	1	1,267
14	Jas. Cain, New Perth, P.E.I.	B.R....	130	24	105	114	87	137	94	178	141	106	9	1,125
15	H. S. Moose, Kensington, P.E.I.	W.L....	124	93	108	96	133	68	102	136	99	140	5	1,104
16	H. S. Moose, Kensington, P.E.I.	B.R....	* 65	124	50	59	1	27	26	144	56	30	3	585
17	J. D. McLellan, Richmond, P.E.I.	W.W....	159	117	124	120	128	118	52	94	115	150	4	1,191
18	W. McKay, Stanley, Bridge, P.E.I.	B.R....	123	80	95	132	153	111	130	132	94	147	3	1,200
19	F. W. E. Haslam, Bradalbane, P.E.I.	W.L....	163	131	46	89	42	14	149	87	113	132	2	968
20	Rev. M. Monaghan, Miscouche, P.E.I.	W.W....	46	100	47	35	100	63	125	125	34	95	3	773
21	Exp. Station, Charlottetown, P.E.I.	W.L....	*152	97	118	158	194	160	186	62	201	160	4	1,492
22	Exp. Station, Charlottetown, P.E.I.	B.R....	105	131	157	*150	81	83	142	186	132	*101	8	1,276
23	Exp. Station, Charlottetown, P.E.I.	B.R....	103	107	144	82	134	91	127	159	112	82	11	1,152
24	Exp. Station, Charlottetown, P.E.I.	B.R....	*107	112	167	119	160	135	117	116	197	72	12	1,314
25	Exp. Station, Charlottetown, P.E.I.	B.R....	171	137	109	162	138	88	183	104	143	198	2	1,435
Total.....													29,933	

\* Production of more than one bird.  
D Dead but not substituted.



## PRINCE EDWARD ISLAND EGG LAYING CONTEST.

TABLE SHOWING PRODUCTION COSTS

Feed with cost, eggs and value, gain and cost per dozen in 1920-21

Pen number	Scratch grain	Meal mixture	Beef scrap	Green feed	Milk	Grit	Shell	Total cost	Eggs laid	Value	Loss	Gain	Cost per dozen	
	lbs.	lbs.	lbs.	lbs.	lbs.	lbs.	lbs.	\$		\$	\$	\$ c.	c.	
1	458	250	11-0	93	382	28-0	26-0	26 77	1,245	38 48	.....	11 71	25	
2	514	321	12-0	125	400	28-0	25-0	31 77	1,649	50 09	.....	18 32	23	
3	429	236	10-0	97	352	28-0	25-0	25 85	1,465	44 27	.....	18 42	19	
4	530	321	16-0	125	380	28-0	26-0	32 82	1,193	37 63	.....	4 81	33	
5	468	261	10-5	84	332	29-0	27-0	26 93	1,316	41 09	.....	14 16	24	
6	480	289	12-0	175	400	28-0	26-0	29 85	1,187	37 41	.....	7 56	30	
7	430	275	14-5	97	332	30-0	25-0	27 04	1,258	37 23	.....	10 19	25	
8	480	311	11-0	165	396	28-0	28-0	30 63	1,031	25 94	4 69	.....	35	
9	482	243	12-0	95	332	29-0	26-0	27 97	1,456	44 54	.....	16 57	23	
10	448	267	16-0	117	376	28-0	25-5	27 53	955	25 20	2 33	.....	35	
11	509	291	15-0	125	360	28-0	28-0	30 83	1,441	44 16	.....	13 33	26	
12	419	271	16-0	117	376	28-0	24-0	27 48	855	22 82	4 66	.....	38	
13	443	236	12-0	95	332	28-0	29-0	25 76	1,267	33 10	.....	7 34	24	
14	484	319	15-0	127	380	28-0	25-0	31 42	1,125	33 10	.....	1 68	33	
15	432	269	14-0	91	372	27-0	27-0	28 10	1,104	30 25	.....	2 15	30	
16	411	201	20-0	125	336	26-0	26-0	24 90	585	16 77	8 13	.....	51	
17	434	273	10-5	113	376	25-5	27-0	27 26	1,191	30 43	.....	3 17	27	
18	Exp. Farm, Kentville, N.S.	B.R....	259	8-0	125	396	29-0	27-0	29 07	1,200	33 01	.....	3 94	29
19	439	287	17-5	103	332	28-0	28-0	28 58	968	26 25	2 33	.....	35	
20	416	184	14-0	116	256	28-0	29-0	23 87	773	22 29	1 58	.....	36	
21	422	244	15-5	105	360	28-0	27-0	25 75	1,492	45 45	.....	19 70	20	
22	464	268	10-0	117	388	27-5	24-5	27 65	1,276	36 74	.....	9 09	25	
23	472	276	14-0	127	320	27-0	25-0	28 56	1,152	33 34	.....	4 78	29	
24	474	277	14-0	127	320	27-0	25-0	28 65	1,314	36 24	.....	7 59	26	
25	523	197	13-0	125	380	28-0	27-0	27 03	1,435	46 18	.....	19 15	24	
Total.....	11,549	6,626	405-5	2,911	8,966	697-0	658-0	702-07	29,933	872 01	23 72	193 66	.....	
Average.....	462	265	16-2	116-4	358-5	27-8	26-3	28-00	1,197-3	34 88	.....	6 88	28	

## NOVA SCOTIA EGG LAYING CONTEST.

LIST OF ENTRANTS

With individual and total production 1920-21

Pen	Owner and Address	Variety	Bird No.										Floor	Total
			1	2	3	4	5	6	7	8	9	10		
1	R. B. H. Davidson, Amherst, N.S.	W.R....	D	* 31	124	D 4	D	D 46	D 5	D 98	D 91	124	12	535
2	G. Harrison, Nappan, N.S.	B.R....	85	81	101	132	117	113	124	74	D 65	87	35	1,014
3	Exp. Farm, Kentville, N.S.	B.R....	* 64	192	116	170	111	179	180	173	200	* 64	42	1,491
4	Exp. Farm, Kentville, N.S.	S.W.W.	88	D 35	139	D 83	119	133	46	87	* 3	78	28	839
5	C. B. McMullen, Truro, N.S.	R.I.R....	153	D153	102	139	114	168	144	119	167	96	24	1,379
6	J. R. McMullen, Truro, N.S.	B.R....	212	193	128	155	163	*114	158	182	121	179	20	1,625
7	F. W. Black, Amherst, N.S.	B.R....	182	129	183	127	150	186	113	130	104	166	39	1,509
8	T. Hooper, Truro, N.S.	W.W....	120	62	107	138	56	100	106	182	205	92	29	1,197
9	C. B. Chapman, Amherst, N.S.	B.R....	172	157	153	155	245	214	140	*133	138	155	20	1,682
10	David Bacon, Nappan, N.S.	R.I.R....	121	140	104	152	112	150	118	91	122	82	38	1,230
11	W. McKinnon, Truro, N.S.	B.R....	*150	52	119	117	121	159	129	*239	75	*138	33	1,332
12	D. Bacon, Nappan, N.S.	B.R....	71	120	124	89	* 79	D 85	110	135	165	102	32	1,112
13	F. Cochran, Amherst, N.S.	B.R. D.	33	167	* 46	134	125	*136	D 90	195	164	141	44	1,275
14	F. Cochran, Amherst, N.S.	W.L....	159	83	180	153	127	108	142	99	132	131	8	1,322
15	C. B. Chapman, Amherst, N.S.	W.L....	D 21	D 20	D 7	109	D 53	142	168	D 42	76	D 12	34	684
16	G. Ripley, Nappan, N.S.	B.R....	114	123	91	126	114	165	120	163	106	159	21	1,302
17	Perry & Sim, Billtown, N.S.	B.L....	139	* 71	178	166	137	104	130	165	149	178	14	1,431
18	V. G. Fuller, Amherst, N.S.	W.L....	143	75	61	182	94	103	88	*120	126	117	68	1,177
19	A. Clegg, Amherst, N.S.	B.R....	196	119	195	43	137	125	123	164	155	171	18	1,446
20	W. Forsyth, Amherst, N.S.	B.R....	133	D114	* 56	77	70	135	182	*163	167	187	55	1,339
21	Exp. Farm, Nappan, N.S.	B.R....	D142	182	238	168	85	64	67	171	152	96	66	1,431
22	Exp. Farm, Nappan, N.S.	B.R....	210	193	*157	186	213	175	185	192	169	61	17	1,758
Total.....														28,110

\*Production of more than one bird.

D—Dead but not substituted.



## NOVA SCOTIA EGG LAYING CONTEST, NAPPAN.

TABLE SHOWING PRODUCTION COSTS  
Feed with cost, eggs and value, gain and cost per dozen in 1920-21

Pen number	Scratch grain	Meal mixture	Beef scrap	Green feed	Grit	Shell	Total cost	Eggs laid	Value	Loss	Gain	Cost per dozen
	lbs.	lbs.	lbs.	lbs.	lbs.	lbs.	\$ c.		\$ c.	\$ c.	\$ c.	c.
1	442	116	33	170	17	12	22 23	535	16 23	6 00		49
2	568	247	52	170	26	15	31 32	1,014	30 24	1 08		36
3	599	244	65	170	22	20	33 19	1,491	53 61			26
4	577	165	25	170	22	19	26 60	839	31 57			38
5	606	232	25	170	17	19	30 21	1,379	48 31			25
6	612	272	60	170	36	27	35 12	1,625	55 97			25
7	621	215	59	170	19	26	33 00	1,509	51 63			26
8	578	203	23	170	16	19	27 91	1,197	40 23			28
9	614	297	46	170	33	25	34 91	1,682	56 18			24
10	601	224	37	170	20	21	30 57	1,230	36 83			29
11	607	250	40	170	18	20	31 72	1,332	47 13			28
12	554	222	63	170	18	21	31 18	1,112	35 71			33
13	550	208	27	170	17	22	28 00	1,275	49 04			26
14	487	247	23	170	17	20	26 36	1,322	43 47			23
15	398	154	27	170	18	15	21 32	684	24 58			37
16	605	256	28	170	20	17	30 97	1,302	41 81			28
17	504	200	27	170	22	16	25 75	1,431	47 44			20
18	498	211	25	170	19	17	25 61	1,177	40 66			25
19	643	312	73	170	25	22	37 54	1,446	48 23			30
20	595	281	39	170	13	24	32 47	1,339	50 05			29
21	622	300	41	170	16	24	34 19	1,431	53 33			28
22	632	263	40	170	24	29	35 52	1,758	66 88			22
Total	16,489	5,119	878	3,740	455	450	665 69	28,110	969-13	7-08	312-52	28
Average	749-5	232-7	39-9	170	20-7	24-5	30-26	1277-7	44-05		13-79	

## NEW BRUNSWICK EGG LAYING CONTEST.

## LIST OF ENTRANTS

With individual and total production 1920-21

Pen	Owner and Address	Variety	Bird No.										Floor	Total
			1	2	3	4	5	6	7	8	9	10		
1	D. Mersereau, Russiagornish, N.B.	B.R....	* 89	163	142	228	206	193	151	168	178	175	7	1,700
2	Invicta Farm, Oromocto, N.B.	B.R....	188	135	*206	196	133	177	D102	180	209	161	19	1,756
3	Elmsville P. Club, Elmsville, N.B.	B.R....	183	62	167	168	160	222	226	* 51	149	180	5	1,573
4	W. E. B. Tait, Dorchester, N.B.	B.R....	219	232	189	160	192	158	183	212	157	*156	6	1,864
5	Invicta Farm, Oromocto, N.B.	B.R....	130	146	105	90	181	170	220	226	216	37	5	1,526
6	H. McEwen, Chatham, N.B.	B.R....	160	148	118	142	160	197	165	175	170	160	7	1,602
7	Allen & Ferguson, Fredericton, N.B.	B.R....	210	110	175	199	92	131	139	132	244	124	8	1,564
8	G. E. Wilson, Centreville, N.B.	B.R....	140	186	160	157	162	153	228	181	209	128	2	1,706
9	N. W. Eveleigh, Sussex, N.B.	B.R....	164	200	166	167	162	186	190	198	*173	206	4	1,816
10	M. G. Robichaud, Bretagneville, N.B.	B.R....	139	133	117	96	139	161	86	128	82	94	8	1,183
11	M. A. Reid, Rollingdam, N.B.	B.R....	108	88	* 79	103	141	84	23	* 82	118	134	8	968
12	A. L. Lever, Leveville, N.B.	B.R....	178	164	172	157	82	179	167	* 97	141	150	12	1,499
13	C. M. Peart, Havelock, N.B.	B.R....	249	134	D116	142	* 42	136	93	* 75	*139	176	13	1,315
14	A. T. Reid, Rollingdam, N.B.	B.R....	229	153	*179	191	180	154	116	208	50	214	11	1,685
15	Geo. Danby, North Devon, N.B.	W.W....	247	187	253	132	158	97	D 66	183	*174	134	7	1,638
16	H. Williston, Newcastle, N.B.	W.W....	143	110	196	157	79	177	164	*134	147	171	3	1,481
17	Vye A. Gibson, Moncton, N.B.	B.O....	85	153	176	*107	113	124	28	137	70	139	9	1,141
18	G. E. Wilson, Centreville, N.B.	W.R....	96	136	71	176	105	144	133	68	127	168	3	1,227
19	R. A. Snowball, Chatham, N.B.	W.L....	177	124	138	164	128	77	100	170	111	183	10	1,382
20	Exp. Station, Fredericton, N.B.	B.R....	228	149	212	129	169	149	164	214	* 97	229	6	1,746
21	Exp. Station, Fredericton, N.B.	W.W....	*176	177	173	D128	D162	134	102	170	122	*217	15	1,576
Total														31,948

\*—Production of more than one bird.  
D—Dead but not substituted.

NEW BRUNSWICK EGG LAYING CONTEST, FREDERICTON.

TABLE SHOWING PRODUCTION COSTS.

Feed with cost, eggs and value, gain and cost per dozen in 1220-91.

Pen Number	Scratch grain	Meal mixture	Beef scrap	Green feed	Grit	Shell	Char-coal	Total cost	Eggs laid	Value	Loss	Gain	Cost per dozen
	lbs.	lbs.	lbs.	lbs.	lbs.	lbs.	lbs.	\$ c.		\$ c.	\$ c.	\$ c.	cts.
1.....	733	398	16	153	15-0	36-0	1-0	36 21	1,700	69-70	.....	33 49	25
2.....	735	480	16	153	15-0	40-5	1-0	39 03	1,756	73 84	.....	34 81	26
3.....	700	315	16	153	14-0	39-5	1-0	32 41	1,573	60 89	.....	28 48	24
4.....	741	381	16	153	15-0	40-5	0-5	35 83	1,864	69 65	.....	33 82	23
5.....	743	356	15	153	15-0	38-5	0-5	33 74	1,526	62 96	.....	29 22	26
6.....	740	401	18	153	14-0	38-5	1-0	36 67	1,602	59 53	.....	22 86	26
7.....	775	381	15	153	15-0	41-5	1-0	35 88	1,564	60 31	.....	24 43	27
8.....	738	395	15	153	15-0	41-5	1-0	36 02	1,706	69 64	.....	33 62	25
9.....	756	371	15	153	15-0	39-5	1-0	35 78	1,816	72 11	.....	36 33	23
10.....	731	418	15	153	15-0	41-5	1-0	36 91	1,183	46 80	.....	9 89	37
11.....	701	393	17	153	15-0	41-0	1-0	35 50	968	38 69	.....	3 19	44
12.....	731	376	17	153	15-0	41-5	1-0	35 61	1,499	57 91	.....	22 30	28
13.....	701	461	17	153	12-0	40-5	1-0	34 20	1,315	52 63	.....	18 43	31
14.....	728	413	15	153	15-0	42-5	1-0	36 88	1,685	69 37	.....	32 49	25
15.....	711	271	10	153	13-0	38-5	1-0	30 89	1,638	66 35	.....	35 46	22
16.....	691	321	13	153	14-0	40-5	1-0	32 32	1,481	58 89	.....	26 57	26
17.....	677	416	14	153	10-0	38-5	1-0	35 00	1,141	44 60	.....	9 60	36
18.....	732	426	19	153	13-5	37-0	1-0	37 03	1,227	42 17	.....	5 14	36
19.....	559	356	12	153	11-0	31-5	1-0	29 73	1,382	57 20	.....	27 47	25
20.....	736	300	13	153	13-5	39-0	1-0	32 15	1,746	71 44	.....	39 29	22
21.....	695	244	15	153	16-5	36-0	1-0	29 90	1,576	67 80	.....	37 90	22
Total.....	15,054	7,873	319	3,213	296-5	824-0	20-0	727 69	31,948	1,272 48	.....	544 79	.....
Average.....	717	375	15-2	153	14-1	39-2	0-9	34 65	1521-3	60 59	.....	25 94	27

QUEBEC EGG LAYING CONTEST.

LIST OF ENTRANTS.

With individual and total production 1920-21.

Pen	Owner and Address	Variety	Bird No.										Floor	Total
			1	2	3	4	5	6	7	8	9	10		
1	Sta. Expérimentale, Cap Rouge, Qué.....	B.R....	121	*93	142	134	108	128	115	160	135	140	8	1,284
2	André Bouchard, St-Philippe de Néri, Que.....	R.I.R..	153	*138	*117	*135	102	*106	160	122	93	105	6	1,237
3	George Bouchard, Ste-Anne de la Pocatière, Que.....	R.I.R..	86	128	138	99	165	111	166	132	87	127	1	1,240
4	Sta. Expérimentale, Cap Rouge, Qué.....	B.R....	117	135	137	112	113	121	119	43	*90	110	4	1,101
5	Ecole d'Agri., Ste-Anne de la Pocatière, Qué.....	R.I.R..	D73	73	127	116	106	145	95	91	86	79	4	995
6	M. l'abbé Galarneau, Charlesbourg, Qué.....	R.I.R..	150	85	78	49	84	90	77	24	*92	99	5	833
7	Jos. W. Gauvin, Cham-pigny, Qué.....	R.I.R..	80	68	75	99	95	121	51	85	132	64	.....	870
8	Sta. Expérimentale, Cap Rouge, Qué.....	B.R....	99	116	88	113	106	87	* 89	134	77	102	4	1,015
9	Louis Lessard, St-Jos. de Beauce, Qué.....	R.I.R..	91	157	63	79	91	118	29	83	42	124	3	880
10	A. Ouellette, N.D. de Pierreville, Qué.....	R.I.R..	82	133	156	24	109	96	* 81	60	134	114	21	1,010
11	Station Avicole, Princeville, Qué.....	R.I.R..	53	40	84	*122	78	60	108	63	D83	68	5	764
12	M. l'abbé L. P. Cote, St-Alexis de Mat., Qué.....	B.R....	82	90	65	89	21	80	86	85	45	51	1	695
13	Ecole de Agri., Ste-Anne de la Pocatière, Qué.....	B.R....	88	74	130	102	96	53	51	112	84	103	1	894
14	G. F. Fourmier, Montmagny, Qué.....	B.R....	162	206	150	102	85	171	128	138	152	129	6	1,429
15	Melle M. Laferrière, New Carlisle, Qué.....	B.R....	89	79	26	139	129	6	D10	72	98	41	9	698
16	Sta. Avicole, Princeville, Qué.....	B.R....	160	74	48	2	68	83	D13	48	144	84	11	735
17	Sta. Expérimentale, Cap Rouge, Que.....	B.R....	111	146	104	120	140	114	144	83	170	99	.....	1,231
18	A. Gaboury, Cap Rouge, Qué.....	B.R....	121	91	89	55	36	62	21	139	138	132	.....	884
19	Sta. Expérimentale, Cap Rouge, Que.....	B.R....	103	118	133	173	95	98	137	141	156	170	1	1,325
20	Sta. Expérimentale, Cap Rouge, Que.....	B.R....	117	111	161	132	136	107	119	152	135	112	1	1,283
Total.....														20,431

\* Production of more than one bird.  
D Dead but not substituted.

## QUEBEC EGG LAYING CONTEST, CAP ROUGE.

TABLE SHOWING PRODUCTION COSTS.

Feed with cost, eggs and value, gain and cost per dozen in 1920-21.

Pen Number	Scratch grain	Meal mixture	Beef scrap	Green feed	Milk	Shell	Char-coal	Total cost	Eggs laid	Value	Loss	Gain	Cost per dozen
	lbs.	lbs.	lbs.	lbs.	lbs.	lbs.	lbs.	\$ c.	\$ c.	\$ c.	\$ c.	\$ c.	cts.
1.....	641	107.5	11.0	21	162	15.0	8.25	28 83	1,284	55 47			26 64
2.....	615	98.0	20.5	21	162	18.5	11.75	28 51	1,237	54 73			26 22
3.....	645	105.5	24.5	21	162	21.75	15.5	30 56	1,240	57 82			27 26
4.....	645	98.0	14.0	21	142	27.0	16.0	29 16	1,101	45 03			15 87
5.....	640	95.0	12.5	21	162	19.75	14.25	28 44	995	47 22			18 78
6.....	637	122.0	15.75	21	162	16.25	17.0	29 52	833	36 94			7 42
7.....	639	91.0	21.0	21	162	24.5	7.0	28 48	870	38 46			9 98
8.....	631	65.0	19.5	21	162	15.75	8.0	27 19	1,015	42 73			15 54
9.....	660	99.0	23.75	21	162	16.0	16.25	29 92	880	37 78			7 86
10.....	663	120.0	19.25	21	162	24.0	14.75	30 59	1,010	48 40			17 81
11.....	633	84.0	12.75	21	162	16.25	8.25	27 64	764	33 14			5 50
12.....	618	72.5	12.75	21	162	15.5	13.5	26 85	695	27 74			0 89
13.....	654	99.0	14.5	21	162	22.25	13.0	29 21	894	37 36			8 15
14.....	680	116.0	17.5	21	162	25.75	19.75	31 21	1,429	65 46			34 25
15.....	690	112.75	20.0	21	162	17.5	19.25	31 70	698	28 28			3 42
16.....	636	94.0	11.75	19	162	15.5	15.5	28 52	735	31 90			3 38
17.....	631	77.0	17.75	21	162	28.0	11.25	28 21	1,231	51 62			23 41
18.....	646	81.0	18.5	21	162	25.5	15.25	28 71	884	37 13			8 42
19.....	640	58.0	19.25	21	162	23.25	7.0	27 36	1,325	57 02			29 66
20.....	635	92.0	15.0	21	150	20.5	8.5	28 10	1,283	53 38			25 28
Total.....	12,879	1,887.25	341.5	420	3,208	408.5	260.5	578 71	20,403	887 61			315 74
Average.....	644	94.0	17.0	21	160.5	20.5	13.0	28 93	1020.1	44 38			15 79

## ONTARIO EGG LAYING CONTEST.

LIST OF ENTRANTS.

With individual and total production 1920-21.

Pen	Owner and Address	Variety	Bird No.										Floor	Total
			1	2	3	4	5	6	7	8	9	10		
1	J. R. Stork, St. Catharines, Ont.	B.R....	197	* 58	164	159	134	155	177	108	188	206	9	1,555
2	Neff Bros., Simcoe, Ont.	B.R....	168	213	213	181	132	205	158	122	145	157	23	1,717
3	F. C. Stille, Ottawa, Ont.	B.R....	*167	137	208	250	*133	252	110	174	200	186	12	1,829
4	G. Poplewell, Maberly, Ont.	B.R....	140	201	158	224	217	162	198	*169	190	173	16	1,848
5	G. E. Hall, Trafalgar, Ont.	B.R....	177	195	98	167	114	*183	*184	* 66	157	*191	10	1,542
6	Nor. Spec. Farm, St. Williams, Ont.	B.R....	*167	*122	181	114	145	*136	83	154	* 59	158	28	1,347
7	Ross Trivett, Newmarket, Ont.	B.R....	*114	D 19	117	143	95	91	142	* 181	145	141	27	1,215
8	Ottawa East P. Yards, Ottawa, Ont.	Col.W..	106	131	96	78	97	105	D133	163	78	143	21	1,151
9	E. L. Ruddy, Pickering, Ont.	W.W....	150	167	*114	173	*128	109	D158	99	170	157	28	1,453
10	Ross Trivett, Newmarket, Ont.	W.W....	69	* 47	* 82	D 90	138	161	* 46	D 63	55	49	31	831
11	N. H. Gamp, New Hamburg, Ont.	Anc.....	179	205	214	191	156	*146	145	212	207	174	11	1,840
12	A. R. Miller, Eganville, Ont.	Anc.....	108	119	* 47	122	62	122	126	103	112	9	29	959
13	H. Montgomery, Avonmore, Ont.	R.C....	161	143	132	105	99	103	124	153	141	173	30	1,364
14	C. E. Smith, Scotland, Ont.	S.C....	127	D134	* 98	121	149	D 5	51	.....	168	*113	19	985
15	A. Neal & Son, Stratford, Ont.	W.L....	228	158	169	199	169	175	174	122	169	189	21	1,773
16	Nor. Spec. Farm, St. Williams, Ont.	W.L....	155	175	186	122	154	186	156	111	163	215	22	1,645
17	G. E. Hall, Trafalgar, Ont.	W.L....	148	147	142	209	170	129	190	129	154	*162	27	1,607
18	C. E. Smith, Scotland, Ont.	W.L....	151	107	148	154	187	150	148	109	170	183	26	1,533
19	W. J. Richardson, Caledonia, Ont.	W.L....	194	132	189	148	152	146	188	139	162	109	7	1,566
20	Alex. McLean, Gananoque, Ont.	W.L....	*196	214	167	191	181	158	170	189	195	159	7	1,827
21	Dr. I. H. Ante, Richmond Hill, Ont.	W.L....	188	193	181	134	139	134	127	221	191	120	28	1,656
22	Ottawa East P. Yards, Ottawa, Ont.	W.L....	116	*131	128	*127	153	180	145	172	121	*111	20	1,404
23	Exp. Farm, Ottawa, Ont.	W.L....	172	162	*174	123	133	124	42	215	159	* 74	32	1,410
24	Exp. Farm, Ottawa, Ont.	B.R....	* 99	115	190	* 74	169	204	125	121	132	161	32	1,422
Total.....														35,477

\* Production of more than one bird.

D Dead but not substituted.



ONTARIO EGG LAYING CONTEST, OTTAWA.

TABLE SHOWING PRODUCTION COSTS

Feed with cost, eggs and value, gain and cost per dozen in 1920-21

Pen number	Scratch grain	Meal mixture	Beef scrap	Green feed	Milk	Grit	Shell	Total cost	laid	Value	Loss	Gain	Cost per dozen
	lbs.	lbs.	lbs.	lbs.	lbs.	lbs.	lbs.	\$ c.		\$ c.	\$ c.	\$ c.	c.
1	564.5	271.0	15.0	502	700	40.5	40.5	29 60	1,555	71 78	.....	42 18	22
2	533.5	264.0	16.5	502	700	35.75	34.25	28 36	1,717	79 25	.....	50 89	19
3	533.6	255.0	20.0	502	700	36.5	35.50	28 50	1,829	82 96	.....	54 46	18
4	522.5	254.0	15.75	502	700	32.5	23.0	27 50	1,848	80 99	.....	53 49	17
5	533.5	252.5	12.75	502	700	37.5	27.5	27 87	1,542	70 72	.....	42 85	21
6	512.5	207.5	12.0	446	700	28.5	30.25	25 96	1,345	59 69	.....	33 73	23
7	471.5	185.25	15.25	436	700	27.75	26.25	24 32	1,215	53 64	.....	29 32	24
8	509.5	260.0	14.25	502	700	23.0	22.0	27 23	1,151	47 55	.....	20 32	28
9	518.5	223.75	8.5	502	700	29.0	18.5	26 25	1,453	69 77	.....	43 52	21
10	416.5	178.5	6.0	416	700	17.25	20.0	21 83	831	38 73	.....	16 90	31
11	433.0	229.0	11.0	488	700	21.0	25.5	24 41	1,840	83 31	.....	58 90	15
12	410.0	164.25	14.0	488	700	24.0	22.5	21 62	959	45 39	.....	23 77	27
13	401.0	202.0	10.5	488	700	27.25	24.0	22 28	1,364	53 12	.....	30 84	19
14	394.0	173.25	11.5	488	700	20.25	19.0	21 22	985	42 13	.....	20 91	25
15	440.0	220.75	15.75	488	700	24.0	30.75	24 31	1,773	76 51	.....	52 20	16
16	467.0	211.25	8.5	488	700	26.5	29.5	22 96	1,645	72 86	.....	49 90	16
17	434.0	232.25	12.5	488	700	26.5	31.0	24 21	1,607	68 98	.....	44 77	18
18	449.0	252.75	13.0	488	700	26.5	30.5	24 24	1,533	65 08	.....	40 84	18
19	445.0	250.25	20.25	488	700	39.0	31.25	26 29	1,566	61 15	.....	34 84	20
20	448.0	224.75	14.5	488	700	29.5	34.5	24 64	1,827	80 55	.....	55 92	16
21	455.0	232.6	13.0	488	700	27.75	29.75	25 00	1,656	70 68	.....	45 68	18
22	439.0	183.25	10.25	488	700	27.0	26.5	22 90	1,404	59 47	.....	36 57	19
23	436.0	204.25	14.5	488	700	29.0	27.0	23 23	1,410	60 18	.....	36 95	19
24	508.5	248.0	12.5	488	700	30.5	17.25	26 76	1,422	64 45	.....	37 69	22
Total	11,275.5	5,380.0	317.75	11,644	16,800	687.0	656.75	601 48	35 477	1,558 92	.....	957 44	.....
Average	470.0	224.0	15.8	485	700	28.5	27.5	25 06	1,478.2	64 95	.....	39 89	20

MANITOBA EGG LAYING CONTEST.

LIST OF ENTRANTS

With individual and total production 1920-21

Pen	Owner and Address	Variety	Bird No.										Floor	Total
			1	2	3	4	5	6	7	8	9	10		
1	J. B. Ober, Brandon, Man	B.O.....	153	141	83	88	41	55	43	51	*131	41	20	847
2	D. Russell, Two Creeks, Man	R.I.R.....	* 83	136	96	87	133	D148	130	133	148	117	12	1,223
3	E. Blake, Brandon, Man	Anc.....	132	152	123	115	112	107	141	76	104	82	14	1,158
4	E. H. Hebel, Brandon, Man	Anc.....	159	120	136	*110	120	142	D 65	96	101	62	7	1,118
5	L. J. Waghorn, Morse Place, Man	Anc.....	176	207	91	150	137	150	179	168	134	122	11	1,525
6	H. Cooper, East Kildonan, Man	Anc.....	135	195	171	188	124	165	191	176	184	108	21	1,658
7	G. F. Windsor, Crystal City, Man	S.C.B.L.	183	134	142	165	110	147	118	140	45	167	3	1,354
8	J. J. Logan, Norwood, Man	S.C.W.L.	169	158	208	157	163	123	212	99	185	135	6	1,615
9	Arthur Howell, Brandon, Man	S.C.W.L.	155	160	186	176	149	186	141	167	192	89	3	1,599
10	Jos. McQuoid, Winnipeg, Man	S.C.W.L.	*113	191	132	162	184	128	142	163	55	101	22	1,393
11	Rutland Poultry, Karnac, Man	S.C.W.L.	187	*140	* 86	175	195	202	61	117	129	190	9	1,491
12	C. S. Palmer, Brandon, Man	S.C.W.L.	143	205	97	91	176	174	182	161	129	122	5	1,485
13	Mrs. A. S. Hart, Gladstone, Man	W.W.....	170	151	215	178	147	147	234	159	154	225	16	1,796
14	G. F. Thompson, Minnedosa, Man	W.W.....	128	146	154	215	D133	87	196	154	201	184	19	1,617
15	J. N. Scott, Moorepark, Man	S.L.W.....	107	106	D 26	138	130	* 72	128	D 86	D 96	170	6	1,065
16	Kerr & McGuinness, Brandon, Man	Camp.....	71	118	80	93	D	126	108	150	95	D	19	860
17	Peerless Product Co., Brandon, Man	P.R.....	63	D 81	69	D 94	63	D	53	D 48	.....	D 21	3	486
18	J. C. Kerr, Brandon, Man	B.R.....	197	150	154	93	141	166	183	154	198	223	13	1,672
19	Mrs. J. Woods, Brandon, Man	B.R.....	82	134	93	123	155	159	134	149	132	92	14	1,257
20	Exp. Farm, Brandon, Man	B.R.....	133	193	201	126	155	157	145	197	175	217	13	1,712
21	Exp. Farm, Brandon, Man	B.R.....	188	125	125	149	184	149	164	145	135	137	8	1,509
22	Exp. Farm, Brandon, Man	W.W.....	149	150	205	155	209	131	235	214	187	196	7	1,838
23	Exp. Farm, Brandon, Man	W.W.....	141	185	180	142	105	150	132	113	207	175	5	1,535
Total														31,813

\*—Production of more than one bird.  
D—Dead but not substituted.

## MANITOBA EGG LAYING CONTEST, BRANDON.

## TABLE SHOWING PRODUCTION COSTS

Feed with cost, eggs and value, gain and cost per dozen in 1920-21

Pen number	Scratch grain	Meal mixture	Beef scrap	Green feed	Milk	Grit	Shell	Other feeds	Total cost	Eggs laid	Value	Loss	Gain	Cost per dozen
	lbs.	lbs.	lbs.	lbs.	lbs.	lbs.	lbs.	lbs.	\$		\$ c.	\$ c.	\$ c.	c.
1.....	359	304.0	2.5	46	208	22.5	17.5	3.5	20 54	847	23 23	.....	2 69	29
2.....	409	309.0	2.5	64	223	29.0	27.0	4.0	22 84	1,223	37 27	.....	14 43	22
3.....	360	223.0	2.5	60	197	20.0	24.0	3.5	18 79	1,158	31 66	.....	12 87	19
4.....	353	216.5	2.5	55	193	21.0	23.0	3.5	18 46	1,118	32 48	.....	14 02	19
5.....	407	256.0	2.5	60	202	24.0	28.5	4.0	21 39	1,525	47 51	.....	26 12	17
6.....	441	236.0	2.5	55	198	20.0	24.0	4.0	21 90	1,658	48 39	.....	26 49	16
7.....	383	281.0	2.5	66	201	25.5	30.5	4.0	21 27	1,354	38 50	.....	17 25	18
8.....	365	285.0	2.5	66	201	22.0	30.0	4.0	21 00	1,615	50 00	.....	29 00	15
9.....	380	293.0	2.5	57	201	23.0	28.0	3.0	21 45	1,599	46 92	.....	25 49	15
10.....	338	343.0	2.5	66	198	24.0	35.0	4.0	21 62	1,393	42 40	.....	20 78	18
11.....	346	295.0	2.5	69	199	19.0	33.5	4.0	20 29	1,491	44 67	.....	24 38	16
12.....	383	312.0	2.5	67	201	22.0	31.0	4.0	22 01	1,485	42 34	.....	20 33	17
13.....	418	307.0	2.5	71	206	26.0	31.0	4.0	23 18	1,796	61 59	.....	38 41	15
14.....	438	373.0	2.5	70	204	30.0	31.0	4.0	25 35	1,617	56 81	.....	31 46	18
15.....	331	299.0	2.5	64	196	22.0	26.5	4.0	20 18	1,065	34 02	.....	13 84	23
16.....	267	267.0	2.5	57	183	17.0	19.0	4.0	16 79	860	23 06	.....	6 27	23
17.....	264	225.0	2.5	53	128	23.0	14.0	3.0	15 43	486	12 53	2 90	.....	37
18.....	461	340.0	2.5	68	215	19.0	34.0	4.0	25 82	1,672	55 46	.....	29 64	18
19.....	372	367.0	2.5	68	214	28.0	31.0	4.0	23 38	1,257	36 44	.....	13 06	22
20.....	341	430.0	2.5	69	217	28.0	34.5	4.0	22 13	1,712	56 88	.....	34 75	15
21.....	369	273.0	2.5	68	198	19.0	21.0	4.0	19 85	1,509	51 97	.....	32 12	16
22.....	353	245.0	2.5	63	190	18.5	21.5	4.0	18 95	1,838	63 78	.....	44 83	12
23.....	348	244.0	2.5	64	199	16.0	20.0	4.0	18 65	1,535	55 27	.....	36 62	15
Total.....	8,486	6,723.5	57.5	1,446	4,572	518.5	615.5	88.5	481 25	318 13	993 18	2 90	514 83	.....
Average.....	369	292.5	2.5	63	199	22.5	26.5	4.0	20 92	1383.2	43 18	.....	22 26	18

## SASKATCHEWAN EGG LAYING CONTEST.

## LIST OF ENTRANTS

With individual and total production 1920-21

Pen	Owner and Address	Variety	Bird No.										Floor	Total
			1	2	3	4	5	6	7	8	9	10		
2	T. Gibbs, Moose Jaw, Sask.	S.C.W.L..	203	127	132	102	121	82	132	170	97	127	4	1,297
3	A. Hewlett, Manor, Sask.	S.C.W.L..	114	74	122	106	91	111	134	100	69	143	10	1,074
4	E. W. Anderson, Fleming Sask.	S.C.W.L..	201	190	136	180	104	* 52	238	140	111	129	7	1,488
5	J. H. Wilson, Rouleau, Sask.	S.C.W.L..	130	115	100	120	154	74	*161	109	130	146	2	1,247
6	E. Barnett, Radisson, Sask.	W.W.....	84	157	88	102	131	104	163	39	* 80	144	3	1,095
7	T. Gibbs, Moose Jaw, Sask.	B.L.....	D 55	100	72	97	203	118	194	123	*162	145	3	1,272
8	R. Morley, Moose Jaw, Sask.	S.C.A....	138	89	119	*138	146	112	160	193	123	*124	2	1,344
9	T. N. Blackstock, Prince Albert, Sask.	S.C.A....	131	150	85	161	156	126	76	84	154	82	3	1,208
10	K. W. Sterger, Luseland, Sask.	R.C.A....	112	95	22	98	100	172	113	150	107	158	2	1,129
12	A. G. Campbell, Adanac, Sask.	R.I.R....	168	112	119	165	116	113	114	121	98	189	14	1,329
13	A. G. Mitchell, Radisson, Sask.	R.I.R....	106	96	56	53	104	15	D 92	96	48	50	10	726
15	D. McIntosh, Swift Current, Sask.	B.R.....	122	146	171	201	62	178	*120	176	150	152	5	1,483
16	Mrs. B. H. Thompson, Boharm, Sask.	B.R.....	112	124	110	91	*103	* 85	118	105	126	117	2	1,093
17	Nor. Sask. Orpington Club, Sask.	W.O.....	63	D 34	71	*115	154	140	161	131	116	27	3	1,015
18	John McCheane, Borden, Sask.	W.W.....	101	139	157	85	130	122	88	165	53	163	5	1,208
19	A. W. Vann, Indian Head, Sask.	W.W.....	113	*136	137	150	151	232	163	130	193	177	4	1,586
Total.....														19,594

\*—Production of more than one bird.  
D—Dead but not substituted.

## SASKATCHEWAN EGG LAYING CONTEST, INDIAN HEAD.

## TABLE SHOWING PRODUCTION COSTS

Feed with cost, eggs and value, gain and cost per dozen in 1920-21

Pen number	Scratch grain	Meal mixture	Grit	Shell	Char-coal	Total cost	Eggs laid	Value	Loss	Gain	Cost per dozen
	lbs.	lbs.	lbs.	lbs.	lbs.	\$ c.		\$ c.	\$ c.	\$ c.	c.
2	554	228.5	11.0	16.5	8.0	19 52	1,297	41 62	.....	22 10	18
3	554	256.0	13.0	18.0	15.0	20 59	1,074	31 47	.....	10 88	23
4	569	262.0	12.0	15.5	9.5	20 62	1,488	47 90	.....	27 28	16
5	604	269.0	16.5	16.0	17.0	21 83	1,247	38 63	.....	16 80	21
6	585	234.0	9.5	11.5	11.0	20 24	1,095	37 75	.....	17 51	22
7	575	267.0	9.0	15.5	15.5	21 21	1,272	42 18	.....	20 97	20
8	546	258.5	8.5	15.5	12.0	20 18	1,344	45 01	.....	24 83	18
9	601	207.0	12.0	17.5	11.5	19 78	1,208	37 13	.....	17 35	20
10	551	221.0	3.5	14.0	2.5	18 70	1,129	35 14	.....	16 44	20
12	597	260.0	7.5	14.0	5.5	21 42	1,329	42 79	.....	21 37	19
13	616	251.0	7.5	12.5	4.0	21 13	726	25 90	.....	4 77	35
15	674	251.0	2.0	15.0	11.0	22 43	1,483	47 69	.....	25 26	18
16	661	258.0	11.0	17.0	9.5	22 63	1,093	33 62	.....	10 99	24
17	642	190.0	2.5	10.0	3.0	19 61	1,015	34 70	.....	15 09	23
18	618	214.0	6.0	15.0	19.0	20 70	1,208	39 37	.....	18 67	21
19	678	237.0	10.0	14.0	19.5	22 74	1,586	51 62	.....	28 88	17
Total	9,625	3,864	141.5	237.5	173.5	333 33	19,594	632 51	.....	299 19	.....
Average	601.5	241.5	8.8	15.0	10.8	20 83	1,224.6	39 53	.....	18 69	20

## ALBERTA EGG LAYING CONTEST.

## LIST OF ENTRANTS.

With individual and total production 1920-21.

Pen	Owner and Address	Variety	Bird No.										Floor	Total
			1	2	3	4	5	6	7	8	9	10		
1	W. Northcott, Beddington, Alta.	B.R.	156	142	85	134	133	D 78	135	117	167	130	21	1,318
2	A. W. Fraser, Medicine Hat, Alta.	B.R.	97	180	129	72	86	97	128	218	136	138	18	1,299
3	Coleman & Son, Lethbridge, Alta.	B.R.	163	166	229	142	120	136	101	197	142	155	9	1,560
4	C.P.R. Demonstr. m, Strathmore, Alta.	B.R.	45	180	199	125	246	178	102	69	162	148	15	1,469
5	Mrs. W. Dow, Veteran, Alta.	B.R.	139	148	135	181	68	175	D 75	132	23	127	27	1,230
6	F. Edwards, Edmonton, Alta.	B.R.	193	172	132	146	181	127	158	166	178	203	12	1,668
7	Westbrook Bros., Lethbridge, Alta.	B.R.	D125	102	168	81	185	181	133	207	142	168	10	1,502
8	H. V. Grainger, Calgary, Alta.	S.C.	182	* 75	124	.....	79	91	224	9	98	119	18	1,019
9	G. Jones, Lethbridge, Alta.	R.I.R.	115	123	65	148	168	136	90	162	174	118	6	1,305
10	Patrick Lee, Royalist, Alta.	R.I.R.	81	104	119	108	145	131	103	100	96	86	13	1,086
11	C.P.R. Demonstr. Farm, Strathmore, Alta.	S.C.	111	132	120	72	* 92	161	175	198	105	184	17	1,367
12	Sunalta P. Yards, Calgary, Alta.	R.C.A.	170	115	110	125	155	46	142	27	3	144	7	1,044
13	H. C. Graham, Lethbridge, Alta.	S.C.A.	155	125	140	110	113	176	126	146	176	130	10	1,407
14	Alex. Masson, Lethbridge, Alta.	S.C.A.	134	144	111	130	168	140	169	103	96	177	14	1,386
15	J. Heintz, Lethbridge, Alta.	S.C.A.	65	145	109	149	125	174	136	121	89	94	9	1,216
16	F. Enderton, Lethbridge, Alta.	S.C.A.	80	156	207	212	118	124	153	152	111	177	10	1,500
17	E. H. Young & Son, DeWinton, Alta.	S.C.W.L.	122	121	118	142	98	77	45	103	105	137	8	1,076
18	J. & N. Gurr, Lethbridge, Alta.	S.C.W.L.	69	107	152	D 66	86	68	115	92	99	D 71	4	929
19	V. Erickson, Dunmore, Alta.	S.L.W.	89	144	89	26	93	143	106	38	146	99	7	980
20	D. P. Carlyle, Lethbridge, Alta.	B.O.	*163	165	86	117	73	104	164	125	91	126	10	1,224
21	Exp. Station, Lethbridge, Alta.	B.R.	220	188	166	199	167	238	191	204	162	191	5	1,931
Total														27,516

\* Production of more than one bird.  
D Dead but not substituted.

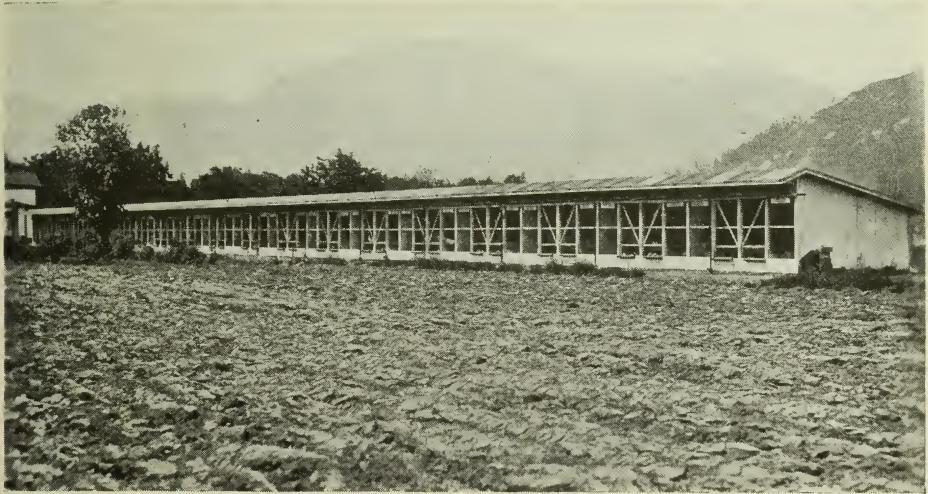


## ALBERTA EGG LAYING CONTEST, LETHBRIDGE.

## TABLE SHOWING PRODUCTION COSTS.

Feed with cost, eggs and value, gain and cost per dozen in 1920-21.

Pen Number	Scratch grains	Meal mixture	Beef scrap	Green feed	Milk	Grit	Shell	Charcoal	Total cost	Eggs laid	Value	Loss	Gain	Cost per dozen
	lbs.	lbs.	lbs.	lbs.	lbs.	lbs.	lbs.	lbs.	\$ c.		\$ c.	\$ c.	\$ c.	cts.
1.....	592-0	408	69-75	185	8	13-25	29-25	12-75	35 74	1,318	57 12	.....	21 38	32
2.....	589-0	401	69-75	185	8	12-5	27-75	12-75	35 48	1,299	56 04	.....	20 56	32
3.....	598-0	418	69-75	185	8	13-0	29-0	12-75	36 22	1,560	70 40	.....	34 18	28
4.....	605-25	396	69-75	185	8	13-25	28-25	12-25	35 86	1,469	70 11	.....	34 25	29
5.....	567-0	376	69-75	185	8	12-5	25-75	12-25	34 10	1,230	57 30	.....	23 20	33
6.....	619-5	400	69-75	185	8	13-5	29-5	13-0	36 44	1,668	81 36	.....	44 82	26
7.....	612-5	417	69-75	185	8	17-25	31-0	12-5	36 66	1,502	66 12	.....	29 46	29
8.....	594-75	691	69-75	185	8	13-0	26-5	12-75	35 35	1,019	53 23	.....	17 88	41
9.....	620-5	408	69-75	185	8	12-5	29-0	13-0	36 65	1,305	61 23	.....	24 58	32
10.....	605-75	381	69-75	185	8	12-5	26-75	12-5	35 14	1,086	50 30	.....	15 16	38
11.....	623-75	418	69-75	185	8	12-5	30-0	12-75	36 99	1,367	65 48	.....	28 49	32
12.....	443-0	298	69-75	185	8	12-5	21-75	12-5	28 15	1,044	49 29	.....	21 14	31
13.....	477-25	342	69-75	185	8	12-5	27-0	12-5	30 63	1,407	70 19	.....	39 56	26
14.....	473-75	346	69-75	185	8	12-5	27-0	12-5	30 63	1,386	63 70	.....	33 07	27
15.....	465-75	343	69-75	185	8	12-5	28-0	12-75	30 35	1,216	52 70	.....	22 44	29
16.....	459-0	355	69-75	185	8	12-5	26-0	12-5	30 46	1,500	67 96	.....	37 50	24
17.....	455-75	355	69-75	185	8	12-5	26-0	12-5	30 20	1,076	44 88	.....	14 68	32
18.....	459-5	344	69-75	185	8	12-5	25-0	12-5	30 00	929	39 85	.....	9 85	39
19.....	568-0	403	69-75	185	8	12-5	29-0	12-5	35 07	980	39 45	.....	4 38	43
20.....	619-25	409	69-75	185	8	13-0	29-75	12-5	36 89	1,224	59 11	.....	22 22	36
21.....	641-25	419	69-75	185	8	13-0	32-0	12-75	37 51	1,931	96 90	.....	59 39	22
Total.....	11,690-5	8,328	1,464-75	3,885	168	271-75	584-25	264-75	714 52	27,516	1,272-81	.....	558 19	
Average.....	556-5	396-5	69-5	185	8	13-0	27-8	12-5	34 02	1,310-3	60 61	.....	26 59	31



Agassiz, B.C., Contest House—Front View.

## BRITISH COLUMBIA EGG LAYING CONTEST.

## LIST OF ENTRANTS.

With individual and total production 1920-21.

Pen	Owner and Address	Variety	Bird No.										Floor	Total
			1	2	3	4	5	6	7	8	9	10		
1	Dom. Exp. Farm, Agassiz, B.C.	W.L....	193	191	248	189	187	179	205	257	162	226	33	2,070
2	Old People's Home, Vancouver, B.C.	W.L....	181	204	223	*221	255	146	192	169	200	204	32	2,027
4	R. S. Jackson, Duncan, B.C.	W.L....	261	153	194	*206	223	*216	226	213	198	236	29	2,155
5	W. J. Bradley, Langford, B.C.	W.L....	239	200	171	140	169	144	260	171	240	146	25	1,905
6	I. I. Blackburne, Salmon Arm, B.C.	W.L....	154	106	166	192	161	121	148	169	162	148	71	1,598
7	W. D. Bruce, Pitt Meadows, B.C.	W.L....	207	197	233	46	210	175	231	D107	245	221	12	1,884
8	W. & F. M. Tozer, Milner, B.C.	W.L....	164	127	149	139	180	143	189	222	235	181	23	1,752
9	P. Darbey & Son, Port Hammond, B.C.	W.L....	189	246	194	232	*213	208	207	217	221	224	45	2,196
10	J. O. M. Thackeray, Chilliwack, B.C.	W.L....	238	207	187	196	152	182	174	128	201	105	27	1,797
11	R. H. Graham, Langley Prairie, B.C.	W.L....	193	250	248	283	211	214	204	*173	200	248	23	2,247
12	A. Unsworth, Sardis, B.C.	W.L....	*182	173	123	200	197	260	203	206	200	186	15	1,945
13	G. F. Henley, Agassiz, B.C.	W.L....	124	163	258	228	179	222	226	184	164	208	41	1,997
14	Mrs. S. Raby, Sardis, B.C.	B.L....	69	134	151	154	188	119	121	155	157	157	53	1,458
15	T. H. Braim, Sardis, B.C.	B.A....	125	190	143	219	180	156	194	152	207	140	20	1,726
16	A. Cant, Appledale, B.C.	W.W....	256	147	212	179	180	230	203	196	197	227	83	2,110
17	Geo. D. Adams, Langley Prairie, B.C.	W.W....	116	158	*121	158	213	124	197	194	120	107	24	1,532
18	A. S. Huntingford, Agassiz, B.C.	W.W....	176	254	214	129	187	214	230	207	181	218	75	2,085
19	Dom. Exp. Farm, Summerland, B.C.	W.W....	185	127	153	222	221	177	235	186	141	138	24	1,809
20	Glen Bros., Armstrong, B.C.	W.P.R.	110	D175	227	158	238	186	189	99	199	126	34	1,741
21	White Bird P. Yards, Vancouver, B.C.	R.I.W. R.C.	209	139	136	D 76	180	176	218	114	132	138	57	1,575
22	W. J. Mannix, North Bend, B.C.	R.I.R.	128	194	171	136	199	186	154	206	222	107	111	1,814
23	D. Russell, Julilee, B.C.	S.C. R.I.R.	154	235	134	131	171	150	147	D125	159	203	55	1,664
24	C. W. Robbins, Chilliwack, B.C.	B.O....	249	57	D108	91	D162	136	202	190	113	88	52	1,448
25	H. E. Waby, Enderby, B.C.	B.P.R.	137	127	183	D 41	103	41	162	161	97	D 68	34	1,154
26	H. Wilkinson, Collingwood, E., B.C.	B.P.R.	215	161	161	140	260	173	193	262	231	148	28	1,972
27	Dom. Exp. Farm, Agassiz, B.C.	B.P.R.	223	206	230	50	187	230	*185	184	218	251	115	2,079
Total.....														47,740

\* Production of more than one bird.  
D Dead but not substituted.

## BRITISH COLUMBIA EGG LAYING CONTEST, AGASSIZ.

TABLE SHOWING PRODUCTION COSTS.

Feed with cost, eggs and value, gain and cost per dozen in 1920-21.

Pen Number	Scratch grain	Meal mixture	Green feed	Milk	Grit	Shell	Total cost	Eggs laid	Value	Loss	Gain	Cost per dozen
	lbs.	lbs.	lbs.	lbz.	lbs.	lbs.	\$ c.		\$ c.	\$ c.	\$ c.	cts.
1	541-0	349	692	828	7	41-5	37 33	2,070	69 30		31 97	21
2	537-0	374	692	828	7	45-5	38 16	2,027	68 65		30 49	22
4	557-0	300	692	828	7	37-5	36 35	2,155	76 86		40 51	21
5	561-0	342	692	828	7	36-5	37 53	1,905	65 06		27 53	23
6	558-0	277	692	828	7	47-5	36 52	1,598	50 01		13 49	27
7	546-0	366	692	828	7	41-5	38 09	1,884	65 49		27 40	24
8	541-0	464	692	828	7	41-0	39 94	1,752	54 04		14 10	27
9	546-5	448	692	828	7	38-0	39 66	2,196	77 26		37 60	21
10	532-0	380	692	828	7	41-5	38 18	1,797	61 55		23 37	25
11	539-0	391	692	828	7	39-0	37 55	2,247	74 92		37 37	20
12	535-5	391	692	828	7	47-5	38 71	1,945	67 08		28 37	24
13	537-0	319	692	828	7	42-5	36 39	1,997	67 77		31 38	22
14	516-0	243	692	828	7	28-0	34 44	1,458	46 42		11 98	28
15	514-0	368	692	828	7	32-5	36 61	1,726	53 96		17 35	25
16	554-5	389	692	828	7	38-5	39 26	2,110	73 69		34 43	22
17	546-0	327	692	828	7	32-5	36 86	1,532	54 45		17 59	29
18	550-5	513	692	828	7	42-5	43 11	2,085	70 04		26 93	24
19	523-5	520	692	828	7	38-5	42 16	1,809	60 77		18 61	28
20	545-5	470	692	828	7	42-5	41 33	1,741	56 62		15 29	29
21	550-0	518	692	828	7	39-0	42 33	1,575	46 61		4 28	32
22	558-5	447	692	828	7	27-5	40 97	1,814	58 26		17 29	27
23	573-0	566	692	828	7	33-5	45 55	1,664	56 40		10 85	33
24	568-0	481	692	828	7	32-5	42 19	1,448	46 98	2 56	4 79	35
25	579-0	461	692	828	7	24-0	40 75	1,154	38 19			42
26	584-5	546	692	828	7	32-5	44 98	1,972	69 05		24 07	27
27	552-0	497	692	828	7	24-0	41 93	20 79	75 58		33 65	24
Total	142-46	10,747	17,992	21,528	182	967-5	1,026 88	47,740	1,605 01	2 56	580 69	26
Average	548	413-3	692	828	7	37-2	39 49	1,836-1	61 73		22 23	

## TABLE SHOWING PRODUCTION COSTS FOR ALL CONTESTS 1920-21

Average per pen (10 birds) feed consumed, cost, egg yield and cost of production for 1 year

Contest	Scratch grain	Meal mixture	Beef scrap	Green feed	Milk	Grit	Shell	Charcoal	Other feed	Total cost	Numbe Eggs laid	Value	Gain	Cost per dozen
	lbs.	lbs.	lbs.	lbs.	lbs.	lbs.	lbs.	lbs.	lbs.	\$ c.		\$ c.	\$ c.	c.
Canadian	461-3	239-0	16-6	620-0	439-0	22-7	26-6			24 82	1,451-5	63 12	38 12	20-5
Prince Edward Island	462-0	265-0	16-2	116-4	358-5	27-8	26-3			28 00	1,197-3	34 88	6 88	28-0
Nova Scotia	749-5	232-7	39-9	170-0		20-7	24-5			30 26	1,277-7	44 05	13 79	28-4
New Brunswick	717-0	375-0	15-2	153-0		14-1	39-2	9-0		34 65	1,521-3	60 59	25 94	27-2
Quebec	644-0	94-0	17-0	21-0	160-5		20-5	13-0		28 93	1,021-1	44 38	15 79	34-0
Ontario	470-0	224-0	15-8	485-0	700-0	28-5	27-5			25 06	1,478-2	64 95	39 89	20-0
Manitoba	369-0	292-5	2-5	63-0	199-0	22-5	26-5		4-0	20 92	1,224-6	43 18	22 26	18-1
Saskatchewan	601-5	241-5				8-8	15-0	10-8		20 83	1,224-6	39 53	18 69	20-4
Alberta	556-5	396-5	69-5	185-0	8-0	13-0	27-8	12-5		34 02	1,310-3	60 61	26 59	31-2
British Columbia	548-0	413-3		692-0	828-0	7-0	37-2			39 49	1,836-1	61 73	22 23	26-0
Total	5,578-0	2,773-8	192-9	2,505-4	2693-0	165-1	270-9	45-3	4-0	288 98	13,701-3	517 02	230 18	
Average	557-8	227-3	24-1	278-2	384-7	18-4	27-0	11-3	4-0	28 89	1,370-1	51 70	23 01	25-2

NOTES.—The cost of producing eggs in the 1920-21 contest was considerably lower than that of the previous year's contests.

The above figures are based on consumption of feed and number of eggs laid, and no attempt should be made to place a relative estimate commercially on the standing of the different varieties. The figures as shown for Barred Plymouth Rocks, White Leghorns, White Wyandottes, Single Comb Rhode Island Reds and Single Comb Anconas are fairly representative, and especially so for those varieties which appear in each contest. Any attempt to compare 97 pens of Barred Plymouth Rocks with one pen of any other variety would be, not only unfair, but quite misleading.



## WEIGHT COMPARISONS.

To compare the weight of the eggs laid by the different varieties in the contests of 1920-21 is not advisable, but for the most popular varieties, the Barred Plymouth Rocks laid the largest eggs.

The White Leghorns had many pens which laid eggs well up to standard, but on the other hand many birds of this variety laid eggs which weighed less than 24 ounces to the dozen.

An outstanding feature in connection with the weight of eggs laid by the Barred Plymouth Rocks was the small number of pullet eggs produced, yet in nearly every case where careful observations have been taken the birds started with small eggs but they soon attained the ability to produce eggs of standard size.

The White Leghorns were somewhat slower to reach the standard weight in eggs produced. The Anconas were similar to the White Leghorns in size of eggs. The Rhode Island Reds laid eggs above standard weight and of excellent colour and uniform shape. Lack of uniformity, especially in shape and colour of eggs produced was a characteristic of the White Wyandottes. Some of the birds laid good sized eggs while others laid eggs which were undersized.

## MORTALITY LIST 1920-21 CONTESTS

	Pens	Deaths	Per cent
Canadian.....	50	104	20.8
Prince Edward Island.....	25	16	6.4
Nova Scotia.....	22	39	17.7
New Brunswick.....	21	23	10.7
Quebec.....	20	13	6.5
Ontario.....	24	39	16.2
Manitoba.....	23	20	8.7
Saskatchewan.....	16	14	8.7
Alberta.....	21	8	3.8
British Columbia.....	27	16	5.9
Total.....	237	292	12.3

NOTES—As was the case the previous year two causes were responsible for most of the deaths. These were first—colds which later developed into roup, and second—reproductive system disorders. Roup in its various forms being extremely difficult to overcome and even more difficult to exterminate very often affects the entire pen when it once enters, and even though some birds have considerable resisting powers and appear to become only slightly affected, others either succumb to the disease or become so weakened as to very materially decrease the egg yield.

During the month of July, 1921, the death rate in the Canadian and Ontario Contests was abnormally high due to the unusual heat. Many of the contest birds became suffocated while on the trapnests. Every attempt was made to offset this danger, but even with the increased effort the death rate was high. During July alone 32 deaths took place in the Canadian Contest. As many as seven birds died in one day from the extreme heat.

The Nova Scotia Contest birds suffered in much the same way as did those at Ottawa, which accounts for the high death rate in that contest.

## PART III.

**THIRD ANNUAL CANADIAN NATIONAL EGG LAYING CONTEST  
1921-22.**

A third series of Egg Laying Contests were conducted by the Experimental Farm's Branch of the Department of Agriculture, starting November 1, 1921, and ending October 30, 1922. A laying contest was conducted in each province in Canada, and the Canadian Contest was held at the Central Farm, Ottawa. There was an increase in the number of pens entered over the previous year, and the total aggregate of birds entered for these contests was 2,590. The names and locations of the contests were as follows:—

## CANADIAN CONTEST.

Canadian Egg Laying Contest,  
Experimental Farm, Ottawa, Ont.

## PROVINCIAL CONTESTS.

Prince Edward Island Egg Laying Contest,  
Experimental Station, Charlottetown, P.E.I.

Nova Scotia Federal Egg Laying Contest,  
Experimental Farm, Nappan, N.S.

New Brunswick Egg Laying Contest,  
Experimental Station, Fredericton, N.B.

Quebec Eastern Egg Laying Contest,  
Experimental Station, Ste. Anne de la Pocatiere, Que.

Quebec Western Egg Laying Contest,  
Experimental Station, Lennoxville, Que.

Ontario Egg Laying Contest,  
Experimental Farm, Ottawa, Ont.

Manitoba Egg Laying Contest,  
Experimental Farm, Brandon, Man.

Saskatchewan Egg Laying Contest,  
Experimental Farm, Indian Head, Sask.

Alberta Egg Laying Contest,  
Experimental Station, Lethbridge, Alta.

British Columbia Egg Laying Contest,  
Experimental Farm, Agassiz, B.C.

## CANADIAN EGG LAYING CONTEST.

## LIST OF ENTRANTS.

With individual and total production 1921-22.

Pen	Owner and Address	Variety	Bird No.										Floor	Total
			1	2	3	4	5	6	7	8	9	10		
1	J. R. Stork, St. Catharines, Ont.	B.R.	*188	159	115	*176	*149	194	168	176	202	154	.....	1,681
2	Rev. H. A. E. Clarke, Maberly, Ont.	B.R.	*96	*124	110	*134	126	109	155	239	197	191	.....	1,481
3	G. E. Hall, Trafalgar, Ont.	B.R.	*157	239	71	223	237	166	192	231	152	250	.....	1,903
4	Mrs. H. Poehlman, Collingwood, Ont.	B.R.	228	147	217	129	*208	223	173	240	88	186	.....	1,839
5	Mitchell Bros, Landsowne, Ont.	B.R.	199	173	230	171	122	169	195	157	178	115	.....	1,709
6	M. T. Armitage, Sherbrooke, Que.	B.R.	140	138	167	116	155	*151	165	48	96	179	.....	1,355
7	Invicta Farm, Oromocto, N.B.	B.R.	233	218	65	207	173	226	135	192	182	199	.....	1,830
8	W. E. B. Tait, Dorchester, N.B.	B.R.	192	193	186	229	171	*210	125	197	227	168	.....	1,898
9	W. J. Johnston, Meaford, Ont.	B.R.	227	229	204	207	199	223	203	200	161	134	.....	1,987
10	F. J. French, Newmarket, Ont.	B.R.	238	107	231	250	156	179	187	209	244	191	.....	1,992
11	Miss M. Holdsworth, Port Hope, Ont.	B.R.	217	170	*248	187	187	180	212	*42	202	*159	.....	1,804
12	Elmhurst Poultry Farm, Montreal-West, Que.	B.R.	*160	122	133	235	177	228	*118	136	*206	171	.....	1,686
13	F. Ferguson, St. Louis, Mo., U.S.A.	B.R.	*214	140	192	205	212	123	200	173	194	186	.....	1,837
14	A. Hamburger, Webster Grove, Mo., U.S.A.	B.R.	*270	*216	230	185	*190	271	230	204	150	172	.....	2,118
15	H. E. Dennison, East Lansing, Mich., U.S.A.	B.R.	*196	274	155	220	221	*191	221	*156	215	167	.....	2,016
16	Culps Poultry Farm, Berkeley, Ont.	B.R.	281	277	276	238	206	181	248	174	152	164	.....	2,197
17	Neff Bros, Simcoe, Ont.	B.R.	169	*171	176	244	282	175	140	160	198	127	.....	1,846
18	W. E. L. Coleman, Ottawa, Ont.	B.R.	112	175	157	113	194	124	116	148	132	146	.....	1,417
19	J. R. Baker, Batteau, Ont.	B.R.	211	178	171	182	*162	*117	147	D 10	97	184	.....	1,459
20	Mich Poultry Farm, East Lansing, Mich., U.S.A.	B.R.	202	160	232	*141	134	187	240	156	160	146	.....	1,758
21	John T. Duncan, Brussels, Ont.	S.C.	210	173	169	*213	139	204	158	174	149	158	.....	1,747
22	Mrs. C. H. Moore, Dundas, Ont.	S.C.	82	143	139	71	114	*192	203	171	*114	27	.....	1,256
23	D. D. Dowding, Howick, Que.	R.I.R.	197	206	186	148	102	*97	162	179	186	149	.....	1,612
24	H. E. Dennison, East Lansing, Mich., U.S.A.	W.W.	128	92	172	160	*139	*149	116	149	*151	97	.....	1,353
25	A. Scharf, Cummings Bridge, Ont.	W.W.	178	134	190	155	116	196	140	150	95	136	.....	1,490
26	C. W. Robbins, Chilliwack, B.C.	B.O.	161	114	116	143	61	*131	172	D 41	D 51	D 34	.....	1,024
27	G. and W. Ratz, Tavistock, Ont.	R.C.A.	159	*168	181	203	199	172	145	*195	215	*155	.....	1,792
28	G. and W. Ratz, Tavistock, Ont.	S.C.A.	133	*115	134	117	169	*128	124	160	172	*117	.....	1,369
29	Dr. J. A. Stewart, Montreal, Que.	S.C.A.	160	137	185	168	86	110	136	150	176	128	.....	1,436
30	L. W. Armstrong, Minesing, Ont.	S.C.A.	108	121	*135	164	137	188	151	181	147	166	.....	1,498
31	N. H. Gamp, New Hamburg, Ont.	S.C.A.	179	189	*97	*195	134	117	163	147	202	152	.....	1,575
32	T. H. Braim, Sardis, C.	B.A.	183	137	200	140	148	118	183	190	175	169	.....	1,643
33	Elmhurst Poultry Farm, Montreal-West, Que.	W.L.	146	115	177	103	*182	*143	*112	131	*206	213	.....	1,528
34	G. S. Dundas, Markdale, Ont.	W.L.	190	142	183	211	201	*107	196	192	231	*107	.....	1,760
35	Mountain View Poultry Farm, Rutland, Vt., U.S.A.	W.L.	100	166	114	*174	110	192	176	104	135	200	.....	1,461
36	Dr. I. H. Ante, Richmond Hill, Ont.	W.L.	.....	194	*159	161	127	139	173	169	.....	176	.....	1,298
37	Lewis N. Clark, Port Hope, Ont.	W.L.	265	294	*291	178	*249	275	226	*197	270	253	.....	2,498
38	C. A. Wood, Peterboro, Ont.	W.L.	143	152	149	199	133	150	147	221	231	150	.....	1,675
39	P. Darbey & Son, Hammond, B.C.	W.L.	*119	*164	238	*150	180	D 48	174	193	*150	200	.....	1,616
40	W. M. Alcorn, Port Hammond, B.C.	W.L.	70	231	150	*82	117	221	179	184	117	*196	.....	1,547
41	Russell Sulley, Courtice, Ont.	W.L.	190	203	198	198	233	*181	145	173	153	198	.....	1,872
42	J. M. Thompson, Napanee, Ont.	W.L.	191	200	139	233	186	177	199	208	160	*164	.....	1,857
43	Dr. J. A. Stewart, Montreal, Que.	W.L.	204	173	131	170	142	178	214	63	15	148	.....	1,438



## CANADIAN EGG LAYING CONTEST.

## LIST OF ENTRANTS—Concluded

With individual and total production 1921-22. .Concluded

Pen	Owner and Address	Variety	Bird No.										Floor	Total
			1	2	3	4	5	6	7	8	9	10		
44	John Watson, Howick, Que.	W.L....	153	224	131	189	* 53	*185	185	110	169	223	.....	1,622
45	J. R. McMullen, Port Dover, Ont.....	W.L....	133	198	200	175	211	139	201	193	164	163	.....	1,777
46	Dr. W. B. Linscott, Brant- ford, Ont.....	W.L....	195	*158	176	167	188	122	183	136	140	152	.....	1,617
47	G. E. Hall, Trafalgar, Ont.	W.L....	186	*132	218	219	155	179	178	116	184	189	.....	1,756
48	W. J. Richardson, Caledo- nia, Ont.....	W.L....	226	103	4	126	180	199	168	*190	152	.....	1,348	
49	J. W. Butler, Pointe aux Trembles.....	W.L....	*135	145	191	177	143	142	177	231	155	152	.....	1,648
50	C. G. Ream, Lancaster, Pe., U.S.A.....	W.L....	155	182	181	138	148	157	157	159	114	223	.....	1,614
51	Credit Vale Poultry Farm, Streetsville, Ont.....	W.L....	38	69	178	*158	116	*144	*126	D139	114	130	.....	1,212
52	J. S. Westmoreland, Guelph, Ont.....	W.L....	203	*168	*175	170	222	*196	*152	116	*207	*187	.....	1,796
53	I. I. Blackourne, Salmon Arm, B.C.....	W.L....	243	248	196	243	139	168	133	71	158	148	.....	1,747
54	Ontario Agricultural Col- lege, Guelph, Ont.....	W.L....	197	204	*217	98	244	215	141	181	233	195	.....	1,925
55	Exp. Farm, Ottawa, Ont.	W.L....	192	175	*193	*224	200	213	213	209	208	233	.....	2,060
56	Ontario Agricultural Col- lege, Guelph, Ont.....	B.R....	183	80	236	233	195	252	123	215	206	239	.....	1,962
57	Exp. Farm, Lethbridge, Alta.....	B.R....	235	154	196	153	*134	*155	25	104	214	D172	.....	1,542
58	Dept. Agriculture Edmon- ton, Edmonton.....	B.R....	163	209	219	102	235	118	*140	121	152	*185	.....	1,644
59	Exp. Farm, Ottawa, Ont.	B.R....	180	184	198	154	*135	218	27	122	111	109	.....	1,438
60	Exp. Farm, Sidney, B.C.	W.W....	98	*181	63	110	177	162	91	195	183	150	.....	1,410
Total.....													.....	100,281

\*—Production of more than one bird.  
D—Dead but not substituted.

## CANADIAN EGG LAYING CONTEST, OTTAWA.

## TABLE SHOWING PRODUCTION COSTS.

Feed with cost, eggs and value, gain and cost per dozen in 1921-22.

Pen number	Scratch grain	Meal mixture	Meat feed	Green feed	Milk	Grit	Shell	Total cost	Eggs laid	Value	Gain	Cost per dozen
	lbs.	lbs.	lbs.	lbs.	lbs.	lbs.	lbs.	\$ c.	\$ c.	\$ c.	\$ c.	c.
1.....	533.0	219.75	41.25	241	650	22.25	72.75	24 30	1,681	64 57	40 27	17.2
2.....	522.25	213.25	37.50	241	650	39.0	51.75	23 53	1,481	60 38	36 85	19.2
3.....	540.0	234.25	26.0	241	650	23.75	60.0	23 76	1,908	76 22	52 46	14.8
4.....	555.0	180.25	37.75	241	650	2x.0	67.50	23 58	1,839	70 96	47 38	15.3
5.....	503.25	286.00	50.0	241	650	51.50	83 50	26 04	1,709	62 20	36 16	18.2
6.....	509.5	290.75	39.0	241	650	33.50	73.0	25 37	1,355	49 09	23 72	22.8
7.....	510.25	212.0	46.75	241	650	24.75	51.50	23 74	1,830	75 35	51 61	15.6
8.....	537.25	283.0	51.0	241	650	47.25	69.50	26 58	1,898	72 05	45 47	16.8
9.....	505.75	327.25	46.75	241	650	41.0	56.25	26 45	1,987	81 76	55 15	15.6
10.....	517.50	317.0	45.50	241	650	33.0	50.50	28 24	1,992	79 39	51 51	16.8
11.....	547.0	228.75	52.0	241	650	24.75	58.0	26 69	1,804	72 17	45 48	17.7
12.....	531.25	296.25	45.0	241	650	39.0	60.75	28 07	1,686	67 47	39 40	19.9
13.....	524.75	230.0	43.0	241	650	13.25	52.50	24 15	1,837	72 19	48 04	15.6
14.....	545.0	218.75	33.75	241	650	24.50	36.75	25.03	2,118	84 80	59 77	14.1
15.....	528.25	274.75	42.25	241	650	19.75	42.50	25 18	2,016	86 81	61 63	14.8
16.....	518.0	231.50	52.0	241	650	46.50	73.75	26 47	2,197	88 33	61 86	14.4
17.....	522.50	237.25	44.50	241	650	20.25	44.25	24 36	1,846	76 97	52 61	15.6
18.....	526.75	198.0	46.25	241	650	37.25	43.0	23 77	1,417	51 58	27 81	20.0
19.....	531.25	226.25	45.50	241	650	25.0	44.50	24 40	1,459	60 69	36 29	20.0
20.....	526.0	238.25	45.50	241	650	17.75	67.50	24 73	1,758	67 46	42 73	16.8
21.....	516.75	299.25	25.50	241	650	52.25	57.0	24 91	1,747	67 73	42 82	16.8
22.....	501.0	209.75	32.0	241	650	14.0	32.0	22 37	1,256	48 93	26 56	20.4
23.....	520.0	198.0	25.25	241	650	27.25	46.25	22 36	1,612	67 25	44 89	16.8
24.....	488.0	232.75	28.25	241	650	19.0	34.50	28 93	1,353	52 16	23 23	25.2
25.....	542.0	199.0	31.25	241	650	36.0	42.0	23 22	1,490	57 14	33 92	18.7
26.....	513.0	210.25	36.75	241	650	22.50	53.25	24 50	1,024	39 53	15 03	28.8
27.....	473.75	170.0	32.75	241	650	11.50	46.0	20 98	1,392	71 65	50 67	13.9
28.....	454.0	188.75	23.50	241	650	7.25	37.0	20 38	1,769	51 35	30 97	18.0
29.....	430.0	178.75	28.25	241	650	21.75	38.50	20 05	1,436	54 62	34 57	18.0
30.....	432.0	190.25	32.50	241	650	28.0	37.0	20 67	1,498	56 58	35 91	16.5
31.....	478.0	181.25	24.75	241	650	15.0	39.0	20 16	1,575	67 38	47 22	15.3
32.....	487.0	246.50	37.25	241	650	38.0	51.75	22 49	1,643	61 35	38 86	16.4
33.....	481.0	231.75	33.0	241	650	29.25	38.50	24 09	1,528	59 64	35 55	18.0
34.....	493.5	270.5	27.75	241	650	15.50	42.0	23 21	1,760	71 74	48 53	15.6
35.....	501.5	250.75	40.50	241	650	35.0	47.0	24 08	1,461	61 70	37 62	19.8
36.....	485.25	192.50	27.0	241	650	21.25	29.25	21 37	1,298	49 09	27 72	19.6
37.....	480.50	235.75	31.50	241	650	17.0	50.50	22 49	2,498	103 27	80 78	10.8
38.....	456.75	232.25	25.25	241	650	24.75	48.75	22 45	1,675	62 15	39 70	16.0
39.....	491.0	174.5	21.0	241	650	23.0	42.25	20 88	1,616	64 99	44 11	15.4
40.....	511.5	204.25	29.0	241	650	43.0	52.0	23 97	1,547	60 64	36 67	18.6
41.....	483.50	273.25	29.75	241	650	32.75	56.75	23 71	1,872	71 38	47 67	15.3
42.....	495.75	196.0	18.50	241	650	16.0	51.25	22 55	1,857	72 34	49 79	14.4
43.....	479.0	183.50	14.25	241	650	18.50	33.75	21 61	1,438	54 28	32 67	18.0
44.....	491.5	187.50	27.50	241	650	25.0	35.75	21 62	1,622	66 83	45 21	15.9
45.....	493.75	178.50	31.50	241	650	18.0	39.50	21 56	1,777	67 03	45 47	14.4
46.....	442.0	241.50	29.75	241	650	49.0	48.25	23 63	1,617	59 00	35 37	17.5
47.....	502.5	208.75	22.75	241	650	26.75	38.50	21 96	1,756	64 54	42 58	15.0
48.....	462.75	234.50	32.25	241	650	38.0	36.0	22 35	1,348	52 44	30 09	19.9
49.....	461.25	220.0	21.75	241	650	28.50	37.50	21 32	1,648	63 49	42 17	15.0
50.....	441.25	253.5	18.25	241	650	32.75	39.75	23 04	1,614	60 69	37 65	17.0
51.....	447.75	144.75	17.0	241	650	21.75	25.25	19 72	1,212	46 84	27 12	19.2
52.....	473.0	272.25	16.25	241	650	25.0	41.0	24 13	1,796	69 83	45 70	16.8
53.....	467.50	268.75	23.50	241	650	52.75	36.75	22 84	1,747	71 92	49 08	15.6
54.....	453.25	243.0	30.25	241	650	26.75	34.50	22 15	1,925	73 85	51 70	13.8
55.....	476.50	240.25	26.0	241	650	28.75	38.75	22 37	2,060	81 84	59 47	12.9
56.....	526.75	274.0	35.25	241	650	43.75	38.50	26 53	1,962	78 51	51 98	16.2
57.....	545.25	250.5	32.75	241	650	31.50	34.50	24 41	1,542	62 30	37 89	15.9
58.....	541.0	264.0	35.25	241	650	56.50	35.25	24 32	1,644	66 21	41 89	17.7
59.....	555.5	186.25	36.75	241	650	46.0	32.25	23 50	1,438	55 01	31 51	19.2
60.....	506.75	259.0	35.50	241	650	43.75	43.75	24 20	1,410	55 99	31 79	20.4
Total.....	30,017.50	13,819.75	1,999.0	14,460	39,000	1,771.0	2,801.75	1,415 52	100,281	3,943 65	2,528 13	.....
Average.....	500.25	230.3	33.3	241	650	29.5	46.69	23.59	16 71	65 72	42 13	17.0

PRINCE EDWARD ISLAND EGG LAYING CONTEST.

LIST OF ENTRANTS.

With individual and total production 1921-22.

Pen	Owner and Address	Variety	Bird No.										Floor	Total
			1	2	3	4	5	6	7	8	9	10		
1	Mrs. D. J. Carmichael, Peakes.	W.L.	117	144	135	118	122	82	133	85	157	166	9	1,268
2	J. B. Millman, Kensington.	B.R.	167	171	178	205	168	175	124	* 81	138	143	9	1,559
3	H. S. Moase, Kensington.	W.L.	107	109	132	82	135	67	81	125	53	133	52	1,076
4	Harry Hyde, Cornwall.	B.R.	D 37	*113	113	D 75	56	*109	14	D 67	* 83	51	13	731
5	Mrs. F. Dingwell, Bear River.	W.L.	174	131	124	135	121	64	90	* 83	95	143	5	1,165
6	H. L. Machon, Murray Harbour.	B.R.	177	189	167	108	83	D 49	139	157	186	46	10	1,311
7	George T. Seymour, Bedeque.	W.L.	176	47	D 61	D	D 47	95	65	104	D 73	42	.....	710
8	George T. Seymour, Bedeque.	W.W.	80	D 30	D 38	D 73	D 53	91	D 40	* 53	110	D	2	570
9	Mrs. R. W. Bullpitt, Cardigan.	W.L.	199	111	128	165	190	127	119	140	180	185	18	1,562
10	Pendleton Bros, Suffolk.	B.R.	81	166	123	138	181	141	144	165	229	103	7	1,478
11	Everett Howatt, Tryon.	W.L.	103	215	133	196	200	*115	14	* 55	145	178	16	1,470
12	J. S. Schurman, North Bedeque.	W.L.	*156	134	182	138	105	180	176	185	92	*100	10	1,458
13	William Neale, Bear River.	W.L.	161	90	121	112	99	116	104	155	106	179	8	1,251
14	Mrs. J. J. McLennan, Grand River.	W.W.	190	138	126	D123	D134	139	134	144	65	115	6	1,314
15	Cornelius McLennan, Arlingington.	W.L.	98	68	125	39	52	170	89	58	93	D 52	16	860
16	F. W. Woolley, Bedeque.	W.L.	218	77	203	179	139	150	79	163	122	126	7	1,463
17	Mrs. R. G. McLaren, New Perth.	B.R.	64	135	176	115	122	163	189	140	125	118	13	1,360
18	Exp. Station, Charlottetown.	W.L.	140	145	111	162	163	163	160	*141	90	154	4	1,433
19	Exp. Station, Charlottetown.	W.L.	208	125	202	191	124	*130	175	157	91	167	10	1,580
20	Exp. Station, Charlottetown.	W.L.	162	158	157	141	170	141	170	130	161	157	6	1,553
Total.....												.....	25,172	

\*—Production of more than one bird.  
D—Dead but not substituted.

PRINCE EDWARD ISLAND EGG LAYING CONTEST, CHARLOTTETOWN.

TABLE SHOWING PRODUCTION COSTS.

Feed with cost, eggs and value, gain and cost per dozen in 1921-22.

Pen number	Scratch grain	Meal mixture	Green feed	Milk	Grit	Shell	Char-coal	Total cost	Eggs laid	Value	Loss	Gain	Cost per dozen
	lbs.	lbs.	lbs.	lbs.	lbs.	lbs.	lbs.	\$ c.		\$ c.	\$ c.	\$ c.	cts.
1.....	526	200	139	68	31-5	33-5	1-0	19 60	1,268	29 69	.....	10 09	18
2.....	634	294	140	68	39-5	40-0	1-5	25 01	1,559	37 47	.....	12 47	19
3.....	526	201	140	68	27-5	27-5	0-25	19 49	1,076	23 95	.....	4 46	21
4.....	561	196	140	68	26-5	22-5	0-25	20 26	731	16 56	3 70	.....	3
5.....	478	188	127	61	23-5	27-0	0-25	17 74	1,165	28 27	.....	10 53	18
6.....	568	223	140	68	38-5	36-0	1-0	21 43	1,311	31 03	.....	9 60	19
7.....	469	210	138	68	25-5	24-0	1-0	18 59	710	17 62	0 97	.....	31
8.....	437	212	140	68	16-5	22-0	0-25	17 76	570	15 13	2 63	.....	37
9.....	565	289	140	68	30-0	37-5	0-5	23 06	1,562	38 48	.....	15 42	17
10.....	601	304	140	68	29-5	37-0	0-50	24 30	1,478	36 51	.....	12 21	19
11.....	546	265	140	68	20-5	37-0	0-25	21 96	1,470	39 72	.....	17 76	17
12.....	567	247	139	68	28-5	37-0	1-5	22 00	1,458	36 82	.....	14 82	18
13.....	468	202	127	62	24-5	23-5	0-25	17 97	1,251	30 90	.....	12 93	17
14.....	596	255	140	68	33-5	32-0	1-0	22 92	1,314	33 11	.....	10 19	20
15.....	506	241	140	68	28-5	25-5	0-25	20 19	860	19 36	0-83	.....	28
16.....	536	247	138	68	28-5	34-0	1-5	21 02	1,463	38 09	.....	17 07	17
17.....	566	294	140	68	34-5	41-0	1-0	23 36	1,360	30 22	.....	6 86	20
18.....	540	257	136	68	24-5	32-5	0-25	21 38	1,433	35 20	.....	13 82	17
19.....	533	256	138	68	31-5	38-0	1-0	21 37	1,580	40 96	.....	19 59	16
20.....	547	269	140	68	36-5	38-0	0-75	22 16	1,553	37 42	.....	15 26	17
Total.....	10,770	4,850	2,762	1,347	579-5	645-5	14-25	421 57	25,172	616 51	8-13	203 08	
Average.....	538-5	242-5	138-1	67-3	28-9	32-2	0-7	21 07	1,258	30 82	.....	10 15	20



## NOVA SCOTIA EGG LAYING CONTEST.

## LIST OF ENTRANTS.

With individual and total production 1921-22.

Pen	Owner and Address	Variety	Bird No.										Floor	Total
			1	2	3	4	5	6	7	8	9	10		
1	E. N. Smith, Shinemacas, Bridge	B.R.	54	43	213	153	107	104	125	115	146	122	92	1,274
2	Lawson Lowe, Amherst	B.R.	167	113	127	213	90	156	173	217	129	D117	112	1,614
3	Exp. Station, Kentville	B.R.	D 69	146	114	142	175	D 5	D 1	D 82	188	75	67	1,064
4	Exp. Farm, Nappan	B.R.	*159	*101	182	219	174	153	*118	249	D129	* 54	53	1,591
5	Exp. Farm, Nappan	B.R.	148	D126	*116	171	*126	205	D111	D 90	67	* 90	74	1,324
6	Exp. Farm, Nappan	B.R.	D 41	198	*173	45	216	D 76	D 71	225	196	152	43	1,436
7	F. W. Black, Amherst	B.R.	99	200	105	197	177	162	127	140	201	178	49	1,635
8	Thos. Hooper, Truro, N.S.	W.W.	60	115	182	133	102	131	52	51	188	43	83	1,140
9	Exp. Farm, Nappan	B.R.	D125	190	227	100	150	D125	144	208	254	D 99	32	1,753
10	Miss H. W. Dunn, Upper Kennetook	B.R.	126	14	179	88	213	154	* 35	133	131	170	127	1,370
11	Mrs. E. Tuttle, Pugwash	B.R.	180	183	187	131	195	165	163	154	151	102	69	1,680
12	W. S. Anderson, Pugwash	B.R.	171	154	143	84	144	139	177	216	139	156	58	1,581
13	F. Cochrane, Amherst	B.R.	203	144	211	146	191	159	167	206	228	*190	70	1,915
14	W. G. Borrett, Darmouth	R.C.												
15	R. T. VanAmberg, Oxford	W.L.	55	74	129	144	112	98	98	*121	120	45	37	1,033
16	R. T. VanAmberg, Oxford	S.C.												
17	Parry & Sim, Billtown	W.L.	175	140	111	90	81	114	106	105	115	122	45	1,204
18	V. G. Fuller, Amherst	B.R.	161	130	103	105	D 1	98	D133	118	D 24	D121	15	1,009
19	F. Cochrane, Amherst	S.C.												
20	Exp. Station, Kentville	B.L.	157	138	152	140	152	159	76	47	141	108	50	1,321
		W.L.	149	8	149	155	179	D 6	128	133	122	125	115	1,269
		B.R.	141	D 77	191	102	108	*174	212	128	150	D	42	1,325
		B.R.	153	135	104	40	90	100	* 84	*132	* 89	*165	36	1,128
	Total													27,666

\*—Production of more than one bird.  
D—Dead but not substituted.

## NOVA SCOTIA EGG LAYING CONTEST, NAPPAN.

## TABLE SHOWING PRODUCTION COSTS.

Feed with cost, eggs and value, gain and cost per dozen in 1921-22.

Pen number	Scratch grain	Meal mixture	Meat feed	Green feed	Grit	Shell	Total cost	Eggs laid	Value	Gain	Cost per dozen
	lbs.	lbs.	lbs.	lbs.	lbs.	lbs.	\$ c.		\$ c.	\$ c.	cts.
1	648-0	337-0	48-0	147-0	28-0	68-0	30 39	1,274	37 00	6 61	28
2	656-5	410-5	47-5	147-0	23-0	34-5	30 06	1,614	50 05	19 99	22
3	610-0	250-5	66-0	143-5	25-0	27-5	25 98	1,064	31 27	4 35	29
4	613-0	375-5	49-0	148-0	20-0	29-0	28 00	1,591	55 95	22 95	21
5	624-0	434-5	76-5	148-0	22-0	23-5	31 66	1,324	42 00	10 34	31
6	617-5	416-5	77-5	148-0	19-5	32-5	31 24	1,436	45 94	14 70	26
7	635-0	346-5	54-0	148-0	22-0	41-0	28 46	1,635	49 54	21 08	20
8	581-5	249-5	28-0	148-0	17-0	30-5	22 60	1,140	32 87	10 27	23
9	630-0	428-5	37-0	148-0	22-0	31-5	29 03	1,753	57 58	28 55	19
10	616-5	405-5	39-0	148-0	27-0	30-5	28 46	1,370	39 63	11 17	24
11	654-0	406-5	67-5	148-0	38-0	58-5	32 09	1,680	49 53	17 44	22
12	672-0	380-5	72-0	147-5	30-0	42-0	31 17	1,581	55 47	19 30	23
13	650-5	411-5	52-0	147-5	38-0	45-0	30 32	1,915	61 94	31 62	18
14	520-5	247-5	32-5	147-5	16-5	23-5	25 67	1,033	29 54	8 87	24
15	535-5	289-5	35-5	147-5	11-0	22-0	23 30	1,204	35 29	11 99	23
16	557-5	272-5	45-5	147-5	16-0	27-5	23 29	1,009	30 11	6 82	27
17	552-0	284-5	38-5	147-5	20-0	21-5	22 86	1,321	39 30	16 44	20
18	579-0	409-5	43-5	147-5	20-0	33-0	27 25	1,269	37 94	10 69	25
19	605-0	359-5	40-0	147-5	19-0	35-5	26 08	1,325	42 66	16 58	23
20	632-0	293-5	54-0	147-5	22-0	27-0	25 98	1,128	35 43	9 45	27
Total	12,190-0	7,009-50	1,003-50	2,949-0	456-0	684-0	553 89	27,666	859 04	259 21	.....
Average	609-5	350-4	50-1	147-4	22-8	34-2	27 69	1,383	42 95	14 96	24

## NEW BRUNSWICK EGG LAYING CONTEST.

## LIST OF ENTRANTS.

With individual and total production 1921-22.

Pen	Owner and Address	Variety	Bird No.										Floor	Total
			1	2	3	4	5	6	7	8	9	10		
1	H. R. Emerson, Dorchester.	B.R.	182	* 83	119	89	108	121	204	184	108	55	5	1,253
2	Eugene Monahan, Elmsville.	B.R.	204	206	129	*181	155	131	152	171	*150	168	7	1,654
3	C. M. Peart, Havelock.	B.R.	*198	151	54	84	120	D 22	94	D 36	194	217	18	1,168
4	A. T. Reid, Rollingdam Station.	B.R.	234	192	231	D131	186	207	205	125	189	*151	12	1,863
5	Harry Patterson, Hoyt.	B.R.	132	191	207	87	112	125	141	87	59	193	2	1,336
6	R. A. Snowball, Chatham.	B.R.	211	118	147	165	117	177	84	58	169	.....	7	1,253
7	N. W. Eveleigh, Sussex.	B.R.	117	146	108	189	93	26	123	119	197	167	10	1,297
8	L. B. Johnston, Nashwakis.	B.R.	93	*124	211	167	134	196	121	133	117	*101	12	1,413
9	W. E. B. Tait, Dorchester.	B.R.	186	230	245	236	224	173	245	199	171	228	6	2,143
10	Allen & Ferguson, Fredericton.	B.R.	121	114	107	247	104	135	111	*130	203	116	10	1,398
11	G. E. Wilson, Centreville.	B.R.	D 13	133	152	176	96	189	143	143	224	152	4	1,425
12	R. A. Snowball, Chatham.	W.L.	186	220	162	94	188	157	D 23	84	*125	142	14	1,367
13	Mrs. Geo. Danby, North Devon.	W.W.	133	67	155	*130	151	142	186	134	107	209	16	1,429
14	N. W. Eveleigh, Sussex.	R.I.R.	162	130	D 72	102	35	D 34	129	90	60	100	11	925
15	David Rankin, Fredericton.	R.I.R.	193	111	145	188	124	88	185	87	134	209	7	1,471
16	Exp. Station, Fredericton.	W.W.	*111	118	142	75	118	D 40	*118	191	123	80	7	1,123
17	Exp. Station, Fredericton.	W.W.	101	185	189	153	139	* 41	71	* 95	173	188	18	1,353
18	Exp. Station, Fredericton.	B.R.	180	62	107	* 96	124	188	189	214	30	* 42	7	1,339
19	Exp. Station, Fredericton.	B.R.	147	131	188	78	* 96	159	116	40	11	195	4	1,165
20	Exp. Station, Fredericton.	B.R.	186	124	29	208	184	150	164	156	193	86	6	1,486
Total.....													27,886	

\*—Production of more than one bird.

D—Dead but not substituted.

## NEW BRUNSWICK EGG LAYING CONTEST, FREDERICTON.

## TABLE SHOWING PRODUCTION COSTS.

Feed with cost, eggs and value, gain and cost per dozen in 1921-22.

Pen Number	Scratch grain	Meal mixture	Beef scrap	Green feed	Milk	Grit	Shell	Charcoal	Total cost	Eggs laid	Value	Gain	Cost per dozen
	lbs.	lbs.	lbs.	lbs.	lbs.	lbs.	lbs.	lbs.	\$ c.		\$ c.	\$ c.	cts.
1.....	602	277	3	291	446	40-0	35-0	0-5	23 67	1,258	38 16	14 49	22
2.....	606	399	3	291	446	30-5	35-5	0-5	26 64	1,654	49 34	22 70	19
3.....	592	343	3	291	446	28-5	30-5	0-50	24 77	1,188	38 55	13 78	25
4.....	612	453	3	291	446	30-0	42-5	0-50	28 31	1,863	62 40	34 09	18
5.....	580	406	3	291	446	32-0	37-5	0-50	26 23	1,336	42 55	15 32	31
6.....	580	452	3	291	446	28-0	58-0	0-50	26 92	1,253	38 90	11 98	25
7.....	599	411	3	291	446	37-0	32-0	0-50	26 28	1,297	40 83	14 55	24
8.....	603	329	3	291	446	36-5	36-0	0-5	24 74	1,413	43 92	19 18	21
9.....	649	517	3	291	446	39-5	46-0	0-50	30 86	2,143	69 98	39 12	17
10.....	588	315	3	291	446	30-0	34-0	0-50	23 99	1,398	45 02	21 03	20
11.....	601	441	3	291	446	25-0	38-5	0-50	27 52	1,425	44 31	16 79	23
12.....	475	427	3	291	446	27-0	28-0	0-50	23 91	1,367	42 49	18 58	20
13.....	578	356	3	291	446	30-0	35-0	0-50	24 85	1,429	46 06	21 21	20
14.....	547	309	3	291	446	22-0	31-0	0-50	22 77	1,255	29 01	6 24	29
15.....	599	510	3	291	446	27-0	33-0	0-50	29 05	1,471	45 37	16 32	23
16.....	543	393	3	291	446	20-5	28-0	0-50	24 68	1,123	41 81	17 11	24
17.....	569	275	3	291	446	25-5	31-5	0-50	22 73	1,353	49 95	27 22	20
18.....	588	450	3	291	446	28-5	31-5	0-50	27 32	1,339	45 44	18 12	24
19.....	572	353	3	291	446	18-5	30-5	0-50	24 42	1,165	39 68	15 26	25
20.....	589	387	3	291	446	29-0	35-0	0-50	25 71	1,486	49 34	23 63	20
Total.....	11,672	7,803	60	5,820	8,920	585-0	709-0	10-0	515 37	27,886	903 11	386 72	
Average.....	583-6	390-1	3	291	446	29-2	35-4	0-5	25 76	1,394	45 15	19 33	23

## QUEBEC EGG LAYING CONTEST.

## LIST OF ENTRANTS.

With individual and total production 1921-22.

Pen	Owner and Address	Variety	Bird No.										Floor	Total
			1	2	3	4	5	6	7	8	9	10		
1	M. T. Armitage, Sherbrooke.....	B.P.R..	100	*105	99	98	94	55	102	75	108	151	.....	987
2	Basse-Cour de la Co-operative Centrale, Princeville	B.P.R..	65	66	120	27	126	D 81	D 99	117	112	105	.....	918
3	Arthur Fournier, Montmagny.....	B.P.R..	102	103	143	145	70	96	183	124	111	118	.....	1,196
4	Laforest & Co., Amos.....	B.P.R..	D101	D 27	48	91	116	D 99	D 37	D 50	175	128	.....	872
5	Mlle Amelia Lecomte, Princeville.....	B.P.R..	92	85	139	82	125	116	123	122	102	62	4	1,050
6	Ros. Legaré, Princeville.....	B.P.R..	D 35	* 75	58	84	* 76	65	D 36	53	122	* 95	1	700
7	Sta. Expérimentale, Cap Rouge.....	B.P.R..	D 6	91	143	* 81	65	132	D	D 3	138	100	7	766
8	Sta. Expérimentale, Cap Rouge.....	B.P.R..	152	129	170	134	36	* 3	58	112	176	132	8	1,110
9	Sta. Expérimentale, Cap Rouge.....	B.P.R..	*123	118	125	153	* 82	147	D 65	41	* 32	129	1	1,016
10	Basse-Cour de la Co-operative Centrale, Princeville	R.I.R..	173	78	D 88	96	D 2	76	114	84	115	111	2	939
11	La. J. Bois, St. Jean Port Joli.....	R.I.R..	* 52	78	154	110	131	125	136	97	113	100	4	1,100
12	Geo. Bouchard, Ste. Anne de la Pocatière.....	S.C.	108	53	96	71	103	114	114	51	111	113	4	938
13	J. W. Butler, Montreal.....	S.C.	128	* 59	69	D121	39	D100	115	116	104	95	1	947
14	D. D. Dowding, Howick.....	R.I.R..	.....	153	217	102	76	162	98	162	157	110	15	1,252
15	Ecole d'Agriculture, Ste. Anne de la Pocatière.....	R.I.R..	162	109	104	78	59	124	134	137	137	150	1	1,195
16	Rosaire Legare, Princeville	R.I.R..	121	D 71	139	109	124	110	75	55	D 11	83	2	870
17	Mrs. S. G. MacDermot, Montreal.....	R.C.	132	*182	119	100	* 93	136	147	102	158	154	6	1,329
18	J. W. Mercier, L'Islet.....	R.I.R..	110	153	148	150	103	176	D	124	150	122	6	1,242
19	A. Ouellette, N. R. Pierreville.....	R.I.R..	191	115	106	* 62	111	97	135	94	83	158	5	1,157
20	Frank Perkins, Foster.....	R.I.R..	55	109	84	53	124	104	53	100	87	89	5	863
Total.....														20,447

\* Production of more than one bird.  
D Dead but not substituted.

## QUEBEC EGG LAYING CONTEST, CAP ROUGE.

## TABLE SHOWING PRODUCTION COSTS

Feed with cost, eggs and value, gain and cost per dozen in 1921-22.

Pen Number	Scratch grain	Meal mixture	Beef scrap	Green feed	Milk	Char-coal	Shell	Total cost	Eggs laid	Value	Gain	Cost per dozen
	lbs.	lbs.	lbs.	lbs.	lbs.	lbs.	lbs.	\$ c.		\$ c.	\$ c.	cts.
1.....	773	155-0	33-75	65	147	6-25	35-25	23 77	987	33 42	9 65	28
2.....	722	133-50	32-75	65	147	6-25	38-75	22 64	918	29 50	6 86	29
3.....	769	160-5	36-5	65	147	5-25	39-50	23 97	1,196	38 13	14 16	23
4.....	689	140-25	30-75	65	147	6-25	30-75	21 36	872	32 39	11 03	29
5.....	807	136-25	30-25	59	147	5-50	36-0	23 85	1,050	32 83	8 98	27
6.....	704	131-0	29-75	46	147	5-75	28-50	21 39	700	22 45	1 06	36
7.....	665	124-0	28-0	51	147	6-00	27-75	20 44	766	24 66	4 22	32
8.....	698	143-5	30-25	51	147	6-50	31-50	21 61	1,110	39 38	17 77	23
9.....	698	130-25	33-5	59	147	6-00	29-0	21 31	1,016	36 04	14 73	25
10.....	698	140-0	29-25	65	147	5-25	29-75	21 31	939	36 58	15 27	27
11.....	700	146-0	35-25	65	147	6-00	37-75	21 98	1,100	38 62	16 64	23
12.....	728	151-0	29-25	65	147	6-00	33-00	22 22	938	28 40	6 18	28
13.....	763	150-25	33-0	65	147	6-00	33-25	23 36	947	33 88	10 52	29
14.....	779	166-5	34-75	65	147	6-00	37-0	24 25	1,252	44 15	19 90	23
15.....	751	144-5	30-75	65	147	6-00	36-25	23 08	1,195	44 69	21 61	23
16.....	682	148-25	27-75	65	147	6-00	34-0	21 42	870	29 45	8 03	29
17.....	745	165-5	35-0	65	147	6-00	39-0	23 34	1,329	48 60	25 26	21
18.....	678	160-5	33-25	65	147	6-00	38-75	21 87	1,242	40 93	19 06	21
19.....	716	154-25	33-75	65	147	6-00	34-0	22 49	1,157	39 17	16 68	23
20.....	711	149-5	31-75	65	147	6-00	32-75	22 07	863	27 08	5 01	30
Total.....	14,476	2,930-5	639-25	1,241	2,940	119-0	682-50	447 73	20,447	700 35	252 62	
Average....	723-8	146-5	31-9	62-0	147	5-9	34-12	22 38	1,022	35 01	12 63	26



## ONTARIO EGG LAYING CONTEST.

## LIST OF ENTRANTS.

With individual and total production 1921-22.

Pen	Owner and Address	Variety	Bird No.										Floor	Total
			1	2	3	4	5	6	7	8	9	10		
1	J. R. Stork, St. Catharines.....	B.R.....	172	*175	193	*174	*254	167	D172	200	179	218	14	1,918
2	Neff Bros., Simcoe.....	B.R.....	207	*190	*219	*234	159	115	211	138	210	96	14	1,793
3	F. C. Stille, Ottawa.....	B.R.....	170	212	244	164	180	216	247	202	D167	197	6	2,005
4	J. W. Clark, Cainsville.....	B.R.....	165	234	265	171	*225	251	184	*171	229	107	23	2,025
5	Nor. Spec. Farm, St. Williams.....	B.R.....	*157	*144	220	189	*177	214	241	180	D116	203	.....	1,850
6	Ontario Agri. College, Guelph.....	B.R.....	D195	200	183	167	*221	*162	181	248	107	* 93	13	1,770
7	W. W. Marshall, Merlin.....	B.R.....	104	174	*159	155	161	205	156	44	129	158	.....	1,458
8	A. R. Miller, Eganville.....	S.C.A.....	154	*119	152	149	D 95	132	D 99	154	144	188	.....	1,408
9	L. W. Armstrong, Minesing.....	S.C.A.....	47	190	152	164	191	202	159	140	177	199	8	1,629
10	G. & W. Ratz, Tavistock.....	S.C.A.....	151	66	163	128	*151	* 92	*171	1	150	128	7	1,208
11	N. H. Gampp, New Hamburg.....	S.C.A.....	128	176	221	162	131	182	181	143	190	198	.....	1,744
12	J. Hoffman, New Hamburg.....	S.C.A.....	204	75	167	85	185	199	162	200	90	150	20	1,537
13	H. Montgomery, Avonmore.....	R.C.B.L.....	169	*145	191	120	*146	154	153	146	55	90	7	1,376
14	H. G. Hebel, Bridgeport.....	S.C.W.L.....	*202	194	200	236	205	205	271	93	240	288	.....	2,138
15	G. W. Peal, Rockwood.....	S.C.W.L.....	131	255	203	238	*141	186	*181	206	D132	148	13	1,834
16	Nor. Spec. Farm, St. Williams.....	S.C.W.L.....	*161	226	197	181	224	249	206	155	165	248	.....	2,025
17	C. A. Webster, Cainsville.....	S.C.W.L.....	146	233	216	163	191	215	241	207	157	193	.....	1,970
18	Exp. Farm, Ottawa.....	S.C.W.L.....	170	136	239	238	240	140	144	205	*106	171	23	1,812
19	W. J. Richardson, Caledonia.....	S.C.W.L.....	200	*186	170	162	*192	130	146	200	180	*118	6	1,690
20	A. McLean, Gananoque.....	S.C.W.L.....	200	216	159	261	218	201	194	*148	218	207	20	2,042
21	Dr. I. H. Ante, Richmond Hill.....	S.C.W.L.....	200	181	163	145	105	204	166	118	3	*173	17	1,475
22	Ottawa East P. Yards, Ottawa.....	S.C.W.L.....	151	D104	190	195	* 89	160	*142	128	99	185	12	1,455
23	G. F. Selleck, Billings Bridge.....	S.C.W.L.....	195	136	152	94	164	118	194	114	2	126	21	1,316
24	C. H. Miller, Eganville.....	S.C.W.L.....	224	259	160	223	172	226	226	227	225	187	14	2,144
25	Credit Vale Farm, Streetsville.....	S.C.W.L.....	*151	199	*164	153	197	218	211	158	147	147	5	1,750
26	G. S. Dundas, Markdale.....	S.C.W.L.....	181	139	131	126	191	249	143	217	105	178	5	1,665
27	Exp. Farm, Ottawa.....	S.C.W.L.....	186	*160	133	108	202	176	164	173	138	168	.....	1,628
28	Exp. Farm, Ottawa.....	B.R.....	218	202	167	217	160	97	223	183	209	240	.....	1,925
	Total.....													48,590

\* Production of more than one bird.

D Dead but not substituted.

## ONTARIO EGG LAYING CONTEST, OTTAWA.

TABLE SHOWING PRODUCTION COSTS.

Feed with cost, eggs and value, gain and cost per dozen in 1921-22.

Pen number	Scratch grain	Meal mixture	Meat feed	Green feed	Milk	Grit	Shell	Total cost	Eggs laid	Value	Gain	Cost per dozen
	lbs.	lbs.	lbs.	lbs.	lbs.	lbs.	lbs.	\$ c.		\$ c.	\$ c.	c.
1	588	193-75	42-0	255	650	40-25	55-5	22 61	1,918	80 09	57 48	15-1
2	570	243-25	38-0	255	650	30-50	35-5	18 83	1,793	77 15	58 32	12-6
3	596	215-50	42-0	255	650	48-50	52-00	25 57	2,005	78 74	53 17	15-2
4	580	274-75	42-0	255	650	40-00	36-5	26 36	2,025	84 46	58 10	15-6
5	586	150-0	40-0	255	650	18-0	36-75	23 36	1,850	76 45	53 09	15-1
6	559	237-75	42-0	255	650	31-0	31-0	24 95	1,770	72 08	47 13	16-8
7	570	176-50	33-0	255	650	37-0	32-5	23 31	1,458	55 66	32 35	19-2
8	454	169-25	31-0	255	650	19-25	30-5	21 45	1,408	53 32	31 87	18-2
9	493	153-25	37-0	255	650	39-0	32-5	21 42	1,629	64 62	43 20	15-7
10	434	145-25	25-75	255	650	26-50	27-5	19 17	1,208	46 97	27 80	18-9
11	490	189-0	26-0	255	650	21-0	36-50	21 33	1,744	74 25	52 92	14-4
12	474	187-75	35-50	255	650	24-0	33-5	21 60	1,587	59 94	38 34	16-8
13	461	184-0	15-0	255	650	22-50	41-5	21 22	1,876	51 86	30 64	18-4
14	514	244-75	18-5	255	650	14-5	40-50	22 75	2,138	91 29	68 54	12-7
15	508	243-0	30-0	255	650	15-0	36-25	24 71	1,834	75 19	50 48	16-0
16	495	237-25	21-0	255	650	14-0	34-50	22 25	2,025	78 75	56 50	13-0
17	517	212-25	16-0	255	650	17-75	38-5	21 91	1,970	77 15	55 24	13-3
18	486	197-75	39-0	255	650	19-5	41-75	22 33	1,812	71 23	48 90	14-7
19	518	248-75	36-0	255	650	31-0	48-5	25 44	1,690	63 05	37 61	18-0
20	519	285-25	16-5	255	650	35-5	52-5	25 66	2,042	80 97	55 31	15-0
21	479	161-25	19-0	255	650	32-75	30-25	21 19	1,475	56 19	35 00	17-2
22	505	204-25	33-0	255	650	26-0	47-5	22 63	1,455	56 15	33 52	18-6
23	466	176-25	20-5	255	650	21-25	26-5	21 24	1,316	48 85	27 61	19-2
24	533	172-75	15-0	255	650	31-5	41-5	21 41	2,144	86 04	64 63	11-8
25	470	188-25	12-0	255	650	16-0	30-75	21 19	1,750	65 84	44 65	14-4
26	521	213-75	23-75	255	650	47-25	46-5	24 09	1,665	63 01	38 92	17-0
27	473	193-5	39-0	255	650	52-25	36-5	22 11	1,628	65 28	43 17	16-2
28	604	237-25	42-0	255	650	60-5	39-0	26 21	1,925	73 14	46 93	16-3
Total	14,463	5,736-25	830-50	7,140	18,200	832-25	1,072-75	636 30	48,590	1,927 72	1,291 42	.....
Average	516-5	204-7	29-6	255	650	29-7	38-3	22 71	1,735	68 83	46 12	16-0

## MANITOBA EGG LAYING CONTEST.

LIST OF ENTRANTS.

With individual and total production 1921-22.

Pen	Owner and Address	Variety	Bird No.										Floor	Total
			1	2	3	4	5	6	7	8	9	10		
1	Kerr & McGuinness, Brandon	L.B.	47	76	96	101	99	25	D	48	63	15	35	605
2	F. E. Merritt, Melita	B.R.	157	106	224	*181	128	43	D113	195	46	138	8	1,339
3	Wm. Lief, Hamiota	R.I.R.	137	D 44	105	84	130	149	169	D 78	162	D125	11	1,194
5	E. H. Hebel, Brandon	S.C.A.	203	186	165	*196	174	201	202	209	207	199	18	1,960
6	Wm. Gregg, Desford	S.C.A.	241	192	182	170	141	157	192	*151	150	160	22	1,758
7	W. H. Howe, Winnipeg	S.C.A.	171	193	91	*165	88	131	107	163	118	184	9	1,420
8	W. H. Howe, Winnipeg	S.C.A.	193	182	131	161	* 85	175	205	144	142	101	15	1,534
9	H. C. Hall, Brandon	W.L.	183	180	140	184	178	163	154	122	161	193	10	1,668
10	Jos. McQuoid, Winnipeg	W.L.	127	150	197	185	D163	87	189	155	198	141	13	1,605
11	Mrs. M. E. White, Brandon	W.L.	*184	148	115	90	206	141	161	158	183	*190	10	1,586
12	F. W. Allen, Winnipeg	W.L.	134	152	143	170	167	138	145	155	169	166	33	1,572
13	H. E. Ross, St. Vital	W.R.	99	161	137	D 10	156	144	D 46	D 39	151	D 57	3	1,003
14	W. J. Cann, Chater	W.W.	110	101	86	144	83	110	D	D 32	126	140	11	943
15	Rev. E. Lund, Lauder	W.W.	154	148	153	171	156	211	154	132	153	132	11	1,575
16	Wm. Gregg, Desford	W.W.	140	181	157	191	188	55	129	99	132	144	19	1,435
17	Exp. Farm, Brandon	W.W.	184	163	184	172	89	197	135	228	42	82	23	1,499
18	Exp. Farm, Brandon	W.W.	201	125	224	178	140	167	236	164	206	152	29	1,822
19	Exp. Farm, Brandon	B.R.	252	192	162	237	113	177	132	171	228	136	13	1,813
20	Exp. Farm, Brandon	B.R.	191	142	267	187	222	122	202	197	179	209	9	1,927
Total														28,211

\*—Production of more than one bird.  
D—Dead but not substituted.

## MANITOBA EGG LAYING CONTEST, BRANDON.

TABLE SHOWING PRODUCTION COSTS.

Feed with cost, eggs and value, gain and cost per dozen in 1921-22.

Pen number	Scratch grain	Meal mixture	Beef scrap	Green feed	Milk	Grit	Shell	Total cost	Eggs laid	Value	Loss	Gain	Cost per dozen
	lbs.	lbs.	lbs.	lbs.	lbs.	lbs.	lbs.	\$ c.		\$ c.	\$ c.	\$ c.	c.
1.....	662	337.5	15.38	77	715.0	36.0	31.0	22 79	605	14 43	8 36	.....	45
2.....	574	302.5	11.38	77	768.5	54.0	53.0	21 62	1,339	40 80	.....	19 18	19
3.....	555	370.0	11.38	77	700.0	24.0	45.0	21 12	1,194	32 80	.....	11 68	21
5.....	529	208.5	11.38	77	595.75	15.0	45.0	17 36	1,960	60 61	.....	43 25	10
6.....	529	168.5	11.38	77	607.0	15.5	37.5	17 01	1,758	51 69	.....	34 68	11
7.....	529	220.5	12.30	77	583.5	33.0	50.0	17 76	1,420	43 19	.....	25 43	17
8.....	486	199.5	12.38	77	579.0	17.0	54.0	16 63	1,534	48 75	.....	32 12	13
9.....	499	272.5	12.38	77	583.5	18.0	45.0	17 97	1,668	48 19	.....	30 22	12
10.....	512	320.5	13.38	77	637.5	25.0	58.0	19 39	1,605	51 86	.....	32 47	14
11.....	532	342.5	13.38	77	630.0	22.0	59.0	20 58	1,586	46 99	.....	26 41	15
12.....	552	342.5	14.30	77	619.5	25.0	47.0	20 25	1,572	42 16	.....	21 91	15
13.....	511	331.5	11.38	77	564.5	22.0	38.0	19 01	1,003	26 26	.....	7 25	22
14.....	492	191.5	11.38	77	559.5	34.0	37.0	16 68	943	28 70	.....	12 02	21
15.....	580	204.5	14.38	77	656.0	23.0	37.0	19 48	1,575	49 71	.....	30 23	15
16.....	565	212.5	13.38	77	655.5	23.0	33.0	18 26	1,435	41 63	.....	23 37	15
17.....	554	315.5	11.38	77	696.0	26.0	48.0	20 40	1,499	48 06	.....	27 66	16
18.....	639	341.5	16.30	77	692.5	25.0	51.0	22 51	1,822	58 65	.....	36 14	14
19.....	635	303.5	16.38	77	659.0	37.0	45.0	21 84	1,813	57 72	.....	35 88	14
20.....	635	400.0	16.30	77	721.0	36.25	49.0	22 10	1,927	60 53	.....	38 43	13
Total....	10,570	5,385.5	249.9	1,463	12,223.25	510.75	862.5	372 76	28,211	852 73	8 36	488 33	.....
Average.....	556.3	283.4	13.1	77.0	638.0	26 82	45.3	19 61	1,484	44 88	.....	24 41	16

## SASKATCHEWAN EGG LAYING CONTEST.

## LIST OF ENTRANTS.

With individual and total production 1921-22.

Pen	Owner and Address	Variety	Bird No.										Floor	Total
			1	2	3	4	5	6	7	8	9	10		
1	J. G. Lewthwaite, Ros- thern.....	W.W....	*157	143	192	180	150	162	130	122	130	124	41	1,531
2	Exp. Farm, Indian Head...	W.W....	139	185	151	207	*136	190	175	197	174	182	35	1,771
3	Exp. Farm, Indian Head...	W.W....	*204	160	184	218	190	126	162	138	154	99	89	1,724
4	Exp. Farm, Indian Head...	W.W....	155	120	184	* 52	* 58	198	188	98	147	199	28	1,427
5	Exp. Farm, Indian Head...	W.W....	*154	173	151	165	187	92	*145	115	213	* 73	26	1,494
6	A. Finch, Battleford.....	W.W....	214	* 72	*136	* 27	216	211	109	167	181	179	30	1,542
7	W. W. Smith, Battleford...	B.R....	99	154	179	175	187	135	105	* 42	177	190	14	1,457
8	S. W. Exley, Conquest....	W.O....	45	106	*107	115	126	133	110	158	150	152	62	1,264
9	O. A. Walters, Grenfell...	S.C....												
		R.I.R....	171	25	15	147	116	135	180	49	*103	114	19	1,074
10	T. Gibbs, Moose Jaw.....	S.C....												
		W.L....	149	106	75	114	133	60	86	121	D 64	79	27	1,014
11	T. Gibbs, Moose Jaw.....	S.C....												
		B.L....	99	99	141	97	132	70	130	110	111	79	49	1,117
12	A. W. Vann, Indian Head...	W.W....	180	119	153	226	194	179	214	56	143	177	39	1,680
13	Mrs. J. J. Dane, Heward...	S.C....												
		R.I.R....	170	180	140	137	186	132	*133	170	174	*155	51	1,628
14	R. Morley, Moose Jaw....	S.C.A....	151	125	124	* 80	105	135	104	67	D 16	102	37	1,046
15	S. H. Jones, Blaine Lake..	B.R....	182	198	175	208	75	183	155	121	201	144	32	1,674
16	Major M. Shoul, Zelma...	B.R....	157	104	175	D 17	174	95	201	37	120	171	37	1,288
17	E. Barnett, Radisson.....	W.W....	119	145	57	159	91	110	150	58	143	121	39	1,197
18	Mrs. Alfred Wilson, Lash- burn.....	B.R....	184	115	184	117	114	141	94	D 81	87	D 1	15	1,133
Total.....														25,062

\*—Production of more than one bird.

D—Dead but not substituted.



## SASKATCHEWAN EGG LAYING CONTEST, INDIAN HEAD.

TABLE SHOWING PRODUCTION COSTS.

Feed with cost, eggs and value, gain and cost per dozen in 1921-22.

Pen number	Scratch grain	Meal mixture	Grit	Shell	Char-coal	Total cost	Eggs laid	Value	Gain	Cost per dozen
	lbs.	lbs.	lbs.	lbs.	lbs.	\$ c.		\$ c.	\$ c.	c.
1.....	776	440.5	11.5	24.5	19.5	20 22	1,531	45 09	24 87	15
2.....	806	398.5	15.0	24.0	21.0	19 91	1,771	54 09	34 18	13
3.....	762	417.0	13.0	20.5	15.0	19 37	1,724	52 24	32 87	13
4.....	749	417.0	11.0	13.5	10.0	18 96	1,427	43 41	24 45	15
5.....	690	390.0	8.5	15.5	18.0	18 27	1,494	44 94	26 67	14
6.....	705	392.0	13.5	15.0	5.0	18 80	1,542	46 21	27 41	14
7.....	707	372.0	17.0	12.5	5.5	17 15	1,457	38 80	21 65	14
8.....	789	335.0	12.5	19.5	7.0	17 68	1,264	35 89	18 21	16
9.....	781	335.0	8.5	15.0	4.5	16 97	1,074	26 95	9 98	18
10.....	689	369.0	12.0	17.5	4.0	16 95	1,014	23 79	6 84	20
11.....	684	410.0	7.5	18.0	6.0	17 50	1,117	26 80	9 30	18
12.....	807	317.0	12.0	19.5	11.0	17 56	1,680	47 76	30 20	12
13.....	803	370.0	17.0	22.5	3.5	18 57	1,628	43 20	24 63	13
14.....	642	360.0	13.0	17.5	6.0	16 38	1,046	25 58	9 20	18
15.....	755	317.0	12.0	20.5	4.5	16 80	1,674	43 47	26 67	12
16.....	727	370.0	11.5	22.5	21.5	17 51	1,288	34 67	17 16	17
17.....	729	302.0	9.0	17.5	14.0	16 65	1,197	32 80	16 15	16
18.....	793	350.0	15.0	17.0	8.0	17 65	1,133	28 40	10 75	18
Total.....	13,394	6,662.0	219.5	332.5	184.0	322 90	25,062	694 09	371 19	.....
Average.....	744.1	370.1	12.1	18.4	10.2	17 93	1,392	38 55	20 62	16

## ALBERTA EGG LAYING CONTEST.

LIST OF ENTRANTS.

With individual and total production 1921-22.

Pen	Owner and Address	Variety	Bird No.										Floor	Total
			1	2	3	4	5	6	7	8	9	10		
1	F. Edwards, Edmonton...	B.R....	165	127	183	75	173	120	204	156	158	162	6	1,529
2	W. A. Fraser, Medicine Hat	B.R....	187	*114	187	213	229	167	142	126	176	249	1	1,801
3	B. E. Rogers, Lethbridge...	B.R....	163	208	251	230	114	150	203	189	159	147	4	1,818
4	Wm. Northcott, Bedding- ton.....	B.R....	151	53	112	*108	58	150	80	106	132	* 89	2	1,042
5	M. Bolinger, Gleichen.....	B.R....	71	154	82	103	163	90	97	101	77	93	8	1,039
6	H. Higginbotham, Calgary	B.R....	71	190	124	77	*138	104	152	215	59	122	1	1,252
7	Westbrookes Bros., Leth- bridge.....	B.R....	186	80	134	69	D 53	181	101	166	156	102	.....	1,228
8	Miss H. J. Garrow, Brooks	B.R....	101	113	91	*147	111	117	42	155	* 76	67	5	1,025
9	Dept. of Agriculture, Ed- monton.....	W.W....	*147	121	*183	221	128	165	147	163	171	164	5	1,615
11	Exp. Farm, Lacombe.....	W.W....	24	D 48	159	147	156	188	138	123	163	144	6	1,296
12	C. M. Baker, Calgary.....	W.W....	122	165	156	192	113	191	73	144	35	200	3	1,394
13	H. T. Luther, Winnifred...	W.W....	* 98	167	*234	141	152	203	156	100	77	85	6	1,419
14	J. F. Canning, McLeod...	W.W....	215	122	159	210	D 23	D 73	124	* 42	D152	179	8	1,307
18	R.I.R. Club, Calgary.....	R.I.R..	D156	D 83	95	144	110	*110	179	*131	165	*111	5	1,289
19	C.P.R. Demon. Farm, Strathmore.....	R.I.R..	151	130	68	94	112	96	80	148	138	179	5	1,201
20	Exp. Farm, Lethbridge...	B.R....	180	151	100	184	167	219	199	110	195	178	5	1,688
21	T. H. Enderton, Leth- bridge.....	Anc....	56	152	135	134	178	177	85	185	78	127	1	1,308
22	H. C. Graham, Lethbridge	Anc....	142	120	166	170	169	179	118	140	133	170	.....	1,507
23	R. H. Ennismore, Edmon- ton.....	W.L....	235	186	167	146	210	261	211	257	*145	204	5	2,027
24	A. J. Forner, Medicine Hat	W.L....	143	136	16	152	75	112	71	132	68	47	.....	957
25	Exp. Farm, Lethbridge...	B.R....	*169	198	216	281	196	295	233	226	154	203	9	2,180
26	Exp. Farm, Lethbridge...	B.R....	217	201	88	165	177	202	129	159	*128	235	6	1,707
27	Exp. Farm, Lethbridge...	B.R....	114	202	149	237	256	225	140	152	212	228	6	1,922
28	Exp. Farm, Lethbridge...	B.R....	189	170	215	*110	225	228	*223	239	124	97	6	1,826
29	Exp. Farm, Lethbridge...	B.R....	227	178	186	203	95	152	229	173	168	210	6	1,827
Total.....														37,204

\* Production of more than one bird.  
D Dead but not substituted.

## ALBERTA EGG LAYING CONTEST, LETHBRIDGE.

TABLE SHOWING PRODUCTION COSTS.

Feed with cost, eggs and value, gain and cost per dozen in 1921-22.

Pen Number	Scratch grain	Meal mixture	Beef scrap	Green feed	Milk	Grit	Shell	Char-coal	Total cost	Eggs laid	Value	Gain	Cost per dozen
	lbs.	lbs.	lbs.	lbs.	lbs.	lbs.	lbs.	lbs.	\$ c.		\$ c.	\$ c.	cts.
1.....	426.0	539.5	62.75	73	5	9.50	24.50	2.75	19 77	1,529	53 07	33 30	15
2.....	436.0	604.5	63.0	73	5	11.25	22.75	4.25	21 57	1,801	69 55	47 98	14
3.....	432.0	558.0	59.5	73	5	14.25	23.0	8.0	20 43	1,818	61 43	41 00	13
4.....	416.5	553.0	64.0	73	5	15.25	17.75	11.50	20 81	1,041	37 59	16 78	23
5.....	423.5	587.5	59.50	73	5	15.50	21.0	7.25	20 91	1,039	31 17	10 26	24
6.....	429.0	565.0	61.25	73	5	6.25	21.75	6.25	20 75	1,252	41 06	20 31	19
7.....	426.0	571.5	69.0	73	5	12.75	22.0	6.50	21 27	1,228	43 37	22 10	20
8.....	423.5	585.0	60.25	73	5	16.50	22.0	6.0	21 10	1,025	32 95	11 85	24
9.....	428.0	566.5	55.25	73	5	5.0	20.0	1.25	19 99	1,615	61 84	41 85	14
11.....	416.0	557.75	56.25	73	5	7.0	15.0	1.50	20 21	1,296	48 24	28 03	13
12.....	421.0	479.0	64.75	73	5	13.75	26.75	9.25	19 66	1,394	48 27	28 61	16
13.....	405.0	525.0	58.5	73	5	15.25	22.0	7.50	19 74	1,419	54 84	35 10	16
14.....	390.0	538.0	62.0	73	5	3.75	23.25	1.0	19 47	1,307	49 27	29 80	17
18.....	392.0	555.0	60.50	73	5	6.0	19.75	8.0	19 87	1,289	41 46	21 59	19
19.....	408.0	586.5	66.75	73	5	7.0	19.50	3.50	21 30	1,201	44 69	23 39	21
20.....	405.5	558.5	61.25	73	5	10.50	19.50	3.50	19 94	1,688	61 66	41 72	14
21.....	337.5	413.0	62.75	73	5	4.75	17.25	1.50	16 38	1,308	42 01	25 63	15
22.....	336.0	422.5	57.25	73	5	4.0	22.0	7.0	16 48	1,507	52 38	35 90	13
23.....	391.0	515.0	68.75	73	5	4.25	27.25	5.50	19 65	2,027	74 06	54 41	11
24.....	300.0	428.5	53.75	73	5	3.25	12.25	4.75	15 31	957	27 08	13 77	19
25.....	411.0	513.5	66.25	73	5	6.0	14.75	7.50	19 41	2,180	82 25	62 84	10
26.....	411.0	513.5	64.25	73	5	6.25	15.0	6.75	19 41	1,707	65 68	46 27	13
27.....	411.0	513.5	64.25	73	5	6.5	15.0	6.75	19 41	1,922	72 69	53 28	12
28.....	411.0	513.5	64.25	73	5	6.5	15.0	6.75	19 41	1,826	68 41	49 00	12
29.....	411.0	485.0	64.25	73	5	6.5	15.0	6.75	19 41	1,827	67 34	47 93	12
Total.....	10,097.5	13,248.25	1,550.25	1,825	125	217.50	494.0	141.25	491 66	37,204	1,332 36	842 70	
Average...	403.9	529.9	62.0	73	5	8.7	19.7	5.6	19 66	1,488	53 29	33 70	16

## BRITISH COLUMBIA EGG LAYING CONTEST.

## LIST OF ENTRANTS.

With individual and total production 1921-22.

Pen	Owner and Address	Variety	Bird No.										Floor	Total
			1	2	3	4	5	6	7	8	9	10		
1	Dom. Exp. Farm, Agassiz.	W.L....	206	219	219	188	211	236	265	253	216	218	22	2,253
2	H. W. Bratt, Crofton.....	W.L....	D 45	106	194	190	63	166	148	168	179	216	6	1,481
3	W. D. Bruce, Pitt Meadows	W.L....	165	D134	119	D 79	252	D101	229	270	D108	191	30	1,678
4	P. Darbey & Son, Hammond.....	W.L....	D 61	183	73	106	D112	211	206	82	D 63	180	24	1,301
5	R. H. Grahame, Langley Prairie.....	W.L....	226	196	179	239	193	224	162	172	203	250	24	2,068
6	R. S. A. Jackson, Duncan.	W.L....	*179	191	175	162	238	*186	199	203	212	204	51	2,000
7	C. P. Metcalfe, Hammond.	W.L....	214	188	113	202	227	238	154	200	196	227	15	1,974
8	M. H. Rutledge, Sardis....	W.L....	*244	*219	195	222	219	*217	66	232	196	202	38	2,050
9	E. Yale Smith, Chilliwack.	W.L....	235	189	143	220	*229	*188	181	209	155	220	55	2,024
10	Surrey W. L. Farm, Vancouver.....	W.L....	225	206	238	203	255	228	232	171	204	237	30	2,229
11	A. Unsworth, Sardis.....	W.L....	155	229	118	209	175	158	75	164	188	73	49	1,593
12	Mrs. S. Raby, Sardis.....	Bl.L....	107	89	*121	189	131	83	146	12	96	155	67	1,196
13	George Nurse, Agassiz....	Anc....	138	*149	223	*227	86	128	179	190	*208	174	22	1,724
14	T. H. Braim, Sardis.....	B.A....	129	157	188	185	138	189	163	157	211	193	15	1,815
15	Sturgeon & Wells, Yennadon.....	B.A....	139	171	186	151	221	147	131	213	191	153	36	1,739
16	H. Sweetman, Agassiz....	R.I.R....	195	196	214	231	*145	248	142	173	174	196	52	1,966
17	D. Russell, Jubilee.....	R.I.R....	213	*129	158	127	195	173	167	131	131	210	34	1,668
18	R. Johnstone, Kelowna....	B.O....	151	180	176	217	143	238	101	92	213	212	56	1,779
19	C. W. Robbins, Chilliwack	B.O....	112	203	222	145	156	202	168	181	142	56	51	1,638
20	Dom. Exp. Farm, Agassiz.	B.P.R....	297	183	266	284	230	244	253	276	253	272	33	2,601
21	M. S. Stephens, Courtenay.	B.P.R....	213	165	*203	113	209	*140	267	165	177	149	49	1,850
22	H. Wilkinson, S. Vancouver	B.P.R....	156	155	161	138	146	150	172	117	109	D134	22	1,460
23	Glen Bros., Armstrong....	W.P.R....	172	192	113	149	155	113	163	156	165	163	10	1,551
24	W. Bradley, Langford.....	W.W....	136	181	241	*160	203	158	165	183	186	130	42	1,785
25	A. Cant, Appledale.....	W.W....	146	148	194	215	D	229	243	59	179	168	29	1,610
26	H. C. Cooke, Victoria....	W.W....	231	199	198	153	188	186	180	180	195	163	36	1,909
27	A. S. Huntingford, Agassiz.	W.W....	237	175	35	225	D112	172	D 8	D 157	234	124	11	1,490
28	Reade & King, Cowichan Station.....	W.W....	180	180	177	190	159	202	235	307	203	157	24	2,014
29	Dom. Exp. Farm, Summerland.....	W.W....	247	217	225	*232	205	*140	156	206	185	216	78	2,107
Total.....														52,553

\* Production of more than one bird.  
D Dead but not substituted.

## BRITISH COLUMBIA EGG LAYING CONTEST, AGASSIZ.

TABLE SHOWING PRODUCTION COSTS.

Feed with cost, eggs and value, gain and cost per dozen in 1921-22.

Pen Number	Scratch grain	Meal mixture	Green feed	Milk	Grit	Shell	Total cost	Eggs laid	Value	Gain	Cost per dozen
	lbs.	lbs.	lbs.	lbs.	lbs.	lbs.	\$ c.		\$ c.	\$ c.	cts.
1.....	410-75	317-0	577	546	4-25	46-0	23 02	2,253	64 36	41 34	12
2.....	409-75	217-65	577	546	7-25	30-5	20 26	1,481	38 27	18 28	16
3.....	374-75	190-0	577	546	4-5	26-25	18 31	1,678	48 53	30 22	13
4.....	454-5	119-25	577	546	4-25	23-75	18 87	1,301	36 08	17 21	17
5.....	496-5	187-75	577	546	10-5	39-25	21 32	2,068	55 63	34 31	12
6.....	398-75	334-75	577	546	5-5	34-0	22 95	2,000	55 21	32 26	13
7.....	426-0	402-75	577	546	4-0	38-25	25 27	1,974	51 61	26 34	15
8.....	453-5	380-25	577	546	3-75	35-5	25 13	2,050	56 60	31 47	15
9.....	473-0	373-75	577	546	2-75	38-0	25 55	2,024	55 34	29 79	15
10.....	409-75	366-5	577	546	5-5	39-5	24 11	2,229	60 80	36 69	12
11.....	418-5	286-5	577	546	5-0	29-25	22 28	1,593	42 01	19 73	16
12.....	380-5	221-75	577	546	9-0	24-75	19 51	1,196	28 56	9 05	19
13.....	392-5	251-65	577	546	3-8	29-5	20 65	1,724	46 29	25 64	14
14.....	511-25	340-25	577	546	6-5	34-5	25 54	1,815	46 06	20 52	16
15.....	487-0	264-5	577	546	2-3	39-95	23 21	1,739	46 64	23 43	16
16.....	408-75	403-0	577	546	8-0	33-25	24 43	1,966	53 29	28 86	15
17.....	453-35	484-65	577	546	8-65	29-5	26 77	1,668	45 54	18 77	19
18.....	436-5	528-05	577	546	4-25	36-75	28 44	1,779	45 72	17 28	19
19.....	435-75	419-0	577	546	9-25	30-0	25 93	1,638	44 78	18 85	19
20.....	432-5	589-5	577	546	6-0	38-35	29 80	2,601	75 57	45 77	13
21.....	433-5	468-0	577	546	5-45	37-85	27 00	1,850	46 63	19 63	17
22.....	458-7	344-85	577	546	7-0	28-0	24 39	1,460	37 71	13 32	20
23.....	408-0	275-3	577	546	8-0	31-0	21 74	1,551	40 53	18 79	17
24.....	443-5	380-25	577	546	6-0	28-5	24 44	1,785	51 24	26 80	16
25.....	445-0	199-75	577	546	5-25	31-3	20 59	1,610	41 38	20 79	15
26.....	438-25	377-5	577	546	8-25	36-25	25 05	1,909	54 66	29 61	15
27.....	426-75	265-55	577	546	3-75	27-75	21 68	1,490	43 05	21 37	17
28.....	410-75	443-05	577	546	8-0	38-5	25 78	2,014	53 94	28 16	15
29.....	429-25	434-0	577	546	15-0	37-5	26 19	2,107	58 95	32 76	15
Total.....	12,557-55	9,866-65	16,733	15,834	181-70	973-45	688 21	52,553	1,424 98	737 04	
Average.....	433-0	340-2	577	546	6-25	33-5	23 73	181-2	49 13	25 41	16

## TABLE SHOWING PRODUCTION COSTS, ALL CONTESTS, 1921-22

Average per pen (10 birds) feed consumed, cost, egg yield and cost of production for 1 year.

Contest	Scratch grain	Meal mixture	Beef scrap	Green food	Milk	Grit	Shell	Charcoal	Total cost	Eggs laid	Value	Gain	Cost per dozen
	lbs.	lbs.	lbs.	lbs.	lbs.	lbs.	lbs.	lbs.	\$ c.		\$ c.	\$ c.	c.
Canadian.....	500-2 5	230-3	33-3	241-0	650-0	29-5	46-69	.....	23 59	1,671	65 72	42 13	17
Prince Edward Island.....	538-5	242-5	.....	138-1	67-3	28-9	32-2	0-7	21 07	1,258	30 82	10 15	20
Nova Scotia.....	609-5	350-4	50-1	147-4	.....	22-8	34-2	.....	27 69	1,383	42 95	14 96	24
New Brunswick.....	583-6	390-1	3-0	201-0	446-0	29-2	35-4	0-5	25 76	1,394	45 15	19 33	23
Quebec.....	723-8	146-5	31-9	62-0	147-0	.....	34-12	5-9	22 38	1,022	35 01	12 63	26
Ontario.....	516-5	204-7	29-6	255-0	650-0	29-7	38-3	.....	22 71	1,735	68 83	46 12	16
Manitoba.....	556-3	283-4	13-1	77-0	638-0	26-82	45-3	.....	19 61	1,484	44 88	24 41	16
Saskatchewan.....	744-1	370-1	.....	.....	.....	12-1	18-4	10-2	17 93	1,392	38 55	20 62	16
Alberta.....	403-9	529-9	62-0	73-0	5-0	8-7	19-7	5-6	19 66	1,488	53 29	33 70	16
British Columbia.....	433-0	340-2	.....	577-0	546-0	6-25	33-5	.....	23 73	1,812	49 13	25 41	16
Total.....	5,609-4	3,088-1	223-0	1,861-5	3,149-3	193-9	337-8	22-9	224 13	14,639	474 33	249 46	.....
Average.....	560-9	308-8	31-0	206-8	39-3	21-5	33-7	4-5	22 41	1,463	47 43	24 94	18



## MORTALITY LIST 1921-21 CONTESTS

	Pens	Deaths	Per cent
Canadian.....	60	94	15.6
Prince Edward Island.....	20	27	13.5
Nova Scotia.....	20	38	19.0
New Brunswick.....	20	25	12.5
Quebec.....	20	34	17.0
Ontario.....	28	44	15.7
Manitoba.....	19	18	9.4
Saskatchewan.....	18	22	12.2
Alberta.....	25	26	10.4
British Columbia.....	29	31	10.7
Totals.....	259	359	13.8

The above table shows the death rate for the contest year. The per cent mortality was 13.8, which was 1.5 higher than that of the previous contest.

Nova Scotia had the highest mortality, which was 19 per cent, Quebec was second highest with 17, Ontario third with 15.7, and the Canadian fourth with 15.6 per cent. Manitoba had the lowest mortality.

Two causes were responsible for most of the deaths during the year and these seemed to be troublesome throughout all contests. They were first, roup, and second, disorders of the reproductive system. These troubles are not associated in any way but appear to be the result of the same or very similar causes.

Most of the deaths in contest birds are the result of heavy feeding and high egg production. Colds, which later develop into roup, canker, etc., are the result of infection, but it is nevertheless true that birds in heavy laying are more prone to infection, because of the heavy strain on the system, than birds in low or ordinary production. It has been noticed that birds in heavy laying are not only more susceptible to disease but, when once affected, are unable to resist the disease and become easy victims, whereas birds in low or ordinary production, even though they contract the disease, are able to put up a greater resistance.

Disorders of the reproductive system, of which prolapsus is the most frequent, are usually caused by some weakness in the productive organs, and because the contest birds receive feed and care which stimulate egg production, birds possessing any weakness in these organs are almost sure to develop disorders of this kind.

Digestive disorders such as enlarged crop, impaction of the gizzard and enlarged or fatty degeneration of the liver were responsible for a number of deaths, but the toll taken by such disorders was comparatively small.

## THREE YEARS' SUMMARY.

During the 1919-20 Contest there were 1,610 birds with an average production of 112.6 eggs each, in 1920-21 the 2,480 birds averaged 134.5 eggs per bird, and in the 1921-22 Contest 2,590 birds had an average yield of 146.3 eggs per bird. The number of birds increased each year and likewise the number of eggs laid per bird was also higher.

The cost of production was 32 cents the first year, 25 cents the second and 18 cents the third year and, no doubt, the increased egg yield was partly responsible for this change. This was especially true of the 1921-22 Contest. During the first contest year the price of grain, mash, etc., was much higher than during the second and third contest years and due allowance must be made for this factor.

The following table gives the averages for each year, the average for the three years for one pen and for one bird per year during the entire three periods.

### AVERAGE OF AVERAGES THREE YEARS LAYING CONTESTS.

Average per pen (10 birds) feed consumed, cost, egg yield, and cost of production for 1 year.

Year	Scratch grain	Meal mixture	Beef scrap	Green feed	Milk	Grit	Shell	Charcoal	Total cost	Eggs laid	Value	Gain	Cost per dozen
	lbs.	lbs.	lbs.	lbs.	lbs.	lbs.	lbs.	lbs.	\$ c.		\$ c.	\$ c.	c.
1919-20.....	552.2	289.3	24.8	124.5	290.7	24.5	31.1	15.1	33 12	1,225	58 48	25 36	32
1920-21.....	557.8	277.3	24.1	278.2	384.7	18.4	27.0	11.3	28 89	1,370	51 70	23 01	25
1921-22.....	560.9	308.8	31.0	206.8	393.6	21.5	33.7	4.5	22 41	1,463	47 43	24 94	18
Total.....	1,670.9	875.4	79.9	609.5	1,069.0	64.4	91.8	30.9	84 42	4,058	157 61	73 31	75
Average per pen.....	556.9	291.8	26.6	203.1	356.3	21.4	30.6	10.3	28 14	1,352	52 53	24 43	25
Average per bird.....	56.6	29.1	2.6	20.3	35.6	2.1	3.0	1.0	2 81	135.2	5 25	2 44	.....

### RECORD OF PERFORMANCE.

Comparing the number of birds qualifying in Record of Performance AA for each year we find as follows: 1919-20—23 per cent; 1920-21—36.4 per cent; 1921-22—40.8 per cent; and for Advanced Record of Performance AA: 1919-20—0.7 per cent; 1920-21—3.4 per cent; and 1921-22—5.9 per cent. While the total number of birds has increased each year the production has increased even more rapidly as is shown by the yearly average production and the per cent qualifying each year.

### INCREASED YEARLY PRODUCTION.

Since the breeding of qualified contest birds could not have had any effect on the second year's birds as they were entering when the 1919-20 Contest birds were leaving the contests, and since production improvement is transmitted very largely through the male, the female progeny of the first contest females are the only ones that could favourably affect production in the third series of contests, and as the number of these pullets was very limited one cannot reasonably expect that the influence created by them was sufficient to account for the increased egg yield. It cannot be denied that the management of the laying contest has improved each year, that the feeding practice has been more carefully studied and administered, that more capable poultrymen have been employed in the carrying out of every detail, but any or all of the above improvements are not, we believe, responsible for the decided improvement which has taken place.

### SELECTION OF CONTEST PENS IMPORTANT.

More careful selection of the contest pens was the major factor in the improvement shown from year to year. Contestants soon learned that there was a difference in the way pullets would perform after entering the contest and that age of bird (or better development of bird) was a very important factor. They soon learned that the proper development was just before the birds started laying, and this one point in selection has been the means of getting breeders to pay greater attention to the hatching of their contest birds. A decided improvement has been noted in this regard, and we believe has exerted as much influence as any other factor.

## THE DEVELOPMENT OF THE PULLET.

The rearing of the well-born chick has very much to do with its physical development, and later on, with the yearly egg yield. Chicks which were intended for contest pens being hatched in the most favourable period of the hatching season start their existence under desirable climatic conditions and as a result develop steadily until ready to enter the contest. Furthermore, these chicks receive the very best of food and shelter so as to give them the best chance possible, and as a result we find a finished article ready to start production when the contest opens the first of November.

It is well known and universally recognized that all pullets are not alike and the breeder that has sufficient stock to enable him to make a careful selection cannot do better than go over them carefully before shipping them to the contest. The careful selection of a well-bred pen of bred-to-lay pullets, which have been hatched at the proper time, have received the proper feed and care throughout the growing season and have been laid down at the contest ready to start laying the first week in November have had more to do with high production than is generally supposed.

## REGISTRATION QUALIFICATIONS.

Perhaps the most recent development in poultry work in Canada is the granting of registration to poultry.

Canada is the first country to provide for registration of poultry in a national way and has done so by standardizing her Egg Laying Contests as to make them the medium through which registration may be obtained. This was made possible on the 16th day of January, 1923, when Dr. J. H. Grisdale, on behalf of the Federal Department of Agriculture, placed his signature to the Constitution of the Canadian National Poultry Record Association. All registration certificates are issued by the Canadian National Live Stock Records Office, Ottawa.

Registration may be obtained as follows:—

1. *Females* of any of the recognized breeds, free from standard disqualifications and typical of the breed they represent, providing they lay 200 eggs, which weigh at least 24 ounces to the dozen, in any of the Canadian National Egg Laying Contests as approved by the Federal Department of Agriculture.

2. *Males* the sons of registered females which are free from standard disqualifications, typical of the breed, and have passed inspection between the age of six and twelve months, providing their dams and grand-dams have qualified in any of the Canadian National Egg Laying Contests, and their owners have fulfilled the necessary requirements as laid down by the Constitution of the Canadian National Poultry Record Association. Or,

3. *Males* that are the sons of registered males and registered females (except first generation registered females) and have passed inspection as to constitution, Standard requirements, breed qualifications, and the other requirements fulfilled as laid down by the said constitution.

It will be noticed that females cannot be registered on their ancestry, but on the production basis, and then only when they and their owners have fulfilled the requirements as laid down by the Constitution of the Canadian National Poultry Record Association. A male to become eligible must have been the son and grandson of a registered female and his sire and grandsire must have been approved male birds or the son of a registered male and at least a second generation registered female. The males to qualify must pass inspection as to Standard requirements, constitutional vigour, and be worthy specimens of the breed and variety they represent.



By such a pedigree system we hope to be able to place before the buying public male birds of known ancestry, giving such birds the seal of the Department of Agriculture as a guarantee that they are approved birds and by so doing offset the uncertainty which at present exists in the mind of the buyer as to the breeding of the bird for which he has paid a high price.

It is not the intention of the Department of Agriculture to qualify, in the immediate future, sufficient registered male birds to mate with the mass of the breeding females in Canada, but rather to secure a fair number of really high class males to mate with females of like breeding.

The males from this registered mating can then be used on farms having trapnest records of the females (Record of Performance), and the males from this mating can then be used to mate with the farm flocks throughout the country. Such a system should lead to gradual grading up of farm flocks and it is in this way that registration will be of the greatest benefit to the poultrymen of Canada.

In the ten contests held in 1921-22, 402 birds laid 200 eggs or upwards each, passed all requirements and were banded for registration before leaving the contest.

The following table gives the number of birds qualifying for registration in these contests, by varieties:—

#### BIRDS ELIGIBLE FOR REGISTRATION 1921-22 CONTESTS

Contest	Barred Plymouth Rocks	White Wyandottes	Single Comb Rhode Island Reds	Rose Comb Rhode Island Reds	Buff Orpingtons	Single Comb White Leghorns	Single Comb Anconas	Rose Comb Anconas	Andalusians	Total
Canadian .....	74	1	4	1	.....	51	2	2	1	136
Prince Edward Island	2	.....	.....	.....	.....	6	.....	.....	.....	8
Nova Scotia .....	20	.....	.....	.....	.....	.....	.....	.....	.....	20
New Brunswick .....	22	1	1	.....	.....	1	.....	.....	.....	25
Quebec .....	.....	.....	.....	1	.....	.....	.....	.....	.....	1
Ontario .....	24	.....	.....	.....	.....	48	4	.....	.....	76
Manitoba .....	8	6	.....	.....	.....	1	7	.....	.....	22
Saskatchewan .....	2	13	.....	.....	.....	.....	.....	.....	.....	15
Alberta .....	34	4	.....	.....	.....	.....	6	.....	.....	44
British Columbia .....	10	8	4	.....	5	27	.....	.....	1	55
Total .....	196	33	9	2	5	134	19	2	2	402

Of the 402 birds qualifying for registration 269 have been registered by their owners.

Careful inspection of the registered females, the males to which these females are bred, and the chicks hatched will, we hope, result in the successful recording of the first generation of registered poultry in Canada.

# Department of Agriculture



Dominion Experimental  
Farms

Poultry Division

Canada

## Advanced Record of Performance for Poultry

### Section A. C.

### Certificate

Owned by.....  
 Breed and variety.....  
 Record commenced.....  
 Official brand number.....

Record ended.....  
 Total production.....

This is to certify that the following trap-nest record was made by the bird bearing the above numbered band under the Rules and Regulations of the Canadian Record of Performance for Poultry Section A. C.

### Trap-nest Record

Period	No Eggs
From Nov 1 to Nov 28, 1921	
" Nov 29 - Dec 26, "	
" Dec 27 - Jan 23, 1922	
" Jan 24 - Feb 20, "	
" Feb 21 - Mar 20, "	
" Mar 21 - Apr 17, "	
" Apr 18 - May 15, "	
" May 16 - June 12, "	
" June 13 - July 10, "	
" July 11 - Aug 7, "	
" Aug 8 - Sept 4, "	
" Sept 5 - Oct 2, "	
" Oct 3 - Oct 30, "	

*Minimum Qualification Requirement*  
 Advanced Record of Performance - 225 eggs in 52 consecutive weeks

Dated at Ottawa this  
 ..... day of ..... 19..

.....  
 Director - Dominion Experimental Farms

.....  
 Dominion Poultry Husbandman





CAL/BCA OTTAWA K1A 0C5



3 9073 00215729 7

