

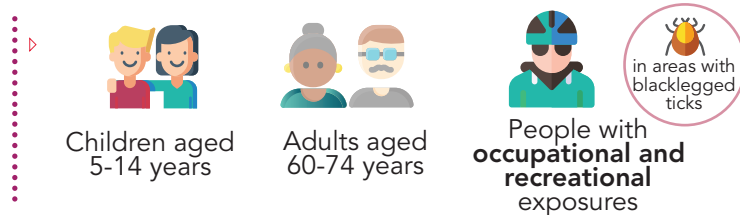
LYME DISEASE SURVEILLANCE IN CANADA

Preliminary Annual Edition 2018

WHAT IS THE RISK?

- ▶ **Lyme disease** is the most frequently reported **vector-borne disease** in Canada
- ▶ The **greatest risk** of acquiring Lyme disease occurs in regions where populations of ticks carrying the bacteria, *Borellia burgdorferi*, have become established

WHO'S AT GREATER RISK?



HOW TO MANAGE?

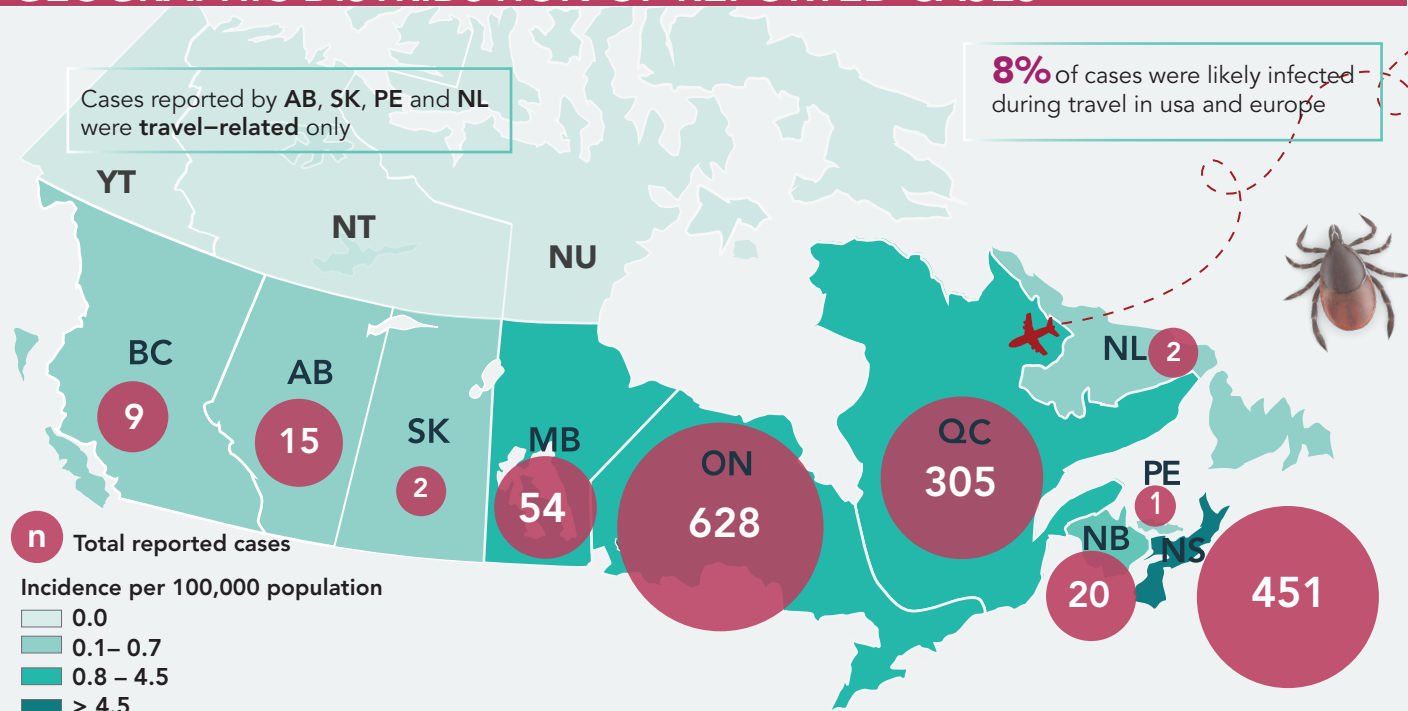
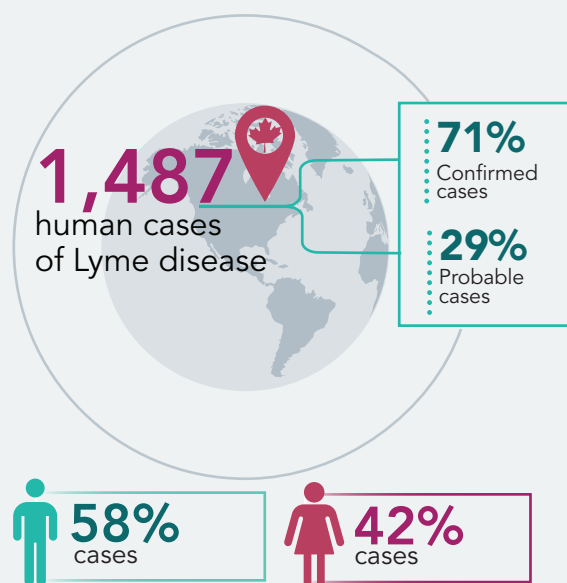
Most cases of Lyme disease can be effectively treated with 2 to 4 weeks of **antibiotics** if diagnosed early



FACTS

GEOGRAPHIC DISTRIBUTION OF REPORTED CASES

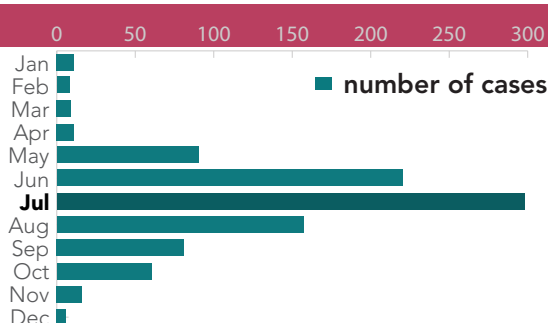
REPORTED IN 2018



SEASONALITY

31% OF CASES REPORTED AN ILLNESS ONSET IN **JULY**

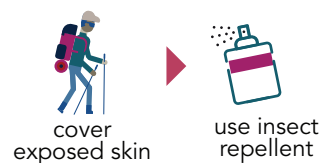
95% OF THE CASES OCCURRED FROM MAY THROUGH NOVEMBER



PUBLIC HEALTH RECOMMENDATIONS

TIPS TO AVOID TICK BITES:

PROTECTING YOURSELF WHEN DOING OUTDOOR ACTIVITIES



REDUCING RISK

